

W  
WINTERBROOK  
MEADOWS

THE SPRINGMEAD COLLECTION



## THE MILNE

3 BEDROOM HOME | PLOTS 1, 2(h), 11, 12(h), 18, 33(h), 45,  
46(h), 48 & 49

**Berkeley**  
Designed for life

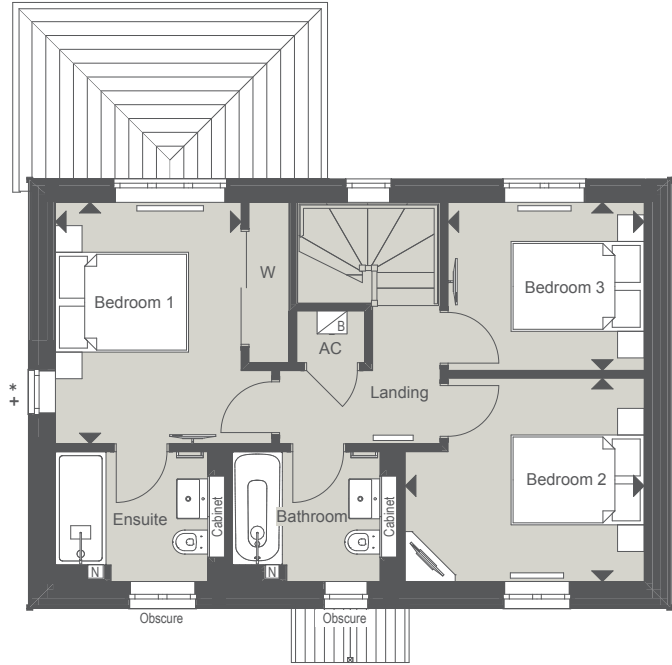
# THE MILNE

3 BEDROOM HOME | PLOT 1, 2(h), 11, 12(h), 18, 33(h), 45, 46(h), 48 & 49

109 sq m 1181 sq ft

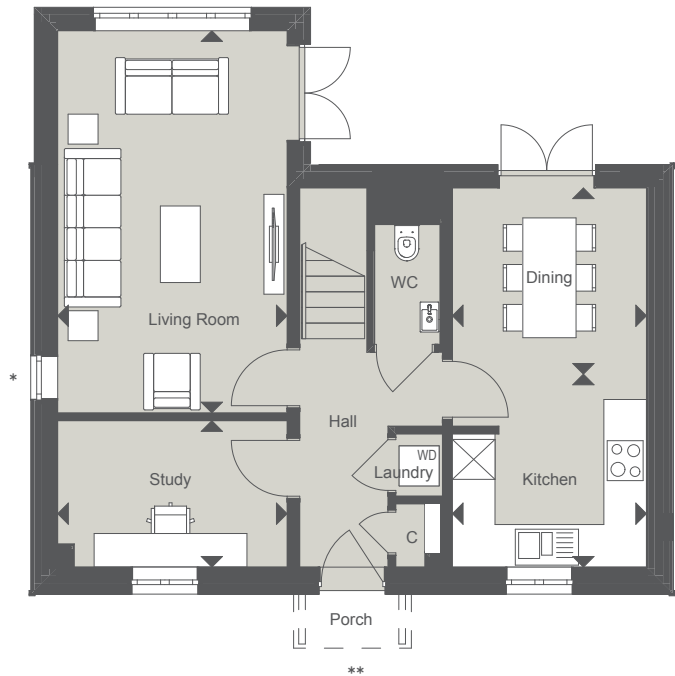
## FIRST FLOOR

Bedroom 1	3.63m x 2.79m	11'11" x 9'2"
Bedroom 2	3.59m x 3.05m	11'9" x 10'0"
Bedroom 3	2.95m x 2.53m	9'8" x 8'3"



## GROUND FLOOR

Kitchen	2.92m x 2.90m	9'7" x 9'6"
Dining	2.92m x 2.80m	9'7" x 9'2"
Living Room	5.74m x 3.45m	18'10" x 11'4"
Study	3.45m x 2.20m	11'4" x 7'3"



Details of parking arrangements are available via the Sales Consultant.  
 \*No side windows to plot 46. \*\*No side window to plot 48. \*\* Porch varies between plots.

(h) Denotes Handed Plot   ◀▶ Measurement Points   ☒ Tall Units   C Cupboard   W Wardrobe  
 B Boiler   WD Space and plumbing for Washer/Dryer   N Niche   AC Airing Cupboard

CGI is indicative only and representative of plot 1 & 2. Floorplans are for approximate measurements only. Exact layouts and dimensions may vary between individual homes. All measurements may vary within a tolerance of 5%. The dimensions are not intended to be used for carpet sizes, appliance sizes or items of furniture. Furniture and electrical layouts are indicative only. Kitchen layout subject to change. PV panels are indicative only and subject to change. Please ask a Sales Consultant for further information.