

W
WINTERBROOK
MEADOWS

THE SPRINGMEAD COLLECTION



THE LOWELL

4 BEDROOM HOME | PLOTS 24, 25, 31(h), 34(h) & 53

Berkeley
Designed for life

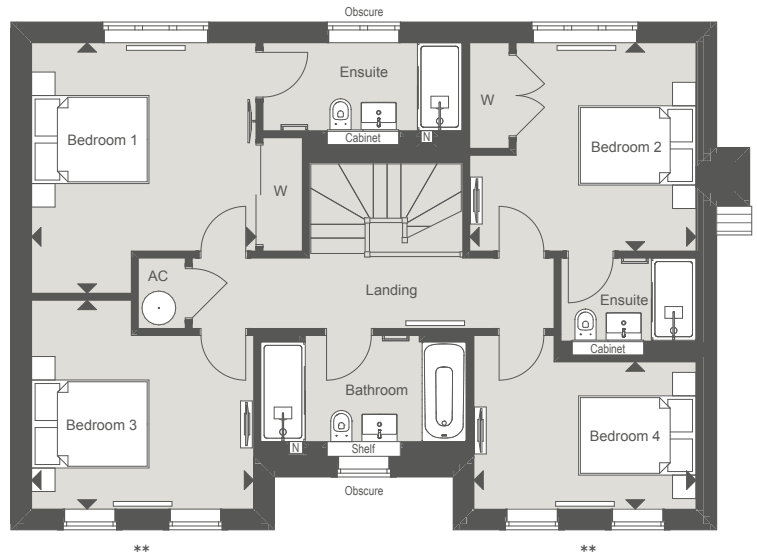
THE LOWELL

4 BEDROOM HOME | PLOTS 24, 25, 31(h), 34(h) & 53

174 sq m 1879 sq ft

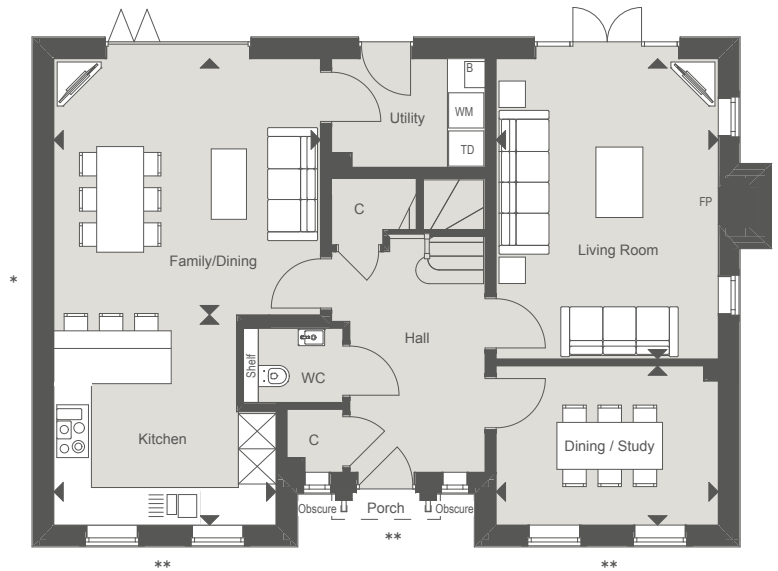
FIRST FLOOR

Bedroom 1	4.27m x 3.82m	14'0" x 12'7"
Bedroom 2	3.86m x 3.55m	12'8" x 11'8"
Bedroom 3	3.78m x 3.56m	12'5" x 11'8"
Bedroom 4	3.78m x 2.51m	12'5" x 8'3"



GROUND FLOOR

Kitchen	3.78m x 3.58m	12'5" x 11'9"
Family/Dining	4.54m x 4.37m	14'11" x 14'4"
Living Room	5.12m x 3.78m	16'9" x 12'5"
Study	3.78m x 2.71m	12'5" x 8'11"



Details of parking arrangements are available via the Sales Consultant.

*Additional side window to plot 24 and plot 53. **No side windows to front door, single window to front GF and FF to plot 53.

(h) Denotes Handed Plot ◀▶ Measurement Points ☒ Tall Units C Cupboard W Wardrobe
 B Boiler WM Space and plumbing for Washing Machine TD Space for Tumble Dryer N Niche AC Airing Cupboard FP Class one flue provision and gas supply only for future fireplace

CGI is indicative only and representative of plot 25. Floorplans are for approximate measurements only. Exact layouts and dimensions may vary between individual homes. All measurements may vary within a tolerance of 5%. The dimensions are not intended to be used for carpet sizes, appliance sizes or items of furniture. Furniture and electrical layouts are indicative only. Kitchen layout subject to change. PV panels are indicative only and subject to change. Please ask a Sales Consultant for further information.