

W
WINTERBROOK
MEADOWS

THE SPRINGMEAD COLLECTION



THE LAWRENCE

5 BEDROOM HOME | PLOTS 22 & 35(h)

Berkeley
Designed for life

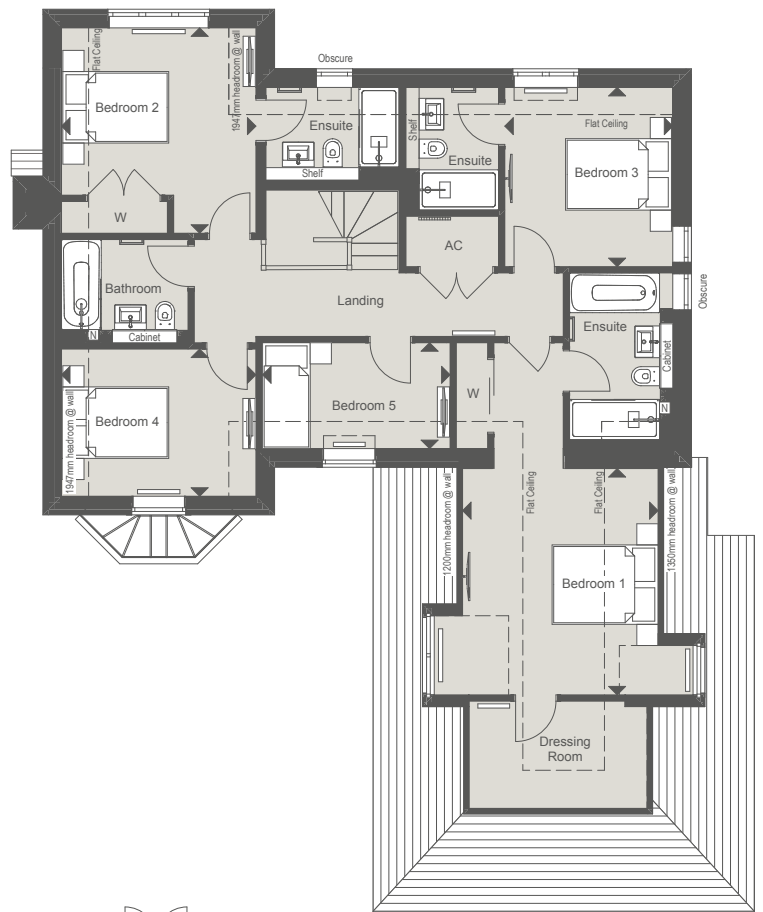
THE LAWRENCE

5 BEDROOM HOME | PLOTS 22 & 35(h)

205 sq m 2209 sq ft

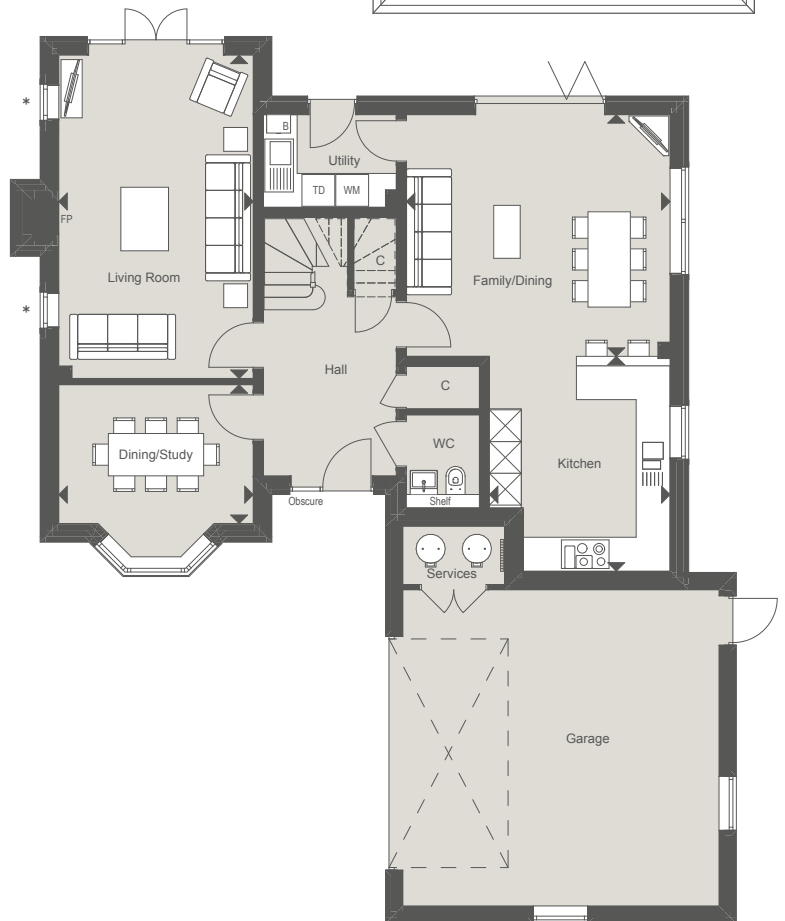
FIRST FLOOR

Bedroom 1	4.28m x 3.69m	14'0" x 12'2"
Bedroom 2	3.88m x 3.67m	12'9" x 12'1"
Bedroom 3	3.38m x 3.17m	11'1" x 10'5"
Bedroom 4	3.67m x 2.78m	12'1" x 9'1"
Bedroom 5	3.54m x 2.00m	11'7" x 6'7"



GROUND FLOOR

Kitchen	4.06m x 3.41m	13'4" x 11'2"
Family/Dining	4.98m x 4.56m	16'4" x 15'0"
Living Room	6.11m x 3.67m	20'0" x 12'1"
Dining/Study	3.67m x 2.62m	12'1" x 8'7"



Details of parking arrangements are available via the Sales Consultant. *No side windows to plot 35

(h) Denotes Handed Plot ◀ Measurement Points ☒ Tall Units C Cupboard W Wardrobe
 B Boiler WM Space and plumbing for Washing Machine TD Space for Tumble Dryer N Niche AC Airing Cupboard FP Class one flue provision and gas supply only for future fireplace

CGI is indicative only and representative of plot 22. Floorplans are for approximate measurements only. Exact layouts and dimensions may vary between individual homes. All measurements may vary within a tolerance of 5%. The dimensions are not intended to be used for carpet sizes, appliance sizes or items of furniture. Furniture and electrical layouts are indicative only. Kitchen layout subject to change. PV panels are indicative only and subject to change. Please ask a Sales Consultant for further information.