

W
WINTERBROOK
MEADOWS

THE SPRINGMEAD COLLECTION



THE HOPKINS

3 BEDROOM HOME | PLOTS 50(h), 51, 54, 55(h), 56 & 57(h)

Berkeley
Designed for life

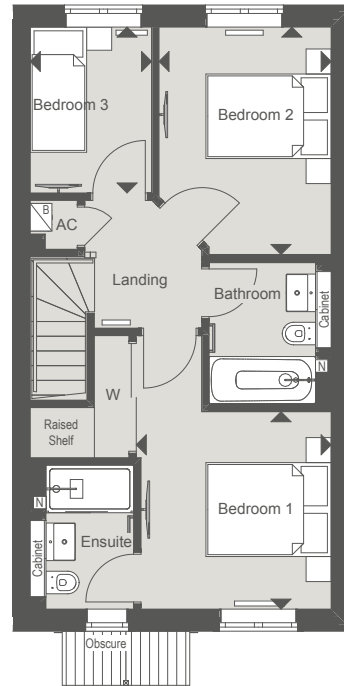
THE HOPKINS

3 BEDROOM HOME | PLOTS 50(h), 51, 54, 55(h), 56 & 57(h)

89 sq m 967 sq ft

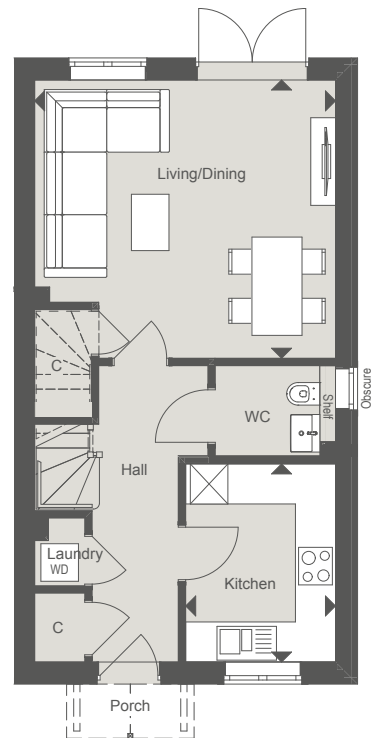
FIRST FLOOR

Bedroom 1	3.15m x 3.11m	10'4" x 10'3"
Bedroom 2	3.63m x 2.75m	11'11" x 9'0"
Bedroom 3	2.65m x 1.94m	8'8" x 6'4"



GROUND FLOOR

Kitchen	3.17m x 2.39m	10'5" x 7'10"
Living/Dining	4.81m x 4.44m	15'9" x 14'7"



Details of parking arrangements are available via the Sales Consultant.

*No window to plots 56 & 57.

(h) Denotes Handed Plot ◀▶ Measurement Points ☒ Tall Units C Cupboard W Wardrobe
 B Boiler WD Space and plumbing for Washer/Dryer N Niche AC Airing Cupboard

CGI is indicative only and representative of plots 54 & 55. Floorplans are for approximate measurements only. Exact layouts and dimensions may vary between individual homes. All measurements may vary within a tolerance of 5%. The dimensions are not intended to be used for carpet sizes, appliance sizes or items of furniture. Furniture and electrical layouts are indicative only. Kitchen layout subject to change.

PV panels are indicative only and subject to change. Please ask a Sales Consultant for further information.