

W
WINTERBROOK
MEADOWS

THE SPRINGMEAD COLLECTION



THE WORDSWORTH

4 BEDROOM HOME | PLOTS 23, 44, 47(h) & 52(h)

Berkeley
Designed for life

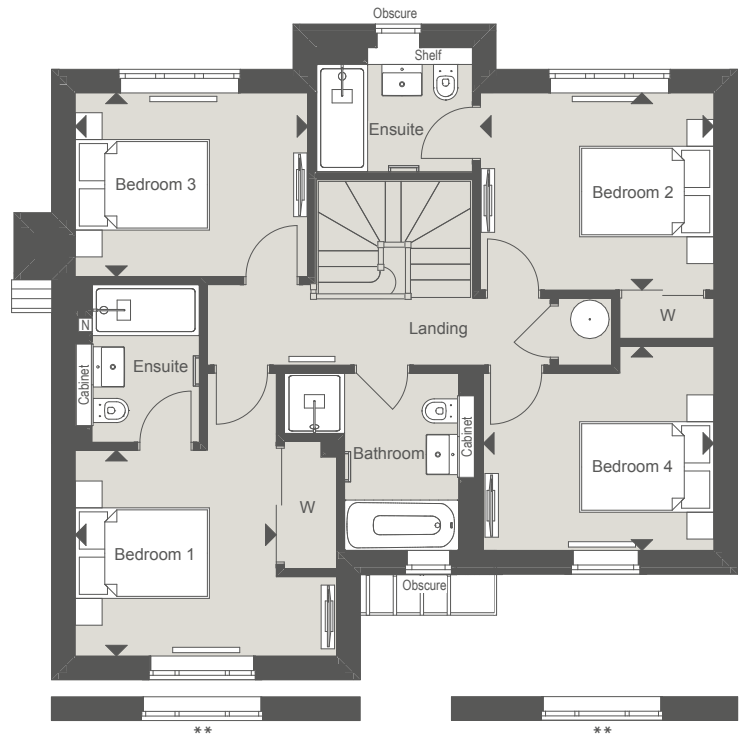
THE WORDSWORTH

4 BEDROOM HOME | PLOTS 23, 44, 47(h) & 52(h)

146 sq m 1579 sq ft

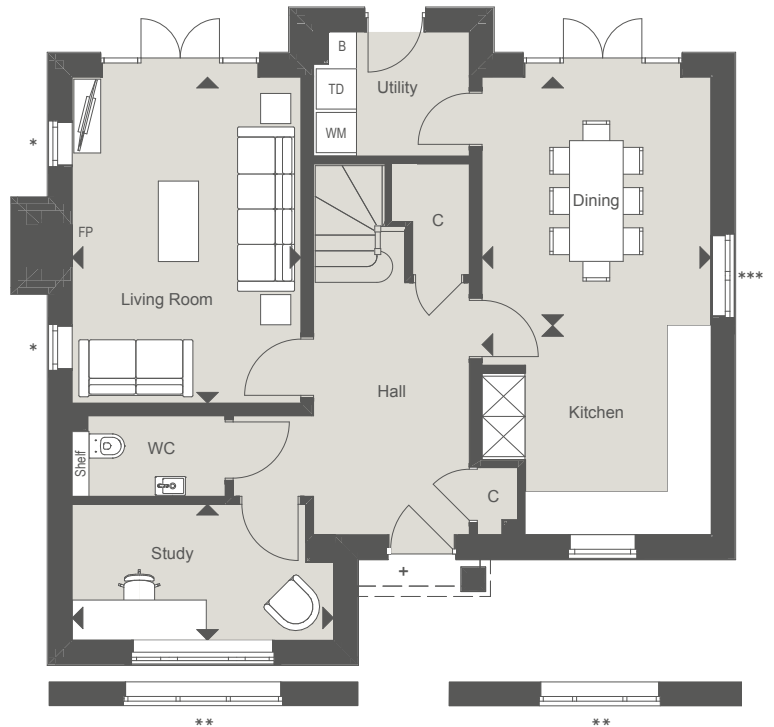
FIRST FLOOR

Bedroom 1	3.07m x 3.00m	10'1" x 9'10"
Bedroom 2	3.48m x 3.09m	11'5" x 10'2"
Bedroom 3	3.47m x 2.74m	11'5" x 9'0"
Bedroom 4	3.44m x 3.04m	11'3" x 10'0"



GROUND FLOOR

Kitchen	3.41m x 3.12m	11'2" x 10'3"
Dining	3.70m x 3.41m	12'2" x 11'2"
Living Room	4.89m x 3.41m	16'0" x 11'2"
Study	3.90m x 2.03m	12'9" x 6'8"



Details of parking arrangements are available via the Sales Consultant.

*No side windows to plot 52. **Bigger windows to plot 47. ***Tax window to plot 23, 44 & 47. +Porch varies between plots.

(h) Denotes Handed Plot ◀▶ Measurement Points ☒ Tall Units C Cupboard W Wardrobe
 B Boiler WM Space and plumbing for Washing Machine TD Space for Tumble Dryer N Niche AC Airing Cupboard FP Class one flue provision and gas supply only for future fireplace

CGI is indicative only and representative of plot 23. Floorplans are for approximate measurements only. Exact layouts and dimensions may vary between individual homes. All measurements may vary within a tolerance of 5%. The dimensions are not intended to be used for carpet sizes, appliance sizes or items of furniture. Furniture and electrical layouts are indicative only. Kitchen layout subject to change. PV panels are indicative only and subject to change. Please ask a Sales Consultant for further information.