



THE SUMMERLEIGH COLLECTION



THE NORTON

4 BEDROOM HOUSE | PLOTS 133, 135(h), 136 & 138(h)

Berkeley
Designed for life

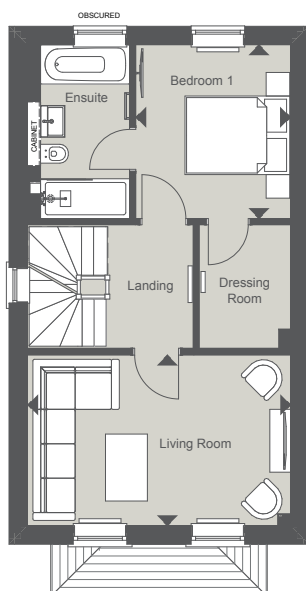
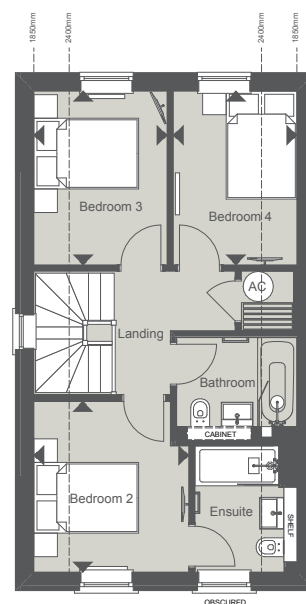
THE NORTON

4 BEDROOM HOUSE | PLOTS 133, 135(h), 136 & 138(h)

139 sq m 1498 sq ft

SECOND FLOOR

Bedroom 2	3.26m x 2.96m (MAX) (MAX)	10'8" x 9'8" (MAX) (MAX)
Bedroom 3	3.32m x 2.54m	10'10" x 8'4"
Bedroom 4	3.32m x 2.36m	10'10" x 7'8"

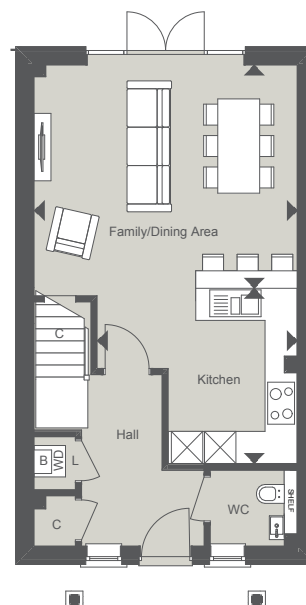


FIRST FLOOR

Bedroom 1	3.32m x 2.96m	10'10" x 9'8"
Living Room	4.96m x 3.26m	16'3" x 10'8"

GROUND FLOOR

Kitchen	3.78m x 3.34m (MAX) (MAX)	12'4" x 10'11" (MAX) (MAX)
Family/Dining Area	4.99m x 4.26m	16'4" x 13'11"



Details of parking arrangements are available via the Sales Consultant.

(h) Denotes Handed Plot ◀▶ Measurement Points ☒ Tall Units C Cupboard W Wardrobe
L Laundry B Boiler WD Space and plumbing for Washer/Dryer N Niche AC Airing Cupboard

CGI is indicative only and representative of plots 135 & 136. Floorplans are for approximate measurements only. Exact layouts, handing and dimensions may vary between individual homes. All measurements may vary within a tolerance of 5%. The dimensions are not intended to be used for carpet sizes, appliance sizes or items of furniture. Furniture and electrical layouts are indicative only. Kitchen layout subject to change. PV panels are indicative only and subject to change. Please ask a Sales Consultant for further information.