



THE SUMMERLEIGH COLLECTION



THE MILTON

4 BEDROOM House | PLOTS 139, 155 & 166(h)

Berkeley
Designed for life

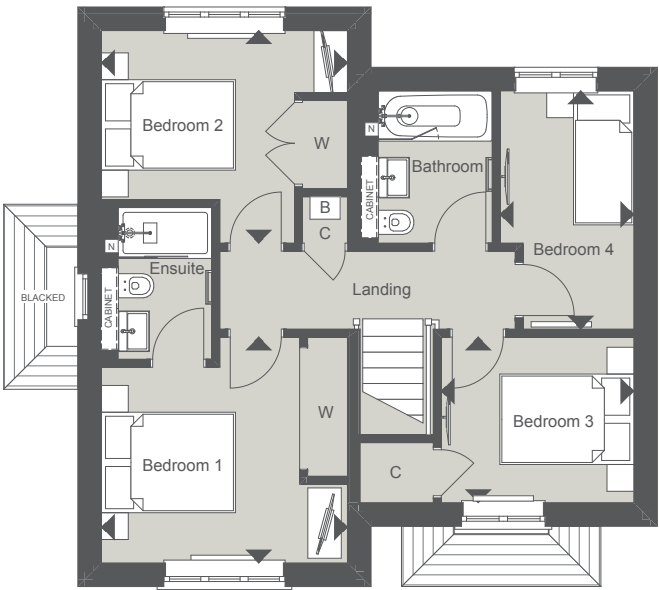
THE MILTON

4 BEDROOM House | PLOTS 139, 155 & 166(h)

113 sq m 1217 sq ft

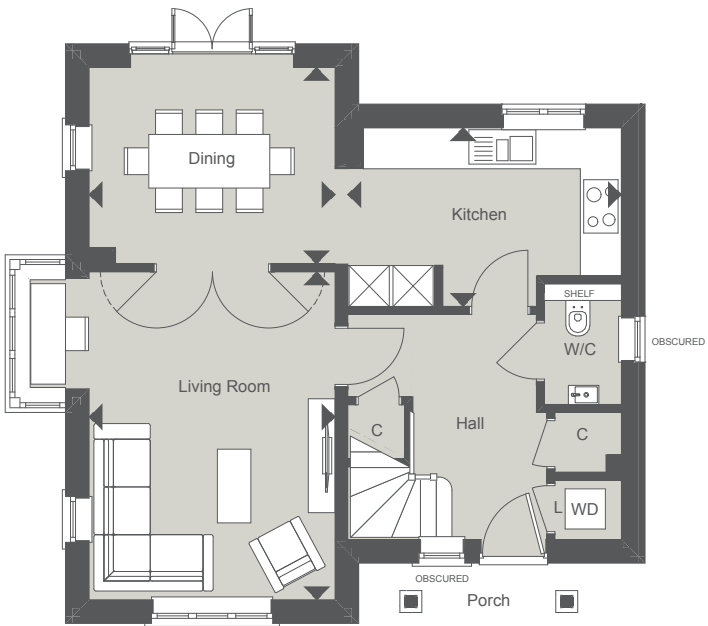
FIRST FLOOR

Bedroom 1	3.67m x 3.37m (MAX) (MAX)	12'0" x 11'0" (MAX) (MAX)
Bedroom 2	3.67m x 3.17m (MAX) (MAX)	12'0" x 10'4" (MAX) (MAX)
Bedroom 3	2.87m x 2.47m (MAX) (MAX)	9'5" x 8'1" (MAX) (MAX)
Bedroom 4	3.56m x 2.00m (MAX) (MAX)	11'7" x 6'6" (MAX) (MAX)



GROUND FLOOR

Kitchen	4.08m x 2.67m (MAX) (MAX)	13'4" x 8'9" (MAX) (MAX)
Dining	3.67m x 2.93m (MAX) (MAX)	12'0" x 9'7" (MAX) (MAX)
Living Room	4.89m x 3.67m (MAX) (MAX)	16'0" x 12'0" (MAX) (MAX)



Details of parking arrangements are available via the Sales Consultant.

◀ Measurement Points ☒ Tall Units C Cupboard W Wardrobe L Laundry
B Boiler WD Space and plumbing for Washer/Dryer N Niche AC Airing Cupboard

CGI is indicative only and representative of plot 166. Floorplans are for approximate measurements only. Exact layouts, handing and dimensions may vary between individual homes. All measurements may vary within a tolerance of 5%. The dimensions are not intended to be used for carpet sizes, appliance sizes or items of furniture. Furniture and electrical layouts are indicative only. Kitchen layout subject to change. PV panels are indicative only and subject to change. Please ask a Sales Consultant for further information.