

THE TRENT TIMES

WINTER EDITION 2022

Top tips on how to combat
the winter blues

Help us protect Trent Park's
range of wildlife

Explore Trent Park's rich history
through its landscaping

*Here's where you'll find the latest news, events and updates from
around TRENT PARK brought to you by BERKELEY HOMES.*



When SANTA came to visit

On Saturday 11 December, Father Christmas and his herd of reindeer visited Trent Park, where they joined the Berkeley team and residents for a special festive event and charity fundraiser for the Enfield Wildlife Rescue and Ambulance Service.

Guests enjoyed delicious hot chocolate, mulled wine and mince pies, as well as a cheerful performance of Christmas carols by The London Carol Singers. The children all met with Father Christmas, and each took home a gift to put under the tree ready for Christmas morning.



Residents and the Berkeley team also took part in a charity raffle to raise money for the Enfield Wildlife Rescue and Ambulance Service, a fantastic organisation based in Trent Country Park. An impressive range of prizes were on offer, all donated by local businesses near to Trent Park, including vouchers from Oakwood Florist, AI Clay Shooting and ME Aesthetics. The raffle raised £545, a donation which was matched by Berkeley.

Residents at Trent Park enjoyed a series of neighbourhood events last year, organised by Berkeley to bring everyone together and further enhance this already thriving community – we can't wait for more events in 2022!



Exciting *incentives* on offer to homeowners at TRENT PARK

Whether you already live at Trent Park or you're interested in doing so in the near future, we have an exciting range of incentives available...

RECOMMEND A FRIEND (ENDS 30 APRIL 2022)

If you are an existing resident and you recommend Trent Park to a friend, family member or colleague who then purchases a property at one of our developments, you can claim our 'recommend a friend' reward; this incentive is worth between £2,000 and £10,000 depending on the value of the property being purchased.

Step 1

Provide your friend with the email address that you use to log into MyHome Plus.

Step 2

Your friend can provide their sales consultant with your email address or complete it on the website when they register.

Step 3

When your friend completes their purchase, you will then receive your reward from us.



Computer generated image of The West Wing, indicative only

Enquire today:
020 3925 9403 | Trent-Park.co.uk



clubconcierge

CLUB CONCIERGE £1,000 VOUCHER

All new buyers at Trent Park will receive a £1,000 voucher for Club Concierge. The services of Club Concierge go well beyond parcel collection and greeting guests. For busy residents who are looking for a helping hand, the specialist team provide home cleaning and laundry (including dry cleaning), as well as handyman services and at-home help such as watering plants and collecting mail while residents are away. The team can also help with painting, decorating, plumbing and maintenance. Club Concierge can support residents with a range of daily tasks to help make life that little bit easier.

clubconcierge.co.uk



HOW TO combat the *winter blues*

After a busy festive period and celebrating the start of the New Year, the long nights and grey skies in January can be dreary. Let's face it, wind and rain doesn't exactly make you want to jump out of bed in the morning!

TOP TIPS FROM NU MIND WELLNESS

Will Higgins, Co-Founder of Nu Mind Wellness, a stress and anxiety service based in Surrey, has shared his top tips for looking after your mental and physical wellbeing, to help combat those winter blues.

TIP 1 - FRESH AIR AND SUNLIGHT

"Getting some fresh air and sunlight doesn't mean we all need to go on long hikes or runs, but making sure we take time to go outside at least once a day is incredibly important. Whether it's a stroll up the street, eating lunch outside or simply taking the dog for a walk around Trent Country Park - it might be hard work when it's cold outside but getting outside is a great way to refresh our minds and have some time away from the screen. You'd be surprised at how much nature benefits our personal mindset and naturally energises our bodies."



TIP 2 - COMMUNITY

"Talking is one of the most effective ways to positively manage our mental health. It may seem simple but after the busy festive season, sometimes our social lives take a back seat but it's important to prioritise person-to-person interaction, especially with more of us working from home again." Your neighbours are a great place to start and the community at the heart of Trent Park creates a supportive and comfortable environment. Make sure you head down to the next community event, as having a home surrounded by friends is one of the best steps we can take to promote positive wellness in our lives.

TIP 3 - STRUCTURE

"Having a structure or daily routine can help to ensure we have balance - setting an alarm to wake up in the morning, a designated time to go out for some fresh air and a bedtime helps us keep motivated throughout the long winter days. Making plans with friends during the week can also support our mental health as it gives us something to look forward to - it can be as simple as going out for a coffee or booking tickets to the cinema."

These top tips are just a few ways that we can achieve a balanced approach to daily life - whilst it's important to take time to reflect and relax, it's just as essential to prioritise social time and to get out of our home environment. Check out NU Mind Wellness' website for further tips - there are some free online courses focusing on exercise, nutrition and mental health which can also provide you with more information.

numindwellness.com



THE LAWN CLUB, TRENT PARK

Not only can you enjoy long walks (or a jog!) around the 413 acres of stunning parkland surrounding Trent Park, the residents' Lawn Club is the perfect place to kick start a new fitness routine. Residents benefit from a wealth of impressive amenities, including an elegant open-air swimming pool, a state-of-the-art gym and open-air tennis courts. There's no excuse when such incredible facilities are on your doorstep!



TRENT PARK GOLF COURSE

Trent Country Park's 18-hole golf course is open to everyone on a 'pay and play' basis. Trent Park Golf Course has added a fantastic jungle-themed adventure golf course called Jungle Falls. It has 18 holes of fun-filled action, packed with life-sized hungry (pretend!) creatures prowling jungle marshes, cascading waterfalls and secret giant caves nestled within a landscape of tropical palm trees.

trentparkgolf.co.uk



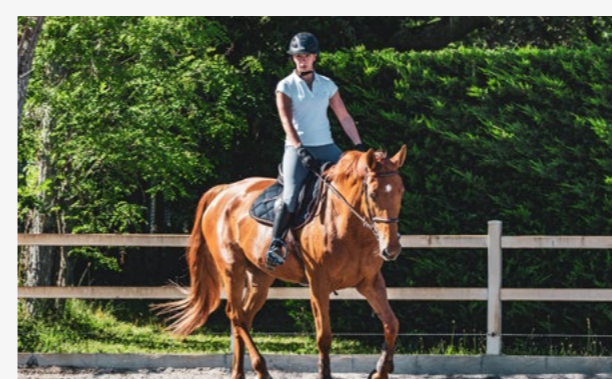
GO APE

This daring adventure course is ideal for those of you who are wanting to challenge yourself this winter. Featuring four freefall Tarzan swings and the longest, fastest zip line in London, the Treetop Challenge course is a heart-dropping, thrilling obstacle course in the trees, set in the heart of beautiful Trent Park.

goape.co.uk/locations/cockfosters

NEW YEAR, new *hobby?*

Exercise is not only brilliant for your physical health, it can also improve your state of mind - relieving stress, taking some time to reflect or simply escaping your day-to-day life for a while are just a few of the many benefits. There are some fantastic options available to residents at Trent Park...



TRENT COUNTRY PARK EQUESTRIAN CENTRE

Learn to ride at Trent Park's equestrian centre, which is open seven days a week with classes for adults and children. Riders have the choice of over 135 horses and ponies, and classes are suitable for most ages (4yrs+) and abilities, whether you want to hack, jump or simply ride on the flat. The centre offers a range of livery facilities to horse owners, including two international size indoor arenas, a floodlit outdoor manège, cross country course and canter track.

trentpark.ecpro.co.uk



A1 CLAY SHOOTING

Clay shooting not only gets you outdoors for some fresh air, it also teaches a brand new set of impressive skills and concentration. The Premier Clay Shooting Centre services both beginners and advanced levels through individual coaching as well as group bookings.

alsg.co.uk



LEE VALLEY WHITE WATER RAFTING

Home to the 2012 Olympic's white water rafting course, Lee Valley is your chance to embrace your inner thrill-seeker and try a fun new sport. Whether it's family paddling on the lake or taking to the rapids of the Olympic course - there is something for everyone to enjoy and challenge themselves with.

visitleevalley.org.uk/whitewater



Wildlife at TRENT PARK

The natural environment and wildlife is incredibly important to us at Trent Park. Our development isn't only home to people, but to a wide array of wildlife - and we can all play our part in keeping them safe and their populations thriving!

HOW TO PROTECT THE HEDGEHOGS AT TRENT PARK...

There are lots of hedgehogs living amongst the beautiful surroundings of Trent Park, but did you know that British hedgehogs are on the decline and could become extinct in the next 20 years if we don't take more measures to protect them?

Most hedgehogs hibernate during the coldest months of the year, which gives us a good opportunity to prepare for their return to our gardens in spring (although they don't always hibernate, so do keep an eye out for them!). One easy step you can take to keep the hedgehogs on the move through Trent Park is to cut a hole in the bottom of your garden fence to create a Hedgehog Highway. This allows them to move around and find food and a suitable habitat.

What extra steps can you take to protect the hedgehogs at Trent Park? We asked Barry Smitherman, Founder of Wildlife Rescue & Ambulance Service based at Trent Country Park for some advice...

You can leave out tinned dog food for hedgehogs but remember to avoid any fish flavouring and also ensure the food is in jelly form.

Allowing a metre square of your garden to grow wild will help the hedgehogs find natural food and also help them to keep damp in dry weather.

Keep your garden free of any netting, twine or wire that a hedgehog may get tangled in.

If you are interested in finding out more - WRAS will be holding an introduction to protecting hedgehogs course in the centre classroom soon - please email barrywras@gmail.com for further details.

wras-enfieldwildlife.org.uk/



BATS AT TRENT PARK

A variety of bat species are also residents at Trent Park - there is currently a maternity roost of 40 bats within the development. Bats play a crucial role in the natural environment - they not only assist with flower pollination, but they also help with pest control. The main way you can support the conservation of bats at Trent Park is by installing a bat box in your garden - this will create a safe and secure place for the bats to settle in. There are also bat boxes around the development, provided by Berkeley, that you can keep an eye on for some incredible bat spotting!

Restoration at TRENT PARK



Trent Park has a history more exciting than most new developments. The site's glamorous past and rich heritage has played a crucial role in the design of our buildings – both new and restored – and in the characterful and varied landscaping throughout.

In 1066, Trent Park once formed a small part of Enfield Wood. The earliest known lord of the estate was Ansgar, 'Staller' or High Constable to Edward the Confessor, who inherited the land from his Danish ancestors. The estate was passed onto Henry IV in 1399 who converted the land into a royal game reserve and then was inherited by his son Henry V. In 1421, it was administered by the Duchy of Lancaster. Enfield Chase also passed into royal ownership at this time.

George III leased the site to Sir Richard Jebb, his favourite doctor, as a reward for saving the life of the King's younger brother, the then Duke of Gloucester. Jebb chose the name Trent, because it was in Trento, Italy, that the King's brother had been saved.



After passing through several more owners, in 1909 Trent Park was sold to Edward Sassoon. Following his death in 1912, the estate was inherited by his son, Sir Philip Sassoon. Well known for his socialite status in High Society, Sir Philip really made the estate his own and entertained many acquaintances, including Charlie Chaplin, Winston Churchill and the young Princess Elizabeth.

In 1939, after Sir Philip's death, Trent Park was requisitioned by the War office for the Secret British Intelligence unit M19. The estate was then used as a Ministry of Education emergency training college and finally in 1974, Trent Country Park became part of Middlesex University until 2012.

Berkeley purchased the site in 2015 and building soon commenced, but look closer and you'll find plenty of evidence of Trent Park's fascinating past...



LANDSCAPING

Many of the garden features at Trent Park were initially laid during the 1920s and 1930s by Sir Philip Sassoon. The Daffodil Lawn – where an impressive one million bulbs were originally planted and recently 120,000 have been replanted – as well as Wisteria Walk and The Long Garden are just a few of the iconic features that have been restored by our landscaping team. When you next enjoy a stroll through Wisteria Walk

and admire the beautiful sights of the vibrant pergola entwined with wisteria, take a moment to appreciate its illustrious history; it was first installed in 1912! You can also check out our last newsletter where we spoke with our landscaping team, Elite Landscapes, to find out more about the hard work that goes into Trent Park's landscape.



Computer generated image of a typical living/dining room in Trent Park House, indicative only.

TRENT PARK HOUSE

The magnificent Georgian mansion house at the heart of the development has an impressive and decadent history. Once the gathering place for international High Society, the Grade II Listed historic mansion will be restored and repurposed into luxury apartments and will also include a museum, café and residents' reading room. The conversion will retain its red-brick façade – originally created by Sassoon – and internally, many period details will be preserved. Original windows are being carefully refurbished while the building's high ceilings will be further enhanced by coffered detail and feature lighting.

STABLE BLOCK

One of the newest phases at Trent Park, due to launch this year, The Stable Block is rich in character and is a significant part of Trent Park's conservation. It has direct links to the estate's past – the block was built in the late 18th century by Sir Richard Jebb and was extended in the late 1860s in Victorian gothic style to form the courtyard. The new phase will comprise of two and three-bedroom refurbished apartments and four-bedroom duplexes, with access to a private courtyard.



Computer generated image of The Stable Block, indicative only.



Meet the team: Senior Sustainability Advisor VICTORIA CHATER-LEA

We caught up with Victoria, Senior Sustainability Advisor at Berkeley, to find out more about her role within the development and why sustainability is so important.

WHAT IS YOUR ROLE AT TRENT PARK?

I am Berkeley Capital's Senior Sustainability Advisor, so my duty in Trent Park is to make sure that sustainability is prioritised across every element of the build process. This is carried out through monthly site inspections which look at a range of aspects such as waste, housekeeping, water, ecology, pollution, impact on neighbours and carbon/water efficiencies. I also look after biodiversity on site – you'll often find me catching up with the ecologists here discussing the protection of species such as bats and Great Crested Newts. I also implement carbon saving innovations – we've recently changed the fuel we use across all of our construction vehicles to a greener alternative which will decrease emissions by 90%!

WHY IS SUSTAINABILITY SO IMPORTANT TO BERKELEY AND ESPECIALLY AT TRENT PARK?

Sustainability is all about ensuring that future generations can enjoy the world just as we have and it is at the heart of how Berkeley operates. We will leave Trent Park in a better, more biodiverse condition than when we arrived here, through our extensive landscaping, creation of wildlife habitat and other improvements to restore the natural environment.

We all have a fantastic opportunity at Trent Park to make sustainable choices that will help protect the beautiful natural environment we have.



WHAT IS THE BIGGEST CHALLENGE YOU FACE IN YOUR ROLE AND HOW DO YOU OVERCOME IT?

My biggest challenge at Trent Park is managing the protected species and ensuring their populations can thrive here. We have bats and Great Crested Newts at Trent Park, which require careful care and management.



The Long Garden

CAN YOU TELL US A LITTLE-KNOWN/HIDDEN SUSTAINABILITY FACT ABOUT TRENT PARK?

Trent Park has been designed to incorporate SuDS (Sustainable Drainage Systems). This means that instead of channelling water through a network of pipes and sewers to a watercourse, our systems mimic natural drainage regimes and reduce surface water flooding, improve water quality and enhance the biodiversity value of the environment. As well as SuDS, every house has a water butt!

WHAT ARE YOUR OBJECTIVES IN 2022?

My objective for Trent Park is to keep up the biodiversity improvements and implement ideas for nature wherever I can. Watch this space and look out for community nature events.

WHY IS TRENT PARK A GREAT PLACE TO LIVE?

Trent Park is a fantastic place to live because of all the open green space. You only need to go out of your front door to enjoy the beautiful nature and landscaping. If you want to feel like you are in the countryside yet enjoy going into London, it's the perfect place to live.



Sustainable Drainage System (SuDS)



Electric charging points

Find your home at TRENT PARK

THE CHAPLIN COLLECTION

Named after one of Trent Park's most famous guests, The Chaplin Collection is a selection of beautifully crafted one, three and four-bedroom houses – perfect for families of all sizes to enjoy the lifestyle on offer at Trent Park. Their central location at Trent Park means that residents will be well placed to enjoy the gorgeous landscaping, including the historic Daffodil Lawn, the Long Garden and Wisteria Walk; the homes are also just a short stroll away from the Lawn Club amenities, exclusive to residents.



Enquire today:
020 3925 9403 | Trent-Park.co.uk



THE STABLE BLOCK

The Stable Block will comprise two and three-bedroom refurbished apartments and a selection of four-bedroom duplexes, set around a private courtyard. These luxury homes incorporate design details that reflect the site's fascinating past. Just moments away from the Daffodil Lawn and Lawn Club, residents of The Stable Block benefit from a centralised position that boasts stunning surroundings and offers ultra-convenience.



CONTACT US: To find out more, call our sales team on 020 3005 5590



TRENT PARK
ENFIELD, LONDON

Homes selling fast!



QUEEN ELIZABETH COLLECTION

LAST TWO HOUSES REMAINING. COMPLETING AND READY TO MOVE INTO Q3/Q4 THIS YEAR

These traditionally styled homes are quietly located, designed for modern convenience and family life. All benefit from a choice of 3 kitchen/bathroom specifications and contemporary layouts. With just 1 Wisteria left, they are a popular choice. All overlooking a tranquil pond on a quiet residential street.

Prices start from £1,485,000



THE WEST WING

ONLY 2 LEFT. READY TO MOVE INTO EARLY NEXT YEAR (Q1/Q2 2023)

A collection of five 4-bedroom contemporary terraced town houses. Set over 3 storeys, with a choice of 2 specification options and with 2 dedicated parking spaces, stunning views over North Lawn and located moments away from the Lake.

Prices start from £1,690,000



CARLTON HOUSE

ONLY 2 LEFT. COMPLETING NEXT YEAR (Q3/Q4 2023)

The last remaining new build apartment at Trent Park. Located in an enviable position overlooking the Daffodil Lawn, Carlton House is made up of just 8 apartments with only 2 remaining. This 1st floor 2 bedroom apartment comes complete with dedicated parking.

Prices start from £790,000



THE WHISTLER COLLECTION

ONLY 4 REMAINING. 4 BEDROOM HOMES READY TO MOVE INTO EARLY NEXT YEAR (Q1/Q2 2023)

Flexible layouts across 3 floors, together with a choice of 2 kitchen specifications, these will appeal to families looking for space and comfort. All near-by to parkland, Wisteria Walk and The Long Garden.

Prices start from £1,495,000

Computer generated images, indicative only.

CONTACT US

Sales & Marketing Suite

Trent Park, Snakes Lane
(off Bramley Road), Enfield,
London EN4 0PS

Open daily 9am - 5pm

To arrange a viewing
please contact:

020 3925 9403 | Trent-Park.co.uk

Viewings are by appointment only due to Covid restrictions, and we kindly request all visitors to be mindful of our residents and respect their privacy.

