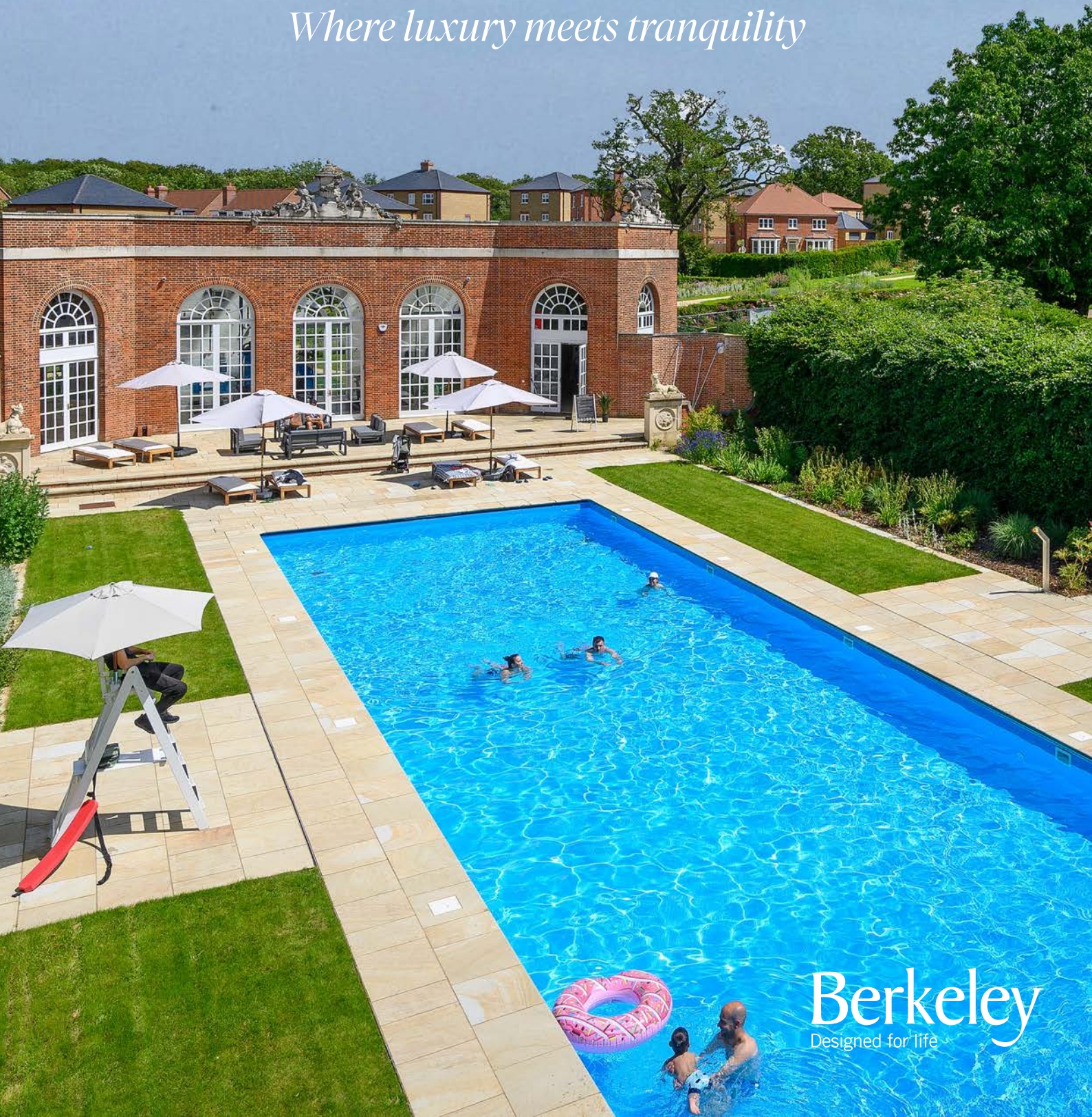




The
LAWN CLUB
—
TRENT PARK

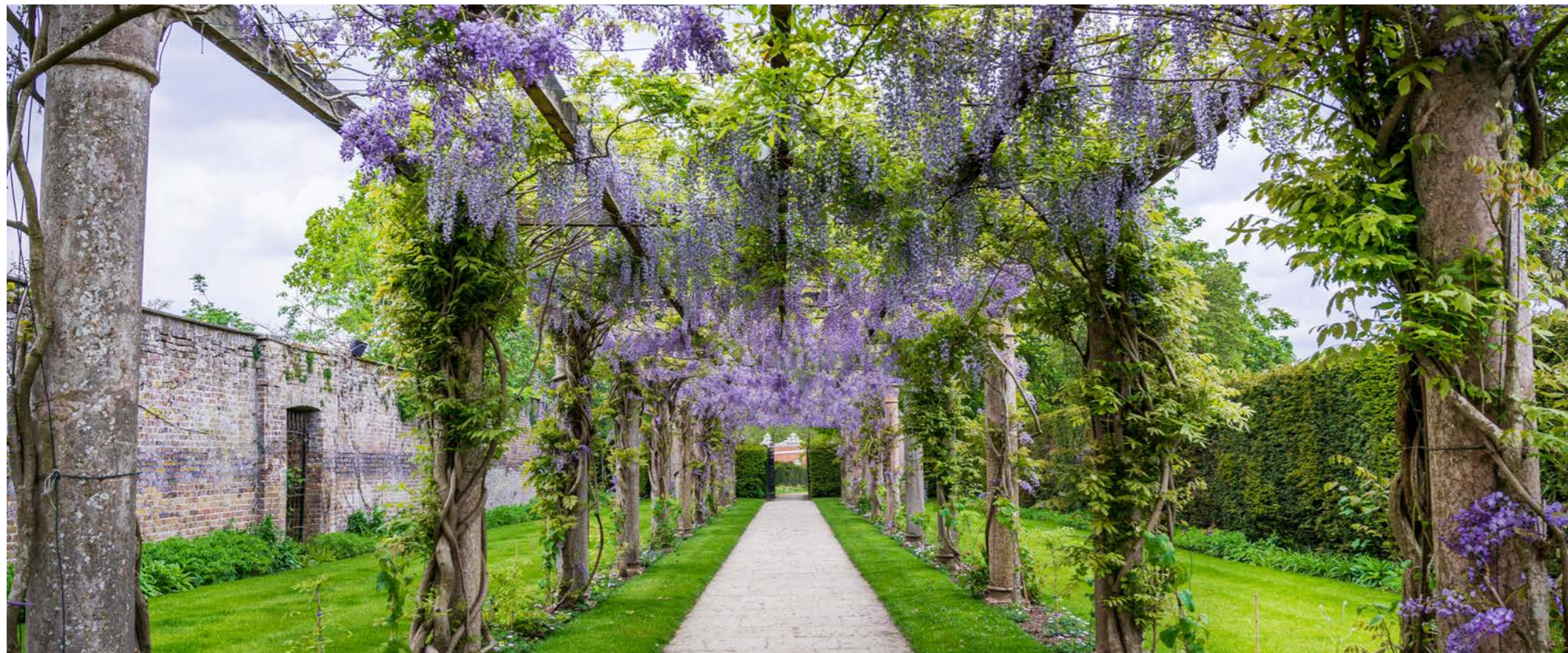
Where luxury meets tranquility



Berkeley
Designed for life

The *exclusive* Lawn Club provides our RESIDENTS at Trent Park with a range of *luxury facilities* including

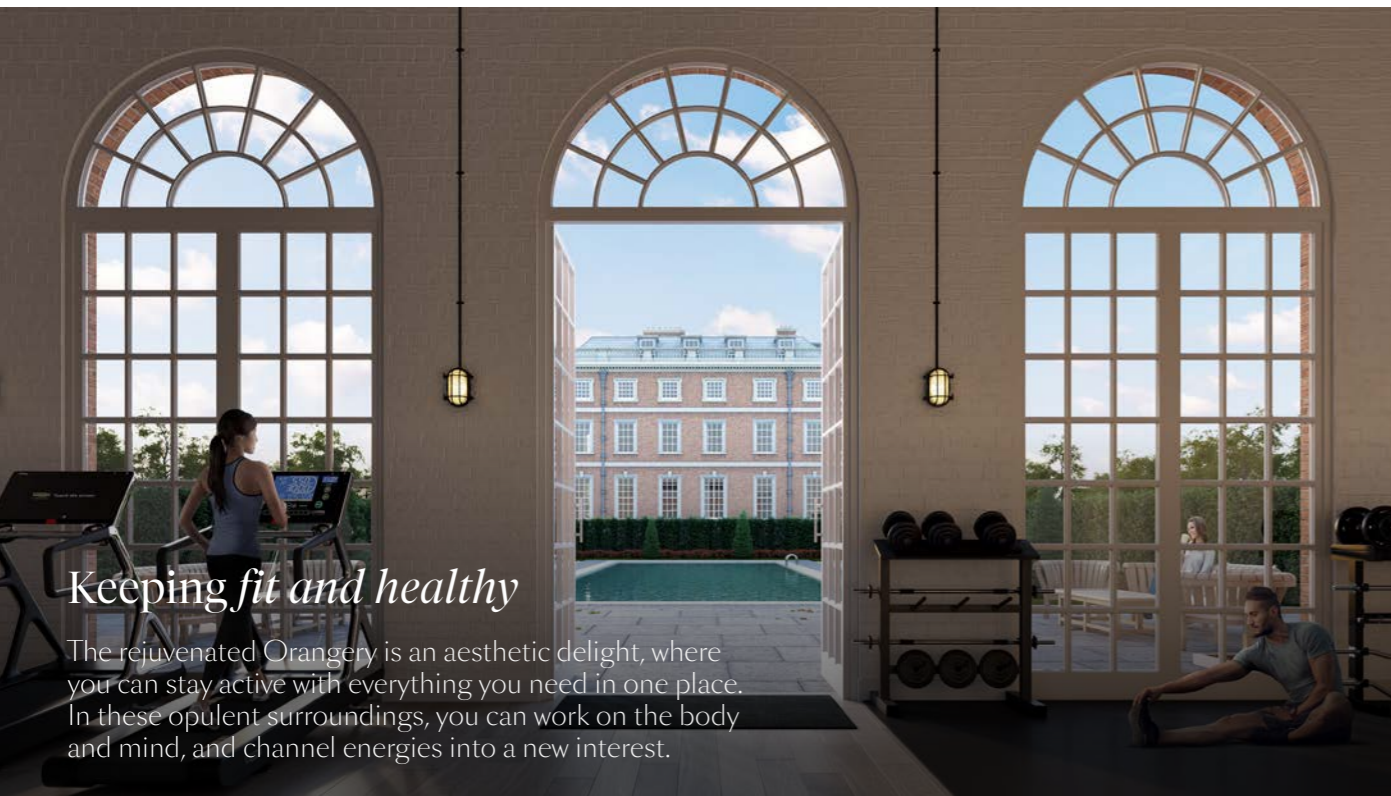
- Outdoor heated swimming pool with views of Trent Park House
- Fully equipped gymnasium located with the historic Orangery
- Outdoor tennis courts in a woodland setting
- 24 hour estate security
- Acres of beautifully maintained gardens
- Residents' shuttle to Oakwood Underground station



The restoration of WISTERIA WALK includes the refurbishment of the *York Stone path* and pink marble columns.

Politicians, Prime Ministers, royalty and famous personalities frequented these stately grounds. Trent Park provided a weekend retreat to revel in divine company and a place to be wowed and entertained. Sir Winston Churchill pictured in the photograph below at the original Wisteria Walk.





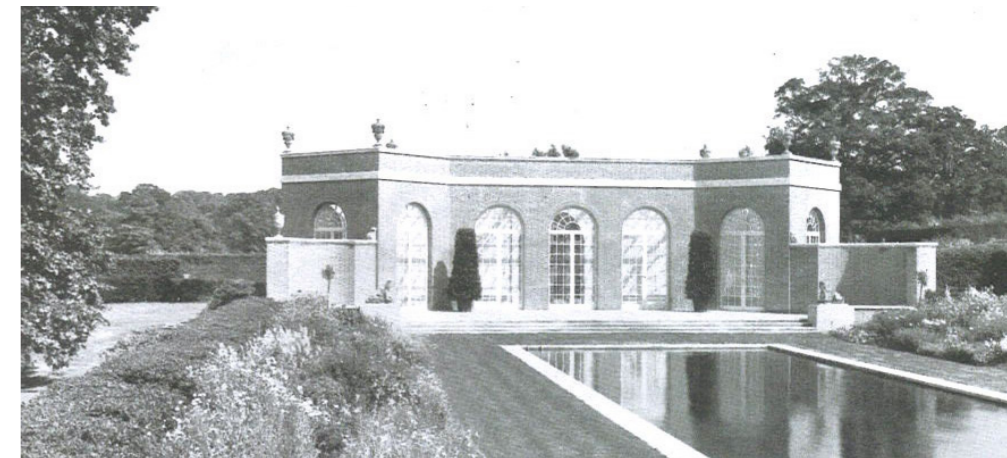
Keeping fit and healthy

The rejuvenated Orangery is an aesthetic delight, where you can stay active with everything you need in one place. In these opulent surroundings, you can work on the body and mind, and channel energies into a new interest.

TRENT PARK'S elegant *open air swimming pool*, popular with society guests of the 1920's, is now beautifully restored for residents to enjoy.

Open air POOL

Set in peaceful, private surroundings, the open air pool is your invitation to take a dip and enjoy the crystal clear waters.



EXPLORE THE LAWN CLUB



Henry VIII, Elizabeth I and James I took to regal horses to hunt deer through these ancient woodlands, where Her Majesty Queen Elizabeth II visited as a child, to play, roam and escape into the estate's splendour.



Unlike anywhere else to work out, the gym at TRENT PARK opens up onto a stunning outdoor pool with views across Trent Park House.



Open air swimming pool to relax and refresh your mind and body



Fully equipped gym where you can stay active in opulent surroundings



Outdoor restored tennis courts in a woodland setting



Acres of beautifully maintained gardens

ROYALTY and the *rich and famous* enjoyed time on these courts. RENOVATED to modern standards, *enjoy a sense of history* as you prepare to serve.



Residents' shuttle to Oakwood Underground station



413 acres of green space with 56 acres of private estate



Trent-Park.co.uk

Berkeley
Designed for life