



TRENT PARK  
ENFIELD, LONDON

# THE TRENT TIMES

AUTUMN EDITION 2021

Where to enjoy the best that  
Autumn has to offer and great  
places to re-fuel

Relax and reflect in Trent Country  
Park's hidden gem

Its been a busy year so far.  
Discover our progress.

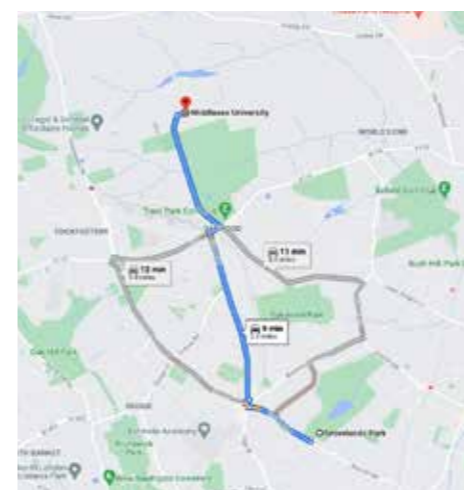
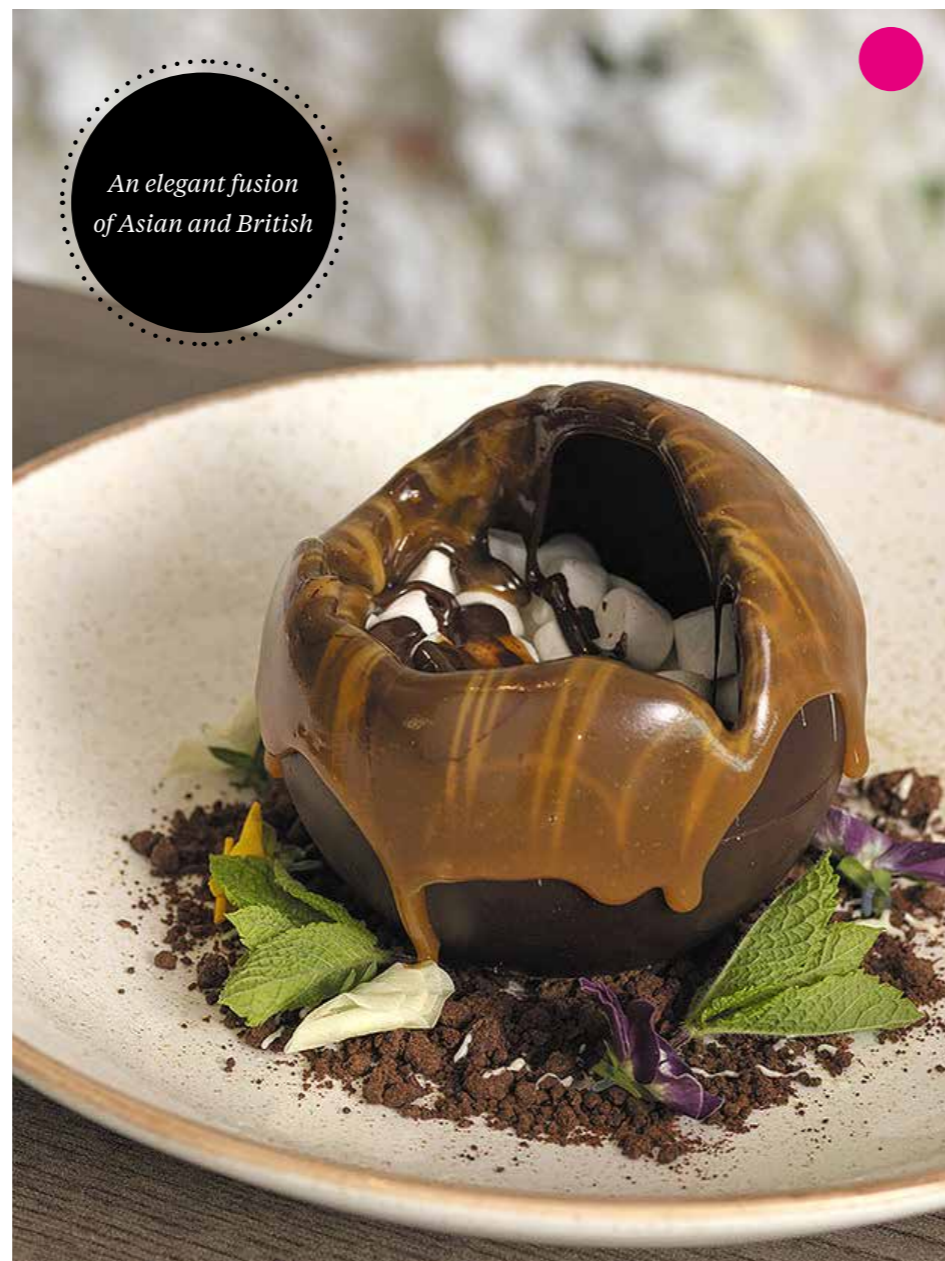
*Here's where you'll find the latest news, events and updates from  
around TRENT PARK brought to you by BERKELEY HOMES.*



# WALK *this way*

The warm weather may be behind us, but autumn really is a beautiful time to get outdoors and explore nature. Whether it's taking some time to relax and admire the stunning views or embarking on an adventure, Trent Park is surrounded by some incredible green (or red and gold as the weather turns!) spaces.

An autumnal afternoon is not complete without stopping off for a steaming cup of hot chocolate or something delicious to eat, so take a look at our favourite walking destinations close to (or in!) Trent Park and where to stop on the way.



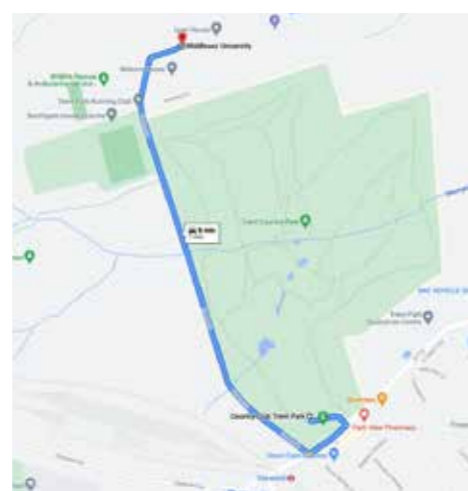
**T**  
**WINCHMORE.**  
**E**

## GROVELANDS PARK AND THE WINCHMORE

Grovelands Park, only nine minutes' drive from Trent Park, is a Green Flag sanctuary – ideal for escaping busy day-to-day life for a while. Whether it's a stroll in the autumn sun around the scenic lake or creating your very own scavenger hunt in the forests – there is an activity on offer for everyone to enjoy.

Next stop is The Winchmore, just over 10 minutes' walk from the park. This family-run pub has the friendly environment needed for a wholesome Sunday afternoon. Sit back and enjoy a glass of wine, whilst you tuck into some tasty dishes – their roast dinners are not to be missed! Choose from a vegan roast, lamb, chicken, beef, pork, or for those who can't decide – the Winchmore Ultimate Roast offers a variety of meats.

[winchmore.me](http://winchmore.me)



**Lily's**  
LOUNGE

## TRENT COUNTRY PARK AND LILY'S LOUNGE

Trent Country Park comprises 413 acres of woodland, green space and meadow; this incredible open space surrounds the homes at Trent Park on all sides. The park is the ideal place for a relaxed autumnal walk, and it's right on the doorstep for our residents. Make sure to stop off at some of the fascinating landmarks on your trail, including Sassoon's Obelisk, The Japanese Water Garden and Camlet Moat.

When it's time to take a break – Lily's Lounge can be found in the Country Club and has a mouth-watering menu filled with scrumptious small plates. With a menu featuring everything from Soft Shell Crab and Oriental Spiced Lamb Cutlets to Miso Glazed Cod Fillet and Crispy Baked Sriracha Tofu, as well as a range of sides and desserts – this is the perfect place for a treat to follow an afternoon of exploring.  
[countryclubtrentpark.co.uk/restaurant](http://countryclubtrentpark.co.uk/restaurant)



**MELANGE**  
Restaurant  
COCKTAILS | FOOD | GOOD MOOD

## KING GEORGE'S FIELDS AND MELANGE RESTAURANT

Wander across the beautiful King George's Fields, under 20 minutes' drive from Trent Park – another fabulous location for an autumnal afternoon. Enjoy a game of football or simply set up a picnic blanket at the top of the hill and revel in the far-reach views of London's skyline – a superb way to relax and watch the world go by from a peaceful oasis away from bustling Barnet.

After an afternoon outdoors, it's time to warm up and enjoy a delicious meal. Melange Restaurant is just ten minutes' walk from King George's Fields and has a superb food and drinks menu. With an impressive selection of sweet and savoury dishes, and seasonal cocktails, what better way to compliment a serene seasonal walk.  
[melangerestaurant.co.uk](http://melangerestaurant.co.uk)

### NEXT ISSUE

Would you like to feature in our next issue or is there anything you would like to know more about? We welcome your feedback.

**Please contact:** 020 3925 9403 | [email@trent-Park.co.uk](mailto:email@trent-Park.co.uk)

# WALK *this way*

The warm weather may be behind us, but autumn really is a beautiful time to get outdoors and explore nature. Whether it's taking some time to relax and admire the stunning views or embarking on an adventure, Trent Park is surrounded by some incredible green (or red and gold as the weather turns!) spaces.

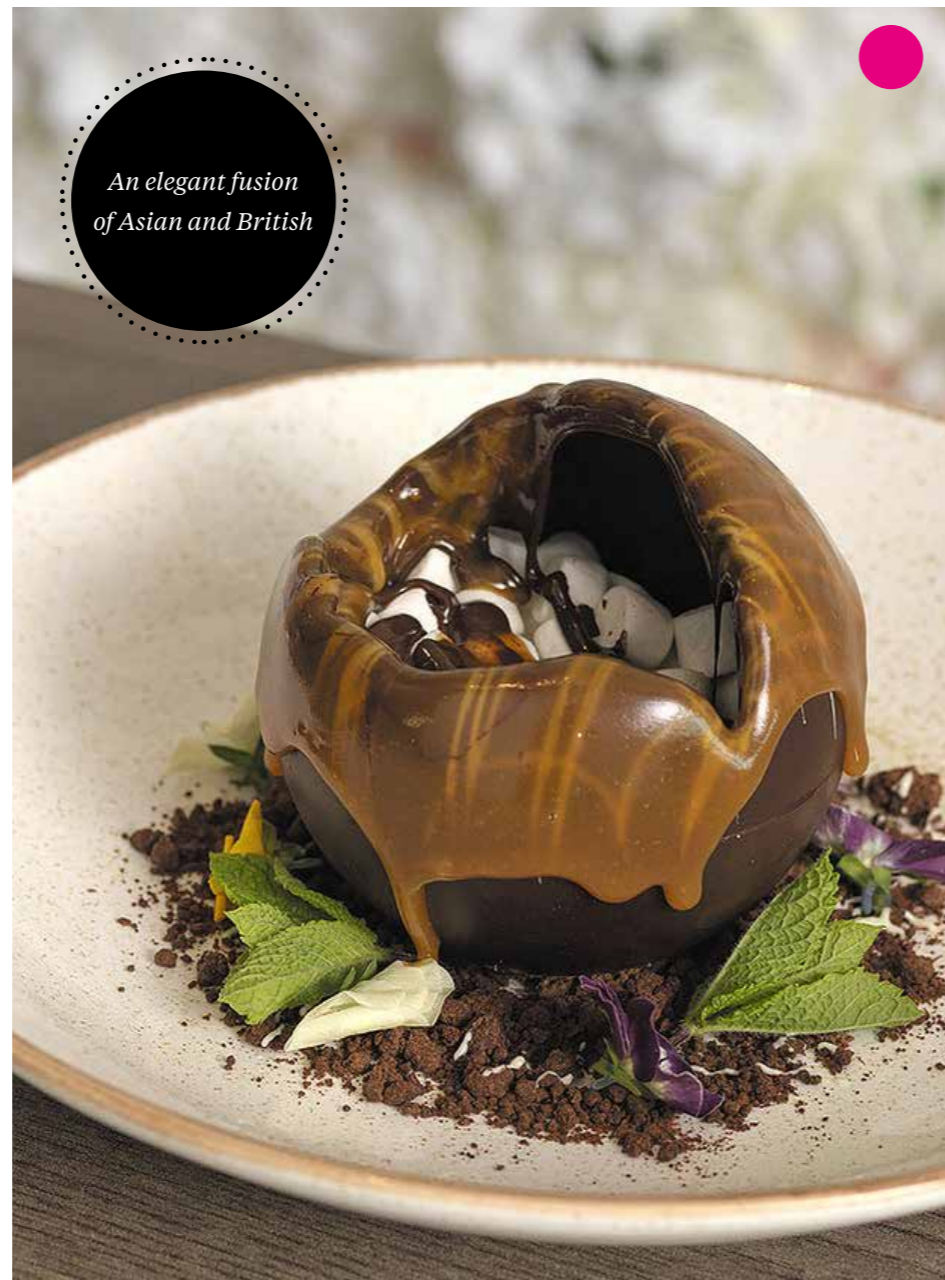
An autumnal afternoon is not complete without stopping off for a steaming cup of hot chocolate or something delicious to eat, so take a look at our favourite walking destinations close to (or in!) Trent Park and where to stop on the way.



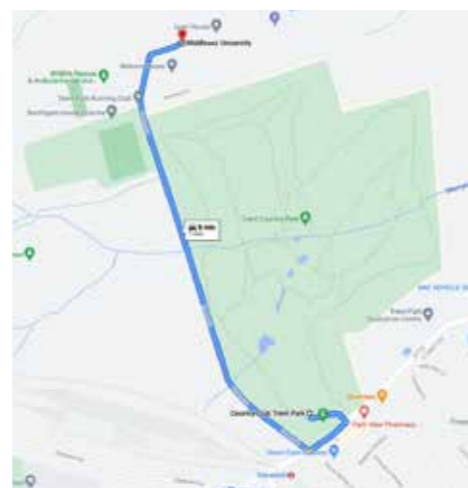
## NEXT ISSUE

Would you like to feature in our next issue or is there anything you would like to know more about? We welcome your feedback.

**Please contact:** 020 3925 9403 | [email@trent-park.co.uk](mailto:email@trent-park.co.uk)



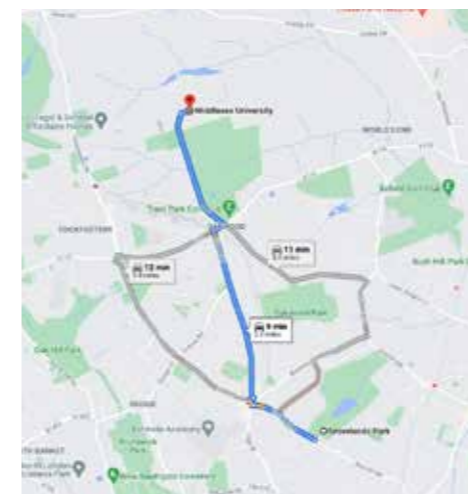
An elegant fusion  
of Asian and British



## TRENT COUNTRY PARK AND LILY'S LOUNGE

Trent Country Park comprises 413 acres of woodland, green space and meadow; this incredible open space surrounds the homes at Trent Park on all sides. The park is the ideal place for a relaxed autumnal walk, and it's right on the doorstep for our residents. Make sure to stop off at some of the fascinating landmarks on your trail, including Sassoon's Obelisk, The Japanese Water Garden and Camlet Moat.

When it's time to take a break - Lily's Lounge can be found in the Country Club and has a mouth-watering menu filled with scrumptious small plates. With a menu featuring everything from Soft Shell Crab and Oriental Spiced Lamb Cutlets to Miso Glazed Cod Fillet and Crispy Baked Sriracha Tofu, as well as a range of sides and desserts - this is the perfect place for a treat to follow an afternoon of exploring.  
[countryclubtrentpark.co.uk/restaurant](http://countryclubtrentpark.co.uk/restaurant)



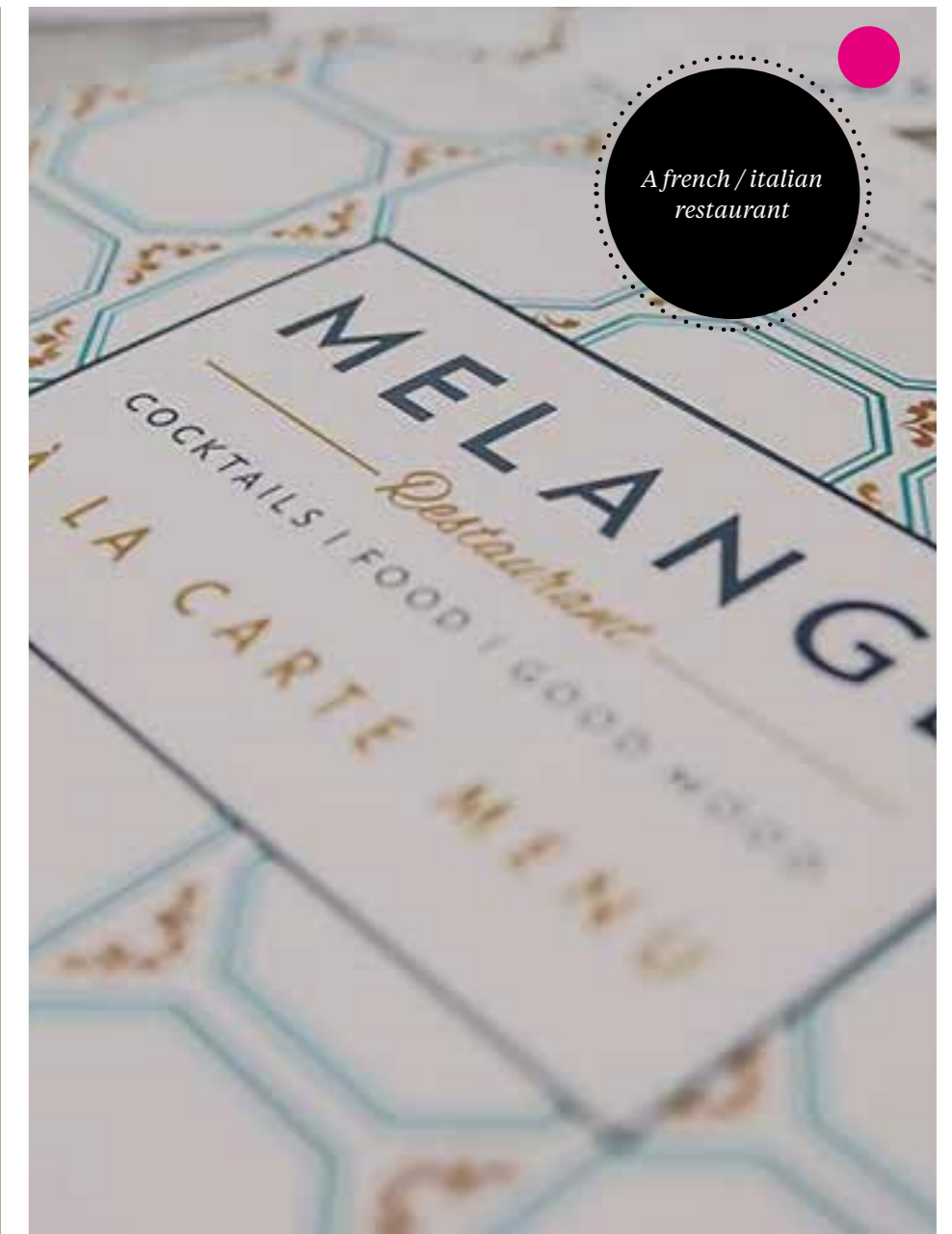
## GROVELANDS PARK AND THE WINCHMORE

Grovelands Park, only nine minutes' drive from Trent Park, is a Green Flag sanctuary - ideal for escaping busy day-to-day life for a while. Whether it's a stroll in the autumn sun around the scenic lake or creating your very own scavenger hunt in the forests - there is an activity on offer for everyone to enjoy.

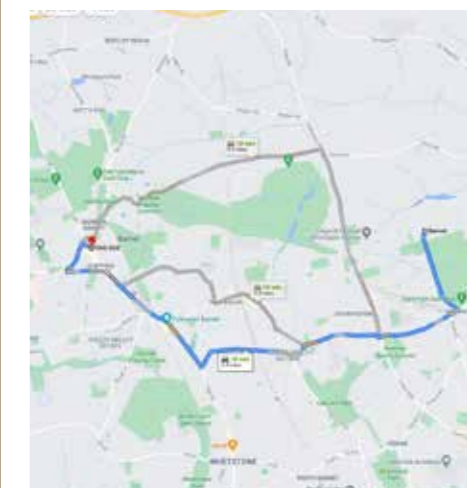
Next stop is The Winchmore, just over 10 minutes' walk from the park. This family-run pub has the friendly environment needed for a wholesome Sunday afternoon. Sit back and enjoy a glass of wine, whilst you tuck into some tasty dishes - their roast dinners are not to be missed! Choose from a vegan roast, lamb, chicken, beef, pork, or for those who can't decide - the Winchmore Ultimate Roast offers a variety of meats.  
[winchmore.me](http://winchmore.me)



Spirit Pub of the  
Year Award



A french / italian  
restaurant



## KING GEORGE'S FIELDS AND MELANGE RESTAURANT

Wander across the beautiful King George's Fields, under 20 minutes' drive from Trent Park - another fabulous location for an autumnal afternoon. Enjoy a game of football or simply set up a picnic blanket at the top of the hill and revel in the far-reach views of London's skyline - a superb way to relax and watch the world go by from a peaceful oasis away from bustling Barnet.

After an afternoon outdoors, it's time to warm up and enjoy a delicious meal. Melange Restaurant is just ten minutes' walk from King George's Fields and has a superb food and drinks menu. With an impressive selection of sweet and savoury dishes, and seasonal cocktails, what better way to compliment a serene seasonal walk.  
[melangerestaurant.co.uk](http://melangerestaurant.co.uk)

# Mind, body *and* soul

At Trent Park, the wellbeing of our residents is really important – our events programme promotes community, friendships between neighbours and a healthy lifestyle.

## Get together

### RESIDENT'S BBQ

Community spirit is at the heart of Trent Park and we thoroughly enjoyed our residents' BBQ in August. As life is becoming busier again and more people move in, the event gave our residents the opportunity to get to know their new neighbours. Incredible food, drinks and live music – courtesy of Judge Events – were all enjoyed in the Long Garden by the Orangery.



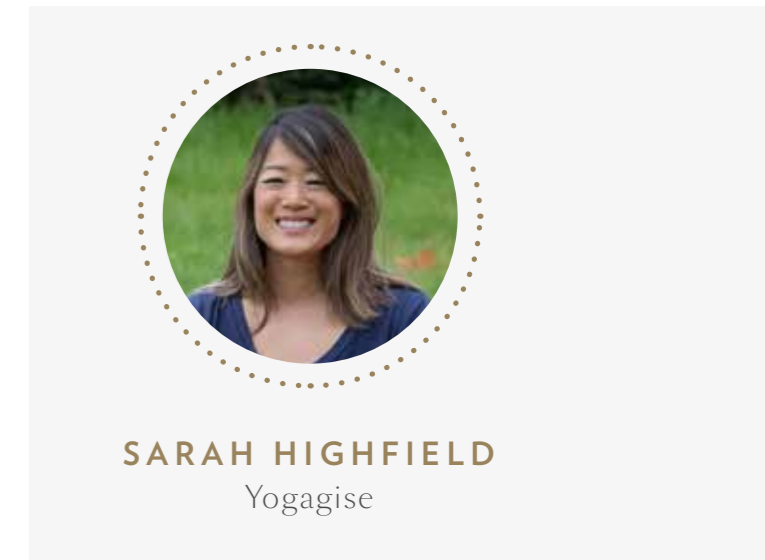
*I absolutely love playing tennis and it's such a fun way to keep active. Once I knew our new home had access to private tennis courts*

Resident of Trent Park

# Yoga is a way of life

### RESIDENTS' YOGA EVENT WITH SARAH HIGHFIELD

We were joined by Sarah Highfield, founder of Yogagise, at a residents' yoga event set in the tranquil surroundings of the North Lawn. A dozen of our residents joined Sarah for an early morning session – a fantastic way to relax the mind and body and start the day in the right way.



SARAH HIGHFIELD  
Yogagise

*I absolutely love playing tennis and it's such a fun way to keep active. Once I knew our new home had access to private tennis courts, I couldn't wait to reach for my racket.*

Sarah Highfield



# Spotlight on the Japanese Water Garden

Located in Trent Country Park, the Japanese Water Garden is the ideal place to relax and reflect. Sir Phillip Sassoon laid this landscaped spring garden under a canopy of oak and ash in the late 1920s.

Azalea, Camellia, Cherry and flowering Crab were just some of the plants Sassoon included in his work. The garden received its name as a result of the opening in the garden which was dressed with Azaleas and a wooden bridge – creating a Japanese effect.

The garden was abandoned for forty years and restoration efforts began in 1980. The historic and characterful garden is filled with a spectacular variety of flowers including Hydrangeas, Viburnums, Kolwitzia and Sambucus.



Park staff and community group The Friends of Trent Park go above and beyond to extend the flower season and ensure the gardens can be enjoyed throughout the year.

This autumn, visit the gardens to enjoy the stunning surroundings and take a stroll over the bridge to enjoy the views – whether it's some time to reflect or to simply enjoy a few minutes of peace – the garden is the perfect space to unwind.



# Our guide to LOCAL businesses in Oakwood

There are so many fantastic local businesses in Oakwood – under 20 minutes' walk or a 5 minutes' drive from Trent Park – we wanted to take some time to share a few of our favourites...



## OAKWOOD FLORIST

Oakwood Florist is a fabulous local business offering an impressive selection of flowers for all occasions. Visit their delightful shop on Bramley Road displaying their seasonal bouquets and arrangements – perfect for gifts or simply to treat yourself. They also offer same day delivery! Don't miss Nanny Apples Tea Rooms, located in the Florist, which presents a selection of scrumptious homemade cakes and hot drinks. This quaint and characterful tearoom is the perfect spot for an afternoon treat, whilst admiring the stunning displays of flowers and plants.

211 Bramley Rd  
London  
N14 4XA  
020 8363 0717



## ME AESTHETICS

Just a minutes' walk down Bramley Road from the florist and you will arrive at ME Aesthetics – a contemporary skin clinic and salon. With an extensive range of treatments including skin, brows, lashes, nails and more – the chic and modern interiors make for the perfect venue to sit back and relax.

177 Bramley Rd  
London  
N14 4XA  
020 8366 6777  
me-aesthetics.co.uk

*It was my first visit to ME.  
Treatment was first class,  
will definitely be a regular  
customer from now on.  
Friendly welcoming staff.*

Ann, ME client - Facebook

## F.NORMAN

Established in Oakwood over 75 years ago, F.Norman is a quintessential local butchers', offering a brilliant selection of local produce to the community – high quality and deliciousness is a guarantee. From hog roasts to Christmas turkeys – they cater for every occasion, so don't forget to put your orders in!

199 Bramley Road  
London  
N14 4XA  
020 8363 0293  
fnorman.co.uk



## GIGI BOUTIQUE

This family-run contemporary boutique is at the heart of Bramley Road and brings style to Oakwood. The acclaimed owners have used their experience in the fashion industry to create an elegant and comfortable shopping experience. Take the short trip to Oakwood to see all of their seasonal pieces and be inspired by the latest trends.

131 Bramley Rd  
London  
N14 4UT  
020 8882 7215  
gigi-boutique.co.uk

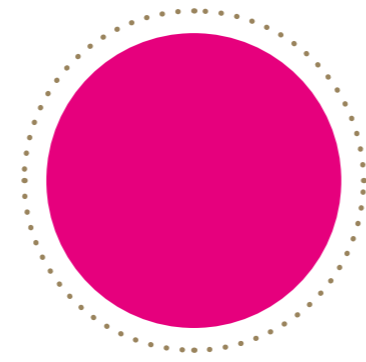
## BRAMLEYS

If you missed our Summer newsletter's spotlight on Bramleys, here's a reminder of why you need to try this restaurant! Their menu is packed with a range of seasonal dishes and flavoursome drinks – enjoy a delicious meal whilst sitting amongst the stunning indoor floral displays.

217 Bramley Rd  
London  
N14 4XA  
020 3417 5696  
bramleysrestaurant.co.uk



# Meet the team: Estate Manager GRAZ



We caught up with Graz, Estate Manager at Trent Park, to find out more about his role within the development and why he loves the community at Trent Park.

## WHAT IS YOUR ROLE AT TRENT PARK?

As an Estate Manager I am responsible for overseeing the day-to-day operational management and administration of Trent Park – every day is different, and I'm involved in many different aspects of the development. Trent Park is a growing community and as an Estate Manager I really enjoy engaging and working with the residents to create an inclusive, friendly environment. The residents are what makes Trent Park such a brilliant place to work!

## WHAT DO YOU ENJOY MOST ABOUT WORKING AT TRENT PARK?

An important part of being an Estate Manager is the upkeep and maintenance of the buildings and the surrounding landscaping, amenities and green space. We're really proud that at Trent Park, the beautifully designed buildings are equalled by the glorious park surroundings. I find the official site inspections really rewarding, especially during the summer – it's great to see everyone's hard work pay off. We work all year round to make Trent Park exceptional for every resident.

## HOW WOULD YOU DESCRIBE THE COMMUNITY AT TRENT PARK?

The community is the heart of Trent Park. Seeing the residents making new friendships and bonding together is great to watch. The events we host, such as the residents BBQ that took place this summer, are a great way for the residents to get to know each other and they create a comfortable and homely atmosphere. As one of our residents put it, Trent Park is like 'growing up in a village where everyone is friendly and looks out for each other'. I think that sums it up perfectly!



## DESCRIBE TRENT PARK IN A WORD OR TWO.

Working in such breath-taking surroundings can only be described in one way – *picture perfect!*

*The community is the heart of Trent Park. Seeing the residents making new friendships and bonding together is great to watch.*



# TRENT PARK *progress update*



## THE COOPER

A beautiful new showhome has launched at the Queen Elizabeth collection, tucked away in a peaceful corner of the development, surrounded on two sides by mature trees and overlooking a natural pond on another. The Cooper comprises 2,338 sq ft of living space across three storeys. It features a gorgeous shaker-style kitchen, a formal living room – complete with a grand fireplace – and separate snug, as well as five double bedrooms, three of which feature en suite bath or shower rooms.



Enquire today:  
020 3925 9403 | Trent-Park.co.uk



THE  
W W  
E I  
S N  
T G  
collection

## WEST WING

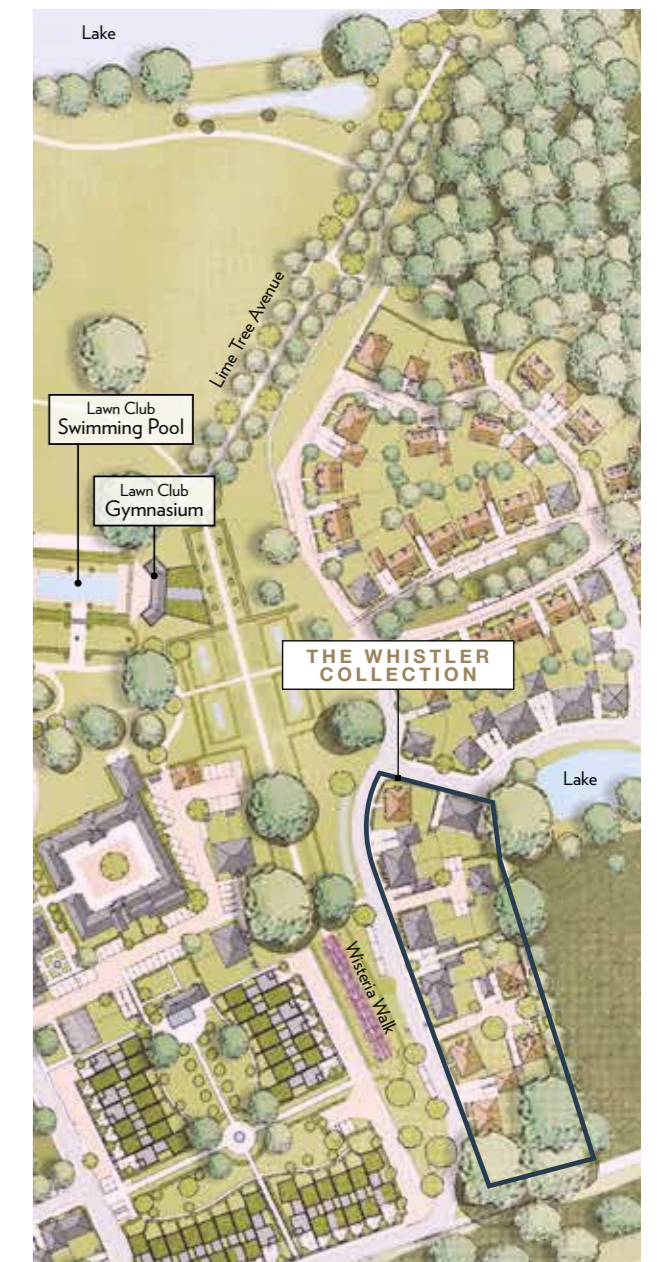
The West Wing, a collection of just five, four-bedroom, three-storey terrace houses located near to Trent Park House, launched this autumn. These contemporary homes will feature full-height windows, a light-filled open-plan kitchen/dining space on the lower ground floor opening out onto a patio and garden, and underground parking.



## CARLTON HOUSE

Equally elegant, a new two-bedroom show apartment showcases the boutique collection of just eight apartments in Carlton House, a new building next to Trent Park's magnificent Daffodil Lawn. Many of the apartments have views across to the

striking Grade II Trent Park House at the heart of the development. These beautifully appointed two and three-bedroom homes are light and airy, each featuring an open plan kitchen/living/dining space and a balcony or terrace.



## THE WHISTLER COLLECTION

The Whistler Collection, situated close to Trent Park's Wisteria Walk, launched this autumn, comprising a varied selection of three and four-bedroom semi-detached and detached houses.



**EXTRA SPREAD REQUIRED**  
to make up to 16 pages. Stapled documents  
must be divisible by 4 for binding.



TRENT PARK  
ENFIELD, LONDON

# Ad page

*Available now*

*Contact our sales team  
for more information*

020 3925 9403

Computer Generated Image, indicative only

## CONTACT US

### Sales & Marketing Suite

Trent Park, Snakes Lane  
(off Bramley Road), Enfield,  
London EN4 0PS

Open daily 9am - 5pm

To arrange a viewing  
please contact:

020 3925 9403 | [Trent-Park.co.uk](http://Trent-Park.co.uk)

Viewings are by appointment only due to Covid restrictions, and we kindly request all visitors to be mindful of our residents and respect their privacy.



**Berkeley**  
Designed for life