



THE TRENT TIMES

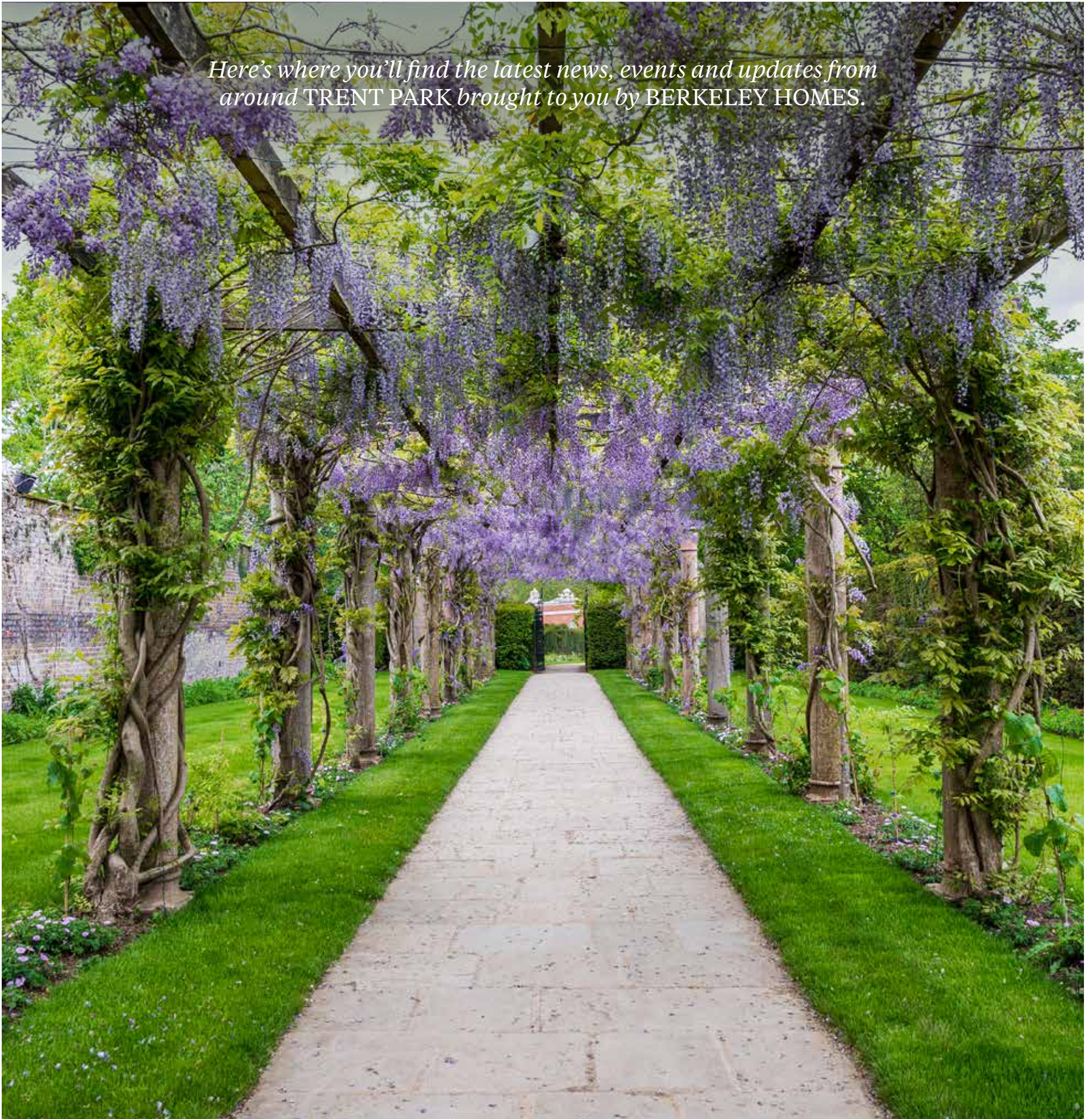
SUMMER EDITION 2021

Make the most of this fantastic
countryside setting and visit some
of the park's attractions

Enjoy a leisurely lunch with
friends on the buzzing
Cockfosters Road

Learn to ride at Trent Park's
equestrian centre, which is open
seven days a week

*Here's where you'll find the latest news, events and updates from
around TRENT PARK brought to you by BERKELEY HOMES.*





GAME, set & match

There are four open-air tennis courts at Trent Park, surrounded by woodland, and available for bookings via the residents' online portal. Enjoy a morning of matches, – perhaps followed by a picnic lunch and strawberries and cream on the lawn – it's all perfectly timed for celebrating the great British summer!



“It’s great to visit Trent Park and coach at these fabulous new facilities in such a beautiful setting. If people want to get outdoors and get active, whether they are beginners or lifelong tennis enthusiasts, here they can do so in a gorgeous, secure environment.”

Neil Mansell – Local tennis coach

AN ACE COACH

Local tennis coach Neil Mansell (a former top British junior who represented England at 18+ level) and his team offer a range of sessions, from individual and group classes to events and tennis parties, suitable for all levels of players and age groups. Mini tennis is also available for younger children to see if this much-loved hobby could be for them.

Neil has already started working with a number of Trent Park’s residents and has in the past worked with Natasha Zvereva, a former Wimbledon semi-finalist and multiple grand slam doubles winner.

Neil and the team are available 7 days a week for private coaching; for further information and bookings Neil can be contacted directly via email on neilmansell@hotmail.co.uk.



NEIL MANSELL
Local tennis coach

I absolutely love playing tennis and it’s such a fun way to keep active. Once I knew our new home had access to private tennis courts, I couldn’t wait to reach for my racket.

Resident of Trent Park

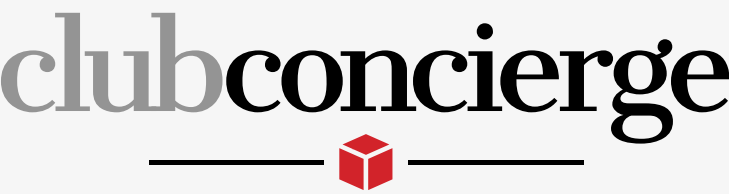
PRICES:

Individual lessons at Trent Park (60 minute session): **£50**
Adult group sessions at Trent Park, minimum of 4 players (75 minute session): **£15 per person**

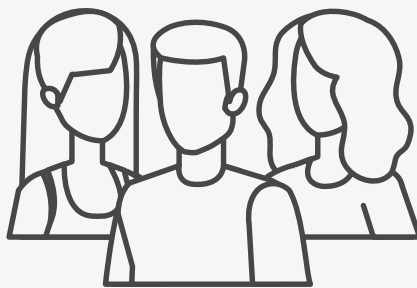
LIFE *isn't a Chore* at Trent Park!



Enquire today:
020 3925 9403 | [Trent-Park.co.uk](https://www.trent-park.co.uk)



Every moment of living at Trent Park should feel easy and effortless, and while there is no escaping how busy modern life has become, our Club Concierge is perfect for busy residents looking for a helping hand with day-to-day chores.

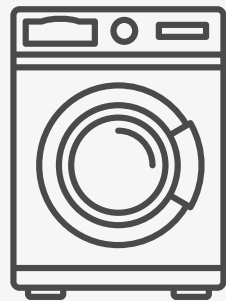


A TEAM OF HELPING HANDS

Who has time to take a day off work to wait for a home repair or parcel delivery? The team at Club Concierge are here to give you a helping hand; whether it's arranging the safe delivery of your post, welcoming guests into your home while you're not there, housesitting while you're away on holiday or receiving your deliveries on your behalf so you will never miss that special parcel or package again.

Club Concierge also has a team of friendly staff who can assist with most odd jobs in your home. From painting, decorating and flat pack assembly, to plumbing and maintenance works, they are here to help!

[clubconcierge.co.uk](https://www.clubconcierge.co.uk)



LAUNDRY SERVICE

The team provides a premium service for dry cleaning clothes ready for the week ahead. Whether it be dry cleaning, wash and dry, or wash, dry and iron, they can do it!



CLEANING

Club Concierge's specialist team of cleaners can save you valuable time, whether it's a one-off, weekly or fortnightly clean, spring clean for the new season or even an emergency session. The team can arrive within three hours of booking if needed and will have your home looking spotless and smelling fantastic.

The trained technicians at Club Concierge also offer carpet and upholstery cleaning.



Out & *about* in TRENT PARK



Beyond the development and its grounds, there is plenty to do in Trent Country Park. Make the most of this fantastic countryside setting and visit some of the park's attractions.

WILDLIFE RESCUE AND AMBULANCE SERVICE

Trent Park's Wildlife Rescue and Ambulance Service is a fantastic organisation run by June and Barry Smitherman MBE, providing a safe home for rescued wildlife that are sick, injured or orphaned. Every year the team rehabilitate hundreds of animals and birds to release back into the wild, or if this is not possible, they are given a home at a specialist sanctuary.

Trent Park's Wildlife Rescue and Ambulance Service provides a safe home for rescued wildlife that are sick, injured or orphaned.



While the whole of Trent Park is lovely, the sanctuary really is the jewel in its crown.

Richard Gardham - Trip Advisor

The centre is open to visitors daily from 10am to 4pm with the tea shop and garden open from 9.30am to 1.30pm.

The centre is run entirely on donations so please give generously if you stop by for a visit!

Visit www.wras-enfieldwildlife.org.uk or call Barry on 0797 014 1282 for more information.





Fancy swapping the rooftop bar for the treetops? Then this daring adventure course is for you! Featuring four freefall Tarzan swings and the longest, fastest zip line in London, the Treetop Challenge is a heart

dropping, thrilling obstacle course in the trees, set in the heart of beautiful Trent Park. What better way to get to know the neighbourhood? Visit goape.co.uk/locations/cockfosters to book your session.

People really friendly and informative. Had a great time :) Would definitely recommend. My kids really want to do it when they're old enough so we will be going back!

Emma Eley - Trustpilot



Enquire today:
020 3925 9403 | Trent-Park.co.uk

LEARN *to ride* at Trent Park's equestrian centre



Learn to ride at Trent Park's equestrian centre, which is open seven days a week with classes for adults and children. Riders have the choice of over 135 horses and ponies suitable for most ages (4yrs+) and abilities, whether you want to hack, jump or simply ride on the flat. The centre offers a range of livery facilities to horse owners, including two international size indoor arenas, a floodlit outdoor manège, cross country course and canter track. There is also an on-site café for lunches and snacks. trentpark.com



My daughter had the most fantastic lesson with the lovely instructor Abbie. The staff are so warm and welcoming, such a well-run equestrian centre. One super happy daughter.

Diana Paine - Facebook

Trent Country Park's *18-hole* GOLF COURSE



Trent Country Park's 18-hole golf course is open to everyone on a 'pay and play' basis. The clubhouse is just 150 metres from Oakwood tube station. What's more, Trent Park Golf Course, which has been voted London's No. 1 public golf course, has added a fantastic jungle-themed adventure golf course called Jungle Falls,

perfect for friends and family of all ages to enjoy a day out, all summer long. It has 18 holes of fun-filled action, packed with life-sized hungry creatures prowling jungle marshes, cascading waterfalls and secret giant caves nestled within a landscape of tropical palm trees.

Visit trentparkgolf.co.uk



Relaxing CAFÉ LIFE at Trent Park

Of course, we have to give special mention to Trent Country Park's own café too. Located near to the main car park, this is a great place to finish off a visit to the country park with a comforting cup of tea and a slice of cake. There's plenty of seating indoors and out.

You will find a smaller tea shop selling drinks and snacks in the Animal Sanctuary at the end of the avenue of lime trees.



The *best* FOOD & DRINK spots in Cockfosters

We're spoiled for choice being so close to Cockfosters Road, which is home to a varied collection of independent coffee shops, cafés and bistros. Whether you're looking for a quick coffee and a fresh sandwich while on the go, or you have a few hours to sit and enjoy a leisurely lunch with friends at the weekend, there is plenty to tempt you. Here's just a few of our favourites:

LA PETITE AUBERGE

A definite favourite for the locals, La Petite Auberge brings French cuisine to north London. You can enjoy all the classics you'd expect, from coq-au-vin to bouef bourguignon, but you can also stop by for a cocktail or two.

12-13 Heddon Court Parade
Cockfosters Road
Barnet EN4 0DB
0208 447 1777
petiteauberge.co.uk



French bistro-
brasserie

DERALIYE

Enjoy a Turkish feast at Deraliye. Follow a selection of hot and cold mezze options with a tasty moussaka or lamb shish with fresh salads. A great place – opulently decorated – to take visiting friends and family. If you don't feel like leaving home, you can also order a takeaway!

98 Cockfosters Parade
Cockfosters Road
Barnet EN4 0DP
020 3417 5270
deraliye.com



Traditional
Turkish Cuisine

MIDDEYS

Middeys Brasserie has it all, whether you're looking for a cold drink and a sweet treat, a filling breakfast to set you up for the day, or a light lunch. A great choice for vegetarians – there is a wide selection of tasty plant-based options.

11 Cockfosters Parade
Cockfosters Road
Barnet EN4 0BX
020 8449 8777
middeysbrasserie.co.uk



British-Med
Fusion Cuisine

HEDDONS KITCHEN

Heddens is an independent café and bistro in the heart of Cockfosters serving a fabulous fusion of Mediterranean and British dishes using fresh, locally-sourced produce. We're big fans of the brunch options (especially the brioche French toast).

19 Heddon Court Parade, Cockfosters Road
020 8449 0255 / heddenskitchen.co.uk

*Great place run by lovely people, food is amazing with a really nice atmosphere...
What more could you ask for!
Just what Cockfoster's needed.*

Danielle Martindale - Facebook

Spotlight on *Bramleys*



Bramleys is a family-owned restaurant based in Oakwood and delivering the freshest seasonal produce – including a selection of foraged goods – to visitors.

The kitchen works with local suppliers to minimise wastage as much as possible and take care of the environment. The excellent food is paired with an exclusive wine list as well as some amazing cocktails, mocktails and spirits.

bramleysrestaurant.co.uk
Instagram: [@bramleysrestaurant](https://www.instagram.com/bramleysrestaurant)



One of the nicest meals I've had in so long. It has the style and taste of a central London restaurant, so happy it's only a few minutes away!

Mollie O'Beirne - Trip Advisor



BRAMLEYS

BAR & GRILL

MENU

SMALL PLATES

Sautéed king prawns, bisque, garlic bread 9.5

Baked goats cheese, figs, pecan & organic honey (V) 9

Wild mushroom bruschetta (V) 8

Teriyaki chicken wings, sesame seeds & crispy rice crackers 7.5

ON THE GRILL

Sirloin steak (270g) watercress & peppercorn sauce 24

Lemon & herb poussin, sautéed fine beans, baby corn & tarragon sauce 18.5

Whole lobster, romain lettuce & garlic butter 32

Lamb chops, tenderstem broccoli, orange & mint slow, rosemary jus 19.5

Aubergine, fried egg, yogurt & cumin & chimichurri 15 (V)

BURGERS

Bramleys beef burger, caramelised onion, asiago cheese, burger sauce, brioche bun 13

Southern fried chicken, smoked jack cheese, harissa mayo, sesame charcoal bun 12.5

Beetroot & red kidney beans patty, turmeric aioli, brioche bun (VF) 12

SIDES

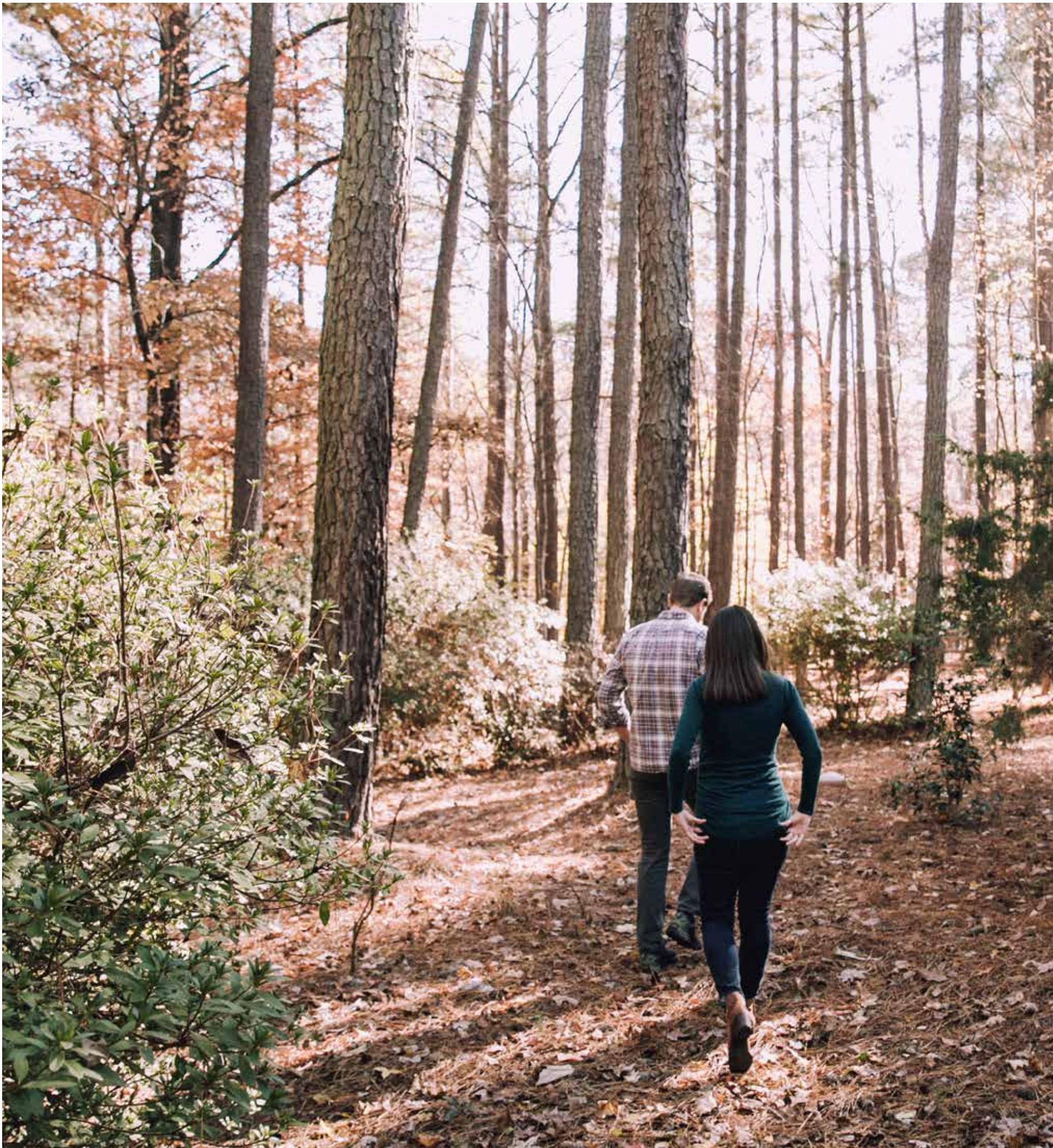
Triple cooked chips 4.5

Fries 3.5

Seasonal greens 4

Mixed leaves 3

Country living or LONDON lifestyle?

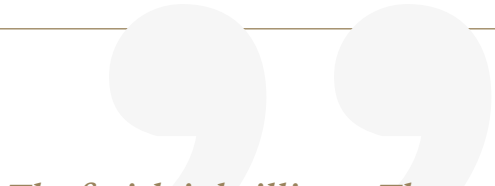


Enquire today:
020 3925 9403 | Trent-Park.co.uk

When buying a home, couples and families can often have very different views of what is most important. Used to living in the country, Alex favoured a countryside setting while the priority for his partner, Claire, was excellent public transport links to travel to work in central London and meet up with family and friends.

Luckily, Alex and Claire, both 26, did not have to compromise when they bought an apartment at Trent Park which delivers on both counts. It enjoys amazing parkland setting, with more than 400 acres of beautiful woodland, lakes and water gardens, yet it is close to two underground stations and less than half an hour by tube to central London.

Alex, who works in recruitment, comments: “I’ve always lived in the country while Claire and her family come from Southgate and she’s used to city living. Trent Park brings the two lifestyles together brilliantly, so we can enjoy the best of both. It’s very rare to



The finish is brilliant. There are big heavy internal doors and high ceilings which makes it feel even more spacious; everything is finished perfectly.



find a development on the outskirts of London with so much open space and yet so accessible to central London.”

Alex and Claire first became aware of Trent Park two years ago, when they drove past the advertising hoardings. When they started house hunting, they were happy to discover that London Help to Buy was available on some of the apartments, bringing them within their financial reach. Visiting Trent Park after the first lockdown lifted in June 2020, they reserved a one-bedroom apartment with a balcony.

Alex and Claire’s apartment is on the first floor of the four-storey Highfield House. From their home, there are lovely views across the stunning Daffodil Lawn. Now moved in and settled, they are very impressed with the quality of their home.

Alex says: “The finish is brilliant. There are big heavy internal doors and high ceilings which makes it feel even more spacious; everything is finished perfectly. We looked at other new builds, but the quality of the finish was nowhere near as good as ours.”

Alex works in Cockfosters and walks through the park to his office. Claire is an executive assistant for an environmental NGO in central London, although she currently works from home. For trips into central London, the couple can catch

the residents’ shuttle bus to Oakwood underground station, less than a mile away, and be in King’s Cross in less than 30 minutes.

The couple plan to take full advantage of their beautiful surroundings. Claire comments: “It’s great to be able to get outside during the day while I’m working from home. We both enjoy going for walks and with so much nature around us there are masses of areas to explore at weekends.”

In their spare time, Claire and Alex will now be able to make full use of the new exclusive residents’ leisure facilities at Trent Park, including the open-air heated swimming pool, state-of-the-art gym and outdoor tennis courts. “It’s handy to have these facilities on site, so we can work out in the gym or take a quick dip in the pool before or after work, without travelling far,” adds Alex.

Claire concludes: “Trent Park is really special. I can’t believe how lucky we are to own a home here. We can enjoy the hustle and bustle of London living and have peaceful surroundings to go home to – it’s perfect for us.”

Meet the team: Development Director LEE SQUIBB



To gain the best insight into a development, we believe you need to speak to those on the ground who are building your new home. Lee Squibb, Trent Park’s Development Director, discusses the importance of keeping the history alive at Trent Park and how Berkeley’s work will shape this development’s future.

WHAT IS YOUR ROLE AT TRENT PARK?

I am the Development Director here at Trent Park. I take responsibility for the overall management of the site from sales and marketing, land and planning through to production, technical and commercial. I also work closely with our construction team, ensuring that we stay on track with our work programme and that we have the correct materials, managing health and safety and keeping our site in an orderly manner.

CAN YOU TELL US A BIT ABOUT TRENT PARK BEFORE BERKELEY ARRIVED?

Where do I start? Trent Park House has the best story to tell. In 1777, it became a private residence for the first time when King George III leased the residence to Sir Richard Jebb. The house and grounds were subsequently expanded and landscaped by various aristocratic owners over the next century or so, before passing into the hands of the socialite Sir Philip Sassoon in 1912.

Sassoon created a fashionable countryside retreat, visited by prominent guests including Sir Winston Churchill, Charlie Chaplin and the young Princess Elizabeth. In World War II, the mansion was used by the War Office as part of its intelligence programme - I think that’s very cool!

We’ve also meticulously restored the site’s landscaping to its former glory after various consultations with Heritage England, who regularly visit the site. 120,000 bulbs have been planted at the scheme’s historic Daffodil Lawn, originally planted by Philip Sassoon.



HOW WILL THE TRENT PARK TEAM KEEP THE SITE’S HISTORY ALIVE?

It is really important to us that as well as delivering the new homes, we remember the site’s rich history. Our expert team of craftspeople are restoring and converting the Grade II Listed buildings including Trent Park House and the beautiful orangery, as well as various statues, the open-air swimming pool and the Stable Block which will feature more new homes.

Trent Park House will retain its red-brick façade – originally created by Sassoon – and internally, many period details are being preserved, including the original windows which are being carefully refurbished.

We’ve also meticulously restored the site’s landscaping to its former glory after various consultations with Heritage England, who regularly visit the site. 120,000 bulbs have been planted at the scheme’s historic Daffodil Lawn, originally planted by Philip Sassoon. Wisteria Walk – once part of the main house and used by famous figures such as Winston Churchill in its heyday, has also been restored.

WHY SHOULD SOMEONE BUY A BERKELEY HOME AT TRENT PARK?

There are so many reasons! I think Trent Park offers a once in a lifetime opportunity to purchase a home in a historical setting, which is only 20 minutes’ away from central London. You genuinely can’t find a development like this in London, surrounded by 413 acres of parkland – it truly is one of the last opportunities to buy a home somewhere like this.



Computer Generated Image of Trent Park, indicative only



Contemporary & elegantly crafted Carlton House

Available now

A selection of 2 and 3 bedroom
apartments located at the heart
of the development overlooking
the historic Daffodil Lawn.



*Contact our sales team
for more information*

020 3925 9403

Computer Generated Image, indicative only

CONTACT US

Sales & Marketing Suite

Trent Park, Snakes Lane
(off Bramley Road), Enfield,
London EN4 0PS

Open daily 9am - 5pm

To arrange a viewing
please contact:

020 3925 9403 | Trent-Park.co.uk

Viewings are by appointment only due to Covid restrictions, and we kindly
request all visitors to be mindful of our residents and respect their privacy.



Berkeley
Designed for life