



THE
EIGHT
GARDENS
Watford

40

Things about Watford

Berkeley
Designed for life

CONTENTS

HISTORY

PAGE 5 - 20

GREENERY

PAGE 21 - 24

ART

PAGE 25-28

CELEBRITY

PAGE 29 - 36

GROWTH

PAGE 37 - 39

EDUCATION

PAGE 40 - 43

FOOD

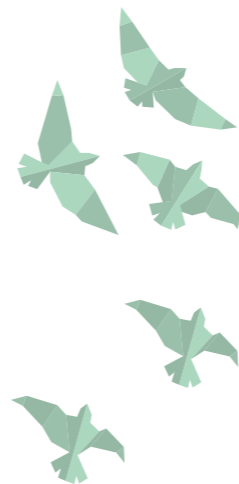
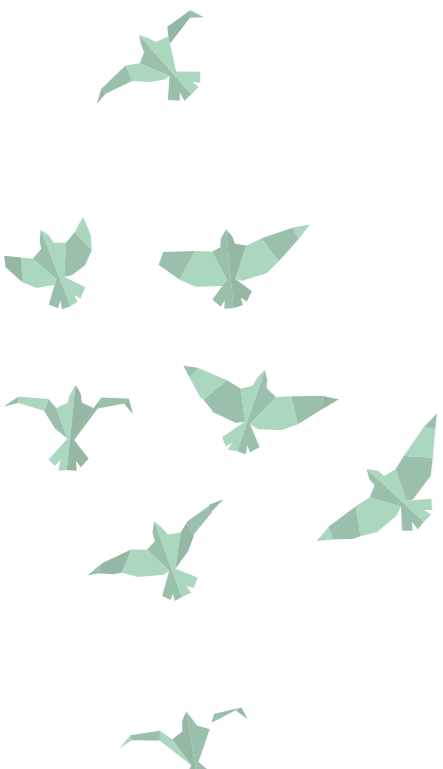
PAGE 44 - 48

ACTIVITIES

PAGE 49 - 53

BIG BUSINESS

PAGE 54 - 55





HISTORY

OF WATFORD



THE GREAT EAGLE

MORTIMER

CAWDELL'S

CAWDELL
DRAPER

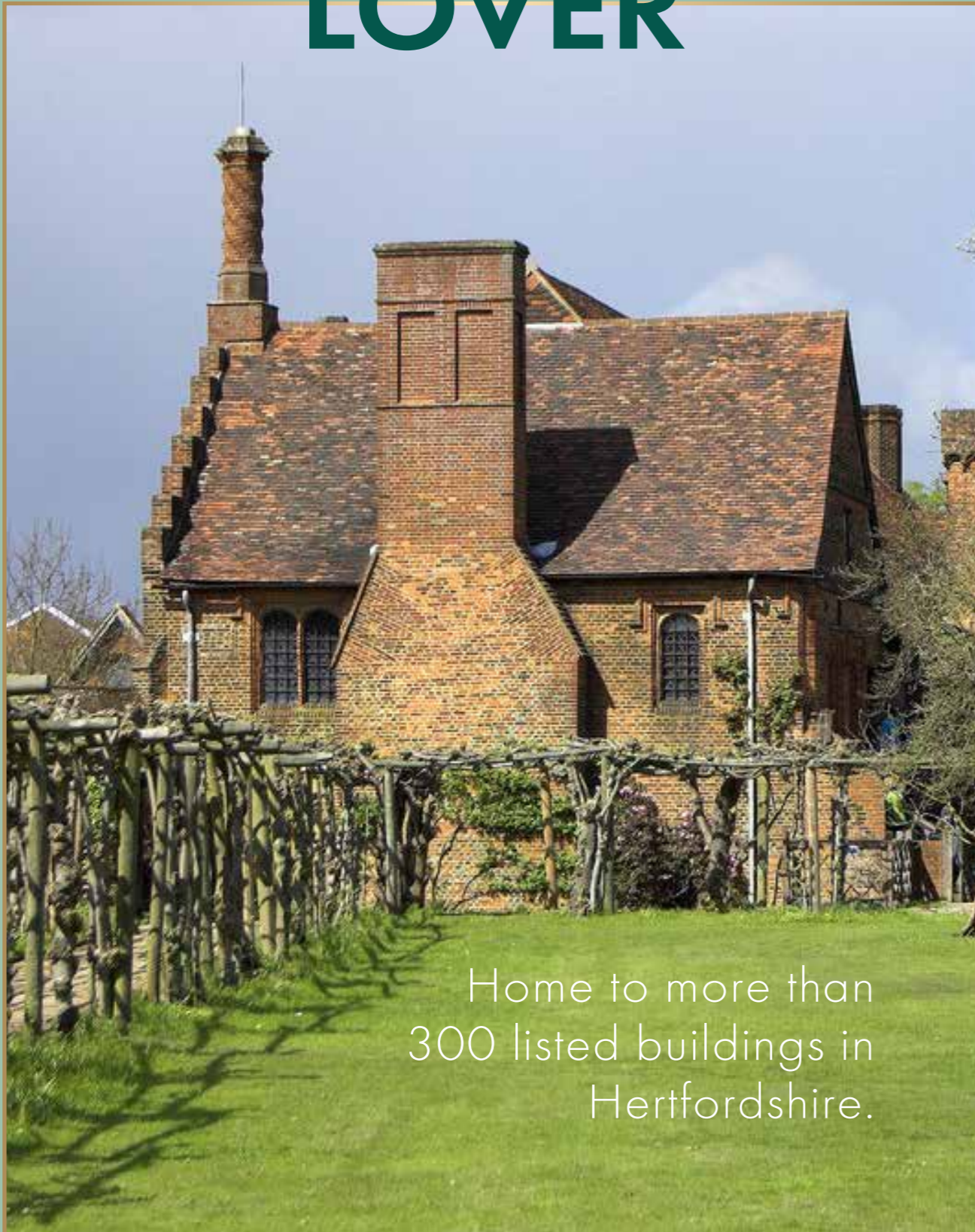
CAWDELL

The
READING HOUSE
FOR
GENERAL & FANCY
DRAPER

WATFORD CITY AND...

01

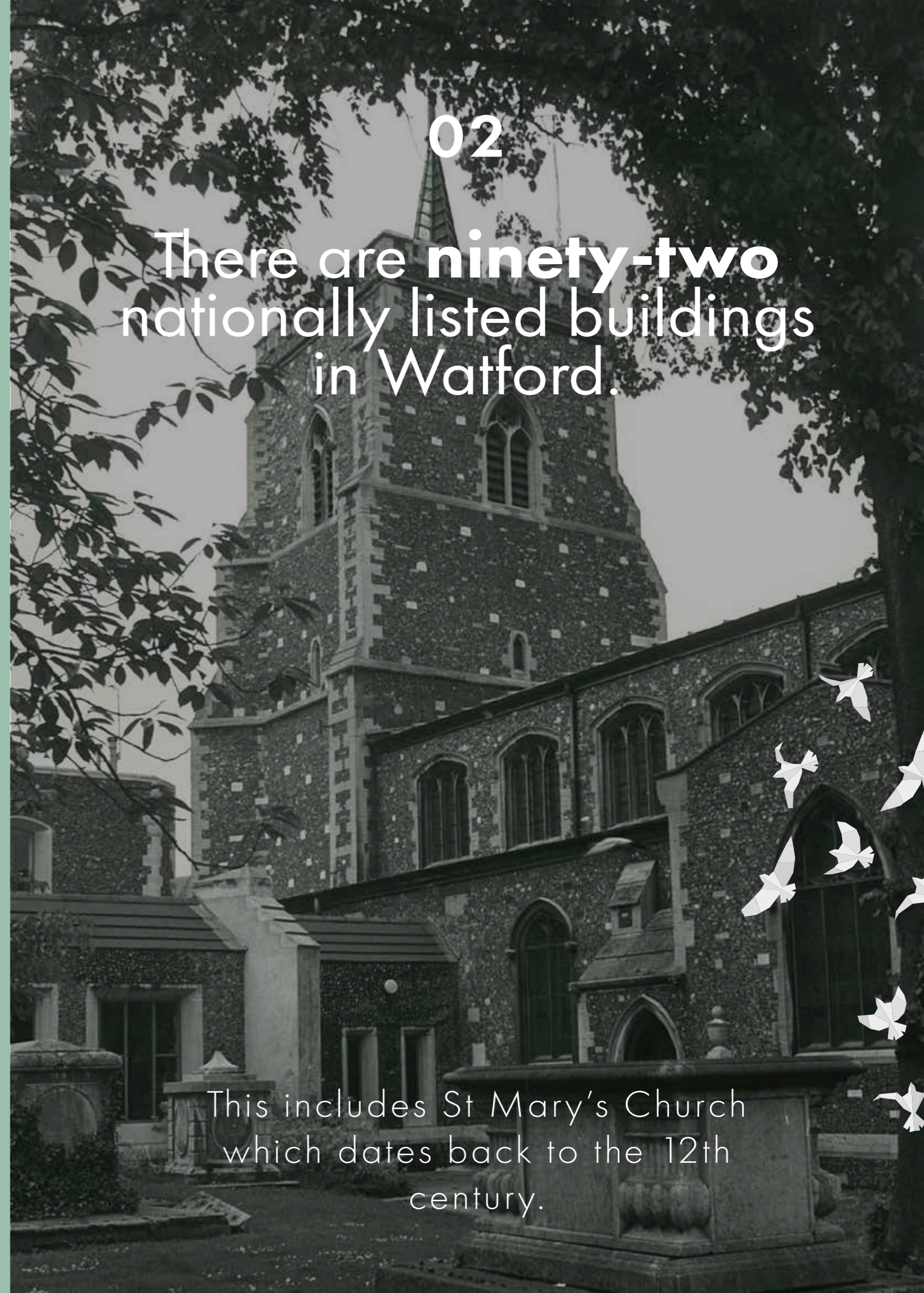
LISTED LOVER



Home to more than
300 listed buildings in
Hertfordshire.

02

There are **ninety-two**
nationally listed buildings
in Watford.



This includes St Mary's Church
which dates back to the 12th
century.

05

TAKE A SEAT!

In the 1950's and 1960's, Watford was home to the British furniture designer and manufacturer, Hille.



Robin Day was without doubt one of the most influential British furniture designers of the 20th century. At their premises on St Albans Road, the polypropylene moulded stacking chairs was conceived, selling around 50 million units since the launch of the Poly side chair in 1963.

06

The only Englishman to ever become Pope. **Pope Adrian IV**, was born Nicholas Breakspear in Abbots Langley in 1100 AD.



07

CATHERINE OF ARAGON

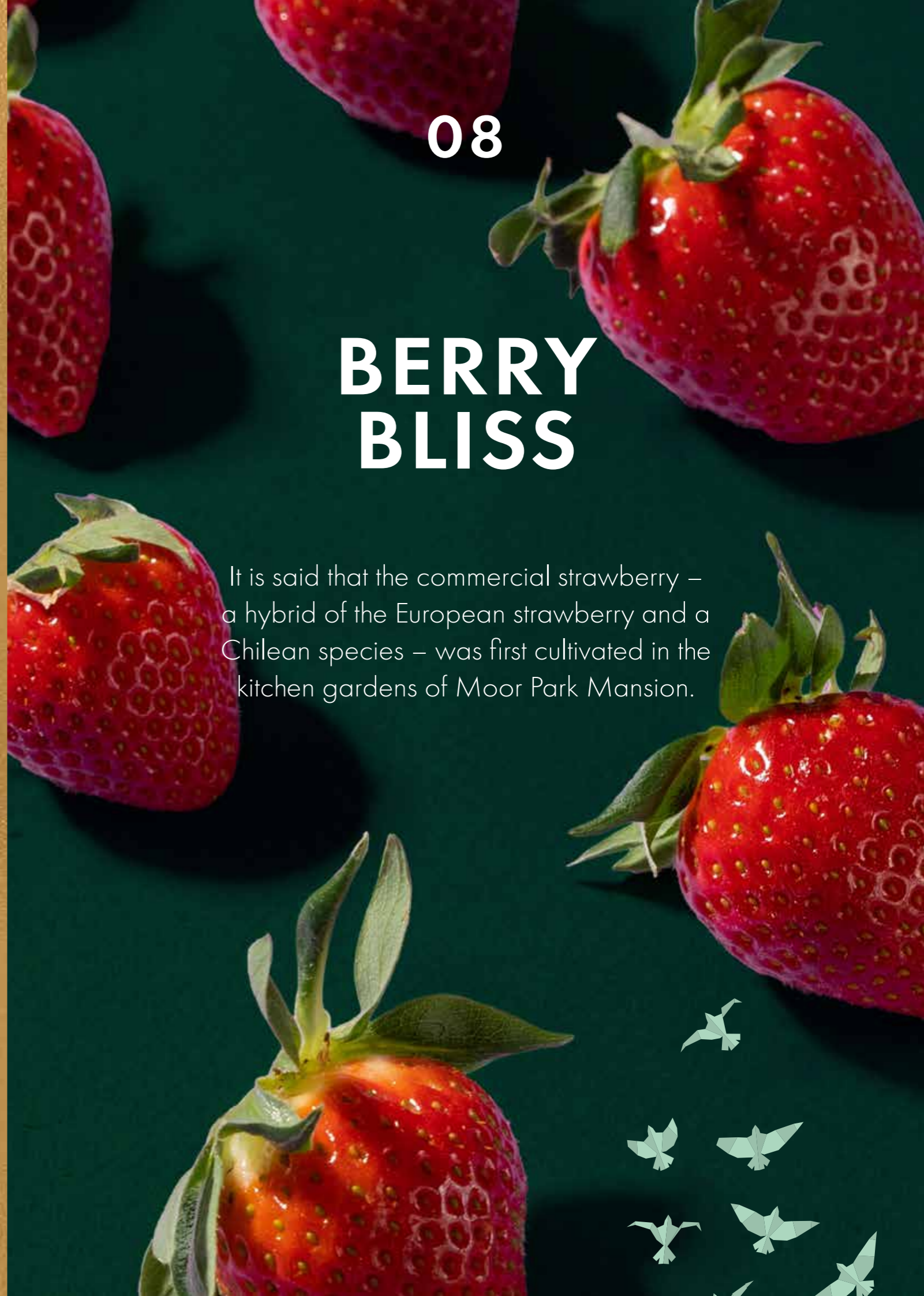
Following the annulment of her marriage to Henry VIII in 1533, Catherine of Aragon lived at the Manor of the More, a 16th century palace in Rickmansworth.



08

BERRY BLISS

It is said that the commercial strawberry – a hybrid of the European strawberry and a Chilean species – was first cultivated in the kitchen gardens of Moor Park Mansion.



09

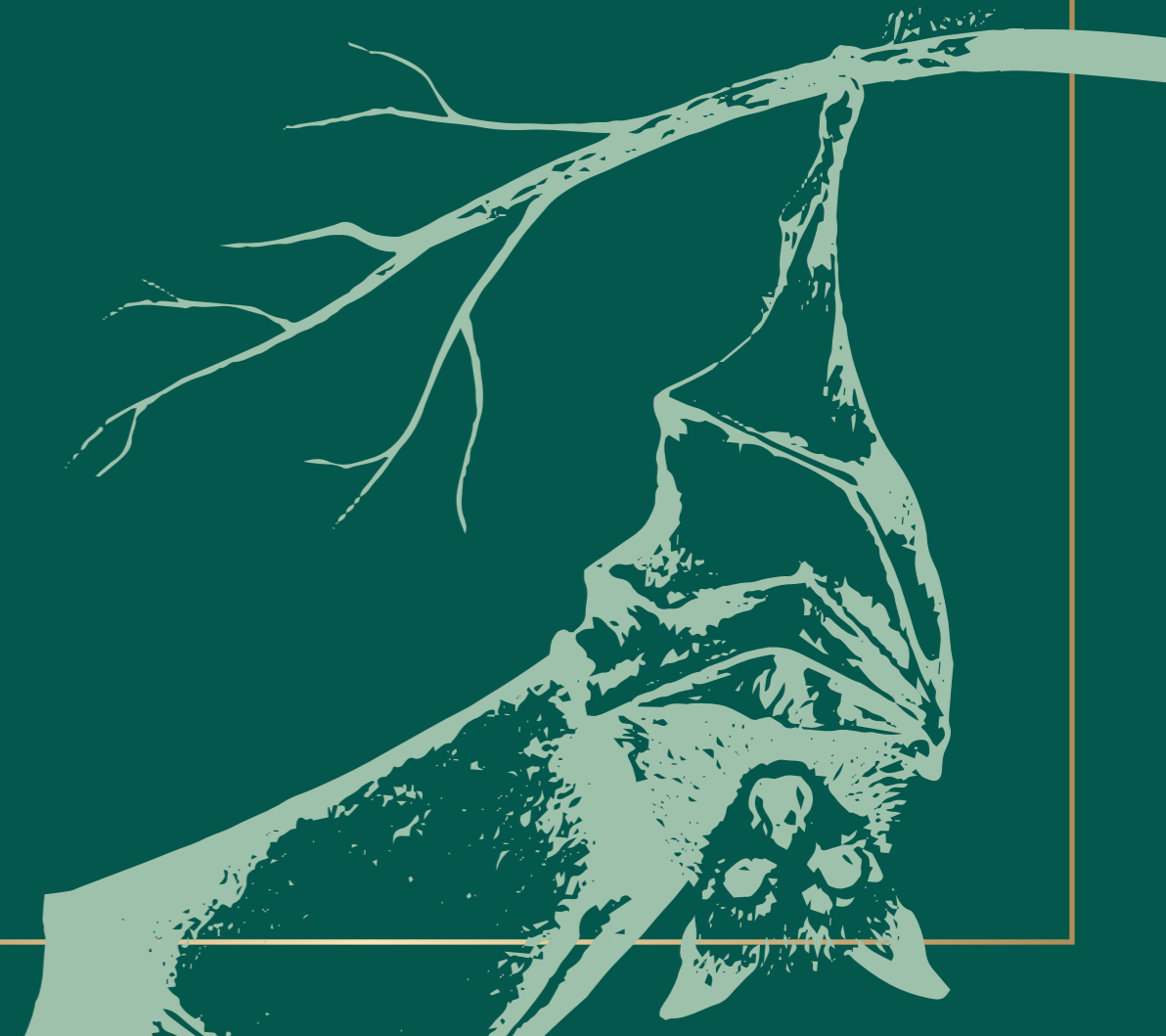
THE CROQUET CHRONICLES

In the 1860s, the gardens of Cassiobury House were one of the first places in Britain in which croquet was played.

10

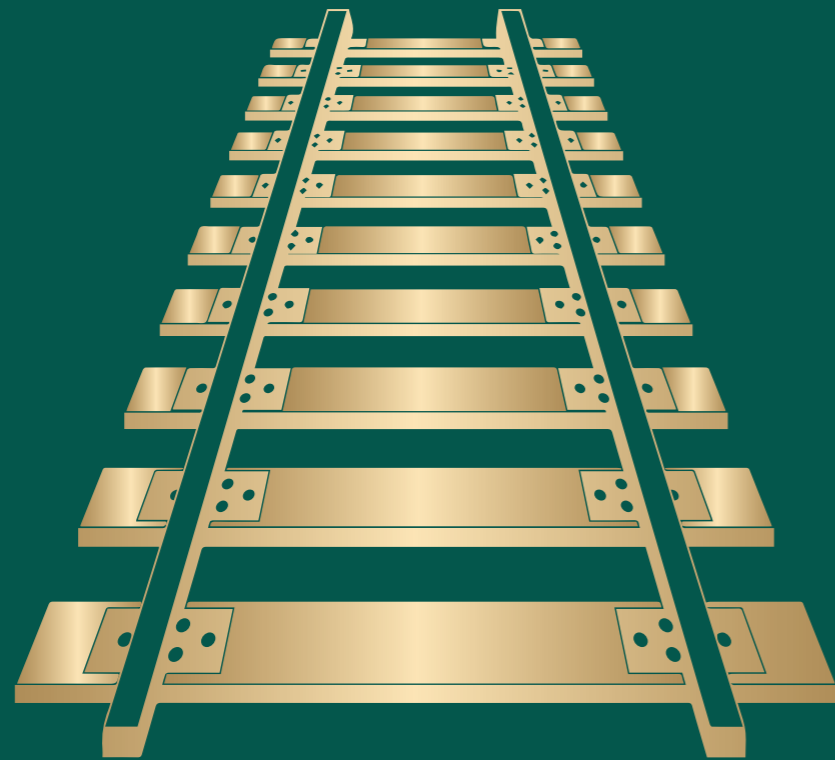
BATTING AROUND

Six air raid shelters dating from World War II can still be seen in the grounds of The Grove hotel. They are now home to one of England's largest colonies of Pipistrelle bats.



11

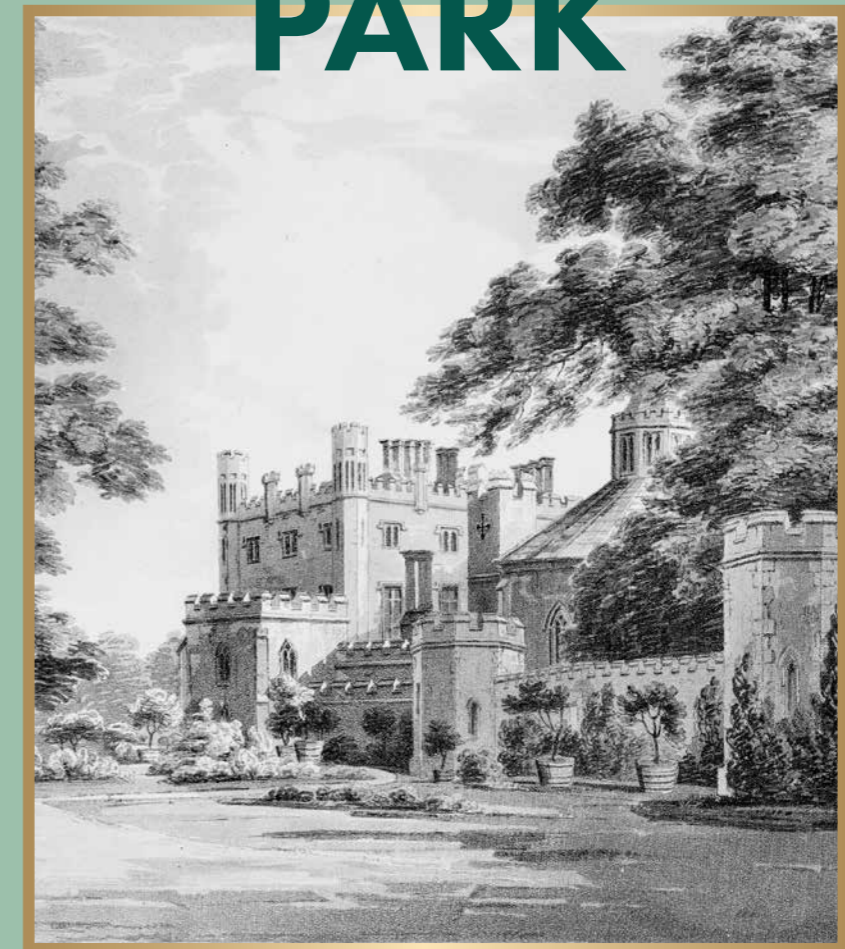
PROJECT X



In the 1940s, The Grove became the secret wartime HQ for the London, Midland & Scottish Railway. Of great strategic importance, it was called simply 'Project X'.

12

CASSIOBURY PARK



Cassiobury Park has a Grade II listing on the English Heritage register of parks and gardens of special historic interest, and was owned by the Earls of Essex.

13

AERODROME ZONE



In 1940 Watford was home to the Leavesdon Aerodrome and was acquired by the Ministry of Defence to support the war effort. It was transformed into a production base for thousands of aircraft, including the Halifax Bombers and the Mosquito Combat aircraft.





GREENERY

AROUND US

14

Home to more than **740 acres** of public open spaces.



15

**DID YOU
KNOW?**



Cassiobury Park is twice the size of London's Hyde Park.

16

PARK PARADISE



There are 50 parks and green spaces in Watford, one of which is Cassiobury Park. Covering approximately 250 hectares, it is Watford's largest park often referred to as 'the jewel in Watford's crown'. The park has been enhanced with Heritage Lottery award funding and has also been awarded a Green Flag status.





ART & CULTURE

APPRECIATION

17

JAZZ IT UP



Watford is home to the largest free Jazz Festival in the whole of the UK, celebrating it's 10th year in 2023.

18

MAY THE FORCE BE WITH YOU



Watford Colosseum is well-known for its acoustic qualities and has been regarded as one of the best in Europe. It has also been used to record the soundtracks of The Lord of the Rings, The Sound of Music and Star Wars.

19



JAMES BOND "**GOLDENEYE**" WAS THE FIRST FILM TO SHOOT AT THE LEAVESDEN STUDIOS.

20

ENTERTAINMENT FOR ALL



Warner Brothers purchased Leavesden Studios in 2010 and became the first major Hollywood production company to establish a studio outside of the US.



CELEBRITY

SPOTLIGHT

21

STEP INTO CHRISTMAS

Sir Elton John proudly shows off his Watford AFC membership card in his video:
"Step into Christmas."

22

FOOTBALL FANATIC



Sir Elton John is a long time fan of Watford FC since the age of 5, all the way up to taking the role of Chairman for 16 years. In 2014 the club unveiled the 'Sir Elton John Stand' with Elton quoting the occasion as 'One of the greatest days of my life'.

23

ANTHONY JOSHUA

Did you know that two-time world heavyweight and Olympic Gold Medallist Anthony Joshua hails from Watford? The WBA, IBF, WBO and IBO title holder grew up in the area saying "I really feel that Watford is still running through my veins."

24

England Manager **Gareth Southgate** was born in our great town.



25

NAUGHTY BOY'S BEAT

Famous DJ, Naughty Boy was born, raised and still lives in Watford.

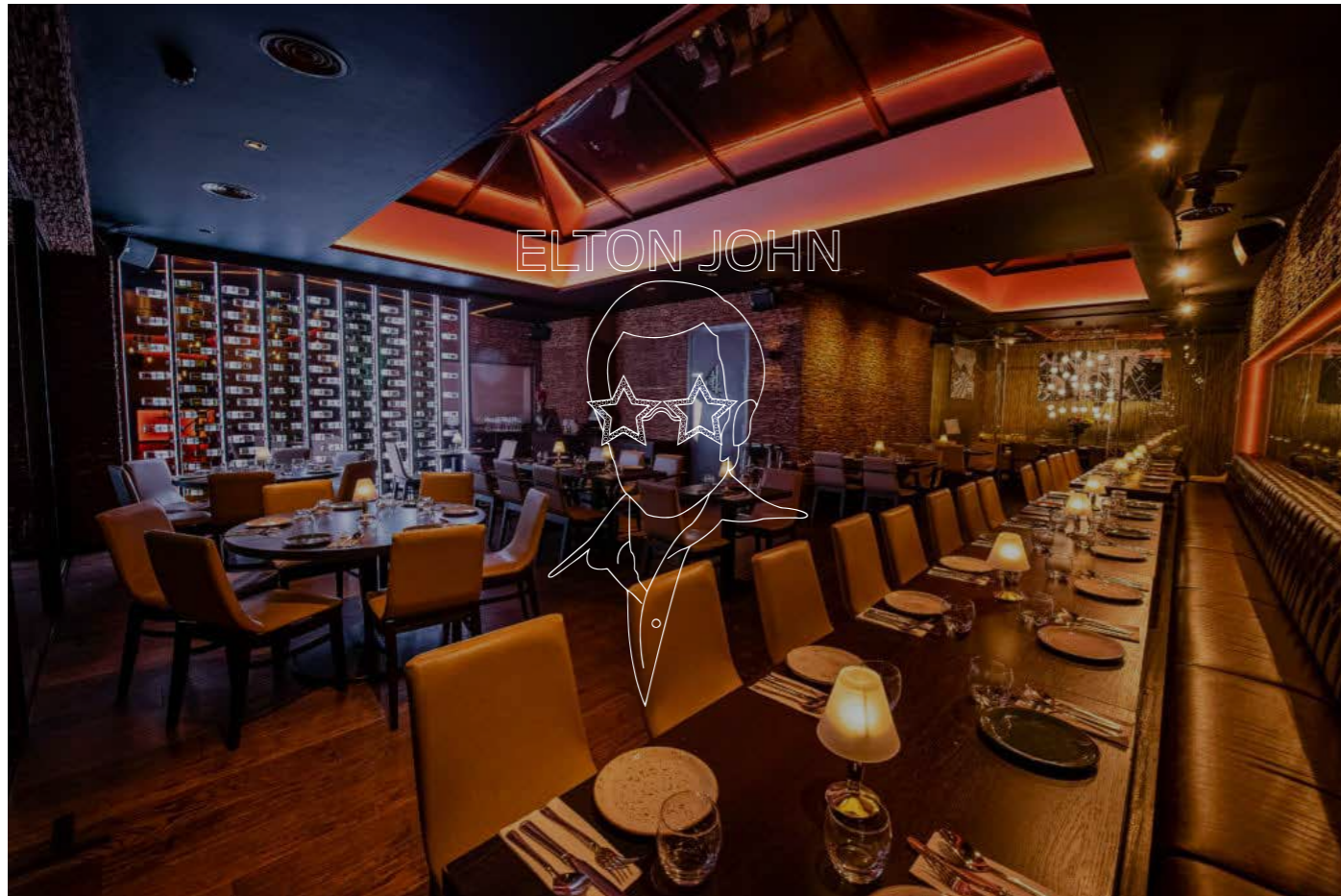
26

GEORGE MICHAEL

was also local to our great town being born in Bushey.

27

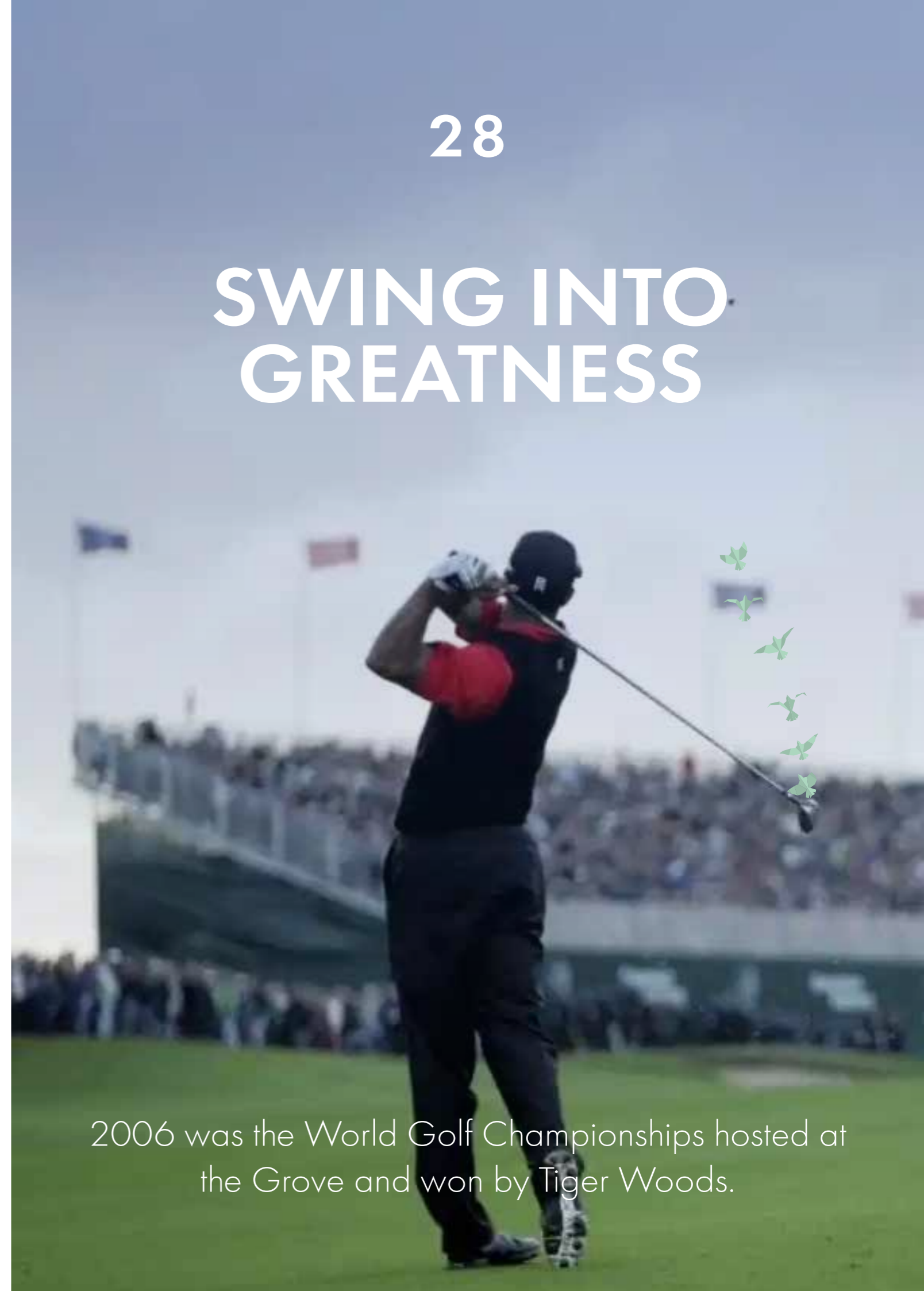
THE NAMASTE LOUNGE



Sir Elton John performed his first gig at The Namaste Lounge Pub, Northwood Hills.

28

SWING INTO GREATNESS



2006 was the World Golf Championships hosted at the Grove and won by Tiger Woods.

GROWTH



29

Population Increase

Between the last two censuses (held in 2011 and 2021), the population of Watford increased by 13.2%, from around 90,300 in 2011 to around 102,200 in 2021.

30

THE AVERAGE AGE OF A WATFORD RESIDENT IS:



31

HOME SWEET HOME

Watford saw England's second-largest percentage-point rise in the proportion of privately-rented homes (from 20.1% in 2011 to 28.2% in 2021). England's largest increase in the percentage of privately-rented homes occurred in City of London (from 35.9% to 48.3%).

32

DISCOVER & EXPLORE

Watford Junction Station currently welcomes 8 million visitors every year.





EDUCATION

SHAPING FUTURES

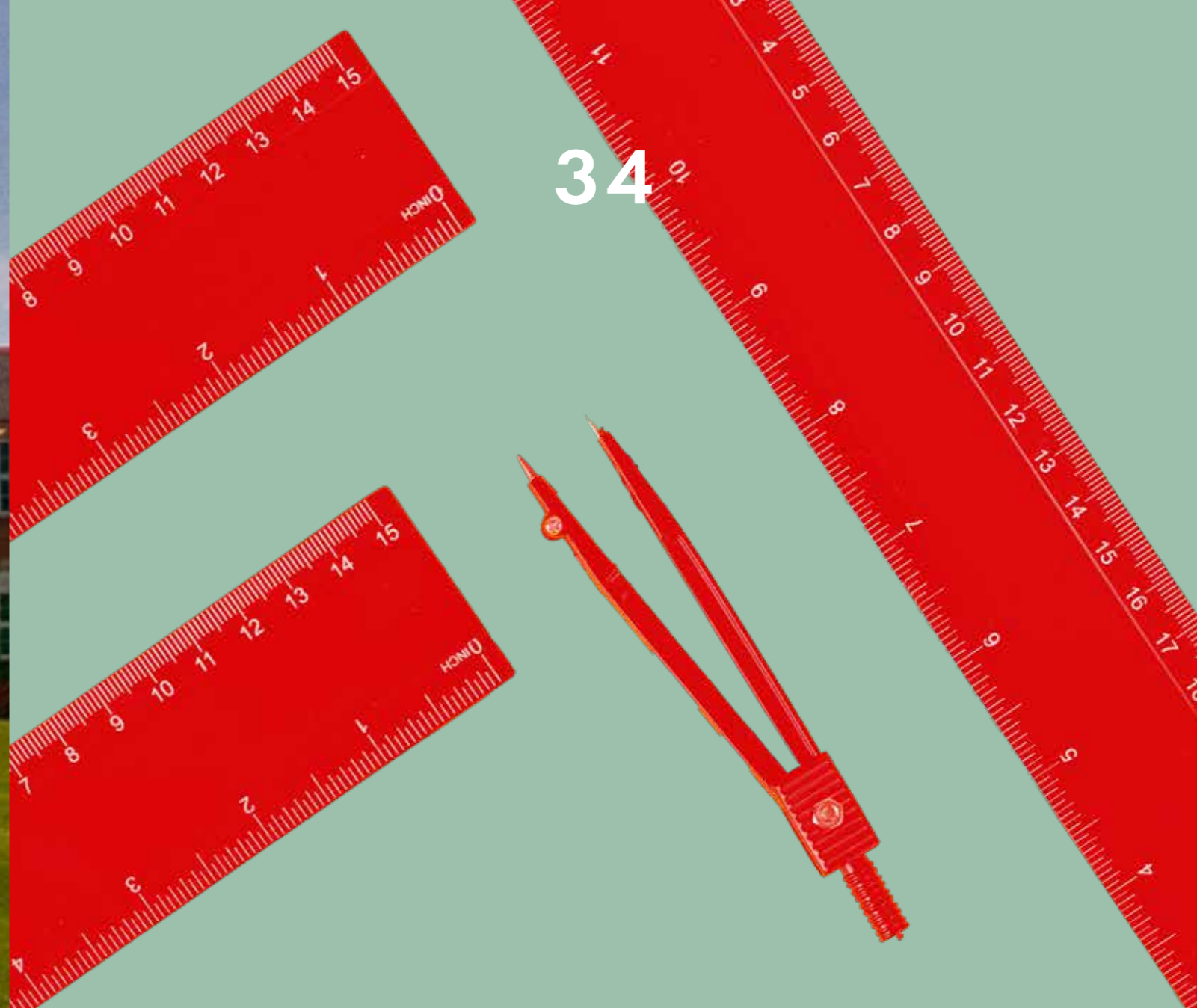
33



LEADING EDUCATION

The Sunday Times has placed Watford Grammar School for Girls amongst the top 20 leading state secondary schools in the South East and among the top 75 in the UK.

34



80% of pupils in Hertfordshire reached grade **5 or higher** in English and Mathematics in 2022. The national average is 51.9%.



FOOD

BITE INTO BLISS

35

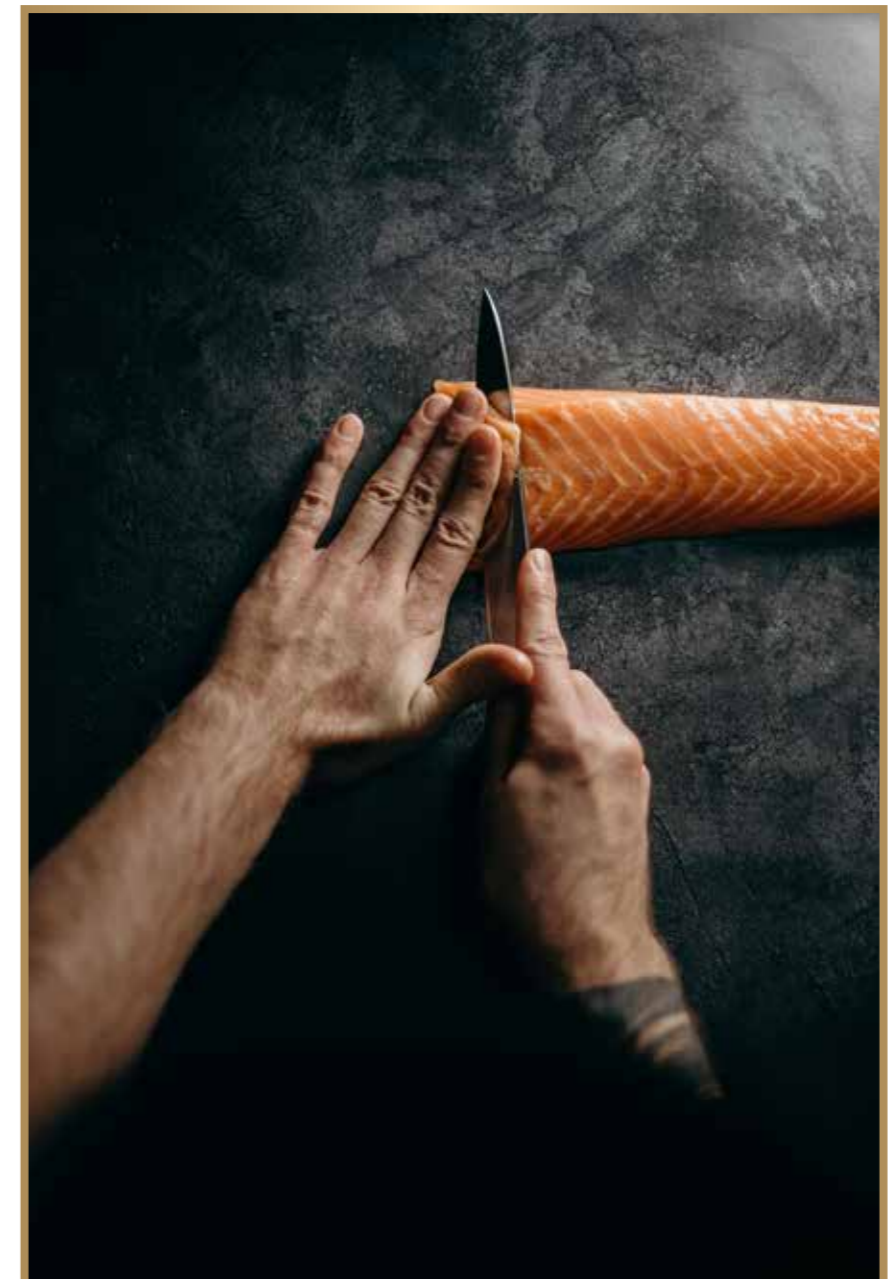
A Constellation of Flavour

There are 8 Michelin Restaurants within Hertfordshire including The Zebra Riding club and Thompson in St Albans.

36

EAT LOCAL

There are **87 restaurants** within a 5 mile radius of The Eight Gardens.





HOGWARTS EXPRESS

5972

ACTIVITIES

ADVENTURE AWAITS

37

TEE UP SUCCESS



There are 77 golf courses in the county including The Grove golf course.

38

The Atria Shopping centre is in the **top 20 largest shopping centres** in the UK.

39



The Wizarding World of **Harry Potter** is located only 10 minutes away from The Eight Gardens.

40

Watford has something for **EVERYONE.**



From a 9 screen cinema, bowling or even indoor skiing at the snow centre.



www.theeightgardens.co.uk

Berkeley
Designed for life