



TERRACE COLLECTION

- THE HEIGHT OF CONTEMPORARY LIVING -



THE HEIGHT OF CONTEMPORARY LIVING A PERFECT PLACE TO CALL HOME

Just six contemporary south and east facing apartments, overlooking beautiful private podium gardens with views of the River Colne.

Ranging from the ground floor to the fifth floor, each of these apartments incorporate expansive terraces and living areas finished to a fantastic specification. A lobby and a gated undercroft car parking area, adding to the appeal of these apartments in Watford, Hertfordshire.

All ready to move in now.



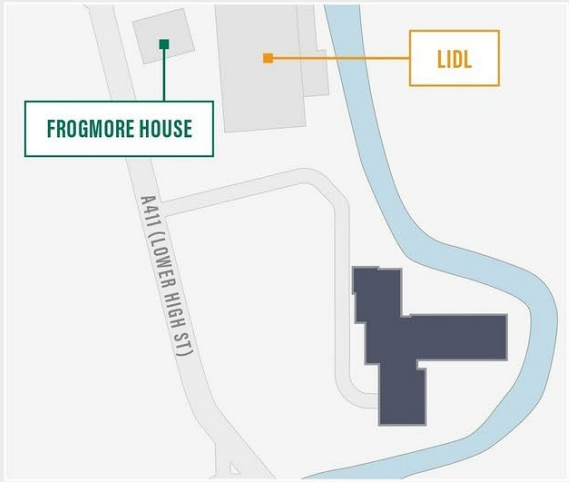
Showhome Photography



Lifestyle image is indicative only



Site plan



THE ARCHES

Suite	4
One Bedroom Apartments	27
Two Bedroom Apartments	61
Total	92

-  Communal Green Areas
-  Footpath
-  Apartment Building
-  River Colne



The plan is indicative only and subject to change. In line with our policy of continuous improvement we reserve the right to alter the layout, building style, landscaping and specification at any time without notice.

Terrace views





FLOORPLANS

TYPE 2 - THE ROSE APARTMENT

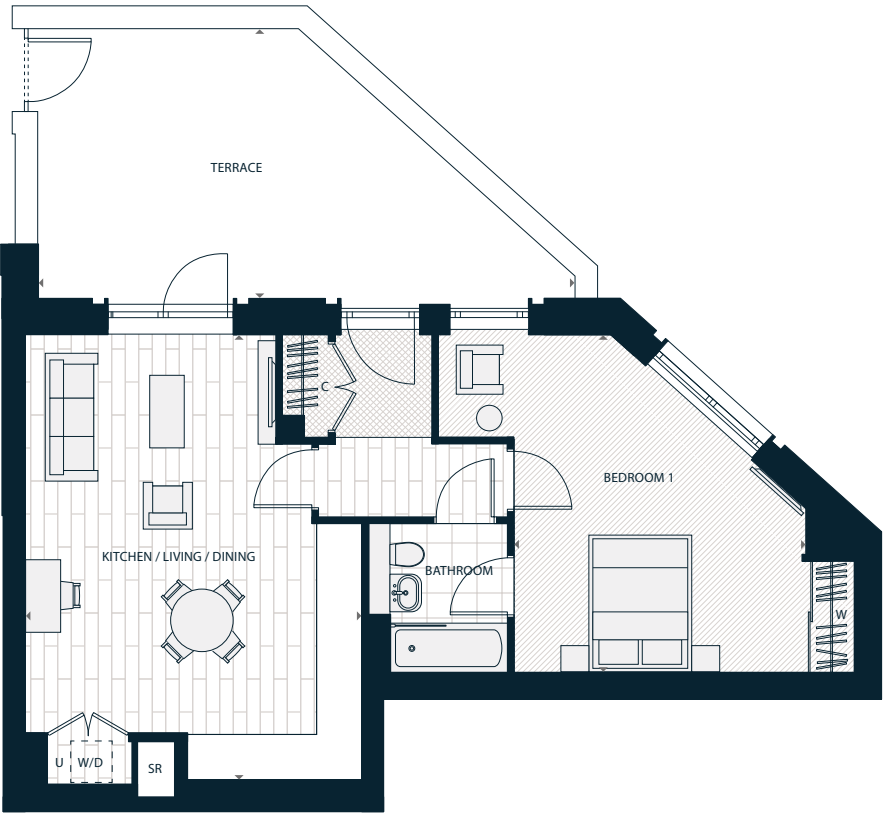
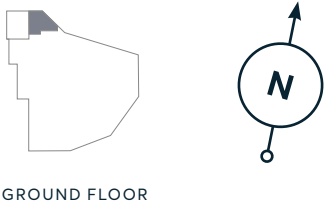
One Bedroom Apartment

A2

TYPE 10 - THE EVERGREEN APARTMENT

Two Bedroom Apartment

A10

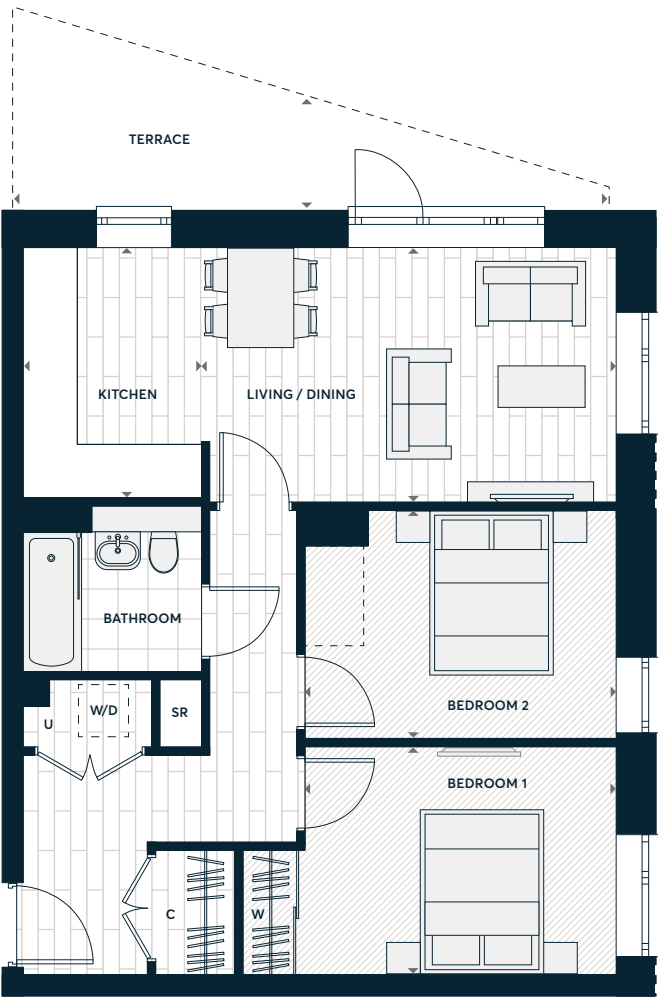


33

Accommodation

Kitchen / Living / Dining	6.44 m x 4.87 m	21'2" x 16'0"
Bedroom One	4.88 m x 4.23 m	16'0" x 13'11"
Total Internal Area	60.9 sq m	655.5 sq ft
Terrace	23.2 sq m	249.7 sq ft

◀▶	Measurement Points
W	Fitted Wardrobe
-----	Optional Wardrobe
W/D	Washer/Dryer (optional extra)
U	Utility Cupboard
C	Coat Cupboard
SR	Service Riser



41

Accommodation

Kitchen	3.01 m x 2.15 m	9'11" x 7'1"
Living / Dining	5.01 m x 3.06 m	16'5" x 10'1"
Bedroom One	3.76 m x 2.75 m	12'4" x 9'0"
Bedroom Two	3.76 m x 2.75 m	12'4" x 9'0"
Total Internal Area	62.7 sq m	674.9 sq ft
Terrace at Podium	9.8 sq m	105.4 sq ft

◀▶	Measurement Points
W	Fitted Wardrobe
-----	Optional Wardrobe
W/D	Washer/Dryer (optional extra)
U	Utility Cupboard
C	Coat Cupboard
SR	Service Riser

TYPE 11 - THE LAVENDER APARTMENT

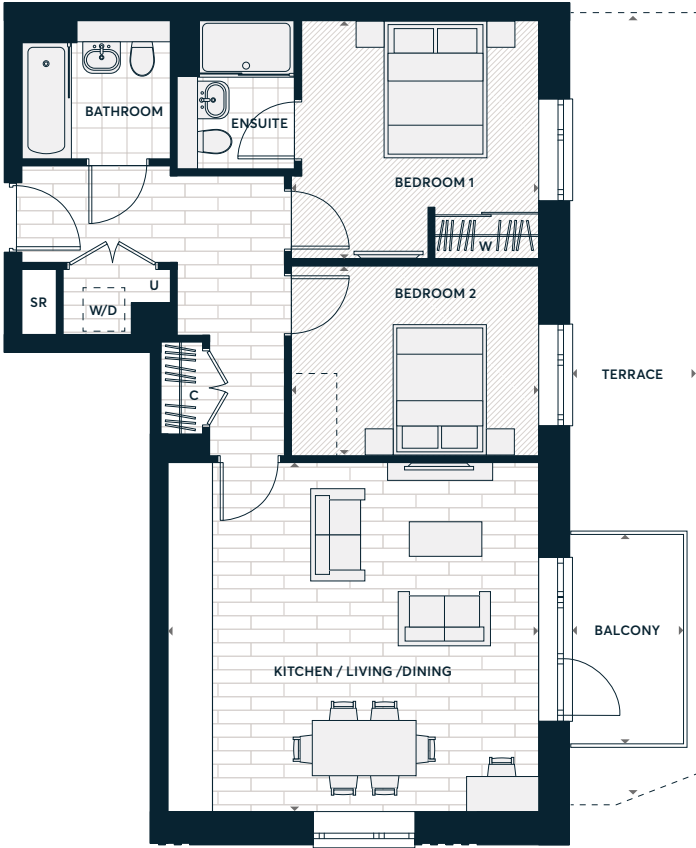
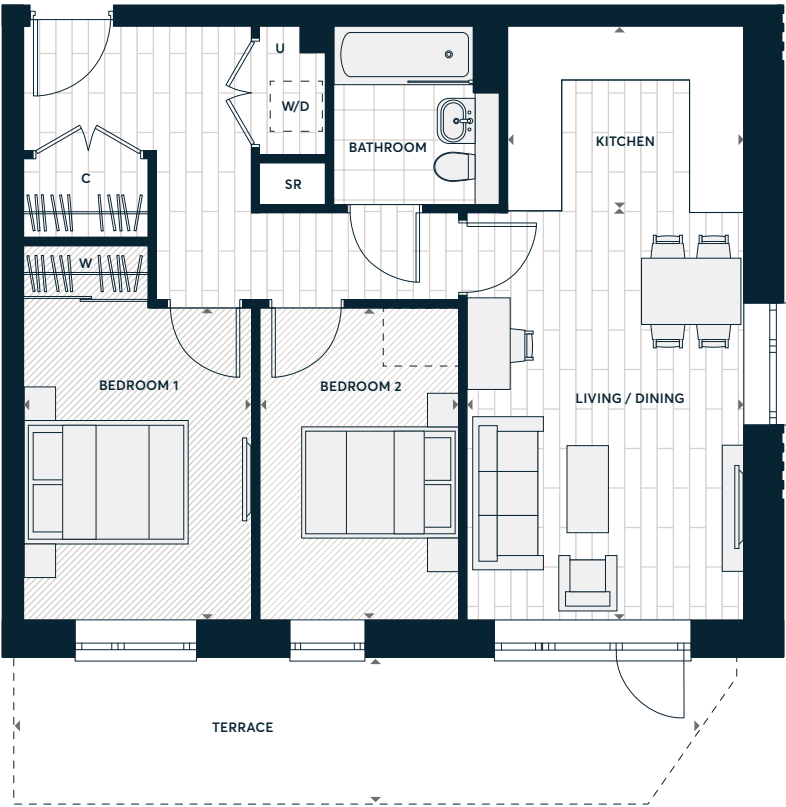
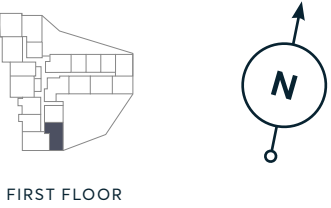
Two Bedroom Apartment

A11

TYPE 16 - THE DAHLIA APARTMENT

Two Bedroom Apartment

A16



Accommodation

Kitchen	2.84 m x 2.25 m	9'4" x 7'5"
Living / Dining	4.91 m x 3.33 m	16'1" x 10'11"
Bedroom One	3.76 m x 2.75 m	12'4" x 9'0"
Bedroom Two	3.76 m x 2.40 m	12'4" x 7'10"
Total Internal Area	62.2 sq m	669.5 sq ft
Terrace at Podium	15.2 sq m	163.6 sq ft

◄ ►	Measurement Points
W	Fitted Wardrobe
-----	Optional Wardrobe
W/D	Washer/Dryer (optional extra)
U	Utility Cupboard
C	Coat Cupboard
SR	Service Riser

Accommodation

Kitchen / Living / Dining	5.05 m x 5.36 m	16'7" x 17'7"
Bedroom One	3.57 m x 3.45 m	11'9" x 11'4"
Bedroom Two	3.61 m x 2.75 m	11'10" x 9'0"
Total Internal Area	71.3 sq m	767.5 sq ft
Balcony	5.0 sq m	53.8 sq ft
Terrace at Podium (Plot A16 only)	20.8 sq m	223.8 sq ft

◄ ►	Measurement Points
W	Fitted Wardrobe
-----	Optional Wardrobe
W/D	Washer/Dryer (optional extra)
U	Utility Cupboard
C	Coat Cupboard
SR	Service Riser

Note: Plot A16 with terrace instead of balcony (podium)

TYPE 23 - THE HUMMINGBIRD APARTMENT

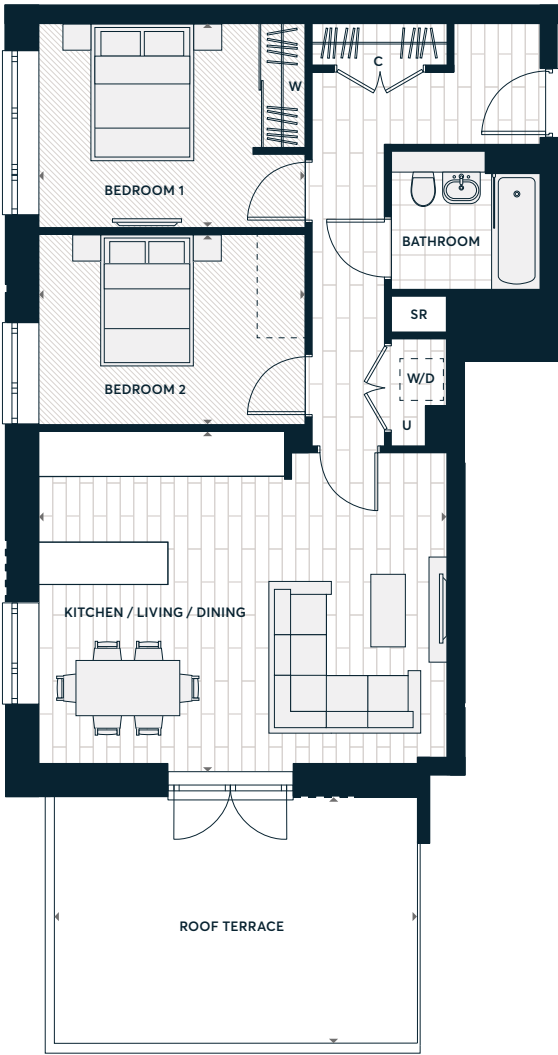
Two Bedroom Apartment

A77

TYPE 24 - THE SAGE APARTMENT

Two Bedroom Apartment

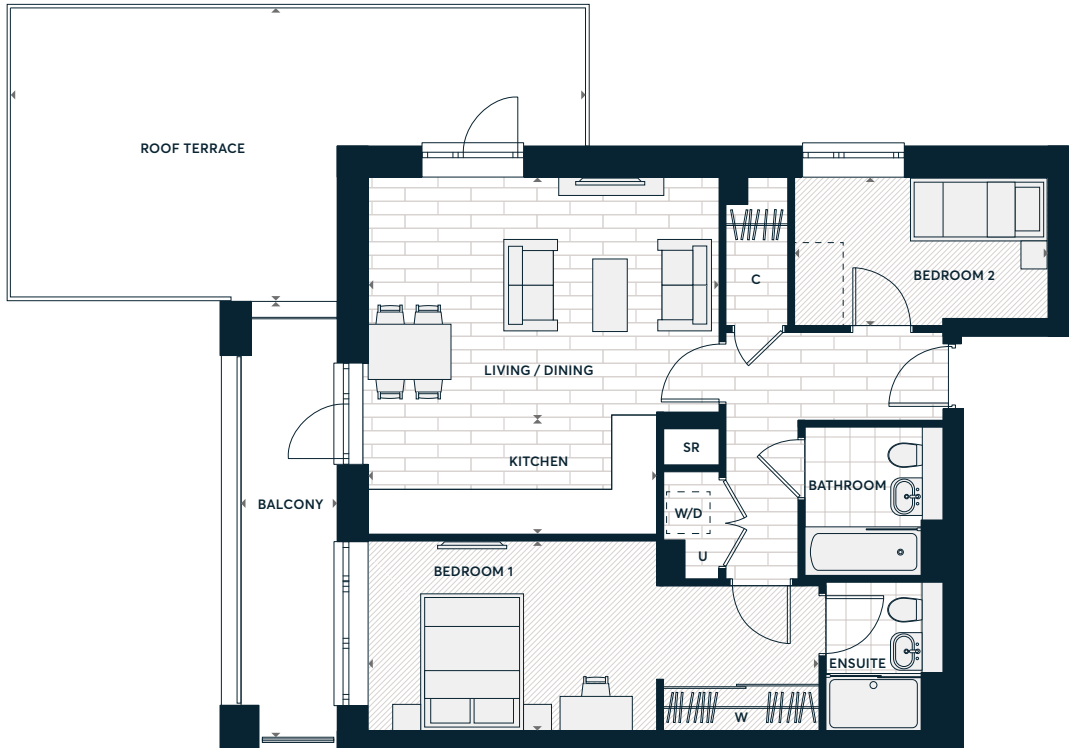
A92



Accommodation

Kitchen / Living / Dining	5.90 m x 4.81 m	19'4" x 15'9"
Bedroom One	3.86 m x 2.96 m	12'8" x 9'9"
Bedroom Two	3.86 m x 2.75 m	12'8" x 9'0"
Total Internal Area	68.5 sq m	737.3 sq ft
Roof Terrace	18.8 sq m	202.3 sq ft

◄ ►	Measurement Points
W	Fitted Wardrobe
-----	Optional Wardrobe
W/D	Washer/Dryer (optional extra)
U	Utility Cupboard
C	Coat Cupboard
SR	Service Riser



Accommodation

Kitchen	4.17 m x 1.76 m	13'8" x 5'9"
Living / Dining	5.07 m x 3.41 m	16'8" x 11'2"
Bedroom One	6.53 m x 2.75 m	16'8" x 9'0"
Bedroom Two	3.67 m x 2.15 m	12'0" x 7'1"
Total Internal Area	69.9 sq m	752.4 sq ft
Balcony	8.5 sq m	91.4 sq ft
Roof Terrace	26.9 sq m	289.5 sq ft

◄ ►	Measurement Points
W	Fitted Wardrobe
-----	Optional Wardrobe
W/D	Washer/Dryer (optional extra)
U	Utility Cupboard
C	Coat Cupboard
SR	Service Riser



Comfortable
spaces

MEET THE TEAM

BETZY DINESEN

HEAD OF SALES

HONEY HONAR

SALES CONSULTANT

MITCHELL BOWEN

PROJECT SALES MANAGER

CARA COOK

SALES CONSULTANT

CONTACT DETAILS

The Arches Sales and Marketing Suite,
1 Frogmore Avenue, Watford,
Hertfordshire, WD17 2AW

020 3918 3315

sales.thearches@stwilliam.co.uk

www.thearcheswatford.co.uk



Showhome Photography at The Arches

