



SNOW HILL  
WHARF

BIRMINGHAM

*Last 2 Bedroom Apartments*

*Ready to call home today*

**St Joseph**  
Designed for life



## *Snow Hill Wharf*

On a quiet stretch of the canal enjoying a prime location in Birmingham, Snow Hill Wharf is a collection of stylish and contemporary apartments created by St Joseph, part of the Berkeley Group.

Snow Hill Wharf offers a wealth of exclusive residents' facilities designed to support your busy lifestyle. The 24-hour concierge service is there for your convenience. While the gym, sauna and steam room, cinema room, business meeting rooms and private gardens form part of your extended home.

Snow Hill Wharf is currently at 96% occupancy with its last 2 & 3 bedroom apartments available.

## *2 Bedroom Apartments*

C601 - £350,000

A007 - £355,000

A207 - £360,000

A106 - £360,000

A407 - £370,000

A107 - £370,000

A104 - £425,000



# Apartment C601

£350,000

**A 2 bedroom, 2 bathroom 769 sq. ft apartment located on the sixth floor of The Fazeley. This home is preloved and is being sold with furnishing and interiors.**

The thoughtfully designed home benefits from high-specification interior finishes and a balcony measuring 60 sqft, which enjoys views out on to the private gardens.

The apartment features a spacious open plan kitchen, living and dining area, with large windows, which allow natural light to fill the home. The contemporary designed kitchen includes a full range of integrated appliances, including a Bosch induction hob and oven.

The principle bedroom includes extensive fitted wardrobes and has a private ensuite, which includes a walk-in shower with a thermostatic head shower. Both bedrooms come with a double bed.

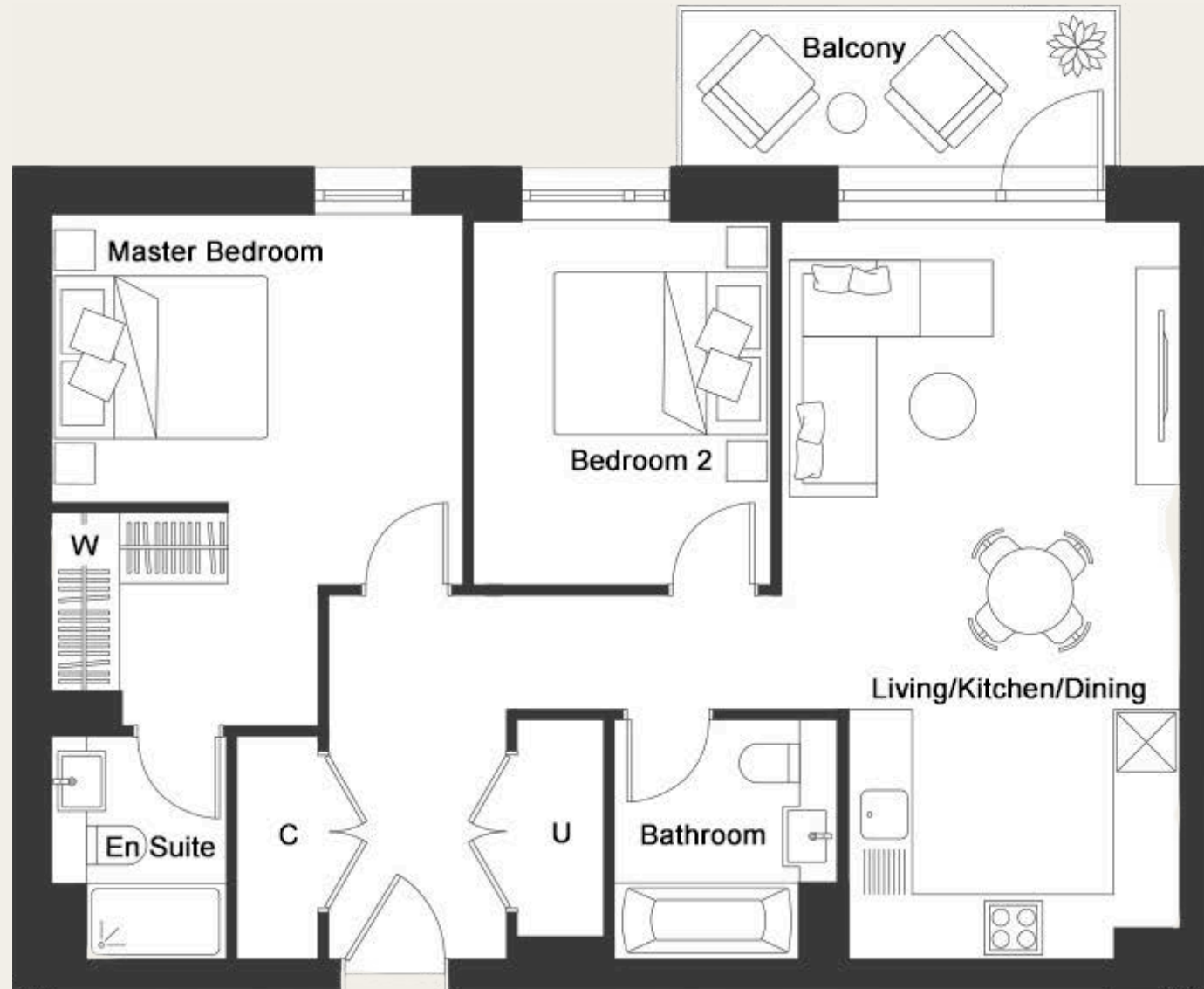
***5.5% Estimated rental yield.***

***£1,600 Estimated rent achieved***

Floorplans



# C601 Floorplan



## Dimensions

Living/Kitchen/Dining	12' 1" x 22' 5"	3.68m x 6.82m
Master Bedroom	15' 6" x 12' 5"	4.75m x 3.82m
Bedroom 2	9' 0" x 11' 0"	2.75m x 3.35m
Balcony	64.5 sq.ft	6 sq.m
Total Area	769.2 sq.ft	71.5 sq.m





## *Apartment A007*

*£355,000*

**A 2 bedroom, 2 bathroom 757 sq. ft apartment located on the ground floor of The Colmore. Featuring a terrace with views of the private gardens.**

The thoughtfully designed home benefits from high-specification interior finishes and a terrace measuring 186 sqft, which enjoys views out on to the private resident gardens.

The apartment features a spacious open plan kitchen, living and dining area, with large windows, which allow natural light to fill the home. The contemporary designed kitchen includes a full range of integrated appliances, including a Bosch induction hob and oven.

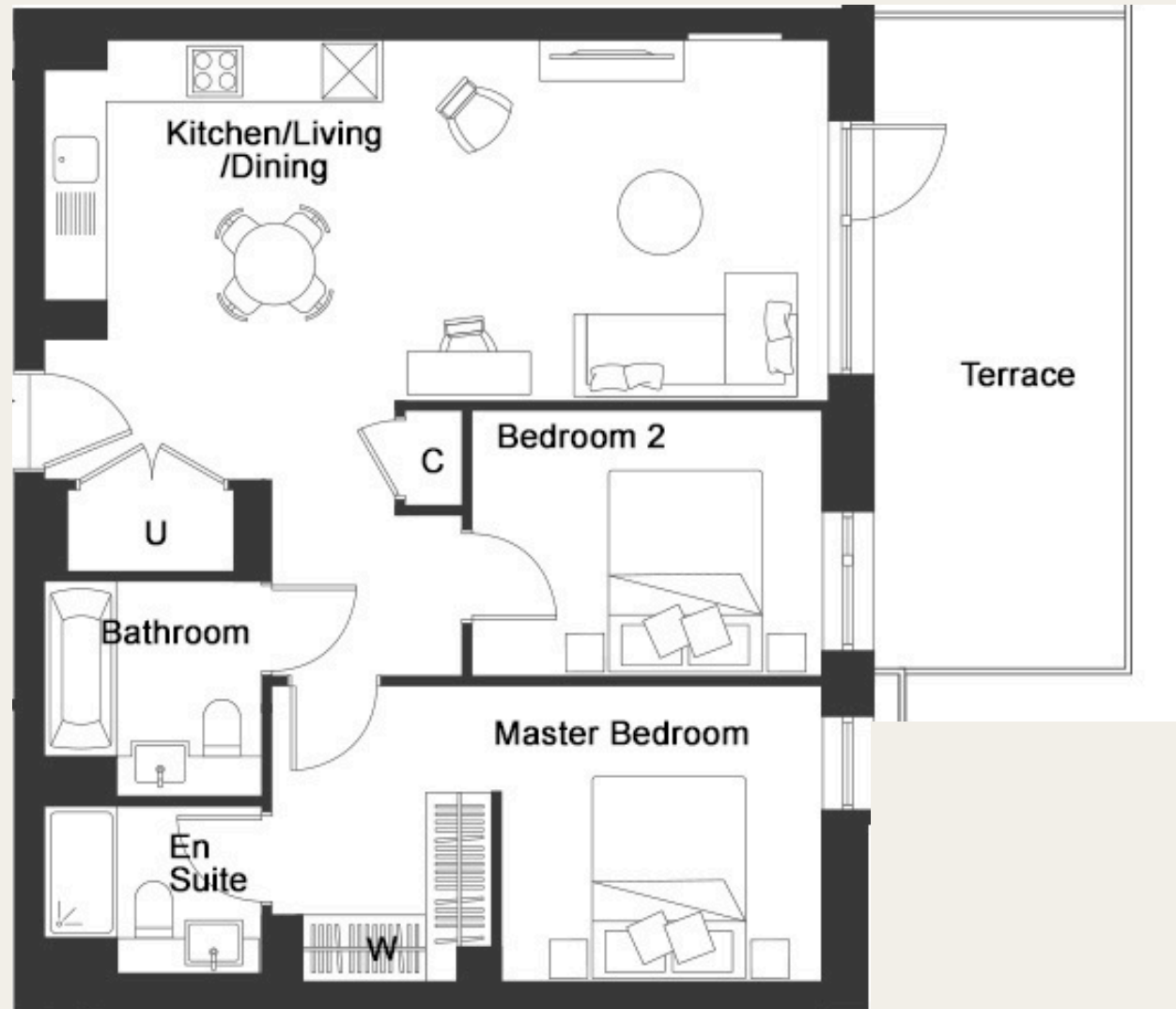
The principle bedroom includes extensive fitted wardrobes and has a private ensuite, which includes a walk-in shower with a thermostatic head shower.

***5.9% Estimated rental yield.***

Floorplans



# A007 Floorplan



## Dimensions

Kitchen/Living/Dining	25' 0" x 14' 1"	7.62m x 4.30m
Master Bedroom	10' 6" x 9' 6"	3.19m x 2.90m
Bedroom 2	11' 3" x 8' 6"	3.44m x 2.60m
Terrace	167.9 sq.ft	15.6 sq.m
Total Area	756.8 sq.ft	70.3 sq.m



# *Apartment A207*

*£360,000*

**A 2 bedroom, 2 bathroom 756 sq. ft apartment located on the second floor of The Colmore.**

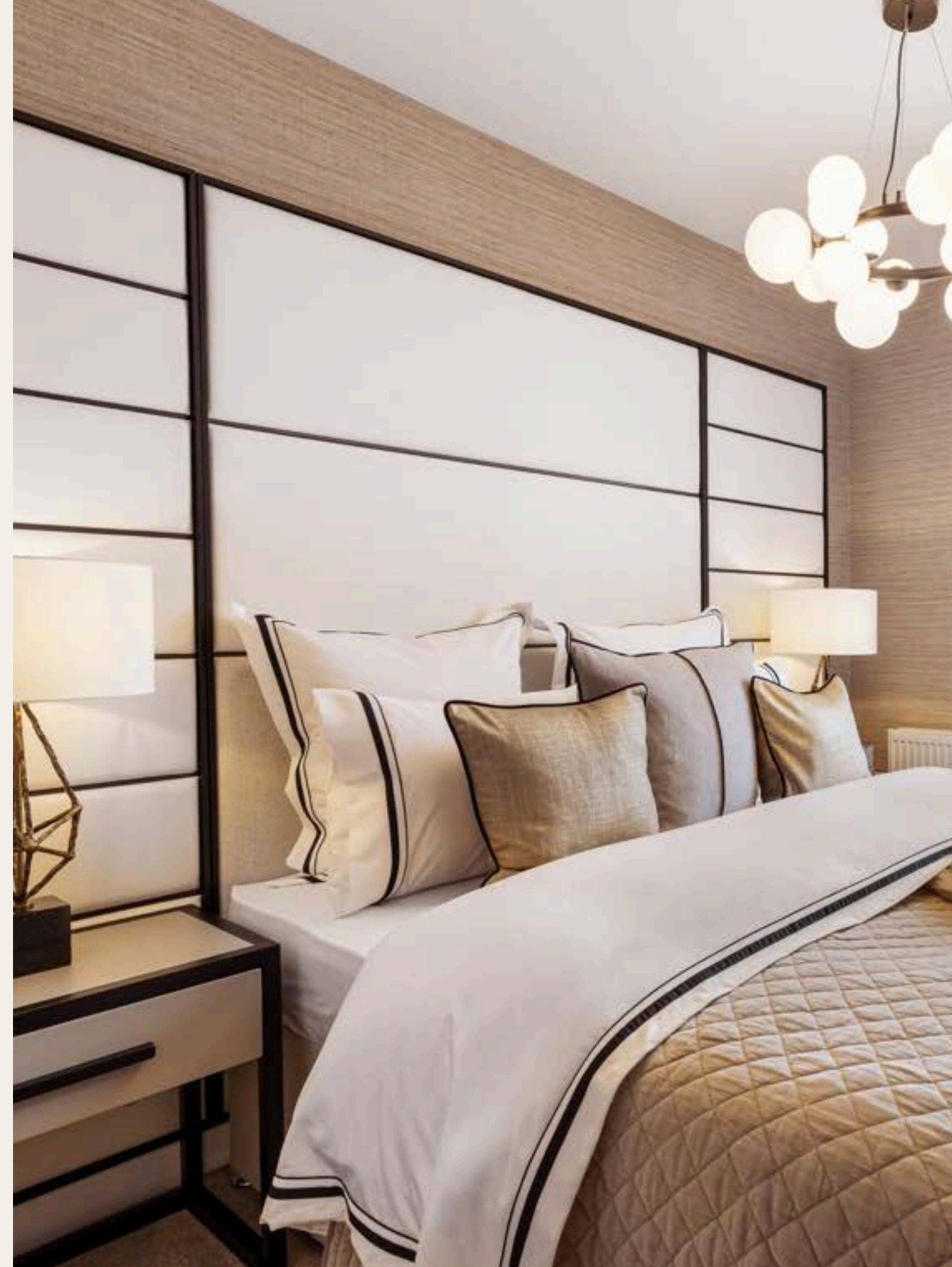
The thoughtfully designed home benefits from high-specification interior finishes and a balcony measuring 60 sqft, which enjoys views out on to the private gardens.

The apartment features a spacious open plan kitchen, living and dining area, with large windows, which allow natural light to fill the home. The contemporary designed kitchen includes a full range of integrated appliances, including a Bosch induction hob and oven.

The principle bedroom includes extensive fitted wardrobes and has a private ensuite, which includes a walk-in shower with a thermostatic head shower.

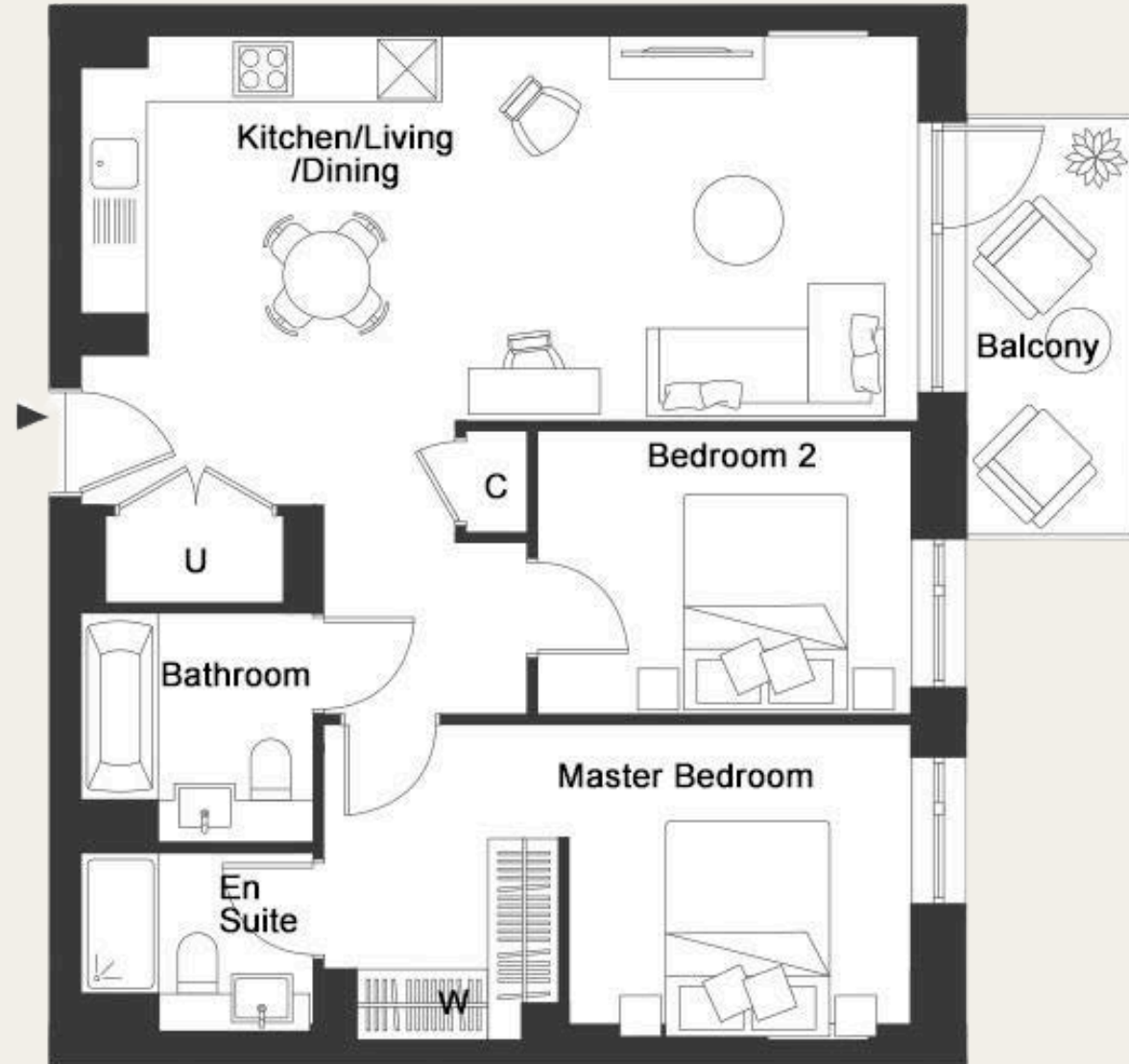
***5.5% Estimated rental yield.***

Floorplans





# A207 Floorplan



## Dimensions

Kitchen/Living/Dining	25' 0" x 14' 1"	7.62m x 4.30m
Master Bedroom	10' 6" x 9' 6"	3.19m x 2.90m
Bedroom 2	11' 3" x 8' 6"	3.44m x 2.60m
Balcony	60.2 sq.ft	5.6 sq.m
Total Area	756.4 sq.ft	70.3 sq.m





## *Apartment A106*

*£360,000*

**A 2 bedroom, 2 bathroom 756 sq. ft apartment located on the first floor of The Colmore.**

The thoughtfully designed home benefits from high-specification interior finishes and a balcony measuring 60 sqft, which enjoys views out on to the private gardens.

The apartment features a spacious open plan kitchen, living and dining area, with large windows, which allow natural light to fill the home. The contemporary designed kitchen includes a full range of integrated appliances, including a Bosch induction hob and oven.

The principle bedroom includes extensive fitted wardrobes and has a private ensuite, which includes a walk-in shower with a thermostatic head shower.

***5.5% Estimated rental yield.***

Floorplans

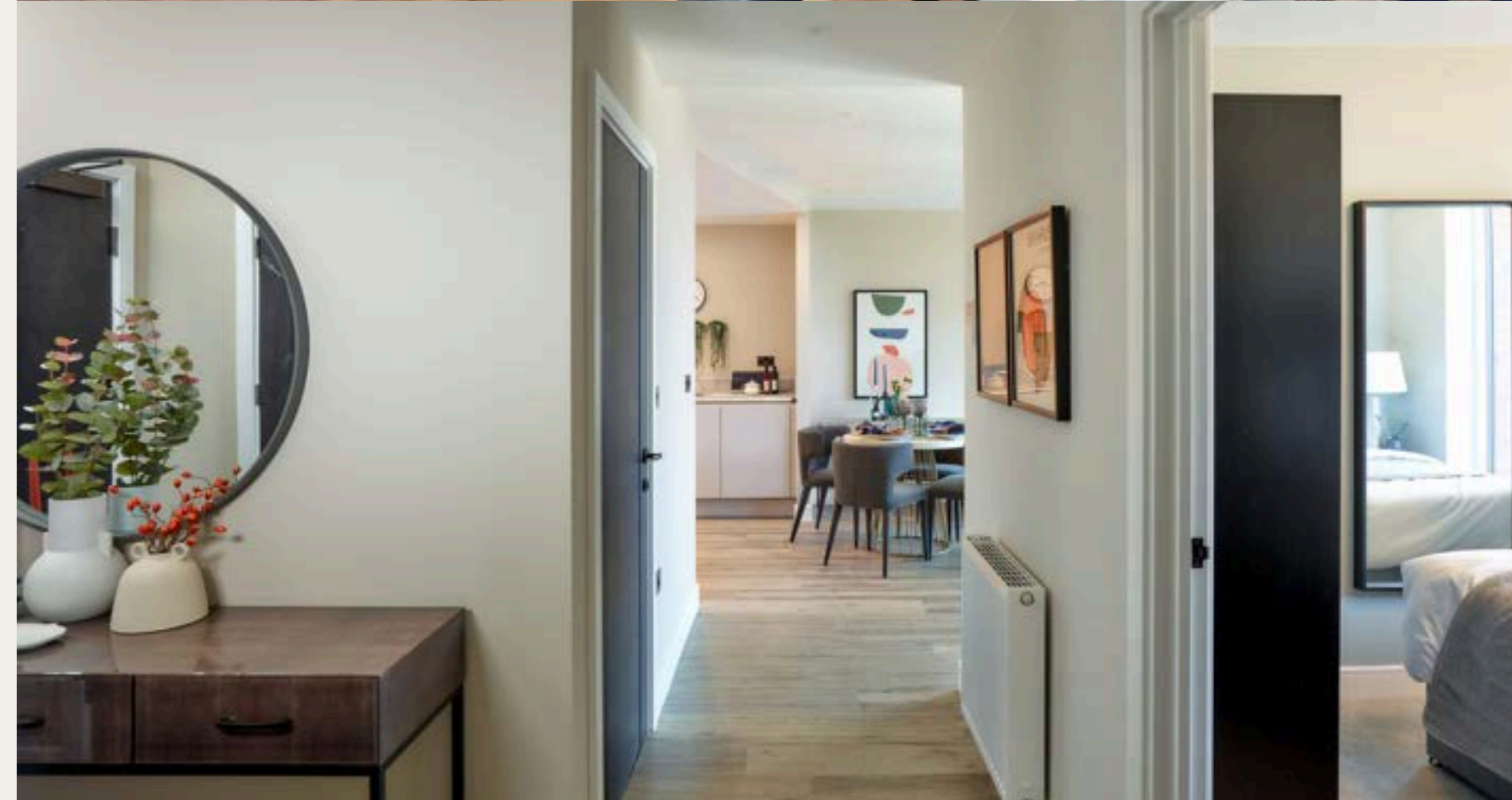


# A106 Floorplan



## Dimensions

Kitchen/Living/Dining	25' 0" x 14' 1"	7.62m x 4.30m
Master Bedroom	10' 6" x 9' 6"	3.19m x 2.90m
Bedroom 2	11' 3" x 8' 6"	3.44m x 2.60m
Balcony	60.2 sq.ft	5.6 sq.m
Total Area	756.4 sq.ft	70.3 sq.m



# Apartment A407

£370,000

**A 2 bedroom, 2 bathroom 756 sq. ft apartment located on the fourth floor of The Colmore.**

The thoughtfully designed home benefits from high-specification interior finishes and a balcony measuring 60 sqft, which enjoys views out on to the private gardens.

The apartment features a spacious open plan kitchen, living and dining area, with large windows, which allow natural light to fill the home. The contemporary designed kitchen includes a full range of integrated appliances, including a Bosch induction hob and oven.

The principle bedroom includes extensive fitted wardrobes and has a private ensuite, which includes a walk-in shower with a thermostatic head shower.

**5.3% Estimated rental yield.**

Floorplans





## A407 Floorplan



### Dimensions

Kitchen/Living/Dining	25' 0" x 14' 1"	7.62m x 4.30m
Master Bedroom	10' 6" x 9' 6"	3.19m x 2.90m
Bedroom 2	11' 3" x 8' 6"	3.44m x 2.60m
Balcony	60.2 sq.ft	5.6 sq.m
Total Area	756.4 sq.ft	70.3 sq.m

# *Apartment A107*

*£370,000*

**A 2 bedroom, 2 bathroom 756 sq. ft apartment located on the first floor of The Colmore. A107 is being sold with all furniture and interiors.**

The thoughtfully designed home benefits from high-specification interior finishes and a balcony measuring 60 sqft, which enjoys views out on to the private gardens. This home is being sold fully furnished with luxury interiors.

The apartment features a spacious open plan kitchen, living and dining area, with large windows, which allow natural light to fill the home. The contemporary designed kitchen includes a full range of integrated appliances, including a Bosch induction hob and oven.

The principle bedroom includes extensive fitted wardrobes and has a private ensuite, which includes a walk-in shower with a thermostatic head shower.

***5.6% Estimated rental yield.***

Floorplans



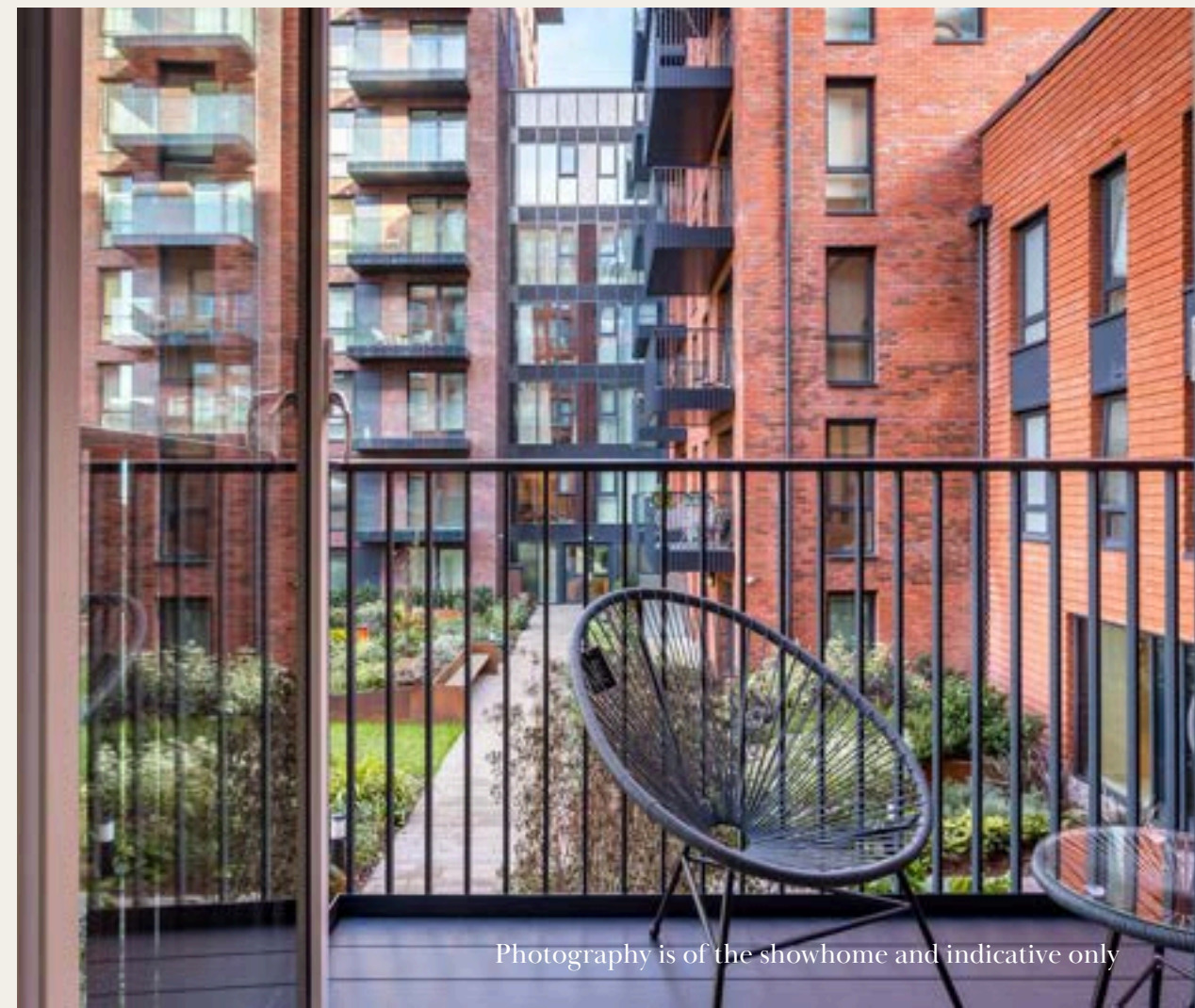


## A107 Floorplan



### Dimensions

Kitchen/Living/Dining	25' 0" x 14' 1"	7.62m x 4.30m
Master Bedroom	10' 6" x 9' 6"	3.19m x 2.90m
Bedroom 2	11' 3" x 8' 6"	3.44m x 2.60m
Balcony	60.2 sq.ft	5.6 sq.m
Total Area	756.4 sq.ft	70.3 sq.m



Photography is of the showhome and indicative only



# Apartment A104

£425,000

**A 2 bedroom, 2 bathroom 899 sq. ft apartment located on the first floor of The Colmore. A104 is being sold with all furniture and interiors.**

The luxury designed home benefits from high-specification interior finishes and a **60 sq ft balcony**, which enjoys views out on to the canal and private gardens. This home, designed by renowned interior designers Killer5, is being sold fully furnished with luxurious interiors.

The apartment features a spacious open plan kitchen, living and dining area, with large windows, which allow natural light to fill the home. The contemporary designed kitchen includes a full range of integrated appliances, including a Bosch induction hob and oven.

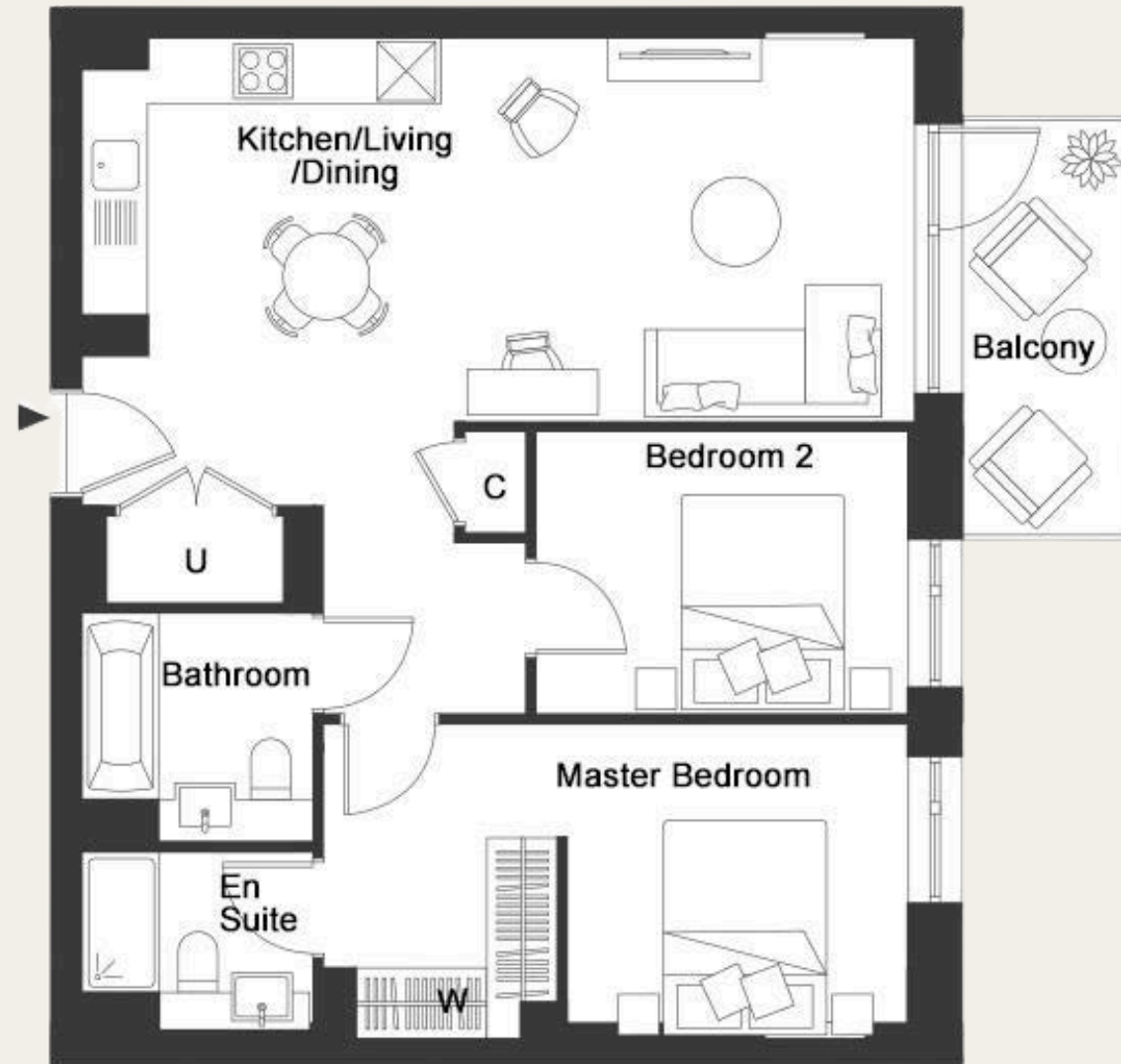
The principle bedroom includes extensive fitted wardrobes and has a private ensuite, which includes a walk-in shower with a thermostatic head shower.

**5.6% Estimated rental yield.**

Floorplans

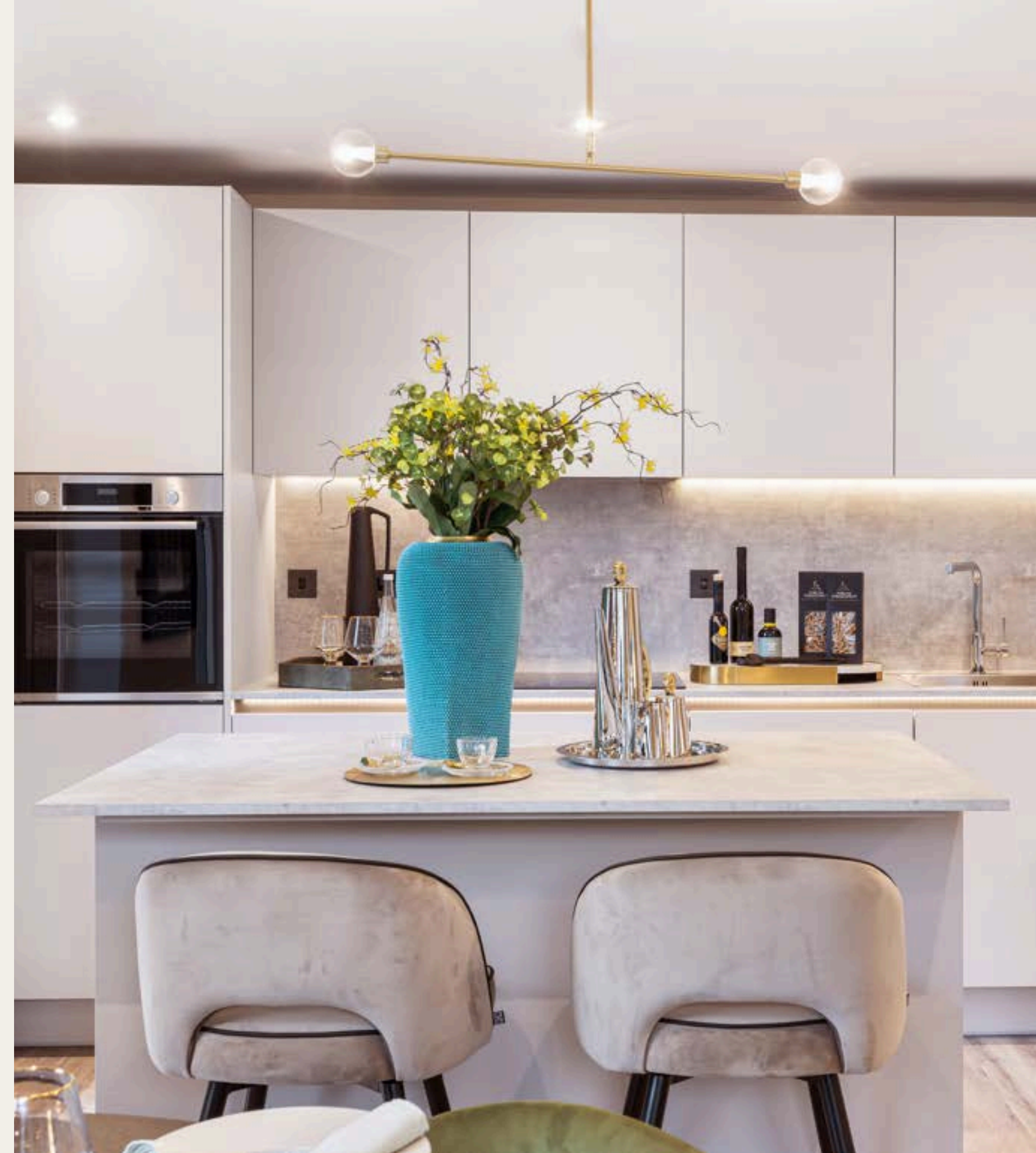


# A104 Floorplan



## Dimensions

Kitchen/Living/Dining	25' 0" x 14' 1"	7.62m x 4.30m
Master Bedroom	10' 6" x 9' 6"	3.19m x 2.90m
Bedroom 2	11' 3" x 8' 6"	3.44m x 2.60m
Balcony	60.2 sq.ft	5.6 sq.m
Total Area	756.4 sq.ft	70.3 sq.m



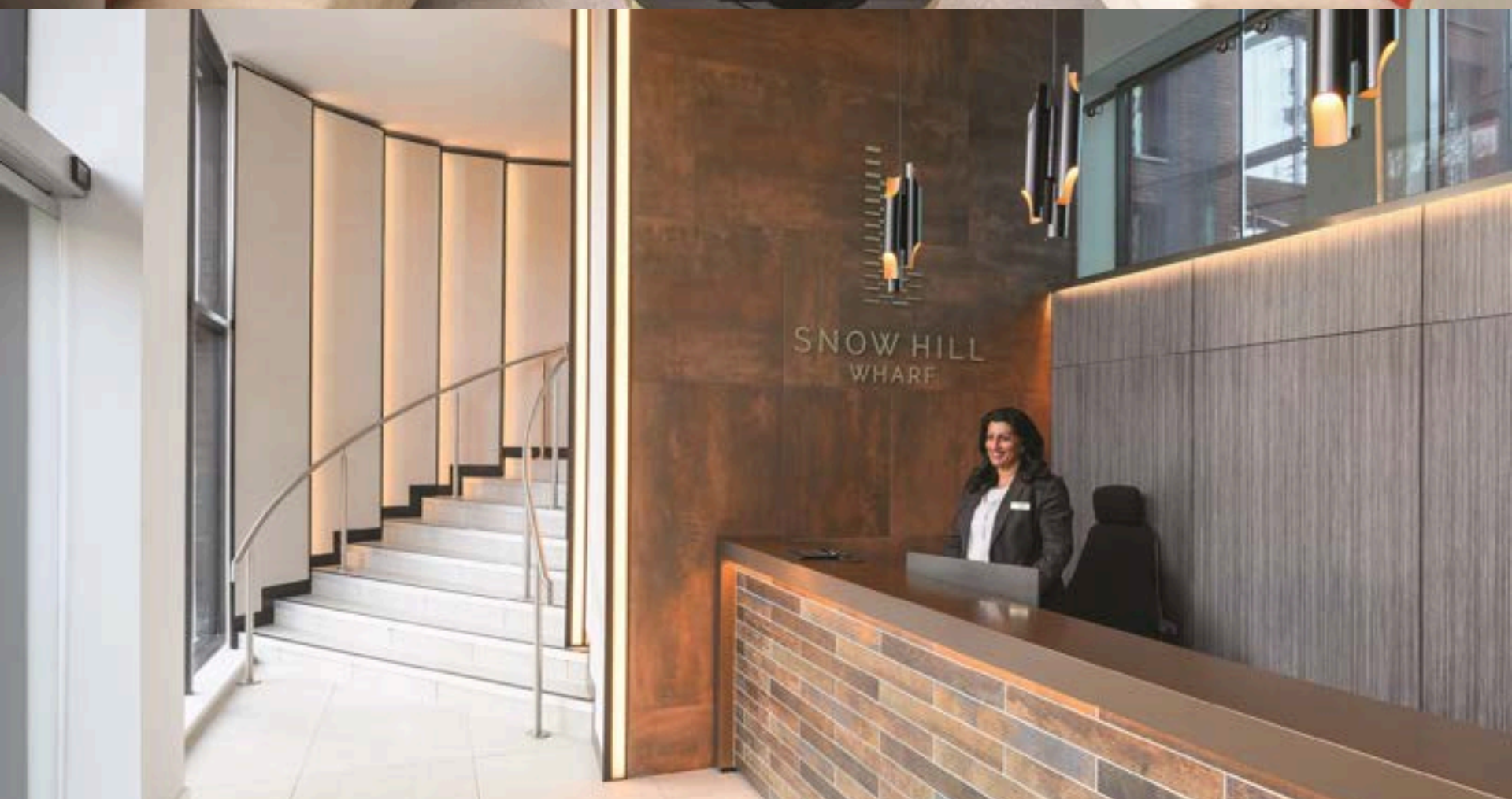




## *Resident Facilities*

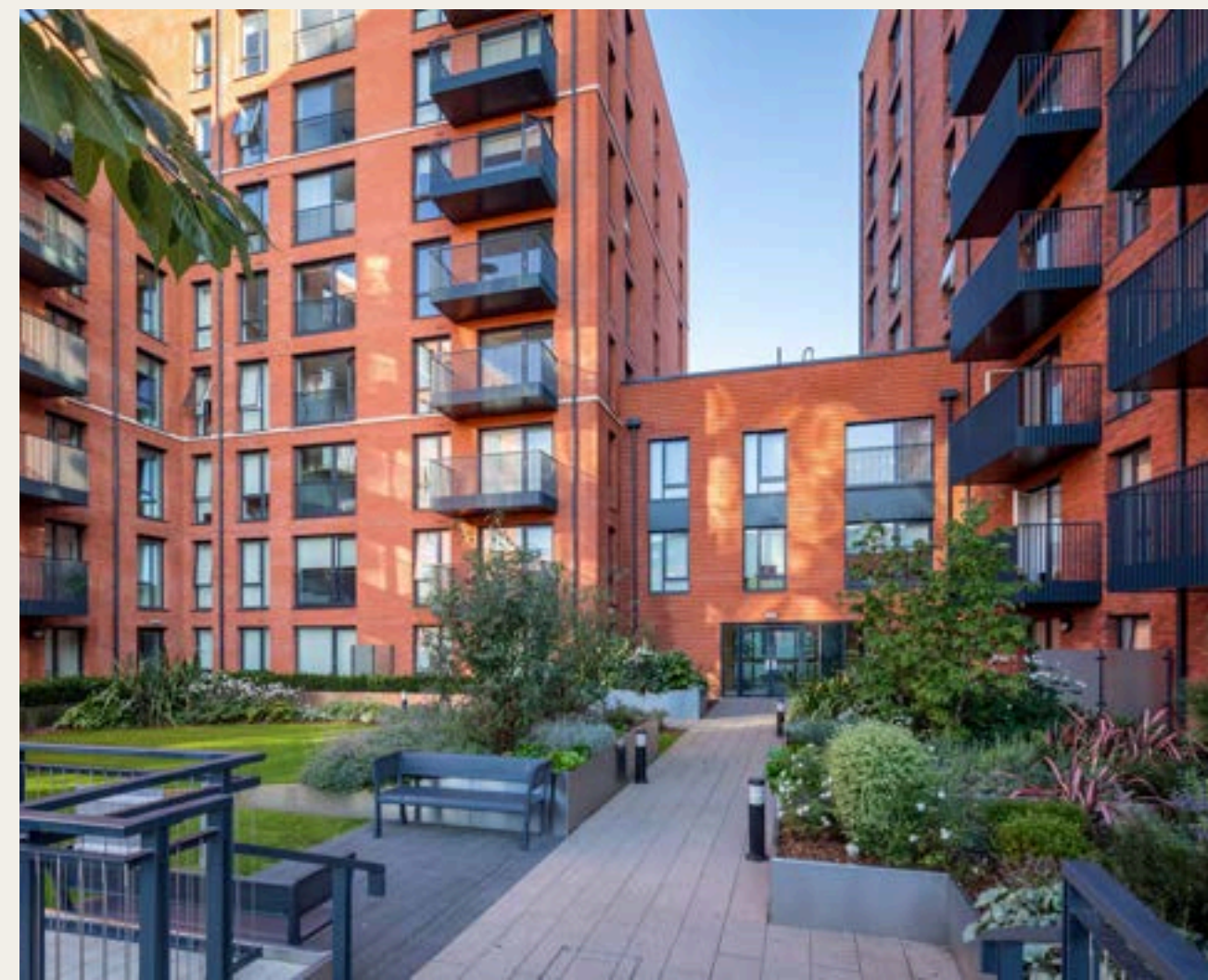
Residents of Snow Hill Wharf can enjoy exclusive facilities. This includes:

- Residents lounge
- 24 Hour concierge
- Gym
- Sauna & steam room
- Cinema room
- Private gardens
- Meeting rooms



See Facilities







SNOW HILL  
WHARF

BIRMINGHAM

*Get in touch*

0121 667 2966

[snowhillwharf.co.uk](http://snowhillwharf.co.uk)

[Snowhillwharf@stjosephhomes.co.uk](mailto:Snowhillwharf@stjosephhomes.co.uk)

**St Joseph**  
Designed for life

**Berkeley**  
Designed for life