

SILKSTREAM

LONDON NW9

THE SILK
CLUB.



St George
Designed for life



WELCOME TO SILKSTREAM.

Computer generated imagery is indicative only and subject to change.

Silkstream's 9-acre site features a 1.5-acre public park and a 175-metre oxbow lake. Running around the perimeter of the development is the Silk Stream, the inspiration for its name.

The three elevated landscaped gardens: Mosaic, Meadow and Woodland have all been designed to enhance biodiversity and offer residents different outlooks and spaces to meet friends, relax or just enjoy the views across the City.

This is a place for those who want to enjoy the best of both worlds. Where tranquility and proximity go hand in hand, and where you can be transported from a peaceful garden to the vibrant hub of King's Cross and the heart of London in just 19-minutes*.

*Travel times are approximate only. Source: tfl.gov.uk.



London living of a different nature



FEELING GOOD COMES NATURALLY.

From a sunrise yoga class to a sunset stroll, or a workout in the state-of-the-art gym; Silkstream offers a lifestyle where the best of the city is balanced with the wellbeing benefits of nature.

Lifestyle imagery is indicative only.

CONCIERGE, RESIDENTS' LOUNGE, CO-WORKING AREA & TERRACE.



Concierge

Silkstream's concierge and residents' lounge reflects today's modern way of living with flexible spaces, offering a sociable and welcome addition to your home.

Co-Working Area

The co-working area includes meeting spaces, video teleconferencing booths, coffee and drinks station, and an outdoor terrace overlooking the 1.5-acre park.





KIELDER HOUSE

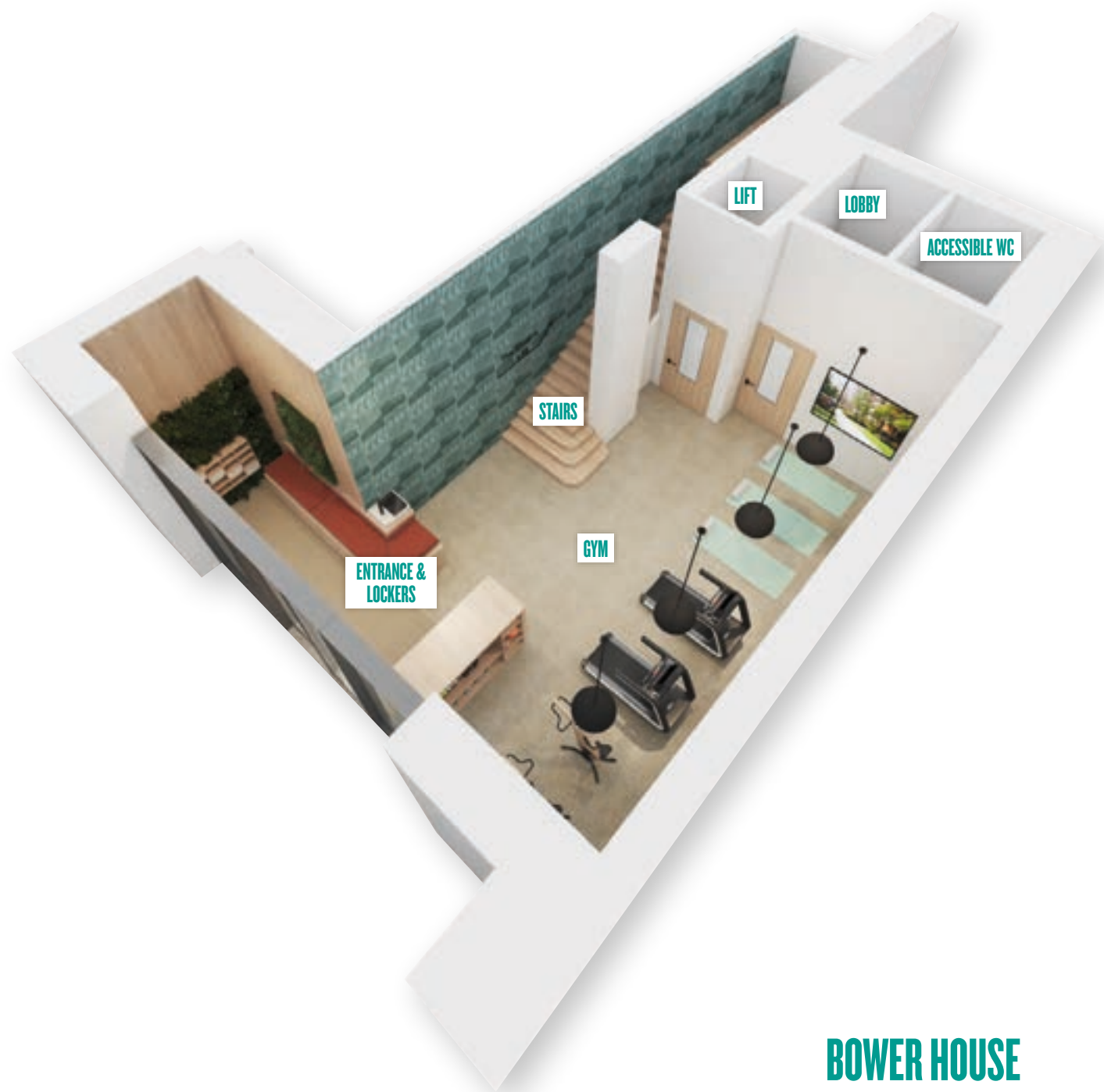
DUPLE STREET



GYM.

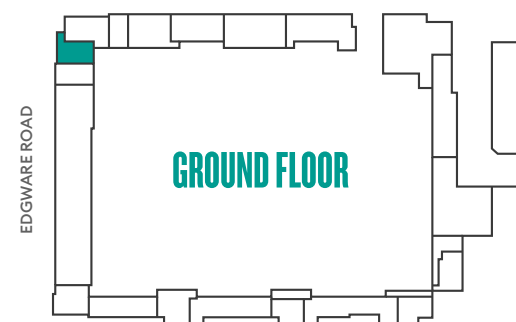
Workout in Silkstream's private gym and fitness facilities, designed to connect the interior space with nature outside. The minimalistic style gym features contemporary equipment, natural materials and mirrors that reflect the light.



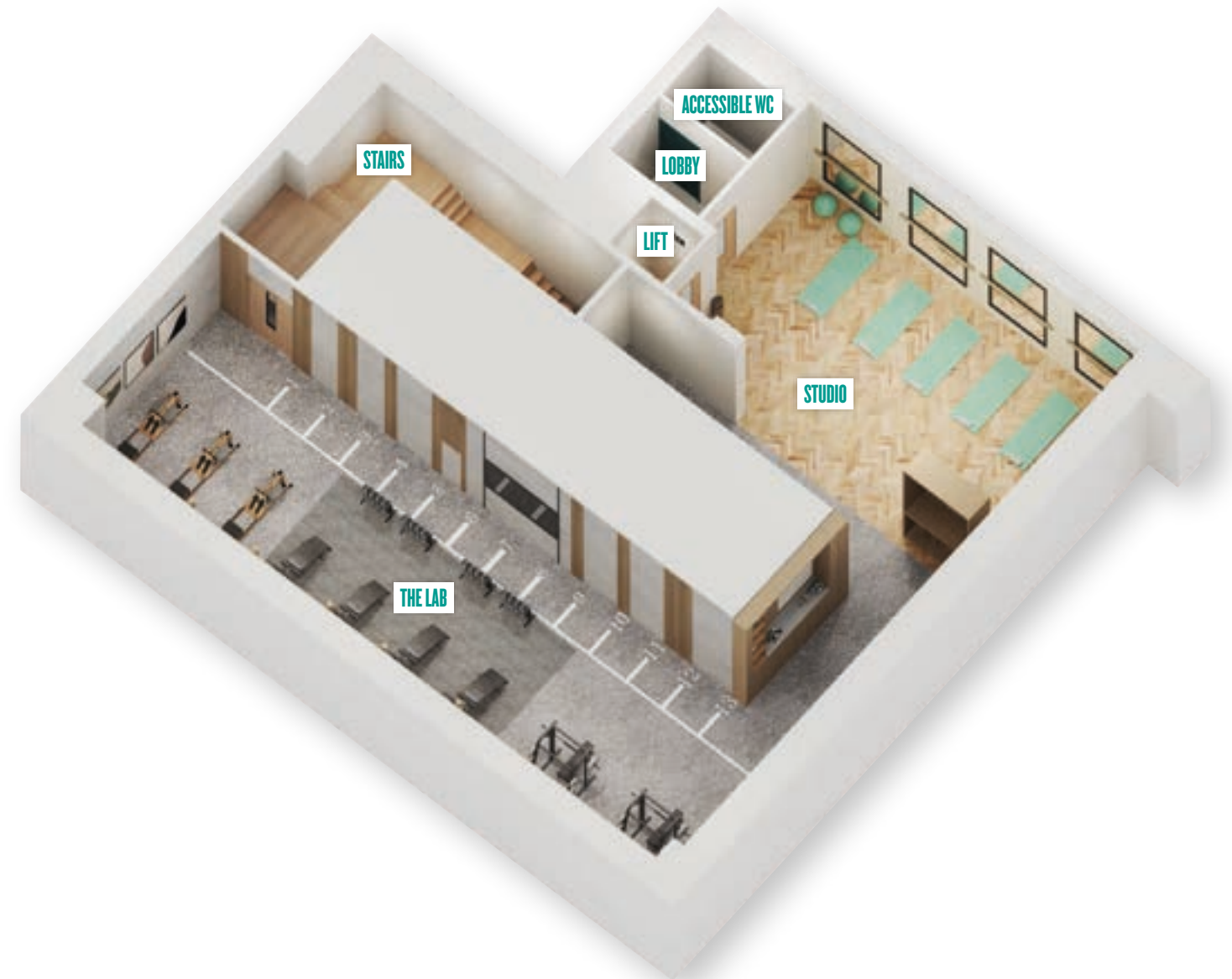


BOWER HOUSE

DUPLE STREET

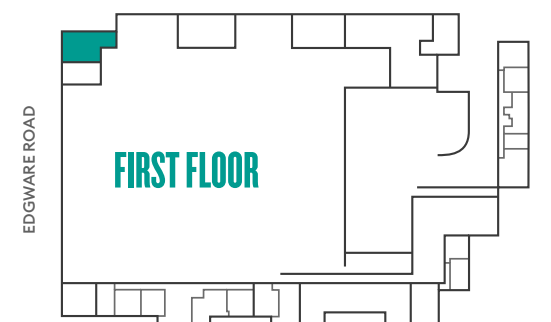


GROUND FLOOR



BOWER HOUSE

DUPLE STREET



FIRST FLOOR

SCREENING ROOM.

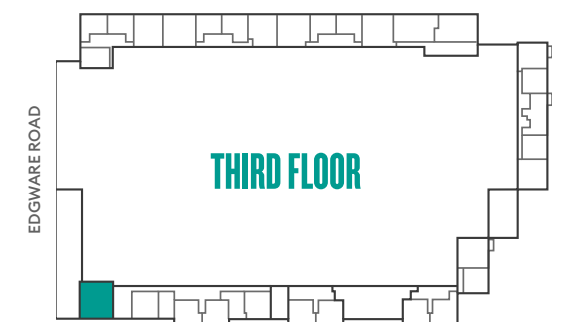
Host a movie night in one of the two private screening rooms.





LINDLEY HOUSE

DUPLE STREET



MOSAIC GARDEN.

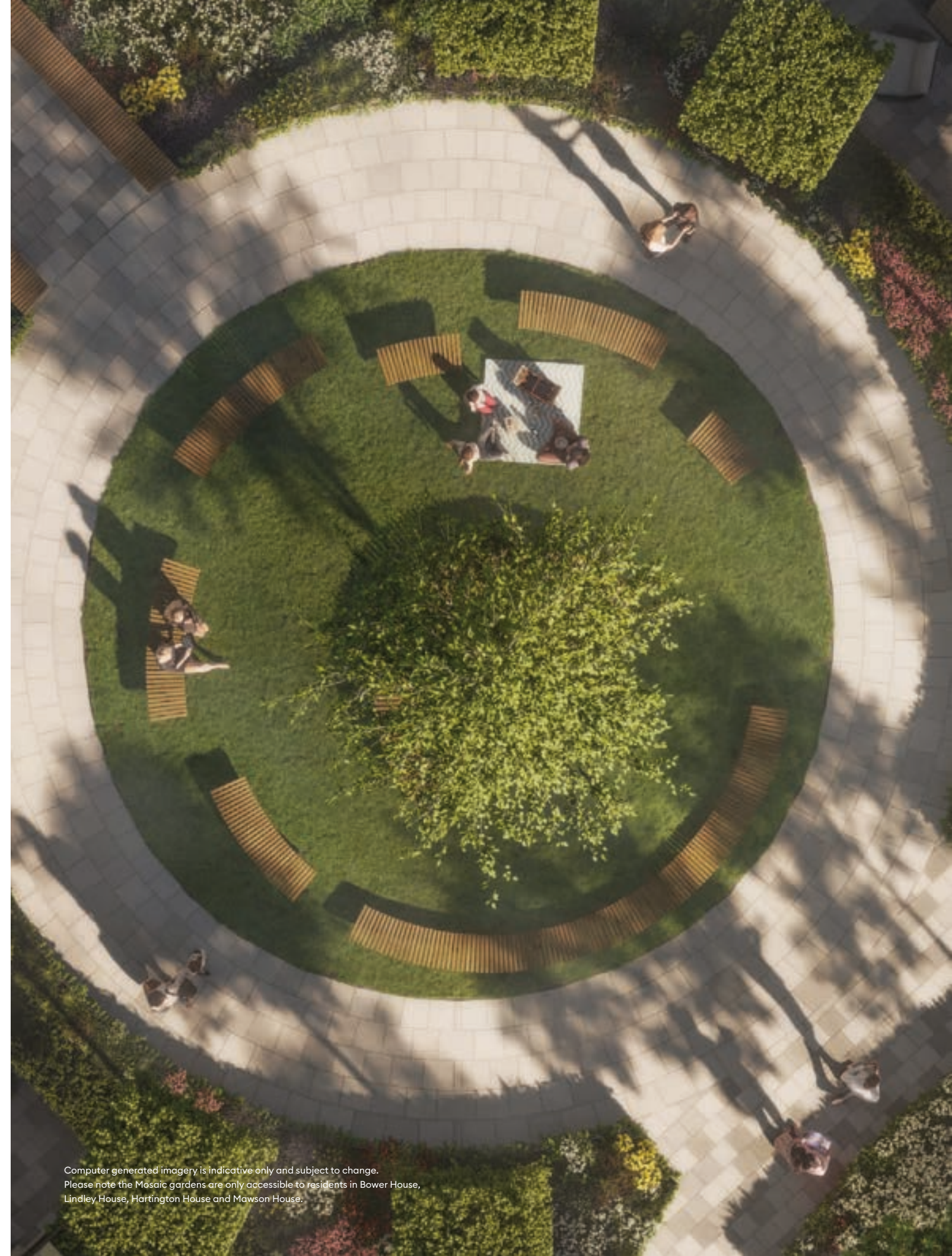
The homes at Silkstream are adjacent to private podium gardens, each inspired by the landscapes and heritage that define the rich natural tapestry of Britain.

Illustration is indicative only and subject to change. Please note the Mosaic gardens are only accessible to residents in Bower House, Lindley House, Hartington House and Mawson House.

Donner

DEFINITION:

Mosaic gardens are typically characterised by a mix of habitat types such as flower rich meadows, short, patchy grassland, scrub and wet areas. The individual component habitats may not be notable in their own right, however, in combination they can create areas of high value for biodiversity.



Computer generated imagery is indicative only and subject to change.
Please note the Mosaic gardens are only accessible to residents in Bower House,
Lindley House, Hartington House and Mawson House.

WOODLAND GARDEN.



Illustration is indicative only and subject to change. Please note the Woodland gardens are only accessible to residents in Paxton House, Henslow House, Broadheath House and Kielder House.

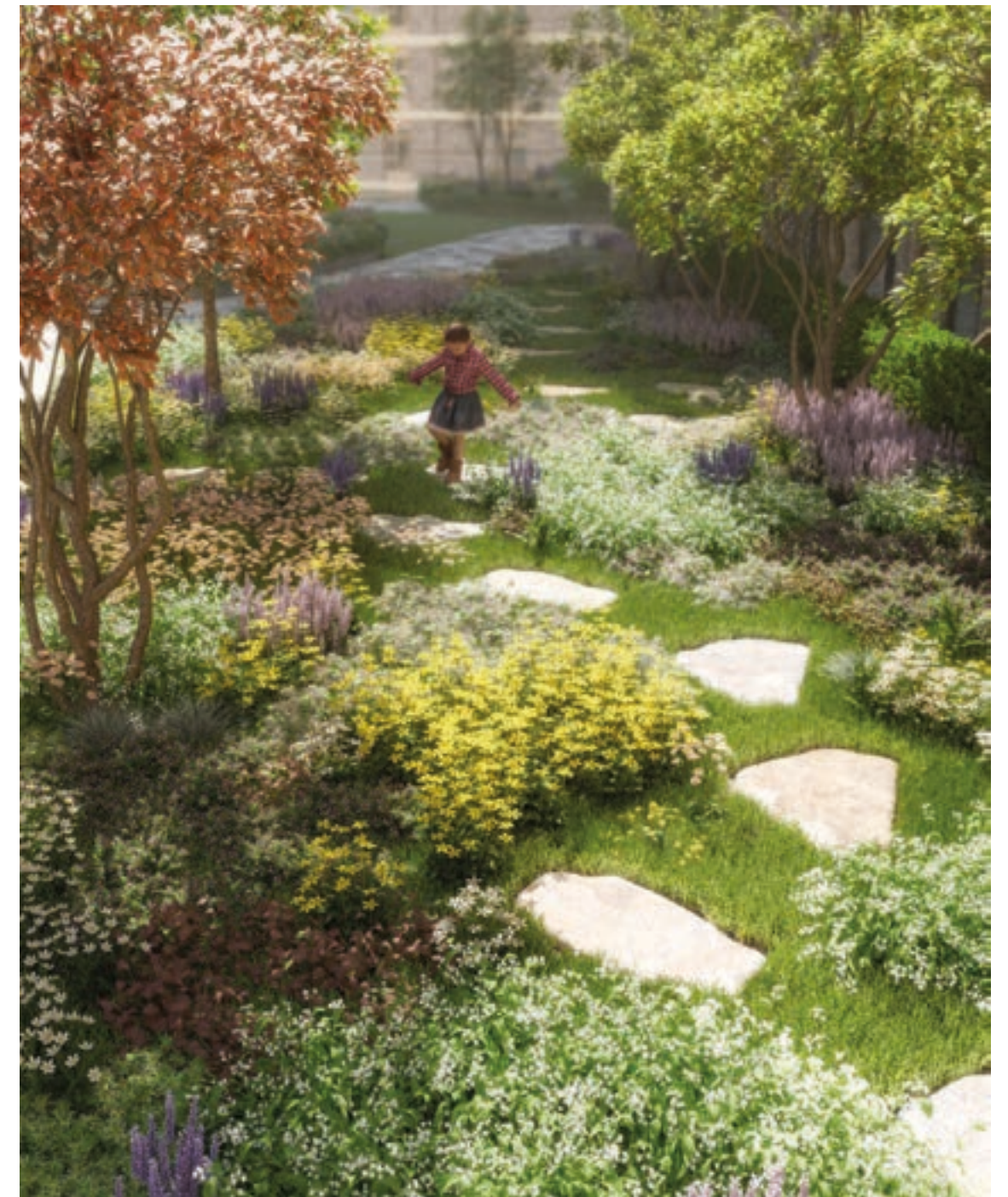
40/01/13

DEFINITION:

A woodland is land covered with trees; a low-density forest forming open habitats with plenty of sunlight and limited shade. Woodlands also support an understory of shrubs and herbaceous plants including grasses.



Computed generated imagery is indicative only and subject to change.
Please note the Woodland gardens are only accessible to residents in
Paxton House, Henslow House, Broadheath House and Kielder House.



MEADOW GARDEN.



Illustration is indicative only and subject to change. Please note the Meadow gardens are only accessible to residents in Hartington House, Mawson House, Paxton House and Henslow House.

HPM

DEFINITION:

A meadow is an open habitat, or field, vegetated by grasses, herbs, and other non-woody plants that attract a multitude of wildlife, and support flora and fauna that could not thrive in other habitats.



Computer generated imagery is indicative only and subject to change.
Please note the Meadow gardens are only accessible to residents in
Hartington House, Mawson House, Paxton House and Henslow House.

WHAT'S IN STORE.

Silkstream's state-of-the-art Sainsbury's supermarket will offer an improved product and service that puts high quality, great value food at its heart; bringing the very best in customer choice to residents and the local community.

The flagship 43,000 sq ft store will open in 2024 and will showcase Sainsbury's very latest thinking in terms of look, feel and format. Features will include Sainsbury's Fresh Food Market with an extensive range of fresh food, fruit and veg and food-to-go*. There will be an in store bakery where bread and pastries will be baked every day*. The supermarket will also include Sainsbury's iconic Habitat range selling modern classics for the home, as well as Tu clothing, stylish beauty aisles and an in store Argos; giving customers a department store shopping experience*.

Sainsbury's

habitat[®]



Computer generated imagery is indicative only and subject to change. *Concessions may be subject to change.

WWW.SILKSTREAMNW9.CO.UK

CONTACT US.

Sales & Marketing Suite

4 The Hyde, London, NW9 6FZ

Monday to Saturday: 10am – 6pm

Sunday: 10am – 5pm

020 3728 8833

silkstreamnw9.co.uk

sales@silkstreamlondon.co.uk



OUR VISION
2030
TRANSFORMING TOMORROW



St George
Designed for life

The information in this document is indicative and is intended to act as a guide only as to the finished product. Accordingly, due to St George's policy of continuous improvement, the finished product may vary from the information provided. These particulars should not be relied upon as statements of fact or representations and applicants must satisfy themselves by inspection or otherwise as to their correctness. This information does not constitute a contract or warranty. The dimensions given on plans are subject to minor variations and are not intended to be used for carpet sizes, appliance sizes or items of furniture. Silkstream is a marketing name and will not necessarily form part of the approved postal address. Planning Permission number 19/4661/FUL. Granted by Barnet Council. Purchasers are acquiring an apartment with a new 996 year leasehold from May 2021. Like any investment, purchasing uncompleted properties situated outside Hong Kong is complicated and contains risk. You should review all relevant information and documents carefully before making a purchase decision. If in doubt, please seek independent professional advice before making a purchase decision. H061/41CA/12/23.