

# SILKSTREAM

LONDON NW9

## EDUCATION GUIDE.



St George  
Designed for life



# LEARNING EXCELLENCE.

Silkstream's location in West Hendon offers a wide choice of educational opportunities for every age, aptitude, faith and interest.

The Borough of Barnet is notably home to 48 Ofsted 'Outstanding' schools including the highly-rated Queen Elizabeth's Grammar School, praised for achieving a record-breaking 62 Oxbridge offers in the 2024 school year.\*

When it comes to the next stage, Silkstream is perfect for students and young professionals with direct transport links that take you to the UK's top-ranked universities like UCL, LSE and Imperial College in less than 30 minutes.

All of which means Silkstream residents can feel confident that they are making the right decision for their child's education and individual needs.

\*Source: Snobe, 2024. Queen Elizabeth's Grammar School, 2024. Travel times are approximate only. Source: Google Maps.



PRE-SCHOOLS

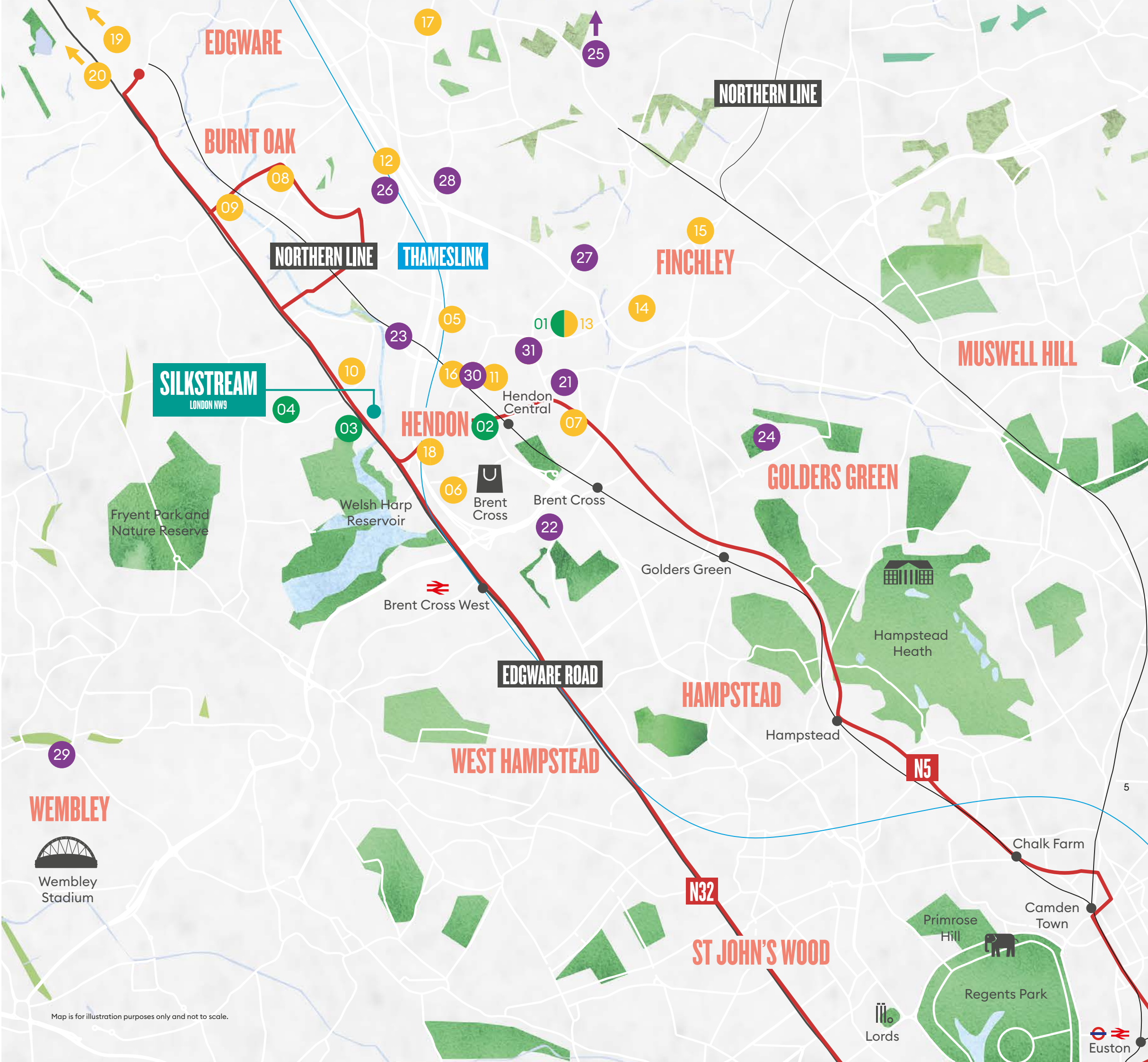
- 01 Hendon Prep School
- 02 Bright Horizons Hendon Day Nursery and Pre-School
- 03 The Hyde School
- 04 Oliver Goldsmith School

PRIMARY SCHOOLS

- 05 Sunnyfields Primary and Pre-school
- 06 Parkfield Primary School
- 07 Hasmorean Primary School
- 08 Goldbeaters Primary School
- 09 Barnfield Primary School
- 10 Colindale Primary School
- 11 St Mary's and St John's CE School
- 12 The Orion Primary School
- 13 Hendon Prep School
- 14 Chalgrove Primary School
- 15 Pardes House Primary School
- 16 St Joseph's RC Primary School
- 17 Goodwyn School
- 18 Barnet Hill Academy
- 19 Haberdashers' Aske's Girls School
- 20 Haberdashers' Aske's Boys School

SECONDARY SCHOOLS

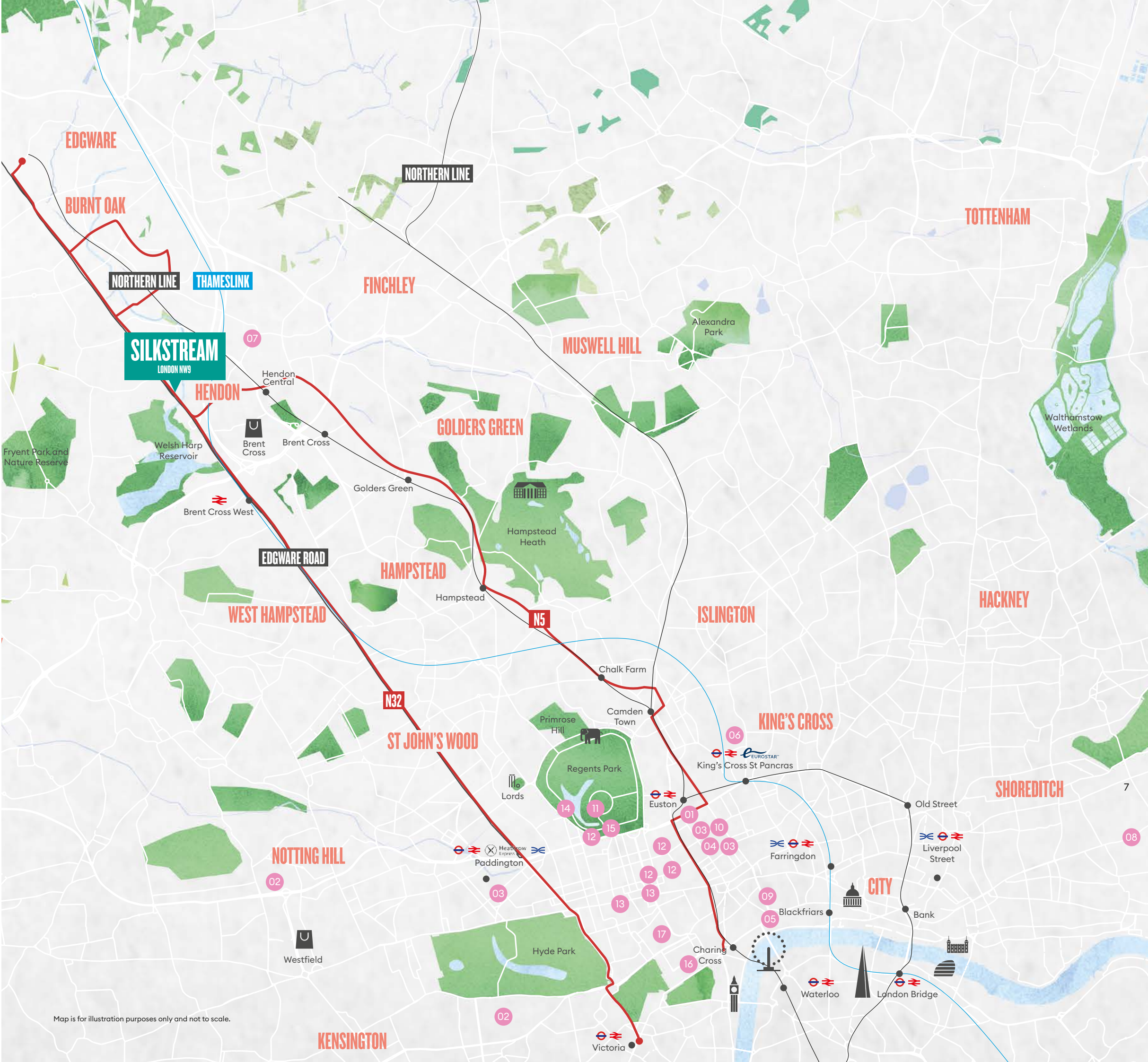
- 21 Hendon School
- 22 Whitefield School
- 23 North London Grammar School
- 24 Henrietta Barnett School
- 25 Queen Elizabeth's School
- 26 Saracens High School
- 27 Hasmorean High School for Boys
- 28 Hasmorean High School for Girls
- 29 Harrow School
- 30 London Brookes College
- 31 Brampton College





UNIVERSITIES AND COLLEGES

- 01 University College London
- 02 Imperial College London
- 03 University of London
- 04 Birkbeck University
- 05 King's College London
- 06 London College of Fashion, Central Saint Martins
- 07 Middlesex University
- 08 Queen Mary University of London
- 09 London School of Economics
- 10 SOAS University of London
- 11 Regent's University London
- 12 University of Westminster
- 13 University of the Arts London
- 14 London Business School
- 15 Royal Academy of Music
- 16 Royal Academy of Engineering
- 17 Royal Academy of Arts





# PRE-SCHOOL

## STARTING OUT.

The right environment where a child can grow and thrive is essential at the beginning of their education journey. Welcoming nurseries and pre-schools with good Ofsted ratings, are conveniently located nearby.

## HENDON PREP SCHOOL

20 Tenterden Grove,  
London NW4 1TD

- Girls and boys
- Ages: 3 – 4 years
- Ofsted Rating: Good

### Overview

Hendon Prep is an outstanding private pre-school with a curriculum based around Early Years Foundation Stage (EYFS) plus framework with a dynamic timetable of activities including Music, French, Tennis and P.E. delivered by specialist subject teachers.

[hendonprep.co.uk](https://hendonprep.co.uk)

2.2 miles away

## THE HYDE SCHOOL

Hyde Crescent, London NW9 7EY

- Girls and boys
- Ages: 3 – 11 years
- Ofsted Rating: Outstanding

### Overview

The Hyde School is a large primary school that proudly promotes spiritual, moral, social and cultural development and teaches a unique Urban Adventure curriculum. The curriculum which has been designed especially for children to make the most of the opportunities available within the local and wider area.

[thehydeschool.co.uk](https://thehydeschool.co.uk)

0.3 miles away

## BRIGHT HORIZONS HENDON DAY NURSERY AND PRE-SCHOOL

46 Allington Rd, London NW4 3DE

- Girls and boys
- Ages: 3 months – 5 years
- Ofsted Rating: N/A

### Overview

Bright Horizons Day Nursery and Pre-School is an outstanding childcare setting with state-of-the-art equipment to support the education, care and development of children in the early years. The nursery has an adventure garden which includes a water feature, climbing frame, racetrack and soft surface for exploring the outdoors.

[brighthorizons.co.uk](https://brighthorizons.co.uk)

1.5 miles away

## OLIVER GOLDSMITH SCHOOL

Coniston Gardens, Kingsbury,  
London NW9 0BD

- Girls and boys
- Ages: 3 – 11 years
- Ofsted Rating: Good

### Overview

Oliver Goldsmith School pride themselves on inspiring pupils to be lifelong learners, always striving to reach their full potential. They believe in a strong community ethos where parents, pupils and staff work together in partnership to provide each child with the very best learning opportunities.

[olivergoldsmith.brent.sch.uk](https://olivergoldsmith.brent.sch.uk)

1 mile away



# PRIMARY SCHOOL

## PRIMARY CHOICE.

With 93 Ofsted ‘Good’ or ‘Outstanding’ primary schools in the Borough of Barnet, Hendon is a popular choice for families.\*

State and independent primary schools all easily accessible from Silkstream, and the safe walking and cycling routes and convenient transport links mean making the right choice is that bit easier.

## SUNNYFIELDS PRIMARY SCHOOL

Hatchcroft, London NW4 4JH

- Girls and boys
- Ages: 3 – 11
- Ofsted Rating: Good

### Overview

Sunnyfields delivers a broad and balanced curriculum offering children exciting opportunities to become actively involved and responsible for their own learning. Results are above the national average for reading, maths and writing at both Key Stages One and Two.

[sunnyfieldsprimary.co.uk](https://sunnyfieldsprimary.co.uk)

1.5 miles away

## PARDES HOUSE PRIMARY SCHOOL

Hendon Lane, London N3 1SA

- Boys
- Ages: 4 – 11
- Ofsted Rating: Good

### Overview

A high-achieving Orthodox Jewish boys’ primary, which teaches a dedicated Jewish studies curriculum alongside the National Curriculum. This dual educational approach ensures that pupils are equipped for a strict Torah-observant life as well as excelling in the world. To accommodate the additional curriculum, the school day is longer than other schools.

[pardeshouseprimary.com](https://pardeshouseprimary.com)

3.1 miles away

## GOLDBEATERS PRIMARY SCHOOL

Thirleby Road, Edgware HA8 0HA

- Girls and boys
- Ages: 3 – 11
- Ofsted Rating: Outstanding

### Overview

Goldbeaters Primary School believes that life for its pupils should be rounded and not just a series of lessons. This unique way of learning is called ‘Positive Learning Power’ and involves ensuring that children are happy, successful, positive and confident.

[goldbeaters.org.uk](https://goldbeaters.org.uk)

1.6 miles away

## HASMONEAN PRIMARY SCHOOL PARKFIELD PRIMARY SCHOOL

8-10 Shirehall Lane, London NW4 2PD

- Girls and boys
- Ages: 3 – 11
- Ofsted Rating: Good

### Overview

Hasmonean Primary School is a Jewish school focused on spiritual and academic learning. Pupils here are encouraged to appreciate and value the diversity of backgrounds that make up our multicultural society and to show tolerance towards, and have respect for, other people’s feelings, values and beliefs.

[hasmoneanprimary.co.uk](https://hasmoneanprimary.co.uk)

2.1 miles away

17 St David’s Place, London NW4

- Girls and boys
- Ages: 3 – 11
- Ofsted Rating: Good

### Overview

Parkfield Primary School is a state primary academy that delivers a broad and balanced curriculum that provides a range of learning opportunities. With 67 different languages spoken by staff and pupils it provides a diverse learning experience that celebrates each other’s backgrounds, learnings and traditions.

[parkfieldschool.com](https://parkfieldschool.com)

1.2 miles

## BARNFIELD PRIMARY SCHOOL

Silkstream Road, Edgware HA8 0DA

- Girls and boys
- Ages: 3 – 11
- Ofsted Rating: Good

### Overview

A mixed state primary school with a culture of high aspiration and success for all. The school aims to ensure that the children achieve their full potential whilst enjoying a happy school life.

[barnfieldschool.co.uk](https://barnfieldschool.co.uk)

1.6 miles away

## ST MARY’S AND ST JOHN’S CE SCHOOL

Bennett House, Sunningfields Rd, London NW4 4JU

- Girls and Boys
- Ages 3 – 18
- Ofsted: Good

### Overview

A Catholic all-through school in Hendon, successfully providing high quality education and academic achievement for children and young people from Nursery to Sixth Form. The school is held in high esteem by the local community and alongside academic excellence places a strong emphasis on impeccable manners, articulacy, excellent behaviour, smartness of appearance, hard work and kindness.

[smsj.barnet.sch.uk](https://smsj.barnet.sch.uk)

1.7miles away

## COLINDALE PRIMARY SCHOOL

30 Poolsford Road, London NW9 6DT

- Girls and boys
- Ages 3 – 11
- Ofsted rating: Good

### Overview

Colindale School is a non-denominational community school with a resourced provision for children with physical disabilities. The school has excellent sports facilities including an indoor heated swimming pool, all weather pitch, tennis court and physiotherapy rooms. There is an environmental area with pond, a sensory garden, woodlands and gardening area.

[colindale.barnet.sch.uk](https://colindale.barnet.sch.uk)

0.6 miles away

## THE ORION PRIMARY SCHOOL

Grahame Park Way, London NW7 2AL

- Girls and boys
- Ages: 3 – 11
- Ofsted Rating: Outstanding

### Overview

The Orion Primary is part of the Gold Star Federation (together with Goldbeaters) and is in the top 3% of schools in England. The children are immersed in a positive learning environment. Many features of a normal school are in place however, the ethos of positivity and kindness enable pupils to gain an inner happiness and selfless confidence.

[theorion.org.uk](https://theorion.org.uk)

2.6 miles away

School profile copy sourced from school websites. For further details on schools please visit individual websites. The information in this document is indicative and is intended to act as a guide only as to the finished product. Journey times are approximate only. Source Google Maps. Lifestyle imagery indicative only. Source: Ofsted, 2024. Snobe, 2024.



# PRIMARY SCHOOL



## HENDON PREPARATORY

- 20 Tenterden Grove, London NW4 1TD
- Girls and boys
  - Ages: 4 – 11
  - Ofsted Rating: Good

### Overview

Hendon Prep is a private day school, which prides itself on developing the potential in every child. It provides a personal approach to learning which means that each child's talents are nurtured and supported. Pupils consistently achieve excellent results which enables them to move on to some of the most selective senior schools in the country.

[hendonprep.co.uk](https://hendonprep.co.uk)  
2.2 miles away

## CHALGROVE PRIMARY SCHOOL

- Chalgrove Gardens, London N3 3PL
- Girls and boys
  - Ages: 4 – 11
  - Ofsted rating: Outstanding

### Overview

Chalgrove Primary School is a small, one-form entry, state primary school set in beautiful grounds which has a specialist autism provision on site.

[chalgroveprimary.org.uk](https://chalgroveprimary.org.uk)  
2.7 miles away

## ST JOSEPH'S RC PRIMARY SCHOOL

- Watford Way, London NW4 4TY
- Girls and boys
  - Ages: 3 – 11
  - Ofsted Rating: Good

### Overview

A Catholic school with an overall goal of fulfilling the church's mission in education by ensuring they provide the highest level of academic achievement in a moral and spiritual framework. The school aims to provides a stimulating curriculum with an emphasis on the core skills of Religious Education, English, Maths, Science and Computing.

[stjps.org](https://stjps.org)  
1.4 miles away

## GOODWYN SCHOOL

- Hammers Lane, London NW7 4DB
- Girls and boys
  - Ages: 3 – 11
  - Ofsted Rating: Good

### Overview

An independent day school which provides a dynamic and personalised approach to teaching. The school offers a broad curriculum and enables the children to celebrate their individuality and broaden their learning through an excellent extra-curricular programme.

[goodwyn-school.co.uk](https://goodwyn-school.co.uk)  
3.1 miles away

## HABERDASHERS' ASKE'S GIRLS SCHOOL

- Aldenham Road, Elstree, Hertfordshire WD6 3BT
- Girls
  - Ages 4 – 11
  - Ofsted Rating: N/A

### Overview

Haberdashers' Aske's Girls School an independent girls school that has an excellent reputation for academic attainments for girls aged between 4 and 11 years.

[habsgirls.org.uk](https://habsgirls.org.uk)  
6.1 miles away

## BARNET HILL ACADEMY

- 10a Montagu Road, London NW4 3ES
- Girls and boys
  - Ages: 3 – 11
  - Ofsted Rating: Good

### Overview

Barnett Hill Academy is an independent day school with an Islamic faith designation which aims to help children realise their spiritual, moral and academic potential. It's ethos is built on a tripartite vision with a focus on faith, excellence and knowledge.

[barnethillacademy.org.uk](https://barnethillacademy.org.uk)  
1.3 miles away

## HABERDASHERS' ASKE'S BOYS SCHOOL

- Butterfly Lane, Elstree, Hertfordshire WD6 3AF
- Boys
  - Ages: 4 – 11
  - Ofsted Rating: N/A

### Overview

Haberdashers' Aske's Boys School is a private day school ranked amongst the highest schools in the UK. It comprises two sections: the pre-prep department for pupils in Year 1 to 2, and the prep department for pupils in Years 3 to 6.

[habsboys.org.uk/preppre-prep/preppre-prep-home](https://habsboys.org.uk/preppre-prep/preppre-prep-home)  
6.5 miles away



# SECONDARY SCHOOL

## SECONDARY PATHS

Starting out at secondary school marks a significant stage in any child's life.

Silkstream is in the catchment of several highly-rated secondary, state and independent schools. And for those who want to travel further afield, good road and public transport links widen the choice in finding the right academic environment for your child.

## HENRIETTA BARNETT SCHOOL

Central Square, Hampstead Garden Suburb, London NW11 7BN

- Girls
- Ages: 11 – 18
- Ofsted Rating: Good

### Overview

Henrietta Barnett School is a nondenominational grammar school for girls, which is consistently one of the top state schools in the country and has a reputation for academic excellence. Founded in 1911 and situated in the peaceful surroundings of the Hampstead Garden Suburb, the school is situated in a charming Lutyens-designed Grade II\* listed building.

[hbschool.org.uk](https://hbschool.org.uk)

4 miles away

## SARACENS HIGH SCHOOL

Corner Mead, London NW9 4AS

- Girls and boys
- Ages 11 – 18
- Ofsted Rating: Good

### Overview

All pupils have access to a broad and balanced curriculum, which alongside an extra-curricular programme, enables each child to find and nurture their individual talents. A strong core curriculum sees pupils study English and Maths each day, and everyone takes part in daily private reading.

[saracenshigh.org](https://saracenshigh.org)

2.4miles away

## QUEEN ELIZABETH'S GIRLS' SCHOOL

High Street, Barnet, Hertfordshire EN5 5RR

- Girls
- Ages: 11 – 18
- Ofsted Rating: Good

### Overview

Founded in 1888, Queen Elizabeth's Girls' School is a very successful comprehensive school. According to Ofsted, the content and tone of the curriculum is academic with a good grounding in basic skills alongside development of enquiry and practical-based skills.

[qegschool.org.uk](https://qegschool.org.uk)

7.6 miles away

## HABERDASHERS' ASKE'S BOYS SCHOOL

Butterfly Lane, Elstree, Hertfordshire WD6 3AF

- Boys
- Ages: 11 – 18
- Ofsted Rating: N/A

### Overview

Haberdashers' Aske's Boys School is a private day school for male pupils. The school comprises of a senior department, for pupils aged 11 to 16 years and a sixth form for pupils aged 16 to 18 years. The school is committed to maintaining the highest standards in education.

[habsboys.org.uk](https://habsboys.org.uk)

6.5 miles away

## HENDON SCHOOL

Golders Rise, London NW4 2HP

- Girls and boys
- Ages: 11 – 18
- Ofsted Rating: Outstanding

### Overview

Hendon School is an over-subscribed secondary academy, which specialises in languages and is dedicated to helping students to realise their full potential in all aspects of life – academic, creative, physical and social. Hendon School is a National Citizen Service Champion School and hold the British Council International Schools Award.

[hendonschool.co.uk](https://hendonschool.co.uk)

2 miles away

## HABERDASHERS' ASKE'S GIRLS SCHOOL

Aldenham Road, Elstree, Hertfordshire WD6 3BT

- Girls
- Ages: 11 – 18
- Ofsted Rating: N/A

### Overview

Haberdashers' Aske's Girls School is a leading independent day school for girls aged 4 to 18 and our academic results place us amongst the highest ranked schools in the UK. One of the school's unique features is the fact that they are based on the same campus as Haberdashers' Boys' School. This provides the best of both worlds; a single-sex education in a co-educational environment.

[habsgirls.org.uk](https://habsgirls.org.uk)

6.2 miles away



# SECONDARY SCHOOL



## HARROW SCHOOL

5 High Street, Harrow on the Hill,  
Middlesex HA1 3HP

- Boys
- Ages: 13 – 18
- Ofsted Rating: N/A

### Overview

Harrow School is a full-boarding school for boys aged 13-18, founded in 1572 under a Royal Charter granted by Elizabeth I. Harrow's history and influence have made it one of the most prestigious schools in the world. The school has an enrolment of about 820 boys, all of whom board full-time, in twelve boarding houses. Harrow is a feeder school to Oxford and Cambridge ('Oxbridge') with around 22 pupils securing places at Oxbridge.

[harrowschool.org.uk](https://harrowschool.org.uk)

4.3 miles away

## HASMONEAN GIRLS HIGH SCHOOL

2-4 Page Street, Mill Hill, London NW7 2EU

- Girls
- Ages: 11 – 18
- Ofsted Rating: Good

### Overview

Hasmonean High School is a split-site state school, which provides two centres of educational excellence for the Orthodox Jewish community. The school delivers a first-rate religious education, outstanding secular studies and a broad and enriched curriculum. Hasmonean High School consistently attains high standards in their GCSE, BTEC and A Level examinations.

[hasmoneanmat.org.uk](https://hasmoneanmat.org.uk)

2.9 miles away

## WHITEFIELD SCHOOL

Claremont Rd, Brent Cross, London NW2 1TR

- Girls and boys
- Ages: 11 – 18
- Ofsted Rating: Good

### Overview

Whitefield School is a secondary school and sixth form. It was one of the first schools in Barnet to convert to academy status in 2011, in order to use the freedoms granted by this status to further improve the academic performance of its students. The school's work to promote pupils' personal development and welfare is outstanding.

[whitefield.barnet.sch.uk](https://whitefield.barnet.sch.uk)

2 miles away

## HASMONEAN BOYS HIGH SCHOOL

Holders Hill Road, London NW4 1NA

- Boys
- Ages: 11 – 18
- Ofsted Rating: Good

### Overview

Hasmonean High School is a split-site state school, which provides two centres of educational excellence for the Orthodox Jewish community. The school delivers a first-rate religious education, outstanding secular studies and a broad and enriched curriculum. Hasmonean High School consistently attains high standards in their GCSE, BTEC and A Level examinations.

[hasmoneanmat.org.uk](https://hasmoneanmat.org.uk)

3.3 miles away

## BRAMPTON COLLEGE

Lodge House, Lodge Rd, London NW4 4DQ

- Girls and boys
- Ages: 15 - 19
- Ofsted Rating: N/A

### Overview

Brampton College are one of the highest achieving sixth form colleges in London, providing a rigorous academic programme for young adults within an informal and friendly learning environment. Brampton offer a range of GCSE and A-Level courses with the guidance and flexibility to meet the needs of each student.

[bramptoncollege.com](https://bramptoncollege.com)

1.8 miles away

## LONDON BROOKES COLLEGE

Burroughs House, 42 The Burroughs,  
London NW4 4AP

- Girls and boys
- Ages: 15 - 19
- Ofsted Rating: N/A

### Overview

London Brookes College is an institution that offers a full range of high quality educational services in a friendly and welcoming environment. Students and individually looked after, cared for and feel confident in their ability to reach their full potential.

[londonbrookescollege.co.uk](https://londonbrookescollege.co.uk)

1.02 miles away



# SECONDARY SCHOOL

## QUEEN ELIZABETH'S SCHOOL

Queen's Road, Barnet, Hertfordshire EN5 4DQ

- Boys
- Ages: 11 – 18
- Ofsted Rating: Outstanding

### Overview

Queen Elizabeth's School is one of the best performing schools in the UK, across both state and independent. The school aims to produce young men who are confident, able and responsible. It encourages boys to discover, develop and express a resilient identity that is based on their own values, interests and personality.

### History

The School was founded in 1573 when Queen Elizabeth I granted a charter for the establishment of "the Free Grammar School of Queen Elizabeth in Barnet, for the education, bringing up and instruction of boys". This rich heritage continues to play an important role in the modern life of the School.

[gebarnet.co.uk](http://gebarnet.co.uk)

7.6 miles away

### Curriculum

Queen Elizabeth's support boys to investigate their subjects well beyond the scope of the syllabus, developing a free-thinking scholarship which enables them to think critically and to produce new insights and solutions. Their extensive programme of enrichment further enhances the academic experience.

### Results

Queen Elizabeth's is consistently among the very highest performing schools in the UK, across both the state and independent sectors, for exam results and the progress their boys make. In 2023 58.1% of A-levels were awarded A\* and the School also enjoyed its strongest ever GCSE results. Boys progress to the best universities in the world.



62 Oxbridge offers in 2024.



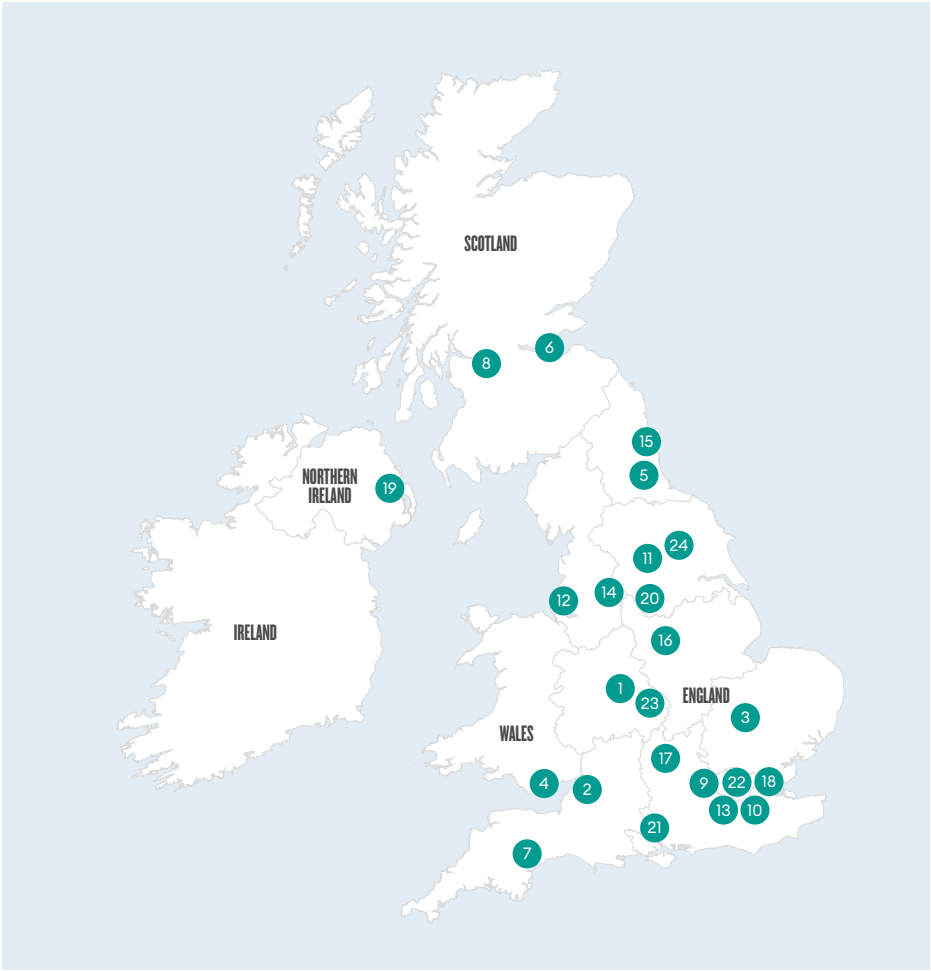
58% of A-levels awarded A\* in 2023.



Highest proportion of pupils sent to Russell Group universities than any other state-funded school in the country for the last 3 years.

### Russell Group Universities:

- |    |  |
|----|--|
| 01 | University of Birmingham                         |
| 02 | University of Bristol                            |
| 03 | University of Cambridge                          |
| 04 | Cardiff University                               |
| 05 | Durham University                                |
| 06 | University of Edinburgh                          |
| 07 | University of Exeter                             |
| 08 | University of Glasgow                            |
| 09 | Imperial College London                          |
| 10 | King's College London                            |
| 11 | University of Leeds                              |
| 12 | University of Liverpool                          |
| 13 | London School of Economics and Political Science |
| 14 | University of Manchester                         |
| 15 | Newcastle University                             |
| 16 | University of Nottingham                         |
| 17 | University of Oxford                             |
| 18 | Queen Mary University of London                  |
| 19 | Queen's University Belfast                       |
| 20 | University of Sheffield                          |
| 21 | University of Southampton                        |
| 22 | University College London                        |
| 23 | University of Warwick                            |
| 24 | University of York                               |



School profile copy sourced from school websites. For further details on schools please visit individual websites. The information in this document is indicative and is intended to act as a guide only as to the finished product. Journey times are approximate only. Source Google Maps. Lifestyle imagery indicative only. Source: Ofsted, 2024.



# UNIVERSITY

## GOING FURTHER

If going to university is the next step, Silkstream is close to many respected colleges in the area.

Middlesex University, with its awards for quality in teaching, learning and results, is within walking distance. Beyond that, Hendon's excellent transport links make travelling to one of Central London's world-class universities an easy option.

## MIDDLESEX UNIVERSITY

The Burroughs, Hendon, London NW4 4BT

### Overview

Middlesex University is one of the largest universities in the UK, with 24,000 students enrolled at its London campus. £200 million has been invested to transform the campus into a state-of-the-art centre for excellence, with facilities and equipment that rival those of the world's top universities. Middlesex University has a strong reputation for research amongst modern universities and their innovation in education has been rewarded with three Queen's Anniversary Prizes for Higher and Further Education. The University has also been awarded two Queen's Awards for Enterprise as a result of their international standing.

[mdx.ac.uk](http://mdx.ac.uk)

🚶🏻 Hendon Central

## IMPERIAL COLLEGE LONDON

South Kensington Campus, London SW7 2AZ

### Overview

Imperial College London is consistently ranked amongst the best universities in the world and forms part of the 'Golden Triangle' of six elite British universities, which also includes Oxford and Cambridge. Imperial is traditionally known for world-class science, engineering and medicine programmes, although more recently the Imperial College Business School and Humanities department have gained high regard. Imperial College London is part of the prestigious Russell Group and is ranked the 5th best university in the UK by the latest Times Good University Guide. It is regularly ranked as one of the ten best universities in the world (QS World Rankings). Ground breaking work and cutting edge research is consistently performed at the University, with 14 Nobel Prizes and 81 Fellowships from the Medical Sciences being awarded in the past.

[imperial.ac.uk](http://imperial.ac.uk)

🚶🏻 Gloucester Road

## KING'S COLLEGE LONDON

Strand, London WC2R 2LS

### Overview

King's College London is England's third oldest university having been founded in 1829. It has 12 Nobel Prize laureates among its alumni and current and former faculty. It is spread across five campuses in central London and currently has over 26,000 students enrolled. King's College London has played a major role in many of the advances that have shaped modern life, such as the discovery of the structure of DNA, and it is now the largest centre for the education of doctors, dentists and other healthcare professionals in Europe. Studying at King's College London will open up a number of opportunities to study around the world.

[kcl.ac.uk](http://kcl.ac.uk)

🚶🏻 Temple

## UNIVERSITY COLLEGE LONDON

2 Gower Street, Bloomsbury, London WC1E 6BT

### Overview

This is one of the top universities not only in England but the world. Matriculation is competitive here and students really need to make A\* and A grades at A-level in order to be successful. UCL is considered to be an academic all-rounder with top-notch teaching staff across all its courses.

[ucl.ac.uk](http://ucl.ac.uk)

🚶🏻 Holborn

## CENTRAL ST MARTIN'S

Granary Building, 1 Granary Square, London NIC 4AA

### Overview

Central Saint Martins is a world-renowned arts and design college, bringing together a diverse range of creative practices under one roof.

[arts.ac.uk/colleges/](http://arts.ac.uk/colleges/)

[central-saint-martins](http://central-saint-martins)

🚶🏻 Kings Cross. St Pancras

## REGENT'S UNIVERSITY LONDON

Inner Circle, Regent's Park, London, NW1 4NS

### Overview

Through brilliant teaching and transformative learning, Regent's University cultivate globally minded graduates to bring purpose and passion to people and the planet.

[regents.ac.uk](http://regents.ac.uk)

🚶🏻 Baker Street

🚶🏻 N32

## UNIVERSITY OF WESTMINSTER

309 Regent Street, London, W1B 2HW  
35 Marylebone Rd, London NW1 5LS  
115 New Cavendish St, London W1W 6UW  
32-38 Wells St, London W1T 3UW

### Overview

The University of Westminster's undergraduate, postgraduate and short courses span a variety of subjects from Architecture to Interiors, Computer Science to Journalism.

[westminster.ac.uk](http://westminster.ac.uk)

🚶🏻 Oxford Circus

🚶🏻 N32

## LONDON SCHOOL OF ECONOMICS AND POLITICAL SCIENCE

Houghton Street, London WC2A 2AE

### Overview

The London School of Economics and Political Science (LSE) is regarded as an international centre of academic excellence and innovation in the social sciences and was named University of the Year by the Good University Guide 2025.

[lse.ac.uk](http://lse.ac.uk)

🚶🏻 Holborn

## BIRKBECK UNIVERSITY

Malet St, London WC1E 7HX

### Overview

Birkbeck is a world-class research and teaching institution known for being cross-disciplinary, innovative and socially and politically engaged.

[bbk.ac.uk](http://bbk.ac.uk)

🚶🏻 Russell Square

## UNIVERSITY OF LONDON

32 Russell Square, London, WC1B 5DN

### Overview

The University of London is a pioneering institution committed to increasing access to education, championing research excellence and delivering social good.

[london.ac.uk](http://london.ac.uk)

🚶🏻 Russell Square

## SOAS UNIVERSITY OF LONDON

10 Thornhaugh St, London WC1H 0XG

### Overview

The School of Oriental & African Studies is a public research university in London, and a member institution of the federal University of London. Founded in 1916, SOAS is located in the Bloomsbury area of central London. SOAS is one of the world's leading institutions for the study of Asia, Africa and the Middle East.

[soas.ac.uk](http://soas.ac.uk)

🚶🏻 Russell Square

## QUEEN MARY UNIVERSITY OF LONDON

Mile End Rd, Bethnal Green, London E1 4NS

### Overview

Queen Mary University offer degrees across the full disciplinary spectrum. With campuses in London but also China, Malta and Paris; they are a true global university.

[qmul.ac.uk](http://qmul.ac.uk)

🚶🏻 Stepney Green

## UNIVERSITY OF THE ARTS LONDON

20 John Prince's Street, London, W1G 0BJ

### Overview

UAL is ranked second in the world for Art and Design, formed of 6 colleges, their academics deliver creative education and inspire new ways of thinking.

[warts.ac.uk](http://warts.ac.uk)

🚶🏻 Holborn



University profile copy sourced from university websites. For further details on universities please visit individual websites. The information in this document is indicative and is intended to act as a guide only as to the finished product. Journey times are approximate only. Source Google Maps.





# GETTING AROUND

## Fast connections to London's top universities

With direct transport links, reach the UK's top-ranked universities like UCL, LSE and Imperial College in less than 30 minutes from Silkstream\*.

### THAMESLINK FROM HENDON STATION

🚶 6 mins

- **Luton Airport**  
27 mins
- **St Albans**  
16 mins
- **SILKSTREAM**  
**Hendon Station**  
🚶 6 mins
- **Brent Cross**  
3 mins
- **West Hampstead**  
7 mins
- **King's Cross**  
**St Pancras Int**  
19 mins
- **Blackfriars**  
28 mins

### NORTHERN LINE FROM HENDON CENTRAL STATION

🚶 8 mins

- **Colindale**  
3 mins
- **SILKSTREAM**  
**Hendon Central Station**  
🚶 8 mins
- **Brent Cross**  
3 mins
- **Hampstead**  
8 mins
- **Camden Town**  
16 mins
- **Oxford Circus**  
25 mins
- **Leicester Square**  
27 mins
- **London Bridge**  
33 mins

### BUS (N32) FROM EDGWARE ROAD

🚶 1 min

- **SILKSTREAM**  
**Hendon Magistrates Court**
- **Maida Vale**  
18 mins
- **Little Venice**  
19 mins
- **Marble Arch**  
26 mins
- **Hyde Park Corner**  
31 mins

### BUS (N5) FROM EDGWARE ROAD

🚶 1 min

- **SILKSTREAM**  
**Hendon Magistrates Court**
- **Hampstead**  
17 mins
- **Camden**  
23 mins
- **Euston**  
33 mins

\* Journey times are approximate only. Source: tfl.gov.uk.



A contemporary collection of stylish suites, one, two and three bedroom apartments. All of the homes benefit from a balcony or terrace and are surrounded by beautifully landscaped, elevated gardens.





# WHERE FEELING GOOD COMES NATURALLY

## Residents enjoy complimentary access to The Silk Club

The Silk Club is an exclusive collection of residents' facilities designed to enhance your lifestyle and wellbeing at Silkstream.

A space that reflects today's modern way of living; The Silk Clubhouse is a welcome addition to your home. It features a concierge and sociable residents' lounge. There is also a co-working area with meeting spaces, video teleconferencing booths, beverage station and outdoor terrace overlooking the 1.5 acre public park.

A contemporary gym, fitness studio and two private screening rooms complete The Silk Club.





# CONTACT US



## Sales & Marketing Suite

4 The Hyde, London NW9 6FZ

Monday to Saturday: 10am – 6pm

Sunday: 10am – 5pm

020 3728 8833

[silkstreamnw9.co.uk](mailto:silkstreamnw9.co.uk)

[sales@silkstreamlondon.co.uk](mailto:sales@silkstreamlondon.co.uk)

OUR VISION  
**2030**  
TRANSFORMING TOMORROW

 **Berkeley**  
Group  
Proud member of the  
Berkeley Group

 **The Institute of  
Customer Service**  
MEMBER

 **CONSUMER  
CODE FOR  
HOME BUILDERS**  
[www.consumercode.co.uk](http://www.consumercode.co.uk)

 **tsi  
APPROVED CODE**  
TRADINGSTANDARDS.UK

 **St George**  
Designed for life

School profile copy sourced from school websites. For further details on schools please visit individual websites. The information in this document is indicative and is intended to act as a guide only as to the finished product. Accordingly, due to St George's policy of continuous improvement, the finished product may vary from the information provided. These particulars should not be relied upon as statements of fact or representations and applicants must satisfy themselves by inspection or otherwise as to their correctness. This information does not constitute a contract or warranty. The dimensions given on plans are subject to minor variations and are not intended to be used for carpet sizes, appliance sizes or items of furniture. Silkstream is a marketing name and will not necessarily form part of the approved postal address. Planning Permission number 19/4661/FUL. Granted by Barnet Council. Purchasers are acquiring an apartment with a new 996 year leasehold from May 2021. Like any investment, purchasing uncompleted properties situated outside Hong Kong is complicated and contains risk. You should review all relevant information and documents carefully before making a purchase decision. If in doubt, please seek independent professional advice before making a purchase decision. H061/41CA/0125.



[WWW.SILKSTREAMNW9.CO.UK](http://WWW.SILKSTREAMNW9.CO.UK)



**Berkeley**  
Group



**St George**  
Designed for life