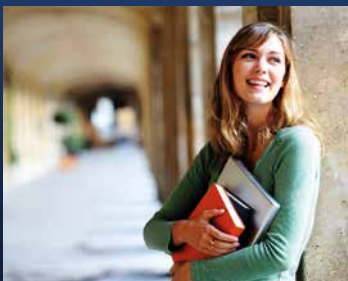


POPLAR
RIVERSIDE
E14

LONDON

the home of
**EDUCATIONAL
EXCELLENCE**



WORLD-CLASS
UNIVERSITIES
WITHIN EASY
REACH

PAGES 4-5



DISCOVER
VIBRANT
EAST LONDON
LIVING

PAGES 6-7

Enjoy GLOBALLY RENOWNED EDUCATION

London was ranked as the number one student city for 2023, the fourth year running that it has been awarded this status by the QS (Quacquarelli Symonds) World University Rankings. With its well-connected location in Zone 2/3, Poplar Riverside is perfectly placed for students to take advantage of the city's leading universities.

From 2024, more campuses will be opening in the area, joining University College London at East Bank. Located in Queen Elizabeth Olympic Park, this new centre for culture and innovation is just minutes from Poplar Riverside. Whether you wish to study at central London's historic institutions or the exciting new destinations in East London, Poplar Riverside is the ideal choice for your home.



Computer Generated Image is indicative only



10,000

NEW STUDENTS AT EAST BANK

THE PRESTIGIOUS **QUEEN MARY UNIVERSITY OF LONDON** IS JUST 16 MINUTES AWAY BY BICYCLE



UNIVERSITIES AND HIGHER EDUCATION

TRAVEL TIMES FROM POPLAR RIVERSIDE

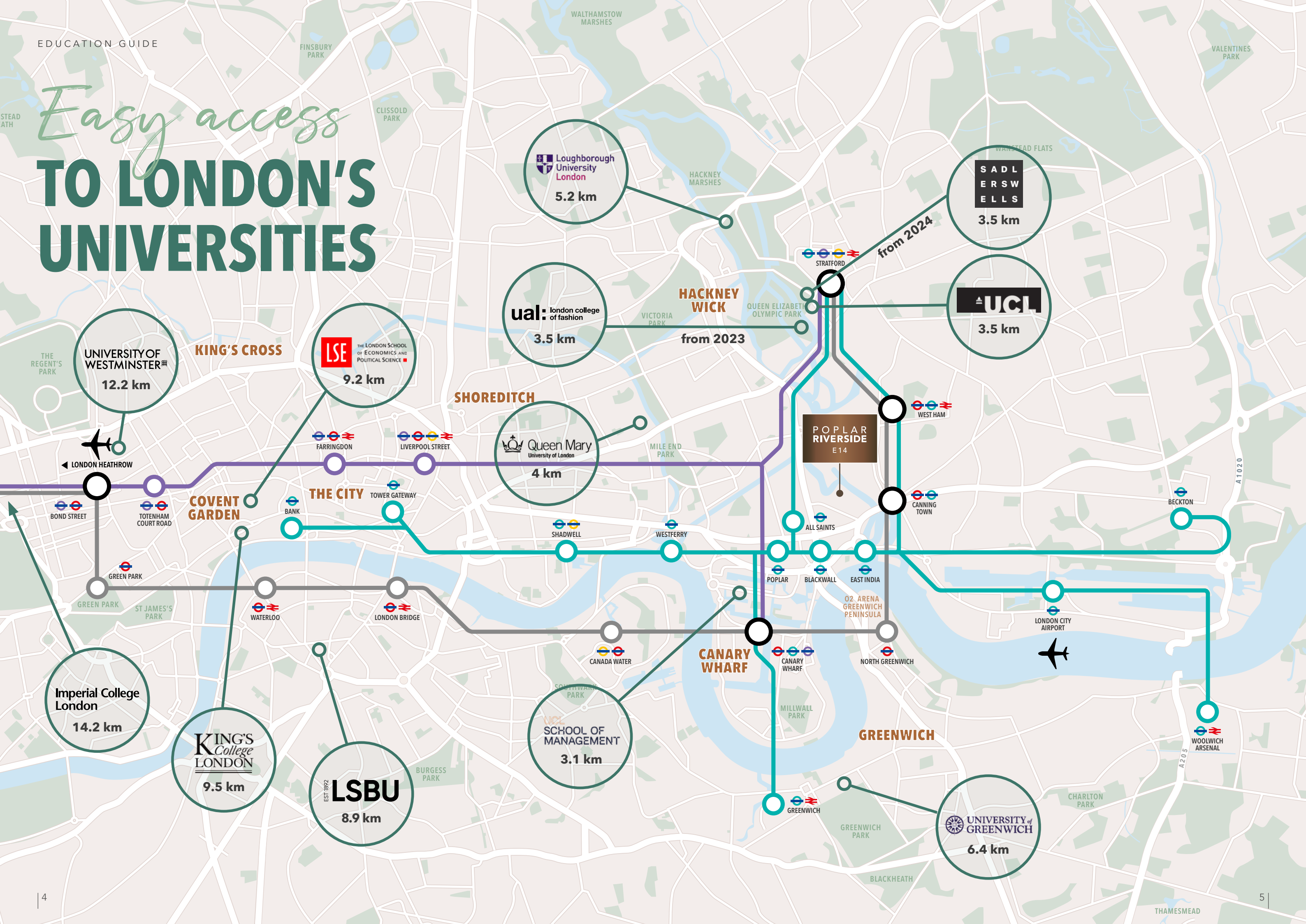
UCL School of Management 🚲 13 minutes by bicycle 1.9 miles/3.1km	Queen Mary University of London 🚲 16 minutes by bicycle 2.5 miles/4km	London School of Economics and Political Science 🚌🚇 44 minutes by bus and tube 5.7 miles/9.2km
UCL East 🚲 14 minutes by bicycle 2.2 miles/3.5km	Loughborough University London 🚲 18 minutes by bicycle 3.2 miles/5.2km	King's College London 🚇 40 minutes by tube 5.9 miles/9.5km
Sadler's Wells East (from 2024) 🚲 14 minutes by bicycle 2.2 miles/3.5km	University of Greenwich 🚲 33 minutes by DLR 4 miles/6.4km	University of Westminster 🚇 44 minutes by tube 7.6 miles/12.2km
UAL: London College of Fashion (from 2023) 🚲 14 minutes by bicycle 2.2 miles/3.5km	London South Bank University 🚌🚇 35 minutes by bus and tube 5.5 miles/8.9km	Imperial College London 🚌🚇 49 minutes by bus and tube 8.8 miles/14.2km



8 OUT OF THE 10
TOP RANKED LONDON UNIVERSITIES
CAN BE REACHED IN UNDER ONE HOUR

Travel times and distances are taken from Google Maps. Times are approximate and subject to time of travel, and are correct at time of distribution.

Easy access TO LONDON'S UNIVERSITIES



Discover EAST LONDON LIVING

East London is the place to be for a vibrant, unique lifestyle. With major shopping and cultural destinations such as Canary Wharf, Westfield Stratford City and the Queen Elizabeth Olympic Park, plus new homes for the V&A, Sadler's Wells and English National Ballet, there are many opportunities for leisure and entertainment – and all easily reached from Poplar Riverside thanks to the plentiful transport connections.



Westfield STRATFORD CITY

The largest shopping mall in Europe, Westfield Stratford City is the ultimate destination for food, fashion and fun.

- 300+ SHOPS AND PLACES TO EAT
- 241,500 SQ FT
- EVENTS AND ENTERTAINMENT



CANARY WHARF

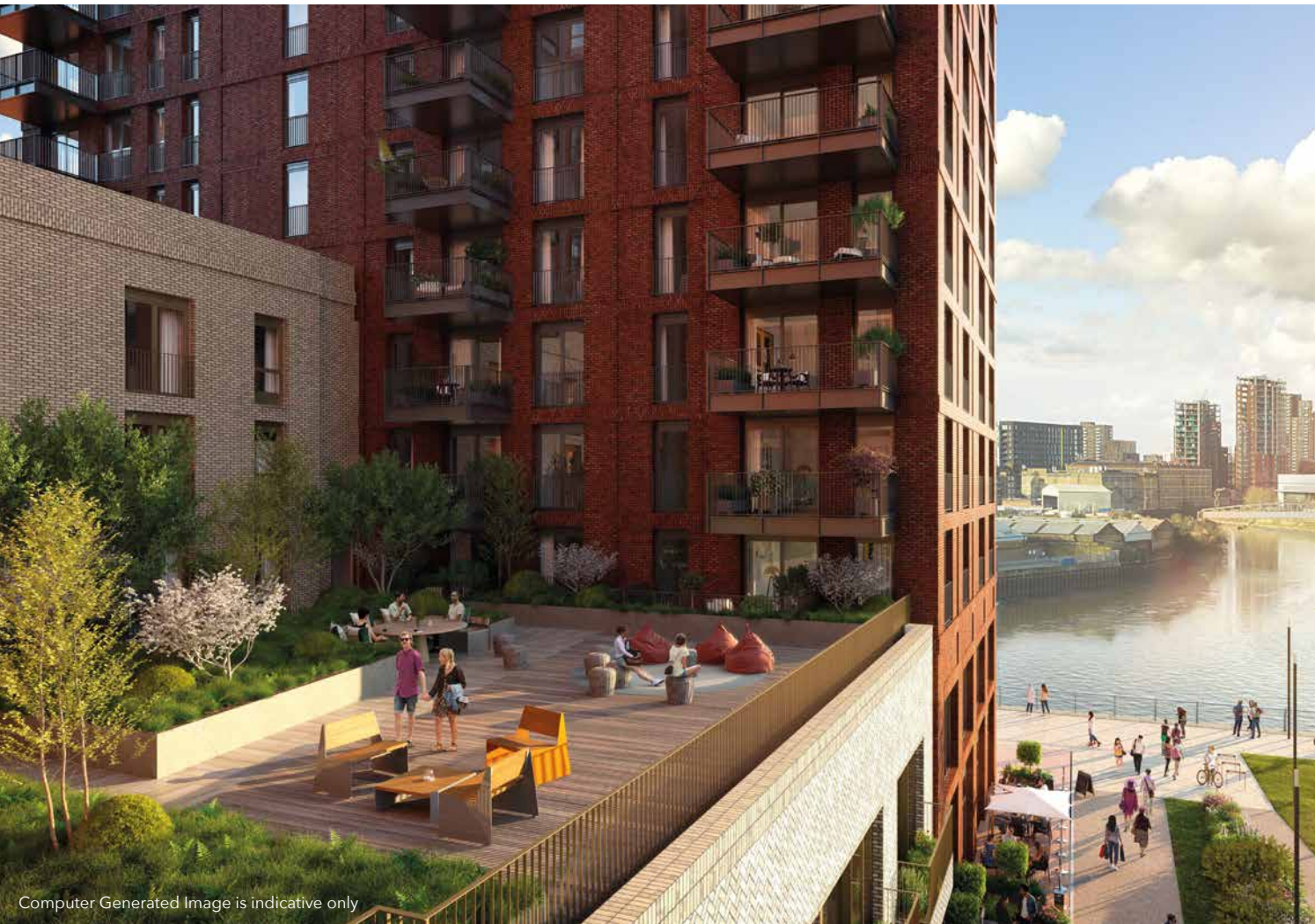
One of London's biggest financial and business districts, Canary Wharf is also home to hundreds of shops, bars, restaurants, events and experiences, all set around the waterways of the former docklands.

- 5 SHOPPING MALLS
- CROSSRAIL PLACE ROOF GARDENS
- ICE RINK
- 20 ACRES OF PARKS
- 300+ SHOPS, CAFÉS, BARS AND RESTAURANTS

QUEEN ELIZABETH OLYMPIC PARK

Host of the 2012 London Olympic Games, the complex is now a beautifully landscaped park with top sporting facilities, major art installations and live music venues.

- TOP SWIMMING, CYCLING AND RUNNING VENUES
- 560 ACRES
- ARCELOMITTAL ORBIT, THE WORLD'S TALLEST AND LONGEST TUNNEL SLIDE
- MAJOR MUSIC ACTS AND SPORTS EVENTS



Computer Generated Image is indicative only

Student life CLOSER TO HOME

Poplar itself is also growing into a go-to area – a buzzy, characterful neighbourhood with new shops, amenities and open spaces.



POPLAR WORKS

Poplar Works is a new space for fashion in East London. It offers over 40 studios across its two sites in Poplar, an extensive enterprise and events programme, training spaces, production unit and café. Supported by the Mayor of London, it is a partnership between Poplar HARCA, UAL: London College of Fashion and The Trampery.



SUPPORTED BY
MAYOR OF LONDON

POPULAR
HARCA

ual: london college
of fashion

**THE
TRAMPERY**

**FASHION
DISTRICT**



ABERFELDY VILLAGE

The Aberfeldy Village is a vibrant community just a five minute walk from Poplar Riverside. It is undergoing extensive regeneration to deliver over 1,000 new homes, community facilities, retail space, a new park, courtyards and landscaping.



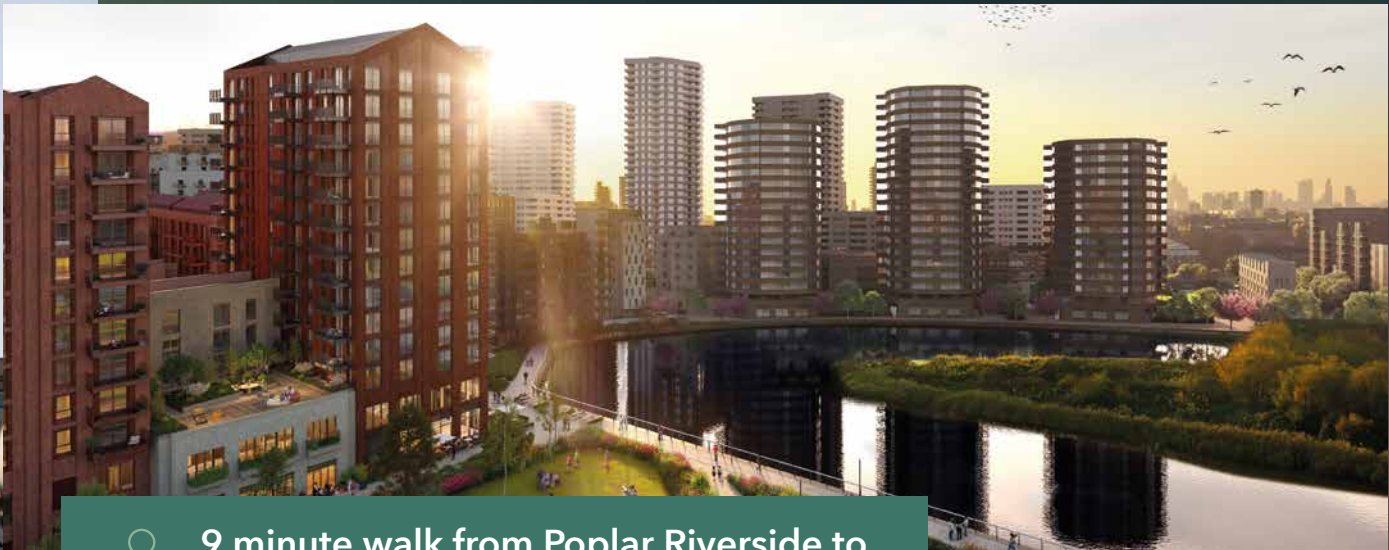
CHRISP STREET MARKET

Poplar's central shopping district is being regenerated, with two new parks, a community hub, new cinema and restaurants. Its iconic Festival of Britain buildings, Clock Tower and Idea Store will be retained, helping to preserve the individual character and heritage of the neighbourhood.



Explore LONDON'S HERITAGE AND VIBRANCY

Not only does London have some of the best universities in the world, it was recently voted the best city in the world*. Study here, and the whole of this magnificent capital is available to explore, with its vast range of shopping, dining, social, entertainment, cultural, heritage and sporting attractions.



9 minute walk from Poplar Riverside to East India DLR station



Travel times from East India DLR station

The City

12 minutes

Historic financial district, with skyscrapers, medieval alleyways, St Paul's Cathedral and numerous smart restaurants and bars.

King's Cross St Pancras

22 minutes

Canalside walks, the British Library, Granary Square and Coal Drops Yard with restaurants, cafés and shops.

The West End

23 minutes

London's theatreland, with dozens of theatres and performance venues, shopping and buzzing nightlife.

Kensington

36 minutes

Beautiful parks, cobbled mews, famous museums, Kensington Palace and the Royal Albert Hall.

Knightsbridge

37 minutes

Luxury shopping destination with iconic department stores Harrods and Harvey Nichols, and international fashion brands.



*Awarded by real estate and consultancy firm Resonance. Travel times are approximate and subject to time of travel, and are correct at time of distribution. Source: tfl.gov.uk

POPLAR RIVERSIDE

E14

Contact the team for further information

WWW.POPLAR-RIVERSIDE.CO.UK

SALES.POPLARRIVERSIDE@STWILLIAM.CO.UK

+44 (0)20 3326 2617

OUR VISION
2030
TRANSFORMING TOMORROW



Berkeley
Group

Proud member of the
Berkeley Group

St William
Designed for life

Computer generated images of Poplar Riverside are indicative only. Maps are for illustration purposes only and not to scale. Travel times taken from Google Maps, tfl.gov.uk and crossrail.co.uk.
Prices and details correct at time of going to press May 2023.