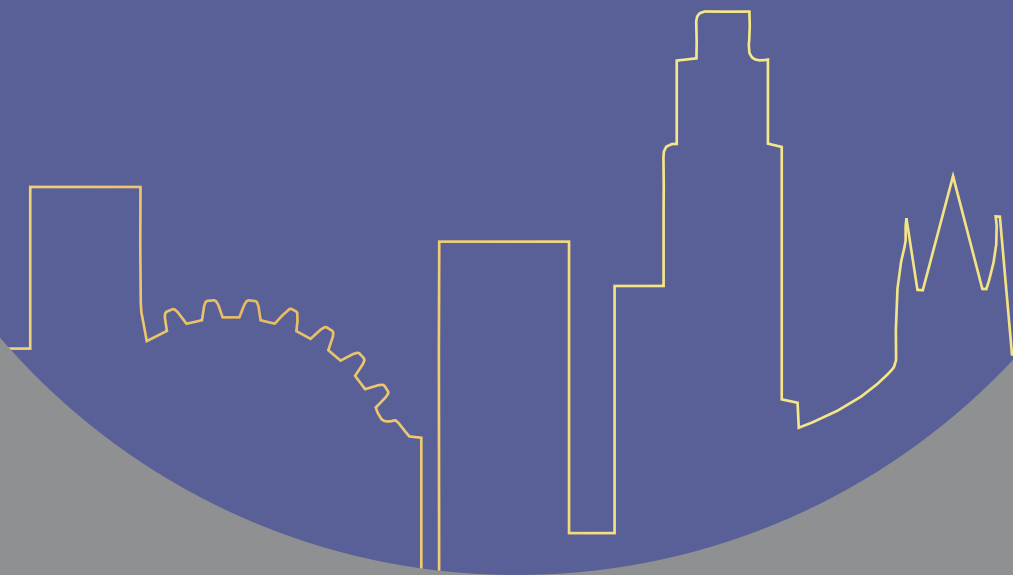




# THE LANDMARK COLLECTION





Computer generated imagery is indicative only  
and subject to change

Welcome to the Landmark Collection, a selection of one, two and three bedroom apartments boasting spectacular views towards some of London's most iconic landmarks including the London Eye and the Houses of Parliament.

Oval Village is an elegant and unique neighbourhood within central London, blending tranquility, fantastic connectivity and a superb range of residents' facilities.



Computer generated imagery is indicative only  
and subject to change



Oval Village's spacious green havens, designed by renowned landscape architects, provide vital spaces to breathe, relax and unwind or simply spend time with friends and enjoy the surrounding beauty. These interconnected green spaces will become focal points for the whole community.



Computer generated imagery is indicative only  
and subject to change

# WELCOME HOME

All of the interiors at Oval Village are infused with a refined and minimalist material palette for a modern look.

The accents and fittings provide clean lines and reflective finishes, which create a layered and inherently beautiful aesthetic.





Photography depicts show home at Oval Village

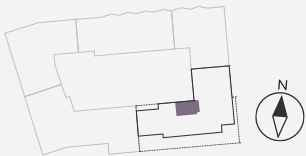


# ONE BEDROOM APARTMENT

TYPE CC



Apartment	1.9.1 / 1.10.1 / 1.11.1	
Level	9, 10 & 11	
Living / Dining	4.34 x 3.46m	14'2" x 11'3"
Kitchen	3.78 x 3.00m	12'4" x 9'8"
Bedroom	3.51 x 3.09m	11'5" x 10'1"
Total Net Internal Area	<b>54 sq m</b>	<b>583 sq ft</b>



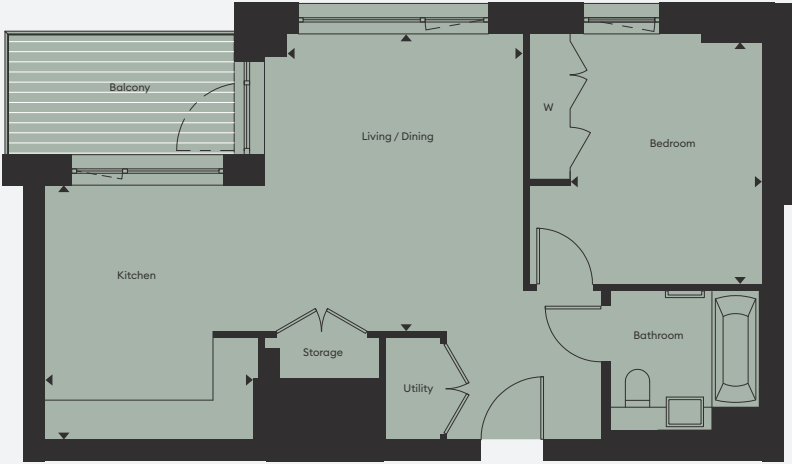
KEY

W : Wardrobe

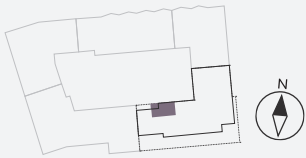
Layouts shown here are for approximate measurements only, they are not necessarily to scale.  
Exact layout and sizes of property may vary.  
All measurements may vary within a tolerance of 5%.

# ONE BEDROOM APARTMENT

TYPE FF



Apartment	1.9.2	
Level	9	
Living / Dining	3.37 x 4.14m	11'0" x 13'5"
Kitchen	3.07 x 3.79m	10'0" x 12'4"
Bedroom	2.79 x 3.79m	9'1" x 12'4"
Total Net Internal Area	54 sq m	583 sq ft



KEY

W : Wardrobe

Layouts shown here are for approximate measurements only, they are not necessarily to scale.  
Exact layout and sizes of property may vary.  
All measurements may vary within a tolerance of 5%.

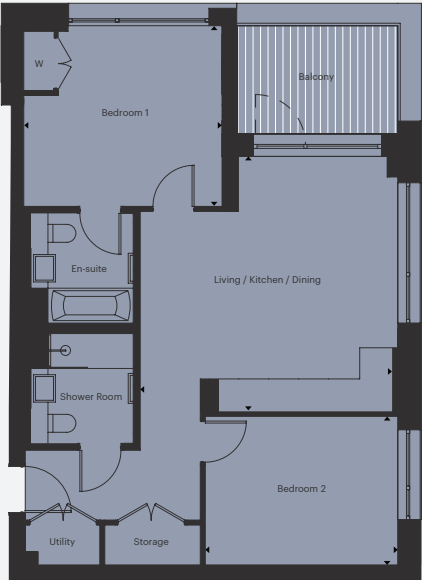


Photography depicts show home at Oval Village

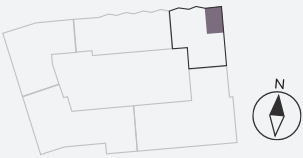


# TWO BEDROOM APARTMENT

TYPE U



Apartment	2.74	
Level	7	
Living / Kitchen / Dining	5.21 x 5.47m	17'0" x 17'9"
Bedroom 1	3.59 x 3.85m	11'7" x 12'6"
Bedroom 2	4.18 x 2.72m	13'7" x 8'9"
Total Net Internal Area	72 sq m	779 sq ft



KEY  
W : Wardrobe

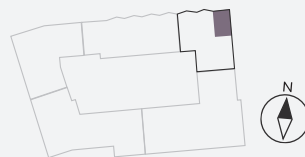
Layouts shown here are for approximate measurements only, they are not necessarily to scale.  
Exact layout and sizes of property may vary.  
All measurements may vary within a tolerance of 5%.

# TWO BEDROOM APARTMENT

TYPE W



Apartment	2.8.4	
Level	8	
Living / Kitchen / Dining	5.21 x 5.47m	17'0" x 17'9"
Bedroom 1	3.16 x 3.85m	10'3" x 12'6"
Bedroom 2	4.18 x 2.72m	13'7" x 8'9"
Total Net Internal Area	70 sq m	753 sq ft



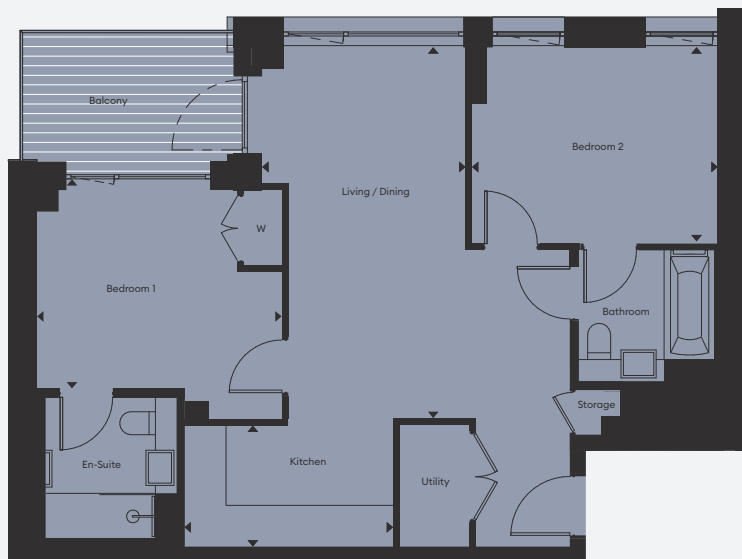
## KEY

W : Wardrobe

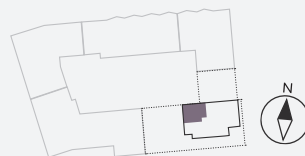
Layouts shown here are for approximate measurements only, they are not necessarily to scale.  
Exact layout and sizes of property may vary.  
All measurements may vary within a tolerance of 5%.

# TWO BEDROOM APARTMENT

TYPE HH



Apartment	1.14.1 / 1.15.1 / 1.16.1	
Level	14, 15 & 16	
Living / Dining	3.23 x 5.79m	10'5" x 18'9"
Kitchen	3.52 x 2.02m	11'5" x 6'6"
Bedroom 1	3.89 x 3.19m	12'7" x 10'4"
Bedroom 2	3.74 x 2.88m	12'2" x 9'4"
Total Net Internal Area	69 sq m	748 sq ft



KEY

W : Wardrobe

Layouts shown here are for approximate measurements only, they are not necessarily to scale.  
Exact layout and sizes of property may vary.  
All measurements may vary within a tolerance of 5%.





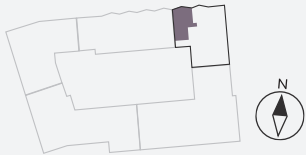
Photography depicts show home at Oval Village

# THREE BEDROOM APARTMENT

TYPE X



Apartment	2.6.6 / 2.7.6	
Level	6 & 7	
Living / Kitchen / Dining	3.86 x 9.04m	12'6" x 29'6"
Bedroom 1	3.01 x 3.35m	9'8" x 10'9"
Bedroom 2	3.13 x 3.11m	10'2" x 10'2"
Bedroom 3	3.01 x 2.77m	9'8" x 9'0"
Total Net Internal Area	102 sq m	1103 sq ft

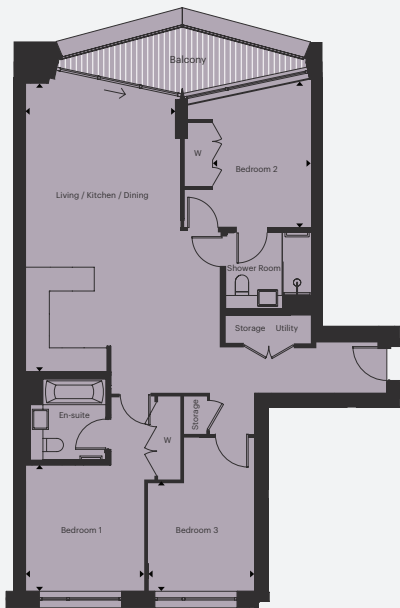


KEY  
W : Wardrobe

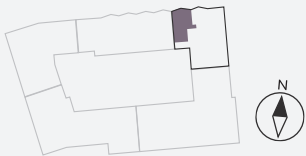
Layouts shown here are for approximate measurements only, they are not necessarily to scale.  
Exact layout and sizes of property may vary.  
All measurements may vary within a tolerance of 5%.

# THREE BEDROOM APARTMENT

TYPE Y



Apartment	2.8.6	
Level	8	
Living / Kitchen / Dining	3.86 x 9.04m	12'6" x 29'6"
Bedroom 1	3.01 x 3.35m	9'8" x 10'9"
Bedroom 2	4.12 x 2.74m	13'5" x 8'9"
Bedroom 3	3.01 x 2.77m	9'8" x 9'0"
Total Net Internal Area	100 sq m	1079 sq ft



KEY

W : Wardrobe

Layouts shown here are for approximate measurements only, they are not necessarily to scale.  
Exact layout and sizes of property may vary.  
All measurements may vary within a tolerance of 5%.

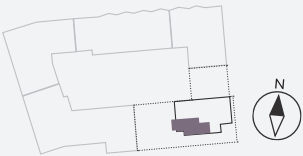


# THREE BEDROOM APARTMENT

TYPE LL



Apartment	1.14.2 / 1.15.2 / 1.16.2	
Level	14, 15 & 16	
Living / Kitchen / Dining	6.06 x 5.29m	19'8" x 17'3"
Bedroom 1	3.50 x 3.00m	11'4" x 9'8"
Bedroom 2	4.18 x 3.04m	13'7" x 9'9"
Bedroom 3	3.05 x 3.69m	10'0" x 12'1"
Total Net Internal Area	98 sq m	1056 sq ft



KEY  
W : Wardrobe

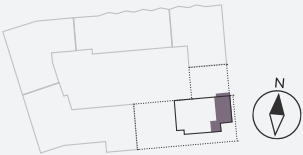
Layouts shown here are for approximate measurements only, they are not necessarily to scale.  
Exact layout and sizes of property may vary.  
All measurements may vary within a tolerance of 5%.

# THREE BEDROOM APARTMENT

TYPE MM



Apartment	1.14.3 / 1.15.3 / 1.16.3	
Level	14, 15 & 16	
Living / Kitchen / Dining	3.90 x 7.44m	12'7" x 24'4"
Bedroom 1	3.04 x 4.08m	9'9" x 13'3"
Bedroom 2	3.45 x 3.24m	11'3" x 10'6"
Bedroom 3	3.62 x 3.24m	11'8" x 10'6"
Total Net Internal Area	101 sq m	1090 sq ft



KEY  
W : Wardrobe

Layouts shown here are for approximate measurements only, they are not necessarily to scale.  
Exact layout and sizes of property may vary.  
All measurements may vary within a tolerance of 5%.



Photography depicts show home at Oval Village



Photography depicts show home at Oval Village



[ovalvillage.co.uk](http://ovalvillage.co.uk)



**Berkeley**  
Group  
Proud to be a member of the  
Berkeley Group of companies

**Berkeley**  
Designed for life