



OAKHILL

HILDENBOROUGH | KENT

NICHOLSON HOUSE

Berkeley
Designed for life

OAKHILL

AN EXCLUSIVE PARKLAND ESTATE

Tucked away in the heart of the countryside, Oakhill in Hildenborough is one of Kent's best-kept secrets.

Enter the gated estate to discover an exquisite collection of 1, 2 & 3 bedroom apartments and 3, 4 & 5 bedroom houses. They are set in 30 acres of beautiful parkland, surrounding the original 19th-century Oakhill House, which has now been converted into six exclusive apartments. Explore the private Residents' Club with its cinema, gym, BBQ area, padel court and a spacious co-working space. With every step, a new view of the Kentish countryside unfolds.

The 30-acre parkland estate has a grand history. It's been at the heart of Hildenborough village life since its foundation in 1804. Today, Oakhill continues this legacy by returning the Grade II listed Oakhill House to its original residential use, converting existing buildings into elegant apartments, and building new homes inspired by the traditional English style.

Explore further afield and you will discover the vibrant market town of Tonbridge with its medieval castle; wonderful gardens and country walks in the Kentish wilderness; and excellent primary, secondary, private and grammar schools.

The enchanting towns of Sevenoaks and Royal Tunbridge Wells are just 6 and 9 miles away*, respectively. There, you will find impressive stately homes and Georgian architecture, as well as a selection of galleries, theatres, and Michelin-starred restaurants.

With trains to London Bridge in just 32 minutes** from Hildenborough, Oakhill combines the best of contemporary living with a rural escape in the Garden of England.

*Source: Google maps **Travel time is approximate only. Source: Trainline.com.

NICHOLSON HOUSE

All 2 and 3 bedroom apartments at Nicholson House come with secluded balconies or terraces, some of which show far reaching views across the open park. Home to the residents' facilities, as well as secure underground parking.

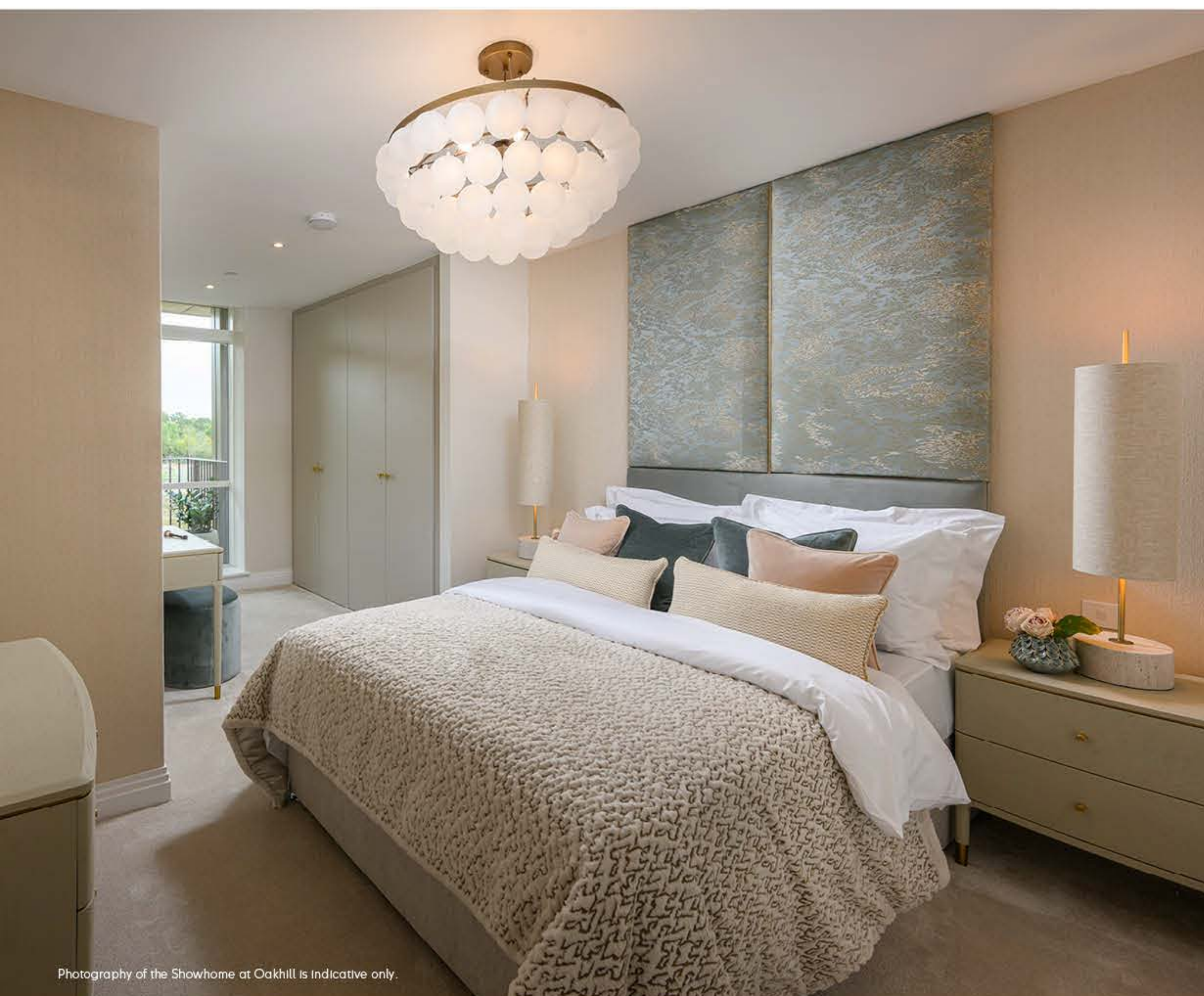


Computer generated image of Oakhill. Indicative only.



**STYLISH KITCHENS**

Elegant, functional, contemporary kitchens that are fully integrated for a sleek look and equipped with integrated appliances.



Photography of the Showhome at Oakhill is indicative only.

ARTFUL LIVING

Where every day is the grand reveal.
Oakhill interiors have been designed
to impress, again and again.



Photography of the Showhome at Oakhill is indicative only.



THE COUNTRY PARK

A large part of Oakhill's 30 acres is a private country park, offering picturesque views and a green escape right on your doorstep. With walking trails and big open spaces for picnics and play, this is a parkland estate at its finest.

Photography taken at Oakhill.

YOUR PRIVATE VIEW

From the secluded woodlands to the Kentish countryside beyond, the natural world is front of stage at Nicholson House. It's an evolving theatre of changing seasons, flourishing wildlife, and blossoming landscape. Step out of your home into carefully tended grounds and an expansive country park.



The site map is indicative only and subject to change.
In line with our policy of continuous improvement we reserve the right to alter the layout, building style, landscaping and specification at anytime without notice.

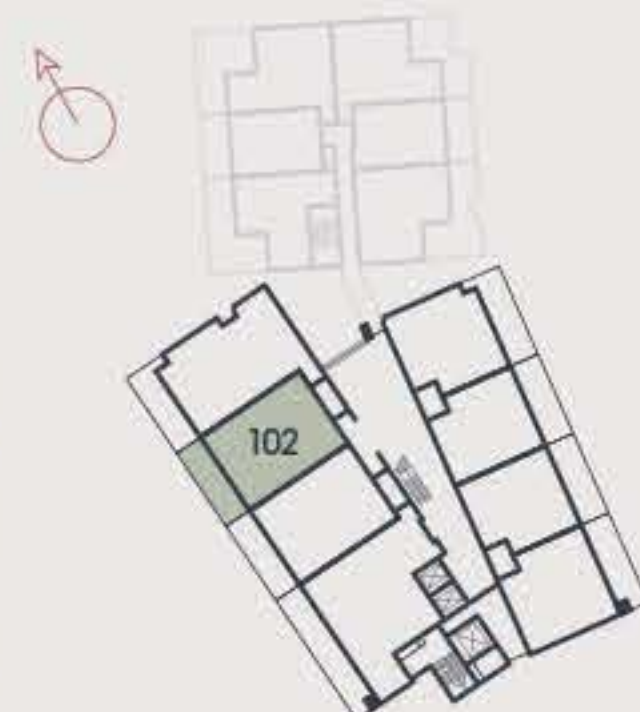
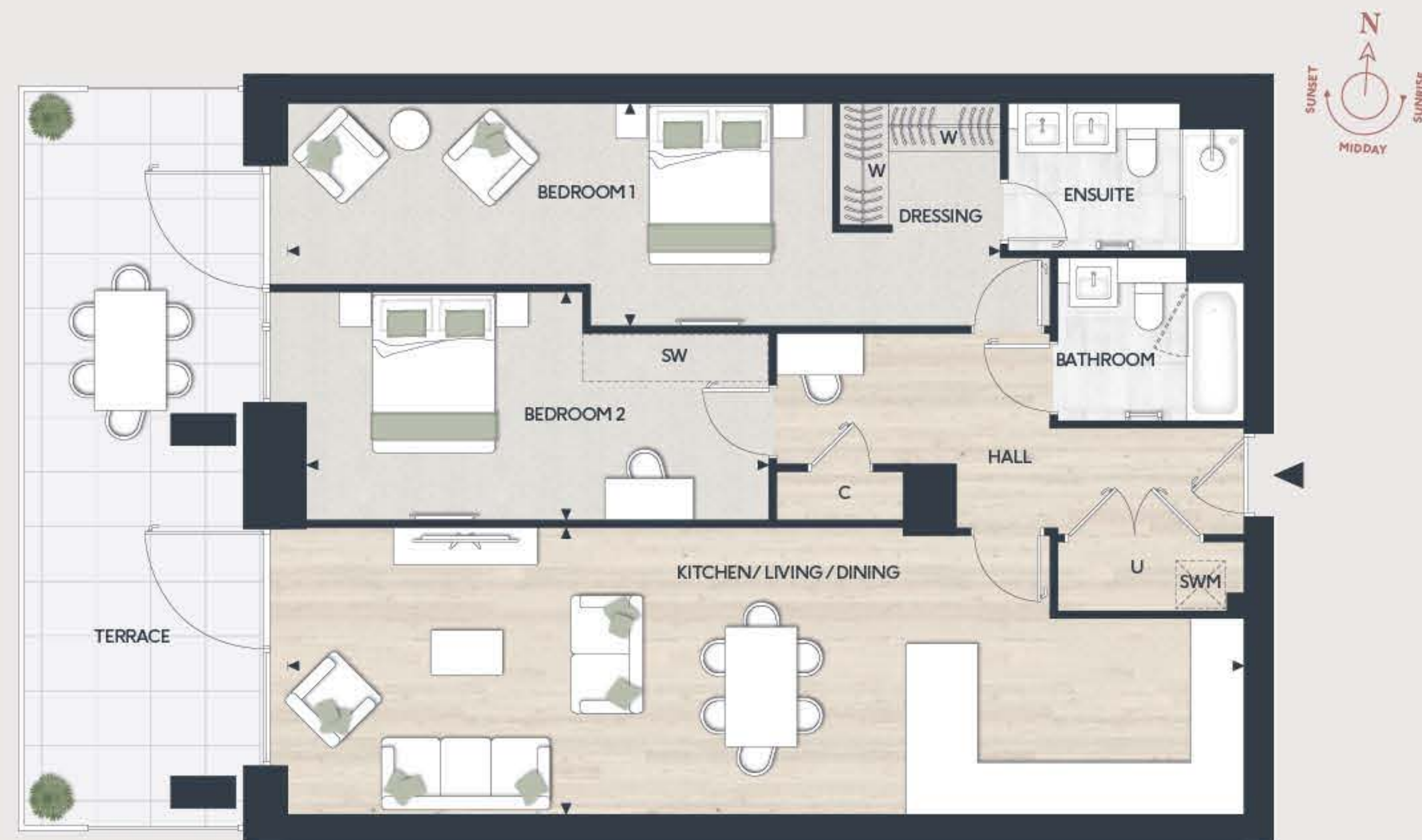
NICHOLSON HOUSE

TWO BEDROOM APARTMENT

APARTMENT 102

FLOOR: GROUND

TOTAL AREA: 104.9 SQ M 1,129.4 SQ FT



KITCHEN/LIVING	12.06M X 3.53M	39'7" X 11'7"
BEDROOM 1	9.04M X 2.75M	29'8" X 9'0"
BEDROOM 2	6.17M X 2.82M	20'3" X 9'3"
TERRACE	25.0 SQ M	269.0 SQ FT

KEY

◀▶	Measurement Points	SW	Space for Wardrobe
W	Wardrobe	U	Utility Cupboard
C	Cupboard	SWM	Space for Washing Machine

Floorplans shown are for approximate measurements only. Exact layouts and sizes may vary. All measurements may vary within a tolerance of 5%. The dimensions are not intended to be used for carpet sizes, appliance sizes or items of furniture. Furniture layouts are indicative only. Kitchen layout indicative only. Please ask Sales Consultant for further information. Floorplans have been sized to fit the page, as a result this plan may not be at the same scale as plans on other pages.

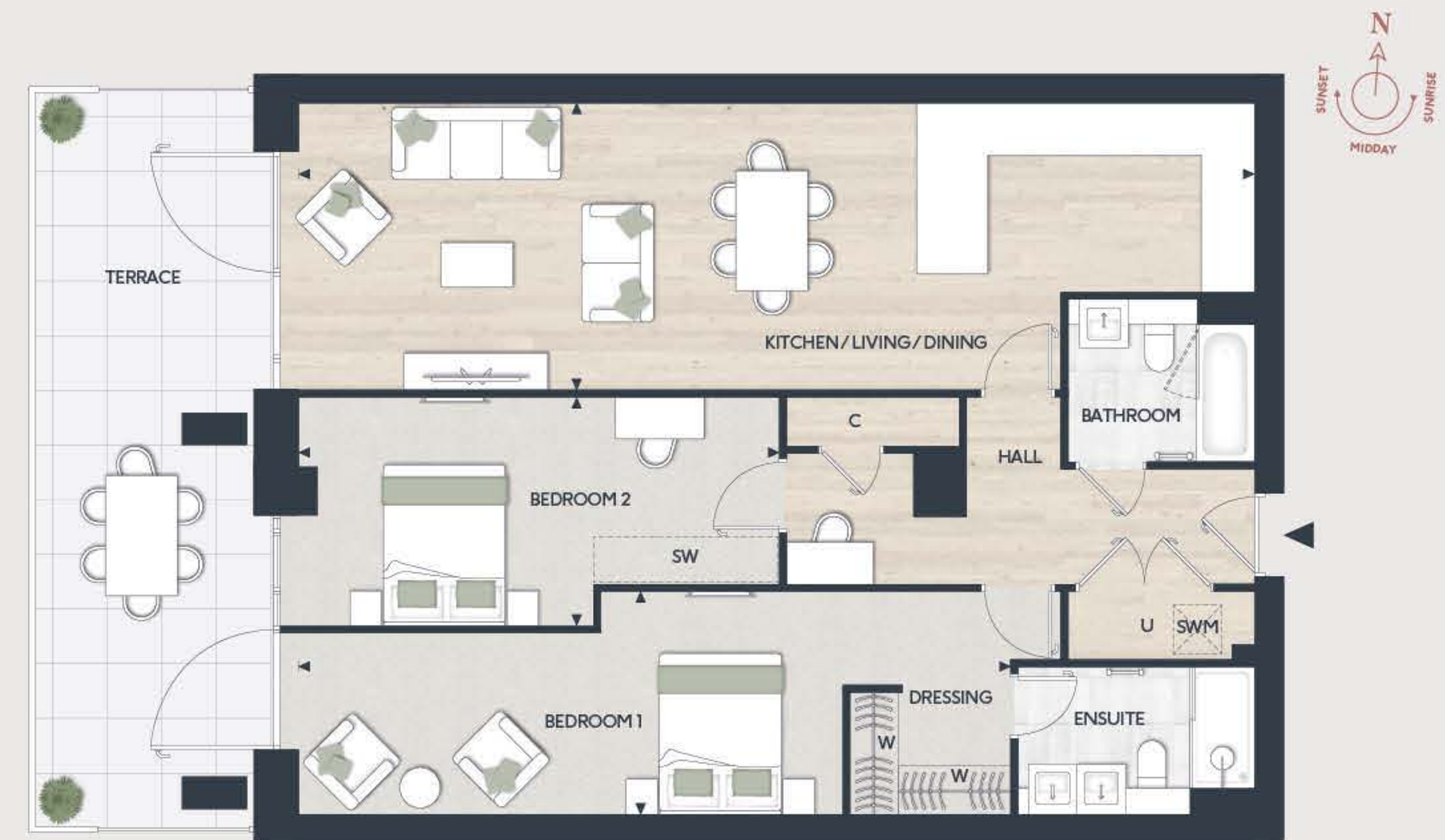
OAKHILL

TWO BEDROOM APARTMENT

APARTMENT 103

FLOOR: GROUND

TOTAL AREA: 106.5 SQ M 1,146.4 SQ FT



KITCHEN/LIVING/DINING	12.08M X 3.65M	39'7" X 12'0"
BEDROOM 1	9.05M X 2.78M	29'8" X 9'1"
BEDROOM 2	6.19M X 2.80M	20'4" X 9'2"
TERRACE	25.0 SQ M	269.0 SQ FT

KEY

◀▶	Measurement Points	SW	Space for Wardrobe
W	Wardrobe	U	Utility Cupboard
C	Cupboard	SWM	Space for Washing Machine

Floorplans shown are for approximate measurements only. Exact layouts and sizes may vary. All measurements may vary within a tolerance of 5%. The dimensions are not intended to be used for carpet sizes, appliance sizes or items of furniture. Furniture layouts are indicative only. Kitchen layout indicative only. Please ask Sales Consultant for further information. Floorplans have been sized to fit the page, as a result this plan may not be at the same scale as plans on other pages.

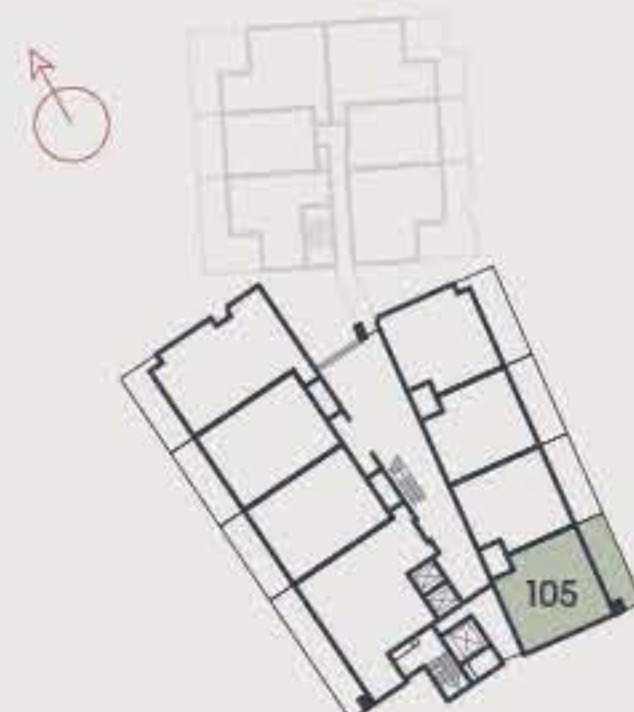
NICHOLSON HOUSE

TWO BEDROOM APARTMENT

APARTMENT 105

FLOOR: GROUND

TOTAL AREA: 91 SQ M 979.5 SQ FT



KITCHEN/LIVING/DINING	7.55M X 3.92M	24'9" X 12'10"
BEDROOM 1	7.61M X 2.75M	25'0" X 9'0"
BEDROOM 2	5.21M X 2.75M	17'1" X 9'0"
TERRACE	27.0 SQ M	290 SQ FT

KEY

◀▶	Measurement Points	SW	Space for Wardrobe
W	Wardrobe	U	Utility Cupboard
C	Cupboard	SWM	Space for Washing Machine

Floorplans shown are for approximate measurements only. Exact layouts and sizes may vary. All measurements may vary within a tolerance of 5%. The dimensions are not intended to be used for carpet sizes, appliance sizes or items of furniture. Furniture layouts are indicative only. Kitchen layout indicative only. Please ask Sales Consultant for further information. Floorplans have been sized to fit the page, as a result this plan may not be at the same scale as plans on other pages.

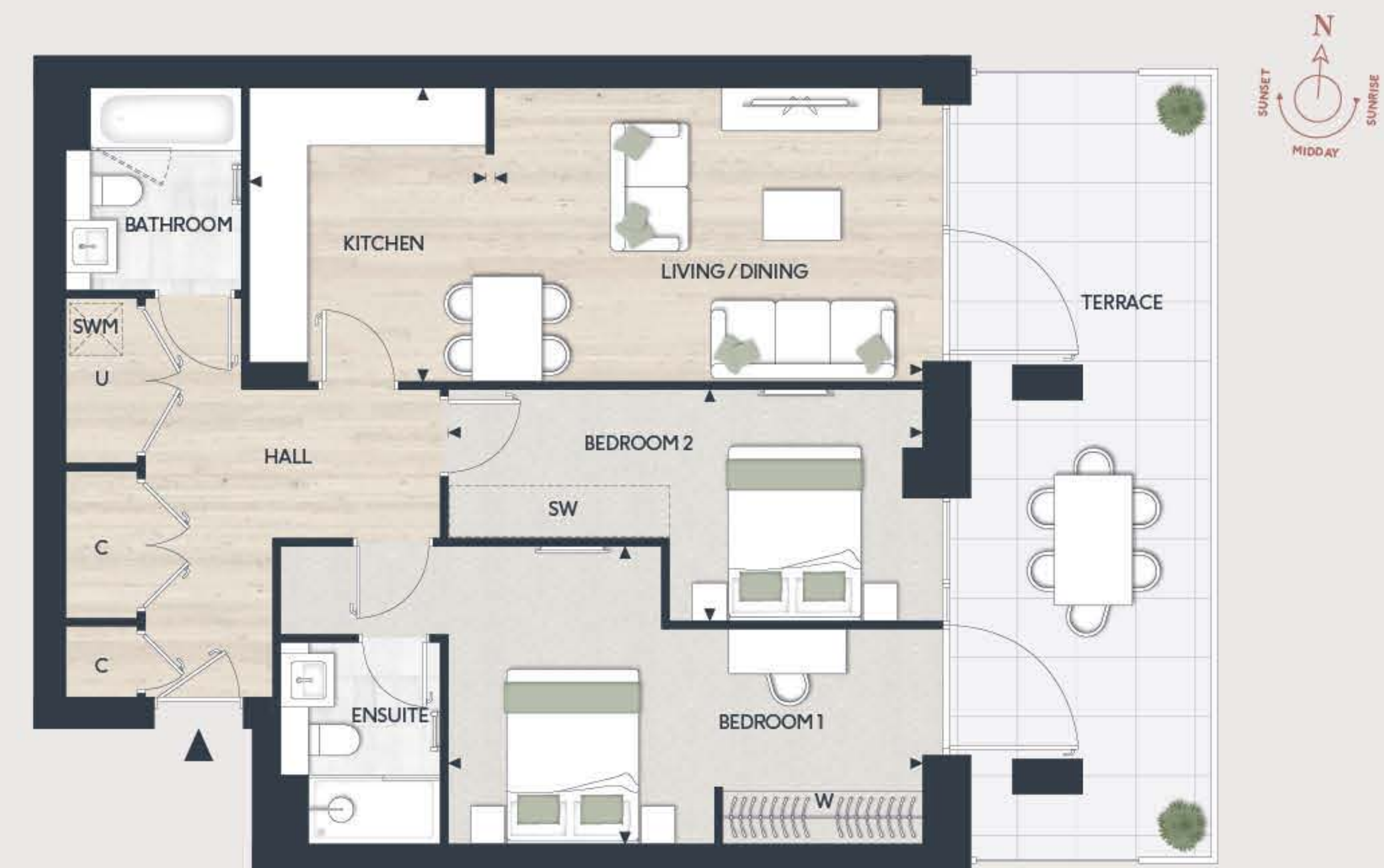
OAKHILL

TWO BEDROOM APARTMENT

APARTMENT 106

FLOOR: GROUND

TOTAL AREA: 81.6 SQ M 877.8 SQ FT



KITCHEN	2.70M X 3.35M	8'10" X 11'0"
LIVING/DINING	5.09M X 3.35M	16'9" X 11'0"
BEDROOM 1	5.63M X 3.40M	18'9" X 11'2"
BEDROOM 2	5.18M X 2.63M	17'0" X 8'8"
TERRACE	24.6 SQ M	264 SQ FT

KEY

◀▶	Measurement Points	SW	Space for Wardrobe
W	Wardrobe	U	Utility Cupboard
C	Cupboard	SWM	Space for Washing Machine

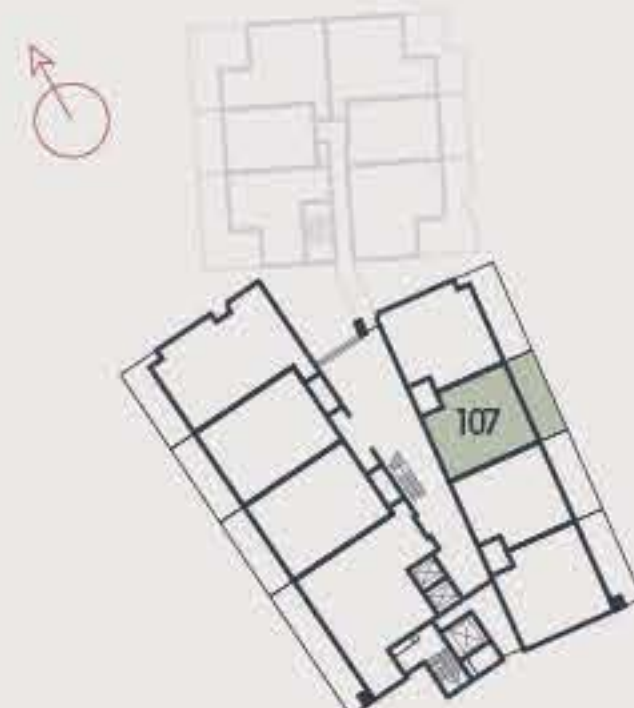
Floorplans shown are for approximate measurements only. Exact layouts and sizes may vary. All measurements may vary within a tolerance of 5%. The dimensions are not intended to be used for carpet sizes, appliance sizes or items of furniture. Furniture layouts are indicative only. Kitchen layout indicative only. Please ask Sales Consultant for further information. Floorplans have been sized to fit the page, as a result this plan may not be at the same scale as plans on other pages.

TWO BEDROOM APARTMENT

APARTMENT 107

FLOOR: GROUND

TOTAL AREA: 81.5 SQ M 877.6 SQ FT



KITCHEN	2.70M X 3.13M	8'10" X 10'3"
LIVING/DINING	4.74M X 3.34M	15'7" X 11'0"
BEDROOM 1	7.60M X 3.92M	24'11" X 12'10"
BEDROOM 2	4.74M X 2.65M	15'7" X 8'8"
TERRACE	24.6 SQ M	264 SQ FT

KEY

◄►	Measurement Points	SW	Space for Wardrobe
W	Wardrobe	U	Utility Cupboard
C	Cupboard	SWM	Space for Washing Machine

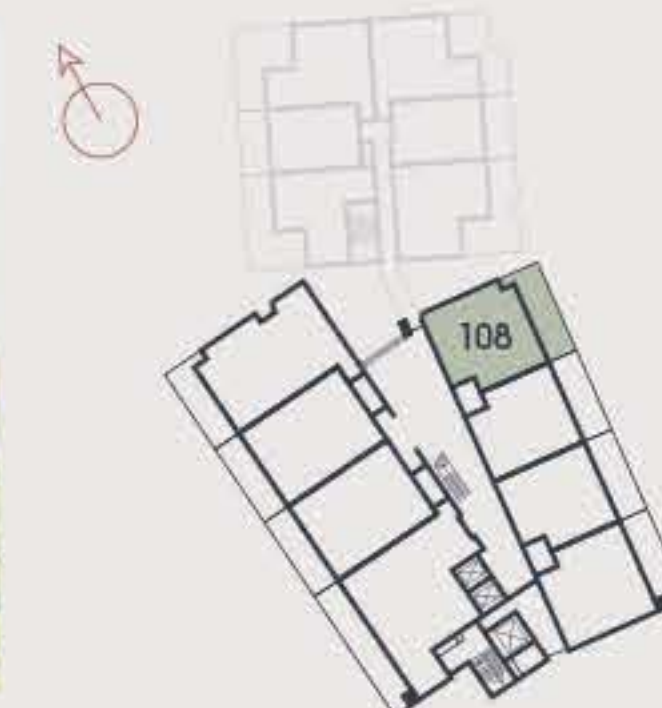
Floorplans shown are for approximate measurements only. Exact layouts and sizes may vary. All measurements may vary within a tolerance of 5%. The dimensions are not intended to be used for carpet sizes, appliance sizes or items of furniture. Furniture layouts are indicative only. Kitchen layout indicative only. Please ask Sales Consultant for further information. Floorplans have been sized to fit the page, as a result this plan may not be at the same scale as plans on other pages.

TWO BEDROOM APARTMENT

APARTMENT 108

FLOOR: GROUND

TOTAL AREA: 86.8 SQ M 934.5 SQ FT



KITCHEN	2.68M X 2.56M	8'10" X 8'5"
LIVING/DINING	7.04M X 4.07M	23'1" X 13'6"
BEDROOM 1	5.63M X 3.50M	18'6" X 11'6"
BEDROOM 2	5.85M X 2.64M	19'2" X 8'8"
TERRACE	28.2 SQ M	303 SQ FT

KEY

◄►	Measurement Points	SW	Space for Wardrobe
W	Wardrobe	U	Utility Cupboard
C	Cupboard	SWM	Space for Washing Machine

Floorplans shown are for approximate measurements only. Exact layouts and sizes may vary. All measurements may vary within a tolerance of 5%. The dimensions are not intended to be used for carpet sizes, appliance sizes or items of furniture. Furniture layouts are indicative only. Kitchen layout indicative only. Please ask Sales Consultant for further information. Floorplans have been sized to fit the page, as a result this plan may not be at the same scale as plans on other pages.

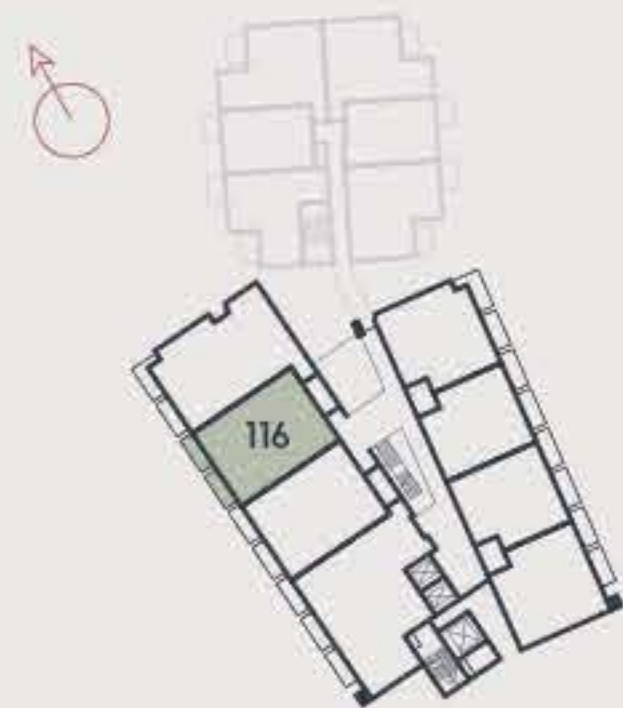
NICHOLSON HOUSE

TWO BEDROOM APARTMENT

APARTMENT 116

FLOOR: FIRST

TOTAL AREA: 104.9 SQ M 1,129.4 SQ FT



KITCHEN/LIVING/DINING	12.06M X 3.53M	39'7" X 11'7"
BEDROOM 1	9.04M X 2.75M	29'8" X 9'0"
BEDROOM 2	6.17M X 2.82M	20'3" X 9'3"
BALCONY 1	6.4 SQ M	68.8 SQ FT
BALCONY 2	6.4 SQ M	68.8 SQ FT

KEY

◀▶	Measurement Points	SW	Space for Wardrobe
W	Wardrobe	U	Utility Cupboard
C	Cupboard	SWM	Space for Washing Machine

Floorplans shown are for approximate measurements only. Exact layouts and sizes may vary. All measurements may vary within a tolerance of 5%. The dimensions are not intended to be used for carpet sizes, appliance sizes or items of furniture. Furniture layouts are indicative only. Kitchen layout indicative only. Please ask Sales Consultant for further information. Floorplans have been sized to fit the page, as a result this plan may not be at the same scale as plans on other pages.

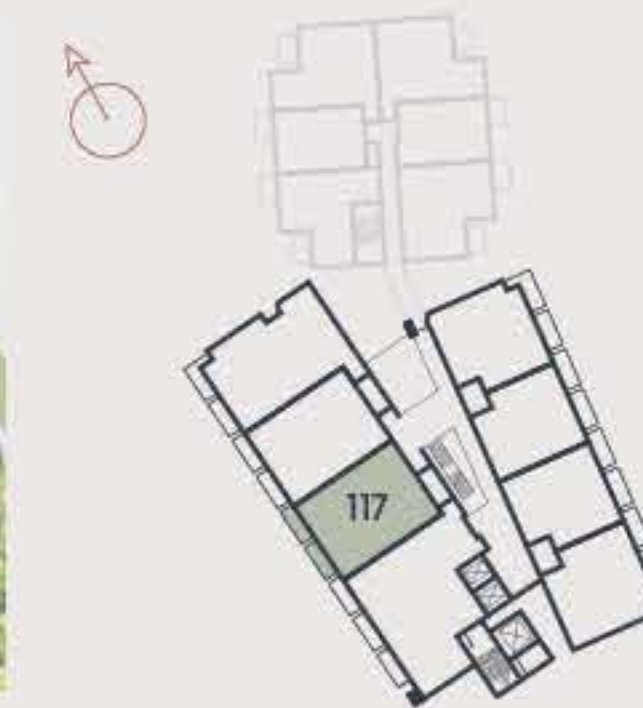
OAKHILL

TWO BEDROOM APARTMENT

APARTMENT 117

FLOOR: FIRST

TOTAL AREA: 106.5 SQ M 1,146.4 SQ FT



KITCHEN/LIVING/DINING	12.08M X 3.65M	39'7" X 12'0"
BEDROOM 1	9.05M X 2.78M	29'8" X 9'1"
BEDROOM 2	6.19M X 2.80M	20'4" X 9'2"
BALCONY 1	6.4 SQ M	68.8 SQ FT
BALCONY 2	6.4 SQ M	68.8 SQ FT

KEY

◀▶	Measurement Points	SW	Space for Wardrobe
W	Wardrobe	U	Utility Cupboard
C	Cupboard	SWM	Space for Washing Machine

Floorplans shown are for approximate measurements only. Exact layouts and sizes may vary. All measurements may vary within a tolerance of 5%. The dimensions are not intended to be used for carpet sizes, appliance sizes or items of furniture. Furniture layouts are indicative only. Kitchen layout indicative only. Please ask Sales Consultant for further information. Floorplans have been sized to fit the page, as a result this plan may not be at the same scale as plans on other pages.

TWO BEDROOM APARTMENT

APARTMENT 119

FLOOR: FIRST

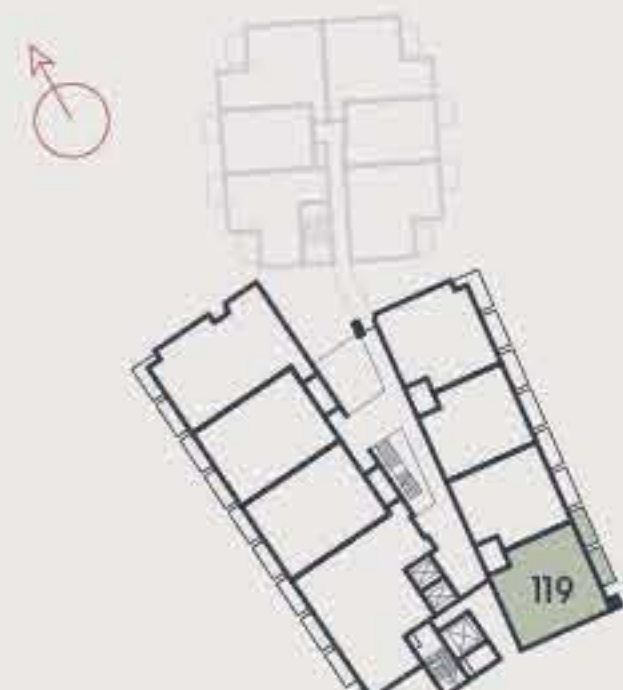
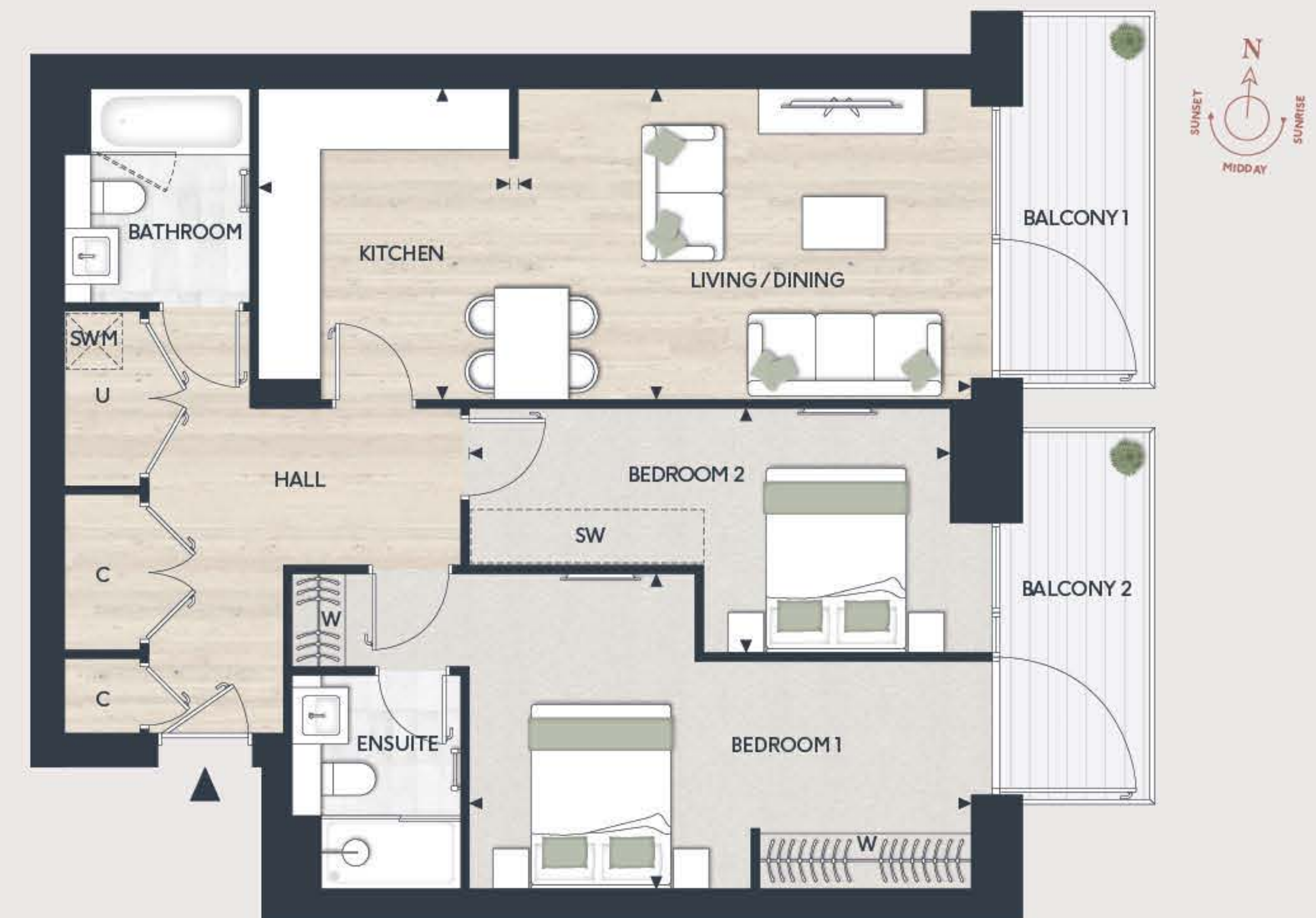
TOTAL AREA: 91 SQ M 979.7 SQ FT

TWO BEDROOM APARTMENT

APARTMENT 120

FLOOR: FIRST

TOTAL AREA: 81.6 SQ M 877.8 SQ FT



KITCHEN/LIVING/DINING	7.55M X 3.92M	24'9" X 12'10"
BEDROOM 1	7.61M X 2.75M	25'0" X 9'0"
BEDROOM 2	5.21M X 2.75M	17'1" X 9'0"
BALCONY 1	6.4 SQ M	68 SQ FT
BALCONY 2	6.4 SQ M	68 SQ FT

KEY

◀▶	Measurement Points	SW	Space for Wardrobe
W	Wardrobe	U	Utility Cupboard
C	Cupboard	SWM	Space for Washing Machine



KITCHEN	2.70M X 3.35M	8'10" X 11'0"
LIVING/DINING	5.09M X 3.35M	16'9" X 11'0"
BEDROOM 1	5.63M X 3.40M	18'9" X 11'2"
BEDROOM 2	5.18M X 2.63M	17'0" X 8'8"
BALCONY 1	6.4 SQ M	68 SQ FT
BALCONY 2	6.4 SQ M	68 SQ FT

KEY

◀▶	Measurement Points	SW	Space for Wardrobe
W	Wardrobe	U	Utility Cupboard
C	Cupboard	SWM	Space for Washing Machine

Floorplans shown are for approximate measurements only. Exact layouts and sizes may vary. All measurements may vary within a tolerance of 5%. The dimensions are not intended to be used for carpet sizes, appliance sizes or items of furniture. Furniture layouts are indicative only. Kitchen layout indicative only. Please ask Sales Consultant for further information. Floorplans have been sized to fit the page, as a result this plan may not be at the same scale as plans on other pages.

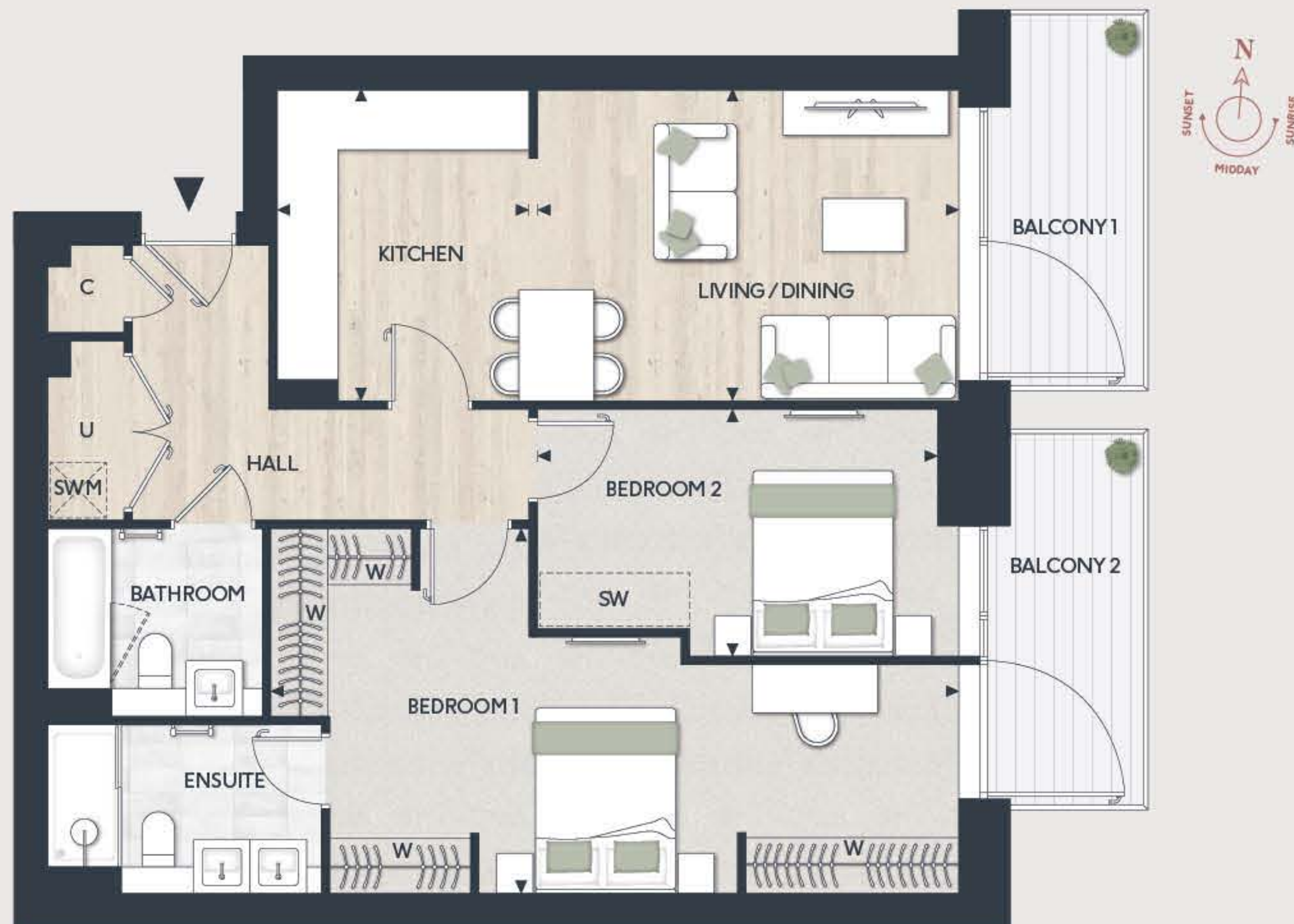
Floorplans shown are for approximate measurements only. Exact layouts and sizes may vary. All measurements may vary within a tolerance of 5%. The dimensions are not intended to be used for carpet sizes, appliance sizes or items of furniture. Furniture layouts are indicative only. Kitchen layout indicative only. Please ask Sales Consultant for further information. Floorplans have been sized to fit the page, as a result this plan may not be at the same scale as plans on other pages.

TWO BEDROOM APARTMENT

APARTMENT 121

FLOOR: FIRST

TOTAL AREA: 81.5 SQ M 877.6 SQ FT



KITCHEN	2.70M X 3.13M	8'10" X 10'3"
LIVING/DINING	4.74M X 3.34M	15'7" X 11'0"
BEDROOM 1	7.60M X 3.92M	24'11" X 12'10"
BEDROOM 2	4.74M X 2.65M	15'7" X 8'8"
BALCONY 1	6.4 SQ M	68 SQ FT
BALCONY 2	6.4 SQ M	68 SQ FT

KEY

◀▶	Measurement Points	SW	Space for Wardrobe
W	Wardrobe	U	Utility Cupboard
C	Cupboard	SWM	Space for Washing Machine

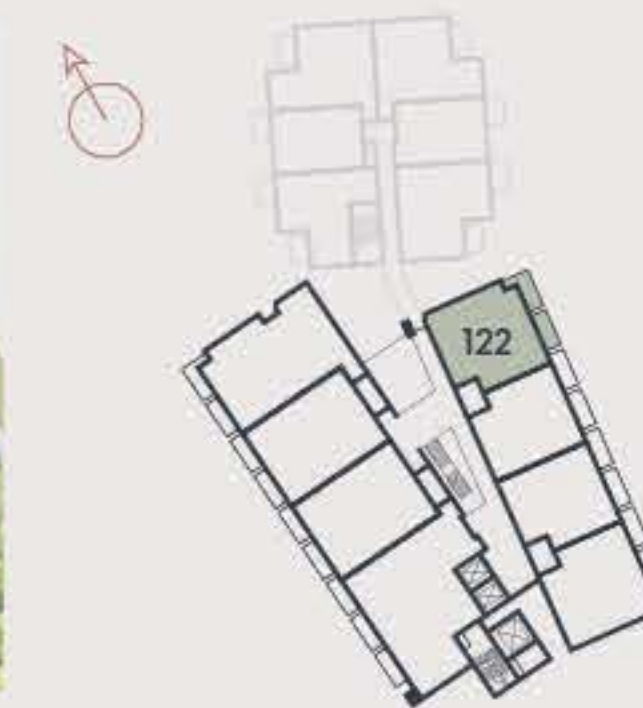
Floorplans shown are for approximate measurements only. Exact layouts and sizes may vary. All measurements may vary within a tolerance of 5%. The dimensions are not intended to be used for carpet sizes, appliance sizes or items of furniture. Furniture layouts are indicative only. Kitchen layout indicative only. Please ask Sales Consultant for further information. Floorplans have been sized to fit the page, as a result this plan may not be at the same scale as plans on other pages.

TWO BEDROOM APARTMENT

APARTMENT 122

FLOOR: FIRST

TOTAL AREA: 86.8 SQ M 934.5 SQ FT



KITCHEN	2.68M X 2.56M	8'10" X 8'5"
LIVING/DINING	7.04M X 4.07M	23'1" X 13'6"
BEDROOM 1	5.63M X 3.50M	18'6" X 11'6"
BEDROOM 2	5.85M X 2.64M	19'2" X 8'8"
BALCONY 1	8.0 SQ M	86 SQ FT
BALCONY 2	6.4 SQ M	68 SQ FT

KEY

◀▶	Measurement Points	SW	Space for Wardrobe
W	Wardrobe	U	Utility Cupboard
C	Cupboard	SWM	Space for Washing Machine

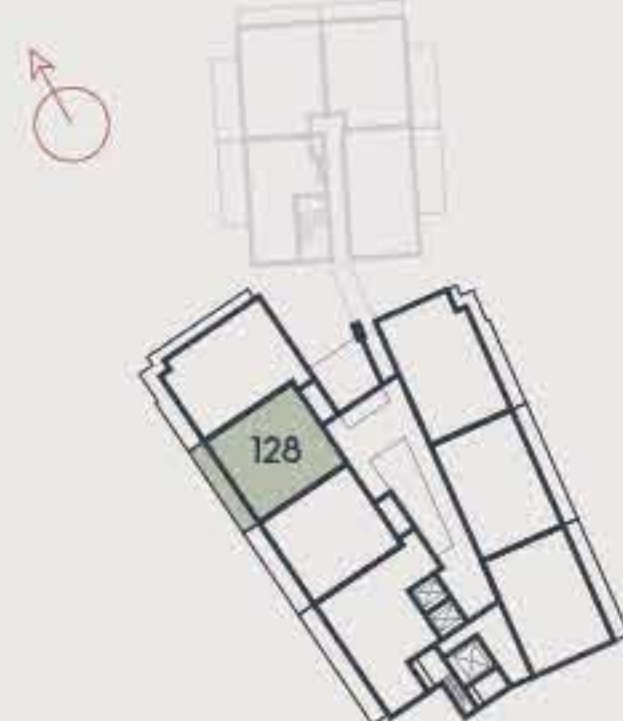
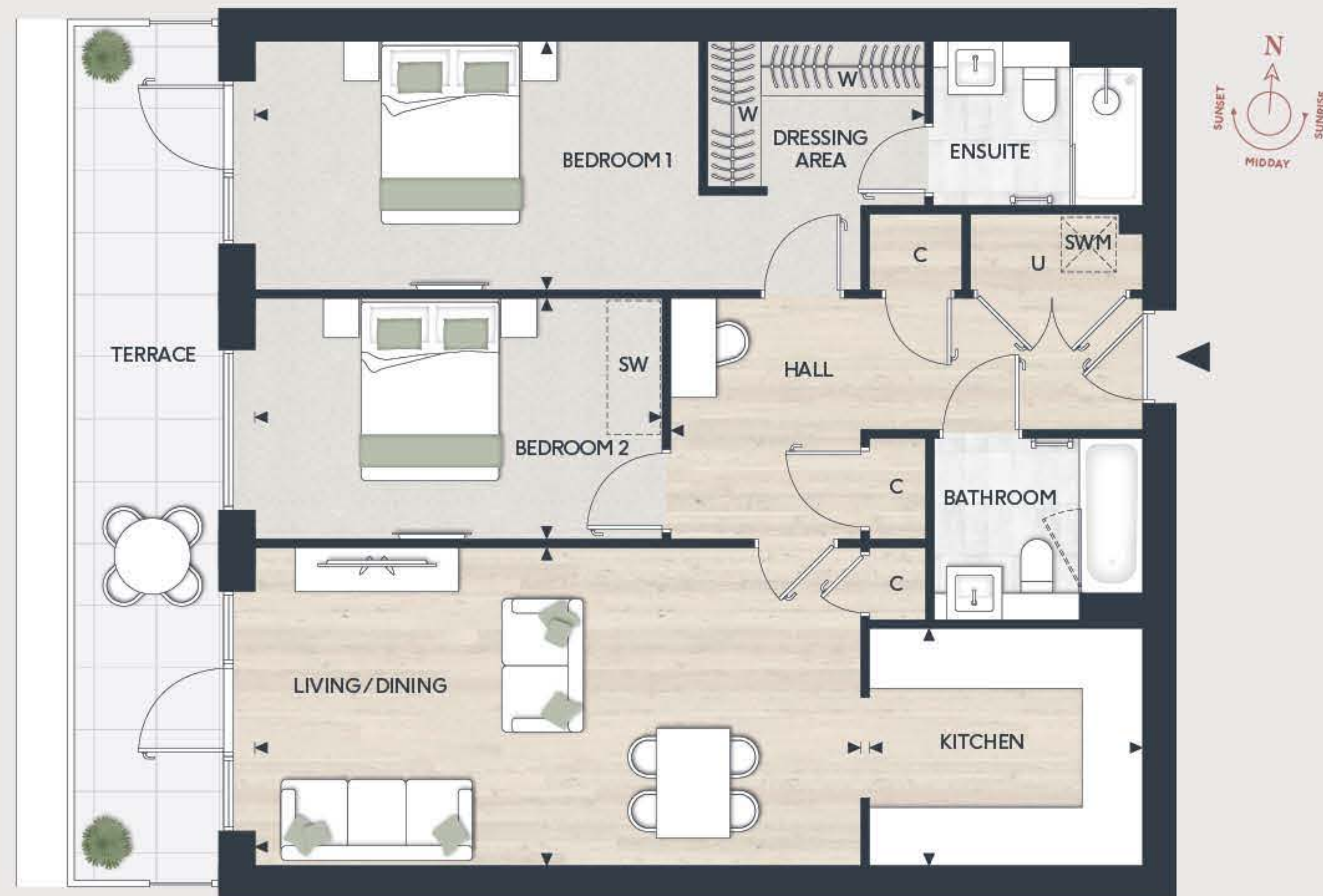
Floorplans shown are for approximate measurements only. Exact layouts and sizes may vary. All measurements may vary within a tolerance of 5%. The dimensions are not intended to be used for carpet sizes, appliance sizes or items of furniture. Furniture layouts are indicative only. Kitchen layout indicative only. Please ask Sales Consultant for further information. Floorplans have been sized to fit the page, as a result this plan may not be at the same scale as plans on other pages.

TWO BEDROOM APARTMENT

APARTMENT 128

FLOOR: SECOND

TOTAL AREA: 91.1 SQ M 980.6 SQ FT



KITCHEN	3.01M X 2.62M	9'11" X 8'7"
LIVING/DINING	6.94M X 3.52M	22'9" X 11'7"
BEDROOM 1	7.41M X 2.75M	25'1" X 9'0"
BEDROOM 2	4.74M X 2.65M	15'7" X 8'8"
TERRACE	15.3 SQ M	164.6 SQ FT

KEY

◀▶	Measurement Points	SW	Space for Wardrobe
W	Wardrobe	U	Utility Cupboard
C	Cupboard	SWM	Space for Washing Machine

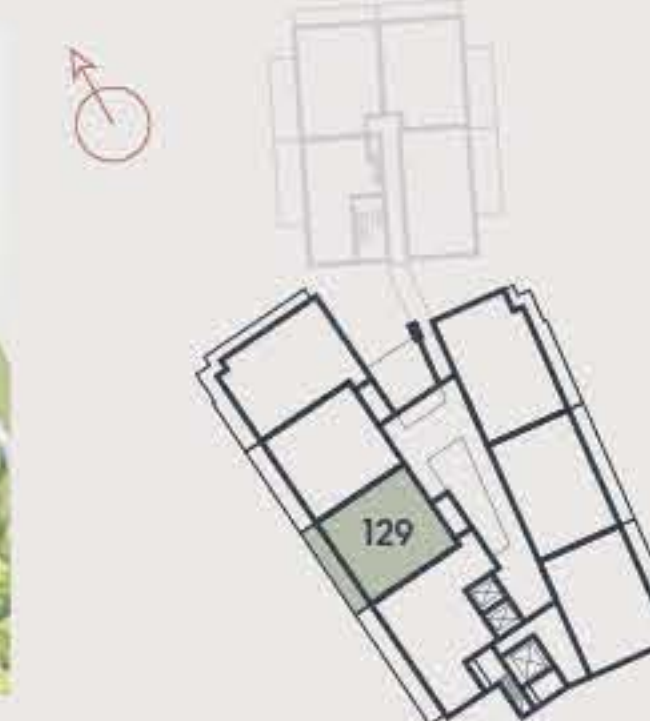
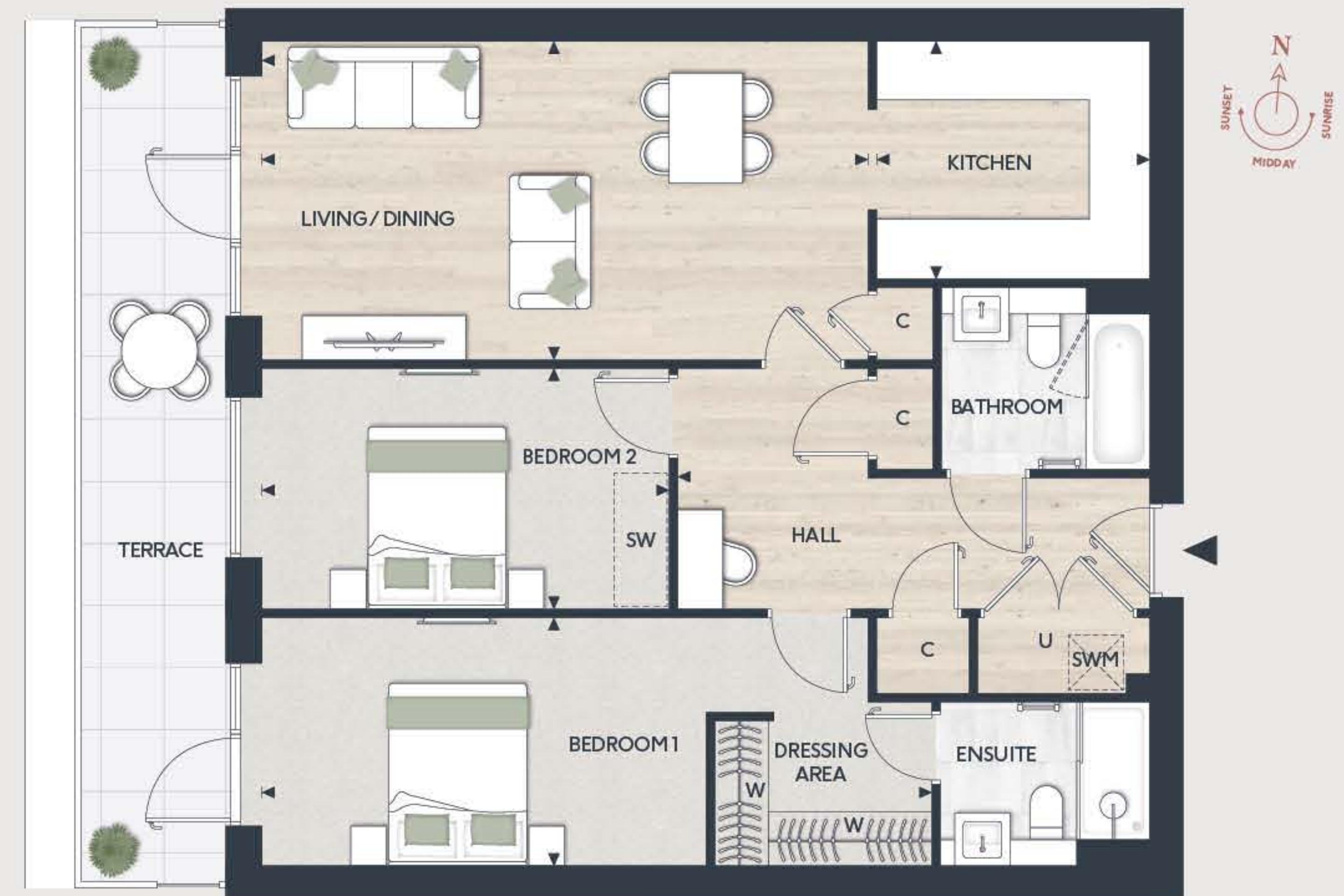
Floorplans shown are for approximate measurements only. Exact layouts and sizes may vary. All measurements may vary within a tolerance of 5%. The dimensions are not intended to be used for carpet sizes, appliance sizes or items of furniture. Furniture layouts are indicative only. Kitchen layout indicative only. Please ask Sales Consultant for further information. Floorplans have been sized to fit the page, as a result this plan may not be at the same scale as plans on other pages.

TWO BEDROOM APARTMENT

APARTMENT 129

FLOOR: SECOND

TOTAL AREA: 91.1 SQ M 980.6 SQ FT



KITCHEN	3.01M X 2.62M	9'11" X 8'7"
LIVING/DINING	6.94M X 3.52M	22'9" X 11'7"
BEDROOM 1	7.41M X 2.75M	25'1" X 9'0"
BEDROOM 2	4.74M X 2.65M	15'7" X 8'8"
TERRACE	15.3 SQ M	164.6 SQ FT

KEY

◀▶	Measurement Points	SW	Space for Wardrobe
W	Wardrobe	U	Utility Cupboard
C	Cupboard	SWM	Space for Washing Machine

Floorplans shown are for approximate measurements only. Exact layouts and sizes may vary. All measurements may vary within a tolerance of 5%. The dimensions are not intended to be used for carpet sizes, appliance sizes or items of furniture. Furniture layouts are indicative only. Kitchen layout indicative only. Please ask Sales Consultant for further information. Floorplans have been sized to fit the page, as a result this plan may not be at the same scale as plans on other pages.

TWO BEDROOM SPECIFICATION

KITCHEN

- Flat panel cabinet doors in a matt lacquer finish
- Framed fluted glass wall cabinets above (or near) to sink
- Soft-close cabinet doors and drawers
- Handles to base and tall cabinets
- 20mm Silestone worktops
- Feature Silestone step detail to hob run, including concealed ledge for condiments, and glass splashback above. Glass splashback and/or Silestone upstand to remaining areas
- LED strip lighting to underside of wall cabinets
- Undermount sink with stylish matt black mixer tap
- Integrated waste separation recycling bins
- Siemens built-in single oven
- Siemens built-in microwave oven with hot air
- Siemens 4-zone induction hob
- Elica concealed extractor above induction hob
- Bosch fully integrated dishwasher
- Built-in fridge freezer

UTILITY CUPBOARD

- Space and plumbing for washing machine or washer dryer

BATHROOM

- Bespoke cabinetry to bathroom including:
 - Wall mounted mirrors with feature framing and contemporary wall lights to washbasin wall
 - Drawer unit(s) with soft-closing function below washbasin(s)
 - Bath panel with removable front fascia and feature groove detail
- Silestone vanity top
- Roca over countertop washbasin(s)
- Luxury steel bath with glass screen, bath filler waste and overflow, and slide rail shower kit
- Stylish brushed brass brassware including:
 - Single lever basin mixer(s)
 - Concealed thermostatic bath/shower valves
 - Robe hooks
 - Paper holder
- Dual flush WC with concealed cistern, soft-close seat and cover
- Heated brushed brass towel radiator
- Contemporary floor tiles
- Full height wall tiling to shower enclosure and walls above bath. Bespoke cabinetry to washbasin and WC wall. Tiled skirting and paint finish to remaining walls

EN SUITE

- Bespoke cabinetry to en suite including:
 - Wall mounted mirrors with feature framing and contemporary wall lights to washbasin wall
 - Drawer unit(s) with soft closing function below washbasin(s)
- Silestone vanity top
- Roca over countertop washbasin(s)
- Shower enclosure with ceiling mounted shower head and hand-held shower
- Stylish brushed brass brassware including:
 - Single lever basin mixer(s)
 - Concealed thermostatic bath/shower valves
 - Robe hooks
 - Paper holder
- Dual flush WC with concealed cistern, soft-close seat and cover
- Heated brushed brass towel radiator
- Contemporary floor tiles
- Full height wall tiling to shower enclosure and walls above bath. Bespoke cabinetry to washbasin and WC wall. Tiled skirting and paint finish to remaining walls

NICHOLSON HOUSE



INTERIOR FINISHES

- White painted 1 panel internal doors with feature groove detail
- Stylish satin nickel lever handles
- White painted skirting boards and architraves with stepped chamfer profile
- Wire shelving system to linen cupboard
- Amtico wood-effect vinyl flooring laid in stripwood pattern, to all areas except bedrooms, bathroom and ensuite
- Luxury carpet fitted to bedrooms
- Bespoke fitted wardrobes with full height hinged doors to bedroom 1. Internal fittings to include shelf, hanging rail and mirror to inside of hinged door. LED strip light installed to underside of shelf

HOME ENTERTAINMENT

- Television point with wiring for Sky Q (subject to future purchaser subscription) provided to living area and bedrooms
- Telephone point provided to hall cupboard and living area
- Openreach fibre optic broadband connectivity is available in every property, with convenient data points around the apartment

ELECTRICAL & LIGHTING

- LED downlights to hallway, kitchen, living/dining area, WC, bathroom and ensuite
- Pendant lights to bedrooms
- Dimmer switch to living/dining area
- Main 'on/off' light switch adjacent to front door
- 2-way light switch to bedroom 1
- Stainless steel sockets above kitchen worktops
- USB socket to kitchen, living area, bedrooms 1 and 2
- Shaver socket to bathroom and ensuite

HEATING & HOT WATER

- Electric heating and hot water system
- Mechanical ventilation system

EXTERNAL

- Allocated parking space(s)

COMMUNAL AREAS

- Lift access to all floors
- Cycle storage
- Bin storage

SECURITY & PEACE OF MIND

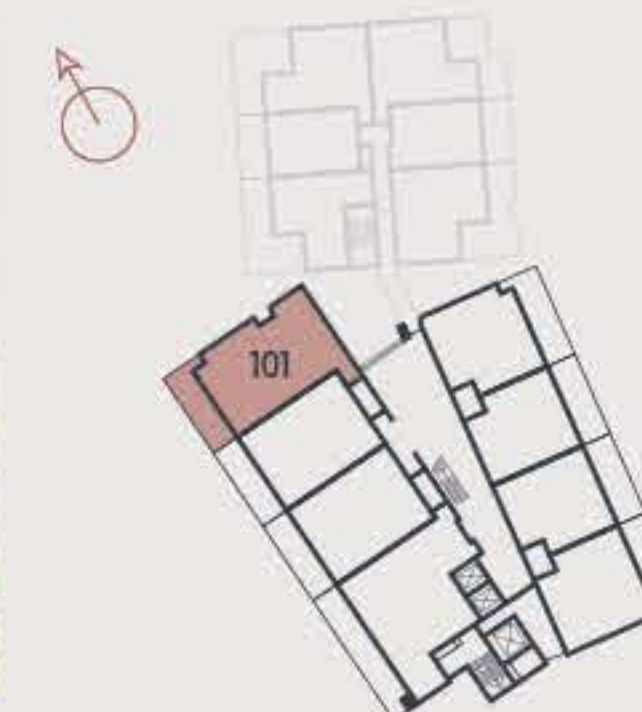
- 10-year Premier guarantee
- Mains fed smoke/heat detectors
- Door guard and spy hole to apartment entrance door
- Video entry system linked to main entrance doors
- 2-year Berkeley warranty with our dedicated customer service team

THREE BEDROOM APARTMENT

APARTMENT 101

FLOOR: GROUND

TOTAL AREA: 117.9 SQ M 1,268.9 SQ FT



KITCHEN/LIVING/DINING	8.07M X 5.13M	26'6" X 16'10"
BEDROOM 1	5.60M X 3.50M	18'5" X 11'6"
BEDROOM 2	2.85M X 5.13M	9'4" X 16'10"
BEDROOM 3	2.65M X 4.12M	8'9" X 13'6"
TERRACE	27.8 SQ M	299.2 SQ FT

KEY

◀▶	Measurement Points	SW	Space for Wardrobe
W	Wardrobe	U	Utility Cupboard
C	Cupboard	SWM	Space for Washing Machine

Your attention is drawn to the fact that in rare circumstances it may not be possible to obtain the exact products or materials referred to in the specification. Berkeley reserves the right to alter, amend or update the specification, which may include changes in the colour, material and/or brand specified. In such cases, a similar alternative will be provided. Berkeley reserves the right to make these changes as required.

Floorplans shown are for approximate measurements only. Exact layouts and sizes may vary. All measurements may vary within a tolerance of 5%. The dimensions are not intended to be used for carpet sizes, appliance sizes or items of furniture. Furniture layouts are indicative only. Kitchen layout indicative only. Please ask Sales Consultant for further information. Floorplans have been sized to fit the page, as a result this plan may not be at the same scale as plans on other pages.

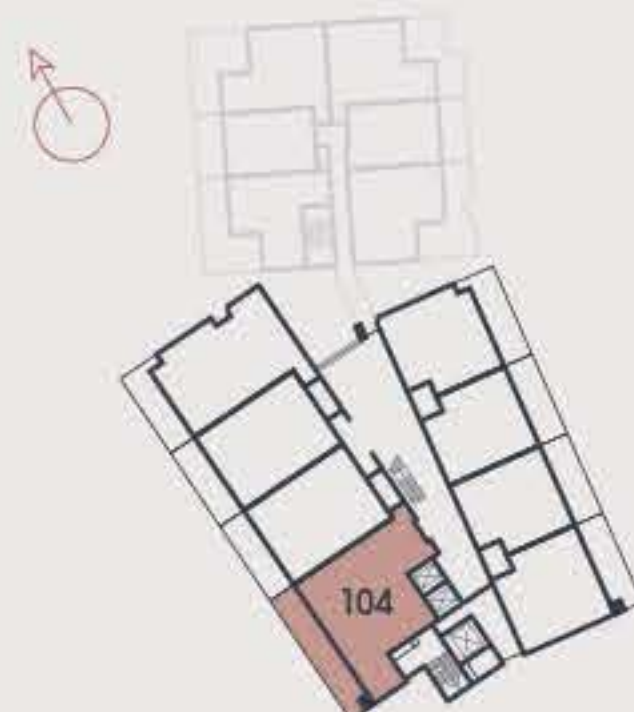
NICHOLSON HOUSE

THREE BEDROOM APARTMENT

APARTMENT 104

FLOOR: GROUND

TOTAL AREA: 140 SQ M 1,506.8 SQ FT



KITCHEN/DINING	5.74M X 3.51M	18'10" X 11'6"
LIVING	3.56M X 4.49M	11'8" X 14'9"
BEDROOM 1	4.67M X 3.61M	15'4" X 11'10"
BEDROOM 2	5.77M X 2.62M	18'11" X 8'7"
BEDROOM 3	4.09M X 2.71M	13'5" X 8'11"
TERRACE	40.0 SQ M	430.5 SQ FT

KEY			
▶▶	Measurement Points	SW	Space for Wardrobe
W	Wardrobe	U	Utility Cupboard
C	Cupboard	SWM	Space for Washing Machine

Floorplans shown are for approximate measurements only. Exact layouts and sizes may vary. All measurements may vary within a tolerance of 5%. The dimensions are not intended to be used for carpet sizes, appliance sizes or items of furniture. Furniture layouts are indicative only. Kitchen layout indicative only. Please ask Sales Consultant for further information. Floorplans have been sized to fit the page, as a result this plan may not be at the same scale as plans on other pages.

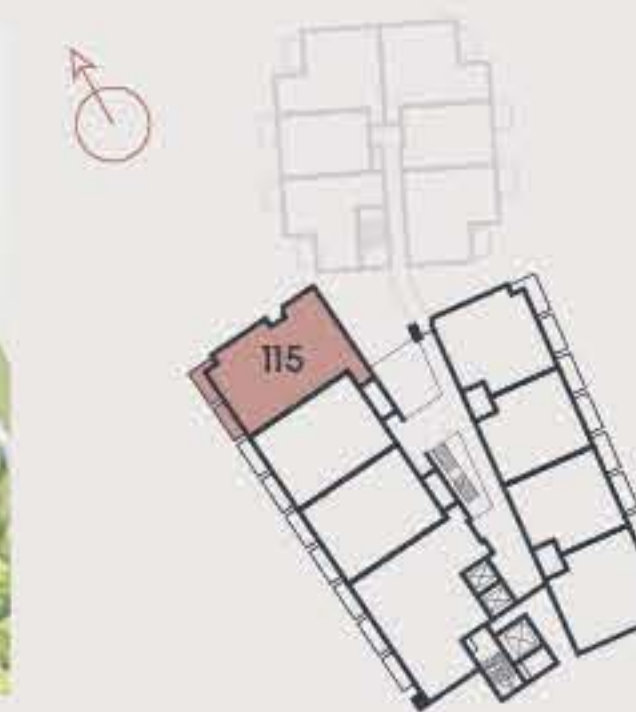
OAKHILL

THREE BEDROOM APARTMENT

APARTMENT 115

FLOOR: FIRST

TOTAL AREA: 117.9 SQ M 1,268.9 SQ FT



KITCHEN/LIVING/DINING	8.07M X 5.13M	26'6" X 16'10"
BEDROOM 1	5.60M X 3.50M	18'5" X 11'6"
BEDROOM 2	2.85M X 5.13M	9'4" X 16'10"
BEDROOM 3	2.65M X 4.12M	8'9" X 13'6"
BALCONY 1	8 SQ M	86.1 SQ FT
BALCONY 2	6.4 SQ M	68.8 SQ FT

KEY			
▶▶	Measurement Points	SW	Space for Wardrobe
W	Wardrobe	U	Utility Cupboard
C	Cupboard	SWM	Space for Washing Machine

Floorplans shown are for approximate measurements only. Exact layouts and sizes may vary. All measurements may vary within a tolerance of 5%. The dimensions are not intended to be used for carpet sizes, appliance sizes or items of furniture. Furniture layouts are indicative only. Kitchen layout indicative only. Please ask Sales Consultant for further information. Floorplans have been sized to fit the page, as a result this plan may not be at the same scale as plans on other pages.

NICHOLSON HOUSE

THREE BEDROOM APARTMENT

APARTMENT 118

FLOOR: FIRST

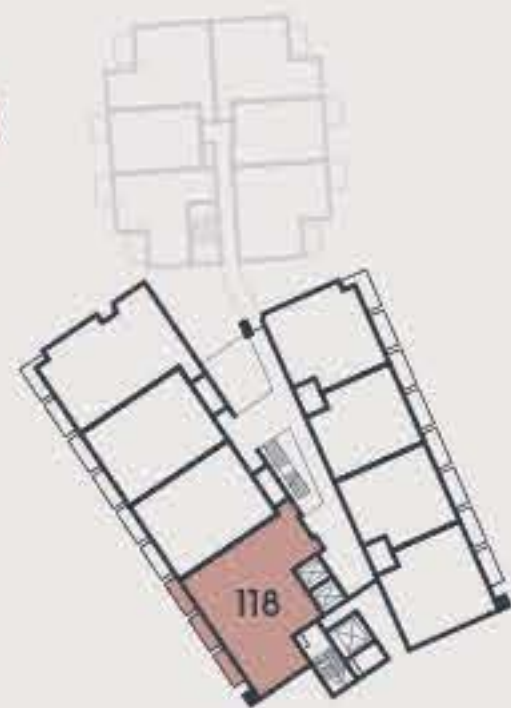
TOTAL AREA: 150.4 SQ M 1,618.6 SQ FT



KITCHEN	5.75M X 3.52M	18'10" X 11'7"
LIVING/DINING	6.29M X 5.16M	20'8" X 16'11"
BEDROOM 1	4.64M X 3.54M	15'3" X 11'8"
BEDROOM 2	5.70M X 2.66M	18'8" X 8'9"
BEDROOM 3	5.70M X 2.67M	18'8" X 8'9"
BALCONY 1	6.4 SQ M	68.8 SQ FT
BALCONY 2	6.4 SQ M	68.8 SQ FT
BALCONY 3	6.4 SQ M	68.8 SQ FT

KEY

◀▶	Measurement Points	SW	Space for Wardrobe
W	Wardrobe	U	Utility Cupboard
C	Cupboard	SWM	Space for Washing Machine



Floorplans shown are for approximate measurements only. Exact layouts and sizes may vary. All measurements may vary within a tolerance of 5%. The dimensions are not intended to be used for carpet sizes, appliance sizes or items of furniture. Furniture layouts are indicative only. Kitchen layout indicative only. Please ask Sales Consultant for further information. Floorplans have been sized to fit the page, as a result this plan may not be at the same scale as plans on other pages.

OAKHILL

THREE BEDROOM APARTMENT

APARTMENT 127

FLOOR: SECOND

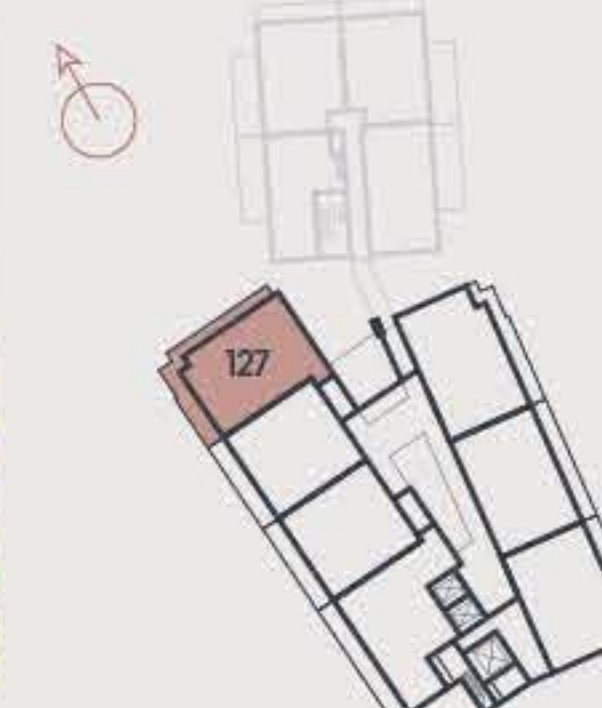
TOTAL AREA: 98.9 SQ M 1,064.6 SQ FT



KITCHEN/LIVING/DINING	6.61M X 5.67M	21'8" X 18'7"
BEDROOM 1	5.65M X 2.75M	18'7" X 9'0"
BEDROOM 2	2.75M X 5.27M	9'0" X 17'3"
BEDROOM 3	2.35M X 5.27M	7'8" X 17'3"
TERRACE	26.6 SQ M	286.3 SQ FT

KEY

◀▶	Measurement Points	SW	Space for Wardrobe
W	Wardrobe	U	Utility Cupboard
C	Cupboard	SWM	Space for Washing Machine



Floorplans shown are for approximate measurements only. Exact layouts and sizes may vary. All measurements may vary within a tolerance of 5%. The dimensions are not intended to be used for carpet sizes, appliance sizes or items of furniture. Furniture layouts are indicative only. Kitchen layout indicative only. Please ask Sales Consultant for further information. Floorplans have been sized to fit the page, as a result this plan may not be at the same scale as plans on other pages.

THREE BEDROOM APARTMENT

APARTMENT 130

FLOOR: SECOND

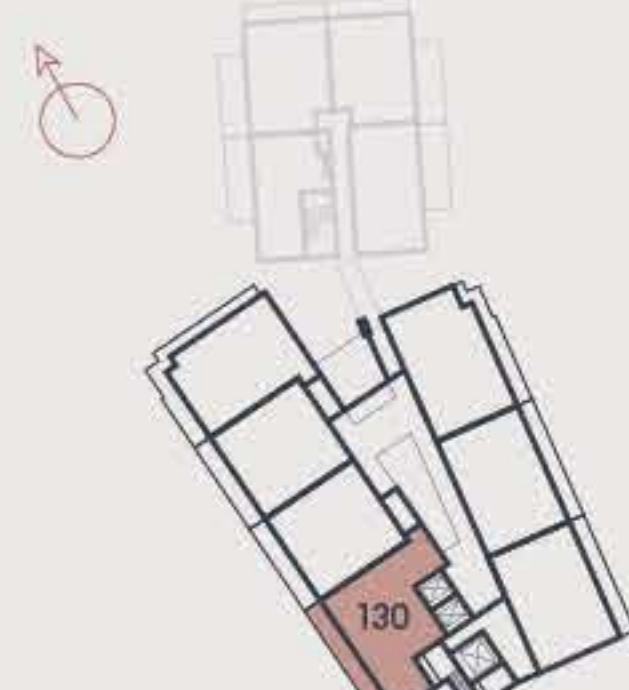
TOTAL AREA: 107.4 SQ M 1,155.7 SQ FT

THREE BEDROOM APARTMENT

APARTMENT 131

FLOOR: SECOND

TOTAL AREA: 99.7 SQ M 1,073.4 SQ FT

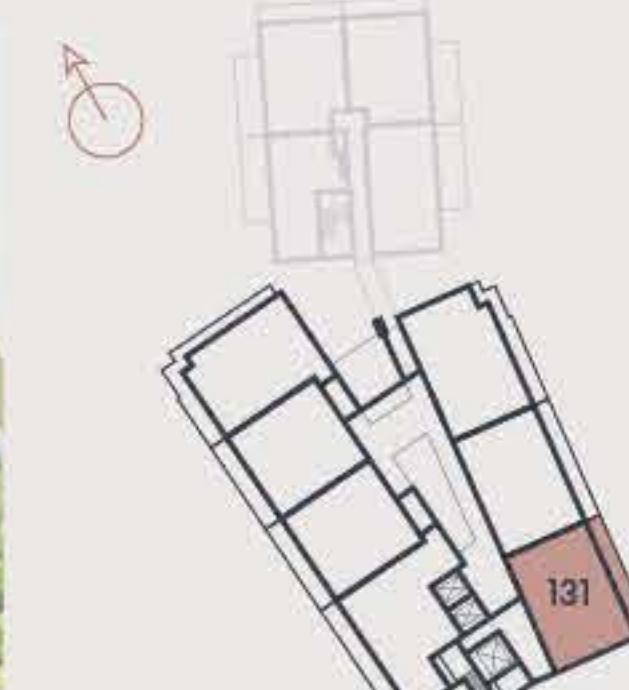


KITCHEN/DINING	4.41M X 3.79M	14'6" X 12'5"
LIVING	4.39M X 4.70M	14'5" X 15'5"
BEDROOM 1	6.58M X 2.75M	21'7" X 9'0"
BEDROOM 2	3.73M X 2.75M	12'3" X 9'0"
BEDROOM 3	3.73M X 2.30M	12'3" X 7'7"
TERRACE	20.4 SQ M	219.5 SQ FT

KEY

◀▶	Measurement Points	SW	Space for Wardrobe
W	Wardrobe	U	Utility Cupboard
C	Cupboard	SWM	Space for Washing Machine

Floorplans shown are for approximate measurements only. Exact layouts and sizes may vary. All measurements may vary within a tolerance of 5%. The dimensions are not intended to be used for carpet sizes, appliance sizes or items of furniture. Furniture layouts are indicative only. Kitchen layout indicative only. Please ask Sales Consultant for further information. Floorplans have been sized to fit the page, as a result this plan may not be at the same scale as plans on other pages.



KITCHEN	2.30M X 3.90M	7'7" X 12'10"
LIVING/DINING	6.10M X 3.90M	20'0" X 12'10"
BEDROOM 1	6.10M X 2.77M	20'0" X 9'0"
BEDROOM 2	4.50M X 2.71M	14'9" X 8'11"
BEDROOM 3	4.50M X 2.16M	14'9" X 7'1"
TERRACE	15.8 SQ M	170 SQ FT

KEY

◀▶	Measurement Points	SW	Space for Wardrobe
W	Wardrobe	U	Utility Cupboard
C	Cupboard	SWM	Space for Washing Machine

Floorplans shown are for approximate measurements only. Exact layouts and sizes may vary. All measurements may vary within a tolerance of 5%. The dimensions are not intended to be used for carpet sizes, appliance sizes or items of furniture. Furniture layouts are indicative only. Kitchen layout indicative only. Please ask Sales Consultant for further information. Floorplans have been sized to fit the page, as a result this plan may not be at the same scale as plans on other pages.

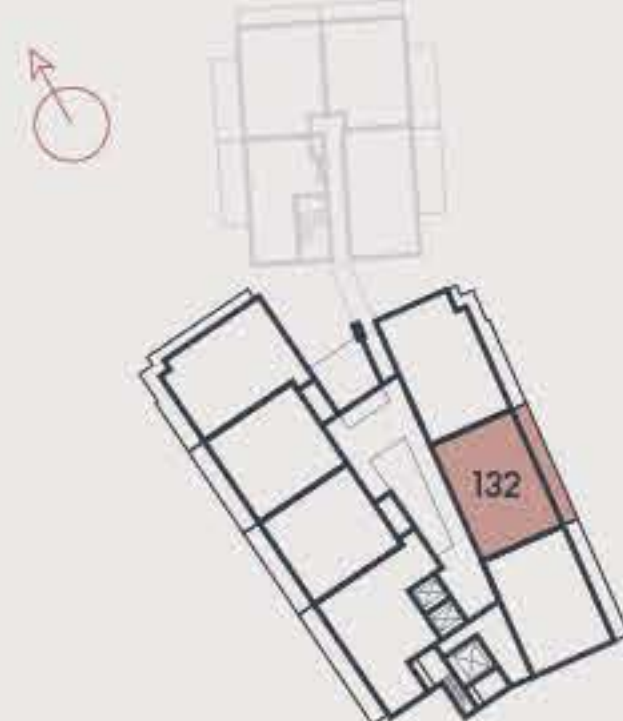
NICHOLSON HOUSE

THREE BEDROOM APARTMENT

APARTMENT 132

FLOOR: SECOND

TOTAL AREA: 99.7 SQ M 1,073.4 SQ FT



KITCHEN	2.30M X 3.90M	7'7" X 12'10"
LIVING/DINING	6.10M X 3.90M	20'0" X 12'10"
BEDROOM 1	6.10M X 2.77M	20'0" X 9'0"
BEDROOM 2	4.50M X 2.71M	14'9" X 8'11"
BEDROOM 3	4.50M X 2.16M	14'9" X 7'1"
TERRACE	15.8 SQ M	170 SQ FT

KEY

◀▶	Measurement Points	SW	Space for Wardrobe
W	Wardrobe	U	Utility Cupboard
C	Cupboard	SWM	Space for Washing Machine

Floorplans shown are for approximate measurements only. Exact layouts and sizes may vary. All measurements may vary within a tolerance of 5%. The dimensions are not intended to be used for carpet sizes, appliance sizes or items of furniture. Furniture layouts are indicative only. Kitchen layout indicative only. Please ask Sales Consultant for further information. Floorplans have been sized to fit the page, as a result this plan may not be at the same scale as plans on other pages.

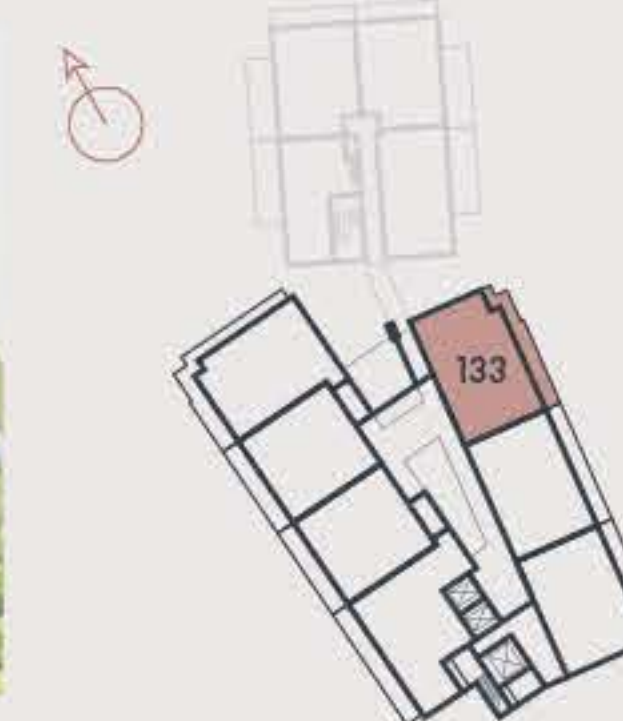
OAKHILL

THREE BEDROOM APARTMENT

APARTMENT 133

FLOOR: SECOND

TOTAL AREA: 103.2 SQ M 1,111 SQ FT



KITCHEN	2.30M X 4.30M	7'7" X 14'1"
LIVING/DINING	5.88M X 4.70M	19'4" X 15'5"
BEDROOM 1	5.86M X 2.77M	19'3" X 9'1"
BEDROOM 2	4.27M X 2.80M	14'0" X 9'2"
BEDROOM 3	4.28M X 2.16M	14'0" X 7'1"
TERRACE	16.5 SQ M	177.6 SQ F

KEY

◀▶	Measurement Points	SW	Space for Wardrobe
W	Wardrobe	U	Utility Cupboard
C	Cupboard	SWM	Space for Washing Machine

Floorplans shown are for approximate measurements only. Exact layouts and sizes may vary. All measurements may vary within a tolerance of 5%. The dimensions are not intended to be used for carpet sizes, appliance sizes or items of furniture. Furniture layouts are indicative only. Kitchen layout indicative only. Please ask Sales Consultant for further information. Floorplans have been sized to fit the page, as a result this plan may not be at the same scale as plans on other pages.

THREE BEDROOM SPECIFICATION

KITCHEN

- Flat panel cabinet doors in a matt lacquer finish
- Framed fluted glass wall cabinets above (or near) to sink
- Soft-close cabinet doors and drawers
- Handles to base and tall cabinets
- 20mm Silestone worktops
- Feature Silestone step detail to hob run, including concealed ledge for condiments, and glass splashback above. Glass splashback and/or Silestone upstand to remaining areas
- LED strip lighting to underside of wall cabinets
- Undermount sink with stylish matt black mixer tap
- Integrated waste separation recycling bins
- Siemens built-in single oven
- Siemens built-in microwave oven with hot air
- Siemens 4-zone induction hob
- Elica concealed extractor above induction hob
- Bosch fully integrated dishwasher
- Built-in fridge freezer

UTILITY CUPBOARD

- Space and plumbing for washing machine or washer dryer

BATHROOM

- Bespoke cabinetry to bathroom including:
 - Wall mounted mirrors with feature framing and contemporary wall lights to washbasin wall
 - Drawer unit(s) with soft-closing function below washbasin(s)
 - Bath panel with removable front fascia and feature groove detail
- Silestone vanity top
- Roca over countertop washbasin(s)
- Luxury steel bath with glass screen, bath filler waste and overflow, and slide rail shower kit
- Stylish brushed brass brassware including:
 - Single lever basin mixer(s)
 - Concealed thermostatic bath/shower valves
 - Robe hooks
 - Paper holder
- Dual flush WC with concealed cistern, soft-close seat and cover
- Heated brushed brass towel radiator
- Contemporary floor tiles
- Full height wall tiling to shower enclosure and walls above bath. Bespoke cabinetry to washbasin and WC wall. Tiled skirting and paint finish to remaining walls

EN SUITE

- Bespoke cabinetry to en suite including:
 - Wall mounted mirrors with feature framing and contemporary wall lights to washbasin wall
 - Drawer unit(s) with soft closing function below washbasin(s)
- Silestone vanity top
- Roca over countertop washbasin(s)
- Shower enclosure with ceiling mounted shower head and hand-held shower
- Stylish brushed brass brassware including:
 - Single lever basin mixer(s)
 - Concealed thermostatic bath/shower valves
 - Robe hooks
 - Paper holder
- Dual flush WC with concealed cistern, soft-close seat and cover
- Heated brushed brass towel radiator
- Contemporary floor tiles
- Full height wall tiling to shower enclosure and walls above bath. Bespoke cabinetry to washbasin and WC wall. Tiled skirting and paint finish to remaining walls

Your attention is drawn to the fact that in rare circumstances it may not be possible to obtain the exact products or materials referred to in the specification. Berkeley reserves the right to alter, amend or update the specification, which may include changes in the colour, material and/or brand specified. In such cases, a similar alternative will be provided. Berkeley reserves the right to make these changes as required.

INTERIOR FINISHES

- White painted 1 panel internal doors with feature groove detail
- Stylish satin nickel lever handles
- White painted skirting boards and architraves with stepped chamfer profile
- Wire shelving system to linen cupboard
- Amtico wood-effect vinyl flooring laid in stripwood pattern, to all areas except bedrooms, bathroom and ensuite
- Luxury carpet fitted to bedrooms
- Bespoke fitted wardrobes with full height hinged doors to bedroom 1. Internal fittings to include shelf, hanging rail and mirror to inside of hinged door. LED strip light installed to underside of shelf

HOME ENTERTAINMENT

- Television point with wiring for Sky Q (subject to future purchaser subscription) provided to living area and bedrooms
- Telephone point provided to hall cupboard and living area
- Openreach fibre optic broadband connectivity is available in every property, with convenient data points around the apartment

ELECTRICAL & LIGHTING

- LED downlights to hallway, kitchen, living/dining area, WC, bathroom and ensuite
- Pendant lights to bedrooms
- Dimmer switch to living/dining area
- Main 'on/off' light switch adjacent to front door
- 2-way light switch to bedroom 1
- Stainless steel sockets above kitchen worktops
- USB socket to kitchen, living area, bedrooms 1 and 2
- Shaver socket to bathroom and ensuite

HEATING & HOT WATER

- Electric heating and hot water system
- Mechanical ventilation system

EXTERNAL

- Allocated parking space(s)

COMMUNAL AREAS

- Lift access to all floors
- Cycle storage
- Bin storage

SECURITY & PEACE OF MIND

- 10-year Premier guarantee
- Mains fed smoke/heat detectors
- Door guard and spy hole to apartment entrance door
- Video entry system linked to main entrance doors
- 2-year Berkeley warranty with our dedicated customer service team



Photography of the Showhome at Oakhill is indicative only.



Maps not to scale and show approximate positions only.

Oakhill, Sales and Marketing Suite
Tonbridge Road, Hildenborough,
Tonbridge TN11 9EW

For more information please visit our
website or contact our sales team:
oakhill-hildenborough.co.uk
oakhill@berkeleygroup.co.uk
T: 01732 608603



The information in this document is indicative and is intended to act as a guide only as to the finished product. Accordingly, due to Berkeley's policy of continuous improvement, the finished product may vary from the information provided. It may not be possible to provide the exact materials as referred to in the brochure. In such cases a suitable alternative will be provided. Berkeley reserves the right to make these changes as required. These particulars should not be relied upon as statements of fact or representations and applicants must satisfy themselves by inspection or otherwise as to their correctness. This information does not constitute a contract or warranty. The dimensions given on plans are subject to minor variations and are not intended to be used for carpet sizes, appliance sizes or items of furniture. Oakhill is a marketing name and will not necessarily form part of the approved postal address. Applicants are advised to contact Oakhill to ascertain the availability of any particular property.

Berkeley Homes (Eastern Counties) Limited, Registered in England and Wales Number 01454062. Registered Office Berkeley House, 19 Portsmouth Road, Cobham, Surrey, KT11 1JG.
E079/05CA/0125



Berkeley
Designed for life



Proud to be a member of the
Berkeley Group of companies

Berkeley
Designed for life