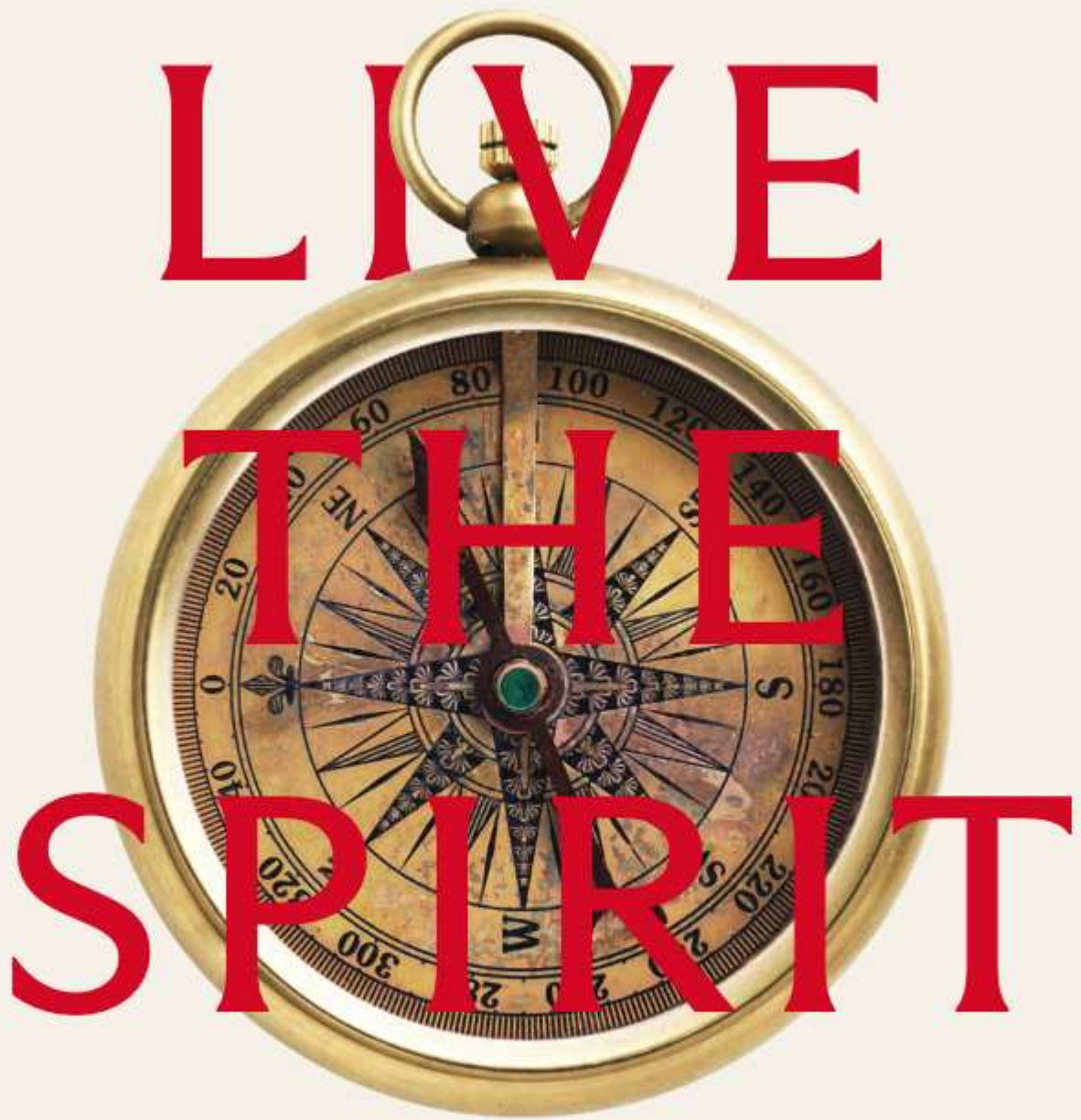
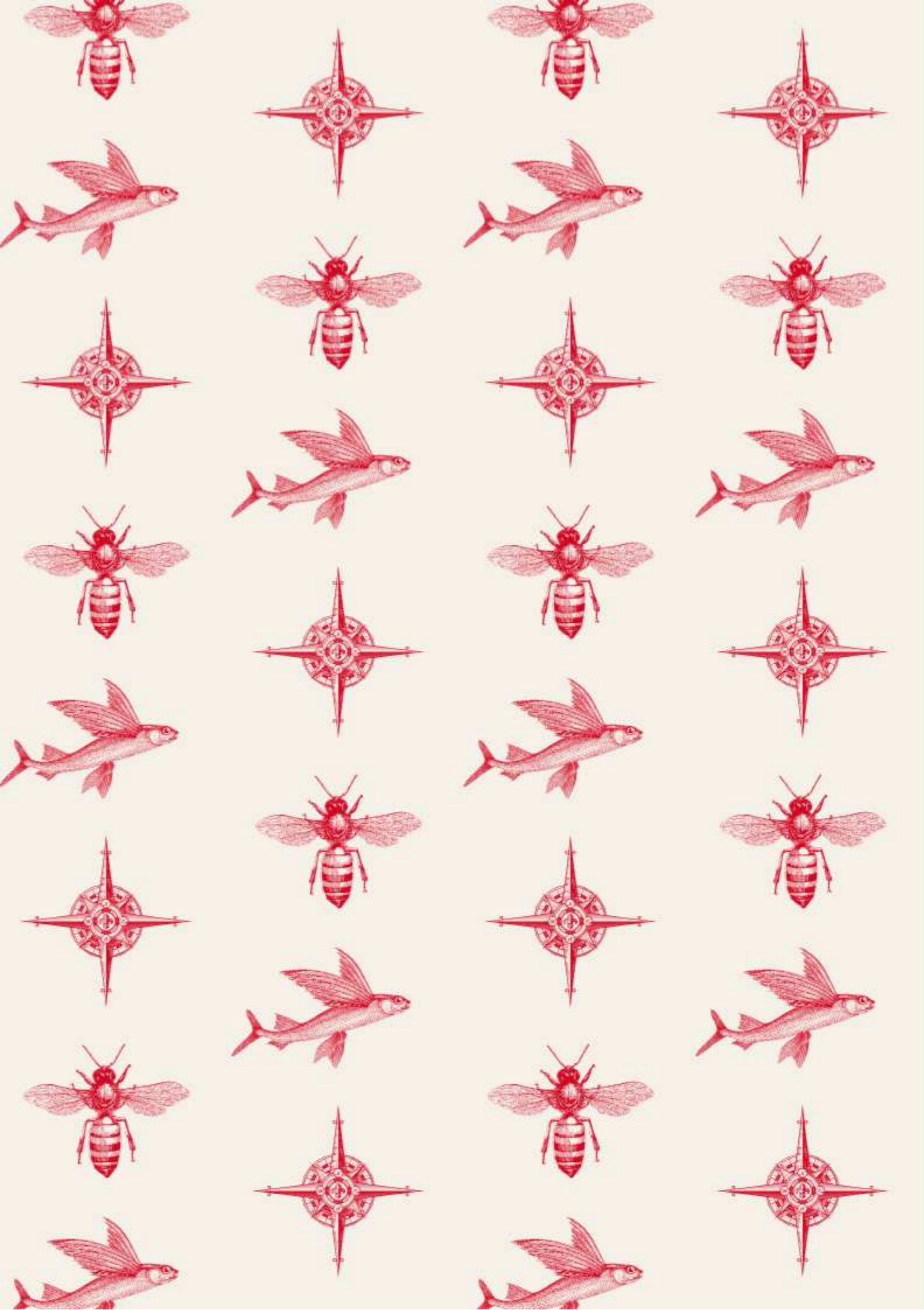


LONDON DOCK

WAPPING



St George
Designed for life



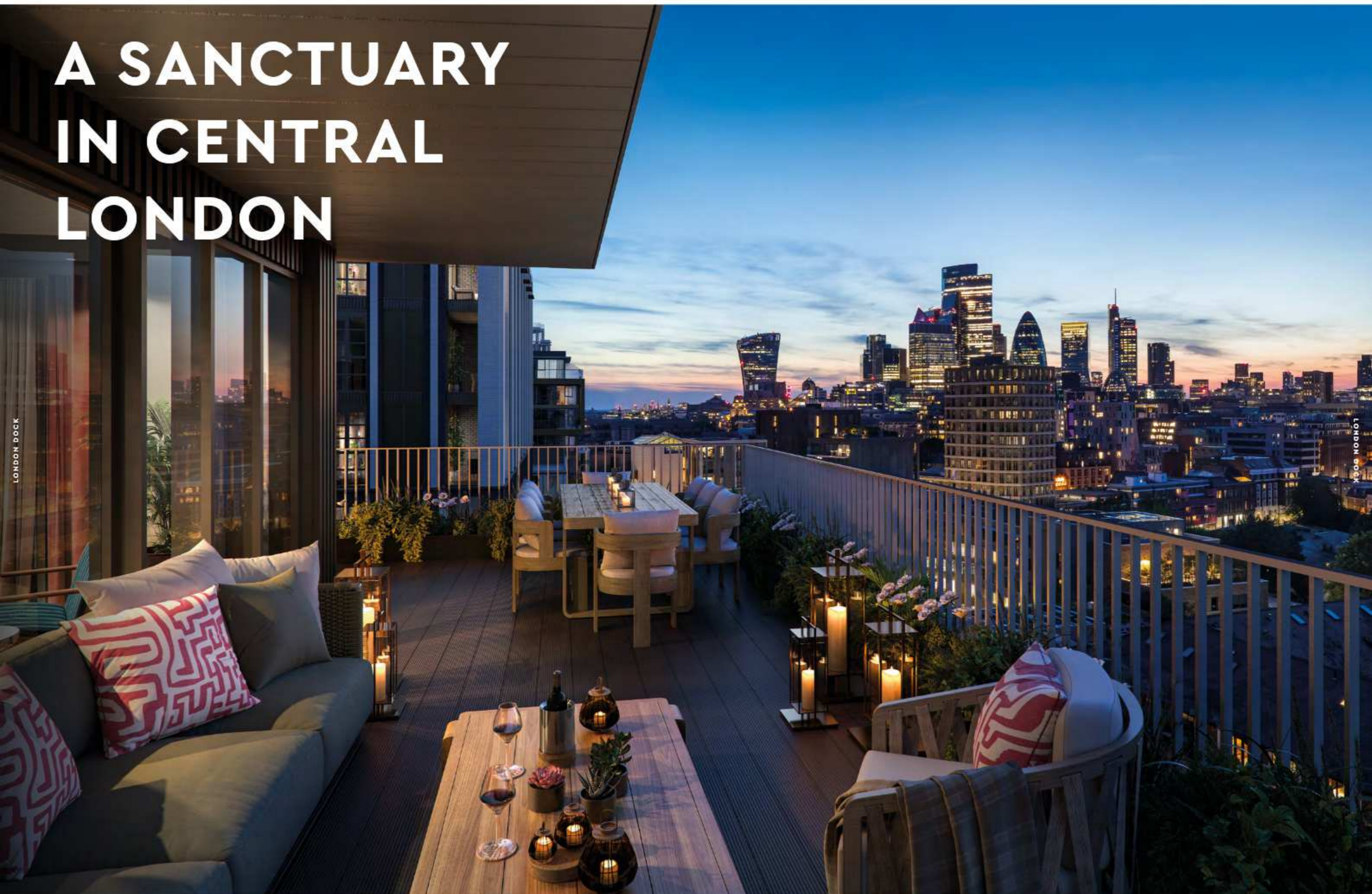
SIT DOWN

RELAX

OPEN YOUR MIND TO
A WHOLE NEW WORLD
OF OPPORTUNITY

THIS IS LONDON DOCK

A SANCTUARY IN CENTRAL LONDON



LONDON DOCK

LONDON DOCK



LONDON
EYE

THE SHARD

TOWER
BRIDGE

THE TOWER
OF LONDON

WAPPING

LONDON
BRIDGE
STATION

WAPPING HIGH
STREET

LONDON
BRIDGE

TOWER HILL
STATION

THE CITY
OF LONDON

ALDGATE EAST
STATION



LONDON DOCK

LONDON DOCK

THE LONDON DOCKS – A GATEWAY TO THE WORLD

The docks gave London a connection to the world. A connection that created the first truly global city.

Built in 1803, the London Docks helped inform and shape what we know as the Spirit of London. It is an influence that endures to this day.

"THIS GREAT PUBLIC WORK WILL MAKE LONDON THE FIRST PORT OF THE WORLD, AS IT IS ALREADY THE FIRST CITY OF THE WORLD."

William Daniell
Painter and printmaker



AN ELEVATED VIEW OF THE NEW DOCK IN WAPPING.
PRINT MADE BY WILLIAM DANIELL, 1803.

1803

LONDON DOCK

1805

THE OPENING OF THE LONDON DOCKS

IMAGE SOURCE: NATIONAL MARITIME MUSEUM

A green nephrite carving of a mythical creature, possibly a Qilin, resting on a dark, ornate base. The creature is depicted in a dynamic, coiled pose, with its head turned back. The base is dark with gold-colored decorative patterns.

A green nephrite sculpture of a mythical creature, possibly a Qilin, resting on a dark, ornate base. The creature is depicted in a dynamic, coiled pose, with its head turned back. The base is dark with gold-colored decorative patterns.

A large, dark-stained wooden barrel with several horizontal staves and metal hoops. It appears to be made of oak and is shown from a slightly low angle, emphasizing its height and rounded shape. The top is covered with a light-colored material, possibly a lid or a piece of cloth.

A large, dark-stained wooden barrel with several horizontal staves and metal hoops. It appears to be made of oak and is shown from a slightly low angle, emphasizing its height and rounded shape. The wood shows signs of age and wear.A large, dark-stained wooden barrel with several horizontal staves and metal hoops. It appears to be made of oak and is shown from a slightly low angle, emphasizing its height and rounded shape. The wood shows signs of age and wear.

1896

THE GAUGING GROUND AT THE LONDON DOCKS
TAKEN BY ALFRED NEWTON & SONS

IMAGE SOURCE: HERITAGE IMAGE PARTNERSHIP LTD / ALAMY STOCK PHOTO

1896

THE GAUGING GROUND AT THE LONDON DOCKS
TAKEN BY ALFRED NEWTON & SONS

IMAGE SOURCE: HERITAGE IMAGE PARTNERSHIP LTD / ALAMY STOCK PHOTO

1896

THE GAUGING GROUND AT THE LONDON DOCKS
TAKEN BY ALFRED NEWTON & SONS

IMAGE SOURCE: HERITAGE IMAGE PARTNERSHIP LTD / ALAMY STOCK PHOTO

'The Gauging Ground' at the London Docks was where 'gaugers' measured the quantity in each barrel. Today's Gauging Square pays tribute to this.



**"THE DEVELOPMENT
HONOURS THE HISTORY
OF WAPPING AND THE
DOCKS – THAT'S WHAT
GIVES IT SPIRIT"**

London Dock Resident

A vintage teal-colored typewriter with a black keyboard and a yellow carriage return lever. The typewriter is shown from a front-facing perspective, highlighting its classic design and mechanical components.

THE LAST BARREL TO LEAVE THE LONDON DOCKS

IMAGE SOURCE: @LONDON MUSEUM/ PIA COLLECTION

THE LAST BARREL TO LEAVE THE LONDON DOCKS

IMAGE SOURCE: @LONDON MUSEUM/ PIA COLLECTION

A vintage teal-colored typewriter with a black keyboard and a yellow carriage return lever. The typewriter is shown from a front-facing perspective, highlighting its classic design and mechanical components.

A vintage teal-colored typewriter with a black keyboard and a yellow carriage return lever. The typewriter is shown from a front-facing perspective, highlighting its classic design and mechanical components.

THE SPIRIT OF LONDON



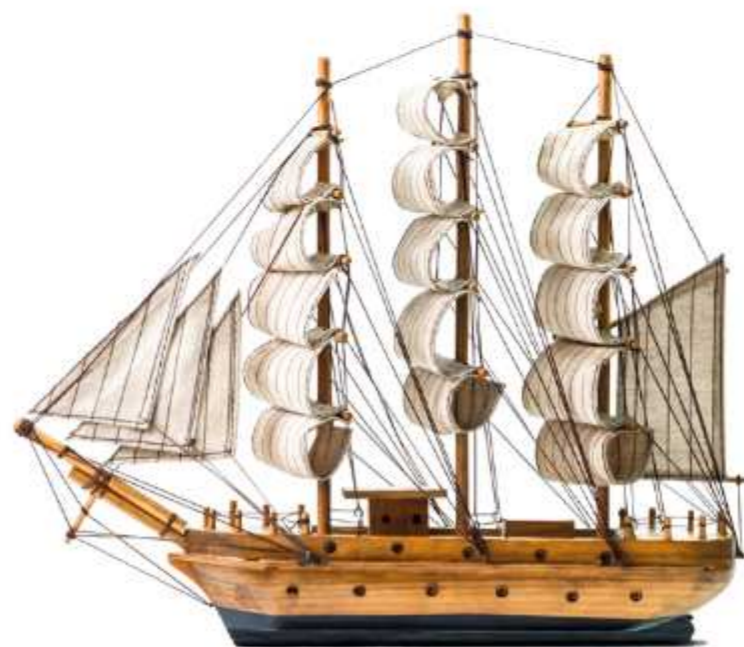
MORE THAN
JUST A CITY



LUXURIOUS LOCATIONS
Enjoying mocktails at Engels in the Royal Exchange

1000'S OF SHIPS FROM
1000'S OF PLACES
BRINGING 1000'S OF
PEOPLE WITH 1000'S
OF IDEAS AND 1000'S
OF ITEMS. THEY ALL CAME
TOGETHER TO CREATE
THE ELIXIR WE KNOW AS
THE SPIRIT OF LONDON.

The docks helped establish
London as a global centre for
trade, a place of infinite wonder
and seemingly boundless ideas.
This helped make London the
unique city that it is today.



TEA WAS MAINLY ENJOYED BY THE WEALTHY UNTIL TEA CLIPPERS
SPED UP THE JOURNEY FROM CHINA TO THE LONDON DOCKS.



THE MAYOR'S THAMES FESTIVAL
London's largest free festival



TOWER BRIDGE



ST KATHARINE DOCKS



GLORIANA BARGE
The Royal Barge is moored at St Katharine Docks



SHAKESPEARE'S GLOBE & THE TATE MODERN
Cultural icons sit side by side



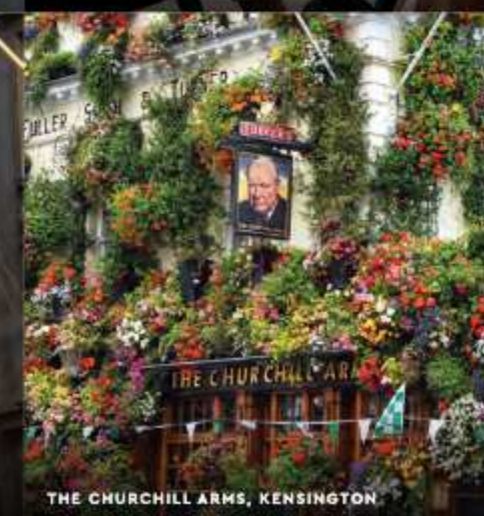
BREAKFAST AT TIFFANY'S?
Engels in the Royal Exchange has exquisite tastes
and views of classic luxury stores



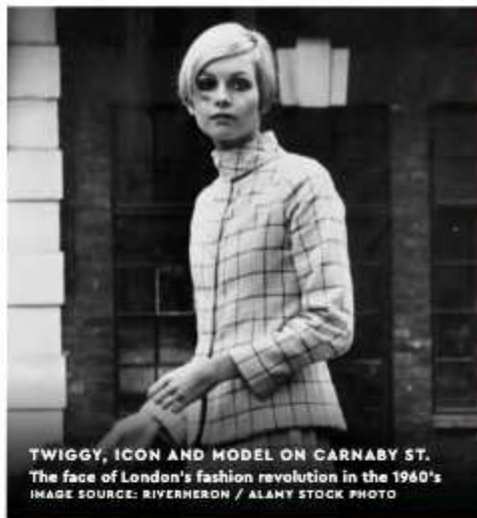
BUCKINGHAM PALACE



CORNHILL IN THE CITY



THE CHURCHILL ARMS, KENSINGTON



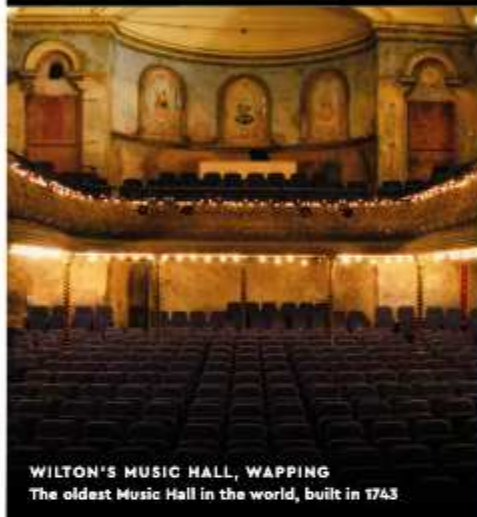
TWIGGY, ICON AND MODEL ON CARNABY ST.
The face of London's fashion revolution in the 1960's
IMAGE SOURCE: RIVERHEAD / ALAMY STOCK PHOTO



LONDON FASHION WEEK
Generates over £100m each year



STORMZY'S FAMOUS GLASTONBURY LOOK
Made by Banksy for the London rapper
IMAGE SOURCE: WALDENAR SIKORA / ALAMY STOCK PHOTO



WILTON'S MUSIC HALL, WAPPING
The oldest Music Hall in the world, built in 1743



TATE MODERN
A world-leading contemporary art gallery



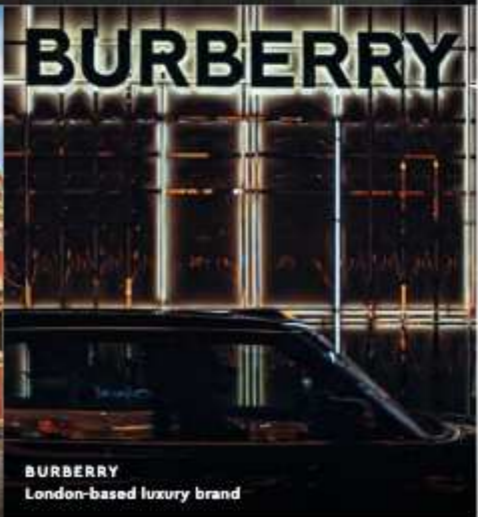
BLUE COCKEREL - KATHARINA FRITSCH ON THE FOURTH PLINTH IN TRAFALGAR SQUARE
The Fourth Plinth is one of the world's most famous public art commissions, changing every two years



SKATER AT THE SOUTHBANK CENTRE
A hub of culture, art & community



THE ROYAL ALBERT HALL
A globally renowned performance venue



BURBERRY
London-based luxury brand

FROM BOWIE TO BACON,
QUEEN TO MCQUEEN,
HOCKNEY TO HIRST AND
BURBERRY TO THE BEATLES.
THIS IS WHERE THE CREATORS
CREATE AND THE MAKERS MAKE.

A PLACE WHERE CULTURE THRIVES

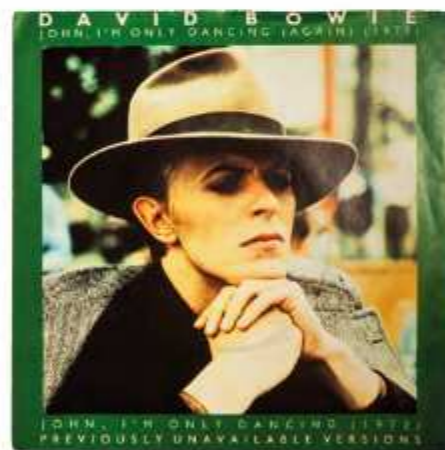


IMAGE SOURCE: RAZORPIX / ALAMY STOCK PHOTO
LONDON HAS INSPIRED SOME OF THE BEST SELLING ARTISTS EVER



London Dock sits centrally in one of the world's most important creative powerhouses, a city that has always been at the forefront of popular culture. From contemporary music to art, fashion, cinema and theatre, the Spirit of London continues to inspire each new generation.

BE FUN.

BE BRAVE.

BE DARING.

BE REAL.

BE YOURSELF.

BE HERE.

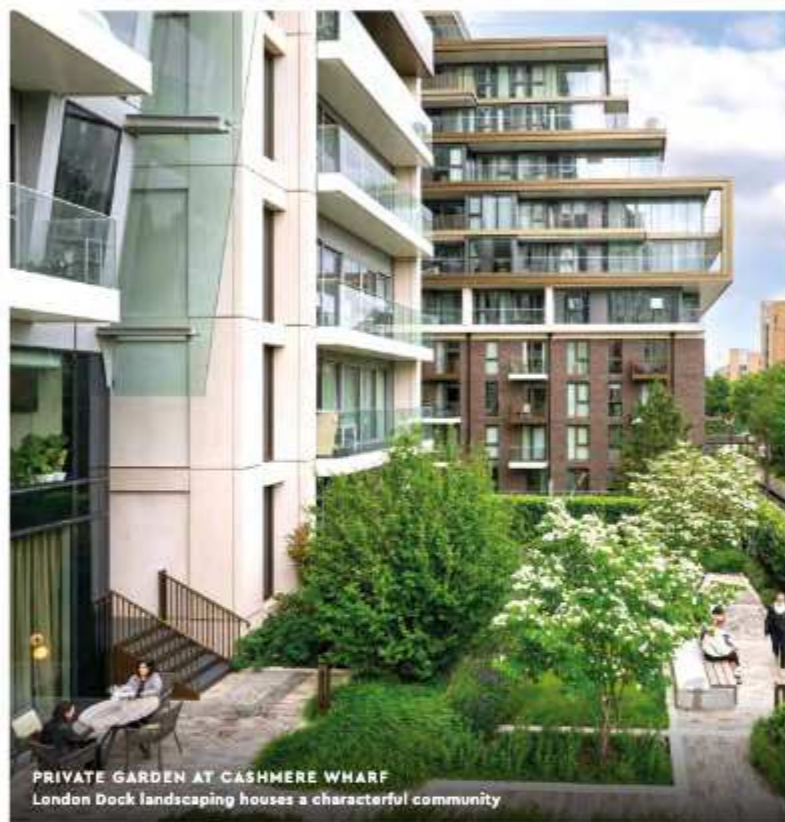


LONDON IS A PLACE WHERE PEOPLE THRIVE: ENERGISED AND INSPIRED BY THE CITY AND ITS INTERNATIONAL CONNECTIONS. CONNECTIONS THAT HAVE LAID THE FOUNDATIONS FOR LONDON BECOMING ONE OF THE MOST WELCOMING AND COSMOPOLITAN CITIES ON THE PLANET.

Home to communities from around the world, there are a myriad of ways that the people of London share their culture, relax and unwind. From it's fabulous fashion, to dining and leisure, and 197 London festivals, there is something for everyone.



SAY HELLO

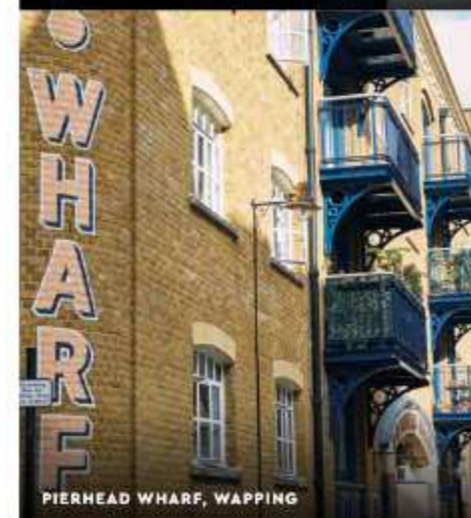


"WAPPING IS LIKE A
HIDDEN GEM WITHIN
THE CAPITAL WITH SO
MANY INDEPENDENT AND
EXCITING BUSINESSES
ON YOUR DOORSTEP"

London Dock Resident

TO A DIVERSE AND ESTABLISHED COMMUNITY

Wapping is a well established, secret enclave of London, set back from the hustle and bustle of central city life. Sitting on the banks of the River Thames, it is a short stroll from the iconic Tower Bridge, the Tower of London and St Katharine Docks. London Dock brings a new focal point to this community, a new place to meet, eat or just enjoy the laid back life with friends.



AN INVITING NEW NEIGHBOURHOOD SET
WITHIN 7.5 ACRES OF OPEN SPACE. YOU CAN
STROLL ALONG THE WATERSIDE PROMENADE,
EXPLORE THE DELIGHTFUL PRIVATE
RESIDENTS' GARDENS, OR VISIT GAUGING
SQUARE – A HIVE OF ACTIVITY SURROUNDED
BY SHOPS, BARS AND RESTAURANTS.



LONDON DOCK

COMPUTER-GENERATED IMAGE IS INDICATIVE ONLY



EXPLORE THE
LOCAL AREA



RIVERSIDE PROMENADE BY TOWER BRIDGE

LIFESTYLE IMAGES ARE INDICATIVE ONLY 27



COTE, ST KATHARINE DOCKS



ENGELS, THE ROYAL EXCHANGE



THE ROYAL EXCHANGE



GAUGING SQUARE, LONDON DOCK



THE ROYAL EXCHANGE



ST KATHARINE DOCKS



GAUGING SQUARE, LONDON DOCK



WHITE MULBERRIES, ST KATHARINE DOCKS



WHITE MULBERRIES, ST KATHARINE DOCKS



THE LEADENHALL BUILDING



VICINITY RESTAURANT, THE TOWER HOTEL



SAVAGE GARDEN ROOFTOP BAR



ST KATHARINE DOCKS

DINING & RETAIL THERAPY



There are plenty of amazing locations to visit locally. With great choices for fine dining, spectacular views and shopping.

THE CITY

1. The Anthologist
2. City Social
3. Coq D'Argent
4. Duck & Waffle
5. Goodman City
6. The Ivy Asia
7. Leadenhall Market
8. Madison
9. The Ned
10. One New Change
11. Royal Exchange
12. Sky Garden
13. Sushi Samba

LONDON BRIDGE

14. Baluchi
15. Café Murano
16. Fleurie
17. Jose
18. Pizarro
19. Restaurants at the Shard
20. Restaurant Story
21. Roast
22. Tavolino
23. Trivet

CITY VIEWS

24. 14 Hills
25. The Cardinal Bar & Kitchen
26. The Culpeper
27. Jin Bo Law
28. Florattica Rooftop London
29. Ottolenghi
30. Savage Garden
31. Spitalfields Market

ICONIC LANDMARKS

32. St. Katharine Docks Restaurants & Bars
33. Cloud M
34. La Dame de Pic
35. The Ivy Tower Bridge
36. Legare
37. Vicinity Restaurant

HISTORIC WAPPING

38. London Dock Restaurants & Cafés
39. Il Bordello
40. Prospect of Whitby
41. Smith's of Wapping
42. Town of Ramsgate
43. Wapping Tavern

HEAD WEST FOR CITY SLICKERS & ICONIC SIGHTS



ENGELS



ENGELS



FORTNUM & MASON



20 FENCHURCH STREET



ST PAUL'S CATHEDRAL



THE GHERKIN, 30 ST MARY'S AXE



LEADENHALL MARKET

You can't say that the City is short on great things to do. There are incredible rooftop bars like Savage Garden and Sabine, whilst The Royal Exchange offers a haven of high end concept dining, including the British classic Fortnum and Mason and 1920's Berlin-inspired Engels. It is also home to many luxury retailers such as Hermes, Tiffany & Co and Mont Blanc.



THE HERMÈS BIRKIN BAG IS AN ICONIC DESIGN NAMED AFTER LEGENDARY LONDONER JANE BIRKIN



SAVAGE GARDEN ROOFTOP BAR
City of London

THE CITY OF LONDON MEANS BUSINESS WITH ITS UNIQUE BUILDINGS HOUSING SOME OF THE WORLDS MOST INFLUENTIAL COMPANIES. THE COMMUTE TO THE CITY FROM LONDON DOCK COULDN'T BE EASIER WHETHER YOU WALK, GET THE TUBE FROM TOWER HILL OR THE BUS FROM RIGHT OUTSIDE YOUR DOOR.



2 MINS



DLR

to Bank
from Shadwell

3 MINS



TUBE

to Cannon Street
from Tower Hill

10 MINS



BUS

to Bishopsgate
from London Dock

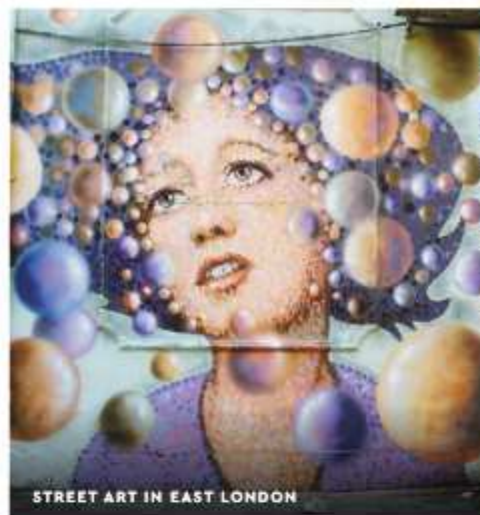
21 MINS



WALK

to The Leadenhall Building
from London Dock

HEAD NORTH FOR TREND-SETTERS & THE ART SCENE



STREET ART IN EAST LONDON



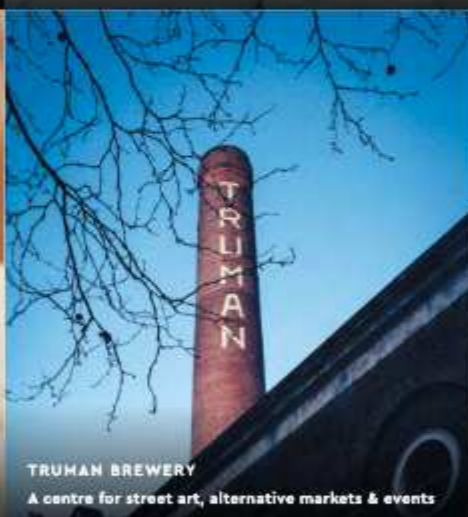
WHITECHAPEL STATION



ALL POINTS EAST
One of the many festivals hosted in Victoria Park, Hackney



FRIENDS IN EAST LONDON



TRUMAN BREWERY
A centre for street art, alternative markets & events



THE PRINCESS OF SHOREDITCH
Enjoy top quality pub fare in East London



PHOTOGRAPHER IN EAST LONDON



STREET ART IN EAST LONDON



THE FAMOUS BRICK LANE BEIGEL SHOP
A London staple serving delicious bagels



KAWS, FAMOUS STREET ARTIST THAT IS KNOWN FOR HIS CONTEMPORARY MODELS.



THE OLD & THE NEW
Victorian terraces sit beside modern architecture

North of London Dock lies Shoreditch, Hoxton and many of the haunts of the creative folk. From the hottest bars to street art galleries and the bagel shops of the old East End there is always something surprising around the corner that only the most discerning cool-hunters know about.

Shoreditch is the spot for dining in East London. No longer just about pie and jellied eels, there are amazing baltis and bagels on Brick Lane and gastropubs aplenty.





LONDON DOCK

HEAD EAST FOR NEW LONDON COOL & LUX LEISURE

CANARY WHARF LONDON UNDERGROUND STATION
The impressive and memorable escalators at Canary Wharf are designed by Foster & Partners Architects



SIX PUBLIC CLOCKS BY KONSTANTIN GRČIĆ
Based on the iconic Swiss railway clock but here each of the 12 faces shows a single and different numeral

Canary Wharf is the new kid on the block when it comes to London hang outs, but it is now far from just the business district it started out as. Home to impressive architecture, chic waterside restaurants, luxury shopping malls and constantly changing art installations, it adds a fresh flavour to historic London.

It has also become the place to do something different in London, with unique opportunities for activities including open water swimming, kayaking, mini golf, and an outdoor amphitheatre.



CROSSRAIL PLACE ROOF GARDEN
One of London's largest roof gardens with exotic plants, benches nestled in hidden pathways and an amphitheatre



IVY IN THE PARK
Friendly, sophisticated all-day dining from modern British classics to Asian-inspired cuisine



NO.5 MACKENZIE WALK
Modern bar & restaurant with stunning waterfront bar & terrace



KAYAKING, ROYAL DOCKS
There are several water sports on offer throughout Canary Wharf from sailing to swimming

LONDON DOCK



HEAD SOUTH FOR GOURMANDS & GOOD TIMES

Just a short walk over the river, London Bridge and Bermondsey offer a plethora of dining establishments. Borough Market plays host to everything from olive stands and fresh oysters to the finest of wines. Michelin starred Trivet, fine dining hangout Restaurant Story, Angela Hartnett's Café Murano and the numerous concepts of Jose Pizarro make this area one of the capitals culinary hot spots.



A LONDON STAPLE OF OLD, NOW A LUXURY DINING DELICACY, THERE ARE FIVE OYSTER BARS IN BOROUGH MARKET ALONE!

"MY PERFECT WEEKEND
WOULD START WITH
DINNER ON FRIDAY,
THEN HAVING A
DELICIOUS BREAKFAST
AT BOROUGH MARKET
ON SATURDAY"

London Dock Resident



LOLO, ALL DAY RESTAURANT
One of the famed José Pizarro's dining experiences on Bermondsey Street



THE QUEEN'S WALK
With views of the city & HMS Belfast, this is an idyllic place to wander.



MORE LONDON & TOWER BRIDGE
Food, culture and programmed events enliven the riverbank at More London



FISH! AT BOROUGH MARKET
The award-winning fish and chip shop



BOROUGH MARKET
One of the largest and oldest food markets in London, dating back to the 12th century



CHAPTER 72 BERMONDSEY STREET
Home to one of the best espresso martini's in London



HIGH-END RESTAURANTS AT THE SHARD
Dine with exceptional views at Aqua Shard, Oblix, Hutong, Ting Restaurant & Lounge and Gōng Bar



HISTORIC WAREHOUSES
Historic warehouses converted into everything from galleries to apartments to restaurants



COLOURFUL SIGHTS IN SOUTHWARK



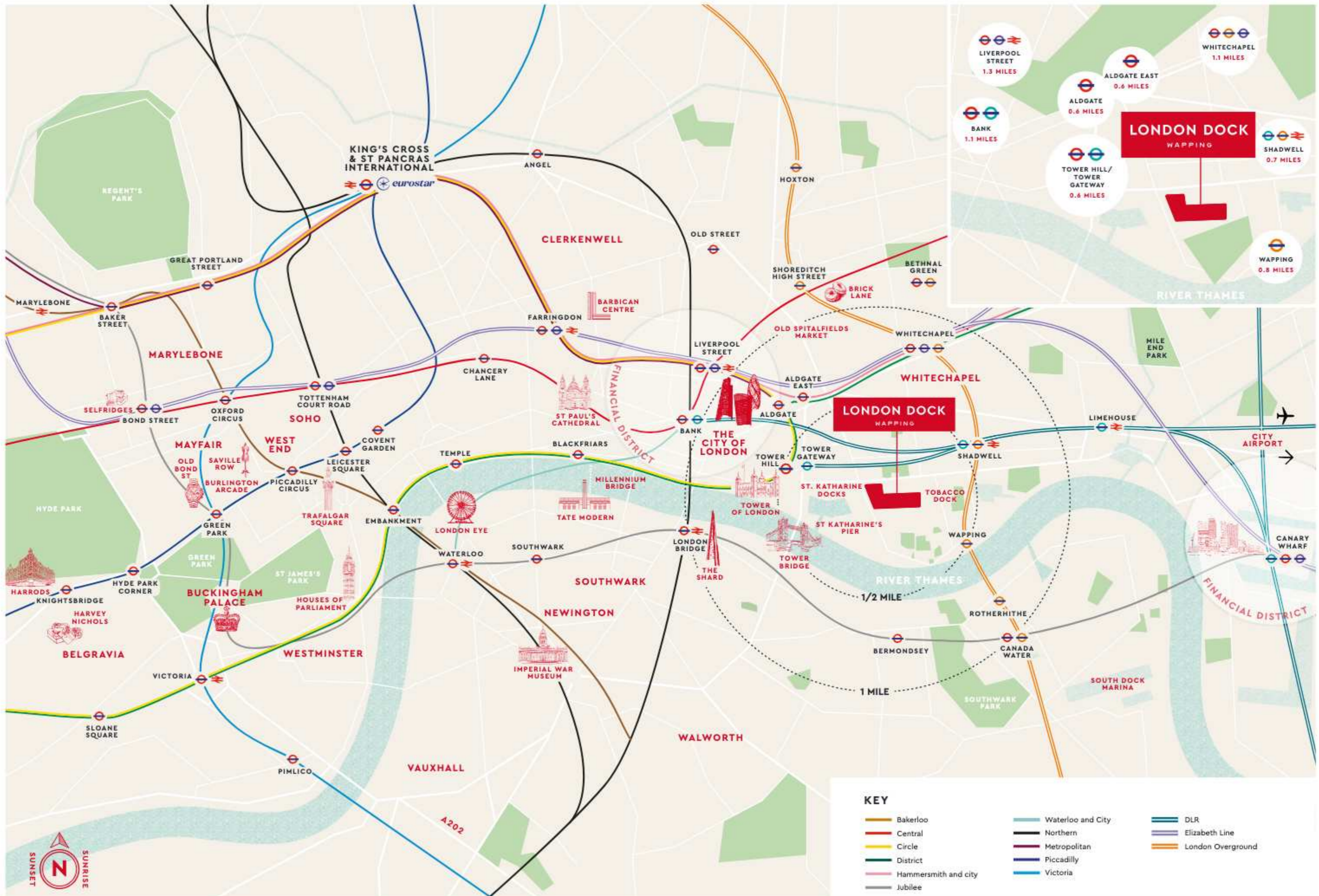
JOSÉ, TAPAS RESTAURANT
One of the famed José Pizarro's dining experiences on Bermondsey Street



MOROCCO BOUND
Catch live jazz or a book reading at local independent hang-out Morocco Bound



RESTAURANTS ON STONEY STREET
Elegant dining at its best there are many delicious choices from Korean to Puglian restaurants





YOU'RE NEVER FAR FROM WHERE YOU NEED TO BE

THE SITE OF LONDON DOCK WAS ONCE A HUB CONNECTING LONDON TO THE WORLD.

Connections to and from London Dock make life simple. Travel all over the capital is easy and fast, whatever the means of transport.

- WALKING FROM LONDON DOCK
- CYCLING FROM LONDON DOCK
- UNDERGROUND FROM TOWER HILL
- DLR FROM SHADWELL

WHERE AMBITION IS NURTURED AND GREATNESS IS HONED

LONDON DOCK IS PERFECTLY SITUATED FOR EASY ACCESS TO THE CAPITAL'S SCHOOLS, COLLEGES AND UNIVERSITIES. THESE WORLD RENOWNED SEATS OF LEARNING WHERE THE FUTURE OF THE ARTS, SCIENCE, TECHNOLOGY, MEDICINE AND BUSINESS IS BEING SHAPED.

The Royal College of Art, Imperial College, King's College London, University College London and the London School of Economics are among the world's most prestigious universities and colleges; all are based in London.



LEARNING THE BUSINESS
London has some of the worlds top business schools



A FINE SCIENCE
UCL comes in third after Oxbridge for the sciences



RICH PEDIGREE
Over 70 Nobel Prize laureates have studied or worked at a London university



A FLAIR FOR THE ARTS
Some of the greatest artists have studied in London, achieving in many fields, from fashion design to fine art

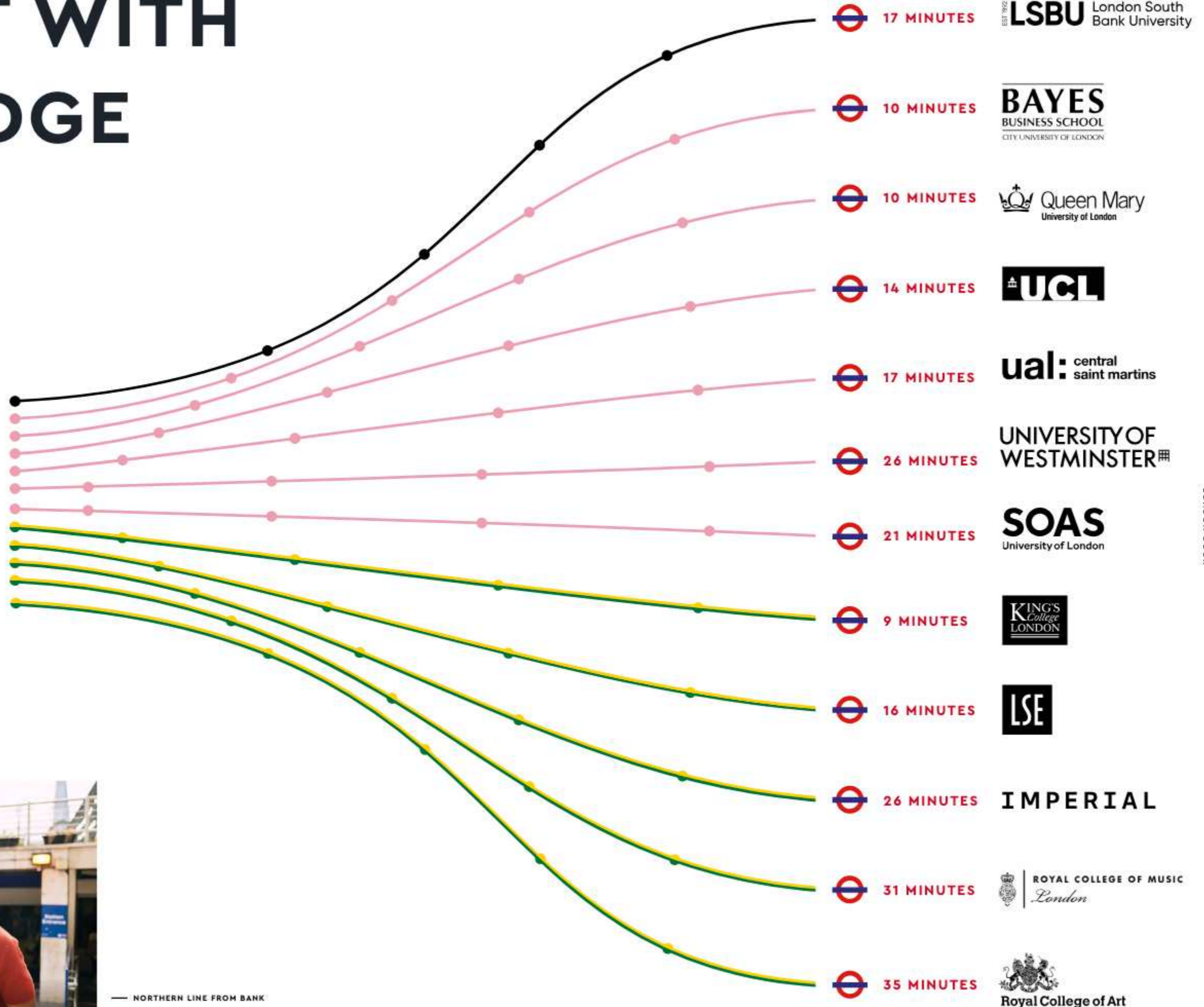
NEXT STOP: SUCCESS

QUEEN MARY UNIVERSITY OF LONDON	LONDON SOUTHBANK UNIVERSITY	BAYES BUSINESS SCHOOL CITY UNIVERSITY LONDON	KING'S COLLEGE LONDON	LONDON UNIVERSITY OF ARTS	LONDON SCHOOL OF ECONOMICS	UNIVERSITY COLLEGE LONDON	SOAS UNIVERSITY OF LONDON	UNIVERSITY OF WESTMINSTER	IMPERIAL COLLEGE OF LONDON	ROYAL COLLEGE OF MUSIC	ROYAL COLLEGE OF ART
2 STOPS ALDGATE EAST TO STEPNEY GREEN	3 STOPS BANK TO ELEPHANT & CASTLE	2 STOPS ALDGATE EAST TO MOORGATE	5 STOPS TOWER HILL TO TEMPLE	5 STOPS ALDGATE EAST TO KINGS CROSS	5 STOPS TOWER HILL TO TEMPLE	6 STOPS ALDGATE EAST TO EUSTON SQUARE	6 STOPS ALDGATE EAST TO EUSTON SQUARE	7 STOPS ALDGATE EAST TO GREAT PORTLAND STREET	11 STOPS TOWER HILL TO SOUTH KENSINGTON	11 STOPS TOWER HILL TO SOUTH KENSINGTON	12 STOPS TOWER HILL TO GLOUCESTER ROAD
3.0 KMS / 1.9 MILES	3.7 KMS / 2.3 MILES	4.5 KMS / 2.8 MILES	3.7 KMS / 2.3 MILES	4.8 KMS / 3.0 MILES	4.0 KMS / 2.5 MILES	5.8 KMS / 3.6 MILES	4.6 KMS / 2.9 MILES	6.9 KMS / 4.3 MILES	8.9 KMS / 5.5 MILES	9.0 KMS / 5.6 MILES	8.9 KMS / 5.5 MILES

CONNECT WITH KNOWLEDGE

GET TO LONDON'S GREAT KNOWLEDGE HUBS QUICKLY AND EASILY WITH CONNECTIONS BY TUBE.

LONDON DOCK WAPPING



— NORTHERN LINE FROM BANK
— HAMMERSMITH & CITY LINE FROM ALDGATE EAST
— DISTRICT LINE FROM TOWER HILL
— CIRCLE LINE FROM TOWER HILL

LONDON DOCK

49

LIFESTYLE IMAGE IS INDICATIVE ONLY

48

TRAIN TIMES REPRESENT TYPICAL JOURNEY TIMES FROM STATIONS AT 7AM MONDAY, EXCLUDING INTERCHANGES: SOURCE WWW.GOOGLE.COM/MAAPS

"AT LONDON DOCK THERE IS
A GREAT COMMUNITY AND THE
LOOK OF THE DEVELOPMENT
IS REALLY BEAUTIFUL. IT'S SO
CALM AND PEACEFUL, LIKE A
LITTLE OASIS."

Retailer at London Dock since 2021

WAPPING SOURDOUGH



LONDON DOCK

LONDON DOCK

WHAT YOU NEED & LOVE

**GAUGING SQUARE IS A HIVE OF ACTIVITY, WITH
GYMS, SHOPS, CAFÉS, BARS & RESTAURANTS.**

WAPPING SOURDOUGH

Pick up your delicious fresh loaf, a sweet treat or fabulous focaccia. Former suppliers to the London 2012 Olympics, this home bakery produces artisan sourdough goods, fresh every day.



SLURP NOODLES

Enjoy hearty bowls of noodle soup, roasted meats and authentic Thai street food in a cool and casual setting. An epic choice whether you're spicing up your lunch break, impressing a date or treating yourself.



CHAMPAGNE ROUTE

This sleek restaurant offers a touch of class. Enjoy refined international fare, masterfully paired with an extensive wine list. If you are feeling fizzy they also have a fabulous brunch menu.



BENHAM AND REEVES

Benham and Reeves can help with all your property needs, from buying and selling to renting and letting.



CLUB PILATES

The San Diego reformer pilates studios that are taking London by storm are now at London Dock. Offering state of the art equipment and instruction.



CITY DOCK PHARMACY

Skilled medical pharmacists and experienced professionals delivering exceptional services catering to the needs of both private & NHS patients.



SAINSBURY'S LOCAL

On the doorstep of London Dock is your local supermarket, great for all your essentials and day-to-day items.



STARRY MART

A modern store specializing in Asian food, with food and beverages from China, Japan, Korea, Malaysia, Singapore, Indonesia, Thailand, and Vietnam.



MOTHERDOUGH

Your local Neapolitan pizzeria puts the dolce vita into London Dock. Simple, authentic and complemented by natural wine, what more could you need?



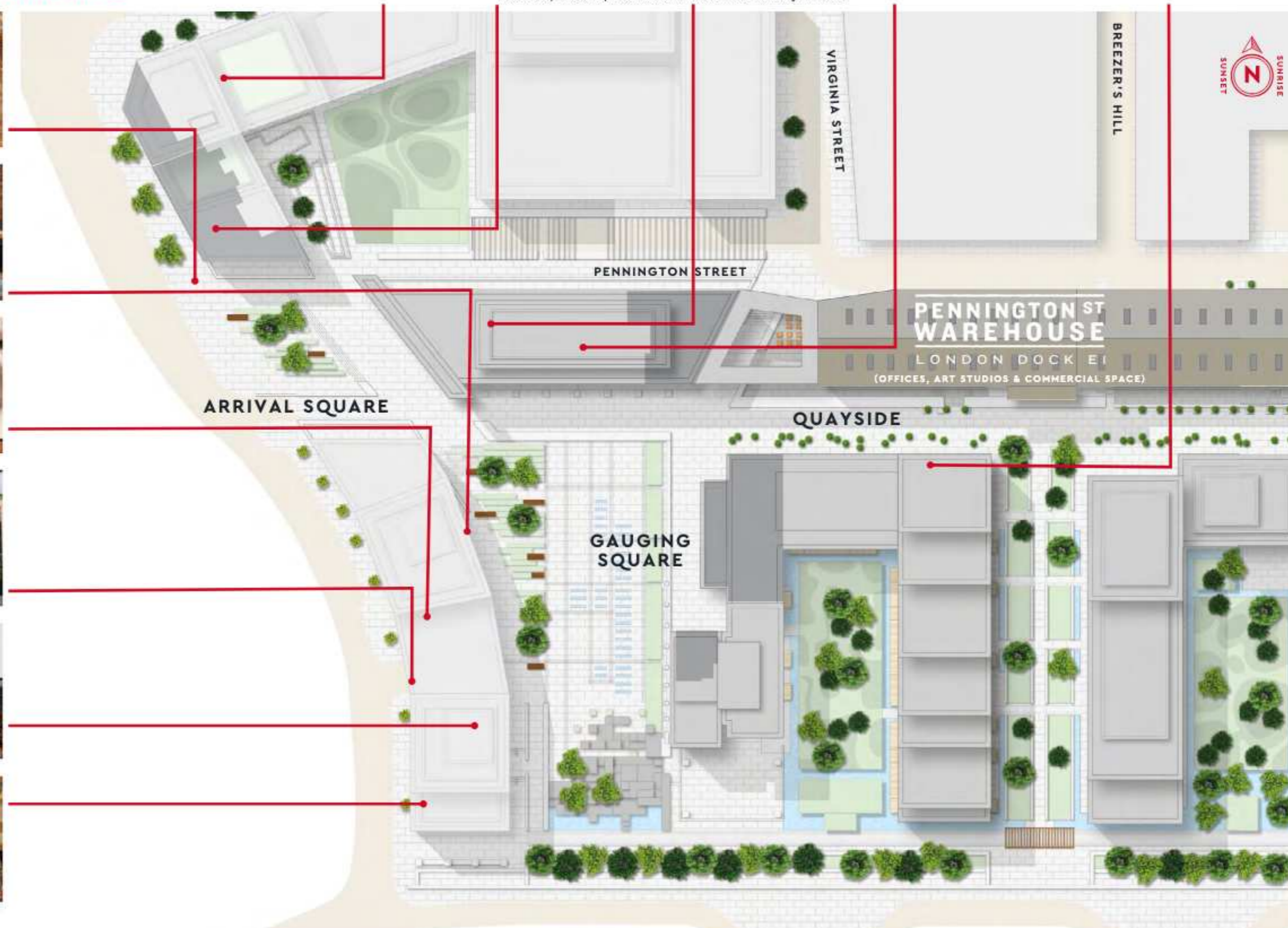
URBAN BARISTAS

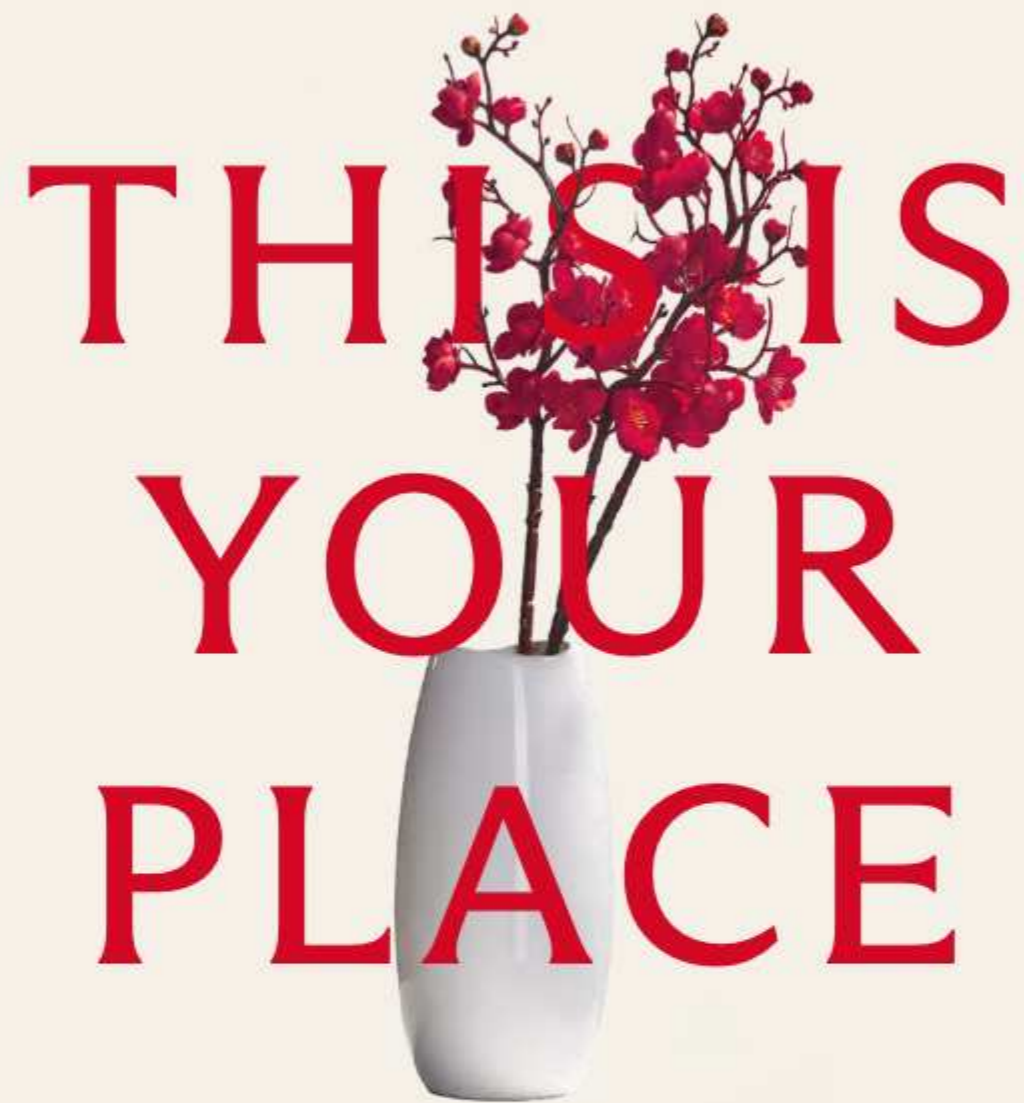
Aussies rule at Urban Baristas. Serving up that taste of Australian beach culture in a cup, coffee is at the heart of everything they do.



E1 CROSSFIT

A CrossFit gym for everyone. If building confidence, having fun and getting fit is your goal - this one is for you!





CALL LONDON DOCK
YOUR HOME



LOVE LONDON LIVING



LONDON DOCK

LONDON DOCK



WAPPING

THE
MAURETANIA
LOUNGE

PENNINGTON
QUAY WALK

JADE WHARF

PENNINGTON ST
WAREHOUSE
LONDON DOCK E1
(OFFICES, ART STUDIOS
& COMMERCIAL SPACE)

CANARY
WHARF

BLOCK J
(FUTURE PHASE)

THE
CITY

EMERY
WHARF

GAUGING
SQUARE

COUNTER
HOUSE

MERINO
WHARF

SAFFRON
WHARF

ARRIVAL
SQUARE

ADMIRALTY
HOUSE

ALEXANDER
WHARF

24HR
CONCIERGE

CASHMERE
WHARF

WATER
GARDEN

MERINO
GARDENS

WATER
GARDEN

BOXWOOD
GARDENS

WATERSIDE
PROMENADE

BLOCK H
(FUTURE PHASE)

MARKET
SQUARE

THE
CLUB
RESIDENTS
FACILITIES

ST KATHARINE
DOCKS AND
TOWER BRIDGE

RIVER
THAMES





COMPUTER-GENERATED IMAGE IS INDICATIVE ONLY

TAKE TIME OUT FROM THE BUZZ- AN OASIS IN THE CITY

Landscaping plays an integral part in creating a uniquely peaceful feel, though the busy streets of the City are on your doorstep. Private and public gardens, water features and connecting pathways energise and encourage the community to come together, while providing space for peace and quiet in your own private sanctuary from London life.

"THE LOCATION IS SO CENTRAL BUT IT'S LIKE A LITTLE OASIS HERE. IT'S SO CALM AND PEACEFUL AND IT LOOKS BEAUTIFUL."

London Dock Resident



TAKING A STROLL DOWN THE WATERSIDE PROMENADE

LIFESTYLE IMAGE IS INDICATIVE ONLY

LONDON DOCK

61



LONDON DOCK

LONDON DOCK

LIFE-READY LUXURY, INSIDE & OUT

This exciting new neighbourhood of 2,038 high-quality homes is set in beautifully landscaped open spaces, designed for effortless and relaxed contemporary living.

The high quality materials and standard of finish make these a superb choice of home in an amazing location.

"WE HAD ALWAYS REMARKED ON HOW BEAUTIFUL THE DEVELOPMENT LOOKED AND WERE REALLY IMPRESSED WITH BOTH THE SIZE AND THE SPECIFICATION OF THE APARTMENTS. WE COULDN'T WAIT TO MOVE IN."

London Dock Resident



LONDON DOCK

65

COMPUTER-GENERATED IMAGE IS INDICATIVE ONLY

64

INTERIOR PHOTOGRAPHY IS OF JADE WHARF SHOW APARTMENT INTERIORS AND IS INDICATIVE ONLY.

"THE BUILDINGS ARE VERY STRIKING AND MODERN AT LONDON DOCK. THE HOME WE LIVE IN IS VERY HIGH QUALITY, AND WE REALLY LOVE OUR TERRACE"

London Dock Resident



A PLACE TO STAY, THE LONDON DOCK WAY

WHETHER YOU DREAM OF A BREATHTAKING PANORAMIC BALCONY, THE PERFECT KITCHEN TO HOST, OR A BEDROOM TO TAKE YOU AWAY FROM THE EVERY DAY, THERE ARE HOMES AT LONDON DOCK TO FIT YOUR EVERY NEED.

Designed with the resident in mind with quality always at the forefront, the materials used have been sourced with both aesthetic and practical considerations to create truly life-ready luxury living.

Jade Wharf is the latest addition to the London Dock neighbourhood. Designed for the taste maker, with exquisitely appointed manhattan, one, two and three bedroom apartments.



London Dock has been designed for those who seek and recognise high quality luxury living.

Every detail that adorns the interiors has been carefully and deliberately selected. From the location itself, the landscaped gardens and exemplar residents facilities, down to the choice of fixtures and fittings.

This is contemporary urban living at its very best.



ALL ABOUT YOU

FACILITIES AT
YOUR FINGERTIPS



"I DIDN'T KNOW THAT I NEEDED
A SWIMMING POOL IN MY LIFE,
BUT NOW I SWIM EVERY MORNING
AND I ABSOLUTELY LOVE IT."

London Dock Resident

EVERYTHING TAKEN CARE OF AT THE CLUB

THE CLUB, PART OF
LONDON DOCK'S HOTEL
STYLE FACILITIES
BRING THE COMMUNITY
TOGETHER THROUGH
COMMUNAL SPACES AND
SHARED LEISURE TIME.

STAYING FIT

Residents have use of a fully-equipped gymnasium, squash court, swimming pool and virtual golf suite.

LOOKING AFTER YOU, 24HR CONCIERGE

Whether it's collecting a package or ordering a taxi, the London Dock concierge is available any time, day or night.

FOR THE MOVIE LOVERS

A state-of-the-art private screening room with surround sound is available exclusively to residents.

TREAT YOURSELF

The jacuzzi, sauna, steam and treatment rooms are an essential for those who love to look after themselves. Residents wellbeing is always taken care of.

TAKE TIME FOR YOU

The Residents' Lounge provides an informal atmosphere where residents can work or relax and unwind from the stress of the day.



SQUASH COURTS



THE CLUB RECEPTION



24HR CONCIERGE



SAUNA



TREATMENT ROOM



SWIMMING POOL & JACUZZI



CINEMA ROOM



GOLF SIMULATOR



GYM

THE
CLUB

THIS IS LIVING REDEFINED

OUTSTANDING FACILITIES ENHANCE THE
WELLBEING OF LONDON DOCK RESIDENTS.
THE LATEST ADDITIONS TAKE LUXURY
LIVING TO THE NEXT LEVEL.

LONDON DOCK

77

LIFESTYLE IMAGE IS INDICATIVE ONLY

LONDON DOCK

76

THE NEW GOLDEN AGE OF LUXURY HAS ARRIVED



RMS MAURETANIA
One of the most luxurious cruise liners of its day

IMAGE SOURCE: HILARY MORGAN / ALAMY STOCK PHOTO

ENTER INTO THE GLAMOROUS WORLD OF THE GOLDEN AGE OF TRAVEL WITH THE LATEST ADDITIONS TO THE FACILITIES AT LONDON DOCK.

Inspired by the luxury of cruise liners in the early 20th century, the facilities now have even more to offer. Once, people travelled in style, now you can experience elegance and sophistication every day on your doorstep.

The spaces take the inspiration of this theme, including an impressive Grand Staircase, Oceanic Lounge with spectacular double height aquarium, a verdant Palm Room to relax in and an Observation Lounge where you can sit back, relax and enjoy a drink.

THE MAURETANIA LOUNGE



THE GRAND STAIRCASE & OCEANIC LOUNGE

Make a grand entrance into a stunning lounge, with decor that brings the ocean into the heart of the city.

WELCOME TO YOUR WORLD

IN THE SUMPTUOUS INTERIORS
OF THE MAURETANIA LOUNGE,
THE LUXURY OF THE CRUISE
LINERS OF THE PAST IS REVIVED
AND RENEWED.

The Mauretania Lounge is a
contemporary take on the world
famous passenger liner that is
its namesake.

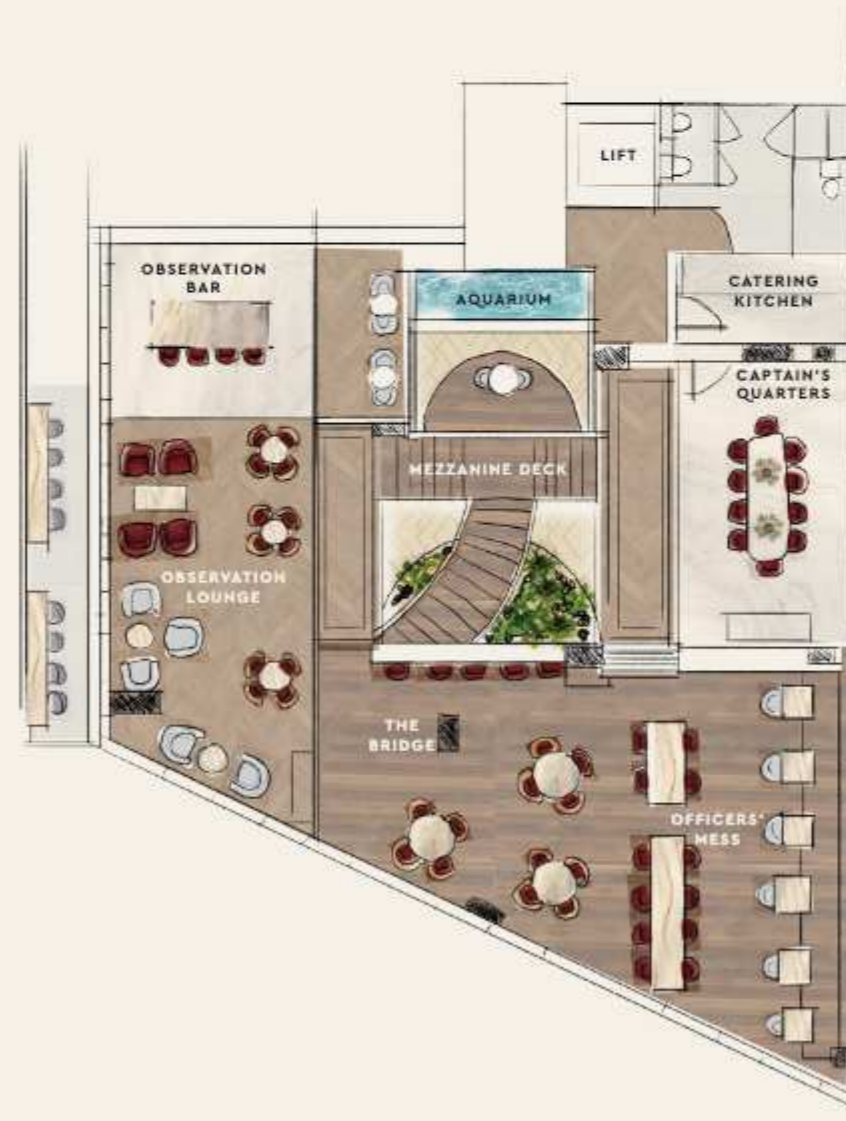
The lounge is split into distinct
areas such as The Oceanic Lounge,
The Bridge, The Observation Bar,
The Captain's Quarters, each of
which evokes a different experience
of the Golden Age of Travel.



COMPUTER-GENERATED IMAGE IS INDICATIVE ONLY



GROUND FLOOR



FIRST FLOOR



THE OBSERVATION DECK

Look out over the dancing fountains of Gauging Square. A place to meet with neighbours and friends, socialise and take in the ambience.

"THANKS TO THE RESIDENTS' FACILITIES, THERE ARE OPPORTUNITIES TO GET TO KNOW YOUR NEIGHBOURS AND BUILD LONG LASTING FRIENDSHIPS. IT COMPLETELY CHANGED MY PERSPECTIVE ON LONDON LIVING."

London Dock Resident

THE MAURETANIA LOUNGE



CAPTAIN'S QUARTERS

Dine like the captain of your own private yacht. This private dining room, with its own catered kitchen, is perfect for decadent dinners with friends, neighbours or business associates alike.

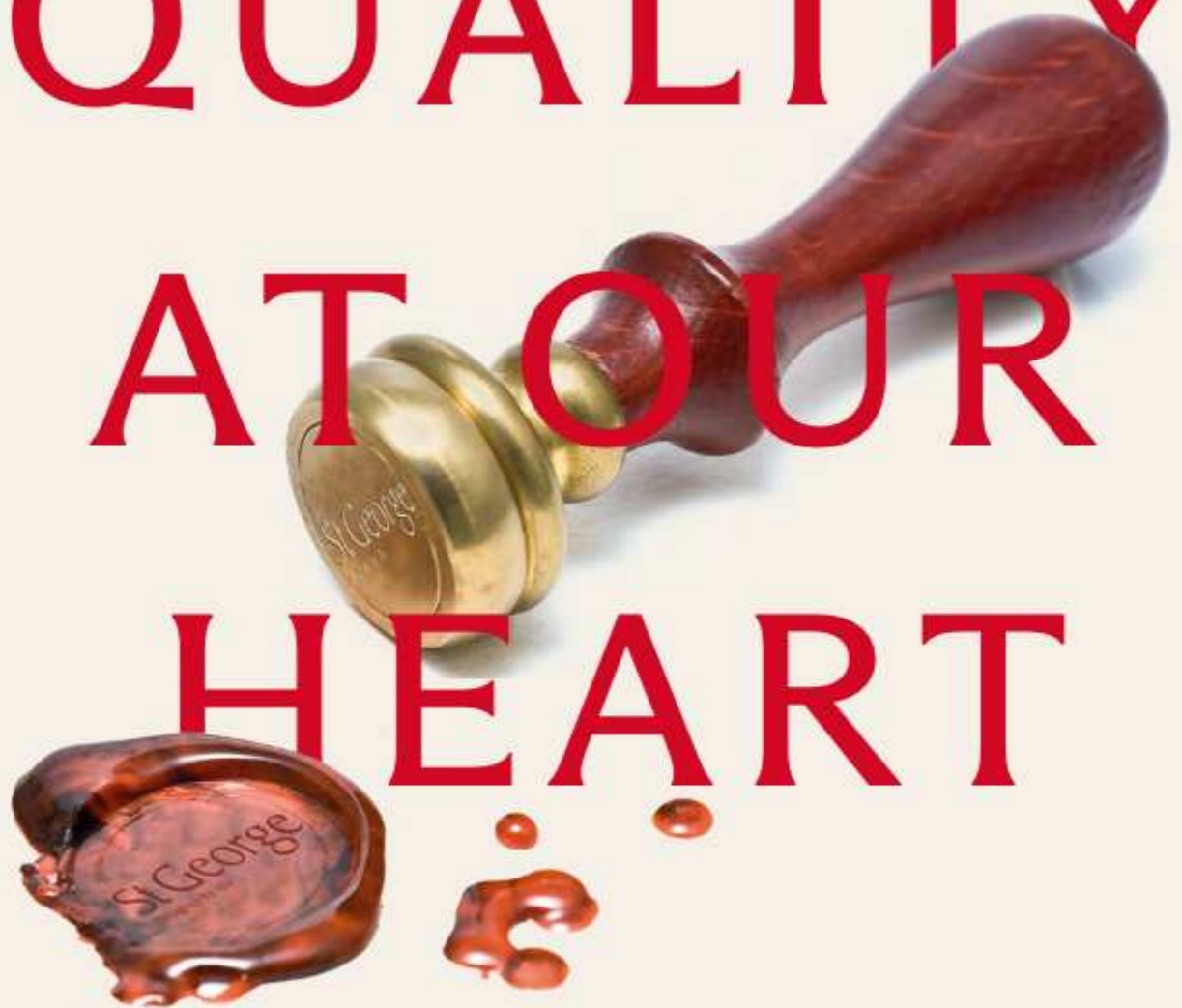
THE MAURETANIA LOUNGE

The Palm Room is just one of the new invigorating spaces, a fresh place to connect with friends. It is a conservatory, inspired by the great Victorian glasshouses, with a contemporary twist.



THE MAURETANIA LOUNGE

QUALITY AT OUR HEART



ST GEORGE &
BERKELEY GROUP



ENSURING SUSTAINABILITY AT LONDON DOCK



PEOPLE, PLANET, PROSPERITY

Sustainability is fundamental to Berkeley's ethos. In simple terms, we want to ensure the long-term health, wellbeing and prosperity of people and the planet. There are a range of ways we are managing and minimising the environmental impact of our operations and delivery of homes and communities. These are the initiatives we have implemented at London Dock



NATURE AND BIODIVERSITY

Parkland, trees, flowers, living roofs, ponds, hedges, gardens – these are the fundamentals of a thriving natural environment that can be enjoyed by everyone, even in the heart of the city. They are all part of our commitment to net biodiversity gain on our developments. Within and around London Dock, we have created natural habitats that encourage wildlife to flourish.



WASTE AND RECYCLING

We actively encourage all residents to reduce their waste wherever possible. In addition to external recycling bins, we provide integrated recycling bins in kitchens to make it easier to separate and recycle waste.



WATER EFFICIENCY

Our homes are designed to high water efficiency standards and are fitted with dual flush WCs, and low-flow taps and showerheads which use less water without compromising convenience and comfort. We also suggest simple steps to reduce water consumption, such as not leaving taps running unnecessarily. Individual homes and apartment buildings also benefit from rainwater harvesting, which is used in gardens and landscaped areas.



ENERGY EFFICIENCY

Efficient use of electricity and gas helps lower fuel bills and reduces carbon emissions. Our homes have been designed to use less energy than a standard home. They have enhanced levels of thermal insulation and air-tightness, and have been fitted with mechanical ventilation units with heat recovery (MVHR). All lighting is low energy and kitchen appliances are selected to deliver high levels of energy efficiency.



SUSTAINABLE MATERIALS

We commit to sourcing the materials for the construction of our buildings in a sustainable and responsible way. All timber and wood-based products used to build your home should be certified to either the Forest Stewardship Council (FSC) or Programme for the Endorsement of Forest Certification (PEFC) scheme. This means it will have come from a responsibly managed forest. Our focus on materials doesn't just stop there – as a business we are committed to measuring and reducing the embodied carbon of our buildings, which where possible, includes sourcing low carbon materials, and those with high levels of recycled content.



NOISE REDUCTION

We can't eliminate noise, but we consider the impact of noise in the design of our homes. We consider external noise, such as from nearby roads, and internal noise including the transfer between rooms and floors. We incorporate measures to reduce the different types of noise wherever possible to create a quieter environment.



CLEAN AIR

It is hard to avoid polluted air, particularly in our cities. Throughout London Dock we have planted trees, shrubs and flower beds to help create a cleaner air environment. Within our homes we also provide mechanical ventilation to filter the internal air.



SUSTAINABLE TRANSPORT

London Dock is situated within walking distance to Zone 1 tube station Tower Hill. The buses and trains provide regular and reliable transport around London and surrounding areas. We also provide cycle paths, secure cycle parks and car charging points to encourage the use of sustainable methods of transport, to help reduce air pollution around the development and the wider area. Promoting walking and cycling as methods of transport also help encourage healthier lifestyles.



STEWARDSHIP

Maintaining our communal open spaces and facilities in perpetuity is an important benefit to the whole community. We work with an on-site team and residents to ensure the development remains in pristine condition.



FUTURE-PROOF DESIGN

From the early stages of design, we assess how our homes will stand up to the future effects of climate change, such as how they will be affected by higher summer temperatures, periods of drought, or more extreme rainfall. We are constantly researching how we can ensure our homes and developments are more resilient to these extremes to understand how we can adapt to future climate change in our future designs.



MYHOME PLUS

MYHOME PLUS IS AN ONLINE SERVICE THAT IS DESIGNED TO HELP YOU MANAGE KEY ASPECTS OF YOUR NEW HOME AT ANY TIME FROM ANYWHERE AROUND THE WORLD. THIS SECTION PROVIDES YOU WITH AN OVERVIEW OF MYHOME PLUS KEY FEATURES TO ENHANCE YOUR CUSTOMER JOURNEY.

KEY FEATURES

This section provides you with an overview of MyHome Plus key features to enhance your customer journey.

1. FILING CABINET

In the Filing Cabinet section, you can immediately access documentation relating to your new home at your own convenience.

2. MEET THE TEAM

This section provides an introduction to your dedicated Sales Consultant and Customer Service Manager. You will be able to view their contact details and contact them directly from the platform.

3. OPTIONS & CHOICES SELECTION

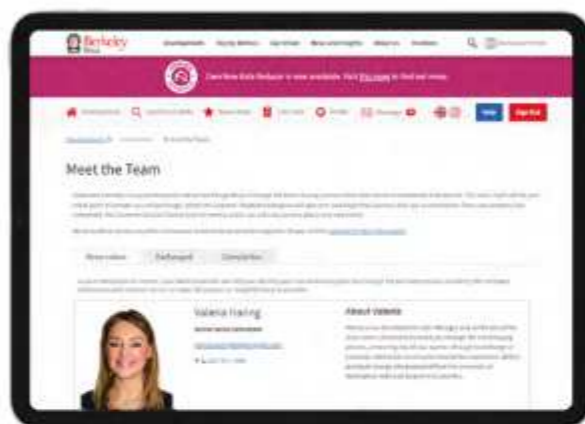
When you buy a home with us, you will have the option to choose some of your home finishes. This will be subject to the development and property building stage but it's a chance to make it feel truly yours. You will be able to see the different options, the selection deadline date and submit your choice in this section of MyHome Plus. See the Next Steps section for further detail on this.

4. CONSTRUCTION PROGRESS

Under this section, regular updates on the construction of your new property will be provided, keeping you up to date on the progress on site and the local area. Your Customer Service Manager will issue regular newsletters and photographs to this section throughout your journey.

5. MY GUIDES

View and download your buying and living guides to support you step-by-step through your journey with us.



NEXT STEPS

STEP 1

Your Sales Consultant will send you instructions to create and validate your MyHome account. Once your account is validated, your Sales Consultant will assign your property to your MyHome account and your account will be upgraded to a MyHome Plus account.

STEP 2

Customer Service will then be in touch to invite you in to our Show Apartment to view the interior selections available for the internal finishes which you have an option to select. If you cannot make it to the appointment, the options can be discussed over the telephone and selected via MyHome Plus. Customer Service will need to receive your choices selection by the deadline date, which will be given in advance.

myHome PLUS



DESIGNED FOR LIFE

AT ST GEORGE, WE ARE COMMITTED TO CREATING GREAT PLACES WHERE PEOPLE LOVE TO LIVE, WORK AND RELAX. HERE, THE HOMES ARE LIGHT-FILLED, ADAPTABLE AND FINISHED TO VERY HIGH STANDARDS. WHERE CAREFULLY PLANNED PUBLIC AREAS ENHANCE WELLBEING AND QUALITY OF LIFE FOR RESIDENTS AND VISITORS. WHERE PEOPLE FEEL A SENSE OF COMMUNITY.

CUSTOMERS DRIVE OUR DECISIONS

We put our customers at the heart of everything we do. First, we strive to understand what our customers want and need – well-built homes, in a pleasant and safe neighbourhood, with plenty of amenities and good transport connections. Then we apply that understanding to all of our planning and design decisions. And for every new development, we challenge ourselves to go further, to improve and innovate, ensuring we satisfy the real needs of our customers in inspiring and sustainable ways.

CHOICE AND DIVERSITY

No two St George customers are the same, so we aim to offer a wide choice of property location, size and type. From central London to major towns and cities; from market towns to rural villages, countryside to the coast – we build in locations our customers love. And whatever home you are looking for, whether that's a city penthouse, a modern studio apartment or traditional family home, you will find the perfect fit for your lifestyle.

QUALITY FIRST TO LAST

Quality is the defining characteristic of St George developments, right down to the very last detail. We choose our locations, style of homes, construction practices, materials and specifications with great care. When you buy a new home from Berkeley you can be safe in the knowledge that it is built to high standards of design and quality, has low environmental impact and that you will receive a professional, efficient and helpful service from us. For extra peace of mind, all new properties come with a 10-year build warranty.

GREEN LIVING

We are committed to creating a better environment within our developments and in the areas that surround them. That's why we build on brownfield sites whenever we can, bringing new life to disused and unloved spaces. We take care to protect the natural environment and enhance biodiversity. All our homes are designed to reduce water and energy consumption, promote recycling and enable residents to choose sustainable transport options.

COMMITMENT TO THE FUTURE

When we plan a development, we take a long-term view of how the community we create can thrive in years to come. Our aim is to permanently enhance the neighbourhoods in which they are located, through intelligent design, quality landscaping, sympathetic architecture or restoration, and high standards of sustainability. We don't just build for today; we build for the future too.



 **Berkeley**
Group
Proud members of
the Berkeley Group

Berkeley
Designed for life
St James
Designed for life

St Edward
Designed for life
St Joseph
Designed for life

St George
Designed for life
St William
Designed for life



CREATED BY ST GEORGE: OUR DIFFERENCE

AT ST GEORGE, WE DESIGN FOR LIFE

Transforming unique parts of the capital is our speciality. We sustainably regenerate previously neglected areas into high-quality and mixed-use housing, creating new spaces where people are both happy and proud to live. London is a city in global demand and uncovering space to create suitable housing to meet that demand is harder than ever. We achieve the seemingly impossible by searching out overlooked and under-appreciated areas that can be transformed into beautiful housing that meets the needs of aspirant city-dwellers. We believe people, partnerships, and a shared vision are key to successfully delivering thoughtfully designed homes and to create thriving communities. We have been designing and building such spaces for decades. We are driven to create a lasting legacy for the capital and its people, through collaboration and partnerships.

OUR VISION IS TO DEVELOP SITES THAT HAVE BEEN CLOSED TO THE PUBLIC FOR DECADES AND RECONNECT THEM TO THE COMMUNITY

We want the places built by St George to be renowned for the quality of their landscape and the open space. The term 'landscape' comes from two words meaning 'to shape a place where people belong'. That idea inspires our approach. The space between buildings is where you create a community and somewhere that is sociable, sustainable and safe. We believe beautifully landscaped open spaces give room to breathe and sit in harmony with our vision for the carefully considered architecture and thoughtfully designed interiors throughout our developments. To pioneer a landscape-led approach to urban developments is hugely important to us. We truly believe these spaces between the buildings are as important as the buildings themselves, where one's wellbeing within that space can be emphasised through positive design.

ST GEORGE AIMS TO BUILD YOUR HOME TO A HIGH STANDARD OF DESIGN AND QUALITY AND HAS OVER 40 YEARS OF EXPERIENCE OF DELIVERING

When you buy a new home from us it comes with a 10-year building warranty – the first two years of which are covered by St George. However, over and above this, we will take a reasonable approach to resolving issues, even if they fall outside of the warranty criteria or time periods. In other words, we will stand by our product and work with you to find an appropriate, fair and reasonable resolution to any issues that may arise in the future. All of our customers are provided with a commitment that when they buy a new home from St George, they can be safe in the knowledge that it is built to a high standard of design and quality, has low environmental impact and that they will enjoy an exceptional customer experience.

CUSTOMERS

Choosing your home is one of the most exciting and important decisions you can make, but it is also a challenge. From location to amenities, connections to education, there are so many factors to weigh up.

At St George, we understand what you're looking for in a new home and we are dedicated to designing and building exceptional places that meet your needs.

We design for everyone: from families to first-time buyers, students to retirement communities, always considering the ever-changing need for space innovation and integrated technology. The service we provide goes beyond the contract, committing to the developments we create and our long-term involvement with those who live there. To us, places are about people.



TRANSFORMING TOMORROW

At Berkeley Group our passion and purpose is to build quality homes, strengthen communities and improve people's lives. We are innovating, pushing boundaries and taking action to ensure we have a long-term, positive impact that is good for our customers, the communities we touch, our business and the world around us. We transform underused sites into exceptional places and we're also transforming the way we work: embracing technology and raising standards, as we continue to deliver an outstanding customer experience and create high-quality homes that delight our customers.

Our Vision 2030 is our 10-year plan which sets out how we will achieve this.

TRANSFORMING PLACES

Working with local people and partners we create welcoming and connected neighbourhoods where you can be proud to live.

TRANSFORMING LIFESTYLES

Taking action on climate change and giving you ways to live more sustainably. We're building efficient homes that use less energy over their lifetime, with sustainable travel choices on the doorstep.

TRANSFORMING NATURE

Creating beautiful places with habitats that help nature to thrive, meaning that every site is left with more nature than when we began.

TRANSFORMING FUTURES

Helping people to reach their potential through apprenticeships and training, and programmes supported by the Berkeley Foundation.

OUR VISION 2030 TRANSFORMING TOMORROW

Please scan this QR code for more information on how we are TRANSFORMING TOMORROW



CUSTOMER RELATIONS

HERE IS WHAT YOU CAN EXPECT:

- From the day you reserve – until the day you complete – we'll update you regularly on progress.
- You will be able to create your MyHome Plus account and access this online platform to view all the information about the development, your property, the construction progress and the buying process.
- Sustainability is high on any responsible builder's agenda. We promise to fully communicate the environmental features of our developments to all of our customers.
- Our Customer Relations Manager will present a selection of designer-conceived colour palettes to help you find the interior finish that most suits your style.
- We personally hand over your key on completion day and make sure everything is to your satisfaction.
- Upon handover, we'll meet you on site to demonstrate all the functions and facilities of your new apartment.
- The 2-year warranty with 24-hour emergency service has a dedicated customer service telephone number and from the 3rd to the 10th year you'll have the added security protection of a 10-year building warranty.
- Finally, we'll contact you after 7 days, at 4 weeks and 7 months after you move in, to make sure everything continues – perfectly.



WE WANT TO ENSURE YOU ARE HAPPY WITH EVERY ASPECT OF YOUR NEW HOME, SO WE LOOK AFTER OUR CUSTOMERS AT EVERY STAGE WITH EXPERT ADVICE, ATTENTION TO DETAIL AND CONTINUOUS COMMUNICATION. FROM EXCHANGE OF CONTRACTS, YOUR DEDICATED ST GEORGE CUSTOMER SERVICE REPRESENTATIVE WILL HELP WITH ANY QUESTIONS YOU MAY HAVE.



THE BERKELEY FOUNDATION

**WE ARE COMMITTED TO MAKING A
REAL AND LASTING DIFFERENCE TO
THE COMMUNITIES WE SERVE**

The Berkeley Foundation supports voluntary organisations in tackling long-term social issues in their local community. Working together, we help people choose a different life path, develop confidence and skills, and find hope for the future. Since we established the Berkeley Foundation in 2011, we have committed many millions of pounds to hundreds of charities and organisations. A significant proportion of our donations are raised through the tireless efforts of our own staff.



berkeleyfoundation.org.uk
berkeleygroup.co.uk



PHOTOGRAPHY DEPICTS BERKELEY FOUNDATION AND IS INDICATIVE ONLY.



PHOTOGRAPHY DEPICTS THE BOURN ACADEMY, BERKELEY FOUNDATION AND IS INDICATIVE ONLY.

CONTACT

LONDON DOCK MARKETING SUITE
& SHOW APARTMENT
9 ARRIVAL SQUARE
LONDON E1W 2AA

MONDAY TO SATURDAY: 10AM - 6PM
SUNDAY: 10AM - 5PM

CALL: +44 (0)20 7971 7880
EMAIL: sales@londondock.co.uk
VISIT: londondock.co.uk
FOLLOW: @london_dock



Disclaimer: The information in this document is indicative and is intended to act as a guide only as to the finished product. Accordingly, due to St George policy of continuous improvement, the finished product may vary from the information provided. It may not be possible to provide the exact materials as referred to in the brochure. In such cases a suitable alternative will be provided. St George reserves the right to make these changes as required. These particulars should not be relied upon as statements of fact or representations and applicants must satisfy themselves by inspection or otherwise as to their correctness. This information does not constitute a contract or warranty. The dimensions given on plans are subject to minor variations and are not intended to be used for carpet sizes, appliance sizes or items of furniture. Jade Wharf, London Dock is a marketing name and will not necessarily form part of the approved postal address. Applicants are advised to contact St George to ascertain the availability of any particular property. Photography and computer generated images depict London Dock and are indicative only. Timings are approximate. Source: www.sfl.gov.uk Source: www.google.co.uk M006/ASCA/1025

Jade Wharf (Block G) at London Dock has been granted the following planning permissions: PA/19/00764 - Approved 20th November 2019, PA/21/00715 - Approved 27th August 2021, PA/22/02666 - Approved 30th June 2023, PA/24/00092 - Approved 3rd May 2023. Through the purchase of a property at London Dock, the buyer is acquiring an apartment with a 999-year leasehold from July 1989. Purchasing uncompleted properties situated outside Hong Kong is complicated and contains risk. You should review all relevant information and documents carefully before making a purchase decision. If in doubt, please seek independent professional advice before making a purchase decision. St George Plc, Registered in England & Wales with Company Registration Number 02590468 Registered Office Berkeley House, 19 Portsmouth, Road, Cobham, Surrey, KT11 1JG LONDON



LONDONDock.CO.UK

