



INTRODUCING THE STUNNING

Bedivere apartments

An exquisite collection of 1, 2 and 3 bedroom apartments situated in an outstanding position overlooking historic Winchester. In one of the city's most affluent and desirable locations, Knights Quarter boasts an impressive entrance boulevard, surrounded by magnificent grounds, combining striking architecture, spaciouly designed luxurious interiors and access to private courtyard gardens.

Development Plan



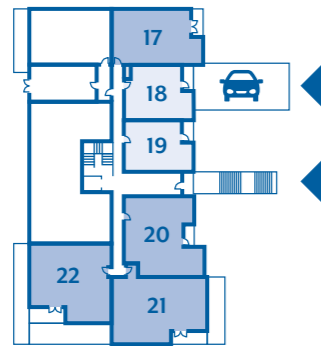
The site plan is indicative only and subject to change [and subject to planning]. In line with our policy of continuous improvement we reserve the right to alter the layout, building style, landscaping and specification at anytime without notice.



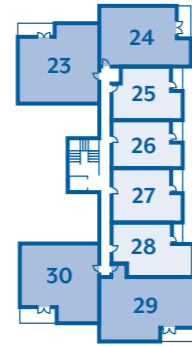
BEDIVERE APARTMENTS

Welcome to the Bedivere Apartments. A stunning collection of 1, 2 and 3 bedroom apartments located at the heart of Knights Quarter.

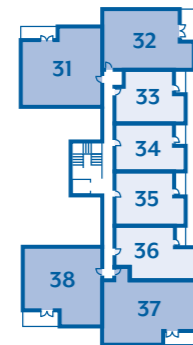
GROUND FLOOR



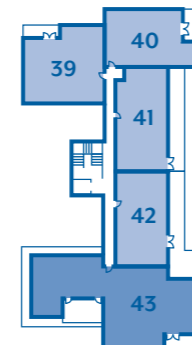
FLOOR 1



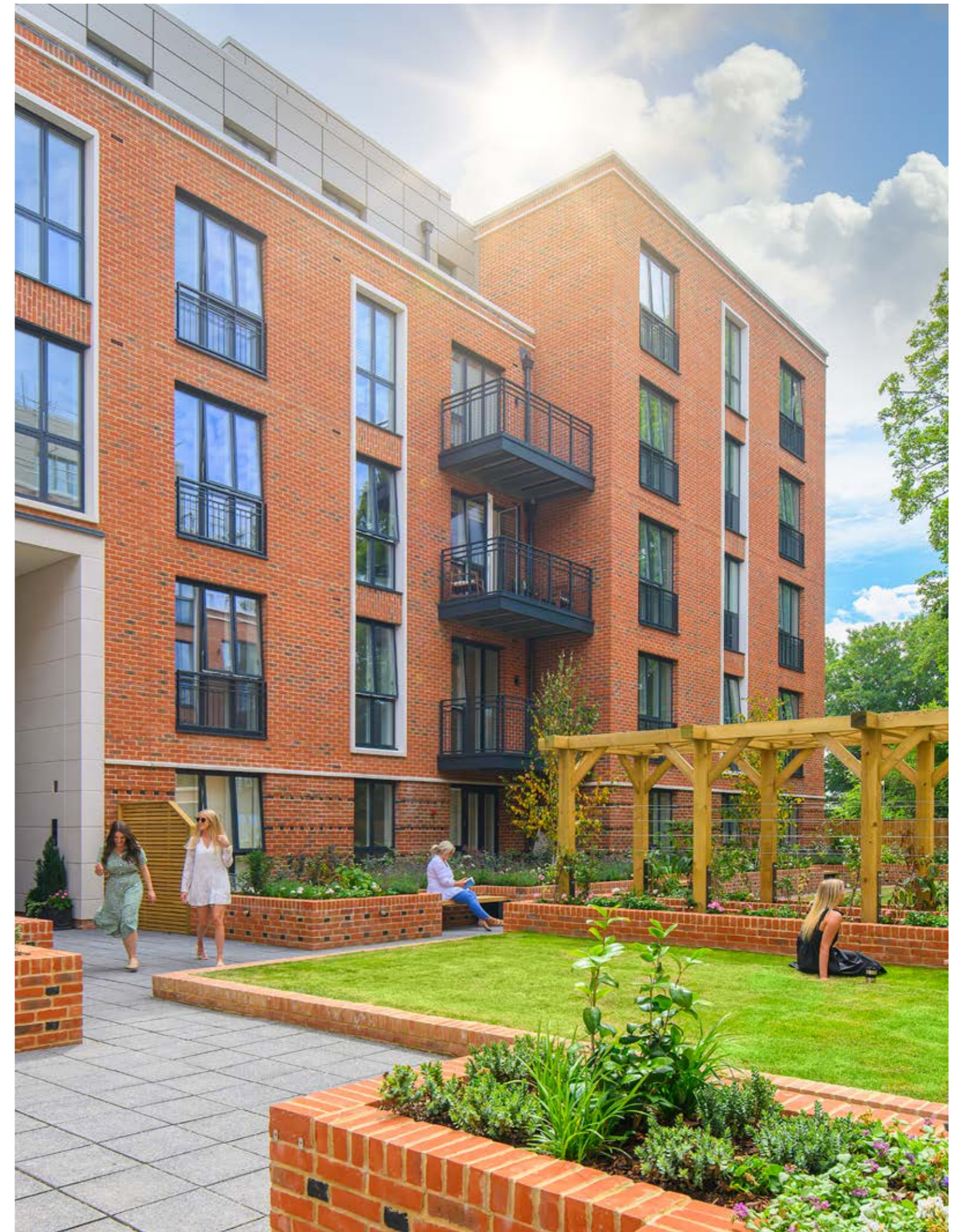
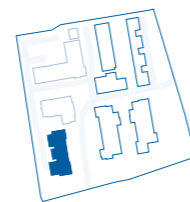
FLOOR 2



FLOOR 3



- 1 BEDROOM
 APARTMENTS
- 2 BEDROOM
 APARTMENTS
- 3 BEDROOM
 APARTMENTS



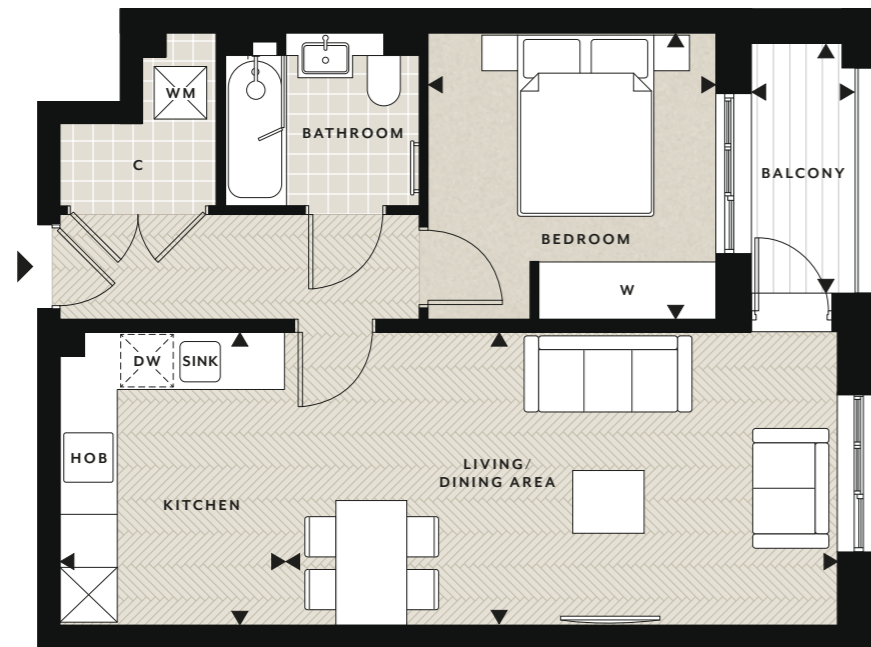
1 bedroom apartment

GROUND, 1ST, 2ND FLOORS · PLOTS 18, 25, 33

1 bedroom apartment

GROUND, 1ST, 2ND FLOORS · PLOTS 19, 26, 34

NORTH



NORTH



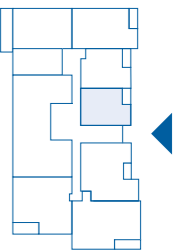
ACCOMMODATION

Living / Dining Area	6.26m x 3.32m	20'6" x 10'11"
Kitchen	3.32m x 2.53m	10'11" x 8'4"
Bedroom	3.25m x 3.25m	10'8" x 10'7"
Balcony	2.81m x 1.02m	9'3" x 3'4"
Total Internal Area	53.27 sq m	573 sq ft

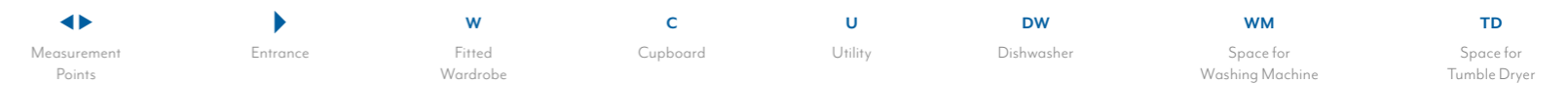


ACCOMMODATION

Living / Dining Area	6.17m x 3.35m	20'3" x 11'0"
Kitchen	3.35m x 2.59m	11'0" x 8'6"
Bedroom	4.00m x 3.13m	13'1" x 10'3"
Balcony	2.71m x 1.17m	8'11" x 3'10"
Total Internal Area	53.22 sq m	573 sq ft



Floorplans shown for The Bedivere Apartments at Knights Quarter are for approximate measurements only. Exact layouts and sizes may vary. All measurements may vary within a tolerance of 5%. The dimensions are not intended to be used for carpet sizes, appliance sizes or items of furniture. Floorplans have been sized to fit the page, as a result this plan may not be at the same scale as plans on other pages.

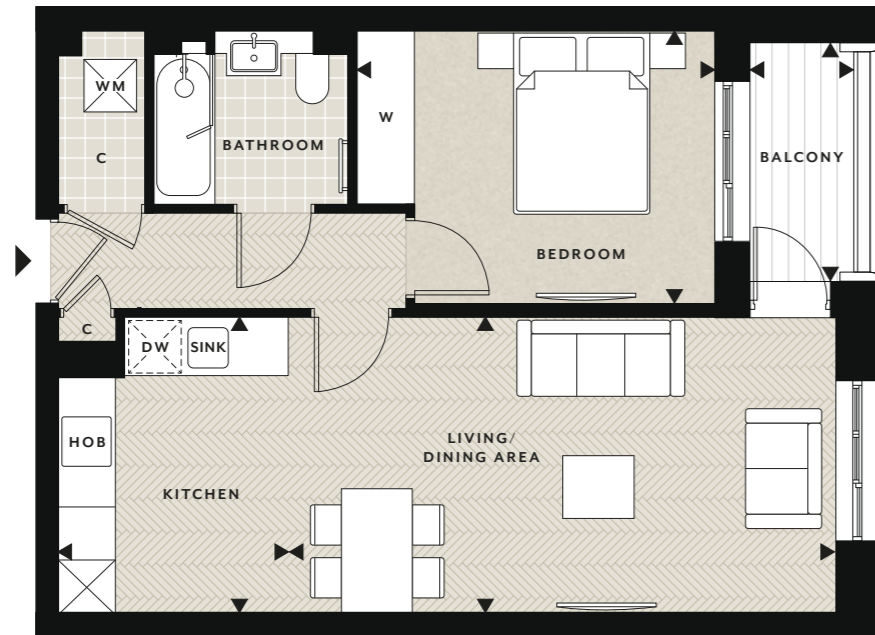


Floorplans shown for The Bedivere Apartments at Knights Quarter are for approximate measurements only. Exact layouts and sizes may vary. All measurements may vary within a tolerance of 5%. The dimensions are not intended to be used for carpet sizes, appliance sizes or items of furniture. Floorplans have been sized to fit the page, as a result this plan may not be at the same scale as plans on other pages.

1 bedroom apartment

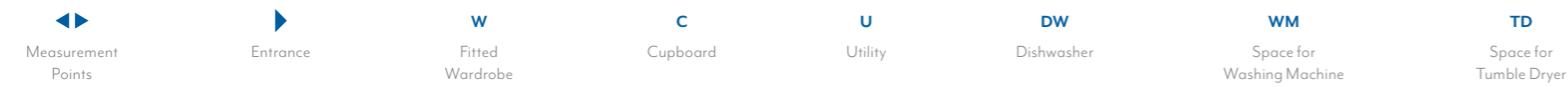
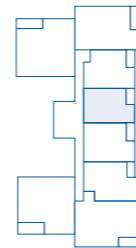
1ST, 2ND FLOORS • PLOTS 27, 35

NORTH



ACCOMMODATION

Living / Dining Area	6.20m x 3.35m	20'4" x 11'0"
Kitchen	3.35m x 2.59m	11'0" x 8'6"
Bedroom	4.04m x 3.08m	13'3" x 10'1"
Balcony	2.71m x 1.18m	8'11" x 3'10"
Total Internal Area	53.42 sq m	575 sq ft

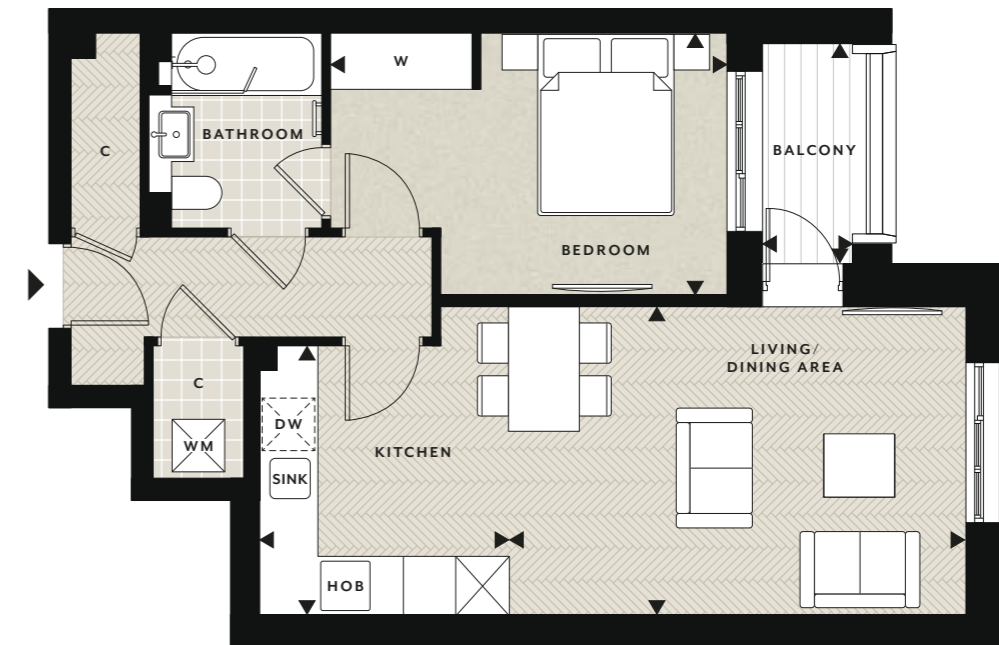


Floorplans shown for The Bedivere Apartments at Knights Quarter are for approximate measurements only. Exact layouts and sizes may vary. All measurements may vary within a tolerance of 5%. The dimensions are not intended to be used for carpet sizes, appliance sizes or items of furniture. Floorplans have been sized to fit the page, as a result this plan may not be at the same scale as plans on other pages.

1 bedroom apartment

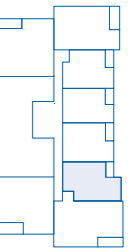
1ST, 2ND FLOORS • PLOTS 28, 36

NORTH



ACCOMMODATION

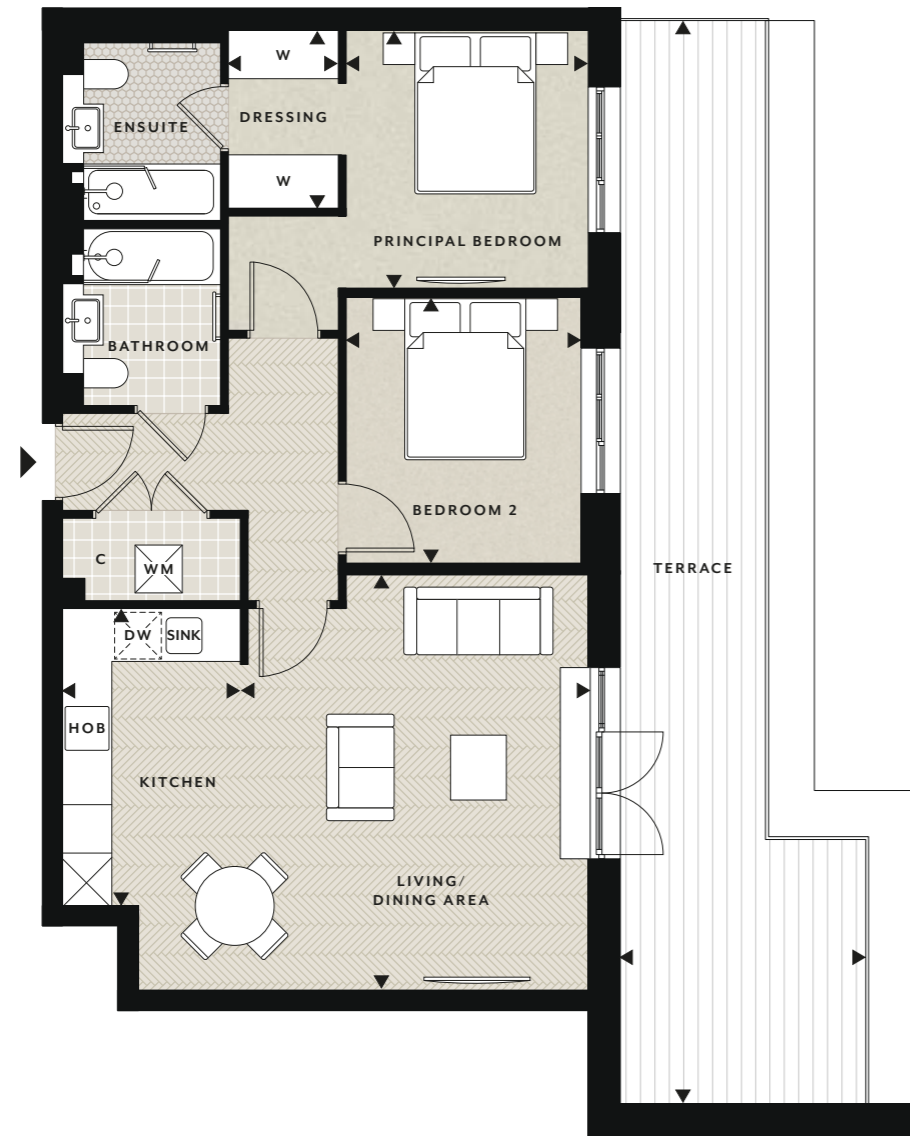
Living / Dining Area	5.16m x 3.48m	16'11" x 11'5"
Kitchen	3.03m x 2.82m	9'11" x 9'3"
Bedroom	4.48m x 2.95m	14'8" x 9'8"
Balcony	2.49m x 1.02m	8'2" x 3'4"
Total Internal Area	53.82 sq m	579 sq ft



Floorplans shown for The Bedivere Apartments at Knights Quarter are for approximate measurements only. Exact layouts and sizes may vary. All measurements may vary within a tolerance of 5%. The dimensions are not intended to be used for carpet sizes, appliance sizes or items of furniture. Floorplans have been sized to fit the page, as a result this plan may not be at the same scale as plans on other pages.

2 bedroom apartment

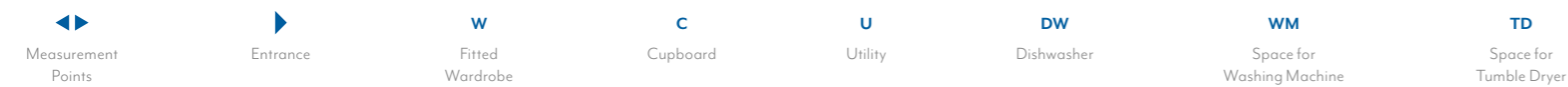
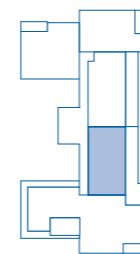
3RD FLOOR · PLOT 42



ACCOMMODATION

Living / Dining Area	5.16m x 4.32m	16'11" x 14'2"
Kitchen	3.68m x 2.20m	12'1" x 7'3"
Principal Bedroom	3.19m x 3.00m	10'6" x 9'10"
Dressing Room	2.19m x 1.36m	7'2" x 4'6"

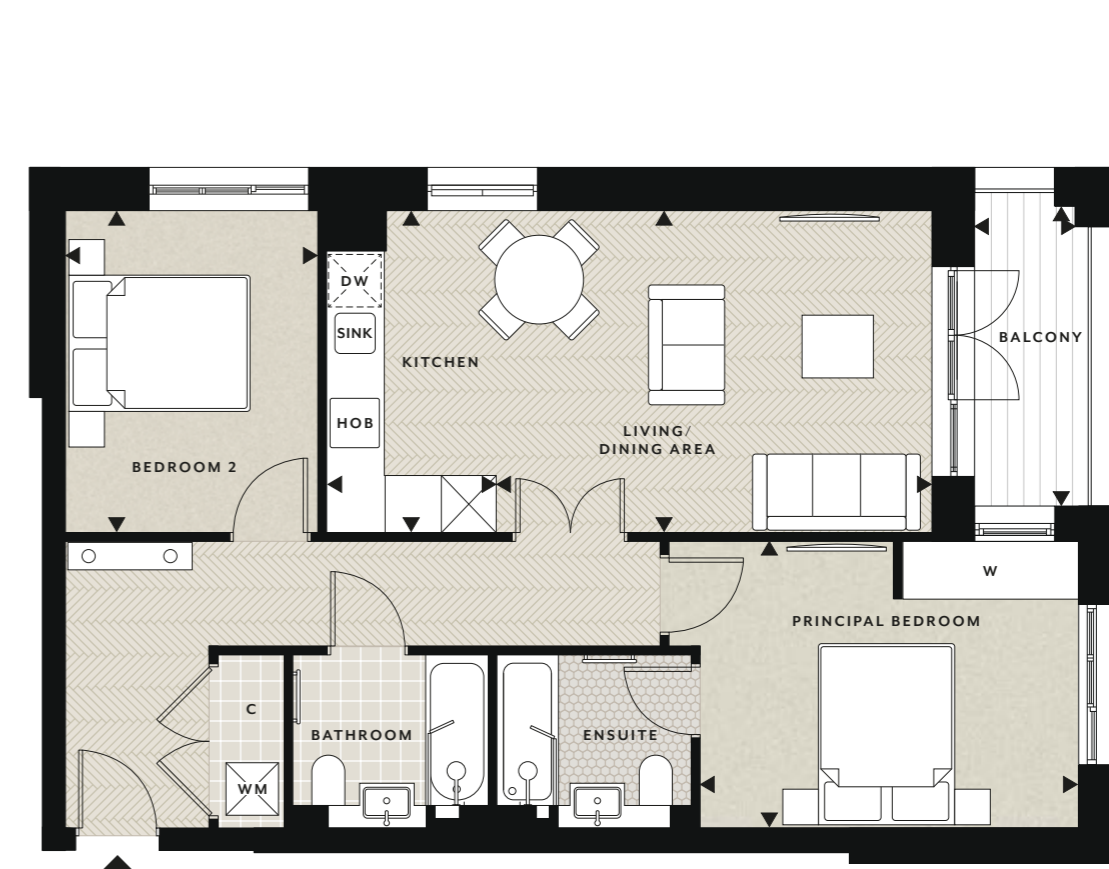
Bedroom 2	3.31m x 2.91m	10'10" x 9'7"
Terrace	13.41m x 3.04m	44'0" x 10'0"
Total Internal Area	75.91 sq m	817 sq ft



Floorplans shown for The Bedivere Apartments at Knights Quarter are for approximate measurements only. Exact layouts and sizes may vary. All measurements may vary within a tolerance of 5%. The dimensions are not intended to be used for carpet sizes, appliance sizes or items of furniture. Floorplans have been sized to fit the page, as a result this plan may not be at the same scale as plans on other pages.

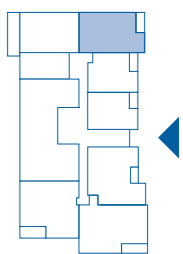
2 bedroom apartment

GROUND, 1ST, 2ND, 3RD FLOORS · PLOTS 17, 24, 32, 40



ACCOMMODATION

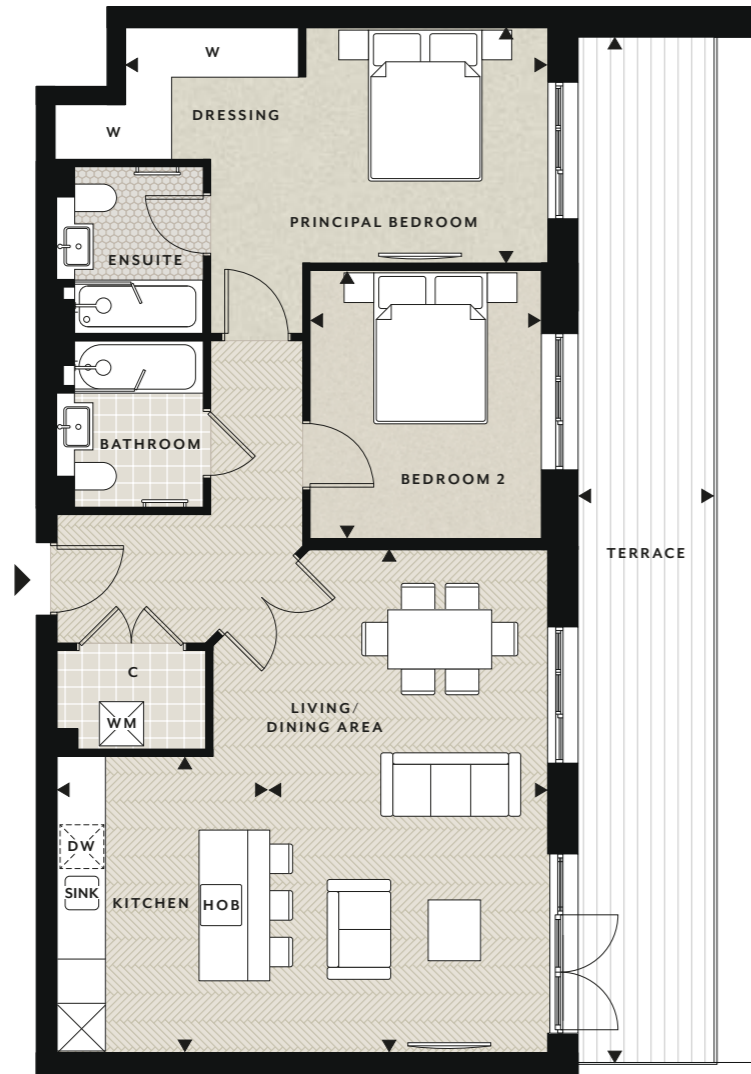
Living / Dining Area	4.92m x 3.64m	16'2" x 11'11"
Kitchen	3.64m x 1.92m	11'11" x 6'4"
Principal Bedroom	4.28m x 3.24m	14'1" x 10'8"
Bedroom 2	3.64m x 2.85m	11'11" x 9'4"
Balcony	3.38m x 1.16m	11'1" x 3'10"
Total Internal Area	73.69 sq m	793 sq ft



Floorplans shown for The Bedivere Apartments at Knights Quarter are for approximate measurements only. Exact layouts and sizes may vary. All measurements may vary within a tolerance of 5%. The dimensions are not intended to be used for carpet sizes, appliance sizes or items of furniture. Floorplans have been sized to fit the page, as a result this plan may not be at the same scale as plans on other pages.

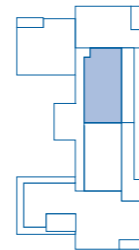
2 bedroom apartment

3RD FLOOR · PLOT 41



ACCOMMODATION

Living / Dining Area	6.65m x 3.69m	21'10" x 12'1"
Kitchen	3.92m x 2.80m	12'0" x 9'2"
Principal Bedroom	5.58m x 3.11m	18'4" x 10'2"
Bedroom 2	3.55m x 3.05m	11'8" x 10'0"
Terrace	13.56m x 1.80m	44'6" x 5'11"
Total Internal Area	86.83 sq m	935 sq ft



Floorplans shown for The Bedivere Apartments at Knights Quarter are for approximate measurements only. Exact layouts and sizes may vary. All measurements may vary within a tolerance of 5%. The dimensions are not intended to be used for carpet sizes, appliance sizes or items of furniture. Floorplans have been sized to fit the page, as a result this plan may not be at the same scale as plans on other pages.

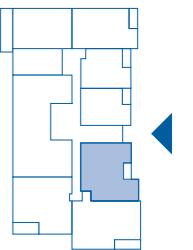
2 bedroom apartment

GROUND FLOOR · PLOT 20



ACCOMMODATION

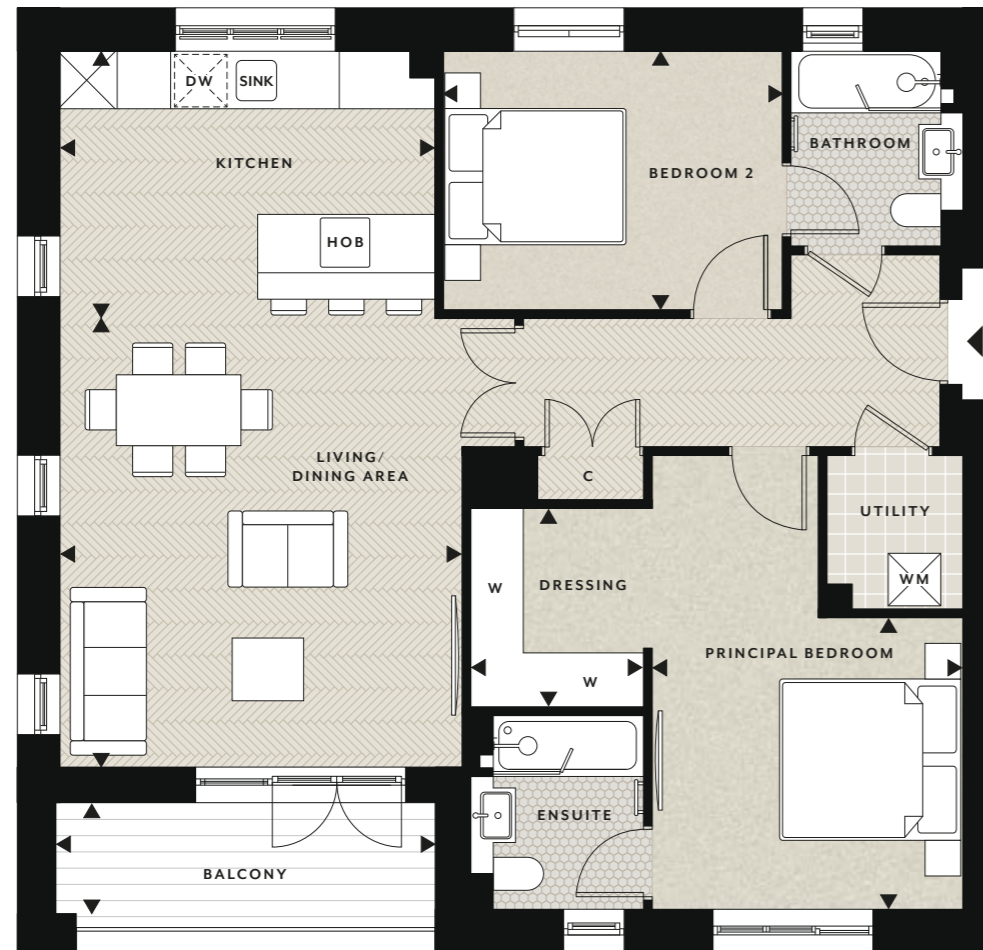
Living / Dining Area	7.92m x 3.56m	26'0" x 11'8"
Kitchen	3.72m x 2.20m	12'2" x 7'3"
Principal Bedroom	4.19m x 3.35m	13'9" x 11'0"
Bedroom 2	4.02m x 3.07m	13'2" x 10'1"
Balcony	2.48m x 1.02m	8'2" x 3'4"
Total Internal Area	85.33 sq m	918 sq ft



Floorplans shown for The Bedivere Apartments at Knights Quarter are for approximate measurements only. Exact layouts and sizes may vary. All measurements may vary within a tolerance of 5%. The dimensions are not intended to be used for carpet sizes, appliance sizes or items of furniture. Floorplans have been sized to fit the page, as a result this plan may not be at the same scale as plans on other pages.

2 bedroom apartment

GROUND, 1ST, 2ND FLOORS • PLOTS 22, 30, 38



NORTH



ACCOMMODATION

Living / Dining Area	5.08m x 4.54m	16'8" x 14'11"
Kitchen	4.23m x 3.02m	13'11" x 9'11"
Principal Bedroom	3.52m x 3.30m	11'7" x 10'10"
Dressing Room	2.23m x 1.96m	7'4" x 6'5"

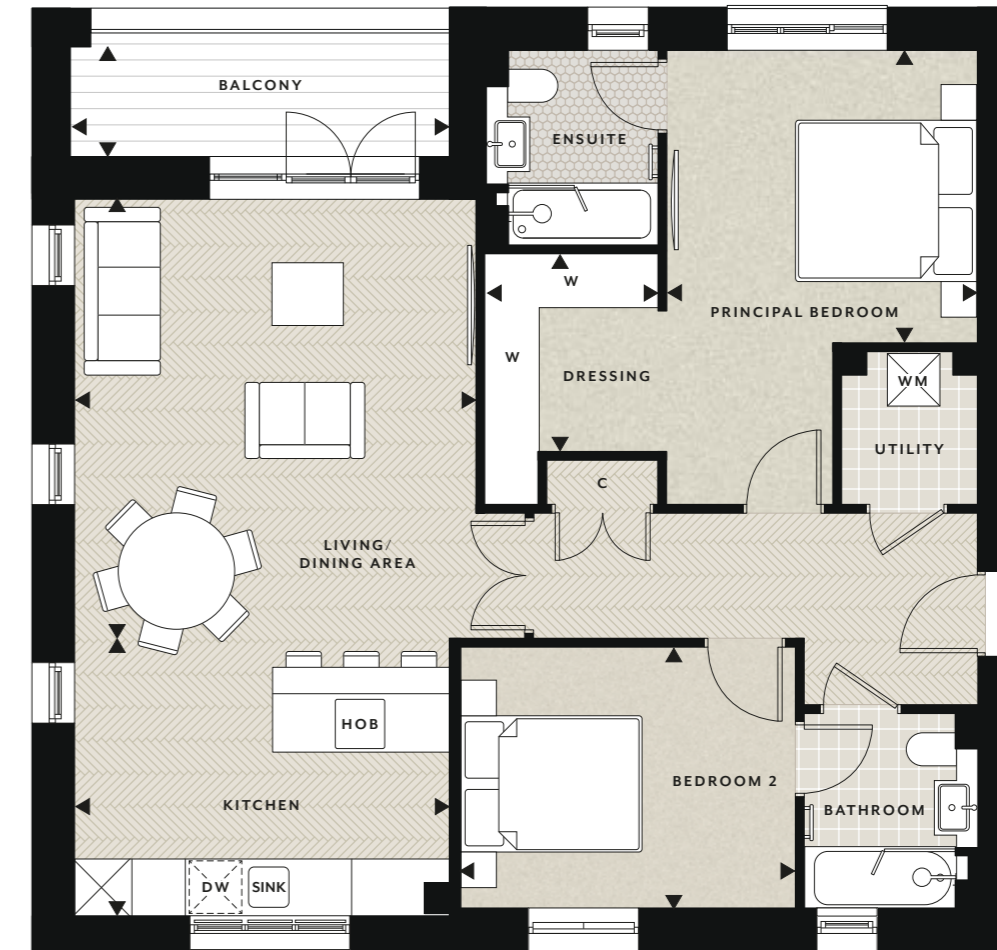
Bedroom 2	3.83m x 2.92m	12'7" x 9'7"
Balcony	4.29m x 1.25m	14'1" x 4'1"
Total Internal Area	91.11 sq m	981 sq ft



Floorplans shown for The Bedivere Apartments at Knights Quarter are for approximate measurements only. Exact layouts and sizes may vary. All measurements may vary within a tolerance of 5%. The dimensions are not intended to be used for carpet sizes, appliance sizes or items of furniture. Floorplans have been sized to fit the page, as a result this plan may not be at the same scale as plans on other pages.

2 bedroom apartment

1ST, 2ND, 3RD FLOORS • PLOTS 23, 31, 39

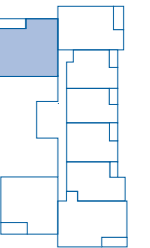


NORTH



ACCOMMODATION

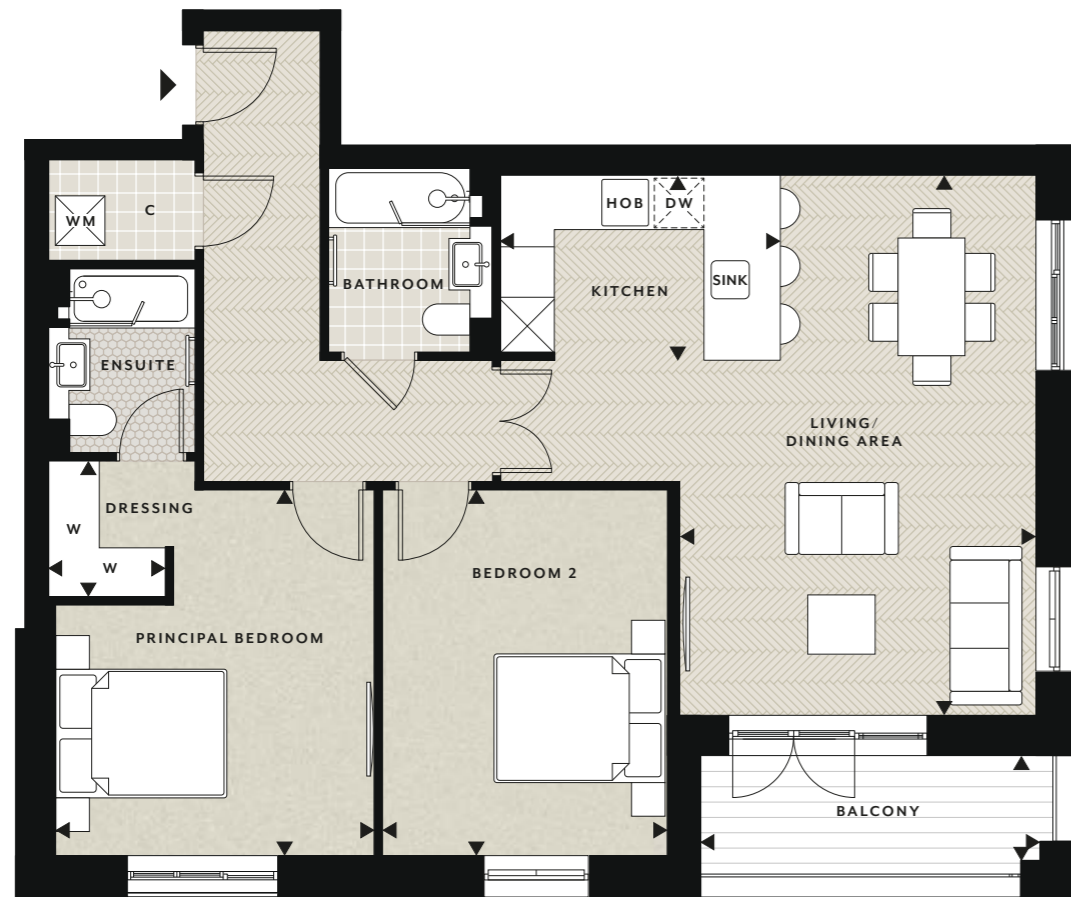
Living / Dining Area	4.96m x 4.54m	16'3" x 14'11"
Kitchen	4.23m x 3.15m	13'11" x 10'4"
Principal Bedroom	3.52m x 3.30m	11'7" x 10'10"
Bedroom 2	3.78m x 2.96m	12'5" x 9'9"
Balcony	4.29m x 1.24m	14'1" x 4'1"
Total Internal Area	91.67 sq m	987 sq ft



Floorplans shown for The Bedivere Apartments at Knights Quarter are for approximate measurements only. Exact layouts and sizes may vary. All measurements may vary within a tolerance of 5%. The dimensions are not intended to be used for carpet sizes, appliance sizes or items of furniture. Floorplans have been sized to fit the page, as a result this plan may not be at the same scale as plans on other pages.

2 bedroom apartment

GROUND, 1ST, 2ND FLOORS • PLOTS 21, 29, 37



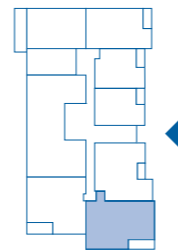
NORTH



ACCOMMODATION

Living / Dining Area	6.46m x 4.27m	21'2" x 14'0"
Kitchen	3.35m x 2.22m	11'0" x 7'3"
Principal Bedroom	4.38m x 3.82m	14'4" x 12'6"
Dressing Room	1.63m x 1.40m	5'4" x 4'7"

Bedroom 2	4.38m x 3.40m	14'4" x 11'2"
Balcony	4.06m x 1.25m	13'4" x 4'1"
Total Internal Area	91.49 sq m	985 sq ft



Floorplans shown for The Bedivere Apartments at Knights Quarter are for approximate measurements only. Exact layouts and sizes may vary. All measurements may vary within a tolerance of 5%. The dimensions are not intended to be used for carpet sizes, appliance sizes or items of furniture. Floorplans have been sized to fit the page, as a result this plan may not be at the same scale as plans on other pages.

3 bedroom apartment

3RD FLOOR • PLOT 43



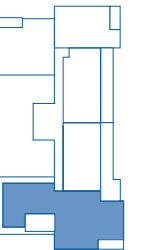
NORTH



ACCOMMODATION

Living Area	5.45m x 5.38m	17'11" x 17'8"
Dining Area	4.20m x 3.80m	13'9" x 12'6"
Kitchen	3.80m x 3.45m	12'6" x 11'4"
Principal Bedroom	4.27m x 3.65m	14'0" x 12'0"
Dressing Room	3.00m x 2.17m	9'10" x 7'1"

Bedroom 2	4.21m x 3.69m	13'10" x 12'1"
Bedroom 3	3.40m x 2.80m	11'2" x 9'2"
Balcony	4.06m x 1.25m	13'4" x 4'1"
Terrace	4.80m x 2.54m	15'9" x 8'4"
Total Internal Area	162.55 sq m	1750 sq ft



Floorplans shown for The Bedivere Apartments at Knights Quarter are for approximate measurements only. Exact layouts and sizes may vary. All measurements may vary within a tolerance of 5%. The dimensions are not intended to be used for carpet sizes, appliance sizes or items of furniture. Floorplans have been sized to fit the page, as a result this plan may not be at the same scale as plans on other pages.

BEDIVERE SPECIFICATION

Individually designed kitchen

- Contemporary styled kitchen
- Karonia Mistral Aria work surface with feature tiled splashback
- Siemens Built-in multi-functional fan assisted oven
- Siemens Built-in microwave oven
- Siemens 60cm Induction hob
- Integrated extractor (chimney extractor where hob is within the island unit)
- Siemens Integrated fridge/freezer
- Caple Integrated wine cooler
- Siemens Integrated dishwasher (selected plots)
- Space and plumbing for separate washer/dryer within utility cupboard
- Stainless steel single bowl sink with mixer tap
- LED under wall unit lighting
- Chrome power sockets above worktops

PENTHOUSE SPECIFICATION

- Silestone work surface
- Stainless Steel one and a half bowl sink
- Miele Built-in multi-functional fan assisted oven
- Miele Built-in combination microwave oven
- Miele 76cm Induction hob
- Space and plumbing for separate washer/dryer within utility cupboard
- Plots with separate utility rooms incorporate co-ordinating cabinetry with laminated work surface and plumbing for washer/dryer



Quality bathrooms

- Contemporary styled bathrooms with white sanitaryware
- Mistral counter tops
- Washbasin with deck mounted taps
- Bespoke cabinetry to all bathrooms with mirror above and feature lighting
- Walk-in shower with fixed head to principal ensuite
- Bath with shower and screen to bathroom
- Bath with shower when separate walk-in/enclosed shower is included within bathroom/ensuite
- WC with dual flush plate, concealed cistern and soft close seat
- Chrome heated towel rail to all bathrooms
- Ceramic wall tiles to selected areas

Heating, electrical & lighting

- Electric panel radiators with individual thermostat with integrated timer
- Centralized mechanical extract ventilation to kitchen, bathroom and ensuite(s)
- White finished switches and sockets
- Shaver sockets provided to bathroom and ensuite(s)
- LED downlights to hall, kitchen/living area, all bedrooms and bathrooms
- LED pendant lighting to dining area



SHOW APARTMENT PHOTOGRAPHY IS INDICATIVE ONLY

Interior finishes

- Two panelled entrance door in wood finish with satin brass handle
- Two panel satin white finished door with brushed nickel or brass finish door furniture
- Full height wardrobes with shaker hinged doors or walk in wardrobe to the principal bedroom (refer to individual apartment drawing)
- Satin paint finish to all internal joinery
- Herringbone laminate wood effect flooring to hall and kitchen/living/dining area
- Tiled floor to bathrooms
- Fitted carpets to all bedrooms

PENTHOUSE SPECIFICATION

- Feature tiled floor to entrance hall
- Painted Timber staircase with twisted spindle leading to sun room with glass balustrade to top section entering sun room (where applicable)



Communal areas

- Video door entry phone system linked from entrance door
- Clear toughened glass finish balustrades with stainless steel handrail and supports from basement to first floor. Metal balustrade and handrail to all other floors
- Communal secure postal boxes located on ground floor
- Tiled entrance hall, with carpeted upper floor, stairs and landings
- Lift to all apartments finished in stainless steel with mirror and tiled floor
- Emergency telephone to lift
- 13 amp single power sockets (for cleaning equipment)
- Lighting controlled by movement sensors
- Mains operated smoke detectors to all floors
- Residents Gymnasium
- Secure cycle storage area
- Communal satellite dish
- External lighting, wall mounted downlights to balconies and terraces
- Landscaped public areas
- Enclosed refuse and additional communal cycle storage
- Landlords external water supply
- Secure basement parking provided for apartments and penthouses
- Infrastructure to support electric car charging
- Concierge Service

Security and peace of mind

- High security apartment entrance door with multi point locking system
- Video entry phone system to communal entrance via panel in hallway
- Mains fed smoke detector with battery back up, fitted to hall
- 10 Year NHBC Buildmark Scheme
- 2 year Berkeley warranty



SHOW APARTMENT PHOTOGRAPHY IS INDICATIVE ONLY

Home entertainment & communications

- TV points to living and all bedrooms
- Wired for Sky Q to living area
- Communal Digital TV aerial/Satellite dish and distribution amplifier provided
- Telephone point to living room
- Cat 6 pre-wired Home Network points provided to living and principal bedroom in two bedroom apartments and some one bed apartments (refer to individual apartment drawings)
- USB Charging Points provided to kitchen and all bedrooms

Computer generated images are indicative only. Your attention is drawn to the fact that in rare circumstances it may not be possible to obtain the exact products or materials referred to in the specification. Berkeley reserves the right to alter, amend or update the specification, which may include changes in the colour, material and/or brand specified. In such cases, a similar alternative will be provided. Berkeley reserves the right to make these changes as required. A number of choices and options are available to personalise your home. Choices and options are subject to timeframes, availability and change.



SHOW APARTMENT PHOTOGRAPHY IS INDICATIVE ONLY

Transforming tomorrow

At Berkeley Group our passion and purpose is to build quality homes, strengthen communities and improve people's lives. We are innovating, pushing boundaries and taking action to ensure we have a long-term, positive impact that is good for our customers, the communities we touch, our business and the world around us.

We transform underused sites into exceptional places and we're also transforming the way we work; embracing technology and raising standards, as we continue to deliver an outstanding customer experience and create high-quality homes that delight our customers.

Our Vision 2030 is our ten year plan which sets out how we will achieve this.



TRANSFORMING PLACES

Working with local people and partners we create welcoming and connected neighbourhoods where you can be proud to live.



TRANSFORMING LIFESTYLES

Taking action on climate change and giving you ways to live more sustainably. We're building efficient homes that use less energy over their lifetime, with sustainable travel choices on the doorstep.



TRANSFORMING NATURE

Creating beautiful places with habitats that help nature to thrive, meaning that every site is left with more nature than when we began.



TRANSFORMING FUTURES

Helping people to reach their potential through apprenticeships and training, and programmes supported by the Berkeley Foundation.



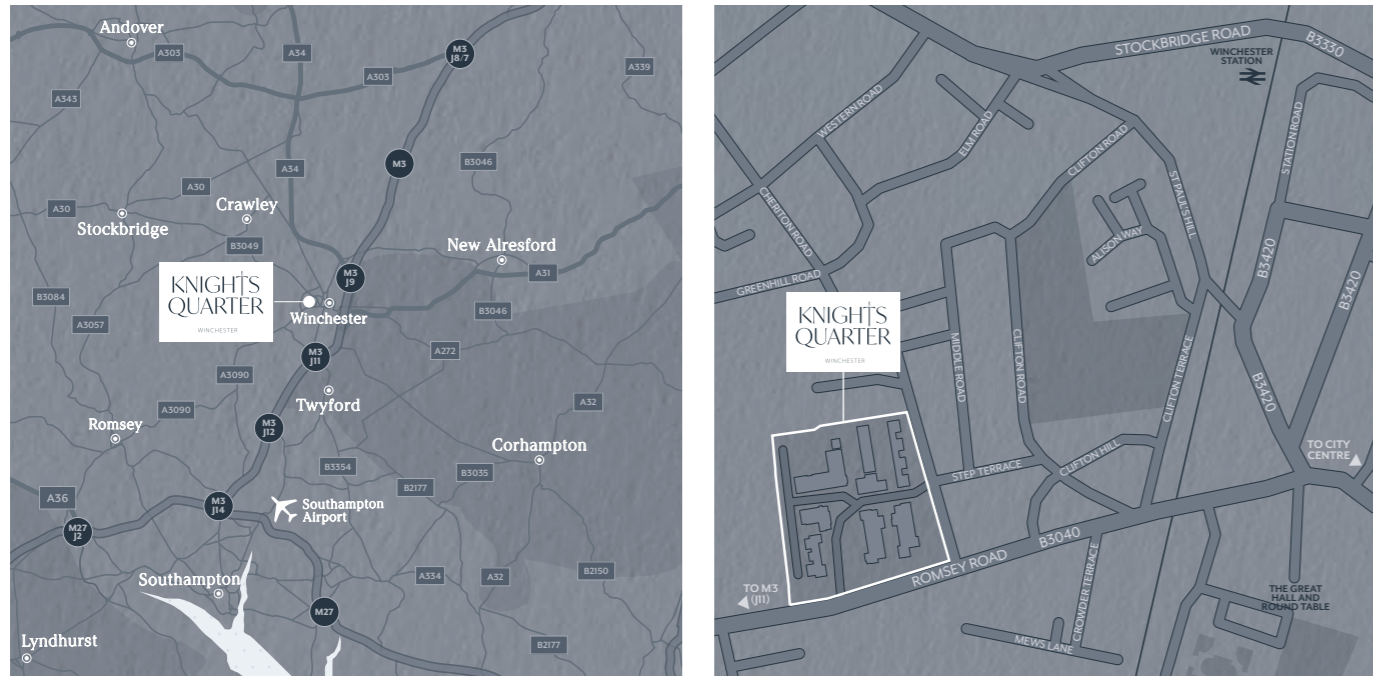
Please scan this QR code for more information on how we are **TRANSFORMING TOMORROW**



Get in touch

Sales Suite Open Daily 10am - 5pm
Knights Quarter, Romsey Road, Winchester SO22 5DE
Telephone: 01962 679000

knightsquarter.co.uk
knightsquarter@berkeleyhomes.co.uk



Maps are not to scale and show approximate locations only. The information in this document is indicative and is intended to act as a guide only as to the finished product. Accordingly, due to Berkeley's policy of continuous improvement, the finished product may vary from the information provided. It may not be possible to provide the exact materials as referred to in the brochure. In such cases a suitable alternative will be provided. Berkeley reserves the right to make these changes as required. These particulars should not be relied upon as statements of fact or representations and applicants must satisfy themselves by inspection or otherwise as to their correctness. This information does not constitute a contract or warranty. The dimensions given on plans are subject to minor variations and are not intended to be used for carpet sizes, appliance sizes or items of furniture. Knights Quarter is a marketing name and will not necessarily form part of the approved postal address. Applicants are advised to contact Berkeley to ascertain the availability of any particular property.



