

HORLICKS QUARTER

SLOUGH SL1



DARJEELING HOUSE
FLOORPLANS

Berkeley
Designed for life



HORLICKS QUARTER

SLOUGH SL1

Welcome to Darjeeling House at Horlicks Quarter, an inspiring development that brings new energy and vitality to the heart of Slough. For over a century the Horlicks Factory, with its famous Clocktower and soaring chimney has been one of the most distinctive landmarks in the townscape.

Today, the factory and grounds have been sensitively regenerated to create a new community where refurbished historic buildings and new homes sit within carefully planned and curated landscaped gardens and tranquil water features.

Darjeeling House at Horlicks Quarter represents the best of modern urban living – combining quality homes, excellent on-site amenities, beautiful gardens and a central location.

ICONIC LIVING BY DESIGN



HORLICKS QUARTER

HORLICKS QUARTER

LANDMARK LIVING

Darjeeling House – named after the former residence of Lord and Lady Horlick which was later converted into accommodation for Horlicks Factory employees. Today's stylish new building will offer 79 apartments,

designed to reflect the industrial heritage of the site. It occupies a prime position overlooking Aquifer Gardens, a beautiful green space of meandering paths, gardens, trees and water features.

HORLICKS QUARTER

HORLICKS QUARTER

HORLICKS QUARTER



Site plan is indicative only and subject to change. In line with our policy of continuous improvement we reserve the right to alter the layout, building style, landscaping and specification at any time without notice. Amenities are proposed and delivery will be phased. Buildings scheduled for release in Phase 2; The Maltings, James Horlicks House, William Horlicks House, Horlicks Terrace and Barley Mews. Timings are approximate, correct at time of print. *Source: google.co.uk/maps

KEY

01 RESIDENTS' FACILITIES

- GYM
- CINEMA ROOM
- RESIDENTS' LOUNGE
- GAMES ROOM
- 12-HOUR CONCIERGE

02 DAY NURSERY

03 ROOFTOP GARDEN

04 CO-WORKING HUB

05 CAFÉ

06 LOCAL STORE

07 COMMERCIAL SPACE

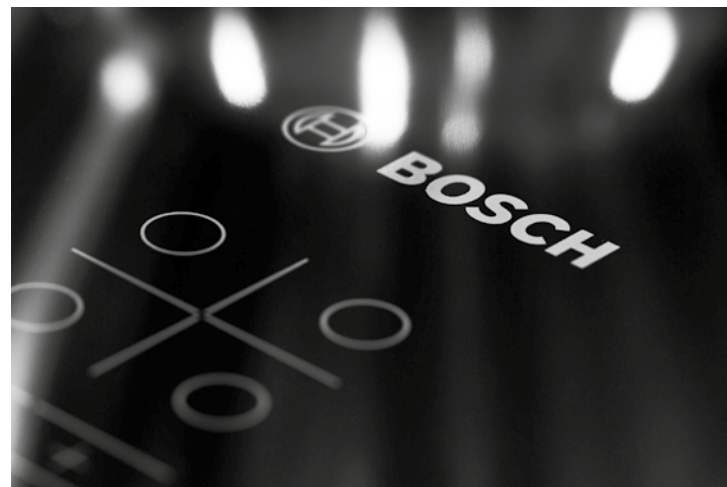
CYCLE PATH

AFFORDABLE HOUSING

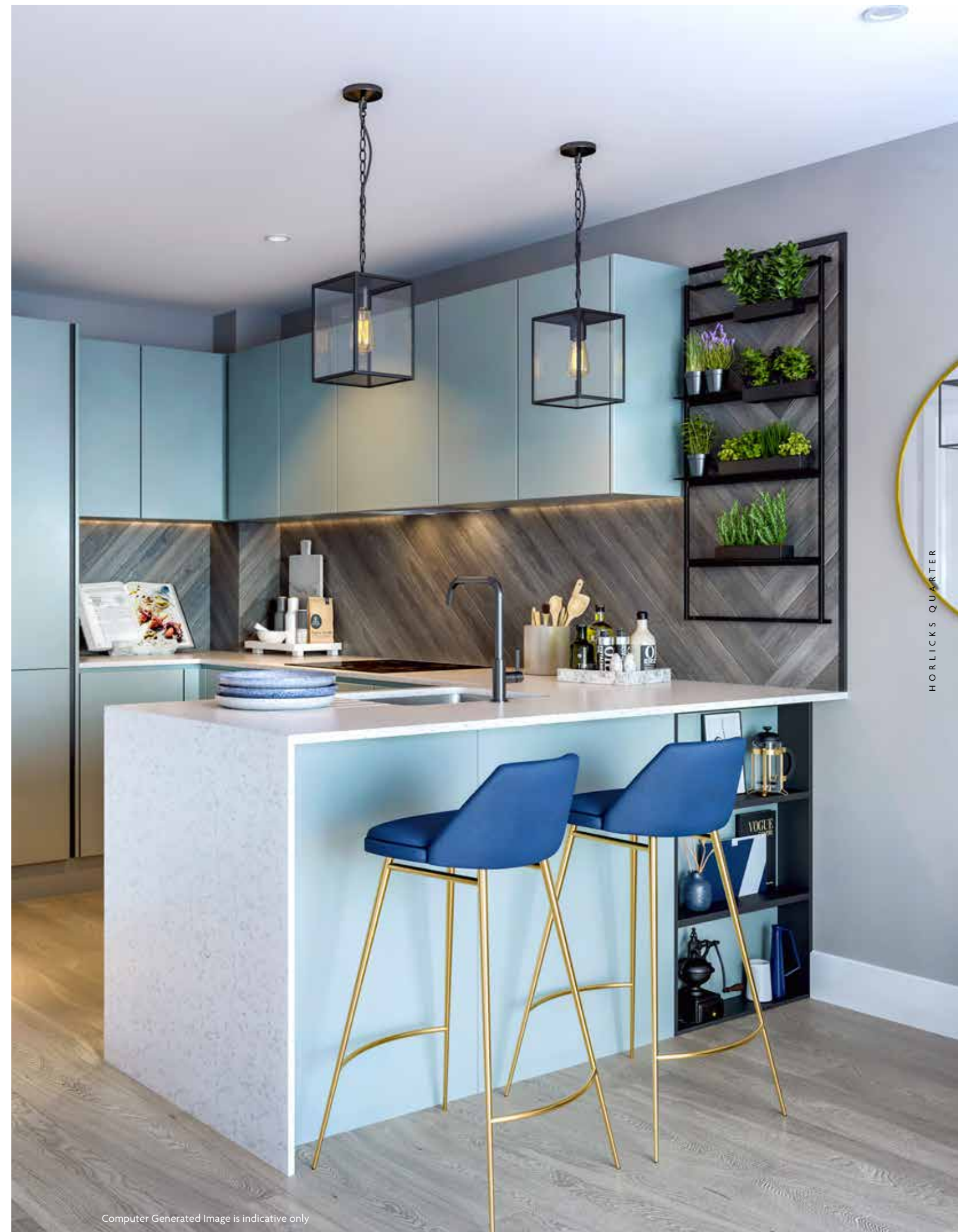
THE HEART OF THE HOME

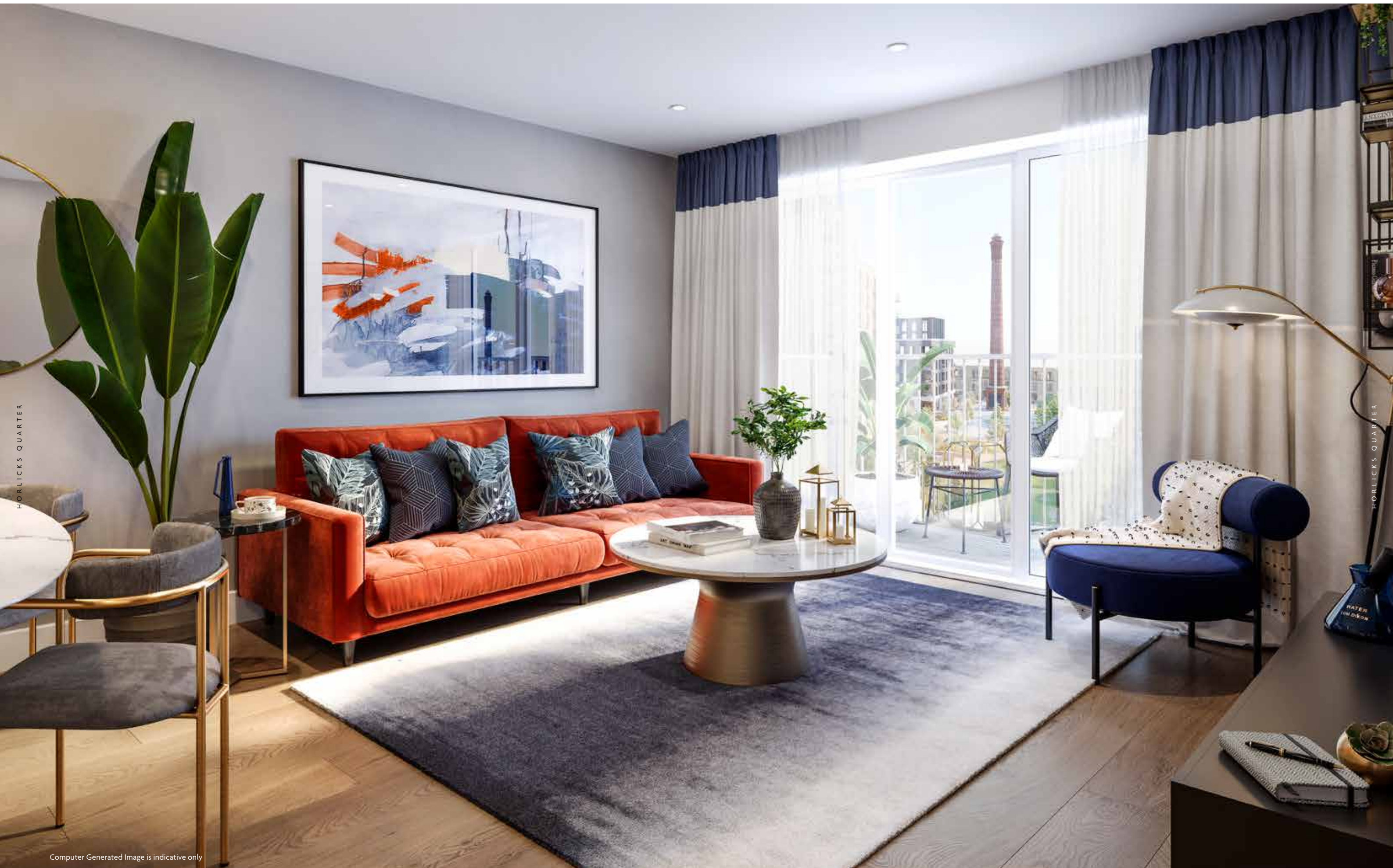
Kitchens are individually designed to ensure they are ergonomically ideal. High specification fittings include Bosch integrated appliances, Karndean flooring and feature pendant lighting above the breakfast bar.*

Selected apartments have a living wall rack for growing herbs and plants. Imaginative design has been used to integrate modern appliances whilst maximising light and space in this most important area of the home.



*Where applicable





Computer Generated Image is indicative only



PEACE AND TRANQUILLITY

Make this your own private haven. Choose from a cool minimalistic palette of natural hues for walls and fittings. Luxuriously soft-to-the-touch fitted carpets are available in a selection of on-trend colours.

Computer Generated Image is indicative only

SPACE TO REST AND RELAX

When it comes to bedrooms and bathrooms, everyone deserves a touch of luxury. At Darjeeling House we have created rooms that are wonderfully restful and calming. Bedrooms are

spacious and light-filled – a relaxing retreat from the hustle and bustle of everyday life – while sleek and contemporary bathrooms and ensembles are a balm for the senses.



Computer Generated Image is indicative only



HORLICKS QUARTER

HORLICKS QUARTER

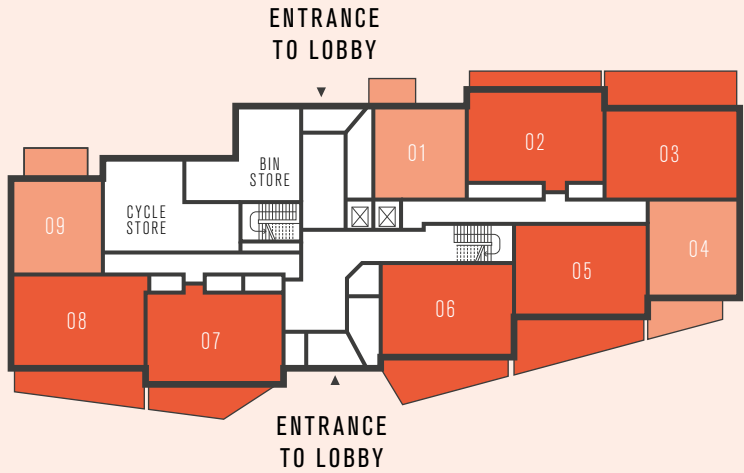
FLOORPLANS

Computer Generated Image, subject to final planning and design

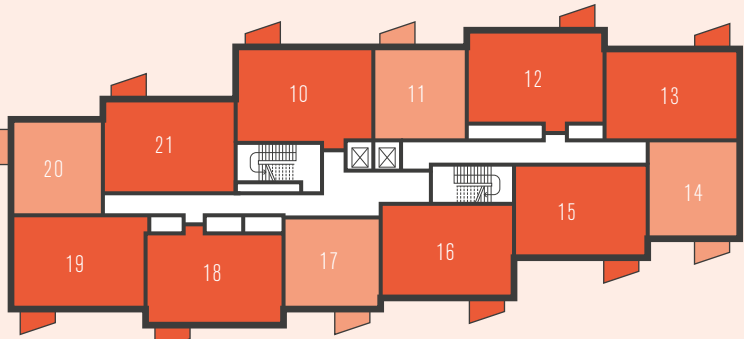
APARTMENT FINDER

APARTMENTS

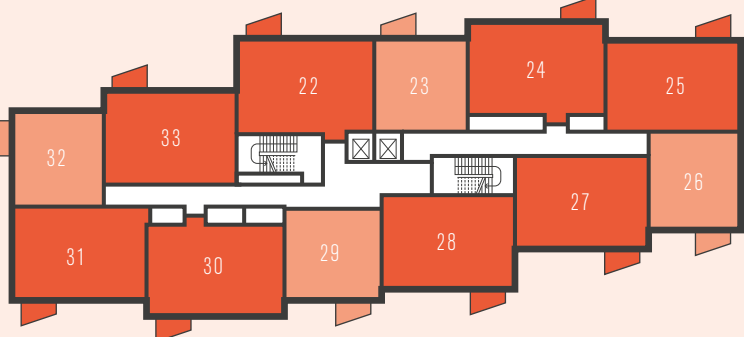
- 1 Bedroom Apartments
- 2 Bedroom Apartments



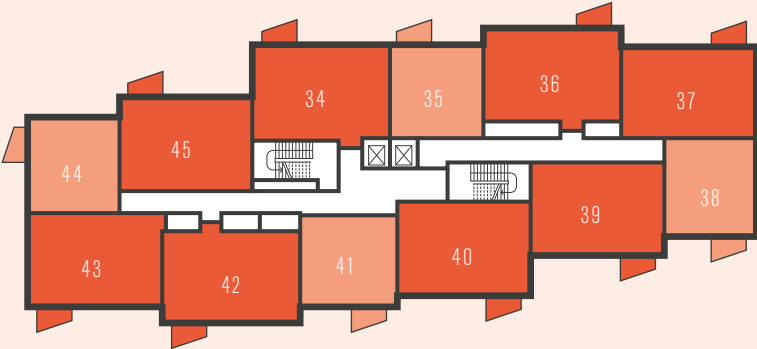
GROUND FLOOR



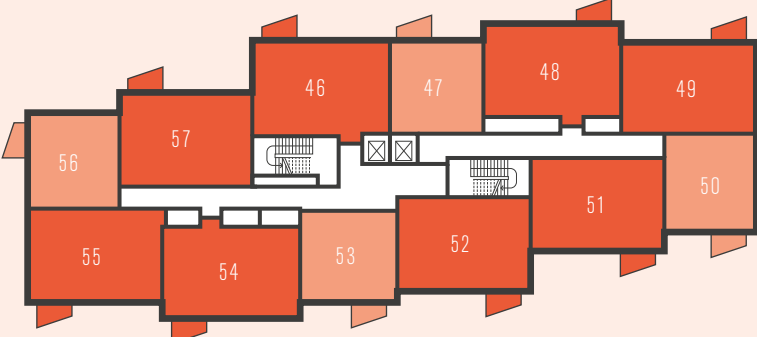
FIRST FLOOR



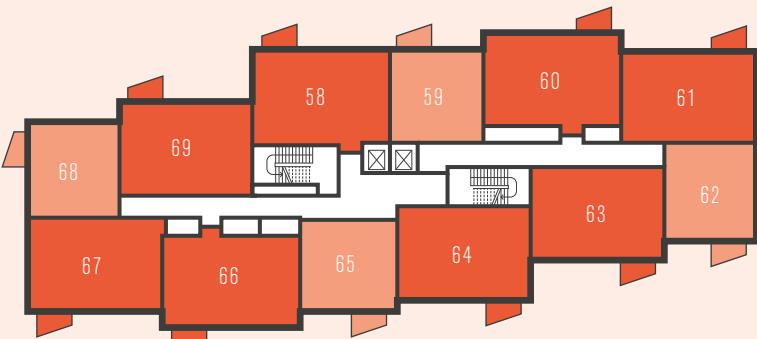
SECOND FLOOR



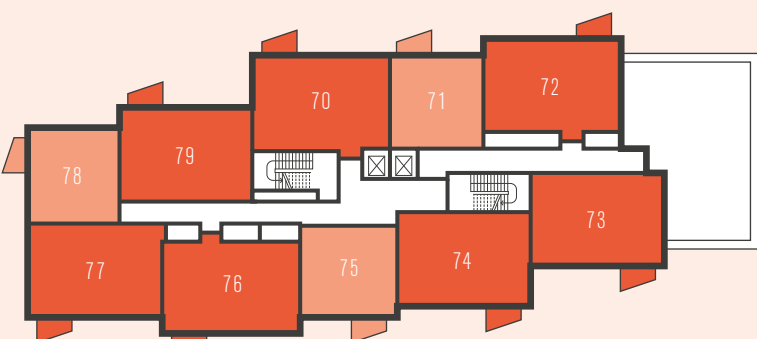
THIRD FLOOR



FOURTH FLOOR



FIFTH FLOOR



SIXTH FLOOR



APARTMENT FINDER



HORLICKS QUARTER

DARJEELING HOUSE

GROUND FLOOR

APARTMENT 01			
Total Area	45 sq m	487 sq ft	
Living/Dining	3.38m x 3.37m	11' 1" x 11' 1"	
Kitchen	3.00m x 2.13m	9' 10" x 7' 0"	
Bedroom	3.30m x 3.08m	10' 10" x 10' 1"	

APARTMENT 02			
Total Area	65 sq m	702 sq ft	
Living/Dining	3.89m x 3.50m	12' 9" x 11' 6"	
Kitchen	3.00m x 1.87m	9' 10" x 6' 2"	
Bedroom 1	4.38m x 2.79m	14' 4" x 9' 2"	
Bedroom 2	3.08m x 2.80m	10' 1" x 9' 2"	

APARTMENT 03			
Total Area	65 sq m	703 sq ft	
Living/Dining	4.38m x 3.44m	14' 4" x 11' 4"	
Kitchen	3.08m x 2.13m	10' 1" x 7' 0"	
Bedroom 1	3.35m x 3.08m	11' 0" x 10' 1"	
Bedroom 2	3.08m x 2.75m	10' 1" x 9' 0"	

APARTMENT 04			
Total Area	46 sq m	496 sq ft	
Living/Dining	4.03m x 3.34m	13' 3" x 10' 11"	
Kitchen	2.45m x 2.40m	8' 1" x 7' 11"	
Bedroom	3.35m x 2.97m	11' 0" x 9' 9"	

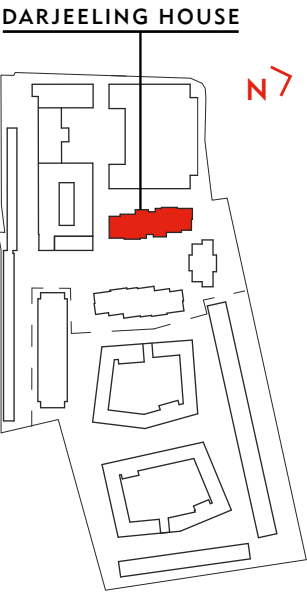
APARTMENT 05			
Total Area	64 sq m	691 sq ft	
Living/Dining	3.89m x 3.37m	12' 9" x 11' 1"	
Kitchen	3.89m x 3.00m	12' 9" x 9' 10"	
Bedroom 1	4.38m x 2.79m	14' 4" x 9' 2"	
Bedroom 2	3.08m x 2.80m	10' 1" x 9' 2"	

APARTMENT 06			
Total Area	64 sq m	694 sq ft	
Living/Dining	4.38m x 3.44m	14' 4" x 11' 4"	
Kitchen	3.18m x 2.44m	10' 5" x 8' 0"	
Bedroom 1	3.35m x 3.08m	11' 0" x 10' 1"	
Bedroom 2	3.08m x 2.75m	10' 1" x 9' 0"	

APARTMENT 07			
Total Area	65 sq m	702 sq ft	
Living/Dining	3.89m x 3.50m	12' 9" x 11' 6"	
Kitchen	3.00m x 1.90m	9' 10" x 6' 3"	
Bedroom 1	4.38m x 2.79m	14' 4" x 9' 2"	
Bedroom 2	3.08m x 2.80m	10' 1" x 9' 2"	

APARTMENT 08			
Total Area	65 sq m	703 sq ft	
Living/Dining	4.38m x 3.44m	14' 4" x 11' 4"	
Kitchen	3.08m x 2.13m	10' 1" x 7' 0"	
Bedroom 1	3.35m x 3.08m	11' 0" x 10' 1"	
Bedroom 2	3.08m x 2.75m	10' 1" x 9' 0"	

APARTMENT 09			
Total Area	46 sq m	497 sq ft	
Living/Dining	4.03m x 3.34m	13' 3" x 10' 11"	
Kitchen	2.45m x 2.40m	8' 1" x 7' 11"	
Bedroom	3.35m x 2.97m	11' 0" x 9' 9"	



FLOORS

Sixth Floor
Fifth Floor
Fourth Floor
Third Floor
Second Floor
First Floor
Ground Floor

APARTMENTS

- 1 Bedroom Apartments
- 2 Bedroom Apartments

KEY

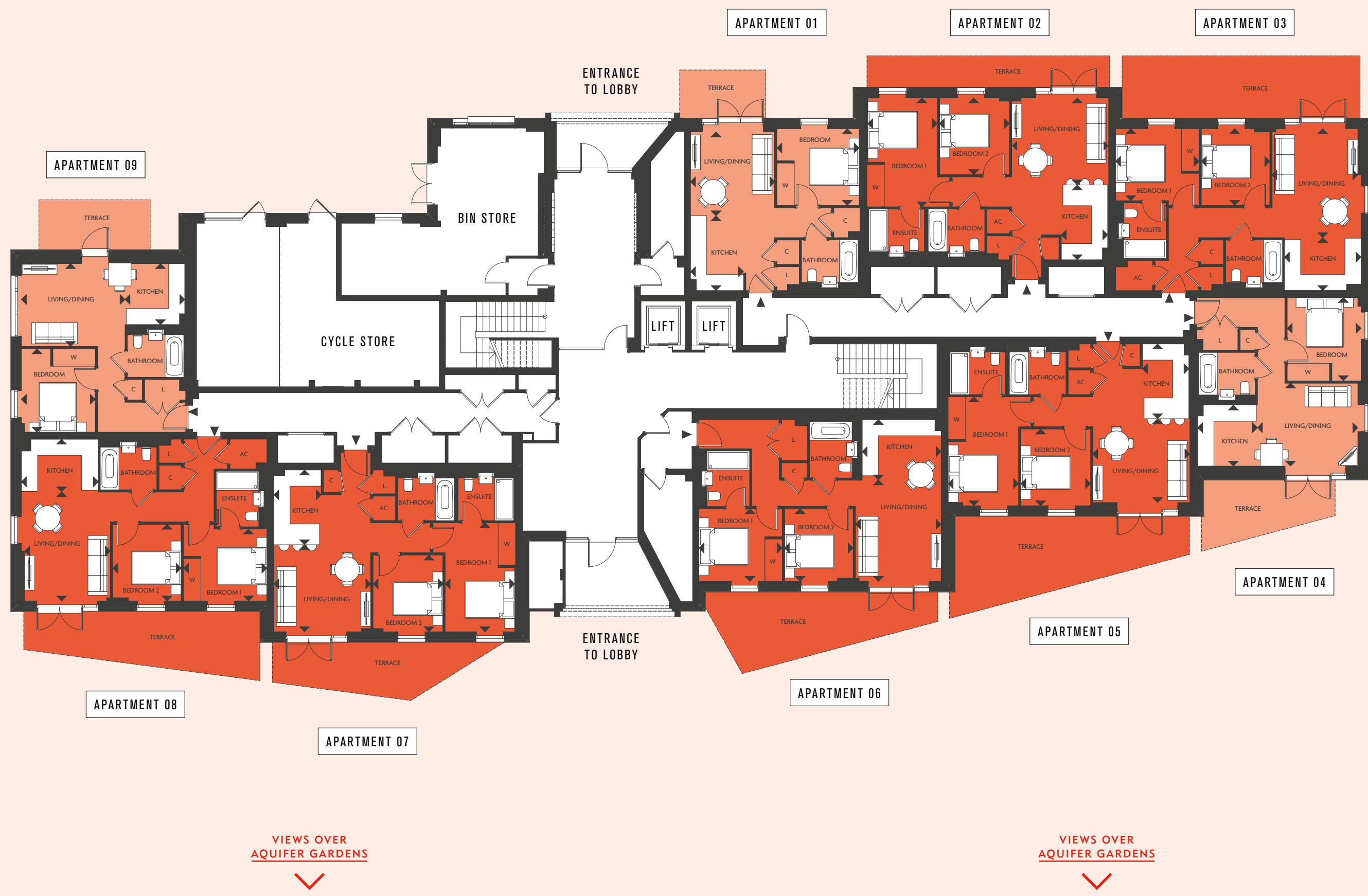
- Measurement Points
- C Cupboard
- AC Airing Cupboard
- L Linen Cupboard
- W Wardrobe
- U Utility Cupboard

DISCLAIMER

Floorplans shown for Horlicks are for approximate measurements only. Exact layouts and sizes may vary. All measurements may vary within a tolerance of 5% and are to the maximum room dimensions. The dimensions are not intended to be used for carpet sizes, appliance sizes or items of furniture. Furniture layouts are indicative only. Kitchen layout indicative only and subject to change. Balcony and terrace dimensions are approximate and may vary within a tolerance of 5% subject to detailed design. Apartment areas are provided as gross internal areas under the RICS measuring practice. Please ask Sales Consultant for further information.

DARJEELING HOUSE

GROUND FLOOR



HORLICKS QUARTER

GROUND FLOOR



HORLICKS QUARTER

DARJEELING HOUSE

FIRST – FIFTH FLOORS

APARTMENTS 10, 22, 34, 46 & 58

Total Area	65 sq m	703 sq ft
Living/Dining	4.38m x 3.44m	14' 4" x 11' 4"
Kitchen	2.95m x 2.13m	10' 1" x 7' 0"
Bedroom 1	3.35m x 3.08m	11' 0" x 10' 1"
Bedroom 2	3.08m x 2.75m	10' 1" x 9' 0"

APARTMENTS 11, 23, 35, 47 & 59

Total Area	45 sq m	487 sq ft
Living/Dining	3.38m x 3.37m	11' 1" x 11' 1"
Kitchen	3.00m x 2.13m	9' 10" x 7' 0"
Bedroom	3.30m x 3.08m	10' 10" x 10' 1"

APARTMENTS 12, 24, 36, 48 & 60

Total Area	65 sq m	702 sq ft
Living/Dining	3.89m x 3.50m	12' 9" x 11' 6"
Kitchen	3.00m x 1.87m	9' 10" x 6' 2"
Bedroom 1	4.38m x 2.79m	14' 4" x 9' 2"
Bedroom 2	3.08m x 2.80m	10' 1" x 9' 2"

APARTMENTS 13, 25, 37, 49 & 61

Total Area	65 sq m	703 sq ft
Living/Dining	4.38m x 3.44m	14' 4" x 11' 4"
Kitchen	3.08m x 2.13m	10' 1" x 7' 0"
Bedroom 1	3.35m x 3.08m	11' 0" x 10' 1"
Bedroom 2	3.08m x 2.75m	10' 1" x 9' 0"

APARTMENTS 14, 26, 38, 50 & 62

Total Area	46 sq m	496 sq ft
Living/Dining	4.03m x 3.34m	13' 3" x 10' 11"
Kitchen	2.45m x 2.40m	8' 1" x 7' 11"
Bedroom	3.35m x 2.97m	11' 0" x 9' 9"

APARTMENTS 15, 27, 39, 51 & 63

Total Area	64 sq m	691 sq ft
Living/Dining	3.89m x 3.37m	12' 9" x 11' 1"
Kitchen	3.89m x 3.00m	12' 9" x 9' 10"
Bedroom 1	4.38m x 2.79m	14' 4" x 9' 2"
Bedroom 2	3.08m x 2.80m	10' 1" x 9' 2"

APARTMENTS 16, 28, 40, 52 & 64

Total Area	64 sq m	694 sq ft
Living/Dining	4.38m x 3.44m	14' 4" x 11' 4"
Kitchen	2.95m x 2.13m	10' 1" x 7' 0"
Bedroom 1	3.35m x 3.08m	11' 0" x 10' 1"
Bedroom 2	3.08m x 2.75m	10' 1" x 9' 0"

APARTMENTS 17, 29, 41, 53 & 65

Total Area	45 sq m	487 sq ft
Living/Dining	3.38m x 3.37m	11' 1" x 11' 1"
Kitchen	3.00m x 2.13m	9' 10" x 7' 0"
Bedroom	3.30m x 3.08m	10' 10" x 10' 1"

APARTMENTS 18, 30, 42, 54 & 66

Total Area	65 sq m	702 sq ft
Living/Dining	3.89m x 3.50m	12' 9" x 11' 6"
Kitchen	3.00m x 1.87m	9' 10" x 6' 2"
Bedroom 1	4.38m x 2.79m	14' 4" x 9' 2"
Bedroom 2	3.08m x 2.80m	10' 1" x 9' 2"

APARTMENTS 19, 31, 43, 55 & 67

Total Area	65 sq m	703 sq ft
Living/Dining	4.38m x 3.44m	14' 4" x 11' 4"
Kitchen	3.08m x 2.13m	10' 1" x 7' 0"
Bedroom 1	3.35m x 3.08m	11' 0" x 10' 1"
Bedroom 2	3.08m x 2.75m	10' 1" x 9' 0"

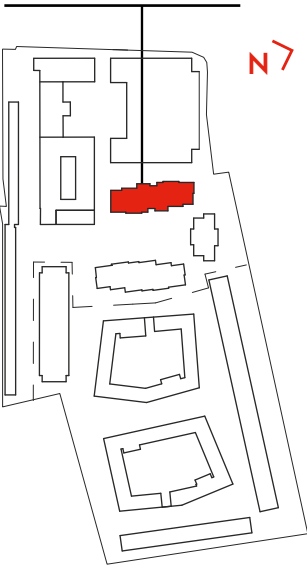
APARTMENTS 20, 32, 44, 56 & 68

Total Area	46 sq m	497 sq ft
Living/Dining	4.16m x 3.34m	13' 8" x 10' 11"
Kitchen	2.45m x 2.40m	8' 1" x 7' 11"
Bedroom	3.35m x 2.97m	11' 0" x 9' 9"

APARTMENTS 21, 33, 45, 57 & 69

Total Area	64 sq m	691 sq ft
Living/Dining	3.89m x 3.37m	12' 9" x 11' 1"
Kitchen	3.89m x 3.00m	12' 9" x 9' 10"
Bedroom 1	4.38m x 2.79m	14' 4" x 9' 2"
Bedroom 2	3.08m x 2.80m	10' 1" x 9' 2"

DARJEELING HOUSE



FLOORS

Sixth Floor	
Fifth Floor	Apartments 58-69
Fourth Floor	Apartments 46-57
Third Floor	Apartments 34-45
Second Floor	Apartments 22-33
First Floor	Apartments 10-21
Ground Floor	

APARTMENTS

- 1 Bedroom Apartments
- 2 Bedroom Apartments

KEY

- Measurement Points
- C Cupboard
- AC Airing Cupboard
- L Linen Cupboard
- W Wardrobe
- U Utility Cupboard

DISCLAIMER

Floorplans shown for Horlicks are for approximate measurements only. Exact layouts and sizes may vary. All measurements may vary within a tolerance of 5% and are to the maximum room dimensions. The dimensions are not intended to be used for carpet sizes, appliance sizes or items of furniture. Furniture layouts are indicative only. Kitchen layout indicative only and subject to change. Balcony and terrace dimensions are approximate and may vary within a tolerance of 5% subject to detailed design. Apartment areas are provided as gross internal areas under the RICS measuring practice. Please ask Sales Consultant for further information.

DARJEELING HOUSE

FIRST - FIFTH FLOORS





FIRST_

FIFTH

FLOORS

HORLICKS QUARTER

DARJEELING HOUSE

SIXTH FLOOR

APARTMENT 70			
Total Area	65 sq m	703 sq ft	
Living/Dining	4.38m x 3.44m	14' 4" x 11' 4"	
Kitchen	2.95m x 2.13m	9' 8" x 7' 0"	
Bedroom 1	3.35m x 3.08m	11' 0" x 10' 1"	
Bedroom 2	3.08m x 2.75m	10' 1" x 9' 0"	

APARTMENT 71			
Total Area	45 sq m	487 sq ft	
Living/Dining	3.38m x 3.37m	11' 1" x 11' 1"	
Kitchen	3.00m x 2.13m	9' 10" x 7' 0"	
Bedroom	3.30m x 3.08m	10' 10" x 10' 1"	

APARTMENT 72			
Total Area	65 sq m	702 sq ft	
Living/Dining	3.89m x 3.50m	12' 9" x 11' 6"	
Kitchen	3.00m x 1.87m	9' 10" x 6' 2"	
Bedroom 1	4.38m x 2.79m	14' 4" x 9' 2"	
Bedroom 2	3.08m x 2.80m	10' 1" x 9' 2"	

APARTMENT 73			
Total Area	64 sq m	691 sq ft	
Living/Dining	3.89m x 3.37m	12' 9" x 11' 1"	
Kitchen	3.89m x 3.00m	12' 9" x 9' 10"	
Bedroom 1	4.38m x 2.79m	14' 4" x 9' 2"	
Bedroom 2	3.08m x 2.80m	10' 1" x 9' 2"	

APARTMENT 74			
Total Area	64 sq m	694 sq ft	
Living/Dining	4.38m x 3.44m	14' 4" x 11' 4"	
Kitchen	3.08m x 2.13m	10' 1" x 7' 0"	
Bedroom 1	3.35m x 3.08m	11' 0" x 10' 1"	
Bedroom 2	3.08m x 2.75m	10' 1" x 9' 0"	

APARTMENT 75			
Total Area	45 sq m	487 sq ft	
Living/Dining	3.38m x 3.37m	11' 1" x 11' 1"	
Kitchen	3.00m x 2.13m	9' 10" x 7' 0"	
Bedroom	3.38m x 3.08m	11' 1" x 10' 1"	

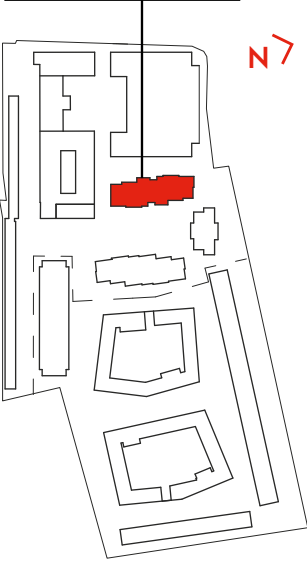
APARTMENT 76			
Total Area	65 sq m	702 sq ft	
Living/Dining	3.89m x 3.50m	12' 9" x 11' 6"	
Kitchen	3.00m x 1.87m	9' 10" x 6' 2"	
Bedroom 1	4.38m x 2.79m	14' 4" x 9' 2"	
Bedroom 2	3.08m x 2.80m	10' 1" x 9' 2"	

APARTMENT 77			
Total Area	65 sq m	703 sq ft	
Living/Dining	4.38m x 3.44m	14' 4" x 11' 4"	
Kitchen	3.08m x 2.13m	10' 1" x 7' 0"	
Bedroom 1	3.35m x 3.08m	11' 0" x 10' 1"	
Bedroom 2	3.08m x 2.75m	10' 1" x 9' 0"	

APARTMENT 78			
Total Area	46 sq m	496 sq ft	
Living/Dining	4.03m x 3.34m	13' 3" x 10' 11"	
Kitchen	2.45m x 2.40m	8' 1" x 7' 11"	
Bedroom	3.35m x 2.97m	11' 0" x 9' 9"	

APARTMENT 79			
Total Area	64 sq m	691 sq ft	
Living/Dining	3.89m x 3.37m	12' 9" x 11' 1"	
Kitchen	3.89m x 3.00m	12' 9" x 9' 10"	
Bedroom 1	4.38m x 2.83m	14' 4" x 9' 3"	
Bedroom 2	3.08m x 2.80m	10' 1" x 9' 2"	

DARJEELING HOUSE



FLOORS

Sixth Floor
Fifth Floor
Fourth Floor
Third Floor
Second Floor
First Floor
Ground Floor

APARTMENTS

- 1 Bedroom Apartments
- 2 Bedroom Apartments

KEY

- Measurement Points
- C Cupboard
- AC Airing Cupboard
- L Linen Cupboard
- W Wardrobe
- U Utility Cupboard

DISCLAIMER

Floorplans shown for Horlicks are for approximate measurements only. Exact layouts and sizes may vary. All measurements may vary within a tolerance of 5% and are to the maximum room dimensions. The dimensions are not intended to be used for carpet sizes, appliance sizes or items of furniture. Furniture layouts are indicative only. Kitchen layout indicative only and subject to change. Balcony and terrace dimensions are approximate and may vary within a tolerance of 5% subject to detailed design. Apartment areas are provided as gross internal areas under the RICS measuring practice. Please ask Sales Consultant for further information.

DARJEELING HOUSE

SIXTH FLOOR



VIEWS OVER
AQUIFER GARDENS



VIEWS OVER
AQUIFER GARDENS



SIXTH FLOOR

HORLICKS QUARTER



Composition of materials and finishes at Horlicks Quarter, indicative only. Options and choices are available (subject to cut off dates) – please see Sales Consultant for details.

BERKELEY QUALITY

Quality is the defining characteristic of Horlicks Quarter, right down to the very last detail. We choose our locations, style of homes, construction practices, materials and specifications with great care.

SPECIFICATION

Every detail of your home has been carefully planned and meticulously finished with Berkeley's characteristic focus on detail and quality.

Kitchens

- Individually designed layouts
- Stone worktops with tiled backsplash
- Bosch integrated appliances throughout including:
 - Stainless steel multi-function single oven
 - 4-zone induction hob
 - Integrated multi-function dishwasher
 - Integrated fridge/freezer
 - Built-in canopy extractor
- Stainless steel single bowl sink with drainer and black mixer tap
- Feature LED lighting to underside of wall units
- Recessed LED downlights to kitchen area
- Chrome socket outlets and USB point above work surface
- Karndean timber effect flooring
- Feature black metal wall rack within selected apartments
- Feature pendant lighting above breakfast bar where applicable

Ensuite

- Modern basin with single drawer vanity below and contemporary Vado single lever basin mixer
- Geberit wall mounted WC, soft-closing seat and cover, concealed cistern and dual flush plate
- Shower enclosure with black framed glass sliding door, Vado chrome thermostatic mixer with wall mounted shower head and hand shower
- Wall mounted mirrored cabinet with shaver socket and concealed lighting
- Tiled niche within shower area and above the WC with feature mirror to the back wall
- Chrome heated towel rail
- Recessed LED downlights
- Porcelain wall tiling to selected areas
- Porcelain floor tiling

Bathroom

- Modern basin with single drawer vanity below and contemporary Vado single lever basin mixer
- Geberit wall mounted WC, soft-closing seat and cover, concealed cistern and dual flush plate
- Bath fitted with a clear glass bath screen with black frame and Vado chrome thermostatic mixer/diverter with wall mounted shower head and hand shower
- Wall mounted mirrored cabinet with shaver socket and concealed lighting
- Tiled niche over bath and above the WC with feature mirror to the back wall
- Chrome heated towel rail
- Recessed LED downlights
- Porcelain wall tiling to selected areas
- Porcelain floor tiling

Electrical fittings and home entertainment

- Television (SkyQ/terrestrial) point to living area
- Television (terrestrial) points to bedrooms
- Telephone point provided to living area
- Data points will be provided adjacent to every television point
- Ceiling mounted downlights to kitchen/living/dining area and hallway
- Pendant lighting to feature within bedrooms

Heating

- Electric panel heating throughout
- Mains fed, electrically operated hot water cylinder

Interior Finishes

- White satin painted internal doors with satin/polished stainless steel door furniture
- White satin painted skirting and architraves to match internal doors
- Bespoke hinged wardrobe doors within bedroom 1 with single hanging
- Karndean timber effect flooring to kitchen/living/dining and hallway (where applicable)
- Carpet laid to bedrooms

Laundry Cupboard

- Space and plumbing provided for free-standing washer/dryer
- Recessed LED downlights
- Karndean timber effect flooring to match kitchen/living/dining

Security & Peace Of Mind

- Audio/video door entry system
- Mains supply smoke detectors and heat detectors with battery back-up
- Multi-point locking to entrance door
- CCTV to entrance and ground floor lobby area
- 10-Year Premier Guarantee issued on build completion

Communal Features

- Bin store
- Cycle store
- Communal television aerial and satellite dish

HORLICKS QUARTER

Your attention is drawn to the fact that in rare circumstances it may not be possible to obtain the exact products or materials referred to in the specification. Berkeley reserves the right to alter, amend or update the specification, which may include changes in the colour, material and/or brand specified. In such cases, a similar alternative will be provided. Berkeley reserves the right to make these changes as required. A number of choices and options are available to personalise your home. Choices and options are subject to timeframes, availability and change.



Sales & Marketing Suite

Stoke Gardens,
Slough SL1 3QB
T: +44(0) 1753 205 555
E: horlickssales@berkeleygroup.co.uk
W: horlicksquarter.co.uk

Directions

By car from Reading M4 (11 mins)

At Junction 6, take the A355 exit to Slough Central/Windsor A332. At the roundabout, take the 1st exit onto Tuns Lane/A355.

By car from London M4 (11 mins)

At Junction 6, take the A355 exit to Slough Central/Windsor A332. At the roundabout, take the 3rd exit onto Tuns Lane/A355.

From Tuns Lane/A355

At traffic light junction turn right onto Bath Road/A4 and continue to follow A4 (passing Salt Hill Park). Continue along A4 until you reach Stoke Road/B416 junction. Turn left at traffic lights onto Stoke Road (Slough Bus Stop and Train Station on your right hand side). Over the railway bridge at next traffic light junction turn left onto Stoke Gardens.

By foot from Slough Station (7 mins)

Exit the station via Platform 5 and turn left onto Railway Terrace. At the end of Railway Terrace turn right onto Stoke Road/B416. At the next junction turn left onto Stoke Gardens.



The information in this document is indicative and is intended to act as a guide only as to the finished product. Accordingly, due to Berkeley policy of continuous improvement, the finished product may vary from the information provided. It may not be possible to provide the exact materials as referred to in the brochure. In such cases a suitable alternative will be provided. Berkeley reserves the right to make these changes as required. These particulars should not be relied upon as statements of fact or representations and applicants must satisfy themselves by inspection or otherwise as to their correctness. This information does not constitute a contract or warranty. The dimensions given on plans are subject to minor variations and are not intended to be used for carpet sizes, appliance sizes or items of furniture. Horlicks Quarter and Darjeeling House are marketing names and will not necessarily form part of the approved postal address. Applicants are advised to contact Berkeley to ascertain the availability of any particular property. The facilities and amenities at Horlicks Quarter are proposed and delivery will be phased. Accordingly, due to Berkeley Homes' policy of continuous improvement, the finished product may vary from the information provided. Computer generated images and lifestyle photography are indicative only and not necessarily of Horlicks Quarter. Planning permission P00094039 (Slough Borough Council). Issue date: April 2022. O433/05CA/0422

