



HIGHCROFT

WALLINGFORD, OXFORDSHIRE



Computer generated image of Highcroft, indicative only



THE HOLLYHOCK

2 bedroom terraced house / semi-detached house

St Edward
Designed for life



THE HOLLYHOCK

2 bedroom terraced house / semi-detached house

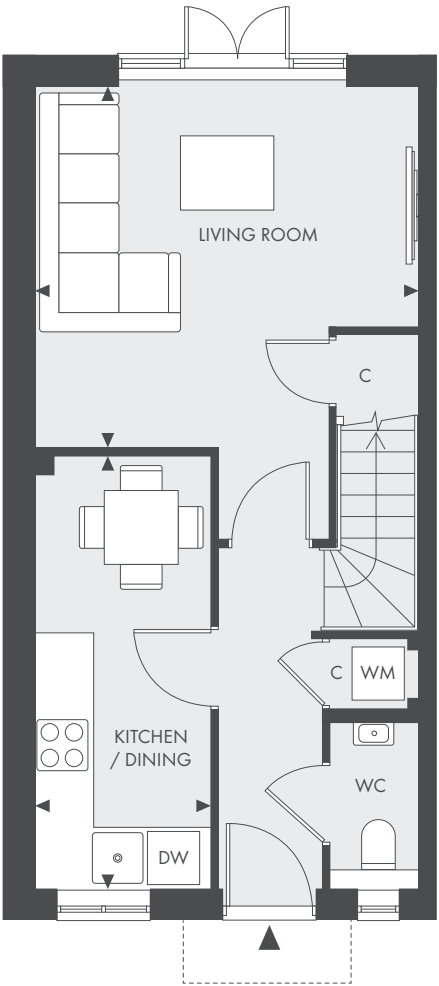
Total Area Terraced – 72 sq m / 775 sq ft

Total Area Semi-Detached – 72.5 sq m / 780 sq ft

PLOTS 80, 81*, 82, 83*, 84*, 85, 86*, 87*, 88, 89*

*PLOTS ARE HANDED
PLOTS 82, 83, 84, 85, 86 & 87 ARE TERRACED HOUSES
PLOTS 83 & 86 ARE MID-TERRACED HOUSES

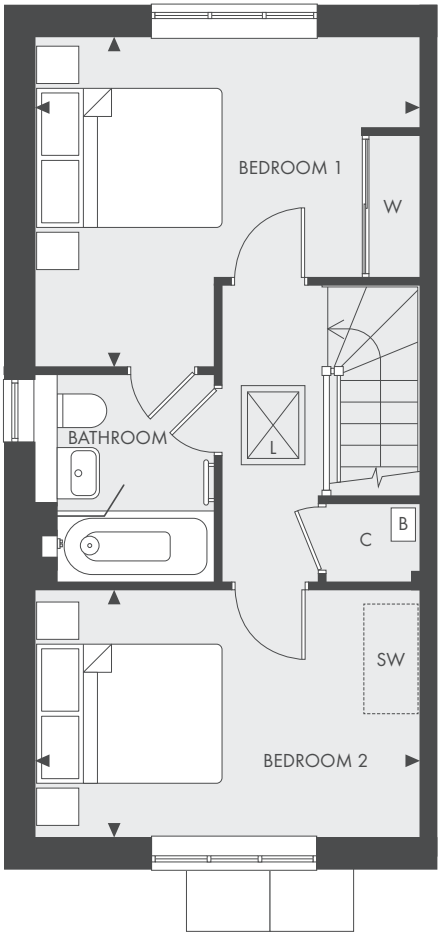
Site plan



2 BEDROOM SEMI-DETACHED HOUSE
Layout applies to plots 80, 81, 88 & 89

Ground Floor

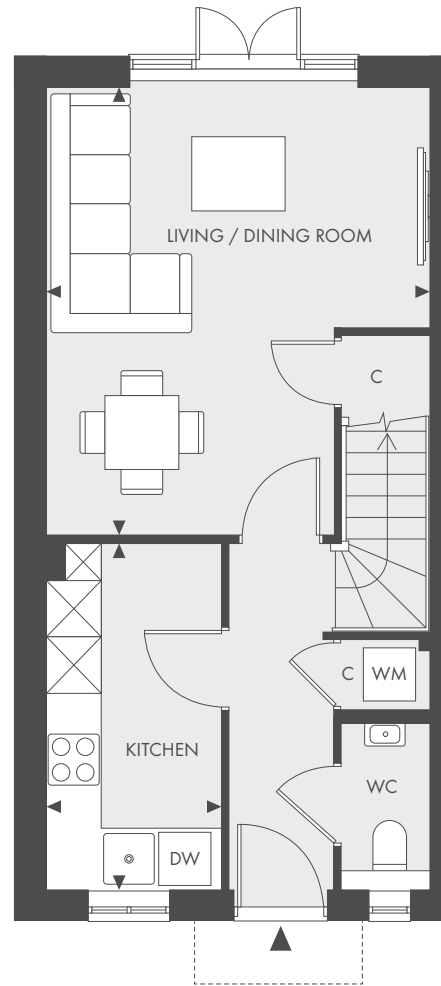
Kitchen / Dining	4.67m x 1.88m	15' 4" x 6' 2"
Living Room	3.89m x 4.16m	12' 9" x 13' 8"



2 BEDROOM SEMI-DETACHED HOUSE
Layout applies to plots 80, 81, 88 & 89

First Floor

Bedroom 1	4.16m x 3.57m	13' 8" x 11' 9"
Bedroom 2	4.16m x 2.67m	13' 8" x 8' 19"



2 BEDROOM TERRACED HOUSE
Layout applies to plots 82, 83, 84, 85, 86 & 87

Ground Floor

Kitchen	1.89m x 3.73m	6' 2" x 12' 3"
Living / Dining Room	4.15m x 4.83m	13' 8" x 15' 10"



2 BEDROOM TERRACED HOUSE
Layout applies to plots 82, 83, 84, 85, 86 & 87

First Floor

Bedroom 1	4.15m x 3.56m	13' 8" x 11' 8"
Bedroom 2	4.16m x 2.67m	13' 8" x 8' 9"

KEY

- ◀ ▶ Depicts measurement points
- W Wardrobe
- C Cupboard
- L Loft Hatch
- WM Washing Machine
- SW Space for Wardrobe
- DW Dishwasher
- B Boiler

SPECIFICATION

✂ Individually designed kitchens

- Contemporary or traditional styled kitchen incorporating a choice of door and laminate worktop finishes with matching upstand
- Bosch integrated single oven
- Bosch ceramic hob
- Integrated extractor
- Integrated fridge/freezer
- Integrated dishwasher
- Integrated washer/dryer (freestanding in utility cupboard where applicable)
- Stainless steel sink with mixer tap
- LED under wall unit lighting
- Brushed chrome power sockets above worktops

✂ Quality bathrooms

- Contemporary styled bathroom
- Washbasin with vanity unit
- Matching mirrored wall unit including shaver socket
- Bathroom with shower over bath and screen
- WC with dual-flush plate, concealed cistern and soft-close seat
- Heated towel rail to bathroom
- Ceramic wall tiles to selected areas
- Tiling to floors in bathroom and cloakroom

✂ Heating, electrical & lighting

- Energy efficient gas fired central heating and hot water system with central programmer
- Radiators with individual thermostatic control to all rooms except where room thermostat fitted
- LED downlights to kitchen/dining room (where applicable), all bathrooms and cloakroom

✂ Home entertainment & communications

- Wiring for Sky Q
- Digital TV aerial point in living room, dining area and bedroom 1
- Telephone points to living room, dining area and bedroom 1
- USB charging points provided to kitchen, living room, dining area and all bedrooms

✂ Interior finishes

- Painted internal doors with chrome finish door furniture
- Painted staircase with stained oak handrail
- Full height wardrobe with sliding doors to bedroom 1
- Satin paint finish to all internal joinery
- Karndean Korlock flooring provided to hall, kitchen, utility cupboard and throughout the ground floor, when layout is open plan
- Fitted carpets to living room, dining area (unless open plan), stairs, landing and all bedrooms

✂ External

- External light to front door and at rear
- Landscaped front garden and turf to rear gardens
- External power point
- External tap and water butt provided
- Pre-wiring for car charging points
- Shed to properties without a garage

✂ Security & peace of mind

- High security front entrance door with multi-point locking system
- Facility for future wireless alarm system
- Mains fed smoke detector with battery backup, fitted to hall and landing
- 10-Year building warranty provided by Premier Guarantee



Photography represents the Primrose Showhome and is indicative only.

T. 01491 817 987

E. highcroftsales@stedward.co.uk

W. highcroft-wallington.co.uk



Highcroft Sales and Marketing Suite,
Calvin Thomas Way, Wallingford OX10 0SL

St Edward
Designed for Life

A joint venture company owned by



Floorplans shown for Highcroft are for approximate measurements only. Exact layouts and sizes may vary. All measurements may vary within a tolerance of 5%. The dimensions are not intended to be used for carpet sizes, appliance sizes or items of furniture. Furniture layouts are indicative only. Floorplans have been sized to fit the page, as a result this plan may not be at the same scale as plans in other inserts. To discuss the location of the boiler please speak to your Customer Relations Manager. Highcroft is a marketing name and will not necessarily form part of the approved postal address. Site plan (including Marketing names) is indicative only and subject to change. Applicants are advised to contact St Edward to ascertain the availability of any particular property. Computer generated images of Highcroft are indicative only. Issue Date: June 2021.