

# SPECIFICATION

## ✘ Individually designed kitchens

- Contemporary or traditional-styled kitchen incorporating a choice of door and laminate worktops with upstand
- Bosch integrated single oven
- Bosch induction hob
- Integrated extractor
- Integrated fridge/freezer
- Integrated dishwasher
- Integrated washer dryer
- Composite sink with mixing tap
- LED under wall unit lighting
- Brushed chrome power sockets above worktops

## ✘ Quality bathrooms

- Contemporary-styled bathroom
- Washbasin with vanity unit to main bathroom and ensuite to bedroom 1
- Matching mirrored wall unit including shaver socket to main bathroom and ensuite to bedroom 1
- Bathroom with shower over bath and screen
- WC with dual-flush plate, concealed cistern and soft-close seat
- Heated towel rail to bathroom
- Ceramic wall tiles to selected areas
- Tiling to floors in bathroom, ensembles and cloakroom

## ✘ Heating, electrical & lighting

- Energy efficient gas-fired central heating and hot water system with central programmer
- Radiators with individual thermostatic control to all rooms except where room thermostat fitted
- Brushed chrome light switches to ground floor
- LED downlights to kitchen, family area, dining area (where applicable), all bathrooms and cloakroom

## ✘ Home entertainment & communications

- Wiring for Sky Q
- Digital TV aerial point in living room, dining area and bedroom 1
- Telephone points to living room, dining area and bedroom 1
- USB charging points provided to kitchen, living room, dining area and all bedrooms

## ✘ Interior finishes

- Painted internal doors with chrome finish door furniture
- Painted staircase with stained oak handrail
- Full height wardrobe with sliding doors to bedroom 1
- Satin paint finish to all internal joinery
- Karndean flooring provided to hall and kitchen
- Fitted carpets to the living/dining room, stairs, landing and all bedrooms

## ✘ External

- External lights to front door and lights at rear
- Landscaped front garden and turf to rear gardens
- External power point
- External tap and water butt provided
- Pre-wiring for car charging points
- Shed to properties without a garage

## ✘ Security & peace of mind

- High security front entrance door with multi-point locking system
- Facility for future wireless alarm system
- Mains fed smoke detector with battery backup, fitted to hall and landing
- 10-year building warranty provided by NHBC



Photography represents The Violet show home and is indicative only.

T. 01491 817 987

E. [highcroftsales@stedward.co.uk](mailto:highcroftsales@stedward.co.uk)

W. [highcroft-wallington.co.uk](http://highcroft-wallington.co.uk)



Highcroft Sales and Marketing Suite,

Calvin Thomas Way, Wallingford OX10 0FN

**Berkeley**  
Designed for life

This development is a joint venture  
between M&G and Berkeley  
**M&G** **Berkeley**  
INVESTMENTS GROUP



**HIGHCROFT**  
WALLINGFORD, OXFORDSHIRE



HERONSBROOK PLACE

**THE VIOLET**  
3 bedroom terraced house

\*Kitchen layout is indicative only and may vary. Floorplans shown for Highcroft are for approximate measurements only. Exact layouts and sizes may vary. All measurements may vary within a tolerance of 5%. The dimensions are not intended to be used for carpet sizes, appliance sizes or items of furniture. Furniture layouts are indicative only. Floorplans have been sized to fit the page, as a result this plan may not be at the same scale as other plans. Highcroft is a marketing name and will not necessarily form part of the approved postal address. Site plan (including Marketing names) is indicative only and subject to change. Applicants are advised to contact St Edward to ascertain the availability of any particular property. Computer generated images of Highcroft are indicative only. Issue Date: November 2023.

**Berkeley**  
Designed for life

HERONSBROOK PLACE

THE VIOLET

3 bedroom terraced house

Total area: 76.6 sq m / 825 sq ft

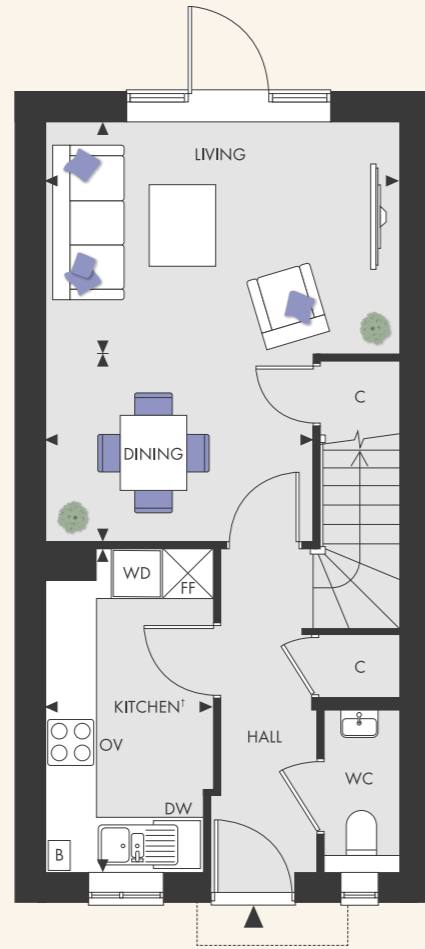
PLOTS 237\*, 238\*, 239, 274, 275\*, 276\*, 299, 300\*, 301\*, 307, 308\*, 309\*

\*PLOTS ARE HANDED

Site plan



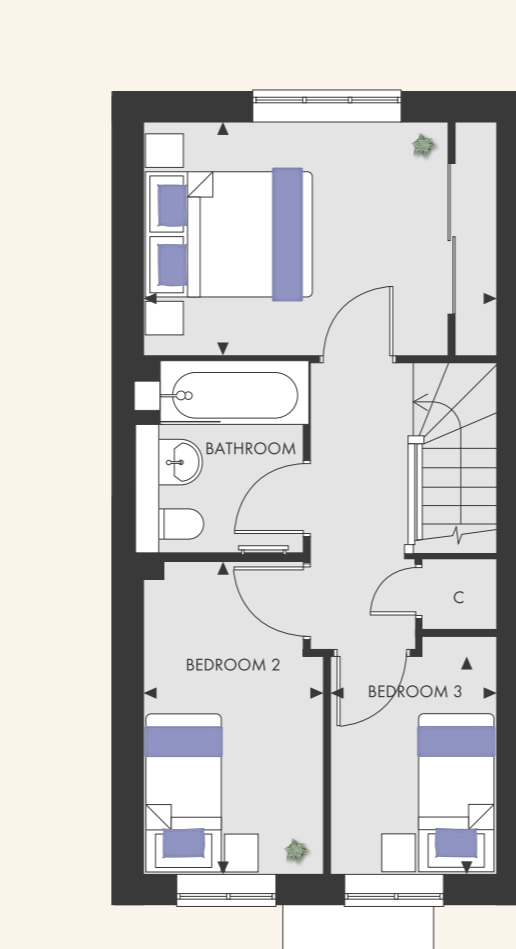
Site plan not to scale



3 BEDROOM MID TERRACE HOUSE  
Layout applies to plots 238\*, 275\*, 300\*, 308\*

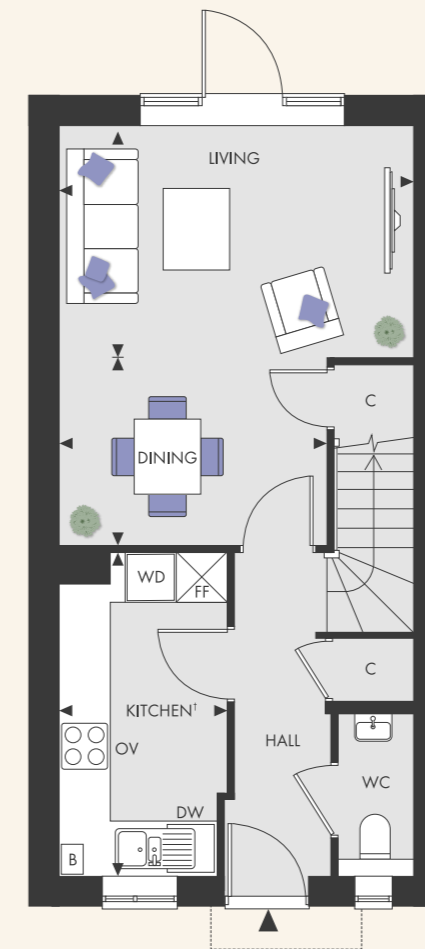
Ground Floor

Kitchen	3.88m x 2.00m	12' 9" x 6' 7"
Living	4.32m x 2.78m	14' 2" x 9' 1"
Dining	3.19m x 2.25m	10' 6" x 7' 5"



First Floor

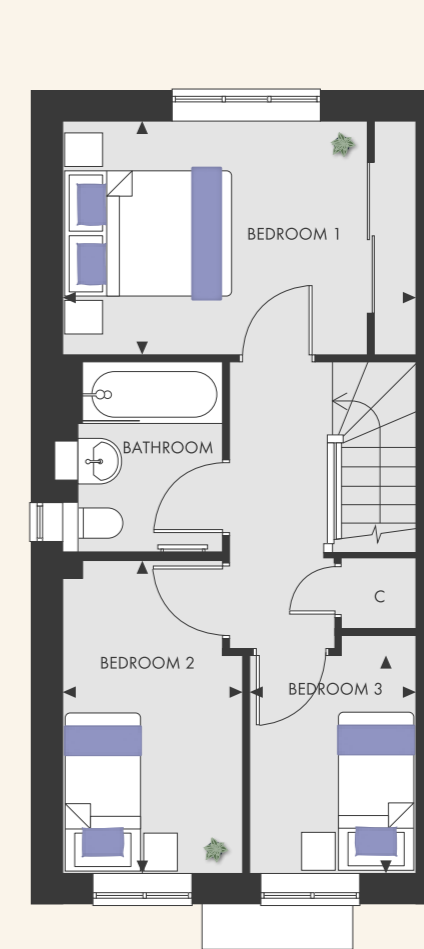
Bedroom 1	4.32m x 2.78m	14' 2" x 9' 1"
Bedroom 2	3.76m x 2.15m	12' 4" x 7' 1"
Bedroom 3	2.61m x 2.07m	8' 7" x 6' 9"



3 BEDROOM END TERRACE HOUSE  
LAYOUT APPLIES TO PLOTS 237\*, 239, 274, 276\*, 299, 301\*, 307, 309\*

Ground Floor

Kitchen	3.88m x 1.96m	12' 9" x 6' 5"
Living	4.25m x 2.78m	10' 6" x 9' 1"
Dining	3.12m x 2.25m	10' 3" x 7' 5"



First Floor

Bedroom 1	4.25m x 2.78m	13' 11" x 9' 1"
Bedroom 2	3.76m x 2.15m	12' 4" x 7' 1"
Bedroom 3	2.61m x 2.00m	8' 7" x 6' 7"

KEY

- ◄ ► Depicts measurement points
- W Wardrobe
- C Cupboard
- L Loft Hatch
- SW Space for Wardrobe
- WD Washer Dryer
- DW Dishwasher
- FF Fridge/Freezer
- OV Oven
- B Boiler

