



The Villager

DISCOVER A VILLAGE FOR LIFE

HARTLAND VILLAGE NEWS • ISSUE 8 • AUGUST 2022

Focus on Surjit:
**YOUR NEW COMMUNITY
ENGAGEMENT OFFICER**

Home Sweet Home:
**OUR NEW RESIDENT
HONEYBEES**

Upcoming
EVENTS

Al fresco
DINING

Silva Homes move
INTO HARTLAND VILLAGE



St Edward
Designed for life

WHAT'S HAPPENING *at Hartland Village*

The community at Hartland Village is thriving; our growing group of residents and the St Edward team have enjoyed some fantastic community events and celebrated some major milestones as development continues at pace.

Take a look at what we've been up to so far in 2022...

Pilates classes on the green

Our residents have been enjoying some taster Pilates classes on the green, arranged by St Edward and led by qualified instructor and Hartland Village homeowner Jessica Hole. The first six weeks were free of charge to participants, to get as many people involved as possible! If the sessions are popular, they'll continue to run on Sunday mornings between 10am and 11am at Jessica's usual rate and are open to people from the wider community... contact jessicahole27@hotmail.com to find out more.

We hope to see as many of you as possible with your mats on the green!

FOCUS ON: COMMUNITY



Surjit Sonik is the new Community Engagement Officer for Hartland Village. It's her job to plan events and activities that will help residents come together. We take five minutes to find out about Surjit's plans for building a community at Hartland Village.

Can you tell us about your role at Hartland Village?

My role includes organising community events, supporting local initiatives, working with local partners, promoting the positive attributes of Hartland Village and updating local neighbours on construction progress. If you belong to a residents' group, community group or charity in the area, I'd love to hear from you! Please contact me to explore ways we can get involved to support local causes.

What community events do you have planned for the year?

I have several events planned for the year for Hartland Village. St Edward is hosting Pilates lessons on the green, with the first twelve sessions paid for by us, and it's been great to see people attending those. We're also planning a BBQ, children's activities, open air cinema nights, pumpkin carving for autumn, and Santa's visit in December! We really want to shape our plans around our residents and their wishes.

How can people get in touch with you?

Feel free to contact me anytime on either surjit.sonik@berkeleygroup.co.uk or 07811 036 657.

Tell us about yourself!

I live just 15 minutes from Hartland Village, in Bagshot, and have been here for nine years. I live with my partner Des and have five grown up children and two beautiful grandchildren. I started my career in community engagement by accident! I used to work in the aviation industry, so I have always had a passion for working with people. I started some volunteering work for my local authority in 2007 when I lived in Hounslow. Through my volunteering role I found my passion in helping communities and that's where I started my career in community engagement and development.



Home Sweet Home

HARTLAND VILLAGE WELCOMES HONEYBEES!

Hartland Village has welcomed nine newly installed hives of honeybees in partnership with Fleet & District Beekeepers' Association.

As part of our commitment to supporting the natural environment and boosting biodiversity, we have provided dedicated space for the association to keep the hives – situated on the outskirts of the 70-acre Country Park that forms part of Hartland Village – for the association to deliver practical training to its new beekeepers each year and to develop and improve the skills of existing beekeepers.

David Morgan, Fleet & District Beekeepers' Association's Apiary Manager said: "Honeybees, along with many other insect species, play a vital role in the pollination of all flowering plants and trees and help keep our ecosystems healthy. Our new home at Hartland Village will help us teach more local people about the importance of bees in nature."

In addition, St Edward teamed up with Court Moor Secondary School to design a new curriculum project that teaches students the crucial role that bees play and how to protect them. Pupils also designed new signage for the apiary; the winning design is now displayed at the entrance.

Danny Rowland, Sales Director at St Edward, added: "Hartland Village is a proud part of the Fleet community and one of our most important local commitments is to the natural environment; our partnership with the Beekeepers' Association is a practical way to help protect the local bee population. Our residents are also looking forward to learning more about what they can do to help in their own gardens, and to sampling some Hartland honey!"



Weekend walkies at the Country Park

Did you know that Hartland Village has its very own dog walking group? The Hartland Village Hounds members meet on the first or second Sunday of each month for a Country Park walk with their four-legged friends. The group is an excellent way for residents to meet like-minded pet owners, and a good opportunity to explore the gorgeous woodland in the surrounding area.



Pimms by the Pond

Residents at Hartland Village soaked up the summer sun with Pimms by the pond this July, hosted by their Community Engagement Officer, Surjit Sonik. Children enjoyed outdoor games and giant bubbles.

One resident, who is due to move into Hartland Village in December, said: "I can't believe the effort put into arranging resident events! I am so excited and really looking forward to moving in. We as a family have moved a number of times and it's the first time that I feel we are a part of the community."

TOP FIVE LOCAL RESTAURANTS FOR AL-FRESCO DINING



1. Sorrento

Sorrento is a family-run, authentic Italian restaurant and wine bar in Fleet town centre. Sip a beautifully chilled rosé and dine on fresh pizza, sensational seafood and traditional pasta under their fairy-lit veranda. There are also patio heaters for those chillier evenings.

Visit 33 Reading Road South, Fleet GU52 7QP or call 01252 811200 to book a table. Sorrento is just a seven minute drive from Hartland Village.



2. Heron on the Lake

Heron on the Lake is a nautical inspired pub made up of cosy log fires and dining areas, leading up to the waterside deck with a scenic panorama of the pond. British heritage food and seasonality are championed by the Heron team, along with a great selection of world wines and beers – you can't beat a Sunday roast with a view!

Visit 14 Old Cove Road, Fleet GU51 2RY or call 01252 812522 to book a table. Heron on the Lake is a seven minute drive from Hartland Village.



3. The Swan

The garden at The Swan in Farnborough creates the perfect sun trap to enjoy a refreshing drink or delicious meal from the all-day menu. Perched at the end of the private Farnborough Airport runway, the garden boasts stunning overhead views of the planes as they descend into the Airport.

Visit 91 Farnborough Road, Farnborough GU14 6TL or call 01252 510920 to book a table. The Swan is a 10 minute drive from Hartland Village.



4. The Snow Goose

The Snow Goose in Farnborough serves great British pub plates and Sunday roasts. Each meal is homemade using local ingredients. There are two outdoor areas for al-fresco dining and a fantastic playground to keep the little ones entertained. There are even resident animals in the garden!

Visit 135 Fernhill Road, Farnborough GU14 9DX or call 01252 545694 to book a table. The Snow Goose is a seven minute drive from Hartland Village.



5. The Oat Sheaf

The Oat Sheaf is a premium pub, bar, and restaurant with its very own courtyard and large rear garden. On the menu, you'll find a wide range of dishes that accommodate all appetites and tastes. From tempting starters and sharing platters through to satisfying mains and light bites, the great selection of classic pub food dishes will always hit the spot!

Visit 2 Crookham Road, Fleet, Hampshire, GU51 5DR or call 01252 819508 to book a table. The Oat Sheaf is a nine minute drive from Hartland Village.

SILVA HOMES TAKES OVER THE MANAGEMENT OF NEW AFFORDABLE HOMES *at Hartland Village*



Silva Homes, Hart District Council and St Edward celebrated the handover of 36 new affordable homes in Hartland Village with a commemorative ribbon-cutting ceremony. Delivered by St Edward in partnership with Hart District Council, the affordable homes will be managed by Silva Homes and available to people around the local area.

The collection of homes comprises 1, 2 and 3-bedroom apartments and houses and are split between affordable rent and shared ownership.

Cllr Stuart Bailey, Portfolio Holder for Community, said: "The development provides much needed affordable homes for local people who have been waiting on

our housing register for some time. We have been working closely with Silva Homes to let these homes to those who need them most."

Paul Vallone, Chairman of St Edward said: "High quality, affordable homes are a fundamental part of our vision for a vibrant and mixed community at Hartland Village. We are very pleased to help more local people access affordable rent and, via shared ownership, onto the property ladder."

Alan Ward, Chief Executive of Silva Homes said: "Silva Homes is delighted to have worked in partnership with St Edward and Hart District Council to deliver new affordable homes at Hartland Village, and it is vital that we keep working together to help tackle the housing crisis."



FARNBOROUGH AIRSHOW FLY-BY

Hartland Village were in for a treat when the Red Arrows and Black Eagles did a flypast this July.

150 residents attended a BBQ to celebrate the rich aeronautical history of Hartland Village and Farnborough Airshow, which is where the first powered flight took place in 1908.



Stable & Ground COFFEE AT HARTLAND COUNTRY PARK

A licence has been granted to Stable & Ground for their fantastic coffee truck to park in the Country Park, near the car park entrance. For an initial six-month trial period, Stable & Ground will serve excellent refreshments from their vintage horsebox trailer. Enjoy your usual weekend walk with a delicious vanilla latte to sip on your way around the park!

If the six-month trial is successful, we hope that Stable & Ground will serve the park's visitors on a more permanent basis!

Check out the Stable & Ground Facebook page for their weekly timetable!

UPCOMING EVENTS

The Hartland Village Dog Show 20th August



Open Air Cinema 2nd September



Diwali Celebration 20th October

Halloween & Pumpkin Carving Competition 31st October



Local Fireworks November



Christmas Celebration December



FLEET CARNIVAL *Art Competition*

We welcomed Elvetham Heath Primary School and Art with Angie to Hartland Village to announce the winners of Fleet & District Carnival's art competition. The carnival committee launched the artwork competition earlier this year using the carnival's theme 'circus'. As gold sponsors of the carnival, we handed out five prizes at Hartland Village's Sales & Marketing Suite. The lucky winners were Charlie, Thalia, Isla and Joshua. The overall prize was awarded to Henry and a special schools' prize awarded to Elvetham Heath Primary School.

Leanne Walmsley, Chairman of Fleet Carnival, said: "The presentation

evening was a fantastic way to celebrate the success of the art competition winners, and the return of carnival after a two year break. It's great to keep local schools involved and it was brilliant fun looking at the creative entries from such bright, young students."

Danny Rowland, Sales Director at St Edward, added: "St Edward is very proud to be a part of the local community and to be sponsoring the carnival for a third time. We've seen some excellent artwork and it has been a pleasure to welcome more new faces to the development."



DISCOVER OUR *biodiverse show garden*

The beautiful new Showhome at Hartland Mews features a biodiverse garden, designed to demonstrate the variety of simple ways in which our residents can create sustainable habitats for wildlife. Our Showhome garden includes a pond, deadwood

features, a wildflower bed, drought beds and a native hedgerow, as well as accessories including a bird feeder, compost bin, bird and bat box and even a bee box, creating a haven for many types of wildlife.



HARTLAND MEWS *at Hartland Village*



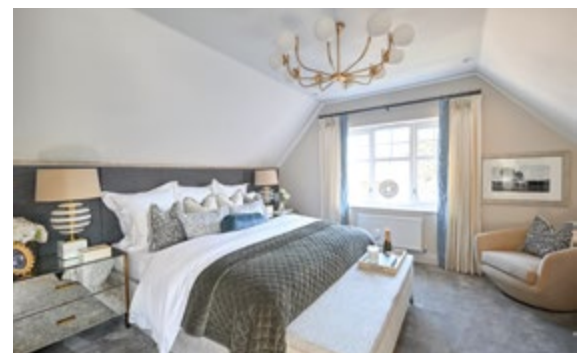
Hartland Mews Showhome

NOW LAUNCHED & OPEN DAILY

Welcome to Hartland Mews, the latest collection of homes at Hartland Village, Fleet.

The homes at Hartland Mews offer private gardens and are situated on leafy streets close to the forthcoming Village Green and Linear Park. They are also conveniently located for the future primary school and Village Centre, so you can enjoy a wide array of amenities and community facilities just a few moments from your front door.

3 & 4 BEDROOM HOUSES FROM £610,000



Photography is indicative only

BOOK TO VIEW OUR NEW SHOWHOME TODAY

01252 758 844 | HARTLANDVILLAGE@STEDWARD.CO.UK | WWW.HARTLANDVILLAGE.CO.UK
Ively Road, Fleet, Hampshire GU51 3GL

OUR VISION
2030
TRANSFORMING TOMORROW

Berkeley
Group
Proud member of the
Berkeley Group

**Investor in
Customers**
Gold 2022

St Edward
Designed for life

A joint venture company owned by
M&G INVESTMENTS **Berkeley** Group