



The Villager

DISCOVER A VILLAGE FOR LIFE

HARTLAND VILLAGE NEWS • ISSUE 10 • OCTOBER 2023

MILESTONE MOMENT
in construction

Hartland Village
SNAPS ON SOCIAL

The best places
**TO ENJOY A LOCAL
SUNDAY LUNCH**

Meet the new
**COUNTRY PARK
RANGER**

Our Neighbours
**HARTLAND VILLAGE'S
COMMUNITY SPIRIT
TICKS ALL THE BOXES
FOR FAMILY LIVING**

Discover
**TOP 5 AUTUMNAL
WALKS FOR NATURE
ENTHUSIASTS**

St Edward
Designed for life



Hartland Country Park

GRANTED PRESTIGIOUS GREEN FLAG

Hartland Country Park has been awarded the Green Flag Award, an international mark of quality which recognises excellent management and maintenance of green spaces in the UK and rest of the world.

The 70 acre park, between Farnborough and Fleet, boasts a BMX track, circular walk and trim trails, a children's play area, butterfly bank, benches and picnic tables. In other corners there are fascinating clues to the park's previous life as a military training ground.



MEET THE NEW COUNTRY PARK RANGER, FUNDED BY ST EDWARD

Beth Robinson, 23, had always wanted a job working with nature. Thanks to Hartland Village, she's got one.

Beth is part of Hart District Council's Countryside Team – her role is part funded by the development of Hartland Village.

"I have always wanted to work outdoors," explains Beth. "I studied Wildlife Conservation and Animal Biology at university and also have a qualification in Countryside Management. But ranger jobs are difficult to come by. So, when I saw the advert, I had to go for it."

"As well as maintaining the park, we've created banks with wildflowers that butterflies and bees love. The area is very popular with families, there's a cycle trail and dog walkers love it, too."

Beth organises volunteer days every month, when local people come and help with tasks around the site, such as grass cutting, scrub clearing and removal of invasive species.

For Beth, it's the thriving nature that makes Hartland Country Park a special place. "I've seen so many different types of birds, plus slow worms, grass snakes and common lizards, too."

At Hartland Country Park, it seems Beth has found her natural place.



Meet SURJIT SONIK, YOUR COMMUNITY ENGAGEMENT OFFICER



The last year has been very busy for Surjit, who has been arranging and delivering some exciting social, health and wellbeing events, building strong working relations with local charities and community groups and exploring ways to support local causes.

Surjit's aspiration is to create a family-friendly, healthy and happy community at Hartland Village, where neighbours are supportive of one another, have a sense of belonging and a feeling of home within the village and local neighbourhood.

A residents' social committee has been formed with eight committee members and Surjit can often be seen around the village meeting with residents and planning the next event.

RUNNING CLUB

We have a regular running club at Hartland Village which takes place every Sunday morning and we have been so lucky to get Charlie and Jordan, marathon runners and qualified personal trainers, on board as our run leads.

If you'd like to join, please contact:
surjit.sonik@berkeleygroup.co.uk



MUSICIANS WANTED

Can you play an instrument?
We're looking to start a band at Hartland Village

Contact us at: 07811 036657
surjit.sonik@berkeleygroup.co.uk
Or leave a message on our Facebook group

THE BEST PLACES TO ENJOY A SUNDAY ROAST

Let's face it, no matter what time of year it is, a Sunday roast is always a good way to round off the weekend. Residents at Hartland Village are not only immersed in the beautiful Hampshire countryside, perfect for walks in the sunshine, but they are also surrounded by fabulous country pubs offering delicious Sunday roasts.

Check out some of our favourites...



1. The Foresters

The Foresters pub shines as a top destination for a Sunday lunch. Boasting a cosy ambience amidst picturesque woodland views, it's a haven for roast enthusiasts. With a delectable choice of chicken, beef, pork, and nut roast, accompanied by an assortment of veggies, it caters to diverse tastes. Attentive staff and a warm atmosphere seal the deal, making The Foresters an ultimate spot to relish a delightful Sunday carvery.

foresters-dining.co.uk

The Foresters is approximately a 3-minute drive from Hartland Village.



2. The Oat Sheaf

The Oat Sheaf has got to have one of the most scrumptious Sunday menus in the area. For those who can't decide, there is a trio of roasts option, and we'd also recommend their mouthwatering desserts to end your meal; we just love their apple and damson crumble! Enjoy a relaxed afternoon in this charming and quaint pub, just down the road from Hartland Village.

theoatsheaf.co.uk

The Oat Sheaf is approximately a 5-minute drive from Hartland Village.



3. The Heron on the Lake

This cosy pub, complete with a waterside terrace deck, has the friendly environment needed for a wholesome Sunday afternoon. Sit back and enjoy a glass of wine, whilst you tuck into some tasty dishes - their roast dinners are not to be missed! Choose from lamb, chicken, beef or pork, and there is also a delicious vegan alternative of sweet potato and chestnut roast.

destinationnns.co.uk/pubs/theherononthelake

The Heron on the Lake is approximately a 7-minute drive from Hartland Village.

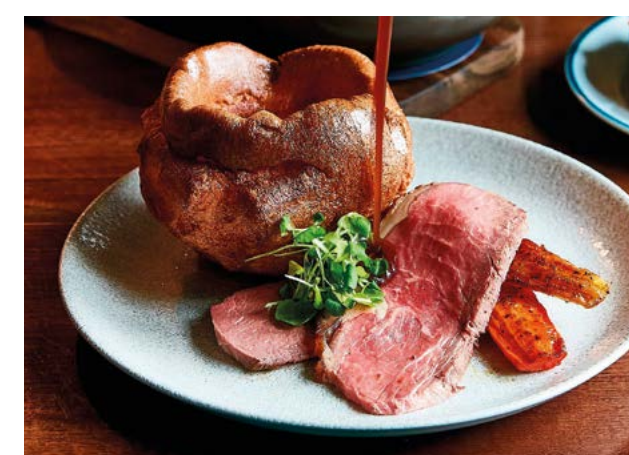


4. The Fox and Hounds

With a blend of rustic charm and warm ambience, The Fox and Hounds offers a sumptuous menu of contemporary twists on traditional British Sunday lunch favourites, from perfectly cooked roast meats to fresh seasonal vegetables and homemade gravy. The inviting interior, attentive staff, and tranquil outdoor garden leading to the Basingstoke canal, provides a relaxed setting for families and friends.

foxandhoundsgcc.co.uk

The Fox and Hounds is approximately an 8-minute drive from Hartland Village.



5. The Exchequer, Crookham Village

Tucked away in Crookham Village, The Exchequer blends modern comfort with traditional pub charm. This award-winning country pub is renowned for its mouthwatering roasts, including chicken, beef, pork, lamb, and a delicious mushroom lentil wellington. Dishes are served with beef dripping Yorkshire pudding, summer greens, braised red cabbage, roast roots, beef fat potatoes, and an abundance of the special house gravy!

exchequercrookham.co.uk

The Exchequer is approximately a 10-minute drive from Hartland Village.

Our neighbours

HARTLAND VILLAGE'S COMMUNITY SPIRIT TICKS ALL THE BOXES FOR FAMILY LIVING

When the search started for their next home, second-time buyers Shikha, 37, and Naveen Sharma, 42, knew exactly what they were looking for – a family house in a secure and happy neighbourhood in which to raise their five-year-old daughter, Aaryaa. The warm, community-led ethos at Hartland Village, St Edward's landmark development near popular Fleet in Hampshire, immediately attracted their attention and they reserved a semi-detached, four-bedroom house for the family after their first visit.



Shikha explains: "We'd been looking for a new home for almost two years. Naveen noticed Hartland Village when he was driving around the area for work and when we visited, we fell in love instantly – it has such an inviting feel and the homes are luxurious, but also homely and welcoming. Although we looked at other developments in the area, none of these matched the lovely sense of belonging at Hartland Village."

Shikha and Naveen knew that choosing a place to live is defined by so much more than bricks and mortar. According to research by YouGov, undertaken on behalf of St Edward, almost three quarters of people surveyed (72%) felt that living in a place with a sense of community was important in making a good neighbourhood. Only a fifth of people surveyed (18%) would feel safe and comfortable at home because of being in a gated neighbourhood, and 42% through the presence of an alarm system. However, nearly two thirds of people (64%) said they would feel safe and comfortable being part of a friendly community and 71%, almost three quarters, just by knowing their neighbours.

St Edward has appointed a dedicated Community Engagement Officer at Hartland Village and its bespoke Community Plan is designed not only to encourage connections between the new residents, but for St Edward to take an active role in creating, expanding and maintaining links between the people who live here.

Since the family moved into their new home, they have quickly settled in. Shikha says: "I was one of the founding members of the Residents' Committee at Hartland Village. I make suggestions to St Edward with the aim of improving the wellbeing of residents and look after the Residential Management Group. I love being involved with the local community and the residents are all so considerate of each other, which makes it a safe space for raising families."

Set over three floors, the family's four-bedroom home provides ample space. There is a large open-plan kitchen/dining/family space, living room, four bedrooms, three bathrooms, and a cloakroom downstairs.

Shikha comments: "Our house has a very high specification, and the layout has been well thought out. We really like the arrangement of casual family space on the ground floor and more formal living space on the level above, which suits our lifestyle. Four bedrooms give us plenty of options and we have converted the fourth bedroom into a study, which is ideal as both of our jobs are based partly from home."

When Naveen is based in the office, he has a short drive to work in Camberley, around seven miles away, where he works as IT Director for a well-known bakery brand. Shikha found a new role as Head of Product with an e-commerce business, and also volunteers as a local town councillor and school governor.



MILESTONE MOMENT

in construction

The Hartland Village team have now completed Phase 1 of the masterplan consisting of 181 homes and a magnificent Linear Park.



On Phase 2 we have welcomed our first residents and continue to make good progress with all the plots now in build.

We have also opened two new show homes; The Willow and The Lavender.

This vast project will complete in 2035 so only another 12 years to go!



HARTLAND VILLAGE PICKS UP NHBC 'PRIDE IN THE JOB QUALITY' AWARD



We are delighted to have won a NHBC Pride in the job quality award. The NHBC awards celebrate the very highest standards in housebuilding. We were put forward for the awards by NHBC inspectors who chose the highest scoring quality projects from the region.



Hartland Village SNAPS ON SOCIAL

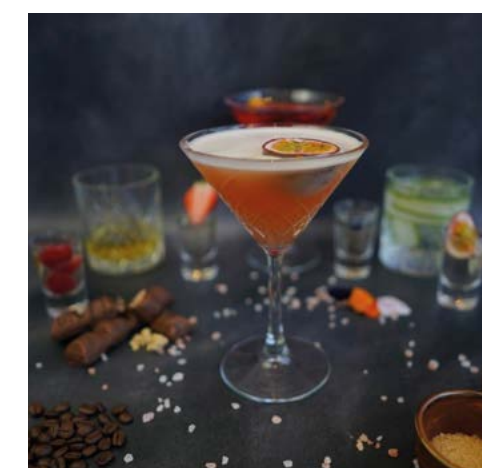
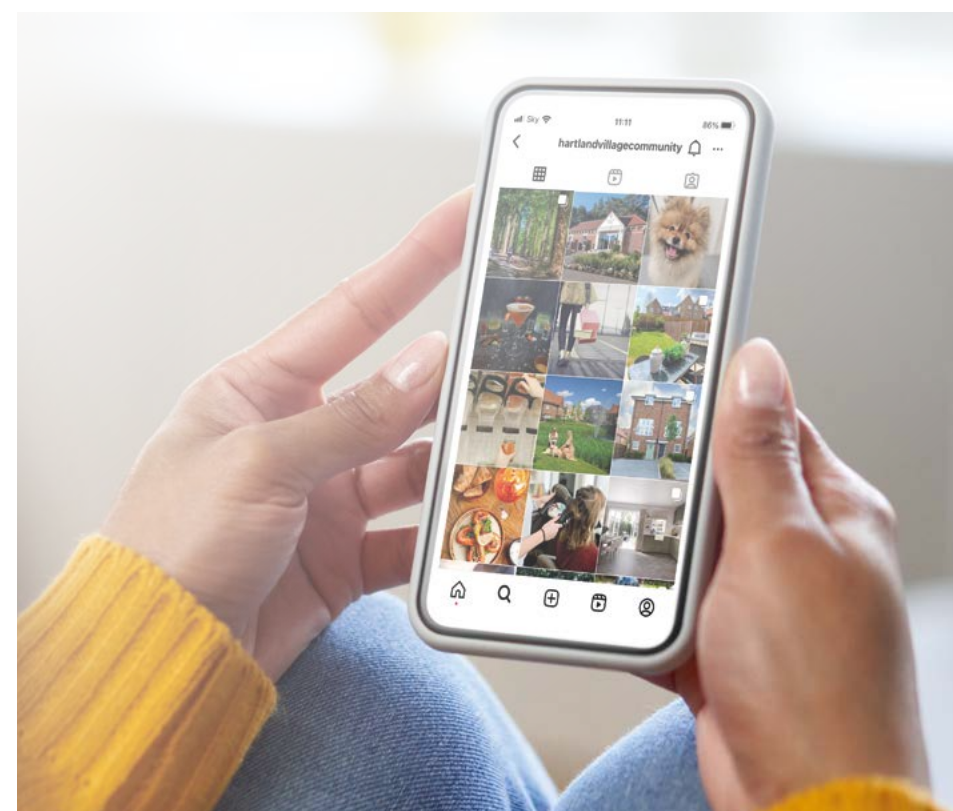
Did you know that Hartland Village has its very own Instagram page?



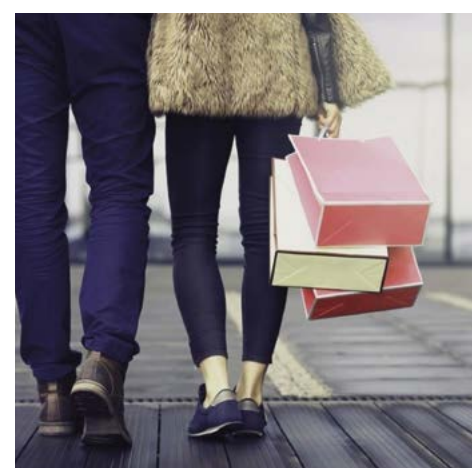
Follow us for the latest village news where we share everything from snaps from the latest community events to interior inspiration for your new home.

Have some ideas on what you think we should post? Let us know in the comments or message us with your suggestions, and we'd love to share your own content from Hartland Village!

Take a look at what's been posted recently...



Have you visited [@twospoonsfleet](#) yet? Enjoy a delicious round of 2 for 1 cocktails to kick-start your weekend! We recommend their passionfruit martini... so refreshing and fruity!



Shop till' you drop. With an array of shops on offer, [Hart Shopping Centre](#) is in the heart of Fleet From fashion to home decor, you'll find it all in one place! Just six minutes away from Hartland Village.



[Hartland's Hopper Bus Service](#). We offer a shuttle bus service for residents travelling to Farnborough Main Station. The shuttle bus is bookable for trips running in the morning and during the evening.



Have you visited [@fleetscoop](#) yet? This zero-waste shop has everything from teas and coffees to toiletries and dry foods... you can even purchase home goods! Just bring a jar, fill it up and get it weighed.



Events COMING UP

If you would like to attend any of the events free of charge, please email [Surjit](mailto:surjit.sonik@berkeleygroup.co.uk) (tickets will be issued on a first come basis).



4TH NOVEMBER
FIREWORKS



14TH OCTOBER
COFFEE MORNING/
WORLD MENTAL HEALTH DAY



10TH NOVEMBER
DIWALI



31ST OCTOBER
HALLOWEEN



9TH DECEMBER
CHRISTMAS CELEBRATIONS

Discover THE TOP 5 AUTUMNAL WALKS FOR NATURE ENTHUSIASTS

Step into the new season with our selection of the finest places for a local walk this autumn...



1 HARTLAND COUNTRY PARK ON YOUR DOORSTEP!

Why not start at the magnificent 70-acre Country Park adjacent to the homes at Hartland Village? The extensive woodland offers a range of trails as well as a play area and children's cycle and scooter track, and picnic tables to enjoy a rest and refreshments.



4 FLEET POND NATURE RESERVE EIGHT MINUTES' DRIVE FROM HARTLAND VILLAGE

Embrace the changing colours of autumn at Fleet Pond. The serene waters reflect the surrounding trees in their full autumnal glory - keep an eye out for migratory birds making a pit stop by the water's edge!

2 OAKLEY PARK FOUR MINUTES' DRIVE FROM HARTLAND VILLAGE

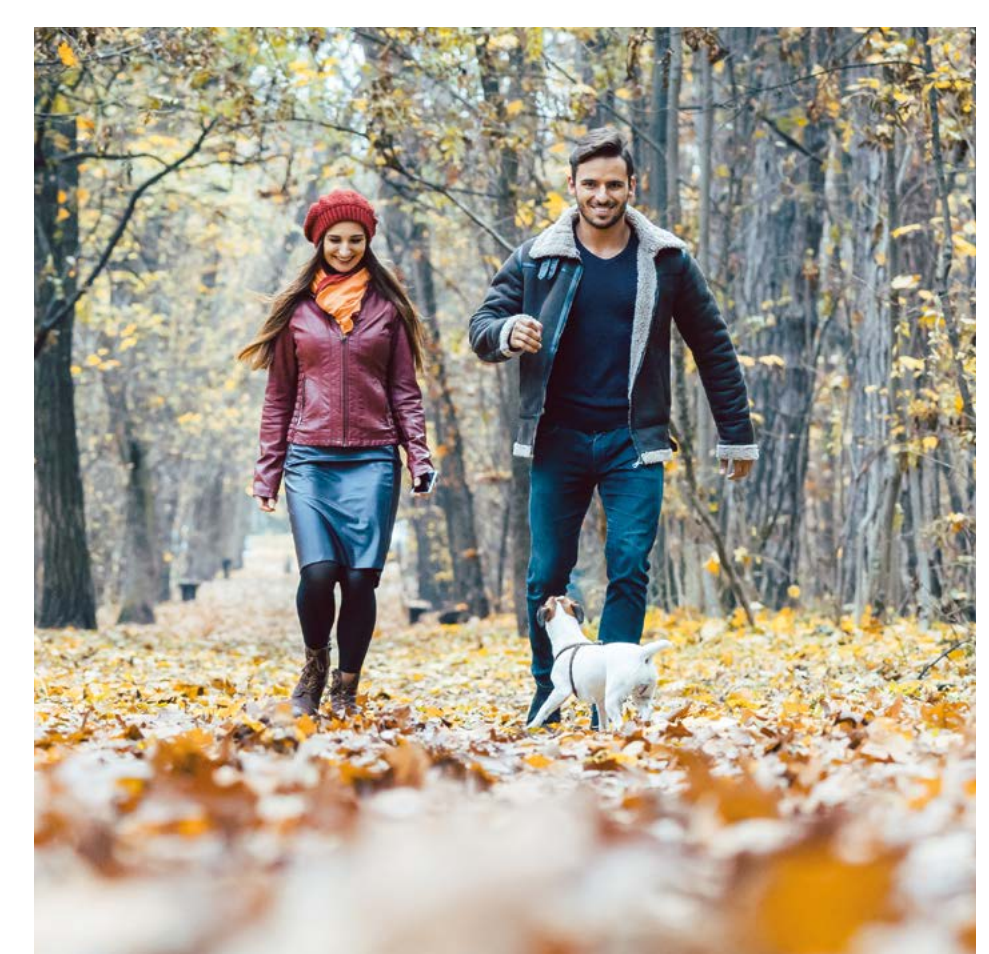
Enjoy the beauty of Oakley Park's woodlands and gardens; the towering trees create a colourful canopy, setting the scene for a peaceful walk.

5 ELVETHAM HEATH NATURE RESERVE 13 MINUTES' DRIVE FROM HARTLAND VILLAGE

Traverse woodlands and heathlands come alive with autumn hues at Elvetham Heath. The crunch of leaves underfoot and the brisk air provide a refreshing experience. This is a great spot for capturing autumn snapshots.

3 BRAMSHOT FARM COUNTRY PARK SIX MINUTES' DRIVE FROM HARTLAND VILLAGE

Discover the rustic charm of Bramshot Farm. The open fields adorned with autumnal colours offer a serene atmosphere. Follow the trails as they wind through wooded areas and open spaces.





HARTLAND MEWS *at Hartland Village*

Two beautiful new showhomes
NOW OPEN

Discover The Willow and The Lavender showhomes at Hartland Mews

Conveniently located for the future primary school and Village Centre amenities, the 3 bedroom Willow and 4 bedroom Lavender are the perfect choice for your new home. Explore their contemporary elegance, luxurious finish and private gardens at the showhome launch for a taste of life at Hartland Village.

3 & 4 BEDROOM HOUSES FROM £570,000



Photography is indicative only

BOOK TO VIEW OUR NEW SHOWHOME TODAY

01252 758 844 | HARTLANDVILLAGE@STEDWARD.CO.UK | WWW.HARTLANDVILLAGE.CO.UK
Ively Road, Fleet, Hampshire GU51 3GL

OUR VISION
2030
TRANSFORMING TOMORROW

 **Berkeley**
Group
Proud member of the
Berkeley Group

 **Investor in
Customers**
Gold 2022

St Edward
Designed for life

A joint venture company owned by
 **M&G**
INVESTMENTS  **Berkeley**
Group