



## THE BLOOM COLLECTION

STYLISH TWO, THREE, FOUR & FIVE BEDROOM HOMES

---



*A greener place to call home*

**Berkeley**  
Designed for life



CONTENTS

---

A TRANQUIL PLACE

*New homes designed for life*

---

FLOORPLANS

*Two, three, four & five bedroom homes*

---

SPECIFICATION

*Discover the Berkeley quality*

---

HARESHILL



HARESHILL

CROOKHAM VILLAGE  
HAMPSHIRE

***Surrounded by rural countryside Hareshill is an attractive new collection of one to five bedroom homes in the picturesque village of Crookham near Fleet in Hampshire.***

*Edged with native trees and encompassing an ancient copse, the homes are located amongst green pathways, nature and play areas. A new community centre and landscaped central green are perfect for new and old friends to enjoy.*

*Within walking distance of village pubs, good schools and the Hart Leisure Centre with its multi-sport facilities, Hareshill offers a tranquil and outdoor lifestyle. For the daily commute Winchfield and Fleet stations are equidistant and both offer regular trains into Waterloo.*

*With beautiful views across the Hampshire countryside, an abundance of nature all around and part of an established English village these stylish homes really are the perfect place to find your new home.*

*A greener place to call home*

# A TRANQUIL PLACE

IN A QUIET HAMPSHIRE  
VILLAGE

---

*A beautiful selection of one to five bedroom homes  
built to Berkeley's exacting quality.*

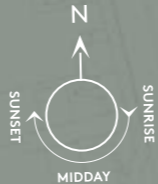
# DISCOVER HARESHILL

## THE BLOOM COLLECTION

*Time and attention has been given to create a spacious and open environment with sustainable living in mind.*



The development layout is indicative only and subject to change. In line with our policy of continuous improvement we reserve the right to alter the layout, building style, landscaping and specification at anytime without notice.



- KEY:
- Two bedroom homes
  - Three bedroom homes
  - Four bedroom homes
  - Five bedroom homes
  - Visitor parking

## TWO BEDROOM HOMES

A GREENER PLACE TO CALL HOME

*Light and airy, the two bedroom homes at Harehill offer a variety of different styles.*



Photography and lifestyle imagery, indicative only.



Photography of the Showhome at Harehill is indicative only.



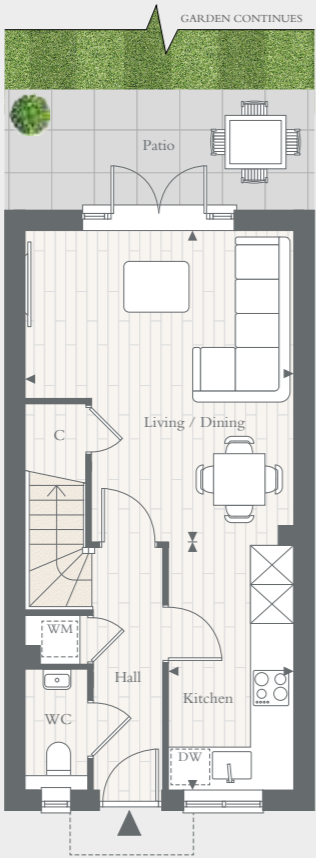
Computer generated image, indicative only.

THE BRACKEN

TWO BEDROOMS – PLOTS 235★, 236, 317 & 318★

Total area: 72.0 sq m 775 sq ft

GROUND FLOOR



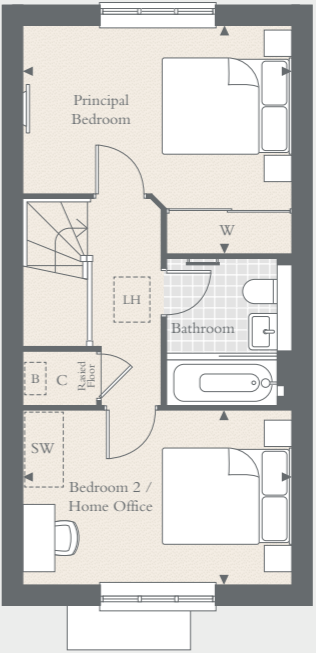
Side elevation for plot 317

KITCHEN	3.83M X 1.95M	12' 7" X 6' 5"
LIVING / DINING	4.86M X 4.15M	15' 11" X 13' 8"

\*Plot is handed

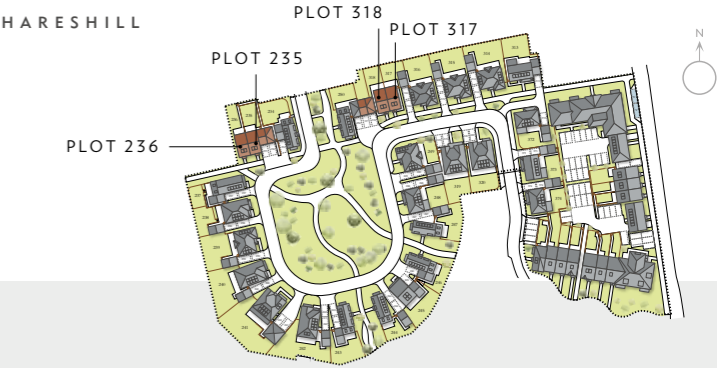
◀ ▶ Measurement Points C Cupboard DW Dishwasher WM Space for Washing Machine  
B Boiler W Wardrobe SW Space for Wardrobe LH Loft Hatch

FIRST FLOOR



PRINCIPAL BEDROOM	4.15M X 3.58M	13' 8" X 11' 9"
BEDROOM 2 / HOME OFFICE	4.15M X 2.70M	13' 8" X 8' 10"

Floorplans shown for Hareshill are for approximate measurements only. Exact layouts and sizes may vary. All measurements may vary within a tolerance of 5%. The dimensions are not intended to be used for carpet sizes, appliance sizes or items of furniture. For exact details of garden sizing and patio layouts, please speak to our Sales Consultants.





Computer generated image, indicative only.

## THREE BEDROOM HOMES

A GREENER PLACE TO CALL HOME

*A choice of different three bedroom homes at Harehill means there is something for everyone, each with their own private patio and garden.*



Photography and lifestyle imagery, indicative only.



Photography of the Showhome at Harehill is indicative only.



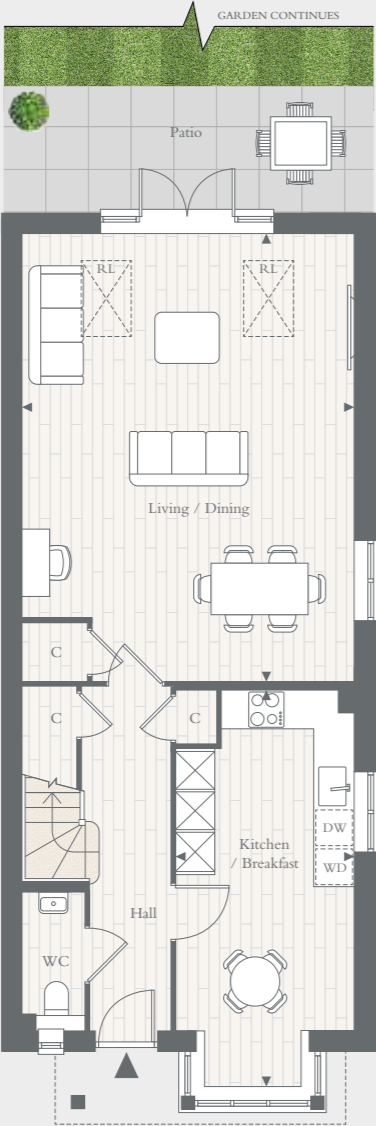
Computer generated image, indicative only.

THE COPSE

THREE BEDROOMS – PLOT 237

Total area: 116.4 sq m 1,253 sq ft

GROUND FLOOR



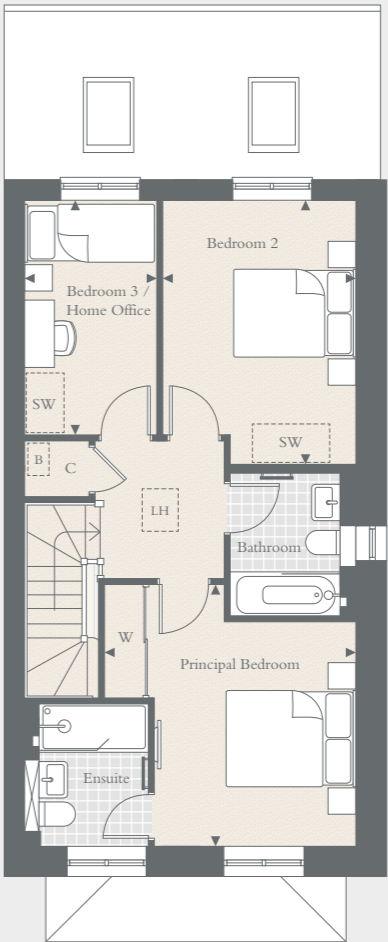
KITCHEN / BREAKFAST	6.19M X 2.74M	20' 4" X 9' 0"
LIVING / DINING	6.96M X 5.13M	21' 10" X 16' 10"

◀ ▶ Measurement Points C Cupboard DW Dishwasher WD Integrated Washer/Dryer RL Rooflight  
B Boiler W Wardrobe SW Space for Wardrobe LH Loft Hatch

PLOT 237



FIRST FLOOR



PRINCIPAL BEDROOM	4.07M X 3.90M	13' 4" X 12' 10"
BEDROOM 2	4.09M X 2.98M	13' 5" X 9' 9"
BEDROOM 3 / HOME OFFICE	3.63M X 2.06M	11' 11" X 6' 9"

Floorplans shown for Hareshill are for approximate measurements only. Exact layouts and sizes may vary. All measurements may vary within a tolerance of 5%. The dimensions are not intended to be used for carpet sizes, appliance sizes or items of furniture. For exact details of garden sizing and patio layouts, please speak to our Sales Consultants.



Computer generated image, indicative only.



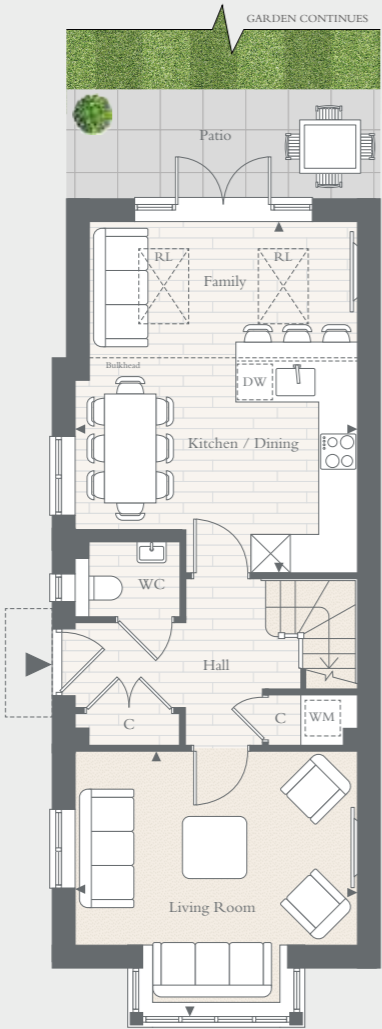
Computer generated image, indicative only.

THE BEECH

THREE BEDROOMS – PLOTS 234\*, 243, 244\*, 246, 247\* & 250

Total area: 128.1 sq m 1,380 sq ft

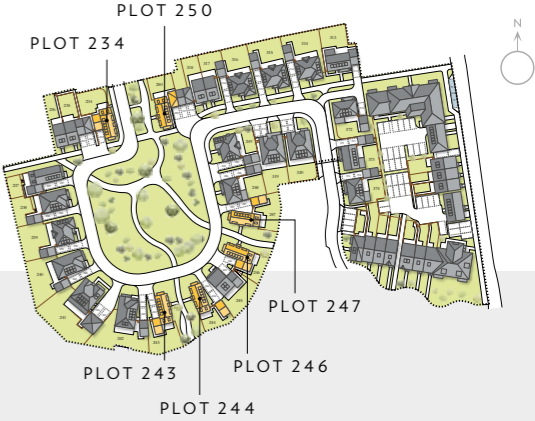
GROUND FLOOR



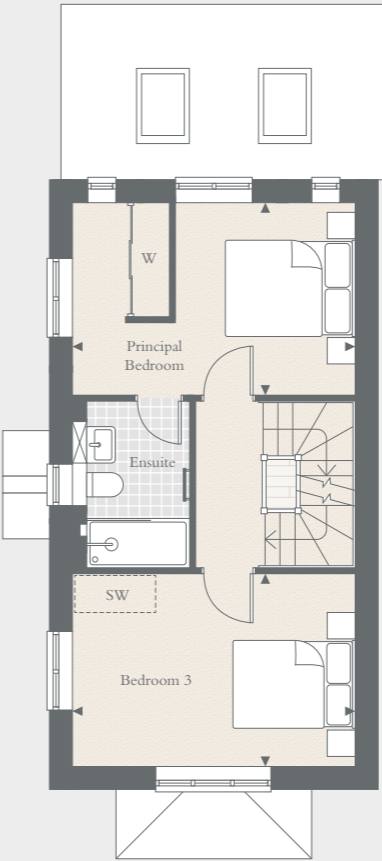
KITCHEN / DINING / FAMILY	5.47M X 4.40M	18' 0" X 14' 5"
LIVING ROOM	4.40M X 3.93M	14' 5" X 12' 11"

\*Plots are handed

◀ ▶ Measurement Points C Cupboard DW Dishwasher WM Space for Washing Machine RL Rooflight  
B Boiler W Wardrobe SW Space for Wardrobe LH Loft Hatch

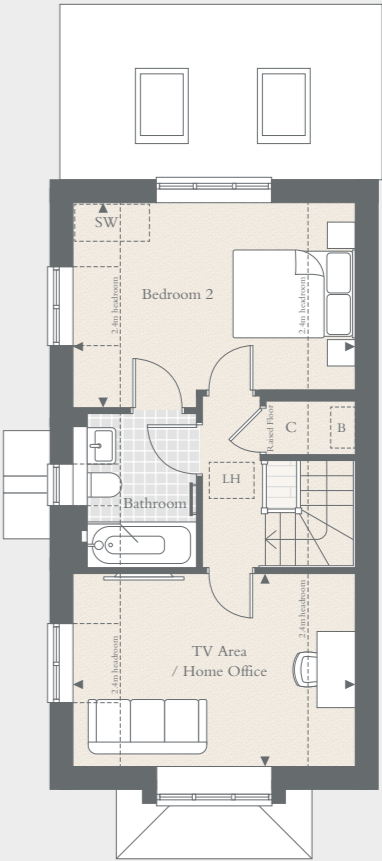


FIRST FLOOR



PRINCIPAL BEDROOM	4.40M X 3.00M	14' 5" X 9' 10"
BEDROOM 3	4.40M X 3.01M	14' 5" X 9' 11"

SECOND FLOOR



BEDROOM 2	4.40M X 3.17M	14' 5" X 10' 5"
TV AREA / HOME OFFICE	4.40M X 3.01M	14' 5" X 9' 11"

Floorplans shown for Harehill are for approximate measurements only. Exact layouts and sizes may vary. All measurements may vary within a tolerance of 5%. The dimensions are not intended to be used for carpet sizes, appliance sizes or items of furniture. For exact details of garden sizing and patio layouts, please speak to our Sales Consultants.



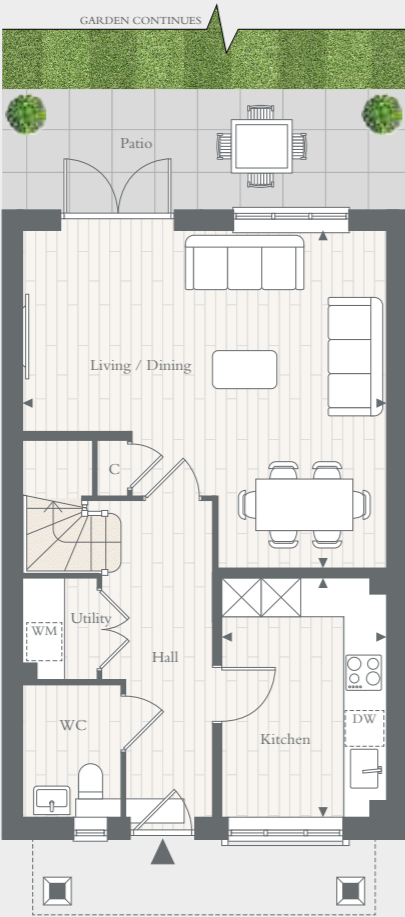
Computer generated image, indicative only.

THE HAZEL

THREE BEDROOMS – PLOT 245

Total area: 102.9 sq m 1,109 sq ft

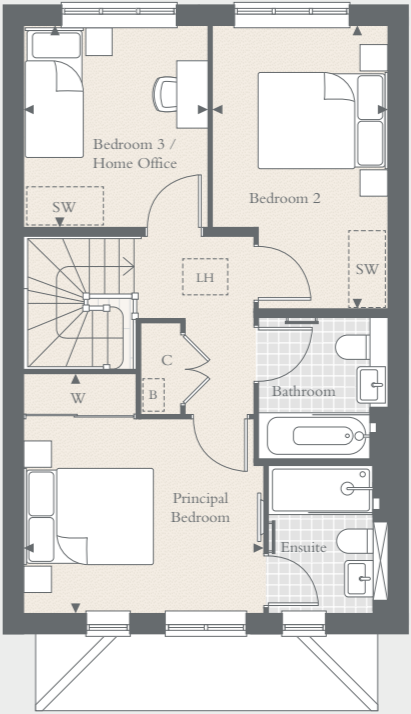
GROUND FLOOR  
ADAPTABLE UNIT



KITCHEN	3.73M X 2.55M	12' 3" X 8' 4"
LIVING / DINING	5.64M X 5.26M	18' 6" X 17' 3"

◀ ▶ Measurement Points C Cupboard DW Dishwasher WM Space for Washing Machine  
B Boiler W Wardrobe SW Space for Wardrobe LH Loft Hatch

FIRST FLOOR



PRINCIPAL BEDROOM	3.70M X 3.70M	12' 2" X 12' 2"
BEDROOM 2	4.39M X 2.71M	14' 5" X 8' 11"
BEDROOM 3 / HOME OFFICE	3.13M X 2.84M	10' 3" X 9' 4"

Floorplans shown for Hareshill are for approximate measurements only. Exact layouts and sizes may vary. All measurements may vary within a tolerance of 5%. The dimensions are not intended to be used for carpet sizes, appliance sizes or items of furniture. For exact details of garden sizing and patio layouts, please speak to our Sales Consultants.







Computer generated image, indicative only.



Computer generated image, indicative only.

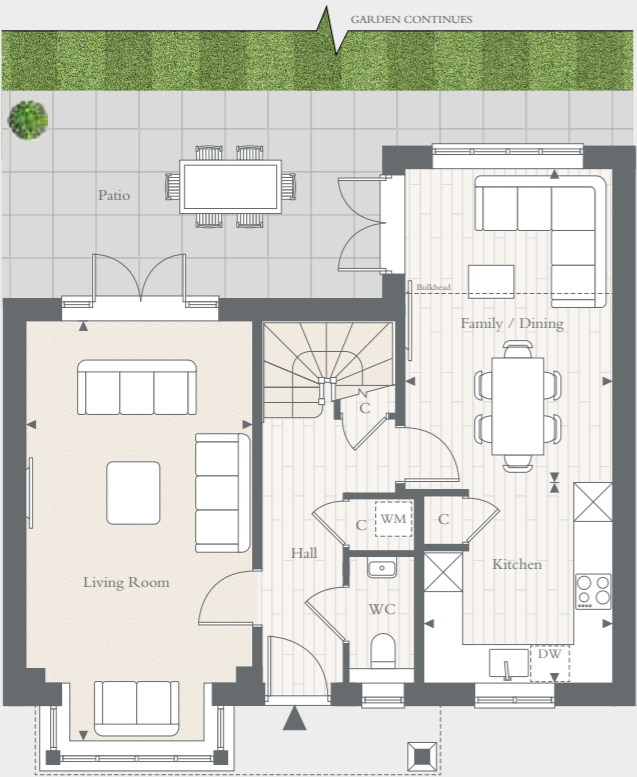


THE EVERGREEN

THREE BEDROOMS – PLOTS 248, 313\*, 372, 373 & 374

Total area: 112.5 sq m 1,211 sq ft

GROUND FLOOR

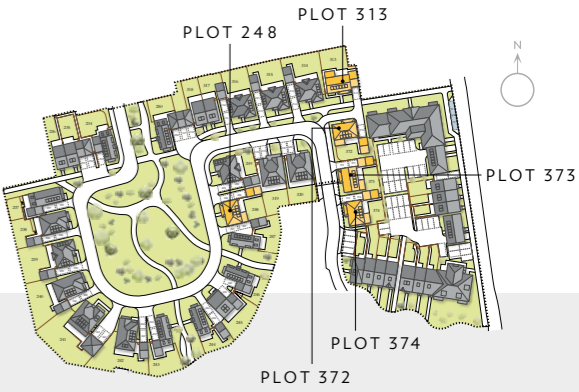


Side elevation for plot 372

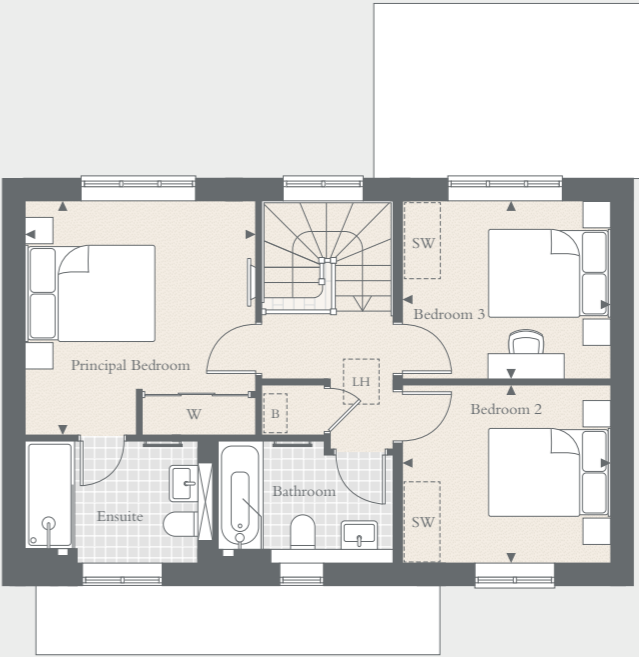
KITCHEN	3.13M X 2.91M	10' 3" X 9' 7"
FAMILY / DINING	4.88M X 3.25M	16' 0" X 10' 6"
LIVING ROOM	6.56M X 3.53M	21' 7" X 11' 7"

\*Plots are handed

◀ ▶ Measurement Points C Cupboard DW Dishwasher WM Space for Washing Machine  
B Boiler W Wardrobe SW Space for Wardrobe LH Loft Hatch



FIRST FLOOR



Side elevation for plot 372

PRINCIPAL BEDROOM	3.65M X 3.58M	12' 0" X 11' 9"
BEDROOM 2	3.30M X 2.77M	10' 10" X 9' 1"
BEDROOM 3	3.30M X 2.77M	10' 10" X 9' 1"

Floorplans shown for Hareshill are for approximate measurements only. Exact layouts and sizes may vary. All measurements may vary within a tolerance of 5%. The dimensions are not intended to be used for carpet sizes, appliance sizes or items of furniture. For exact details of garden sizing and patio layouts, please speak to our Sales Consultants.

## FOUR BEDROOM HOMES

A GREENER PLACE TO CALL HOME

*The four bedroom homes at Harehill are perfect for family life  
— with a variety of styles each with generous outdoor space.*



Photography and lifestyle imagery, indicative only.



Photography of the Showhome at Harehill is indicative only.



Computer generated image, indicative only.



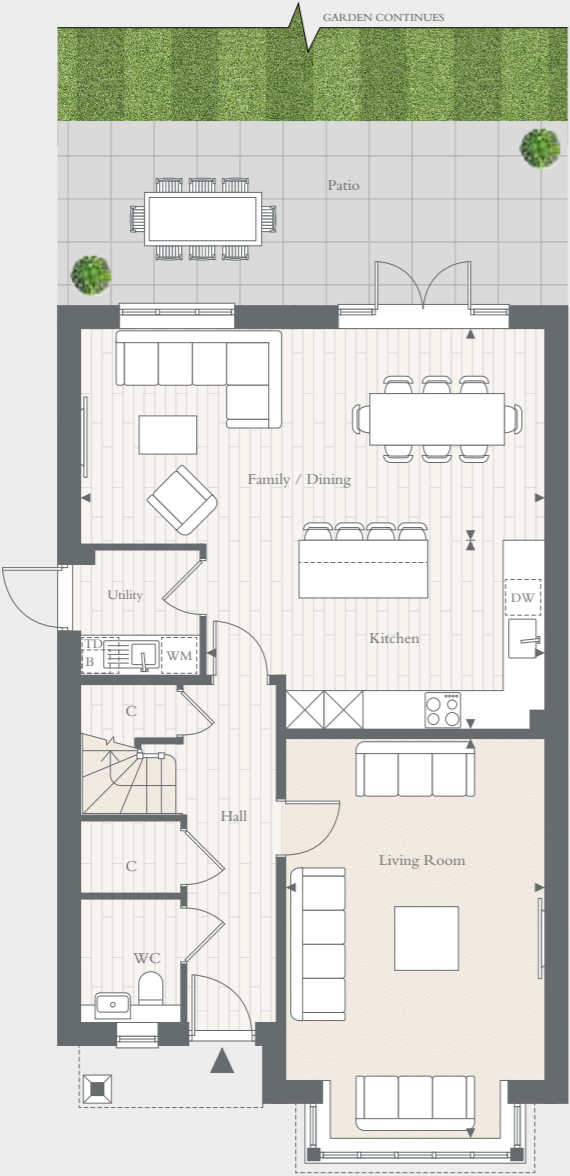
Computer generated image, indicative only.

THE FAIRHAVEN

FOUR BEDROOMS – PLOTS 240 & 242

Total area: 166.0 sq m 1,787 sq ft

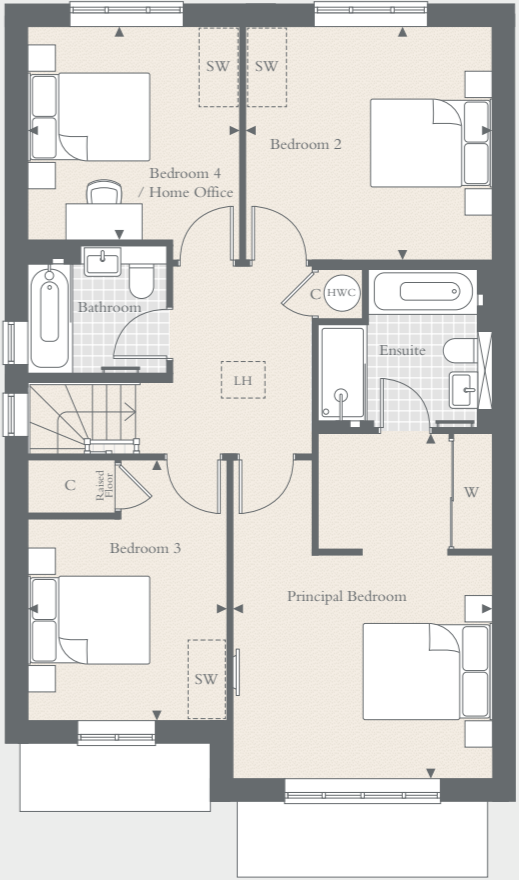
GROUND FLOOR  
ADAPTABLE UNIT



KITCHEN	5.28M X 2.95M	13' 3" X 9' 8"
FAMILY / DINING	7.23M X 3.30M	23' 9" X 10' 10"
LIVING ROOM	6.23M X 4.04M	20' 5" X 13' 3"

◀ ▶ Measurement Points C Cupboard DW Dishwasher HWC Hot Water Cylinder WM Space for Washing Machine  
B Boiler W Wardrobe SW Space for Wardrobe LH Loft Hatch

FIRST FLOOR



PRINCIPAL BEDROOM	5.38M X 4.04M	17' 8" X 13' 3"
BEDROOM 2	3.84M X 3.64M	12' 7" X 11' 11"
BEDROOM 3	4.07M X 3.10M	13' 4" X 10' 2"
BEDROOM 4 / HOME OFFICE	3.36M X 3.30M	11' 0" X 10' 10"

Floorplans shown for Hareshill are for approximate measurements only. Exact layouts and sizes may vary. All measurements may vary within a tolerance of 5%. The dimensions are not intended to be used for carpet sizes, appliance sizes or items of furniture. For exact details of garden sizing and patio layouts, please speak to our Sales Consultants.



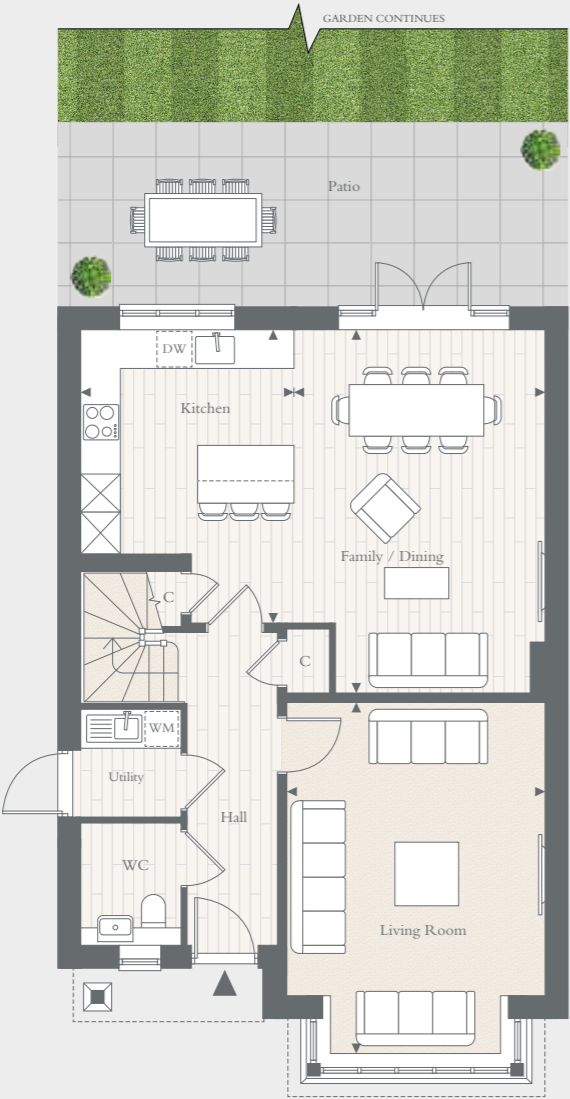
Computer generated image, indicative only.

THE ASHFORD

FOUR BEDROOMS – PLOT 238

Total area: 146.51 sq m 1,577 sq ft

GROUND FLOOR  
ADAPTABLE UNIT



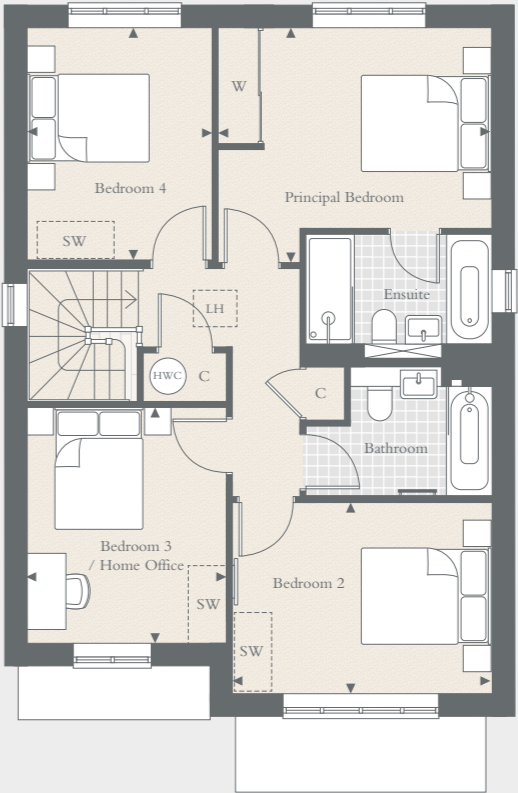
KITCHEN	4.56M X 3.30M	15' 0" X 10' 10"
FAMILY / DINING	5.66M X 3.93M	18' 7" X 12' 11"
LIVING ROOM	5.46M X 4.04M	17' 11" X 13' 3"

◀ ▶ Measurement Points C Cupboard DW Dishwasher HWC Hot Water Cylinder WM Space for Washing Machine  
B Boiler W Wardrobe SW Space for Wardrobe LH Loft Hatch

PLOT 238



FIRST FLOOR



PRINCIPAL BEDROOM	4.25M X 3.66M	13' 11" X 12' 0"
BEDROOM 2	4.04M X 2.98M	13' 3" X 9' 9"
BEDROOM 3 / HOME OFFICE	3.67M X 3.10M	12' 1" X 10' 2"
BEDROOM 4	3.61M X 2.89M	11' 10" X 9' 6"

Floorplans shown for Hares Hill are for approximate measurements only. Exact layouts and sizes may vary. All measurements may vary within a tolerance of 5%. The dimensions are not intended to be used for carpet sizes, appliance sizes or items of furniture. For exact details of garden sizing and patio layouts, please speak to our Sales Consultants.





THE CHESTNUT  
PLOT 314

Computer generated image, indicative only.



Computer generated image, indicative only.



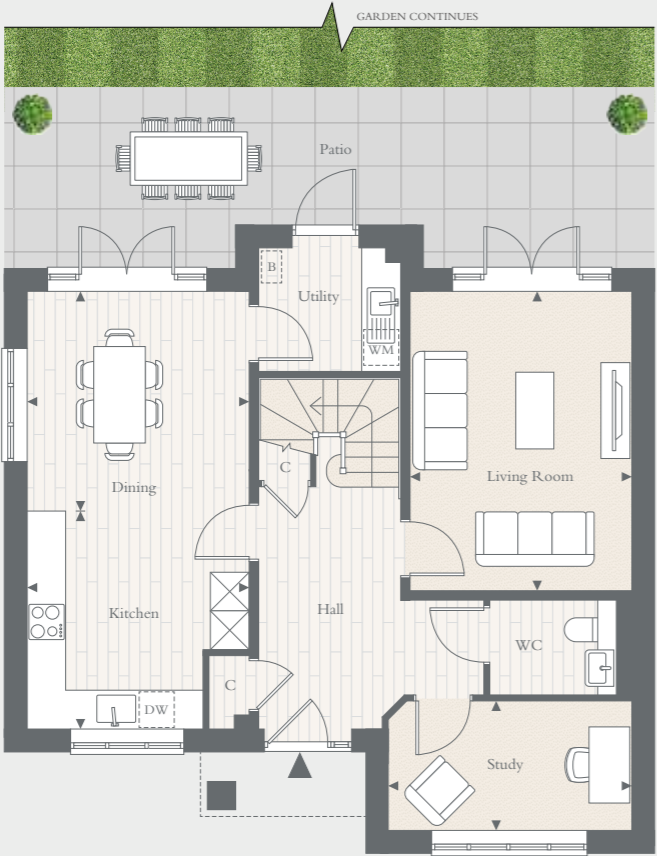
Computer generated image, indicative only.

THE CHESTNUT

FOUR BEDROOMS – PLOTS 239, 249, 314, 315 & 316

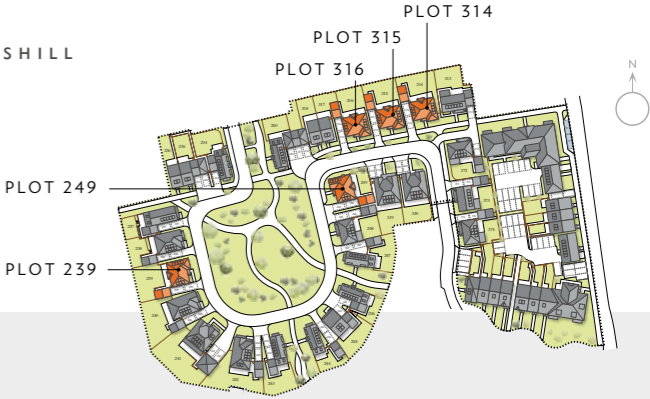
Total area: 143.3 sq m 1,543 sq ft

GROUND FLOOR  
ADAPTABLE UNIT

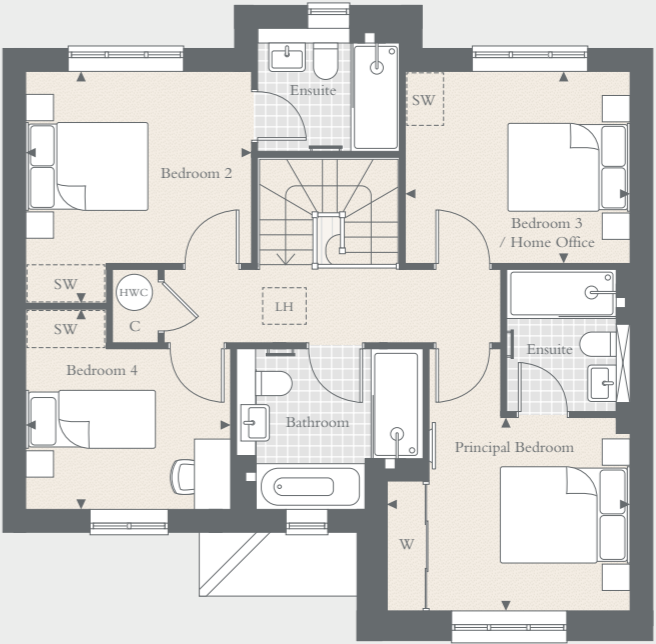


KITCHEN	3.45M X 3.41M	11' 4" X 11' 2"
LIVING ROOM	4.67M X 3.45M	15' 4" X 11' 4"
DINING	3.45M X 3.42M	11' 4" X 11' 3"
STUDY	3.79M X 2.02M	12' 5" X 6' 8"

◀ ▶ Measurement Points C Cupboard DW Dishwasher HWC Hot Water Cylinder WM Space for Washing Machine  
B Boiler W Wardrobe SW Space for Wardrobe LH Loft Hatch



FIRST FLOOR



PRINCIPAL BEDROOM	3.79M X 3.01M	12' 5" X 9' 10"
BEDROOM 2	3.61M X 3.51M	11' 10" X 11' 6"
BEDROOM 3	3.51M X 3.00M	11' 6" X 9' 10"
BEDROOM 4 / HOME OFFICE	3.18M X 3.12M	10' 5" X 10' 3"

Floorplans shown for Hareshill are for approximate measurements only. Exact layouts and sizes may vary. All measurements may vary within a tolerance of 5%. The dimensions are not intended to be used for carpet sizes, appliance sizes or items of furniture. For exact details of garden sizing and patio layouts, please speak to our Sales Consultants.



Computer generated image, indicative only.

THE REDBOURNE

FOUR BEDROOMS – PLOTS 319 & 320

Total area: 158.6 sq m 1,708 sq ft

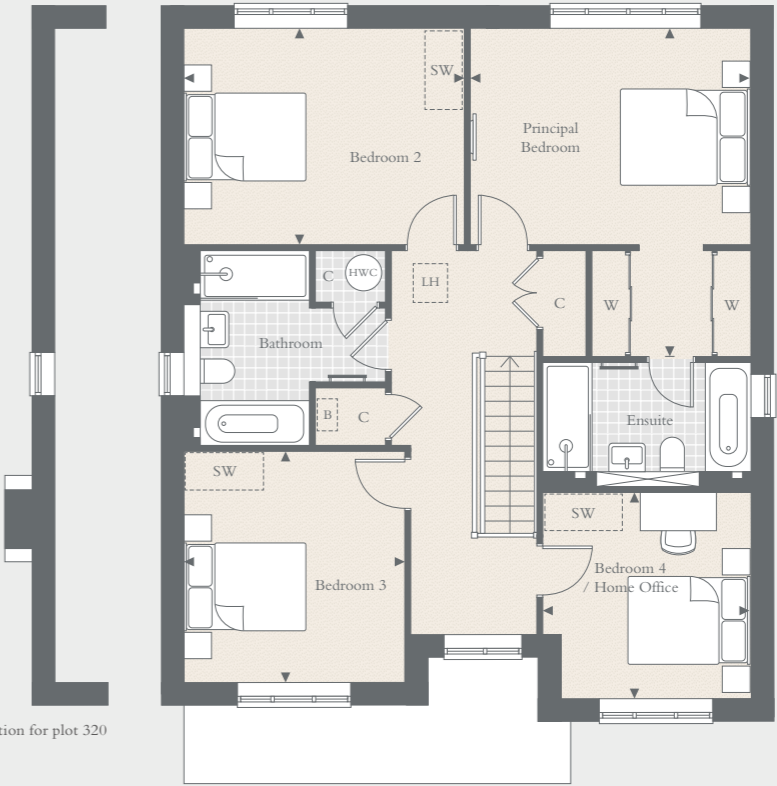


GROUND FLOOR

FIRST FLOOR



KITCHEN	4.10M X 3.18M	13' 5" X 10' 5"
FAMILY / DINING	7.13M X 3.62M	18' 7" X 11' 1"
LIVING ROOM	6.14M X 3.44M	20' 2" X 11' 4"
GARAGE	6.00M X 3.00M	19' 8" X 9' 10"



PRINCIPAL BEDROOM	5.10M X 4.37M	16' 9" X 14' 4"
BEDROOM 2	4.37M X 3.36M	14' 4" X 11' 0"
BEDROOM 3	3.60M X 3.44M	11' 4" X 11' 10"
BEDROOM 4 / HOME OFFICE	3.24M X 3.21M	10' 8" X 10' 6"

◀ ▶ Measurement Points C Cupboard DW Dishwasher HWC Hot Water Cylinder WM Space for Washing Machine  
TD Space for Tumble Dryer B Boiler W Wardrobe SW Space for Wardrobe LH Loft Hatch

Floorplans shown for Hareshill are for approximate measurements only. Exact layouts and sizes may vary. All measurements may vary within a tolerance of 5%. The dimensions are not intended to be used for carpet sizes, appliance sizes or items of furniture. For exact details of garden sizing and patio layouts, please speak to our Sales Consultants.

# FIVE BEDROOM HOME

A GREENER PLACE TO CALL HOME

*The perfect blend of comfort and style – thoughtfully designed layouts  
paired with generous gardens create an ideal setting for family life.*



Photography and lifestyle imagery, indicative only.



Photography of the Showhome at Harehill is indicative only.



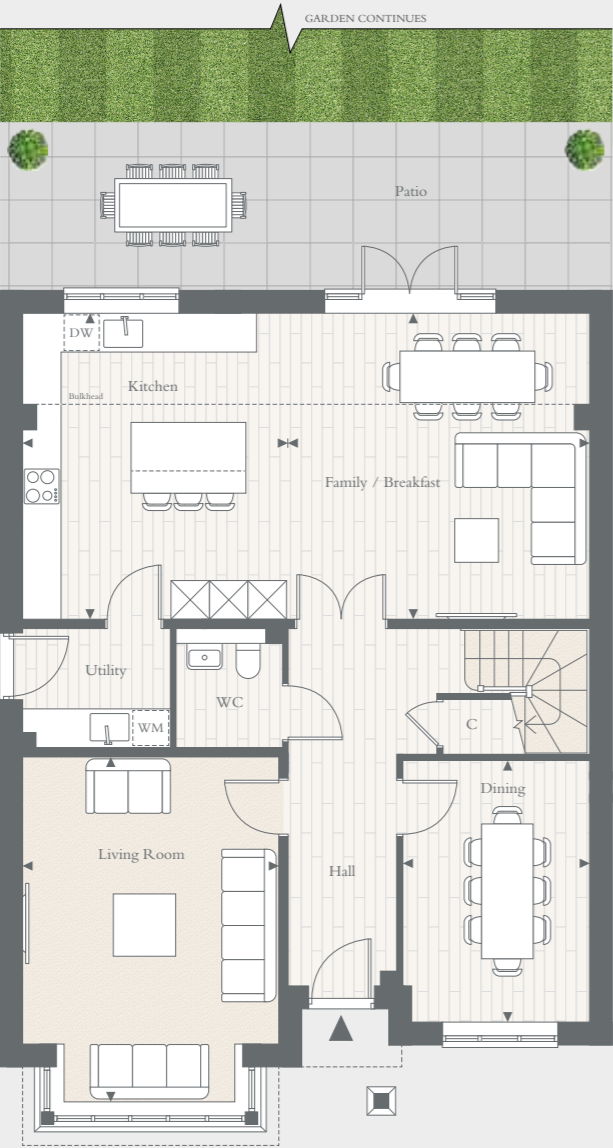
Computer generated image, indicative only.

THE HIGHGROVE

FIVE BEDROOMS – PLOT 241

Total area: 181.8 sq m 1,956 sq ft

GROUND FLOOR

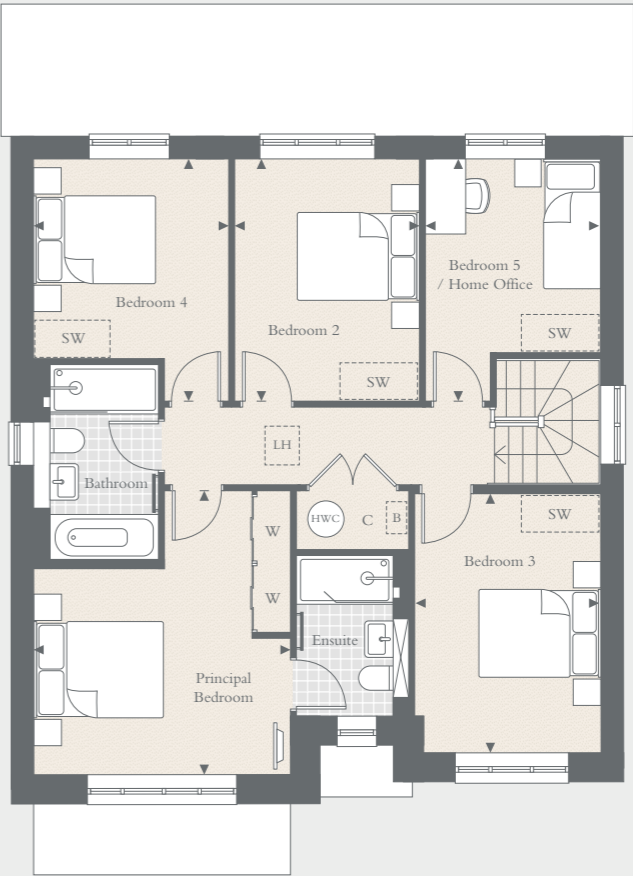


KITCHEN	4.76M X 4.13M	13' 7" X 10' 6"
FAMILY / BREAKFAST	4.76M X 4.71M	15' 7" X 15' 6"
LIVING ROOM	5.39M X 4.0M	17' 8" X 13' 2"
DINING	4.07M X 2.9M	13' 4" X 9' 6"

◀ ▶ Measurement Points   C Cupboard   DW Dishwasher   HWC Hot Water Cylinder   WM Space for Washing Machine  
B Boiler   W Wardrobe   SW Space for Wardrobe   LH Loft Hatch



FIRST FLOOR



PRINCIPAL BEDROOM	4.41M X 4.0M	14' 6" X 13' 2"
BEDROOM 2	3.76M X 2.88M	12' 4" X 9' 5"
BEDROOM 3	4.02M X 2.9M	13' 2" X 9' 6"
BEDROOM 4	3.76M X 3.04M	12' 4" X 10' 0"
BEDROOM 5 / HOME OFFICE	3.76M X 2.7M	12' 4" X 8' 11"

Floorplans shown for Hareshill are for approximate measurements only. Exact layouts and sizes may vary. All measurements may vary within a tolerance of 5%. The dimensions are not intended to be used for carpet sizes, appliance sizes or items of furniture. For exact details of garden sizing and patio layouts, please speak to our Sales Consultants.



# SPECIFICATION

DISCOVER THE BERKELEY QUALITY

## INDIVIDUALLY DESIGNED KITCHEN

- Shaker style kitchens incorporating a Montelli worktop and tiled splashback
- Bosch multifunctional fan assisted oven
- Bosch built-in microwave in 2 and 3 bedroom homes
- Bosch built-in combination microwave in 4 and 5 bedroom homes
- Bosch induction hob with touch controls
- Canopy extractor hood
- Beko integrated fridge/freezer
- Integrated wine cooler
- Beko integrated dishwasher
- Beko integrated washer/dryer, only when located in kitchen
- Space and plumbing for separate washer/dryer when not in the kitchen
- Belfast sink with single mixer tap with pull out spray
- LED under wall unit lighting

## QUALITY BATHROOMS

- Contemporary styled bathrooms
- Chrome taps
- Vanity unit to bathroom†
- Inset mirrored cabinet to principal ensuite\*
- Full width mirror to bathroom and cloaks\*
- Walk-in shower to principal ensuite
- Bath with shower and screen to bathroom and ensuite 2, where applicable
- WC with chrome flush plate, concealed cistern and soft-close seat
- Heated towel rail to all bathrooms
- Ceramic wall tiles to selected areas

## HEATING, ELECTRICAL & LIGHTING

- Energy efficient gas fired central heating and hot water system with central programmer
- Radiators with individual thermostatic control to all rooms except where room thermostat fitted
- Centralised mechanical extract ventilation to kitchen, bathroom, ensuite(s) and washing machine cupboards
- LED downlights to kitchen/breakfast (to selected plots), hall/landing, all bathrooms and cloakroom
- Shaver sockets provided to bathroom and ensuite(s)

## HOME ENTERTAINMENT & COMMUNICATIONS

- TV points to living area
- Cat 6 pre-wired home network points provided to living area, kitchen/breakfast (where applicable) and all bedrooms
- USB charging points provided to kitchen and all bedrooms
- Provision for home office (refer to plot specific drawing)

## INTERIOR FINISHES

- Shaker 2-panel painted internal doors with chrome finish door furniture
- Glazed door to living room and kitchen
- Painted staircase with oak handrail
- Full height wardrobe with sliding doors to principal bedroom
- Satin paint finish to all internal joinery
- Wood-effect flooring throughout the ground floor (except where living room is separate to dining area)
- Fitted carpets to the remainder of the property

## EXTERNAL

- Feature entrance door with chrome door furniture
- uPVC windows and casement doors
- Garage with power and light†
- Parking space(s) provided
- Private driveway parking†
- Landscaped front garden and turf to rear gardens
- Natural sandstone paving to paths and patio areas
- External power point
- External tap and water butt provided
- Electric Vehicle Charging
- PV Panels to roofs

## SECURITY & PEACE OF MIND

- High security front entrance door with multi-point locking system
- External light with PIR control to house frontage
- Facility for future wireless alarm system
- Mains-fed smoke detector with battery back up, fitted to hall and landing
- 10-Year Premier Warranty Scheme
- 2-Year Berkeley Warranty

\*Subject to window position. †To selected homes.

Your attention is drawn to the fact that in rare circumstances it may not be possible to obtain the exact products or materials referred to in the specification. Berkeley reserves the right to alter, amend or update the specification, which may include changes in the colour, material and/or brand specified. In such cases, a similar alternative will be provided. Berkeley reserves the right to make these changes as required. A number of choices and options are available to personalise your home. Choices and options are subject to timeframes, availability and change.

HARESHILL



## CONTACT US

---

VISIT [HARESHILL-FLEET.CO.UK](http://HARESHILL-FLEET.CO.UK)  
OR CALL 01252 233 070

Hareshill,  
Hitches Lane, Crookham Village,  
Fleet, Hampshire GU51 5EL



Maps are not to scale and show approximate locations only. The information in this document is indicative and is intended to act as a guide only as to the finished product. Accordingly, due to Berkeley's policy of continuous improvement, the finished product may vary from the information provided. It may not be possible to provide the exact materials as referred to in the brochure. In such cases a suitable alternative will be provided. Berkeley reserves the right to make these changes as required. These particulars should not be relied upon as statements of fact or representations and applicants must satisfy themselves by inspection or otherwise as to their correctness. This information does not constitute a contract or warranty. The dimensions given on plans are subject to minor variations and are not intended to be used for carpet sizes, appliance sizes or items of furniture. Hareshill is a marketing name and will not necessarily form part of the approved postal address. Applicants are advised to contact Berkeley to ascertain the availability of any particular property. Sold subject to planning permission. S891/05CA/0525

Berkeley Homes (Southern) Limited, registered in England and Wales with Company Registration Number 1454061.  
Registered Office: Berkeley House, 19 Portsmouth, Road, Cobham, Surrey, KT11 1JG.



