

SOUTHERN COUNTIES EDUCATION GUIDE

Your guide to schools and universities
in Hampshire, Kent, Surrey and Sussex





CONTENTS

A REGION OF ACADEMIC EXCELLENCE	2
<hr/>	
HAMPSHIRE	4
Nurseries and pre-schools	8
Primary schools	9
Secondary schools	10
Independent schools	11
KENT	12
Nurseries and pre-schools	16
Primary schools	18
Secondary schools	20
Independent schools	22
SURREY	24
Nurseries and pre-schools	28
Primary schools	29
Secondary schools	30
Independent schools	30
SUSSEX	32
Nurseries and pre-schools	36
Primary schools	37
Secondary schools	38
Independent schools	39
UNIVERSITIES	40
Hampshire universities	44
Kent universities	44
Surrey universities	44
Sussex universities	45
London universities	45
THE BERKELEY DIFFERENCE	46

A REGION OF ACADEMIC EXCELLENCE



IMAGE COURTESY OF NOTRE DAME SCHOOL, SURREY

The Southern Counties are home to some of the country’s finest independent and state nursery, primary and secondary schools, many of which are conveniently located for our developments in Hampshire, Kent, Surrey and Sussex.

Within the state sector there are many schools that achieve excellent results year after year, including selective grammar schools. Highly sought-after, grammar schools choose their pupils based on an entrance exam to determine whether they are able enough to learn in this environment.

Independent schools range from single sex to co-educational, day to full boarding, and highly

academic to those that focus on the creative arts, giving parents a wealth of choice when it comes to finding the right place for their child.

For older students, there are a number of leading universities across the counties, while London’s renowned institutions such as Imperial College London are within easy reach thanks to good transport links.



IMAGE COURTESY OF NOTRE DAME SCHOOL, SURREY

HAMPSHIRE

Idyllic countryside, diverse cities, and a wealth of heritage make Hampshire a highly sought-after place to live.

HAMPSHIRE

Hampshire offers an excellent range of state and independent schools within easy reach of our two developments in the county, Hartland Village and Hareshill.



NURSERIES & PRE-SCHOOLS

- 1 Bright Horizons Nursery & Pre-school
- 2 Curious Explorers Day Nursery and Pre-school Fleet
- 3 Parsonage Farm Nursery School
- 4 Tavistock Pre-school

PRIMARY SCHOOLS

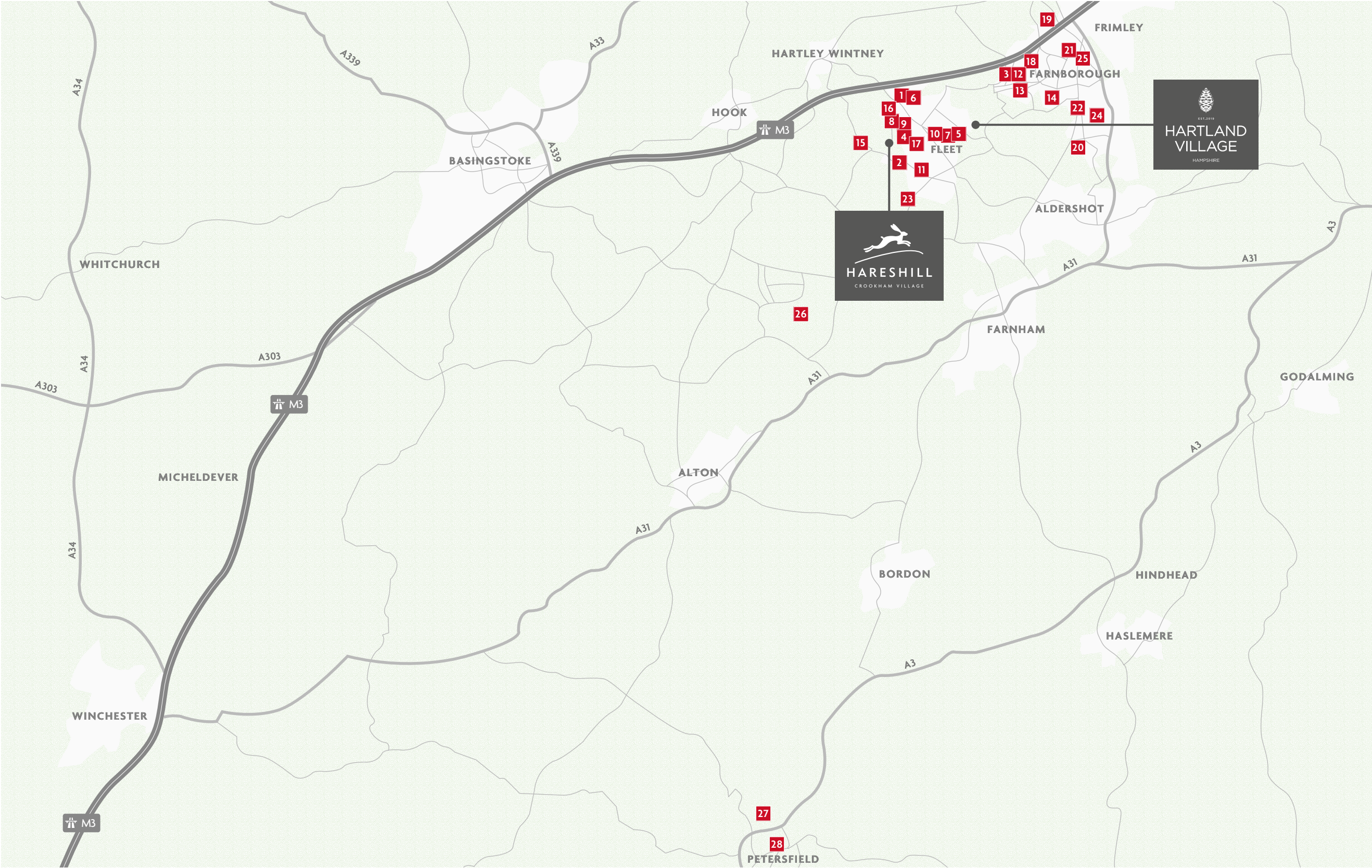
- 5 Fleet Infant School
- 6 Elvetham Heath Primary School
- 7 Velmead Junior School
- 8 Tavistock Infant School
- 9 All Saints Junior School
- 10 Heatherside Infant and Junior School
- 11 Crookham C of E Infant School
- 12 Parsonage Farm Infant School
- 13 Southwood Infant School
- 14 Tower Hill Primary School
- 15 Dogmersfield C of E Primary School

SECONDARY SCHOOLS

- 16 Calthorpe Park School
- 17 Court Moor School
- 18 Cove School
- 19 Bohunt Farnborough
- 20 The Wavell School
- 21 The Sixth Form College Farnborough
- 22 Farnborough College of Technology

INDEPENDENT SCHOOLS

- 23 St Nicholas' School
- 24 Salesian College
- 25 Farnborough Hill School
- 26 Lord Wandsworth College
- 27 Bedales School
- 28 Churcher's College



Map is not to scale and is indicative only.

HAMPSHIRE

NURSERIES & PRE-SCHOOLS

1
BRIGHT HORIZONS NURSERY AND PRE-SCHOOL
Gender: Girls and boys
Age: 3 months-5 years

Springfield House, Redfields Lane,
Church Crookham, Fleet GU52 0RJ
brighthorizons.co.uk

Overview
A welcoming nursery set in a quiet and charming area of Church Crookham. Each of the large rooms has been designed to perfectly support different age groups, filled with exciting resources and toys, and enjoys free-flow access to the garden all year round.

2
CURIOUS EXPLORERS DAY NURSERY AND PRE-SCHOOL FLEET
Gender: Girls and boys
Age: 0-5 years

194 Clarence Road, Fleet GU51 3XP
curiousexplorers.co.uk

Overview
Set within a former family home that has been transformed into a home away from home, this nursery features a spacious garden complete with an apple tree and area for children to grow their own fruit and vegetables.

3
PARSONAGE FARM NURSERY SCHOOL
Gender: Girls and boys
Age: 3-5 years

Cherry Tree Close, Farnborough GU14 9TT
parsonagefarmschool.co.uk

Overview
Attached to Parsonage Farm Infant School, this nursery is a fun, busy and friendly setting where children learn through exploration, interaction and play. Every child is supported to develop a lifelong love of learning through play and short adult-led sessions.

4
TAVISTOCK PRE-SCHOOL
Gender: Girls and boys
Age: 2½-5 years

Broadacres, Fleet GU51 4EU
tavistockinfants.co.uk

Overview
A small and friendly pre-school providing a safe, happy and nurturing environment in a purpose built setting with a garden and playground. It aims to give children a high-quality learning environment that ignites curiosity, imagination, confidence, and resilience.

PRIMARY SCHOOLS

5
FLEET INFANT SCHOOL
Gender: Girls and boys
Age: 4-7 years

Velmead Road, Fleet GU52 7LQ
fleet.hants.sch.uk

Overview
A thriving, happy infant school on the outskirts of Fleet, close to a wonderful wooded area and set in natural heathland. In addition to the classrooms and outdoor environment the children have access to the hall, a music and drama studio, and the library.

6
ELVETHAM HEATH PRIMARY SCHOOL
Gender: Girls and boys
Age: 4-11 years

The Key, Elvetham Heath, Fleet GU51 1DP
ehps.hants.sch.uk

Overview
Highly regarded locally and within Hampshire, this school achieves outcomes that are consistently above local, county and national levels. It enjoys modern and spacious facilities, including two halls, a food technology room, a music and drama room, computer suite and an all-weather astro pitch.

7
VELMEAD JUNIOR SCHOOL
Gender: Girls and boys
Age: 7-11 years

Velmead Road, Fleet GU52 7LG
velmead.hants.sch.uk

Overview
Sharing a site with Fleet Infant School, this school offers a range of extracurricular clubs alongside its engaging curriculum. It also takes part in community events and celebrates children's academic, creative, sporting, musical and social success and achievement.

8
TAVISTOCK INFANT SCHOOL
Gender: Girls and boys
Age: 4-7 years

Broadacres, Fleet GU51 4EB
tavistockinfants.co.uk

Overview
This welcoming two-form entry infant school provides a nurturing environment for children to start their learning journey. With a motto of 'Achieving Happily Together', it aims to encourage and develop children who are keen to learn, show resilience and become rights respecting citizens.

9
ALL SAINTS JUNIOR SCHOOL
Gender: Girls and boys
Age: 7-11 years

Lea Wood Road, Fleet GU51 5AJ
allsaintsfleet.co.uk

Overview
Situated next to Tavistock Infant School, All Saints is a Specialist Mathematics Hub School, offering a broad curriculum in which every subject has strong leadership from staff who have expertise in their subjects.

10
HEATHERSIDE INFANT AND JUNIOR SCHOOL
Gender: Girls and boys
Age: 4-11 years

Reading Road South, Fleet GU52 7TH
heathersideinfantschool.co.uk
heatherside-jun.hants.sch.uk

Overview
Sharing a site, this infant and junior school enjoys extensive grounds and outdoor space in which it runs Forest School activities to help build children's resilience, confidence, independence and communication skills.

11
CROOKHAM C OF E INFANT SCHOOL
Gender: Girls and boys
Age: 4-7 years

Gally Hill Road, Church Crookham, Fleet GU52 6PU
crookhaminfants.co.uk

Overview
A nurturing, friendly, two-form entry Church of England school which has high expectations and helps children to make the best progress possible in all aspects of their learning, as well as in their personal and social development.

12
PARSONAGE FARM INFANT SCHOOL
Gender: Girls and boys
Age: 4-7 years

Cherry Tree Close, Farnborough GU14 9TT
parsonagefarmschool.co.uk

Overview
A two-form entry infant school with a close-knit community feel and nurturing environment. Strong relationships, embedded school values, exciting learning opportunities and high expectations give children the confidence and skills to be independent, make decisions, connections and become lifelong learners.

13
SOUTHWOOD INFANT SCHOOL
Gender: Girls and boys
Age: 4-7 years

Southwood Lane, Southwood,
Farnborough GU14 0NE
southwoodinfantschool.co.uk

Overview
Located on the outskirts of Farnborough, Southwood Infant School provides an inspiring curriculum built around interesting topics and first-hand experiences which excites and motivates all learners.

14
TOWER HILL PRIMARY SCHOOL
Gender: Girls and boys
Age: 4-11 years

Fowler Road, Farnborough GU14 0BW
towerhill.hants.sch.uk

Overview
Situated in the ancient village of Cove in the western part of Farnborough, Tower Hill is a two-form entry, inclusive primary school that sits at the heart of a vibrant and diverse local community.

15
DOGMERSFIELD C OF E PRIMARY SCHOOL
Gender: Girls and boys
Age: 4-11 years

Dogmersfield, Hook RG27 8SS
dogmersfield.hants.sch.uk

Overview
This small one-form entry school has a family atmosphere and uses an approach to learning called Mantle of the Expert, where children are part of a fictional team who are commissioned to carry out different roles and responsibilities relating to different subjects.



Forest School is an inspirational child-centred learning process that takes place in natural spaces outside, where children learn personal, social and technical skills.



SECONDARY SCHOOLS

16

CALTHORPE PARK SCHOOL
Gender: Girls and boys
Age: 11-16 years

Hitches Lane, Fleet GU51 5JA
cps.hants.sch.uk

Overview

A highly successful secondary school that is currently growing, supported by substantial local authority investment. As well as its academic achievements, its enrichment and charity events are also renowned, including Model United Nations, Citizenship Days and an array of music, drama and art events.

17

COURT MOOR SCHOOL
Gender: Girls and boys
Age: 11-16 years

Spring Woods, Fleet GU52 7RY
court-moor.hants.sch.uk

Overview

Court Moor enjoys a good local reputation and strong relationship with the community; it is therefore regularly over-subscribed. It prides itself on a caring approach to staff and students, without compromising rigorous academic standards, offering a traditional GCSE curriculum as well as wider enrichment activities.

18

COVE SCHOOL
Gender: Girls and boys
Age: 11-16 years

St John's Road, Cove, Farnborough GU14 9RN
coveschool.uk

Overview

Located opposite Cove Junior School on the western side of Farnborough, this secondary school combines academic challenge with a good range of enrichment opportunities beyond the classroom and excellent pastoral care.

19

BOHUNT FARNBOROUGH
Gender: Girls and boys
Age: 11-16 years

Neville Duke Road, Farnborough GU14 9BY
bohuntfarnborough.com

Overview

Part of the Bohunt Education Trust of nine schools, Bohunt Farnborough was recognised as the most improved secondary school in Hampshire and ranked in the top 5% of the most improved schools in the UK.

20

THE WAVELL SCHOOL
Gender: Girls and boys
Age: 11-16 years

Lynchford Road, Aldershot, Farnborough GU14 6BH
wavellschool.org.uk

Overview

As well as setting high academic standards and celebrating excellence, The Wavell School aims to develop intellectual, physical, creative, cultural, emotional and social wellbeing outside the classroom with a range of extracurricular clubs and activities.

21

THE SIXTH FORM COLLEGE FARNBOROUGH
Gender: Girls and boys
Age: 16+ years

Prospect Avenue, Farnborough GU14 8JX
farnborough.ac.uk

Overview

This large and highly regarded college provides sixth form education for children from a range of schools in the local area. It offers a wide range of A-Levels and vocational courses, as well as enrichment, sport and volunteering opportunities for an exciting and vibrant college experience.

22

FARNBOROUGH COLLEGE OF TECHNOLOGY
Gender: Girls and boys
Age: 16+ years

Boundary Road, Farnborough GU14 6SB
farn-ct.ac.uk

Overview

Renowned for work-focused qualifications, dynamic training facilities, and industry-experienced teachers, this college offers a range of courses for both school leavers and adults, which include A-Levels, T-Levels, apprenticeships, BTECs and degrees.

INDEPENDENT SCHOOLS

23

ST NICHOLAS' SCHOOL
Girls, age: 3-16 years
Boys, age: 3-7 years

Redfields Lane, Church Crookham, Fleet GU52 0RF
stnicholas.school

Overview

Set within 30 beautiful acres of Hampshire countryside, St Nicholas' School is a safe and nurturing environment with small class sizes, specialist teaching and fantastic facilities. GCSE results rank amongst the best nationally, with staff developing and stretching pupils' talents and interests.

24

SALESIAN COLLEGE
Boys, age: 11-18 years
Girls, age: 16-18 years

119 Reading Road, Farnborough GU14 6PA
salesiancollege.com

Overview

With outstanding academic achievements and a wide range of sporting and other extracurricular opportunities, Salesian College offers a well-rounded education in a nurturing environment for boys, with girls joining in the sixth form.

25

FARNBOROUGH HILL SCHOOL
Gender: Girls
Age: 11-18 years

312 Farnborough Road, Farnborough GU14 8AT
farnborough-hill.org

Overview

A Catholic girls' school that provides an innovative and excellent education, bespoke to each pupil. Extracurricular opportunities are extensive, ranging from beekeeping to designing and building a green-powered car.

26

LORD WANDSWORTH COLLEGE
Gender: Girls and boys
Age: 11-18 years

Long Sutton, Hook RG29 1TB
lordwandsworth.org

Overview

Set in 1,200 acres of Hampshire countryside, Lord Wandsworth College is a day and boarding school that stretches children academically and nurtures them individually. The grounds include extensive sports pitches and facilities and specialist music and performance venues.

27

BEDALES SCHOOL
Gender: Girls and boys
Age: 3-18 years

Church Road, Steep, Petersfield GU32 2DG
bedales.org.uk

Overview

Established in 1893 as an alternative to the mainstream 19th century British 'Public School', Bedales is a day and boarding school offering a progressive and liberal education. Each student is allocated a personal tutor to oversee their progress through one-to-one and small tutor group meetings.

28

CHURCHER'S COLLEGE
Gender: Girls and boys
Age: 3-18 years

Senior School: Ramshill, Petersfield GU31 4AS
Nursery and Junior School: Midhurst Road, Liphook GU30 7HT
churcherscollege.com

Overview

Founded over 300 years ago, Churcher's College is a day school with senior and junior campus sites set in beautiful grounds with on-site playing fields and superb facilities. Academic expectations are high, as are opportunities for sport, music and other activities.



KENT

Known as the Garden of England, Kent offers charming towns, beautiful countryside and hundreds of miles of stunning coastline and beaches.



KENT OAST HOUSE

KENT

Kent is home to high achieving primary and secondary schools, including some of the country's top grammar schools and leading independent schools.

NURSERIES & PRE-SCHOOLS

- 1 Benenden Pre-school
- 2 Woodpeckers Pre-school
- 3 The Learning Tree Sissinghurst
- 4 Bumble Bees Day Nursery School
- 5 Be. Day Nursery
- 6 Discoveries Montessori Nursery School
- 7 Barnies Day Nursery
- 8 Stocks Green Pre-school
- 9 Stables Daycare
- 10 Scribbles Pre-school
- 11 Little Rascals Nursery
- 12 The Rocking Horse Montessori Kindergarten
- 13 Junior's Day Nursery
- 14 Busy Bees Tunbridge Wells Day Nursery

SECONDARY SCHOOLS

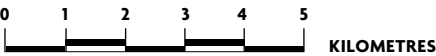
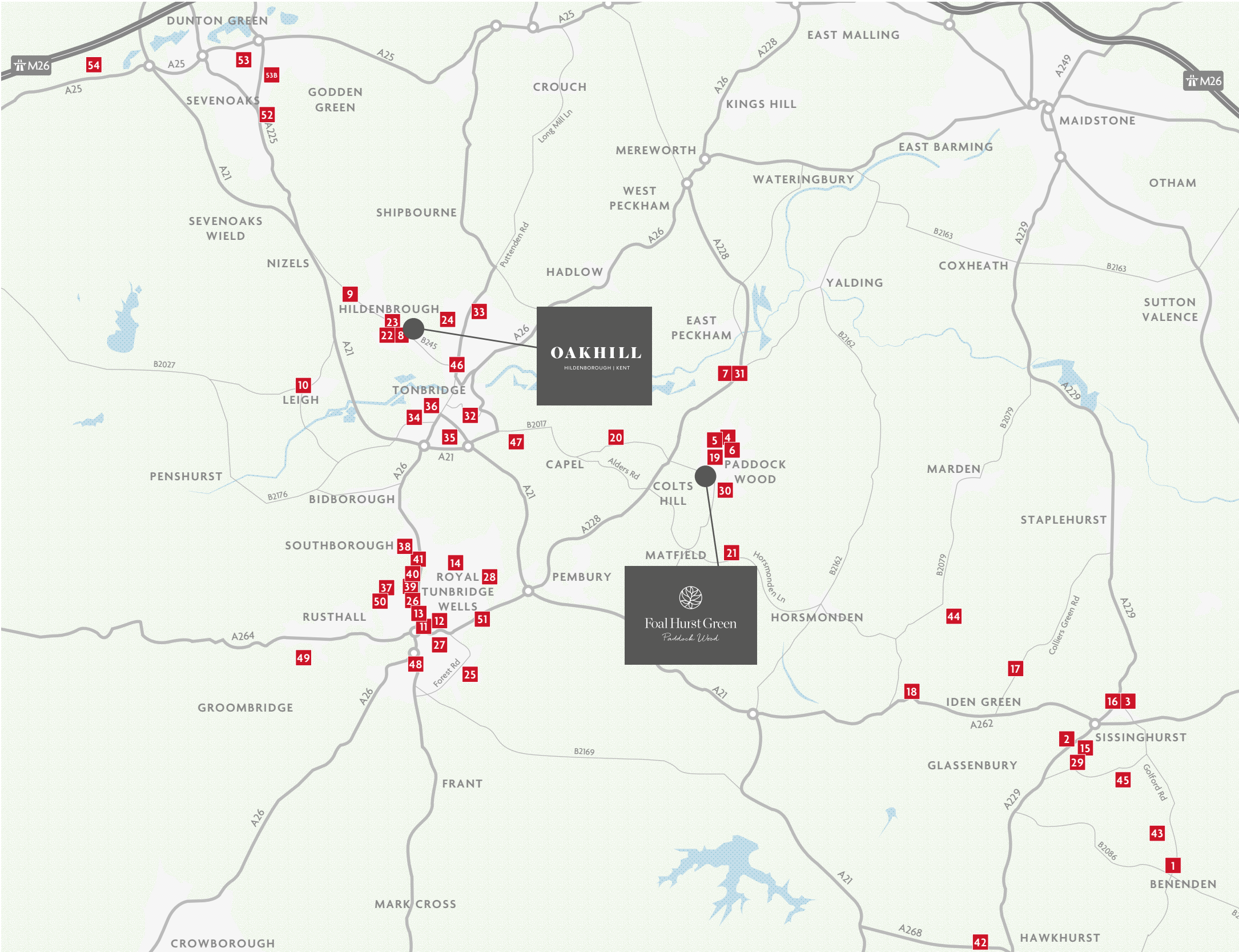
- 29 Cranbrook Grammar School
- 30 Mascalls Academy
- 31 The Quest School
- 32 Hillview School for Girls
- 33 Leigh Academy Hugh Christie
- 34 Leigh Academy Tonbridge
- 35 Tonbridge Grammar School for Girls
- 36 The Judd School
- 37 Bennett Memorial Diocesan School
- 38 St Gregory's Catholic School
- 39 The Skinners' School for Boys
- 40 Tunbridge Wells Girls' Grammar School
- 41 Tunbridge Wells Boys' Grammar School

PRIMARY SCHOOLS

- 15 Cranbrook C of E Primary School
- 16 Sissinghurst C of E Primary School
- 17 Colliers Green C of E Primary School
- 18 Goudhurst & Kildown C of E Primary School
- 19 Leigh Academy Paddock Wood
- 20 Capel Primary School
- 21 Brenchley and Matfield C of E Primary School
- 22 Stocks Green Primary School
- 23 Hildenborough C of E Primary School
- 24 Long Mead Community Primary School
- 25 St Peter's C of E Primary School
- 26 The Wells Free School
- 27 Claremont Primary School
- 28 Temple Grove Academy

INDEPENDENT SCHOOLS

- 42 Marlborough House School
- 43 Benenden Girls' School
- 44 Bethany School
- 45 Dulwich Cranbrook
- 46 Tonbridge School for Boys
- 47 Somerhill Independent School
- 48 The Mead School
- 49 Holmewood House School
- 50 Rose Hill School
- 51 Beechwood School
- 52 Sevenoaks School
- 53 Walthamstow Hall Junior School
- 53B Walthamstow Hall School
- 54 Radnor House School



Map is not to scale and is indicative only.



NURSERIES & PRE-SCHOOLS

1
BENENDEN PRE-SCHOOL
Gender: Girls and boys
Age: 2-4 years

St. George's Hall, The Street, Benenden, Cranbrook TN17 4DB
benendenpreschool.wordpress.com

Overview
A small, friendly early years environment with close links and main feeder for Benenden C of E Primary School. Large secure outside space with ride-on toys, raised flower and vegetable beds, sand pit and slide.

2
WOODPECKERS PRE-SCHOOL
Gender: Girls and boys
Age: 2-5 years

Quaker Lane, Cranbrook TN17 2HF
woodpeckers-preschool.com

Overview
At Woodpeckers, every child is treated as an individual and is offered a personalised care, learning and development plan tailored to meet their needs, interests and fascination.

3
THE LEARNING TREE SISSINGHURST
Gender: Girls and boys
Age 2-5 years

Common Road, Cranbrook TN17 2BH
thelearning-tree.co.uk

Overview
The Learning Tree aims to inspire curiosity, independence and a love of learning to help children to become contributing members of our world and community.

4
BUMBLE BEES DAY NURSERY SCHOOL
Gender: Girls and boys
Age: 3 months-5 years

47 Station Road, Paddock Wood, Tonbridge TN12 6AB
facebook.com/angelabumblebees

Overview
Bumble Bees Day Nursery provides local families with a professional childcare service, within an environment that children find both homely and stimulating in terms of learning potential.

5
BE. DAY NURSERY
Gender: Girls and boys
Age: 2-5 years

St Justus Church Hall, Mount Pleasant, Paddock Wood, Tonbridge TN12 6AH
bedaynurseries.co.uk

Overview
With no more than 30 children in its care at a time, this day nursery offers a warm, familial atmosphere where every child's achievements are celebrated with personal recognition.

6
DISCOVERIES MONTESSORI NURSERY SCHOOL
Gender: Girls and boys
Age: 2-5 years

Paddock Wood Primary School, St Andrews Road, Paddock Wood, Tonbridge TN12 6HT
discoveriesmns.co.uk

Overview
The nursery is in the grounds of Paddock Wood Primary School, with dedicated space and access to the wonderful outdoor area for nature walks and other activities.

7
BARNIES DAY NURSERY
Gender: Girls and boys
Age: 2-5 years

The Hop Farm Country Park, Beltring, Paddock Wood, Tonbridge TN12 6PY
barniesdaynurseries.com

Overview
Situated in the grounds of this historic 400-acre country park, Barnies' ethos evolves around the sense of family with a balance of planned activities, spontaneous play and 'family' times.

8
STOCKS GREEN PRE-SCHOOL
Gender: Girls and boys
Age: 2-5 years

Leigh Road, Hildenborough, Tonbridge TN11 9AE
stocksgreenprimary.co.uk

Overview
Sited on the site of Stocks Green Primary school, the pre-school has access to the school's facilities on a daily basis and share the forest area with them.

9
STABLES DAYCARE
Gender: Girls and boys
Age: 3 months-5 years

The Stables, Mountains, Noble Tree Road, Hildenborough, Tonbridge TN11 8ND
stablesdaycare.co.uk

Overview
Located in 27 acres of historic parkland, Stables Daycare offers care and education with large spaces, playrooms, outdoor play areas and sleep rooms. Older children take part in Forest School activities.

10
SCRIBBLES PRE-SCHOOL
Gender: Girls and boys
Age: 3-5 years

Small Village Hall, High Street, Leigh, Tonbridge TN11 8RL
youngstars-nurseries.co.uk

Overview
Part of Youngstars Nurseries group, this pre-school provides all the children with interesting activities that are appropriate for their age and stage of development.

11
LITTLE RASCALS NURSERY
Gender: Girls and boys
Age: 3 months-3 years

12 Lonsdale Gardens, Tunbridge Wells TN1 1NU
littlerascalsnurseries.co.uk

Overview
The philosophy is that every child deserves a calm, caring, safe and stimulating environment in which to learn. At the age of 3, children move to Little Rascals Pre-prep, which is located just around the corner.

12
THE ROCKING HORSE MONTESSORI KINDERGARTEN
Gender: Girls and boys
Age: 2-4 years

8 Lansdowne Road, Tunbridge Wells TN1 2NJ
therockinghorsenursery.com

Overview
Set in a family home, the nursery is a carefully developed environment which nurtures each child in the transition from home to school life. It practices a mix of Montessori (child-led) and traditional nursery methods.

13
JUNIOR'S DAY NURSERY
Gender: Girls and boys
Age: 3 months-5 years

6 Clanricarde Gardens, Tunbridge Wells TN1 1HP
juniorsdaynursery.co.uk/tunbridge-wells/nursery

Overview
Junior's Day Nursery is conveniently located near to Tunbridge Wells train station, making it an ideal spot for commuting parents.

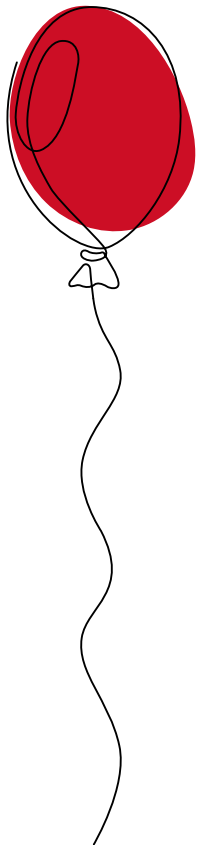
14
BUSY BEES TUNBRIDGE WELLS DAY NURSERY
Gender: Girls and boys
Age: 3 months-5 years

Silverdale Road, Tunbridge Wells TN4 9HU
busybeeschildcare.co.uk

Overview
Busy Bees delivers high quality childcare and exciting opportunities for learning that give every child a head start as they prepare for school.



Nursery and pre-school education is provided on a first-come, first served basis. Parents can choose and apply for several educational institutions as they have no catchment area.



PRIMARY SCHOOLS

15

CRANBROOK C OF E PRIMARY SCHOOL
Gender: Girls and boys
Age: 4-11 years

Carriers Road, Cranbrook TN17 3JZ
cranbrook-cep.kent.sch.uk

Overview
Christian values are at the heart of the school vision and ethos. Children are taught to value themselves and others, aiming to achieve high standards through challenging themselves.

16

SISSINGHURST C OF E PRIMARY SCHOOL
Gender: Girls and boys
Age: 4-11 years

Common Road, Cranbrook TN17 2BH
sissinghurst.kent.sch.uk

Overview
A flourishing C of E school set in the heart of a picturesque Kent village. It is a vibrant community including passionate staff, Friends of Sissinghurst School and an effective Governing Body.

17

COLLIERS GREEN C OF E PRIMARY SCHOOL
Gender: Girls and boys
Age: 4-11 years

Colliers Green, Cranbrook TN17 2LR
colliers-green.kent.sch.uk

Overview
A small, rural school with four classes, located in the beautiful Weald of Kent. The close-knit community is underpinned by the school's nurturing Christian ethos.

18

GOUDHURST & KILNDOWN C OF E PRIMARY SCHOOL
Gender: Girls and boys
Age: 4-11 years

6 Beaman Close, Goudhurst, Cranbrook TN17 1DZ
goudhurst-kilndown.kent.sch.uk

Overview
This small, one-form entry school is a caring, happy place. It is an inclusive school and welcomes children of all abilities, backgrounds and faiths.

19

LEIGH ACADEMY PADDOCK WOOD
Gender: Girls and boys
Age: 4-11 years

Old Kent Road, Paddock Wood, Tonbridge TN12 6JE
leighacademypaddockwood.org.uk

Overview
As an International Baccalaureate World School, Leigh Academy Paddock Wood offers a curriculum framed by the IB Primary Years Programme, which provides a high quality, challenging international education.

20

CAPEL PRIMARY SCHOOL
Gender: Girls and boys
Age: 4-11 years

Five Oak Green, Tonbridge TN12 6RP
capelschool.com

Overview
Capel Primary School provides students with relevant learning journeys that make them active participants in their education, combining curriculum subjects with real-life learning experiences.

21

BRECHLEY AND MATFIELD C OF E PRIMARY SCHOOL
Gender: Girls and boys
Age: 4-11 years

Brenchley Road, Tonbridge TN12 7NY
bmprimary.org.uk

Overview
This small one-form entry school is part of the Tenax Schools Trust and had good facilities and spacious grounds which include a wooded area for Forest School activities.

22

STOCKS GREEN PRIMARY SCHOOL
Gender: Girls and boys
Age: 4-11 years

Leigh Road, Hildenborough, Tonbridge TN11 9AE
stocksgreenprimary.co.uk

Overview
Stocks Green is a popular school situated in attractive grounds in Hildenborough. They value being a part of the friendly village and actively foster community links.

23

HILDENBOROUGH C OF E PRIMARY SCHOOL
Gender: Girls and boys
Age: 4-11 years

Riding Lane, Hildenborough, Tonbridge TN11 9HY
hildenborough.kent.sch.uk

Overview
The school has served the local village community of Hildenborough since 1847, and is supported closely by the Rochester Diocese. The values of love and compassion, courage and endurance underpins all that they do.

24

LONG MEAD COMMUNITY PRIMARY SCHOOL
Gender: Girls and boys
Age: 4-11 years

Waveney Road, Tonbridge TN10 3JU
long-mead.kent.sch.uk

Overview
Long Mead is a well-resourced single-form entry school, set in beautiful grounds that support the delivery of a rich, broad and balanced curriculum.

25

ST PETER'S C OF E PRIMARY SCHOOL
Gender: Girls and boys
Age: 4-11 years

Hawkenbury Road, Tunbridge Wells TN2 5BW
st-peters.kent.sch.uk

Overview
Located at Berkeley's Hollyfields development, the school aims to provide a happy, secure and Christian learning environment in which every child can achieve academic and personal success.

26

THE WELLS FREE SCHOOL
Gender: Girls and boys
Age: 4-11 years

King Charles Square, Tunbridge Wells TN4 8FA
thewellsfreeschool.co.uk

Overview
The school prides itself on enthusiastic and independent children, and on a creative and purposeful approach to learning. They aim to provide meaningful learning opportunities which enrich the curriculum, with strong links to the local community.

27

CLAREMONT PRIMARY SCHOOL
Gender: Girls and boys
Age: 4-11 years

Banner Farm Road, Tunbridge Wells TN2 5EB
claremont.kent.sch.uk

Overview
Claremont Primary is a thriving and popular two-form entry school with a child-centred ethos that achieves excellent outcomes.

28

TEMPLE GROVE ACADEMY
Gender: Girls and boys
Age: 4-11 years

Friars Way, Tunbridge Wells TN2 3UA
templegroveacademy.com

Overview
Temple Grove is a very happy school in which all children feel secure and confident. Children are encouraged to develop positive attitudes towards learning and to achieve high standards in all that they do.



The compulsory subjects taught at primary schools include English, maths, science, design and technology, history, geography, music, PE, art, RE, computing and languages. Many also offer PSHE and citizenship.





SECONDARY SCHOOLS

29
CRANBROOK GRAMMAR SCHOOL
Gender: Girls and boys
Age: 11-18 years

Waterloo Road, Cranbrook TN17 3JD
cranbrookschool.co.uk

Overview
Cranbrook is a very popular and high achieving boarding grammar school in the heart of the Wealden countryside. It was founded in 1518 and given its royal charter by Elizabeth I in 1574.

30
MASCALLS ACADEMY
Gender: Girls and boys
Age: 11-18 years

Maidstone Road, Paddock Wood TN12 6LT
mascallsacademy.org.uk

Overview
Mascalls Academy is a high achieving, multi-disciplinary comprehensive academy with great arts and sports facilities.

31
THE QUEST SCHOOL
Gender: Girls and boys
Age: 5-19 years

The Hop Farm, Maidstone Road,
Paddock Wood TN12 6PY
questschool.co.uk

Overview
The Quest is a specialist school catering for children with Autistic Spectrum Disorders, which uses Applied Behaviour Analysis (ABA) interventions.

32
HILLVIEW SCHOOL FOR GIRLS
Gender: Girls
Age: 11-18 years

Brionne Gardens, Tonbridge TN9 2HE
hillview.kent.sch.uk

Overview
The school has a history of academic excellence and has performing and visual arts specialisms, along with a rich, varied curriculum to foster a love of learning.

33
LEIGH ACADEMY HUGH CHRISTIE
Gender: Girls and boys
Age: 11-18 years

White Cottage Road, Tonbridge TN10 4PU
leighacademyhughchristie.org.uk

Overview
Hugh Christie School serves Tonbridge and most of west Kent. It is a welcoming community with a distinctive ethos and a friendly, focused atmosphere.

34
LEIGH ACADEMY TONBRIDGE
Gender: Girls and boys
Age: 11-18 years

Brook Street, Tonbridge TN9 2PH
leighacademytonbridge.org.uk

Overview
This smaller secondary school provides an inspiring learning environment, where every child is known, cared for and challenged to succeed.

35
TONBRIDGE GRAMMAR SCHOOL FOR GIRLS
Gender: Girls
Age: 11-18 years

Deakin Leas, Tonbridge TN9 2JR
tgs.kent.sch.uk

Overview
The school's curriculum creates an environment where questioning, divergent thinking and freedom to learn from mistakes are encouraged.

36
THE JUDD SCHOOL
Gender: Boys
Age: 11-18 years

Brook Street, Tonbridge TN9 2PN
judd.online

Overview
The school has a long tradition of success, but takes a modern approach to learning, in and out of lessons. The school maxim is 'Learn, Grow, Belong' and this epitomises their approach in all they do.

37
BENNETT MEMORIAL DIOCESAN SCHOOL
Gender: Girls and boys
Age: 11-18 years

Culverden Down, Tunbridge Wells TN4 9SH
bennettmemorial.co.uk

Overview
A Church of England school that sets great store by the development of character and values. Students benefit from a vast range of wider opportunities outside lessons, especially in music and sport.

38
ST GREGORY'S CATHOLIC SCHOOL
Gender: Girls and boys
Age: 11-18 years

Reynolds Lane, Tunbridge Wells TN4 9XL
sgschool.org.uk

Overview
St Gregory's was founded in 1966, with a strong family ethos based on Christian values which helps pupils to succeed, not just academically, but as well-balanced individuals.

39
THE SKINNERS' SCHOOL FOR BOYS
Gender: Boys
Age: 11-18 years

St John's Road, Tunbridge Wells TN4 9PG
skinners-school.co.uk

Overview
The Skinners' School was opened in Tunbridge Wells in 1887 and is committed to being a sustainable school and to collaborating with other schools in the vicinity.

40
TUNBRIDGE WELLS GIRLS' GRAMMAR SCHOOL
Gender: Girls
Age: 11-18 years

Southfield Road, Tunbridge Wells TN4 9UJ
twggs.kent.sch.uk

Overview
A forward-looking school that embraces traditional values. It aims to provide pupils with a full and balanced education for life within a caring environment.

41
TUNBRIDGE WELLS BOYS' GRAMMAR SCHOOL
Gender: Boys
Age: 11-18 years

St John's Road, Tunbridge Wells TN4 9XB
twgsb.org.uk

Overview
The school strives to equip students for a full and constructive place in society, to help them to be adaptive, to exercise critical judgement and to be prepared for the rapidly changing requirements of the 21st century.



Kent is the largest remaining grammar school area in the country, with 32 wholly selective grammar schools. Pupils will find themselves in a working environment that meets their academic needs.



INDEPENDENT SCHOOLS

42
MARLBOROUGH HOUSE SCHOOL
Gender: Girls and boys
Age: 2½-13 years

High Street, Hawkhurst, Cranbrook TN18 4PY
marlboroughhouseschool.co.uk

Overview
Set in lovely grounds, on the border of Kent and East Sussex, Marlborough House is a country prep school with a lovely family feel.

43
BENENDEN GIRLS' SCHOOL
Gender: Girls
Age: 11-18 years

Benenden, Cranbrook TN17 4AA
benenden.school

Overview
Benenden expects each girl to be a responsible and considerate global citizen who is outward looking, courageous and compassionate. With more than 150 different extracurricular activities to choose from, there really is something for every girl at Benenden.

44
BETHANY SCHOOL
Gender: Girls and boys
Age: 11-18 years

Jarvis Lane, Goudhurst, Cranbrook TN17 1LB
bethanyschool.org.uk

Overview
A day and boarding school, where learning and improvement permeates the culture. In order to achieve that, the school celebrates both progress and attainment.

45
DULWICH CRANBROOK
Gender: Girls and boys
Age: 2-16 years

Coursehorn, Cranbrook TN17 3NP
dulwichcranbrook.org

Overview
Nestled in the beautiful Weald of Kent, Dulwich Cranbrook is a day and boarding school that works hard to make hard work feel like fun. It also offers a wide variety of activities in art, music, drama, sport and other interests.

46
TONBRIDGE SCHOOL FOR BOYS
Gender: Boys
Age: 11-18 years

High Street, Tonbridge TN9 1JP
tonbridge-school.co.uk

Overview
The House system at the heart of the school ensures that each pupil, whether a boarder or a day boy, feels fully at home and well supported. The beautiful and historic campus provides space in which to think, breathe and grow.

47
SOMERHILL INDEPENDENT SCHOOL
Gender: Girls and boys
Age: 2-13 years

Somerhill House, Tonbridge TN11 0NJ
somerhill.org

Overview
Somerhill offers a unique structure with co-educational and single-sex schooling in one setting. Housed in a Jacobean mansion with 150 acres of parkland, it has all the space and facilities to nurture pupils.

48
THE MEAD SCHOOL
Gender: Girls and boys
Age: 3-11 years

16 Frant Road, Tunbridge Wells TN2 5SN
meadschool.co.uk

Overview
The Mead School is a purposeful, happy and high achieving nursery and prep school. With a great educational ethos, children develop the skills and attitude they need to a confidently approach the next stage of their education.

49
HOLMEWOOD HOUSE SCHOOL
Gender: Girls and boys
Age: 3-13 years

Holmewood House, Barrow Lane, Langton Green, Tunbridge Wells TN3 0EB
holmewoodhouse.co.uk

Overview
Holmewood House prep school is set in 30 acres of grounds just outside Tunbridge Wells. It is very much a family school where the positive relationships between the teachers and pupils allow them to get to know and understand the individual needs of each child.

There are more than 350 private schools in the South East, including day and boarding schools, boys' schools, girls' schools, prep schools, senior schools and sixth forms.

50
ROSE HILL SCHOOL
Gender: Girls and boys
Age: 3-13 years

Coniston Avenue, Tunbridge Wells TN4 9SY
rosehillschool.co.uk

Overview
Rose Hill School is a warm, caring school with inspirational teachers, an enriching curriculum, first-class facilities and creative indoor and outdoor learning spaces.

51
BEECHWOOD SACRED HEART SCHOOL
Gender: Girls and boys
Age: 3-18 years

12 Pembury Road, Tunbridge Wells TN2 3QD
beechwood.org.uk

Overview
Beechwood School is set in 23 acres of parkland and is a day and boarding school, comprising a nursery, prep school and senior school, with boarding for children aged 11 and over.

52
SEVENOAKS SCHOOL
Gender: Girls and boys
Age: 11-18 years

High Street, Sevenoaks TN13 1HU
sevenoaksschool.org

Overview
Global in its outlook yet rooted in the local community, Sevenoaks School takes an innovative approach to education, achieving academic excellence, strong pastoral care and a wide extracurricular programme.

53
WALTHAMSTOW HALL SCHOOL
Gender: Girls
Age: 4-18 years

Junior School: Bradbourne Park Road, Sevenoaks TN13 3LD

Senior School: Holly Bush Lane, Sevenoaks TN13 3UL
walthamstow-hall.co.uk

Overview
Walthamstow Hall educates girls with academic potential to lead confident, challenging and fulfilling lives in the 21st century.

54
RADNOR HOUSE SCHOOL
Gender: Girls and boys
Age: 2-18 years

Combe Bank Drive, Sevenoaks TN14 6AE
radnor-sevenoaks.org

Overview
Set within 27 acres of stunning scenery, this small, nurturing school takes pride in truly understanding each pupil as an individual. Its excellent facilities provide numerous opportunities for sports and outdoor education.



SURREY

An exclusive lifestyle beckons from Surrey, with its mix of cosmopolitan towns, picturesque villages and lush countryside.



PEASLAKE, SURREY HILLS

SURREY

Surrey is known for its excellent schools, including some of the country's leading independent schools that offer a specialist or international education.



NURSERIES & PRE-SCHOOLS

- 1 Acorn Nursery School
- 2 Christopher Robin Day Nursery
- 3 Little Hearts Pre-school
- 4 The Knowle Nursery School
- 5 Rainbows End Pre-school

PRIMARY SCHOOLS

- 6 Cranleigh C of E Primary School
- 7 St Cuthbert Mayne R C Primary School
- 8 Park Mead Primary School
- 9 Ewhurst C of E Infant School

SECONDARY SCHOOLS

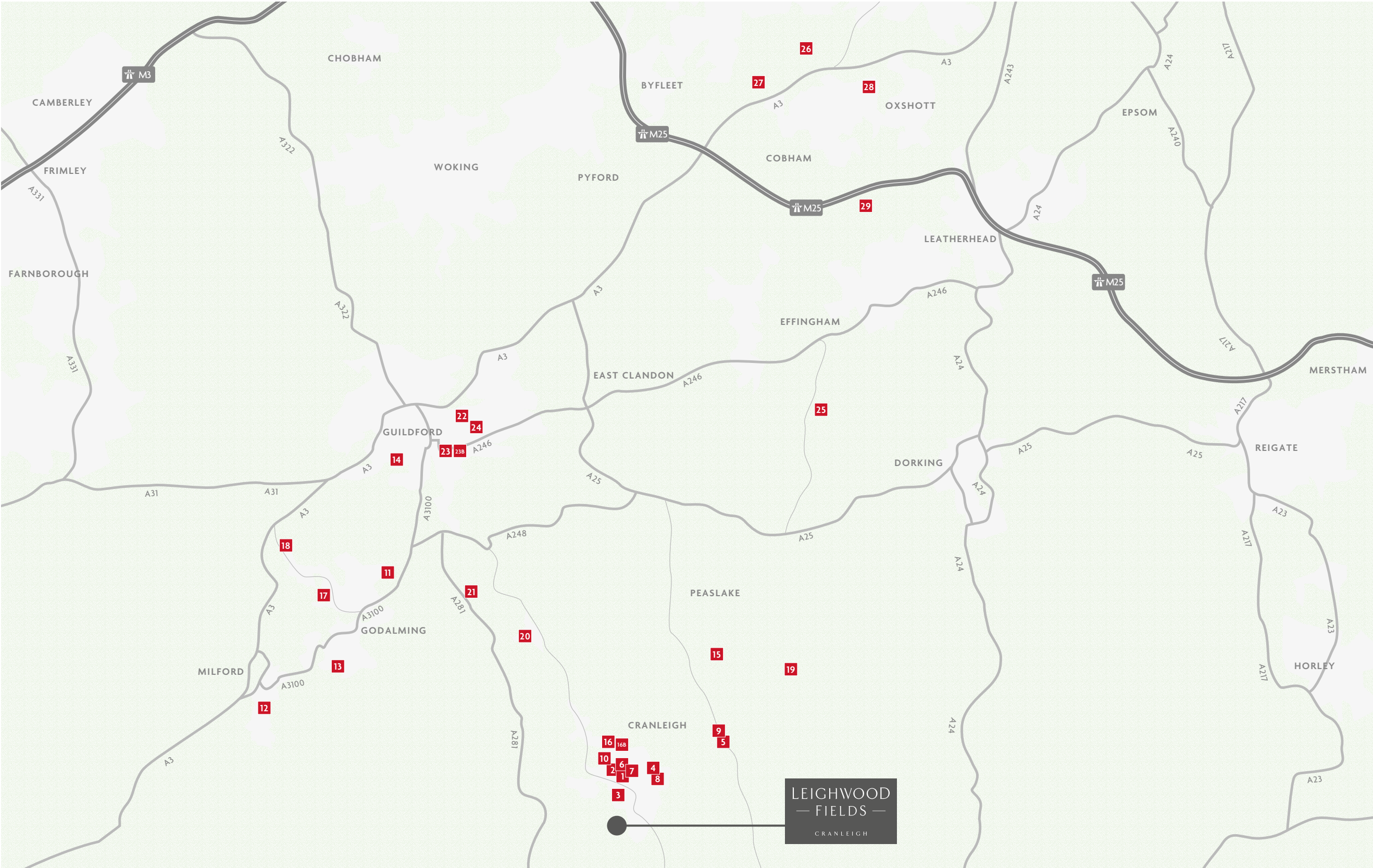
- 10 Glebelands School
- 11 Broadwater School
- 12 Rodborough School
- 13 Godalming College
- 14 Guildford County School

INDEPENDENT SCHOOLS

- 15 Duke of Kent School
- 16 Cranleigh School
- 16B Cranleigh Prep School
- 17 Charterhouse
- 18 Prior's Field
- 19 Hurtwood House School
- 20 Longacre School
- 21 St Catherine's School
- 22 Guildford High School
- 23 Royal Grammar School
- 23B Royal Grammar Prep School
- 24 Tormead School
- 25 St Teresa's Effingham School
- 26 ACS Cobham International School
- 27 Notre Dame School
- 28 Reed's School
- 29 Yehudi Menuhin School



Map is not to scale and is indicative only.



NURSERIES & PRE-SCHOOLS

1

ACORN NURSERY SCHOOL
Gender: Girls and boys
Age: 2-5 years

Church Lane, Cranleigh GU6 8AR
theacornnurseryschool.co.uk

Overview
Located just a short distance from Cranleigh High Street, this nursery school offers Forest School sessions, toddler yoga and mindfulness, and a French club.

2

CHRISTOPHER ROBIN DAY NURSERY
Gender: Girls and boys
Age: 3 months-5 years

Parsonage Road, Cranleigh GU6 7AN
daynurseriesurrey.co.uk

Overview
This Montessori nursery enjoys a quiet location just off Cranleigh High Street. The purpose-made building is vibrant and homely and the garden, which has been carefully adapted to meet the needs of developing children, provides an exciting outdoor world to discover.

3

LITTLE HEARTS PRE-SCHOOL
Gender: Girls and boys
Age: 2-5 years

Snnoxhall Pavilion, Knowle Lane, Cranleigh GU6 8BL
littleheartssurrey.com

Overview
Inclusion is at the heart of this pre-school, aligning with the Steiner philosophy that every child deserves a nurturing environment as they embark on this exciting educational journey.

4

THE KNOWLE NURSERY SCHOOL
Gender: Girls and boys
Age: 2-4 years

Park Drive, Cranleigh GU6 7HB
knowlenurserieschool.co.uk

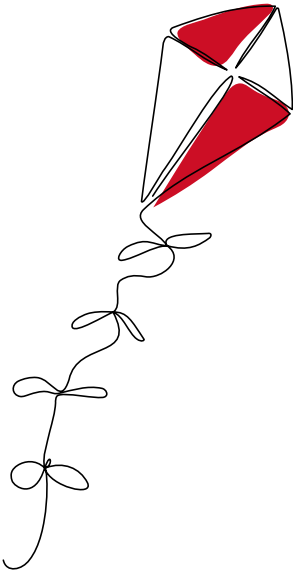
Overview
Located in modern self-contained premises within the grounds of Park Mead Primary School, this semi-structured family run nursery provides a high quality caring and educational environment.

5

RAINBOWS END PRE-SCHOOL
Gender: Girls and boys
Age: 2-4 years

Village Hall, The Street, Ewhurst, Cranleigh GU6 7PX
rainbowsendpre-school.org.uk

Overview
This pre-school offers a stimulating and varied environment, with a secure Forest School garden. It has strong links with the local community and makes regular visits to The Old Rectory Care Home, Ewhurst School, St Peter & St Paul's Church and Cranleigh Library.



Early education is highly recommended for children from overseas for whom English is not their first language. Attending a nursery or pre-school will help them to assimilate faster, integrate into the local community and prepare for primary school.

PRIMARY SCHOOLS

6

CRANLEIGH C OF E PRIMARY SCHOOL
Gender: Girls and boys
Age: 4-11 years

Parsonage Road, Cranleigh GU6 7AN
cranleighprimary.surrey.sch.uk

Overview
This vibrant and forward-looking primary school provides an active, exciting and creative curriculum which seeks to stimulate, engage and challenge children whilst developing a lifelong love of learning.

7

ST CUTHBERT MAYNE R C PRIMARY SCHOOL
Gender: Girls and boys
Age: 4-11 years

St Nicolas Avenue, Cranleigh GU6 7AQ
stcuthbertmayne.co.uk

Overview
A Catholic primary school, St Cuthbert Mayne recognises each child's individuality and is committed to developing their talents. The school aims to ensure that pupils are well prepared for their next stage through an excellent primary education.

8

PARK MEAD PRIMARY SCHOOL
Gender: Girls and boys
Age: 4-11 years

Park Drive, Cranleigh GU6 7HB
park-mead.surrey.sch.uk

Overview
This two-form entry primary school provides a caring, purposeful and vibrant learning environment, and aims for all children to be happy, confident risk-takers who fulfil their potential.

9

EWHURST C OF E INFANT SCHOOL
Gender: Girls and boys
Age: 4-7 years

The Street, Ewhurst, Cranleigh GU6 7PX
ewhurst.surrey.sch.uk

Overview
This nurturing, one-form entry infant school has been part of the local community for over 170 years. Pupils flourish here, not just academically, but also socially, culturally, mentally and spiritually.



SECONDARY SCHOOLS

10
GLEBELANDS SCHOOL
Gender: Girls and boys
Age: 11-16 years

3 Parsonage Road, Cranleigh GU6 7AN
glebelands.surrey.sch.uk

Overview
Situating in the heart of Cranleigh, Glebelands enjoys expansive grounds and a range of sports facilities. It is a vibrant, friendly and dynamic school with high expectations and ambitions for every student.

11
BROADWATER SCHOOL
Gender: Girls and boys
Age: 11-16 years

Summers Road, Godalming GU7 3BW
broadwater.surrey.sch.uk

Overview
This top rated school achieves excellent results and has high aspirations for all its pupils. Its Aspire & Challenge Group works with high attaining pupils to further stretch them to achieve their full potential.

12
RODBOROUGH SCHOOL
Gender: Girls and boys
Age: 11-16 years

Petworth Road, Milford, Godalming GU8 5BZ
rodborough.surrey.sch.uk

Overview
Rodborough has a history of academic excellence and aims to provide an education that broadens and enriches pupils' experience and develops their personal qualities and interests.

13
GODALMING COLLEGE
Gender: Girls and boys
Age: 16+ years

Tuesley Lane, Godalming GU7 1RS
godalming.ac.uk

Overview
A specialist sixth form college with an outstanding reputation. It offers a wide range of courses, both academic and vocational, so students can develop an individualised study programme to suit their needs, abilities and interests.

14
GUILDFORD COUNTY SCHOOL
Gender: Girls and boys
Age: 11-18 years

Farnham Road, Guildford GU2 4LU
guildfordcounty.co.uk

Overview
This high achieving and oversubscribed secondary school and sixth form is located just at the edge of Guildford town centre. Its strong reputation for academic success is developed within a caring atmosphere that supports family values.

INDEPENDENT SCHOOLS

15
DUKE OF KENT SCHOOL
Gender: Girls and boys
Age: 3-16 years

Peaslake Read, Ewhurst GU6 7NS
dukeofkentschool.org.uk

Overview
This day and boarding school enjoys a beautiful setting in the Surrey Hills with excellent sport, music and performing arts facilities.

16
CRANLEIGH SCHOOL AND CRANLEIGH PREP SCHOOL
Gender: Girls and boys
Age: 7-18 years

Horseshoe Lane, Cranleigh GU6 8QQ
cranleigh.org
cranprep.org

Overview
Surrey's leading co-educational day and boarding school, Cranleigh provides a breathtaking range of opportunities in a school small enough for everyone to know and support each other.

17
CHARTERHOUSE
Gender: Girls and boys
Age: 13-18 years

Hurtmore Road, Godalming GU7 2DX
charterhouse.org.uk

Overview
Founded in 1611, Charterhouse is now one of the UK's top independent day and boarding schools, set in an inspiring 250-acre campus with extensive facilities.

18
PRIOR'S FIELD
Gender: Girls
Age: 11-18 years

Priorsfield Road, Godalming GU7 2RH
priorsfieldschool.com

Overview
Welcoming girls of all abilities, Prior's Field provides a superb, all-round education in a caring environment that recognises and celebrates each pupil's individuality.

19
HURTWOOD HOUSE SCHOOL
Gender: Girls and boys
Age: 15-18 years

1 Radnor Lane, Holmbury St Mary, Dorking RH5 6NU
hurtwoodhouse.com

Overview
This sixth-form only boarding school specialises in creative arts, but also has a strong academic record, ranking in the top 100 for A-Level results.

20
LONGACRE SCHOOL
Gender: Girls and boys
Age: 2-11 years

Hullbrook Lane, Shamley Green, Guildford GU5 0NQ
longacre.surrey.sch.uk

Overview
Longacre aims to ensure that children are ready for the next adventure, providing a holistic education both in the classroom and outside. Many children go on to Surrey's leading independent schools.

21
ST CATHERINE'S SCHOOL
Gender: Girls
Age: 3-18 years

Station Road, Bramley, Guildford GU5 0DF
stcatherines.info

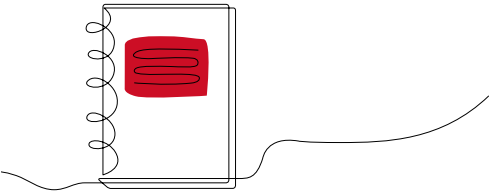
Overview
Excellent teaching tailored to girls, first rate facilities and a caring pastoral team combine to make St Catherine's a vibrant and highly successful school for both day girls and boarders.

22
GUILDFORD HIGH SCHOOL
Gender: Girls
Age: 4-18 years

London Road, Guildford GU1 1SJ
guildfordhigh.co.uk

Overview
A high performing day school for girls that regularly ranks in the top 10 in the country for both A-Level and GCSE results.

The prestigious learning environments of independent schools empower young people with the understanding, courage and skills to be successful, happy, healthy and resilient individuals in an ever-changing world.



23
ROYAL GRAMMAR SCHOOL
Gender: Boys
Age: 3-18 years

Prep School: Maori Road, Guildford GU1 2EL
Senior School: High Street, Guildford GU1 3BB
rgsg.co.uk

Overview
Inspiring teachers, excellent facilities and a broad outlook result in a strong academic performance and pupils equipped with the skills they need to succeed in the future.

24
TORMEAD SCHOOL
Gender: Girls
Age: 4-18 years

Cranley Road, Guildford GU1 2JD
tormeadschool.org.uk

Overview
A day school in Guildford, Tormead delivers impressive academic results alongside outstanding pastoral care for confident and caring girls.

25
ST TERESA'S EFFINGHAM SCHOOL
Gender: Girls
Age: 2-18 years

Beech Avenue, Effingham, Dorking RH5 6ST
st-teresas.com

Overview
This day and boarding school offers a rich and varied curriculum aiming for academic excellence in a strong community where each girl is known and nurtured. Extracurricular activities include its tennis academy and equestrian team.

26
ACS COBHAM INTERNATIONAL SCHOOL
Gender: Girls and boys
Age: 2-18 years

Portsmouth Road, Hersham, Cobham KT11 1BL
acs-schools.com/cobham

Overview
A leading international day and boarding school with world-class teaching and facilities in a 128-acre campus. Its tailored approach and breadth of opportunities means pupils can follow their individual interests and ambitions for their future.

27
NOTRE DAME SCHOOL
Gender: Girls
Age: 2-18 years

Burwood House, Convent Lane, Cobham KT11 1HA
notredame.co.uk

Overview
Set in 26 acres of beautiful countryside, this school is unashamedly holistic. Their students are front and centre of their purpose, with happiness and success abundant in equal measures. Their mission is to accompany young people as they build their skills for today and tomorrow.

28
REED'S SCHOOL
Boys, age: 11-18 years
Girls, age: 16-18 years

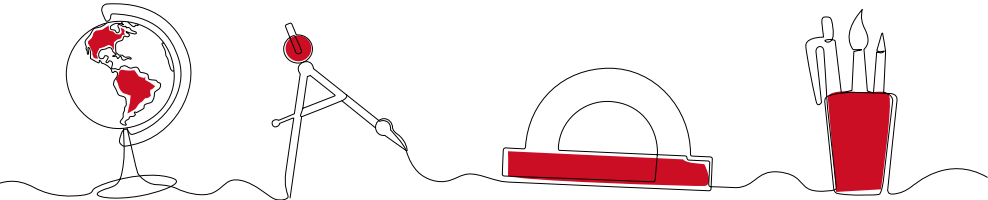
Sandy Lane, Cobham KT11 2ES
reeds.surrey.sch.uk

Overview
A day and boarding school with spectacular facilities, strong community spirit and good academic results.

29
YEHUDI MENUHIN SCHOOL
Gender: Girls and boys
Age: 10-19 years

Cobham Road, Stoke D'Abernon, Cobham KT11 3QQ
menuhinschool.co.uk

Overview
Founded in 1963 by celebrated violinist Yehudi Menuhin, this specialist music school offers a stimulating academic environment in which musically gifted children, of all nationalities and backgrounds, can hone their talents.



SUSSEX

From tranquil vineyards to coastal buzz, and rural landscapes to a rich cultural scene, Sussex has so much to offer.



BRIGHTON PIER

SUSSEX

Sussex offers a wide variety of educational institutions, from close-knit village primary schools to the magnificent campuses and grounds of historic independent schools.



NURSERIES & PRE-SCHOOLS

- 1 Horsham Nursery School
- 2 Little Monkeys Day Nursery and Pre-school
- 3 Perfect Start Day Nursery
- 4 St Mary's Pre-school
- 5 Little Barn Owls Nursery and Farm School

PRIMARY SCHOOLS

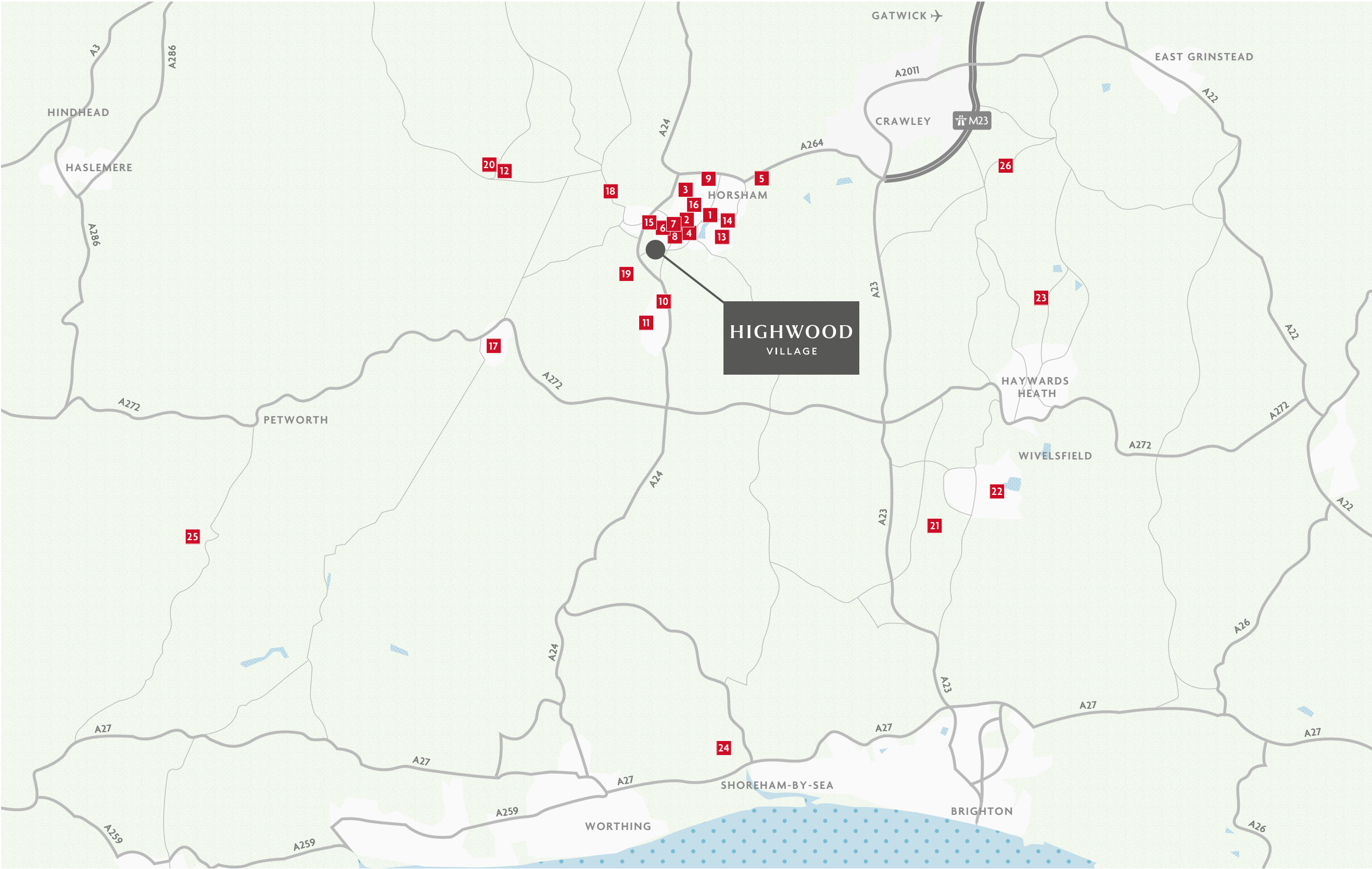
- 6 Arunside Primary School
- 7 St John's Catholic Primary School
- 8 St Mary's C of E Primary School
- 9 Holbrook Primary School
- 10 Castlewood Primary School
- 11 Southwater Infant and Junior Academy
- 12 Rudgwick Primary School

SECONDARY SCHOOLS

- 13 The Forest School
- 14 Millais Girls' School
- 15 Tanbridge House School
- 16 Collyer's
- 17 The Weald School

INDEPENDENT SCHOOLS

- 18 Farlington School
- 19 Christ's Hospital
- 20 Pennthorpe School
- 21 Hurst
- 22 Burgess Hill Girls
- 23 Ardingly College
- 24 Lancing College
- 25 Seaford College
- 26 Worth School



0 1 2 3 4 5
KILOMETRES

Map is not to scale and is indicative only.

NURSERIES & PRE-SCHOOLS

1
HORSHAM NURSERY SCHOOL
Gender: Girls and boys
Age: 1-5 years

Harwood Road, Horsham RH13 5UT
horshamnursery.co.uk

Overview
Children are given the freedom and time to learn through play and quality interactions with staff, in an exciting, well-resourced environment at this day nursery.

2
LITTLE MONKEYS DAY NURSERY AND PRE-SCHOOL
Gender: Girls and boys
Age: 3 months-5 years

18 London Road, Horsham RH12 1AY
grandiruk.com

Overview
This bright and spacious nursery offers high quality Early Years care complemented by nutritious food, engaging activities and outings that support every child's development.

3
PERFECT START DAY NURSERY
Gender: Girls and boys
Age: 0-5 years

41 Pondtail Road, Horsham RH12 5HP
perfectstartnurseries.co.uk

Overview
A purpose-built nursery with two spacious garden areas, providing nurturing care and an engaging mix of activities including music, cooking and art.

4
ST MARY'S PRE-SCHOOL
Gender: Girls and boys
Age: 3 months-5 years

20 Denne Road, Horsham RH12 1JF
stmaryspreschoolhorsham.co.uk

Overview
A fun, stimulating, safe and spacious environment for children within walking distance of Horsham station.

5
LITTLE BARN OWLS NURSERY AND FARM SCHOOL
Gender: Girls and boys
Age: 3 months-5 years

Woodlands, Old Crawley Road, Faygate,
Horsham RH12 4RU
littlebarnowls.co.uk

Overview
Part of an award-winning group of local forest and farm school nurseries, Little Barn Owls enjoys a beautiful setting and provides an approach to education that helps children develop their thinking and express themselves creatively.

PRIMARY SCHOOLS

6
ARUNSIDE PRIMARY SCHOOL
Gender: Girls and boys
Age: 4-11 years

Blackbridge Lane, Horsham RH12 1RR
arunside.school

Overview
Located close to the centre of Horsham, Arunside School also benefits from extensive grounds. It aims to give children a broad and balanced education, both academically and socially.

7
ST JOHN'S CATHOLIC PRIMARY SCHOOL
Gender: Girls and boys
Age: 4-11 years

Blackbridge Lane, Horsham RH12 1RR
stjohnshorsham.school

Overview
Underpinned by the Catholic life of the school, St John's aims to ensure every child thrives, feels safe, has fun and enjoys success.

8
ST MARY'S C OF E PRIMARY SCHOOL
Gender: Girls and boys
Age: 4-11 years

Normandy, Horsham RH12 1JL
stmarysschoolhorsham.co.uk

Overview
A forward-thinking Church of England primary school which aims to make every member of the community feel valued in learning and growing together.

9
HOLBROOK PRIMARY SCHOOL
Gender: Girls and boys
Age: 4-11 years

Holbrook School Lane, Horsham RH12 5PP
holbrookschool.co.uk

Overview
Holbrook School has high aspirations for every child and enjoys wonderful outside space including a conservation area, extensive playgrounds and fields, and a thinking garden.

10
CASTLEWOOD PRIMARY SCHOOL
Gender: Girls and boys
Age: 4-11 years

Castlewood Road, Southwater, Horsham RH13 9US
castlewood.w-sussex.sch.uk

Overview
Sets high standards in teaching and learning, and provides children with a rich and exciting curriculum that enables all pupils to achieve and enjoy their time at primary school.

The Early Years Foundation Stage (EYFS) at nurseries and pre-schools sets standards for the learning, development and care of children from birth to five years old, mostly taught through games and play.

11
SOUTHWATER INFANT AND JUNIOR ACADEMY
Gender: Girls and boys
Age: 4-11 years

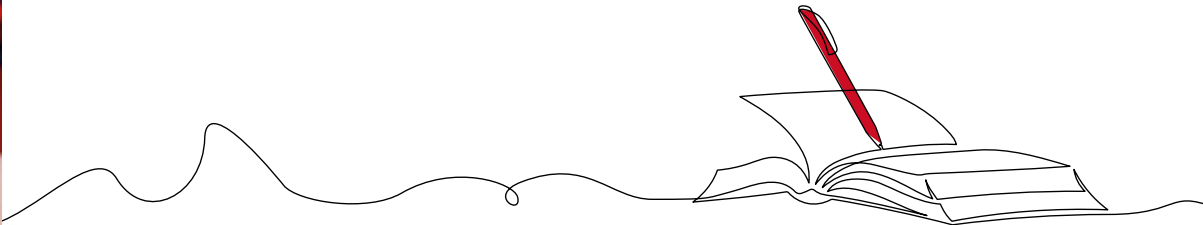
Worthing Road, Southwater, Horsham RH13 9JH
southwaterinfantacademy.co.uk

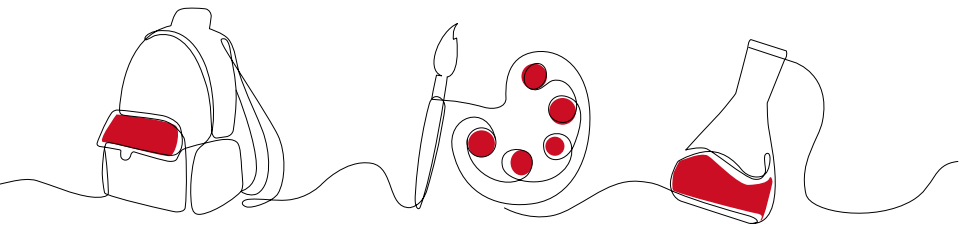
Overview
Sharing a site but split into Infants and Juniors, these well-regarded schools have high expectations of both behaviour and academic standards.

12
RUDGWICK PRIMARY SCHOOL
Gender: Girls and boys
Age: 4-11 years

Tates Way, Rudgwick, Horsham RH12 3HW
rudgwick.w-sussex.sch.uk

Overview
This small one-form entry school provides a happy, fun, safe place where excellent teaching and a wide range of experiences inspire a love of learning.





SECONDARY SCHOOLS

13

THE FOREST SCHOOL
Gender: Girls and boys
Age: 11-16 years

Comptons Lane, Horsham RH13 5NT
theforestschool.com

Overview
Set in a 20-acre campus and offering over 30 extracurricular activities, The Forest School helps pupils develop into confident and successful global citizens.

14

MILLAIS GIRLS' SCHOOL
Gender: Girls
Age: 11-16 years

Depot Road, Horsham RH13 5HR
millais.org.uk

Overview
Millais enjoys a well-established reputation for academic success, the result of excellent and imaginative lessons that combine academic rigour with creative techniques and modern technology.

15

TANBRIDGE HOUSE SCHOOL
Gender: Girls and boys
Age: 11-16 years

Farthings Hill, Guildford Road, Horsham RH12 1SR
tanbridge-house-sch.co.uk

Overview
A high achieving school that values a kind and caring community based upon mutual respect and a strong understanding of individual and collective responsibilities.

16

COLLYER'S
Gender: Girls and boys
Age: 16+ years

Hurst Road, Horsham RH12 2EJ
collyers.ac.uk/adult-education_skills

Overview
Founded in 1532, Collyer's is one of the leading sixth form colleges in the country and offers a broad range of subjects in a supportive and inspiring environment.

17

THE WEALD SCHOOL
Gender: Girls and boys
Age: 11-18 years

Station Road, Billingshurst RH14 9RY
theweald.org.uk

Overview
A warm and friendly school whose ethos is that everyone is valued and has a vital role to play to make it an excellent place to learn, grow and thrive.

All children in England* are entitled to a free place at a state secondary school or academy up to the age of sixteen.

INDEPENDENT SCHOOLS

18

FARLINGTON SCHOOL
Gender: Girls and boys
Age: 6 months-18 years

Strood Park, Strood Green, Horsham RH12 3PN
farlingtonschool.com

Overview
A day and boarding school that consistently achieves excellent results at GCSE and A-Level. It is a caring and cohesive community that nurtures children through their entire education.

19

CHRIST'S HOSPITAL
Gender: Girls and boys
Age: 11-18 years

The Avenue, Christ's Hospital, Horsham RH13 0LJ
christs-hospital.org.uk

Overview
An award-winning day and boarding school that provides a transformative education for young people from all backgrounds. Its holistic education centres on developing talent and fulfilment in a wide range of broader activities.

20

PENNTHORPE SCHOOL
Gender: Girls and boys
Age: 2-13 years

Church Street, Rudgwick, Horsham RH12 3HJ
pennthorpe.com

Overview
Focused on nurturing and inspiring children, Pennthorpe is dedicated to every pupil's confidence and success, whatever their strengths or interests.

21

HURST
Gender: Girls and boys
Age: 4-18 years

College Lane, Hurstpierpoint, Hassocks BN6 9JS
hpsc.co.uk

Overview
Set in 140 acres with superb facilities, Hurst is a day and boarding school that focuses on getting the very best out of every child. Alongside academic rigour, it offers an ambitious range of sporting, cultural, intellectual and social programmes.

22

BURGESS HILL GIRLS
Gender: Girls and boys
Age: 4-18 years

Keymer Road, Burgess Hill RH15 0EG
burgesshillgirls.com

Overview
With a fantastic history of success, Burgess Hill Girls provides pupils with the skills and opportunities to achieve their dreams through an educational experience that is second to none.

23

ARDINGLY COLLEGE
Gender: Girls and boys
Age: 2-18 years

College Road, Ardingly, Haywards Heath RH17 6SQ
ardingly.com

Overview
A vibrant, diverse and inclusive community, Ardingly College is a day and boarding school with a global perspective. Its 240-acre campus is home to superb facilities, providing a huge range of enrichment activities.

24

LANCING COLLEGE
Gender: Girls and boys
Age: 13-18 years

Lancing BN15 0RW
lancingcollege.co.uk

Overview
Set in spectacular countryside, Lancing College offers a personalised and inspiring education to pupils from all over the world. Its family of schools include two prep schools, one in Hove and one in Worthing, and a nursery in Lancing.

25

SEAFORD COLLEGE
Gender: Girls and boys
Age: 5-18 years

Lavington Park, Petworth GU28 0NB
seaford.org

Overview
With day and boarding options and encompassing prep, senior and sixth form education, Seaford College is a wonderful place to grow up, with beautiful grounds, world-class facilities and warm, friendly environment.

26

WORTH SCHOOL
Gender: Girls and boys
Age: 11-18 years

Paddockhurst Road, Turners Hill, Crawley RH10 4SD
worthschool.org.uk

Overview
Set in 500 acres of beautiful countryside, Worth brings together an uplifting spiritual and traditional education with the latest facilities, a contemporary range of extracurricular activities and outstanding teaching.

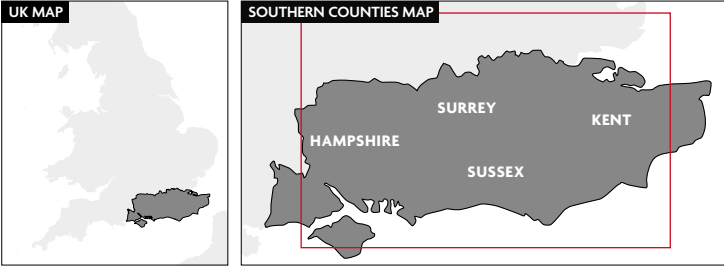


*Only applies to people with residency status

UNIVERSITIES

The Southern Counties offer a wealth of opportunities for further study, with several leading universities based in major towns and cities. The region's excellent transport links also enable students to access London's world-renowned universities and exciting social scene.

UNIVERSITIES



HAMPSHIRE

- 1 University of Southampton
- 2 University of Portsmouth

KENT

- 3 University of Kent

SURREY

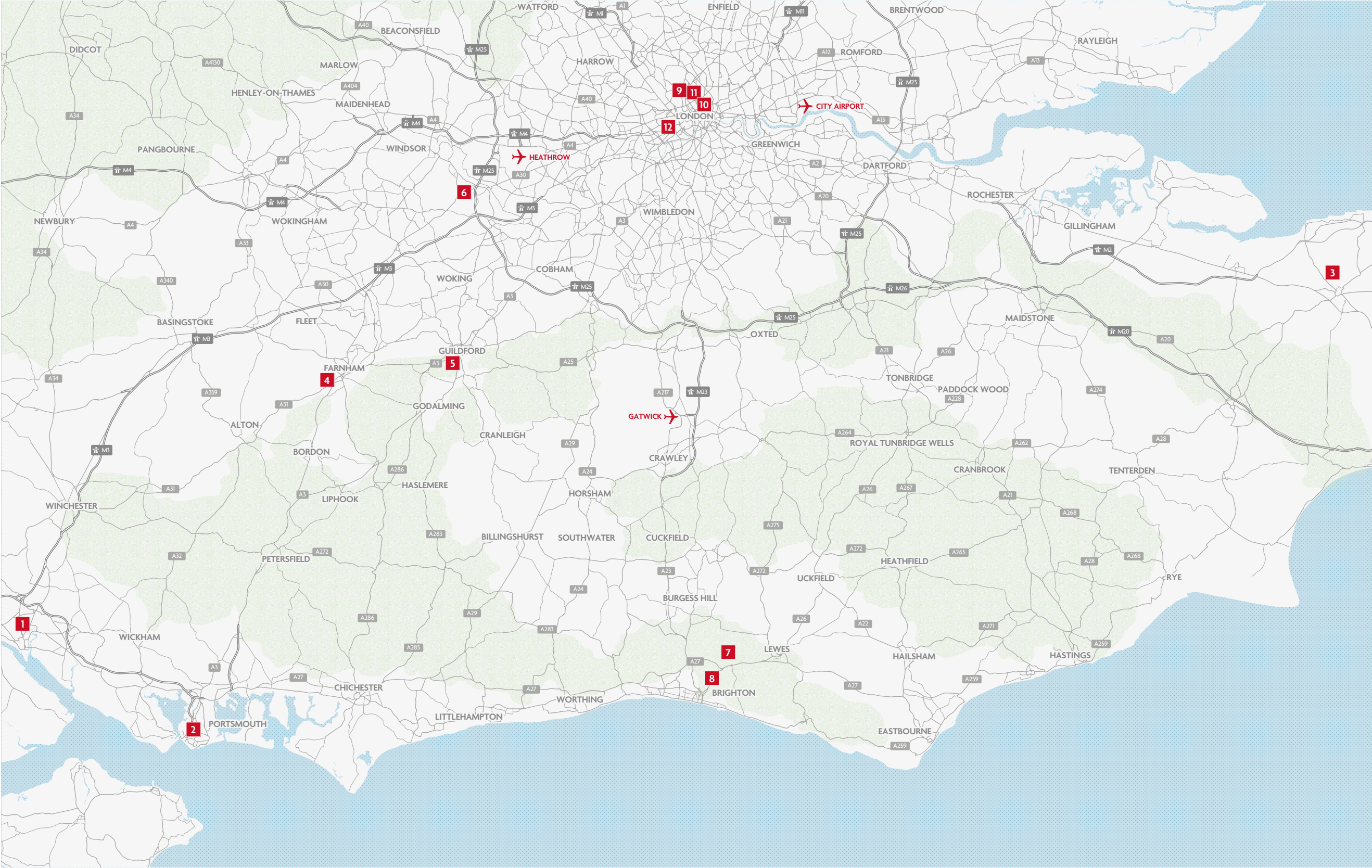
- 4 University of Creative Arts Farnham
- 5 University of Surrey
- 6 Royal Holloway University of London

SUSSEX

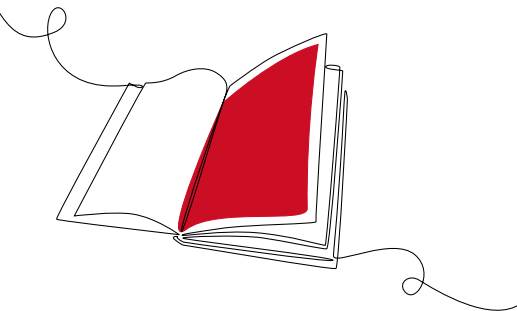
- 7 University of Sussex
- 8 University of Brighton

LONDON

- 9 University College London
- 10 King's College London
- 11 The London School of Economics and Political Science
- 12 Imperial College London



Map is not to scale and is indicative only.



▲ ROYAL HOLLOWAY UNIVERSITY OF LONDON

HAMPSHIRE

1

UNIVERSITY OF SOUTHAMPTON
University Road, Southampton SO17 1BJ
southampton.ac.uk

Overview
Ranked 14th in the UK by the Times Higher Education, this research-intensive institution and founding member of the Russell Group of 24 leading UK universities offers a wide range of undergraduate and postgraduate courses. It has six campuses in Southampton, one in Winchester and one in Malaysia, with extensive facilities, sports clubs and a thriving student community.

2

UNIVERSITY OF PORTSMOUTH
Winston Churchill Avenue, Southsea, Portsmouth PO1 2UP
port.ac.uk

Overview
Portsmouth is a modern, multi-disciplinary university offering practical courses at undergraduate, postgraduate and research levels. Most bachelor's degrees include a one-year paid work placement, and the university is rated highly for student satisfaction and graduate employment.

KENT

3

UNIVERSITY OF KENT
Giles Lane, Canterbury CT2 7NZ
kent.ac.uk

Overview
The University of Kent is ranked in the top 40 in The Times Good University Guide 2025, offering outstanding teaching, world-leading research and a superb student experience. It has exceptional campuses in Canterbury and Medway and postgraduate centres in the historic cities of Brussels and Paris.

SURREY

4

UNIVERSITY OF CREATIVE ARTS FARNHAM
Falkner Road, Farnham GU9 7D
uca.ac.uk

Overview
This specialist art and design university is the home of acclaimed degree courses in animation, film, interior design and crafts. Located on the edge of the town centre, UCA Farnham is packed with all the specialist facilities students need to make incredible products, from ceramics and metalwork to films and animations.

5

UNIVERSITY OF SURREY
Stag Hill, Guildford GU2 7XH
surrey.ac.uk

Overview
With a beautiful and vibrant campus in Guildford, the University of Surrey provides exceptional teaching and practical learning to inspire and empower students for personal and professional success. It ranked 21st in The Times and The Sunday Times Good University Guide 2025 and 3rd in the south of the UK for highly skilled employment in Graduate Outcomes 2024 HESA.

6

ROYAL HOLLOWAY UNIVERSITY OF LONDON
Egham Hill, Egham TW20 0EX
royalholloway.ac.uk

Overview
Situating in 135 acres of parkland and named as one of the most beautiful campuses in the world, Royal Holloway is a leading university, ranked 5th in the South East by The Complete University Guide 2025. It is dedicated to inclusive education and impactful research, empowering its global community of students, colleagues and partners to make a real difference in the world.

SUSSEX

7

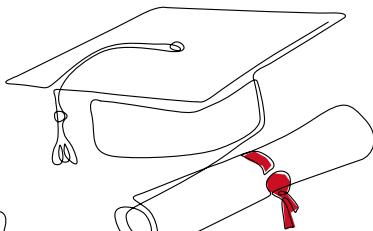
UNIVERSITY OF SUSSEX
Falmer, Brighton BN1 9RH
sussex.ac.uk

Overview
The University of Sussex is a research-intensive campus university near the vibrant city of Brighton. It ranked 38th in the UK in The Times and Sunday Times Good University Guide 2025 and offers over 500 undergraduate and postgraduate courses and degrees. From scientific discovery to global policy, from student welfare to career development, Sussex innovates and takes a lead.

8

UNIVERSITY OF BRIGHTON
Lewes Road, Brighton BN2 4AT
brighton.ac.uk

Overview
The University of Brighton has around 18,000 students and 2,400 staff studying and working at four campuses in Brighton and Eastbourne. Subjects taught here range from medicine to engineering, psychology to illustration, and sport science to English literature.



LONDON

9

UNIVERSITY COLLEGE LONDON
Gower Street, London WC1E 6BT
ucl.ac.uk

Overview
Founded in 1826 in the heart of London, UCL is the capital's leading multidisciplinary university, with more than 16,000 staff and 50,000 students from over 150 different countries. It is ranked number 2 in the UK for research power (Research Excellence Framework 2021), in the top 10 globally (QS World University Rankings 2025) and was The Times and Sunday Times University of the Year 2024.

10

KING'S COLLEGE LONDON
Strand, London WC2R 2LS
kcl.ac.uk

Overview
Established in 1829, King's College is one of the world's leading research and teaching universities, ranked 36th globally in the QS World University Rankings 2025. Undergraduate courses cover arts, humanities and social sciences; world issues; business, finance and law; science, technology and mathematics; engineering; health sciences; and health practice.

11

THE LONDON SCHOOL OF ECONOMICS AND POLITICAL SCIENCE
Houghton Street, London WC2A 2AE
lse.ac.uk

Overview
LSE is a world-leading social science specialist university, awarded The Times and Sunday Times University of the Year 2025 and ranked 50th globally in the QS World University Rankings 2025. It offers over 40 undergraduate programmes across the social sciences and over 160 programmes for further graduate study.

12

IMPERIAL COLLEGE LONDON
Exhibition Road, South Kensington SW7 2AZ
imperial.ac.uk

Overview
Ranked 2nd globally in the QS World University Rankings 2025, Imperial College London is a world-class university with a mission to benefit society through excellence in science, technology, engineering, medicine and business. It has nine campuses with superb facilities across London and the South East.



University presents the opportunity to delve deeper into a subject that students enjoy, creating the perfect foundation for a career that interests them.

THE BERKELEY DIFFERENCE

Designed for life

At Berkeley, we are committed to creating great places where people love to live, work and relax. Where the homes are light filled, adaptable and finished to very high standards. Where carefully planned public areas enhance wellbeing and quality of life for residents and visitors. Where people feel a sense of community.

Exceptional customer service

As a first-class business we place the highest priority on customer service and will help and support you throughout the buying process and beyond. Our levels of customer service exceed that of other premium brands, recently receiving a Gold Award by In-house Research.

High specification

Individually designed kitchens with high quality appliances and a carefully selected range of luxury choices and finishes allow you to personalise your home. Quality comes as standard in all our homes.

Placemaking

We are renowned for our commitment to quality and it starts with choosing desirable locations, be that the city, village or countryside. Each development is different. We partner with world-leading architects to devise a wide choice of individually designed homes, and with interiors specialists to create beautiful rooms using quality materials.

▼ LEIGHWOOD FIELDS



▲ HIGHWOOD VILLAGE



▲ HARTLAND VILLAGE

► HARESHILL





CONTACT US

SCAN QR CODE FOR MORE
INFORMATION ABOUT BERKELEY



