

LIFE IN THE SOUTHERN COUNTIES

Your guide to Hampshire, Kent,
Surrey and Sussex



VIEW ACROSS A RAPE FIELD OVER THE HAMPSHIRE COUNTRYSIDE FROM PORTSDOWN HILL, PORTSMOUTH

CONTENTS

WELCOME TO THE SOUTHERN COUNTIES	2
HAMPSHIRE LIFE	4
A brief history of Hampshire	6
Hampshire overview	8
Glorious countryside	10
Coastal exploring	12
City living	14
Characterful places	16
KENT LIFE	18
A brief history of Kent	20
Kent overview	22
Spectacular scenery	24
Britain's oldest county	26
Rich local area	28
Coastal charms	30
SURREY LIFE	32
A brief history of Surrey	34
Surrey overview	36
The magical Surrey Hills	38
Heritage	40
Refined country living	42
SUSSEX LIFE	44
A brief history of Sussex	46
Sussex overview	48
The coast	50
Towns and villages	52
Heritage	54
Rural countryside	56
EXCELLENT CONNECTIONS	58
MAJOR EMPLOYERS IN THE SOUTHERN COUNTIES	60
EDUCATION IN THE SOUTHERN COUNTIES	62
WHAT OUR CUSTOMERS ARE SAYING	64
WHY WE ARE DEVELOPING IN THE SOUTHERN COUNTIES	66
THE BERKELEY DIFFERENCE	68

WELCOME TO THE SOUTHERN COUNTIES . . .



The Southern Counties of Hampshire, Kent, Surrey and Sussex offer a superb quality of life in quintessentially English landscapes. Add to this their good transport links and it's easy to see why they are so desirable as both a place to live and an investment.

Berkeley is proud to offer a range of exceptional homes in some of the finest locations across the Southern Counties, giving you the opportunity to buy and invest in these sought-after places.

. . . DISCOVER
LIFE BEYOND
LONDON



HAMPSHIRE LIFE

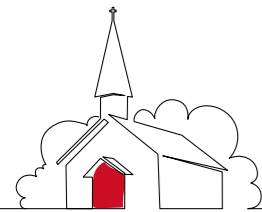
Hampshire is the perfect blend of city, coast and countryside, blessed with the natural beauty of two National Parks and the rich culture of its historic settlements.

THE SOUTH DOWNS

A BRIEF HISTORY OF HAMPSHIRE

The birthplace of cricket and the home of England's ancient capital city Winchester, Hampshire has history and heritage at its heart. While always an agricultural county (Hampshire is famous for its watercress and is one of the largest producers in Europe) its coastline has led to a rich navel tradition too. World-famous fashion brand Burberry was founded here, now synonymous with classic British outdoor style.

HAMPSHIRE OVERVIEW



A WEALTH OF HISTORY

The old Capital of England, Winchester is home to one of the largest cathedrals in Europe and the medieval Great Hall, which dates back to the 13th century.



▲ WINCHESTER



THRIVING ECONOMY

The strong economy and low unemployment rate improve the quality of living in this region.



▲ GUNWHARF QUAYS, PORTSMOUTH



AWARD-WINNING ATTRACTIONS

Explore leading attractions such as Jane Austen’s House, The Mary Rose, Sir Harold Hillier Gardens, or Highclere Castle, where popular TV series Downton Abbey was filmed.



▲ HIGHCLERE CASTLE



EXCELLENT EDUCATION

The University of Southampton is ranked in the top 14 in the country, and the number one university in the South.



▲ SOUTHAMPTON UNIVERSITY



FROM COUNTRY TO COAST

Hampshire offers a fantastic lifestyle with the country, coast and city all in easy reach, giving you a wide choice of things to do and pace of life.



▲ SOUTHAMPTON



A PLACE FOR NATURE TO THRIVE

Home to the New Forest and the South Downs, Hampshire provides plenty of opportunities to connect with the landscape and nature.



▲ NEW FOREST PONIES

GLORIOUS COUNTRYSIDE

Approximately 75% of Hampshire is classified as rural, with natural landscapes stretching from the South Downs National Park in the east to the New Forest National Park in the west and the North Wessex Downs in the north.

The South Downs National Park is an exceptional area of wild beauty to explore, with historic walking trails, rolling hills and a diversity of wildlife habitats.

The New Forest National Park is one of the largest remaining stretches of unspoilt woodland, heathland and river valleys in Southern England with over 3,000 protected ponies which roam free.

Country parks throughout the county such as Lepe, Queen Elizabeth and River Hamble offer days out full of adventure and stunning scenery.

Enjoy tranquil strolls and boating along the **Basingstoke canal**, while the **River Test** is famous for its superb trout fishing.

Buckler's Hard is a charming hamlet of Georgian cottages on the banks of the Beaulieu River on the Beaulieu estate.



▲ THE SOUTH DOWNS NATIONAL PARK

▼ BASINGSTOKE CANAL



▲ THE NEW FOREST NATIONAL PARK



COASTAL EXPLORING

▼ LEPE BEACH



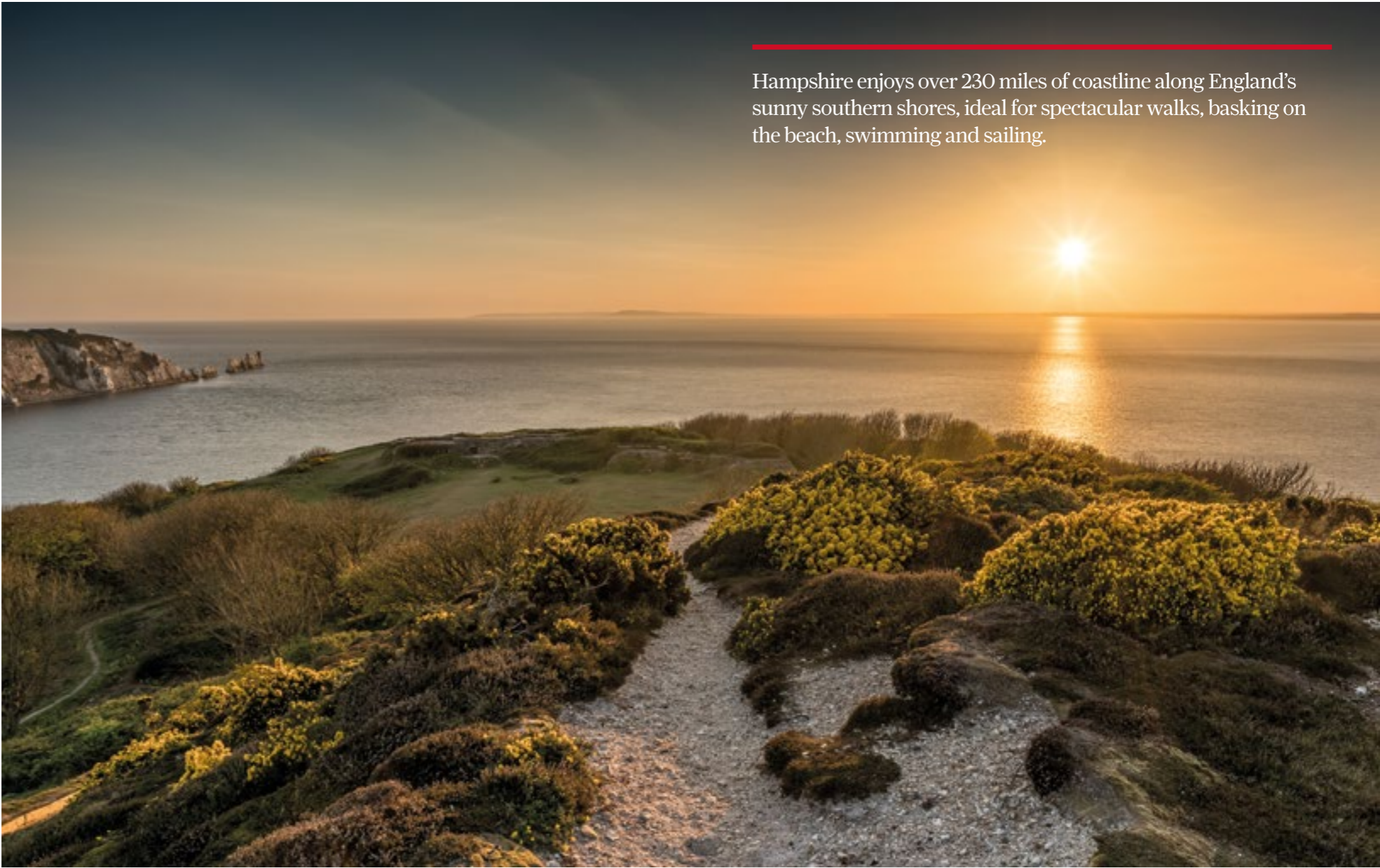
The Isle of Wight is just four miles off the Hampshire coast and England's largest island. Easily reached by ferry, it has attractive beaches and coastline and is home to Queen Victoria's beloved Osborne House.

Lepe Beach is a long shingle beach popular with kite and wind surfers. It is part of Lepe Country Park, and in an Area of Outstanding Natural Beauty.

Southsea is a seaside resort with seafront gardens, a long beach, pier, and Southsea Castle.

Calshot beach is home to one of the UK's biggest outdoor and water sports centres.

Ocean Village, located on Southampton Water, is a busy and lively 450-berth marina, surrounded by outstanding recreational facilities.



Hampshire enjoys over 230 miles of coastline along England's sunny southern shores, ideal for spectacular walks, basking on the beach, swimming and sailing.

▲ ISLE OF WIGHT
► KEYHAVEN



CITY LIVING

With its mix of sophisticated and cosmopolitan cities and destinations, Hampshire offers a wealth of theatre, music, art and sport.

▼ SOUTHAMPTON



Portsmouth is a thriving port city known for its maritime heritage and historic dockyard. The sail-inspired Spinnaker Tower offers views across the harbour and exciting dining experiences.

Gunwharf Quays designer shopping outlet features over 100 stores and restaurants and includes top designers such as Armani, Tommy Hilfiger and Paul Smith.

Bars, clubs & restaurants are plentiful in Portsmouth, Southampton and Southsea, from Gin & Olive in Southsea for cocktails and sharing boards to The Liquorist with Gunwharf Quays' largest outdoor seating area.

Southampton is home to West Quay, the premier shopping and leisure destination on the south coast, conveniently located just a few minutes' walk from Southampton Central train station. **Southampton's Cultural Quarter** boasts a £30m arts centre for galleries, theatre, music and open air events.

▼ WEST QUAY, SOUTHAMPTON



▲ GUNWHARF QUAYS, PORTSMOUTH

◀ MONKS WINE BAR, PORTSMOUTH





From centuries-old hills and rivers to historic cities, discover the hidden gems of this fascinating county.

Winchester is England's ancient capital and former seat of King Alfred the Great. Well-known for its 11th century cathedral and Great Hall, home for over 700 years to the mysterious King Arthur's Round Table, Winchester is also popular for its bustling shopping streets, floral summer season and quirky open air events.

Lyndhurst, known as the capital of The New Forest since William the Conqueror established it as a royal hunting ground in 1079, is full of charm. Hop on board the **Watercress Line** steam train which used to transport locally grown watercress to markets in London.

Romsey is an ancient and prosperous market town that sits on the banks of the River Test.

Jane Austen's House in Chawton is a literary landmark, where the author lived and wrote her novels, including *Pride and Prejudice*.

◀ WINCHESTER CATHEDRAL

▼ THE AYLESFORD AND WATERCRESS LINE



► JANE AUSTEN'S HOUSE



CHARACTERFUL PLACES





KENT LIFE

With stunning countryside enclosed by hundreds of miles of coastline, Kent has so much variety to choose from, complemented by its thriving towns and pretty villages.

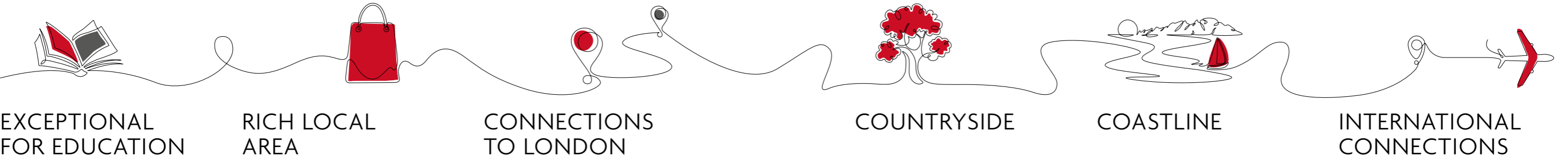
A BRIEF HISTORY OF KENT

Kent has a rich and colourful history, which dates back thousands of years. Many people have raced to these shores and have quite rightly fallen in love with the green fields and glorious beaches, including the Romans and the Vikings.

Kent was given the title ‘The Garden of England’ by Henry VIII around 400 years ago. Allegedly, the Monarch tried a bowl of Kentish cherries and was so delighted by the flavour of the fruits that the title became associated with the county. The iconic Kent oast houses which dot the landscape are historically where hops were dried, ready for the brewing process.



KENT OVERVIEW



Kent has 32 grammar schools and is home to Kent University, a top 40 university in the UK with 20,000+ students*.



▲ GRAMMAR SCHOOL

Kent is home to one of only three ‘Royal’ Towns in the UK, as well as numerous picturesque villages and historic houses and castles.



▲ ROYAL TUNBRIDGE WELLS

Excellent transport connections into London with many journeys in under 40 minutes**.



▲ TRAIN TO LONDON

Kent is home to glorious countryside, including the High Weald National Landscape and Kent Downs.



▲ FARMSTEAD BERKELEY DEVELOPMENT

The Kent’s coastline boasts six blue flag beaches and 12 Seaside Award winners, all in one of the warmest parts of the UK.



▲ DEAL SEAFRONT

Gatwick Airport is conveniently located for much of Kent, with flights to hundreds of destinations. Kent also hosts Le Shuttle Channel Tunnel, with travel to France in 35 minutes***.



▲ GATWICK AIRPORT

*The Times and Sunday Times Good University Guide 2025
**Travel times taken from nationalrail.co.uk
***Travel times taken from leshuttle.com

SPECTACULAR SCENERY



From its majestic white chalk cliffs to the two Areas of Outstanding Natural Beauty, Kent offers some of Britain's most varied and beautiful landscapes, just a short distance from London.

The White Cliffs of Dover overlook the English Channel, providing sweeping views across the sea to France. These striking chalk cliffs played a pivotal role in Britain's defence during the Second World War.

The North Downs are a ridge of chalk hills which make up one of Kent's Areas of Natural Beauty, stretching from Surrey to the White Cliffs of Dover.

High Weald is a Medieval landscape of rolling hills, historic woodlands and picturesque villages, just waiting to be explored.

The award-winning **Chapel Down Winery** is England's leading wine producer, open to the public for tours and tastings all year round.

Rolling hills create stunning vistas, while wildlife and nature reserves, including the remarkable Oare Marshes, are wonderful places to visit.

▲ WHITE CLIFFS OF DOVER



▲ VIEWS OVER HIGH WEALD
◀ OARE MARSHES

BRITAIN'S OLDEST COUNTY

Filled with castles, cathedrals and over 1,700 listed buildings, Kent has a rich heritage that stretches back to before the Roman invasion.

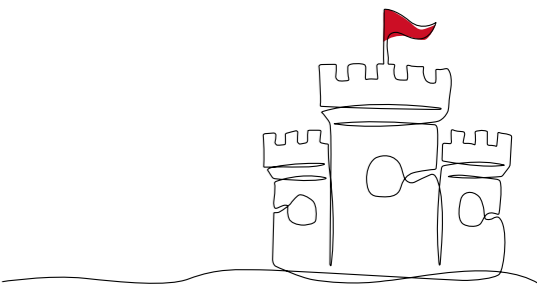
Founded in 597, **Canterbury Cathedral** has been a place of pilgrimage for over 1,400 years. Now the seat of the Church of England, its awe-inspiring architecture and history make it a must-see.

King Henry VIII transformed the Norman **Leeds Castle** into a pleasure palace for himself and his first wife, Catherine of Aragon.

Described as the 'Key to England,' **Dover Castle** stands in the iconic white cliffs, overlooking the Channel. The main castle was built soon after 1066, but the site also includes a Roman lighthouse.

Historically used for drying hops as part of the brewing process, **oast houses** are scattered throughout the county, with the oldest one located at Golford, Cranbrook, dating back to the 17th century.

Ightham Mote is a 14th-century manor house with an impressive moat and gardens, which provides a perfect example of what life would have looked like in the Middle Ages.



▼ LEEDS CASTLE



▼ KENT OAST HOUSES



▼ CANTERBURY CITY



▲ CANTERBURY CATHEDRAL

A RICH LOCAL AREA

Discover a vibrant cultural life in Kent's bustling towns and historic cities.

The leafy commuter town of **Sevenoaks** is a favourite among Kent residents and tourists alike, with a picturesque town centre and world-renowned schools.

As well as being steeped in history, **Canterbury** is a bustling, modern city, with shops, restaurants, and a respected university.

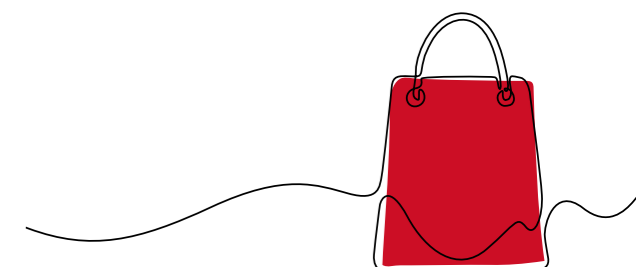
The idyllic riverside village of **Aylesford** is accessed by a Medieval bridge, and is home to an ancient priory dating back to the 13th century.

Royal Tunbridge Wells is a charming town with beautiful architecture such as The Pantiles, a Georgian colonnade filled with shops, galleries, cafés and restaurants. Its natural spring waters, discovered in the 17th century, drew many to the town, including Queen Anne.

▼ AYLESFORD



▲ THE PANTILES, ROYAL TUNBRIDGE WELLS
◀ CANTERBURY CITY



COASTAL CHARMS

From vibrant seaside resorts to vast stretches of golden sand, Kent's 350 miles of coastline has plenty to explore.

The seaside town of **Margate** is enjoying a surge in popularity, with new bars, restaurants and galleries popping up to enhance its timeless charm.

Whitstable is famous for its oysters, as well as its colourful beach huts, independent shops and sandy shoreline.

Picture a British seaside town, and you'll be thinking of somewhere like **Broadstairs**. Its sandy beaches, clifftop walks and plentiful eateries make for a perfect day out.

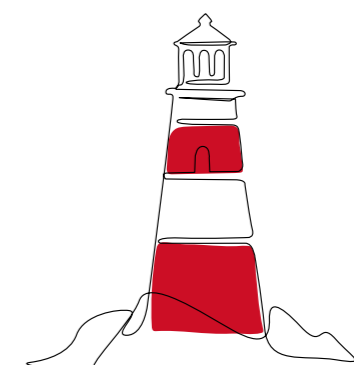
As well as endless beaches – including **Dungeness Beach**, Britain's only desert – the Kentish coast is filled with peaceful bays and nature reserves.

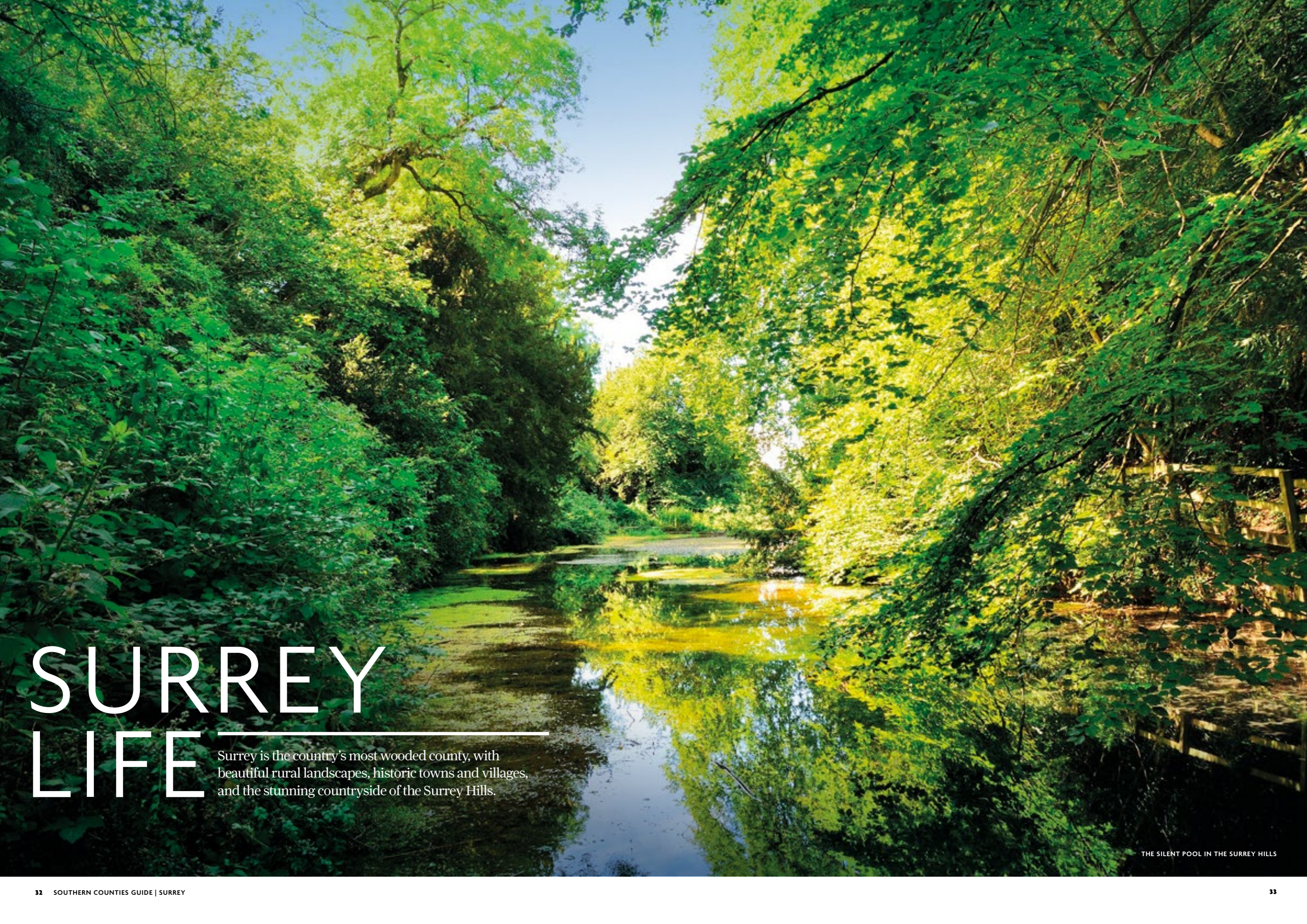
▼ STONE BAY



▲ BOTANY BAY

◀ WHITSTABLE





SURREY LIFE

Surrey is the country's most wooded county, with beautiful rural landscapes, historic towns and villages, and the stunning countryside of the Surrey Hills.

THE SILENT POOL IN THE SURREY HILLS

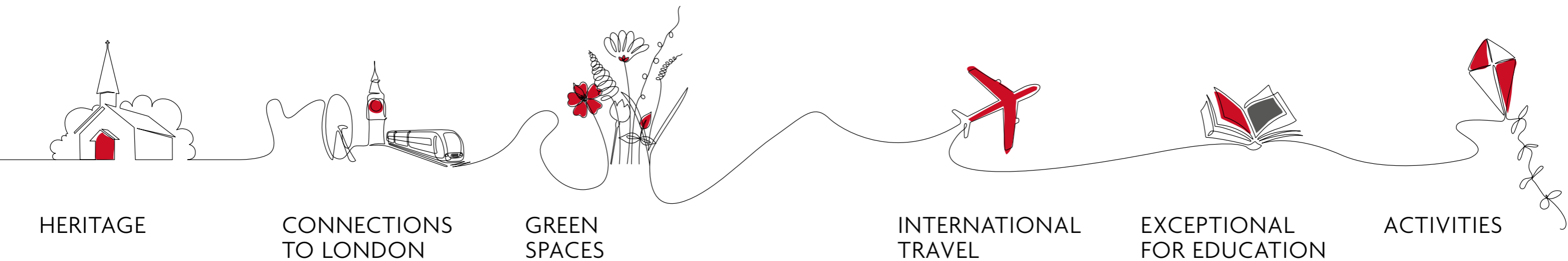
A BRIEF HISTORY OF SURREY



Surrey has a rich heritage that spans thousands of years. Originally an area attached to the Kingdom of the Middle Saxons (Middlesex), the name Surrey itself derives from 'the southern region'. The Saxons came to Surrey in the 5th and 6th centuries and the names of their tribes live on in modern place names such as Woking and Godalming, while the Norman conquest led to the building of significant castles at Guildford and Farnham.

Surrey is also the site of one of the most significant events in history: in a quiet meadow in Runnymede in 1215, King John reluctantly sealed the Magna Carta.

SURREY OVERVIEW



HERITAGE

Surrey features many beautiful historic sites such as the 16th century Hampton Court Palace and Guildford Castle, built by William the Conqueror.



▲ HAMPTON COURT PALACE

CONNECTIONS TO LONDON

Being under an hour away from London, Surrey has efficient transport links to the city as well as buses around to the local area and nearby schools for easy accessibility.



▲ BIG BEN

GREEN SPACES

Surrey is known for its protected green spaces including Claremont Gardens and Polesden Lacey, as well as beauty spots such as Box Hill and Leith Hill.



▲ BOX HILL STEPPING STONES

INTERNATIONAL TRAVEL

Heathrow airport is located just off the M25, within easy reach of much of Surrey, with flights all over the world.



▲ HEATHROW AIRPORT

EXCEPTIONAL FOR EDUCATION

With a wide choice of highly regarded schools, Surrey provides students with an incredible education from primary up to university level.



▲ ROYAL HOLLOWAY, EGHAM

ACTIVITIES

Surrey is a great place to visit for those who love the outdoors, with captivating country walks in the Surrey Hills, cycling trails, and water sports on its lakes and rivers.



▲ HORSESHOEING ON BOX HILL



THE MAGICAL SURREY HILLS

Shere is a small village with an abundance of historic buildings set in glorious countryside, famed for being the location of films including *The Holiday*, *Beauty and the Beast*, and *Bridget Jones's Diary*.

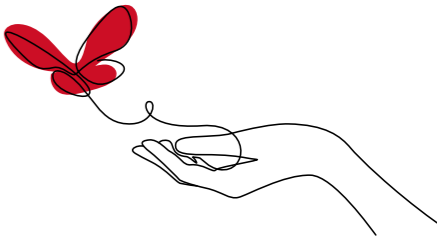
Picturesque Mickleham is on the east side of the River Mole valley by the foot of Box Hill, and just 1.3 miles from Denbies Wine Estate, the largest vineyard in England.

Peaslake is nestled at the base of Holmbury and Pitch Hill, perfect for hiking or exploring some of Surrey's best cycling routes.

Chiddingfold village is a favourite among tourists, with plenty of quaint cottages and beautiful timber-framed Wealden houses.

Ripley is a charming and historic village close to the beautiful River Wey.

With glorious views, woodland and charming villages, this Area of Outstanding Natural Beauty is your backdrop to an idyllic lifestyle.



◀ PITCH HILL
▼ PEASLAKE VILLAGE



▲ THE RIVER WEY

HERITAGE

Historic houses, royal palaces, significant sites – Surrey has an abundance of fascinating heritage destinations.

▼ POLESDEN LACEY



Award-winning **Painshill Park** is an 18th century landscape garden, inspired by Renaissance landscape paintings.

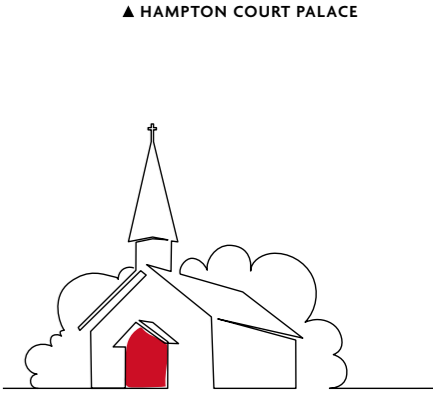
Hatchlands Park covers 170 hectares containing sweeping parkland, woodlands and meadows sheltering a Georgian country house.

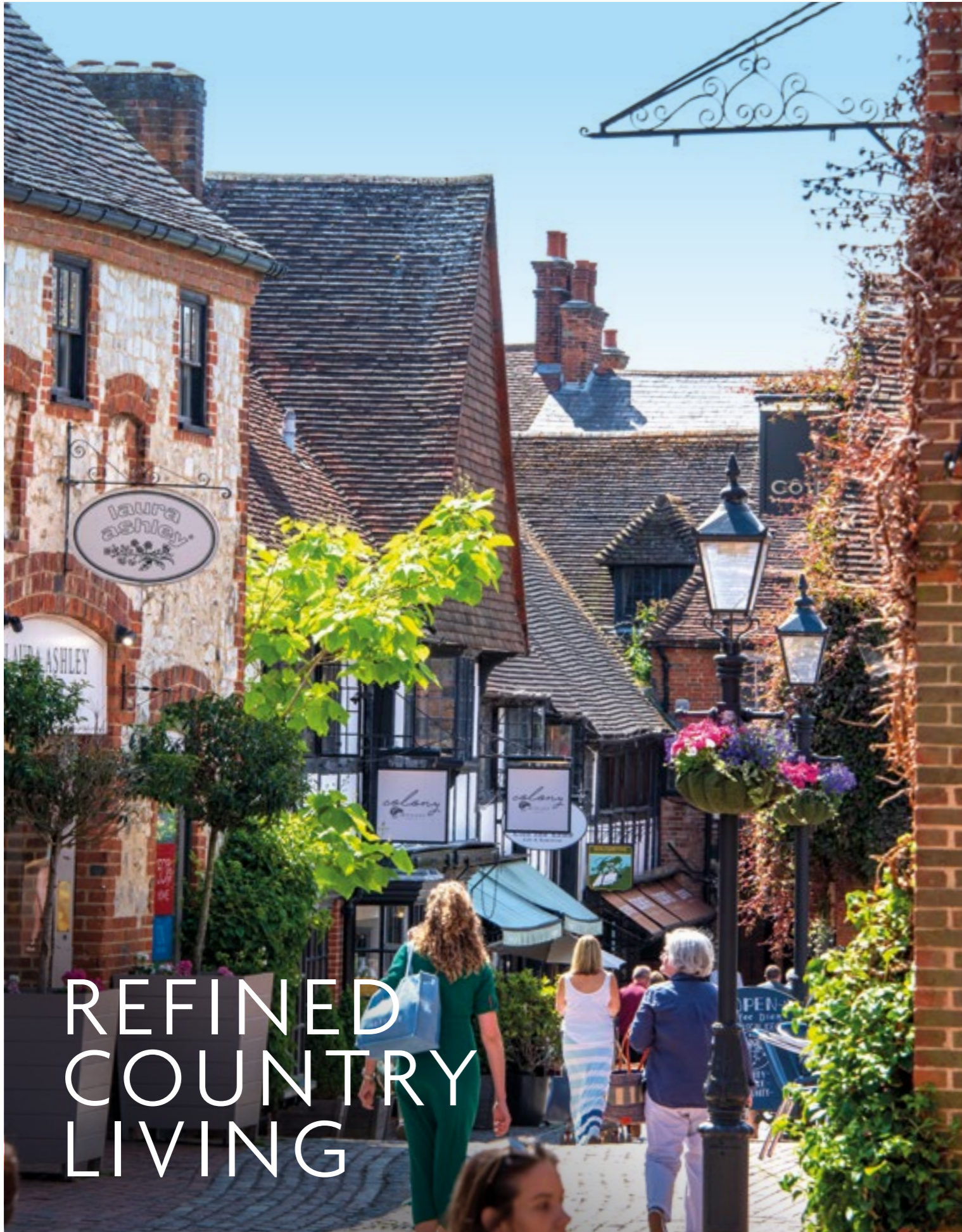
Re-live the thrills and glamour of speed and flight, from over 100 years of British history at **Brooklands Museum**.

Runnymede, beside the River Thames, was witness to King John's historic sealing of Magna Carta over 800 years ago on 15 June 1215.

Rich in history, the 1400-acre **Polesden Lacey** estate dates back to Roman times and boasts stunning views over the Surrey Hills.

Hampton Court Palace was once the favourite home of King Henry VIII. Set alongside the River Thames, this spectacular palace has over 60 acres of award-winning gardens to explore.





With attractive greens, historic pubs, smart restaurants and a mix of quaint high streets and upmarket shopping, Surrey’s towns and villages offer an exclusive lifestyle.

Cobham’s green open spaces, chic high street, good connections and excellent range of schools make it a popular choice for families.

Farnham is a charming historic market town, with a wealth of amenities and shops.

Reigate is a thriving and affluent market town with a high street full of independent shops and restaurants, a beautiful park and an easy commute to London.

Oxshott is a sophisticated village, well suited to those who want to live life in the countryside without having to compromise on access to amenities.

Guildford is home to a cathedral, ancient castle, theatres, galleries and the University of Surrey. Its cobbled high street is lined with smart shops, cafés and restaurants, while the River Wey offers relaxing walks out into the countryside from the town centre.

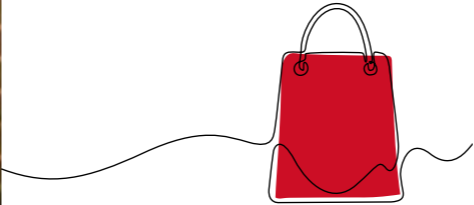


▲ THE CASTLE GROUNDS, REIGATE
◀ FARNHAM

▼ GUILDFORD



▲ THE IVY BRASSERIE, COBHAM



SUSSEX LIFE

Inland Sussex is a county of country lanes, sleepy villages, woods, fields, downs and vineyards; venture out to the 90 miles of coastline and you will find some of the sunniest seaside resorts in England.



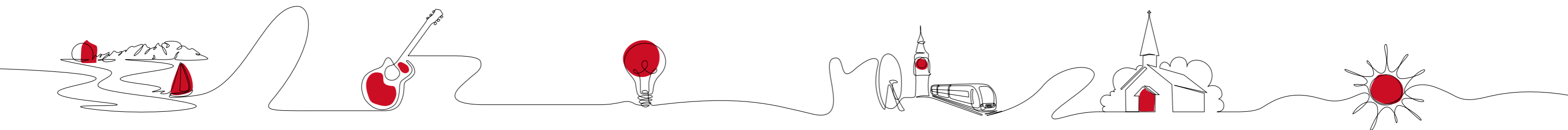
A BRIEF HISTORY OF SUSSEX

THE ROYAL PAVILION, BRIGHTON

The name 'Sussex' is derived from the Old English Suth-Seaxe, meaning 'land or people of the South Saxons'. It is where William the Conqueror won his decisive battle of Hastings in 1066; the Normans went on to build many abbeys and castles in the county, including at Arundel and Pevensey.

Its coastal towns and seaside resorts began to grow in the late 18th century, led by Brighton's rise in popularity under the royal patronage of George IV, who had the magnificent Royal Pavilion built as his residence.

SUSSEX OVERVIEW



FROM COUNTRY TO COAST

Sussex offers a fantastic range of days out from market towns to scenic coastline and stunning countryside, including the famous South Downs.



▲ HALNAKER WINDMILL

CULTURE

Immersed in culture, Sussex hosts a range of music and arts festivals as well as world-renowned motor sports events.



▲ GOODWOOD FESTIVAL OF SPEED

ACADEMIC ACHIEVEMENT

Sussex has over 60 private schools and numerous state schools delivering high standards of education.



▲ GOOD SCHOOLS FOR ALL AGES

CONNECTIONS TO LONDON

The county enjoys good transport connections into London with many journeys taking less than one hour.



▲ ALDGATE EAST UNDERGROUND STATION

FASCINATING HISTORY

Many medieval monuments nestle within Sussex, with Roman influences in Arundel castle and ancient Saxon elements embedded in Chichester.



▲ WEALD & DOWNLAND LIVING MUSEUM

SUNSHINE

Sussex is the sunniest county in the United Kingdom, according to official Met Office records. This makes the county a prime spot for vineyards to produce world-class sparkling wine.



▲ A SUSSEX VINYARD

THE COAST



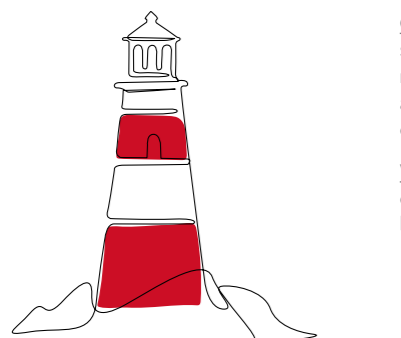
The coastline of Sussex is full of hidden gems waiting to be discovered: beautiful beaches, coastal paths, and sailing and water sports hubs.

◀ EASTBOURNE

▼ EASTBOURNE PIER



▼ WORTHING BEACH



Chichester Harbour is a large natural harbour surrounded by picturesque villages. The massive stretch of tidal flats and saltings is an Area of Outstanding Natural Beauty and of ecological significance.

Worthing is a lively seaside town for shopping, eating, entertainment and family fun at the beach or on the Art Deco pier.

Shoreham-by-Sea sits in a spectacular position on the Sussex coast, at the mouth of the River Adur and with the South Downs as a backdrop.

Eastbourne is known as one of the sunniest locations in the UK and hosts the famous pre-Wimbledon international tennis tournament.

West Wittering beach is a beautiful expanse of golden sand just eight miles south of Chichester, a perfect place for swimming, fun on the beach, walks or water sports.



▲ CHICHESTER HARBOUR

TOWNS AND VILLAGES



▲ LURGASHALL, VILLAGE GREEN

From bustling coastal locations to quieter countryside jewels, Sussex's towns and villages have much to offer.

Brighton sits in the heart of the Sussex coast and is well-known for being a welcoming and diverse city with a passion for culture, creativity and sustainability, as well as its historic landmarks including the iconic Royal Pavilion and pier.

Chichester was both a Roman and Anglo-Saxon settlement and a major market town. The city combines all the attractions of a thriving urban centre, including a leading theatre, with the remains of Roman streets, walls and gateways.

Lurgashall is one of the most beautiful places to play cricket in Sussex. The quaint village has been ranked as the ninth most beautiful in UK and Ireland by Condé Nast Traveller.

East Grinstead is a highly popular location on the edge of the Ashdown Forest. A traditional market town, it offers a high quality of life and activities in the surrounding countryside.

Horsham is a market town with good shops, restaurants and pubs. Hiking and cycling are popular in the nearby countryside and a short distance away is Warnham Nature Reserve where over 100 species of bird can be found.

▼ EAST GRINSTEAD HIGH STREET



▼ HORSHAM



HERITAGE

Home to historic houses, castles and gardens, Sussex is steeped in history, heritage and culture.

▼ DEER PARK AT PETWORTH HOUSE



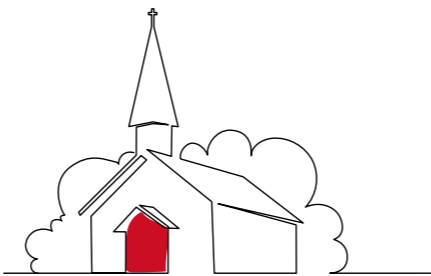
▲ MOSAIC AT FISHBOURNE ROMAN PALACE



▲ ARUNDEL CASTLE



▲ GOODWOOD FESTIVAL OF SPEED



Petworth House displays one of the finest art collections in the care of the National Trust. Immerse yourself in the grandeur of the state rooms containing works by JMW Turner, Van Dyck, Reynolds and Blake. Outside, explore the 700-acre Deer Park and woodland walks.

Fishbourne Roman Palace is the largest residential Roman building in Britain and features the largest collection of mosaics in situ in the UK.

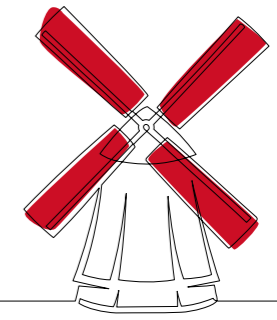
Goodwood is home to the world famous five-day festival, affectionately known as 'Glorious Goodwood', which attracts the best equine athletes and is a memorable day out.

Arundel Castle was built at the end of the 11th century. Set high on a hill, this great castle commands the landscape with magnificent views across the South Downs and the River Arun.

Nestled at the foot of the South Downs, **West Dean Gardens** is one of the greatest restored gardens with a rich creative and social heritage.

RURAL COUNTRYSIDE

Away from the coast, much of Sussex remains rural in character, with national trails, winding lanes and woodland.



◀ NYMANS



▲ SLINDON

◀ THE SOUTH DOWNS

The South Downs National Park has been designated an Area of Outstanding Natural Beauty, encompassing a wide range of landscapes, from dramatic chalk cliffs to rolling hills in the countryside with charming villages and historic towns.

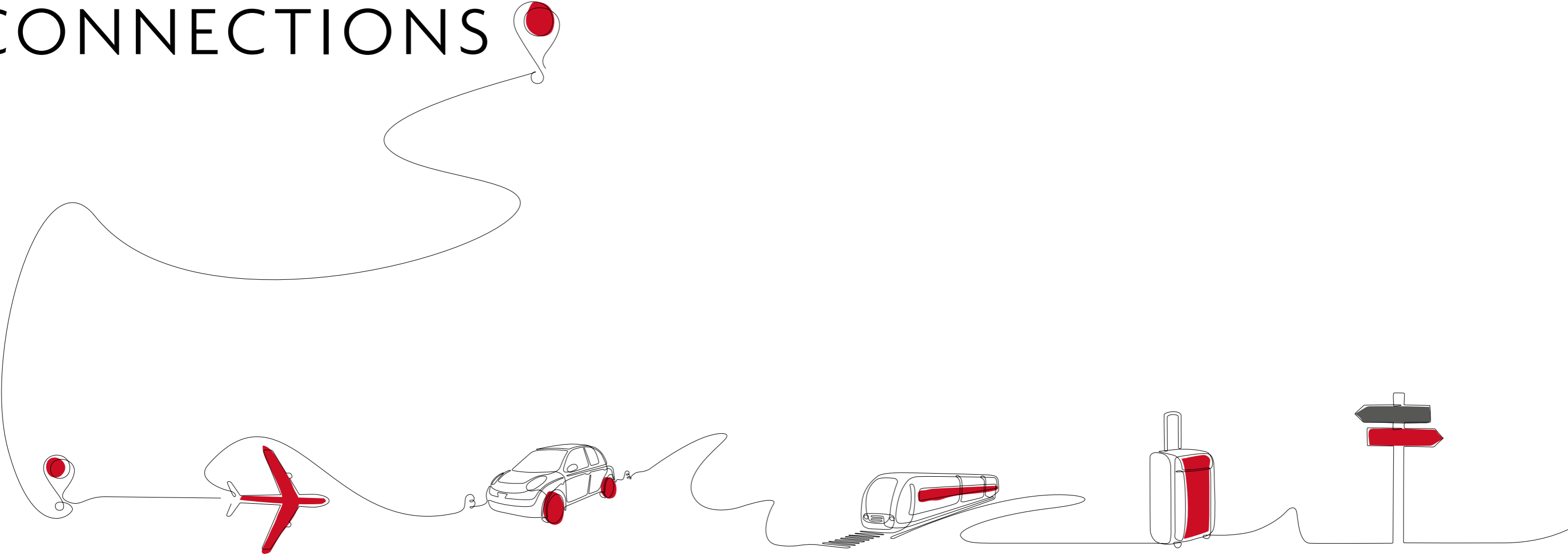
Halnaker Windmill, perched on the hilltop with lovely views, is a Grade II Listed building, once a Second World War observation post and also a neolithic earthworks.

Nymans is a ruined Gothic styled great hall, that has been reimaged as a garden and is a beautiful oasis of calm and tranquillity.

Harting Down is both a biological Site of Special Scientific Interest and a popular place for dog walkers and horse-riders with its views and network of trails.

Slindon is a very pretty village of flint and brick cottages surrounded by the Slindon Estate, which covers 1,400 hectares of woodland, downland, farmland and parkland.

EXCELLENT CONNECTIONS



AIR TRAVEL

The UK's two major airports, Heathrow and Gatwick, are both within easy reach of much of the Southern Counties for international travel.

ROAD CONNECTIONS

The Southern Counties are extremely well connected by road, with motorways including the M2, M3 and M25, plus major A roads connecting towns and cities.

RAIL LINKS

Many towns across the Southern Counties benefit from direct train services to central London in under an hour, with numerous lines connecting other cities, towns and villages.

FERRY CROSSINGS

Dover, Portsmouth and Southampton are major ports offering a range of ferry crossings to mainland Europe, as well as cruises to destinations around the world.

CHANNEL TUNNEL TO FRANCE

LeShuttle takes cars and their passengers through the Channel Tunnel to Calais, France in just 35 minutes.

MAJOR EMPLOYERS IN THE SOUTHERN COUNTIES

Thanks to good transport links and proximity to international airports, the Southern Counties are home to leading national and global companies. This provides excellent career opportunities and is a major draw for professionals.





EDUCATION IN THE SOUTHERN COUNTIES

CHARTERHOUSE SCHOOL, GODALMING, SURREY

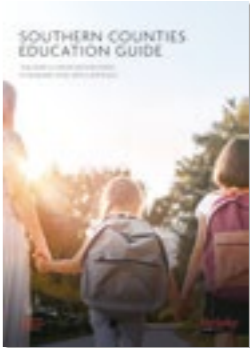


Berkeley's developments across Hampshire, Kent, Surrey and Sussex are located within close proximity to some of the country's leading schools and universities. These include some of the oldest and most historic establishments in the region.

Grammar schools
Grammar schools play a prominent role in the UK education system, with their roots tracing back to the 16th century. There are a number of grammar schools across the Southern Counties, with Kent home to a particularly high preponderance.

Private schools
The Southern Counties boast some of the UK's most impressive and famous independent schools, including Charterhouse, The King's School, Christ's Hospital and Winchester College.

Universities
As well as being close to top UK universities, Berkeley developments in the Southern Counties also enjoy easy access to London's renowned institutions.



Discover more about education in Hampshire, Kent, Surrey and Sussex in our dedicated guide.



WHAT OUR CUSTOMERS ARE SAYING



“I love nothing more than taking Leo out to the Surrey Hills, onto the Downslink path which is very close to home, or just on the local footpaths or wandering into the village. Cranleigh is a delightful village to live in, with every shop you would need.”

Lesley, Leighwood Fields resident



“The greenery and the surrounding countryside are stunning, particularly in the evening when the sun sets – we’re so lucky to have such beautiful countryside on our doorstep.”

Dr Chan, Leighwood Fields resident



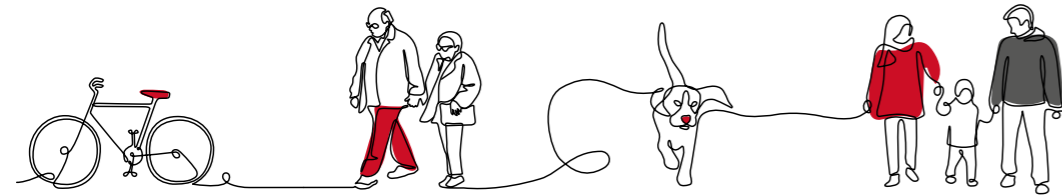
“The house at Highwood Village was the first one we viewed that we felt met all of our criteria and, as it was a new build, we could get all the specifications that we wanted without having to do a thing ourselves!”

Rasmus, Rikke and family, Highwood Village residents

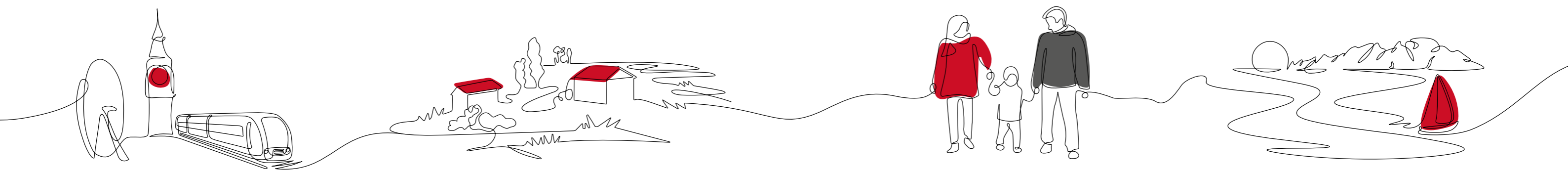


“If you are looking for a beautiful new home that is fully equipped to move into, I would highly recommend buying with Berkeley!”

Charlotte, Knights Quarter resident



WHY WE ARE DEVELOPING IN THE SOUTHERN COUNTIES



Strong local market and railway connections into central London for commuters.



▲ FOAL HURST GREEN, KENT

Opportunity to provide unique, high quality and exclusive developments set within landscaped grounds.



▲ LEIGHWOOD FIELDS, SURREY

Support from Local Authority to deliver much needed housing.



▲ HARTLAND VILLAGE, HAMPSHIRE

Attractive coast and countryside setting.



▲ HIGHWOOD VILLAGE, SUSSEX

THE BERKELEY DIFFERENCE

Designed for life

At Berkeley, we are committed to creating great places where people love to live, work and relax. Where the homes are light filled, adaptable and finished to very high standards. Where carefully planned public areas enhance wellbeing and quality of life for residents and visitors. Where people feel a sense of community.

Exceptional customer service

As a first-class business we place the highest priority on customer service and will help and support you throughout the buying process and beyond. Our levels of customer service exceed that of other premium brands, recently receiving a Gold Award by In-house Research.

High specification

Individually designed kitchens with high quality appliances and a carefully selected range of luxury choices and finishes allow you to personalise your home. Quality comes as standard in all our homes.

Placemaking

We are renowned for our commitment to quality and it starts with choosing desirable locations, be that the city, village or countryside. Each development is different. We partner with world-leading architects to devise a wide choice of individually designed homes, and with interiors specialists to create beautiful rooms using quality materials.

▼ LEIGHWOOD FIELDS



▲ HIGHWOOD VILLAGE



▲ HARTLAND VILLAGE

► HARESHILL



