

FILMWORKS

EALING

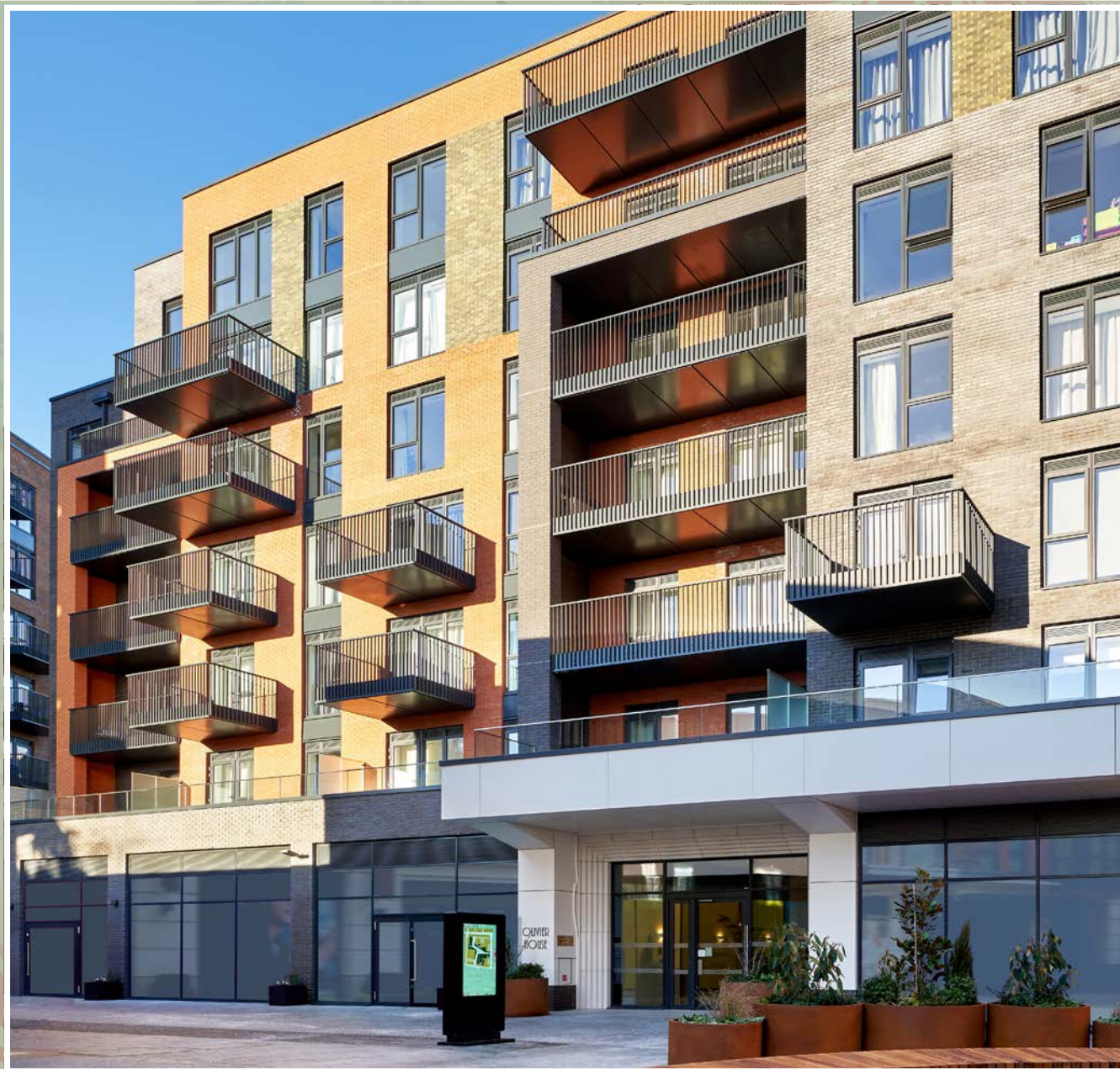
PROPERTY 113

**2 BEDROOM**

---

OLIVIER  
HOUSE

---





## A MODERN GREAT

*Filmworks infuses a new dimension to Ealing's enticing personality. Paying homage to the historic Empire cinema; it takes a bold step into the now with a high-quality mix of apartments and carefully-curated leisure district that showcases an exciting new destination for the capital. Charming personality and tranquil open spaces set Ealing as a unique West London postcode.*

*In tune with Ealing's history, the star of Filmworks will be the spectacular eight-screen Picturehouse cinema. Filmworks offers an adventurous mix of shops, restaurants and cafés; all perfectly located around a central and open piazza.*



11 MINS  
TO BOND STREET\*



12 MINS  
TO OXFORD STREET\*  
\*UPON COMPLETION OF CROSSRAIL



A FIFTH OF THE BOROUGH  
IS GREEN AND OPEN SPACE



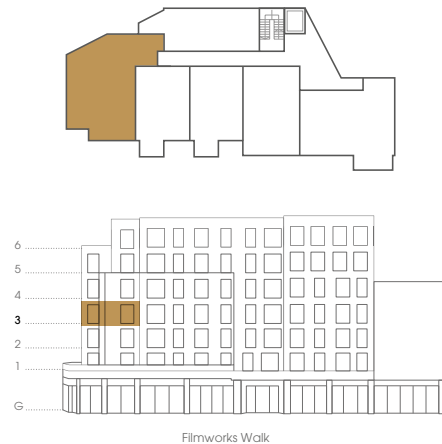
Computer Generated Image is indicative only

## APARTMENT 113 – THIRD FLOOR

### 2 BEDROOM

Total Internal	87.3 sq m	939 sq ft
Living/Dining	7.7m x 3.4m	25'3" x 11'4"
Kitchen	3.4m x 2.4m	11'2" x 8'0"
Bedroom 1	4.1m x 3.5m	13'6" x 11'6"
Bedroom 2	3.7m x 2.8m	12'0" x 9'0"
Balcony	7.2 sq m	78 sq ft

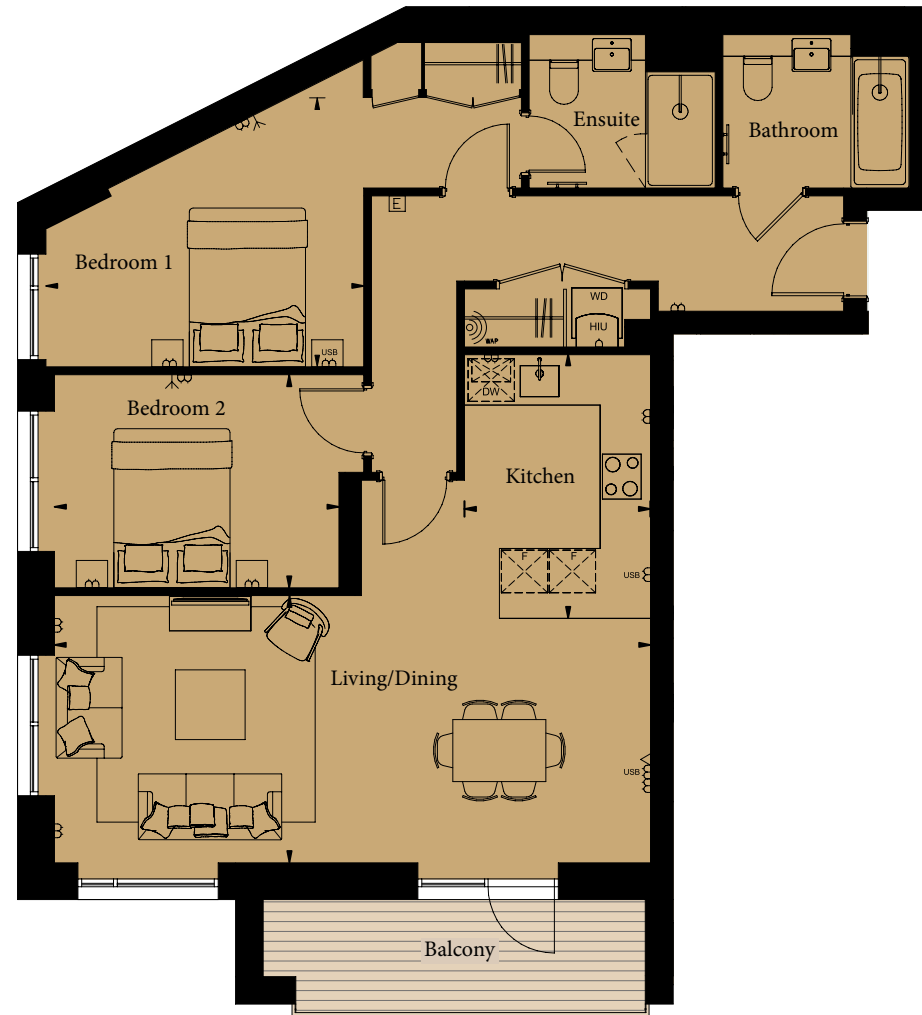
### FLOORPLATE



### KEY

	Fridge/freezer		Washer/dryer
	Dishwasher		Heating unit
	Tall kitchen unit – may contain appliances		Towel radiator
	Hob/oven		Provision for a led HD TV to be wall-mounted.
	Microwave oven		

Floor plans shown for St George are for approximate measurements only. Exact layouts and sizes may vary. All measurements may vary within a tolerance of 5%. The dimensions are not intended to be used for carpet sizes, appliance sizes or items of furniture.



Views south towards  
Walpole Park





## LIVING ROOM



Virtual furnishing is of property 113 and is indicative only

## KITCHEN



Virtual furnishing is of property 113 and is indicative only



## BEDROOM 1



Virtual furnishing is of property 113 and is indicative only

## BEDROOM 2



Virtual furnishing is of property 113 and is indicative only



## EN SUITE / BATHROOM



Virtual furnishing is of property 113 and is indicative only







## CONTACT

020 8108 7462

[EalingFilmworks@stgeorgeplc.com](mailto:EalingFilmworks@stgeorgeplc.com)

[www.filmworks-ealing.co.uk](http://www.filmworks-ealing.co.uk)

OPEN BY APPOINTMENT ONLY -  
PLEASE CALL AHEAD TO ARRANGE

CLICK TO ARRANGE A  
VIEWING OR VIRTUAL TOUR

OUR VISION  
**2030**  
TRANSFORMING TOMORROW

 **Berkeley**  
Group  
Proud to be a member of the  
Berkeley Group of companies

 **St George**  
Designed for life