



Farmstead
Hartley Road,
Cranbrook,
Kent
TN17 3QX

For more information please visit our
website or contact our Sales Consultants:

farmsteadtannersbrook.co.uk
farmstead@berkeleygroup.co.uk
T: 01580 428 090

To find out more please scan QR code
to view full development brochure.



THE REED

3 BEDROOM HOUSE



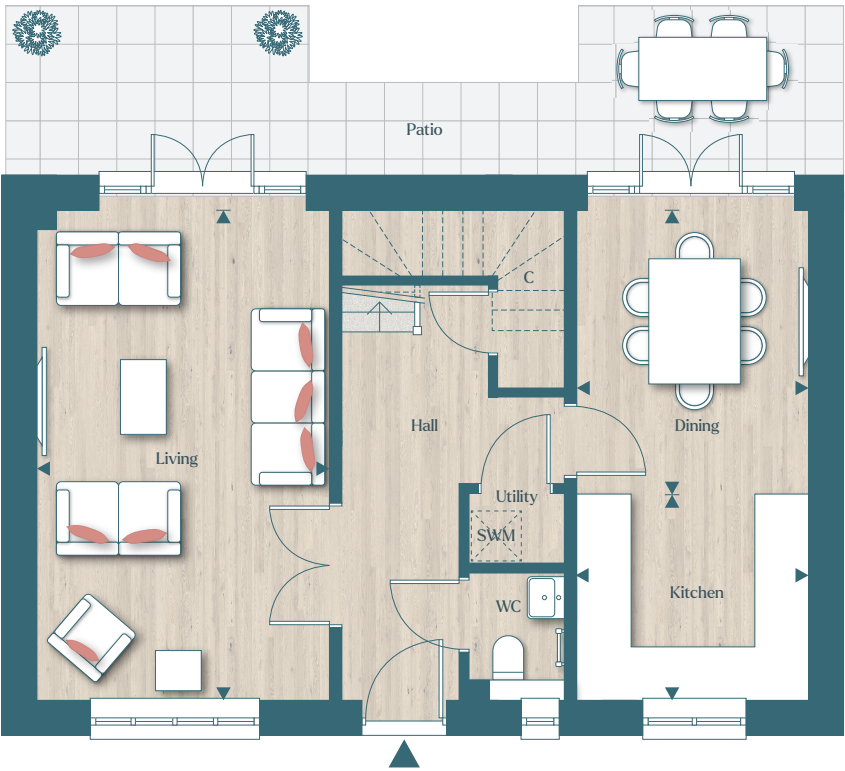
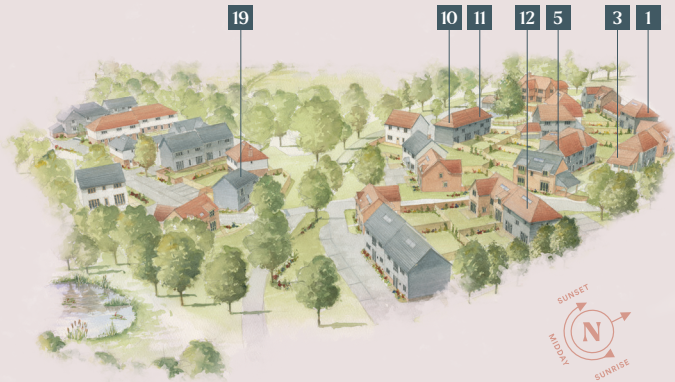
THE REED

3 BEDROOM HOUSE

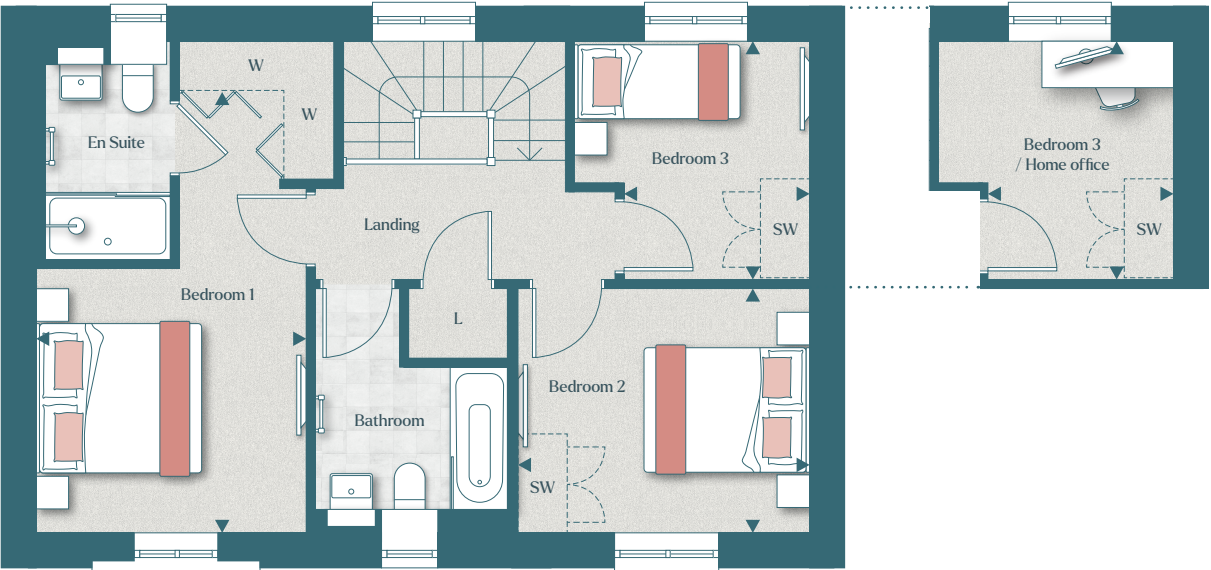
HOUSES 1, 3, 5, 10, 11, 12 & 19

Total Area 110.1 sq m (1,184 sq ft)

| GROUND FLOOR | | |
|-------------------------|---------------|-----------------|
| Kitchen | 2.50m x 2.80m | 8' 2" x 9' 2" |
| Living | 5.92m x 3.52m | 19' 5" x 11' 6" |
| Dining | 3.42m x 2.80m | 11' 2" x 9' 2" |
| FIRST FLOOR | | |
| Bedroom 1 | 3.18m x 3.24m | 10' 5" x 10' 6" |
| Bedroom 2 | 2.95m x 3.52m | 9' 8" x 11' 7" |
| Bedroom 3 / Home office | 2.92m x 2.28m | 9' 6" x 7' 5" |



GROUND FLOOR



FIRST FLOOR

Artist's impression, for illustrative purposes only. Facade and roof details may vary. Floorplans shown are for approximate measurements only. Exact layouts and sizes may vary. All measurements may vary within a tolerance of 5%. The dimensions are not intended to be used for carpet sizes, appliance sizes or items of furniture. Furniture layouts are indicative only. Kitchen layout indicative only. Garden and patio sizes may vary. Please ask Sales Consultant for further information. Floorplans have been sized to fit the page, as a result this plan may not be at the same scale as plans on other pages.

◀▶ Measurement Points C Cupboard W Wardrobe SW Space for Wardrobe L Linen Cupboard SWM Space for Washing Machine