

CHELSEA CREEK

*the*  
**Arbour**

SHOWHOME

AT

*Westwood House*

INTERIOR DESIGNED  
BY

**UNTOLD**

INTERIORS



A detailed architectural rendering of the Chelsea Creek residential development. The image shows a long, multi-story apartment building with a modern design, featuring large windows and balconies with glass railings. The building is situated along a canal, with a small bridge crossing the water in the foreground. People are depicted walking on the bridge and standing near the water, adding a sense of life and activity to the scene. The sky is clear and blue, and the overall atmosphere is bright and contemporary.

*Chelsea Creek brings a  
characteristically European  
style of waterside living to  
Central London.*

Award-winning architectural practice Squire and Partners looked to Amsterdam and Copenhagen for inspiration. Bright, contemporary apartments overlooking restful canal waterways and tree-lined promenades offer a refreshingly distinctive urban lifestyle.

Discover peace and tranquillity away from fast-paced life. Over half of Chelsea Creek is dedicated to carefully considered open spaces, such as landscaped gardens, lawns and flowerbeds. Wander down tree-lined avenues and walk over beautifully designed bridges to enjoy the meandering waterways unique to Chelsea Creek.



# UNTOLD

## INTERIORS

*Untold is a creative interior design studio that thrives on realising a unique story for their clients, with a passion for unfolding an untold story, creating spaces with a unique identity.*

**Their innovative and holistic approach conveys a sense of authenticity and individuality. Their designs are holistically considered to communicate clients' ideas and express the essence of their personality.**

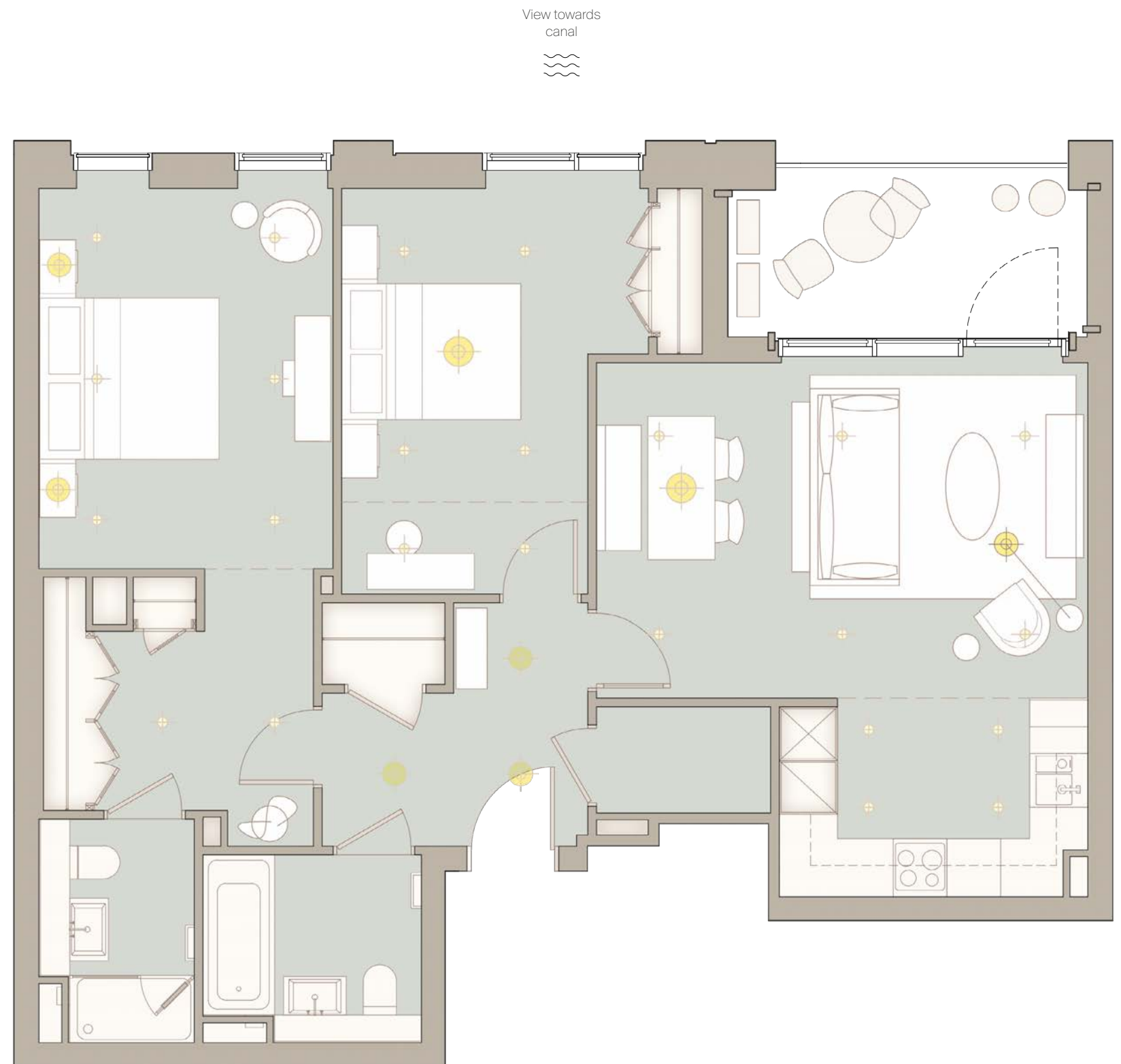
UNTOLD was launched in 2018 when Samantha Liu and Annabel Hickton decided to join forces to build on their more than 25 years' combined experience delivering the highest level of bespoke service to clients, honing their unique design touch on some of the most high-profile projects of the past decade.



# the Arbours

SHOWHOME

AT  
Westwood House



LIVING / DINING	5.49M X 3.75M	18' 0" X 12' 3"
KITCHEN	3.45M X 2.22M	11' 4" X 7' 3"
BEDROOM 1	3.28M X 4.25M	10' 9" X 13' 11"
BEDROOM 2	3.43M X 4.53M	11' 3" X 14' 10"
BALCONY	7.04 SQ M	76 SQ FT

TOTAL INTERIOR AREA		TOTAL EXTERIOR AREA	
89.20 SQ M	960 SQ FT	7.04 SQ M	76 SQ FT

Washing machine Integrated fridge freezer 4 ring hob Cupboard Utility room TV PS Privacy screen

Floorplan shown is for approximate measurements only. Exact layouts and sizes may vary. All measurements may vary within a tolerance of 5%. The dimensions are not intended to be used for carpet sizes, appliance sizes or items of furniture.

Click here to view gallery >

Your attention is drawn to the fact that in rare circumstances it may not be possible to obtain the exact products or materials referred to in the specification. St George reserves the right to alter, amend or update the specification, which may include changes in the colour, material and/or brand specified. In such cases, a similar alternative will be provided. St George reserves the right to make these changes as required. A number of choices and options are available to personalise your home. Choices and options are subject to timeframes, availability and change.





*the design*



## THE STYLE

*Each apartment at Westwood House capitalises on an abundance of natural light from their floor to ceiling windows, access to private outdoor terrace space, and impressive views out onto both the landscaping and the winding waterways.*

Untold has sought inspiration from the gardens, tree-lined avenues and the open spaces at Chelsea Creek to create a complementary design with careful sourcing and a sense of 'homefulness' (a feeling of home and hope in our new era), at the core. Nature and sustainability are at the heart of the inspiration for this apartment.

**Annabel Hickton Co-Founder of Untold Interiors** says; "We have focused our design on creating a sense of home and wellbeing by sourcing natural materials and furniture where possible."





















## LIGHT REFLECTION & SUSTAINABILITY

The entrance hall and living room bring about an immediate sense of calm.

On the ceiling there's a high gloss finish\* to help reflect additional light into the rooms. The hallway also has a beautiful bobbin cornice\* detail to add impressive texture.

The apartment is dressed with cushions from the Untold Collection, re-using fabrics from past projects to avoid the fabrics going to waste.



*A blend of modern and traditional design*





Photography is of The Arbour Showhome at Westwood House and is indicative only

## NATURAL TEXTURES

The large open plan kitchen/living area, which benefits from an abundance of natural light both from the windows and the terrace, sparks a real feeling of indoor/outdoor living.

The bespoke joinery, is in a home-grown beechwood and displays a collection of objects from around the world – a curation of artifacts which tell a story. The soft, beige boucle sofa is designed to create an overall feeling of the textures found in nature.

The dining table is a British-made oak and has bespoke fluted wall panelling behind it. The cork tables in the living area are a standout feature of the design as they both draw the eye and highlight Untold's focus on natural materials. The harvesting of cork doesn't require any trees to be cut down - the aesthetic and sustainable focus of these tables complement the overall design intent.

Photography is of The Arbour Showhome at Westwood House and is indicative only

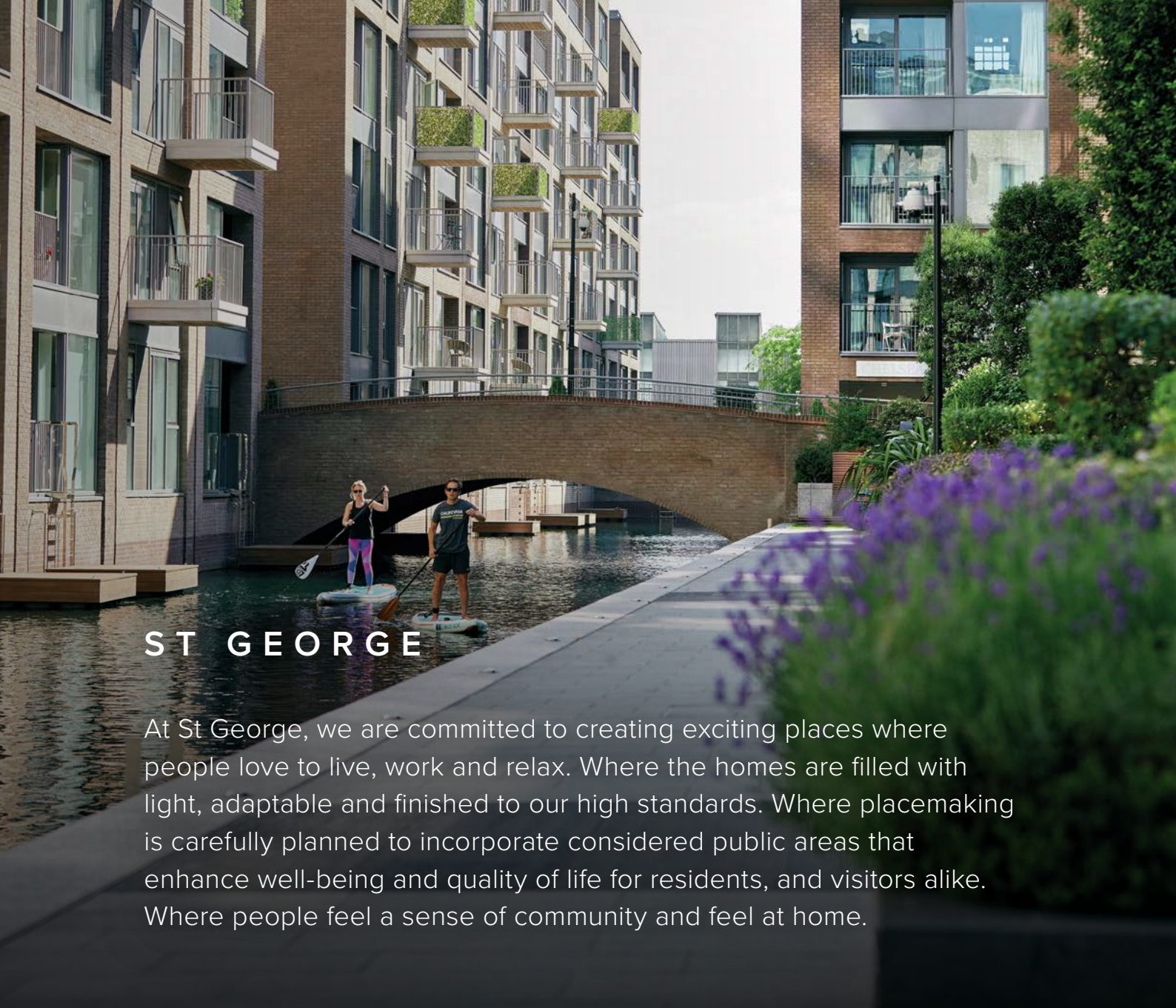


*A true nature led experience through  
the medium of design*







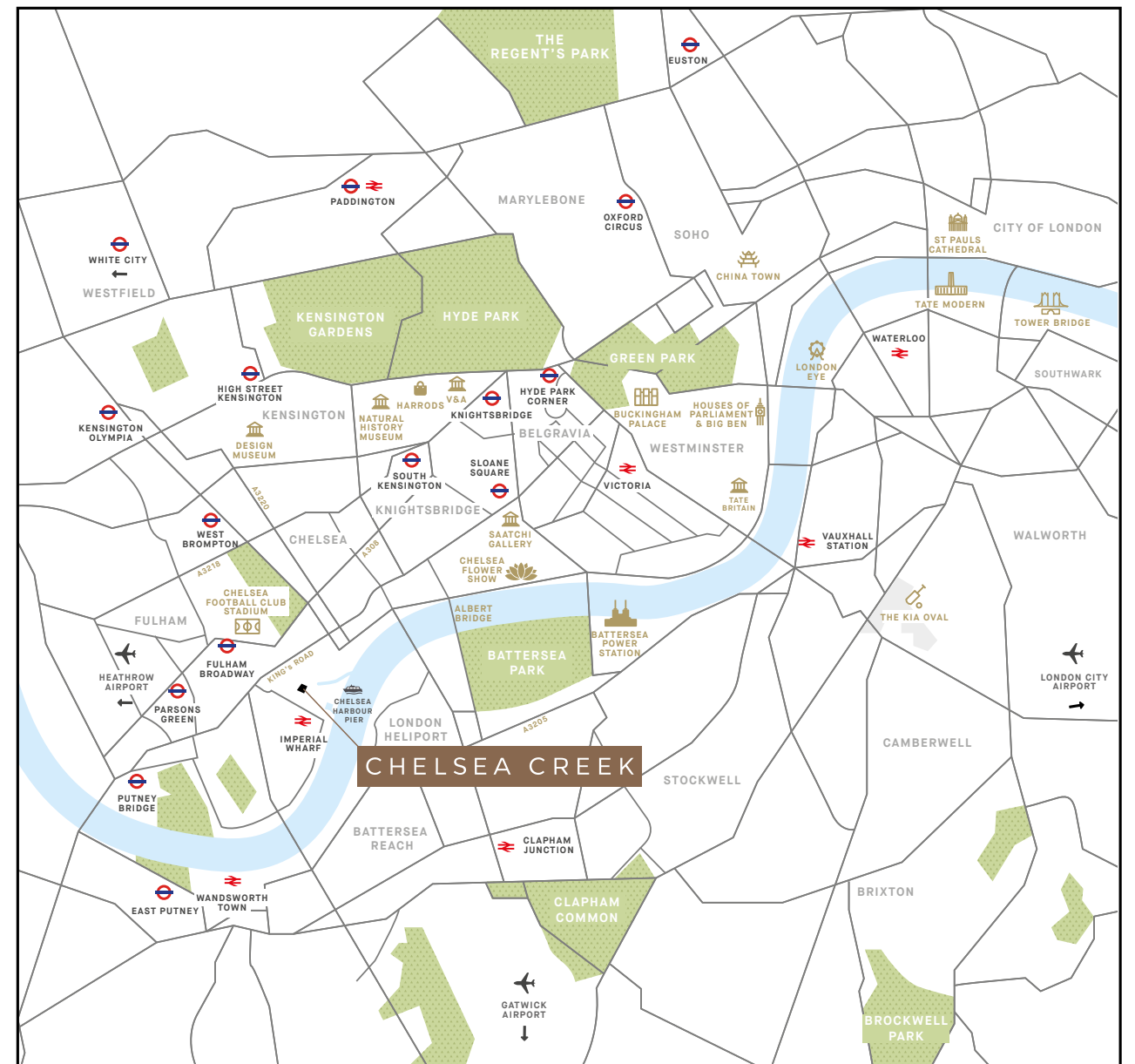


## ST GEORGE

At St George, we are committed to creating exciting places where people love to live, work and relax. Where the homes are filled with light, adaptable and finished to our high standards. Where placemaking is carefully planned to incorporate considered public areas that enhance well-being and quality of life for residents, and visitors alike. Where people feel a sense of community and feel at home.

## ST GEORGE PROJECTS

We specialise in high quality mixed-use regeneration projects across the capital. Our portfolio stretches from colourful and vibrant Camden Town to the sophisticated streets of Chelsea, the green boroughs of Wandsworth to the iconic and historic City of London. We strive to deliver sustainable new developments across some of London's most desirable locations. Our wide mix of locations, whatever your requirements, are available to explore today.



### CHELSEA CREEK SALES AND MARKETING SUITE

Chelsea Creek, 9 Park Street, London SW6 2FS  
T +44 (0) 20 7610 9693  
E [sales@chelseacreek.co.uk](mailto:sales@chelseacreek.co.uk)

*Click here to visit our website*



The information in this document is indicative and is intended to act as a guide only as to the finished product. Accordingly, due to the St George policy of continuous improvement, the finished product may vary from the information provided. It may not be possible to provide the exact materials as referred to in the brochure. In such cases a suitable alternative will be provided. St George reserves the right to make these changes as required. These particulars should not be relied upon as statements of fact or representations and applicants must satisfy themselves by inspection or otherwise as to their correctness. This information does not constitute a contract or warranty. The dimensions given on plans are subject to minor variations and are not intended to be used for carpet sizes, appliance sizes or items of furniture. Chelsea Creek and The Arbour are marketing names and will not necessarily form part of the approved postal address. Applicants are advised to contact St George to ascertain the availability of any particular property. Map is not to scale and shows approximate locations only. January 2023.

Purchasing uncompleted properties located outside Hong Kong is complicated and contains risk. You should review all relevant information and documents carefully. If in doubt, please seek independent professional advice before making a purchase decision. Planning permission number: 2018/02929/FUL. Borough/council issuing permission: London Borough of Hammersmith and Fulham. Acquiring interest: 999-year leasehold interest from June 2010.



