

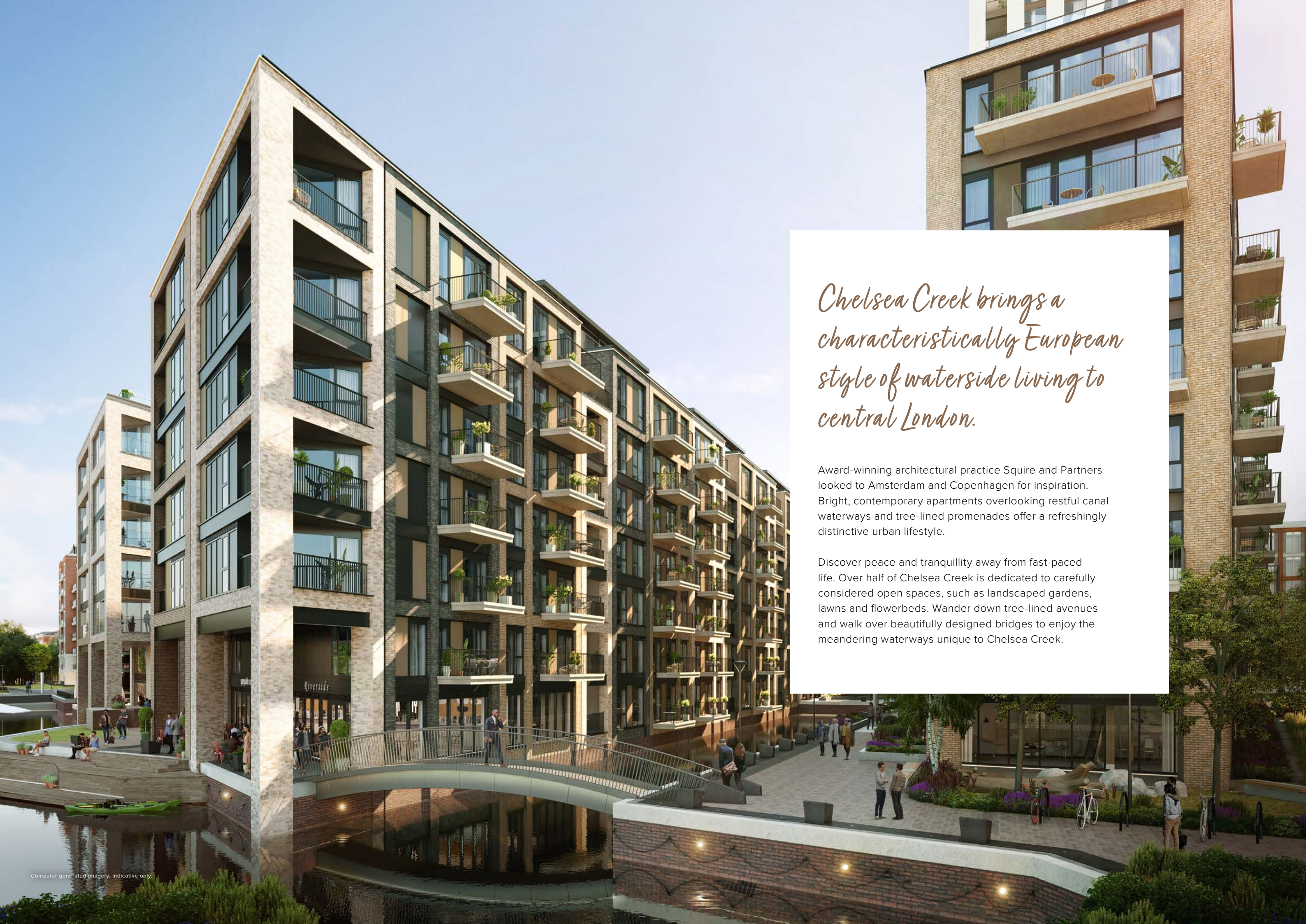
CHELSEA CREEK



the
Explorer

SHOW APARTMENT

BY
GODDARD LITTLEFAIR



Chelsea Creek brings a characteristically European style of waterside living to central London.

Award-winning architectural practice Squire and Partners looked to Amsterdam and Copenhagen for inspiration. Bright, contemporary apartments overlooking restful canal waterways and tree-lined promenades offer a refreshingly distinctive urban lifestyle.

Discover peace and tranquillity away from fast-paced life. Over half of Chelsea Creek is dedicated to carefully considered open spaces, such as landscaped gardens, lawns and flowerbeds. Wander down tree-lined avenues and walk over beautifully designed bridges to enjoy the meandering waterways unique to Chelsea Creek.

GODDARD LITTLEFAIR

Goddard Littlefair is a London-based, globally renowned interior design studio, established in 2012 by Martin Goddard and Jo Littlefair.

The company's talented, international team works on multi-award winning hotel, hospitality and spa projects across the globe, as well as high-end residential schemes. Their impressive roster includes The Corniche and 9 Millbank.

Taking inspiration from the dynamic, avant-garde fashion history of the area and the personalities, such as Vivian Westwood and Mary Quant, who thronged there, many of the creative fashion houses pushed the boundaries in their respective fields, the design of the apartment embodies the same spirit of adventure while harnessing the nonchalant glamour of Chelsea.

A key element for Goddard Littlefair schemes is to anticipate the interests and needs of future occupiers and ensure

that the design of the interiors dovetail harmoniously with these homes to more than deliver, but delight. To that end the design team recognised there was a huge amount of London culture, entertainment and dining options available in the vicinity and that the apartments' role in this lifestyle was to be a supportive refuge and a flexible space to work and relax in.

The resulting design is sophisticated and contemporary with references to travel, the written word and experience in the creative industries throughout. The colour scheme itself is calm and neutral but does deepen through golden tones, amber and rust with strong accents in blues and dark oak furniture pieces. Added to this are highlights of brushed brass metallic and figured marbles used in lighting features and decorative accessories.



the Explorer

FLOORPLAN



Click here to take a virtual tour >

KITCHEN/LIVING/DINING	39.93 SQ M	429.80 SQ FT
KITCHEN (ON ITS OWN)	10.40 SQ M	111.94 SQ FT
BEDROOM 1	25.25 SQ M	271.79 SQ FT
BEDROOM 2	12.93 SQ M	139.18 SQ FT
BEDROOM 3 / STUDY	13.41 SQ M	144.34 SQ FT

TOTAL INTERIOR AREA
142.42 SQ M 15,33.00 SQ FT

TOTAL EXTERIOR AREA
14.73 SQ M 158.55 SQ FT

Washing machine Integrated fridge freezer 4 ring hob Utility room TV Privacy screen

Floorplan shown is for approximate measurements only. Exact layouts and sizes may vary. All measurements may vary within a tolerance of 5%. The dimensions are not intended to be used for carpet sizes, appliance sizes or items of furniture.

Your attention is drawn to the fact that in rare circumstances it may not be possible to obtain the exact products or materials referred to in the specification. St George reserves the right to alter, amend or update the specification, which may include changes in the colour, material and/or brand specified. In such cases, a similar alternative will be provided. St George reserves the right to make these changes as required. A number of choices and options are available to personalise your home. Choices and options are subject to timeframes, availability and change.

the design



LIVING AND DINING AREAS

The living and dining room were designed to deliver a comfortable, yet assured and elegant entertaining space. The bespoke joinery wall, anchoring the living room to one side of the space, was created with rich leather panels, black marble with gold veins and brass insets.

This left the dining area and kitchen to perfectly adjoin one another, facilitating an effortless entertaining zone within the apartment. During the day the terrace also benefits the living space offering the ability to bring in light and life, while a smoky glass pendant over the six-seater dining table transitions the apartment to the evening, adding glamour with its subtle light, while leather wrapped dining chairs ensure a comfortable evening can be spent enjoying food and conversation.

Interior photography is of the Living Room and Terrace in The Explorer showhome and is indicative only



*designed to deliver a
comfortable, yet assured and
elegant entertaining space*

Interior photography is of the Living / Dining Room in The Explorer showhome and is indicative only







Interior photography is of the Study in The Explorer showhome and is indicative only

*rich amber coloured leather
wrapped onto shelves and panels
provides a warm ambience*

WORK/RELAXING SPACES

Working from home has become second nature, and seeing this trend set to continue beyond the restrictions of the current climate, Goddard Littlefair dressed one room as a dedicated study.

This offered a flexible solution for a couple to co-exist, through a double sided leather wrapped desk served by a chair and pull up stool, while leaving ample room for a comfortable sofa and plentiful storage provided by a bespoke fitted joinery unit.

Rich amber coloured leather wrapped onto shelves and panels provides a warm ambience to the room while the wall colour itself is bravely dark, expressing that creative and slightly daring ambition for the apartment.

Interior photography is of the Study in The Explorer showhome and is indicative only







Interior photography is of the Bedroom in The Explorer showhome and is indicative only

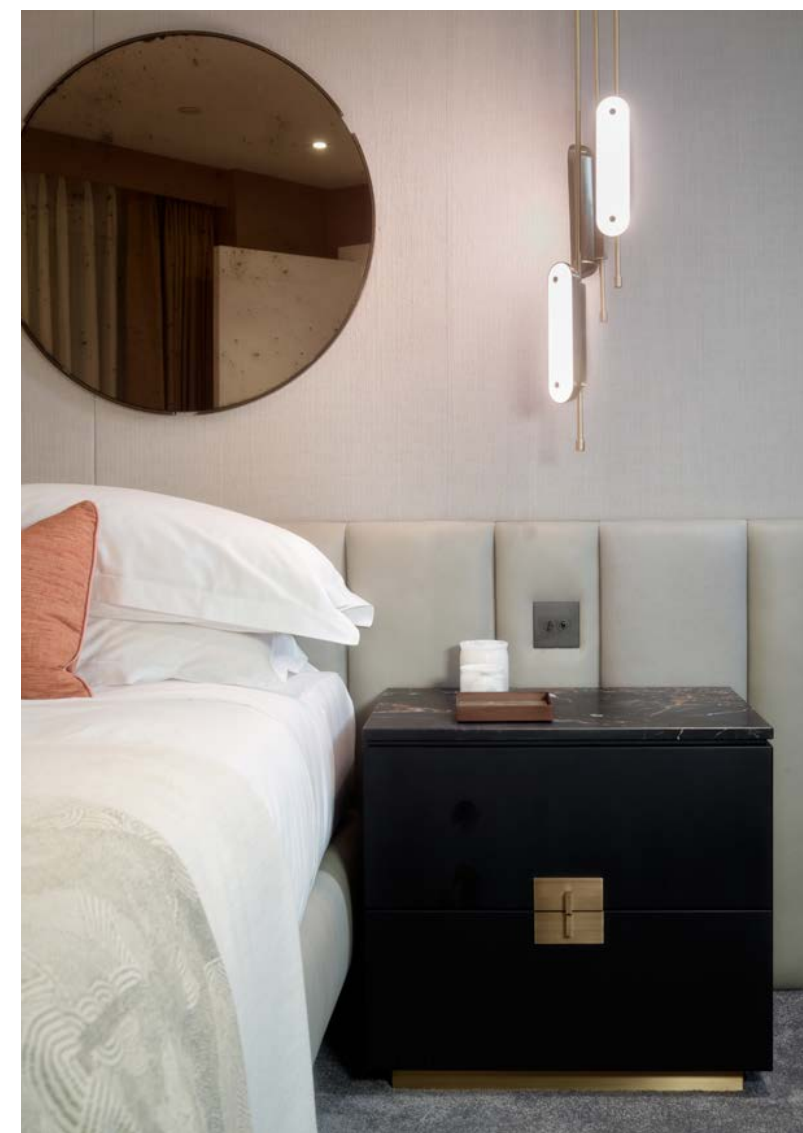
*a simple, circular mirror... reflecting
the outside and adding to a sense of
space and calm*

MAIN BEDROOM

The main bedroom is softened and lightened with linen wrapped upholstered panels behind the bed which itself has been kept low and elegant, wrapped in stone coloured leather and complemented by a fluted leather headboard running the full width of the space.

Dramatic marble and brass pendants hang on either side of the bed, keeping the black marble topped nightstands clear, while their perfect symmetry creates a harmonious feature themselves. A simple, circular mirror was all that was needed over the centre of the headboard, reflecting the outside and adding to a sense of space and calm.

Interior photography is of the Bedroom in The Explorer showhome and is indicative only



GUEST BEDROOM

As a contrast, the guest bedroom takes on a darker tone to the walls but here Goddard Littlefair chose to commission artists to hand-paint gold squares running horizontally around the room.

An uncomplicated device, this adds a layer of decoration that nods to the film and photography industries which Chelsea historically had connections with.

Interior photography is of the Guest Bedroom in The Explorer showhome and is indicative only



Interior photography is of the Guest Bedroom in The Explorer showhome and is indicative only

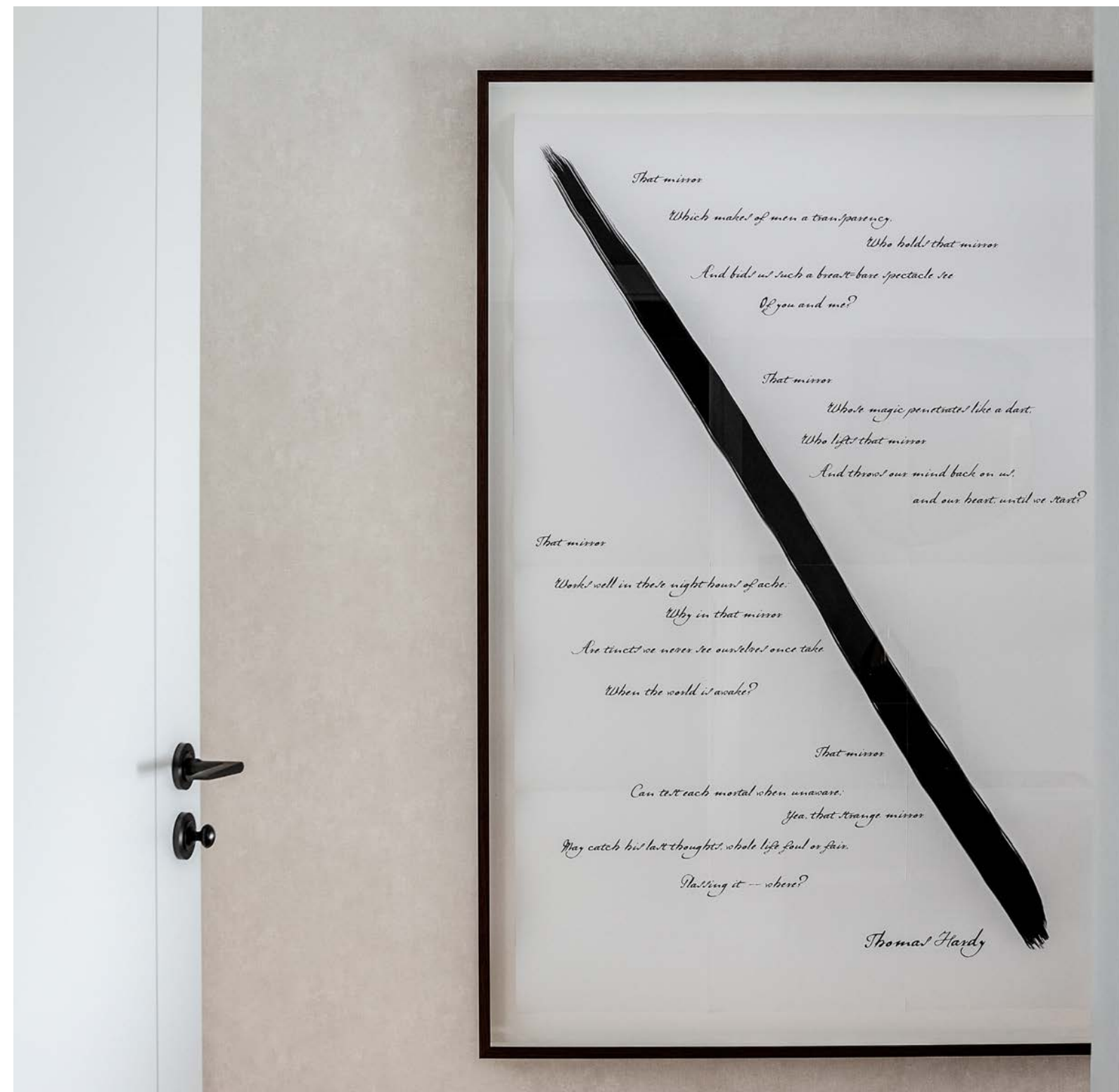
hand-painted gold squares... add a layer of decoration that nods to the film and photography industries



Interior photography is of the Entrance Hallway in The Explorer showhome and is indicative only

*the collection contains pieces
covering a diverse range of mediums
from sculpture to photography*

Interior photography is of the Entrance Hallway in The Explorer showhome and is indicative only



ARTWORK AND STYLING

Overlaid throughout the artwork concept and narrative has been developed to accentuate and enhance the design themes which inspired the apartment design.

The team envisaged a travel writer who had explored the globe extensively, researched his craft and furthered his understanding through the related industries of art and film. The collection contains pieces covering a diverse range of mediums from sculpture to photography which, while being eclectic, also demonstrates the natural inquisitiveness of the collector.

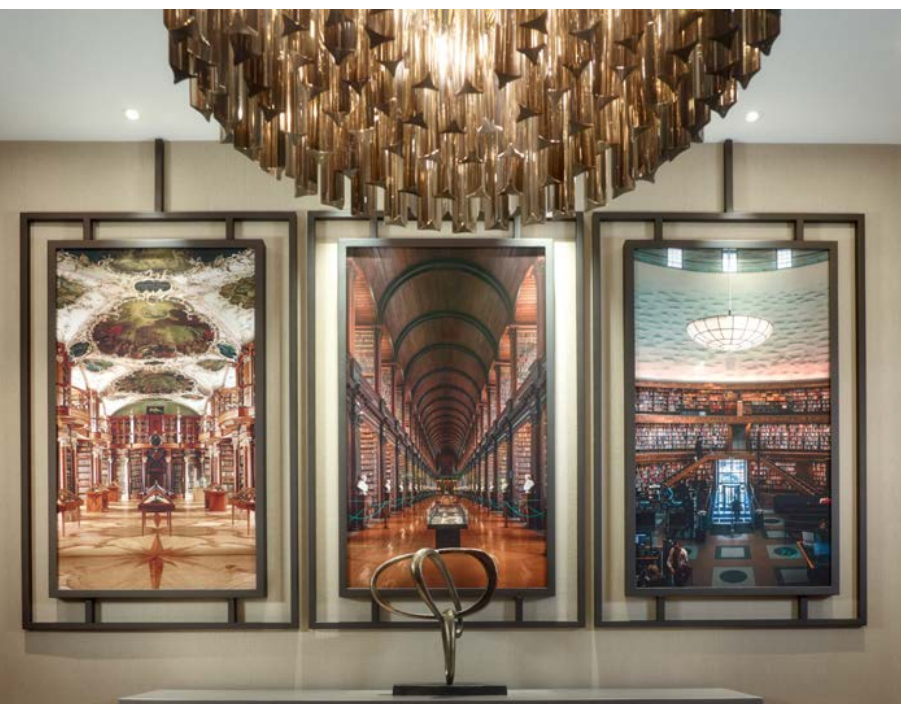


Interior photography is of the Entrance Hallway in The Explorer showhome and is indicative only

The entrance hall is welcoming and bright but provides a significant opportunity to display pieces of art and the team commissioned two sculptural panels to frame the fully upholstered bench and full-length mirror. These panels feel extremely contemporary yet have a hint of mid-century style about them, which juxtaposed against a framed, wildly over-scaled poem 'Moments of Vision' by Thomas Hardy reminding us of Britain's rich cultural history. Further artworks show reams of torn books framed in an unexpected way, again inviting the viewer to take a closer look.

reminding us of Britain's rich and cultural history

Interior photography is of the Dining area in The Explorer showhome and is indicative only



The dining room wall has a striking trio of photographs of libraries from around the world hung in bespoke metal frames with rods to the ceiling and all individually lit with spotlights. Elsewhere in the room is a print from Felix Gonzales-Torres and Christopher Wool which again arrests the viewers' curiosity while a framed silk Burberry scarf alludes to the success and style of UK fashion design.

On the dark walls of the study hangs an ivory plaster piece of art in a deep dark oak frame, it depicts the Thames as it flows through Chelsea with lines to demonstrate old area boundaries.

Interior photography is of the Study in The Explorer showhome and is indicative only

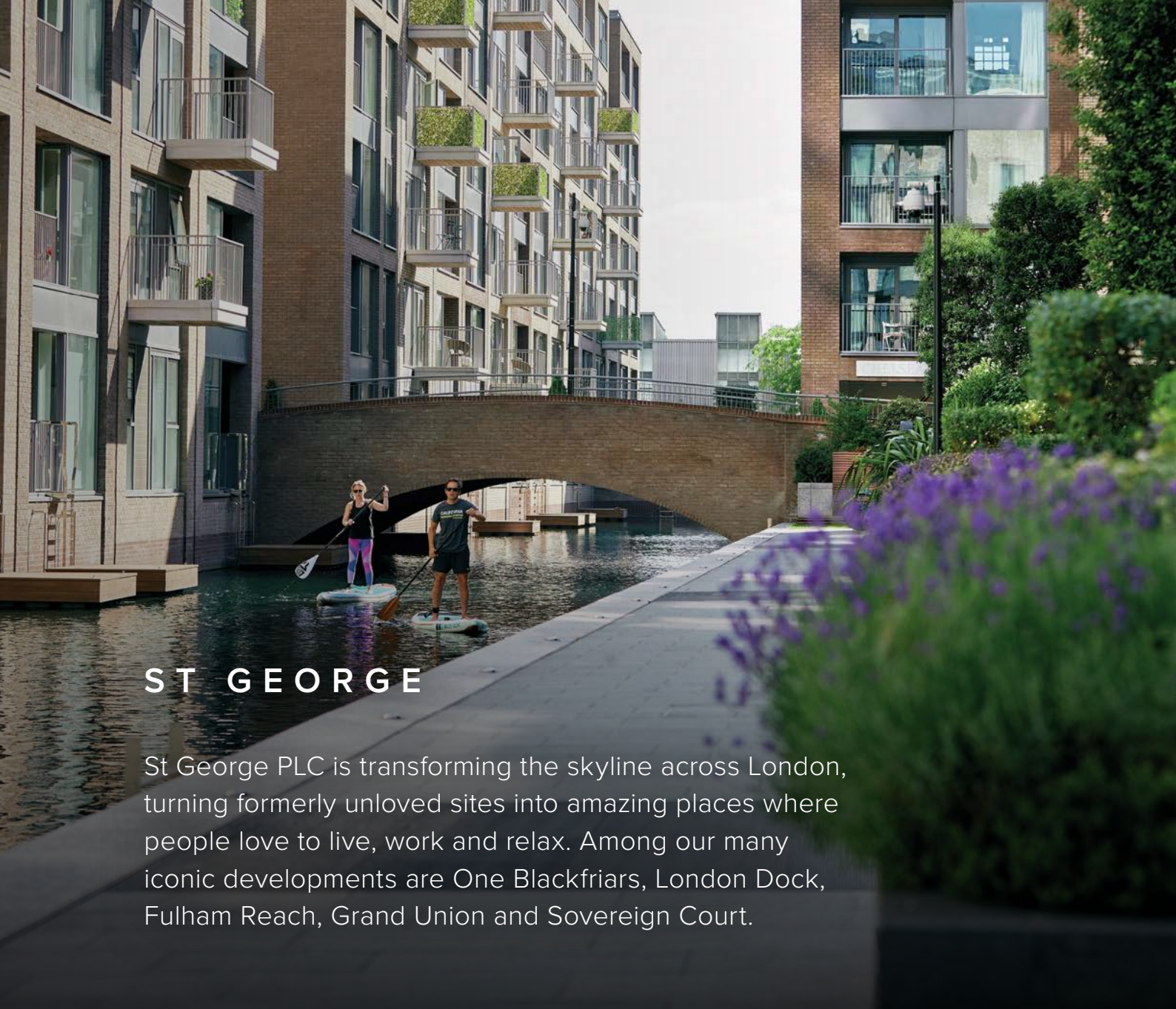


Interior photography is of the Bedroom in The Explorer showhome and is indicative only



An original set of nine Andy Warhol postcards depicting the illustrious Mick Jagger decorate a wall in bedroom 1, immediately resonating the art and music scene which was the drumming heartbeat of Chelsea in the sixties. The guest bedroom enhances that nostalgia by drawing on black and white photography by Cecil Beaton for Vogue magazine.

the drumming heartbeat of Chelsea in the sixties



ST GEORGE

St George PLC is transforming the skyline across London, turning formerly unloved sites into amazing places where people love to live, work and relax. Among our many iconic developments are One Blackfriars, London Dock, Fulham Reach, Grand Union and Sovereign Court.

ST GEORGE PROJECTS

St George PLC has built an impressive reputation and won awards for regenerating disused parts of the capital and transforming them into vibrant communities in attractive landscaped grounds, offering on-site facilities such as fitness suites, business centres, concierge service, shops, cafés and restaurants. St George PLC specialises in quality mixed-use regeneration schemes participating in the government's 'Constructing Excellence' agenda, and was the first residential developer to be granted 'The Queen's Award for Enterprise: Sustainable Development'.



CHELSEA CREEK SALES AND MARKETING SUITE

Chelsea Creek, 9 Park Street, London SW6 2FS

T +44 (0) 20 7610 9693

E sales@chelseacreek.co.uk

Click here to visit our website ➔



The information in this document is indicative and is intended to act as a guide only as to the finished product. Accordingly, due to the St George policy of continuous improvement, the finished product may vary from the information provided. It may not be possible to provide the exact materials as referred to in the brochure. In such cases a suitable alternative will be provided. St George reserves the right to make these changes as required. These particulars should not be relied upon as statements of fact or representations and applicants must satisfy themselves by inspection or otherwise as to their correctness. This information does not constitute a contract or warranty. The dimensions given on plans are subject to minor variations and are not intended to be used for carpet sizes, appliance sizes or items of furniture. Chelsea Creek and The Explorer are marketing names and will not necessarily form part of the approved postal address. Applicants are advised to contact St George to ascertain the availability of any particular property. Map is not to scale and shows approximate locations only. April 2022.

Purchasing uncompleted properties located outside Hong Kong is complicated and contains risk. You should review all relevant information and documents carefully. If in doubt, please seek independent professional advice before making a purchase decision. Planning permission number: 2018/02929/FUL. Borough/council issuing permission: London Borough of Hammersmith and Fulham. Acquiring interest: 999-year leasehold interest from June 2010.

CHELSEA CREEK

chelseacreek.co.uk

