

CAMDEN GOODS YARD

LONDON NW1



Your
NEIGHBOURHOOD



St George
Designed for life

CAMDEN
GOODS YARD
LONDON NW1

CONTENTS

2	<i>Introduction</i>	
4	<i>Your Neighbourhood</i>	
8	<i>Getting Around</i>	
10	<i>Green Spaces</i>	
16	<i>Entertainment</i>	
22	<i>KOKO</i>	
26	<i>Eating Out</i>	
32	<i>Boxpark Camden</i>	
34	<i>Bars</i>	
40	<i>Shopping Hotspots</i>	
46	<i>Leisure and Culture</i>	
52	<i>Attractions</i>	
60	<i>Contact</i>	

Welcome to **NW1**

A Place for Everyone

Camden Goods Yard places you amidst a community of unique shops, inviting restaurants, and cosy cafés. Stroll through charming streets, wander along scenic canal paths, and uncover hidden gems that capture the essence of local culture.

**A HARMONIOUS
BLEND OF CITY
AND NATURE**



A rich **HISTORY**

NW1 began as a Georgian suburb, and some of its elegant houses still stand. The neighbourhood was shaped by the canal and railway, attracting more residents, particularly artisans and professionals. In the 19th century, large shops and theatres added to the area's attractions, and by the mid-20th century, it had become a lively, cosmopolitan part of London—a hub for the creative arts, media, fashion, and music.

Waterside **LIVING**

Regent's Canal is a scenic waterway that spans approximately 13.8 kilometres (8.6 miles), connecting Paddington Basin in the west to Limehouse Basin in the east, and passing through charming areas like Little Venice, Regent's Park and Camden.

Named after the Prince Regent (later King George IV), the canal was originally constructed during the Industrial Revolution to facilitate the transport of goods into and out of London. However, with the rise of road and rail transport, its commercial significance declined. Today, Regent's Canal is celebrated for its peaceful, picturesque environment, offering opportunities for boating, walking, and cycling along its towpaths.

CONNECTIONS

You're on YOUR WAY

Camden Goods Yard is ideally situated, just a 6-minute walk from Chalk Farm Underground station and under 10 minutes from Kentish Town West and Camden Town stations. Further south, the redevelopment of Euston Station will establish the High-Speed Rail 2 terminus, offering direct connections to Birmingham, Manchester, and Leeds. Additionally, nearby King's Cross and St Pancras stations provide excellent international rail links.

Key Journey DISTANCES

KING'S CROSS
1.9
MILES

EUSTON
1.5
MILES

PADDINGTON
3.7
MILES

OXFORD CIRCUS
2.5
MILES

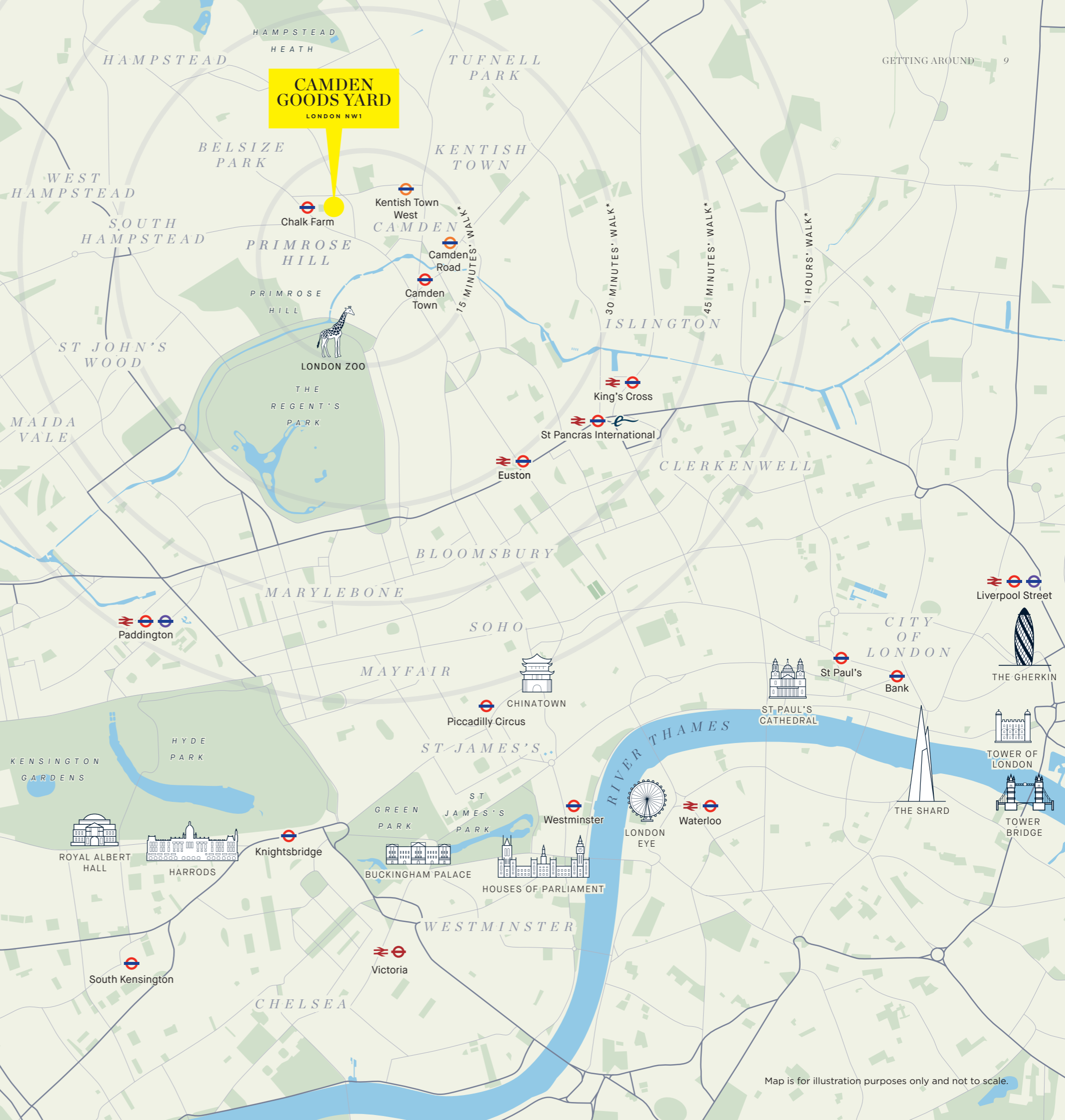
BANK
4.9
MILES

HEATHROW AIRPORT
19.6
MILES

Travel Information

	Euston	1.5 miles	1 stop
	King's Cross St Pancras International	1.9 miles	2 stops
	Hampstead	1.8 miles	3 stops
	Oxford Circus	2.5 miles	3 stops
	Bank	4.9 miles	6 stops
	Edgware Road	3.4 miles	7 stops
	Paddington	3.7 miles	8 stops
	Waterloo	4.1 miles	9 stops
	Heathrow Airport (Terminal 5)	19.6 miles	24 stops

*All travel and walking distances are approximate only. Source: Google Maps. Underground times calculated from Camden Town Station.



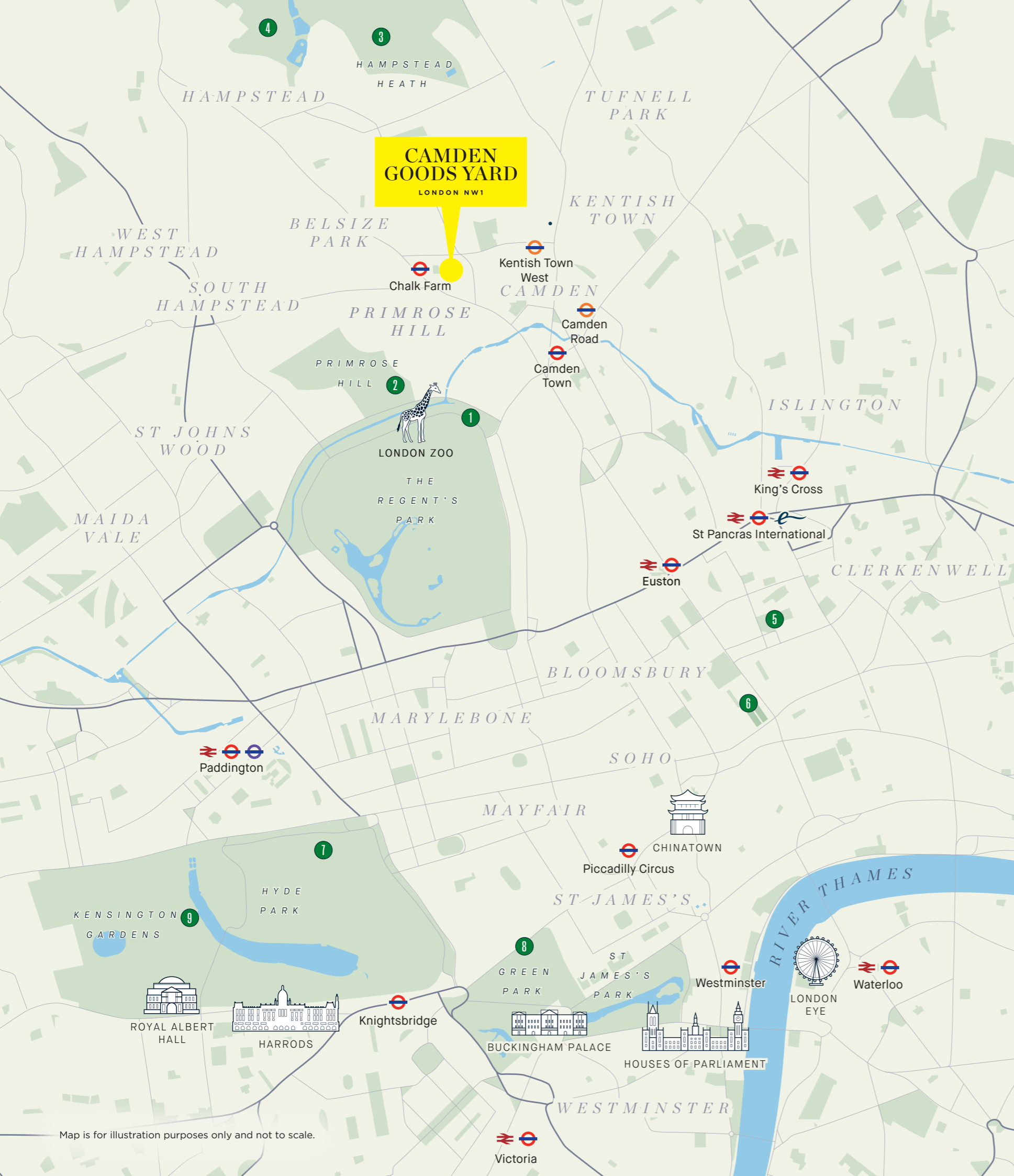
Map is for illustration purposes only and not to scale.



Green **SPACES**

*Find Your Oasis
in The City*

Camden Borough boasts the highest proportion of green spaces among all inner London boroughs. With Regent's Park—a Royal Park—right on its doorstep, it offers an ideal balance for a vibrant and nature-filled lifestyle.



Map is for illustration purposes only and not to scale.

GREEN SPACES

- 1

The Regent's Park
The Regent's Park
NW1 4NU
- 2

Primrose Hill
Primrose Hill
NW1 8UR
- 3

Hampstead Heath
Hampstead Heath
NW3 1BP
- 4

Golders Hill Park
North End Way
NW3 7HE
- 5

Coram's Field Park
93 Guilford Street
WC1N 1DN
- 6

Bloomsbury Square Gardens
14 Great Russell Street
Bloomsbury
SE1 1RQ
- 7

Hyde Park
Hyde Park
W2 2UH
- 8

Green Park
Constitution Hill
SW1A 2BJ
- 9

Kensington Gardens
West Carriage Drive
W2 2UH





Regent’s Park

The Regent’s Park
NW1 4NU



The park is a serene spot in busy Central London, featuring attractions such as the lake, Queen Mary’s Gardens with its stunning roses, and the Open Air Theatre—perfect on a balmy evening. Regent’s Canal crosses the park where you can take a boat trip past the Zoo or stroll the towpath from Camden to Little Venice.

Primrose Hill

Primrose Hill
NW1 8UR



Part of Regent’s Park, Primrose Hill is an the ideal spot to enjoy panoramic views across the city. At 63-metres above sea level, the crest of the hill is one of six protected viewpoints in London. Even the trees are kept low to avoid obscuring the views.



Golders Hill Park

North End Way
NW3 7HE



Golders Hill Park is a beautifully landscaped park located in North West London, adjacent to Hampstead Heath. It offers a peaceful escape from the city, with manicured flower gardens, cafes, rolling lawns, wooded nature trails and a zoo. Originally part of a private estate, the park was opened to the public in 1898 and has since become a popular spot for families and nature lovers.



Coram’s Fields

93 Guilford Street
WC1N 1DN



A vibrant 7-acre urban oasis exclusively for under-16s, it offers playgrounds, sports pitches, lawns, and a paddling pool. A safe haven for outdoor fun and relaxation in Central London.



Hampstead Heath

Hampstead Heath
NW3 1BP



A vast open space spanning 800 acres, Hampstead Heath includes diverse areas such as Parliament Hill and the grounds of Kenwood House. Between these landmarks are wild meadows, woods, and some spectacular views. For hardy swimmers, there are open-air bathing ponds.

ENTERTAINMENT

What's On?

Drama, jazz, soul, spoken word and stand-up comedy all feature in Camden's world-famous entertainment scene.

ENTERTAINMENT



Map is for illustration purposes only and not to scale.

- | | |
|--|--|
| <p>1 Junkyard Golf
Stables Market, Chalk Farm Road
NW1 8AB
W junkyardgolfclub.co.uk</p> <p>2 Camden Assembly
49 Chalk Farm Road, Chalk Farm
NW1 8AN
W camdenassembly.com</p> <p>3 London Waterbus Company
West Yard, Camden Market (Lock)
NW1 8AF
W londonwaterbus.com</p> <p>4 FEST Camden
Camden Stables Market, FEST
NW1 8AH</p> <p>5 Roundhouse
Chalk Farm Road, Chalk Farm
NW1 8EH
W roundhouse.org.uk</p> <p>6 Dingwalls
East Yard, 11 Camden Lock Place
NW1 8AL
W dingwalls.com</p> | <p>7 Electric Ballroom
184 Camden High Sreet
NW1 8QP
W electricballroom.co.uk</p> <p>8 Babylon Park
8 Castlehaven Street
NW1 8QU
W babylonpark.com</p> <p>9 The Jazz Café
5 Parkway
NW1 7PG
W thejazzcafelondon.com</p> <p>10 KOKO
1A Camden High Street
NW1 7JE
W koko.co.uk</p> <p>11 Regent's Park Open Air Theatre
The Regent's Park, Inner Circle
NW1 4NU
W openairtheatre.com</p> |
|--|--|



Regent's Park Open Air Theatre

Roundhouse

Chalk Farm Road, Chalk Farm
NW1 8EH

Wroundhouse.org.uk

A true Camden institution, Roundhouse has been a hub of creativity for 50 years. Live acts have included The Rolling Stones, David Bowie, The Ramones and Blondie. In 2006 it changed course to become a leading arts venue; showcasing drama, stand-up, poetry and – of course – music.



The Jazz Cafe

5 Parkway
NW1 7PG

Wthejazzcafelondon.com

One of London's most iconic music venues, where some of the biggest names in jazz and soul have performed over the last 30 years, as have local talents and rising stars.



Credit: @benmcquaide, image courtesy of @thejazzcafe



London Waterbus Company

West Yard
Camden Market (Lock)
NW1 8AF

Wlondonwaterbus.com

Explore London's charm aboard a Regent's Canal Waterbus! Glide between Camden Market and Little Venice unveiling the city's scenic waterways.



Camden Assembly

49 Chalk Farm Road
Chalk Farm
NW1 8AN

Wcamdenassembly.com

Formerly known as the Camden Barfly, Camden Assembly has been one of Camden's most important music venues for many years. Bands like Coldplay, Franz Ferdinand, and many others got their start here.



Junkyard Golf

Stables Market
Chalk Farm Road
NW1 8AB

Wjunkyardgolfclub.co.uk

Crazy golf, crazier cocktails, welcome to Camden's wildest golf course. 4 unique 9-hole courses, it's golf reinvented.



KOKO - OUR HOT PICK

KOKO the Iconic Music Venue

Steeped in history since its 1900 opening as a theatre, KOKO (formerly Camden Palace) is now a London music landmark. Hosting over 1,000 concerts annually, it offers a vibrant mix of live music and KOKO Electronic club nights, showcasing both established and up-and-coming artists across various genres. The venue's distinctive architecture and energetic atmosphere have cemented its place as a cultural icon within Camden's music scene.





The House **OF KOKO**

Members' Club

Tucked backstage, House of KOKO isn't your average members' club. Spread over four luxuriously appointed floors, it's a playground for the city's elite. Think sleek new restaurants, a rooftop retreat overlooking the city, and a recording studio for impromptu music sessions.

But that's just the tip of the iceberg. Hidden speakeasies and secret vinyl rooms pique curiosity, while exclusive access to members-only events enhances the sense of exclusivity. With over 50,000 square feet to explore, House of KOKO is a labyrinth of hidden gems, secret passageways, and concealed bars. House of KOKO isn't just a club; it's a captivating experience waiting to be discovered.



Café **KOKO**

A Lively Welcoming Hub

Hidden behind London's iconic KOKO music venue, this stylish and inviting café offers a menu designed by international chef Andreas Engberg, featuring delicious Italian small plates, pizzas, and cocktails. It's a vibrant hub of creative energy, boasting curated music and art alongside weekly live acts and DJ sets. It's no wonder celebrities like Stormzy and Nicki Minaj have been spotted here!

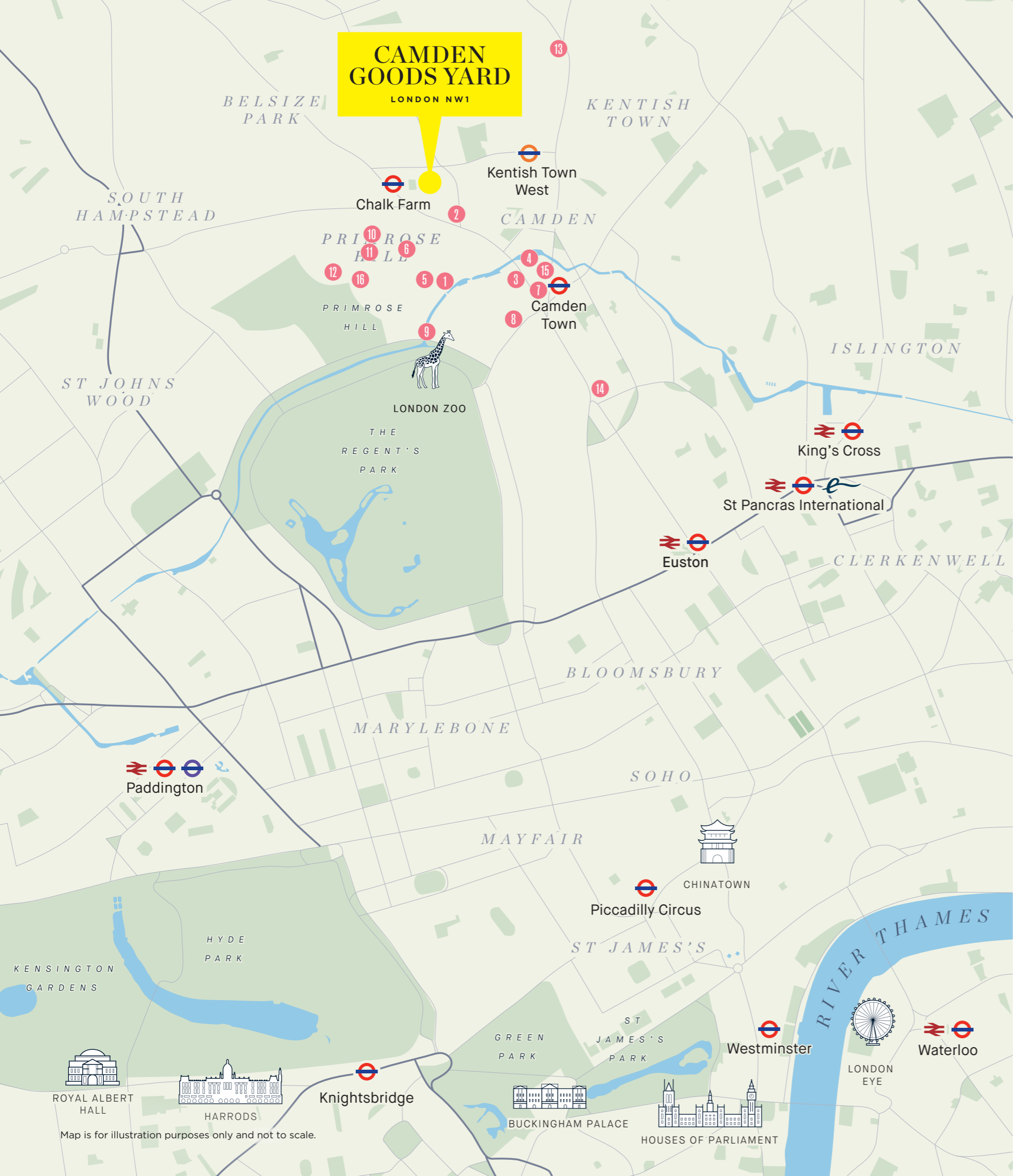


Eating **OUT**

World-Cuisine *Made Local*

From fine dining to casual brunches, and from quiet and elegant to lively and musical, the local eateries cater to every occasion, serving food from many countries and cuisines.

EATING OUT



- 1

Michael Nadra
42 Gloucester Avenue
NW1 8JD
W restaurant-michaelnadra.co.uk
- 2

Near & Far Camden
48 Chalk Farm Road
Camden NW1 8AJ
W nearandfarlondon.com/camden
- 3

Mildreds Camden
9 Jamestown Road
NW1 7BW
W mildreds.co.uk
- 4

Poppies Fish & Chips
30 Hawley Crescent
NW1 8NP
W poppiesfishandchips.co.uk
- 5

Primrose Bakery
69 Gloucester Avenue,
NW1 8LD
W primrose-bakery.co.uk
- 6

The Lansdowne
90 Gloucester Avenue
NW1 8HX
W thelansdownepub.co.uk
- 7

Daphne
83 Bayham Street
NW1 0AG
- 8

Namaaste Kitchen
64 Parkway
NW1 7AH
W namaastekitchen.co.uk
- 9

Feng Shang Princess
Cumberland Basin, Prince Albert Road
NW1 7SS
W fengshang.co.uk
- 10

Greenberry Cafe
101 Regent's Park Road
NW1 8UR
W greenberrycafe.co.uk
- 11

Lemonia
89 Regent's Park Road
NW1 8UY
W lemonia.co.uk
- 12

It's Bagels
65 Regent's Park Road
NW1 8XD
W itsbagels.com
- 13

The Parakeet
256 Kentish Town Road
NW5 2AA
W theparakeetpub.com
- 14

Café Koko
74 Crowndale Road
NW1 1TP
W cafe-koko.co.uk
- 15

Boxpark
198 Camden High Street
NW1 8QP
W boxpark.co.uk
- 16

Arvo
57 Regent's Park Road
NW1 8XD

HOT SPOTS IN CAMDEN'S MARKETS

- Camden Tea Company

Chin Chin Ice cream

Funky Chips
- Half Hitch Distillery

Hans & Gretel

Humble Crumble
- The Cheese Wheel

Three Uncles

Yorkshire Burrito

Michael Nadra

42 Gloucester Avenue,
NW1 8JD

Wrestaurant-michaelnadra.co.uk

Chef Michael Nadra’s restaurant is tucked away in Primrose Hill, just a short stroll from Regent’s Canal and Camden. It offers modern British food in a unique space, complete with a bright conservatory and bar, an intimate fireplace, Grade II listed horse tunnel and an outdoor terrace.



Boxpark

198 Camden High Street,
NW1 8QP

Wboxpark.co.uk

A trendy, pop-up-style retail and dining destination housed in a unique space made from repurposed shipping containers. Known for its vibrant atmosphere, it features an eclectic mix of food stalls, independent boutiques, and entertainment venues.



Credit: Michael Nadra



Credit: @sibev / Simon Bevan

Humble Crumble

Unit 739, Camden Market,
Chalk Farm,
NW1 8AH

Whumble-crumble.com

Humble Crumble reimagines the classic British dessert, offering both hot and iced options with an endless supply of custard! Customise your fruit and crumble ratio and discover why this Camden hot spot is a favourite among sweet-toothed Londoners.



The Parakeet

256 Kentish Town Road,
NW5 2AA

Wtheparakeetpub.com

The Parakeet in Kentish Town is a stylish gastropub known for its contemporary take on British cuisine, crafted with seasonal and locally sourced ingredients. Housed in a beautifully restored Victorian building with a modern interior with a welcoming atmosphere.



Poppies

30 Hawley Crescent,
NW1 8NP

Wpoppiesfishandchips.co.uk

Poppies is renowned for its authenticity, and it’s little wonder, with born-and-bred East End proprietor Pat ‘Pop’ Newland at the helm. Pop’s career in the fish and chip business started in 1952 when, at the age of 11, he got a job on Roman Road cutting up copies of The Daily Mirror to wrap fish and chips in.



Primrose Bakery

69 Gloucester Avenue,
NW1 8LD

Wprimrose-bakery.co.uk

A popular bakery and family-run business where everything is hand iced and baked in small batches to really give the essence of simple old fashioned baking.



Feng Shang Princess

Cumberland Basin, Prince Albert Road,
NW1 7SS

Wfengshang.co.uk

An exquisite floating Chinese Restaurant serving outstanding food, fine wine, cocktails and Champagne, all set in the magnificence of Regent’s Park.



BOXPARK

EAT.
DRINK.
PLAY.

BOXPARK

Spotlight on
**BOXPARK
 CAMDEN**

Located on Camden High Street, Boxpark Camden is an eco-friendly and community-focused destination that opened its doors in September 2024. Spanning three floors, this vibrant venue is home to 60 independent food and retail traders, offering a dynamic mix of culinary delights and unique shopping experiences.

Visitors can savor a diverse array of street food from renowned vendors such as Yorkshire Burrito, Black Bear Burger, Poptata, and Philippe Conticini, celebrated for his viral giant croissant.

Whether you're a local or a visitor, Boxpark Camden provides a distinctive blend of food, fashion, and entertainment, capturing the very essence of Camden's rich cultural tapestry.



BARS

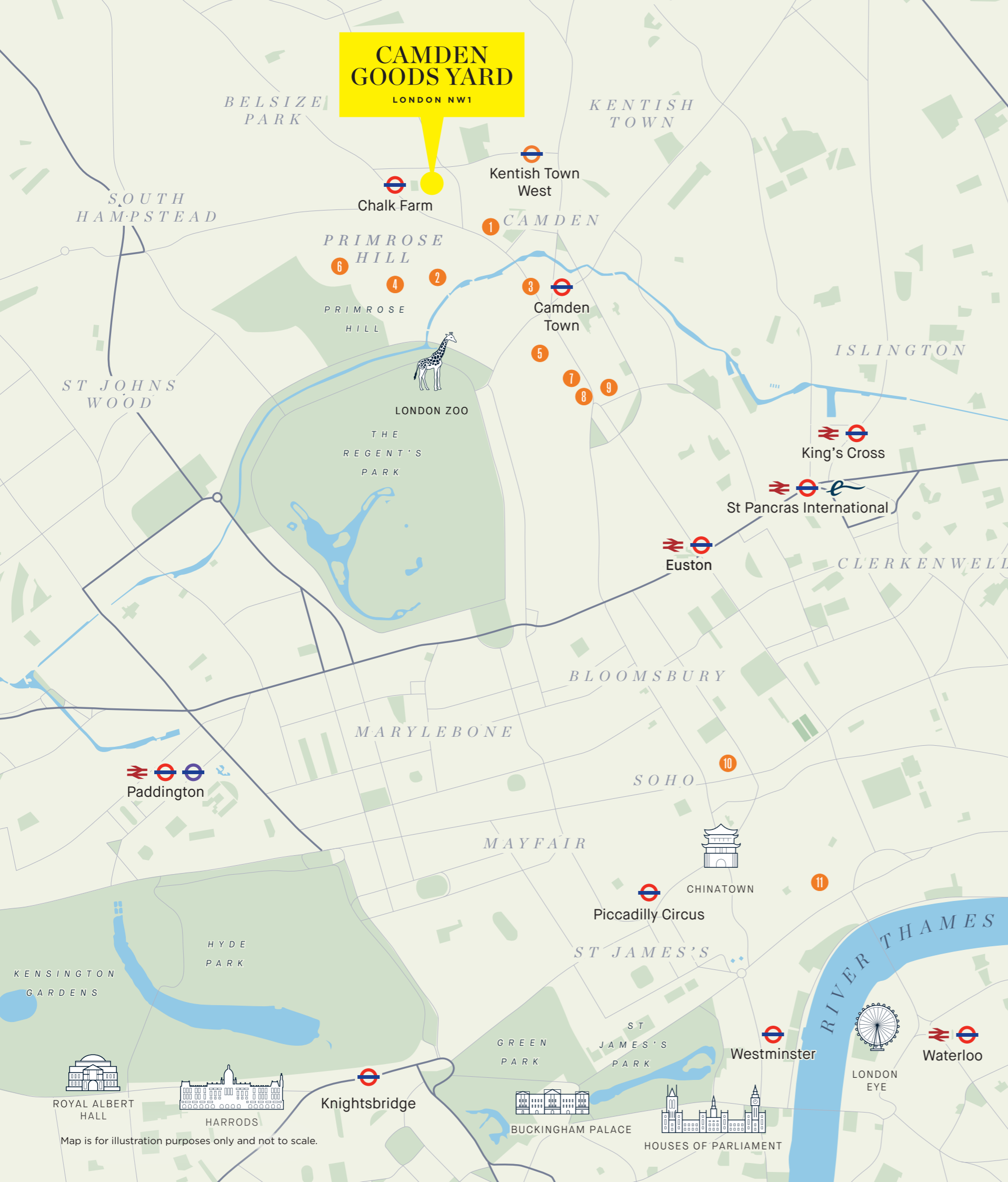
Pour Yourself a Great Night

Camden and Primrose Hill are renowned for their vibrant social scene, offering a range of spots perfect for every occasion—from lively gatherings to sophisticated evenings out, where you can enjoy everything from refreshing mocktails to delicious cuisine.



BARS

- | | |
|--|--|
| <p>1 Camden Assembly
49 Chalk Farm Road, Chalk Farm
NW1 8AN
W camdenassembly.com</p> <p>2 The Engineer
65 Gloucester Avenue, Chalk Farm
NW1 8JD
W theengineerprimrosehill.co.uk</p> <p>3 The Lucky Club
North Stables Yard, Chalk Farm Road
NW1 8AH
W theluckyclub.com</p> <p>4 The Princess of Wales
22 Chalcot Road
NW1 8LL
W lovetheprincess.com</p> <p>5 The Blues Kitchen
111-113 Camden High Street
NW1 7JN
W theblueskitchen.com/camden</p> <p>6 The Queen's
49 Regent's Park Road
NW1 8XD
W thequeensprimrosehill.co.uk</p> <p>7 Simmons Bar
7 Camden High Street
NW1 7JE
W simmonsbar.co.uk</p> | <p>8 BYOC
11-13 Camden High Street
Camden Town
NW1 7JE
W byoc.co.uk</p> <p>9 Café KOKO
74 Crowndale Road
NW1 1TP
W cafe-koko.co.uk</p> <p>10 The Coral Room
16-22 Great Russell Street
WC1B 3NN
W thecoralroom.co.uk</p> <p>11 Blame Gloria
20 Bedford Street
WC2E 9HP
W blamegloria.co.uk</p> |
|--|--|



BARS

The Queen's

49 Regent's Park Road,
NW1 8XD

Wthequeensprimrosehill.co.uk

Located just yards away from Primrose Hill, The Queen's offers locals and visitors alike seasonal British food alongside and extensive drinks list.



Travel times are approximate only. Source: Google Maps.
Underground times calculated from Camden Town Station.



The Blues Kitchen

111-113 Camden High Street,
NW1 7JN

Wtheblueskitchen.com

The Blues Kitchen serves up live music, cocktails and New Orleans style food which includes mouth-watering dishes such as cajun popcorn squid, red pepper and bean chilli, St Louis pork ribs and hot chicken buffalo sandwich.



The Lucky Club Camden

The Terrace, North Stables Yard,
Camden Market,
NW1 8AH

Wtheluckyclub.com

Located atop the historic North Yard of Camden Market, The Lucky Club is a tropical rooftop oasis serving food and drinks inspired by Mexico.



BYOC

11-13 Camden High Street, Camden Town,
NW1 7JE

Wbyoc.co.uk

BYOC Camden is a cosy cocktail bar that sells no alcohol. Inspired by the Prohibition-era speakeasy and the birth of cocktail culture in the 1920s, patrons bring spirits of their choice. A booking guarantees seats and the personal attention of a first class mixologist who creates unique cocktails using the finest quality syrups, bitters, purées, herbs, fruits and spices. Many of these "secret" ingredients are prepared from scratch.

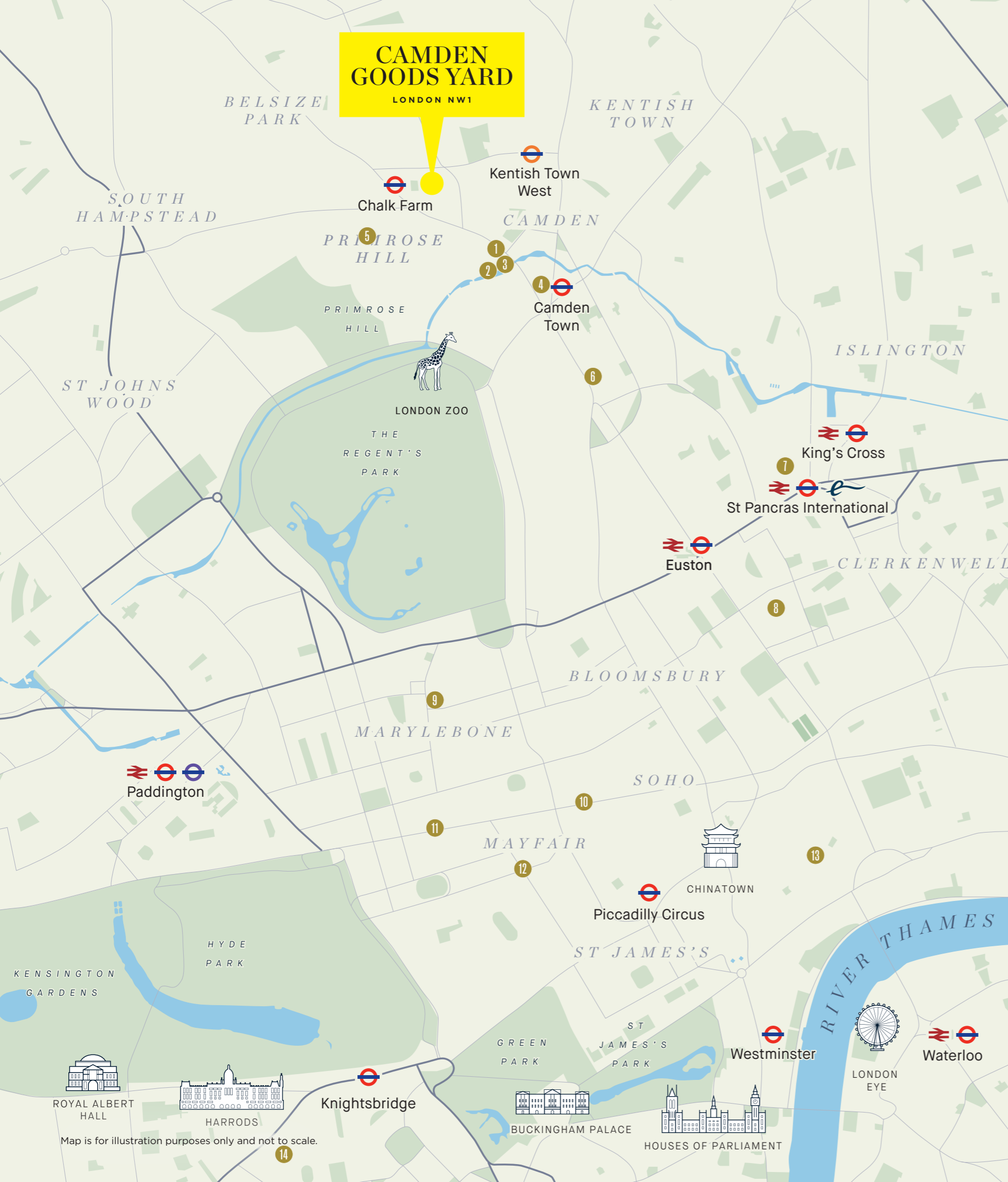




Shopping **HOTSPOTS**

Keeping it Local

You'll find numerous shopping destinations just a short walk or tube ride away. Camden Town is famous for its lively markets, while Primrose Hill boasts a delightful selection of fashion boutiques, charming coffee shops and convenience stores.



SHOPPING HOTSPOTS

- 1 Stables Market**
842 Chalk Farm Road
NW1 8BF
W camdenmarket.com

2 Camden Market
Camden Lock Market
Unit 215—216 Chalk Farm Road
NW1 8AF
W camdenmarket.com

3 Camden Lock Village
54-56 Camden Lock Place
NW1 8AF

4 Buck Street Market
192, 198 Camden High Street
NW1 8QP
W buckstreet.market

5 Primrose Hill
160 Regent's Park Road
NW1 8XN
W pressprimrosehill.com

6 Camden High Street
22 Camden High Street
NW1 0JH
W camden.gov.uk

7 Coals Drop Yard
Stable Street
NIC 4DQ
W kingscross.co.uk/coal-drops-yard
- 8 Brunswick Centre**
The Brunswick
WC1N 1BS
W brunswick.co.uk

9 Marylebone Village
Marylebone High Street

10 Oxford Circus
Oxford Street, Soho
W1D 1BS
W oxfordstreet.co.uk

11 Selfridges
400 Oxford Street
W1C 1JS
W selfridges.com

12 Bond Street
Bond Street
W1S 1SP
W bondstreet.co.uk

13 Covent Garden
Covent Garden
WC2E 8RF
W coventgarden.london

14 Harrods
Brompton Road
SW1X 7XL
W harrods.com

SHOPPING HOTSPOTS

Oxford Circus

Oxford Street, Soho
W1D 1BS

Woxfordstreet.co.uk

Two of London's best known shopping streets. Oxford Street is famous for Selfridges and John Lewis. Regent Street is lined with shops offering fashion, technology, jewellery, sportswear, accessories, as well as the quirky Liberty store and Hamley's toy shop.



Camden Market

1 Camden Lock Market
Unit 215 - 216
Chalk Farm Road, NW1 8AF

Camden Market has over 1,000 shops, stalls, bars and cafés. It was one of London's first crafts and antiques markets, and is still the principle market for crafts. This is the place to choose handmade, original gifts and souvenirs.



Coals Drop Yard

Stable St,
NIC 4DQ



King's Cross's must-visit shopping and dining destination offers over 50 unique shops, cafés, bars and restaurants housed in charming brick arches and cobbled streets. Independent finds meet big names, all steps from King's Cross and St Pancras stations.



Marylebone Village

Marylebone High Street,
W1U 4QF



Located in the heart of central London, Marylebone Village charms with chic boutiques and upscale eateries lining its high street. Unwind in this elegant area, home to the world-famous Wallace Collection and iconic museums like Madame Tussauds and Sherlock Holmes.



Primrose Hill

Regent's Park Road ,
W1D 1BS



Primrose Hill has an upmarket village vibe, where the typical shops are designer boutiques, beauty salons, delicatessens, chic florists, furniture and homeware shops and independent bookstores.

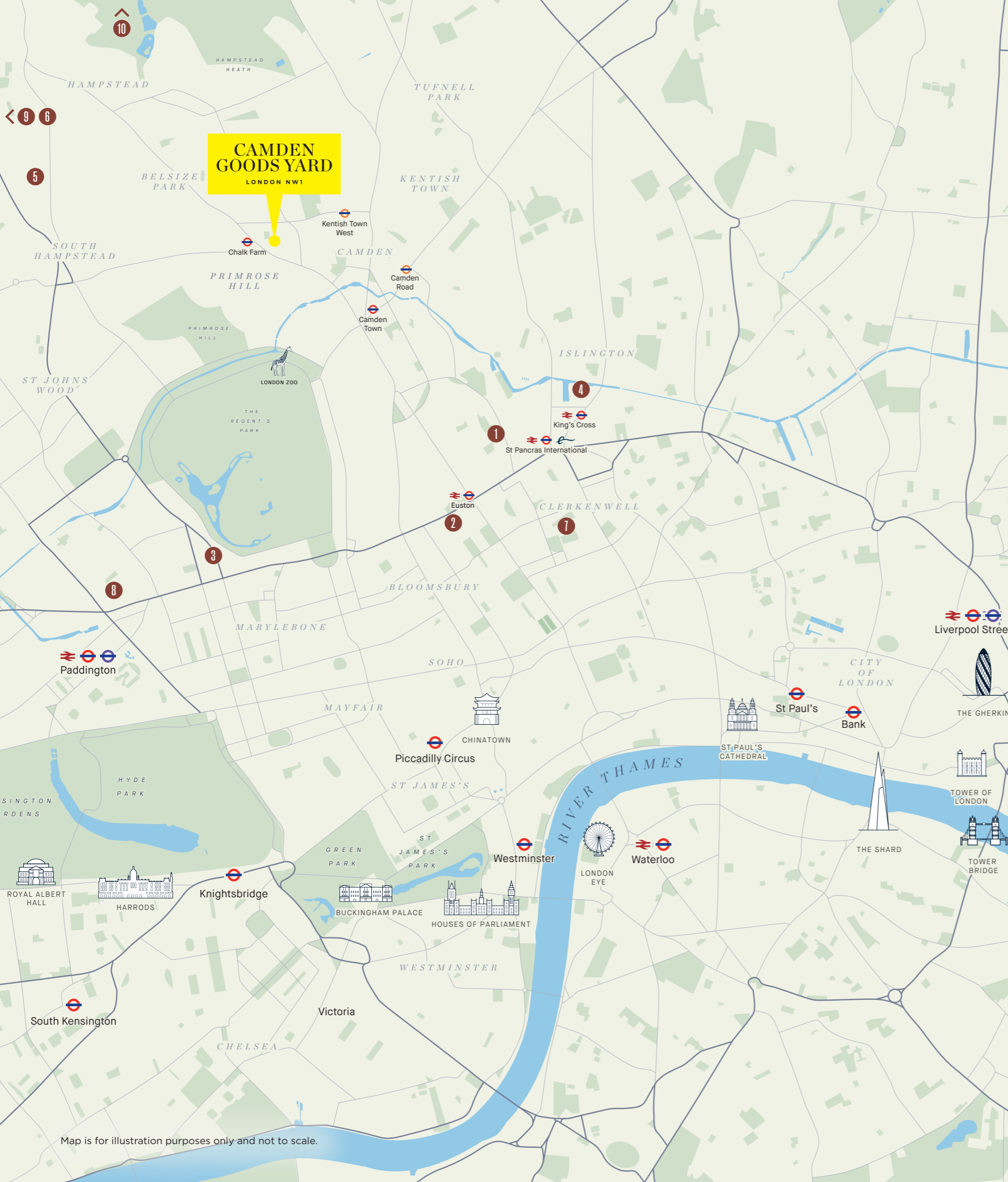




Leisure and **CULTURE**

Revel in Culture

Indulge in your passion for culture by visiting the numerous museums and art galleries on your doorstep.



Map is for illustration purposes only and not to scale.

LEISURE AND CULTURE

LEISURE AND CULTURE 49

- | | |
|---|--|
| 1 Francis Crick Institute
1 Midland Road
NW1 1AT
W crick.ac.uk | 7 The Foundling Museum
40 Brunswick Street
WC1N 1AZ
W foundlingmuseum.org.uk |
| 2 Wellcome Collection Museum
183 Euston Road
NW1 2BE
W wellcomecollection.org | 8 Lisson Gallery
27 Bell Street
NW1 5BY
W lissongallery.com |
| 3 The Sherlock Holmes Museum
221b Baker Street
NW1 6XE
W sherlock-holmes.co.uk | 9 Camden Arts Centre
Arkwright Road
NW3 6DG
W camdenartcentre.org |
| 4 London Canal Museum
New Wharf Road
N1 9RT
W canalmuseum.org.uk | 10 Kenwood House
Hampstead Lane
NW3 7RJ
W english-heritage.org.uk |
| 5 Freud Museum
20 Maresfield Gardens
NW3 5SX
W freud.org.uk | |
| 6 Jewish Museum London
129-131 Albert Street
NW1 7NB
W jewishmuseum.org.uk | |

LEISURE AND CULTURE



Camden Arts Centre

50 Arkwright Road
NW3 6DG

Wcamdenartcentre.org

Camden Arts Centre is the place to see, to make, to learn and to talk about contemporary art. It combines historic architecture with open, modern spaces, a café, bookshop and secluded garden with free entry for all.



Wellcome Collection Museum

183 Euston Road
NW1 2BE

Wwellcomecollection.org

A free museum and library exploring health and human experience. Through exhibitions, collections, live programming, digital, broadcast and publishing; Wellcome Collection Museum create opportunities for people to think deeply about the connections between science, medicine, life and art.



Lisson Gallery

27 Bell Street
NW1 5BY

Wlissongallery.com

One of the most influential and longest-running international contemporary art galleries in the world. The Lisson Gallery supports and promotes the work of more than 60 international artists across two spaces in London, three in New York and one in Shanghai, as well as forthcoming galleries in Beijing and Los Angeles.



London Canal Museum

New Wharf Road
N1 9RT

Wcanalmuseum.org.uk

See inside a narrowboat cabin, learn about the history of London's canals, about the cargoes carried, the people who lived and worked on the waterways and the horses that pulled their boats. This unique waterways museum, the only one in London, is housed in a former ice warehouse built in about 1863.



The Freud Museum

20 Maresfield Gardens
NW3 5SX

Wfreud.org.uk

A museum at what was the home of Sigmund Freud (the founder of psychoanalysis) and his family when they escaped Austria following the Nazi annexation in 1938. The centrepiece of the museum is Freud's study and therapy couch which is preserved just as it was during his lifetime.



The Jewish Museum

129-131 Albert Street
NW1 7NB

Wjewishmuseum.org.uk

The Jewish Museum has existed in Camden for over 90 years and aims to tell the story of the history and heritage of Jewish people in Britain through universal themes of migration, family, faith and culture. This is a must see for any visitor to Camden Town.





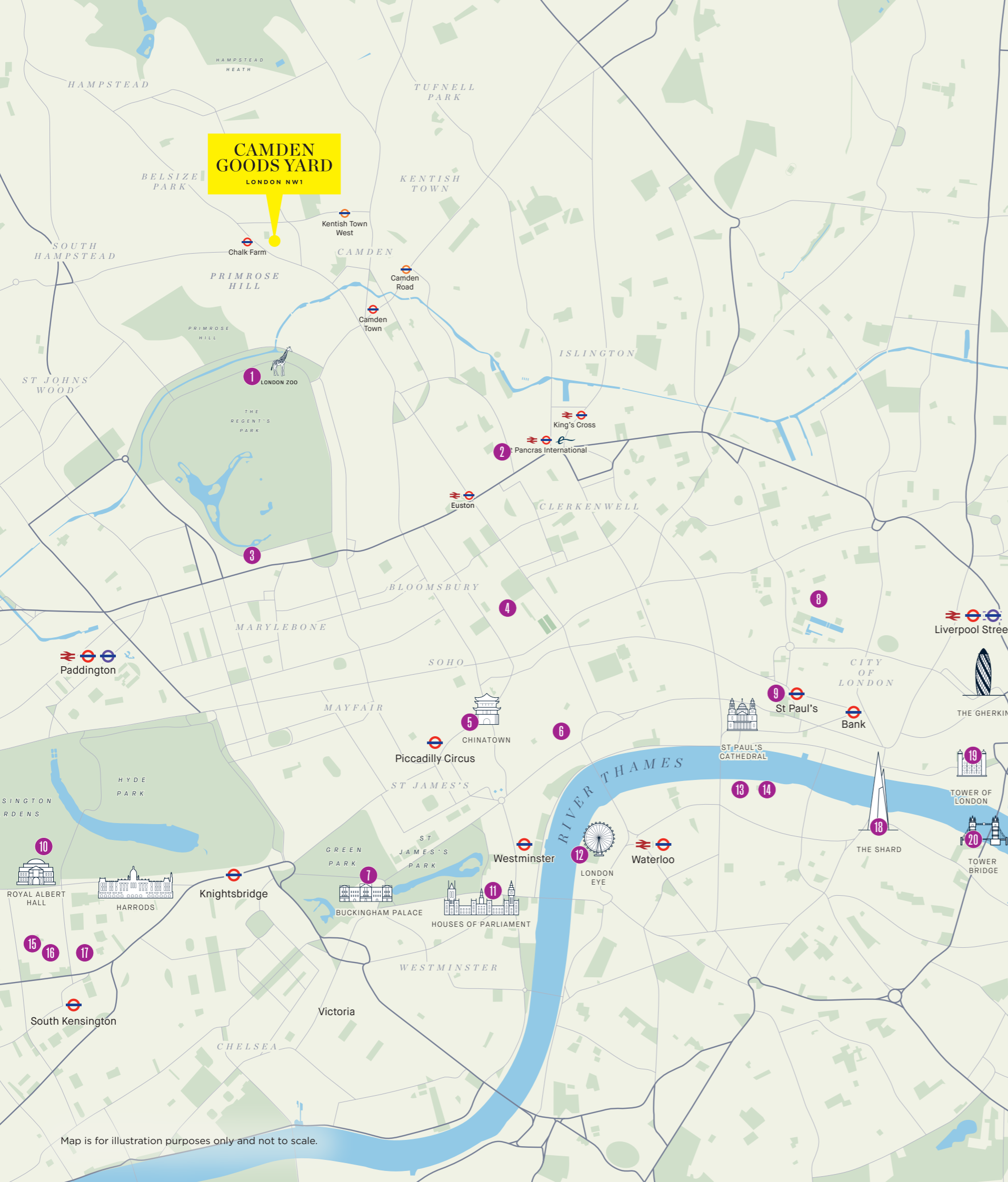
The London Eye.

ATTRACTIONS

London's Finest

It's hard to summarise London in just a few attractions, but these are some of the ones that continue to be admired by visitors from all over the world.

ATTRactions



- 1 **London Zoo**
Regent's Park
NW1 4RY
W londonzoo.org
- 2 **British Library**
96 Euston Rd
NW1 2DB
W bl.uk
- 3 **Madame Tussauds**
Marylebone Road
NW1 5LR
W madametussauds.com/london
- 4 **British Museum**
Great Russell Street
WC1B 3DG
W britishmuseum.org
- 5 **Chinatown**
Gerrard Street
W1D 5PT
W chinatown.co.uk
- 6 **Royal Opera House**
Bow St
WC2E 9DD
W roh.org.uk
- 7 **Buckingham Palace**
Westminster
SW1A 1AA
W rct.uk/visit/buckingham-palace
- 8 **Barbican**
Silk St, Barbican
EC2Y 8DS
W barbican.org.uk
- 9 **St Paul's Cathedral**
St Paul's Churchyard
EC4M 8AD
W stpauls.co.uk
- 10 **Royal Albert Hall**
Kensington Gore, South Kensington
SW7 2AP
W royalalberthall.com
- 11 **Westminster Abbey**
20 Deans Yard
SW1P 3PA
W westminster-abbey.org

- 12 **London Eye**
Riverside Building, County Hall
SE1 7PB
W londoneye.com
- 13 **Tate Modern**
Bankside
SE1 9TG
W tate.org.uk
- 14 **Shakespeare's Globe**
21 New Globe Walk
SE1 9DT
W shakespearesglobe.com
- 15 **Natural History Museum**
Cromwell Road
SW7 5BD
W nhm.ac.uk
- 16 **Science Museum**
Exhibition Road, South Kensington
SW7 2DD
W sciencemuseum.org.uk
- 17 **Victoria and Albert Museum**
Cromwell Road
SW7 2RL
W vam.ac.uk
- 18 **The Shard**
32 London Bridge Street
SE1 9SG
W theviewfromtheshard.com
- 19 **Tower of London**
EC3N 4AB
W hrp.org.uk
- 20 **Tower Bridge**
Tower Bridge Rd
SE1 2UP
W towerbridge.org.uk



Spotlight on **LONDON ZOO**

Nestled within the leafy expanse of Regent's Park, London Zoo is one of the capital's most iconic attractions and a global leader in wildlife conservation. Home to over 14,000 animals across hundreds of species, the zoo offers unforgettable experiences for families, schools, and visitors of all ages. From walk-through rainforest adventures to up-close encounters with lions, tigers, and penguins, a world of discovery is right on your doorstep.

Sumatran Tiger. Image is indicative only.

ATTRACTIONS

Madame Tussauds

Marylebone Road
NW1 5LR

W madametussauds.com/london

Madame Tussauds combines glitz and glamour with incredible heritage. There are over 150 wax figures on display at any one time. Visit to get up close and personal to some of your favourite icons and famous faces.



British Museum

Great Russell Street
WC1B 3DG

W britishmuseum.org

Without doubt, one of the world's greatest museums. Its star exhibits include the Rosetta Stone, Parthenon Marble Sculptures, the Portland Vase and the impressive collection of Egyptian mummies. The covered-in courtyard around the Reading Room is a beautiful, inspiring space.



Barbican

Silk Street, Barbican
EC2Y 8DS

W barbican.org.uk

This unique venue presents a diverse range of art, music, theatre, dance, film and creative learning events. The Barbican provides a vibrant London home for established international artists and also help commissioners to launch young performers. As well as performances, the Barbican hosts workshops, talks and debates.

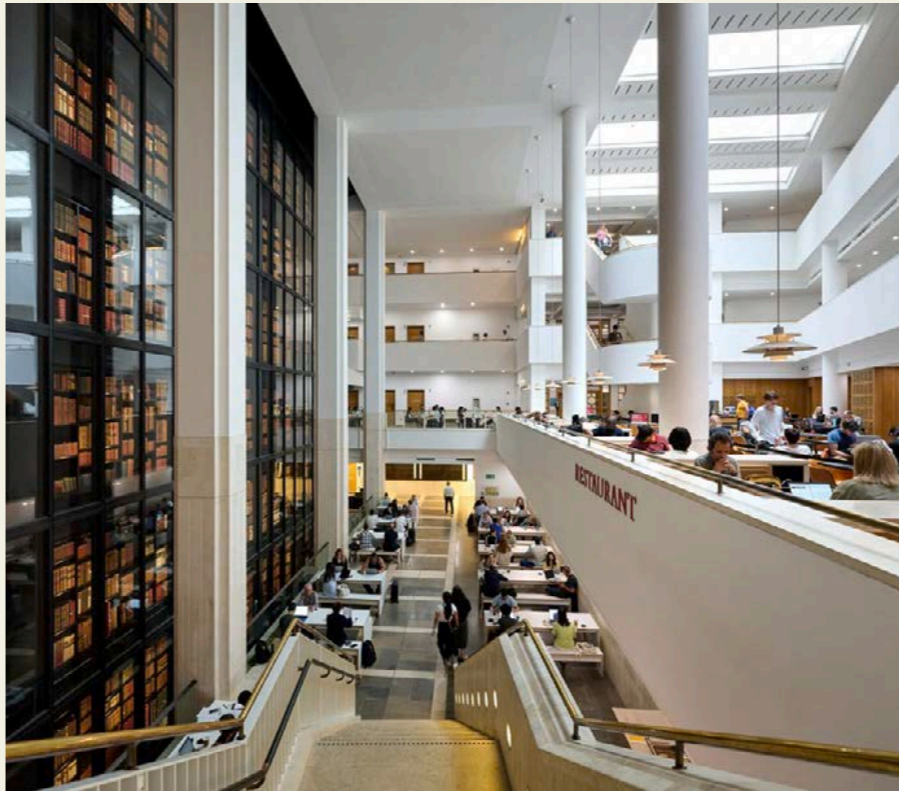


The British Library

96 Euston Road
NW1 2DB

W bl.uk

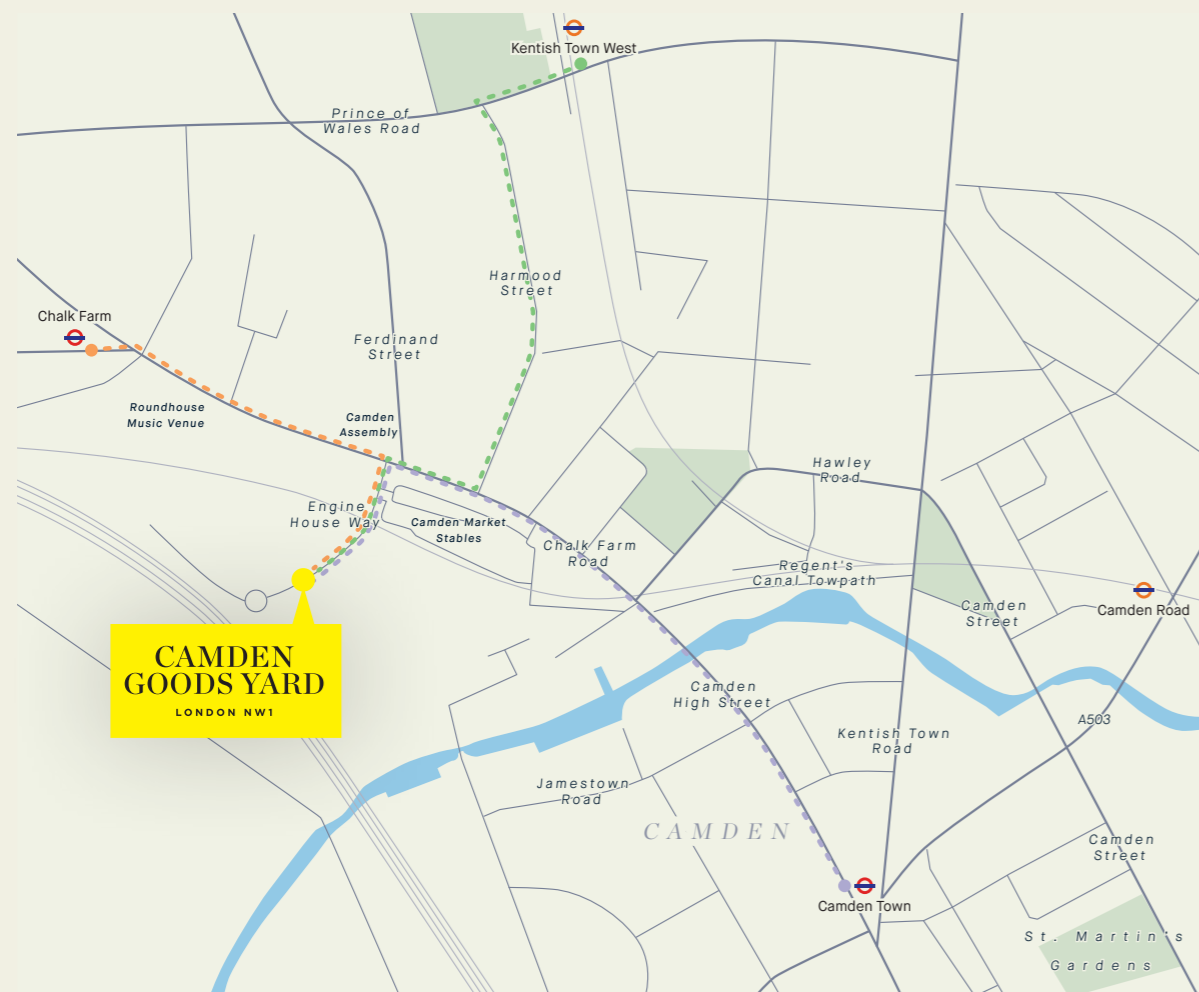
The British Library is the national library of the United Kingdom and is one of the largest libraries in the world. It is estimated to contain between 170 and 200 million items from spanning across several countries.



CONTACT

Camden Goods Yard Marketing Suite,
Chalk Farm Road, NW1 8EH

sales@camdengoodsyard.co.uk
+44 (0)203 040 7000



Map is for illustration purposes only and not to scale.

CAMDENGGOODSYARD.CO.UK