

# CAMDEN GOODS YARD

LONDON NW1

# YOUR NEIGHBOURHOOD





St George  
Designed for life





# CONTENTS.

2	<a href="#">Introduction</a>	
4	<a href="#">Your Neighbourhood</a>	
10	<a href="#">Getting Around</a>	
12	<a href="#">Green Spaces</a>	
18	<a href="#">Entertainment</a>	
24	<a href="#">KOKO</a>	
28	<a href="#">Eating Out</a>	
34	<a href="#">Bars</a>	
40	<a href="#">Shopping Hotspots</a>	
46	<a href="#">Attractions</a>	
52	<a href="#">Leisure and Culture</a>	
58	<a href="#">Contact</a>	

# WELCOME TO CAMDEN.



## A Place for Everyone

---

The urban spirit of Camden Town,  
the bohemian chic of Primrose  
Hill, the airy green acres of  
Regent's Park; all facets of NW1,  
your neighbourhood and the  
setting for Camden Goods Yard.



# CAMDEN MARKET

## A RICH HISTORY.

### The Making of Camden Town

Camden Town started life as a Georgian suburb and some of its elegant houses still stand. The neighbourhood was shaped by the canal and the railway, attracting more residents, particularly the artisans and professionals. In the 19th century, big shops and theatres added to Camden Town's attractions and by the mid 20th century it had become a lively, cosmopolitan part of London; a hub for the creative arts, media, fashion and music.



# WATERSIDE LIVING.

## Regent's Canal

This waterway is something of a hidden oasis, cutting 8½ miles across London and revealing many delights along the way. At Little Venice, colourful narrow boats – some of them cafés – are moored in the canal basin.

The canal runs through Regent's Park, where passengers can get a private view of the iconic aviary in ZSL London. In Camden, it arcs North of the busy town centre, passing the market stalls and craft shops.



# CULTURE.

## Learn and Be Inspired

London's many cultural highlights include world famous museums, galleries, libraries and concert halls.





# CONNECTIONS.

## You're on Your Way

The nearest Tube station to Camden Goods Yard, Chalk Farm, is a 6-minute walk while Camden Town is only 9 minutes. Both in Zone 2 and on the Northern line and also part of the Night Tube service, which runs Friday and Saturday nights; excellent if you are travelling into the West End for the theatre, drinks or dinner.

## Key Journey Distances



## Travel Information

	Euston	1.5 miles	1 stop
	King's Cross St Pancras International	1.9 miles	2 stops
	Hampstead	1.8 miles	3 stops
	Oxford Circus	2.5 miles	3 stops
	Bank	4.9 miles	6 stops
	Edgware Road	3.4 miles	7 stops
	Paddington	3.7 miles	8 stops
	Waterloo	4.1 miles	9 stops
	Heathrow Airport (Terminal 5)	19.6 miles	24 stops



\*All travel and walking distances are approximate only. Source: Google Maps. Underground times calculated from Camden Town Station.

Map is for illustration purposes only and not to scale.





# GREEN SPACES.

## Find Your Oasis in The City

London is one of the world's greenest capital cities with 47% of the city dedicated to green open spaces\*.

\*Source: Savills.





Map is for illustration purposes only and not to scale.

**1 The Regent's Park**

The Regent's Park  
NW1 4NU

**2 Primrose Hill**

Primrose Hill  
NW1 8UR

**3 Rochester Terrace Gardens**

Rochester Terrace, Canteloves  
NW1 9JN

**4 Camden Square Gardens**

Camden Square  
NW1 9UY

**5 Canteloves Gardens**

234 Camden Road  
NW1 9BY

**6 Hampstead Heath**

Hampstead Heath  
NW3 1BP

**7 Golders Hill Park**

West Heath Ave, London  
NW11 7QP

**8 Coram's Field Park**

93 Guilford Street  
WC1N 1DN

**9 Bloomsbury Square Gardens**

14 Great Russell Street  
Bloomsbury  
SE1 1RQ

**10 Hyde Park**

Hyde Park  
W2 2UH

**11 Green Park**

Constitution Hill  
SW1A 2BJ

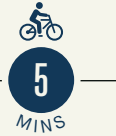
**12 Kensington Gardens**

West Carriage Drive  
W2 2UH





The Regent’s Park



The Regent’s Park  
NW1 4NU

The park is a serene spot in busy Central London, whose attractions include the lake, Queen Mary’s Gardens with its amazing roses, and the Open Air Theatre, perfect on a balmy evening. Regent’s Canal crosses the park where you can take a boat trip past the Zoo, or stroll the towpath from Camden to Little Venice.

Primrose Hill



Primrose Hill  
NW1 8UR

Part of Regent’s Park, Primrose Hill is an the ideal spot to enjoy the panoramic views across the city. 63-metres above sea level and the crest of the hill is one of six protected viewpoints in London. Even the trees are kept low so as to not obscure the views.



Hyde Park



Hyde Park  
W2 2UH

Set right in the heart of London, Hyde Park offers both world-class events and concerts together with plenty of quiet places to relax and unwind. Brave an open water swim in the Serpentine, have a go at tennis, horse riding or join the many joggers enjoying the open air.



Coram’s Fields



93 Guilford Street  
WC1N 1DN

A vibrant 7-acre urban oasis in King’s Cross, Camden. Exclusively for under-16s, it offers playgrounds, sports pitches, lawns, and a paddling pool. A safe haven for outdoor fun and relaxation in central London.



Hampstead Heath



Hampstead Heath  
NW3 1BP

A huge open space spanning 800 acres, consisting of many diverse areas such as Parliament Hill and the grounds of Kenwood House. In between are wild meadows and woods and some spectacular views. For hardy swimmers there are open air bathing ponds.





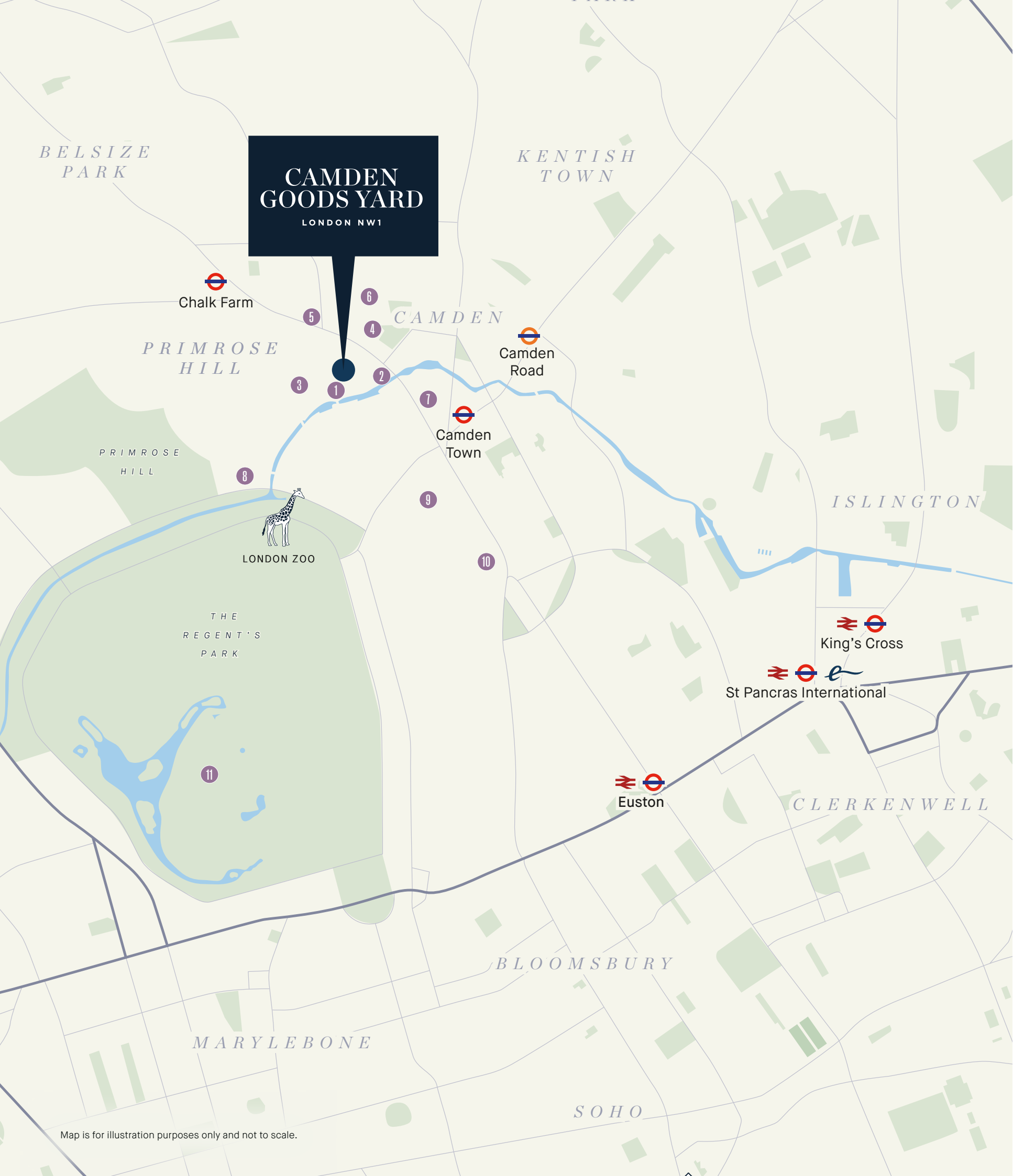


# ENTERTAINMENT.

## What's On?

Drama, jazz, soul, spoken word and stand-up comedy  
all feature in Camden's lively entertainment scene.





Map is for illustration purposes only and not to scale.

- 1 Junkyard Golf**  
Stables Market, Chalk Farm Road  
NW1 8AB  
W [junkyardgolfclub.co.uk](http://junkyardgolfclub.co.uk)
- 2 Camden Assembly**  
49 Chalk Farm Road, Chalk Farm  
NW1 8AN  
W [camdenassembly.com](http://camdenassembly.com)
- 3 London Waterbus Company**  
West Yard, Camden Market (Lock)  
NW1 8AF  
W [londonwaterbus.com](http://londonwaterbus.com)
- 4 FEST Camden**  
Camden Stables Market, FEST  
NW1 8AH
- 5 Roundhouse**  
Chalk Farm Road, Chalk Farm  
NW1 8EH  
W [roundhouse.org.uk](http://roundhouse.org.uk)
- 6 Dingwalls**  
East Yard, 11 Camden Lock Place  
NW1 8AL  
W [dingwalls.com](http://dingwalls.com)
- 7 Electric Ballroom**  
184 Camden High Sreet  
NW1 8QP  
W [electricballroom.co.uk](http://electricballroom.co.uk)

- 8 Babylon Park**  
8 Castlehaven Street  
NW1 8QU  
W [babylonpark.com](http://babylonpark.com)
- 9 The Jazz Café**  
5 Parkway  
NW1 7PG  
W [thejazzcafelondon.com](http://thejazzcafelondon.com)
- 10 KOKO**  
1A Camden High Street  
NW1 7JE  
W [koko.co.uk](http://koko.co.uk)
- 11 Regent's Park Open Air Theatre**  
The Regent's Park, Inner Circle  
NW1 4NU  
W [openairtheatre.com](http://openairtheatre.com)



## Roundhouse

Chalk Farm Road, Chalk Farm  
NW1 8EH

W [roundhouse.org.uk](http://roundhouse.org.uk)

A true Camden institution, Roundhouse has been a hub of creativity for 50 years. Live acts have included The Rolling Stones, David Bowie, The Ramones and Blondie. In 2006 it changed course to become a leading arts venue; showcasing drama, stand-up, poetry and – of course – music.



Travel times are approximate only. Source: Google Maps.



## The Jazz Cafe

5 Parkway  
NW1 7PG

W [thejazzcafelondon.com](http://thejazzcafelondon.com)

One of London's most iconic music venues, where some of the biggest names in jazz and soul have performed over the last 30 years, as have local talents and rising stars.



Credit: @benmcquaide, image courtesy of @thejazzcafe



## London Waterbus Company

West Yard  
Camden Market (Lock)  
NW1 8AF

W [londonwaterbus.com](http://londonwaterbus.com)

Explore London's charm aboard a Regent's Canal Waterbus! Glide between Camden Market and Little Venice unveiling the city's scenic waterways.



## Camden Assembly

49 Chalk Farm Road  
Chalk Farm  
NW1 8AN

W [camdenassembly.com](http://camdenassembly.com)

Formerly the Camden Barfly, Camden Assembly has been one of Camden's most important music venues for many years. Bands like Coldplay, Franz Ferdinand and many more cut their teeth here.



## Junkyard Golf

Stables Market  
Chalk Farm Road  
NW1 8AB

W [junkyardgolfclub.co.uk](http://junkyardgolfclub.co.uk)

Crazy golf, crazier cocktails, welcome to Camden's wildest golf course. 4 unique 9-hole courses, it's golf reinvented.





# KOKO - OUR HOT PICK.

## KOKO the Iconic Music Venue

Steeped in history since its 1900 opening as a theatre, KOKO (formerly Camden Palace) is now a London music landmark. Hosting over 1,000 concerts annually, it offers a vibrant mix of live music and KOKO Electronic club nights, showcasing established and up-and-coming artists across various genres. The venue's distinctive architecture and energetic atmosphere have cemented its place as a cultural icon within the Camden music scene.





# THE HOUSE OF KOKO.

## Members' Club

Tucked backstage, House of KOKO isn't your average members' club. Spread over four luxuriously appointed floors, it's a playground for the city's elite. Think sleek new restaurants, a rooftop retreat overlooking the city, and a recording studio for impromptu music sessions.

But that's just the tip of the iceberg. Hidden speakeasies and secret vinyl rooms pique the curiosity, while exclusive access to members-only events fuels the exclusivity factor. With over 50,000 square feet to explore, House of KOKO is a labyrinth of hidden gems, secret passageways and concealed bars. House of KOKO isn't just a club; it's a captivating experience waiting to be discovered.

Credit: Battens Bar, The House of KOKO Lesleu Lau  
Travel times are approximate only. Source: Google Maps.



# CAFÉ KOKO.

## A Lively Welcoming Hub

Hidden behind London's iconic KOKO music venue. This stylish and inviting café offers a menu designed by international Chef Andreas Engberg, featuring delicious Italian small plates, pizzas, and cocktails. It's a vibrant hub of creative energy boasting curated music and art alongside weekly live acts and DJ sets. It's no wonder celebrities like Stormzy and Nicki Minaj have been spotted here!



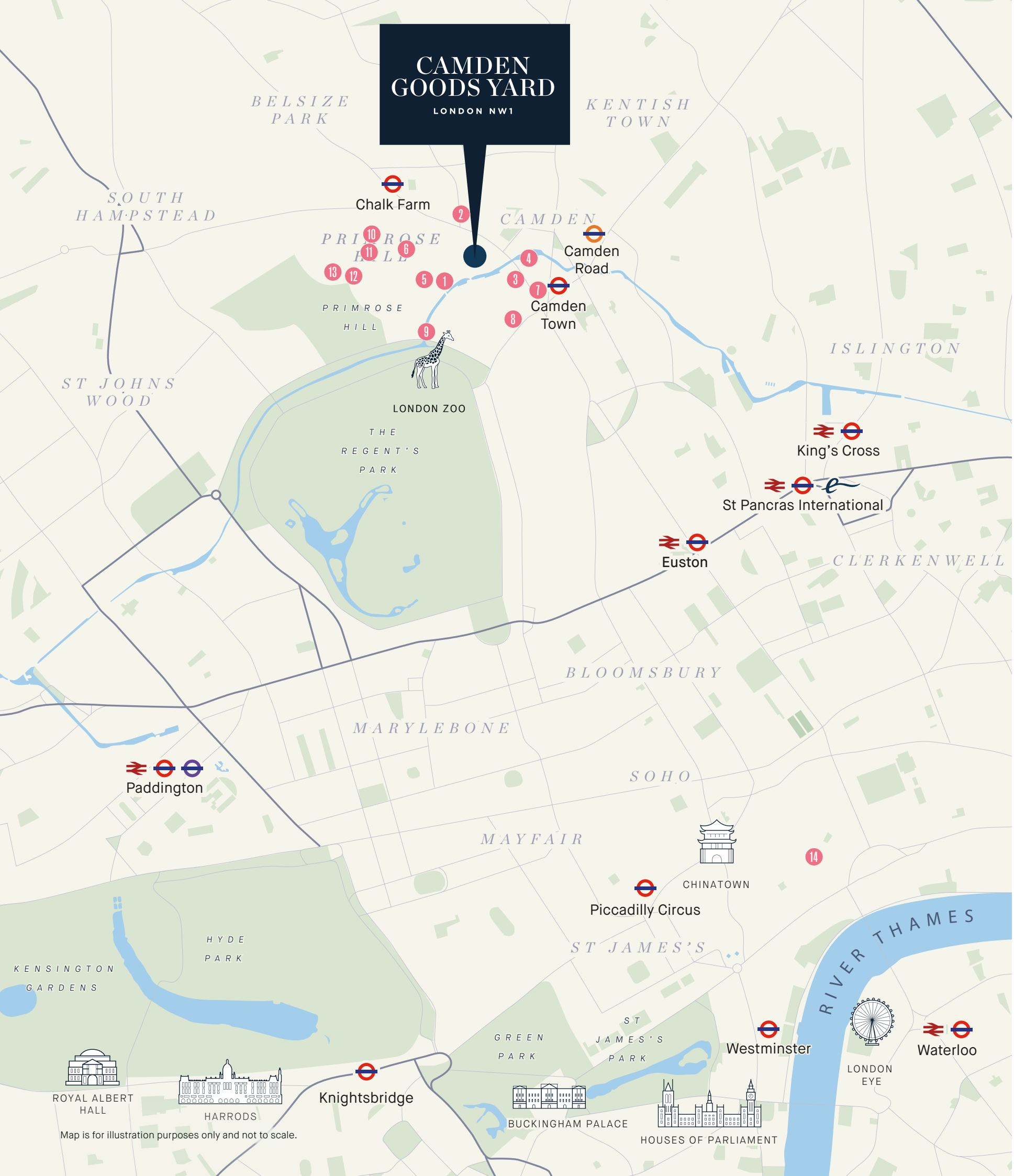


# EATING OUT.

## World-Cuisine Made Local

From fine dining to casual brunches, quiet and elegant to lively and musical; the local eateries cater for every occasion, serving food from many countries and cuisines.





- 1 Michael Nadra**  
42 Gloucester Avenue  
NW1 8JD  
W [restaurant-michaelnadra.co.uk](http://restaurant-michaelnadra.co.uk)
- 2 Near & Far Camden**  
48 Chalk Farm Road  
Camden NW1 8AJ  
W [nearandfarlondon.com/camden](http://nearandfarlondon.com/camden)
- 3 Mildreds Camden**  
9 Jamestown Road  
NW1 7BW  
W [mildreds.co.uk](http://mildreds.co.uk)
- 4 Poppies Fish & Chips**  
30 Hawley Crescent  
NW1 8NP  
W [poppiesfishandchips.co.uk](http://poppiesfishandchips.co.uk)
- 5 Primrose Bakery**  
69 Gloucester Avenue,  
NW1 8LD  
W [primrose-bakery.co.uk](http://primrose-bakery.co.uk)
- 6 The Lansdowne**  
90 Gloucester Avenue  
NW1 8HX  
W [thelansdownepub.co.uk](http://thelansdownepub.co.uk)
- 7 Daphne**  
83 Bayham Street  
NW1 0AG

- 8 Namaaste Kitchen**  
64 Parkway  
NW1 7AH  
W [namaastekitchen.co.uk](http://namaastekitchen.co.uk)
- 9 Feng Shang Princess**  
Cumberland Basin, Prince Albert Road  
NW1 7SS  
W [fengshang.co.uk](http://fengshang.co.uk)
- 10 Greenberry Cafe**  
101 Regent's Park Road  
NW1 8UR  
W [greenberrycafe.co.uk](http://greenberrycafe.co.uk)
- 11 Lemonia**  
89 Regent's Park Road  
NW1 8UY  
W [lemonia.co.uk](http://lemonia.co.uk)
- 12 Odette's**  
130 Regent's Park Road, Primrose Hill  
NW1 8XL  
W [odettesprimrosehill.com](http://odettesprimrosehill.com)
- 13 It's Bagels**  
65 Regent's Park Road  
NW1 8XD  
W [itsbagels.com](http://itsbagels.com)
- 14 SUSHISAMBA**  
Covent Garden, 35 The Market  
WC2E 8RF  
W [sushisamba.com](http://sushisamba.com)

## HOT SPOTS IN CAMDEN'S MARKETS.

- |                     |                       |                   |
|---------------------|-----------------------|-------------------|
| Camden Tea Company  | Half Hitch Distillery | The Cheese Wheel  |
| Chin Chin Ice cream | Hans & Gretel         | Three Uncles      |
| Funky Chips         | Humble Crumble        | Yorkshire Burrito |



Michael Nadra

42 Gloucester Avenue,  
NW1 8JD

W restaurant-michaelnadra.co.uk

Chef Michael Nadra’s restaurant is tucked away in Primrose Hill, just a short stroll away from Regent’s Canal and Camden. Offering modern British food in a unique space complete with a bright conservatory and bar, intimate fireplace, Grade II listed horse tunnel and outdoor terrace.



Travel times are approximate only. Source: Google Maps.



Humble Crumble

Unit 739, Camden Market, Chalk Farm,  
NW1 8AH

W humble-crumble.com

Humble Crumble re-imagines the classic British desert, offering hot and iced options with endless supply of custard! Customise your fruit and crumble ratio and discover why this Camden hot spot is a sweet-toothed Londoners favourite.



Odette’s Restaraunt

130 Regent’s Park Road,  
NW1 8XL

W odettesprimrosehill.com

One of the London’s original dining rooms, having opened in 1978, Odette’s is run and owned by chef Patron Bryn Williams. Recognised as an iconic neighbourhood restaurant, Odette’s attracts illustrious patrons from the worlds of art and theatre for over three decades.



Poppies

30 Hawley Crescent,  
NW1 8NP

W poppiesfishandchips.co.uk

Poppies is renowned for authenticity and it’s little wonder, with born and bred East end proprietor, Pat ‘Pop’ Newland, at the helm. Pop’s career in the fish and chip business started in 1952 when, aged 11, he got a job on Roman Road cutting up copies of The Daily Mirror to wrap fish and chips in.



Primrose Bakery

69 Gloucester Avenue,  
NW1 8LD

W primrose-bakery.co.uk

A popular bakery and family-run business where everything is hand iced and baked in small batches to really give the essence of simple old fashioned cooking.



Feng Shang Princess

Cumberland Basin, Prince Albert Road,  
NW1 7SS

W fengshang.co.uk

An exquisite floating Chinese Restaurant serving outstanding food, fine wine, cocktails and Champagne, all set in the magnificence of Regent’s Park.







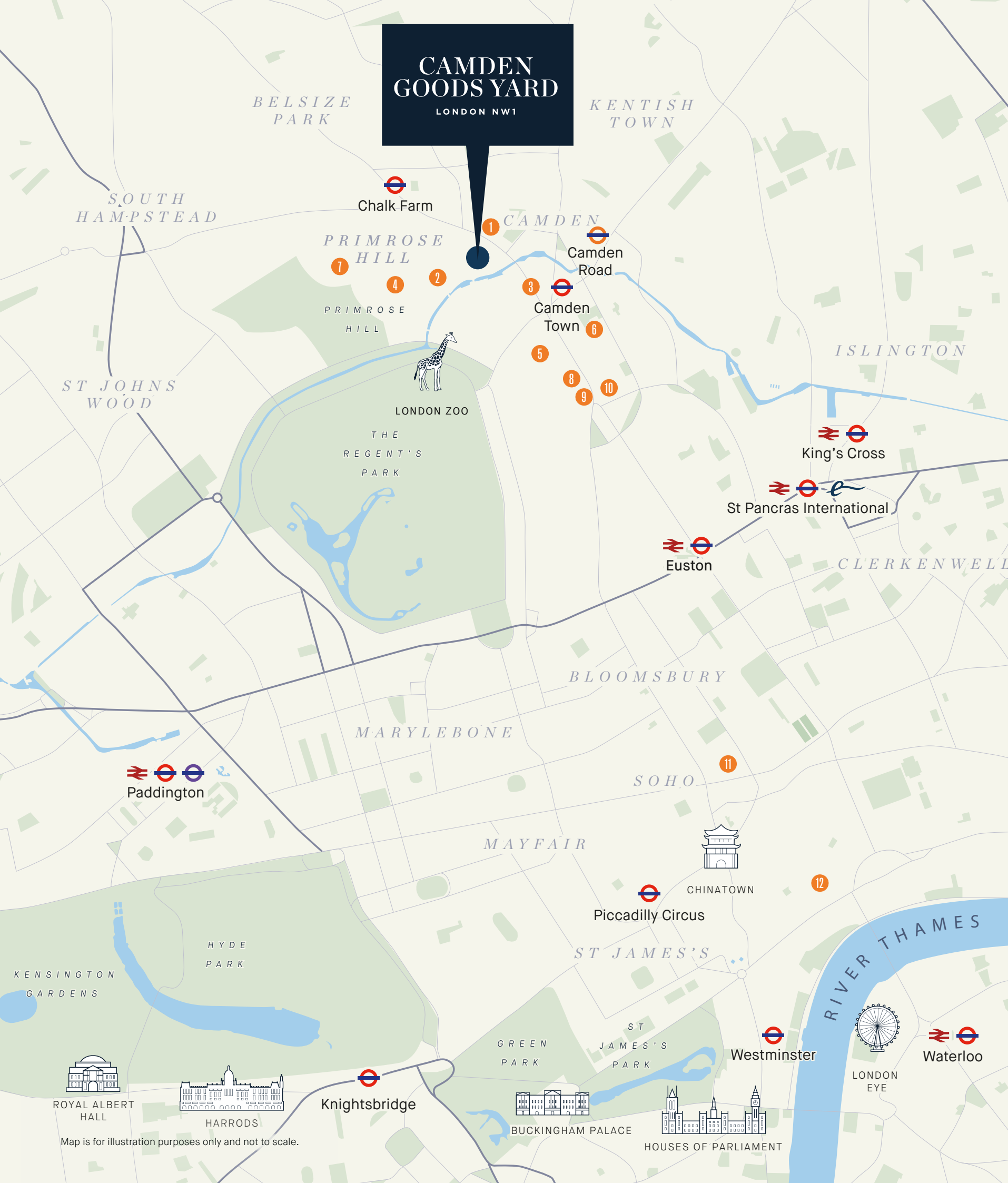
# BARS.

## Pour Yourself a Great Night

---

Camden and Primrose Hill are renowned for their drinking spots, which cover every mood from party nights to sophisticated cocktail evenings.





- 1 Camden Assembly**  
49 Chalk Farm Road, Chalk Farm  
NW1 8AN  
W [camdenassembly.com](http://camdenassembly.com)
- 2 The Engineer**  
65 Gloucester Avenue, Chalk Farm  
NW1 8JD  
W [theengineerprimrosehill.co.uk](http://theengineerprimrosehill.co.uk)
- 3 The Lucky Club**  
North Stables Yard, Chalk Farm Road  
NW1 8AH  
W [theluckyclub.com](http://theluckyclub.com)
- 4 The Princess of Wales**  
22 Chalcot Road  
NW1 8LL  
W [lovetheprincess.com](http://lovetheprincess.com)
- 5 The Blues Kitchen**  
111–113 Camden High Street  
NW1 7JN  
W [theblueskitchen.com/camden](http://theblueskitchen.com/camden)
- 6 BrewDog**  
113 Bayham Street  
NW1 0AG  
W [brewdog.com](http://brewdog.com)
- 7 The Queen's**  
49 Regent's Park Road  
NW1 8XD  
W [thequeensprimrosehill.co.uk](http://thequeensprimrosehill.co.uk)
- 8 Simmons Bar**  
7 Camden High Street  
NW1 7JE  
W [simmonsbar.co.uk](http://simmonsbar.co.uk)

- 9 BYOC**  
11–13 Camden High Street  
Camden Town  
NW1 7JE  
W [byoc.co.uk](http://byoc.co.uk)
- 10 Café - KOKO**  
74 Crowndale Road  
NW1 1TP  
W [cafe-koko.co.uk](http://cafe-koko.co.uk)
- 11 The Coral Room**  
16–22 Great Russell Street  
WC1B 3NN  
W [thecoralroom.co.uk](http://thecoralroom.co.uk)
- 12 Blame Gloria**  
20 Bedford Street  
WC2E 9HP  
W [blamegloria.co.uk](http://blamegloria.co.uk)



## The Queen's

49 Regent's Park Road,  
NW1 8XD

W [thequeensprimrosehill.co.uk](http://thequeensprimrosehill.co.uk)

Located just yards away from Primrose Hill, The Queen's offers locals and visitors alike seasonal British food alongside and extensive drinks list.



Travel times are approximate only. Source: Google Maps.  
Underground times calculated from Camden Town Station.



## The Blues Kitchen

111–113 Camden High Street,  
NW1 7JN

W [theblueskitchen.com](http://theblueskitchen.com)

The Blues Kitchen serves up live music, cocktails and New Orleans style food which includes mouth-watering dishes such as cajun popcorn squid, red pepper and bean chilli, St Louis pork ribs and hot chicken buffalo sandwich.



## The Lucky Club Camden

The Terrace, North Stables Yard,  
Camden Market,  
NW1 8AH

W [theluckyclub.com](http://theluckyclub.com)

Located atop the historic North Yard of Camden Market, The Lucky Club is a tropical rooftop oasis serving food and drinks inspired by Mexico.



## BYOC

11–13 Camden High Street, Camden Town,  
NW1 7JE

W [byoc.co.uk](http://byoc.co.uk)

BYOC Camden is a cosy cocktail bar that sells no alcohol. Inspired by the Prohibition-era speakeasy and the birth of cocktail culture in the 1920s, patrons bring spirits of their choice. A booking guarantees seats and the personal attention of a first class mixologist who creates unique cocktails using the finest quality syrups, bitters, purées, herbs, fruits and spices. Many of these "secret" ingredients are prepared from scratch.





# SHOPPING HOTSPOTS.

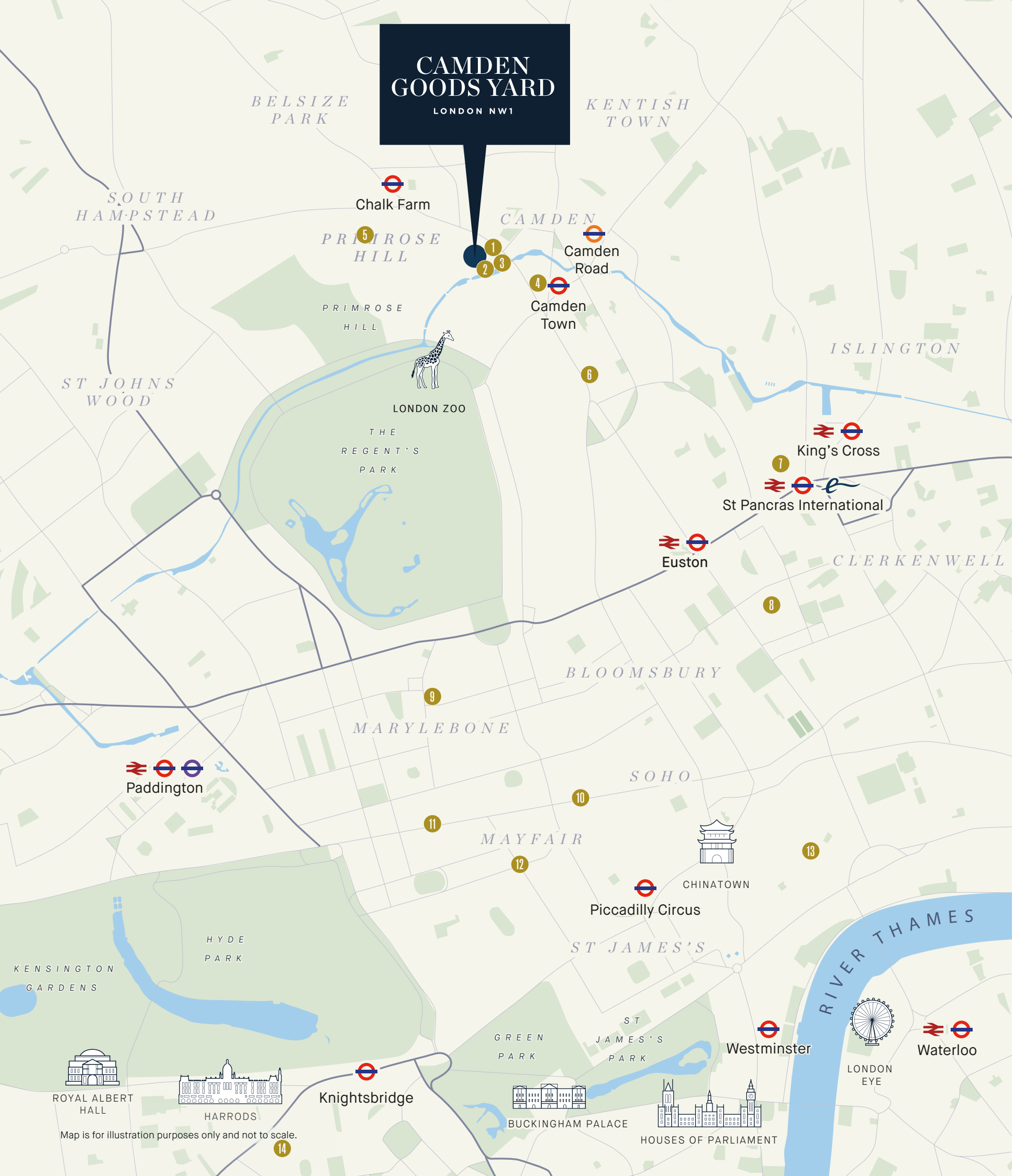
## Keeping it Local

Around Camden are many different, contrasting areas to shop. Camden is known for its markets, Primrose Hill for its fashion boutiques and coffee shops, and Marylebone Village for upmarket designers and jewellers.





SHOPPING HOTSPOTS.



CAMDEN  
GOODS YARD  
LONDON NW1

- 1 Stables Market**  
842 Chalk Farm Road  
NW1 8BF  
W [camdenmarket.com](http://camdenmarket.com)
- 2 Camden Market**  
Camden Lock Market  
Unit 215—216 Chalk Farm Road  
NW1 8AF  
W [camdenmarket.com](http://camdenmarket.com)
- 3 Camden Lock Village**  
54-56 Camden Lock Place  
NW1 8AF
- 4 Buck Street Market**  
192, 198 Camden High Street  
NW1 8QP  
W [buckstreet.market](http://buckstreet.market)
- 5 Primrose Hill**  
160 Regent's Park Road  
NW1 8XN  
W [pressprimrosehill.com](http://pressprimrosehill.com)
- 6 Camden High Street**  
22 Camden High Street  
NW1 0JH  
W [camden.gov.uk](http://camden.gov.uk)
- 7 Coals Drop Yard**  
Stable Street  
N1C 4DQ  
W [kingscross.co.uk/coal-drops-yard](http://kingscross.co.uk/coal-drops-yard)

- 8 Brunswick Centre**  
The Brunswick  
WC1N 1BS  
W [brunswick.co.uk](http://brunswick.co.uk)
- 9 Marylebone Village**  
Marylebone High Street
- 10 Oxford Circus**  
Oxford Street, Soho  
W1D 1BS  
W [oxfordstreet.co.uk](http://oxfordstreet.co.uk)
- 11 Selfridges**  
400 Oxford Street  
W1C 1JS  
W [selfridges.com](http://selfridges.com)
- 12 Bond Street**  
Bond Street  
W1S 1SP  
W [bondstreet.co.uk](http://bondstreet.co.uk)
- 13 Covent Garden**  
Covent Garden  
WC2E 8RF  
W [coventgarden.london](http://coventgarden.london)
- 14 Harrods**  
Brompton Road  
SW1X 7XL  
W [harrods.com](http://harrods.com)

Map is for illustration purposes only and not to scale.



Oxford Circus

Oxford Street, Soho  
W1D 1BS

W [oxfordstreet.co.uk](https://www.oxfordstreet.co.uk)

Two of London's best known shopping streets. Oxford Street is famous for Selfridges and John Lewis. Regent Street is lined with shops offering fashion, technology, jewellery, sportswear, accessories, as well as the quirky Liberty store and Hamley's toy shop.



Camden Market

1 Camden Lock Market  
Unit 215 - 216  
Chalk Farm Road, NW1 8AF

The original, quintessentially Camden market has over 1,000 shops, stalls, bars and cafés. It was one of London's first crafts and antiques markets, and is still the principle market for crafts. This is the place to choose handmade, original gifts and souvenirs.



Coals Drop Yard

Stable St,  
N1C 4DQ



King's Cross's must-visit shopping and dining destination offers over 50 unique shops, cafés, bars and restaurants housed in charming brick arches and cobbled streets. Independent finds meet big names, all steps from King's Cross and St Pancras stations.



Marylebone Village

Marylebone High Street,  
W1U 4QF



Located in the heart of central London, Marylebone Village charms with chic boutiques and upscale eateries lining its high street. Unwind in this elegant area, home to the world-famous Wallace Collection and iconic museums like Madame Tussauds and Sherlock Holmes.



Primrose Hill

Primrose Hill,  
W1D 1BS



Primrose Hill has an upmarket village vibe, where the typical shops are designer boutiques, beauty salons, delicatessens, chic florists, furniture and homeware shops and independent bookstores.







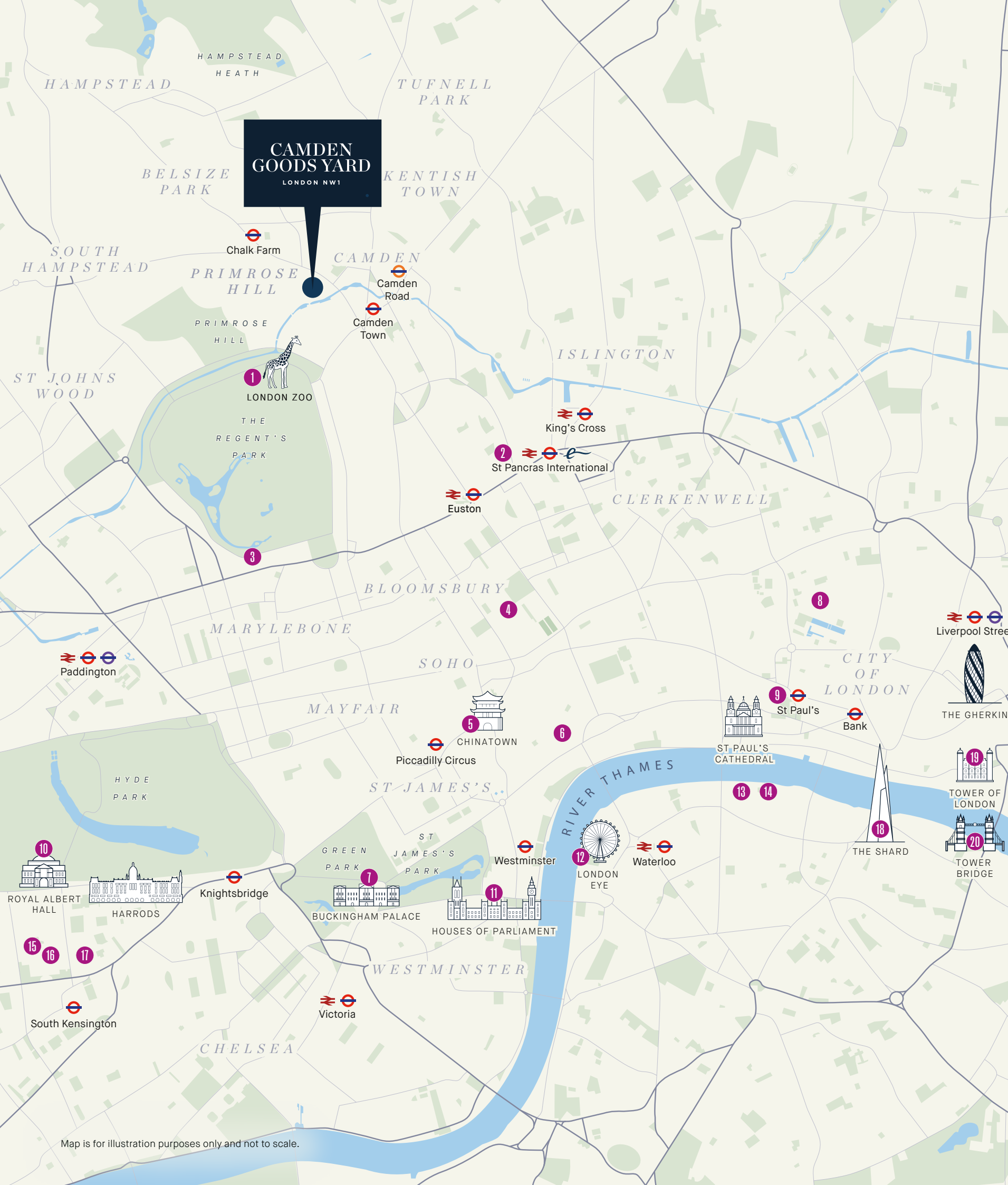
The London Eye.

# ATTRACTIONS.

## London's Finest

It's hard to summarise London in just a few attractions, but these are some of the ones that continue to be admired by visitors from all over the world.





Map is for illustration purposes only and not to scale.

- 1 London Zoo**  
 Regent's Park  
 NW1 4RY  
 W [londonzoo.org](http://londonzoo.org)
- 2 British Library**  
 96 Euston Rd  
 NW1 2DB  
 W [bl.uk](http://bl.uk)
- 3 Madame Tussauds**  
 Marylebone Road  
 NW1 5LR  
 W [madametussauds.com/london](http://madametussauds.com/london)
- 4 British Museum**  
 Great Russell Street  
 WC1B 3DG  
 W [britishmuseum.org](http://britishmuseum.org)
- 5 Chinatown**  
 Gerrard Street  
 W1D 5PT  
 W [chinatown.co.uk](http://chinatown.co.uk)
- 6 Royal Opera House**  
 Bow St  
 WC2E 9DD  
 W [roh.org.uk](http://roh.org.uk)
- 7 Buckingham Palace**  
 Westminster  
 SW1A 1AA  
 W [rct.uk/visit/buckingham-palace](http://rct.uk/visit/buckingham-palace)
- 8 Barbican**  
 Silk St, Barbican  
 EC2Y 8DS  
 W [barbican.org.uk](http://barbican.org.uk)
- 9 St Paul's Cathedral**  
 St Paul's Churchyard  
 EC4M 8AD  
 W [stpauls.co.uk](http://stpauls.co.uk)
- 10 Royal Albert Hall**  
 Kensington Gore, South Kensington  
 SW7 2AP  
 W [royalalberthall.com](http://royalalberthall.com)
- 11 Westminster Abbey**  
 20 Deans Yard  
 SW1P 3PA  
 W [westminster-abbey.org](http://westminster-abbey.org)
- 12 London Eye**  
 Riverside Building, County Hall  
 SE1 7PB  
 W [londoneye.com](http://londoneye.com)
- 13 Tate Modern**  
 Bankside  
 SE1 9TG  
 W [tate.org.uk](http://tate.org.uk)
- 14 Shakespeare's Globe**  
 21 New Globe Walk  
 SE1 9DT  
 W [shakespearesglobe.com](http://shakespearesglobe.com)
- 15 Natural History Museum**  
 Cromwell Road  
 SW7 5BD  
 W [nhm.ac.uk](http://nhm.ac.uk)
- 16 Science Museum**  
 Exhibition Road, South Kensington  
 SW7 2DD  
 W [sciencemuseum.org.uk](http://sciencemuseum.org.uk)
- 17 Victoria and Albert Museum**  
 Cromwell Road  
 SW7 2RL  
 W [vam.ac.uk](http://vam.ac.uk)
- 18 The Shard**  
 32 London Bridge Street  
 SE1 9SG  
 W [theviewfromtheshard.com](http://theviewfromtheshard.com)
- 19 Tower of London**  
 EC3N 4AB  
 W [hrp.org.uk](http://hrp.org.uk)
- 20 Tower Bridge**  
 Tower Bridge Rd  
 SE1 2UP  
 W [towerbridge.org.uk](http://towerbridge.org.uk)



## Madame Tussauds



Marylebone Road  
NW1 5LR

W [madametussauds.com/london](https://www.madametussauds.com/london)

Madame Tussauds combines glitz and glamour with incredible heritage. There are over 150 wax figures on display at any one time. Visit to get up close and personal to some of your favourite icons and famous faces.



## British Museum



Great Russell Street  
WC1B 3DG

W [britishmuseum.org](https://www.britishmuseum.org)

Without doubt, one of the world's greatest museums. Its star exhibits include the Rosetta Stone, Parthenon Marble Sculptures, the Portland Vase and the impressive collection of Egyptian mummies. The covered-in courtyard around the Reading Room is a beautiful, inspiring space.



Travel times are approximate only. Source: Google Maps.



## Barbican



Silk Street, Barbican  
EC2Y 8DS

W [barbican.org.uk](https://www.barbican.org.uk)

This unique venue presents a diverse range of art, music, theatre, dance, film and creative learning events. The Barbican provides a vibrant London home for established international artists and also help commissioners to launch young performers. As well as performances, the Barbican hosts workshops, talks and debates.



## The British Library



96 Euston Road  
NW1 2DB

W [bl.uk](https://www.bl.uk)

The British Library is the national library of the United Kingdom and is one of the largest libraries in the world. It is estimated to contain between 170 and 200 million items from spanning across several countries.

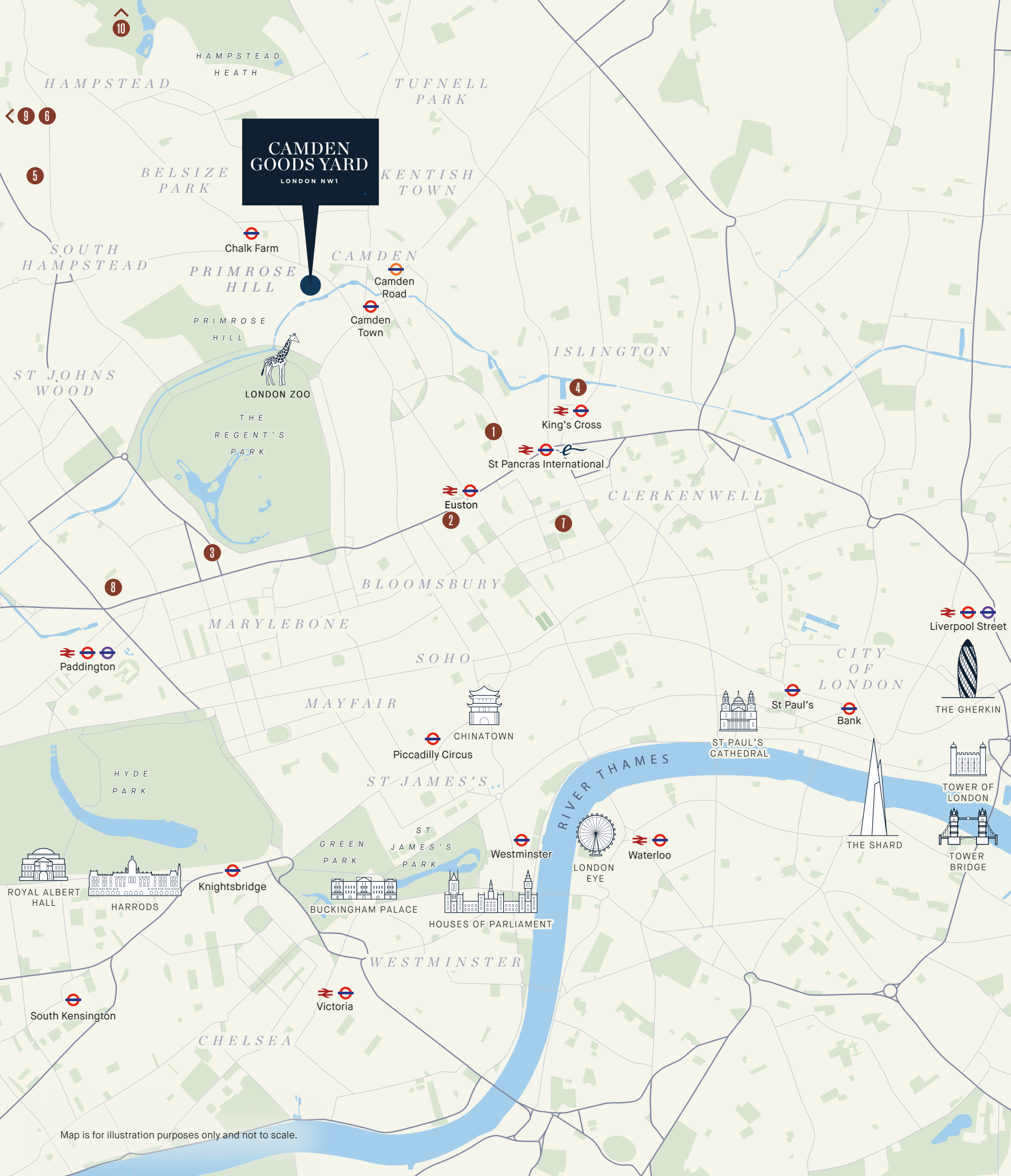


# LEISURE AND CULTURE.

## Revel in Culture

Indulge in your passion for culture by visiting the numerous museums and art galleries on your doorstep.





Map is for illustration purposes only and not to scale.

**1 Francis Crick Institute**

1 Midland Road  
NW1 1AT  
W [crick.ac.uk](http://crick.ac.uk)

**2 Wellcome Collection Museum**

183 Euston Road  
NW1 2BE  
W [wellcomecollection.org](http://wellcomecollection.org)

**3 The Sherlock Holmes Museum**

221b Baker Street  
NW1 6XE  
W [sherlock-holmes.co.uk](http://sherlock-holmes.co.uk)

**4 London Canal Museum**

New Wharf Road  
N1 9RT  
W [canalmuseum.org.uk](http://canalmuseum.org.uk)

**5 Freud Museum**

20 Maresfield Gardens  
NW3 5SX  
W [freud.org.uk](http://freud.org.uk)

**6 Jewish Museum London**

129-131 Albert Street  
NW1 7NB  
W [jewishmuseum.org.uk](http://jewishmuseum.org.uk)

**7 The Foundling Museum**

40 Brunswick Street  
WC1N 1AZ  
W [foundlingmuseum.org.uk](http://foundlingmuseum.org.uk)

**8 Lisson Gallery**

27 Bell Street  
NW1 5BY  
W [lissongallery.com](http://lissongallery.com)

**9 Camden Arts Centre**

Arkwright Road  
NW3 6DG  
W [camdenartcentre.org](http://camdenartcentre.org)

**10 Kenwood House**

Hampstead Lane  
NW3 7RJ  
W [english-heritage.org.uk](http://english-heritage.org.uk)





## Camden Arts Centre

50 Arkwright Road  
NW3 6DG

W [camdenartcentre.org](http://camdenartcentre.org)

Camden Arts Centre is the place to see, to make, to learn and to talk about contemporary art. It combines historic architecture with open, modern spaces, a café, bookshop and secluded garden with free entry for all.



## Wellcome Collection Museum

183 Euston Road  
NW1 2BE

W [wellcomecollection.org](http://wellcomecollection.org)

A free museum and library exploring health and human experience. Through exhibitions, collections, live programming, digital, broadcast and publishing; Wellcome Collection Museum create opportunities for people to think deeply about the connections between science, medicine, life and art.



## Lisson Gallery

27 Bell Street  
NW1 5BY

W [lissongallery.com](http://lissongallery.com)

One of the most influential and longest-running international contemporary art galleries in the world. The Lisson Gallery supports and promotes the work of more than 60 international artists across two spaces in London, three in New York and one in Shanghai, as well as forthcoming galleries in Beijing and Los Angeles.



## London Canal Museum

New Wharf Road  
N1 9RT

W [canalmuseum.org.uk](http://canalmuseum.org.uk)

See inside a narrowboat cabin, learn about the history of London's canals, about the cargoes carried, the people who lived and worked on the waterways and the horses that pulled their boats. This unique waterways museum, the only one in London, is housed in a former ice warehouse built in about 1863.



## The Jewish Museum

129-131 Albert Street  
NW1 7NB

W [jewishmuseum.org.uk](http://jewishmuseum.org.uk)

The Jewish Museum has existed in Camden for over 90 years and aims to tell the story of the history and heritage of Jewish people in Britain through universal themes of migration, family, faith and culture. This is a must see for any visitor to Camden Town.



## The Freud Museum

20 Maresfield Gardens  
NW3 5SX

W [freud.org.uk](http://freud.org.uk)

A museum at what was the home of Sigmund Freud (the founder of psychoanalysis) and his family when they escaped Austria following the Nazi annexation in 1938. The centrepiece of the museum is Freud's study and therapy couch which is preserved just as it was during his lifetime.

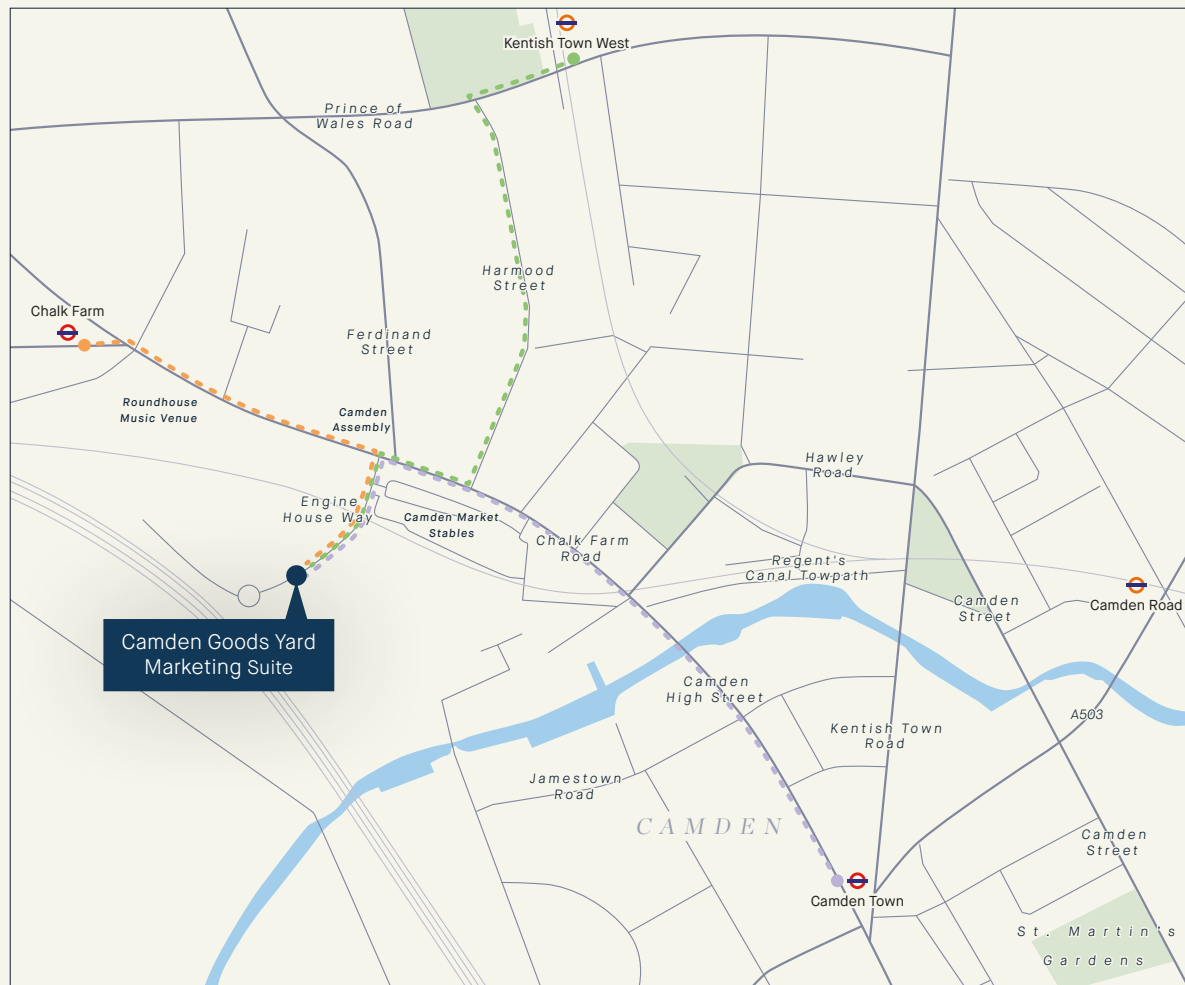




# CONTACT.

Camden Goods Yard Marketing Suite,  
Chalk Farm Road, NW1 8EH

[sales@camdengoodsyard.co.uk](mailto:sales@camdengoodsyard.co.uk)  
+44 (0)203 040 7000



Map is for illustration purposes only and not to scale.

OUR VISION  
2030  
TRANSFORMING TOMORROW

 **Berkeley**  
Group  
Proud member of the  
Berkeley Group

 **Investor in  
Customers**  
Gold 2022

 In-house  
OUTSTANDING  
CUSTOMER  
SATISFACTION

 In-house  
GOLD  
AWARD 2022  
CUSTOMER  
SATISFACTION

 In-house  
MOST  
RECOMMENDED  
COMPANIES  
2022  
WINNER

 **St George**  
Designed for life



CAMDENGOODSYARD.CO.UK