

# CAMDEN GOODS YARD

LONDON NW1

# EDUCATION GUIDE.



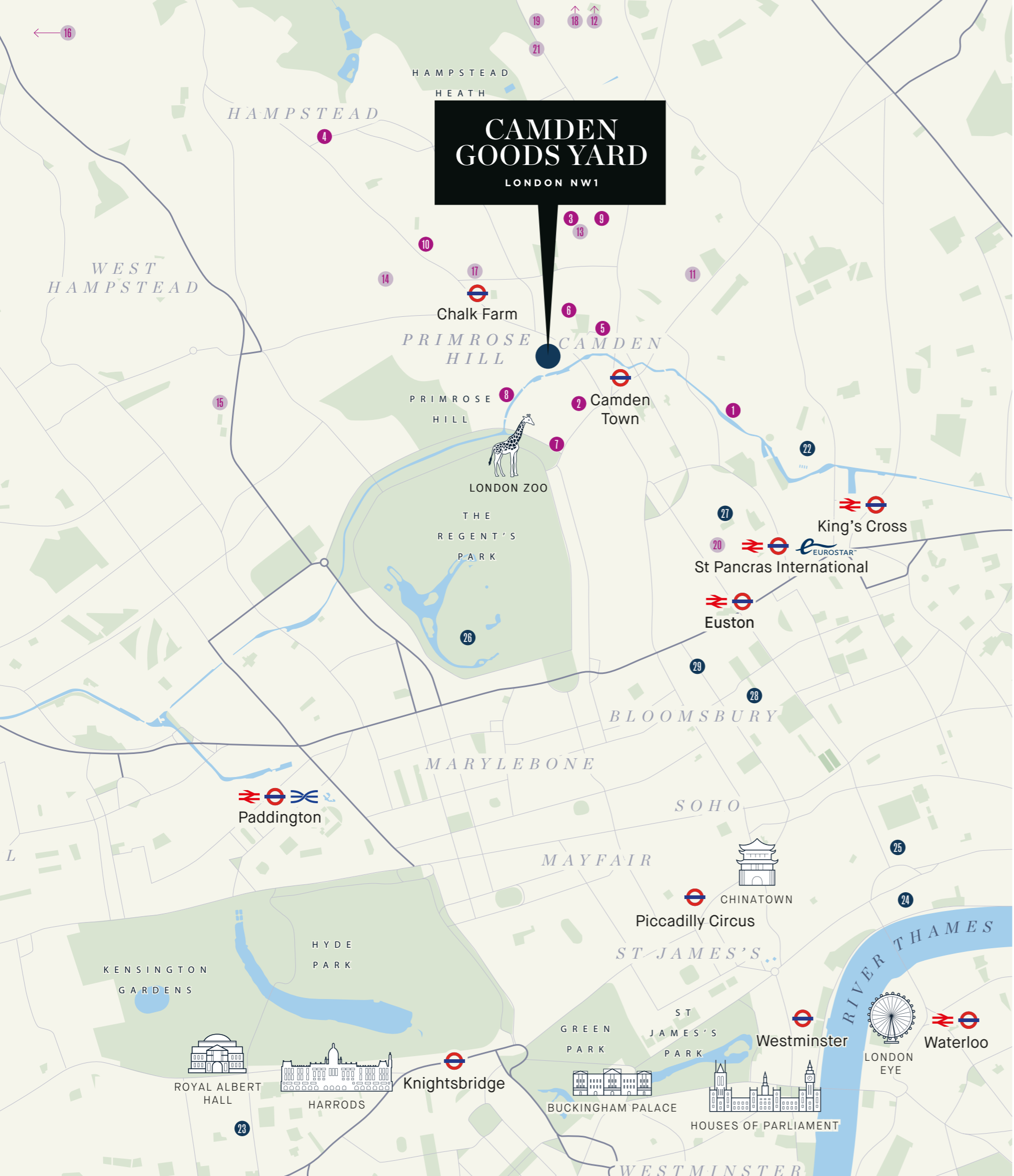
St George  
Designed for life

# EDUCATION.

## Places for all ages

Local to Camden Goods Yard there are excellent education opportunities, including OFSTED rated 'excellent' and 'good' primary and a wide selection of secondary schools. The world-renowned King's College London and London School of Economics are also within close proximity and sit in the top 50 of the World University Rankings.

EDUCATION.



**CAMDEN  
GOODS YARD**  
LONDON NW1

Primary

- 1 **Abacus Belsize Primary School**  
105 Camley Street,  
Jubilee Waterside Centre,  
London, N1C 4PF
- 2 **The Cavendish School**  
31 Inverness Street  
London, NW1 7HB
- 3 **Collège Français Bilingue de Londres**  
87 Holmes Road,  
London, NW5 3AX
- 4 **Hampstead Hill School**  
St Stephens Hall, Pond  
Street,  
London, NW3 2PP
- 5 **Hawley Primary School**  
3 Hawley Road,  
London, NW1 8RP
- 6 **Holy Trinity and St Silas**  
Hartland Road,  
London, NW1 8DE
- 7 **North Bridge House Prep School**  
1 Gloucester Avenue,  
London, NW1 7AB
- 8 **Primrose Hill School**  
Princess Road, Regents Park,  
London, NW1 8JL
- 9 **St Patrick Catholic Primary School**  
Holmes Road,  
London, NW5 3AH
- 10 **The Village Prep School**  
2 Parkhill Road,  
London, NW3 2YN

Secondary

- 11 **The Camden School for Girls**  
Sandall Road,  
London, NW5 2DB
- 12 **Channing Senior School**  
1 Highgate High Street,  
London, N6 5JR
- 13 **Collège Français Bilingue de Londres**  
87 Holmes Road,  
London, NW5 3AX
- 14 **Hampstead Fine Arts College**  
41 – 43 Englands Lane,  
Belsize Park,  
London, NW3 4YD
- 15 **Harris Academy**  
Marlborough Hill,  
London, NW8 0NL
- 16 **Harrow School**  
5 High Street, Harrow,  
HA1 3HP
- 17 **Haverstock School**  
24 Havestock Hill, Chalk  
Farm, London, NW3 2BQ
- 18 **Highgate School**  
North Road, London, N6 4AY
- 19 **La Sainte Union**  
Highgate Road,  
London, NW5 1RP
- 20 **Maria Fidelis Catholic School**  
1 Drummond Crescent,  
London, NW1 1LY
- 21 **Parliament Hill School**  
Highgate Road,  
London, NW5 1RL

University

- 22 **Central Saint Martins**  
Granary Building,  
1 Granary Square  
London, N1C 4AA
- 23 **Imperial College London**  
Exhibition Road,  
London, SW7 2AZ
- 24 **King's College London (KCL)**  
Strand, London,  
WC2R 2LS
- 25 **London School of Economics and Political Science (LSE)**  
Houghton Street,  
London, WC2A 2AE
- 26 **Regent's University London**  
Inner Circle, Regent's Park,  
London, NW1 4NS
- 27 **The Royal Veterinary College**  
4 Royal College Street,  
London, NW1 0TU
- 28 **The School of Oriental & African Studies (SOAS)**  
10 Thornhaugh Street,  
London, WC1H 0XG
- 29 **University College London (UCL)**  
Gower Street, London,  
WC1E 6BT

**LIVE WELL. BE ACTIVE.**

Camden Goods Yard is the perfect place from which to explore London's hidden gems. Two underground stations less than a 10 minute walk away, dedicated cycle parking, TfL cycle hire points, electric car charging spaces and new connective pedestrian walkways will all combine to offer residents easy, active and sustainable travel solutions and support a healthier, cleaner environment.

Map is for illustration purposes only and not to scale  
Journey times are approximate only. Source: Google Maps.

## Abacus Belsize Primary School

105 Camley Street, Jubilee Waterside Centre, London, N1C 4PF

abacus.anthemtrust.uk

- Mixed
- Ages 4 – 11
- Ofsted Rating: Outstanding
- Independent School

Environmentally conscience with their commitment to car free walk to school ethos Abacus Belsize Primary School is a co-educational primary school offering education to 4 – 11 year olds. The school aims to maximise the individual's talent, curiosity and ability to have independent thought. Pupils make outstanding progress and standards in reading, writing and mathematics are above age-related expectations.



## Collège Français Bilingue de Londres

87 Holmes Road, London, NW5 3AX

cfbl.org.uk

- Mixed
- Ages 3 – 15
- Ofsted Rating: Outstanding
- Independent School

Their magnificent Grade II listed main building welcomes pupils from the age of 3 – 15 years. The school is a co-educational bilingual school, providing French-English education to 700 pupils. The highly regarded head teacher continues to raise standards from an already high baseline through a creative curriculum and excellent facilities that offers pupils of all abilities an exciting learning experience that captures their interests.



## The Cavendish School

31 Inverness Street London, NW1 7HB

cavendishschool.co.uk

- Girls
- Ages 3 – 11
- Ofsted Rating: N/A
- Independent School

An educational oasis in the heart of Camden Town, The Cavendish School is a small, friendly prep school for girls aged 3 – 11. It provides a lively well-balanced academic education in a caring environment. The School is housed in a spacious Victorian school building and a modern block. There are two secluded playgrounds and separate well equipped art, science and computer rooms supplemented by an extensive library.



## Hampstead Hill School

St Stephens Hall, Pond Street, London, NW3 2PP

hampsteadhillschool.co.uk

- Mixed
- Ages 2 – 7
- Ofsted Rating: Outstanding
- Independent School

Set in leafy Hampstead Heath welcoming pupils from ages 2 – 7 years Hampstead Hill is an independent Pre-preparatory and Nursery School. The school provides a rich and diverse range of opportunities to promote pupils' spiritual, moral, social and cultural development and consistently excellent teaching in English and mathematics enables pupils to acquire skills and knowledge well beyond those expected for their age. The after-school clubs include drama, gymnastics, chess and dance and the private garden offers an addition to the curriculum where pupils can learn about nature.



## Hawley Primary School

3 Hawley Road, London, NW1 8RP  
hawley.camden.sch.uk

- Mixed
- Ages 3 – 11
- Ofsted Rating: Good

Hawley Primary offers a nurturing environment for girls and boys through the ages 3 – 11. Teachers provide strong direction and maintain a good standard of education and children are well prepared for the next stage of their education. The creative curriculum offers pupils the chance to develop curiosity and self-discipline.



## Holy Trinity and St Silas

Hartland Road, London, NW1 8DE  
holyltrinitynw1.camden.sch.uk

- Mixed
- Ages 4 – 11
- Ofsted Rating: Good

Through Christian values and the arts, Holy Trinity and St Silas is a small mixed primary school. Through the six values that the school has woven into the school it offers teaching through creative means. Drama, music and art give the children room to express themselves and build a grounded foundation to achieve higher aspirations. Split between two buildings the schools 210 pupils have the chance to grow in this unique environment.



## North Bridge House Prep School

1 Gloucester Avenue, London, NW1 7AB  
northbridgehouse.com

- Mixed
- Ages 4 – 13
- Ofsted Rating: Outstanding
- Independent School

An all rounded education is offered through a rigorous curriculum, over 30 after school clubs, a thriving Arts department and specialist academic provision. From the age of 4 – 13 North Bridge House offers boys and girls a fully rounded education developing the pupil both academically and personally. Being situated on the edge of Regent's Park it is located perfectly for sports fixtures and a wealth of outdoor learning opportunities.



## Primrose Hill School

Princess Road, Regents Park,  
London, NW1 8JL

primrosehill.camden.sch.uk

- Mixed
- Ages 2 – 11
- Ofsted Rating: Outstanding

A popular Primary School and Nursery occupying an impressive, listed, Victorian building with two large playgrounds, sport facilities and a garden. Primrose Hill welcomes boys and girls from 2 – 11 years old and boasts a teaching ratio of 19:1, creating a specialised teaching environment and offering a curriculum that promotes fairness, justice and equality. The school looks out onto Regent's Canal and is near to a number of interesting places such as London Zoo, Camden Market and Regent's Park, all of which are visited by the children.



## St Patrick Catholic Primary School

Holmes Road, London, NW5 3AH

stpatricks.camden.sch.uk

- Mixed
- Ages 3 – 11
- Ofsted Rating: Good

Located in nearby Kentish Town, St Patrick's is said to be perfect feeder school to a range of top secondary schools. The latest inspection report found that children make a good start in Reception and continue to make good progress in reading, writing and mathematics as they move up through the school. By the end of Year 6, their attainment is above average but higher in English than in mathematics. The teaching standard is good and characterised by consistently good relationships between adults and children.



## The Village Prep School

2 Parkhill Road,  
London, NW3 2YN

thevillageprepschool.com

- Girls
- Ages 2 ½ – 11
- Ofsted Rating: Outstanding
- Independent School

Independent Girls School The Village encourages imagination and aspiration from the age of 2 ½ – 11. Pupils learn a range of subjects in great depth and the many extra-curricular clubs and educational visits prepare them well for adult life. Tailoring the teaching to the needs of the girls, the teachers aim to integrate determination into exciting learning that goes beyond just a curriculum. Class sizes are kept to a minimum as The Village Prep School has under 100 pupils.





# SECONDARY SCHOOLS.

## Camden School for Girls

Sandall Road, London, NW5 2DB  
 camdengirls.camden.sch.uk

- Girls
- Ages 11 – 18
- Ofsted Rating: Good
- Public School

The school was founded in 1871 by a leading pioneer of women's education and welcomes girls from 11 – 18. The school prides itself on providing excellent education with subjects such as languages and history being particularly popular. Pupils also have access to a wide range of extra-curricular activities such as clubs for current affairs, GCSE Greek, various sports clubs, and the 'eco-committee'.



## Channing School

1 Highgate High Street, London, N6 5JR  
 channing.co.uk

- Girls
- Ages 4 – 11 (Senior/ Junior)
- Independent School Inspectorate (ISI) Excellent

Channing School is a mainstream independent school for girls aged from 4 – 11 with a linked senior school. The school's exceptional and innovative teaching methods have earned it the highest possible ISI grading. Not only has the quality of the pupils' academic and other achievements been graded as excellent but also the quality of their personal development.



## Collège Français Bilingue de Londres

87 Holmes Road, London, NW5 3AX  
 cfbl.org.uk

- Mixed
- Ages 3 – 15
- Ofsted Rating: Outstanding
- Independent School

Their magnificent Grade II listed main building welcomes pupils from the age of 3 – 15 years. The school is a co-educational bilingual school, providing French-English education to 700 pupils. The highly regarded head teacher continues to raise standards from an already high baseline through a creative curriculum and excellent facilities that offers pupils of all abilities an exciting learning experience that captures their interests.



## Hampstead Fine Arts College

41 – 43 Englands Lane, Belsize Park, London, NW3 4YD  
 hampsteadfinearts.com

- Mixed
- Ages 13 – 19
- Ofsted Rating: Outstanding
- Independent School

Located in a characterful part of nearby Belsize Park in a secluded courtyard the Fine Arts College was founded in 1978 as an independent sixth form college specialising in the study of Arts and Humanities. Today the College offers a wide choice of subjects at GCSE and A level but as expected the arts and humanities predominates. The College functions on an ethos of mutual respect where an individual talents and ambitions are encouraged and nurtured. Virtually all students go on to higher education at a range of universities and art, music and drama schools.



## Harris Academy

Marlborough Hill, London, NW8 0NL  
harrisstjohnswood.org.uk

- Mixed
- Ages 11 – 18
- Ofsted Rating: Good

Welcoming girls and boys from age 11, Harris is a secondary school in St John's Wood, North London, just a short walk to Regent's Park. The school aims to combine traditional values of good manners, excellent behaviour and respect for one another, along with the best of modern teaching methods and technology. The most recent ofsted report praised the schools 'well-crafted curriculum' and exceptional education and support provided to all students.



## Harrow School

5 High Street, Harrow, HA1 3HP  
harrowschool.org.uk

- Boys
- Ages 13 – 18
- Ofsted Rating: Excellent
- Independent School

Harrow School is a full-boarding school for boys aged 13 – 18, founded in 1572 under a Royal Charter granted by Elizabeth I. Harrow's history and influence have made it one of the most prestigious schools in the world. The school has an enrolment of about 820 boys, all of whom board full-time, in twelve boarding houses. Harrow is a feeder school to Oxford and Cambridge ('Oxbridge') with around 22 pupils securing places at Oxbridge.



## Haverstock School

24 Havestock Hill, Chalk Farm, London, NW3 2BQ  
haverstock.camden.sch.uk

- Mixed
- Ages 11 – 18
- Ofsted Rating: Good

The main ethos of the school encourages students to 'Be Kind'. This ensures that the students work together as a family to look after each other. Over the past years students have been accepted into Oxbridge and Russell Group universities, setting itself in good stead to complete with other top schools in the area.



## La Sainte Union

Highgate Road, London, NW5 1RP  
lasainteunion.org.uk

- Girls
- Ages 11 – 18
- Ofsted Rating: Good
- Roman Catholic School

A popular Roman Catholic secondary school with a large sixth form accepting students from all faiths and none. The inclusive curriculum provides a range of academic and vocational pathways that speak to the high attainment levels of students and exceptional results in English and religious education. The school also has specialist status for Science with Mathematics.



## Highgate School

North Road, London, N6 4AY  
highgateschool.org.uk

- Mixed
- Ages 4 – 18
- Independent School Inspectorate (ISI) Excellent

Founded over 450 years ago, Highgate is one of the UK's leading co-educational independent schools located in Highgate Village. The school seeks to provide a broad, intellectual education complemented by many opportunities to develop human qualities through service and co-curricular activities in a framework of high-quality, responsive pastoral care. It aims to ensure that pupils use their minds and voices to make a difference to the world around them. In 2021, Highgate School won the Sunday Times London Independent School of the Decade award.



## Maria Fidelis Catholic School

1 Drummond Crescent, London, NW1 1LY  
mariafidelis.camden.sch.uk

- Mixed
- Ages 11 – 18
- Ofsted Rating: Good

Maria Fidelis Roman Catholic Convent School is smaller than the average-sized secondary school with a sixth form provision. Students benefit from partnerships with other local schools, enabling a wider range of courses to be offered, which are matched well to students' differing needs and additional revision, booster lessons and individual support programmes are offered to help students to achieve well. The school has a sport-focussed extra circular programme and award-winning gospel choir.



## Parliament Hill School

Highgate Road, London, NW5 1RL  
parliamenthill.camden.sch.uk

- Girls, mixed sixth form
- Ages 11 – 18
- Ofsted Rating: Good

Set a stone's throw from Hampstead Heath, the school offers an unswerving commitment of an inclusive culture and well established reputation. Many of the pupils follow on to Russell Group universities, including Oxbridge. The school provides the students the ability and guidance to apply to any university of their choice and the most recent Ofsted report rates the schools leadership and management as outstanding.





## Central Saint Martin's

Granary Building, 1 Granary Square,  
London, N1C 4AA

[arts.ac.uk/colleges/central-saint-martins](https://arts.ac.uk/colleges/central-saint-martins)

We are a world-renowned arts and design college offering full-time courses at foundation, undergraduate and postgraduate levels, and a variety of short and summer courses, covering programmes such as acting, art, design, fashion, graphics and jewellery and textiles. The main Campus is located in a stylish converted warehouse complex in the vibrant King's Cross. In 2021 the University of the Arts London was ranked by QS as number 2 globally under 'Art and Design', second only to the postgraduate Royal College of Art in London. The University has an enviable alumni which includes Matthew Williamson, Stella McCartney and Alexander McQueen.



## Imperial College London

Exhibition Road, London, SW7 2AZ

[imperial.ac.uk](https://imperial.ac.uk)

Imperial College London is consistently ranked amongst the best universities in the world and forms part of the 'Golden Triangle' of six elite British universities, which also includes Oxford and Cambridge. Imperial is traditionally known for world-class science, engineering and medicine programmes, although more recently the Imperial College Business School and Humanities department have gained high regard. Imperial College London is part of the prestigious Russell Group and is ranked the 5th best university in the UK by the latest Times Good University Guide. It is regularly ranked as one of the ten best universities in the world (QS World Rankings). Ground breaking work and cutting edge research is consistently performed at the University, with 14 Nobel Prizes and 81 Fellowships from the Medical Sciences being awarded in the past.



HIGHER EDUCATION.



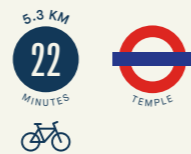


## King's College London (KCL)

Strand, London, WC2R 2LS

kcl.ac.uk

King's College London is England's third oldest university having been founded in 1829. It is ranked in the top 10 UK universities in the world (QS World University Rankings 2022) and has 12 Nobel Prize laureates among its alumni. It is spread across five campuses in central London and currently has over 26,000 students enrolled. King's College London has played a major role in many of the advances that have shaped modern life, such as the discovery of the structure of DNA, and it is now the largest centre for the education of doctors, dentists and other healthcare professionals in Europe. Studying at King's College London will open up a number of opportunities to study around the world.



## London School of Economics and Political Science (LSE)

Houghton Street, London, WC2A 2AE

lse.ac.uk

The London School of Economics and Political Science (LSE) is regarded as an international centre of academic excellence and innovation in the social sciences and is ranked 2nd in the world for social sciences and management by the QS World University Rankings by Subject for 2021.



## Regent's University London

Inner Circle, Regent's Park, London, NW1 4NS

regents.ac.uk

Regent's University is a cosmopolitan university, based in Regent's Park. In September 2020, the University was acquired by Galileo Global Education, joining Galileo's network of 80 campuses and 42 institutions across 13 countries around the world. Regent's University London has approx. 2,171 full time student's offers a wide range of courses in business, liberal arts and fashion design and marketing. The Regent's University Student Union organises a range of clubs and societies, including Polo Club, Finance and Investment Society and Model United Nations.



## The Royal Veterinary College

4 Royal College St, London, NW1 0TU

rvc.ac.uk

Established in 1791, is the largest and longest-established veterinary school in the English-speaking world and one of the world's leading specialist institutions of veterinary medicine, biosciences and veterinary nursing. The College supports a practical learning experience, where students are exposed to a small animal referral hospital, a first-opinion practice, an equine hospital, a farm, diagnostic services and the opportunity to continue professional development. The small animal referrals hospital is the largest and most highly regarded teaching hospital in Europe, with Europe's greatest concentration of 95 veterinary specialists (from over 20 countries), and treats over 7,000 cases each year.



## The School of Oriental & African Studies (SOAS)

10 Thornhaugh St, London, WC1H 0XG

soas.ac.uk

The School of Oriental & African Studies is a public research university in London, and a member institution of the federal University of London. Founded in 1916, SOAS is located in the Bloomsbury area of central London. SOAS is one of the world's leading institutions for the study of Asia, Africa and the Middle East.



## University College London (UCL)

Gower Street, London, WC1E 6BT

uclacademy.co.uk

The main UCL campuses are situated in and around Bloomsbury in central London. As well as admitting the best of the best to study in its hallowed halls (there are currently some 35,000 students), UCL is also a respected research facility and manager of a number of culturally significant museums and collections.

This is one of the top universities not only in England but the world. Matriculation is competitive here and students really need to make A\* and A grades at A-level in order to be successful. UCL is considered to be an academic all-rounder with top-notch teaching staff across all its courses.





## Primrose House at Camden Goods Yard

Primrose House, set within the 8 acres of Camden Goods Yard offers a selection of beautifully appointed homes with interiors by world-renowned designer Tara Bernerd. Primrose House builds on the dynamism of Camden Town, while embracing the sophistication of Primrose Hill and the tranquility of Primrose House's Park. The result is a brave new neighbourhood for living, working and enjoying time out.

With architecture of the highest standard, inviting public spaces and improved connections to the local and wider area; Primrose House at Camden Goods Yard is playing a major role in NW1's future.



# THE RESIDENCES.

## Homes designed for easy living

Primrose House offers a choice of Manhattan, one, two and three bedroom apartments, arranged over fifteen storeys in a way that maximises space and light.

Each home is perfectly formed for modern day living and features flexible, open plan living spaces, spacious bedrooms and industrial chic bathroom and kitchens.



# THE REGENCY CLUB.

## Fitness and Relaxation

Entry to Primrose House is through the impressive glass-fronted foyer. Beyond it, there is an equally impressive range of residents' facilities: a wellness suite with indoor swimming pool, sauna and steam room; a residents' lounge and business centre, gym with panoramic views and three luxurious screening rooms.

### The Welcome

The contemporary foyer and lounge area provides a grand sense of arrival and entry point to the residents' facilities, designed by Tara Bernerd this is the perfect spot in which to unwind, meet with colleagues or entertain friends.



### Your Office at Camden Goods Yard

Choose between working in your stylish home office or the residents' lounge with ultra high speed Wi-Fi.



### Three Luxurious Screening Rooms

Enjoy an intimate movie experience at one of The Regency Club's three stylish screening rooms. For your viewing comfort each uniquely designed screening room comes equipped with luxurious seating, a bar and state-of-the-art sound and vision technology.



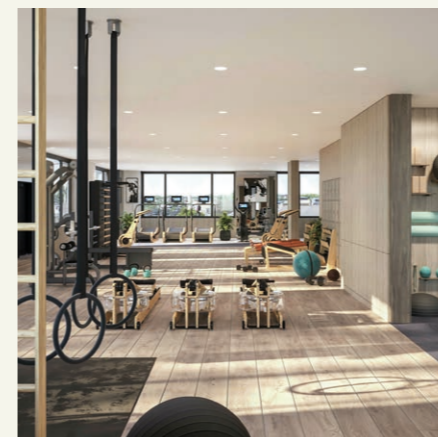
### Swimming Pool

Immerse yourself in the 18 metre infinity style pool, perfect for both relaxation and exercise. The adjoining spa with steam room and sauna provides you with a peaceful space to focus on health and wellbeing.



### Gymnasium

Achieve your fitness goals the right way in the state-of-the-art gym. An expansive, light filled space featuring the latest technology and enviable city views.



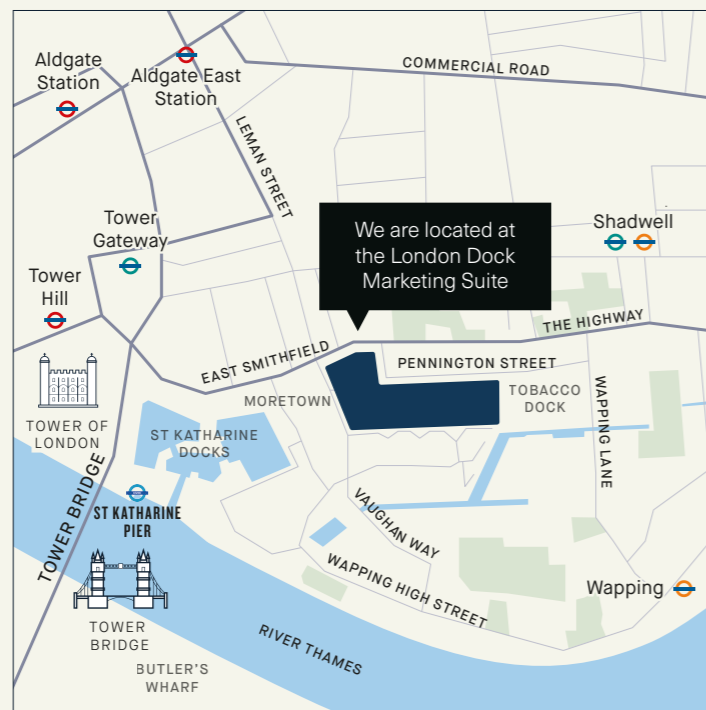
# CONTACT.

## Immersion Suite and Showhome

Our Marketing Suite will be located at London Dock until 2024, until then, come and immerse yourself in our Experience Centre.

By appointment only, at the London Dock Marketing Suite  
9 Arrival Square, Vaughan Way, London E1W 2AA.

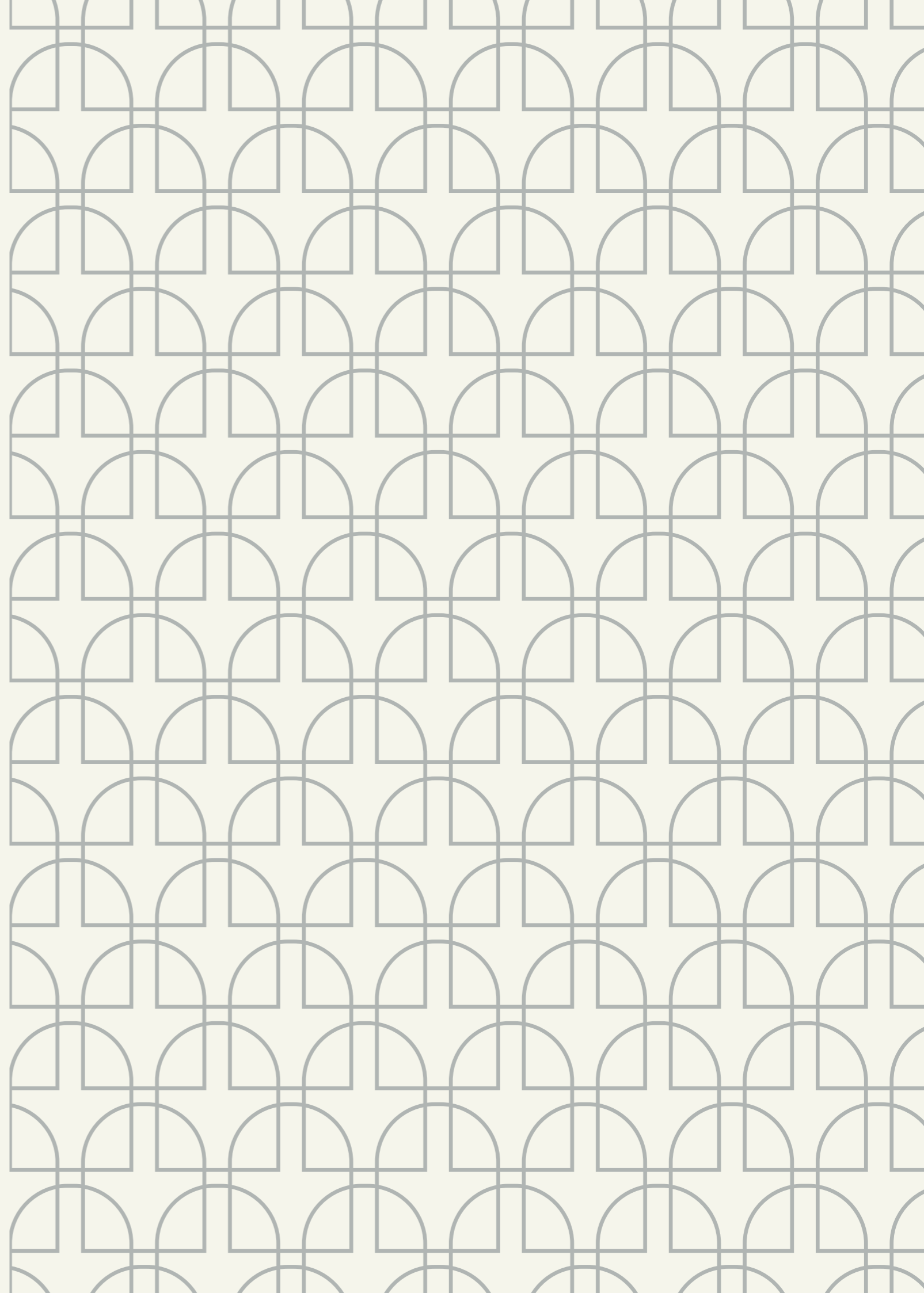
sales@camdengoodsyard.co.uk  
+44 (0)203 040 7000



Map is for illustration purposes only and not to scale.



School profile copy sourced from school websites and Ofsted reports. For further details on schools please visit individual websites. The information in this document is indicative and is intended to act as a guide only as to the finished product. Accordingly, due to St George's policy of continuous improvement, the finished product may vary from the information provided. These particulars should not be relied upon as statements of fact or representations and applicants must satisfy themselves by inspection or otherwise as to their correctness. This information does not constitute a contract or warranty. The dimensions given on plans are subject to minor variations and are not intended to be used for carpet sizes, appliance sizes or items of furniture. Primrose House, Camden Goods Yard is a marketing name and will not necessarily form part of the approved postal address. Planning Permission number 2020/3116/P. Granted by Camden Council. Purchasers are acquiring an apartment with a new 999-year leasehold from 2023. Like any investment, purchasing uncompleted properties situated outside Hong Kong is complicated and contains risk. You should review all relevant information and documents carefully before making a purchase decision. If in doubt, please seek independent professional advice before making a purchase decision. H054/41CA/0623



CAMDENGOODSYARD.CO.UK