

CAMDEN  
GOODS YARD  
LONDON NW1

# YOUR NEIGHBOURHOOD

MADE TO ORDER  
CUSTOM BUILT  
**MAD MATTERS**  
CAMDEN  
EST 2004 - LONDON

PSYLO

Duckie

VINTAGE BUNCH

Fantasy & Gothic  
Giftware





**St George**  
Designed for life



CAMDEN  
GOODS YARD  
LONDON NW1

# CONTENTS

2	<u>Introduction</u>	
4	<u>Your Neighbourhood</u>	
16	<u>Getting Around</u>	
18	<u>Everyday Essentials</u>	
22	<u>Eating Out</u>	
28	<u>Bars</u>	
34	<u>Shopping</u>	
40	<u>Entertainment</u>	
46	<u>Attractions</u>	
52	<u>Education</u>	
60	<u>Green Spaces</u>	
66	<u>Contact</u>	

# NW1. YOUR LONDON. YOUR NEIGHBOURHOOD.

## A Place for Everyone

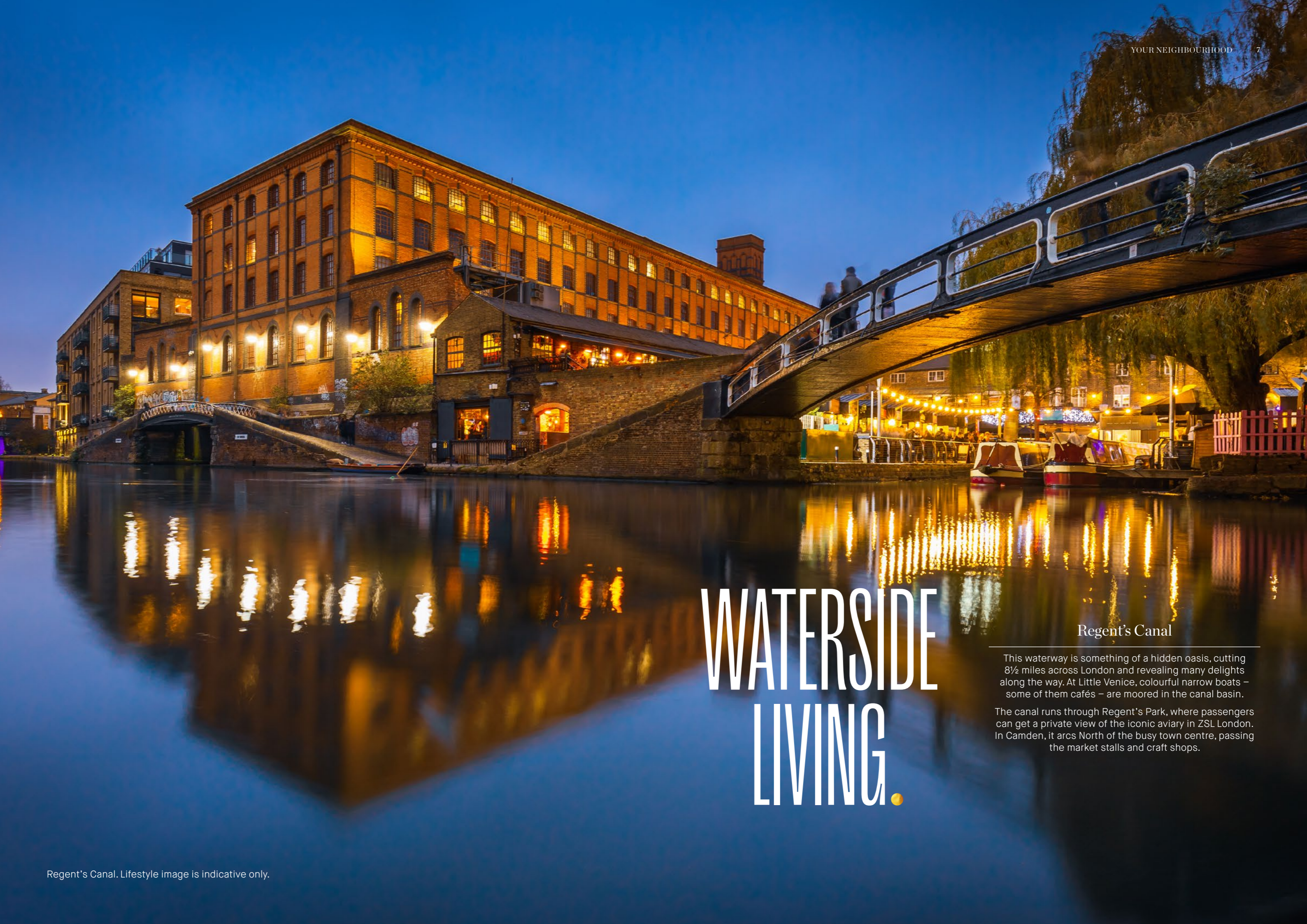
---

The urban spirit of Camden Town, the bohemian chic of Primrose Hill, the airy green acres of Regent's Park; all facets of NW1, your neighbourhood and the setting for Camden Goods Yard.

# A RICH HISTORY

## The Making of Camden Town

Camden Town started life as a Georgian suburb and some of its elegant houses still stand. The neighbourhood was shaped by the canal and the railway, attracting more residents, particularly the artisans and professionals. In the 19th century, big shops and theatres added to Camden Town's attractions and by the mid 20th century it had become a lively, cosmopolitan part of London; a hub for the creative arts, media, fashion and music.



# WATERSIDE LIVING.

## Regent's Canal

This waterway is something of a hidden oasis, cutting 8½ miles across London and revealing many delights along the way. At Little Venice, colourful narrow boats – some of them cafés – are moored in the canal basin.

The canal runs through Regent's Park, where passengers can get a private view of the iconic aviary in ZSL London. In Camden, it arcs North of the busy town centre, passing the market stalls and craft shops.

# CULTURE.

## Learn and Be Inspired

London's many cultural highlights include world famous museums, galleries, libraries and concert halls.



**Thomas Becket murder and the making of a saint**  
20 May - 22 August 2021

**Nero the man behind the myth**  
27 May - 24 October 2021

The British Museum. Lifestyle image is indicative only.

and let thy feet millenniums hence be set in midst of knowledge

# CONNECTIONS.

## You're on Your Way

The nearest tube station to Camden Goods Yard, Chalk Farm, is a 6-minute walk while Camden Town is only 9\*. Both in Zone 2 and on the Northern line and also part of the night tube service, which runs Friday and Saturday nights; excellent if you are travelling into the West End for the theatre, drinks or dinner.

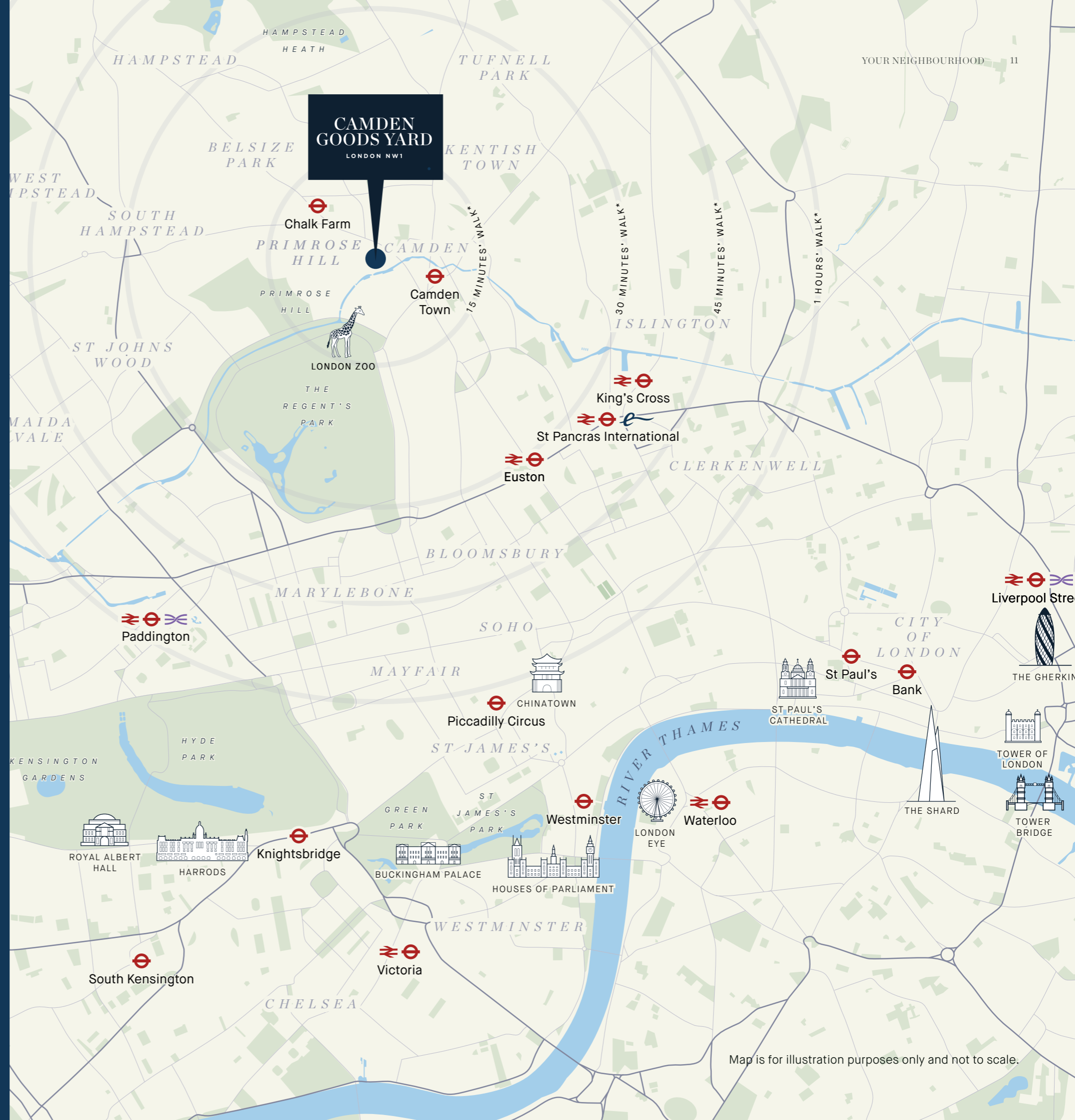
## Key Journey Distances



## Travel Information

From Camden Goods Yard	Distance	Stops
Euston	1.5 miles	1 stop
King's Cross St Pancras International	1.9 miles	2 stops
Hampstead	1.8 miles	3 stops
Oxford Circus	2.5 miles	3 stops
Bank	4.9 miles	6 stops
Edgware Road	3.4 miles	7 stops
Paddington	3.7 miles	8 stops
Waterloo	4.1 miles	9 stops
Heathrow Airport (Terminal 5)	19.6 miles	24 stops

Travel times are approximate only. Source: Google Maps and Citymapper. Underground times calculated from Camden Town Station.



Map is for illustration purposes only and not to scale.



# GREEN SPACES.

## Find Your Oasis in The City

---

London is one of the world's greenest capital cities with 47% of the city dedicated to green open spaces\*.

Lifestyle image is indicative only. Source: Savills.

\*Source: Savills





**CAMDEN  
GOODS YARD**  
LONDON NW1

**1 Bloomsbury Square Gardens**

14 Great Russell Street  
Bloomsbury  
London SE1 1RQ  
W [camden.gov.uk/parks](http://camden.gov.uk/parks)

**2 Camden Square Gardens**

Camden Square  
London NW1 9UY  
W [camden.gov.uk/parks](http://camden.gov.uk/parks)

**3 Canteloves Gardens**

234 Camden Road  
London NW1 9BY  
W [camden.gov.uk/parks](http://camden.gov.uk/parks)

**4 College Gardens**

Royal College Street  
London NW1 9NB  
W [parksandgardens.org](http://parksandgardens.org)

**5 Green Park**

Constitution Hill  
London SW1A 2BJ  
W [royalparks.org.uk](http://royalparks.org.uk)  
T +44 (0)300 061 2000

**6 Hampstead Heath**

Hampstead Heath,  
London NW3 1BP  
W [hampsteadheath.net](http://hampsteadheath.net)  
E [hampstead.heath@cityoflondon.gov.uk](mailto:hampstead.heath@cityoflondon.gov.uk)  
T +44 (0)20 7332 3322

**7 Hyde Park**

Hyde Park  
London W2 2UH  
W [royalparks.org.uk](http://royalparks.org.uk)  
T +44 (0)300 061 2114

**8 Kensington Gardens**

West Carriage Drive  
London W2 2UH  
W [royalparks.org.uk](http://royalparks.org.uk)  
T +44 (0)300 061 2114

**9 Primrose Hill**

Primrose Hill  
London NW1 8UR  
W [royalparks.org.uk](http://royalparks.org.uk)  
T +44 (0)300 061 2300

**10 Regents Park**

Regent's park  
London NW1 4NU  
W [royalparks.org.uk](http://royalparks.org.uk)  
E [regents@royalparks.org.uk](mailto:regents@royalparks.org.uk)  
T +44 (0)300 061 2300

**11 Rochester Terrace Gardens**

Rochester Terrace, Canteloves  
London NW1 9  
W [camden.gov.uk/parks](http://camden.gov.uk/parks)

Map is for illustration purposes only and not to scale.



## Regent's Park

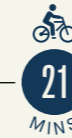


Regent's park  
London NW1 4NU

W [royalparks.org.uk](http://royalparks.org.uk)  
T +44 (0)300 061 230

The park is a serene spot in busy Central London, whose attractions include the lake, Queen Mary's Gardens with its amazing roses, and the Open Air Theatre, perfect on a balmy evening. Regent's Canal crosses the park where you can take a boat trip past the Zoo, or stroll the towpath from Camden to Little Venice.

## Hyde Park



Hyde Park  
London W2 2UH

W [royalparks.org.uk](http://royalparks.org.uk)  
T +44 (0)300 061 230

Set right in the heart of London, Hyde Park offers both world-class events and concerts together with plenty of quiet places to relax and unwind. Brave an open water swim in the Serpentine, have a go at tennis, horse riding or join the many joggers enjoying the open air.



## Primrose Hill



Primrose Hill  
London NW1 8UR

W [royalparks.org.uk](http://royalparks.org.uk)  
T +44 (0)300 061 230

Part of Regent's Park, Primrose Hill is an the ideal spot to enjoy the panoramic views across the city. 63-metres above sea level and the crest of the hill is one of six protected viewpoints in London. Even the trees are kept low so as to not obscure the views.



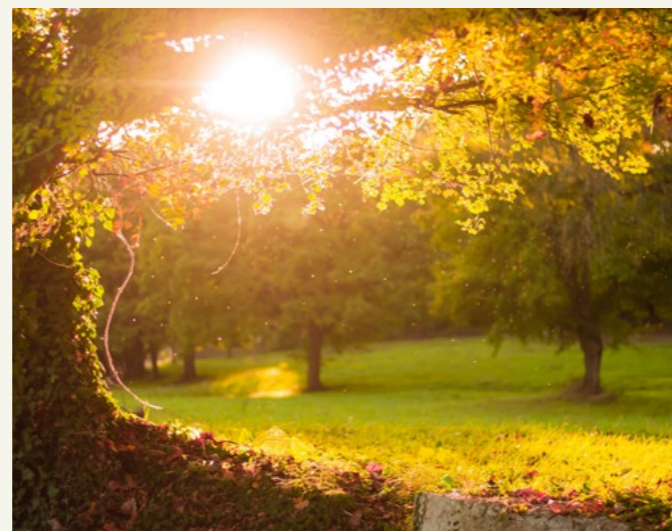
## College Gardens



Royal College Street  
London NW1 9NB

W [parksandgardens.org](http://parksandgardens.org)

One of London's many pocket parks, College Gardens is a triangular site overlooked by 19th century terraces and 20th century buildings. The gardens landscaping includes great plane trees, a species common in the capital, and a historic drinking fountain erected in 1876.



## Hampstead Heath



Hampstead Heath,  
London NW3 1BP

W [hampsteadheath.net](http://hampsteadheath.net)

A huge open space spanning 800 acres, consisting of many diverse areas such as Parliament Hill and the grounds of Kenwood House. In between are wild meadows and woods and some spectacular views. For hardy swimmers there are open air bathing ponds.



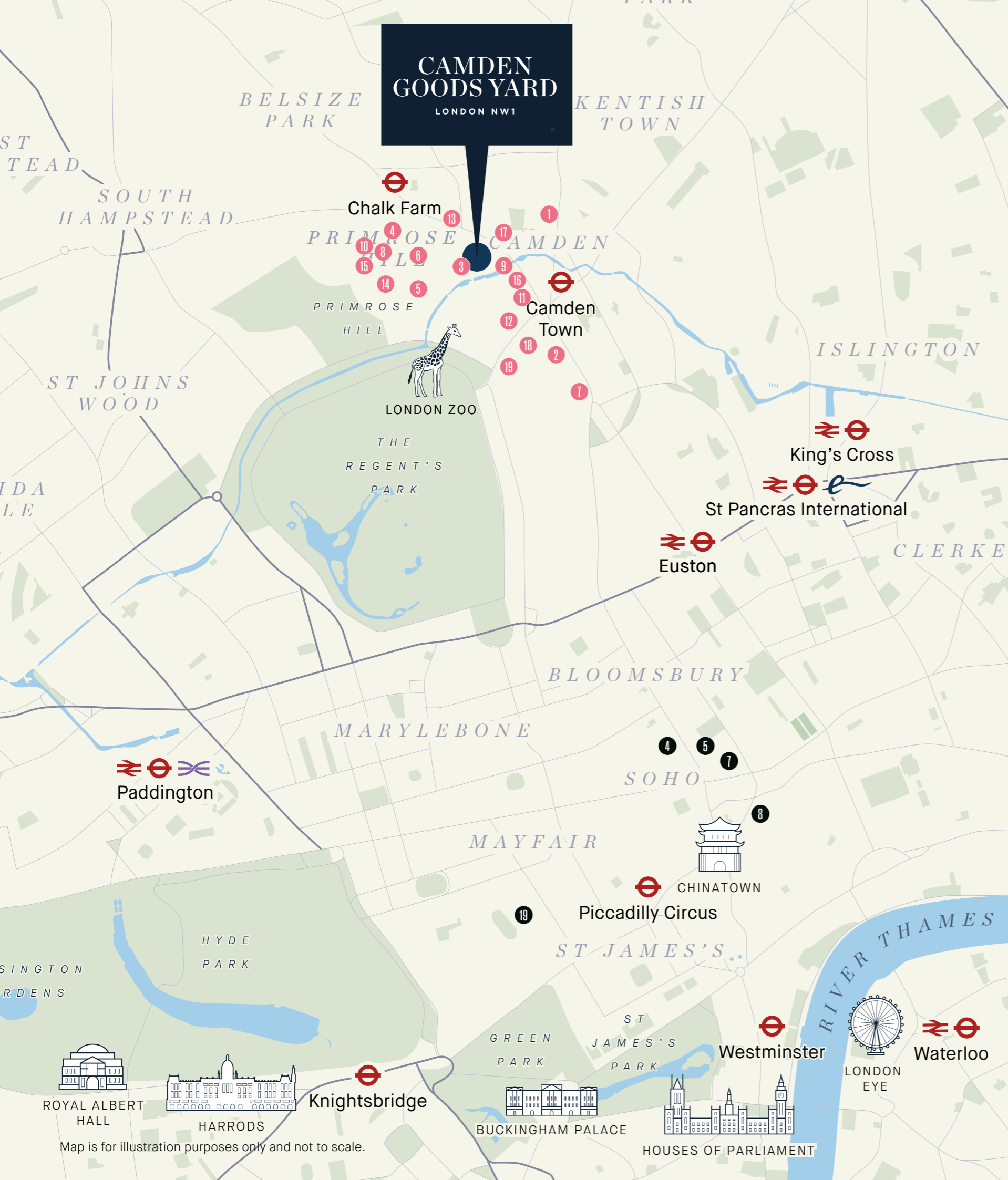
# EATING OUT.

## World-Cuisine Made Local

---

From fine dining to casual brunches, quiet and elegant to lively and musical; the local eateries cater for every occasion, serving food from many countries and cuisines.

EATING OUT.



**CAMDEN  
GOODS YARD**  
LONDON NW1

- 1 Bintang**  
93 Kentish Town Road  
London NW1 8NY  
W [bintangrestaurant.co.uk](http://bintangrestaurant.co.uk)  
E [bintangnw1@gmail.com](mailto:bintangnw1@gmail.com)  
T +44 (0)20 7267 2197
- 3 Café Chula**  
75–89 Lower Walkway, Camden Lock Place  
London NW1 8AF  
W [cafechula.co.uk](http://cafechula.co.uk)  
E [em.cafechula@gmail.com](mailto:em.cafechula@gmail.com)  
T +44 (0)20 7284 1890
- 4 Greenberry Cafe**  
101 Regent's Park Road  
London NW1 8UR  
W [greenberrycafe.co.uk/](http://greenberrycafe.co.uk/)  
E [reservations@greenberrycafe.co.uk](mailto:reservations@greenberrycafe.co.uk)  
T +44 (0)20 7483 3765
- 5 L'Absinthe**  
40 Chalcot Road, Camden Town  
London NW1 8LS  
W [labsinthe.co.uk](http://labsinthe.co.uk)  
T +44 (0)20 7483 4848
- 6 The Lansdowne**  
90 Gloucester Avenue  
London NW1 8HX  
W [thelansdownepub.co.uk](http://thelansdownepub.co.uk)  
T +44 (0)20 7483 0409
- 7 La Patagonia**  
31 Camden High Street  
London NW1 7JE  
W [lapatagonia.co.uk](http://lapatagonia.co.uk)  
E [mail@lapatagonia.co.uk](mailto:mail@lapatagonia.co.uk)  
T +44 (0)20 7388 9861
- 8 Lemonia**  
89 Regent's Park Road  
London NW1 8UY  
W [lemonia.co.uk](http://lemonia.co.uk)  
T +44 (0)20 7586 7454
- 9 Lockside Camden**  
75–89 Upper Walkway, Camden Lock Place  
London NW1 8AF  
W [camdenlockside.co.uk](http://camdenlockside.co.uk)  
T +44 (0)20 7284 0007
- 10 Manna**  
4 Erskine Road, Primrose Hill  
London NW3 3AP  
W [mannav.com](http://mannav.com)  
T +44 (0)20 7722 8028
- 11 Mildreds Camden**  
9 Jamestown Road  
London NW1 7BW  
W [mildreds.co.uk](http://mildreds.co.uk)  
E [hello@mildreds.co.uk](mailto:hello@mildreds.co.uk)  
T +44 (0)20 7482 4200
- 12 Namaaste Kitchen**  
64 Parkway  
London NW1 7AH  
W [namaastekitchen.co.uk](http://namaastekitchen.co.uk)  
E [info@namaastekitchen.co.uk](mailto:info@namaastekitchen.co.uk)  
T +44 (0)20 7485 5977
- 13 Near & Far Camden**  
48 Chalk Farm Road,  
Camden NW1 8AJ  
W [nearandfarlondon.com/camden](http://nearandfarlondon.com/camden)  
E [info@nearandfarcamden.com](mailto:info@nearandfarcamden.com)  
T +44 (0)203 983 7250
- 14 Odettes**  
130 Regent's Park Road, Primrose Hill  
London NW1 8XL  
W [odettesprimrosehill.com](http://odettesprimrosehill.com)  
T +44 (0)20 7586 8569
- 15 Oka**  
71 Regent's Park Road, Primrose Hill  
London NW1 8UY  
W [okarestaurant.co.uk/primrose-hill](http://okarestaurant.co.uk/primrose-hill)  
T +44 (0)20 7483 2072
- 16 Poppies Fish & Chips**  
30 Hawley Crescent  
London NW1 8NP  
W [poppiesfishandchips.co.uk/locations/camden](http://poppiesfishandchips.co.uk/locations/camden)  
T +44 (0)20 7267 0440
- 17 Porkys BBQ**  
18A Chalk Farm Road  
London NW1 8AG  
W [porkys.co.uk/camden](http://porkys.co.uk/camden)  
E [camden@porkys.co.uk](mailto:camden@porkys.co.uk)  
T +44 (0)20 7428 0998
- 18 Primrose Bakery**  
69 Gloucester Avenue,  
London NW1 8LD  
W [primrose-bakery.co.uk](http://primrose-bakery.co.uk)  
T +44 (0)20 7483 4222
- 18 Sushi Waka**  
75 Parkway  
London NW1 7PP  
T +44 (0)20 7482 2036
- 19 York & Albany**  
127–129 Parkway  
London NW1 7PS  
W [gordonramsayrestaurants.com/york-and-albany](http://gordonramsayrestaurants.com/york-and-albany)  
E [yorkandalbany@gordonramsay.com](mailto:yorkandalbany@gordonramsay.com)  
T +44 (0)20 7592 1227
- 14 Michael Nadra**  
42 Gloucester Avenue,  
London NW1 8JD  
W [restaurant-michaelnadra.co.uk](http://restaurant-michaelnadra.co.uk)  
T +44 (0)20 7722 2800

Map is for illustration purposes only and not to scale.

## Poppies

30 Hawley Crescent,  
Camden Town, London NW1 8NP

W [poppiesfishandchips.co.uk](http://poppiesfishandchips.co.uk)  
T +44 (0)20 7267 0440

Poppie's is renowned for authenticity and it's little wonder, with born and bred East end proprietor, Pat 'Pop' Newland, at the helm. Pop's career in the fish and chip business started in 1952 when, aged 11, he got a job on Roman Road cutting up copies of The Daily Mirror to wrap fish and chips in. The shops are filled with retro memorabilia, the uniforms channel a 1950s vibe and the music is tailored to each shop. Dining in one of Pops restaurants is an experience with retro vibes and iconic looks from the decades.



## Lockside Camden

75–89 Upper Walkway  
Camden Lock Place  
London NW1 8AF

W [camdenlockside.co.uk](http://camdenlockside.co.uk)  
T +44 (0)20 7284 0007

Overlooking Camden Market's West Yard and the picturesque Regent's Canal, Lockside Camden is the perfect setting for anything from lunch with friends to a romantic dinner for two. Enjoy outstanding food and cocktails to a soundtrack of Latin beats, hip hop, RnB and 90s party classics.



## Odette's Restaraunt

130 regents Park Road NW1 8XL

W [odettesprimrosehill.com](http://odettesprimrosehill.com)  
T +44 (0)20 7586 8569

One of the London's original dining rooms, having opened in 1978, Odette's is run and owned by chef Patron Bryn Williams. Recognised as an iconic neighbourhood restaurant, Odette's attracts illustrious patrons from the worlds of art and theatre for over three decades.



## Michael Nadra

42 Gloucester Avenue, London  
NW1 8JD

W [restaurant-michaelnadra.co.uk](http://restaurant-michaelnadra.co.uk)  
T +44 (0)20 7722 2800

Chef Michael Nadra's restaurant is tucked away in Primrose Hill, just a short stroll away from Regent's Canal and Camden. Offering modern British food in a unique space complete with a bright conservatory and bar, intimate fireplace, Grade II listed horse tunnel and outdoor terrace.



## Primrose Bakery

69 Gloucester Avenue, London  
NW1 8LD

W [primrose-bakery.co.uk](http://primrose-bakery.co.uk)  
T +44 (0)20 7483 4222

A popular bakery and family-run business where everything is hand iced and baked in small batches to really give the essence of simple old fashioned cooking.



## York and Albany

127–129 Parkway, London NW1 7PS

W [gordonramsayrestaurants.com/york-and-albany](http://gordonramsayrestaurants.com/york-and-albany)  
E [yorkandalbany@gordonramsay.com](mailto:yorkandalbany@gordonramsay.com)  
T +44 (0)20 7592 1227

Gordon Ramsay's York and Albany is home to a cosy restaurant, hotel, terrace and pizzeria; all perfectly positioned on the edge of Regent's Park and close to the buzz of Camden.





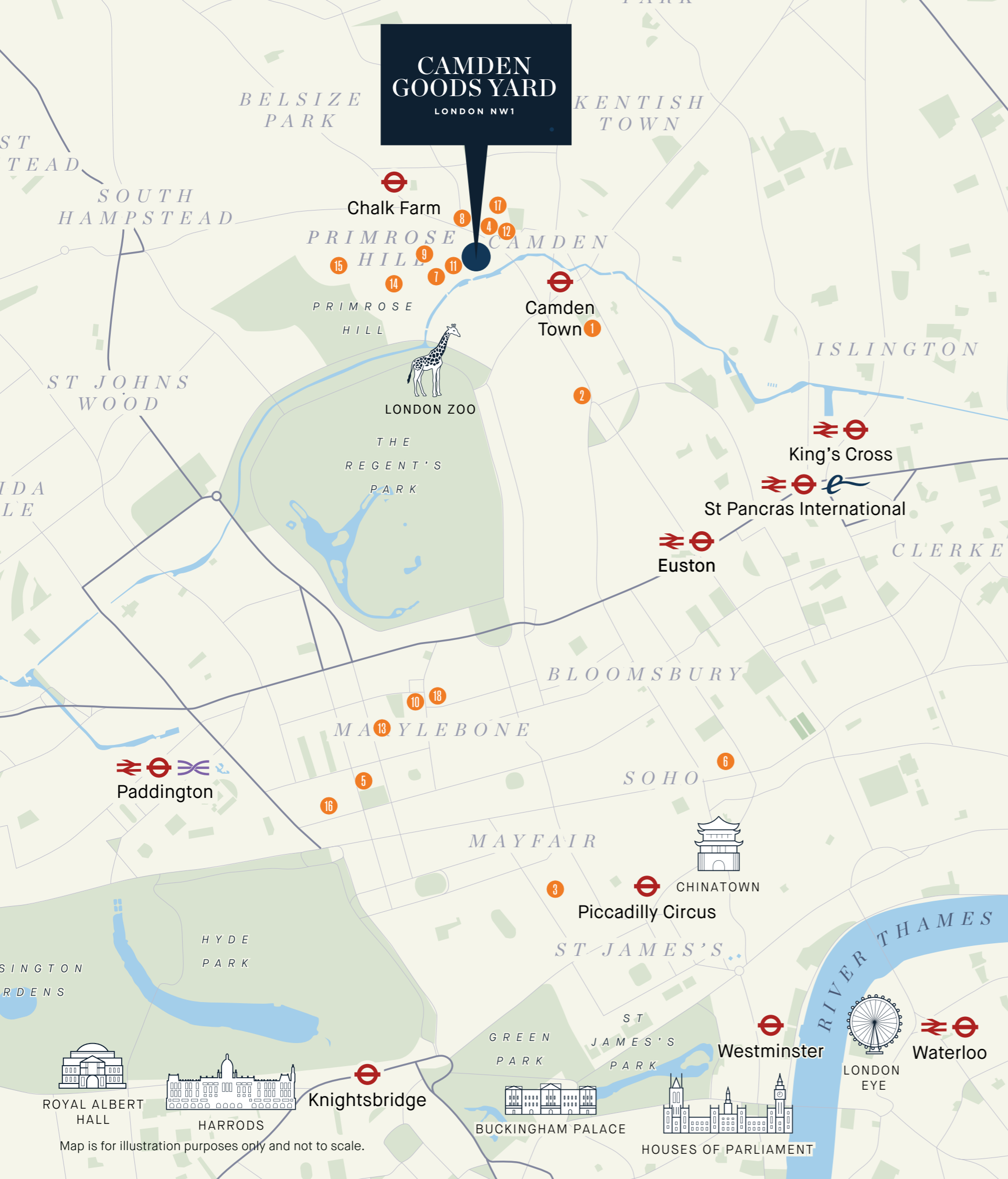
# BARS.

## Pour Yourself a Great Night

Camden and Primrose Hill are renowned for their drinking spots, which cover every mood from raucous party nights to sophisticated cocktail evenings.

**BARS.**

**CAMDEN GOODS YARD**  
LONDON NW1



- 1 BrewDog**  
113 Bayham Street  
London NW1 0AG  
W [brewdog.com/uk/bars/uk/brewdog-camden](http://brewdog.com/uk/bars/uk/brewdog-camden)  
E [camdenbar@brewdog.com](mailto:camdenbar@brewdog.com)  
T +44 (0)20 7284 4626
- 2 The Blues Kitchen**  
111-113 Camden High Street  
London NW1 7JN  
W [theblueskitchen.com/camden](http://theblueskitchen.com/camden)  
T +44 (0)20 7387 5277
- 2 BYOC**  
11-13 Camden High Street,  
Camden Town, London NW1 7JE  
W [byoc.co.uk](http://byoc.co.uk)  
T +44 (0)20 3441 2424
- 3 Cahoot**  
13 Kingly Court, Carnaby  
London W1B 5PW  
W [cahoots-london.com](http://cahoots-london.com)  
E [highspirits@cahoots-london.com](mailto:highspirits@cahoots-london.com)  
T +44 (0)20 7352 6200
- 4 Camden Assembly**  
49 Chalk Farm Road, Chalk Farm  
London NW1 8AN  
W [camdenassembly.com](http://camdenassembly.com)  
E [info@camdenassembly.com](mailto:info@camdenassembly.com)  
T +44 (0)20 7424 0800
- 5 Clarette**  
44 Blandford Street  
London W1U 7HS  
W [clarettelondon.com](http://clarettelondon.com)  
T +44(0)20 3019 7750
- 6 The Coral Room**  
16-22 Great Russell Street  
London WC1B 3NN  
W [thecoralroom.co.uk](http://thecoralroom.co.uk)  
E [info@thecoralroom.co.uk](mailto:info@thecoralroom.co.uk)  
T +44 (0)20 7347 1221
- 7 The Engineer**  
65 Gloucester Avenue, Chalk Farm  
London NW1 8JD  
W [theengineerprimrosehill.co.uk](http://theengineerprimrosehill.co.uk)  
T +44 (0)20 7483 1890
- 8 Joe's Bar**  
78-79 Chalk Farm Road, Chalk Farm  
London NW1 8AR  
W [joescamden.co.uk](http://joescamden.co.uk)  
E [anthony@joescamden.co.uk](mailto:anthony@joescamden.co.uk)  
T +44 (0)20 7018 2168
- 9 The Lansdowne Pub and Dining Room**  
90 Gloucester Avenue  
London NW1 8HX  
W [thelansdownepub.co.uk](http://thelansdownepub.co.uk)  
T +44 (0)20 7483 0409
- 10 The Marylebone**  
93 Marylebone High Street  
London W1U 4RE  
W [themarylebonelondon.com](http://themarylebonelondon.com)  
T +44(0)20 7935 4373
- 11 Michael Nadra**  
42 Gloucester Avenue, Primrose Hill  
London NW1 8JD  
W [restaurant-michaelnadra.co.uk](http://restaurant-michaelnadra.co.uk)  
E [primrose@restaurant-michaelnadra.co.uk](mailto:primrose@restaurant-michaelnadra.co.uk)  
T 44 (0) 20 7722 2800
- 12 Near and Far**  
48 Chalk Farm Road, Chalk Farm  
London NW1 8AJ  
W [nearandfarlondon.com](http://nearandfarlondon.com)  
T +44 (0)20 7267 2700
- 13 Purl London**  
50-54 Blandford Street  
London W1U 7HX  
W [purl-london.com](http://purl-london.com)  
T +44(0)20 7935 0835
- 14 The Princess of Wales**  
22 Chalcot Road  
London NW1 8LL  
W [lovetheprincess.com](http://lovetheprincess.com)  
T +44 (0)20 7722 0354
- 15 The Queens**  
49 Regent's Park Road  
London NW1 8XD  
W [thequeensprimrosehill.co.uk](http://thequeensprimrosehill.co.uk)  
T +44 (0)20 7586 0408
- 16 Seymour's Parlour**  
28-30 Seymour Street  
London W1H 7JB  
W [thezettertownhouse.com](http://thezettertownhouse.com)  
T +44(0)20 7324 4544
- 17 Spiritual Bar**  
4-6 Ferdinand Street, Chalk Farm  
London NW1 8ER  
W [spiritualrecords.co.uk](http://spiritualrecords.co.uk)
- 18 31 Below**  
31 Marylebone High Street  
London W1U 4PP  
W [31below.co.uk](http://31below.co.uk)  
T +44(0)20 3912 2007

Map is for illustration purposes only and not to scale.

## BrewDog



113 Bayham Street  
London NW1 0AG

W [brewdog.com/uk/bars/uk/brewdog-camden](http://brewdog.com/uk/bars/uk/brewdog-camden)  
E [camdenbar@brewdog.com](mailto:camdenbar@brewdog.com)  
T +44 (0)20 7284 4626

BrewDog Camden serves an incredible array of international craft brews and BrewDog favourites across two floors, with a menu of burgers, hot dogs and wings to match.



## Camden Assembly



49 Chalk Farm Road  
Chalk Farm  
London NW1 8AN

W [camdenassembly.com](http://camdenassembly.com)  
E [info@camdenassembly.com](mailto:info@camdenassembly.com)  
T +44 (0)20 7424 0800

One of Camden Town's most famous pubs, whose clientele revel in live music including the Saturday 'crush', club nights and parties with excellent food and drink.



## The Blues Kitchen



111-113 Camden High Street  
London NW1 7JN

W [theblueskitchen.com](http://theblueskitchen.com)  
T +44 (0)20 7267 2197

The Blues Kitchen serves up live music, cocktails and New Orleans style food which includes mouth-watering dishes such as cajun popcorn squid, red pepper and bean chilli, St Louis pork ribs and hot chicken buffalo sandwich.

## The Coral Room



16-22 Great Russell Street  
London WC1B 3NN

W [thecoralroom.co.uk](http://thecoralroom.co.uk)  
E [info@thecoralroom.co.uk](mailto:info@thecoralroom.co.uk)  
T +44 (0)20 7347 1221

The Coral Room is like an exquisite country house that's found its way to the city, ornate and spectacular with a pretty outdoor terrace. In the evenings it is a lively cocktail bar serving elegant snacks and small dishes along with the drinks.



## BYOC



11-13 Camden High Street,  
Camden Town, London NW1 7JE

W [byoc.co.uk](http://byoc.co.uk)  
T +44 (0)20 3441 2424

BYOC Camden is a cosy cocktail bar that sells no alcohol. Inspired by the Prohibition-era speakeasy and the birth of cocktail culture in the 1920s, patrons bring spirits of their choice. A booking guarantees seats and the personal attention of a first class mixologist who creates unique cocktails using the finest quality syrups, bitters, purées, herbs, fruits and spices. Many of these "secret" ingredients are prepared from scratch.





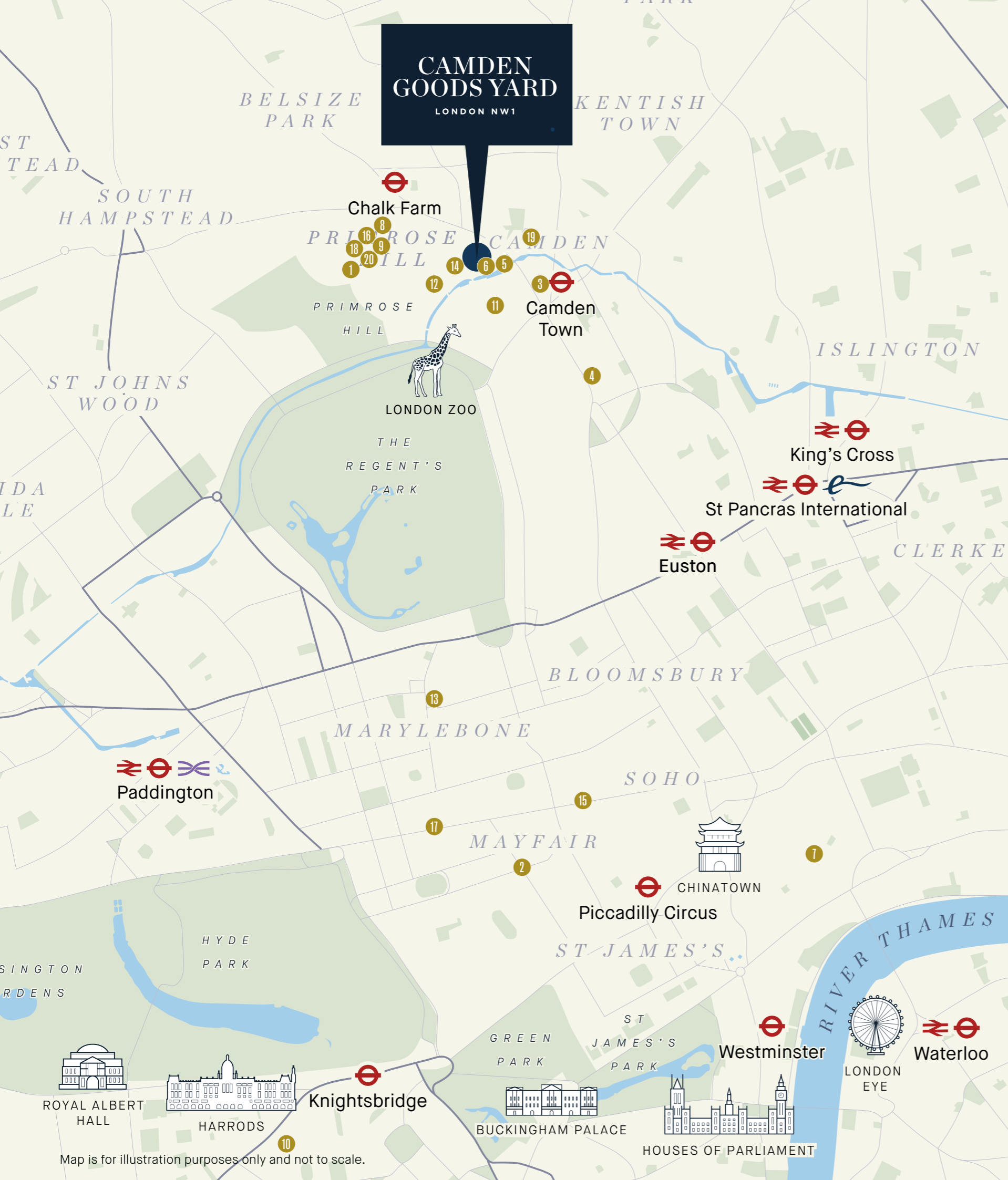


# SHOPPING.

## Keeping it Local

Around Camden are many different, contrasting areas to shop. Camden is known for its markets, Primrose Hill for its fashion boutiques and coffee shops, and Marylebone Village for upmarket designers and jewellers.

# SHOPPING.



- 1 Anna**  
 126 Regent's Park Road  
 London NW1 8XL  
 W [shopatanna.com](http://shopatanna.com)  
 T +44 (0)20 7483 0411
- 2 Bond Street**  
 Bond Street  
 London W1S 1SP  
 W [bondstreet.co.uk](http://bondstreet.co.uk)
- 3 Buck Street Market**  
 192, 198 Camden High Street  
 London NW1 8QP  
 W [buckstreet.market](http://buckstreet.market)  
 T +44 (0)20 3763 9900
- 4 Camden High Street**  
 22 Camden High Street  
 London NW1 0JH  
 W [camden.gov.uk](http://camden.gov.uk)  
 E [marketsteam@camden.gov.uk](mailto:marketsteam@camden.gov.uk)  
 T +44 (0)20 7974 4444
- 5 Camden Lock Village**  
 54-56 Camden Lock Place  
 London NW1 8AF  
 T +44 (0)20 7485 7963
- 6 Camden Market**  
 Camden Lock Market  
 Unit 215—216 Chalk Farm Road  
 London NW1 8AF  
 W [camdenmarket.com](http://camdenmarket.com)  
 E [info@camdenmarket.com](mailto:info@camdenmarket.com)  
 T +44 (0)20 3763 9900
- 7 Covent Garden**  
 Covent Garden  
 London WC2E 8RF  
 W [coventgarden.london](http://coventgarden.london)  
 E [helpdesk@coventgardenmarket.co.uk](mailto:helpdesk@coventgardenmarket.co.uk)  
 T +44 (0)20 7420 5856
- 8 Cowshed**  
 115—117 Regent's Park Road  
 London NW1 8UR  
 W [cowshed.com](http://cowshed.com)  
 T +44 (0)20 3725 2777
- 9 Graham & Green**  
 164 Regent's Park Road  
 London NW1 8XN  
 W [grahamandgreen.co.uk](http://grahamandgreen.co.uk)  
 T +44 (0)20 7586 2960
- 10 Harrods**  
 Brompton Road  
 London SW1X 7XL  
 W [harrods.com](http://harrods.com)  
 T +44 (0)20 7730 1234
- 11 Inverness Street Market**  
 Inverness Street  
 London NW1 7HB  
 W [camden.gov.uk/markets](http://camden.gov.uk/markets)  
 E [marketsteam@camden.gov.uk](mailto:marketsteam@camden.gov.uk)  
 T +44 (0)20 7974 2475
- 12 Mandarin Stone**  
 71—73 Gloucester Avenue  
 London NW1 8LD  
 W [mandarinstone.com](http://mandarinstone.com)
- 13 Marylebone Village**  
 Marylebone High Street  
 London W1U 4PE
- 14 Melrose and Morgan**  
 42 Gloucester Avenue  
 London NW1 8JD  
 W [melroseandmorgan.com](http://melroseandmorgan.com)  
 T +44 (0)20 7722 0011
- 15 Oxford Circus**  
 Oxford Street, Soho  
 London W1D 1BS  
 W [oxfordstreet.co.uk](http://oxfordstreet.co.uk)
- 16 Primrose Hill**  
 160 Regent's Park Road  
 London NW1 8XN  
 W [pressprimrosehill.com](http://pressprimrosehill.com)  
 T +44 (0)20 7449 0081
- 17 Selfridges**  
 400 Oxford Street  
 London W1C 1JS  
 W [selfridges.com](http://selfridges.com)  
 E [customerservices@selfridges.com](mailto:customerservices@selfridges.com)  
 T +44 (0)20 7160 6222
- 18 Space NK**  
 156 Regent's Park Road  
 London NW1 8XN  
 W [spacenk.com](http://spacenk.com)  
 T +44 (0)20 7586 9314
- 19 Stables Market**  
 842 Chalk Farm Road  
 London NW1 8BF  
 W [camdenmarket.com](http://camdenmarket.com)  
 E [info@camdenmarket.com](mailto:info@camdenmarket.com)  
 T +44 (0)7351 531235
- 20 Yeomans**  
 152 Regent's Park Road  
 London NW1 8XN  
 W [yeomansflowers.co.uk](http://yeomansflowers.co.uk)  
 T +44 (0)20 7722 4281

Map is for illustration purposes only and not to scale.

# SHOPPING

## Oxford Circus

Oxford Street, Soho  
London W1D 1BS

W [oxfordstreet.co.uk](http://oxfordstreet.co.uk)

Two of London's best known shopping streets. Oxford Street is famous for Selfridges and John Lewis. Regent Street is lined with shops offering fashion, technology, jewellery, sportswear, accessories, as well as the quirky Liberty store and Hamley's toy shop.



## Primrose Hill

Primrose Hill  
London W1D 1BS

Primrose Hill has an upmarket village vibe, where the typical shops are designer boutiques, beauty salons, delicatessens, chic florists, furniture and homeware shops and independent bookstores.



## Stables Market

842 Chalk Farm Road  
London NW1 8BF

W [camdenmarket.com](http://camdenmarket.com)  
E [info@camdenmarket.com](mailto:info@camdenmarket.com)  
T +44 (0)7351 531235

The market is named after the stables that once housed the horses working on the canal. After its recent spruce-up, Stables Market still has a bohemian feel to it; selling vintage gifts, antiques and furniture. If you get hungry, there are plenty of food stalls too.



## Camden High Street

Camden High Street  
London NW1 0JH

W [camden.gov.uk](http://camden.gov.uk)  
E [marketsteam@camden.gov.uk](mailto:marketsteam@camden.gov.uk)  
T +44 (0)20 7974 4444

Bookended by Camden Town and Mornington Crescent tube stations, Camden High Street is busy and bustling with all the essential shops and services. Supermarkets, takeaways, banks, hair salons: they are all here.



## Camden Market

1 Camden Lock Market  
Unit 215 - 216 Chalk Farm  
Road, London NW1 8AF

W [camdenmarket.com](http://camdenmarket.com)  
E [info@camdenmarket.com](mailto:info@camdenmarket.com)  
T +44 (0)20 3763 9900

The original, quintessentially Camden market has over 1,000 shops, stalls, bars and cafés. It was one of London's first crafts and antiques markets, and is still the principle market for crafts, and is the place to choose handmade, original gifts and souvenirs.



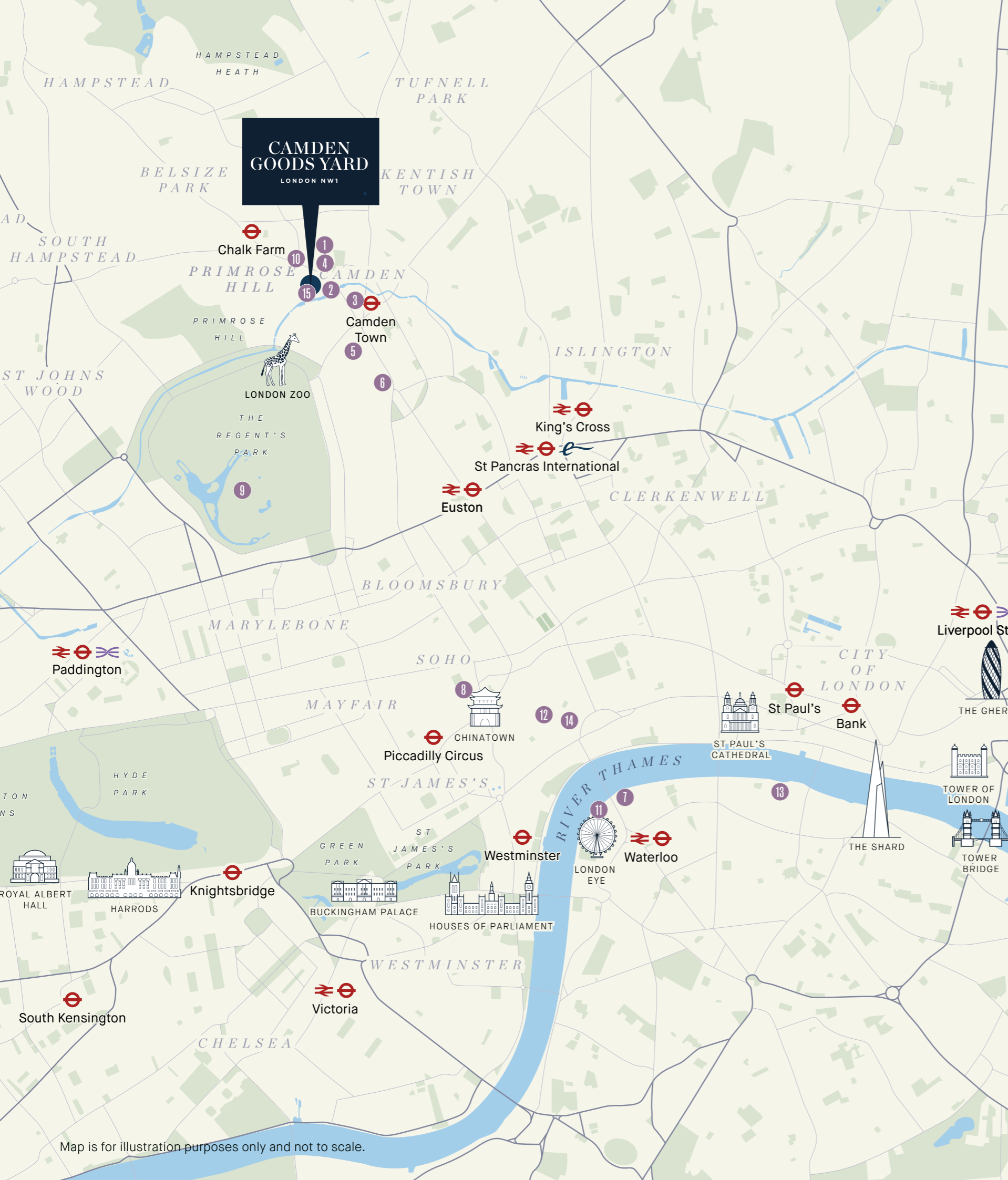


# ENTERTAINMENT.

## What's on in The Area?

---

Drama, jazz, soul, spoken word and stand-up comedy all feature in Camden's lively entertainment scene.



Map is for illustration purposes only and not to scale.

- 1 Camden Assembly**  
 49 Chalk Farm Road, Chalk Farm  
 London NW1 8AN  
 W camdenassembly.com  
 E info@camdenassembly.com  
 T +44 (0)20 7424 0800
- 2 Dingwalls**  
 East Yard, 11 Camden Lock Place  
 London NW1 8AL  
 W dingwalls.com  
 T +44 (0)20 7428 5929
- 3 Electric Ballroom**  
 184 Camden High Street  
 London NW1 8QP  
 W electricballroom.co.uk  
 E admin@electricballroom.co.uk  
 T +44 (0)20 7485 9006
- 4 FEST Camden**  
 Camden Stables Market, FEST  
 London NW1 8AH  
 T +44 (0)20 7428 4922
- 5 The Jazz Café**  
 5 Parkway  
 London NW1 7PG  
 W thejazzcafelondon.com  
 E info@thejazzcafelondon.com  
 T +44 (0)20 7485 6834
- 6 Koko**  
 1A Camden High Street  
 London NW1 7JE  
 W koko.co.uk  
 E info@koko.uk.com  
 T +44 (0)20 7388 3222
- 7 National Theatre**  
 Upper Ground  
 London SE1 9PX  
 W nationaltheatre.org.uk  
 T +44 (0)20 7452 3060
- 8 Prince Edward Theatre**  
 Prince Edward Theatre, Old Compton Street  
 London W1D 4HS  
 W princeedwardtheatre.co.uk  
 T +44 (0)844 482 5138
- 9 Regents Park Open Air Theatre**  
 The Regent's Park, Inner Circle  
 London NW1 4NU  
 W openairtheatre.com  
 E openairtheatre.com/contact  
 T +44 (0)333 400 3562
- 10 Roundhouse**  
 Chalk Farm Road, Chalk Farm  
 London NW1 8EH  
 W roundhouse.org.uk  
 E roundhouse.org.uk/email-us  
 T +44 (0)300 678 9222
- 11 Royal Festival Hall**  
 Royal Festival Hall, Southbank Centre  
 Belvedere Road  
 London SE1 8XX  
 W southbankcentre.co.uk  
 T +44 (0)20 3879 9555
- 12 Royal Opera House**  
 Bow Street  
 London WC2E 9DD  
 W roh.org.uk  
 T +44 (0)20 7240 1200
- 13 Shakespeare's Globe**  
 21 New Globe Walk  
 London SE1 9DT  
 W shakespearesglobe.com  
 T +44(0)20 7902 1400
- 14 Theatre Royal Drury Lane**  
 Theatre Royal Drury Lane, Catherine Street  
 London WC2B 5JF  
 W lwtheatres.co.uk  
 T +44(0)20 7557 7300
- 15 Junkyard Golf**  
 Stables Market, Chalk Farm Road  
 London NW1 8AB  
 W junkyardgolfclub.co.uk

## Roundhouse

Chalk Farm Road, Chalk Farm  
London NW1 8EH

W [roundhouse.org.uk](http://roundhouse.org.uk)  
E [roundhouse.org.uk/email-us](mailto:roundhouse.org.uk/email-us)  
T +44 (0)300 678 9222



A true Camden institution, Roundhouse has been a hub of creativity for 50 years. Live acts have included The Rolling Stones, David Bowie, The Ramones and Blondie. In 2006 it changed course to become a leading arts venue; showcasing drama, stand-up, poetry and – of course – music.



## Primrose Hill

Camden Stables Market, FEST, London NW1 8AH

T +44 (0)20 7428 4922

Situated in the heart of Camden Market, FEST Camden boasts 3 rooms, a beautiful roof terrace and is home to cabaret, club events, comedy and more!



## The Jazz Café

Arkwright Road  
London NW3 6DG

W [camdenartcentre.org](http://camdenartcentre.org)  
T +44 (0)20 7472 5500



One of London's most iconic music venues, where some of the biggest names in jazz and soul have performed over the last 30 years, as have local talents and rising stars. Fridays are club music nights and on Saturdays it's Soul City.

## Koko

1A Camden High Street  
London NW1 7JE

W [koko.co.uk](http://koko.co.uk)  
E [info@koko.uk.com](mailto:info@koko.uk.com)  
T +44 (0)20 7388 3222



After many changes of name – it was once the famous Camden Palace – Koko has become a leading live music venue, playing host to legends such as Madonna, Paul Weller, Ed Sheeran, Kanye West and even a secret gig from Prince.



## Camden Assembly

49 Chalk Farm Road  
Chalk Farm  
London NW1 8AN

W [camdenassembly.com](http://camdenassembly.com)  
E [info@camdenassembly.com](mailto:info@camdenassembly.com)  
T +44 (0)20 7424 0800



Formerly the Camden Barfly, Camden Assembly has been one of Camden's most important music venues for many years. Bands like Coldplay, Franz Ferdinand and many more cut their teeth here. With a capacity of 200, you're guaranteed to see energetic performances in a venue with great sound. Downstairs you will find a bar and be able to order food, but it's upstairs you want to go to see the live music.

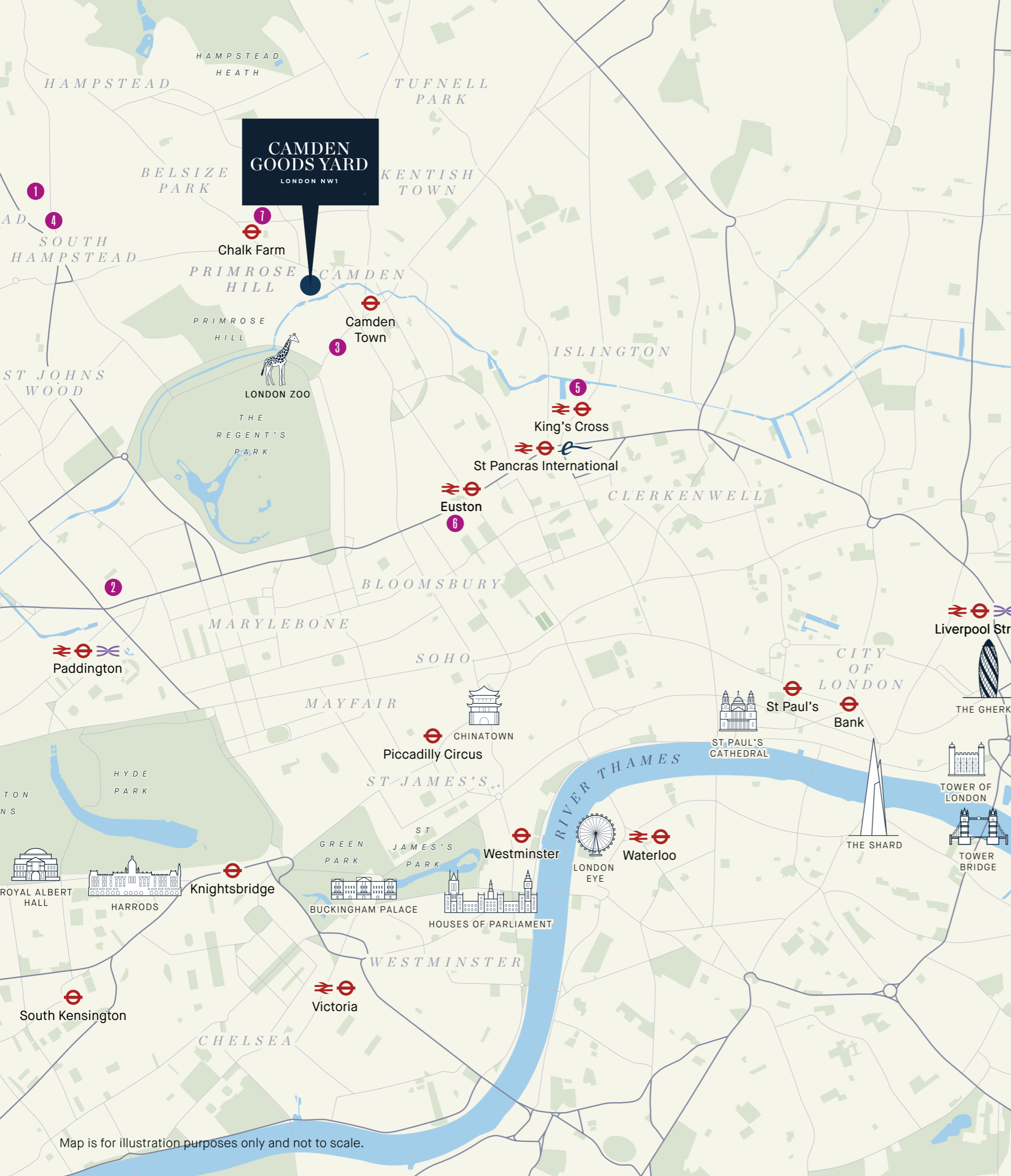




# LEISURE AND CULTURE.

## Revel in Culture

Indulge in your passion for culture by visiting the numerous museums and art galleries on your doorstep.



**1 Camden Arts Centre**

Arkwright Road  
London NW3 6DG  
W [camdenartcentre.org](http://camdenartcentre.org)  
E [info@camdenartcentre.org](mailto:info@camdenartcentre.org)  
T +44 (0)20 7472 5500

**2 Lisson Gallery**

27 Bell Street, London NW1 5BY  
W [lissongallery.com](http://lissongallery.com)  
E [contact@lissongallery.com](mailto:contact@lissongallery.com)  
T +44 (0)20 7724 2739

**3 Jewish Museum London**

129-131 Albert Street, London NW1 7NB  
W [cjewishmuseum.org.uk](http://cjewishmuseum.org.uk)  
E [admin@jewishmuseum.org.uk](mailto:admin@jewishmuseum.org.uk)  
T +44 (0)20 7284 7384

**4 Freud Museum**

20 Maresfield Gardens,  
London NW3 5SX  
W [freud.org.uk](http://freud.org.uk)  
E [info@freud.org.uk](mailto:info@freud.org.uk)  
T +44 (0)20 7435 2002

**5 London Canal Museum**

New Wharf Road,  
London N1 9RT  
W [canalmuseum.org.uk](http://canalmuseum.org.uk)  
E [info@canalmuseum.org.uk](mailto:info@canalmuseum.org.uk)  
T +44 (0)20 7713 0836

**6 Wellcome Collection Museum**

183 Euston Road,  
London NW1 2BE  
W [wellcomecollection.org](http://wellcomecollection.org)  
E [info@wellcomecollection.org](mailto:info@wellcomecollection.org)  
T +44 (0)20 7611 2222

**7 The Zabudowicz Collection**

176 Prince of Wales Road,  
London NW5 3PT  
W [zabudowiczcollection.com](http://zabudowiczcollection.com)  
E [info@zabudowiczcollection.com](mailto:info@zabudowiczcollection.com)  
T +44 (0)20 7428 8940

Map is for illustration purposes only and not to scale.





## Camden Arts Centre



Arkwright Road  
London NW3 6DG

W [wellcomecollection.org](http://wellcomecollection.org)  
E [info@wellcomecollection.org](mailto:info@wellcomecollection.org)  
T +44 (0)20 7611 2222

Camden Arts Centre is the place to see, to make, to learn and to talk about contemporary art. It combines historic architecture with open, modern spaces, a café, bookshop and secluded garden with free entry for all.

## Wellcome Collection Museum



183 Euston Road,  
London NW1 2BE

W [wellcomecollection.org](http://wellcomecollection.org)  
E [info@wellcomecollection.org](mailto:info@wellcomecollection.org)  
T +44 (0)20 7611 2222

A free museum and library exploring health and human experience. Through exhibitions, collections, live programming, digital, broadcast and publishing; Wellcome Collection Museum create opportunities for people to think deeply about the connections between science, medicine, life and art.



## Lisson Gallery



27 Bell Street,  
London NW1 5BY

W [lissongallery.com](http://lissongallery.com)  
E [contact@lissongallery.com](mailto:contact@lissongallery.com)  
T +44 (0)20 7724 2739

One of the most influential and longest-running international contemporary art galleries in the world. The Lisson Gallery supports and promotes the work of more than 60 international artists across two spaces in London, three in New York and one in Shanghai, as well as forthcoming galleries in Beijing and Los Angeles.



## London Canal Museum



New Wharf Road,  
London N1 9RT

W [canalmuseum.org.uk](http://canalmuseum.org.uk)  
E [info@canalmuseum.org.uk](mailto:info@canalmuseum.org.uk)  
T +44 (0)20 7713 0836

See inside a narrowboat cabin, learn about the history of London's canals, about the cargoes carried, the people who lived and worked on the waterways and the horses that pulled their boats. This unique waterways museum, the only one in London, is housed in a former ice warehouse built in about 1863.



## The Zabludowicz Collection



176 Prince of Wales Road,  
London NW5 3PT

W [zabludowiczcollection.com](http://zabludowiczcollection.com)  
E [info@zabludowiczcollection.com](mailto:info@zabludowiczcollection.com)  
T +44 (0)20 7428 8940

A private art collection which is open to the public. It was founded on a commitment to producing a vibrant and sustainable ecology for art and achieves this through a growing archive of contemporary art by an international variety of artists from the earliest stages of their careers.



## The Freud Museum



20 Maresfield Gardens,  
London NW3 5SX

W [freud.org.uk](http://freud.org.uk)  
E [info@freud.org.uk](mailto:info@freud.org.uk)  
T +44 (0)20 7435 2002

A museum at what was the home of Sigmund Freud (the founder of psychoanalysis) and his family when they escaped Austria following the Nazi annexation in 1938. The centrepiece of the museum is Freud's study and therapy couch which is preserved just as it was during his lifetime.

## The Jewish Museum



129-131 Albert Street,  
London NW1 7NB

W [cjewishmuseum.org.uk](http://cjewishmuseum.org.uk)  
E [admin@jewishmuseum.org.uk](mailto:admin@jewishmuseum.org.uk)  
T +44 (0)20 7284 7384

The Jewish Museum has existed in Camden for over 90 years and aims to tell the story of the history and heritage of Jewish people in Britain through universal themes of migration, family, faith and culture. This is a must see for any visitor to Camden Town.





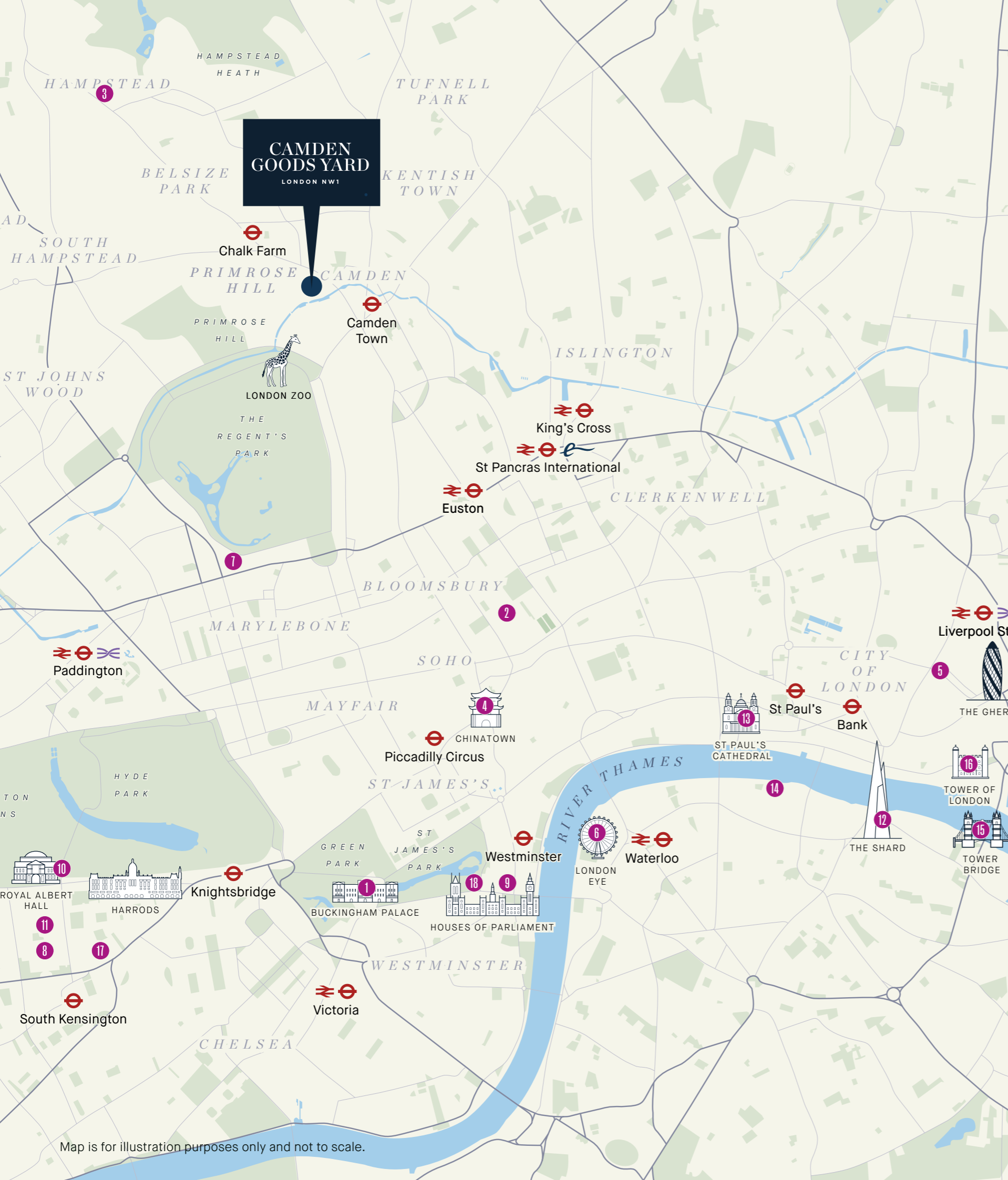
# ATTRACTIONS.

## London's Finest

---

It's hard to summarise London in just a few attractions, but these are some of the ones that continue to be admired by visitors from all over the world.

# ATTRACTIONS



Map is for illustration purposes only and not to scale.

- 1 Barbican**  
Silk St, Barbican,  
London EC2Y 8DS  
W [barbican.org.uk](http://barbican.org.uk)  
T +44 (0)20 7638 4141
- 2 British Library**  
96 Euston Rd, London NW1 2DB  
W [bl.uk](http://bl.uk)  
T +44 (0)330 333 1144
- 2 British Museum**  
Great Russell Street  
London WC1B 3DG  
W [britishmuseum.org](http://britishmuseum.org)  
T +44 (0)20 7323 8000
- 1 Buckingham Palace**  
Westminster  
London SW1A 1AA  
W [buckinghampalace.co.uk](http://buckinghampalace.co.uk)
- 3 Camden Arts Centre**  
Arkwright Road  
London NW3 6DG  
W [camdenartcentre.org](http://camdenartcentre.org)  
E [info@camdenartcentre.org](mailto:info@camdenartcentre.org)  
T +44 (0)20 7472 5500
- 4 Chinatown**  
Gerrard Street  
London W1D 5PT  
W [chinatown.co.uk](http://chinatown.co.uk)
- 5 'The Gherkin'**  
30 St Mary Axe  
London EC3A 8BF  
W [30stmaryaxe.com](http://30stmaryaxe.com)  
T +44(0)20 7071 5029
- 6 London Eye**  
Riverside Building, County Hall  
London SE1 7PB  
W [londoneye.com](http://londoneye.com)
- 2 London Zoo**  
Regent's Park,  
London NW1 4RY  
W [zsl.org/zsl-london-zoo](http://zsl.org/zsl-london-zoo)  
T +44 (0)344 225 1826
- 7 Madame Tussauds**  
Marylebone Road  
London NW1 5LR  
W [madametussauds.com/london](http://madametussauds.com/london)
- 8 Natural History Museum**  
Cromwell Road  
London SW7 5BD  
W [nhm.ac.uk](http://nhm.ac.uk)  
T +44 (0)20 7942 5000
- 9 Palace of Westminster**  
London SW1A 0AA  
W [parliament.uk/visiting](http://parliament.uk/visiting)  
T +44 (0)20 8332 5655
- 10 Royal Albert Hall**  
Kensington Gore, South Kensington  
London SW7 2AP  
W [royalalberthall.com](http://royalalberthall.com)  
T +44(0)20 7589 8212
- 11 Science Museum**  
Exhibition Road, South Kensington  
London SW7 2DD  
W [sciencemuseum.org.uk](http://sciencemuseum.org.uk)  
T +44 (0)330 058 0058
- 12 The Shard**  
32 London Bridge Street  
London SE1 9SG  
W [theviewfromtheshard.com](http://theviewfromtheshard.com)  
T +44 (0)344 499 7222 or  
+44 (0)844 499 7111
- 13 St Paul's Cathedral**  
St Paul's Churchyard  
London EC4M 8AD  
W [stpauls.co.uk](http://stpauls.co.uk)
- 14 Tate Modern**  
Bankside  
London SE1 9TG  
W [tate.org.uk](http://tate.org.uk)  
T +44 (0)20 7887 8888
- 15 Tower Bridge**  
Tower Bridge Rd  
London SE1 2UP  
W [towerbridge.org.uk](http://towerbridge.org.uk)  
T +44 (0)20 7403 3761
- 16 Tower of London**  
London  
EC3N 4AB  
W [hrp.org.uk](http://hrp.org.uk)
- 17 Victoria and Albert Museum**  
Cromwell Road  
London SW7 2RL  
W [vam.ac.uk](http://vam.ac.uk)  
T +44 (0)20 7942 2000
- 18 Westminster Abbey**  
20 Deans Yard  
London SW1P 3PA  
W [westminster-abbey.org](http://westminster-abbey.org)  
T +44(0)20 7222 5152

# ATTRACTIONS.

## Madam Tussauds



Marylebone Road,  
London NW1 5LR

W [madametussauds.com/london](http://madametussauds.com/london)  
T +44 (0)20 7323 8000

Madame Tussauds combines glitz and glamour with incredible heritage. There are over 150 wax figures on display at any one time. Visit to get up close and personal to some of your favourite icons and famous faces.



## British Museum



Great Russell Street,  
London WC1B 3DG

W [britishmuseum.org](http://britishmuseum.org)  
T +44 (0)20 7323 8000

Without doubt, one of the world's greatest museums. Its star exhibits include the Rosetta Stone, Parthenon Marble Sculptures, the Portland Vase and the impressive collection of Egyptian mummies. The covered-in courtyard around the Reading Room is a beautiful, inspiring space.



## Barbican



Silk Street, Barbican,  
London EC2Y 8DS

W [barbican.org.uk](http://barbican.org.uk)  
T +44 (0)20 7638 4141

This unique venue presents a diverse range of art, music, theatre, dance, film and creative learning events. The Barbican provides a vibrant London home for established international artists and also help commissioners to launch young performers. As well as performances, the Barbican hosts workshops, talks and debates.



## The British Library



96 Euston Road,  
London NW1 2DB

W [bl.uk](http://bl.uk)  
T +44 (0)330 333 1144

The British Library is the national library of the United Kingdom and is one of the largest libraries in the world. It is estimated to contain between 170 and 200 million items from spanning across several countries.

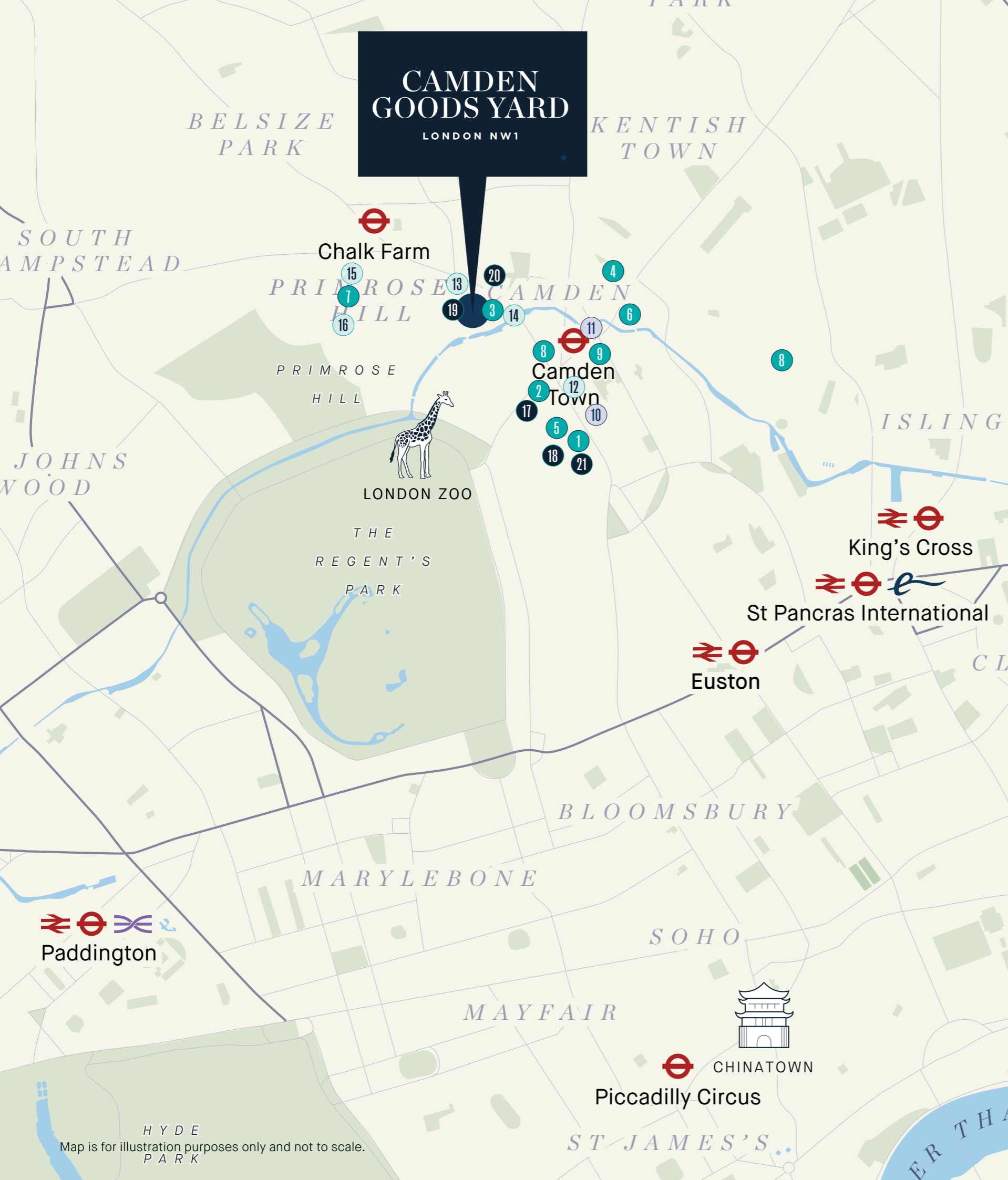
FRESH &  
ORGANIC  
FRUIT & VEGETABLES



# EVERYDAY ESSENTIALS.

## Just around the Corner

Camden Town is a busy cluster of convenient shops, services, supermarkets – many keeping late hours – making it very easy to find everything you need, any day of the week



**CAMDEN  
GOODS YARD**  
LONDON NW1

**Health**

- 1 AcuMedic Clinic**  
103-105 Camden High Street  
London NW1 7JN  
W [acumed.com](http://acumed.com)  
T +44 (0)20 738 86704
- 2 Boots**  
173-175 Camden High Street  
London NW1 7JY  
+44 (0)20 7485 5216  
W [boots.com](http://boots.com)
- 3 The Regency Club at Camden**  
Chalk Farm Road  
London NW1 8AA
- 4 Ivy House Dental Practice**  
51 Kentish Town Road  
London NW1 8NX  
W [ivyhousedentalcamden.co.uk](http://ivyhousedentalcamden.co.uk)  
T +44 (0)20 7284 1110
- 5 JP Pharmacy**  
139 Camden High Street  
London NW1 7JR  
W [jppharmacy.org.uk](http://jppharmacy.org.uk)  
T +44 (0)20 7482 2875
- 6 NW1 Dental Care**  
92 Camden Road  
London NW1 9EA  
W [dentalhub.online](http://dentalhub.online)  
T +44 (0)20 7485 4626
- 7 Primrose Hill Surgery**  
99 Regent's Park Road, Primrose Hill  
London NW1 8UR  
W [primrosehillsurgery.co.uk](http://primrosehillsurgery.co.uk)  
T +44 (0)20 7722 0038
- 8 PureGym London Camden**  
193-199 Camden High Street  
W [puregym.com/gyms/london-camden](http://puregym.com/gyms/london-camden)
- 9 Women and Health**  
4 Carol Street  
London NW1 0HU  
W [womenandhealth.org.uk](http://womenandhealth.org.uk)
- 10 Camden High Street Post Office**  
112-114 Camden High Street  
London NW1 ORR  
W [postoffice.co.uk/branch-finder/2080052/camden](http://postoffice.co.uk/branch-finder/2080052/camden)  
T +44 (0)345 722 3344
- 11 Express Dry Cleaners**  
46 Camden Road, Camden Town  
London NW1 9DR  
T +44 (0)20 7267 1528

**Cafés**

- 12 Pret A Manger**  
157 Camden High Street  
London NW1 7JY  
+44 (0)20 7932 5407  
W [locations.pret.co.uk](http://locations.pret.co.uk)
- 13 Camden Coffee Co**  
Camden Lock Place  
London NW1 8AH  
W [camdencoffee.com](http://camdencoffee.com)  
T +44 (0)7511 418 630
- 14 Lili's Heathy Bar**  
74 Lower Walkway, Camden Lock Place  
London NW1 8AF  
W [lilischocolates.com](http://lilischocolates.com)  
T +44 (0)7463 552 116
- 15 The Little One Coffee Shop & Roastery**  
115a Regent's Park Road  
London NW1 8UR  
W [tlocoffee.com](http://tlocoffee.com)
- 16 Sam's Cafe**  
40 Chalcot Road  
London NW1 8XL  
W [samscafeprimrosehill.com](http://samscafeprimrosehill.com)  
T +44 (0)207 916 3736

**Supermarkets**

- 17 Longdan Oriental Supermarket**  
23 Parkway  
London NW1 7PG  
W [longdan.co.uk](http://longdan.co.uk)  
T +44 (0)20 7813 3111
- 18 M&S Simply Food**  
143 Camden High Street  
London NW1 7JX  
W [marksandspencer.com](http://marksandspencer.com)  
T +44 (0)20 7267 6055
- 19 Morrisons**  
Chalk Farm Road, Chalk Farm  
London NW1 8EH  
W [my.morrisons.com](http://my.morrisons.com)  
T +44 (0)20 742 80405
- 20 Sainsburys Local**  
The Chalk House, 76-77 Chalk Farm Road  
Chalk Farm, London NW1 8AN  
W [stores.sainsburys.co.uk](http://stores.sainsburys.co.uk)  
T +44 (0)207 267 2378
- 21 Tesco Express**  
159-165 Camden High Street  
London NW1 7JY  
W [tesco.com](http://tesco.com)  
T +44 (0)345 610 6774

**Services**

- 10 Camden High Street Post Office**  
112-114 Camden High Street  
London NW1 ORR  
W [postoffice.co.uk/branch-finder/2080052/camden](http://postoffice.co.uk/branch-finder/2080052/camden)  
T +44 (0)345 722 3344
- 11 Express Dry Cleaners**  
46 Camden Road, Camden Town  
London NW1 9DR  
T +44 (0)20 7267 1528

Map is for illustration purposes only and not to scale.

# CONTACT.

## Immersion Suite and Showhome

Our Marketing Suite will be located at  
*London Dock* until 2024. Come and immerse yourself  
in our experience centre.

By appointment only, at the  
London Dock Marketing Suite.9 Arrival Square,  
Vaughan Way, London E1W 2AA.

[sales@camdengoodsyard.co.uk](mailto:sales@camdengoodsyard.co.uk)  
+44 (0)203 040 7000



Map is for illustration purposes only and not to scale.



The information in this document is indicative and is intended to act as a guide only as to the finished product. Accordingly, due to St George's policy of continuous improvement, the finished product may vary from the information provided. These particulars should not be relied upon as statements of fact or representations and applicants must satisfy themselves by inspection or otherwise as to their correctness. This information does not constitute a contract or warranty. The dimensions given on plans are subject to minor variations and are not intended to be used for carpet sizes, appliance sizes or items of furniture. Primrose House, Camden Goods Yard is a marketing name and will not necessarily form part of the approved postal address. Planning Permission number 2020/3116/P. Granted by Camden Council. Purchasers are acquiring an apartment with a new 999-year leasehold from 2023. Like any investment, purchasing uncompleted properties situated outside Hong Kong is complicated and contains risk. You should review all relevant information and documents carefully before making a purchase decision. If in doubt, please seek independent professional advice before making a purchase decision. H054/05CA/0623.

CAMDENGOODSYARD.CO.UK