



ABBEY BARN PARK

HIGH WYCOMBE | BUCKINGHAMSHIRE

THE POPLAR

4 BEDROOM HOUSE

PLOTS 528*, 529, 535*, 540*,
541 & 542*

Berkeley
Designed for life



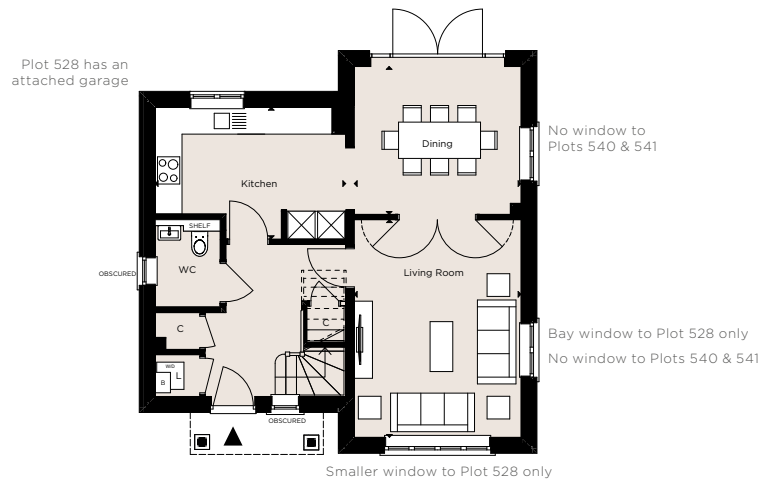
Computer generated image of Plot 535 is indicative only.

THE POPLAR

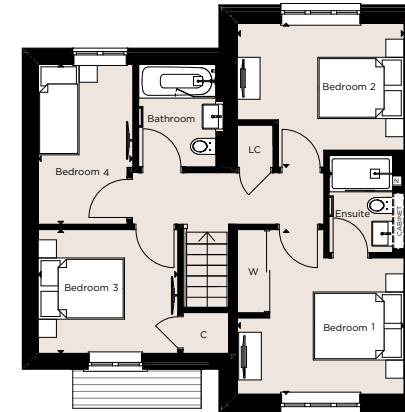
4 BEDROOM HOUSE

PLOTS 528*, 529, 535*, 540*, 541 & 542*

(116 SQ M 1,256 SQ FT)



GROUND FLOOR



FIRST FLOOR

PLOTS 528, 529, 535, 540, 541 & 542

Kitchen	4.20m (max) x 2.89m (max)	13' 9" (max) x 9' 5" (max)
Dining Room	3.67m x 3.26m	12' 0" x 10' 8"
Living Room	4.79m x 3.67m	15' 8" x 12' 0"

*Handed to floorplan shown

PLOTS 528, 529, 535, 540, 541 & 542

Bedroom 1	3.67m (max) x 3.63m (max)	12' 0" (max) x 11' 10" (max)
Bedroom 2	3.67m (max) x 3.17m (max)	12' 0" (max) x 10' 4" (max)
Bedroom 3	3.07m x 2.73m	10' 0" x 8' 11"
Bedroom 4	3.53m (max) x 2.08m (max)	11' 6" (max) x 6' 9" (max)

*Handed to floorplan shown

Floorplan shown above is Plot 529.

Windows may vary between plots. Please speak to a sales consultant.

◀▶ Measurement Points C Cupboard L Laundry Cupboard AC Airing Cupboard W Wardrobe B Boiler N Niche WM Space and Plumbing for Washing Machine WD Space and Plumbing for Washer/Dryer TD Space and Plumbing for Tumble Dryer
Floorplans shown for Berkeley Homes are for approximate measurements only. Exact layouts and sizes may vary. All measurements may vary within a tolerance of 5%. The dimensions are not intended to be used for carpet sizes, appliance sizes or items of furniture.