



ABBEY BARN PARK

HIGH WYCOMBE | BUCKINGHAMSHIRE

THE MAPLE

5 BEDROOM HOUSE

PLOT 548



Berkeley
Designed for life

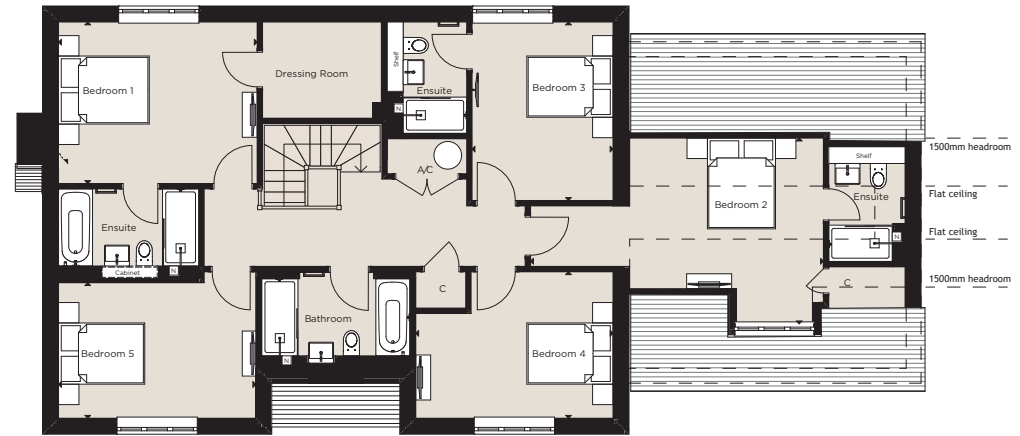
Computer generated image of Plot 548 is indicative only.

THE MAPLE

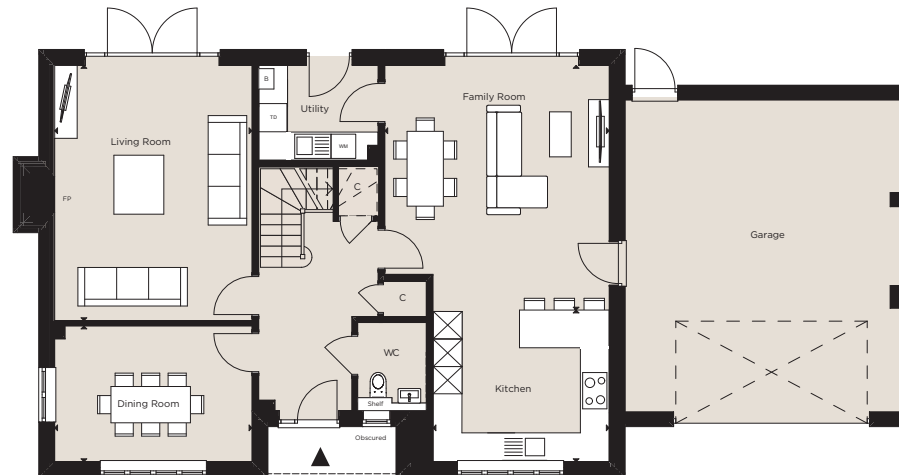
5 BEDROOM HOUSE

PLOT 548

(229 SQ M 2,465 SQ FT)



FIRST FLOOR



GROUND FLOOR

PLOT 548

Kitchen	3.88m x 3.34m	12' 8" x 10' 11"
Family Room	5.39m (max) x 4.94m (max)	17' 8" (max) x 16' 2" (max)
Dining Room	4.35m x 2.99m	14' 3" x 9' 9"
Living Room	5.62m x 4.35m	18' 5" x 14' 3"
Bedroom 1	4.38m x 3.56m	14' 4" x 11' 8"
Bedroom 2	6.45m (max) x 4.09m (max)	21' 2" (max) x 13' 5" (max)
Bedroom 3	3.93m x 3.11m	12' 10" x 10' 2"
Bedroom 4	4.35m (max) x 3.23m (max)	14' 3" (max) x 10' 7" (max)
Bedroom 5	4.35m x 2.99m	14' 3" x 9' 9"

Floorplan shown above is Plot 548.

Windows may vary between plots. Please speak to a sales consultant.

◀ Measurement Points C Cupboard L Laundry Cupboard AC Airing Cupboard W Wardrobe B Boiler N Niche WM Space and Plumbing for Washing Machine WD Space and Plumbing for Washer/Dryer TD Space and Plumbing for Tumble Dryer
Floorplans shown for Berkeley Homes are for approximate measurements only. Exact layouts and sizes may vary. All measurements may vary within a tolerance of 5%. The dimensions are not intended to be used for carpet sizes, appliance sizes or items of furniture.