



WILLOWBROOK
HOUSE



WOODBERRY DOWN

Berkeley
Designed for life

Notes

Customer ID:

*Surrounded by an exhilarating natural
waterside environment and just 20 minutes
from the City in Zone 2, Woodberry Down is the
perfect place to appreciate an unrivalled living
experience in London. A thriving community
with an abundance of amenities set alongside
a tranquil nature reserve and sailing lake.*





WILLOWBROOK
HOUSE

A Waterside Community

Emanating from the acres of open water and parkland of Woodberry Down, Finsbury Park's award-winning waterside community.

Willowbrook House is the latest West Reservoir Residence to join this landmark regeneration neighbourhood in London's Zone 2. Offering spectacular skyline views over the city, it is just 4 minutes' walk from Manor House Tube station, and from there only 8 minutes to King's Cross.

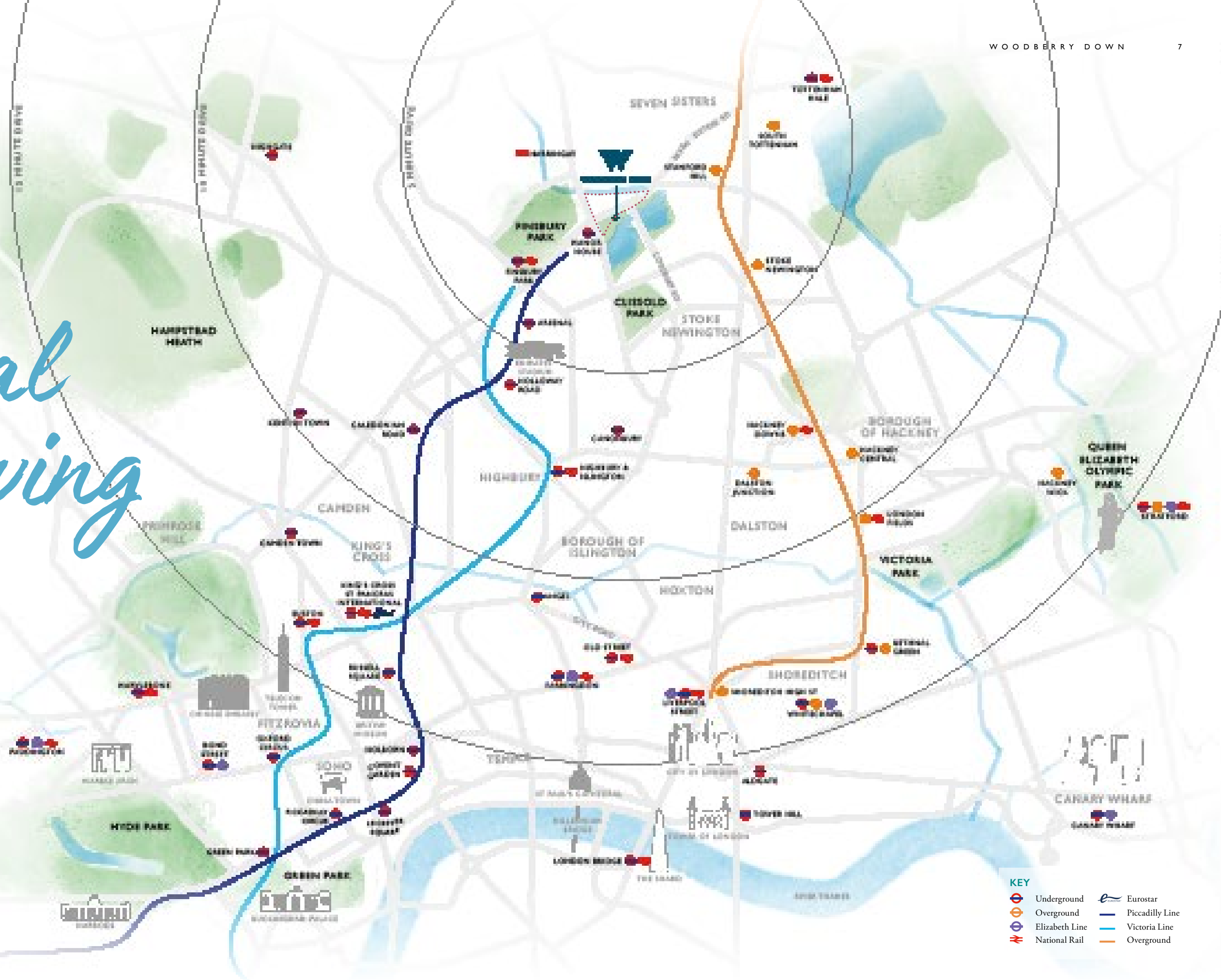
This thriving community overlooking the sailing lake is next to the 112 green acres of Finsbury Park and just a stone's throw away from another of the city's gems, the eclectic picturesque neighbourhood of Stoke Newington.

Here you are both living alongside a glorious Nature Reserve and close to the world-class culture and amenities that London has to offer. Life is great at Woodberry Down.



Natural city living

One of London's hidden gems, Woodberry Down lies 8 minutes by Tube to King's Cross and only 20 minutes to The City. Just to the west is Finsbury Park, while to the south lies Stoke Newington, with lots of independent shops and cafés, pubs, bars, arts spaces and picturesque parkland to explore.





Woodberry Living

Food & Drink

01. Zer Café and Juice Bar
02. Sublime Pizzeria & Bar
03. The Coal House Café
04. The Happening Bagel Bakery
05. Salvation in Noodles
06. The Blighty Café
07. Salt the Radish
08. Yard Sale Pizza
09. The Spence Bakery
10. The Good Egg
11. Escocesa

Pubs & Bars

12. The Naturalist
13. The Finsbury
14. The Brownwood
15. The Twelve Pins
16. The Rose & Crown
17. Ryan's N16
18. The Red Lion
19. The Auld Shillelagh
20. The Clarence Tavern

Great Outdoors

21. Spring Park
22. New River Park
23. Riverside Gardens
24. West Reservoir Centre
25. The Castle Climbing Centre
26. Finsbury Park
27. Woodberry Wetlands
28. Clissold Park
29. Abney Park

Community

30. Manor House Development Trust
31. The Redmond Community Centre
32. The Post Office
33. Co-op & Travelodge
34. The Edge Youth Hub
35. N4 Library

Shopping

36. Woodberry Blooms
37. Goldstar
38. Sainsbury's Local
39. Simply Organique
40. Whole Foods

Arts & Culture

41. Furtherfield Gallery
42. Rowans Tenpin Bowl
43. New River Studios

Clubs & Sports

44. The Gym
45. North London Sailing Association
46. Evoke
47. Bike Mech

Education

48. Skinners' Academy
49. Woodberry Down School
50. Stamford Hill Primary School
51. Sir Thomas Abney School
52. Grazebrook School
53. Stoke Newington School

KEY

- Underground
- National Rail
- Woodberry Down Site boundary

History of Woodberry Down



1832

Two reservoirs are dug – the East and West reservoirs of today – to purify the New River.



1869

Finsbury Park is created, one of the first of the great London parks laid out in the Victorian era.



1932

Manor House Underground station is built, with nine entrances and two tram stations. The transport links pave the way for a 1936 London County Council report that says the area is suitable 'for housing and use in the relief of over-crowding.' This is the origin of Woodberry Down.



1948

The first of the new tenants move into the vast estate being built. Much of the area continues to be redeveloped until the 1970s.



2009

Berkeley Homes start building at Woodberry Down and the first home is sold.



2015

The 1,000th home is built.



2016

The Woodberry Wetlands are opened to the public for the first time in 200 years.



2018

Winners of:

- RICS Grand Final Project of the Year Awards
- RICS Grand Final Best Regeneration
- Planning Award for Community Led Placemaking
- London Evening Standard Award Best Large Development



2035

Final phase at Woodberry Down expected to complete.

Nature is our heritage

The Woodberry Wetlands is a popular urban oasis, where wonderful wildlife thrives alongside the community. Opened in 2016, the 17 acres of nature reserve and working reservoir is now a thriving habitat for wildflowers, kingfishers, herons and even rare migratory birds. It is one of The Wildlife Trust's top visitor attractions, with over 120,000 visitors each year.



Urban. oasis



Computer-enhanced image is indicative only and subject to planning.

Willowbrook House overlooks the calming waters of the West Reservoir. Here, enthusiasts of all ages can be seen enjoying an invigorating swim in the open waters, or learning how to sail, canoe and kayak.

A sanctuary of style and sustainability, Willowbrook House overlooks the calming waters of the West Reservoir. Here, enthusiasts of all ages can be seen enjoying an invigorating swim in the open waters, or learning how to sail, canoe and kayak. The popular sailing club also has a lovely waterfront café open to the public.

Neighbouring popular places to meet and eat include: the Coal House Café, reached by the bridge over the Nature Reserve and offering wonderful views from the rooftop; the light-filled and friendly Zer Café and Juice Bar, serving great food and fresh juices; and the local organic deli and café, Simply Organique. There are also supermarkets, gyms, a post office and a dry cleaners.





“

We collected the keys at 7.30am and I vividly remember walking into our new home and watching the sunrise over the two stunning reservoirs below. I knew we had made the right decision and we would be very happy.

”

Hillary Britton
Berkeley Homes Purchaser
at Woodberry Down



Woodberry Down is home to two of London's largest, restful reservoirs and open spaces with glorious views over the London skyline.

Originally constructed in 1832, the Wetlands were first opened to the public in 2016 by Thames Water, The London Wildlife Trust.

Their celebrated conservation efforts mean it now supports many species, from wintering populations of pochard duck, tufted duck, gadwall ducks and peregrine falcons to reed warblers and bunting migrating from Africa for Spring and Summer.

But it's not just great for birds. The West Reservoir is now a sailing lake, while the vast green parks provide serene spaces for runners and walkers all year round.



42 acres of
open water

Community



WOODBERRY WETLANDS

At the heart of Woodberry Down is a flourishing, family-friendly community who eat, drink, learn, garden and do outdoor yoga together.

Rock climbing is also a local favourite, with the most popular climbing centre in the UK, the Castle Climbing Centre situated just south of the West Reservoir.

Another favourite hub for residents and locals alike is the modern Redmond Community Centre. Overlooking the New River, it offers a vibrant diary of activities, including a creative arts programme, cookery classes and free annual outdoor film screenings.

Open all day for food and catch-ups with friends is the nearby Naturalist, a contemporary pub serving a strong seasonal menu alongside local craft beers and irresistible cocktails.

All this exists within close proximity to the Woodberry sailing lake. A place where rowers and sailors of all abilities are welcome, and offering certified sailing and kayaking courses for both adults and children.



NEW RIVER STEPS



SAILING LAKE



COAL HOUSE CAFÉ

More relaxed than Shoreditch, Stoke Newington is loved for its very creative and down-to-earth vibe.

To see the best of Stoke Newington, take a 15-minute stroll down to Church Street, abuzz with unique independent shops, bars, exciting eateries and a farmers' market every Sunday.

Stretching alongside Church Street is Clissold Park, a charming traditional open space with a great café in an 18th-century mansion house, an adventure playground, tennis courts, an animal sanctuary and an aviary.



OLIVE LOVES ALFIE, STOKE NEWINGTON CHURCH ST



CLISSOLD PARK

City life village living



CLISSOLD PARK



STOKE NEWINGTON CHURCH ST

Arts & culture



REGENT'S CANAL TOWPATH, SHOREDITCH



MARKET, SHOREDITCH



STOKE NEWINGTON CHURCH STREET



RIBBONS & TAYLOR, STOKE NEWINGTON CHURCH STREET



ALEXANDRA PALACE

Hackney and East London are at the heart of London's thriving contemporary art hub.

Banksy, the world's best-known graffiti artist, did his early London work around Shoreditch, in the south of Hackney. Walk along Stoke Newington Church Street to find his portrait of the Royal Family, one of only a few original Banksy's left in the capital.

Nearby in the Hang-Up Art Gallery are more Banksy creations – signed and unsigned prints by him, alongside Shrigley and Takashi

Murakami originals. Even more popular is the famous Hackney Empire, a restored theatre from 1901 with a decadent interior and an eclectic programme.

Wander further north and stumble across the iconic Alexandra Palace, or 'Ally Pally' as it's so lovingly known as. A historic venue, first opened in 1863, it hosted the first ever television broadcast, and now showcases some of the most exciting events London has to offer.

World-class education

London is revered worldwide for its exceptional choice of excellent educational establishments for all ages. Woodberry Down is surrounded by several outstanding primary schools, as well as noteworthy secondary schools. The London School of Economics, University College London, and the University of the Arts are all within half an hour on the Tube.

“
Sir Thomas Abney, a highly successful, happy and welcoming school, bordering the Woodberry Wetlands nature reserve. We offer children and their families the opportunity to be part of a vibrant and creative community.
”

Geraldine Fitzmaurice, St Thomas Abney

JOURNEY TIME IN MINUTES FROM MANOR HOUSE STATION

LONDON UNIVERSITIES	UNIVERSITIES	10 – 15	16 – 20	21 – 25	26 – 30
	University of Westminster – Westminster	●			
	UAL University – King’s Cross	●			
	School of Oriental & African Studies – Bloomsbury	●			
	Central St. Martin’s University – King’s Cross	●			
	London School of Economics – Holborn	●			
	UCL University – Euston	●			
	King’s College University – Covent Garden			●	
	City University London – Angel			●	
	Royal Academy of Music – Regent’s Park			●	
	Imperial College London – South Kensington				●
	Queen Mary University – Holborn				●
	Birkbeck University – Bloomsbury	●			
	Royal Veterinary College, University of London – Camden		●		
	London South Bank University – Elephant and Castle				●
	London Metropolitan University – Holloway	●			
	London College of Fashion – Holloway			●	

● Bus and Tube ● Bus only ● Tube only

All times are based on travelling at 7:30am on a weekday from Manor House underground station. Source: tfl.gov.uk. All times are approximate.



UNIVERSITY OF THE ARTS LONDON



UNIVERSITY COLLEGE LONDON



JOURNEY TIME IN MINUTES FROM MANOR HOUSE STATION

PRIMARY SCHOOLS	SCHOOLS	5 – 10	11 – 15	16 – 20	21 – 25	26 – 30	31 – 35	36 – 40	41 – 45
	Woodberry Down – Ofsted Outstanding	●							
	Sir Thomas Abney – Ofsted Good		●						
	Grazebrook – Ofsted Outstanding		●						
	Holmleigh – Ofsted Outstanding			●					
	The Olive School, Hackney – Ofsted Outstanding				●				
	Jubilee Primary – Ofsted Outstanding			●					
	Skinner’s Academy – Ofsted Good	●							
	Stoke Newington School – Ofsted Good		●						
	Gladesmore Community – Ofsted Outstanding			●					
SECONDARY SCHOOLS	City of London School for Boys – Private school					●			
	Highgate School – Private school						●		
	Westminster School – Private school							●	
	St Paul’s Girls’ School – Private school								●

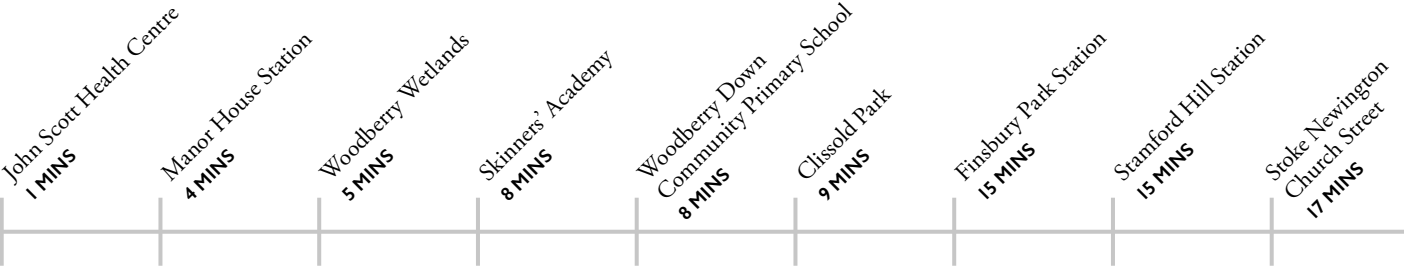
● Walking Time ● Bus Time ● Tube Time

All times are based on travelling at 7:30am on a weekday from Manor House underground station. Source: tfl.gov.uk. All times are approximate.

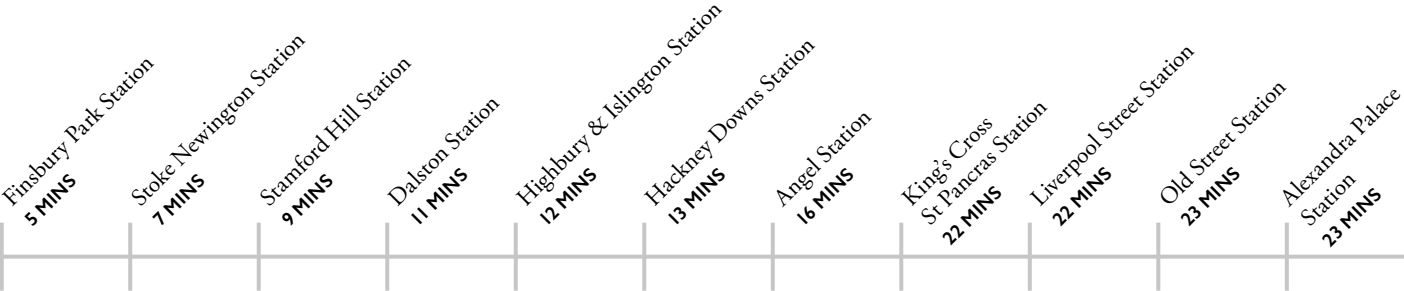
Ofsted ratings from <https://reports.ofsted.gov.uk> April 2019

Well Connected

Exploring London and beyond is easy. Manor House Underground station is only a four-minute walk away, where the Piccadilly line takes you directly to King’s Cross in eight minutes as well as the West End and the City in 20 minutes.



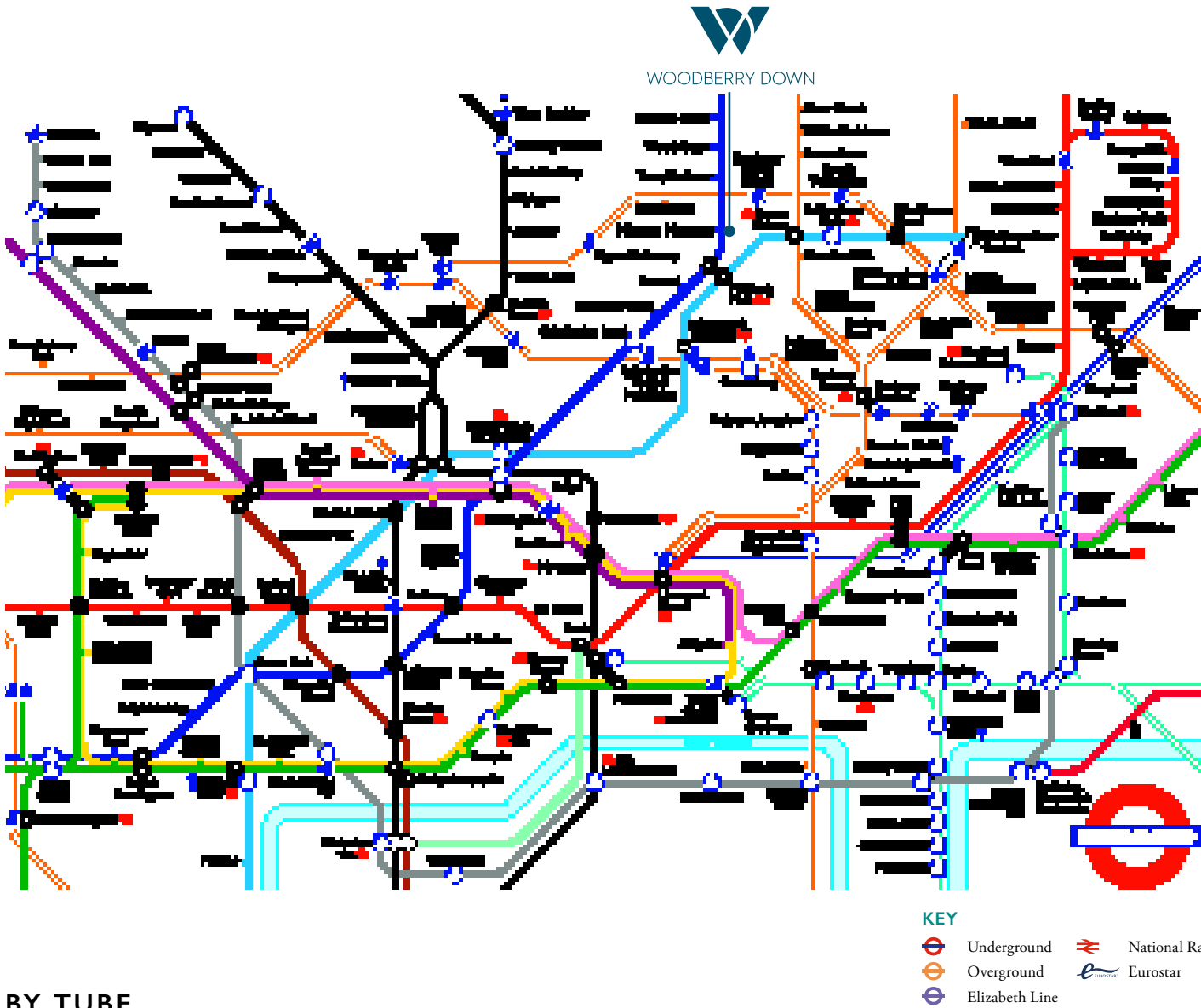
BY FOOT



BY BIKE

Journey time from Willowbrook House

Source: tfl.gov.uk. All times are approximate.



BY TUBE
FROM MANOR HOUSE STATION, ZONE 2

Finsbury Park 2 MINS	Holborn 14 MINS	Farringdon 18 MINS	London Bridge 23 MINS
Highbury & Islington 5 MINS	Angel 15 MINS	Bond Street 18 MINS	Liverpool Street 24 MINS
King's Cross St Pancras 8 MINS	Green Park 15 MINS	Hackney Central 18 MINS	London Fields 25 MINS
Seven Sisters 8 MINS	Victoria 16 MINS	Hackney Downs 22 MINS	Southwark 27 MINS
Old Street 13 MINS	Dalston Junction 17 MINS	Bank 22 MINS	Canary Wharf 35 MINS
Oxford Circus 13 MINS	Leicester Square 17 MINS	Knightsbridge 23 MINS	Heathrow Terminals 2 & 3 48 MINS

Source: tfl.gov.uk. All times are approximate.



Residents' facilities

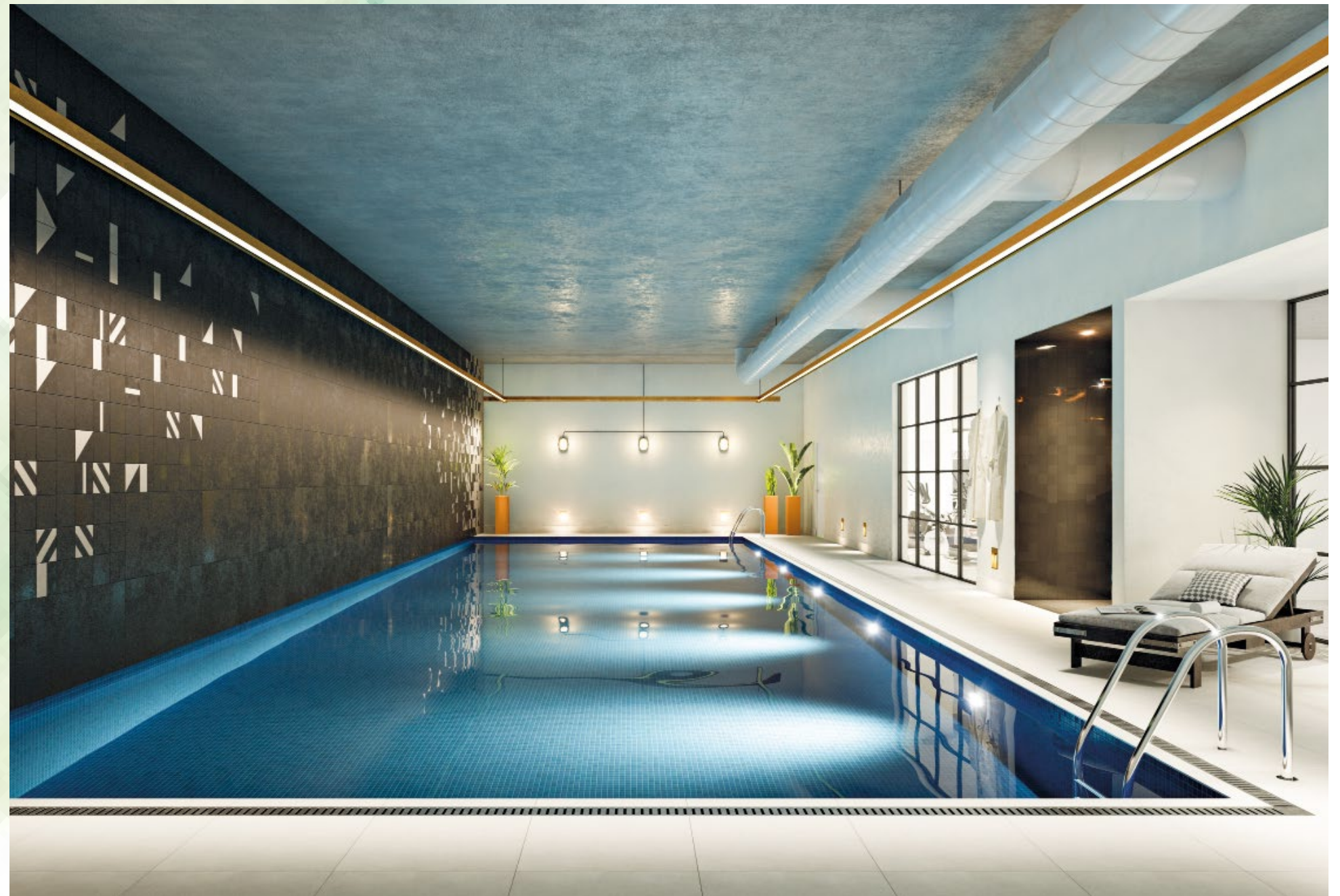
Willowbrook House is the perfect setting to slow down and appreciate the moment. Next door in Hartingtons, there is The Residents' Lounge which is the perfect space to meet your neighbours and guests, or even take a moment to enjoy the interior design. A dedicated concierge is on hand to manage everyday details.





Fitness & wellbeing

Next door in Hartingtons, Willowbrook House residents can enjoy a number of lifestyle benefits, from the calming tranquillity of the pool to a fitness suite.





Woodberry living

“

My flat is like a retreat away from the busy pace of London. Getting to work in the City is a dream too; I either cycle, which takes just twenty minutes, or get the tube from Manor House into Moorgate in twenty minutes.

Homeowner
Living at Woodberry Down

”



Heron





Falcon



Hawk



A sanctuary of style



Photograph of a bedroom in Willowbrook House.



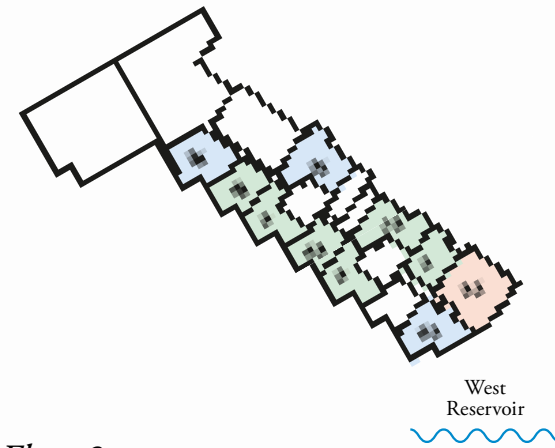


*Calming views across
the West Reservoir*

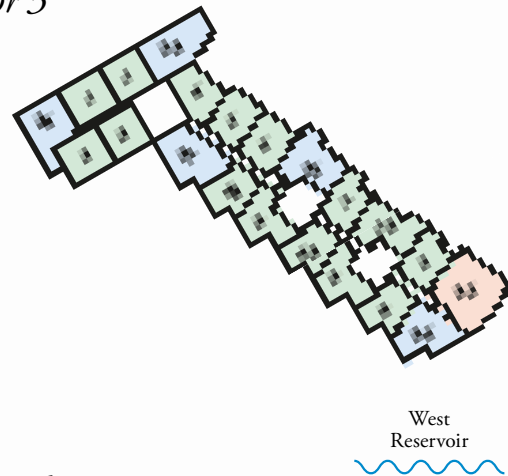


Apartment types & floorplates

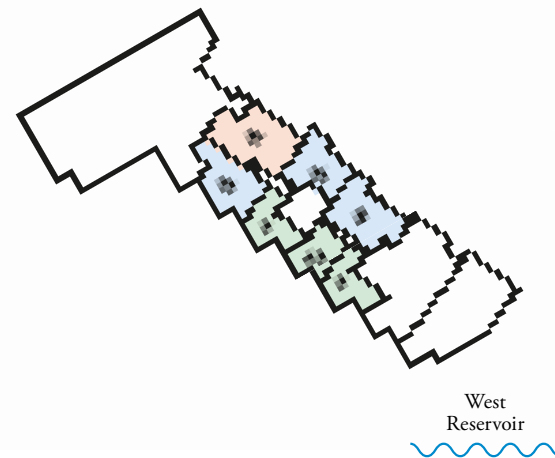
Ground floor



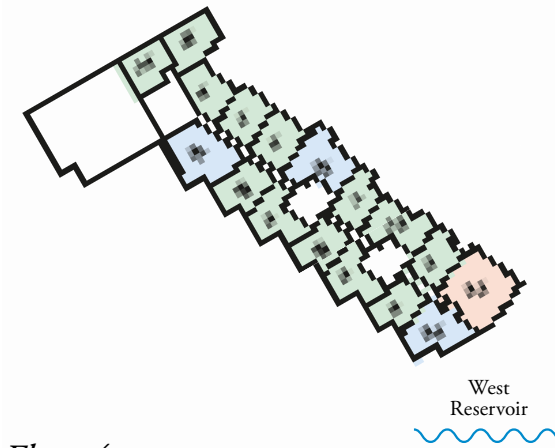
Floor 3



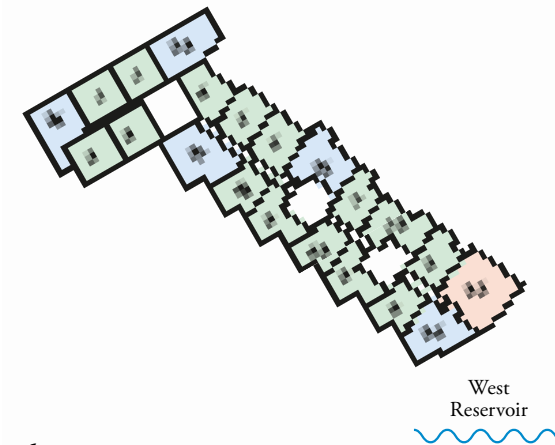
Floor 6



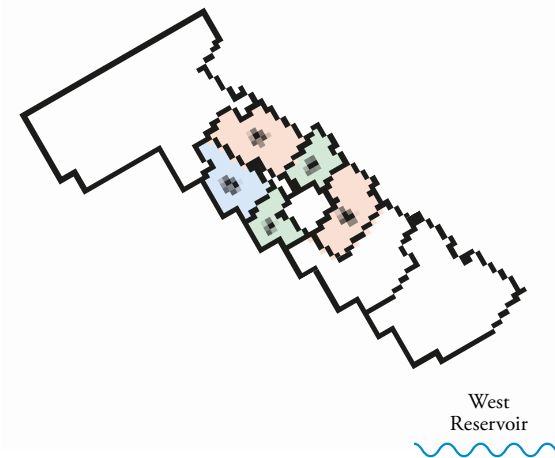
Floor 1



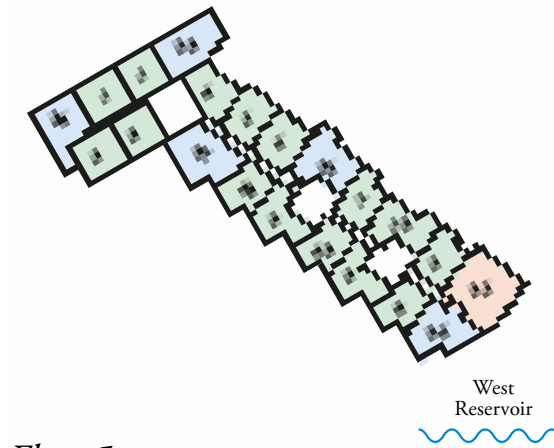
Floor 4



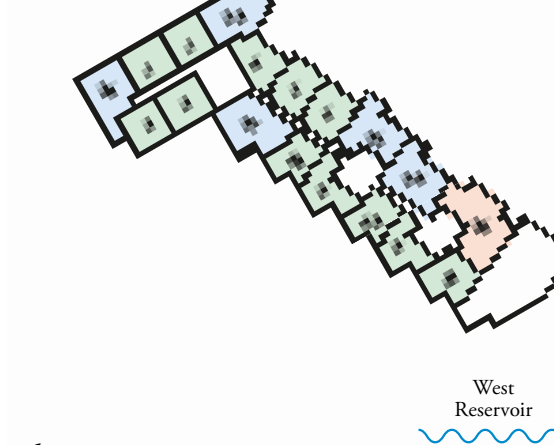
Floor 7



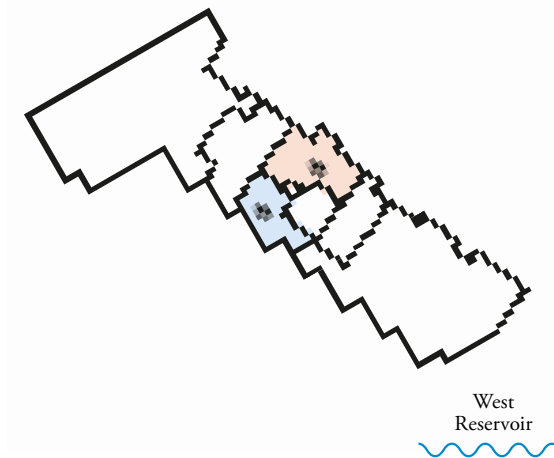
Floor 2



Floor 5



Floor 8



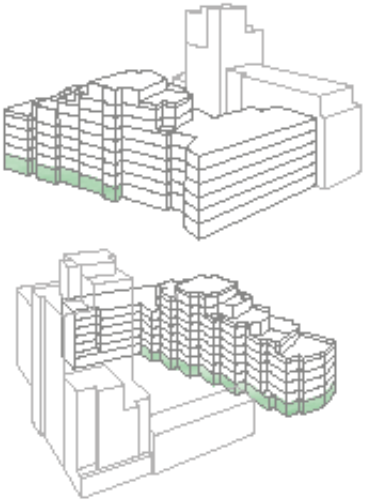
KEY

- One bed
- Two bed
- Three bed



Computer-enhanced image is indicative only and subject to planning.

Ground floor



G.02 Type 9 1 Bed	823.4 sqft	76.5 sqm
Apartment Area	565.1 sqft	53 sqm
External Area	258.3 sqft	24 sqm
Kitchen / Living Area	17'8" x 12'2"	5.4m x 3.7m
Bedroom	16'9" x 12'2"	5.1m x 3.7m
Terrace	24'11" x 19'4"	7.6m x 5.9m

G.03 Type 43 1 Bed	838.5 sqft	77.9 sqm
Apartment Area	559.7 sqft	52 sqm
External Area	278.8 sqft	25.9 sqm
Kitchen / Living Area	15'9" x 14'1"	4.8m x 4.3m
Bedroom	15'5" x 9'10"	4.7m x 3.0m
Terrace	19'4" x 19'0"	5.9m x 5.8m

G.04 Type 9 1 Bed	984.9 sqft	91.5 sqm
Apartment Area	565.1 sqft	52.5 sqm
External Area	419.8 sqft	39 sqm
Kitchen / Living Area	17'8" x 12'2"	5.4m x 3.7m
Bedroom	16'9" x 12'2"	5.1m x 3.7m
Terrace	27'11" x 22'11"	8.5m x 7.0m

G.05 Type 43 1 Bed	882.6 sqft	82 sqm
Apartment Area	559.7 sqft	52 sqm
External Area	322.9 sqft	30 sqm
Kitchen / Living Area	15'9" x 14'1"	4.8m x 4.3m
Bedroom	15'5" x 9'10"	4.7m x 3.0m
Terrace	25'7" x 19'0"	7.8m x 5.8m

G.09 Type 12 1 Bed + Study	1,052.7 sqft	97.8 sqm
Apartment Area	650.1 sqft	60.4 sqm
External Area	402.6 sqft	37.4 sqm
Kitchen / Living Area	19'4" x 13'1"	5.9m x 4.0m
Master Bedroom	13'1" x 9'2"	4.0m x 2.8m
Study	10'6" x 10'2"	3.2m x 3.1m
Terrace	30'6" x 15'1"	9.3m x 4.6m

G.10 Type 2 1 Bed	881.6 sqft	81.9 sqm
Apartment Area	572.6 sqft	53.3 sqm
External Area	308.9 sqft	28.7 sqm
Kitchen / Living Area	23'11 x 11'1"	7.3m x 3.4m
Bedroom	20'11" x 10'2"	6.4m x 3.1m
Terrace	25'3" x 14'9"	7.7m x 4.5m

G.01 Type 62 2 Bed	934.3 sqft	86.8 sqm
Apartment Area	794.4 sqft	73.8 sqm
External Area	139.9 sqft	13 sqm
Kitchen / Living Area	17'8" x 16'0"	5.4m x 4.9m
Master Bedroom	18'4" x 10'10"	5.6m x 3.3m
Bedroom 2	13'1" x 8'10"	4.0m x 2.7m
Terrace	15'1" x 9'11"	4.6m x 3.0m

G.06 Type 24 2 Bed	991.4 sqft	92.1 sqm
Apartment Area	743.8 sqft	69.1 sqm
External Area	247.6 sqft	23 sqm
Kitchen / Living Area	20'0" x 12'10"	6.1m x 3.9m
Master Bedroom	14'9" x 9'2"	4.5m x 2.8m
Bedroom 2	14'1" x 8'6"	4.3m x 2.6m
Terrace	23'4" x 18'1"	7.1m x 5.5m

G.08 Type 25 2 Bed	1,078.6 sqft	100.2 sqm
Apartment Area	806.2 sqft	74.9 sqm
External Area	272.3 sqft	25.3 sqm
Kitchen / Living Area	19'8" x 12'6"	6.0m x 3.8m
Master Bedroom	16'1" x 10'10"	4.9m x 3.3m
Bedroom 2	13'5" x 9'2"	4.1m x 2.8m
Terrace	34'5" x 7'2"	10.5m x 2.2m

G.11 Type 35 3 Bed	1555.4 sqft	144.5 sqm
Apartment Area	1,090.4 sqft	101.3 sqm
External Area	465 sqft	43.2 sqm
Kitchen / Living Area	24'6" x 10'10"	7.5m x 3.3m
Master Bedroom	16'1" x 11'2"	4.9m x 3.4m
Bedroom 2	10'6" x 9'2"	3.2m x 2.8m
Bedroom 3	13'11" x 9'2"	4.0m x 2.8m
Terrace	40'4" x 32'10"	12.3m x 10.0m



Floorplans shown for Willowbrook House are for approximate measurements only. Exact layouts and sizes may vary. All measurements may vary within a tolerance of 5%. The dimensions are not intended to be used for carpet sizes, appliance sizes or items of furniture.

First floor

1.02 Type 8 1 Bed	630.8 sqft	58.6 sqm
Apartment Area	567.3 sqft	52.7 sqm
External Area	63.5 sqft	5.9 sqm
Kitchen / Living Area	14'1" x 12'8"	4.3m x 3.9m
Bedroom	16'9" x 9'10"	5.1m x 3.0m
Balcony	8'10" x 7'3"	2.7m x 2.2m

1.03 Type 9 1 Bed	653.4 sqft	60.7 sqm
Apartment Area	565.1 sqft	52.5 sqm
External Area	88.3 sqft	8.2 sqm
Kitchen / Living Area	17'8" x 12'2"	5.4m x 3.7m
Bedroom	16'9" x 12'2"	5.1m x 3.7m
Balcony*	12'8" x 6'9"	3.9m x 2.1m

1.04 Type 43 1 Bed	621.1 sqft	57.7 sqm
Apartment Area	559.7 sqft	52 sqm
External Area	61.4 sqft	5.7 sqm
Kitchen / Living Area	15'9" x 14'1"	4.8m x 4.3m
Bedroom	15'5" x 9'10"	4.7m x 3.0m
Balcony	8'8" x 6'9"	2.7m x 2.1m

1.05 Type 9 1 Bed	653.4 sqft	60.7 sqm
Apartment Area	565.1 sqft	52.5 sqm
External Area	88.3 sqft	8.2 sqm
Kitchen / Living Area	17'8" x 12'2"	5.4m x 3.7m
Bedroom	16'9" x 12'2"	5.1m x 3.7m
Balcony*	12'8" x 6'9"	3.9m x 2.1m

1.06 Type 43 1 Bed	621.1 sqft	57.7 sqm
Apartment Area	559.7 sqft	52 sqm
External Area	61.4 sqft	5.7 sqm
Kitchen / Living Area	15'9" x 14'1"	4.8m x 4.3m
Bedroom	15'5" x 9'10"	4.7m x 3.0m
Balcony	8'8" x 6'9"	2.7m x 2.1m

1.08 Type 14 1 Bed	597.4 sqft	55.5 sqm
Apartment Area	543.6 sqft	50.5 sqm
External Area	53.8 sqft	5 sqm
Kitchen / Living Area	16'5" x 15'5"	5.0m x 4.7m
Bedroom	17'4" x 9'5"	5.3m x 2.9m
Balcony	10'8" x 4'11"	3.3m x 1.5m

1.09 Type 15 1 Bed	725.5 sqft	67.4 sqm
Apartment Area	645.8 sqft	60.1 sqm
External Area	79.7 sqft	7.4 sqm
Kitchen / Living Area	20'3" x 16'1"	6.2m x 4.9m
Bedroom	13'9" x 10'6"	4.2m x 3.2m
Balcony	16'5" x 4'11"	5.0m x 1.5m

1.10 Type 4 1 Bed	613.5 sqft	57 sqm
Apartment Area	558.7 sqft	51.9 sqm
External Area	54.9 sqft	5.1 sqm
Kitchen / Living Area	19'8" x 13'1"	6.0m x 4.0m
Bedroom	13'1" x 10'6"	4.0m x 3.2m
Balcony	11'2" x 4'11"	3.4m x 1.5m

1.11 Type 5 1 Bed	608.2 sqft	56.5 sqm
Apartment Area	553.3 sqft	51.4 sqm
External Area	54.9 sqft	5.1 sqm
Kitchen / Living Area	24'11" x 11'10"	7.6m x 3.6m
Bedroom	17'9" x 9'10"	5.4m x 3.0m
Balcony	11'2" x 4'11"	3.4m x 1.5m

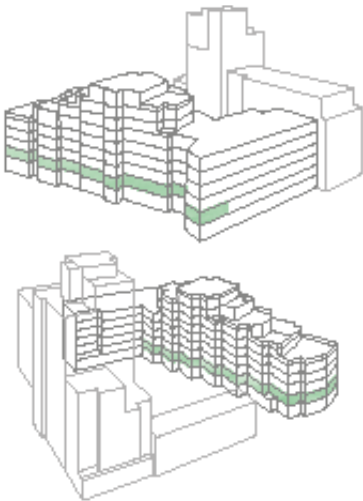
1.12 Type 6 1 Bed	654.5 sqft	60.8 sqm
Apartment Area	570.5 sqft	53 sqm
External Area	84 sqft	7.8 sqm
Kitchen / Living Area	24'11" x 12'5"	7.6m x 3.8m
Bedroom	17'5" x 9'10"	5.3m x 3.0m
Balcony	10'2" x 8'2"	3.1m x 2.5m

1.14 Type 7 1 Bed	593.1 sqft	55.1 sqm
Apartment Area	538.2 sqft	50 sqm
External Area	54.9 sqft	5.1 sqm
Kitchen / Living Area	23'4" x 10'10"	7.1m x 3.3m
Bedroom	21'8" x 9'2"	6.6m x 2.8m
Balcony	11'2" x 4'11"	3.4m x 1.5m

1.15 Type 12 1 Bed + Study	704 sqft	65.4 sqm
Apartment Area	650.1 sqft	60.4 sqm
External Area	53.8 sqft	5 sqm
Kitchen / Living Area	19'7" x 12'8"	6.0m x 3.9m
Master Bedroom	13'1" x 9'2"	4.0m x 2.8m
Study	10'6" x 10'2"	3.2m x 3.1m
Balcony	10'8" x 4'11"	3.3m x 1.5m

1.16 Type 2 1 Bed	629.7 sqft	58.5 sqm
Apartment Area	572.6 sqft	53.3 sqm
External Area	57 sqft	5.3 sqm
Kitchen / Living Area	23'11 x 11'1"	7.3m x 3.4m
Bedroom	20'11" x 10'2"	6.4m x 3.1m
Balcony	11'6" x 4'11"	3.5m x 1.5m

1.01 Type 26 2 Bed	887 sqft	82.4 sqm
Apartment Area	803 sqft	74.5 sqm
External Area	84 sqft	7.8 sqm
Kitchen / Living Area	16'5" x 15'5"	5.0m x 4.7m
Master Bedroom	16'5" x 10'10"	5.0m x 3.3m
Bedroom 2	13'1" x 8'10"	4.0m x 2.7m
Balcony	16'1" x 5'3"	4.9m x 1.6m



1.07 Type 27 2 Bed	958 sqft	89 sqm
Apartment Area	878.3 sqft	81.6 sqm
External Area	79.7 sqft	7.4 sqm
Kitchen / Living Area	20'0" x 15'1"	6.1m x 4.6m
Master Bedroom	14'1" x 9'2"	4.3m x 2.8m
Bedroom 2	12'6" x 11'2"	3.8m x 3.4m
Balcony	10'6" x 7'7"	3.2m x 2.3m

1.13 Type 25 2 Bed	909.6 sqft	84.5 sqm
Apartment Area	806.2 sqft	74.9 sqm
External Area	103.3 sqft	9.6 sqm
Kitchen / Living Area	19'8" x 12'6"	6.0m x 3.8m
Master Bedroom	16'1" x 10'10"	4.9m x 3.3m
Bedroom 2	13'5" x 9'2"	4.1m x 2.8m
Balcony	21'0" x 4'11"	6.4m x 1.5m

1.17 Type 35 3 Bed	1,167.9 sqft	108.5 sqm
Apartment Area	1,090.4 sqft	101.3 sqm
External Area	77.5 sqft	7.2 sqm
Kitchen / Living Area	24'6" x 10'10"	7.5m x 3.3m
Master Bedroom	16'1" x 11'2"	4.9m x 3.4m
Bedroom 2	10'6" x 9'2"	3.2m x 2.8m
Bedroom 3	13'11" x 9'2"	4.0m x 2.8m
Balcony	15'9" x 4'11"	4.8m x 1.5m



Floorplans shown for Willowbrook House are for approximate measurements only. Exact layouts and sizes may vary. All measurements may vary within a tolerance of 5%. The dimensions are not intended to be used for carpet sizes, appliance sizes or items of furniture.

Second floor

2.02 Type 8 1 Bed	630.8 sqft	58.6 sqm
Apartment Area	567.3 sqft	52.7 sqm
External Area	63.5 sqft	5.9 sqm
Kitchen / Living Area	14'1" x 12'8"	4.3m x 3.9m
Bedroom	16'9" x 9'10"	5.1m x 3.0m
Balcony	8'10" x 7'3"	2.7m x 2.2m

2.03, 2.05 Type 9 1 Bed	653.4 sqft	60.7 sqm
Apartment Area	565.1 sqft	52.5 sqm
External Area	88.3 sqft	8.2 sqm
Kitchen / Living Area	17'8" x 12'2"	5.4m x 3.7m
Bedroom	16'9" x 12'2"	5.1m x 3.7m
Balcony	12'8" x 6'9"	3.9m x 2.1m

2.04, 2.06 Type 43 1 Bed	621.1 sqft	57.7 sqm
Apartment Area	559.7 sqft	52 sqm
External Area	61.4 sqft	5.7 sqm
Kitchen / Living Area	15'9" x 14'1"	4.8m x 4.3m
Bedroom	15'5" x 9'10"	4.7m x 3.0m
Balcony	8'8" x 6'9"	2.7m x 2.1m

2.08, 2.19 Type 1 1 Bed	614.6 sqft	57.1 sqm
Apartment Area	560.8 sqft	52.1 sqm
External Area	53.8 sqft	5 sqm
Kitchen / Living Area	22'11" x 14'5"	7.0m x 4.4m
Bedroom	15'8" x 9'10"	4.8m x 3.0m
Balcony	10'9" x 4'11"	3.3m x 1.5m

2.10 Type 4 1 Bed	613.5 sqft	57 sqm
Apartment Area	558.7 sqft	51.9 sqm
External Area	54.9 sqft	5.1 sqm
Kitchen / Living Area	19'8" x 13'1"	6.0m x 4.0m
Bedroom	13'1" x 10'6"	4.0m x 3.2m
Balcony	11'2" x 4'11"	3.4m x 1.5m

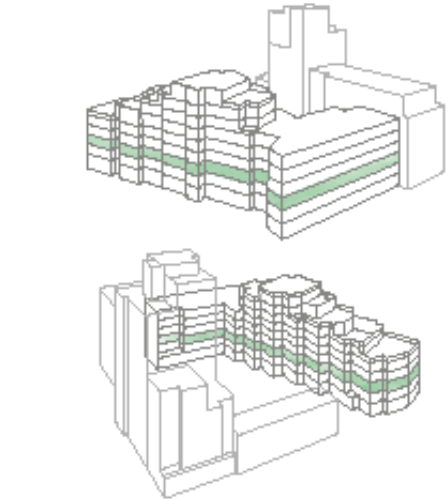
2.11 Type 5 1 Bed	608.2 sqft	56.5 sqm
Apartment Area	553.3 sqft	51.4 sqm
External Area	54.9 sqft	5.1 sqm
Kitchen / Living Area	24'11" x 11'10"	7.6m x 3.6m
Bedroom	17'9" x 9'10"	5.4m x 3.0m
Balcony	11'2" x 4'11"	3.4m x 1.5m

2.12 Type 6 1 Bed	654.5 sqft	60.8 sqm
Apartment Area	570.5 sqft	53 sqm
External Area	84 sqft	7.8 sqm
Kitchen / Living Area	24'11" x 12'5"	7.6m x 3.8m
Bedroom	17'5" x 9'10"	5.3m x 3.0m
Balcony	10'2" x 8'2"	3.1m x 2.5m

2.14 Type 7 1 Bed	593.1 sqft	55.1 sqm
Apartment Area	538.2 sqft	50 sqm
External Area	54.9 sqft	5.1 sqm
Kitchen / Living Area	23'4" x 10'10"	7.1m x 3.3m
Bedroom	21'8" x 9'2"	6.6m x 2.8m
Balcony	11'2" x 4'11"	3.4m x 1.5m

2.15 Type 12 1 Bed + Study	704 sqft	65.4 sqm
Apartment Area	650.1 sqft	60.4 sqm
External Area	53.8 sqft	5 sqm
Kitchen / Living Area	19'7" x 12'8"	6.0m x 3.9m
Master Bedroom	13'1" x 9'2"	4.0m x 2.8m
Study	10'6" x 10'2"	3.2m x 3.1m
Balcony	10'8" x 4'11"	3.3m x 1.5m

2.16 Type 2 1 Bed	629.7 sqft	58.5 sqm
Apartment Area	572.6 sqft	53.3 sqm
External Area	57 sqft	5.3 sqm
Kitchen / Living Area	23'11" x 11'1"	7.3m x 3.4m
Bedroom	20'11" x 10'2"	6.4m x 3.1m
Balcony	11'6" x 4'11"	3.5m x 1.5m

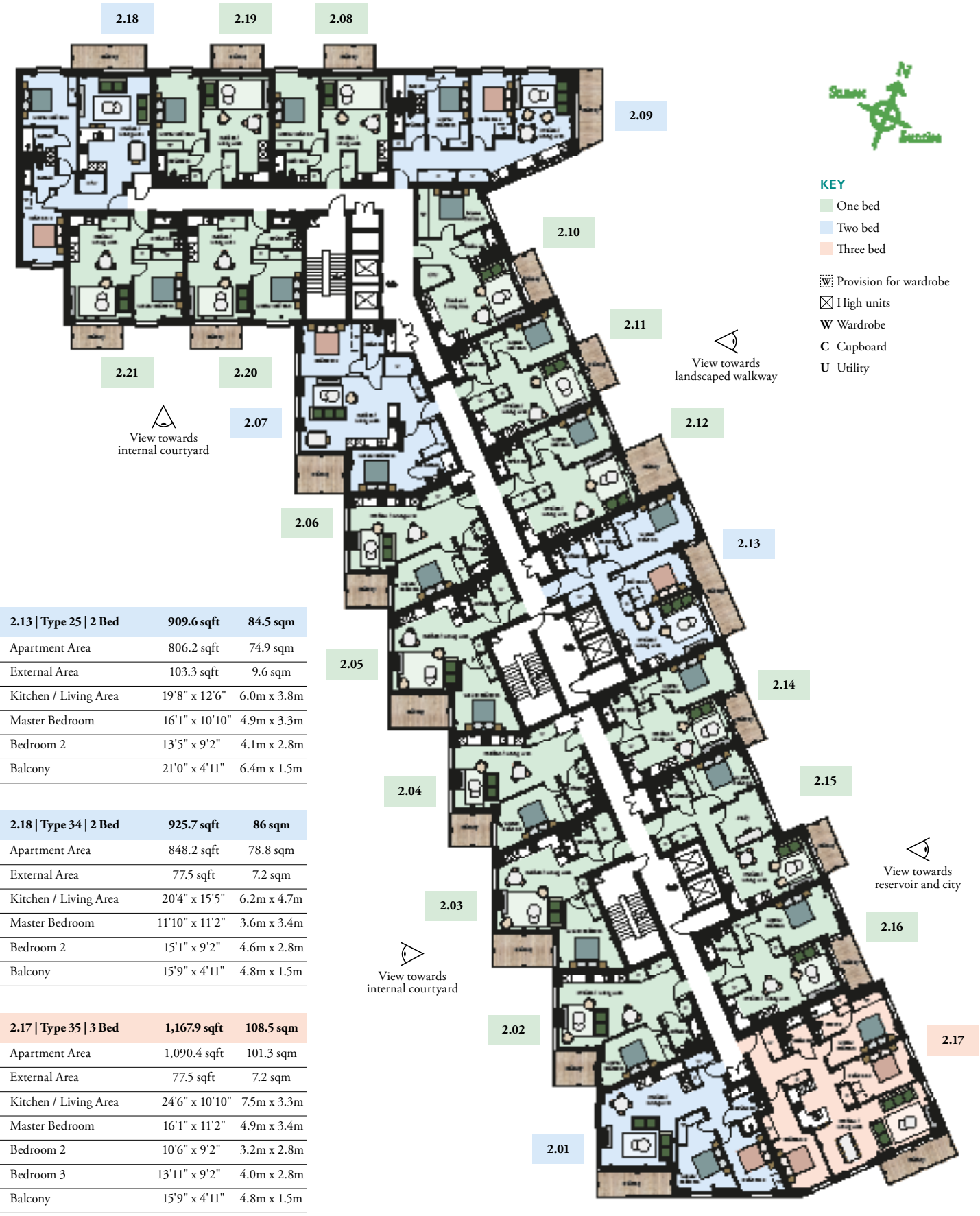


2.20, 2.21 Type 3 1 Bed	592 sqft	55 sqm
Apartment Area	538.2 sqft	50 sqm
External Area	53.8 sqft	5 sqm
Kitchen / Living Area	22'4" x 13'5"	6.8m x 4.1m
Bedroom	14'5" x 10'6"	4.4m x 3.2m
Balcony	10'9" x 4'11"	3.3m x 1.5m

2.01 Type 26 2 Bed	887 sqft	82.4 sqm
Apartment Area	803 sqft	74.5 sqm
External Area	84 sqft	7.8 sqm
Kitchen / Living Area	16'5" x 15'5"	5.0m x 4.7m
Master Bedroom	16'5" x 10'10"	5.0m x 3.3m
Bedroom 2	13'1" x 8'10"	4.0m x 2.7m
Balcony	16'1" x 5'3"	4.9m x 1.6m

2.07 Type 27 2 Bed	958 sqft	89 sqm
Apartment Area	878.3 sqft	81.6 sqm
External Area	79.7 sqft	7.4 sqm
Kitchen / Living Area	20'0" x 15'1"	6.1m x 4.6m
Master Bedroom	14'1" x 9'2"	4.3m x 2.8m
Bedroom 2	12'6" x 11'2"	3.8m x 3.4m
Balcony	10'6" x 7'7"	3.2m x 2.3m

2.09 Type 23 2 Bed	903.1 sqft	83.9 sqm
Apartment Area	823.4 sqft	76.5 sqm
External Area	79.7 sqft	7.4 sqm
Kitchen / Living Area	21'4" x 12'2"	6.5m x 3.7m
Master Bedroom	15'5" x 8'10"	4.7m x 2.7m
Bedroom 2	12'5" x 9'2"	3.8m x 2.8m
Balcony	16'5" x 4'11"	5.0m x 1.5m



2.13 Type 25 2 Bed	909.6 sqft	84.5 sqm
Apartment Area	806.2 sqft	74.9 sqm
External Area	103.3 sqft	9.6 sqm
Kitchen / Living Area	19'8" x 12'6"	6.0m x 3.8m
Master Bedroom	16'1" x 10'10"	4.9m x 3.3m
Bedroom 2	13'5" x 9'2"	4.1m x 2.8m
Balcony	21'0" x 4'11"	6.4m x 1.5m

2.18 Type 34 2 Bed	925.7 sqft	86 sqm
Apartment Area	848.2 sqft	78.8 sqm
External Area	77.5 sqft	7.2 sqm
Kitchen / Living Area	20'4" x 15'5"	6.2m x 4.7m
Master Bedroom	11'10" x 11'2"	3.6m x 3.4m
Bedroom 2	15'1" x 9'2"	4.6m x 2.8m
Balcony	15'9" x 4'11"	4.8m x 1.5m

2.17 Type 35 3 Bed	1,167.9 sqft	108.5 sqm
Apartment Area	1,090.4 sqft	101.3 sqm
External Area	77.5 sqft	7.2 sqm
Kitchen / Living Area	24'6" x 10'10"	7.5m x 3.3m
Master Bedroom	16'1" x 11'2"	4.9m x 3.4m
Bedroom 2	10'6" x 9'2"	3.2m x 2.8m
Bedroom 3	13'11" x 9'2"	4.0m x 2.8m
Balcony	15'9" x 4'11"	4.8m x 1.5m

Floorplans shown for Willowbrook House are for approximate measurements only. Exact layouts and sizes may vary. All measurements may vary within a tolerance of 5%. The dimensions are not intended to be used for carpet sizes, appliance sizes or items of furniture.

Third floor

3.02 Type 8 1 Bed	630.8 sqft	58.6 sqm
Apartment Area	567.3 sqft	52.7 sqm
External Area	63.5 sqft	5.9 sqm
Kitchen / Living Area	14'1" x 12'8"	4.3m x 3.9m
Bedroom	16'9" x 9'10"	5.1m x 3.0m
Balcony	8'10" x 7'3"	2.7m x 2.2m

3.03, 3.05 Type 9 1 Bed	653.4 sqft	60.7 sqm
Apartment Area	565.1 sqft	52.5 sqm
External Area	88.3 sqft	8.2 sqm
Kitchen / Living Area	17'8" x 12'2"	5.4m x 3.7m
Bedroom	16'9" x 12'2"	5.1m x 3.7m
Balcony	12'8" x 6'9"	3.9m x 2.1m

3.04, 3.06 Type 43 1 Bed	621.1 sqft	57.7 sqm
Apartment Area	559.7 sqft	52 sqm
External Area	61.4 sqft	5.7 sqm
Kitchen / Living Area	15'9" x 14'1"	4.8m x 4.3m
Bedroom	15'5" x 9'10"	4.7m x 3.0m
Balcony	8'8" x 6'9"	2.7m x 2.1m

3.08, 3.19 Type 1 1 Bed	614.6 sqft	57.1 sqm
Apartment Area	560.8 sqft	52.1 sqm
External Area	53.8 sqft	5 sqm
Kitchen / Living Area	22'11" x 14'5"	7.0m x 4.4m
Bedroom	15'8" x 9'10"	4.8m x 3.0m
Balcony	10'9" x 4'11"	3.3m x 1.5m

3.10 Type 4 1 Bed	613.5 sqft	57 sqm
Apartment Area	558.7 sqft	51.9 sqm
External Area	54.9 sqft	5.1 sqm
Kitchen / Living Area	19'8" x 13'1"	6.0m x 4.0m
Bedroom	13'1" x 10'6"	4.0m x 3.2m
Balcony	11'2" x 4'11"	3.4m x 1.5m

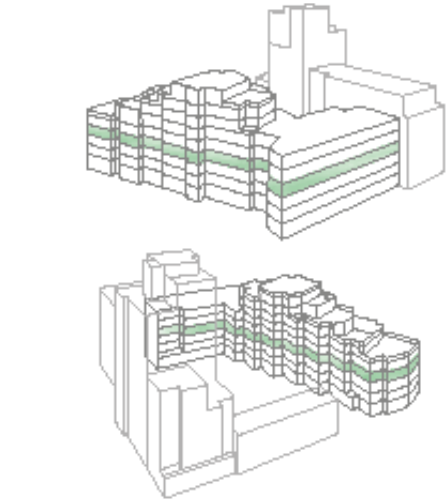
3.11 Type 5 1 Bed	608.2 sqft	56.5 sqm
Apartment Area	553.3 sqft	51.4 sqm
External Area	54.9 sqft	5.1 sqm
Kitchen / Living Area	24'11" x 11'10"	7.6m x 3.6m
Bedroom	17'9" x 9'10"	5.4m x 3.0m
Balcony	11'2" x 4'11"	3.4m x 1.5m

3.12 Type 6 1 Bed	654.5 sqft	60.8 sqm
Apartment Area	570.5 sqft	53 sqm
External Area	84 sqft	7.8 sqm
Kitchen / Living Area	24'11" x 12'5"	7.6m x 3.8m
Bedroom	17'5" x 9'10"	5.3m x 3.0m
Balcony	10'2" x 8'2"	3.1m x 2.5m

3.14 Type 7 1 Bed	593.1 sqft	55.1 sqm
Apartment Area	538.2 sqft	50 sqm
External Area	54.9 sqft	5.1 sqm
Kitchen / Living Area	23'4" x 10'10"	7.1m x 3.3m
Bedroom	21'8" x 9'2"	6.6m x 2.8m
Balcony	11'2" x 4'11"	3.4m x 1.5m

3.15 Type 12 1 Bed + Study	704 sqft	65.4 sqm
Apartment Area	650.1 sqft	60.4 sqm
External Area	53.8 sqft	5 sqm
Kitchen / Living Area	19'7" x 12'8"	6.0m x 3.9m
Master Bedroom	13'1" x 9'2"	4.0m x 2.8m
Study	10'6" x 10'2"	3.2m x 3.1m
Balcony	10'8" x 4'11"	3.3m x 1.5m

3.16 Type 2 1 Bed	629.7 sqft	58.5 sqm
Apartment Area	572.6 sqft	53.3 sqm
External Area	57 sqft	5.3 sqm
Kitchen / Living Area	23'11" x 11'1"	7.3m x 3.4m
Bedroom	20'11" x 10'2"	6.4m x 3.1m
Balcony	11'6" x 4'11"	3.5m x 1.5m



3.20, 3.21 Type 3 1 Bed	592 sqft	55 sqm
Apartment Area	538.2 sqft	50 sqm
External Area	53.8 sqft	5 sqm
Kitchen / Living Area	22'4" x 13'5"	6.8m x 4.1m
Bedroom	14'5" x 10'6"	4.4m x 3.2m
Balcony	10'9" x 4'11"	3.3m x 1.5m

3.01 Type 26 2 Bed	887 sqft	82.4 sqm
Apartment Area	803 sqft	74.5 sqm
External Area	84 sqft	7.8 sqm
Kitchen / Living Area	16'5" x 15'5"	5.0m x 4.7m
Master Bedroom	16'5" x 10'10"	5.0m x 3.3m
Bedroom 2	13'1" x 8'10"	4.0m x 2.7m
Balcony	16'1" x 5'3"	4.9m x 1.6m

3.07 Type 27 2 Bed	958 sqft	89 sqm
Apartment Area	878.3 sqft	81.6 sqm
External Area	79.7 sqft	7.4 sqm
Kitchen / Living Area	20'0" x 15'1"	6.1m x 4.6m
Master Bedroom	14'1" x 9'2"	4.3m x 2.8m
Bedroom 2	12'6" x 11'2"	3.8m x 3.4m
Balcony	10'6" x 7'7"	3.2m x 2.3m

3.09 Type 23 2 Bed	903.1 sqft	83.9 sqm
Apartment Area	823.4 sqft	76.5 sqm
External Area	79.7 sqft	7.4 sqm
Kitchen / Living Area	21'4" x 12'2"	6.5m x 3.7m
Master Bedroom	15'5" x 8'10"	4.7m x 2.7m
Bedroom 2	12'5" x 9'2"	3.8m x 2.8m
Balcony	16'5" x 4'11"	5.0m x 1.5m



3.13 Type 25 2 Bed	909.6 sqft	84.5 sqm
Apartment Area	806.2 sqft	74.9 sqm
External Area	103.3 sqft	9.6 sqm
Kitchen / Living Area	19'8" x 12'6"	6.0m x 3.8m
Master Bedroom	16'1" x 10'10"	4.9m x 3.3m
Bedroom 2	13'5" x 9'2"	4.1m x 2.8m
Balcony	21'0" x 4'11"	6.4m x 1.5m

3.18 Type 34 2 Bed	925.7 sqft	86 sqm
Apartment Area	848.2 sqft	78.8 sqm
External Area	77.5 sqft	7.2 sqm
Kitchen / Living Area	20'4" x 15'5"	6.2m x 4.7m
Master Bedroom	11'10" x 11'2"	3.6m x 3.4m
Bedroom 2	15'1" x 9'2"	4.6m x 2.8m
Balcony	15'9" x 4'11"	4.8m x 1.5m

3.17 Type 35 3 Bed	1,167.9 sqft	108.5 sqm
Apartment Area	1,090.4 sqft	101.3 sqm
External Area	77.5 sqft	7.2 sqm
Kitchen / Living Area	24'6" x 10'10"	7.5m x 3.3m
Master Bedroom	16'1" x 11'2"	4.9m x 3.4m
Bedroom 2	10'6" x 9'2"	3.2m x 2.8m
Bedroom 3	13'11" x 9'2"	4.0m x 2.8m
Balcony	15'9" x 4'11"	4.8m x 1.5m

Floorplans shown for Willowbrook House are for approximate measurements only. Exact layouts and sizes may vary. All measurements may vary within a tolerance of 5%. The dimensions are not intended to be used for carpet sizes, appliance sizes or items of furniture.



West Reservoir

Fourth floor

4.02 Type 8 1 Bed	630.8 sqft	58.6 sqm
Apartment Area	567.3 sqft	52.7 sqm
External Area	63.5 sqft	5.9 sqm
Kitchen / Living Area	14'1" x 12'8"	4.3m x 3.9m
Bedroom	16'9" x 9'10"	5.1m x 3.0m
Balcony	8'10" x 7'3"	2.7m x 2.2m

4.03, 4.05 Type 9 1 Bed	653.4 sqft	60.7 sqm
Apartment Area	565.1 sqft	52.5 sqm
External Area	88.3 sqft	8.2 sqm
Kitchen / Living Area	17'8" x 12'2"	5.4m x 3.7m
Bedroom	16'9" x 12'2"	5.1m x 3.7m
Balcony	12'8" x 6'9"	3.9m x 2.1m

4.04, 4.06 Type 43 1 Bed	621.1 sqft	57.7 sqm
Apartment Area	559.7 sqft	52 sqm
External Area	61.4 sqft	5.7 sqm
Kitchen / Living Area	15'9" x 14'1"	4.8m x 4.3m
Bedroom	15'5" x 9'10"	4.7m x 3.0m
Balcony	8'8" x 6'9"	2.7m x 2.1m

4.08, 4.19 Type 1 1 Bed	614.6 sqft	57.1 sqm
Apartment Area	560.8 sqft	52.1 sqm
External Area	53.8 sqft	5 sqm
Kitchen / Living Area	22'11" x 14'5"	7.0m x 4.4m
Bedroom	15'8" x 9'10"	4.8m x 3.0m
Balcony	10'9" x 4'11"	3.3m x 1.5m

4.10 Type 4 1 Bed	613.5 sqft	57 sqm
Apartment Area	558.7 sqft	51.9 sqm
External Area	54.9 sqft	5.1 sqm
Kitchen / Living Area	19'8" x 13'1"	6.0m x 4.0m
Bedroom	13'1" x 10'6"	4.0m x 3.2m
Balcony	11'2" x 4'11"	3.4m x 1.5m

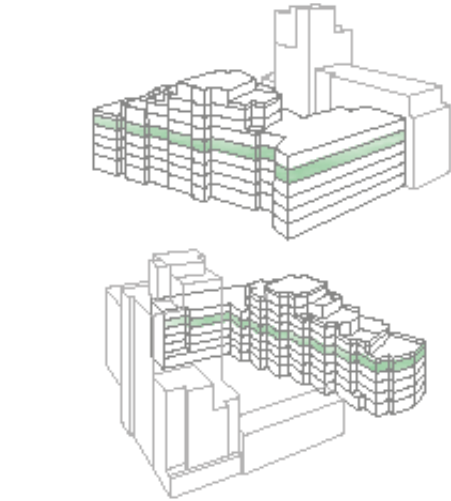
4.11 Type 5 1 Bed	608.2 sqft	56.5 sqm
Apartment Area	553.3 sqft	51.4 sqm
External Area	54.9 sqft	5.1 sqm
Kitchen / Living Area	24'11" x 11'10"	7.6m x 3.6m
Bedroom	17'9" x 9'10"	5.4m x 3.0m
Balcony	11'2" x 4'11"	3.4m x 1.5m

4.12 Type 6 1 Bed	654.5 sqft	60.8 sqm
Apartment Area	570.5 sqft	53 sqm
External Area	84 sqft	7.8 sqm
Kitchen / Living Area	24'11" x 12'5"	7.6m x 3.8m
Bedroom	17'5" x 9'10"	5.3m x 3.0m
Balcony	10'2" x 8'2"	3.1m x 2.5m

4.14 Type 7 1 Bed	593.1 sqft	55.1 sqm
Apartment Area	538.2 sqft	50 sqm
External Area	54.9 sqft	5.1 sqm
Kitchen / Living Area	23'4" x 10'10"	7.1m x 3.3m
Bedroom	21'8" x 9'2"	6.6m x 2.8m
Balcony	11'2" x 4'11"	3.4m x 1.5m

4.15 Type 12 1 Bed + Study	704 sqft	65.4 sqm
Apartment Area	650.1 sqft	60.4 sqm
External Area	53.8 sqft	5 sqm
Kitchen / Living Area	19'7" x 12'8"	6.0m x 3.9m
Master Bedroom	13'1" x 9'2"	4.0m x 2.8m
Study	10'6" x 10'2"	3.2m x 3.1m
Balcony	10'8" x 4'11"	3.3m x 1.5m

4.16 Type 2 1 Bed	629.7 sqft	58.5 sqm
Apartment Area	572.6 sqft	53.3 sqm
External Area	57 sqft	5.3 sqm
Kitchen / Living Area	23'11" x 11'1"	7.3m x 3.4m
Bedroom	20'11" x 10'2"	6.4m x 3.1m
Balcony	11'6" x 4'11"	3.5m x 1.5m

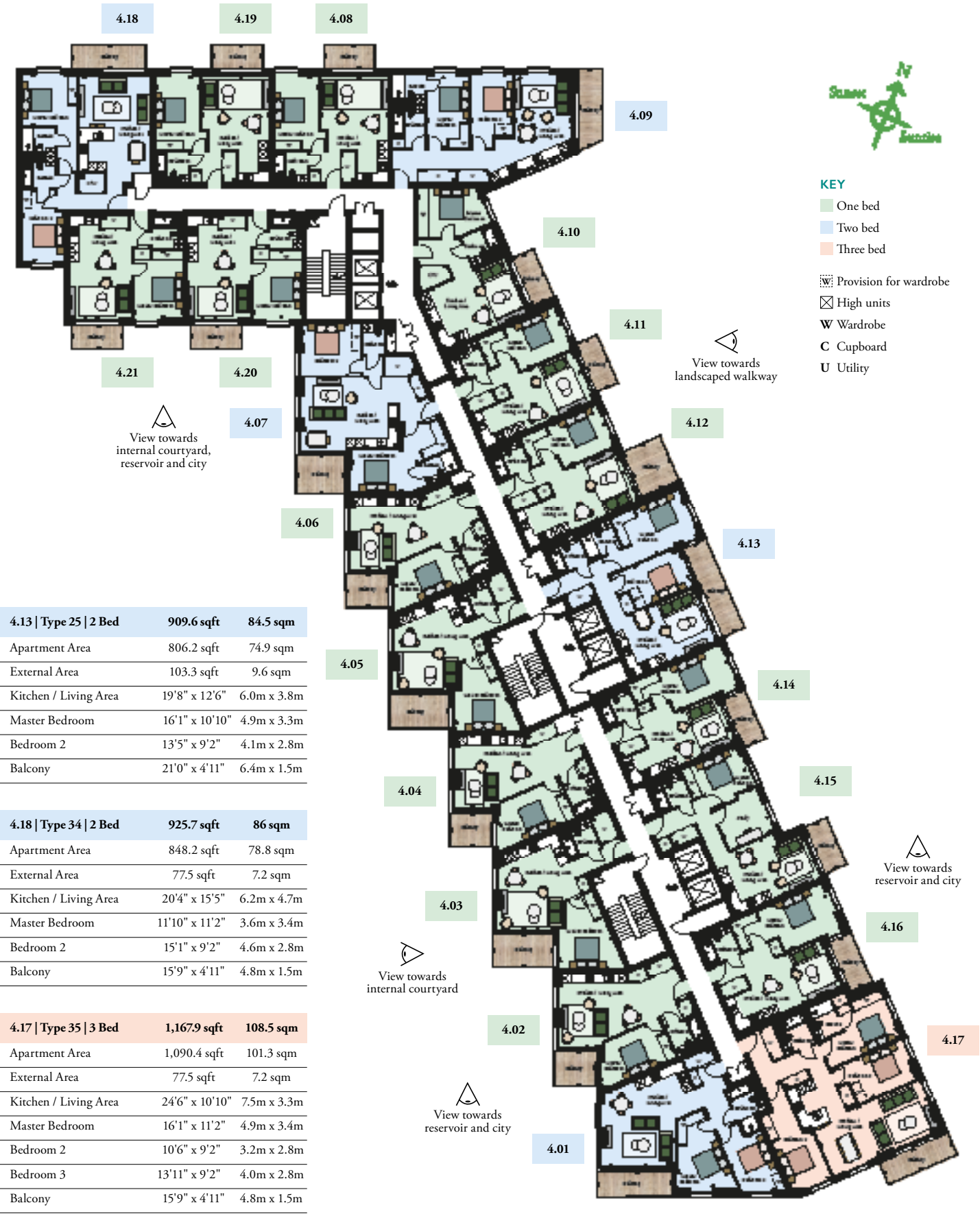


4.20, 4.21 Type 3 1 Bed	592 sqft	55 sqm
Apartment Area	538.2 sqft	50 sqm
External Area	53.8 sqft	5 sqm
Kitchen / Living Area	22'4" x 13'5"	6.8m x 4.1m
Bedroom	14'5" x 10'6"	4.4m x 3.2m
Balcony	10'9" x 4'11"	3.3m x 1.5m

4.01 Type 26 2 Bed	887 sqft	82.4 sqm
Apartment Area	803 sqft	74.5 sqm
External Area	84 sqft	7.8 sqm
Kitchen / Living Area	16'5" x 15'5"	5.0m x 4.7m
Master Bedroom	16'5" x 10'10"	5.0m x 3.3m
Bedroom 2	13'1" x 8'10"	4.0m x 2.7m
Balcony	16'1" x 5'3"	4.9m x 1.6m

4.07 Type 27 2 Bed	958 sqft	89 sqm
Apartment Area	878.3 sqft	81.6 sqm
External Area	79.7 sqft	7.4 sqm
Kitchen / Living Area	20'0" x 15'1"	6.1m x 4.6m
Master Bedroom	14'1" x 9'2"	4.3m x 2.8m
Bedroom 2	12'6" x 11'2"	3.8m x 3.4m
Balcony	10'6" x 7'7"	3.2m x 2.3m

4.09 Type 23 2 Bed	903.1 sqft	83.9 sqm
Apartment Area	823.4 sqft	76.5 sqm
External Area	79.7 sqft	7.4 sqm
Kitchen / Living Area	21'4" x 12'2"	6.5m x 3.7m
Master Bedroom	15'5" x 8'10"	4.7m x 2.7m
Bedroom 2	12'5" x 9'2"	3.8m x 2.8m
Balcony	16'5" x 4'11"	5.0m x 1.5m



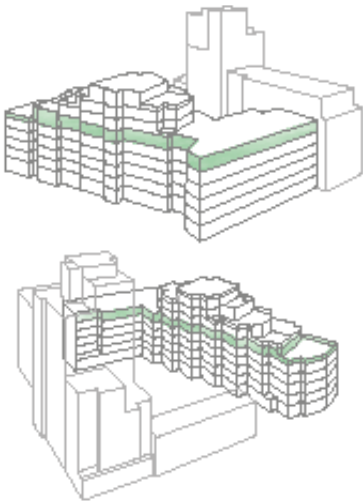
4.13 Type 25 2 Bed	909.6 sqft	84.5 sqm
Apartment Area	806.2 sqft	74.9 sqm
External Area	103.3 sqft	9.6 sqm
Kitchen / Living Area	19'8" x 12'6"	6.0m x 3.8m
Master Bedroom	16'1" x 10'10"	4.9m x 3.3m
Bedroom 2	13'5" x 9'2"	4.1m x 2.8m
Balcony	21'0" x 4'11"	6.4m x 1.5m

4.18 Type 34 2 Bed	925.7 sqft	86 sqm
Apartment Area	848.2 sqft	78.8 sqm
External Area	77.5 sqft	7.2 sqm
Kitchen / Living Area	20'4" x 15'5"	6.2m x 4.7m
Master Bedroom	11'10" x 11'2"	3.6m x 3.4m
Bedroom 2	15'1" x 9'2"	4.6m x 2.8m
Balcony	15'9" x 4'11"	4.8m x 1.5m

4.17 Type 35 3 Bed	1,167.9 sqft	108.5 sqm
Apartment Area	1,090.4 sqft	101.3 sqm
External Area	77.5 sqft	7.2 sqm
Kitchen / Living Area	24'6" x 10'10"	7.5m x 3.3m
Master Bedroom	16'1" x 11'2"	4.9m x 3.4m
Bedroom 2	10'6" x 9'2"	3.2m x 2.8m
Bedroom 3	13'11" x 9'2"	4.0m x 2.8m
Balcony	15'9" x 4'11"	4.8m x 1.5m

Floorplans shown for Willowbrook House are for approximate measurements only. Exact layouts and sizes may vary. All measurements may vary within a tolerance of 5%. The dimensions are not intended to be used for carpet sizes, appliance sizes or items of furniture.

Fifth floor



5.02 Type 13 1 Bed	1,275.5 sqft	118.5 sqm
Apartment Area	603.9 sqft	56.1 sqm
External Area	671.7 sqft	62.4 sqm
Kitchen / Living Area	22'8" x 19'0"	6.9m x 5.8m
Bedroom	15'9" x 8'10"	4.8m x 2.7m
Balcony	8'10" x 6'9"	2.7m x 2.1m
Terrace	30'2" x 29'10"	9.2m x 9.1m

5.03, 5.05 Type 9 1 Bed	653.4 sqft	60.7 sqm
Apartment Area	565.1 sqft	52.5 sqm
External Area	88.3 sqft	8.2 sqm
Kitchen / Living Area	17'8" x 12'2"	5.4m x 3.7m
Bedroom	16'9" x 12'2"	5.1m x 3.7m
Balcony	12'8" x 6'9"	3.9m x 2.1m

5.04, 5.06 Type 43 1 Bed	621.1 sqft	57.7 sqm
Apartment Area	559.7 sqft	52 sqm
External Area	61.4 sqft	5.7 sqm
Kitchen / Living Area	15'9" x 14'1"	4.8m x 4.3m
Bedroom	15'5" x 9'10"	4.7m x 3.0m
Balcony	8'8" x 6'9"	2.7m x 2.1m

5.08, 5.19 Type 1 1 Bed	614.6 sqft	57.1 sqm
Apartment Area	558.7 sqft	52.3 sqm
External Area	53.8 sqft	5 sqm
Kitchen / Living Area	22'11" x 14'5"	7.0m x 4.4m
Bedroom	15'8" x 9'10"	4.8m x 3.0m
Balcony	10'9" x 4'11"	3.3m x 1.5m

5.10 Type 4 1 Bed	613.5 sqft	57 sqm
Apartment Area	558.7 sqft	51.9 sqm
External Area	54.9 sqft	5.1 sqm
Kitchen / Living Area	19'8" x 13'1"	6.0m x 4.0m
Bedroom	13'1" x 10'6"	4.0m x 3.2m
Balcony	11'2" x 4'11"	3.4m x 1.5m

5.11 Type 5 1 Bed	608.2 sqft	56.5 sqm
Apartment Area	553.3 sqft	51.4 sqm
External Area	54.9 sqft	5.1 sqm
Kitchen / Living Area	24'11" x 11'10"	7.6m x 3.6m
Bedroom	17'9" x 9'10"	5.4m x 3.0m
Balcony	11'2" x 4'11"	3.4m x 1.5m

5.12 Type 6 1 Bed	654.5 sqft	60.8 sqm
Apartment Area	570.5 sqft	53 sqm
External Area	84 sqft	7.8 sqm
Kitchen / Living Area	24'11" x 12'5"	7.6m x 3.8m
Bedroom	17'5" x 9'10"	5.3m x 3.0m
Balcony	10'2" x 8'2"	3.1m x 2.5m

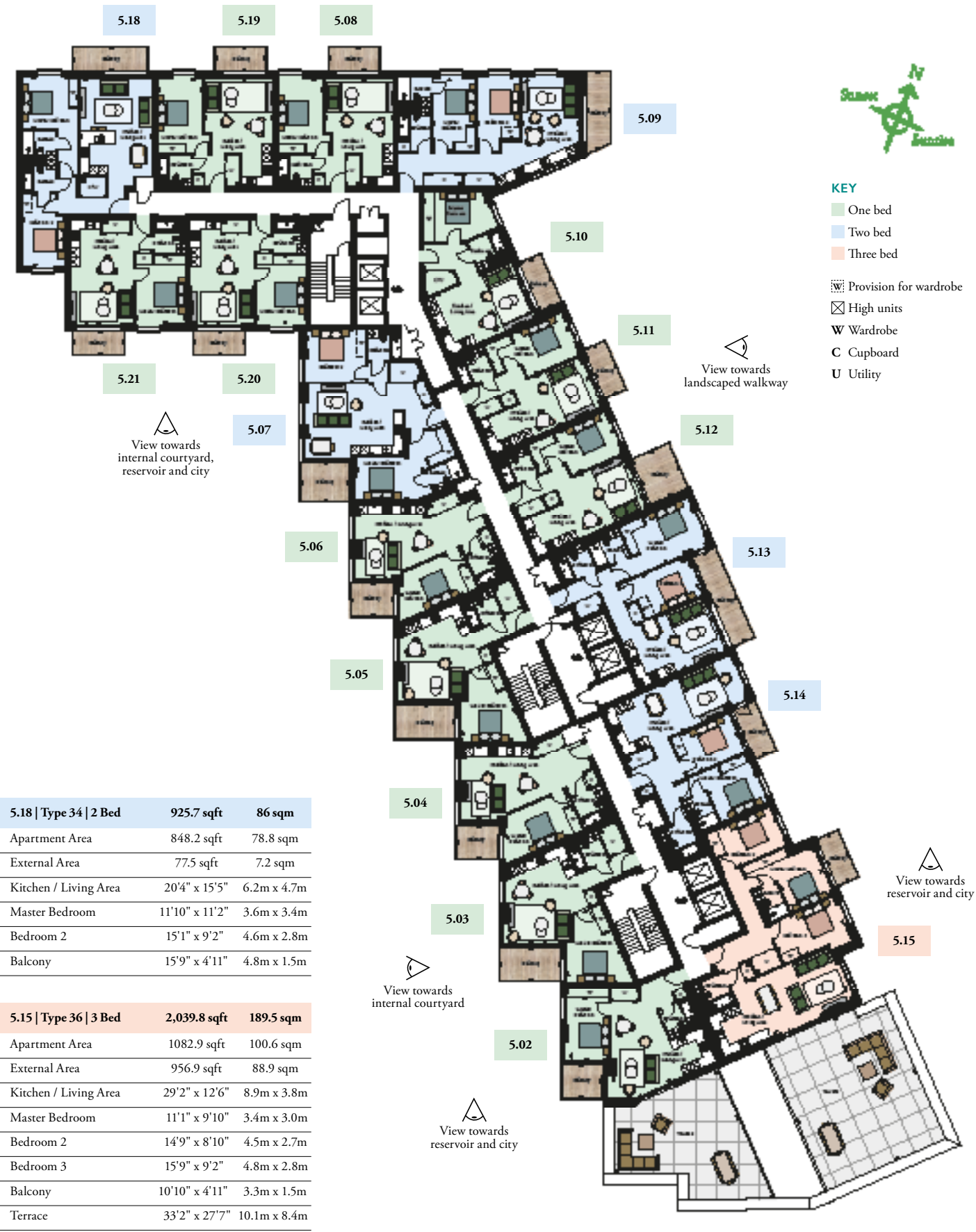
5.20, 5.21 Type 3 1 Bed	592 sqft	55 sqm
Apartment Area	538.2 sqft	50 sqm
External Area	53.8 sqft	5 sqm
Kitchen / Living Area	22'4" x 13'5"	6.8m x 4.1m
Bedroom	14'5" x 10'6"	4.4m x 3.2m
Balcony	10'9" x 4'11"	3.3m x 1.5m

5.07 Type 27 2 Bed	958 sqft	89 sqm
Apartment Area	878.3 sqft	81.6 sqm
External Area	79.7 sqft	7.4 sqm
Kitchen / Living Area	20'0" x 15'1"	6.1m x 4.6m
Master Bedroom	14'1" x 9'2"	4.3m x 2.8m
Bedroom 2	12'6" x 11'2"	3.8m x 3.4m
Balcony	10'6" x 7'7"	3.2m x 2.3m

5.09 Type 23 2 Bed	903.1 sqft	83.9 sqm
Apartment Area	823.4 sqft	76.5 sqm
External Area	79.7 sqft	7.4 sqm
Kitchen / Living Area	21'4" x 12'2"	6.5m x 3.7m
Master Bedroom	15'5" x 8'10"	4.7m x 2.7m
Bedroom 2	12'5" x 9'2"	3.8m x 2.8m
Balcony	16'5" x 4'11"	5.0m x 1.5m

5.13 Type 25 2 Bed	909.6 sqft	84.5 sqm
Apartment Area	806.2 sqft	74.9 sqm
External Area	103.3 sqft	9.6 sqm
Kitchen / Living Area	19'8" x 12'6"	6.0m x 3.8m
Master Bedroom	16'1" x 10'10"	4.9m x 3.3m
Bedroom 2	13'5" x 9'2"	4.1m x 2.8m
Balcony	21'0" x 4'11"	6.4m x 1.5m

5.14 Type 28 2 Bed	857.9 sqft	79.7 sqm
Apartment Area	803 sqft	74.6 sqm
External Area	54.9 sqft	5.1 sqm
Kitchen / Living Area	29'2" x 10'10"	8.9m x 3.3m
Master Bedroom	11'2" x 10'6"	3.4m x 3.2m
Bedroom 2	13'1" x 9'2"	4.0m x 2.8m
Balcony	11'2" x 4'11"	3.4m x 1.5m

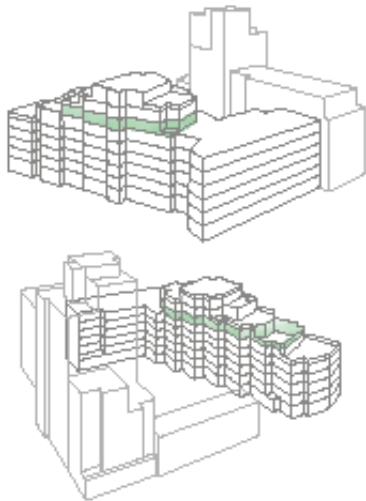


5.18 Type 34 2 Bed	925.7 sqft	86 sqm
Apartment Area	848.2 sqft	78.8 sqm
External Area	77.5 sqft	7.2 sqm
Kitchen / Living Area	20'4" x 15'5"	6.2m x 4.7m
Master Bedroom	11'10" x 11'2"	3.6m x 3.4m
Bedroom 2	15'1" x 9'2"	4.6m x 2.8m
Balcony	15'9" x 4'11"	4.8m x 1.5m

5.15 Type 36 3 Bed	2,039.8 sqft	189.5 sqm
Apartment Area	1082.9 sqft	100.6 sqm
External Area	956.9 sqft	88.9 sqm
Kitchen / Living Area	29'2" x 12'6"	8.9m x 3.8m
Master Bedroom	11'1" x 9'10"	3.4m x 3.0m
Bedroom 2	14'9" x 8'10"	4.5m x 2.7m
Bedroom 3	15'9" x 9'2"	4.8m x 2.8m
Balcony	10'10" x 4'11"	3.3m x 1.5m
Terrace	33'2" x 27'7"	10.1m x 8.4m

Floorplans shown for Willowbrook House are for approximate measurements only. Exact layouts and sizes may vary. All measurements may vary within a tolerance of 5%. The dimensions are not intended to be used for carpet sizes, appliance sizes or items of furniture.

Sixth floor



6.03 Type 9 1 Bed	653.4 sqft	60.7 sqm
Apartment Area	565.1 sqft	52.5 sqm
External Area	88.3 sqft	8.2 sqm
Kitchen / Living Area	17'8" x 12'2"	5.4m x 3.7m
Bedroom	16'9" x 12'2"	5.1m x 3.7m
Balcony	12'8" x 6'9"	3.9m x 2.1m

6.04 Type 43 1 Bed	621.1 sqft	57.7 sqm
Apartment Area	559.7 sqft	52 sqm
External Area	61.4 sqft	5.7 sqm
Kitchen / Living Area	15'9" x 14'1"	4.8m x 4.3m
Bedroom	15'5" x 9'10"	4.7m x 3.0m
Balcony	8'8" x 6'9"	2.7m x 2.1m

6.05 Type 9 1 Bed	653.4 sqft	60.7 sqm
Apartment Area	565.1 sqft	52.5 sqm
External Area	88.3 sqft	8.2 sqm
Kitchen / Living Area	17'8" x 12'2"	5.4m x 3.7m
Bedroom	16'9" x 12'2"	5.1m x 3.7m
Balcony	12'8" x 6'9"	3.9m x 2.1m

6.01 Type 31 2 Bed	1,578 sqft	146.6 sqm
Apartment Area	977.4 sqft	90.8 sqm
External Area	600.6 sqft	55.8 sqm
Kitchen / Living Area	23'11" x 19'4"	7.3m x 5.9m
Master Bedroom	13'9" x 10'10"	4.2m x 3.3m
Bedroom 2	11'6" x 10'6"	3.5m x 3.2m
Balcony	11'2" x 4'11"	3.4m x 1.5m
Terrace	32'10" x 18'4"	10.0m x 5.6m

6.02 Type 25 2 Bed	909.6 sqft	84.5 sqm
Apartment Area	806.2 sqft	74.9 sqm
External Area	103.3 sqft	9.6 sqm
Kitchen / Living Area	19'8" x 12'6"	6.0m x 3.8m
Master Bedroom	16'1" x 10'10"	4.9m x 3.3m
Bedroom 2	13'5" x 9'2"	4.1m x 2.8m
Balcony	21'0" x 4'11"	6.4m x 1.5m

6.07 Type 29 2 Bed	1,137.8 sqft	105.7 sqm
Apartment Area	918.2 sqft	85.3 sqm
External Area	219.6 sqft	20.4 sqm
Dining / Kitchen	22'0" x 11'10"	6.7m x 3.6m
Living Area	14'1" x 10'2"	4.3m x 3.1m
Master Bedroom	12'1" x 9'2"	3.7m x 2.8m
Bedroom 2	12'10" x 9'11"	3.9m x 3.0m
Balcony	8'10" x 6'11"	2.7m x 2.1m
Terrace	15'1" x 6'7"	4.6m x 2.0m

6.06 Type 37 3 Bed	1,429.5 sqft	132.8 sqm
Apartment Area	1,201.3 sqft	111.6 sqm
External Area	228.2 sqft	21.2 sqm
Kitchen / Living Area	24'11" x 21'4"	7.6m x 6.5m
Master Bedroom	9'10" x 9'2"	3.0m x 2.8m
Bedroom 2	13'1" x 10'2"	4.0m x 3.1m
Bedroom 3	11'10" x 9'6"	3.6m x 2.9m
Balcony 1	11'2" x 4'7"	3.4m x 1.4m
Balcony 2	10'2" x 8'2"	3.1m x 2.5m
Terrace	10'2" x 9'2"	3.1m x 2.8m



KEY

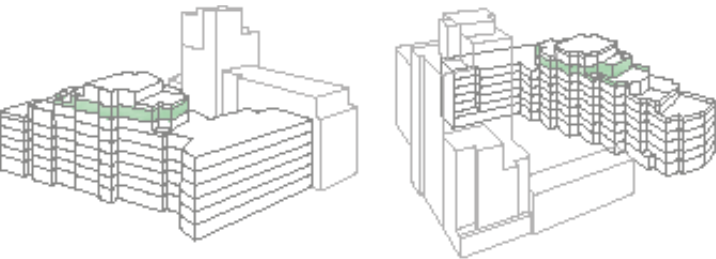
- One bed
- Two bed
- Three bed

- Provision for wardrobe
- High units
- Wardrobe
- Cupboard
- Utility



Floorplans shown for Willowbrook House are for approximate measurements only. Exact layouts and sizes may vary. All measurements may vary within a tolerance of 5%. The dimensions are not intended to be used for carpet sizes, appliance sizes or items of furniture.

Seventh floor



7.02 Type 10 1 Bed	667.4 sqft	62 sqm
Apartment Area	612.5 sqft	57 sqm
External Area	54.9 sqft	5.1 sqm
Kitchen / Living Area	19'4" x 12'1"	5.9m x 3.7m
Bedroom	23'11" x 10'6"	7.3m x 3.2m
Balcony	11'2" x 4'11"	3.4m x 1.5m

7.05 Type 9 1 Bed	653.4 sqft	60.7 sqm
Apartment Area	565.1 sqft	52.5 sqm
External Area	88.3 sqft	8.2 sqm
Kitchen / Living Area	17'8" x 12'2"	5.4m x 3.7m
Bedroom	16'9" x 12'2"	5.1m x 3.7m
Balcony	12'8" x 6'9"	3.9m x 2.1m

7.07 Type 29 2 Bed	974.5 sqft	91 sqm
Apartment Area	918.2 sqft	85.3 sqm
External Area	61.4 sqft	5.7 sqm
Dining / Kitchen	22'0" x 11'10"	6.7m x 3.6m
Living Area	14'1" x 10'2"	4.3m x 3.1m
Master Bedroom	12'1" x 9'2"	3.7m x 2.8m
Bedroom 2	12'10" x 9'11"	3.9m x 3.0m
Balcony	8'10" x 6'11"	2.7m x 2.1m

7.01 Type 38 3 Bed	2,294.9 sqft	213.2 sqm
Apartment Area	1,082.9 sqft	100.6 sqm
External Area	1,212 sqft	112.6 sqm
Kitchen / Living Area	20'8" x 20'0"	6.3m x 6.1m
Master Bedroom	12'6" x 9'10"	3.8m x 3.0m
Bedroom 2	13'5" x 10'2"	4.1m x 3.1m
Bedroom 3	14'5" x 9'2"	4.4m x 2.8m
Balcony	11'2" x 4'11"	3.4m x 1.5m
Terrace	58'4" x 31'6"	17.8m x 9.6m

7.06 Type 37 3 Bed	1,335.8 sqft	124.1 sqm
Apartment Area	1,201.3 sqft	111.6 sqm
External Area	134.6 sqft	12.5 sqm
Kitchen / Living Area	24'11" x 21'4"	7.6m x 6.5m
Master Bedroom	9'10" x 9'2"	3.0m x 2.8m
Bedroom 2	13'1" x 10'2"	4.0m x 3.1m
Bedroom 3	11'10" x 9'6"	3.6m x 2.9m
Balcony 1	11'2" x 4'7"	3.4m x 1.4m
Balcony 2	10'2" x 8'2"	3.1m x 2.5m

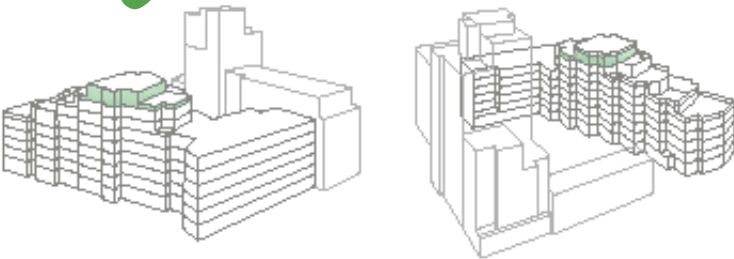


Floorplans shown for Willowbrook House are for approximate measurements only. Exact layouts and sizes may vary. All measurements may vary within a tolerance of 5%. The dimensions are not intended to be used for carpet sizes, appliance sizes or items of furniture.



West Reservoir

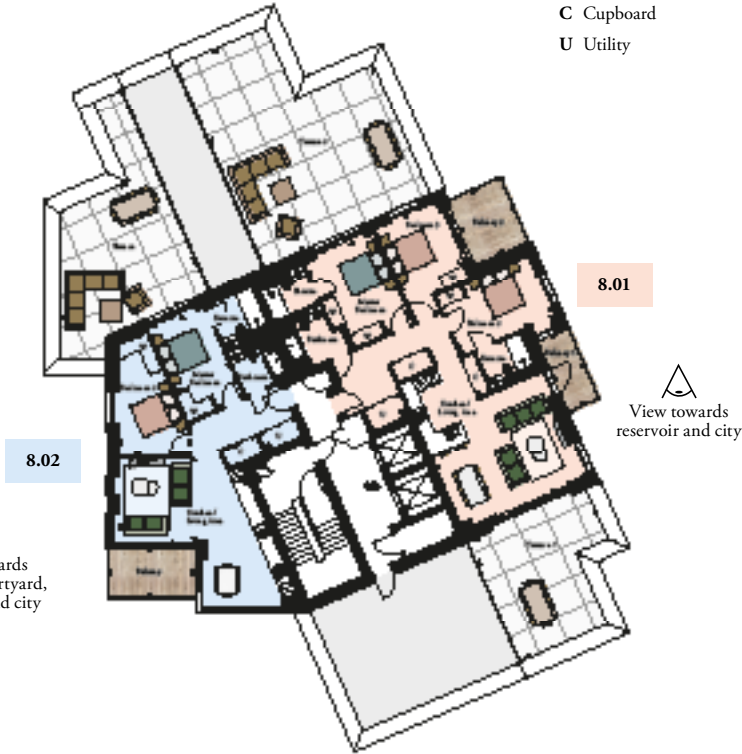
Eighth floor



- KEY**
- One bed
 - Two bed
 - Three bed
 - Provision for wardrobe
 - High units
 - Wardrobe
 - Cupboard
 - Utility

8.02 Type 32 2 Bed	1,416.5 sqft	131.6 sqm
Apartment Area	880.5 sqft	81.8 sqm
External Area	536 sqft	49.8 sqm
Kitchen / Living Area	22'4" x 12'2"	6.8m x 3.7m
Master Bedroom	14'5" x 8'10"	4.4m x 2.7m
Bedroom 2	17'5" x 10'2"	5.3m x 3.1m
Balcony	12'6" x 7'3"	3.8m x 2.2m
Terrace	21'0" x 19'8"	6.4m x 6.0m

8.01 Type 39 3 Bed	2,397.1 sqft	222.7 sqm
Apartment Area	1,211 sqft	112.5 sqm
External Area	1,186.2 sqft	110.2 sqm
Kitchen / Living Area	23'11" x 19'4"	7.3m x 5.9m
Master Bedroom	14'5" x 11'2"	4.4m x 3.4m
Bedroom 2	14'9" x 9'6"	4.5m x 2.9m
Bedroom 3	12'6" x 9'10"	3.8m x 3.0m
Balcony 1	11'2" x 4'11"	3.4m x 1.5m
Balcony 2	8'6" x 10'2"	2.6m x 3.1m
Terrace 1	19'8" x 18'8"	6.0m x 5.7m
Terrace 2	32'6" x 26'7"	9.9m x 8.1m



West Reservoir

Floor plans

One bedroom apartment type 1

Floors:

G | 1 | 2 | 3 | 4 | 5 | 6 | 7 | 8

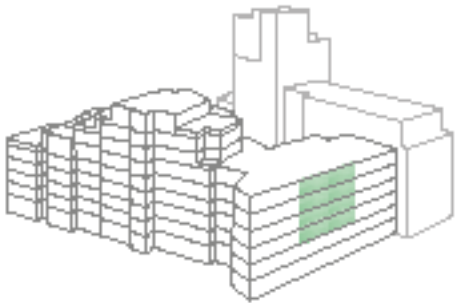
Plots: 2.08, 2.19, 3.08, 3.19, 4.08, 4.19, 5.08, 5.19



Apartment Area	560.8 sqft	52.1 sqm
External Area	53.8 sqft	5 sqm
Kitchen / Living Area	22'11" x 14'5"	7.0m x 4.4m
Bedroom	15'8" x 9'10"	4.8m x 3.0m
Balcony	10'9" x 4'11"	3.3m x 1.5m
Total	614.6 sqft	57.1 sqm

*Window position may vary

Floorplans shown for Willowbrook House are for approximate measurements only. Exact layouts and sizes may vary. All measurements may vary within a tolerance of 5%. The dimensions are not intended to be used for carpet sizes, appliance sizes or items of furniture.



Springpark Drive

West Reservoir

W Provision for wardrobe | H High units | W Wardrobe | C Cupboard | U Utility

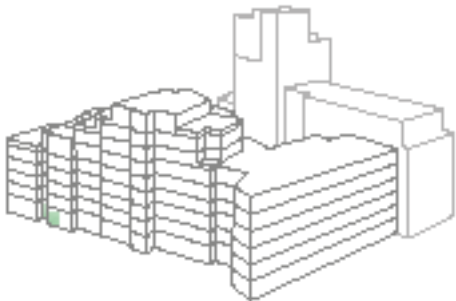
One bedroom apartment type 2

Floors:
G | 1 | 2 | 3 | 4 | 5 | 6 | 7 | 8
Plot: G.10



View towards landscaped walkway

Apartment Area	572.6 sqft	53.3 sqm
External Area	308.9 sqft	28.7 sqm
Kitchen / Living Area	23'11" x 11'1"	7.3m x 3.4m
Bedroom	20'11" x 10'2"	6.4m x 3.1m
Terrace	25'3" x 14'9"	7.7m x 4.5m
Total	881.6 sqft	81.9 sqm



Springpark Drive



West Reservoir

Floorplans shown for Willowbrook House are for approximate measurements only. Exact layouts and sizes may vary. All measurements may vary within a tolerance of 5%. The dimensions are not intended to be used for carpet sizes, appliance sizes or items of furniture.

One bedroom apartment type 2

Floors:
G | 1 | 2 | 3 | 4 | 5 | 6 | 7 | 8
Plots: 1.16, 2.16, 3.16, 4.16



View towards landscaped walkway

Apartment Area	572.6 sqft	53.3 sqm
External Area	57 sqft	5.3 sqm
Kitchen / Living Area	23'11" x 11'1"	7.3m x 3.4m
Bedroom	20'11" x 10'2"	6.4m x 3.1m
Balcony	11'6" x 4'11"	3.5m x 1.5m
Total	629.7 sqft	58.5 sqm



Springpark Drive



West Reservoir

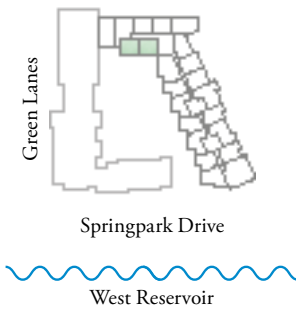
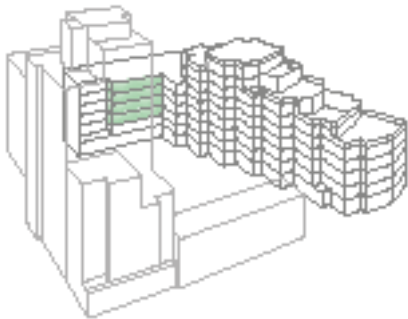
Provision for wardrobe | High units | Wardrobe | Cupboard | Utility

One bedroom apartment type 3

Floors:
G | 1 | 2 | 3 | 4 | 5 | 6 | 7 | 8
Plots: 2.20, 2.21, 3.20, 3.21, 4.20, 4.21, 5.20, 5.21



Apartment Area	538.2 sqft	50 sqm
External Area	53.8 sqft	5 sqm
Kitchen / Living Area	22'4" x 13'5"	6.8m x 4.1m
Bedroom	14'5" x 10'6"	4.4m x 3.2m
Balcony	10'9" x 4'11"	3.3m x 1.5m
Total	592 sqft	55 sqm



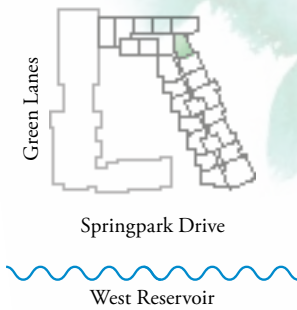
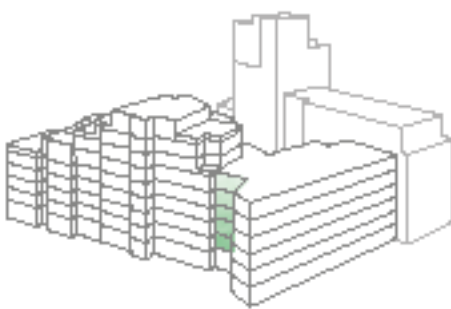
*Window position may vary
Floorplans shown for Willowbrook House are for approximate measurements only. Exact layouts and sizes may vary. All measurements may vary within a tolerance of 5%. The dimensions are not intended to be used for carpet sizes, appliance sizes or items of furniture.

One bedroom apartment type 4

Floors:
G | 1 | 2 | 3 | 4 | 5 | 6 | 7 | 8
Plots: 1.10, 2.10, 3.10, 4.10, 5.10



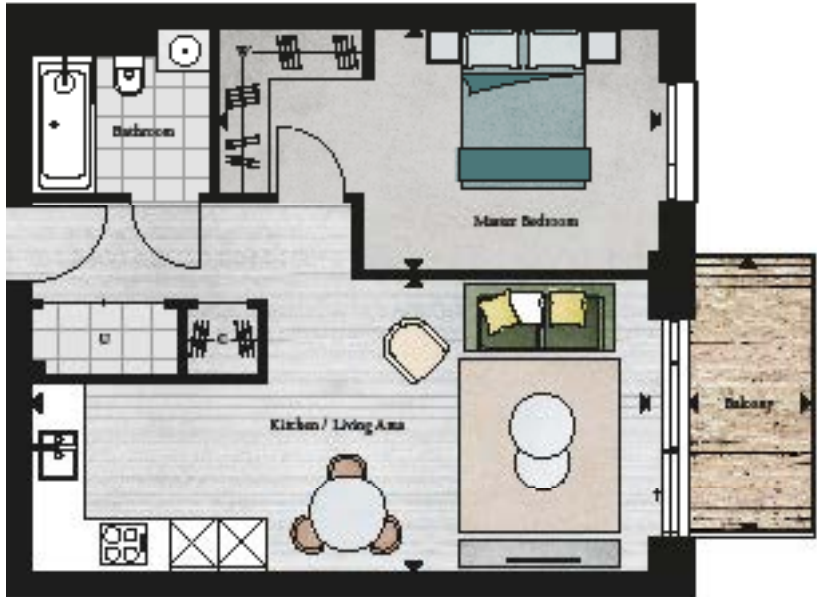
Apartment Area	558.7 sqft	51.9 sqm
External Area	54.9 sqft	5.1 sqm
Kitchen / Living Area	19'8" x 13'1"	6.0m x 4.0m
Bedroom	13'1" x 10'6"	4.0m x 3.2m
Balcony	11'2" x 4'11"	3.4m x 1.5m
Total	613.5 sqft	57 sqm



W Provision for wardrobe | H High units | W Wardrobe | C Cupboard | U Utility

One bedroom apartment type 5

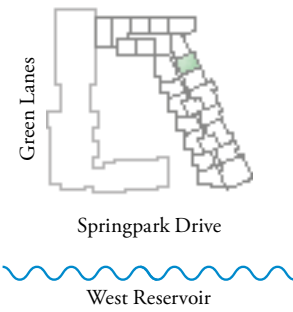
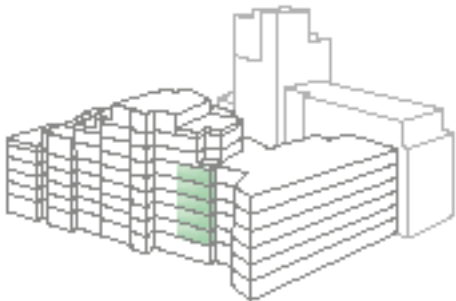
Floors:
G | 1 | 2 | 3 | 4 | 5 | 6 | 7 | 8
Plots: 1.11, 2.11, 3.11, 4.11, 5.11



View towards
Spring Park



Apartment Area	553.3 sqft	51.4 sqm
External Area	54.9 sqft	5.1 sqm
Kitchen / Living Area	24'11" x 11'10"	7.6m x 3.6m
Bedroom	17'9" x 9'10"	5.4m x 3.0m
Balcony	11'2" x 4'11"	3.4m x 1.5m
Total	608.2 sqft	56.5 sqm



Floorplans shown for Willowbrook House are for approximate measurements only. Exact layouts and sizes may vary. All measurements may vary within a tolerance of 5%. The dimensions are not intended to be used for carpet sizes, appliance sizes or items of furniture.

One bedroom apartment type 6

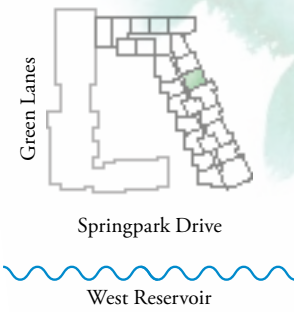
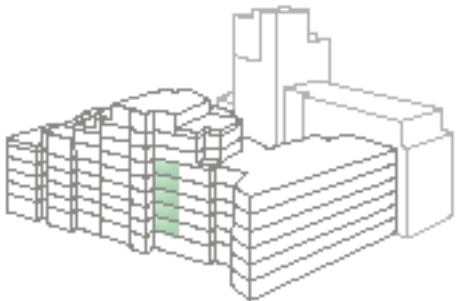
Floors:
G | 1 | 2 | 3 | 4 | 5 | 6 | 7 | 8
Plots: 1.12, 2.12, 3.12, 4.12, 5.12



View towards
Spring Park



Apartment Area	570.5 sqft	53 sqm
External Area	84 sqft	7.8 sqm
Kitchen / Living Area	24'11" x 12'5"	7.6m x 3.8m
Bedroom	17'5" x 9'10"	5.3m x 3.0m
Balcony	10'2" x 8'2"	3.1m x 2.5m
Total	654.5 sqft	60.8 sqm



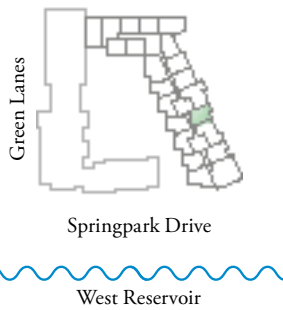
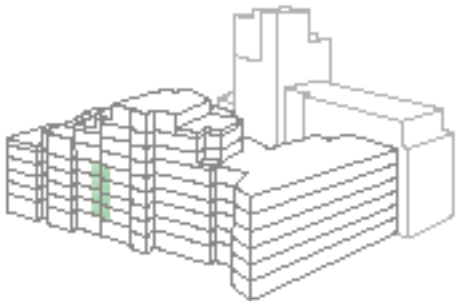
W Provision for wardrobe | H High units | W Wardrobe | C Cupboard | U Utility

One bedroom apartment type 7

Floors:
G | 1 | 2 | 3 | 4 | 5 | 6 | 7 | 8
Plots: 1.14, 2.14, 3.14, 4.14



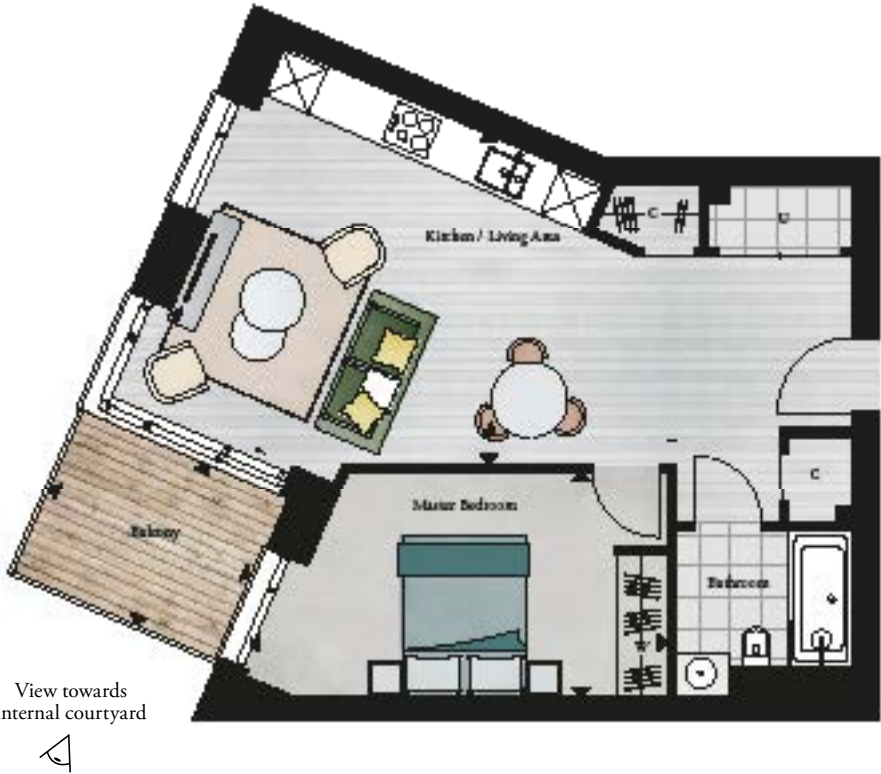
Apartment Area	538.2 sqft	50 sqm
External Area	54.9 sqft	5.1 sqm
Kitchen / Living Area	23'4" x 10'10"	7.1m x 3.3m
Bedroom	21'8" x 9'2"	6.6m x 2.8m
Balcony	11'2" x 4'11"	3.4m x 1.5m
Total	593.1 sqft	55.1 sqm



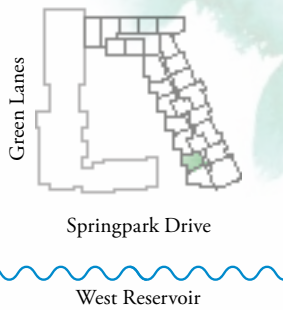
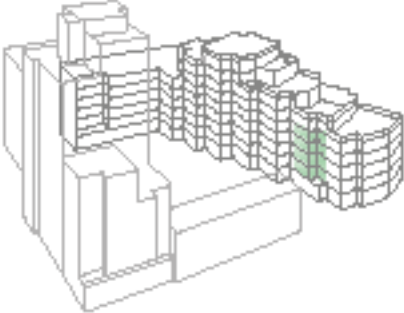
Floorplans shown for Willowbrook House are for approximate measurements only. Exact layouts and sizes may vary. All measurements may vary within a tolerance of 5%. The dimensions are not intended to be used for carpet sizes, appliance sizes or items of furniture.

One bedroom apartment type 8

Floors:
G | 1 | 2 | 3 | 4 | 5 | 6 | 7 | 8
Plots: 1.02, 2.02, 3.02, 4.02



Apartment Area	567.3 sqft	52.7 sqm
External Area	63.5 sqft	5.9 sqm
Kitchen / Living Area	14'1" x 12'8"	4.3m x 3.9m
Bedroom	16'9" x 9'10"	5.1m x 3.0m
Balcony	8'10" x 7'3"	2.7m x 2.2m
Total	630.8 sqft	58.6 sqm



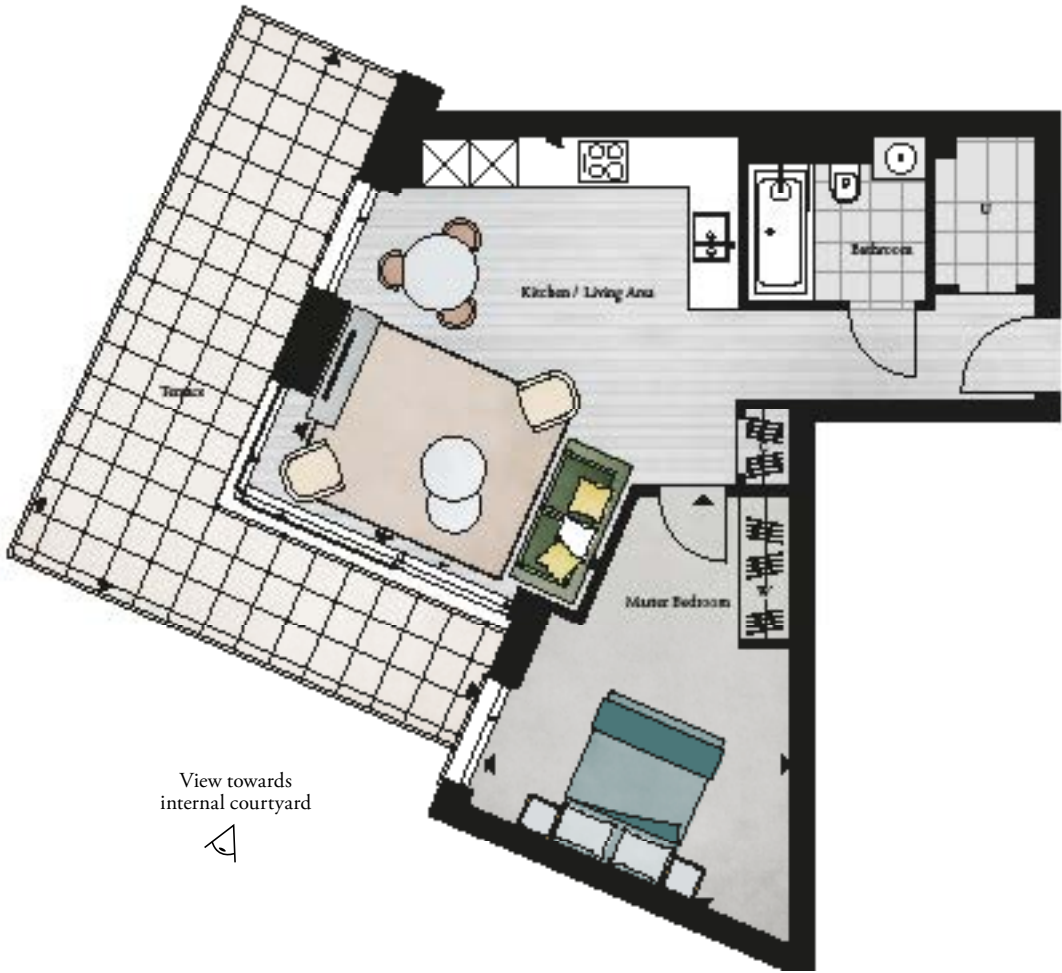
W Provision for wardrobe | H High units | W Wardrobe | C Cupboard | U Utility

One bedroom apartment type 9

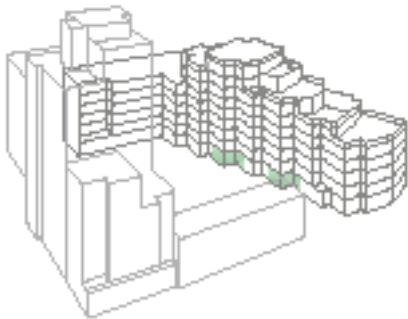
Floors:

G | 1 | 2 | 3 | 4 | 5 | 6 | 7 | 8

Plots: G.02, G.04



Apartment Area	565.1 sqft	52.5 sqm
External Area (plot G.02)	258.3 sqft	24 sqm
External Area (plot G.04)	419.8 sqft	39 sqm
Kitchen / Living Area	17'8" x 12'2"	5.4m x 3.7m
Bedroom	16'9" x 12'2"	5.1m x 3.7m
Terrace (plot G.02)	24'11" x 19'4"	7.6m x 5.9m
Terrace (plot G.04)	27'11" x 22'11"	8.5m x 7.0m
Total (plot G.02)	823.4 sqft	76.5 sqm
Total (plot G.04)	984.9 sqft	91.5 sqm



Springpark Drive

West Reservoir

Floorplans shown for Willowbrook House are for approximate measurements only. Exact layouts and sizes may vary. All measurements may vary within a tolerance of 5%. The dimensions are not intended to be used for carpet sizes, appliance sizes or items of furniture.

One bedroom apartment type 9

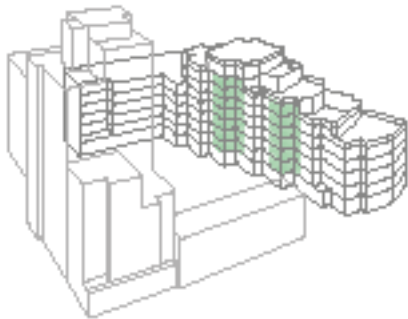
Floors:

G | 1 | 2 | 3 | 4 | 5 | 6 | 7 | 8

Plots: 1.03, 1.05, 2.03, 2.05, 3.03, 3.05, 4.03, 4.05, 5.03, 5.05 6.03, 6.05, 7.05



Apartment Area	565.1 sqft	52.5 sqm
External Area	88.3 sqft	8.2 sqm
Kitchen / Living Area	17'8" x 12'2"	5.4m x 3.7m
Bedroom	16'9" x 12'2"	5.1m x 3.7m
Balcony	12'8" x 6'9"	3.9m x 2.1m
Total	653.4 sqft	60.7 sqm



Springpark Drive

West Reservoir

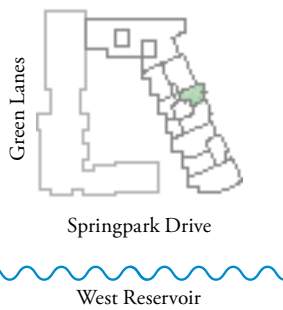
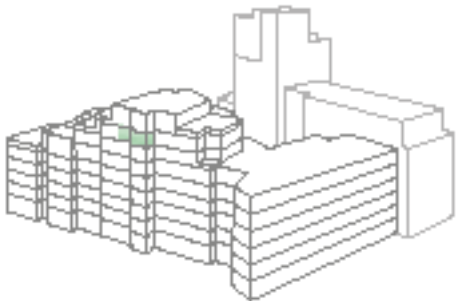
Provision for wardrobe | High units | W Wardrobe | C Cupboard | U Utility

One bedroom apartment type 10

Floors:
G | 1 | 2 | 3 | 4 | 5 | 6 | 7 | 8
Plot: 7.02



Apartment Area	612.5 sqft	57 sqm
External Area	54.9 sqft	5.1 sqm
Kitchen / Living Area	19'4" x 12'1"	5.9m x 3.7m
Bedroom	23'11" x 10'6"	7.3m x 3.2m
Balcony	11'2" x 4'11"	3.4m x 1.5m
Total	667.4 sqft	62 sqm



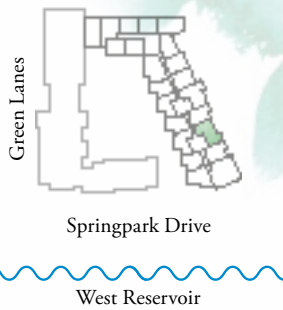
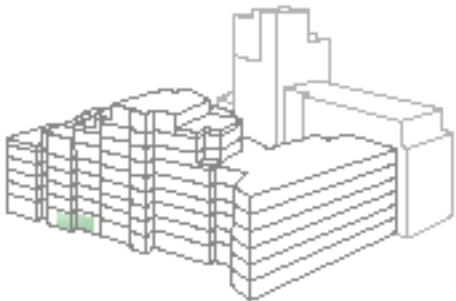
Floorplans shown for Willowbrook House are for approximate measurements only. Exact layouts and sizes may vary. All measurements may vary within a tolerance of 5%. The dimensions are not intended to be used for carpet sizes, appliance sizes or items of furniture.

One bedroom apartment type 12

Floors:
G | 1 | 2 | 3 | 4 | 5 | 6 | 7 | 8
Plot: G.09



Apartment Area	650.1 sqft	60.4 sqm
External Area	402.6 sqft	37.4 sqm
Kitchen / Living Area	19'4" x 13'1"	5.9m x 4.0m
Master Bedroom	13'1" x 9'2"	4.0m x 2.8m
Study	10'6" x 10'2"	3.2m x 3.1m
Terrace	30'6" x 15'1"	9.3m x 4.6m
Total	1,052.7 sqft	97.8 sqm



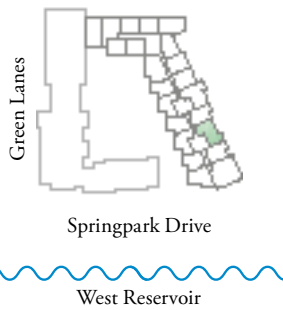
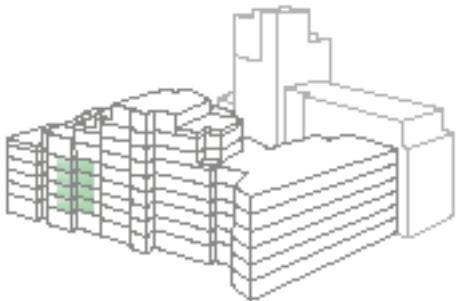
W Provision for wardrobe | H High units | W Wardrobe | C Cupboard | U Utility

One bedroom apartment type 12

Floors:
G | 1 | 2 | 3 | 4 | 5 | 6 | 7 | 8
Plots: 1.15, 2.15 3.15, 4.15



Apartment Area	650.1 sqft	60.4 sqm
External Area	53.8 sqft	5 sqm
Kitchen / Living Area	19'7" x 12'8"	6.0m x 3.9m
Master Bedroom	13'1" x 9'2"	4.0m x 2.8m
Study	10'6" x 10'2"	3.2m x 3.1m
Balcony	10'8" x 4'11"	3.3m x 1.5m
Total	704 sqft	65.4 sqm



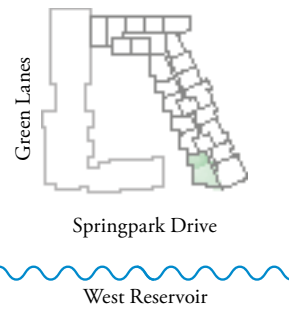
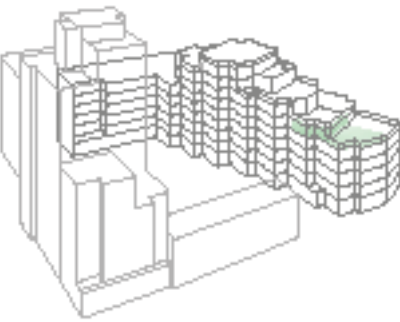
Floorplans shown for Willowbrook House are for approximate measurements only. Exact layouts and sizes may vary. All measurements may vary within a tolerance of 5%. The dimensions are not intended to be used for carpet sizes, appliance sizes or items of furniture.

One bedroom apartment type 13

Floors:
G | 1 | 2 | 3 | 4 | 5 | 6 | 7 | 8
Plot: 5.02



Apartment Area	603.9 sqft	56.1 sqm
External Area	671.7 sqft	62.4 sqm
Kitchen / Living Area	22'8" x 19'0"	6.9m x 5.8m
Bedroom	15'9" x 8'10"	4.8m x 2.7m
Balcony	8'10" x 6'9"	2.7m x 2.1m
Terrace	30'2" x 29'10"	9.2m x 9.1m
Total	1,275.6 sqft	118.5 sqm



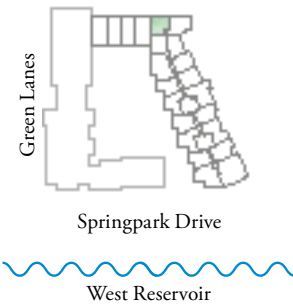
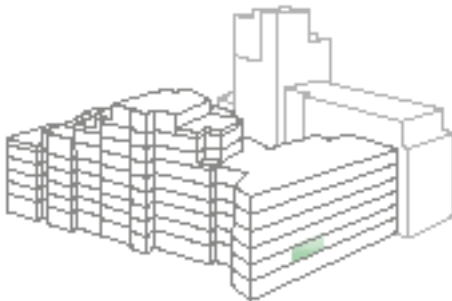
Provision for wardrobe | High units | W Wardrobe | C Cupboard | U Utility

One bedroom apartment type 14

Floors:
G | 1 | 2 | 3 | 4 | 5 | 6 | 7 | 8
Plot: 1.08



Apartment Area	543.6 sqft	50.5 sqm
External Area	53.8 sqft	5 sqm
Kitchen / Living Area	16'5" x 15'5"	5.0m x 4.7m
Bedroom	17'4" x 9'5"	5.3m x 2.9m
Balcony	10'8" x 4'11"	3.3m x 1.5m
Total	597.4 sqft	55.5 sqm



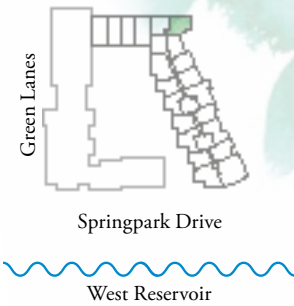
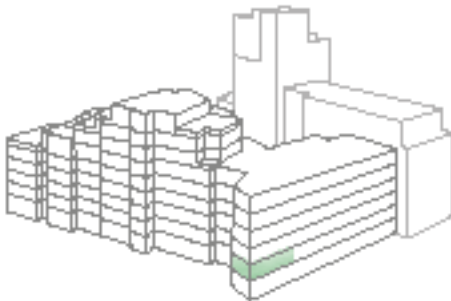
Floorplans shown for Willowbrook House are for approximate measurements only. Exact layouts and sizes may vary. All measurements may vary within a tolerance of 5%. The dimensions are not intended to be used for carpet sizes, appliance sizes or items of furniture.

One bedroom apartment type 15

Floors:
G | 1 | 2 | 3 | 4 | 5 | 6 | 7 | 8
Plot: 1.09



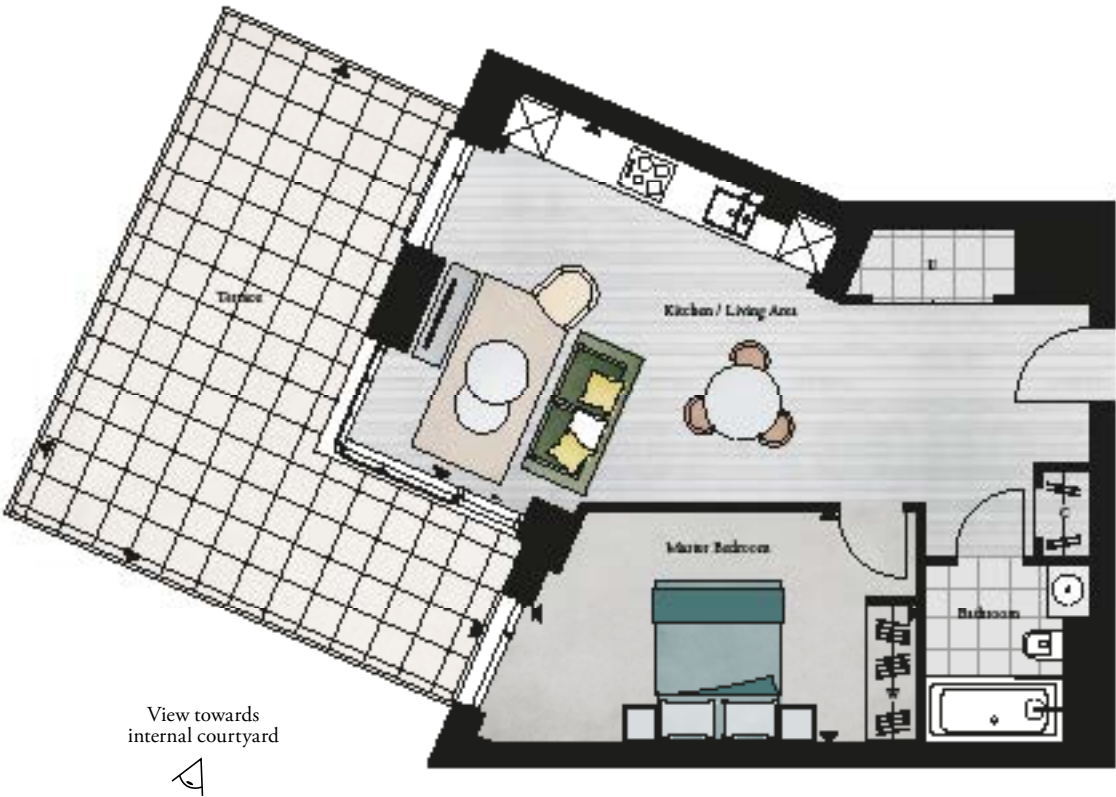
Apartment Area	645.8 sqft	60.1 sqm
External Area	79.7 sqft	7.4 sqm
Kitchen / Living Area	20'3" x 16'1"	6.2m x 4.9m
Bedroom	13'9" x 10'6"	4.2m x 3.2m
Balcony	16'5" x 4'11"	5.0m x 1.5m
Total	725.5 sqft	67.4 sqm



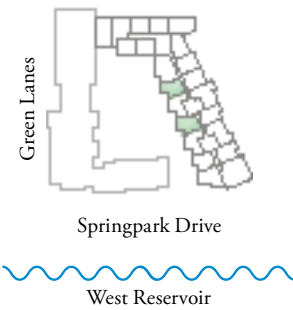
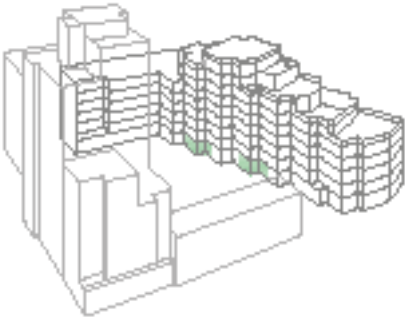
Provision for wardrobe | High units | W Wardrobe | C Cupboard | U Utility

One bedroom apartment type 43

Floors:
G | 1 | 2 | 3 | 4 | 5 | 6 | 7 | 8
Plots: G.03, G.05



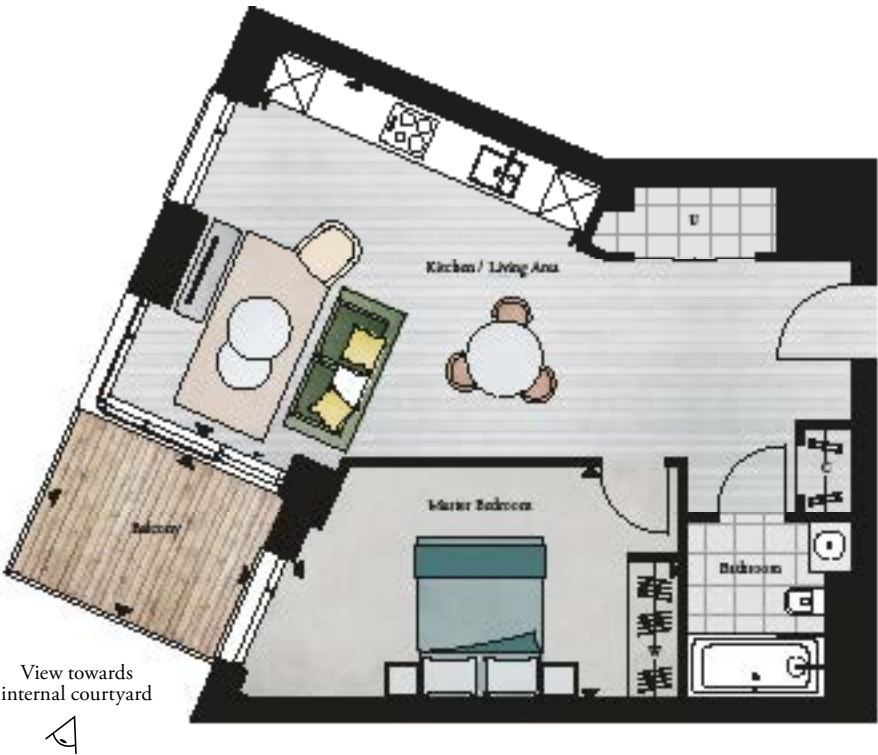
Apartment Area	559.7 sqft	52 sqm
External Area (plot G.03)	278.8 sqft	25.9 sqm
External Area (plot G.05)	322.9 sqft	30 sqm
Kitchen / Living Area	15'9" x 14'1"	4.8m x 4.3m
Bedroom	15'5" x 9'10"	4.7m x 3.0m
Terrace (plot G.03)	19'4" x 19'0"	5.9m x 5.8m
Terrace (plot G.05)	25'7" x 19'0"	7.8m x 5.8m
Total (plot G.03)	838.5 sqft	77.9 sqm
Total (plot G.05)	882.6 sqft	82 sqm



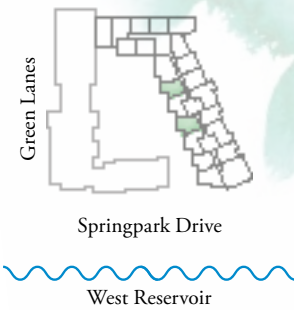
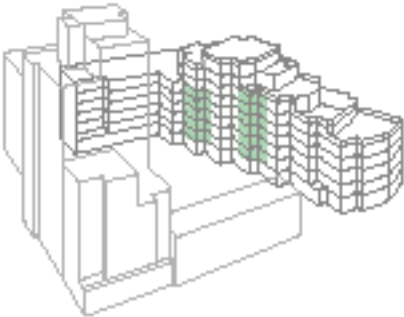
Floorplans shown for Willowbrook House are for approximate measurements only. Exact layouts and sizes may vary. All measurements may vary within a tolerance of 5%. The dimensions are not intended to be used for carpet sizes, appliance sizes or items of furniture.

One bedroom apartment type 43

Floors:
G | 1 | 2 | 3 | 4 | 5 | 6 | 7 | 8
Plots: 1.04, 1.06, 2.04, 2.06, 3.04, 3.06, 4.04, 4.06, 5.04, 5.06, 6.04



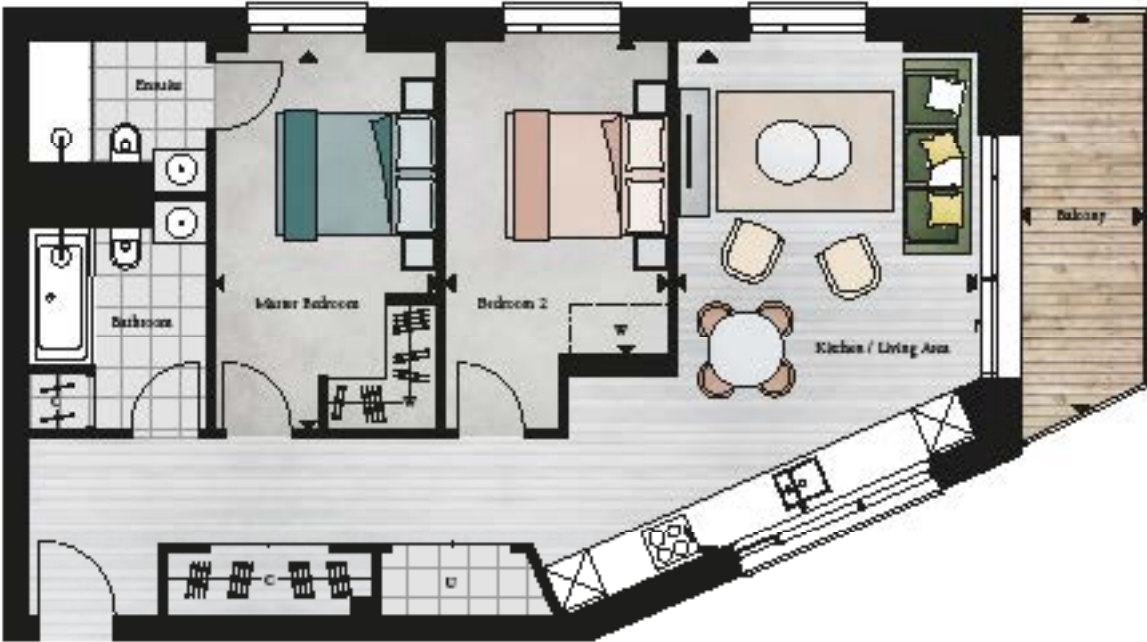
Apartment Area	559.7 sqft	52 sqm
External Area	61.4 sqft	5.7 sqm
Kitchen / Living Area	15'9" x 14'1"	4.8m x 4.3m
Bedroom	15'5" x 9'10"	4.7m x 3.0m
Balcony	8'8" x 6'9"	2.7m x 2.1m
Total	621.1 sqft	57.7 sqm



Provision for wardrobe | High units | W Wardrobe | C Cupboard | U Utility

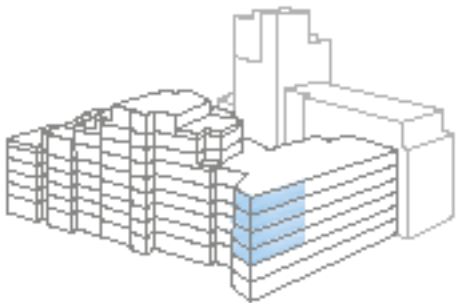
Two bedroom apartment type 23

Floors:
G | 1 | 2 | 3 | 4 | 5 | 6 | 7 | 8
Plots: 2.09, 3.09, 4.09, 5.09



v towards
ing Park

Apartment Area	823.4 sqft	76.5 sqm
External Area	79.7 sqft	7.4 sqm
Kitchen / Living Area	21'4" x 12'2"	6.5m x 3.7m
Master Bedroom	15'5" x 8'10"	4.7m x 2.7m
Bedroom 2	12'5" x 9'2"	3.8m x 2.8m
Balcony	16'5" x 4'11"	5.0m x 1.5m
Total	903.1 sqft	83.9 sqm



Springpark Drive

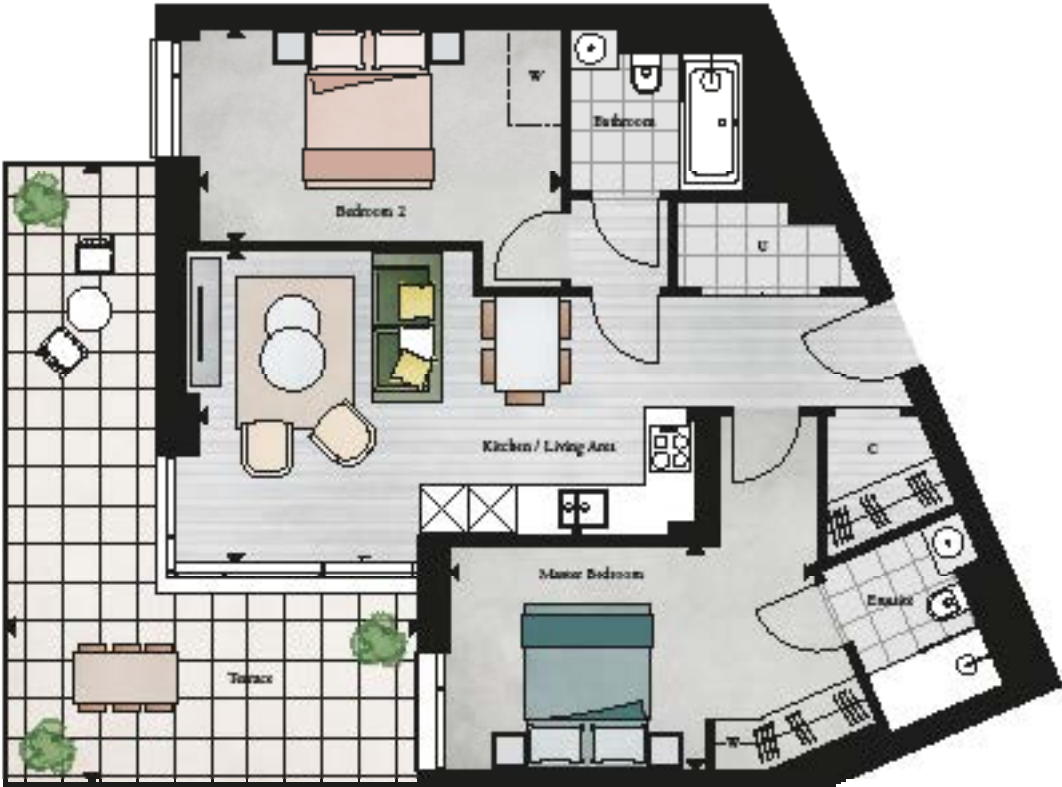


West Reservoir

Floorplans shown for Willowbrook House are for approximate measurements only. Exact layouts and sizes may vary. All measurements may vary within a tolerance of 5%. The dimensions are not intended to be used for carpet sizes, appliance sizes or items of furniture.

Two bedroom apartment type 24

Floors:
G | 1 | 2 | 3 | 4 | 5 | 6 | 7 | 8
Plot: G.06



view towards
internal courtyard

Apartment Area	743.8 sqft	69.1 sqm
External Area	247.6 sqft	23 sqm
Kitchen / Living Area	20'0" x 12'10"	6.1m x 3.9m
Master Bedroom	14'9" x 9'2"	4.5m x 2.8m
Bedroom 2	14'1" x 8'6"	4.3m x 2.6m
Terrace	23'4" x 18'1"	7.1m x 5.5m
Total	991.4 sqft	92.1 sqm



Springpark Drive



West Reservoir

W Provision for wardrobe | H High units | W Wardrobe | C Cupboard | U Utility

Two bedroom apartment type 25

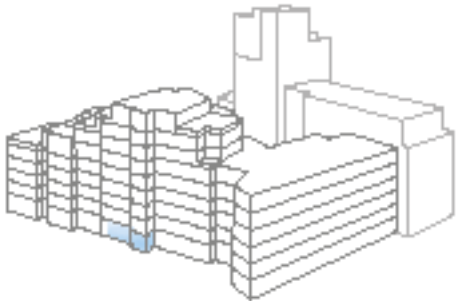
Floors:

G | 1 | 2 | 3 | 4 | 5 | 6 | 7 | 8

Plot: G.08



Apartment Area	806.2 sqft	74.9 sqm
External Area	272.3 sqft	25.3 sqm
Kitchen / Living Area	19'8" x 12'6"	6.0m x 3.8m
Master Bedroom	16'1" x 10'10"	4.9m x 3.3m
Bedroom 2	13'5" x 9'2"	4.1m x 2.8m
Terrace	34'5" x 7'2"	10.5m x 2.2m
Total	1,078.6 sqft	100.2 sqm



Springpark Drive



West Reservoir

Floorplans shown for Willowbrook House are for approximate measurements only. Exact layouts and sizes may vary. All measurements may vary within a tolerance of 5%. The dimensions are not intended to be used for carpet sizes, appliance sizes or items of furniture.

Two bedroom apartment type 25

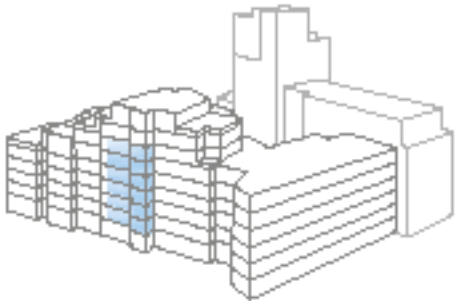
Floors:

G | 1 | 2 | 3 | 4 | 5 | 6 | 7 | 8

Plots: 1.13, 2.13, 3.13, 4.13, 5.13, 6.02



Apartment Area	806.2 sqft	74.9 sqm
External Area	103.3 sqft	9.6 sqm
Kitchen / Living Area	19'8" x 12'6"	6.0m x 3.8m
Master Bedroom	16'1" x 10'10"	4.9m x 3.3m
Bedroom 2	13'5" x 9'2"	4.1m x 2.8m
Balcony	21'0" x 4'11"	6.4m x 1.5m
Total	909.6 sqft	84.5 sqm



Springpark Drive



West Reservoir

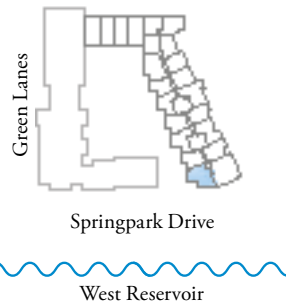
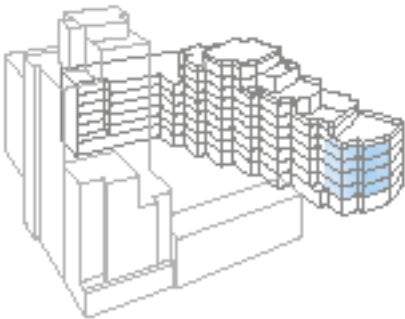
W Provision for wardrobe | H High units | W Wardrobe | C Cupboard | U Utility

Two bedroom apartment type 26

Floors:
G | 1 | 2 | 3 | 4 | 5 | 6 | 7 | 8
Plots: 1.01, 2.01, 3.01, 4.01



Apartment Area	803 sqft	74.5 sqm
External Area	84 sqft	7.8 sqm
Kitchen / Living Area	16'5" x 15'5"	5.0m x 4.7m
Master Bedroom	16'5" x 10'10"	5.0m x 3.3m
Bedroom 2	13'1" x 8'10"	4.0m x 2.7m
Balcony	16'1" x 5'3"	4.9m x 1.6m
Total	887 sqft	82.4 sqm



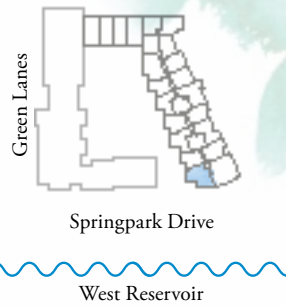
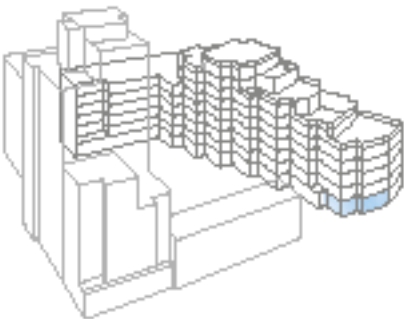
Floorplans shown for Willowbrook House are for approximate measurements only. Exact layouts and sizes may vary. All measurements may vary within a tolerance of 5%. The dimensions are not intended to be used for carpet sizes, appliance sizes or items of furniture.

Two bedroom apartment type 62

Floors:
G | 1 | 2 | 3 | 4 | 5 | 6 | 7 | 8
Plot: G.01



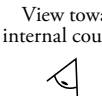
Apartment Area	794.4 sqft	73.8 sqm
External Area	139.9 sqft	13 sqm
Kitchen / Living Area	17'8" x 16'0"	5.4m x 4.9m
Master Bedroom	18'4" x 10'10"	5.6m x 3.3m
Bedroom 2	13'1" x 8'10"	4.0m x 2.7m
Terrace	15'1" x 9'11"	4.6m x 3.0m
Total	934.3 sqft	86.8 sqm



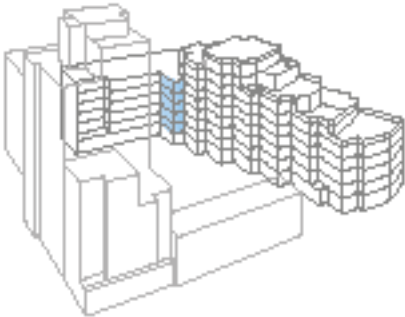
Provision for wardrobe | High units | Wardrobe | Cupboard | Utility

Two bedroom apartment type 27

Floors:
G | 1 | 2 | 3 | 4 | 5 | 6 | 7 | 8
Plots: 1.07, 2.07, 3.07, 4.07, 5.07



Apartment Area	878.3 sqft	81.6 sqm
External Area	79.7 sqft	7.4 sqm
Kitchen / Living Area	20'0" x 15'1"	6.1m x 4.6m
Master Bedroom	14'1" x 9'2"	4.3m x 2.8m
Bedroom 2	12'6" x 11'2"	3.8m x 3.4m
Balcony	10'6" x 7'7"	3.2m x 2.3m
Total	958 sqft	89 sqm

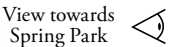


Springpark Drive
West Reservoir

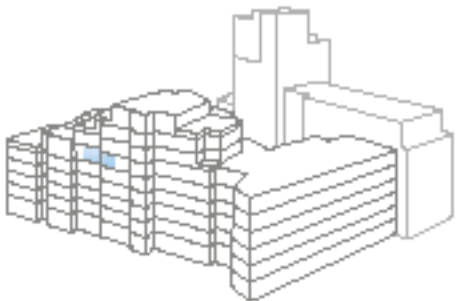
Floorplans shown for Willowbrook House are for approximate measurements only. Exact layouts and sizes may vary. All measurements may vary within a tolerance of 5%. The dimensions are not intended to be used for carpet sizes, appliance sizes or items of furniture.

Two bedroom apartment type 28

Floors:
G | 1 | 2 | 3 | 4 | 5 | 6 | 7 | 8
Plot: 5.14



Apartment Area	803 sqft	74.6 sqm
External Area	54.9 sqft	5.1 sqm
Kitchen / Living Area	29'2" x 10'10"	8.9m x 3.3m
Master Bedroom	11'2" x 10'6"	3.4m x 3.2m
Bedroom 2	13'1" x 9'2"	4.0m x 2.8m
Balcony	11'2" x 4'11"	3.4m x 1.5m
Total	857.9 sqft	79.7 sqm



Springpark Drive
West Reservoir

W Provision for wardrobe | H High units | W Wardrobe | C Cupboard | U Utility

Two bedroom apartment type 29

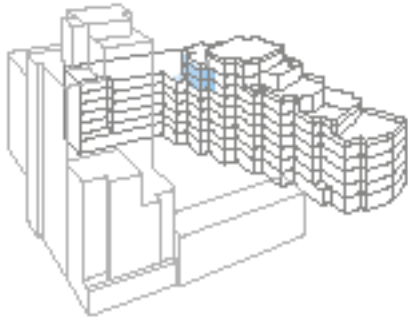
Floors:
G | 1 | 2 | 3 | 4 | 5 | 6 | 7 | 8
Plots: 6.07, 7.07

View towards
internal courtyard

Apartment Area	918.2 sqft	85.3 sqm
External Area (sixth floor)	219.6 sqft	20.4 sqm
External Area (seventh floor)	61.4 sqft	5.7 sqm
Dining / Kitchen	22'0" x 11'10"	6.7m x 3.6m
Living Area	14'1" x 10'2"	4.3m x 3.1m
Master Bedroom	12'1" x 9'2"	3.7m x 2.8m
Bedroom 2	12'10" x 9'11"	3.9m x 3.0m
Balcony	8'10" x 6'11"	2.7m x 2.1m
Terrace*	15'1" x 6'7"	4.6m x 2.0m
Total (sixth floor)	1,137.8 sqft	105.7 sqm
Total (seventh floor)	974.5 sqft	91 sqm

*Terrace on sixth floor only

Floorplans shown for Willowbrook House are for approximate measurements only. Exact layouts and sizes may vary. All measurements may vary within a tolerance of 5%. The dimensions are not intended to be used for carpet sizes, appliance sizes or items of furniture.



Green Lanes



Springpark Drive

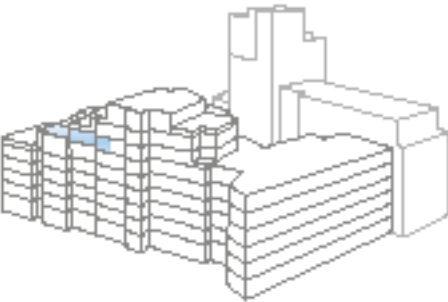
West Reservoir



Two bedroom apartment type 31

Floors:
G | 1 | 2 | 3 | 4 | 5 | 6 | 7 | 8
Plot: 6.01

Apartment Area	977.4 sqft	90.8 sqm
External Area	600.6 sqft	55.8 sqm
Kitchen / Living Area	23'11" x 19'4"	7.3m x 5.9m
Master Bedroom	13'9" x 10'10"	4.2m x 3.3m
Bedroom 2	11'6" x 10'6"	3.5m x 3.2m
Balcony	11'2" x 4'11"	3.4m x 1.5m
Terrace	32'10" x 18'4"	10.0m x 5.6m
Total	1,578 sqft	146.6 sqm



Green Lanes



Springpark Drive

West Reservoir



View towards
Spring Park

View towards
sailing lake



W Provision for wardrobe | H High units | W Wardrobe | C Cupboard | U Utility

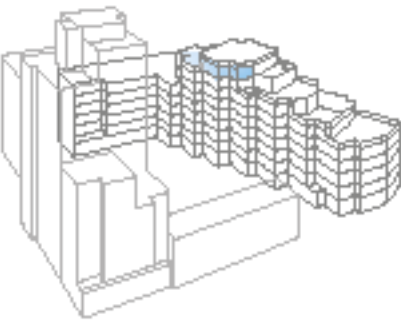
Two bedroom apartment type 32

Floors:

G | 1 | 2 | 3 | 4 | 5 | 6 | 7 | 8

Plot: 8.02

Apartment Area	880.5 sqft	81.8 sqm
External Area	536 sqft	49.8 sqm
Kitchen / Living Area	22'4" x 12'2"	6.8m x 3.7m
Master Bedroom	14'5" x 8'10"	4.4m x 2.7m
Bedroom 2	17'5" x 10'2"	5.3m x 3.1m
Balcony	12'6" x 7'3"	3.8m x 2.2m
Terrace	21'0" x 19'8"	6.4m x 6.0m
Total	1,416.5 sqft	131.6 sqm

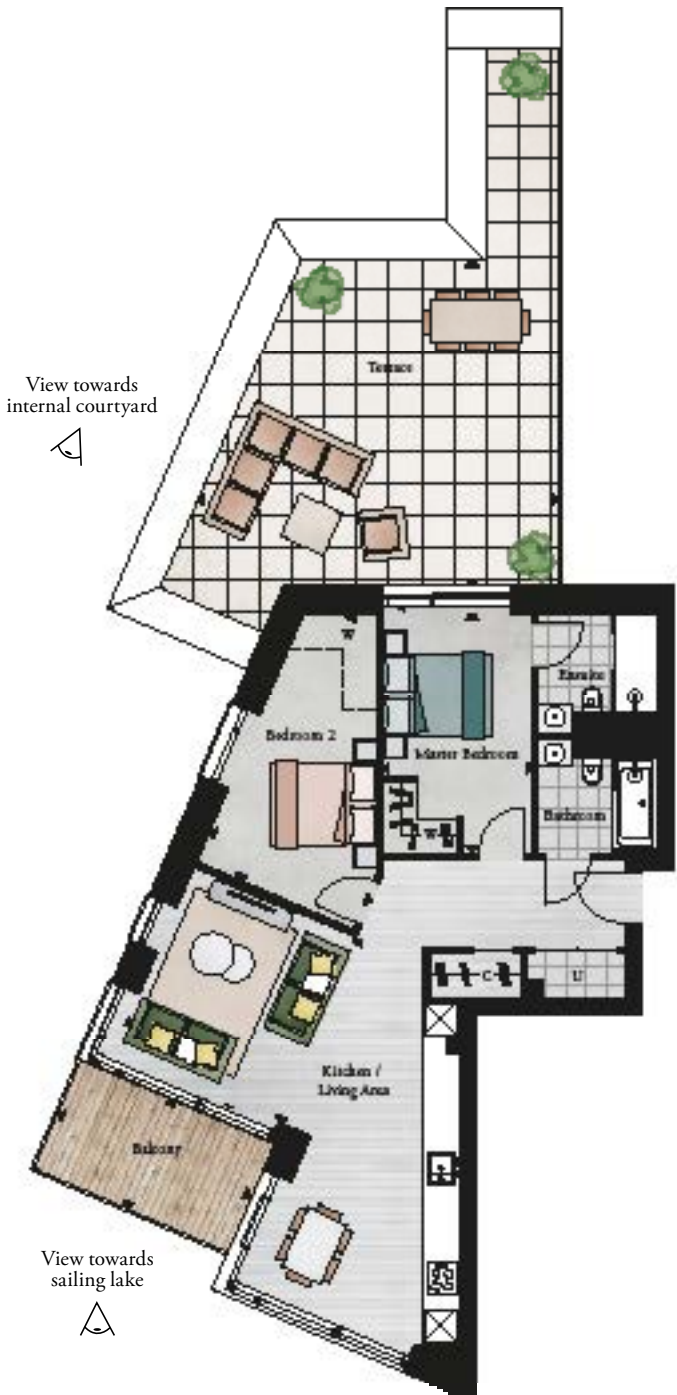


Springpark Drive



West Reservoir

Floorplans shown for Willowbrook House are for approximate measurements only. Exact layouts and sizes may vary. All measurements may vary within a tolerance of 5%. The dimensions are not intended to be used for carpet sizes, appliance sizes or items of furniture.



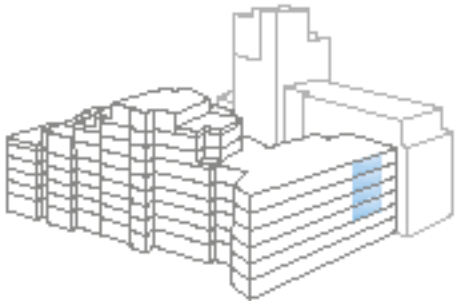
Two bedroom apartment type 34

Floors:

G | 1 | 2 | 3 | 4 | 5 | 6 | 7 | 8

Plots: 2.18, 3.18, 4.18, 5.18

Apartment Area	848.2 sqft	78.8 sqm
External Area	77.5 sqft	7.2 sqm
Kitchen / Living Area	20'4" x 15'5"	6.2m x 4.7m
Master Bedroom	11'10" x 11'2"	3.6m x 3.4m
Bedroom 2	15'1" x 9'2"	4.6m x 2.8m
Balcony	15'9" x 4'11"	4.8m x 1.5m
Total	925.7 sqft	86 sqm



Springpark Drive



West Reservoir

W Provision for wardrobe | H High units | W Wardrobe | C Cupboard | U Utility

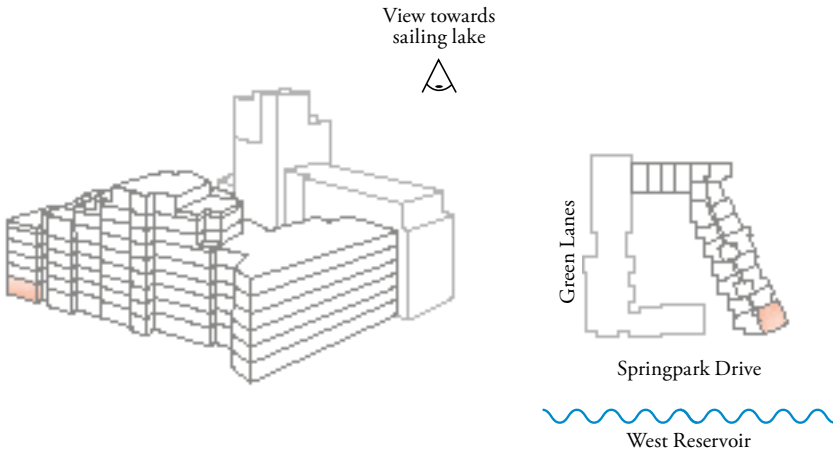


Three bedroom apartment type 35

Floors:
G | 1 | 2 | 3 | 4 | 5 | 6 | 7 | 8
Plot: G.11



Apartment Area	1,090.4 sqft	101.3 sqm
External Area	465 sqft	43.2 sqm
Kitchen / Living Area	24'6" x 10'10"	7.5m x 3.3m
Master Bedroom	16'1" x 11'2"	4.9m x 3.4m
Bedroom 2	10'6" x 9'2"	3.2m x 2.8m
Bedroom 3	13'11" x 9'2"	4.0m x 2.8m
Terrace	40'4" x 32'10"	12.3m x 10.0m
Total	1555.4 sqft	144.5 sqm



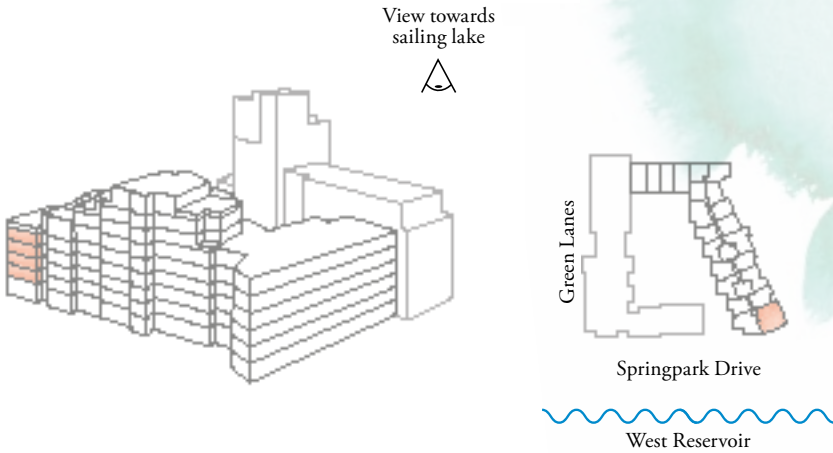
Floorplans shown for Willowbrook House are for approximate measurements only. Exact layouts and sizes may vary. All measurements may vary within a tolerance of 5%. The dimensions are not intended to be used for carpet sizes, appliance sizes or items of furniture.

Three bedroom apartment type 35

Floors:
G | 1 | 2 | 3 | 4 | 5 | 6 | 7 | 8
Plots: 1.17, 2.17, 3.17, 4.17



Apartment Area	1,090.4 sqft	101.3 sqm
External Area	77.5 sqft	7.2 sqm
Kitchen / Living Area	24'6" x 10'10"	7.5m x 3.3m
Master Bedroom	16'1" x 11'2"	4.9m x 3.4m
Bedroom 2	10'6" x 9'2"	3.2m x 2.8m
Bedroom 3	13'11" x 9'2"	4.0m x 2.8m
Balcony	15'9" x 4'11"	4.8m x 1.5m
Total	1167.9 sqft	108.5 sqm



W Provision for wardrobe | H High units | W Wardrobe | C Cupboard | U Utility

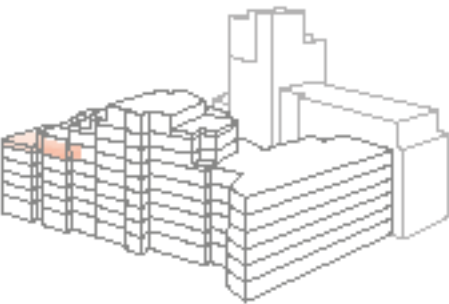
Three bedroom apartment type 36

Floors:

G | 1 | 2 | 3 | 4 | 5 | 6 | 7 | 8

Plot: 5.15

Apartment Area	1082.9 sqft	100.6 sqm
External Area	956.9 sqft	88.9 sqm
Kitchen / Living Area	29'2" x 12'6"	8.9m x 3.8m
Master Bedroom	11'1" x 9'10"	3.4m x 3.0m
Bedroom 2	14'9" x 8'10"	4.5m x 2.7m
Bedroom 3	15'9" x 9'2"	4.8m x 2.8m
Balcony	10'10" x 4'11"	3.3m x 1.5m
Terrace	33'2" x 27'7"	10.1m x 8.4m
Total	2,039.8 sqft	189.5 sqm



Springpark Drive



West Reservoir

Floorplans shown for Willowbrook House are for approximate measurements only. Exact layouts and sizes may vary. All measurements may vary within a tolerance of 5%. The dimensions are not intended to be used for carpet sizes, appliance sizes or items of furniture.



View towards Spring Park



View towards sailing lake



Three bedroom apartment type 37

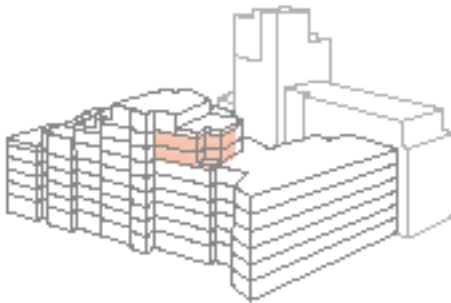
Floors:

G | 1 | 2 | 3 | 4 | 5 | 6 | 7 | 8

Plots: 6.06, 7.06

Apartment Area	1,201.3 sqft	111.6 sqm
External Area (sixth floor)	228.2 sqft	21.2 sqm
External Area (seventh floor)	134.6 sqft	12.5 sqm
Kitchen / Living Area	24'11" x 21'4"	7.6m x 6.5m
Master Bedroom	9'10" x 9'2"	3.0m x 2.8m
Bedroom 2	13'1" x 10'2"	4.0m x 3.1m
Bedroom 3	11'10" x 9'6"	3.6m x 2.9m
Balcony 1	11'2" x 4'7"	3.4m x 1.4m
Balcony 2	10'2" x 8'2"	3.1m x 2.5m
Terrace*	10'2" x 9'2"	3.1m x 2.8m
Total (sixth floor)	1,429.5 sqft	132.8 sqm
Total (seventh floor)	1,335.8 sqft	124.1 sqm

*Terrace on sixth floor only



Springpark Drive



West Reservoir

W Provision for wardrobe | H High units | W Wardrobe | C Cupboard | U Utility



View towards Spring Park

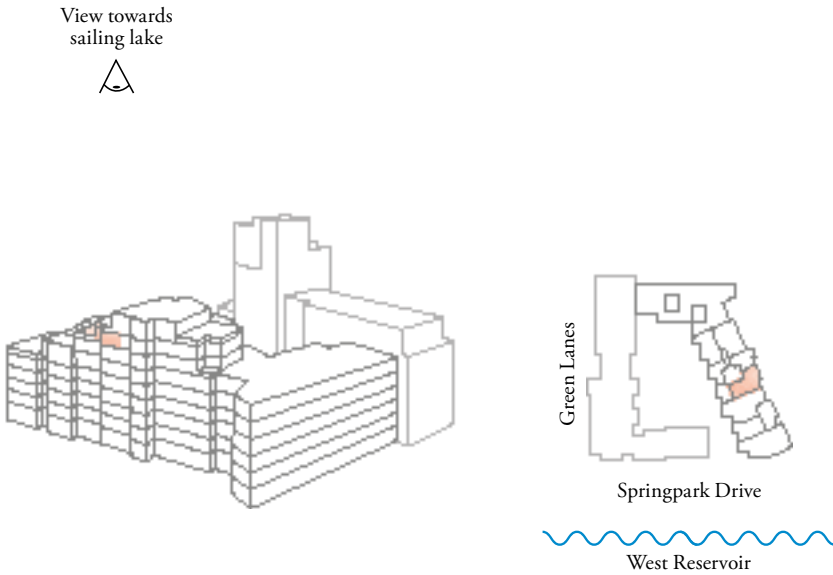


Three bedroom apartment type 38

Floors:
G | 1 | 2 | 3 | 4 | 5 | 6 | 7 | 8
Plot: 7.01



Apartment Area	1,082.9 sqft	100.6 sqm
External Area	1,212 sqft	112.6 sqm
Kitchen / Living Area	20'8" x 20'0"	6.3m x 6.1m
Master Bedroom	12'6" x 9'10"	3.8m x 3.0m
Bedroom 2	13'5" x 10'2"	4.1m x 3.1m
Bedroom 3	14'5" x 9'2"	4.4m x 2.8m
Balcony	11'2" x 4'11"	3.4m x 1.5m
Terrace	58'4" x 31'6"	17.8m x 9.6m
Total	2,294.9 sqft	213.2 sqm

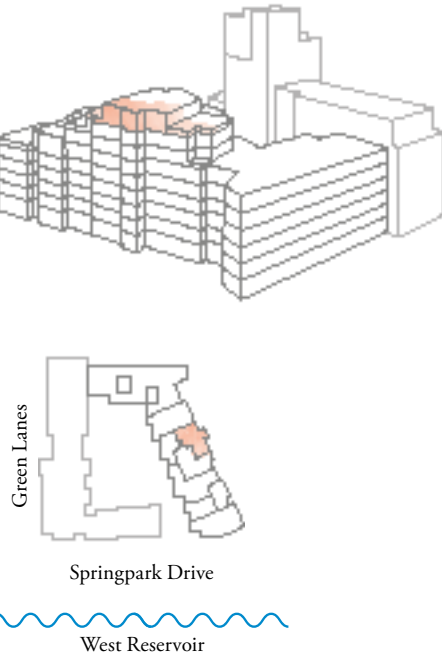


Floorplans shown for Willowbrook House are for approximate measurements only. Exact layouts and sizes may vary. All measurements may vary within a tolerance of 5%. The dimensions are not intended to be used for carpet sizes, appliance sizes or items of furniture.

Three bedroom apartment type 39

Floors:
G | 1 | 2 | 3 | 4 | 5 | 6 | 7 | 8
Plot: 8.01

Apartment Area	1,211 sqft	112.5 sqm
External Area	1,186.2 sqft	110.2 sqm
Kitchen / Living Area	23'11" x 19'4"	7.3m x 5.9m
Master Bedroom	14'5" x 11'2"	4.4m x 3.4m
Bedroom 2	14'9" x 9'6"	4.5m x 2.9m
Bedroom 3	12'6" x 9'10"	3.8m x 3.0m
Balcony 1	11'2" x 4'11"	3.4m x 1.5m
Balcony 2	8'6" x 10'2"	2.6m x 3.1m
Terrace 1	19'8" x 18'8"	6.0m x 5.7m
Terrace 2	32'6" x 26'7"	9.9m x 8.1m
Total	2,397.1 sqft	222.7 sqm



W Provision for wardrobe | H High units | W Wardrobe | C Cupboard | U Utility

Specifications



INTERIOR FINISHES

- Engineered flooring to living, dining, kitchen, hallways and reception rooms
- Timber veneer front entrance doors (with multipoint locking system and spy hole)
- Painted internal doors with satin chrome door furniture
- Skirting in white satin finish
- Smooth painted ceiling
- Double glazed doors onto terraces and balconies (where applicable)
- Decking to balconies
- Paving to terraces

KITCHEN

- Individually designed contemporary kitchens
- Marble effect composite worktops and splash back
- Matt finish wall and floor units
- Black knurled handles to base units
- Under cabinet feature lighting to wall units
- Feature framed glass shelves
- Matt Black mixer tap
- 1 ½ bowl under-mounted sink
- 4 zone touch control induction hob and concealed telescopic extractor hood
- Single oven
- Built in microwave
- Integrated fridge freezer
- Integrated dishwasher
- Washer Dryer (located in utility/cupboard)
- Compartmentalised waste storage

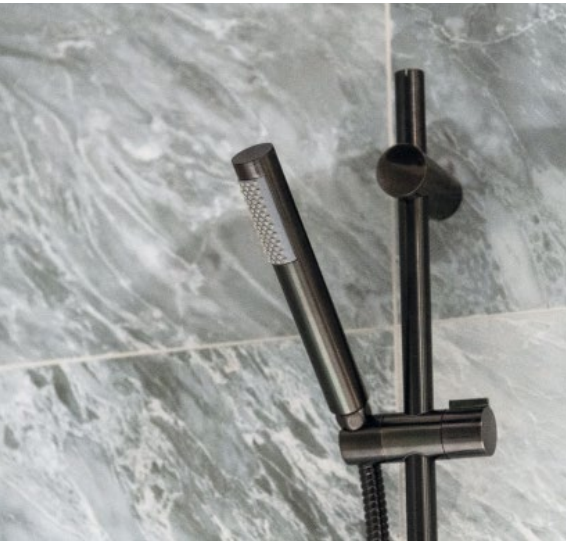
BATHROOMS/SHOWER ROOMS

- Large concrete effect floor tiles
- Marble effect wall tiles
- Feature tiled wall above vanity and to shower/bath
- Vanity top with surface mounted basin and wall mounted black tap
- Feature black frame glass shower enclosure /screen with white shower tray
- Matt black overhead shower, hand shower and mixer set
- Floor mounted WC with soft-close seat and dual flush control
- Mirrored cupboard with feature lighting, internal shelves, shaver socket and under counter storage
- Matt black heated towel rail
- Matt finish bath panels (where applicable)

BEDROOMS

- Fitted Carpets
- Bespoke fitted wardrobes to Master Bedroom (and 2nd Bedroom in three bedroom apartments)
- Walk in dressing area (where applicable)

Your attention is drawn to the fact that it might not be possible to provide the branded product as referred to in the specification. In such cases, a similar alternative will be provided. Berkeley reserves the right to make these changes as required.



HEATING

- Zoned underfloor heating throughout
- Centrally provided heating and hot water, individually metered to each apartment

LIGHTING/ELECTRICAL FITTINGS

- Energy efficient LED downlights to all areas
- Automatic lighting to wardrobes and storage cupboards
- Feature lighting to exterior of bathroom/shower room cabinets
- Shaver sockets to bathroom/shower rooms
- Satin chrome socket outlets at worktop height in kitchens
- White switches and sockets to all other locations
- Master light switch to hallway

TELECOMMUNICATIONS

- Telephone points fitted in all bedrooms and living areas
- TV/FM/satellite fitted in all bedrooms and living areas
- Wired for Sky Q, Virgin Media, Multi-Room and High Definition ready television
- Cabling for digital, TV, DAB and FM radio, telephone and data services
- High speed broadband connectivity for all units

SECURITY AND PEACE OF MIND

- Access to apartments via audio/video door entry system and electronic access to internal areas
- Multipoint locking front entrance door to apartment
- Mains powered smoke detector with battery back up
- 10 Year Premier Guarantee Warranty

COMMUNAL AREAS

- Tiled flooring to entrance
- Carpet to hallways and staircases throughout
- Lifts access to all floors
- Concierge located in Hartingtons
- Residents private swimming pool and gym located in Hartingtons
- Secure underground car parking, available by separate negotiation, located in Hartingtons (some include car charging points)
- Secure cycle storage
- Architecturally designed hard and soft landscaping featuring internal courtyard and gardens

Your attention is drawn to the fact that it might not be possible to provide the branded product as referred to in the specification. In such cases, a similar alternative will be provided. Berkeley reserves the right to make these changes as required.



Customer relations



We want to ensure you are happy with every aspect of your new home, so we look after our customers at every stage with expert advice, attention to detail and continuous communication. From exchange of contracts, your dedicated Customer Relations Manager will help with any questions you may have.

Here is what you can expect:

- From the day you exchange – until the day you complete – we'll update you regularly on progress
- You will be given your own login credentials at reservation to access your personal MyHome Plus account where you will be able to view the development, property, construction progress and buying process information
- Sustainability is high on any responsible builder's agenda. We promise to fully communicate the environmental features of our developments to all of our customers
- Our Customer Relations Manager will present a selection of designer-conceived colour palettes to help you find the interior finish that most suits your style
- We'll meet you on-site to demonstrate all the functions and facilities of your new apartment.
- We personally hand over your key on completion day and make sure everything is to your satisfaction

- The 2-year warranty with 24-hour emergency service has a dedicated customer service telephone number and from the 3rd to the 10th year you'll have the added security protection of the Premier Guarantee warranty

Finally we'll contact you after 7 days, at 4 weeks and 7 months after you move in, to make sure everything continues smoothly.

“

You paid excellent attention to quality. The process made me feel special. The common areas are beautifully furnished, you haven't skimped on detail. Everything looks good and functions well. The customer service was super. You were very good at answering my questions and the people accompanying me to any site visits were very knowledgeable.

”

Berkeley Homes Purchaser
at Woodberry Down

Partnership & Collaboration

“We have to create real communities. Not just homes, but beautiful places with the amenities and green open spaces that bring people together. We have to talk to people, listen to everyone, and ensure we’re providing the facilities they really need and care about most.

If we keep the focus on people, then housing offers so much more than just shelter. It becomes a powerful force for good.”

Tony Pidgley CBE, Chairman of the Berkeley Group

A new neighbourhood for north London:

Woodberry Down in Hackney, north London is one of the capital’s largest-estate regeneration projects providing place-shaping, social and economic change on an inspiring scale.

The concepts of placemaking and people sit at the heart of the 30-year development project, which on completion will see 1,890 existing replaced by over 5,500 new build apartments (of which 41% will be affordable). 1,479 homes have been delivered to date with a further 563 currently under construction.

The long-term transformation can be attributed to the effective collaboration between the four main delivery partners:

- Hackney Council
- Genesis Housing Association
- Berkeley Homes
- Resident-led Woodberry Down Community Organisation (WDCO)

Woodberry Down is now a mixed, balanced and integrated community. Walking through the new neighbourhood, it is impossible to tell the difference between private and social housing. High quality amenities such as a new secondary school and community centre, as well as shops for a range of budgets, continue to be provided. In addition, there is 2.61 acres of new parkland – awarded a prestigious Green Flag in 2016/17. All are fundamental partnership objectives with one goal in mind: to make Woodberry Down a successful new London district for existing residents and new homebuyers alike.

Manor House Development Trust (MHDT) is also a key player in Woodberry Down. This award-winning, community-led organisation funded annually by Genesis and Hackney Council to drive forward economic and social regeneration through building community resilience and sustained empowerment to secure Woodberry Down’s long-term future.

Thanks to the efforts of all involved in the regeneration project, Woodberry Down has become a thriving, sociable place to live. Well attended events such as the annual Hidden River Festival have become a much-loved fixture in the area’s community calendar, while the nature reserve provides a gorgeous waterside setting for the new homes, addition to attracting a new wave of visitors to Woodberry Down.

A people-centred approach

We want to create places people will love as their own. Places that inspire a sense of pride, belonging and community spirit.

This can only be achieved through listening to people and putting their wellbeing at the heart of everything we do. We have to show care, passion and attention to detail, day after day.

When we approach development in this way, local people become our partners. They bring their own energy and ideas, and they turn a place into a real community.

IN PARTNERSHIP WITH



Designed for life

Our customers are at the heart of all our decisions.

We aim to understand their needs and consistently meet or exceed their expectations. The service we provide is professional, efficient and helpful to make the home buying process as straightforward and enjoyable as possible. Our levels of customer service aim to be comparable to other top brands.

Customer service is our priority

All our customers are provided with a commitment that when they buy a new home from Berkeley they can be safe in the knowledge that it is built to very high standards of design and quality, has low environmental impact and that they will enjoy an exceptional customer experience. Each customer receives tailored information relating to their purchase and has a dedicated point of contact throughout the customer journey.

Green living and sustainable development is top of our agenda

As a company, we are committed to reducing energy, water and waste on our construction sites, in our offices and in the homes that we build. Almost all of our developments are built on brownfield land and we always take care to protect and enhance biodiversity and natural habitats. Our homes include features to encourage sustainable living such as dual-flush WCs, recycling bins and energy efficient white goods.

Quality is at the heart of everything we do

At Berkeley, quality takes precedence, from choosing the right location and style of home, to the construction processes we practise, the materials we use and the specifications we put into our homes. For extra peace of mind, in addition to the 10-year warranty all new homes receive, Berkeley operates a 2-year policy with dedicated Customer Service

teams on hand 24 hours a day to deal with enquiries quickly and effectively.

Unparalleled choice of homes in the most sought after locations

As one of the UK's leading house builders, we are able to offer our customers an unrivalled choice of property location, size and type. From city penthouses to country retreats, modern studio apartments to traditional family homes, you will find the perfect home to match your requirements. Our homes are also built in some of Britain's most desirable locations from market towns and rural villages to major towns and cities, and countryside to the coast – we build in the locations you want to live.

A commitment to creating sustainable communities

Berkeley's homes and developments are not just built for today. They are designed to enhance the neighbourhoods in which they are located permanently. We achieve this through our commitment to excellence in design, sensitive landscaping, sympathetic restoration, and impeccable standards of sustainability. We aim to address the needs not only of our customers but their neighbours and the broader community of which they are a part. It is a long-term view: we want to create exceptional places for people to live, work and relax in, and build communities that will thrive today and for years to come.



Proud to be a member of the Berkeley Group of Companies

Berkeley | St Edward | St George | St James | St William | St Joseph

www.berkeleygroup.co.uk

A COMMITMENT TO THE FUTURE

Over the years, The Berkeley Group has won many prestigious awards for the quality, design and sustainability of its developments.

Our Vision is Berkeley's plan for the business, designed to raise standards higher still. Our goal is to be a world-class company creating successful, sustainable places where people aspire to live.

We take our responsibilities towards our customers, the environment, the workforce and the communities in which we work very seriously.

Our plan for the business has five areas of focus:

Customers, Homes, Places, Operations and Our People.

OUR VISION

To be a world-class business generating long-term value by creating successful, sustainable places where people aspire to live.

FIVE FOCUS AREAS

AN EXCEPTIONAL CUSTOMER EXPERIENCE

We aim to put customers at the heart of our decisions. Dedicated sales teams will provide exceptional service throughout the buying process, and teams will manage the customer relationship from exchange of contracts through to completion, delivery of the new home and after occupancy.

HIGH QUALITY HOMES

When you buy a new home from Berkeley you can be safe in the knowledge that it is built to very high standards of design and quality and has low environmental impact. We meet specific space standards for new homes and aim to deliver a home which has fibre broadband infrastructure.

GREAT PLACES

We seek to create beautiful, successful places characterised by the quality of their design, external spaces, transport and access to jobs and amenities. These are places where people choose to live, work and spend their time and which directly encourage people's well-being and quality of life.

EFFICIENT AND CONSIDERATE OPERATIONS

We reduce the impact of the construction process on the local community by registering all of our sites with the Considerate Constructors Scheme. We set targets to reduce water, energy and waste. We work with our supply chain to ensure high quality services and materials are consistently provided.

A COMMITMENT TO PEOPLE AND SAFETY

Safety is a high priority on all of our construction sites. We also aim to have a positive impact on society and enable young and unemployed people to get into work through our support of the Berkeley Foundation.

Some features are only applicable to specific developments. Please ask sales negotiator for further information.



Berkeley takes social responsibility very seriously. In 2011 we set up The Berkeley Foundation, with the aim of supporting Britain's young people and their communities.

We do this through a number of partner charities that tackle some of the most pressing social problems affecting young people today, including homelessness and unemployment. The money raised comes part from the Berkeley Group, and also through the tireless and inventive efforts of our staff.

We have set a goal for The Berkeley Foundation to invest £10 million over the next five years to support young people and their communities. Every penny will be spent on charitable activities and worthy causes to ensure that maximum benefit is achieved.

www.berkeleyfoundation.org.uk

www.berkeleygroup.co.uk



Proud to be a member of the Berkeley Group of Companies



Contact us



Woodberry Down

Sales & Marketing Suite
Riverside Apartments,
Woodberry Grove,
Finsbury Park,
London N4 2BA

020 8985 9918

woodberry.down@berkeleygroup.co.uk

woodberry-down.co.uk

Directions to marketing suite

By Car: From Seven Sisters Road, driving towards Manor House Station turn left onto Woodberry Grove, the marketing suite is 300ft on your right.

By Train: Exit via exit 2 at Manor House Station (Piccadilly Line), walk straight down Woodberry Down to the end. Turn right onto Woodberry Grove, the Sales & Marketing Suite is further down on the right-hand side of the road (just before the bridge).

Map for illustration purposes only and not to scale. The information in this document is indicative and is intended to act as a guide only as to the finished product. Accordingly, due to Berkeley policy of continuous improvement, the finished product may vary from the information provided. These particulars should not be relied upon as statements of fact or representations and applicants must satisfy themselves by inspection or otherwise as to their correctness. This information does not constitute a contract or warranty. The dimensions given on plans are subject to minor variations and are not intended to be used for carpet sizes, appliance sizes or items of furniture. Willowbrook House is a marketing name and will not necessarily form part of the approved postal address. All Computer Generated Images (CGIs) are indicative only. All lifestyle photography is indicative only. Applicants are advised to contact Berkeley to ascertain the availability of any particular property. E738/22CA/1119/V3



Proud to be a member of the
Berkeley Group of companies



Berkeley
Designed for life

