

An architectural rendering of the King's Road Park development in London. The image shows a mix of modern high-rise glass buildings and older brick structures. In the center is a landscaped park area with green lawns, numerous trees (some in bloom with pink flowers), and a paved pedestrian walkway. People are depicted walking and sitting in the park, giving a sense of scale and life. The sky is blue with scattered white clouds.

KING'S
ROAD
PARK

LONDON SW 6

THE TERRACE COLLECTION

Situated just 60 metres from the King's Road and close to the River Thames, King's Road Park is in one of London's most desirable locations. Ideally situated in Zone 2 and only a 10 minute walk from both an Underground and Overground station, this sought-after address is well connected and close to some of the very best amenities that London has to offer.

King's Road Park is a stylish collection of suites, 1, 2, 3 and 4 bedroom apartments and penthouses set within six acres of beautiful landscaping, including a public park, square and residents' garden.

The world-class residents' facilities include a 25m swimming pool, vitality pool, sauna and steam room, golf simulator and games room, gymnasium, two fitness studios, treatment rooms, 24-hour concierge, private dining room, residents' lounge with atrium, two cinema rooms and private meeting rooms.

Comprising 30 exclusively selected apartments, and spread over all three buildings within the first phase of King's Road Park, The Terrace Collection offers a connection to nature and the English countryside from the confines of your

own private balcony or terrace.

Each of these spaces are at least 150 sq. ft, with many offering south or south-west facing views.

The collection was born from a desire to create both an elegant yet simple space, while bringing the luxurious elements of our exceptional Johnson Naylor interiors outside to your own quarter, escaping the hustle and bustle of Central London.

Teaming up with Gillespies, St William has created a unique combination of planting and furniture to complement your brand new apartment.



THE PLANTER RANGES

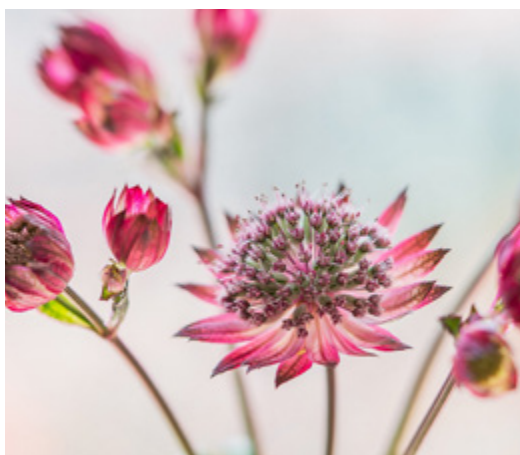


We've worked closely with Gillespies to offer you a superb choice of plants in your Balcony Package.

Our three ranges, Magnolia, Azalea and Camellia, that also feature in our private residents' garden are available in a mix of colours which will make your outdoor space an even more wonderful place to be, which will add vibrancy to your outdoor space.

THE MAGNOLIA RANGE – SUITED TO SOUTH AND WEST FACING APARTMENTS.

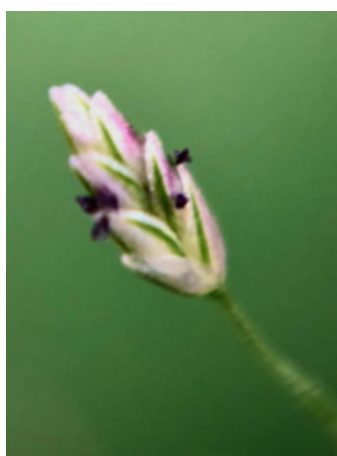
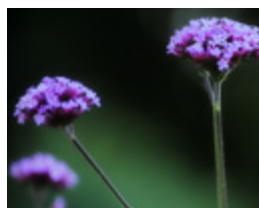
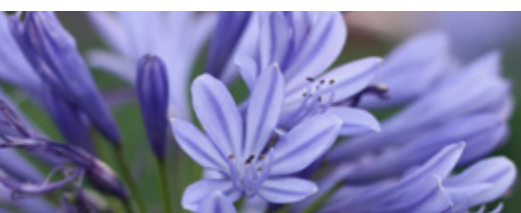
A collection of purple shade plants available in two ranges.



Feature Plant – Magnolia 'Susan'

THE MAGNOLIA RANGE – SUITED TO NORTH AND EAST FACING APARTMENTS.

A collection of purple shade plants available in two ranges.



THE AZALEA RANGE – SUITED TO SOUTH AND WEST FACING APARTMENTS.

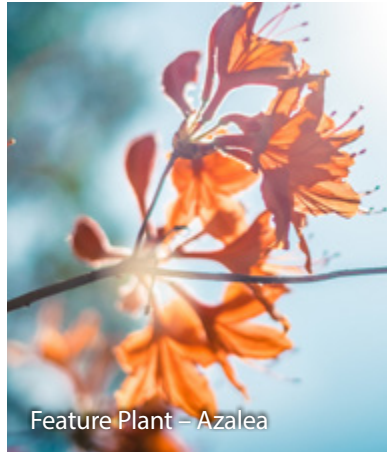
A collection of orange and yellow plants available in two ranges.





THE AZALEA RANGE – SUITED TO NORTH AND EAST FACING APARTMENTS.

A collection of orange and yellow plants available in two ranges.



THE CAMELIA RANGE – SUITED TO SOUTH AND WEST FACING APARTMENTS.

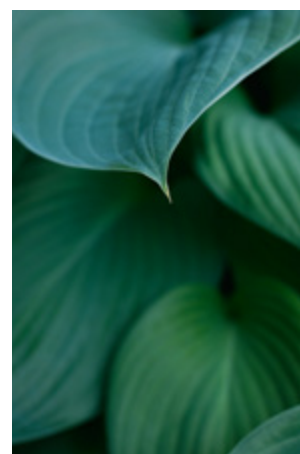
A collection of blue and purple plants available in two ranges.



THE CAMELIA RANGE – SUITED TO NORTH AND EAST FACING APARTMENTS.



A collection of blue and purple plants available in two ranges.





CONTACT DETAILS:

1 Sands End Lane
London
SW6 2FP

Telephone: +44 (0)20 3004 4112
sales@kingsroadpark.co.uk
www.kingsroadpark.co.uk

DISCLAIMER

Please be aware that these details are intended to give a general indication of properties available and should be used as a guide only. The company reserves the right to alter the packages details at any time. The contents herein shall not form any part of any contract or be a representation including such contract. These packages are offered subject to availability. Applicants are advised to contact the sales team or the appointed agents to ascertain the availability of any particular type of packages so as to avoid a fruitless journey. Computer generated images of furniture and King's Road Park are indicative only.



St William
Designed for life