



INTRODUCING THE STUNNING

Bedivere apartments

An exquisite collection of 1, 2 and 3 bedroom apartments situated in an outstanding position overlooking historic Winchester. In one of the city's most affluent and desirable locations, Knights Quarter boasts an impressive entrance boulevard, surrounded by magnificent grounds, combining striking architecture, spaciouly designed luxurious interiors and access to private courtyard gardens.

Development
Plan



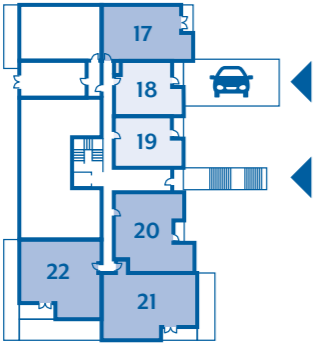


CGI IS INDICATIVE ONLY

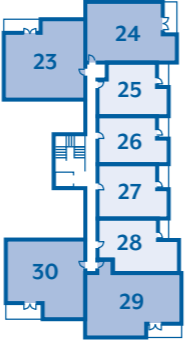
BEDIVERE APARTMENTS

Welcome to the Bedivere Apartments. A stunning collection of 1, 2 and 3 bedroom apartments located at the heart of Knights Quarter.

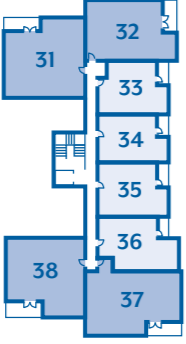
GROUND FLOOR



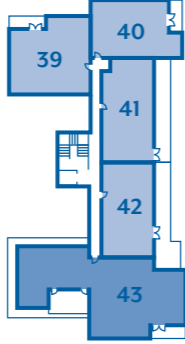
FLOOR 1



FLOOR 2

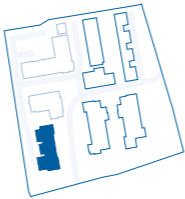


FLOOR 3



- 1 BEDROOM APARTMENTS
- 2 BEDROOM APARTMENTS
- 3 BEDROOM APARTMENTS

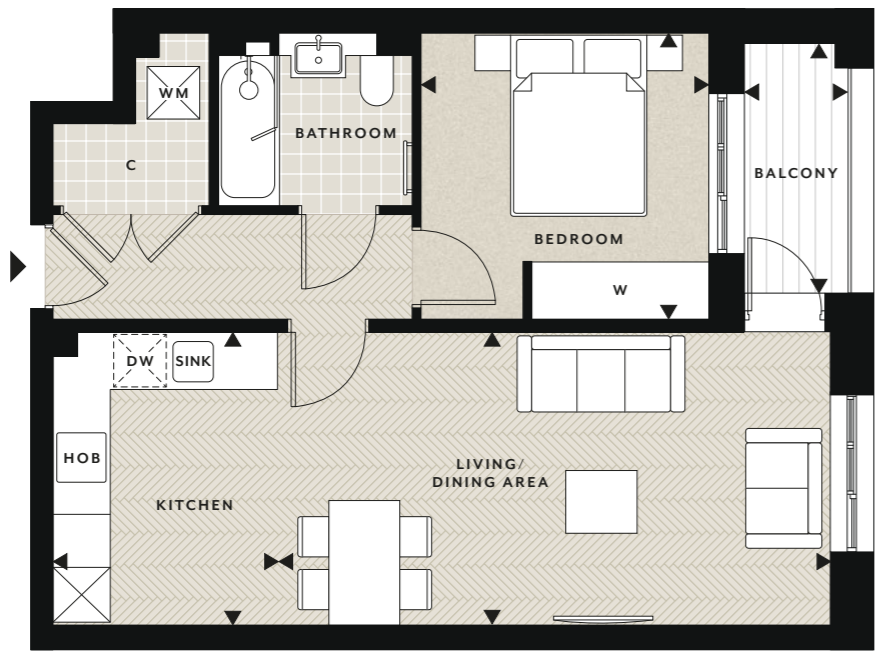
NORTH



CGI IS INDICATIVE ONLY

1 bedroom apartment

GROUND, 1ST, 2ND FLOORS • PLOTS 18, 25, 33

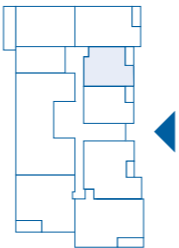


NORTH



ACCOMMODATION

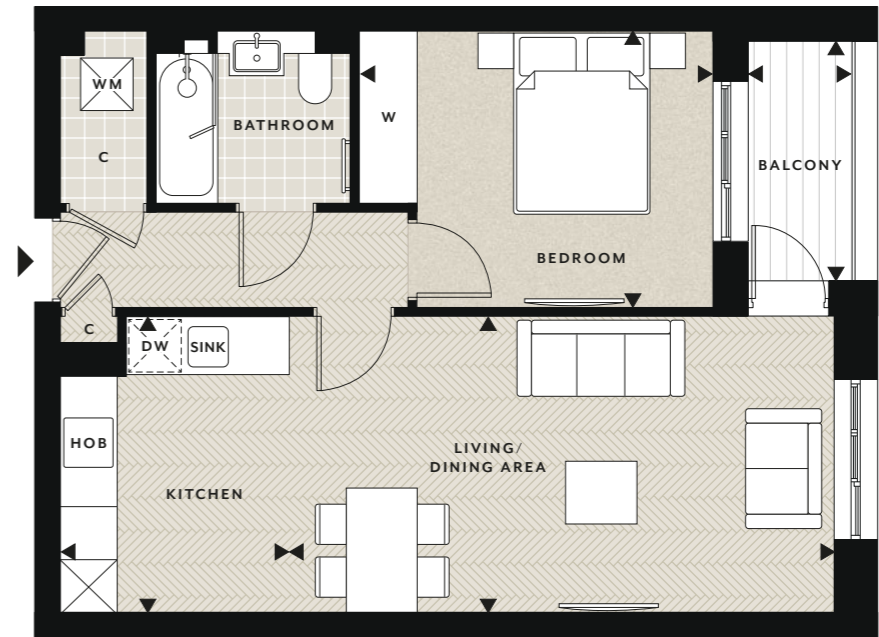
Living / Dining Area	6.26m x 3.32m	20'6" x 10'11"
Kitchen	3.32m x 2.53m	10'11" x 8'4"
Bedroom	3.25m x 3.23m	10'8" x 10'7"
Balcony	2.81m x 1.02m	9'3" x 3'4"
Total Internal Area	53.27 sq m	573 sq ft



Floorplans shown for The Bedivere Apartments at Knights Quarter are for approximate measurements only. Exact layouts and sizes may vary. All measurements may vary within a tolerance of 5%. The dimensions are not intended to be used for carpet sizes, appliance sizes or items of furniture. Floorplans have been sized to fit the page, as a result this plan may not be at the same scale as plans on other pages.

1 bedroom apartment

GROUND, 1ST, 2ND FLOORS • PLOTS 19, 26, 34

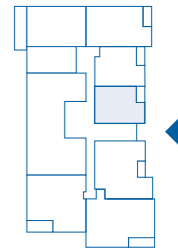


NORTH



ACCOMMODATION

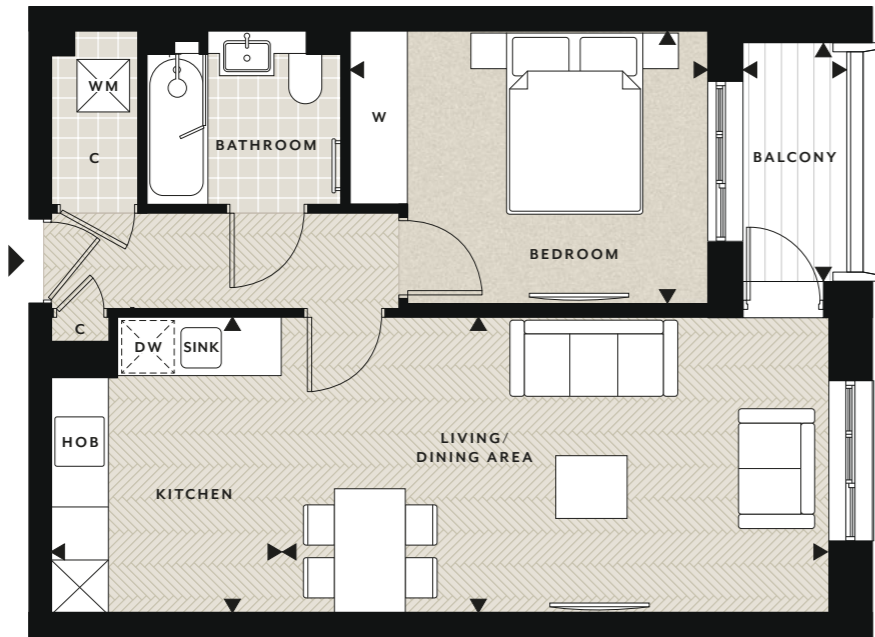
Living / Dining Area	6.17m x 3.35m	20'3" x 11'0"
Kitchen	3.35m x 2.59m	11'0" x 8'6"
Bedroom	4.00m x 3.13m	13'1" x 10'3"
Balcony	2.71m x 1.17m	8'11" x 3'10"
Total Internal Area	53.22 sq m	573 sq ft



Floorplans shown for The Bedivere Apartments at Knights Quarter are for approximate measurements only. Exact layouts and sizes may vary. All measurements may vary within a tolerance of 5%. The dimensions are not intended to be used for carpet sizes, appliance sizes or items of furniture. Floorplans have been sized to fit the page, as a result this plan may not be at the same scale as plans on other pages.

1 bedroom apartment

1ST, 2ND FLOORS • PLOTS 27, 35

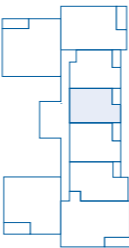


NORTH



ACCOMMODATION

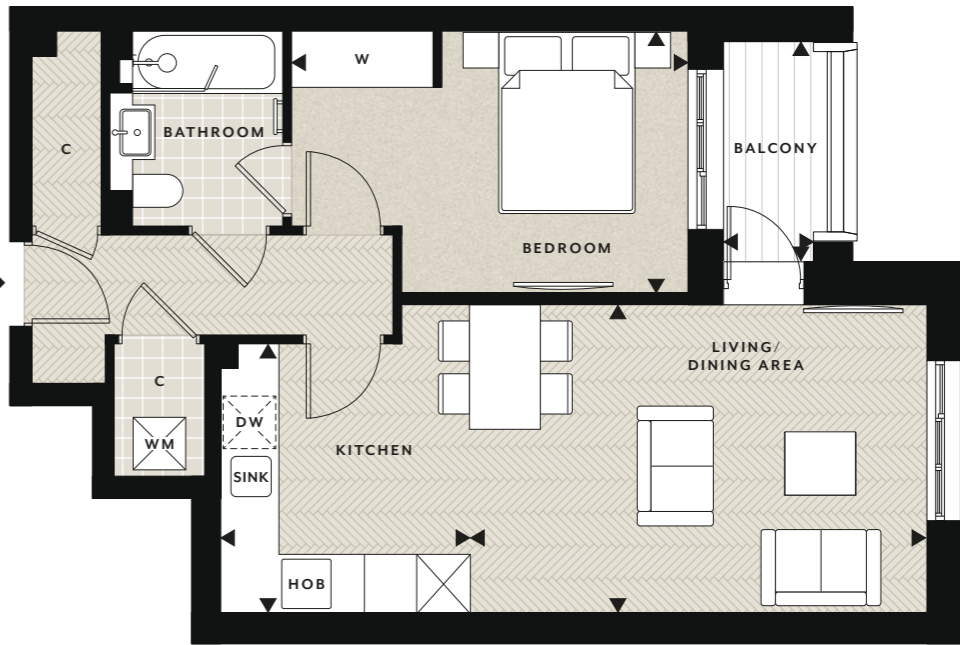
Living / Dining Area	6.20m x 3.35m	20'4" x 11'0"
Kitchen	3.35m x 2.59m	11'0" x 8'6"
Bedroom	4.04m x 3.08m	13'3" x 10'1"
Balcony	2.71m x 1.18m	8'11" x 3'10"
Total Internal Area	53.42 sq m	575 sq ft



Floorplans shown for The Bedivere Apartments at Knights Quarter are for approximate measurements only. Exact layouts and sizes may vary. All measurements may vary within a tolerance of 5%. The dimensions are not intended to be used for carpet sizes, appliance sizes or items of furniture. Floorplans have been sized to fit the page, as a result this plan may not be at the same scale as plans on other pages.

1 bedroom apartment

1ST, 2ND FLOORS • PLOTS 28, 36

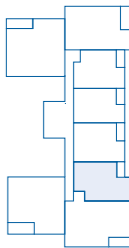


NORTH



ACCOMMODATION

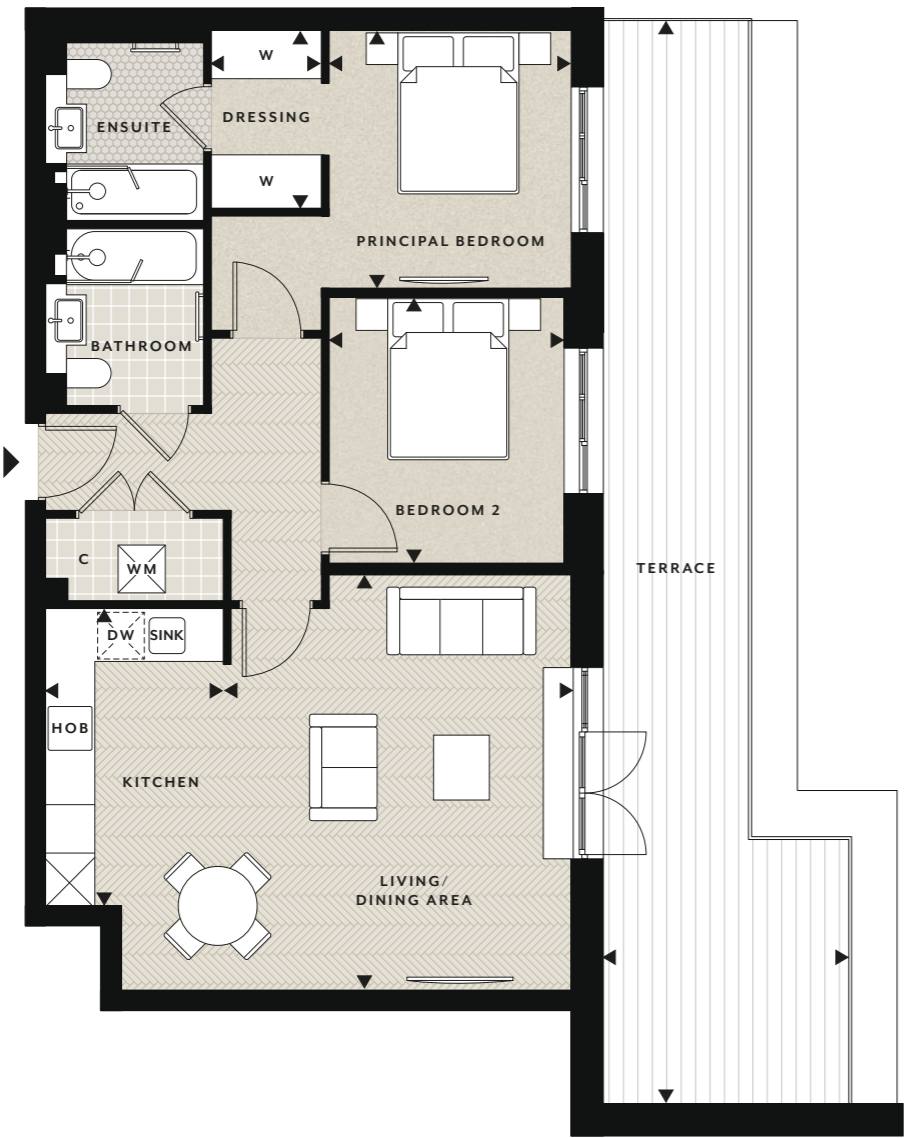
Living / Dining Area	5.16m x 3.48m	16'11" x 11'5"
Kitchen	3.03m x 2.82m	9'11" x 9'3"
Bedroom	4.48m x 2.95m	14'8" x 9'8"
Balcony	2.49m x 1.02m	8'2" x 3'4"
Total Internal Area	53.82 sq m	579 sq ft



Floorplans shown for The Bedivere Apartments at Knights Quarter are for approximate measurements only. Exact layouts and sizes may vary. All measurements may vary within a tolerance of 5%. The dimensions are not intended to be used for carpet sizes, appliance sizes or items of furniture. Floorplans have been sized to fit the page, as a result this plan may not be at the same scale as plans on other pages.

2 bedroom apartment

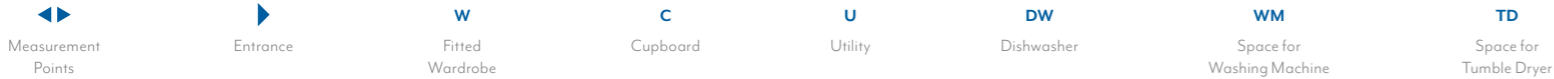
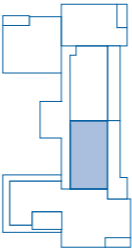
3RD FLOOR • PLOT 42



ACCOMMODATION

Living / Dining Area	5.16m x 4.32m	16'11" x 14'2"
Kitchen	3.68m x 2.20m	12'1" x 7'3"
Principal Bedroom	3.19m x 3.00m	10'6" x 9'10"
Dressing Room	2.19m x 1.36m	7'2" x 4'6"

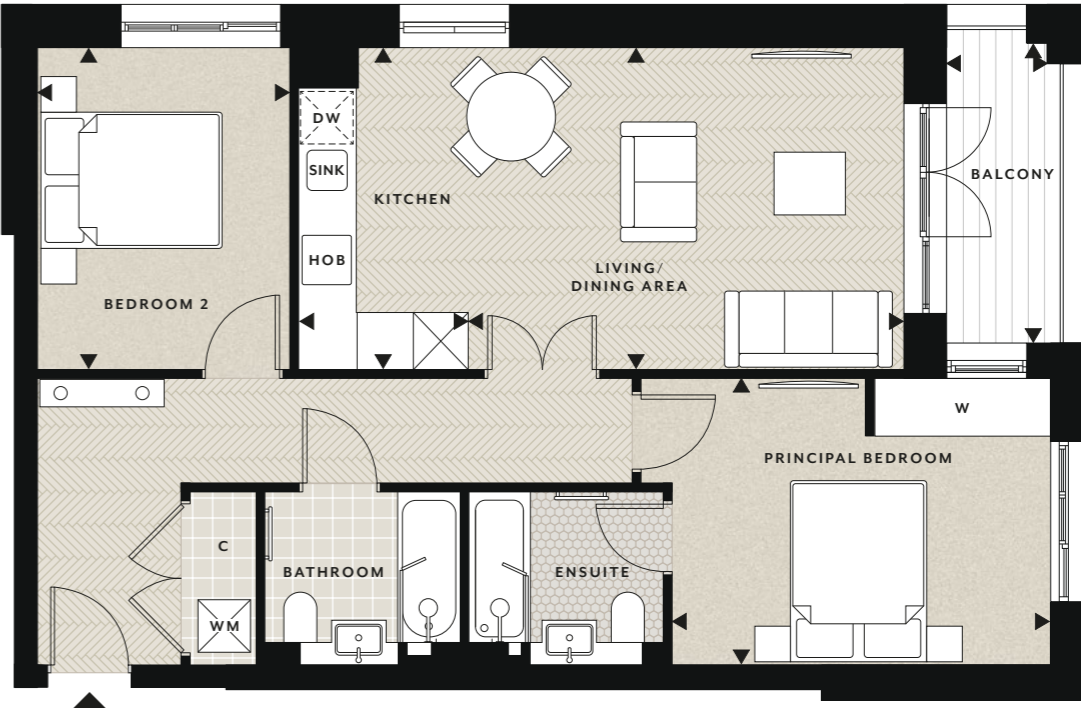
Bedroom 2	3.31m x 2.91m	10'10" x 9'7"
Terrace	13.41m x 3.04m	44'0" x 10'0"
Total Internal Area	75.91 sq m	817 sq ft



Floorplans shown for The Bedivere Apartments at Knights Quarter are for approximate measurements only. Exact layouts and sizes may vary. All measurements may vary within a tolerance of 5%. The dimensions are not intended to be used for carpet sizes, appliance sizes or items of furniture. Floorplans have been sized to fit the page, as a result this plan may not be at the same scale as plans on other pages.

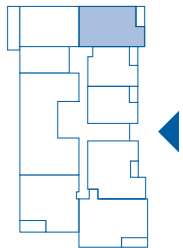
2 bedroom apartment

GROUND, 1ST, 2ND, 3RD FLOORS • PLOTS 17, 24, 32, 40



ACCOMMODATION

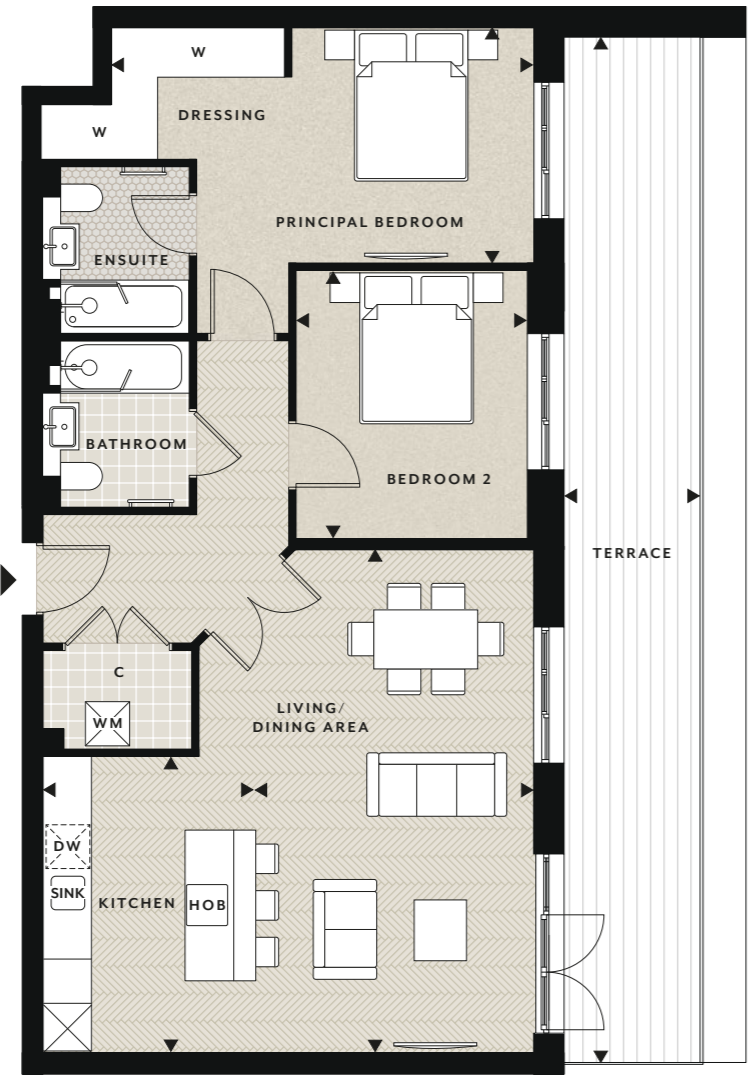
Living / Dining Area	4.92m x 3.64m	16'2" x 11'11"
Kitchen	3.64m x 1.92m	11'11" x 6'4"
Principal Bedroom	4.28m x 3.24m	14'1" x 10'8"
Bedroom 2	3.64m x 2.85m	11'11" x 9'4"
Balcony	3.38m x 1.16m	11'1" x 3'10"
Total Internal Area	73.69 sq m	793 sq ft



Floorplans shown for The Bedivere Apartments at Knights Quarter are for approximate measurements only. Exact layouts and sizes may vary. All measurements may vary within a tolerance of 5%. The dimensions are not intended to be used for carpet sizes, appliance sizes or items of furniture. Floorplans have been sized to fit the page, as a result this plan may not be at the same scale as plans on other pages.

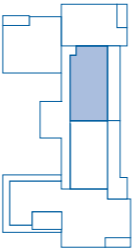
2 bedroom apartment

3RD FLOOR • PLOT 41



ACCOMMODATION

Living / Dining Area	6.65m x 3.69m	21'10" x 12'1"
Kitchen	3.92m x 2.80m	12'0" x 9'2"
Principal Bedroom	5.58m x 3.11m	18'4" x 10'2"
Bedroom 2	3.55m x 3.05m	11'8" x 10'0"
Terrace	13.56m x 1.80m	44'6" x 5'11"
Total Internal Area	86.83 sq m	935 sq ft

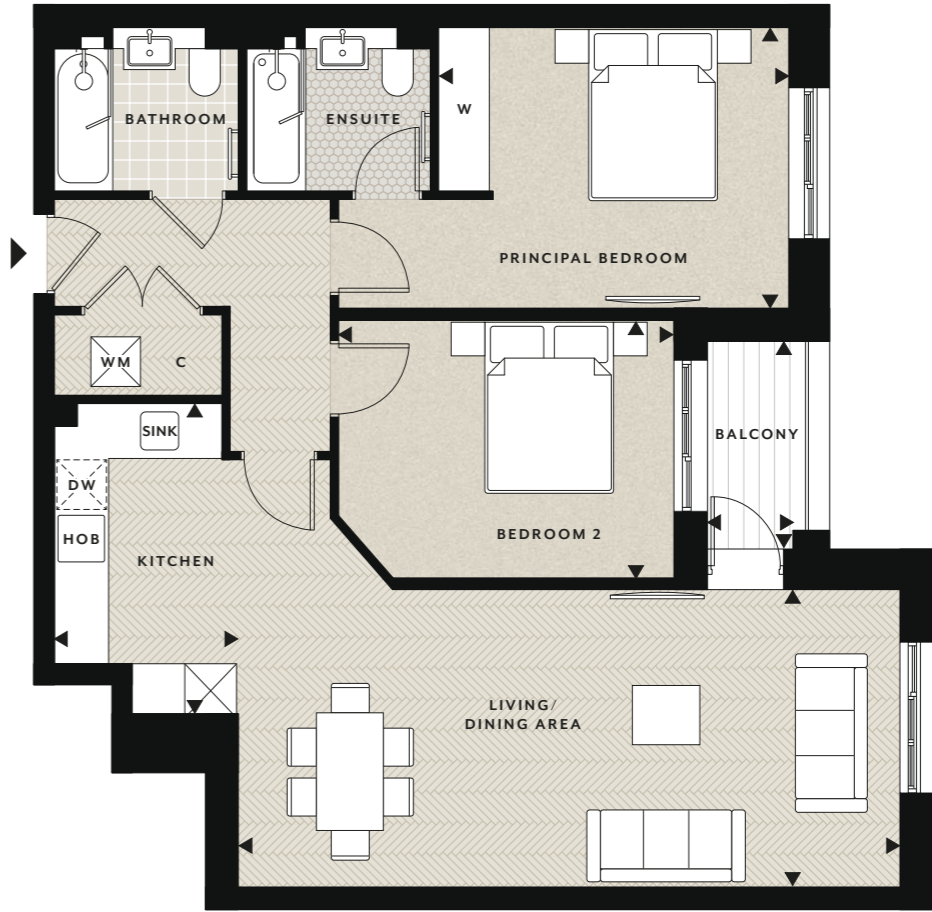


- Measurement Points
- Entrance
- Fitted Wardrobe
- Cupboard
- Utility
- Dishwasher
- Space for Washing Machine
- Space for Tumble Dryer

Floorplans shown for The Bedivere Apartments at Knights Quarter are for approximate measurements only. Exact layouts and sizes may vary. All measurements may vary within a tolerance of 5%. The dimensions are not intended to be used for carpet sizes, appliance sizes or items of furniture. Floorplans have been sized to fit the page, as a result this plan may not be at the same scale as plans on other pages.

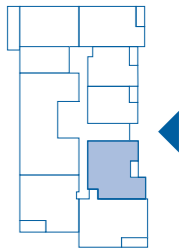
2 bedroom apartment

GROUND FLOOR • PLOT 20



ACCOMMODATION

Living / Dining Area	7.92m x 3.56m	26'0" x 11'8"
Kitchen	3.72m x 2.20m	12'2" x 7'3"
Principal Bedroom	4.19m x 3.35m	13'9" x 11'0"
Bedroom 2	4.02m x 3.07m	13'2" x 10'1"
Balcony	2.48m x 1.02m	8'2" x 3'4"
Total Internal Area	85.33 sq m	918 sq ft

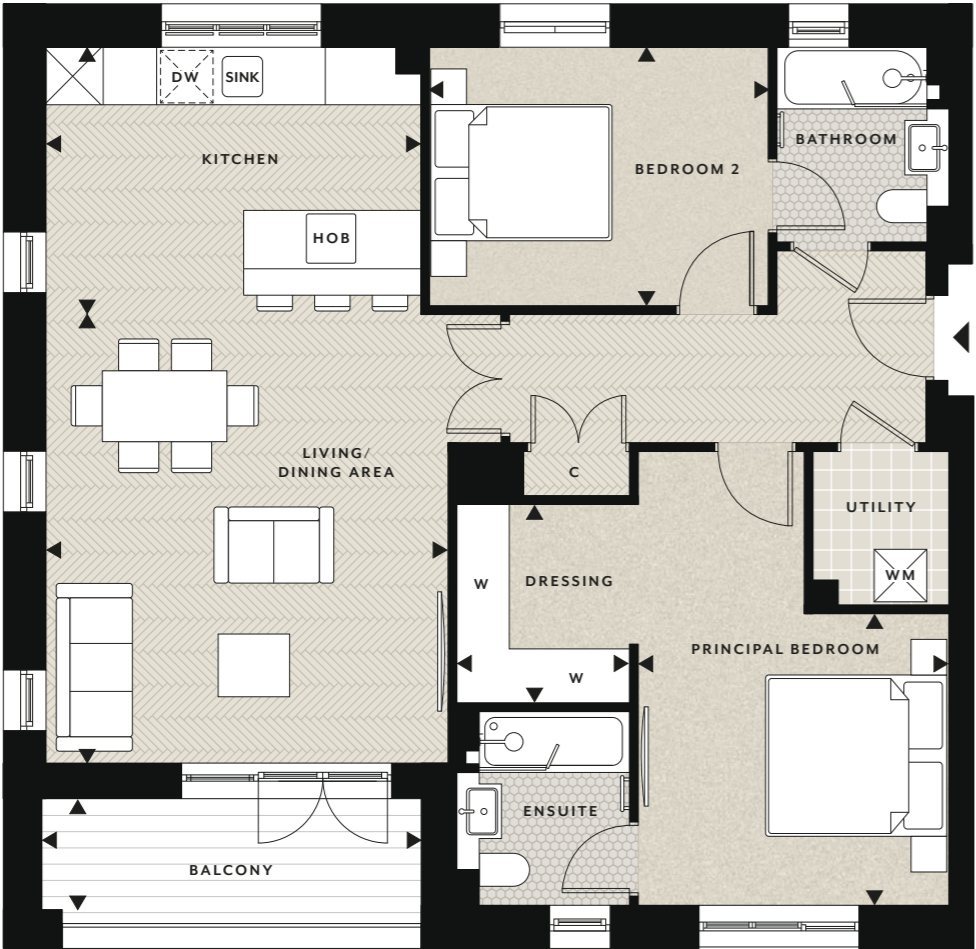


- Measurement Points
- Entrance
- Fitted Wardrobe
- Cupboard
- Utility
- Dishwasher
- Space for Washing Machine
- Space for Tumble Dryer

Floorplans shown for The Bedivere Apartments at Knights Quarter are for approximate measurements only. Exact layouts and sizes may vary. All measurements may vary within a tolerance of 5%. The dimensions are not intended to be used for carpet sizes, appliance sizes or items of furniture. Floorplans have been sized to fit the page, as a result this plan may not be at the same scale as plans on other pages.

2 bedroom apartment

GROUND, 1ST, 2ND FLOORS • PLOTS 22, 30, 38



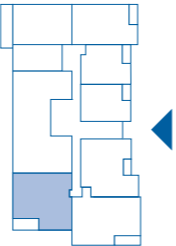
NORTH



ACCOMMODATION

Living / Dining Area	5.08m x 4.54m	16'8" x 14'11"
Kitchen	4.23m x 3.02m	13'11" x 9'11"
Principal Bedroom	3.52m x 3.30m	11'7" x 10'10"
Dressing Room	2.23m x 1.96m	7'4" x 6'5"

Bedroom 2	3.83m x 2.92m	12'7" x 9'7"
Balcony	4.29m x 1.25m	14'1" x 4'1"
Total Internal Area	91.11 sq m	981 sq ft



Floorplans shown for The Bedivere Apartments at Knights Quarter are for approximate measurements only. Exact layouts and sizes may vary. All measurements may vary within a tolerance of 5%. The dimensions are not intended to be used for carpet sizes, appliance sizes or items of furniture. Floorplans have been sized to fit the page, as a result this plan may not be at the same scale as plans on other pages.

2 bedroom apartment

1ST, 2ND, 3RD FLOORS • PLOTS 23, 31, 39

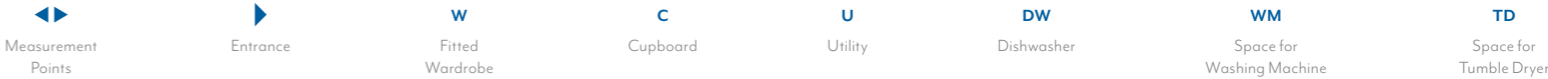
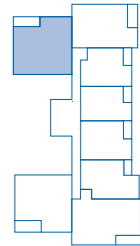


NORTH



ACCOMMODATION

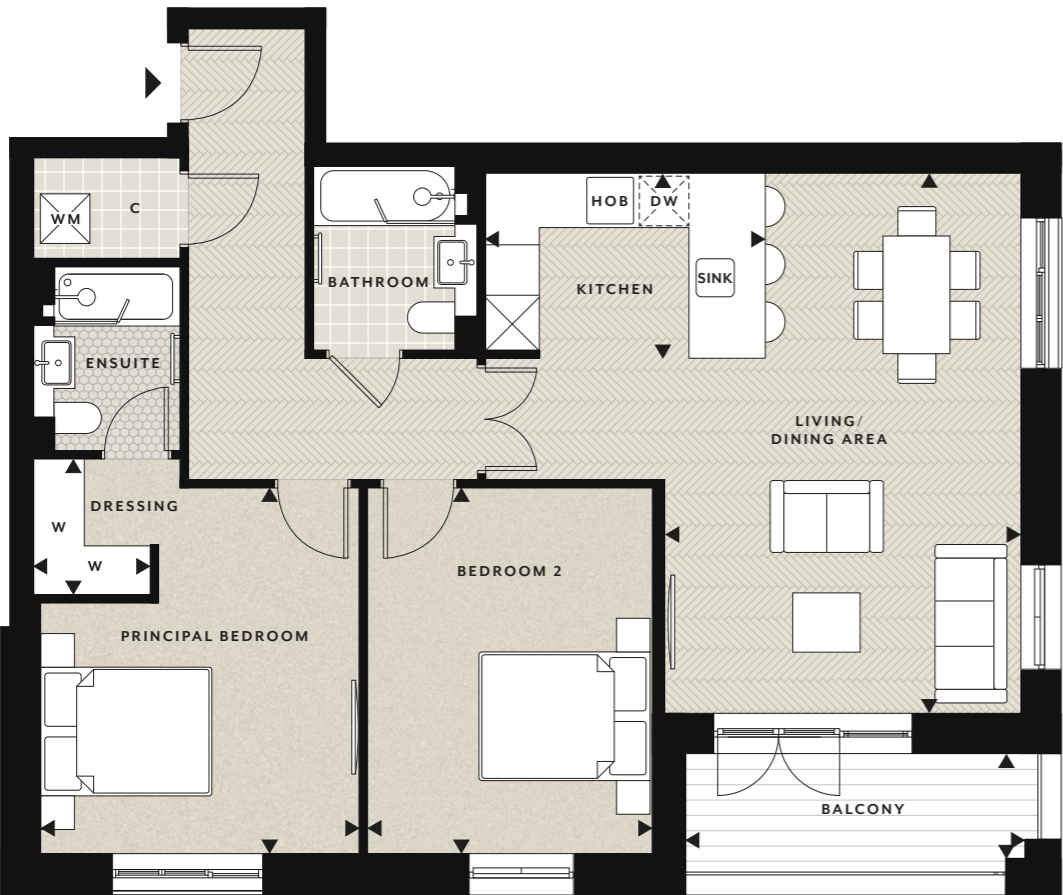
Living / Dining Area	4.96m x 4.54m	16'3" x 14'11"
Kitchen	4.23m x 3.15m	13'11" x 10'4"
Principal Bedroom	3.52m x 3.30m	11'7" x 10'10"
Bedroom 2	3.78m x 2.96m	12'5" x 9'9"
Balcony	4.29m x 1.24m	14'1" x 4'1"
Total Internal Area	91.67 sq m	987 sq ft



Floorplans shown for The Bedivere Apartments at Knights Quarter are for approximate measurements only. Exact layouts and sizes may vary. All measurements may vary within a tolerance of 5%. The dimensions are not intended to be used for carpet sizes, appliance sizes or items of furniture. Floorplans have been sized to fit the page, as a result this plan may not be at the same scale as plans on other pages.

2 bedroom apartment

GROUND, 1ST, 2ND FLOORS • PLOTS 21, 29, 37



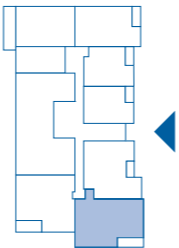
NORTH



ACCOMMODATION

Living / Dining Area	6.46m x 4.27m	21'2" x 14'0"
Kitchen	3.35m x 2.22m	11'0" x 7'3"
Principal Bedroom	4.38m x 3.82m	14'4" x 12'6"
Dressing Room	1.63m x 1.40m	5'4" x 4'7"

Bedroom 2	4.38m x 3.40m	14'4" x 11'2"
Balcony	4.06m x 1.25m	13'4" x 4'1"
Total Internal Area	91.49 sq m	985 sq ft



Floorplans shown for The Bedivere Apartments at Knights Quarter are for approximate measurements only. Exact layouts and sizes may vary. All measurements may vary within a tolerance of 5%. The dimensions are not intended to be used for carpet sizes, appliance sizes or items of furniture. Floorplans have been sized to fit the page, as a result this plan may not be at the same scale as plans on other pages.

3 bedroom apartment

3RD FLOOR • PLOT 43



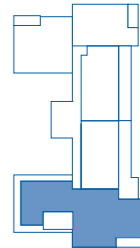
NORTH



ACCOMMODATION

Living Area	5.45m x 5.38m	17'11" x 17'8"
Dining Area	4.20m x 3.80m	13'9" x 12'6"
Kitchen	3.80m x 3.45m	12'6" x 11'4"
Principal Bedroom	4.27m x 3.65m	14'0" x 12'0"
Dressing Room	3.00m x 2.17m	9'10" x 7'1"

Bedroom 2	4.21m x 3.69m	13'10" x 12'11"
Bedroom 3	3.40m x 2.80m	11'2" x 9'2"
Balcony	4.06m x 1.25m	13'4" x 4'1"
Terrace	4.80m x 2.54m	15'9" x 8'4"
Total Internal Area	162.55 sq m	1750 sq ft



Floorplans shown for The Bedivere Apartments at Knights Quarter are for approximate measurements only. Exact layouts and sizes may vary. All measurements may vary within a tolerance of 5%. The dimensions are not intended to be used for carpet sizes, appliance sizes or items of furniture. Floorplans have been sized to fit the page, as a result this plan may not be at the same scale as plans on other pages.

BEDIVERE SPECIFICATION

Individually designed kitchen

- Contemporary styled kitchen, incorporating a choice of door
- Karonia Mistral Aria work surface with feature tiled splashback
- Siemens Built-in multi-functional fan assisted oven
- Siemens Built-in microwave oven
- Siemens 60cm Induction hob
- Integrated extractor (chimney extractor where hob is within the island unit)
- Siemens Integrated fridge/freezer
- Caple Integrated wine cooler
- Siemens Integrated dishwasher (selected plots)
- Space and plumbing for separate washer/dryer within utility cupboard
- Stainless steel single bowl sink with mixer tap
- LED under wall unit lighting
- Chrome power sockets above worktops

PENTHOUSE SPECIFICATION

- Silestone work surface
- Stainless Steel one and a half bowl sink
- Miele Built-in multi-functional fan assisted oven
- Miele Built-in combination microwave oven
- Miele 76cm Induction hob



Quality bathrooms

- Contemporary styled bathrooms with white sanitaryware with a choice of brushed nickel or brushed gold taps
- Mistral counter tops
- Washbasin with deck mounted taps
- Bespoke cabinetry to all bathrooms with mirror above and feature lighting
- Walk-in shower with fixed head and hand held shower to master ensuite
- Bath with shower and screen to bathroom
- Bath with hand held shower when separate walk-in/enclosed shower is included within bathroom/ensuite
- WC with dual flush plate, concealed cistern and soft close seat
- Chrome heated towel rail to all bathrooms
- Ceramic wall tiles to selected areas

Heating, electrical & lighting

- Electric panel radiators with individual thermostat with integrated timer
- Centralized mechanical extract ventilation to kitchen, bathroom and ensuite(s)
- White finished switches and sockets
- Shaver sockets provided to bathroom and ensuite(s)
- LED downlights to hall, kitchen/living area, all bedrooms and bathrooms
- LED pendant lighting to dining area



Interior finishes

- Two panelled entrance door in wood finish with satin brass handle
- Two panel satin white finished door with brushed nickel or brass finish door furniture
- Full height wardrobes with shaker hinged doors or walk in wardrobe to the principal bedroom (refer to individual apartment drawing)
- Satin paint finish to all internal joinery
- Herringbone laminate wood effect flooring to hall and kitchen/living/dining area
- Mosaic tiled floor to bathrooms (not applicable to penthouses)
- Fitted carpets to all bedrooms

PENTHOUSE SPECIFICATION

- Feature tiled floor to entrance hall
- Black metal balustrade to stairs leading to Sun Room (where applicable)



Communal areas

- Video door entry phone system linked from entrance door
- Clear toughened glass finish balustrades with stainless steel handrail and supports from basement to first floor. Metal balustrade and handrail to all other floors
- Communal secure postal boxes located on ground floor
- Tiled entrance hall, with carpeted upper floor, stairs and landings
- Lift to all apartments finished in stainless steel with mirror and tiled floor
- Emergency telephone to lift
- 13 amp single power sockets (for cleaning equipment)
- Lighting controlled by movement sensors
- Mains operated smoke detectors to all floors
- Residents Gymnasium
- Secure cycle storage area
- Communal satellite dish
- External lighting, wall mounted downlights to balconies and terraces
- Landscaped public areas
- Enclosed refuse and additional communal cycle storage
- Landlords external water supply
- Secure basement parking provided for apartments and penthouses
- Infrastructure to support electric car charging
- Concierge Service

Security and peace of mind

- High security apartment entrance door with multi point locking system
- Video entry phone system to communal entrance via panel in hallway
- Mains fed smoke detector with battery back up fitted to hall
- 10 Year NHBC Buildmark Scheme



Home entertainment & communications

- TV points to living and all bedrooms
- Wired for Sky Q to living area
- Communal Digital TV aerial/Satellite dish and distribution amplifier provided
- Telephone point to living room
- Cat 6 pre-wired Home Network points provided to living and principal bedroom in two bed apartments and some one bed apartments (refer to individual apartment drawings)
- USB Charging Points provided to kitchen and all bedrooms



Computer generated images are indicative only. Your attention is drawn to the fact that it may not be possible to provide the branded products as referred to in the specification. In such cases, a similar alternative will be provided. Berkeley reserves the right to make these changes as required. A number of choices and options are available to personalise your home. Choices and options are subject to timeframes, availability and change.



OUR VISION

A commitment to the future

Over the years, The Berkeley Group has won many prestigious awards for the quality, design and sustainability of its developments. Our Vision is Berkeley's plan for the business, designed to raise standards higher still. Our goal is to be a world-class company creating successful, sustainable places where people aspire to live. We take our responsibilities towards our customers, the environment, the workforce and the communities in which we work very seriously. Our plan for the business has five areas of focus: Customers, Homes, Places, Operations and Our People.

OUR VISION

To be a world-class business generating long-term value by creating successful, sustainable places where people aspire to live.

A SUPERB CUSTOMER EXPERIENCE

We aim to put customers at the heart of our decisions. Dedicated sales teams will provide exceptional service throughout the buying process, and teams will manage the customer relationship from exchange of contracts through to completion, delivery of the new home and after occupancy.

HIGH QUALITY HOMES

When you buy a new home from Berkeley you can be safe in the knowledge that it is built to very high standards of design and quality and has low environmental impact. We meet specific space standards for new homes and aim to deliver a home which has fibre broadband infrastructure.

GREAT PLACES

We seek to create beautiful, successful places characterised by the quality of their design, external spaces, transport and access to jobs and amenities. These are places where people choose to live, work and spend their time and which directly encourage people's well-being and quality of life.

EFFICIENT AND CONSIDERATE OPERATIONS

We reduce the impact of the construction process on the local community by registering all of our sites with the Considerate Constructors Scheme. We set targets to reduce water, energy and waste. We work with our supply chain to ensure high quality services and materials are consistently provided.

A COMMITMENT TO PEOPLE AND SAFETY

Safety is a high priority on all of our construction sites. We also aim to have a positive impact on society and enable young and unemployed people to get into work through our support of the Berkeley Foundation.

THE BERKELEY FOUNDATION

Berkeley takes social responsibility very seriously. In 2011 we set up The Berkeley Foundation, with the aim of supporting Britain's young people and their communities.

We do this through a number of partner charities that tackle some of the most pressing social problems affecting young people today, including homelessness and unemployment. The money raised comes part from the Berkeley Group, and also through the tireless and inventive efforts of our staff.

We have set a goal for The Berkeley Foundation to invest £10 million over the next five years to support young people and their communities. Every penny will be spent on charitable activities and worthy causes to ensure that maximum benefit is achieved.



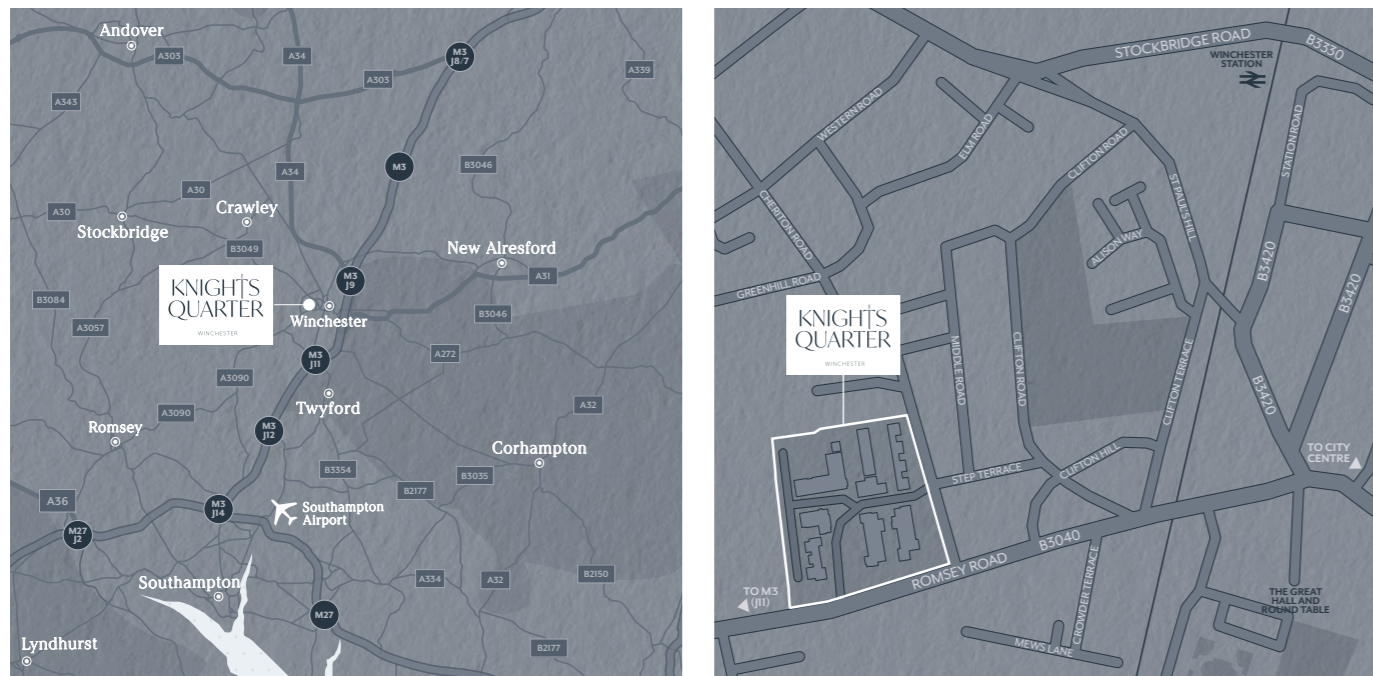
WWW.BERKELEYFOUNDATION.ORG.UK
WWW.BERKELEYGROUP.CO.UK



Get in touch

Sales Suite Open Daily 10am - 5pm
Knights Quarter, Romsey Road, Winchester SO22 5DE
Telephone: 01962 679000

knightquarter.co.uk
knightquarter@berkeleyhomes.co.uk



Maps are not to scale and show approximate locations only. The information in this document is indicative and is intended to act as a guide only as to the finished product. Accordingly, due to Berkeley Homes' policy of continuous improvement, the finished product may vary from the information provided. These particulars should not be relied upon as statements of fact or representations and applicants must satisfy themselves by inspection or otherwise as to their correctness. This information does not constitute a contract or warranty. The dimensions given on plans are subject to minor variations and are not intended to be used for carpet sizes, appliance sizes or items of furniture. Bedeviere is a marketing name and will not necessarily form part of the approved postal address. Applicants are advised to contact Berkeley Homes to ascertain the availability of any particular property.

