

THE GARDEN COLLECTION

Foxglove

HOUSE

Beaufort Park

- WELCOME TO BEAUFORT PARK Page 1
- THE GARDEN COLLECTION Page 3
- MODERN LONDON LIVING Page 4

Foxglove House

- SITE PLAN Page 8
- COMMUNITY Page 10
- RESIDENTS' FACILITIES Page 14
- LOCAL AREA Page 18
- CONNECTIVITY Page 22
- EDUCATION Page 26
- FLOORPLANS Page 31
- SPECIFICATION Page 78

St George Quality

- ST GEORGE Page 92
- OUR VISION Page 93
- MYHOME PLUS Page 94
- FOR MORE INFORMATION Page 95



Computer generated image depicts Foxglove House Internal Courtyard and is indicative only



Computer generated image depicts Beaufort Square Parkland and is indicative only

WELCOME TO BEAUFORT PARK

The story of Beaufort Park is forever evolving – from its historic origins as the site of the world's first airfield to today's vibrant neighbourhood.

Situated in North West London, Beaufort Park is well connected, just a few stops away from Hampstead and Camden.



Beaufort Square

THE GARDEN COLLECTION

Overlooking the verdant Beaufort Square and surrounded by green space, these homes have quality finishes and stylish interiors, perfect for today's Londoner.

Set in 25 acres, with a landscaped parkland at its heart, Beaufort Park is leading the regeneration within this area of North West London, delivered through the St George bold vision and world-class designs.

BEAUFORT
PARK
London NW9



THIS IS MODERN LONDON LIVING

Discover a neighbourhood designed with the modern resident in mind. These beautiful homes boast exclusive on-site facilities, speedy connections to the city centre and landscaped green spaces.

FOXGLOVE HOUSE

Foxglove House features a distinctive design, set within a green and open environment, with stunning views of the picturesque Beaufort Square to the west and the courtyard gardens to the east. With a choice between a Studio, Manhattan, 1, 2, 3 & 4 bedroom apartments and penthouses, each home is light-filled and fitted with contemporary details. Residents of Foxglove House can enjoy Beaufort Park's on-site spa, gym, indoor pool, sauna and jacuzzi, placing everything you need in one convenient neighbourhood.



Computer generated image depicts Farington House and is indicative only.

SITE PLAN

- 1 Show Apartments & Marketing Suite
- 2 Landscaped Parkland
- 3 The Spa and Gym
- 4 Jun Ming Xuan Chinese Restaurant
- 5 Italian Restaurant
- 6 Dry Cleaners
- 7 Business/Community Rooms and Estate Management Suite
- 8 Café
- 9 Tesco Express
- 10 The Beaufort Pub
- 11 Bright Horizons
- 12 Hairven Hair & Beauty
- 13 Benham & Reeves Residential Lettings
- 14 Middlesex University
- 15 Hannah London Hair and MediSpa
- 16 Dentist
- 17 Japanese Convenience Store
- 18 Areaworks
- 19 Playground



The site plan is indicative only and subject to change. In line with our policy of continuous improvement we reserve the right to alter the layout, building style, landscaping and specification at any time without notice. February 2021. All computer generated images are indicative only.



SPACE TO BREATHE

A home is more than a place to live. It should be a place to build connections. Beaufort Park has a thriving social scene. Meet friends in the coffee shop, go for food in the local restaurants or simply relax in the park. Find workspace in Areaworks, exercise in the on-site gym or unwind in The Spa.



Open spaces to enjoy



A run in the local park

Beaufort Park's beautifully landscaped grounds are a great space for unwinding.

Whether you want to take some exercise or relax in the sun, the continental-style courtyards, green space and manicured gardens offer a picturesque setting.

The park has been known to host the popular Concert in the Park, where residents meet others within the community and watch musical performances of every genre, from jazz to steel bands, funk to opera.



A place to call home
12



After-work drinks with colleagues

TIME TO UNWIND

Everyone takes their coffee differently. Our coffee shop, can deliver your choice to any Beaufort Park address. Whether you want a cappuccino in bed or a mid-morning flat white on your balcony, put in your order and enjoy it alongside a host of pastries and other snacks.

The Beaufort Pub offers a great meeting space for catching up with friends and family over a Sunday roast or going for after-work drinks with colleagues.



Relax and reset
13



Beaufort Park Spa

SPA AND SWIMMING POOL

London life can be exciting but busy. That's why Beaufort Park has an impressive on-site spa, giving you the chance to indulge and take a little downtime. Complete with a pool, jacuzzi, treatment room, sauna and steam room, The Spa truly allows you to relax and pamper yourself.



The gym



Areaworks, co-working space

STATE-OF-THE-ART FITNESS STUDIO

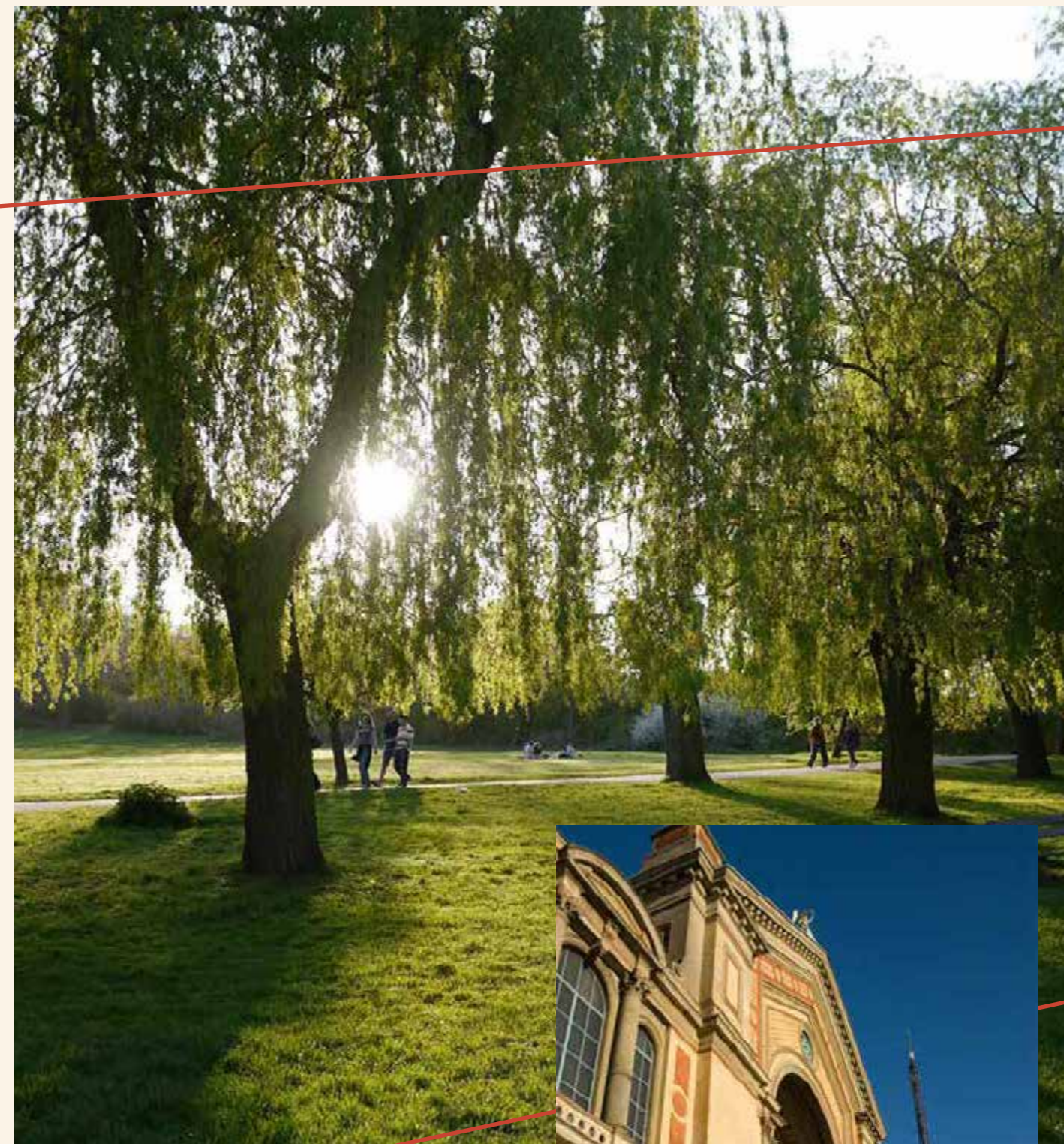
The fully-equipped gym means there's no need to travel for a workout. With new, state-of-the-art cardiovascular machines including treadmills, three different types of exercise bikes and a cross trainer, it's the perfect place to work up a sweat.

Areaworks offers a local workspace[^] where people and businesses can work and collaborate. Take advantage of the breakout spaces, private offices and coffee shop to create the working environment you need. Be inspired by regular workshops, expert talks and networking events.

[^]At an additional cost.

UNIQUE NORTH WEST LONDON

North West London offers a unique combination – a welcoming and intimate village atmosphere with all the buzz of the City.



Hampstead Heath

This area's particular charm makes it well suited to every kind of resident – both locals and newcomers, those starting out and those settling down.

Spend a morning in fashionable Hampstead. Visit its varied boutique shops and chic coffee shops. Explore the wildlife, recreation and stunning views of Hampstead Heath. Discover the colourful narrowboats of Regent's Canal and the varied markets of Camden. And in the evening, head to a gig at Alexandra Palace.



Alexandra Palace

THE CAPITAL ON YOUR DOORSTEP

Beaufort Park is a short journey from the vibrant heart of London city centre. Stay close to the nightlife, shopping, business and entertainment at the capital’s heart. At once modern and historic, local and international, London offers something for everyone.



Streets of North London

CULTURE

From intimate clubs to concert venues like the O2 Arena and the spectacular Royal Albert Hall, London hosts evening entertainment for every taste.

DINING

From the boutique restaurants of Soho and Fitzrovia to the trendy eateries of the east, London’s gastronomic delights are easily reached from Beaufort Park.

SHOPPING

Whether you prefer big-name brands or high-street fashion, London is the place to shop. Jump on the Northern line to reach both hidden treasures and old favourites such as Harrods or take a short five-minute drive to Brent Cross for some retail therapy.

SPECTACLE

The capital is renowned for its exciting architecture and scenery, modern and classical. Among these are London’s nine Royal Parks and the endlessly changing vista of the River Thames.



Bang Bang Oriental

TASTE OF THE EAST

Bang Bang Oriental Foodhall, London’s newest and largest Asian food hall, is located a short distance from Beaufort Park.

Bang Bang Oriental Foodhall is home to 33 individual pan-Asian food traders serving everything from sushi to laksa, Thai curries to steamed buns. This is the perfect spot to spend a weekend afternoon with friends and family.



Bang Bang Oriental

Noodles in the food hall



King's Cross St Pancras

KING'S CROSS

A short tube ride away from Beaufort Park, King's Cross is easily accessed via the Northern line. Its proximity places countless job opportunities moments away.



King's Cross Station

LONDON'S NEW TECH HUB

Google have set up new headquarters in King's Cross, welcoming 7,000 new professionals. Other nearby creative and media businesses include Facebook, Universal Music, YouTube and Nike.



STAY CONNECTED

London’s transport network is fast and reliable, placing the city and beyond right on your doorstep.



Less than a mile from Beaufort Park, the Northern line runs through Colindale tube station, transporting you to King’s Cross St Pancras in 21 minutes and Leicester Square in 27 minutes. The 24-hour weekend tube makes commuting and going out much easier.

For travelling outside of London, Hendon Central connects to the National Rail network, while the Eurostar can be boarded from King’s Cross St. Pancras. Additionally, bus connections and the A1, M1 and M25 are just moments away.

Colindale Station ⊖	Beaufort Park RAF Museum Middlesex University Bang Bang Oriental Foodhall
Hendon Central 3 mins ⊖	Mainline services to Central London and London Luton Airport
Brent Cross 5 mins ⊖	Brent Cross Shopping Centre
Hampstead 12 mins ⊖	Hampstead Village and Hampstead Heath
Camden Town 19 mins ⊖	Camden Market ZSL London Zoo The Roundhouse Theatre
King’s Cross St. Pancras 21 mins ⊖ ⊕ ⊗ ⊙ ⊕ ⊕ ⊕ ⊕	Google YouTube Facebook British Library University of the Arts London Eurostar Paris – 2 hours 25 minutes
Oxford Circus 25 mins ⊕ ⊕ ⊕	Hyde Park Buckingham Palace The British Museum
Leicester Square 27 mins ⊕ ⊕	West End Theatre District Covent Garden Chinatown Bond Street

Timings are approximate. Source www.tfl.gov.uk



* Map representative and not to scale

OUTSTANDING EDUCATION

Beaufort Park is within easy reach of many of London's finest schools, with enough choice for everyone. And from UCL to Imperial College, London's universities are among the finest in the world.



Studying at Areaworks

PRIMARY SCHOOLS

- 1 Goldbeaters Primary School
- 2 St Joseph's Catholic Primary School
- 3 The Hyde School
- 4 Barnfield Primary School
- 5 Orion Primary School

SECONDARY SCHOOLS

- 1 Hasmonean High School
- 2 Hendon School
- 3 Canons High School

PRIVATE SCHOOLS

- 1 The Haberdashers' Aske's Boys' School (UK top 10*)
- 2 The Haberdashers' Aske's School for Girls (UK top 10*)
- 3 Mill Hill School
- 4 Harrow School

LONDON UNIVERSITIES

- 1 Middlesex University
- 2 UCL – University College London
- 3 Imperial College London
- 4 Central Saint Martins, University of the Arts London
- 5 CASS Business School, City, University of London



1, 2, 3 & 4 BEDROOM APARTMENTS
AND PENTHOUSES

The Studio, Manhattan, 1, 2, 3 & 4
bedroom apartments have been designed
for modern living, with light-filled spaces
and contemporary interiors.



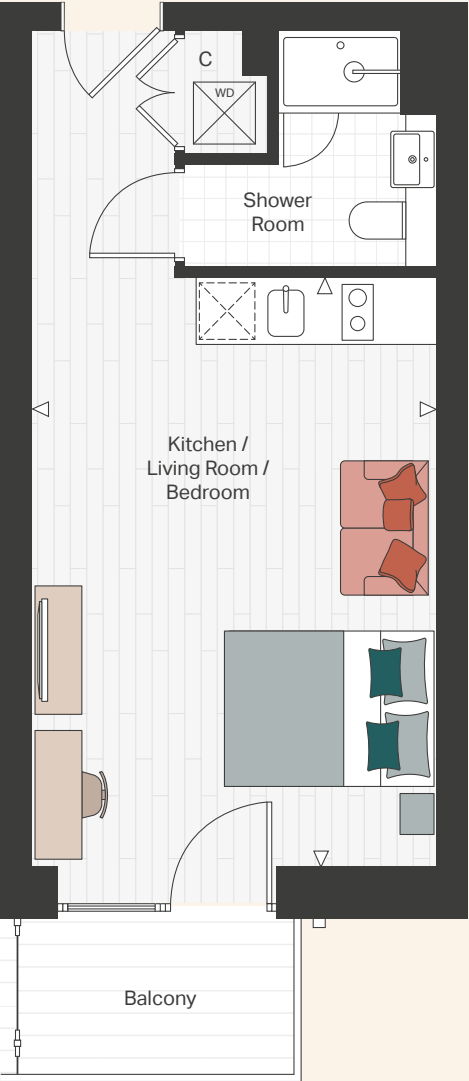
THE AVIATOR SPECIFICATION

The Aviator Specification is more than a design statement. It’s an aesthetic that draws on the area’s aviation history, through oak detailing and natural tones, while celebrating Beaufort Park’s classic quality.

Studio Floorplan

FROM 323 SQ FT TO 389 SQ FT

The design of the studio apartment has been crafted with careful consideration to deliver efficient use of space and a light, airy feeling. A wealth of natural light floods the studios from the balcony / terrace that comes available with all apartments.



2648 – Studio	32.5 sq m	350 sq ft
Kitchen / Living Room / Bedroom	5.76m x 3.95m	18' 11" x 13' 0"
Balcony	4.1 sq m	44 sq ft

Manhattan

FROM 474 SQ FT TO 478 SQ FT

The one-bedroom Manhattan apartment has been designed as an open-plan layout to maximise the space available, creating flexible living. The style statement continues through the sliding doors and into the double bedroom which comes with fitted wardrobes.



2650 – Manhattan	44.0 sq m	474 sq ft
Kitchen / Dining / Living Room	8.24m x 2.85m	27' 0" x 9' 4"
Bedroom	3.24m x 2.76m	10' 8" x 9' 1"
Balcony	4.9 sq m	53 sq ft

1 Bedroom

FROM 538 SQ FT TO 563 SQ FT

The spacious open-plan kitchen and living area are bathed in natural light from the windows and the elegant balcony leading off the living room. Stylish and meticulously finished, the shower room and separate well-proportioned bedroom with integrated wardrobes form the perfect place to relax.



2684 – 1 Bedroom	51.1 sq m	550 sq ft
Living Space / Kitchen	6.94m x 3.20m	22' 9" x 10' 6"
Bedroom	4.38m x 2.91m	14' 4" x 9' 7"
Balcony	5.9 sq m	64 sq ft

2 Bedroom

FROM 753 SQ FT TO 853 SQ FT

Beautiful proportions and flexibility provide the perfect setting for entertainment and relaxation in this two-bedroom apartment. Both bathrooms feature high-quality fixtures and fittings and a modern colour palette.



2667 – 2 Bedroom	70.0 sq m	753 sq ft
Kitchen / Dining / Living Room	8.16m x 3.16m	26' 9" x 10' 4"
Master Bedroom	3.00m x 2.76m	9' 10" x 9' 1"
Bedroom 2	4.55m x 2.75m	14' 11" x 9' 0"
Balcony	7.3 sq m	78 sq ft

3 Bedroom

FROM 1,036 SQ FT TO 1,361 SQ FT

This three-bedroom apartment is the epitome of modern open-plan living. The master bedroom benefits from a fitted dressing area adjacent to the ensuite bathroom. The elegant bathroom uses natural textures in a palette of warm greys to provide a contemporary and modern environment.

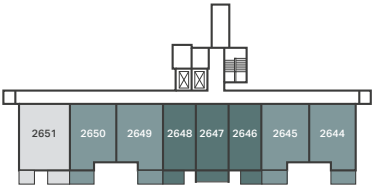


2717 – 3 Bedroom ELITE	96.4 sq m	1,038 sq ft
Kitchen / Dining / Living Room	8.14m x 3.52m	26' 8" x 11' 7"
Master Bedroom	3.33m x 2.75m	10' 11" x 9' 0"
Bedroom 2	3.23m x 2.79m	10' 7" x 9' 2"
Bedroom 3	3.23m x 2.76m	10' 7" x 9' 1"
Balcony	12.4 sq m	133 sq ft

GROUND FLOOR



FIRST FLOOR



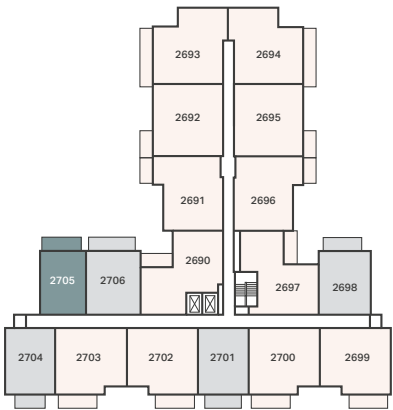
SECOND FLOOR



THIRD FLOOR



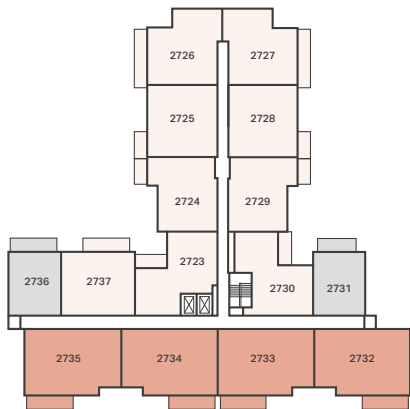
FOURTH FLOOR



FIFTH FLOOR



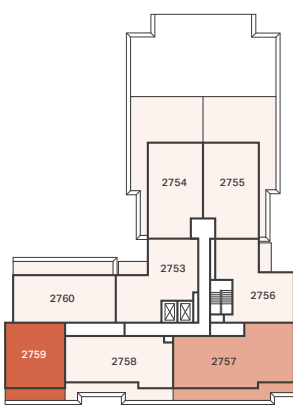
SIXTH FLOOR



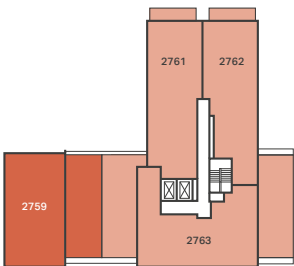
SEVENTH FLOOR



EIGHTH FLOOR



NINTH FLOOR



APARTMENT KEY

- Studio Apartment
- Manhattan 1 Bedroom Apartment
- 1 Bedroom Apartment
- 2 Bedroom Apartment
- 3 Bedroom Apartment
- 4 Bedroom Penthouse

ACCOMMODATION FINDER

Apt. No.	Floor	Bedrooms	Type
2637	G	Studio	
2643	G	Studio	
2646	1	Studio	
2647	1	Studio	
2648	1	Studio	
2659	2	Studio	
2669	2	Studio	

2638	G	Manhattan	
2639	G	Manhattan	
2641	G	Manhattan	
2642	G	Manhattan	
2644	1	Manhattan	
2645	1	Manhattan	
2649	1	Manhattan	
2650	1	Manhattan	
2688	3	Manhattan	
2705	4	Manhattan	

2640	G	1 Bedroom	
2651	1	1 Bedroom	
2654	2	1 Bedroom	
2655	2	1 Bedroom	
2656	2	1 Bedroom	
2657	2	1 Bedroom	
2658	2	1 Bedroom	
2662	2	1 Bedroom	
2665	2	1 Bedroom	
2668	2	1 Bedroom	
2670	2	1 Bedroom	
2673	3	1 Bedroom	
2674	3	1 Bedroom	
2675	3	1 Bedroom	
2676	3	1 Bedroom	
2677	3	1 Bedroom	
2678	3	1 Bedroom	
2681	3	1 Bedroom	
2684	3	1 Bedroom	
2687	3	1 Bedroom	
2689	3	1 Bedroom	
2698	4	1 Bedroom	
2701	4	1 Bedroom	
2704	4	1 Bedroom	
2706	4	1 Bedroom	
2715	5	1 Bedroom	
2720	5	1 Bedroom	Elite
2721	5	1 Bedroom	
2731	6	1 Bedroom	Elite
2736	6	1 Bedroom	Elite
2746	7	1 Bedroom	Elite
2751	7	1 Bedroom	Elite

Apt. No.	Floor	Bedrooms	Type
2652	2	2 Bedroom	
2653	2	2 Bedroom	
2660	2	2 Bedroom	
2661	2	2 Bedroom	
2663	2	2 Bedroom	
2664	2	2 Bedroom	
2666	2	2 Bedroom	
2667	2	2 Bedroom	
2671	3	2 Bedroom	
2672	3	2 Bedroom	
2679	3	2 Bedroom	
2686	3	2 Bedroom	
2690	4	2 Bedroom	
2691	4	2 Bedroom	
2692	4	2 Bedroom	
2693	4	2 Bedroom	
2694	4	2 Bedroom	
2695	4	2 Bedroom	
2696	4	2 Bedroom	
2697	4	2 Bedroom	
2699	4	2 Bedroom	
2700	4	2 Bedroom	
2702	4	2 Bedroom	
2703	4	2 Bedroom	
2707	5	2 Bedroom	
2708	5	2 Bedroom	
2709	5	2 Bedroom	
2710	5	2 Bedroom	
2711	5	2 Bedroom	
2712	5	2 Bedroom	
2713	5	2 Bedroom	
2714	5	2 Bedroom	
2716	5	2 Bedroom	Elite
2719	5	2 Bedroom	Elite
2722	5	2 Bedroom	
2723	6	2 Bedroom	Elite
2724	6	2 Bedroom	Elite
2725	6	2 Bedroom	Elite
2726	6	2 Bedroom	Elite
2727	6	2 Bedroom	Elite
2728	6	2 Bedroom	Elite
2729	6	2 Bedroom	Elite
2730	6	2 Bedroom	Elite
2737	6	2 Bedroom	Elite
2738	7	2 Bedroom	Elite
2739	7	2 Bedroom	Elite
2740	7	2 Bedroom	Elite
2741	7	2 Bedroom	Elite
2742	7	2 Bedroom	Elite
2743	7	2 Bedroom	Elite
2744	7	2 Bedroom	Elite

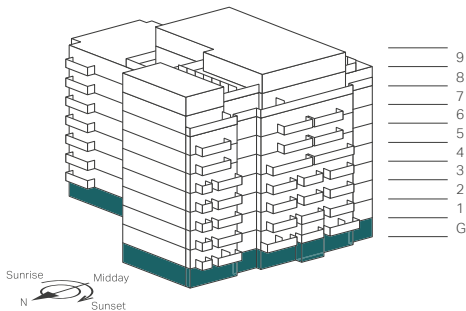
Apt. No.	Floor	Bedrooms	Type
2745	7	2 Bedroom	Elite
2752	7	2 Bedroom	Elite
2753	8	2 Bedroom	Elite
2754	8	2 Bedroom	Elite
2755	8	2 Bedroom	Elite
2756	8	2 Bedroom	Elite
2758	8	2 Bedroom	Elite
2760	8	2 Bedroom	Elite

2717	5	3 Bedroom	Elite
2718	5	3 Bedroom	Elite
2732	6	3 Bedroom	Elite
2733	6	3 Bedroom	Elite
2734	6	3 Bedroom	Elite
2735	6	3 Bedroom	Elite
2747	7	3 Bedroom	Premier
2748	7	3 Bedroom	Premier
2749	7	3 Bedroom	Premier
2750	7	3 Bedroom	Premier
2757	8	3 Bedroom	Premier
2761	9	3 Bedroom	Elite
2762	9	3 Bedroom	Elite
2763	9	3 Bedroom	Premier

2759	8&9	4 Bedroom	Premier
------	-----	-----------	---------



Ground Floor

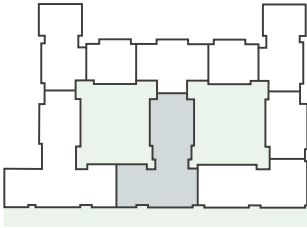


● 2637 – Studio	32.5 sq m	350 sq ft
Kitchen / Living Room / Bedroom	5.76m x 3.95m	18' 11" x 13' 0"
Terrace	7.8 sq m	84 sq ft
● 2638 – Manhattan	44.4 sq m	478 sq ft
Living Space / Kitchen	8.24m x 2.90m	27' 0" x 9' 6"
Bedroom	3.24m x 2.76m	10' 8" x 9' 1"
Terrace	14.1 sq m	152 sq ft
● 2639 – Manhattan	44.0 sq m	474 sq ft
Living Space / Kitchen	8.24m x 2.85m	27' 0" x 9' 4"
Bedroom	3.24m x 2.76m	10' 8" x 9' 1"
Terrace	14.0 sq m	151 sq ft
● 2640 – 1 Bedroom	50.1 sq m	539 sq ft
Living Space / Kitchen	6.74m x 3.28m	22' 1" x 10' 9"
Bedroom	4.29m x 2.75m	14' 1" x 9' 0"
Terrace	12.3 sq m	132 sq ft
● 2641 – Manhattan	43.9 sq m	473 sq ft
Living Space / Kitchen	8.24m x 2.70m	27' 0" x 8' 10"
Bedroom	3.25m x 2.76m	10' 8" x 9' 1"
Terrace	13.9 sq m	150 sq ft
● 2642 – Manhattan	44.4 sq m	478 sq ft
Living Space / Kitchen	8.24m x 2.90m	27' 0" x 9' 6"
Bedroom	3.24m x 2.76m	10' 8" x 9' 1"
Terrace	14.2 sq m	153 sq ft
● 2643 – Studio	32.5 sq m	350 sq ft
Kitchen / Living Room / Bedroom	5.76m x 3.95m	18' 11" x 13' 0"
Terrace	7.8 sq m	84 sq ft

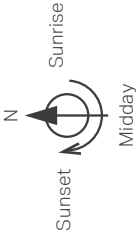
APARTMENT KEY

- Studio Apartment
- Manhattan 1 Bedroom Apartment
- 1 Bedroom Apartment

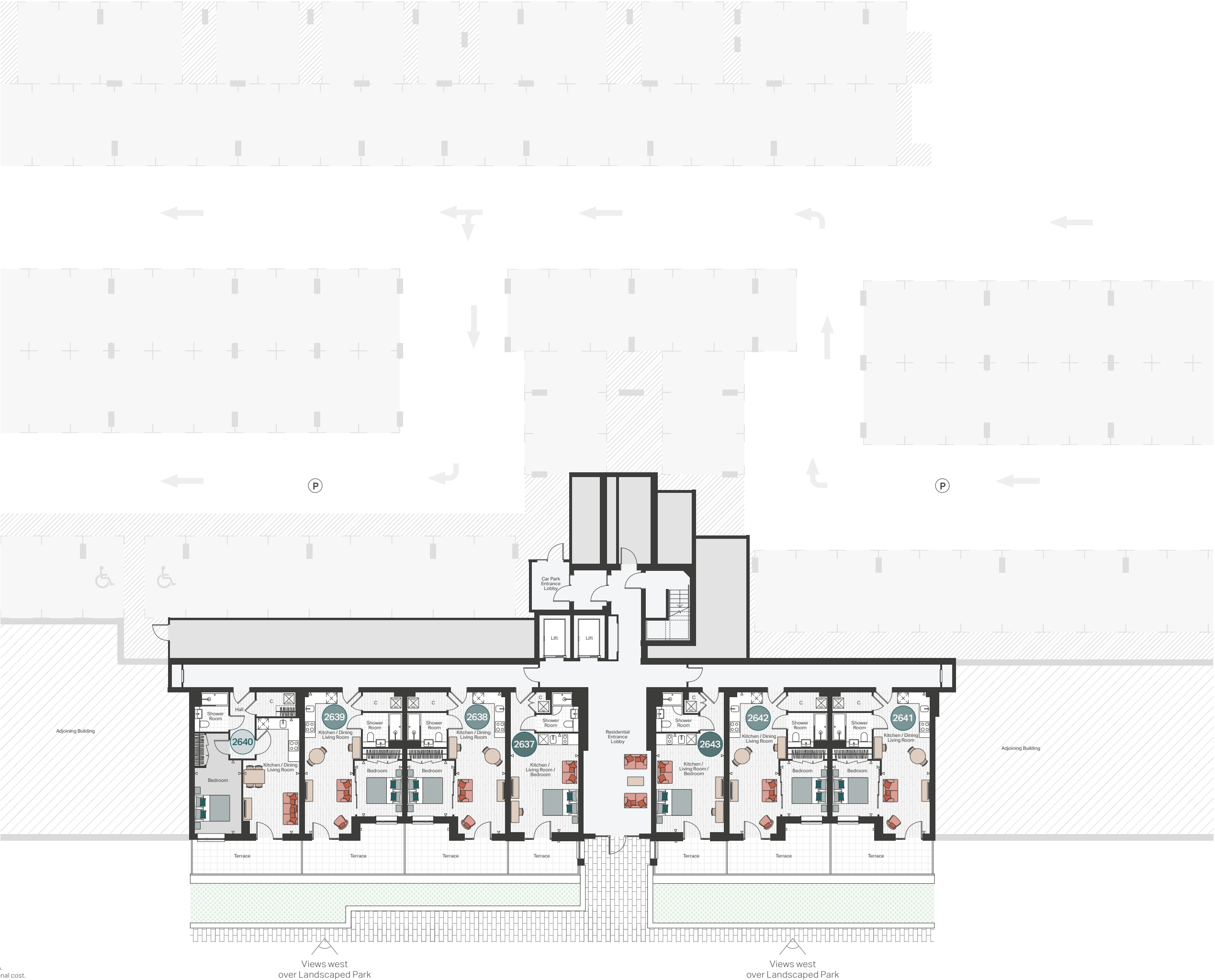
FOXGLOVE HOUSE



- 2 Ring Hob
- 4 Ring Hob
- Fridge / Freezer
- Hot Water Cylinder
- Hot Water Cylinder 300L
- Washer / Dryer
- Oven
- Below Counter Fridge
- C Cupboard



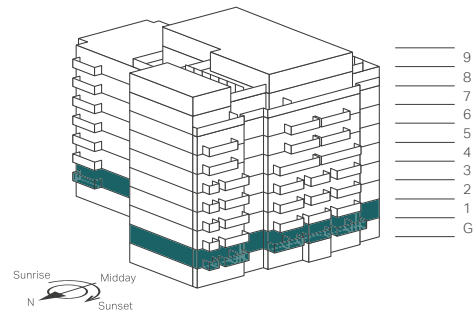
Floorplans shown for Foxglove Apartments are approximate measurements only. Exact layout and sizes may vary. All measurements may vary within a tolerance of 5%. Car park shown for illustrative purposes only. Car parking available subject to additional cost.





Computer generated image of Farington House is indicative only

First Floor

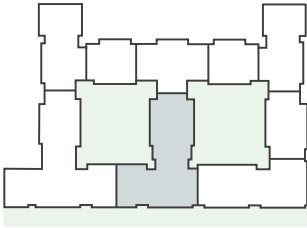


● 2644 – Manhattan	43.9 sq m	473 sq ft
Living Space / Kitchen	8.24m x 2.70m	27' 0" x 8' 10"
Bedroom	3.25m x 2.76m	10' 8" x 9' 1"
Balcony	4.9 sq m	53 sq ft
● 2645 – Manhattan	44.4 sq m	478 sq ft
Living Space / Kitchen	8.24m x 2.90m	27' 0" x 9' 6"
Bedroom	3.24m x 2.76m	10' 8" x 9' 1"
Balcony	5.0 sq m	54 sq ft
● 2646 – Studio	32.5 sq m	350 sq ft
Kitchen / Living Room / Bedroom	5.76m x 3.95m	18' 11" x 13' 0"
Balcony	4.1 sq m	44 sq ft
● 2647 – Studio	30.0 sq m	323 sq ft
Kitchen / Living Room / Bedroom	5.15m x 3.98m	16' 11" x 13' 1"
Terrace	8.3 sq m	89 sq ft
● 2648 – Studio	32.5 sq m	350 sq ft
Kitchen / Living Room / Bedroom	5.76m x 3.95m	18' 11" x 13' 0"
Balcony	4.1 sq m	44 sq ft
● 2649 – Manhattan	44.4 sq m	478 sq ft
Living Space / Kitchen	8.24m x 2.90m	27' 0" x 9' 6"
Bedroom	3.24m x 2.76m	10' 8" x 9' 1"
Balcony	5.0 sq m	54 sq ft
● 2650 – Manhattan	44.0 sq m	474 sq ft
Living Space / Kitchen	8.24m x 2.85m	27' 0" x 9' 4"
Bedroom	3.24m x 2.76m	10' 8" x 9' 1"
Balcony	4.9 sq m	53 sq ft
● 2651 – 1 Bedroom	50.1 sq m	539 sq ft
Living Space / Kitchen	6.74m x 3.28m	22' 1" x 10' 9"
Bedroom	4.29m x 2.75m	14' 1" x 9' 0"
Balcony	7.1 sq m	77 sq ft

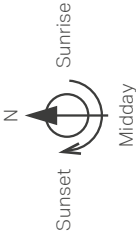
APARTMENT KEY

- Studio Apartment
- Manhattan 1 Bedroom Apartment
- 1 Bedroom Apartment

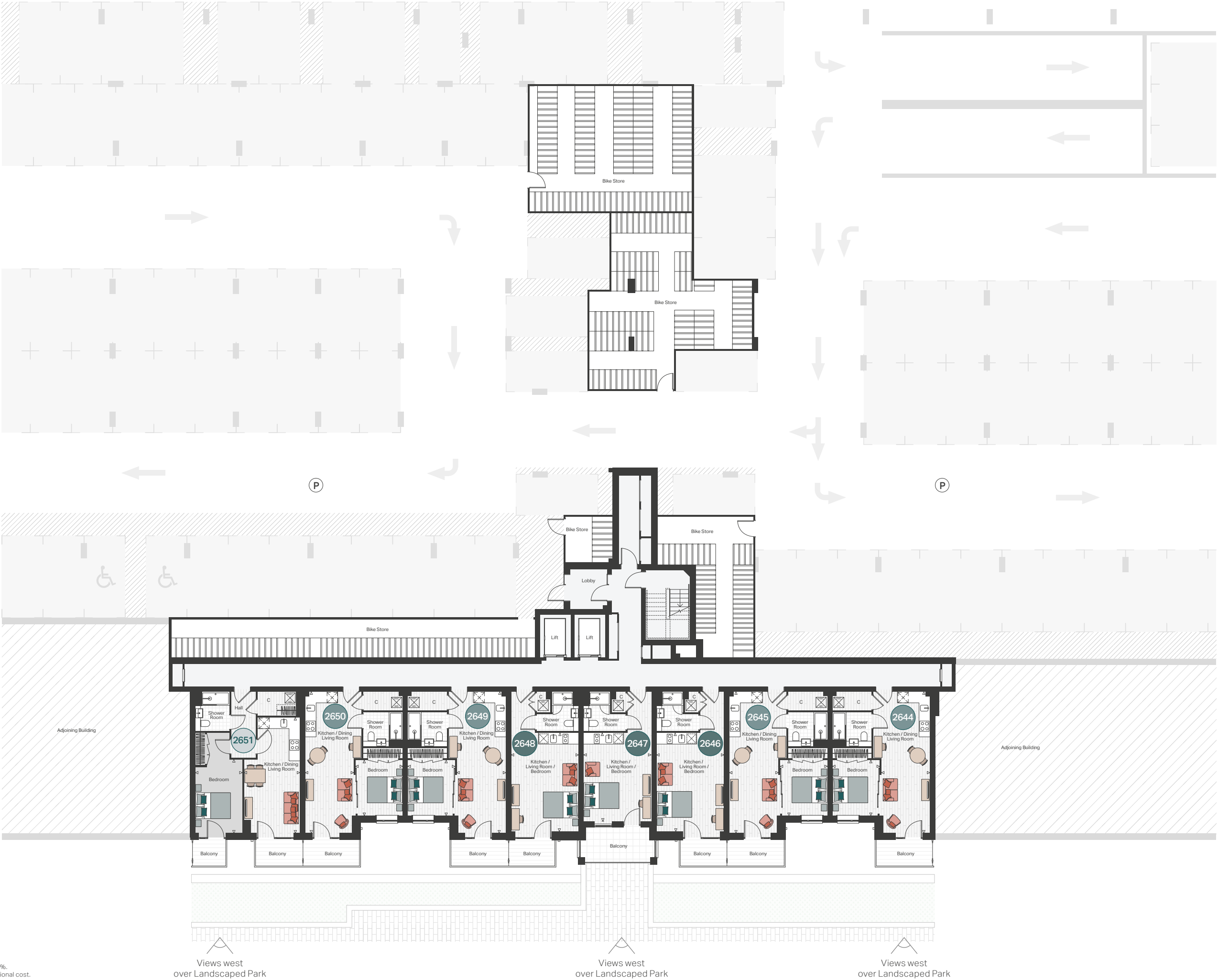
FOXGLOVE HOUSE



- 2 Ring Hob
- 4 Ring Hob
- Fridge / Freezer
- Hot Water Cylinder
- Hot Water Cylinder 300L
- Washer / Dryer
- Oven
- Below Counter Fridge
- C Cupboard

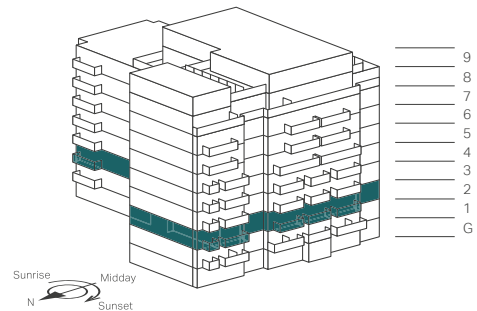


Floorplans shown for Foxglove Apartments are approximate measurements only. Exact layout and sizes may vary. All measurements may vary within a tolerance of 5%. Car park shown for illustrative purposes only. Car parking available subject to additional cost.





Second Floor



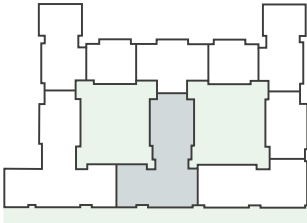
2652 – 2 Bedroom	74.2 sq m	799 sq ft
Living Space / Kitchen	5.72m x 4.12m	18' 8" x 13' 6"
Master Bedroom	3.66m x 2.75m	12' 0" x 9' 0"
Bedroom 2	3.65m x 2.77m	12' 0" x 9' 1"
Terrace	17.6 sq m	189 sq ft
2653 – 2 Bedroom	70.1 sq m	755 sq ft
Living Space / Kitchen	8.31m x 3.42m	27' 3" x 11' 3"
Master Bedroom	3.00m x 2.75m	9' 10" x 9' 0"
Bedroom 2	3.62m x 2.75m	11' 11" x 9' 0"
Terrace	28.6 sq m	308 sq ft
2654 – 1 Bedroom	50.0 sq m	538 sq ft
Living Space / Kitchen	7.41m x 3.03m	24' 4" x 9' 11"
Bedroom	4.62m x 2.75m	15' 2" x 9' 0"
Terrace	16.1 sq m	173 sq ft
2655 – 1 Bedroom	50.0 sq m	538 sq ft
Living Space / Kitchen	7.41m x 3.03m	24' 4" x 9' 11"
Bedroom	4.62m x 2.75m	15' 2" x 9' 0"
Terrace	13.7 sq m	147 sq ft
2656 – 1 Bedroom	50.1 sq m	539 sq ft
Living Space / Kitchen	6.81m x 4.03m	22' 4" x 13' 3"
Bedroom	3.16m x 2.75m	10' 4" x 9' 0"
Terrace	24.2 sq m	260 sq ft
2657 – 1 Bedroom	50.1 sq m	539 sq ft
Living Space / Kitchen	6.81m x 4.03m	22' 4" x 13' 3"
Bedroom	3.16m x 2.75m	10' 4" x 9' 0"
Terrace	24.2 sq m	260 sq ft
2658 – 1 Bedroom	50.0 sq m	538 sq ft
Living Space / Kitchen	7.41m x 3.03m	24' 4" x 9' 11"
Bedroom	4.62m x 2.75m	15' 2" x 9' 0"
Terrace	13.0 sq m	140 sq ft
2659 – Studio	36.1 sq m	389 sq ft
Kitchen / Living Room / Bedroom	5.21m x 4.25m	17' 1" x 13' 11"
Terrace	10.9 sq m	117 sq ft
2660 – 2 Bedroom	70.1 sq m	755 sq ft
Living Space / Kitchen	8.31m x 3.42m	27' 3" x 11' 3"
Master Bedroom	3.00m x 2.75m	9' 10" x 9' 0"
Bedroom 2	3.62m x 2.75m	11' 11" x 9' 0"
Terrace	24.4 sq m	263 sq ft
2661 – 2 Bedroom	73.2 sq m	788 sq ft
Living Space / Kitchen	5.34m x 5.04m	17' 6" x 16' 6"
Master Bedroom	4.39m x 2.85m	14' 5" x 9' 4"
Bedroom 2	3.44m x 2.89m	11' 3" x 9' 6"
Terrace	16.6 sq m	179 sq ft

2662 – 1 Bedroom	50.0 sq m	538 sq ft
Living Space / Kitchen	5.67m x 3.35m	18' 7" x 11' 0"
Bedroom	3.57m x 2.90m	11' 9" x 9' 6"
Terrace	14.0 sq m	151 sq ft
2663 – 2 Bedroom	70.0 sq m	753 sq ft
Living Space / Kitchen	8.14m x 3.16m	26' 8" x 10' 4"
Master Bedroom	3.00m x 2.76m	9' 10" x 9' 1"
Bedroom 2	4.54m x 2.75m	14' 11" x 9' 0"
Balcony	7.3 sq m	78 sq ft
2664 – 2 Bedroom	70.0 sq m	753 sq ft
Living Space / Kitchen	8.14m x 3.16m	26' 8" x 10' 4"
Master Bedroom	3.00m x 2.76m	9' 10" x 9' 1"
Bedroom 2	4.54m x 2.75m	14' 11" x 9' 0"
Balcony	7.3 sq m	78 sq ft
2665 – 1 Bedroom	51.1 sq m	550 sq ft
Living Space / Kitchen	6.94m x 3.20m	22' 9" x 10' 6"
Bedroom	4.38m x 2.91m	14' 4" x 9' 7"
Terrace	3.9 sq m	42 sq ft
2666 – 2 Bedroom	70.0 sq m	753 sq ft
Living Space / Kitchen	8.16m x 3.16m	26' 9" x 10' 4"
Master Bedroom	3.00m x 2.75m	9' 10" x 9' 0"
Bedroom 2	4.55m x 2.75m	14' 11" x 9' 0"
Balcony	7.3 sq m	78 sq ft
2667 – 2 Bedroom	70.0 sq m	753 sq ft
Living Space / Kitchen	8.16m x 3.16m	26' 9" x 10' 4"
Master Bedroom	3.00m x 2.75m	9' 10" x 9' 0"
Bedroom 2	4.55m x 2.75m	14' 11" x 9' 0"
Balcony	7.3 sq m	78 sq ft
2668 – 1 Bedroom	51.1 sq m	550 sq ft
Living Space / Kitchen	6.79m x 3.16m	22' 3" x 10' 4"
Bedroom	5.15m x 2.95m	16' 11" x 9' 8"
Balcony	5.9 sq m	64 sq ft
2669 – Studio	31.4 sq m	338 sq ft
Kitchen / Living Room / Bedroom	5.47m x 3.99m	17' 11" x 13' 1"
Terrace	8.3 sq m	89 sq ft
2670 – 1 Bedroom	52.3 sq m	563 sq ft
Living Space / Kitchen	7.87m x 3.58m	25' 10" x 11' 9"
Bedroom	4.22m x 3.00m	13' 10" x 9' 10"
Terrace	15.1 sq m	163 sq ft

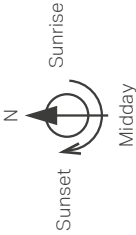
APARTMENT KEY

- Studio Apartment
- 1 Bedroom Apartment
- 2 Bedroom Apartment

FOXGLOVE HOUSE



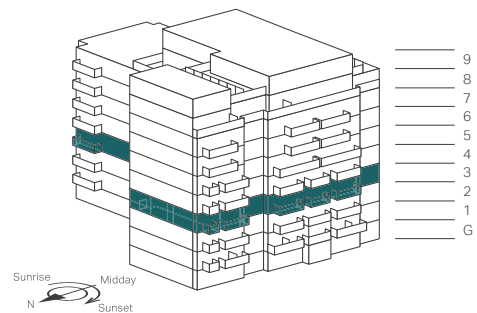
- 2 Ring Hob
- 4 Ring Hob
- Fridge / Freezer
- Hot Water Cylinder
- Hot Water Cylinder 300L
- Washer / Dryer
- Oven
- Below Counter Fridge
- C Cupboard



Floorplans shown for Foxglove Apartments are approximate measurements only. Exact layout and sizes may vary. All measurements may vary within a tolerance of 5%. Car park shown for illustrative purposes only. Car parking available subject to additional cost.



Third Floor



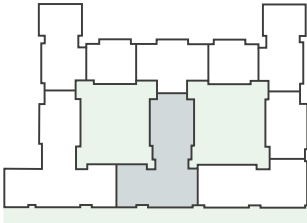
2671 – 2 Bedroom	74.2 sq m	799 sq ft
Living Space / Kitchen	5.72m x 4.12m	18’ 8” x 13’ 6”
Master Bedroom	3.66m x 2.75m	12’ 0” x 9’ 0”
Bedroom 2	3.65m x 2.77m	12’ 0” x 9’ 1”
Balcony	5.2 sq m	56 sq ft
2672 – 2 Bedroom	70.1 sq m	755 sq ft
Living Space / Kitchen	8.31m x 3.42m	27’ 3” x 11’ 3”
Master Bedroom	3.00m x 2.75m	9’ 10” x 9’ 0”
Bedroom 2	3.62m x 2.75m	11’ 11” x 9’ 0”
Balcony	4.6 sq m	50 sq ft
2673 – 1 Bedroom	50.0 sq m	538 sq ft
Living Space / Kitchen	7.41m x 3.03m	24’ 4” x 9’ 11”
Bedroom	4.52m x 2.75m	14’ 10” x 9’ 0”
Balcony	5.4 sq m	58 sq ft
2674 – 1 Bedroom	50.0 sq m	538 sq ft
Living Space / Kitchen	7.41m x 3.03m	24’ 4” x 9’ 11”
Bedroom	4.62m x 2.75m	15’ 2” x 9’ 0”
Balcony	5.9 sq m	64 sq ft
2675 – 1 Bedroom	50.1 sq m	539 sq ft
Living Space / Kitchen	6.81m x 4.03m	22’ 4” x 13’ 3”
Bedroom	3.16m x 2.75m	10’ 4” x 9’ 0”
Balcony	5.3 sq m	57 sq ft
2676 – 1 Bedroom	50.1 sq m	539 sq ft
Living Space / Kitchen	6.81m x 4.03m	22’ 4” x 13’ 3”
Bedroom	3.16m x 2.75m	10’ 4” x 9’ 0”
Balcony	5.3 sq m	57 sq ft
2677 – 1 Bedroom	50.0 sq m	538 sq ft
Living Space / Kitchen	7.41m x 3.03m	24’ 4” x 9’ 11”
Bedroom	4.62m x 2.75m	15’ 2” x 9’ 0”
Balcony	5.9 sq m	63 sq ft
2678 – 1 Bedroom	50.0 sq m	538 sq ft
Living Space / Kitchen	7.41m x 3.03m	24’ 4” x 9’ 11”
Bedroom	4.52m x 2.75m	14’ 10” x 9’ 0”
Balcony	5.0 sq m	54 sq ft
2679 – 2 Bedroom	70.1 sq m	755 sq ft
Living Space / Kitchen	8.31m x 3.42m	27’ 3” x 11’ 3”
Master Bedroom	3.00m x 2.75m	9’ 10” x 9’ 0”
Bedroom 2	3.62m x 2.75m	11’ 11” x 9’ 0”
Balcony	4.9 sq m	53 sq ft
2680 – 2 Bedroom	73.2 sq m	788 sq ft
Living Space / Kitchen	5.34m x 5.04m	17’ 6” x 16’ 6”
Master Bedroom	4.39m x 2.85m	14’ 5” x 9’ 4”
Bedroom 2	3.44m x 2.89m	11’ 3” x 9’ 6”
Balcony	5.9 sq m	63 sq ft

2681 – 1 Bedroom	50.0 sq m	538 sq ft
Living Space / Kitchen	5.67m x 3.35m	18’ 7” x 11’ 0”
Bedroom	3.57m x 2.90m	11’ 9” x 9’ 6”
Balcony	7.3 sq m	78 sq ft
2682 – 2 Bedroom	70.0 sq m	753 sq ft
Living Space / Kitchen	8.14m x 3.16m	26’ 8” x 10’ 4”
Master Bedroom	3.00m x 2.76m	9’ 10” x 9’ 1”
Bedroom 2	4.54m x 2.75m	14’ 11” x 9’ 0”
Balcony	7.3 sq m	78 sq ft
2683 – 2 Bedroom	70.0 sq m	753 sq ft
Living Space / Kitchen	8.14m x 3.16m	26’ 8” x 10’ 4”
Master Bedroom	3.00m x 2.76m	9’ 10” x 9’ 1”
Bedroom 2	4.54m x 2.75m	14’ 11” x 9’ 0”
Balcony	7.3 sq m	78 sq ft
2684 – 1 Bedroom	51.1 sq m	550 sq ft
Living Space / Kitchen	6.94m x 3.20m	22’ 9” x 10’ 6”
Bedroom	4.38m x 2.91m	14’ 4” x 9’ 7”
Balcony	5.9 sq m	64 sq ft
2685 – 2 Bedroom	70.0 sq m	753 sq ft
Living Space / Kitchen	8.16m x 3.16m	26’ 9” x 10’ 4”
Master Bedroom	3.00m x 2.75m	9’ 10” x 9’ 0”
Bedroom 2	4.55m x 2.75m	14’ 11” x 9’ 0”
Balcony	7.3 sq m	78 sq ft
2686 – 2 Bedroom	70.0 sq m	753 sq ft
Living Space / Kitchen	8.16m x 3.16m	26’ 9” x 10’ 4”
Master Bedroom	3.00m x 2.75m	9’ 10” x 9’ 0”
Bedroom 2	4.55m x 2.75m	14’ 11” x 9’ 0”
Balcony	7.3 sq m	78 sq ft
2687 – 1 Bedroom	51.1 sq m	550 sq ft
Living Space / Kitchen	6.79m x 3.16m	22’ 3” x 10’ 4”
Bedroom	5.15m x 2.95m	16’ 11” x 9’ 8”
Balcony	5.9 sq m	64 sq ft
2688 – Manhattan	44.2 sq m	476 sq ft
Living Space / Kitchen	7.87m x 2.76m	25’ 10” x 9’ 1”
Bedroom	3.88m x 2.75m	12’ 9” x 9’ 0”
Balcony	7.3 sq m	78 sq ft
2689 – 1 Bedroom	52.3 sq m	563 sq ft
Living Space / Kitchen	7.87m x 3.58m	25’ 10” x 11’ 9”
Bedroom	4.22m x 3.00m	13’ 10” x 9’ 10”
Balcony	8.8 sq m	94 sq ft

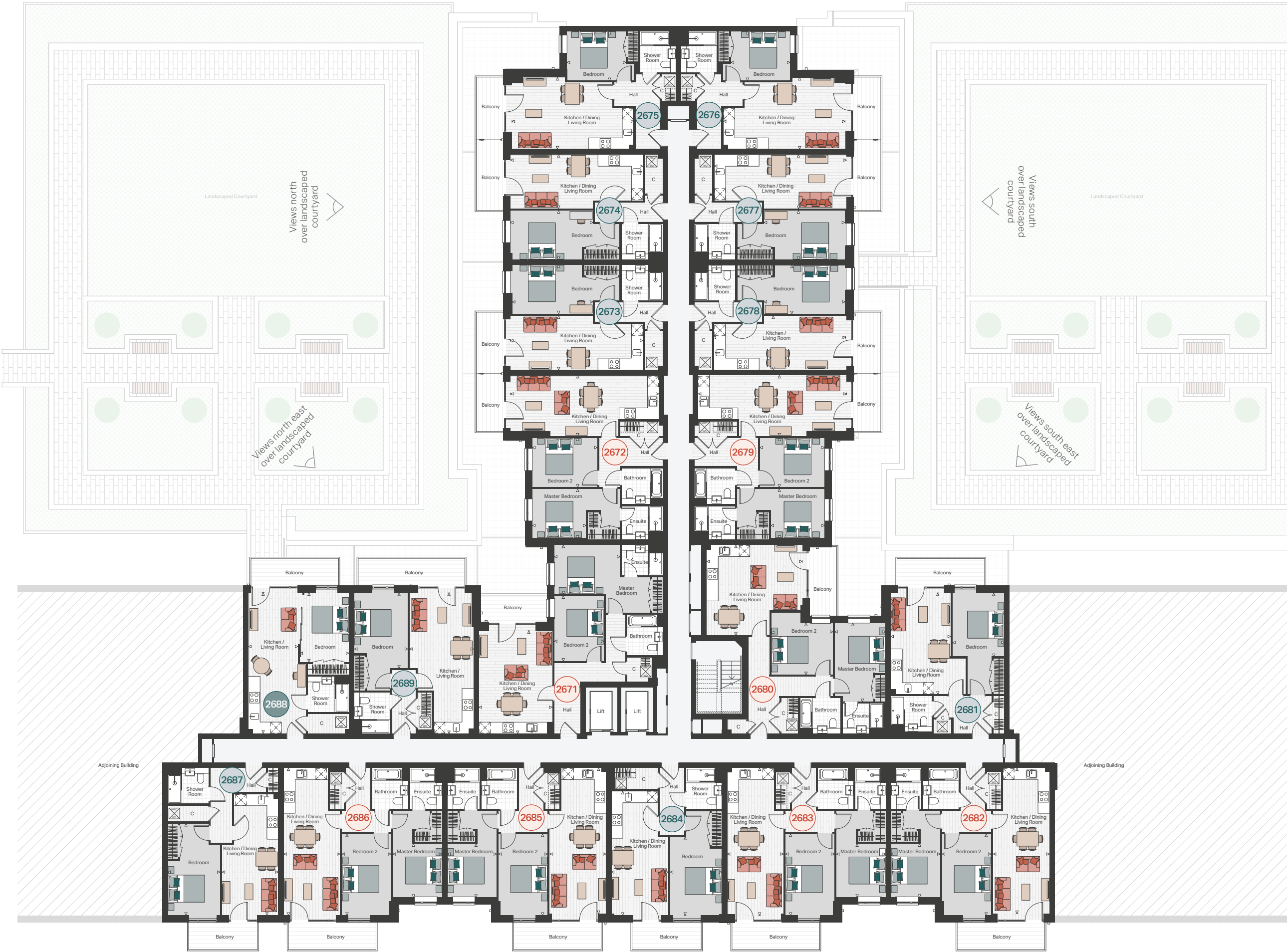
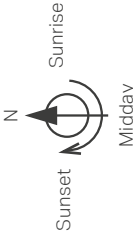
APARTMENT KEY

- Manhattan 1 Bedroom Apartment
- 1 Bedroom Apartment
- 2 Bedroom Apartment

FOXLGLOVE HOUSE



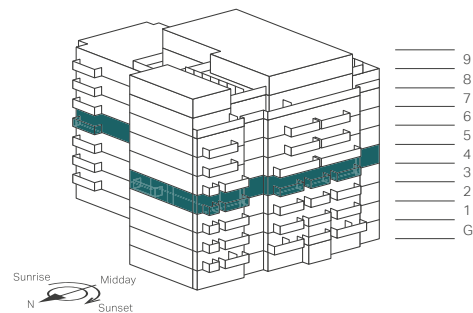
- 2 Ring Hob
- 4 Ring Hob
- Fridge / Freezer
- Hot Water Cylinder
- Hot Water Cylinder 300L
- Washer / Dryer
- Oven
- Below Counter Fridge
- C Cupboard



Floorplans shown for Foxglove Apartments are approximate measurements only. Exact layout and sizes may vary. All measurements may vary within a tolerance of 5%. Car park shown for illustrative purposes only. Car parking available subject to additional cost.



Fourth Floor



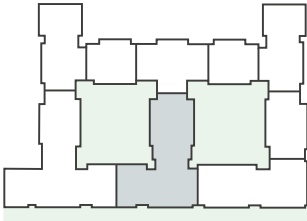
<div></div> 2690 – 2 Bedroom	74.2 sq m	799 sq ft
Living Space / Kitchen	5.72m x 4.12m	18' 8" x 13' 6"
Master Bedroom	3.66m x 2.75m	12' 0" x 9' 0"
Bedroom 2	3.65m x 2.77m	12' 0" x 9' 1"
Balcony	5.2 sq m	56 sq ft
<div></div> 2691 – 2 Bedroom	70.1 sq m	755 sq ft
Living Space / Kitchen	8.31m x 3.42m	27' 3" x 11' 3"
Master Bedroom	3.00m x 2.75m	9' 10" x 9' 0"
Bedroom 2	3.62m x 2.75m	11' 11" x 9' 0"
Balcony	4.6 sq m	50 sq ft
<div></div> 2692 – 2 Bedroom	77.3 sq m	832 sq ft
Living Space / Kitchen	8.50m x 3.43m	27' 10" x 11' 3"
Master Bedroom	3.92m x 2.75m	12' 10" x 9' 0"
Bedroom 2	4.82m x 2.75m	15' 10" x 9' 0"
Balcony	5.4 sq m	58 sq ft
<div></div> 2693 – 2 Bedroom	73.4 sq m	790 sq ft
Living Space / Kitchen	6.96m x 3.73m	22' 10" x 12' 3"
Master Bedroom	3.55m x 3.70m	11' 7" x 12' 2"
Bedroom 2	2.96m x 2.82m	9' 9" x 9' 3"
Balcony	11.2 sq m	120 sq ft
<div></div> 2694 – 2 Bedroom	73.4 sq m	790 sq ft
Living Space / Kitchen	6.96m x 3.73m	22' 10" x 12' 3"
Master Bedroom	3.55m x 3.70m	11' 7" x 12' 2"
Bedroom 2	2.96m x 2.82m	9' 9" x 9' 3"
Balcony	11.2 sq m	120 sq ft
<div></div> 2695 – 2 Bedroom	77.3 sq m	832 sq ft
Living Space / Kitchen	8.50m x 3.43m	27' 11" x 11' 3"
Master Bedroom	3.92m x 2.75m	12' 10" x 9' 0"
Bedroom 2	4.82m x 2.75m	15' 10" x 9' 0"
Balcony	5.0 sq m	54 sq ft
<div></div> 2696 – 2 Bedroom	70.1 sq m	755 sq ft
Living Space / Kitchen	8.31m x 3.42m	27' 3" x 11' 3"
Master Bedroom	3.00m x 2.75m	9' 10" x 9' 0"
Bedroom 2	3.62m x 2.75m	11' 11" x 9' 0"
Balcony	4.9 sq m	53 sq ft
<div></div> 2697 – 2 Bedroom	73.2 sq m	788 sq ft
Living Space / Kitchen	5.34m x 5.04m	17' 6" x 16' 6"
Master Bedroom	4.39m x 2.85m	14' 5" x 9' 4"
Bedroom 2	3.44m x 2.89m	11' 3" x 9' 6"
Balcony	5.9 sq m	63 sq ft
<div></div> 2698 – 1 Bedroom	50.0 sq m	538 sq ft
Living Space / Kitchen	5.67m x 3.35m	18' 7" x 11' 0"
Bedroom	3.57m x 2.90m	11' 9" x 9' 6"
Balcony	7.3 sq m	78 sq ft

<div></div> 2699 – 2 Bedroom	70.0 sq m	753 sq ft
Living Space / Kitchen	8.14m x 3.16m	26' 8" x 10' 4"
Master Bedroom	3.00m x 2.76m	9' 10" x 9' 1"
Bedroom 2	4.54m x 2.75m	14' 11" x 9' 0"
Balcony	7.3 sq m	78 sq ft
<div></div> 2700 – 2 Bedroom	70.0 sq m	753 sq ft
Living Space / Kitchen	8.14m x 3.16m	26' 8" x 10' 4"
Master Bedroom	3.00m x 2.76m	9' 10" x 9' 1"
Bedroom 2	4.54m x 2.75m	14' 11" x 9' 0"
Balcony	7.3 sq m	78 sq ft
<div></div> 2701 – 1 Bedroom	51.1 sq m	550 sq ft
Living Space / Kitchen	6.94m x 3.20m	22' 9" x 10' 6"
Bedroom	4.38m x 2.91m	14' 4" x 9' 7"
Balcony	5.9 sq m	64 sq ft
<div></div> 2702 – 2 Bedroom	70.0 sq m	753 sq ft
Living Space / Kitchen	8.16m x 3.16m	26' 9" x 10' 4"
Master Bedroom	3.00m x 2.75m	9' 10" x 9' 0"
Bedroom 2	4.55m x 2.75m	14' 11" x 9' 0"
Balcony	7.3 sq m	78 sq ft
<div></div> 2703 – 2 Bedroom	70.0 sq m	753 sq ft
Living Space / Kitchen	8.16m x 3.16m	26' 9" x 10' 4"
Master Bedroom	3.00m x 2.75m	9' 10" x 9' 0"
Bedroom 2	4.55m x 2.75m	14' 11" x 9' 0"
Balcony	7.3 sq m	78 sq ft
<div></div> 2704 – 1 Bedroom	51.1 sq m	550 sq ft
Living Space / Kitchen	6.79m x 3.16m	22' 3" x 10' 4"
Bedroom	5.15m x 2.95m	16' 11" x 9' 8"
Balcony	5.9 sq m	64 sq ft
<div></div> 2705 – Manhattan	44.2 sq m	476 sq ft
Living Space / Kitchen	7.87m x 2.76m	25' 10" x 9' 1"
Bedroom	3.88m x 2.75m	12' 9" x 9' 0"
Balcony	7.3 sq m	78 sq ft
<div></div> 2706 – 1 Bedroom	52.3 sq m	563 sq ft
Living Space / Kitchen	7.87m x 3.58m	25' 10" x 11' 9"
Bedroom	4.22m x 3.00m	13' 10" x 9' 10"
Balcony	8.8 sq m	94 sq ft

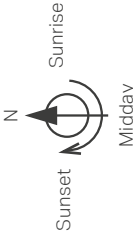
APARTMENT KEY

- Manhattan 1 Bedroom Apartment
- 1 Bedroom Apartment
- 2 Bedroom Apartment

FOXGLOVE HOUSE



- 2 Ring Hob
- 4 Ring Hob
- Fridge / Freezer
- Hot Water Cylinder
- Hot Water Cylinder 300L
- Washer / Dryer
- Oven
- Below Counter Fridge
- C Cupboard



Floorplans shown for Foxglove Apartments are approximate measurements only. Exact layout and sizes may vary. All measurements may vary within a tolerance of 5%. Car park shown for illustrative purposes only. Car parking available subject to additional cost.



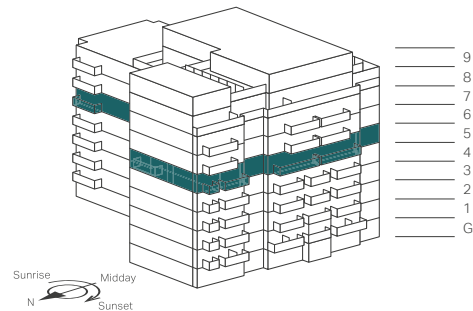
Views west over Landscaped Park

Views west over Landscaped Park

Views west over Landscaped Park



Fifth Floor



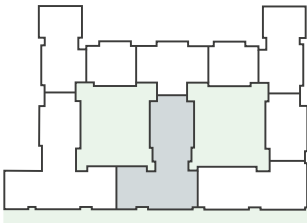
<div></div> 2707 – 2 Bedroom	74.2 sq m	799 sq ft
Living Space / Kitchen	5.72m x 4.12m	18' 8" x 13' 6"
Master Bedroom	3.66m x 2.75m	12' 0" x 9' 0"
Bedroom 2	3.65m x 2.77m	12' 0" x 9' 1"
Balcony	5.2 sq m	56 sq ft
<div></div> 2708 – 2 Bedroom	70.1 sq m	755 sq ft
Living Space / Kitchen	8.31m x 3.42m	27' 3" x 11' 3"
Master Bedroom	3.00m x 2.75m	9' 10" x 9' 0"
Bedroom 2	3.62m x 2.75m	11' 11" x 9' 0"
Balcony	4.6 sq m	50 sq ft
<div></div> 2709 – 2 Bedroom	77.3 sq m	832 sq ft
Living Space / Kitchen	8.50m x 3.43m	27' 11" x 11' 3"
Master Bedroom	3.92m x 2.75m	12' 10" x 9' 0"
Bedroom 2	4.82m x 2.75m	15' 10" x 9' 0"
Balcony	5.4 sq m	58 sq ft
<div></div> 2710 – 2 Bedroom	73.4 sq m	790 sq ft
Living Space / Kitchen	6.96m x 3.73m	22' 10" x 12' 3"
Master Bedroom	3.55m x 3.70m	11' 7" x 12' 2"
Bedroom 2	2.96m x 2.82m	9' 9" x 9' 3"
Balcony	11.2 sq m	120 sq ft
<div></div> 2711 – 2 Bedroom	73.4 sq m	790 sq ft
Living Space / Kitchen	6.96m x 3.73m	22' 10" x 12' 3"
Master Bedroom	3.55m x 3.70m	11' 7" x 12' 2"
Bedroom 2	2.96m x 2.82m	9' 9" x 9' 3"
Balcony	11.2 sq m	120 sq ft
<div></div> 2712 – 2 Bedroom	77.3 sq m	832 sq ft
Living Space / Kitchen	8.50m x 3.43m	27' 11" x 11' 3"
Master Bedroom	3.92m x 2.75m	12' 10" x 9' 0"
Bedroom 2	4.82m x 2.75m	15' 10" x 9' 0"
Balcony	5.0 sq m	54 sq ft
<div></div> 2713 – 2 Bedroom	70.1 sq m	755 sq ft
Living Space / Kitchen	8.31m x 3.42m	27' 3" x 11' 3"
Master Bedroom	3.00m x 2.75m	9' 10" x 9' 0"
Bedroom 2	3.62m x 2.75m	11' 11" x 9' 0"
Balcony	4.9 sq m	53 sq ft
<div></div> 2714 – 2 Bedroom	73.2 sq m	788 sq ft
Living Space / Kitchen	5.34m x 5.04m	17' 6" x 16' 6"
Master Bedroom	4.39m x 2.85m	14' 5" x 9' 4"
Bedroom 2	3.44m x 2.89m	11' 3" x 9' 6"
Balcony	5.9 sq m	63 sq ft
<div></div> 2715 – 1 Bedroom	50.0 sq m	538 sq ft
Living Space / Kitchen	5.67m x 3.35m	18' 7" x 11' 0"
Bedroom	3.57m x 2.90m	11' 9" x 9' 6"
Balcony	7.3 sq m	78 sq ft

<div></div> 2716 – 2 Bedroom ELITE	70.0 sq m	753 sq ft
Living Space / Kitchen	8.14m x 3.16m	26' 8" x 10' 4"
Master Bedroom	3.00m x 2.76m	9' 10" x 9' 1"
Bedroom 2	4.54m x 2.75m	14' 11" x 9' 0"
Balcony	7.3 sq m	78 sq ft
<div></div> 2717 – 3 Bedroom ELITE	96.4 sq m	1,038 sq ft
Living Space / Kitchen	8.14m x 3.52m	26' 8" x 11' 7"
Master Bedroom	3.33m x 2.75m	10' 11" x 9' 0"
Bedroom 2	3.23m x 2.79m	10' 7" x 9' 2"
Bedroom 3	3.23m x 2.76m	10' 7" x 9' 1"
Balcony	12.4 sq m	133 sq ft
<div></div> 2718 – 3 Bedroom ELITE	96.2 sq m	1,036 sq ft
Living Space / Kitchen	8.14m x 3.52m	26' 8" x 11' 7"
Master Bedroom	3.23m x 2.76m	10' 7" x 9' 1"
Bedroom 2	3.20m x 2.75m	10' 6" x 9' 0"
Bedroom 3	3.20m x 2.78m	10' 6" x 9' 1"
Balcony	12.4 sq m	133 sq ft
<div></div> 2719 – 2 Bedroom ELITE	70.0 sq m	753 sq ft
Living Space / Kitchen	8.16m x 3.16m	26' 9" x 10' 4"
Master Bedroom	3.00m x 2.75m	9' 10" x 9' 0"
Bedroom 2	4.55m x 2.75m	14' 11" x 9' 0"
Balcony	7.3 sq m	78 sq ft
<div></div> 2720 – 1 Bedroom ELITE	51.1 sq m	550 sq ft
Living Space / Kitchen	6.79m x 3.16m	22' 3" x 10' 4"
Bedroom	5.15m x 2.95m	16' 11" x 9' 8"
Balcony	5.9 sq m	64 sq ft
<div></div> 2721 – 1 Bedroom	50.7 sq m	546 sq ft
Living Space / Kitchen	6.33m x 3.41m	20' 9" x 11' 2"
Bedroom	4.13m x 2.97m	13' 7" x 9' 9"
Balcony	8.8 sq m	94 sq ft
<div></div> 2722 – 2 Bedroom	71.4 sq m	769 sq ft
Living Space / Kitchen	7.87m x 3.44m	25' 10" x 11' 3"
Master Bedroom	3.27m x 2.75m	10' 9" x 9' 0"
Bedroom 2	4.17m x 2.75m	13' 8" x 9' 0"
Balcony	8.8 sq m	94 sq ft

APARTMENT KEY

- 1 Bedroom Apartment
- 2 Bedroom Apartment
- 3 Bedroom Apartment

FOXLGLOVE HOUSE



- 2 Ring Hob
- 4 Ring Hob
- Fridge / Freezer
- Hot Water Cylinder
- Hot Water Cylinder 300L
- Washer / Dryer
- Oven
- Below Counter Fridge
- C Cupboard

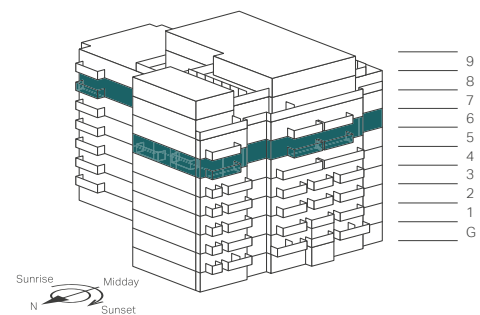


Floorplans shown for Foxglove Apartments are approximate measurements only. Exact layout and sizes may vary. All measurements may vary within a tolerance of 5%. Car park shown for illustrative purposes only. Car parking available subject to additional cost.

The Elite Collection



Sixth Floor



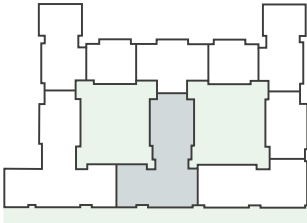
2723 – 2 Bedroom ELITE	74.2 sq m	799 sq ft
Living Space / Kitchen	5.72m x 4.12m	18' 8" x 13' 6"
Master Bedroom	3.66m x 2.75m	12' 0" x 9' 0"
Bedroom 2	3.65m x 2.77m	12' 0" x 9' 1"
Balcony	5.2 sq m	56 sq ft
2724 – 2 Bedroom ELITE	70.1 sq m	755 sq ft
Living Space / Kitchen	8.31m x 3.42m	27' 3" x 11' 3"
Master Bedroom	3.00m x 2.75m	9' 10" x 9' 0"
Bedroom 2	3.62m x 2.75m	11' 11" x 9' 0"
Balcony	4.6 sq m	50 sq ft
2725 – 2 Bedroom ELITE	77.3 sq m	832 sq ft
Living Space / Kitchen	8.50m x 3.43m	27' 11" x 11' 3"
Master Bedroom	3.92m x 2.75m	12' 10" x 9' 0"
Bedroom 2	4.82m x 2.75m	15' 10" x 9' 0"
Balcony	5.4 sq m	58 sq ft
2726 – 2 Bedroom ELITE	73.4 sq m	790 sq ft
Living Space / Kitchen	6.96m x 3.73m	22' 10" x 12' 3"
Master Bedroom	3.55m x 3.70m	11' 7" x 12' 2"
Bedroom 2	2.96m x 2.82m	9' 9" x 9' 3"
Balcony	11.2 sq m	120 sq ft
2727 – 2 Bedroom ELITE	73.4 sq m	790 sq ft
Living Space / Kitchen	6.96m x 3.73m	22' 10" x 12' 3"
Master Bedroom	3.55m x 3.70m	11' 7" x 12' 2"
Bedroom 2	2.96m x 2.82m	9' 9" x 9' 3"
Balcony	11.2 sq m	120 sq ft
2728 – 2 Bedroom ELITE	77.3 sq m	832 sq ft
Living Space / Kitchen	8.50m x 3.43m	27' 11" x 11' 3"
Master Bedroom	3.92m x 2.75m	12' 10" x 9' 0"
Bedroom 2	4.82m x 2.75m	15' 10" x 9' 0"
Balcony	5.0 sq m	54 sq ft
2729 – 2 Bedroom ELITE	70.1 sq m	755 sq ft
Living Space / Kitchen	8.31m x 3.42m	27' 3" x 11' 3"
Master Bedroom	3.00m x 2.75m	9' 10" x 9' 0"
Bedroom 2	3.62m x 2.75m	11' 11" x 9' 0"
Balcony	4.9 sq m	53 sq ft
2730 – 2 Bedroom ELITE	73.3 sq m	789 sq ft
Living Space / Kitchen	5.34m x 5.04m	17' 6" x 16' 6"
Master Bedroom	4.39m x 2.85m	14' 5" x 9' 4"
Bedroom 2	3.44m x 2.89m	11' 3" x 9' 6"
Balcony	5.9 sq m	63 sq ft
2731 – 1 Bedroom ELITE	50.0 sq m	538 sq ft
Living Space / Kitchen	5.67m x 3.35m	18' 7" x 11' 0"
Bedroom	3.57m x 2.90m	11' 9" x 9' 6"
Balcony	7.3 sq m	78 sq ft

2732 – 3 Bedroom ELITE	96.6 sq m	1,040 sq ft
Living Space / Kitchen	8.14m x 3.56m	26' 8" x 11' 8"
Master Bedroom	3.24m x 2.76m	10' 8" x 9' 1"
Bedroom 2	3.20m x 2.75m	10' 6" x 9' 0"
Bedroom 3	3.20m. 2.75m	10' 6" x 9' 0"
Balcony	8.8 sq m	94 sq ft
2733 – 3 Bedroom ELITE	96.4 sq m	1,038 sq ft
Living Space / Kitchen	8.14m x 3.52m	26' 8" x 11' 7"
Master Bedroom	3.33m x 2.75m	10' 11" x 9' 0"
Bedroom 2	3.23m x 2.79m	10' 7" x 9' 2"
Bedroom 3	3.23m x 2.76m	10' 7" x 9' 1"
Balcony	8.8 sq m	94 sq ft
2734 – 3 Bedroom ELITE	96.2 sq m	1,036 sq ft
Living Space / Kitchen	8.14m x 3.52m	26' 8" x 11' 7"
Master Bedroom	3.23m x 2.76m	10' 7" x 9' 1"
Bedroom 2	3.20m x 2.75m	10' 6" x 9' 0"
Bedroom 3	3.20m x 2.78m	10' 6" x 9' 1"
Balcony	8.8 sq m	94 sq ft
2735 – 3 Bedroom ELITE	96.3 sq m	1,037 sq ft
Living Space / Kitchen	8.14m x 3.52m	26' 8" x 11' 7"
Master Bedroom	3.23m x 2.76m	10' 7" x 9' 1"
Bedroom 2	3.20m x 2.75m	10' 6" x 9' 0"
Bedroom 3	3.20m x 2.78m	10' 6" x 9' 1"
Balcony	8.8 sq m	94 sq ft
2736 – 1 Bedroom ELITE	50.7 sq m	546 sq ft
Living Space / Kitchen	6.33m x 3.41m	20' 9" x 11' 2"
Bedroom	4.13m x 2.97m	13' 7" x 9' 9"
Balcony	8.8 sq m	94 sq ft
2737 – 2 Bedroom ELITE	71.4 sq m	769 sq ft
Living Space / Kitchen	7.87m x 3.44m	25' 10" x 11' 3"
Master Bedroom	3.27m x 2.75m	10' 9" x 9' 0"
Bedroom 2	4.17m x 2.75m	13' 8" x 9' 0"
Balcony	8.8 sq m	94 sq ft

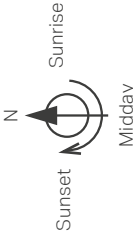
APARTMENT KEY

- 1 Bedroom Apartment
- 2 Bedroom Apartment
- 3 Bedroom Apartment

FOXLGLOVE HOUSE



- 2 Ring Hob
- 4 Ring Hob
- Fridge / Freezer
- Hot Water Cylinder
- Hot Water Cylinder 300L
- Washer / Dryer
- Oven
- Below Counter Fridge
- C Cupboard



Floorplans shown for Foxglove Apartments are approximate measurements only. Exact layout and sizes may vary. All measurements may vary within a tolerance of 5%. Car park shown for illustrative purposes only. Car parking available subject to additional cost.



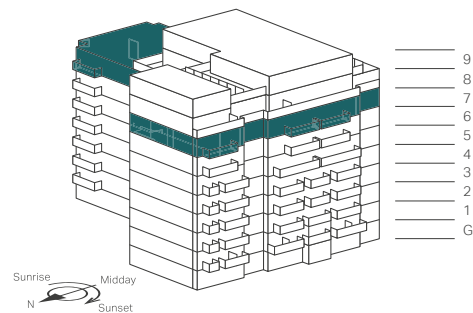
Views west over Landscaped Park

Views west over Landscaped Park

Views west over Landscaped Park

The Elite & Premier Collection

Seventh Floor



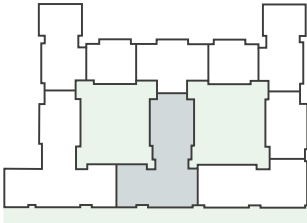
2738 – 2 Bedroom ELITE	74.2 sq m	799 sq ft
Living Space / Kitchen	5.72m x 4.12m	18' 8" x 13' 6"
Master Bedroom	3.66m x 2.75m	12' 0" x 9' 0"
Bedroom 2	3.65m x 2.77m	12' 0" x 9' 1"
Balcony	5.2 sq m	56 sq ft
2739 – 2 Bedroom ELITE	70.1 sq m	755 sq ft
Living Space / Kitchen	8.31m x 3.42m	27' 3" x 11' 3"
Master Bedroom	3.00m x 2.75m	9' 10" x 9' 0"
Bedroom 2	3.62m x 2.75m	11' 11" x 9' 0"
Balcony	4.6 sq m	50 sq ft
2740 – 2 Bedroom ELITE	77.3 sq m	832 sq ft
Living Space / Kitchen	8.50m x 3.43m	27' 11" x 11' 3"
Master Bedroom	3.92m x 2.75m	12' 10" x 9' 0"
Bedroom 2	4.82m x 2.75m	15' 10" x 9' 0"
Balcony	5.4 sq m	58 sq ft
2741 – 2 Bedroom ELITE	73.4 sq m	790 sq ft
Living Space / Kitchen	6.96m x 3.73m	22' 10" x 12' 3"
Master Bedroom	3.55m x 3.70m	11' 7" x 12' 2"
Bedroom 2	2.96m x 2.82m	9' 9" x 9' 3"
Balcony	11.2 sq m	120 sq ft
2742 – 2 Bedroom ELITE	73.4 sq m	790 sq ft
Living Space / Kitchen	6.96m x 3.73m	22' 10" x 12' 3"
Master Bedroom	3.55m x 3.70m	11' 7" x 12' 2"
Bedroom 2	2.96m x 2.82m	9' 9" x 9' 3"
Balcony	11.2 sq m	120 sq ft
2743 – 2 Bedroom ELITE	77.3 sq m	832 sq ft
Living Space / Kitchen	8.50m x 3.43m	27' 11" x 11' 3"
Master Bedroom	3.92m x 2.75m	12' 10" x 9' 0"
Bedroom 2	4.82m x 2.75m	15' 10" x 9' 0"
Balcony	5.0 sq m	54 sq ft
2744 – 2 Bedroom ELITE	70.1 sq m	755 sq ft
Living Space / Kitchen	8.31m x 3.42m	27' 3" x 11' 3"
Master Bedroom	3.00m x 2.75m	9' 10" x 9' 0"
Bedroom 2	3.62m x 2.75m	11' 11" x 9' 0"
Balcony	4.9 sq m	53 sq ft
2745 – 2 Bedroom ELITE	73.2 sq m	788 sq ft
Living Space / Kitchen	5.34m x 5.04m	17' 6" x 16' 6"
Master Bedroom	4.39m x 2.85m	14' 5" x 9' 4"
Bedroom 2	3.44m x 2.89m	11' 3" x 9' 6"
Balcony	5.9 sq m	63 sq ft
2746 – 1 Bedroom ELITE	50.0 sq m	538 sq ft
Living Space / Kitchen	5.67m x 3.35m	18' 7" x 11' 0"
Bedroom	3.57m x 2.90m	11' 9" x 9' 6"
Balcony	7.3 sq m	78 sq ft

2747 – 3 Bedroom PREMIER	96.6 sq m	1,040 sq ft
Living Space / Kitchen	8.14m x 3.56m	26' 8" x 11' 8"
Master Bedroom	3.24m x 2.76m	10' 8" x 9' 1"
Bedroom 2	3.20m x 2.75m	10' 6" x 9' 0"
Bedroom 3	3.20m x 2.75m	10' 6" x 9' 0"
Balcony	8.8 sq m	94 sq ft
2748 – 3 Bedroom PREMIER	96.4 sq m	1,038 sq ft
Living Space / Kitchen	8.14m x 3.52m	26' 8" x 11' 7"
Master Bedroom	3.33m x 2.75m	10' 11" x 9' 0"
Bedroom 2	3.23m x 2.79m	10' 7" x 9' 2"
Bedroom 3	3.23m x 2.76m	10' 7" x 9' 1"
Balcony	8.8 sq m	94 sq ft
2749 – 3 Bedroom PREMIER	96.2 sq m	1,036 sq ft
Living Space / Kitchen	8.14m x 3.52m	26' 8" x 11' 7"
Master Bedroom	3.23m x 2.76m	10' 7" x 9' 1"
Bedroom 2	3.20m x 2.75m	10' 6" x 9' 0"
Bedroom 3	3.20m x 2.78m	10' 6" x 9' 1"
Balcony	8.8 sq m	94 sq ft
2750 – 3 Bedroom PREMIER	96.3 sq m	1,037 sq ft
Living Space / Kitchen	8.14m x 3.52m	26' 8" x 11' 7"
Master Bedroom	3.23m x 2.76m	10' 7" x 9' 1"
Bedroom 2	3.20m x 2.75m	10' 6" x 9' 0"
Bedroom 3	3.20m x 2.78m	10' 6" x 9' 1"
Balcony	8.8 sq m	94 sq ft
2751 – 1 Bedroom ELITE	50.7 sq m	546 sq ft
Living Space / Kitchen	6.33m x 3.41m	20' 9" x 11' 2"
Bedroom	4.13m x 2.97m	13' 7" x 9' 9"
Balcony	8.8 sq m	94 sq ft
2752 – 2 Bedroom ELITE	71.4 sq m	769 sq ft
Living Space / Kitchen	7.87m x 3.44m	25' 10" x 11' 3"
Master Bedroom	3.27m x 2.75m	10' 9" x 9' 0"
Bedroom 2	4.17m x 2.75m	13' 8" x 9' 0"
Balcony	8.8 sq m	94 sq ft

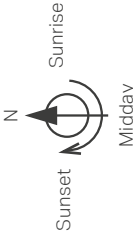
APARTMENT KEY

- 1 Bedroom Apartment
- 2 Bedroom Apartment
- 3 Bedroom Apartment

FOXLGLOVE HOUSE



- 2 Ring Hob
- 4 Ring Hob
- Fridge / Freezer
- Hot Water Cylinder
- Hot Water Cylinder 300L
- Washer / Dryer
- Oven
- Below Counter Fridge
- C Cupboard



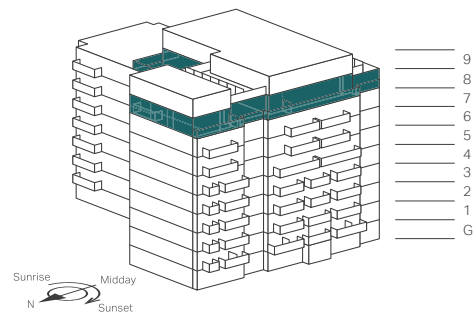
Floorplans shown for Foxglove Apartments are approximate measurements only. Exact layout and sizes may vary. All measurements may vary within a tolerance of 5%. Car park shown for illustrative purposes only. Car parking available subject to additional cost.



The Elite & Premier Collection



Eighth Floor



2753 – 2 Bedroom ELITE	76.2 sq m	820 sq ft
Living Space / Kitchen	5.84m x 5.67m	19' 2" x 18' 7"
Master Bedroom	4.14m x 2.75m	13' 7" x 9' 0"
Bedroom 2	3.87m x 2.77m	12' 8" x 9' 1"
Balcony	5.4 sq m	58 sq ft

2754 – 2 Bedroom ELITE	75.6 sq m	814 sq ft
Living Space / Kitchen	6.80m x 4.29m	22' 4" x 14' 1"
Master Bedroom	3.51m x 3.41m	11' 6" x 11' 2"
Bedroom 2	3.41m x 3.15m	11' 2" x 10' 4"
Terrace	72.0 sq m	775 sq ft

2755 – 2 Bedroom ELITE	75.6 sq m	814 sq ft
Living Space / Kitchen	6.77m x 4.29m	22' 3" x 14' 1"
Master Bedroom	3.50m x 3.38m	11' 6" x 11' 1"
Bedroom 2	3.38m x 3.15m	11' 1" x 10' 4"
Terrace	72.0 sq m	775 sq ft

2756 – 2 Bedroom ELITE	74.3 sq m	800 sq ft
Living Space / Kitchen	5.27m x 5.25m	17' 3" x 17' 3"
Master Bedroom	4.39m x 2.85m	14' 5" x 9' 4"
Bedroom 2	3.44m x 2.89m	11' 3" x 9' 6"
Balcony	5.6 sq m	60 sq ft

2757 – 3 Bedroom PREMIER	104.0 sq m	1,119 sq ft
Living Space / Kitchen	6.40m x 5.00m	21' 0" x 16' 5"
Master Bedroom	4.78m x 2.75m	15' 8" x 9' 0"
Bedroom 2	3.43m x 2.80m	11' 3" x 9' 2"
Bedroom 3	4.21m x 2.75m	13' 10" x 9' 0"
Terrace	22.2 sq m	239 sq ft

2758 – 2 Bedroom ELITE	79.2 sq m	853 sq ft
Living Space / Kitchen	7.12m x 6.23m	23' 4" x 20' 5"
Master Bedroom	3.40m x 3.07m	11' 2" x 10' 1"
Bedroom 2	3.57m x 2.89m	11' 9" x 9' 6"
Terrace	21.0 sq m	226 sq ft

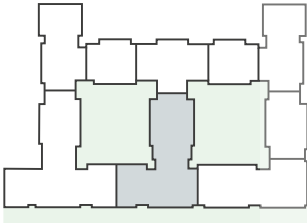
2759 – 4 Bedroom Penthouse PREMIER	163.9 sq m	1,764 sq ft
Living Space / Kitchen	8.40m x 7.31m	27' 7" x 24' 0"
Master Bedroom	4.22m x 2.90m	13' 10" x 9' 6"
Bedroom 2	3.66m x 3.12m	12' 0" x 10' 3"
Bedroom 3	3.56m x 3.04m	11' 8" x 10' 0"
Bedroom 4	3.09m x 2.65m	10' 2" x 8' 8"
Terrace	71.7 sq m	772 sq ft

2760 – 2 Bedroom ELITE	74.6 sq m	803 sq ft
Living Space / Kitchen	5.84m x 4.90m	19' 2" x 16' 1"
Master Bedroom	3.55m x 2.75m	11' 8" x 9' 0"
Bedroom 2	3.55m x 2.97m	11' 8" x 9' 9"
Terrace	20.4 sq m	220 sq ft

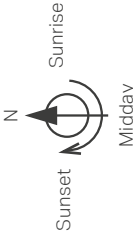
APARTMENT KEY

- 2 Bedroom Apartment
- 3 Bedroom Apartment
- 4 Bedroom Penthouse

FOXGLOVE HOUSE



- 2 Ring Hob
- 4 Ring Hob
- Fridge / Freezer
- Hot Water Cylinder
- Hot Water Cylinder 300L
- Washer / Dryer
- Oven
- Below Counter Fridge
- C Cupboard

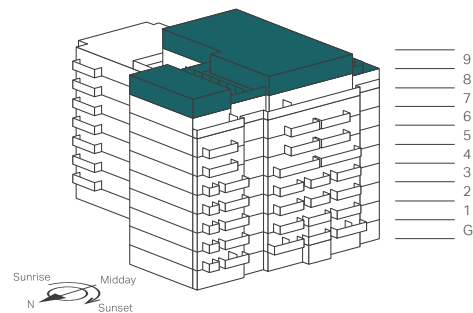


Floorplans shown for Foxglove Apartments are approximate measurements only. Exact layout and sizes may vary. All measurements may vary within a tolerance of 5%. Car park shown for illustrative purposes only. Car parking available subject to additional cost.

The Elite & Premier Collection



Ninth Floor

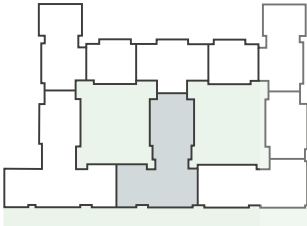


<div></div> 2759 – 4 Bedroom Penthouse	163.9 sq m	1,764 sq ft
PREMIER		
Living Space/Kitchen	8.40m x 7.31m	27' 7" x 24' 0"
Master Bedroom	4.22m x 2.90m	13' 10" x 9' 6"
Bedroom 2	3.66m x 3.12m	12' 0" x 10' 3"
Bedroom 3	3.56m x 3.04m	11' 8" x 10' 0"
Bedroom 4	3.09m x 2.65m	10' 2" x 8' 8"
Terrace	71.7 sq m	772 sq ft
<div></div> 2761 – 3 Bedroom Penthouse	125.0 sq m	1,346 sq ft
ELITE		
Living Space/Kitchen	6.70m x 6.56m	22' 0" x 21' 6"
Master Bedroom	3.90m x 3.21m	12' 10" x 10' 6"
Bedroom 2	3.77m x 2.90m	12' 4" x 9' 6"
Bedroom 3	3.87m x 3.04m	12' 8" x 10' 0"
Balcony	8.8 sq m	94 sq ft
<div></div> 2762 – 3 Bedroom Penthouse	117.2 sq m	1,262 sq ft
ELITE		
Living Space/Kitchen	6.74m x 5.93m	22' 1" x 19' 5"
Master Bedroom	4.39m x 3.03m	14' 5" x 9' 11"
Bedroom 2	3.79m x 2.85m	12' 5" x 9' 4"
Bedroom 3	3.90m x 2.75m	12' 10" x 9' 0"
Balcony	8.8 sq m	94 sq ft
<div></div> 2763 – 3 Bedroom Penthouse	126.4 sq m	1,361 sq ft
PREMIER		
Living Space/Kitchen	10.10m x 5.53m	33' 2" x 18' 2"
Master Bedroom	4.35m x 2.63m	14' 3" x 8' 8"
Bedroom 2	4.06m x 4.08m	13' 4" x 13' 5"
Bedroom 3	4.06m x 2.85m	13' 4" x 9' 4"
Terrace	117.6 sq m	1,266 sq ft

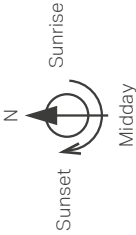
APARTMENT KEY

- 3 Bedroom Apartment
- 4 Bedroom Penthouse

FOXGLOVE HOUSE



- 2 Ring Hob
- 4 Ring Hob
- Fridge / Freezer
- Hot Water Cylinder
- Hot Water Cylinder 300L
- Washer / Dryer
- Oven
- Below Counter Fridge
- C Cupboard



Floorplans shown for Foxglove Apartments are approximate measurements only. Exact layout and sizes may vary. All measurements may vary within a tolerance of 5%. Car park shown for illustrative purposes only. Car parking available subject to additional cost.



Bedroom



Light-filled spaces

GENERAL

- Feature architrave and skirting
- Double-glazed windows
- Balcony or terrace to all apartments
- Wardrobe inclusive of shelf and rail, to Master bedroom¹
- Matt emulsion paint finish to walls and ceilings
- Managed residents' gated car parking²
- 999-year lease from December 2005
- 2-year St George warranty
- 10-year insurance backed building warranty

¹ Except studio apartments.
² Available at an additional cost, subject to availability.



Living and dining

APARTMENT SPECIFICATION

Stylish and modern, each apartment features a balcony or terrace, alongside contemporary fittings.



Kitchen and dining area



Bedroom

SECURITY

- Colour video entryphone system
- Mains-operated smoke detectors to hallways and communal areas
- 24-hour estate management³
- Monitored CCTV security system³

COMMUNAL AREAS

- Landscaped public areas³
- Access to The Spa, residents' health and fitness suite³
- Lifts to all floors
- Low-level feature lighting to landscaped areas³
- Stylishly designed entrance lobby with feature wall and timber panelling

³ Payable via the service charge.



Living space



Kitchen

KITCHEN

- Custom-designed fitted kitchen with slimline laminate kitchen worktop
- Feature tile splashback
- Integrated fridge / freezer
- Integrated dishwasher (except studio apartments)
- Integrated oven and touch control induction hob
- Grade A energy-efficient kitchen appliances¹
- Integrated extractor
- Stainless steel bowl sink and black mixer tap to Studio, Manhattan and 1 bedroom apartments
- Stainless steel 1½ bowl sink with black mixer tap to two, three and four bedroom apartments
- Under-wall unit LED lighting
- Washer / dryer in hall cupboard

¹ The specification comes as standard with every apartment. Your attention is drawn to the fact that it may not be possible to obtain the branded products as referred to in the specification. In such cases, a similar alternative will be provided. St George reserves the right to make these changes as required.



Kitchen storage

BATHROOM / EN SUITE & SHOWER ROOM

- Stylishly designed bathrooms and en suites with tiled floors and tiled wall
- Basin and WC
- Chrome taps
- Glass screen above bath where no separate shower enclosure within the same bathroom
- Screen to all separate showers
- Heated black towel rail
- Toilet roll holder
- Low-level vanity cabinet



Bathroom



Integrated SMEG oven

FLOORING

- Wood-effect flooring to living space, hallway and kitchen
- Carpet to bedrooms (wood-effect flooring in Manhattan and studio apartments)

ELECTRICAL

- LED downlighters to living space, kitchen, bathrooms and hallway with dimmer switch to living space
- Satellite TV and FM terrestrial TV points to living space and all bedrooms
- Electric panel heaters
- Telephone point
- Digital media box and one year pre-paid¹
- Sky Q contract installed and operational¹
- USB charging points to living space, kitchen and bedroom¹
- Pendant light to bedrooms
- White sockets and switches

¹ Terms and conditions apply, please liaise with the Sales Consultants for further details.



Living and dining

ELITE UPGRADE SPECIFICATION



Kitchen



Composite stone kitchen worktop



Built-in wardrobes

ENHANCE THE SPECIFICATION OF YOUR APARTMENT WITH AN ELITE UPGRADE

- Integrated wine cooler (size dependent on apartment type)
- Integrated microwave
- Composite stone kitchen worktop
- Composite stone top to bathroom vanity cabinet
- Chrome light switches and sockets throughout¹
- LED downlighters to living space, kitchen and bedroom²
- Enhanced wardrobe with drawers, shelf and rail to Bedroom 1
- Feature mirrored bathroom wall cabinet



Bathroom

¹ Where concealed behind appliances or within cupboards, sockets and switches are white. Upgrade specification available as a complete package at extra cost when you purchase a standard apartment. Please see the Sales Consultants for further information. Interior photographs are of Beaufort Park and are indicative only. Your attention is drawn to the fact that it may not be possible to obtain the branded products as referred to in the specification. In such cases, a similar alternative will be provided. St George reserves the right to make these changes as required.

² Ceiling rose to storage cupboard.

PREMIER SPECIFICATION

The Premier Specification is the finest in modern apartment living, fitting out your home with the finest details throughout.

The premier apartments offer the finest in modern apartment living. The quality specification has been created to suitably reflect its prime location. From the custom-designed fitted kitchens to the elegant porcelain

tilled bathrooms and en suites, each detail speaks of quality and style. Features such as dimmable lighting and an LED television in the living area further enhance the feeling of sophistication.



Open-plan living and dining

GENERAL

- Comfort cooling to living space and bedrooms¹
- Balcony or terrace to all apartments
- Built-in wardrobe to bedrooms 1 & 2, with internal lighting and drawers²
- 999-year lease from December 2005
- 2-year St George warranty
- 10-year insurance-backed building warranty
- Double-glazed windows
- Managed residents' gated car parking³

¹ The comfort cooling system is designed to provide an ambient temperature within the apartment for the majority of external temperatures. This may not be achieved in extreme temperature conditions.

² 3 bedroom apartments only.

³ Available at an additional cost, subject to availability.



Integrated appliances



Stone worktop and splashback

KITCHEN

- Custom-designed fitted kitchen
- Composite stone kitchen worktops and splashback
- Integrated stainless steel oven, microwave and touch control induction hob
- Integrated stainless steel extractor
- Integrated wine cooler
- Integrated fridge / freezer
- Integrated dishwasher
- Stainless steel 1½ sink bowl with black mixer tap and waste disposal unit
- Full-height storage cabinet²
- Corner carousel cabinet²
- Cutlery drawer inserts
- Washer / dryer in hallway cupboard

² Subject to kitchen design.

ELECTRICAL

- LED downlighters throughout with dimmer switches to living space and bedrooms 1, 2 & 3
- 50" 4K LED smart TV to living space
- Digital media box and one-year pre-paid contract installed and operational⁴
- USB charging points to living space, kitchen and bedroom⁴
- External light fittings to terraces only
- Telephone points to living space
- Brushed stainless steel sockets and switches throughout⁵

⁴ Terms and conditions apply, please liaise with the Sales Consultants for further details.

⁵ Where concealed behind appliances or within cupboards, sockets and switches are white. In such cases, a similar alternative will be provided. St George reserves the right to make these changes as required.



Shower room



Master Bedroom

BATHROOM / EN SUITE & SHOWER ROOM

- Stylishly designed bathrooms and en suites, with feature wall tiles and tiled floors
- Brushed stainless steel showering set to shower enclosure
- White oversized bath with chrome taps to main bathroom only
- Heated black towel rail
- Feature demisting mirrored wall cabinet with open shelving and perimeter lighting
- Low-level vanity unit with composite stone countertop and black tap
- Toilet roll holder

FLOORING

- Engineered timber flooring to living space, kitchen and hallway
- Carpet to bedrooms

Computer generated image and interior photography are of Beaufort Park and are indicative only. Your attention is drawn to the fact that it may not be possible to obtain the branded products as referred to in the specification. In such cases, a similar alternative will be provided. St George reserves the right to make these changes as required.



Living space



DESIGNED FOR LIFE

At St George, we are committed to creating great places where people love to live, work and relax. Where the homes are light-filled, adaptable and finished to very high standards. Where carefully planned public areas enhance well-being and quality of life for residents and visitors. Where people feel a sense of community.

Customers drive all our decisions

We achieve that by putting our customers at the heart of everything we do. First, we strive to understand what our customers want and need – well-built homes, in a pleasant and safe neighbourhood, with plenty of amenities and good transport connections. Then we apply that understanding to all our planning and design decisions.

And for every new development, we challenge ourselves to go further, to improve and innovate, ensuring we satisfy the real needs of our customers in inspiring and sustainable ways.

Choice and diversity

No two St George customers are the same, so we aim to offer a wide choice of property location, size and type. From central London to major towns and cities; from market towns to rural villages, countryside to the coast – we build in locations our customers love. And whatever home you are looking for, whether that's a city penthouse, a modern studio apartment or traditional family home, you will find the perfect fit for your lifestyle.

Quality first to last

Quality is the defining characteristic of St George developments, right down to the very last detail. We choose our locations, style of homes, construction practices, materials and specifications with great care. When you buy a new home from Berkeley you can be safe in the knowledge that it is built to high standards of design and quality, has low environmental impact and that you will receive a professional, efficient and helpful service from us. For extra peace of mind, all new properties come with a 10-year build warranty.

Green living

For St George, sustainability isn't simply the latest buzzword. We are committed to creating a better environment within our developments and in the areas that surround them. That's why we build on brownfield sites whenever we can, bringing new life to disused and unloved spaces. We take care to protect the natural environment and enhance biodiversity. All our homes are designed to reduce water and energy consumption, and to enable residents to recycle waste.

Commitment to the future

When we plan a development, we take a long-term view of how the community we create can thrive in years to come. Our aim is to permanently enhance the neighbourhoods in which they are located, through intelligent design, quality landscaping, sympathetic architecture or restoration, and high standards of sustainability. We don't just build for today; we build for the future too.

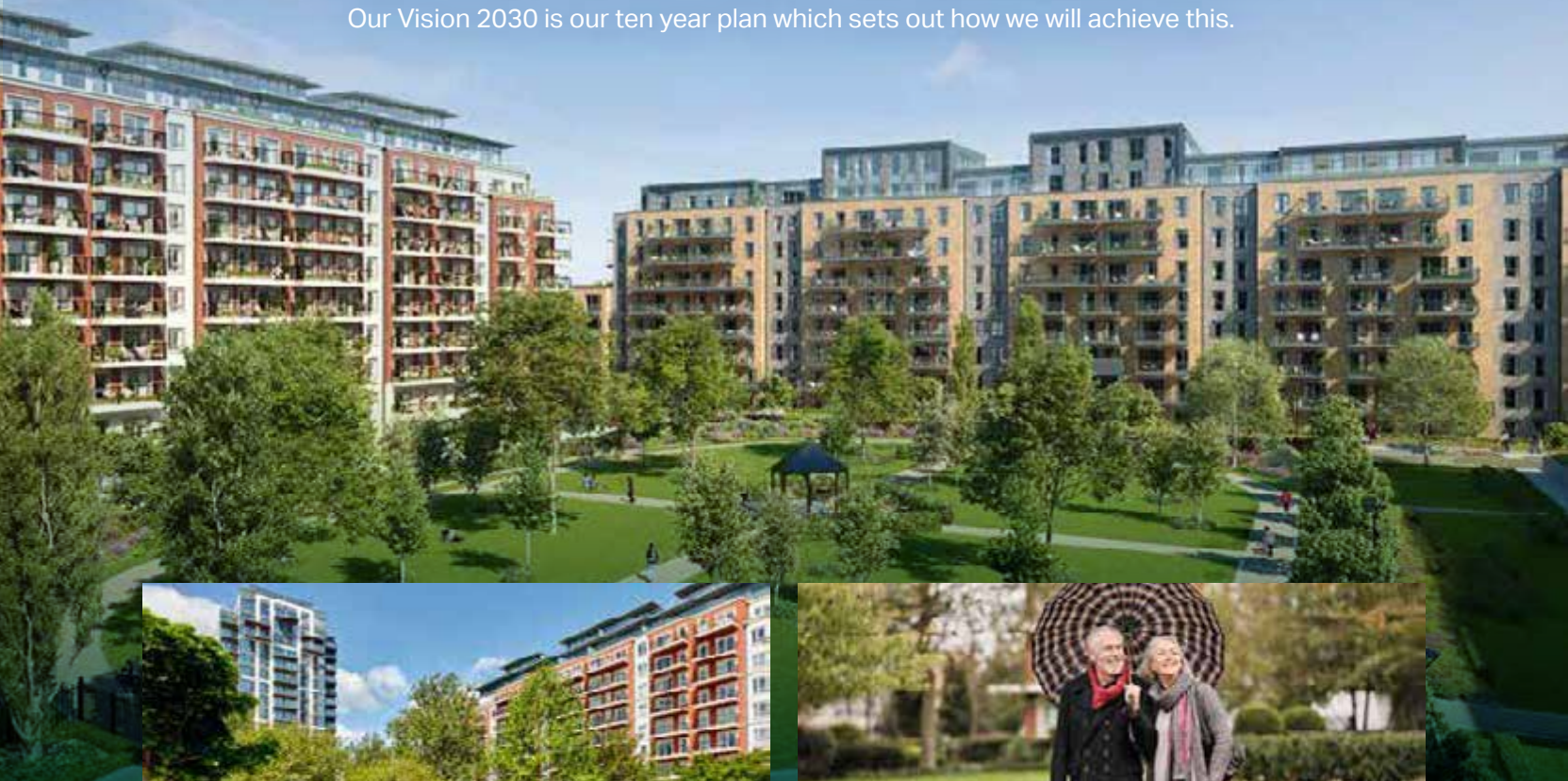


Transforming tomorrow

At Berkeley Group our passion and purpose is to build quality homes, strengthen communities and improve people's lives. We are innovating, pushing boundaries and taking action to ensure we have a long-term, positive impact that is good for our customers, the communities we touch, our business and the world around us.

We transform underused sites into exceptional places and we're also transforming the way we work; embracing technology and raising standards, as we continue to deliver an outstanding customer experience and create high-quality homes that delight our customers.

Our Vision 2030 is our ten year plan which sets out how we will achieve this.



Transforming places

Working with local people and partners we create welcoming and connected neighbourhoods where you can be proud to live.



Transforming lifestyles

Taking action on climate change and giving you ways to live more sustainably. We're building efficient homes that use less energy over their lifetime, with sustainable travel choices on the doorstep.



Transforming nature

Creating beautiful places with habitats that help nature to thrive, meaning that every site is left with more nature than when we began.



Transforming futures

Helping people to reach their potential through apprenticeships and training, and programmes supported by the Berkeley Foundation.





SUSTAINABILITY

This is how we are ensuring sustainability across our St George developments.

People, planet, prosperity

Sustainability is fundamental to Berkeley's ethos. In simple terms, we want to ensure the long-term health, wellbeing and prosperity of people and the planet. There are a range of ways we are managing and minimising the environmental impact of our operations and delivery of homes and communities.

Nature and biodiversity

Parkland, trees, flowers, green roofs, ponds, hedges, gardens – these are the fundamentals of a thriving natural environment that can be enjoyed by everyone. They are all part of our commitment to net biodiversity gain on our developments. We create natural habitats that encourage wildlife to flourish.

Waste and recycling

We actively encourage all residents to reduce their waste wherever possible. In addition to external recycling bins, we provide integrated recycling bins in kitchens to make it easier to separate and recycle waste.

Water efficiency

Our homes are designed to high water efficiency standards and are fitted with dual flush WCs, and low-flow taps and showerheads which use less water without compromising convenience and comfort. We also suggest simple steps to reduce water consumption, such as not leaving taps running unnecessarily.

Energy efficiency

Efficient use of electricity and gas helps lower fuel bills and reduces carbon emissions. Our homes have been designed to use less energy than a standard home. They have enhanced levels of thermal insulation and air-tightness, and all lighting is low energy.

Noise reduction

We can't eliminate noise, but we consider the impact of noise in the design of our homes. We consider external noise, such as from nearby roads, and internal noise including the transfer between rooms and floors. We incorporate measures to reduce the different types of noise wherever possible to create a quieter environment.

Clean air

It is hard to avoid polluted air, particularly in our cities. Throughout our developments we have planted trees, shrubs and flower beds to help create a cleaner air environment. Within our homes we provide mechanical ventilation to filter the internal air.

Future-proof design

From the early stages of design, we assess how our homes will stand up to the future effects of climate change, such as how they will be affected by higher summer temperatures, periods of drought, or more extreme rainfall. We are constantly researching how we can ensure our homes and developments are more resilient to these extremes.

WHAT IS MYHOME PLUS?

MyHome Plus is a new online service that is designed to help you manage key aspects of your new home at any time from anywhere around the world.



BUYING PROCESS

This section provides you with a step-by-step guide to the buying process from reservation through to completion, moving in and warranty. At each milestone, the buying process section advises on the next steps so that you can be absolutely clear on your current position and what to expect next.

1. FILING CABINET

In the filing cabinet section you can access documentation relating to your new home immediately at your own convenience.

2. MEET THE TEAM

This section provides an introduction to the team that will be working with you throughout your journey and details their individual roles. You can email any member of the team directly via this section.

3. OPTIONS & CHOICES SELECTION

We are able to offer some choices on certain internal finishes of your new home. Whether this option is available to you will depend on what stage of construction the property has reached at the time of you making your reservation. See the next steps section for further detail on this.

4. CONSTRUCTION PROGRESS

Under this section, regular updates on the construction of your new property will be provided, keeping you up to date on the progress on site and the local area. Your Customer Service Manager will issue regular newsletters and photographs to this section throughout your journey.

NEXT STEPS

- 1 Your Sales Consultant will send you a link that you will need to activate to access MyHome Plus. The link will require you to set a password for access.
- 2 Customer Service will then be in touch to invite you into our Show Apartment to view the interior selections available for the internal finishes that you have an option to select. If you cannot make it to the appointment, the options can be discussed over the telephone and selected via MyHome Plus. Customer Service will need to receive your choices selection by the deadline date, which will be given in advance.

AT YOUR SERVICE

From your first visit to the Beaufort Park Show Apartments and Marketing Suite through to completion of your new home and subsequent warranty period, St George is here to provide an exceptional personal service.

It's our team's special touches that make those months of anticipation a truly exciting time. We will provide you with regular progress updates throughout the construction of the apartment. We will also help you find your style among the bespoke interior design options for your kitchen, bathroom and flooring, via our dedicated selection process.

You can take a guided tour of Beaufort Park and your new home during the construction phase.

When your moving date arrives, we will be there to present your keys and provide a full demonstration of your apartment. Our dedicated service and warranty extends for a further two years after you move in.

CLICK HERE TO
ARRANGING A VIEWING
OR VIRTUAL TOUR

CONTACT DETAILS

+44 (0)20 8511 8600
sales@beaufortpark.co.uk
beaufortpark.co.uk



The information in this document is indicative and is intended to act as a guide only as to the finished product. Accordingly, due to St George's policy of continuous improvement, the finished product may vary from the information provided. These particulars should not be relied upon as statements of fact or representations and applicants must satisfy themselves by inspection or otherwise as to their correctness. This information does not constitute a contract or warranty. Foxglove House is a marketing name and will not necessarily form part of the approved postal address. Applicants are advised to contact St George to ascertain the availability of any particular property. H044/41CA/081121. Purchasing uncompleted properties located outside Hong Kong is complicated and contains risk. You should review all relevant information and documents carefully. If in doubt, please seek independent professional advice before making a purchase decision. Planning permission number: H/04672/14, 18/3505/NMA, W00198AA/04. Borough/council issuing permission: London Borough of Barnet. Acquiring interest: 999-year leasehold interest from December 2005.



Sign in by visiting berkeleygroup.co.uk/my-home/sign-in



beaufortpark.co.uk