

THE GARDEN COLLECTION

Fairbank

APARTMENTS

Beaufort Park

- WELCOME TO BEAUFORT PARK Page 1
- THE GARDEN COLLECTION Page 3
- MODERN LONDON LIVING Page 4

Fairbank Apartments

- SITE PLAN Page 8
- HISTORY Page 10
- COMMUNITY Page 14
- RESIDENTS' FACILITIES Page 18
- LOCAL AREA Page 22
- CONNECTIVITY Page 26
- EDUCATION Page 30
- FLOORPLANS Page 35
- SPECIFICATION Page 78

St George Quality

- ST GEORGE Page 92
- OUR VISION Page 93
- MYHOME PLUS Page 96
- FOR MORE INFORMATION Page 97



Computer generated image depicts Fairbank Apartments Internal Courtyard and is indicative only



Computer generated image depicts Beaufort Square Parkland and is indicative only

WELCOME TO BEAUFORT PARK

The story of Beaufort Park is forever evolving – from its historic origins as the site of the world's first airfield to today's vibrant neighbourhood.

Situated in North West London, Beaufort Park is well connected, just a few stops away from Hampstead and Camden.



Beaufort Square

THE GARDEN COLLECTION

Overlooking the verdant Beaufort Square and surrounded by green space, these homes have quality finishes and stylish interiors, perfect for today's Londoner.

Set in 25 acres, with a landscaped parkland at its heart, Beaufort Park is leading the regeneration within this area of North West London, delivered through the St George bold vision and world-class designs.

BEAUFORT
PARK
London NW9



THIS IS MODERN LONDON LIVING

Discover a neighbourhood designed with the modern resident in mind. These beautiful homes boast exclusive on-site facilities, speedy connections to the city centre and landscaped green spaces.

FAIRBANK APARTMENTS

Fairbank Apartments are an inspiring place to be. Choose a studio, Manhattan, one, two, three or four bedroom apartment. These stylish homes offer spacious, light-filled living spaces with contemporary interiors.

Quality specification homes are accompanied by stunning views over landscaped parkland, courtyard or historical listed watchtower. The exclusive, residents-only spa is home to a large fitness studio, fully-equipped gym, indoor swimming pool, sauna and jacuzzi.

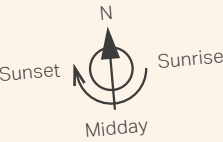
The Fairbank Apartments, named in continuation of the aviation history of the development, provides exclusive city living.



Computer generated image depicts Fairbank Apartments & Foxglove House and is indicative only.

SITE PLAN

- 1 Show Apartments & Marketing Suite
- 2 Landscaped Parkland
- 3 The Spa and Gym
- 4 Jun Ming Xuan Chinese Restaurant
- 5 Italian Restaurant
- 6 Dry Cleaners
- 7 Business/Community Rooms and Estate Management Suite
- 8 Café
- 9 Tesco Express
- 10 The Beaufort Pub
- 11 Bright Horizons
- 12 Hairven Hair & Beauty
- 13 Benham & Reeves Residential Lettings
- 14 Middlesex University
- 15 Hannah London Hair and MediSpa
- 16 Dentist
- 17 Japanese Convenience Store
- 18 Areaworks
- 19 Playground



The site plan is indicative only and subject to change. In line with our policy of continuous improvement we reserve the right to alter the layout, building style, landscaping and specification at any time without notice. February 2021. All computer generated images are indicative only.



BEAUFORT PARK'S GLORIOUS PAST

The area has hosted a number of the world's firsts over the years, including the first successful hydrogen balloon flight, aerial derby and aerial loop-the-loop.

Claude Grahame-White was one of England's premiere pilots, who initially found fame racing Frenchman Louis Paulhan from Hendon to Manchester. His reputation grew when he won the Gordon Bennet Aviation Cup in New York, and landed his Farman biplane on a road near the White House, where he was applauded rather than arrested.

In 1911, he took control of the land around Beaufort Park to create the world's first airfield – Hendon Aerodrome. He started a flight school, took the famous author H. G. Wells for a spin in 1912 and launched the great Hendon Air Shows.

As flying became more familiar, it looked as though his aerodrome would become 'the Charing Cross of international air routes'. The airfield's focus gradually shifted towards the military, and civilian flights were moved first to Croydon and eventually to Heathrow.

Today, Hendon Aerodrome is celebrated at the Royal Air Force Museum, including Grahame-White's original Watchtower, located adjacent to Beaufort Park. The museum is a huge attraction and continues to celebrate the story of British aviation in North West London.

Bentfield Hucks' first loop-the-loop was celebrated with an upside-down dinner, with tables arranged in a loop, and a menu that started with dessert and finished with the starter.





Aircraft on display at the RAF Museum, Hendon.



The Watchtower, Beaufort Park

BRITISH FIRSTS FOR THE RAF LONDON

- Claude Grahame-White founded the Hendon Aerodrome which was first opened in 1911
- From his small factory, Claude Grahame-White designed and manufactured aircrafts and created an aerodrome community with purpose-built housing and London's first flying school was opened in 1911
- First airmail service from Hendon to Windsor in September 1911. Over 100,000 letters and cards were carried
- First night flying display was staged on the 26th September 1912
- First loop-the-loop was celebrated by an upside-down dinner in January 1914 with tables arranged in the form of a loop and a menu that started with dessert and ended with the starter!
- First parachute descent from an aeroplane was made by Mr W. Newell on Saturday 9th May 1914



Aircraft being assembled, Grahame-White Factory, Beaufort Park



Claude Grahame-White, Hendon Air Show, 1912

SPACE TO BREATHE

A home is more than a place to live. It should be a place to build connections. Beaufort Park has a thriving social scene. Meet friends in the coffee shop, go for food in the local restaurants or simply relax in the park. Find workspace in Areaworks, exercise in the on-site gym or unwind in The Spa.



Open spaces to enjoy



A run in the local park

Beaufort Park's beautifully landscaped grounds are a great space for unwinding.

Whether you want to take some exercise or relax in the sun, the continental-style courtyards, green space and manicured gardens offer a picturesque setting.

The park has been known to host the popular Concert in the Park, where residents meet others within the community and watch musical performances of every genre, from jazz to steel bands, funk to opera.



A place to call home



After-work drinks with colleagues

TIME TO UNWIND

Everyone takes their coffee differently. Our coffee shop, can deliver your choice to any Beaufort Park address. Whether you want a cappuccino in bed or a mid-morning flat white on your balcony, put in your order and enjoy it alongside a host of pastries and other snacks.

The Beaufort Pub offers a great meeting space for catching up with friends and family over a Sunday roast or going for after-work drinks with colleagues.



Relax and reset



Beaufort Park Spa

SPA AND SWIMMING POOL

London life can be exciting but busy. That’s why Beaufort Park has an impressive on-site spa, giving you the chance to indulge and take a little downtime. Complete with a pool, jacuzzi, treatment room, sauna and steam room, The Spa truly allows you to relax and pamper yourself.



The gym
20



Areaworks, co-working space

STATE-OF-THE-ART FITNESS STUDIO

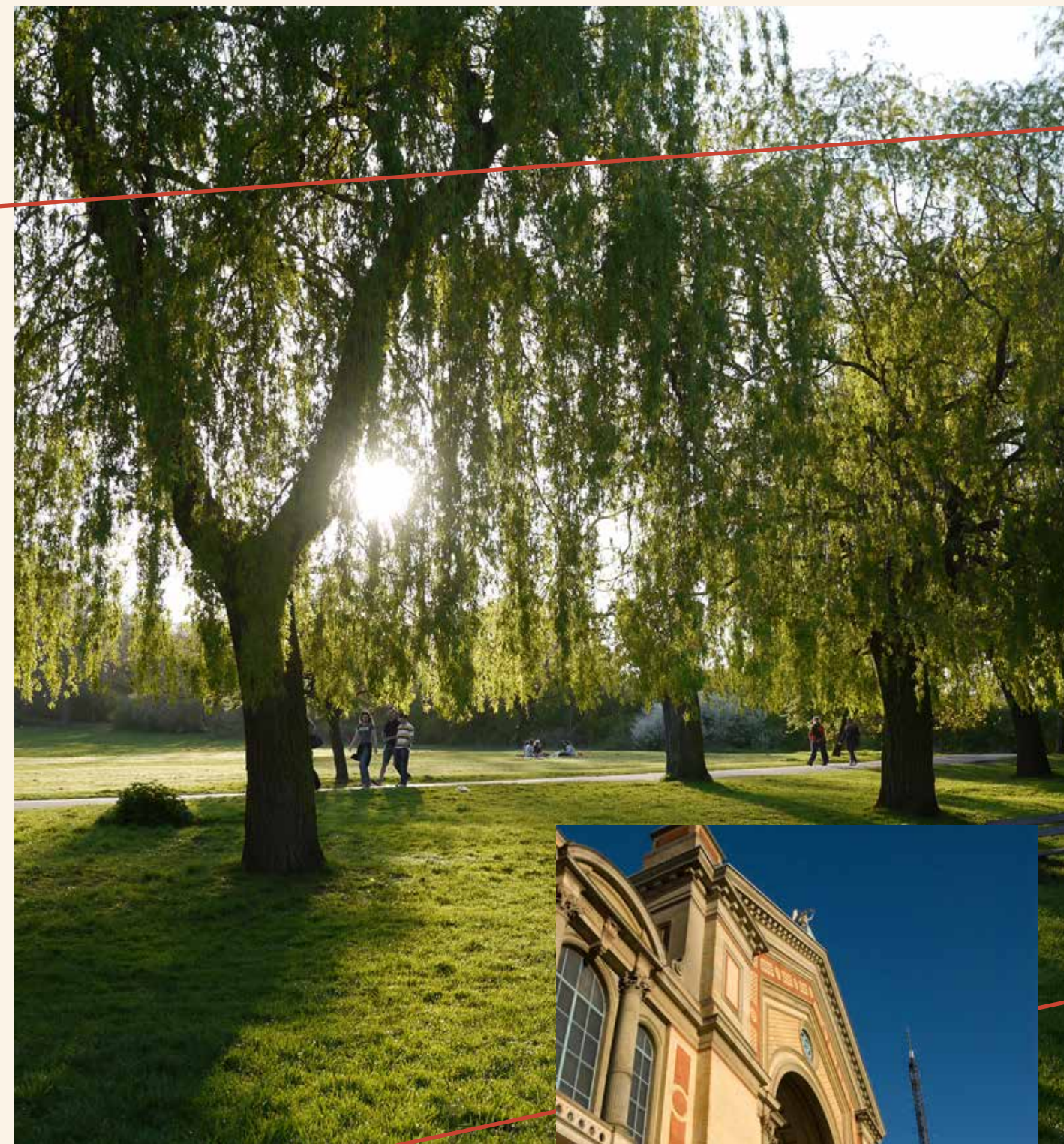
The fully-equipped gym means there's no need to travel for a workout. With new, state-of-the-art cardiovascular machines including treadmills, three different types of exercise bikes and a cross trainer, it's the perfect place to work up a sweat.

Areaworks offers a local workspace[^] where people and businesses can work and collaborate. Take advantage of the breakout spaces, private offices and coffee shop to create the working environment you need. Be inspired by regular workshops, expert talks and networking events.

[^]At an additional cost.

UNIQUE NORTH WEST LONDON

North West London offers a unique combination – a welcoming and intimate village atmosphere with all the buzz of the City.



Hampstead Heath

This area's particular charm makes it well suited to every kind of resident – both locals and newcomers, those starting out and those settling down.

Spend a morning in fashionable Hampstead. Visit its varied boutique shops and chic coffee shops. Explore the wildlife, recreation and stunning views of Hampstead Heath. Discover the colourful narrowboats of Regent's Canal and the varied markets of Camden. And in the evening, head to a gig at Alexandra Palace.



Alexandra Palace

THE CAPITAL ON YOUR DOORSTEP

Beaufort Park is a short journey from the vibrant heart of London city centre. Stay close to the nightlife, shopping, business and entertainment at the capital's heart. At once modern and historic, local and international, London offers something for everyone.



Streets of North London

CULTURE

From intimate clubs to concert venues like the O2 Arena and the spectacular Royal Albert Hall, London hosts evening entertainment for every taste.

DINING

From the boutique restaurants of Soho and Fitzrovia to the trendy eateries of the east, London's gastronomic delights are easily reached from Beaufort Park.

SHOPPING

Whether you prefer big-name brands or high-street fashion, London is the place to shop. Jump on the Northern line to reach both hidden treasures and old favourites such as Harrods or take a short five-minute drive to Brent Cross for some retail therapy.

SPECTACLE

The capital is renowned for its exciting architecture and scenery, modern and classical. Among these are London's nine Royal Parks and the endlessly changing vista of the River Thames.



Bang Bang Oriental

TASTE OF THE EAST

Bang Bang Oriental Foodhall, London's newest and largest Asian food hall, is located a short distance from Beaufort Park.

Bang Bang Oriental Foodhall is home to 33 individual pan-Asian food traders serving everything from sushi to laksa, Thai curries to steamed buns. This is the perfect spot to spend a weekend afternoon with friends and family.



Bang Bang Oriental

Noodles in the food hall



King's Cross St Pancras

KING'S CROSS

A short tube ride away from Beaufort Park, King's Cross is easily accessed via the Northern line. Its proximity places countless job opportunities moments away.



King's Cross Station

LONDON'S NEW TECH HUB

Google have set up new headquarters in King's Cross, welcoming 7,000 new professionals. Other nearby creative and media businesses include Facebook, Universal Music, YouTube and Nike.



STAY CONNECTED

London’s transport network is fast and reliable, placing the city and beyond right on your doorstep.



Less than a mile from Beaufort Park, the Northern line runs through Colindale tube station, transporting you to King’s Cross St. Pancras in 21 minutes and Leicester Square in 27 minutes. The 24-hour weekend tube makes commuting and going out much easier.

For travelling outside of London, Hendon Central connects to the National Rail network, while the Eurostar can be boarded from King’s Cross St. Pancras. Additionally, bus connections and the A1, M1 and M25 are just moments away.

Colindale Station ⊖	Beaufort Park RAF Museum Middlesex University Bang Bang Oriental Foodhall
Hendon Central 3 mins ⊖	Mainline services to Central London and London Luton Airport
Brent Cross 5 mins ⊖	Brent Cross Shopping Centre
Hampstead 12 mins ⊖	Hampstead Village and Hampstead Heath
Camden Town 19 mins ⊖	Camden Market ZSL London Zoo The Roundhouse Theatre
King’s Cross St. Pancras 21 mins ⊖ ⊕ ⊗ ⊙ ⊕ ⊕ ⊕ ⊕	Google YouTube Facebook British Library University of the Arts London Eurostar Paris – 2 hours 25 minutes
Oxford Circus 25 mins ⊕ ⊕ ⊕	Hyde Park Buckingham Palace The British Museum
Leicester Square 27 mins ⊕ ⊕	West End Theatre District Covent Garden Chinatown Bond Street

Timings are approximate. Source www.tfl.gov.uk



* Map representative and not to scale

OUTSTANDING EDUCATION

Beaufort Park is within easy reach of many of London's finest schools, with enough choice for everyone. And from UCL to Imperial College, London's universities are among the finest in the world.



Studying at Areaworks

PRIMARY SCHOOLS

- 1 Goldbeaters Primary School
- 2 St Joseph's Catholic Primary School
- 3 The Hyde School
- 4 Barnfield Primary School
- 5 Orion Primary School

SECONDARY SCHOOLS

- 1 Hasmonean High School
- 2 Hendon School
- 3 Canons High School

PRIVATE SCHOOLS

- 1 The Haberdashers' Aske's Boys' School
- 2 The Haberdashers' Aske's School for Girls
- 3 Mill Hill School
- 4 Harrow School

LONDON UNIVERSITIES

- 1 Middlesex University
- 2 UCL – University College London
- 3 Imperial College London
- 4 Central Saint Martins, University of the Arts London
- 5 CASS Business School, City, University of London



1, 2, 3 & 4 BEDROOM APARTMENTS
AND PENTHOUSES

The Studio, Manhattan, 1, 2, 3 & 4 bedroom apartments have been designed for modern living, with light-filled spaces and contemporary interiors.

Each apartment has a balcony or terrace with views over Beaufort Park or the internal courtyard for your exclusive use.



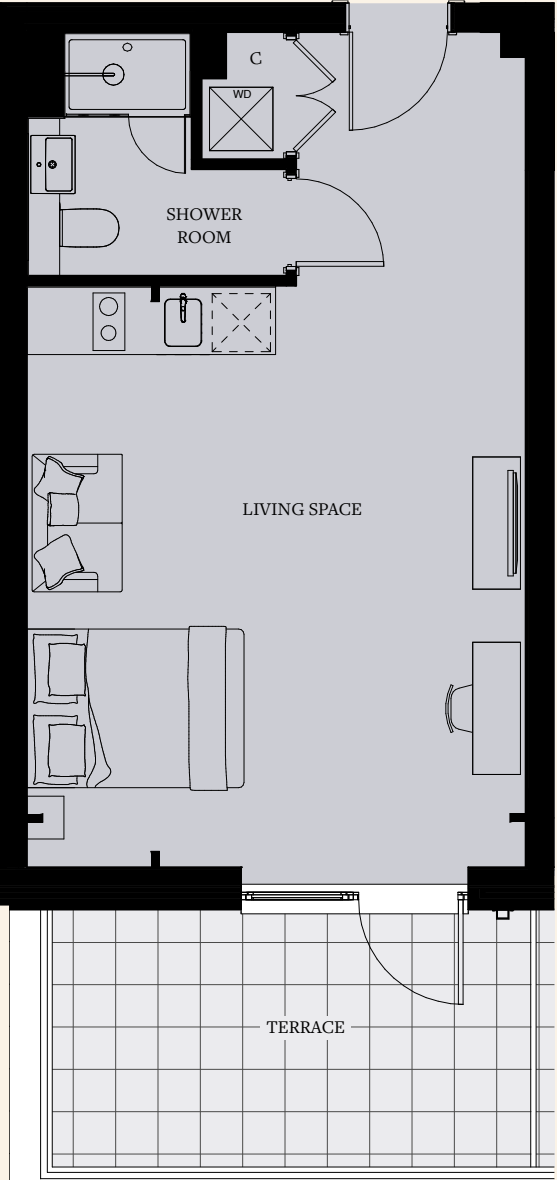
THE AVIATOR SPECIFICATION

The Aviator Specification is more than a design statement. It's an aesthetic that draws on the area's aviation history, through oak detailing and natural tones, while celebrating Beaufort Park's classic quality.

Studio Floorplan

FROM 323 SQ FT TO 400 SQ FT

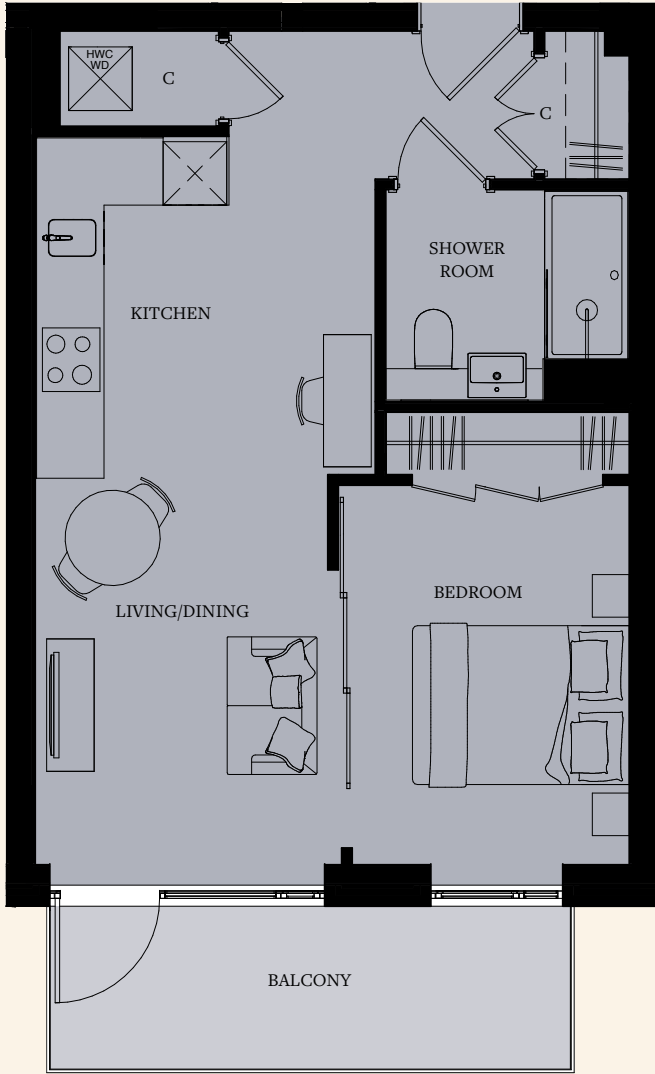
The design of the studio apartment has been crafted with careful consideration to deliver efficient use of space and a light, airy feeling. A wealth of natural light floods the studios from the balcony / terrace that comes available with all apartments.



Manhattan

FROM 452 SQ FT TO 516 SQ FT

The one-bedroom Manhattan apartment has been designed as an open-plan layout to maximise the space available, creating flexible living. The style statement continues through the sliding doors and into the double bedroom which comes with fitted wardrobes.



1 Bedroom

FROM 538 SQ FT TO 647 SQ FT

The spacious open-plan kitchen and living area are bathed in natural light from the windows and the elegant balcony leading off the living room. Stylish and meticulously finished, the shower room and separate well-proportioned bedroom with integrated wardrobes form the perfect place to relax.



2 Bedroom

FROM 753 SQ FT TO 887 SQ FT

Beautiful proportions and flexibility provide the perfect setting for entertainment and relaxation in this two-bedroom apartment. Both bathrooms feature high-quality fixtures and fittings and a modern colour palette.



3 Bedroom

FROM 1040 SQ FT TO 1157 SQ FT

This three-bedroom apartment is the epitome of modern open-plan living. The master bedroom benefits from a fitted dressing area adjacent to the ensuite bathroom. The elegant bathroom uses natural textures in a palette of warm greys to provide a contemporary and modern environment.



GROUND FLOOR



FIRST FLOOR



SECOND FLOOR



ACCOMMODATION FINDER

Apt. No.	Floor	Bedrooms	Type
2505	G	Studio	
2506	G	Studio	
2509	G	Studio	
2513	G	Studio	
2514	G	Studio	
2515	G	Studio	
2516	G	Studio	
2520	G	Studio	
2523	1	Studio	
2524	1	Studio	
2525	1	Studio	
2526	1	Studio	
2531	1	Studio	
2532	1	Studio	
2533	1	Studio	
2534	1	Studio	
2537	1	Studio	
2544	2	Studio	
2545	2	Studio	
2546	2	Studio	
2556	2	Studio	
2574	3	Studio	
2592	4	Studio	

Apt. No.	Floor	Bedrooms	Type
2558	3	1 Bedroom	
2559	3	1 Bedroom	
2561	3	1 Bedroom	
2564	3	1 Bedroom	
2565	3	1 Bedroom	
2567	3	1 Bedroom	
2571	3	1 Bedroom	
2575	3	1 Bedroom	
2576	4	1 Bedroom	
2577	4	1 Bedroom	
2579	4	1 Bedroom	
2582	4	1 Bedroom	
2583	4	1 Bedroom	
2585	4	1 Bedroom	
2589	4	1 Bedroom	
2593	4	1 Bedroom	
2599	5	1 Bedroom	
2600	5	1 Bedroom	
2612	6	1 Bedroom	Elite
2613	6	1 Bedroom	Elite
2624	7	1 Bedroom	Elite
2625	7	1 Bedroom	Elite
2633	8	1 Bedroom	Elite

Apt. No.	Floor	Bedrooms	Type
2608	6	2 Bedroom	Elite
2609	6	2 Bedroom	Elite
2610	6	2 Bedroom	Elite
2611	6	2 Bedroom	Elite
2614	6	2 Bedroom	Elite
2615	6	2 Bedroom	Elite
2619	6	2 Bedroom	Elite
2621	7	2 Bedroom	Elite
2622	7	2 Bedroom	Elite
2623	7	2 Bedroom	Elite
2626	7	2 Bedroom	Elite
2627	7	2 Bedroom	Elite
2631	7	2 Bedroom	Elite

2632	8	2 Bedroom	Premier
------	---	-----------	---------

2604	5	3 Bedroom	Premier
2605	5	3 Bedroom	Premier
2616	6	3 Bedroom	Premier
2617	6	3 Bedroom	Premier
2618	6	3 Bedroom	Premier
2628	7	3 Bedroom	Premier
2629	7	3 Bedroom	Premier
2630	7	3 Bedroom	Premier
2635	8	3 Bedroom	Premier
2636	8	3 Bedroom	Premier

2634	8&9	4 Bedroom	Premier
------	-----	-----------	---------

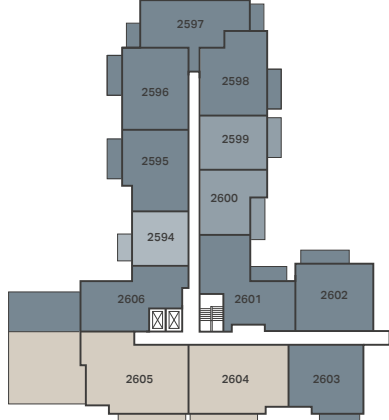
THIRD FLOOR



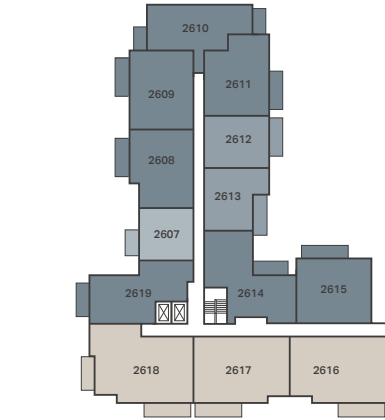
FOURTH FLOOR



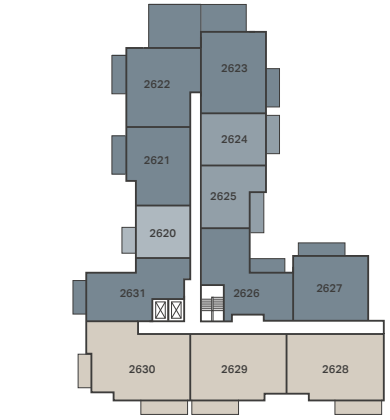
FIFTH FLOOR



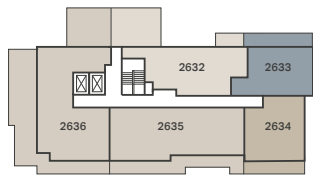
SIXTH FLOOR



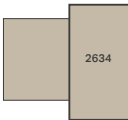
SEVENTH FLOOR



EIGHTH FLOOR



NINTH FLOOR



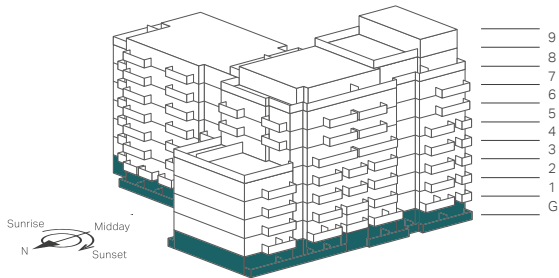
APARTMENT KEY

- Studio Apartment
- Manhattan 1 Bedroom Apartment
- 1 Bedroom Apartment
- 2 Bedroom Apartment
- 2 Bedroom Premier Apartment
- 3 Bedroom Premier Apartment
- 4 Bedroom Premier Penthouse

2518	G	Manhattan	
2519	G	Manhattan	
2527	1	Manhattan	
2529	1	Manhattan	
2530	1	Manhattan	
2550	2	Manhattan	
2568	3	Manhattan	
2586	4	Manhattan	
2594	5	Manhattan	
2607	6	Manhattan	Elite
2620	7	Manhattan	Elite

2541	2	2 Bedroom	
2543	2	2 Bedroom	
2548	2	2 Bedroom	
2551	2	2 Bedroom	
2552	2	2 Bedroom	
2554	2	2 Bedroom	
2555	2	2 Bedroom	
2560	3	2 Bedroom	
2562	3	2 Bedroom	
2563	3	2 Bedroom	
2566	3	2 Bedroom	
2569	3	2 Bedroom	
2570	3	2 Bedroom	
2572	3	2 Bedroom	
2573	3	2 Bedroom	
2578	4	2 Bedroom	
2580	4	2 Bedroom	
2581	4	2 Bedroom	
2584	4	2 Bedroom	
2587	4	2 Bedroom	
2588	4	2 Bedroom	
2590	4	2 Bedroom	
2591	4	2 Bedroom	
2595	5	2 Bedroom	
2596	5	2 Bedroom	
2597	5	2 Bedroom	
2598	5	2 Bedroom	
2601	5	2 Bedroom	
2602	5	2 Bedroom	
2603	5	2 Bedroom	Elite
2606	5	2 Bedroom	

2507	G	1 Bedroom	
2508	G	1 Bedroom	
2510	G	1 Bedroom	
2511	G	1 Bedroom	
2512	G	1 Bedroom	
2517	G	1 Bedroom	
2521	1	1 Bedroom	
2522	1	1 Bedroom	
2528	1	1 Bedroom	
2535	1	1 Bedroom	
2536	1	1 Bedroom	
2538	1	1 Bedroom	
2539	2	1 Bedroom	
2540	2	1 Bedroom	
2542	2	1 Bedroom	
2547	2	1 Bedroom	
2549	2	1 Bedroom	
2553	2	1 Bedroom	
2557	2	1 Bedroom	



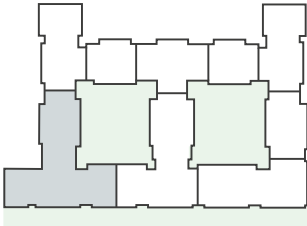
● 2505 – Studio	32.1 sq m	346 sq ft
Living Space/Bedroom	5.74m x 3.95m	18' 10" x 13' 0"
Terrace	6.0 sq m	65 sq ft
● 2506 – Studio	30.6 sq m	329 sq ft
Living Space/Bedroom	5.84m x 3.84m	19' 2" x 12' 7"
Terrace	4.9 sq m	53 sq ft
● 2507 – 1 Bedroom	50.2 sq m	540 sq ft
Living Space/Kitchen	6.74m x 3.69m	22' 1" x 12' 1"
Bedroom	3.23m x 2.85m	10' 7" x 9' 4"
Terrace	14.4 sq m	155 sq ft
● 2508 – 1 Bedroom	50.5 sq m	544 sq ft
Living Space/Kitchen	5.59m x 4.20m	18' 4" x 13' 9"
Bedroom	3.36m x 3.06m	11' 0" x 10' 0"
Terrace	9.1 sq m	98 sq ft
● 2509 – Studio	30.0 sq m	323 sq ft
Living Space/Bedroom	4.94m x 4.16m	16' 2" x 13' 8"
Terrace	8.1 sq m	87 sq ft
● 2510 – 1 Bedroom	50.4 sq m	543 sq ft
Living Space/Kitchen	5.84m x 4.97m	19' 2" x 16' 4"
Bedroom	3.60m x 3.05m	11' 10" x 10' 0"
Terrace	11.3 sq m	122 sq ft
● 2511 – 1 Bedroom	60.1 sq m	647 sq ft
Living Space/Kitchen	5.86m x 5.75m	19' 3" x 18' 10"
Bedroom	4.66m x 3.08m	15' 3" x 10' 1"
Terrace	7.3 sq m	79 sq ft
● 2512 – 1 Bedroom	51.0 sq m	549 sq ft
Living Space/Kitchen	6.54m x 3.95m	21' 5" x 13' 0"
Bedroom	3.76m x 3.75m	12' 4" x 12' 4"
Terrace	17.2 sq m	185 sq ft

● 2513 – Studio	30.2 sq m	325 sq ft
Living Space/Bedroom	5.38m x 3.91m	17' 8" x 12' 10"
Terrace	6.6 sq m	71 sq ft
● 2514 – Studio	30.4 sq m	327 sq ft
Living Space/Bedroom	5.38m x 3.91m	17' 8" x 12' 10"
Terrace	6.3 sq m	68 sq ft
● 2515 – Studio	30.0 sq m	323 sq ft
Living Space/Bedroom	5.23m x 3.94m	17' 2" x 12' 1"
Terrace	6.3 sq m	68 sq ft
● 2516 – Studio	37.0 sq m	398 sq ft
Living Space/Bedroom	6.11m x 3.93m	20' 1" x 12' 11"
Terrace	6.8 sq m	73 sq ft
● 2517 – 1 Bedroom	50.1 sq m	539 sq ft
Living Space/Kitchen	6.74m x 3.28m	22' 1" x 10' 9"
Bedroom	4.55m x 2.75m	14' 11" x 9' 0"
Terrace	12.3 sq m	132 sq ft
● 2518 – Manhattan	43.9 sq m	473 sq ft
Living Space/Kitchen	8.24m x 2.85m	27' 0" x 9' 4"
Bedroom	3.24m x 2.76m	10' 8" x 9' 1"
Terrace	12.5 sq m	135 sq ft
● 2519 – Manhattan	44.4 sq m	478 sq ft
Living Space/Kitchen	8.24m x 2.90m	27' 0" x 9' 6"
Bedroom	3.24m x 2.76m	10' 8" x 9' 1"
Terrace	12.4 sq m	133 sq ft
● 2520 – Studio	32.1 sq m	346 sq ft
Living Space/Bedroom	5.74m x 3.95m	18' 10" x 13' 0"
Terrace	7.9 sq m	85 sq ft

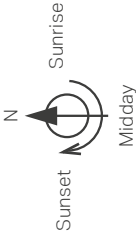
APARTMENT KEY

- Studio Apartment
- Manhattan 1 Bedroom Apartment
- 1 Bedroom Apartment

FAIRBANK APARTMENTS



- 2 Ring Hob
- 4 Ring Hob
- Oven
- Full height fridge/freezer
- Under counter fridge/freezer
- Water cylinder and washer/dryer below
- Water cylinder
- Washer/dryer
- C Cupboard
- R Refuse



View north towards
RAF Museum and Listed
Watchtower

View north towards
RAF Museum and Listed
Watchtower

View east
over Royce Avenue

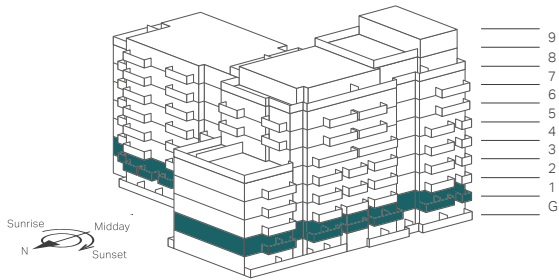
Views south west
over Landscaped Park

Views west
over Landscaped Park

Floorplans shown for Fairbank Apartments are approximate measurements only. Exact layout and sizes may vary. All measurements may vary within a tolerance of 5%. Car park shown for illustrative purposes only. Car parking available subject to additional cost.



Computer generated image of Farington House is indicative only



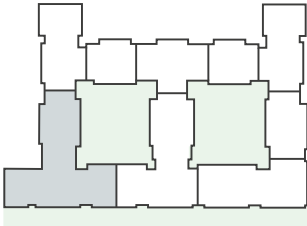
● 2521 – 1 Bedroom	60.1 sq m	647 sq ft
Living Space / Kitchen	5.86m x 5.75m	19' 3" x 18' 10"
Bedroom	4.66m x 3.08m	15' 3" x 10' 1"
Balcony	4.8 sq m	51 sq ft
● 2522 – 1 Bedroom	51.0 sq m	549 sq ft
Living Space / Kitchen	6.54m x 3.95m	21' 5" x 13' 0"
Bedroom	3.76m x 3.75m	12' 4" x 12' 4"
Balcony	6.2 sq m	67 sq ft
● 2523 – Studio	30.2 sq m	325 sq ft
Living Space / Bedroom	5.38m x 3.91m	17' 8" x 12' 10"
Balcony	4.8 sq m	51 sq ft
● 2524 – Studio	30.4 sq m	327 sq ft
Living Space / Bedroom	5.38m x 3.91m	17' 8" x 12' 10"
Balcony	4.8 sq m	51 sq ft
● 2525 – Studio	30.0 sq m	323 sq ft
Living Space / Bedroom	5.23m x 3.94m	17' 2" x 12' 1"
Balcony	4.8 sq m	51 sq ft
● 2526 – Studio	30.0 sq m	323 sq ft
Living Space / Bedroom	5.13m x 3.93m	16' 10" x 12' 11"
Balcony	4.8 sq m	51 sq ft
● 2527 – Manhattan	47.9 sq m	516 sq ft
Living Space / Kitchen	7.64m x 2.89m	25' 1" x 9' 6"
Bedroom	3.34m x 2.75m	10' 11" x 9' 0"
Balcony	3.8 sq m	40 sq ft
● 2528 – 1 Bedroom	50.1 sq m	539 sq ft
Living Space / Kitchen	6.74m x 3.28m	22' 1" x 10' 9"
Bedroom	4.55m x 2.75m	14' 11" x 9' 0"
Balcony	7.3 sq m	79 sq ft
● 2529 – Manhattan	43.9 sq m	473 sq ft
Living Space / Kitchen	8.24m x 2.85m	27' 0" x 9' 4"
Bedroom	3.24m x 2.76m	10' 8" x 9' 1"
Balcony	4.8 sq m	52 sq ft

● 2530 – Manhattan	44.4 sq m	478 sq ft
Living Space / Kitchen	8.24m x 2.90m	27' 0" x 9' 6"
Bedroom	3.24m x 2.76m	10' 8" x 9' 1"
Balcony	4.8 sq m	52 sq ft
● 2531 – Studio	32.1 sq m	346 sq ft
Living Space / Bedroom	5.74m x 3.95m	18' 10" x 13' 0"
Balcony	4.3 sq m	46 sq ft
● 2532 – Studio	30.0 sq m	323 sq ft
Living Space / Bedroom	5.15m x 3.98m	16' 11" x 13' 1"
Terrace	8.3 sq m	89 sq ft
● 2533 – Studio	32.1 sq m	346 sq ft
Living Space / Bedroom	5.74m x 3.95m	18' 10" x 13' 0"
Balcony	4.3 sq m	46 sq ft
● 2534 – Studio	30.6 sq m	329 sq ft
Living Space / Bedroom	5.84m x 3.84m	19' 2" x 12' 7"
Balcony	4.8 sq m	52 sq ft
● 2535 – 1 Bedroom	50.2 sq m	540 sq ft
Living Space / Kitchen	6.74m x 3.69m	22' 1" x 12' 1"
Bedroom	3.23m x 2.85m	10' 7" x 9' 4"
Balcony	4.5 sq m	49 sq ft
● 2536 – 1 Bedroom	50.5 sq m	544 sq ft
Living Space / Kitchen	5.59m x 4.20m	18' 4" x 13' 9"
Bedroom	3.36m x 3.06m	11' 0" x 10' 0"
Balcony	4.3 sq m	47 sq ft
● 2537 – Studio	30.0 sq m	323 sq ft
Living Space / Bedroom	4.94m x 4.16m	16' 2" x 13' 8"
Balcony	4.8 sq m	51 sq ft
● 2538 – 1 Bedroom	50.4 sq m	543 sq ft
Living Space / Kitchen	5.84m x 4.97m	19' 2" x 16' 4"
Bedroom	3.60m x 3.05m	11' 10" x 10' 0"
Balcony	4.8 sq m	51 sq ft

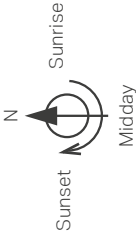
APARTMENT KEY

- Studio Apartment
- Manhattan 1 Bedroom Apartment
- 1 Bedroom Apartment

FAIRBANK APARTMENTS

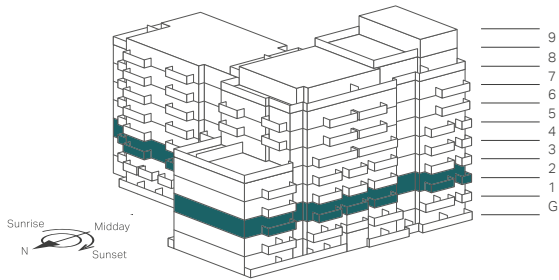


- 2 Ring Hob
- 4 Ring Hob
- Oven
- Full height fridge/freezer
- Under counter fridge/freezer
- Water cylinder and washer/dryer below
- Water cylinder
- Washer/dryer
- C Cupboard
- R Refuse



Floorplans shown for Fairbank Apartments are approximate measurements only. Exact layout and sizes may vary. All measurements may vary within a tolerance of 5%. Car park shown for illustrative purposes only. Car parking available subject to additional cost.





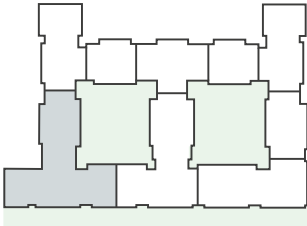
● 2539 – 1 Bedroom	60.1 sq m	647 sq ft
Living Space / Kitchen	5.86m x 5.75m	19' 3" x 18' 10"
Bedroom	4.66m x 3.08m	15' 3" x 10' 1"
Balcony	4.8 sq m	51 sq ft
● 2540 – 1 Bedroom	51.0 sq m	549 sq ft
Living Space / Kitchen	6.54m x 3.95m	21' 5" x 13' 0"
Bedroom	3.76m x 3.75m	12' 4" x 12' 4"
Balcony	6.2 sq m	67 sq ft
● 2541 – 2 Bedroom	74.1 sq m	798 sq ft
Living Space / Kitchen	7.78m x 3.73m	25' 6" x 12' 3"
Bedroom 1	3.24m x 2.90m	10' 8" x 9' 6"
Bedroom 2	4.39m x 2.80m	14' 5" x 9' 2"
Balcony	7.5 sq m	80 sq ft
● 2542 – 1 Bedroom	50.3 sq m	541 sq ft
Living Space / Kitchen	7.53m x 3.27m	24' 8" x 10' 9"
Bedroom	3.24m x 3.25m	10' 8" x 10' 8"
Balcony	7.5 sq m	80 sq ft
● 2543 – 2 Bedroom	70.1 sq m	755 sq ft
Living Space / Kitchen	7.38m x 3.48m	24' 3" x 11' 5"
Bedroom 1	3.05m x 2.80m	10' 0" x 9' 2"
Bedroom 2	3.58m x 2.75m	11' 9" x 9' 0"
Balcony	3.8 sq m	40 sq ft
Terrace	16.6 sq m	179 sq ft
● 2544 – Studio	36.2 sq m	390 sq ft
Living Space / Bedroom	5.10m x 4.94m	16' 9" x 16' 2"
Terrace	13.0 sq m	140 sq ft
● 2545 – Studio	31.4 sq m	338 sq ft
Living Space / Bedroom	4.64m x 4.36m	15' 3" x 14' 4"
Terrace	11.5 sq m	124 sq ft
● 2546 – Studio	37.2 sq m	400 sq ft
Living Space / Bedroom	5.49m x 4.71m	18' 0" x 15' 5"
Terrace	9.6 sq m	103 sq ft
● 2547 – 1 Bedroom	51.2 sq m	551 sq ft
Living Space / Kitchen	5.86m x 4.15m	19' 3" x 13' 7"
Bedroom	4.80m x 3.50m	15' 9" x 11' 6"
Terrace	29.5 sq m	318 sq ft
● 2548 – 2 Bedroom	82.4 sq m	887 sq ft
Living Space / Kitchen	6.46m x 5.84m	21' 2" x 19' 2"
Bedroom 1	3.47m x 2.89m	11' 5" x 9' 6"
Bedroom 2	3.77m x 2.75m	12' 4" x 9' 0"
Terrace	24.1 sq m	259 sq ft

● 2549 – 1 Bedroom	52.3 sq m	563 sq ft
Living Space / Kitchen	7.87m x 3.58m	25' 10" x 11' 9"
Bedroom	4.22m x 3.00m	13' 10" x 9' 10"
Terrace	15.1 sq m	163 sq ft
● 2550 – Manhattan	44.2 sq m	476 sq ft
Living Space / Kitchen	6.87m x 2.76m	22' 6" x 9' 1"
Bedroom	3.58m x 2.75m	11' 9" x 9' 0"
Balcony	12.8 sq m	138 sq ft
● 2551 – 2 Bedroom	70.0 sq m	753 sq ft
Living Space / Kitchen	8.24m x 3.16m	27' 0" x 10' 4"
Bedroom 1	3.00m x 2.76m	9' 10" x 9' 1"
Bedroom 2	4.55m x 2.75m	14' 11" x 9' 0"
Balcony	7.5 sq m	80 sq ft
● 2552 – 2 Bedroom	70.0 sq m	753 sq ft
Living Space / Kitchen	8.14m x 3.17m	26' 8" x 10' 5"
Bedroom 1	3.00m x 2.77m	9' 10" x 9' 1"
Bedroom 2	4.55m x 2.75m	14' 11" x 9' 0"
Balcony	7.5 sq m	80 sq ft
● 2553 – 1 Bedroom	50.4 sq m	543 sq ft
Living Space / Kitchen	6.84m x 3.20m	22' 5" x 10' 6"
Bedroom	4.28m x 2.91m	14' 1" x 9' 7"
Terrace	3.9 sq m	42 sq ft
● 2554 – 2 Bedroom	76.8 sq m	827 sq ft
Living Space / Kitchen	8.14m x 3.69m	26' 8" x 12' 1"
Bedroom 1	3.18m x 2.92m	10' 5" x 9' 7"
Bedroom 2	4.64m x 2.75m	15' 3" x 9' 0"
Balcony	7.5 sq m	80 sq ft
● 2555 – 2 Bedroom	78.1 sq m	841 sq ft
Living Space / Kitchen	8.14m x 3.86m	26' 8" x 12' 8"
Bedroom 1	3.79m x 2.90m	12' 5" x 9' 6"
Bedroom 2	3.95m x 2.72m	13' 0" x 8' 11"
Balcony	8.8 sq m	94 sq ft
● 2556 – Studio	34.1 sq m	367 sq ft
Living Space / Bedroom	4.94m x 4.28m	16' 2" x 14' 1"
Balcony	4.8 sq m	51 sq ft
● 2557 – 1 Bedroom	50.4 sq m	543 sq ft
Living Space / Kitchen	5.84m x 4.97m	19' 2" x 16' 4"
Bedroom	3.60m x 3.05m	11' 10" x 10' 0"
Balcony	4.8 sq m	51 sq ft

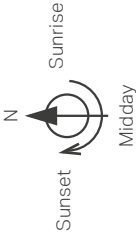
APARTMENT KEY

- Studio Apartment
- Manhattan 1 Bedroom Apartment
- 1 Bedroom Apartment
- 2 Bedroom Apartment

FAIRBANK APARTMENTS

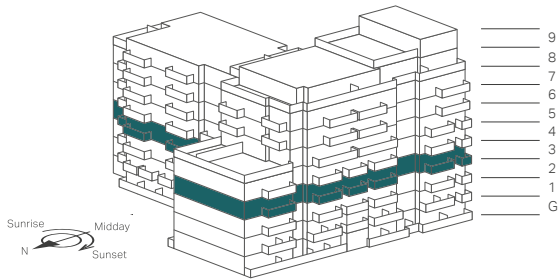


- 2 Ring Hob
- 4 Ring Hob
- Oven
- Full height fridge/freezer
- Under counter fridge/freezer
- Water cylinder and washer/dryer below
- Water cylinder
- Washer/dryer
- Cupboard
- Refuse



Floorplans shown for Fairbank Apartments are approximate measurements only. Exact layout and sizes may vary. All measurements may vary within a tolerance of 5%. Car park shown for illustrative purposes only. Car parking available subject to additional cost.





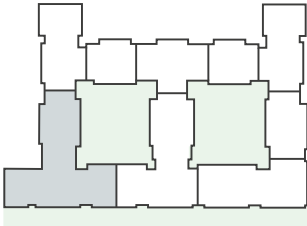
● 2558 – 1 Bedroom	60.1 sq m	647 sq ft
Living Space / Kitchen	5.86m x 5.75m	19' 3" x 18' 10"
Bedroom	4.66m x 3.08m	15' 3" x 10' 1"
Balcony	4.8 sq m	51 sq ft
● 2559 – 1 Bedroom	51.0 sq m	549 sq ft
Living Space / Kitchen	6.54m x 3.95m	21' 5" x 13' 0"
Bedroom	3.76m x 3.75m	12' 4" x 12' 4"
Balcony	6.2 sq m	67 sq ft
● 2560 – 2 Bedroom	74.1 sq m	798 sq ft
Living Space / Kitchen	7.78m x 3.73m	25' 6" x 12' 3"
Bedroom 1	3.24m x 2.90m	10' 8" x 9' 6"
Bedroom 2	4.39m x 2.80m	14' 5" x 9' 2"
Balcony	7.5 sq m	80 sq ft
● 2561 – 1 Bedroom	50.3 sq m	541 sq ft
Living Space / Kitchen	7.53m x 3.27m	24' 8" x 10' 9"
Bedroom	3.24m x 3.25m	10' 8" x 10' 8"
Balcony	7.5 sq m	80 sq ft
● 2562 – 2 Bedroom	70.1 sq m	755 sq ft
Living Space / Kitchen	7.38m x 3.48m	24' 3" x 11' 5"
Bedroom 1	3.05m x 2.80m	10' 0" x 9' 2"
Bedroom 2	3.58m x 2.75m	11' 9" x 9' 0"
Balcony	8.3 sq m	90 sq ft
● 2563 – 2 Bedroom	70.0 sq m	753 sq ft
Living Space / Kitchen	7.74m x 3.51m	25' 5" x 11' 6"
Bedroom 1	3.57m x 3.15m	11' 9" x 10' 4"
Bedroom 2	4.05m x 2.75m	13' 3" x 9' 0"
Balcony	7.5 sq m	80 sq ft
● 2564 – 1 Bedroom	50.0 sq m	538 sq ft
Living Space / Kitchen	6.49m x 3.30m	21' 4" x 10' 10"
Bedroom	4.19m x 2.94m	13' 9" x 9' 8"
Balcony	7.5 sq m	80 sq ft
● 2565 – 1 Bedroom	51.2 sq m	551 sq ft
Living Space / Kitchen	5.86m x 4.15m	19' 3" x 13' 7"
Bedroom	4.80m x 3.50m	15' 9" x 11' 6"
Balcony	7.4 sq m	79 sq ft
● 2566 – 2 Bedroom	82.4 sq m	887 sq ft
Living Space / Kitchen	6.46m x 5.84m	21' 2" x 19' 2"
Bedroom 1	3.47m x 2.89m	11' 5" x 9' 6"
Bedroom 2	3.77m x 2.75m	12' 4" x 9' 0"
Balcony	6.4 sq m	69 sq ft

● 2567 – 1 Bedroom	52.3 sq m	563 sq ft
Living Space / Kitchen	7.87m x 3.58m	25' 10" x 11' 9"
Bedroom	4.22m x 3.00m	13' 10" x 9' 10"
Balcony	8.8 sq m	94 sq ft
● 2568 – Manhattan	44.2 sq m	476 sq ft
Living Space / Kitchen	6.87m x 2.76m	22' 6" x 9' 1"
Bedroom	3.58m x 2.75m	11' 9" x 9' 0"
Balcony	7.5 sq m	80 sq ft
● 2569 – 2 Bedroom	70.0 sq m	753 sq ft
Living Space / Kitchen	8.24m x 3.16m	27' 0" x 10' 4"
Bedroom 1	3.00m x 2.76m	9' 10" x 9' 1"
Bedroom 2	4.55m x 2.75m	14' 11" x 9' 0"
Balcony	7.5 sq m	80 sq ft
● 2570 – 2 Bedroom	70.0 sq m	753 sq ft
Living Space / Kitchen	8.14m x 3.17m	26' 8" x 10' 5"
Bedroom 1	3.00m x 2.77m	9' 10" x 9' 1"
Bedroom 2	4.55m x 2.75m	14' 11" x 9' 0"
Balcony	7.5 sq m	80 sq ft
● 2571 – 1 Bedroom	50.4 sq m	543 sq ft
Living Space / Kitchen	6.84m x 3.20m	22' 5" x 10' 6"
Bedroom	4.28m x 2.91m	14' 1" x 9' 7"
Balcony	6.1 sq m	66 sq ft
● 2572 – 2 Bedroom	76.8 sq m	827 sq ft
Living Space / Kitchen	8.14m x 3.69m	26' 8" x 12' 1"
Bedroom 1	3.18m x 2.92m	10' 5" x 9' 7"
Bedroom 2	4.64m x 2.75m	15' 3" x 9' 0"
Balcony	7.5 sq m	80 sq ft
● 2573 – 2 Bedroom	78.1 sq m	841 sq ft
Living Space / Kitchen	8.14m x 3.86m	26' 8" x 12' 8"
Bedroom 1	3.79m x 2.90m	12' 5" x 9' 6"
Bedroom 2	3.95m x 2.72m	13' 0" x 8' 11"
Balcony	8.8 sq m	94 sq ft
● 2574 – Studio	34.1 sq m	367 sq ft
Living Space / Bedroom	4.94m x 4.28m	16' 2" x 14' 1"
Balcony	4.8 sq m	51 sq ft
● 2575 – 1 Bedroom	50.4 sq m	543 sq ft
Living Space / Kitchen	5.84m x 4.97m	19' 2" x 16' 4"
Bedroom	3.60m x 3.05m	11' 10" x 10' 0"
Balcony	4.8 sq m	51 sq ft

APARTMENT KEY

- Studio Apartment
- Manhattan 1 Bedroom Apartment
- 1 Bedroom Apartment
- 2 Bedroom Apartment

FAIRBANK APARTMENTS



- 2 Ring Hob
- 4 Ring Hob
- Oven
- Full height fridge/freezer
- Under counter fridge/freezer
- Water cylinder and washer/dryer below
- Water cylinder
- Washer/dryer
- Cupboard
- Refuse

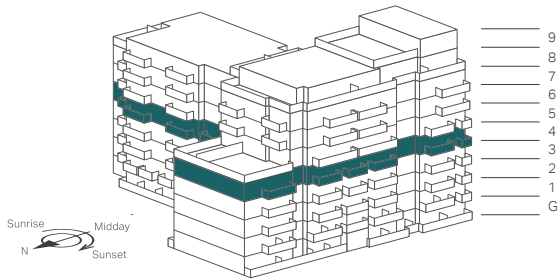


Floorplans shown for Fairbank Apartments are approximate measurements only. Exact layout and sizes may vary. All measurements may vary within a tolerance of 5%. Car park shown for illustrative purposes only. Car parking available subject to additional cost.



Views south west over Landscaped Park

Views west over Landscaped Park



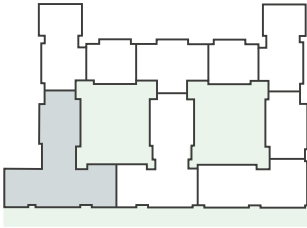
● 2576 – 1 Bedroom	60.1 sq m	647 sq ft
Living Space / Kitchen	5.86m x 5.75m	19' 3" x 18' 10"
Bedroom	4.66m x 3.08m	15' 3" x 10' 1"
Balcony	4.8 sq m	51 sq ft
● 2577 – 1 Bedroom	51.0 sq m	549 sq ft
Living Space / Kitchen	6.54m x 3.95m	21' 5" x 13' 0"
Bedroom	3.76m x 3.75m	12' 4" x 12' 4"
Balcony	6.2 sq m	67 sq ft
● 2578 – 2 Bedroom	74.1 sq m	798 sq ft
Living Space / Kitchen	7.78m x 3.73m	25' 6" x 12' 3"
Bedroom 1	3.24m x 2.90m	10' 8" x 9' 6"
Bedroom 2	4.39m x 2.80m	14' 5" x 9' 2"
Balcony	7.5 sq m	80 sq ft
● 2579 – 1 Bedroom	50.3 sq m	541 sq ft
Living Space / Kitchen	7.53m x 3.27m	24' 8" x 10' 9"
Bedroom	3.24m x 3.25m	10' 8" x 10' 8"
Balcony	7.5 sq m	80 sq ft
● 2580 – 2 Bedroom	70.1 sq m	755 sq ft
Living Space / Kitchen	7.38m x 3.48m	24' 3" x 11' 5"
Bedroom 1	3.05m x 2.80m	10' 0" x 9' 2"
Bedroom 2	3.58m x 2.75m	11' 9" x 9' 0"
Balcony	8.3 sq m	90 sq ft
● 2581 – 2 Bedroom	70.0 sq m	753 sq ft
Living Space / Kitchen	7.74m x 3.51m	25' 5" x 11' 6"
Bedroom 1	3.57m x 3.15m	11' 9" x 10' 4"
Bedroom 2	4.05m x 2.75m	13' 3" x 9' 0"
Balcony	7.5 sq m	80 sq ft
● 2582 – 1 Bedroom	50.0 sq m	538 sq ft
Living Space / Kitchen	6.49m x 3.30m	21' 4" x 10' 10"
Bedroom	4.19m x 2.94m	13' 9" x 9' 8"
Balcony	7.5 sq m	80 sq ft
● 2583 – 1 Bedroom	51.2 sq m	551 sq ft
Living Space / Kitchen	5.86m x 4.15m	19' 3" x 13' 7"
Bedroom	4.80m x 3.50m	15' 9" x 11' 6"
Balcony	7.4 sq m	79 sq ft
● 2584 – 2 Bedroom	82.4 sq m	887 sq ft
Living Space / Kitchen	6.46m x 5.84m	21' 2" x 19' 2"
Bedroom 1	3.47m x 2.89m	11' 5" x 9' 6"
Bedroom 2	3.77m x 2.75m	12' 4" x 9' 0"
Balcony	6.4 sq m	69 sq ft

● 2585 – 1 Bedroom	52.3 sq m	563 sq ft
Living Space / Kitchen	7.87m x 3.58m	25' 10" x 11' 9"
Bedroom	4.22m x 3.00m	13' 10" x 9' 10"
Balcony	8.8 sq m	94 sq ft
● 2586 – Manhattan	44.2 sq m	476 sq ft
Living Space / Kitchen	6.87m x 2.76m	22' 6" x 9' 1"
Bedroom	3.58m x 2.75m	11' 9" x 9' 0"
Balcony	7.5 sq m	80 sq ft
● 2587 – 2 Bedroom	70.0 sq m	753 sq ft
Living Space / Kitchen	8.24m x 3.16m	27' 0" x 10' 4"
Bedroom 1	3.00m x 2.76m	9' 10" x 9' 1"
Bedroom 2	4.55m x 2.75m	14' 11" x 9' 0"
Balcony	7.5 sq m	80 sq ft
● 2588 – 2 Bedroom	70.0 sq m	753 sq ft
Living Space / Kitchen	8.14m x 3.17m	26' 8" x 10' 5"
Bedroom 1	3.00m x 2.77m	9' 10" x 9' 1"
Bedroom 2	4.55m x 2.75m	14' 11" x 9' 0"
Balcony	7.5 sq m	80 sq ft
● 2589 – 1 Bedroom	50.4 sq m	543 sq ft
Living Space / Kitchen	6.84m x 3.20m	22' 5" x 10' 6"
Bedroom	4.28m x 2.91m	14' 1" x 9' 7"
Balcony	6.1 sq m	66 sq ft
● 2590 – 2 Bedroom	76.8 sq m	827 sq ft
Living Space / Kitchen	8.14m x 3.69m	26' 8" x 12' 1"
Bedroom 1	3.18m x 2.92m	10' 5" x 9' 7"
Bedroom 2	4.64m x 2.75m	15' 3" x 9' 0"
Balcony	7.5 sq m	80 sq ft
● 2591 – 2 Bedroom	78.1 sq m	841 sq ft
Living Space / Kitchen	8.14m x 3.86m	26' 8" x 12' 8"
Bedroom 1	3.79m x 2.90m	12' 5" x 9' 6"
Bedroom 2	3.95m x 2.72m	13' 0" x 8' 11"
Balcony	8.8 sq m	94 sq ft
● 2592 – Studio	34.1 sq m	367 sq ft
Living Space / Bedroom	4.94m x 4.28m	16' 2" x 14' 1"
Balcony	4.8 sq m	51 sq ft
● 2593 – 1 Bedroom	50.4 sq m	543 sq ft
Living Space / Kitchen	5.84m x 4.97m	19' 2" x 16' 4"
Bedroom	3.60m x 3.05m	11' 10" x 10' 0"
Balcony	4.8 sq m	51 sq ft

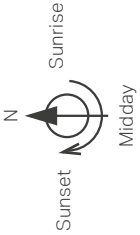
APARTMENT KEY

- Studio Apartment
- Manhattan 1 Bedroom Apartment
- 1 Bedroom Apartment
- 2 Bedroom Apartment

FAIRBANK APARTMENTS

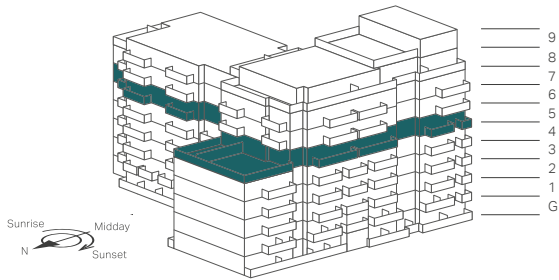


- ⊞ 2 Ring Hob
- ⊞⊞ 4 Ring Hob
- ⊞ Oven
- ⊞ Full height fridge/freezer
- ⊞ Under counter fridge/freezer
- ⊞ Water cylinder and washer/dryer below
- ⊞ Water cylinder
- ⊞ Washer/dryer
- C Cupboard
- R Refuse



Floorplans shown for Fairbank Apartments are approximate measurements only. Exact layout and sizes may vary. All measurements may vary within a tolerance of 5%. Car park shown for illustrative purposes only. Car parking available subject to additional cost.





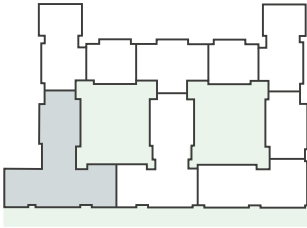
● 2594 – Manhattan	42.0 sq m	452 sq ft
Living Space / Kitchen	6.54m x 3.43m	21' 5" x 11' 3"
Bedroom	3.32m x 2.90m	10' 11" x 9' 6"
Balcony	4.8 sq m	51 sq ft
● 2595 – 2 Bedroom	72.1 sq m	776 sq ft
Living Space / Kitchen	7.78m x 3.87m	25' 6" x 12' 8"
Bedroom 1	4.15m x 2.92m	13' 7" x 9' 7"
Bedroom 2	4.19m x 2.82m	13' 9" x 9' 3"
Balcony	7.5 sq m	80 sq ft
● 2596 – 2 Bedroom	72.5 sq m	780 sq ft
Living Space / Kitchen	7.53m x 3.67m	24' 8" x 12' 0"
Bedroom 1	3.14m x 2.90m	10' 4" x 9' 6"
Bedroom 2	3.89m x 2.75m	12' 9" x 9' 0"
Balcony	7.5 sq m	80 sq ft
● 2597 – 2 Bedroom	70.1 sq m	755 sq ft
Living Space / Kitchen	7.38m x 3.48m	24' 3" x 11' 5"
Bedroom 1	3.05m x 2.80m	10' 0" x 9' 2"
Bedroom 2	3.58m x 2.75m	11' 9" x 9' 0"
Balcony	8.3 sq m	90 sq ft
● 2598 – 2 Bedroom	70.0 sq m	753 sq ft
Living Space / Kitchen	7.74m x 3.51m	25' 5" x 11' 6"
Bedroom 1	3.57m x 3.15m	11' 9" x 10' 4"
Bedroom 2	4.05m x 2.75m	13' 3" x 9' 0"
Balcony	7.5 sq m	80 sq ft
● 2599 – 1 Bedroom	50.0 sq m	538 sq ft
Living Space / Kitchen	6.49m x 3.30m	21' 4" x 10' 10"
Bedroom	4.19m x 2.94m	13' 9" x 9' 8"
Balcony	7.5 sq m	80 sq ft
● 2600 – 1 Bedroom	51.2 sq m	551 sq ft
Living Space / Kitchen	5.86m x 4.15m	19' 3" x 13' 7"
Bedroom	4.80m x 3.50m	15' 9" x 11' 6"
Balcony	7.4 sq m	79 sq ft

● 2601 – 2 Bedroom	82.4 sq m	887 sq ft
Living Space / Kitchen	6.46m x 5.84m	21' 2" x 19' 2"
Bedroom 1	3.47m x 2.89m	11' 5" x 9' 6"
Bedroom 2	3.77m x 2.75m	12' 4" x 9' 0"
Balcony	6.4 sq m	69 sq ft
● 2602 – 2 Bedroom	72.2 sq m	777 sq ft
Living Space / Kitchen	7.87m x 3.55m	25' 10" x 11' 8"
Bedroom 1	3.27m x 2.75m	10' 9" x 9' 0"
Bedroom 2	4.17m x 2.75m	13' 8" x 9' 0"
Balcony	8.8 sq m	94 sq ft
● 2603 – 2 Bedroom Elite	70.0 sq m	753 sq ft
Living Space / Kitchen	8.24m x 3.16m	27' 0" x 10' 4"
Bedroom 1	3.00m x 2.76m	9' 10" x 9' 1"
Bedroom 2	4.55m x 2.75m	14' 11" x 9' 0"
Balcony	7.5 sq m	80 sq ft
● 2604 – 3 Bedroom Premier	96.6 sq m	1,040 sq ft
Living Space / Kitchen	8.14m x 3.56m	26' 8" x 11' 8"
Bedroom 1	3.24m x 2.76m	10' 8" x 9' 1"
Bedroom 2	3.10m x 2.75m	10' 2" x 9' 0"
Bedroom 3	3.20m x 2.75m	10' 6" x 9' 0"
Balcony	12.7 sq m	137 sq ft
● 2605 – 3 Bedroom Premier	107.5 sq m	1,157 sq ft
Living Space / Kitchen	6.67m x 6.35m	21' 11" x 20' 10"
Bedroom 1	3.75m x 2.81m	12' 4" x 9' 3"
Bedroom 2	3.83m x 3.10m	12' 7" x 10' 2"
Bedroom 3	4.56m x 2.75m	15' 0" x 9' 0"
Balcony	12.7 sq m	137 sq ft
Terrace	75.3 sq m	811 sq ft
● 2606 – 2 Bedroom	71.8 sq m	773 sq ft
Living Space / Kitchen	5.84m x 5.70m	19' 2" x 18' 8"
Bedroom 1	6.54m x 2.76m	21' 5" x 9' 1"
Bedroom 2	3.35m x 3.00m	11' 0" x 9' 10"
Terrace	42.0 sq m	452 sq ft

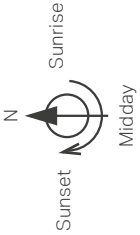
APARTMENT KEY

- Manhattan 1 Bedroom Apartment
- 1 Bedroom Apartment
- 2 Bedroom Apartment
- 3 Bedroom Premier Apartment

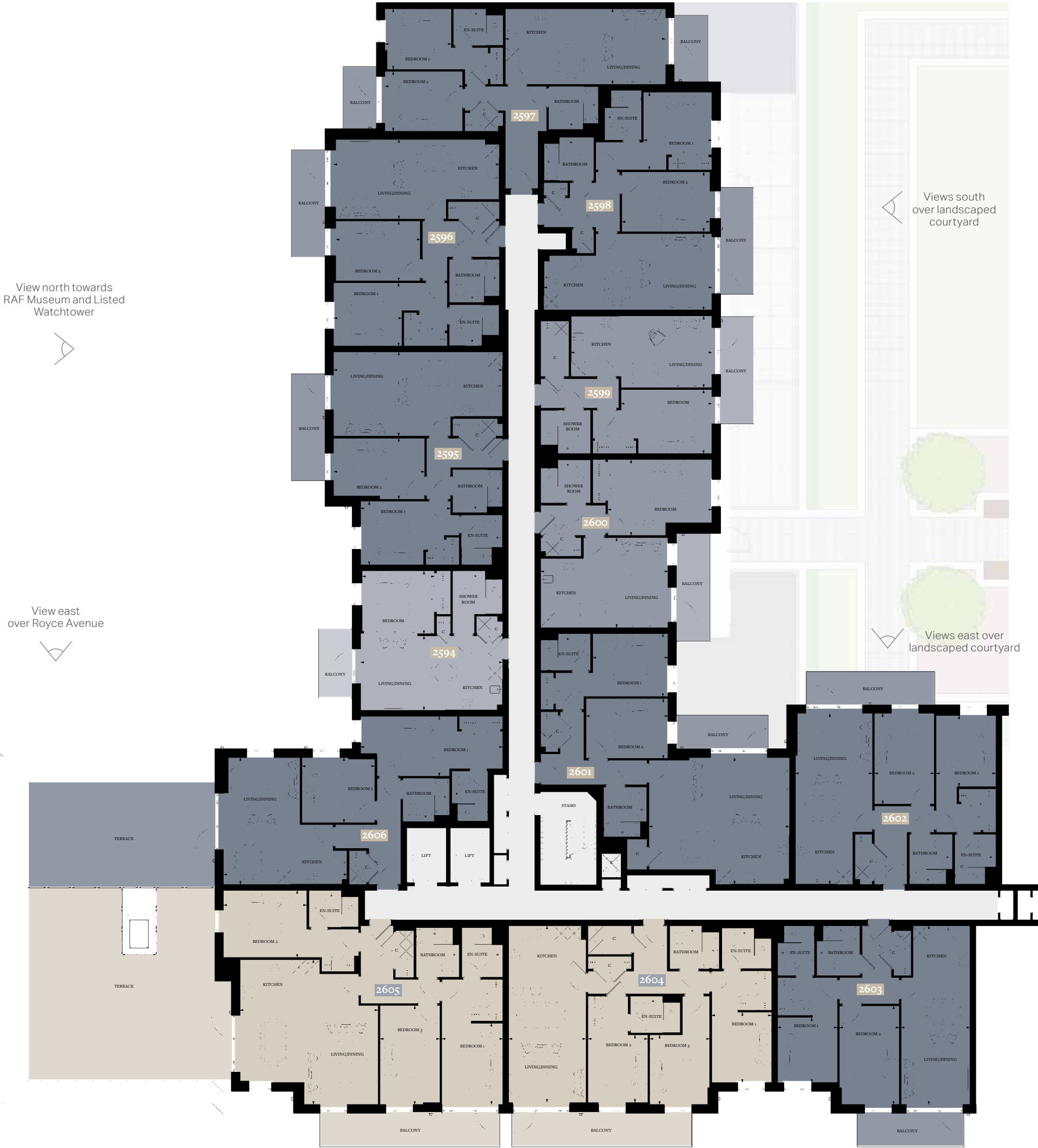
FAIRBANK APARTMENTS



- 2 Ring Hob
- 4 Ring Hob
- Oven
- Full height fridge/freezer
- Under counter fridge/freezer
- Water cylinder and washer/dryer below
- Water cylinder
- Washer/dryer
- C Cupboard
- R Refuse



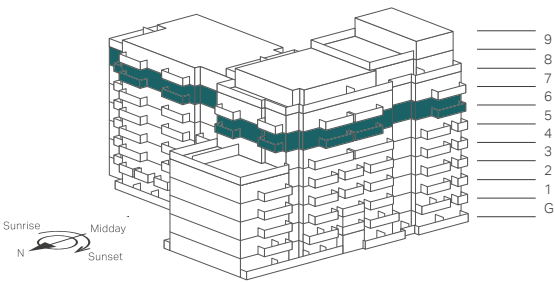
Floorplans shown for Fairbank Apartments are approximate measurements only. Exact layout and sizes may vary. All measurements may vary within a tolerance of 5%. Car park shown for illustrative purposes only. Car parking available subject to additional cost.



Views south west over Landscaped Park

Views west over Landscaped Park

The Elite & Premier Collection



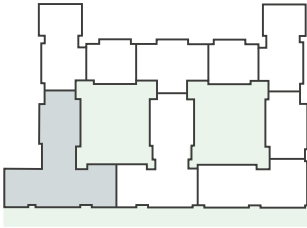
● 2607 – Manhattan Elite	42.0 sq m	452 sq ft
Living Space / Kitchen	6.54m x 3.43m	21' 5" x 11' 3"
Bedroom	3.32m x 2.90m	10' 11" x 9' 6"
Balcony	4.8 sq m	51 sq ft
● 2608 – 2 Bedroom Elite	72.1 sq m	776 sq ft
Living Space / Kitchen	7.78m x 3.87m	25' 6" x 12' 8"
Bedroom 1	4.15m x 2.92m	13' 7" x 9' 7"
Bedroom 2	4.19m x 2.82m	13' 9" x 9' 3"
Balcony	7.5 sq m	80 sq ft
● 2609 – 2 Bedroom Elite	72.5 sq m	780 sq ft
Living Space / Kitchen	7.53m x 3.67m	24' 8" x 12' 0"
Bedroom 1	3.14m x 2.90m	10' 4" x 9' 6"
Bedroom 2	3.89m x 2.75m	12' 9" x 9' 0"
Balcony	7.5 sq m	80 sq ft
● 2610 – 2 Bedroom Elite	70.1 sq m	755 sq ft
Living Space / Kitchen	7.38m x 3.48m	24' 3" x 11' 5"
Bedroom 1	3.05m x 2.80m	10' 0" x 9' 2"
Bedroom 2	3.58m x 2.75m	11' 9" x 9' 0"
Balcony	8.3 sq m	90 sq ft
● 2611 – 2 Bedroom Elite	70.0 sq m	753 sq ft
Living Space / Kitchen	7.74m x 3.51m	25' 5" x 11' 6"
Bedroom 1	3.57m x 3.15m	11' 9" x 10' 4"
Bedroom 2	4.05m x 2.75m	13' 3" x 9' 0"
Balcony	7.5 sq m	80 sq ft
● 2612 – 1 Bedroom Elite	50.0 sq m	538 sq ft
Living Space / Kitchen	6.49m x 3.30m	21' 4" x 10' 10"
Bedroom	4.19m x 2.94m	13' 9" x 9' 8"
Balcony	7.5 sq m	80 sq ft
● 2613 – 1 Bedroom Elite	51.2 sq m	551 sq ft
Living Space / Kitchen	5.86m x 4.15m	19' 3" x 13' 7"
Bedroom	4.78m x 3.50m	15' 8" x 11' 6"
Balcony	7.4 sq m	79 sq ft

● 2614 – 2 Bedroom Elite	82.4 sq m	887 sq ft
Living Space / Kitchen	6.50m x 5.84m	21' 4" x 19' 2"
Bedroom 1	3.47m x 2.89m	11' 5" x 9' 6"
Bedroom 2	3.77m x 2.75m	12' 4" x 9' 0"
Balcony	6.4 sq m	69 sq ft
● 2615 – 2 Bedroom Elite	72.2 sq m	777 sq ft
Living Space / Kitchen	7.87m x 3.55m	25' 10" x 11' 8"
Bedroom 1	3.27m x 2.75m	10' 9" x 9' 0"
Bedroom 2	4.17m x 2.75m	13' 8" x 9' 0"
Balcony	8.8 sq m	94 sq ft
● 2616 – 3 Bedroom Premier	96.6 sq m	1,040 sq ft
Living Space / Kitchen	8.15m x 3.56m	26' 9" x 11' 8"
Bedroom 1	3.24m x 2.76m	10' 8" x 9' 1"
Bedroom 2	3.11m x 2.75m	10' 2" x 9' 0"
Bedroom 3	3.20m x 2.75m	10' 6" x 9' 0"
Balcony	8.8 sq m	94 sq ft
● 2617 – 3 Bedroom Premier	96.6 sq m	1,040 sq ft
Living Space / Kitchen	8.14m x 3.56m	26' 8" x 11' 8"
Bedroom 1	3.24m x 2.76m	10' 8" x 9' 1"
Bedroom 2	3.10m x 2.75m	10' 2" x 9' 0"
Bedroom 3	3.20m x 2.75m	10' 6" x 9' 0"
Balcony	8.8 sq m	94 sq ft
● 2618 – 3 Bedroom Premier	107.5 sq m	1,157 sq ft
Living Space / Kitchen	6.67m x 6.35m	21' 11" x 20' 10"
Bedroom 1	3.75m x 2.81m	12' 4" x 9' 3"
Bedroom 2	3.83m x 3.10m	12' 7" x 10' 2"
Bedroom 3	4.56m x 2.75m	15' 0" x 9' 0"
Balcony	15.2 sq m	164 sq ft
● 2619 – 2 Bedroom Elite	71.8 sq m	773 sq ft
Living Space / Kitchen	5.84m x 5.70m	19' 2" x 18' 8"
Bedroom 1	6.54m x 2.76m	21' 5" x 9' 1"
Bedroom 2	3.35m x 3.00m	11' 0" x 9' 10"
Balcony	6.2 sq m	67 sq ft

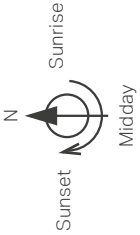
APARTMENT KEY

- Manhattan 1 Bedroom Apartment
- 1 Bedroom Apartment
- 2 Bedroom Apartment
- 3 Bedroom Premier Apartment

FAIRBANK APARTMENTS



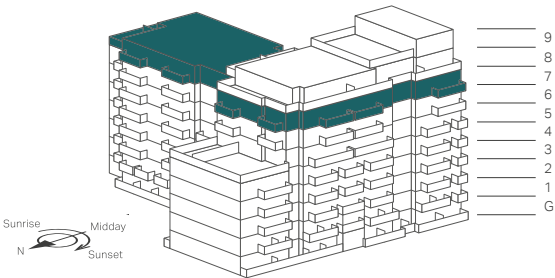
- 2 Ring Hob
- 4 Ring Hob
- Oven
- Full height fridge/freezer
- Under counter fridge/freezer
- Water cylinder and washer/dryer below
- Water cylinder
- Washer/dryer
- Cupboard
- Refuse



Floorplans shown for Fairbank Apartments are approximate measurements only. Exact layout and sizes may vary. All measurements may vary within a tolerance of 5%. Car park shown for illustrative purposes only. Car parking available subject to additional cost.



The Elite & Premier Collection



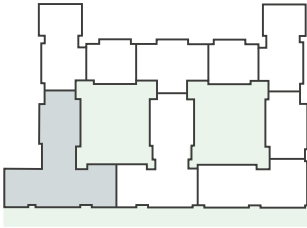
● 2620 – Manhattan Elite	42.0 sq m	452 sq ft
Living Space / Kitchen	6.54m x 3.43m	21' 5" x 11' 3"
Bedroom	3.32m x 2.90m	10' 11" x 9' 6"
Balcony	4.8 sq m	51 sq ft
● 2621 – 2 Bedroom Elite	72.1 sq m	776 sq ft
Living Space / Kitchen	7.78m x 3.87m	25' 6" x 12' 8"
Bedroom 1	4.15m x 2.92m	13' 7" x 9' 7"
Bedroom 2	4.19m x 2.82m	13' 9" x 9' 3"
Balcony	7.5 sq m	80 sq ft
● 2622 – 2 Bedroom Elite	82.0 sq m	883 sq ft
Living Space / Kitchen	9.30m x 3.67m	30' 6" x 12' 0"
Bedroom 1	3.14m x 3.00m	10' 4" x 9' 10"
Bedroom 2	4.29m x 2.75m	14' 1" x 9' 0"
Balcony	7.5 sq m	80 sq ft
Terrace	36.2 sq m	390 sq ft
● 2623 – 2 Bedroom Elite	76.6 sq m	825 sq ft
Living Space / Kitchen	7.74m x 3.78m	25' 5" x 12' 5"
Bedroom 1	3.60m x 3.50m	11' 10" x 11' 6"
Bedroom 2	4.24m x 2.65m	13' 11" x 8' 8"
Balcony	7.5 sq m	80 sq ft
Terrace	19.8 sq m	213 sq ft
● 2624 – 1 Bedroom Elite	50.0 sq m	538 sq ft
Living Space / Kitchen	6.49m x 3.30m	21' 4" x 10' 10"
Bedroom	4.19m x 2.94m	13' 9" x 9' 8"
Balcony	7.5 sq m	80 sq ft
● 2625 – 1 Bedroom Elite	51.2 sq m	551 sq ft
Living Space / Kitchen	5.86m x 4.15m	19' 3" x 13' 7"
Bedroom	4.78m x 3.50m	15' 8" x 11' 6"
Balcony	7.4 sq m	79 sq ft
● 2626 – 2 Bedroom Elite	82.4 sq m	887 sq ft
Living Space / Kitchen	6.50m x 5.84m	21' 4" x 19' 2"
Bedroom 1	3.47m x 2.89m	11' 5" x 9' 6"
Bedroom 2	3.77m x 2.75m	12' 4" x 9' 0"
Balcony	6.4 sq m	69 sq ft

● 2627 – 2 Bedroom Elite	72.2 sq m	777 sq ft
Living Space / Kitchen	7.87m x 3.55m	25' 10" x 11' 8"
Bedroom 1	3.27m x 2.75m	10' 9" x 9' 0"
Bedroom 2	4.17m x 2.75m	13' 8" x 9' 0"
Balcony	8.8 sq m	94 sq ft
● 2628 – 3 Bedroom Premier	96.6 sq m	1,040 sq ft
Living Space / Kitchen	8.15m x 3.56m	26' 9" x 11' 8"
Bedroom 1	3.24m x 2.76m	10' 8" x 9' 1"
Bedroom 2	3.11m x 2.75m	10' 2" x 9' 0"
Bedroom 3	3.20m x 2.75m	10' 6" x 9' 0"
Balcony	8.8 sq m	94 sq ft
● 2629 – 3 Bedroom Premier	96.6 sq m	1,040 sq ft
Living Space / Kitchen	8.14m x 3.56m	26' 8" x 11' 8"
Bedroom 1	3.24m x 2.76m	10' 8" x 9' 1"
Bedroom 2	3.10m x 2.75m	10' 2" x 9' 0"
Bedroom 3	3.20m x 2.75m	10' 6" x 9' 0"
Balcony	8.8 sq m	94 sq ft
● 2630 – 3 Bedroom Premier	107.5 sq m	1,157 sq ft
Living Space / Kitchen	6.67m x 6.35m	21' 11" x 20' 10"
Bedroom 1	3.75m x 2.81m	12' 4" x 9' 3"
Bedroom 2	3.83m x 3.10m	12' 7" x 10' 2"
Bedroom 3	4.56m x 2.75m	15' 0" x 9' 0"
Balcony	15.2 sq m	164 sq ft
● 2631 – 2 Bedroom Elite	71.8 sq m	773 sq ft
Living Space / Kitchen	5.84m x 5.70m	19' 2" x 18' 8"
Bedroom 1	6.54m x 2.76m	21' 5" x 9' 1"
Bedroom 2	3.35m x 3.00m	11' 0" x 9' 10"
Balcony	6.2 sq m	67 sq ft

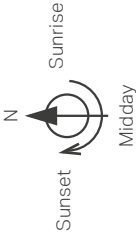
APARTMENT KEY

- Manhattan 1 Bedroom Apartment
- 1 Bedroom Apartment
- 2 Bedroom Apartment
- 3 Bedroom Premier Apartment

FAIRBANK APARTMENTS



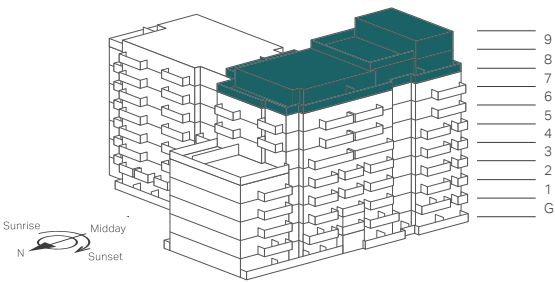
- 2 Ring Hob
- 4 Ring Hob
- Oven
- Full height fridge/freezer
- Under counter fridge/freezer
- Water cylinder and washer/dryer below
- Water cylinder
- Washer/dryer
- C Cupboard
- R Refuse



Floorplans shown for Fairbank Apartments are approximate measurements only. Exact layout and sizes may vary. All measurements may vary within a tolerance of 5%. Car park shown for illustrative purposes only. Car parking available subject to additional cost.



The Elite & Premier Collection

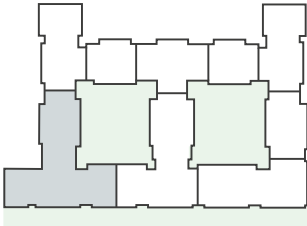


● 2632 – 2 Bedroom Premier	70.4 sq m	758 sq ft
Living Space/Kitchen	5.88m x 5.09m	19' 3" x 16' 8"
Bedroom 1	3.57m x 3.24m	11' 9" x 10' 8"
Bedroom 2	3.60m x 2.85m	11' 10" x 9' 4"
Terrace	36.7 sq m	395 sq ft
● 2633 – 1 Bedroom Elite	50.9 sq m	548 sq ft
Living Space/Kitchen	5.84m x 4.64m	19' 2" x 15' 3"
Bedroom	3.75m x 3.24m	12' 4" x 10' 8"
Terrace	13.8 sq m	149 sq ft
● 2634 – 4 Bedroom Duplex Premier Penthouse	160.0 sq m	1,722 sq ft
Living Space/Kitchen	8.40m x 7.31m	27' 7" x 24' 0"
Bedroom 1	4.22m x 2.90m	13' 10" x 9' 6"
Bedroom 2	3.66m x 3.13m	12' 0" x 10' 3"
Bedroom 3	3.73m x 3.66m	12' 3" x 12' 0"
Bedroom 4	3.09m x 2.65m	10' 2" x 8' 8"
Terrace	96.9 sq m	1,043 sq ft
● 2635 – 3 Bedroom Premier	101.0 sq m	1,087 sq ft
Living Space/Kitchen	6.40m x 5.10m	21' 0" x 16' 9"
Bedroom 1	3.59m x 3.77m	11' 9" x 12' 4"
Bedroom 2	3.02m x 3.47m	9' 11" x 11' 5"
Bedroom 3	3.49m x 2.75m	11' 5" x 9' 0"
Terrace	24.6 sq m	265 sq ft
● 2636 – 3 Bedroom Premier	101.6 sq m	1,094 sq ft
Living Space/Kitchen	8.05m x 5.35m	26' 5" x 17' 7"
Bedroom 1	3.80m x 3.50m	12' 6" x 11' 6"
Bedroom 2	2.96m x 2.92m	9' 9" x 9' 7"
Bedroom 3	3.22m x 3.00m	10' 7" x 9' 10"
Terrace	89.2 sq m	960 sq ft

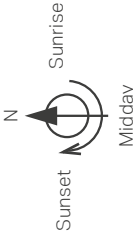
APARTMENT KEY

- 1 Bedroom Apartment
- 2 Bedroom Premier Apartment
- 3 Bedroom Premier Apartment
- 4 Bedroom Duplex Premier

FAIRBANK APARTMENTS



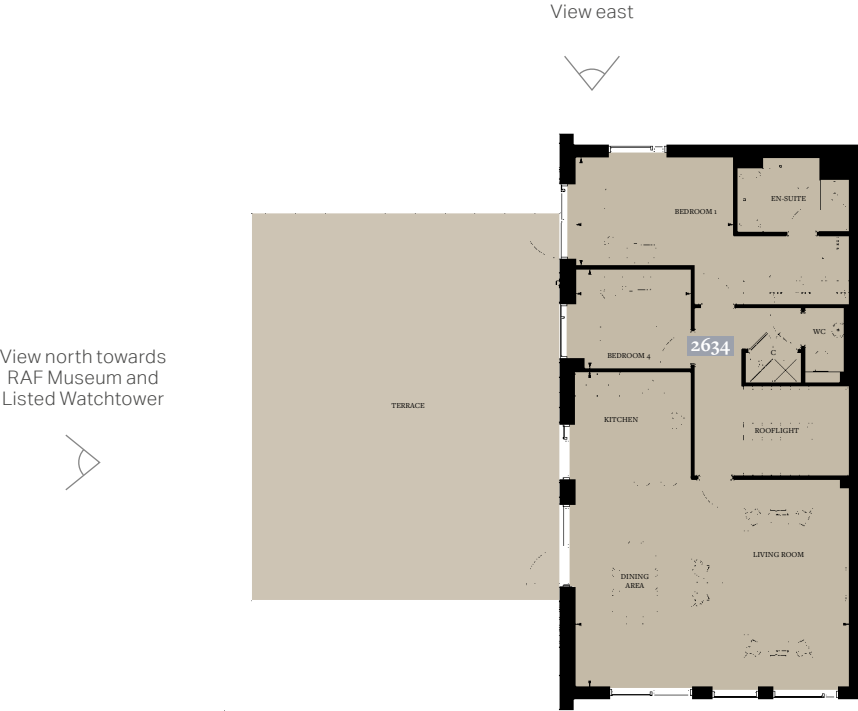
- 2 Ring Hob
- 4 Ring Hob
- Oven
- Full height fridge/freezer
- Under counter fridge/freezer
- Water cylinder and washer/dryer below
- Water cylinder
- Washer/dryer
- Cupboard
- Refuse



EIGHTH FLOOR



NINTH FLOOR



Floorplans shown for Fairbank Apartments are approximate measurements only. Exact layout and sizes may vary. All measurements may vary within a tolerance of 5%. Car park shown for illustrative purposes only. Car parking available subject to additional cost.



Bedroom



Light-filled spaces

GENERAL

- Feature architrave and skirting
- Double-glazed windows
- Balcony or terrace to all apartments
- Wardrobe inclusive of shelf and rail, to Master bedroom¹
- Matt emulsion paint finish to walls and ceilings
- Managed residents' gated car parking²
- 999-year lease from December 2005
- 2-year St George warranty
- 10-year insurance backed building warranty

¹ Except studio apartments.
² Available at an additional cost, subject to availability.



Living and dining

APARTMENT SPECIFICATION

Stylish and modern, each apartment features a balcony or terrace, alongside contemporary fittings.



Kitchen and dining area



Bedroom

SECURITY

- Colour video entryphone system
- Mains-operated smoke detectors to hallways and communal areas
- 24-hour estate management³
- Monitored CCTV security system³

COMMUNAL AREAS

- Landscaped public areas³
- Access to The Spa, residents' health and fitness suite³
- Lifts to all floors
- Low-level feature lighting to landscaped areas³
- Stylishly designed entrance lobby with feature wall and timber panelling

³ Payable via the service charge.



Living space



Kitchen

KITCHEN

- Custom-designed fitted kitchen with slimline laminate kitchen worktop
- Feature tile splashback
- Integrated fridge / freezer
- Integrated dishwasher (except studio apartments)
- Integrated oven and touch control induction hob
- Grade A energy-efficient kitchen appliances¹
- Integrated extractor
- Stainless steel bowl sink and black mixer tap to Studio, Manhattan and 1 bedroom apartments
- Stainless steel 1½ bowl sink with black mixer tap to two, three and four bedroom apartments
- Under-wall unit LED lighting
- Washer / dryer in hall cupboard

¹ The specification comes as standard with every apartment. Your attention is drawn to the fact that it may not be possible to obtain the branded products as referred to in the specification. In such cases, a similar alternative will be provided. St George reserves the right to make these changes as required.



Kitchen storage

BATHROOM / EN SUITE & SHOWER ROOM

- Stylishly designed bathrooms and en suites with tiled floors and tiled wall
- Basin and WC
- Chrome taps
- Glass screen above bath where no separate shower enclosure within the same bathroom
- Screen to all separate showers
- Heated black towel rail
- Toilet roll holder
- Low-level vanity cabinet



Bathroom



Integrated SMEG oven

FLOORING

- Wood-effect flooring to living space, hallway and kitchen
- Carpet to bedrooms (wood-effect flooring in Manhattan and studio apartments)

ELECTRICAL

- LED downlighters to living space, kitchen, bathrooms and hallway with dimmer switch to living space
- Satellite TV and FM terrestrial TV points to living space and all bedrooms
- Electric panel heaters
- Telephone point
- Digital media box and one year pre-paid¹
- Sky Q contract installed and operational¹
- USB charging points to living space, kitchen and bedroom¹
- Pendant light to bedrooms
- White sockets and switches

¹ Terms and conditions apply, please liaise with the Sales Consultants for further details.



Living and dining

ELITE UPGRADE SPECIFICATION



Kitchen



Composite stone kitchen worktop



Built-in wardrobes

ENHANCE THE SPECIFICATION OF YOUR APARTMENT WITH AN ELITE UPGRADE

- Integrated wine cooler (size dependent on apartment type)
- Integrated microwave
- Composite stone kitchen worktop
- Composite stone top to bathroom vanity cabinet
- Chrome light switches and sockets throughout¹
- LED downlighters to living space, kitchen and bedroom²
- Enhanced wardrobe with drawers, shelf and rail to Bedroom 1
- Feature mirrored bathroom wall cabinet



Bathroom

¹ Where concealed behind appliances or within cupboards, sockets and switches are white. Upgrade specification available as a complete package at extra cost when you purchase a standard apartment. Please see the Sales Consultants for further information. Interior photographs are of Beaufort Park and are indicative only. Your attention is drawn to the fact that it may not be possible to obtain the branded products as referred to in the specification. In such cases, a similar alternative will be provided. St George reserves the right to make these changes as required.

² Ceiling rose to storage cupboard.

PREMIER SPECIFICATION

The Premier Specification is the finest in modern apartment living, fitting out your home with the finest details throughout.

The premier apartments offer the finest in modern apartment living. The quality specification has been created to suitably reflect its prime location. From the custom-designed fitted kitchens to the elegant porcelain

tilled bathrooms and en suites, each detail speaks of quality and style. Features such as dimmable lighting and an LED television in the living area further enhance the feeling of sophistication.



Open-plan living and dining

GENERAL

- Comfort cooling to living space and bedrooms¹
- Balcony or terrace to all apartments
- Built-in wardrobe to bedrooms 1 & 2, with internal lighting and drawers²
- 999-year lease from December 2005
- 2-year St George warranty
- 10-year insurance-backed building warranty
- Double-glazed windows
- Managed residents' gated car parking³

¹ The comfort cooling system is designed to provide an ambient temperature within the apartment for the majority of external temperatures. This may not be achieved in extreme temperature conditions.

² 3 bedroom apartments only.

³ Available at an additional cost, subject to availability.



Integrated appliances



Stone worktop and splashback

KITCHEN

- Custom-designed fitted kitchen
- Composite stone kitchen worktops and splashback
- Integrated stainless steel oven, microwave and touch control induction hob
- Integrated stainless steel extractor
- Integrated wine cooler
- Integrated fridge / freezer
- Integrated dishwasher
- Stainless steel 1½ sink bowl with black mixer tap and waste disposal unit
- Corner carousel cabinet⁴
- Cutlery drawer inserts
- Washer / dryer in hallway cupboard

⁴ Subject to kitchen design.

ELECTRICAL

- LED downlighters throughout with dimmer switches to living space and bedrooms 1, 2 & 3
- 50" 4K LED smart TV to living space
- Digital media box and one-year pre-paid contract installed and operational⁵
- USB charging points to living space, kitchen and bedroom⁵
- External light fittings to terraces only
- Telephone points to living space
- Brushed stainless steel sockets and switches throughout⁶

⁵ Terms and conditions apply, please liaise with the Sales Consultants for further details.

⁶ Where concealed behind appliances or within cupboards, sockets and switches are white. In such cases, a similar alternative will be provided. St George reserves the right to make these changes as required.



Shower room



Master Bedroom

BATHROOM / EN SUITE & SHOWER ROOM

- Stylishly designed bathrooms and en suites, with feature wall tiles and tiled floors
- Brushed stainless steel showering set to shower enclosure
- White oversized bath with chrome taps to main bathroom only
- Heated black towel rail
- Feature demisting mirrored wall cabinet with open shelving and perimeter lighting
- Low-level vanity unit with composite stone countertop and black tap
- Toilet roll holder

FLOORING

- Engineered timber flooring to living space, kitchen and hallway
- Carpet to bedrooms

Computer generated image and interior photography are of Beaufort Park and are indicative only. Your attention is drawn to the fact that it may not be possible to obtain the branded products as referred to in the specification. In such cases, a similar alternative will be provided. St George reserves the right to make these changes as required.



Living space



DESIGNED FOR LIFE

At St George, we are committed to creating great places where people love to live, work and relax. Where the homes are light-filled, adaptable and finished to very high standards. Where carefully planned public areas enhance well-being and quality of life for residents and visitors. Where people feel a sense of community.

Customers drive all our decisions

We achieve that by putting our customers at the heart of everything we do. First, we strive to understand what our customers want and need – well-built homes, in a pleasant and safe neighbourhood, with plenty of amenities and good transport connections. Then we apply that understanding to all our planning and design decisions.

And for every new development, we challenge ourselves to go further, to improve and innovate, ensuring we satisfy the real needs of our customers in inspiring and sustainable ways.

Choice and diversity

No two St George customers are the same, so we aim to offer a wide choice of property location, size and type. From central London to major towns and cities; from market towns to rural villages, countryside to the coast – we build in locations our customers love. And whatever home you are looking for, whether that's a city penthouse, a modern studio apartment or traditional family home, you will find the perfect fit for your lifestyle.

Quality first to last

Quality is the defining characteristic of St George developments, right down to the very last detail. We choose our locations, style of homes, construction practices, materials and specifications with great care. When you buy a new home from Berkeley you can be safe in the knowledge that it is built to high standards of design and quality, has low environmental impact and that you will receive a professional, efficient and helpful service from us. For extra peace of mind, all new properties come with a 10-year build warranty.

Green living

For St George, sustainability isn't simply the latest buzzword. We are committed to creating a better environment within our developments and in the areas that surround them. That's why we build on brownfield sites whenever we can, bringing new life to disused and unloved spaces. We take care to protect the natural environment and enhance biodiversity. All our homes are designed to reduce water and energy consumption, and to enable residents to recycle waste.

Commitment to the future

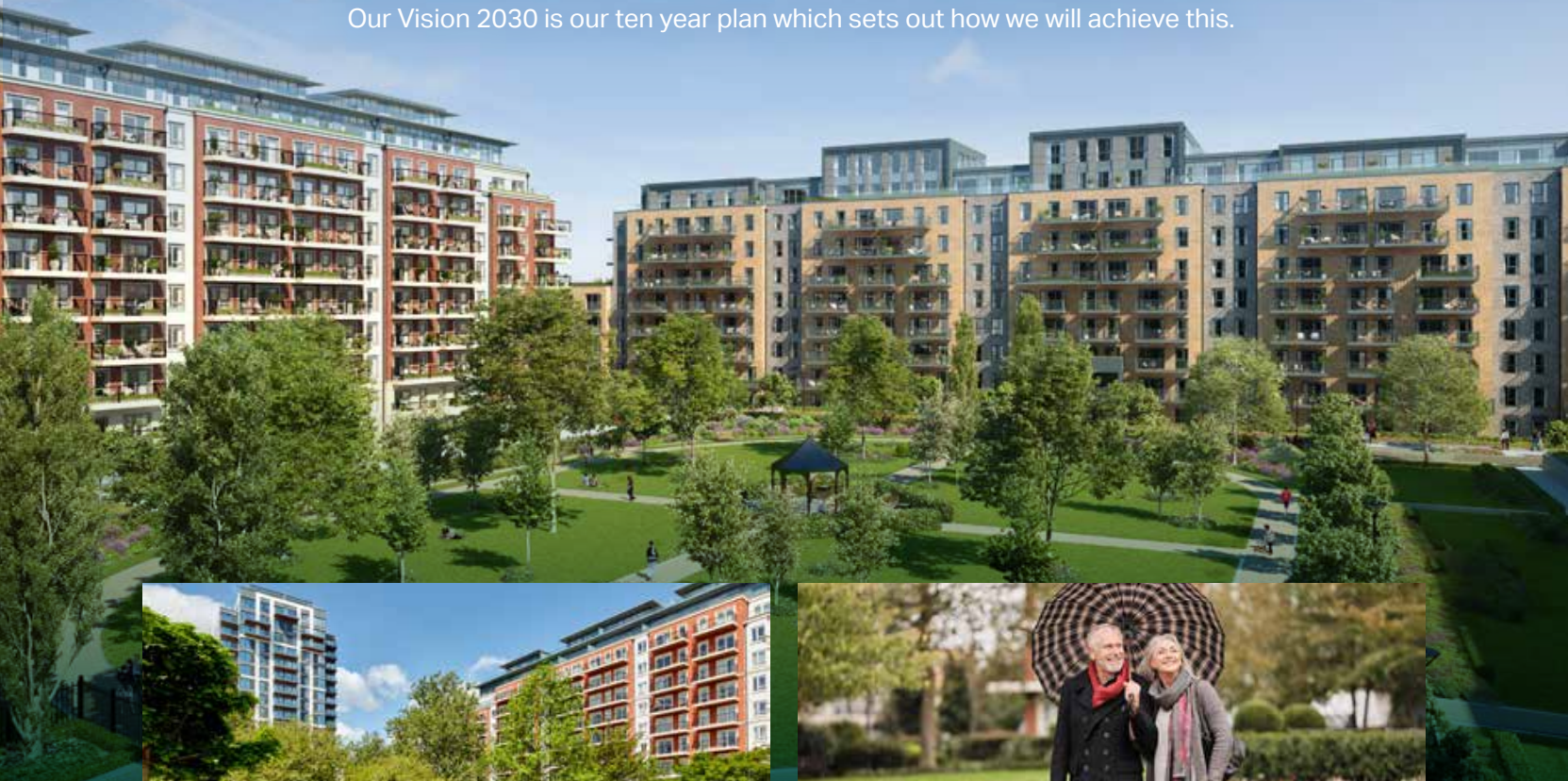
When we plan a development, we take a long-term view of how the community we create can thrive in years to come. Our aim is to permanently enhance the neighbourhoods in which they are located, through intelligent design, quality landscaping, sympathetic architecture or restoration, and high standards of sustainability. We don't just build for today; we build for the future too.

Transforming tomorrow

At Berkeley Group our passion and purpose is to build quality homes, strengthen communities and improve people's lives. We are innovating, pushing boundaries and taking action to ensure we have a long-term, positive impact that is good for our customers, the communities we touch, our business and the world around us.

We transform underused sites into exceptional places and we're also transforming the way we work; embracing technology and raising standards, as we continue to deliver an outstanding customer experience and create high-quality homes that delight our customers.

Our Vision 2030 is our ten year plan which sets out how we will achieve this.



Transforming places

Working with local people and partners we create welcoming and connected neighbourhoods where you can be proud to live.



Transforming lifestyles

Taking action on climate change and giving you ways to live more sustainably. We're building efficient homes that use less energy over their lifetime, with sustainable travel choices on the doorstep.



Transforming nature

Creating beautiful places with habitats that help nature to thrive, meaning that every site is left with more nature than when we began.



Transforming futures

Helping people to reach their potential through apprenticeships and training, and programmes supported by the Berkeley Foundation.



SUSTAINABILITY

This is how we are ensuring sustainability across our St George developments.

People, planet, prosperity

Sustainability is fundamental to Berkeley's ethos. In simple terms, we want to ensure the long-term health, wellbeing and prosperity of people and the planet. There are a range of ways we are managing and minimising the environmental impact of our operations and delivery of homes and communities.

Nature and biodiversity

Parkland, trees, flowers, green roofs, ponds, hedges, gardens – these are the fundamentals of a thriving natural environment that can be enjoyed by everyone. They are all part of our commitment to net biodiversity gain on our developments. We create natural habitats that encourage wildlife to flourish.

Waste and recycling

We actively encourage all residents to reduce their waste wherever possible. In addition to external recycling bins, we provide integrated recycling bins in kitchens to make it easier to separate and recycle waste.

Water efficiency

Our homes are designed to high water efficiency standards and are fitted with dual flush WCs, and low-flow taps and showerheads which use less water without compromising convenience and comfort. We also suggest simple steps to reduce water consumption, such as not leaving taps running unnecessarily.

Energy efficiency

Efficient use of electricity and gas helps lower fuel bills and reduces carbon emissions. Our homes have been designed to use less energy than a standard home. They have enhanced levels of thermal insulation and air-tightness, and all lighting is low energy.

Noise reduction

We can't eliminate noise, but we consider the impact of noise in the design of our homes. We consider external noise, such as from nearby roads, and internal noise including the transfer between rooms and floors. We incorporate measures to reduce the different types of noise wherever possible to create a quieter environment.

Clean air

It is hard to avoid polluted air, particularly in our cities. Throughout our developments we have planted trees, shrubs and flower beds to help create a cleaner air environment. Within our homes we provide mechanical ventilation to filter the internal air.

Future-proof design

From the early stages of design, we assess how our homes will stand up to the future effects of climate change, such as how they will be affected by higher summer temperatures, periods of drought, or more extreme rainfall. We are constantly researching how we can ensure our homes and developments are more resilient to these extremes.

WHAT IS MYHOME PLUS?

MyHome Plus is a new online service that is designed to help you manage key aspects of your new home at any time from anywhere around the world.



BUYING PROCESS

This section provides you with a step-by-step guide to the buying process from reservation through to completion, moving in and warranty. At each milestone, the buying process section advises on the next steps so that you can be absolutely clear on your current position and what to expect next.

1. FILING CABINET

In the filing cabinet section you can access documentation relating to your new home immediately at your own convenience.

2. MEET THE TEAM

This section provides an introduction to the team that will be working with you throughout your journey and details their individual roles. You can email any member of the team directly via this section.

3. OPTIONS & CHOICES SELECTION

We are able to offer some choices on certain internal finishes of your new home. Whether this option is available to you will depend on what stage of construction the property has reached at the time of you making your reservation. See the next steps section for further detail on this.

4. CONSTRUCTION PROGRESS

Under this section, regular updates on the construction of your new property will be provided, keeping you up to date on the progress on site and the local area. Your Customer Service Manager will issue regular newsletters and photographs to this section throughout your journey.

NEXT STEPS

- 1 Your Sales Consultant will send you a link that you will need to activate to access MyHome Plus. The link will require you to set a password for access.
- 2 Customer Service will then be in touch to invite you into our Show Apartment to view the interior selections available for the internal finishes that you have an option to select. If you cannot make it to the appointment, the options can be discussed over the telephone and selected via MyHome Plus. Customer Service will need to receive your choices selection by the deadline date, which will be given in advance.

AT YOUR SERVICE

From your first visit to the Beaufort Park Show Apartments & Marketing Suite through to completion of your new home and subsequent warranty period, St George is here to provide an exceptional personal service.

It's our team's special touches that make those months of anticipation a truly exciting time. We will provide you with regular progress updates throughout the construction of the apartment. We will also help you find your style among the bespoke interior design options for your kitchen, bathroom and flooring, via our dedicated selection process.

You can take a guided tour of Beaufort Park and your new home during the construction phase.

When your moving date arrives, we will be there to present your keys and provide a full demonstration of your apartment. Our dedicated service and warranty extends for a further two years after you move in.

CLICK HERE TO
ARRANGING A VIEWING
OR VIRTUAL TOUR

CONTACT DETAILS

+44 (0)20 8511 8600
sales@beaufortpark.co.uk
beaufortpark.co.uk



The information in this document is indicative and is intended to act as a guide only as to the finished product. Accordingly, due to St George's policy of continuous improvement, the finished product may vary from the information provided. These particulars should not be relied upon as statements of fact or representations and applicants must satisfy themselves by inspection or otherwise as to their correctness. This information does not constitute a contract or warranty. Fairbank Apartments is a marketing name and will not necessarily form part of the approved postal address. Applicants are advised to contact St George to ascertain the availability of any particular property. H044/41CA/081121. Purchasing uncompleted properties located outside Hong Kong is complicated and contains risk. You should review all relevant information and documents carefully. If in doubt, please seek independent professional advice before making a purchase decision. Planning permission number: H/04672/14, 18/3505/NMA, W00198AA/04. Borough/council issuing permission: London Borough of Barnet. Acquiring interest: 999-year leasehold interest from December 2005.



Sign in by visiting berkeleygroup.co.uk/my-home/sign-in



beaufortpark.co.uk