



CASPIAN WHARF
LONDON



the guide

The best restaurants, bars, shops,
universities and leisure facilities
within easy reach of Caspian Wharf



Berkeley
Designed for life



Situated in the heart of historic Limehouse, on the edge of Docklands and within easy reach of the fast-emerging London 2012 Olympic Park, the new luxury development at Caspian Wharf puts the whole of London on your doorstep.

Best of all, an apartment here opens up many opportunities for leisure, or exploring the local area. Presented with the compliments of Berkeley Homes, this special guide will give you a taste of the great dining places, shops, cultural attractions and education centres to be discovered in and around London E3.



Restaurants & Bars	Page
The Morgan Arms	4
The Crown	4
Gaucha	5
The Gun	6
Plateau	7
El Faro	7
Fifteen	8
Les Trois Garçon	8
Wapping Food	9
The Narrow	9
Le Pont de la Tour	10
Browns	11
Mehek	11
Coq D'Argent	11
The Guide Map / Locator	12
Universities	14

Leisure	Page
Reebok Sports Club	16
Museum in Docklands	16
Museum of Childhood	17
Whitechapel Art Gallery	17
The O2	18
Victoria Park	18
Limehouse Cut	19
Regent's Canal	19
Shopping	
Columbia Road Flower Market	20
A Butcher of Distinction	21
Labour & Wait	21
Waitrose	22
Canary Wharf	23

The Morgan Arms



43 Morgan Street
E3 5AA

www.geronimo-inns.co.uk
020 8980 6389

Mon - Weds: 12.00 - 23.00
Thurs - Sat: 12.00 - 24.00
Sun: 12.00 - 22.30

Nearest Tube: Mile End

The Morgan Arms is not only a welcoming, well cared for East London pub – and an Evening Standard Pub of the Year as recently as 2005 - but a true gourmet's paradise. It boasts with dishes ranging from the intriguing 'wally salsa' (pickled cucumber) to the mouth watering Pork Loin 'Cordon Bleu'.

The Crown

223 Grove Road
E3 5SN

www.geronimo-inns.co.uk
020 8880 7261

Mon - Sat: 12.00 - 23.00 (Sun 22.30)

Nearest Tube: Mile End

In a great spot offering lovely balcony views over Victoria Park, The Crown is one of the area's most acclaimed gastro pubs. With Ben Maschler, formerly of Soho House UK, now installed as chef, it offers a fine choice of beers and a dedication in wholesome British food such as classic toad-in-the-hole and the less familiar beer-battered pollack.



Gaucha

29 Westferry Circus
E14 8RR

www.gauchorestaurants.co.uk
020 7987 9494

Mon - Sun: 12.00 - 23.00

**Nearest Tube/DLR:
Canary Wharf**



On the riverfront, Gaucho is an Argentine restaurant renowned for its succulent steaks and Argentine-only wine list as well as its electric atmosphere and first-class service. If it's your first time, the Gaucho

selection board offering you a taster of 150g steaks is a must. Also recommended are the lobster and prawns served with a coconut and chilli dressing, and any of the poultry, fish and vegetable dishes.



The Gun

27 Coldharbour
E14 9NS

www.thegundocklands.com
020 7515 5222

Mon - Sun: 12.00 - 24.00
(Sun 23.00)

Nearest DLR: South Quay

A Grade II listed 18th century riverside pub favoured by Nelson and Lady Hamilton. Restoration has transformed the building. Its menu is better than ever in range and quality, majoring on traditional and modern classics and an eclectic mix of British and European dishes.



Plateau

4th Floor Canada Square
E14 5ER

www.danddlondon.com
020 7715 7100

Mon - Fri: 12.00 - 15.00
18.00 - 10.30

Sat: 18.00 - 22.30

Nearest Tube/DLR: Canary Wharf

Contemporary décor with views from the top of the Canada Place building make dining at Plateau a truly sophisticated experience. A British and European menu which is particularly strong on seafood.

El Faro

3 Turnberry Quay
Pepper Street
E14 9RD

www.el-faro.co.uk
020 7987 5511

Mon - Sat: 12.00 - 23.00
Sun: 12.00 - 15.30

Nearest DLR: Crossharbour

This restaurant is indeed the place for lovers of Spanish cuisine to savour specialities such as Asturian home-made chorizo sausage cooked in cider and oven roasted Segovian suckling pig served with trinxat, as well as a classic paella. A wine list that majors, naturally, on Iberian wines and a charming setting on Crossharbour Dock make for a richly enjoyable lunchtime or evening.



Fifteen



15 Westland Place
N1 7LP

www.fifteen.net
0871 330 1515

Breakfast, Lunch and Dinner
Mon - Sat: 7.30 - 22.00
Sun: 8.00 - 21.30

Nearest Tube: Old Street

Much scepticism greeted Jamie Oliver's noble plan to open a restaurant where the cooking was the responsibility of 15 youngsters plucked from unpromising backgrounds, trained by the king of pukka tucker himself. Now Fifteen is a well established addition to the City of London's restaurant offer and the concept has spread to Australia and Holland.

Les Trois Garçon

1 Club Row
E1 6JX

www.loungelover.co.uk
020 7613 1924

Mon - Sat: 19.00 - 24.00

Nearest Tube: Old Street

One of London E1's most elite eating places, its interior an astonishingly eclectic mix of styles and its food classic French with a Swiss twist, courtesy of chef Jerome Henry.



Wapping Food

Wapping Hydraulic Power Station
Wapping Wall
E1W 3SG

www.thewappingproject.com
020 7680 2080

Mon - Fri: 12.00 - 15.00, 18.30 - 23.00
Sat - Sun: 10.00 - 15.30, 19.00 - 23.00

Nearest Tube: Wapping

A hydraulic power station turned dining zone and arts centre. The food is largely British with a Mediterranean accent, such as squid paired with black pudding and a treat awaits anyone choosing the lavender and balsamic ice cream for dessert.

The Narrow

44 Narrow Street
E14 8DP

www.gordonramsay.com/thenarrow
020 7592 7950

Mon - Fri: 11.30 - 15.00, 18.00 - 23.00
Sat - Sun: 12.00 - 16.00, 17.00 - 23.00 (Sun: 22.30)

Nearest Tube/DLR: Limehouse

This relaxed and roomy Gordon Ramsay restaurant is housed in a Grade II listed building in Limehouse. The menu is focused on British food, from traditional roasts and grilled mackerel to battered monkfish and a range of classic puddings and tarts.



Le Pont de la Tour

36d Shad Thames
SE1 2YE

www.danddlondon.com
020 7403 8403

Mon - Sun: 12.00 - 15.00
18.00 - 23.00 (22.00 on Sun)

Nearest Tube: Tower Hill

French seafood restaurant par excellence with a wine list running to over 100 pages. The truly astonishing terrace views as much as the fabulous cooking and impeccable service will make the visit worthwhile. Recommendations include the risotto of wild mushrooms and Umbrian truffles and turbot served with hollandaise sauce and steamed potatoes.

Browns

34 Shad Thames
SE1 2YG

www.browns-restaurants.com
020 7378 1700

Mon - Sun: 10.00 - 23.00 (22.30 on Sun)

Nearest Tube: Tower Hill

A superb location adjacent to the Design Museum and overlooking Tower Bridge, together with quality food and sensible à la carte and set menu pricing, all make Browns a magnet for diners at lunchtime and in the evening. Remarkably, Browns seats more outside than it does inside, enabling covered al fresco dining throughout the year.



Mehek

45 London Wall
EC2M 5TE

www.mehek.co.uk
020 7588 5043

Mon - Fri: 11.30 - 15.00
17.30 - 23.00

Nearest Tube: Moorgate

Mehek promises diners a rich combination of regional Indian dishes covering a wide range of cooking styles. The emphasis is on pleasing the senses – the word ‘mehek’ means ‘fragrance’.

Coq D'Argent

No1 Poultry
EC2R 8EJ

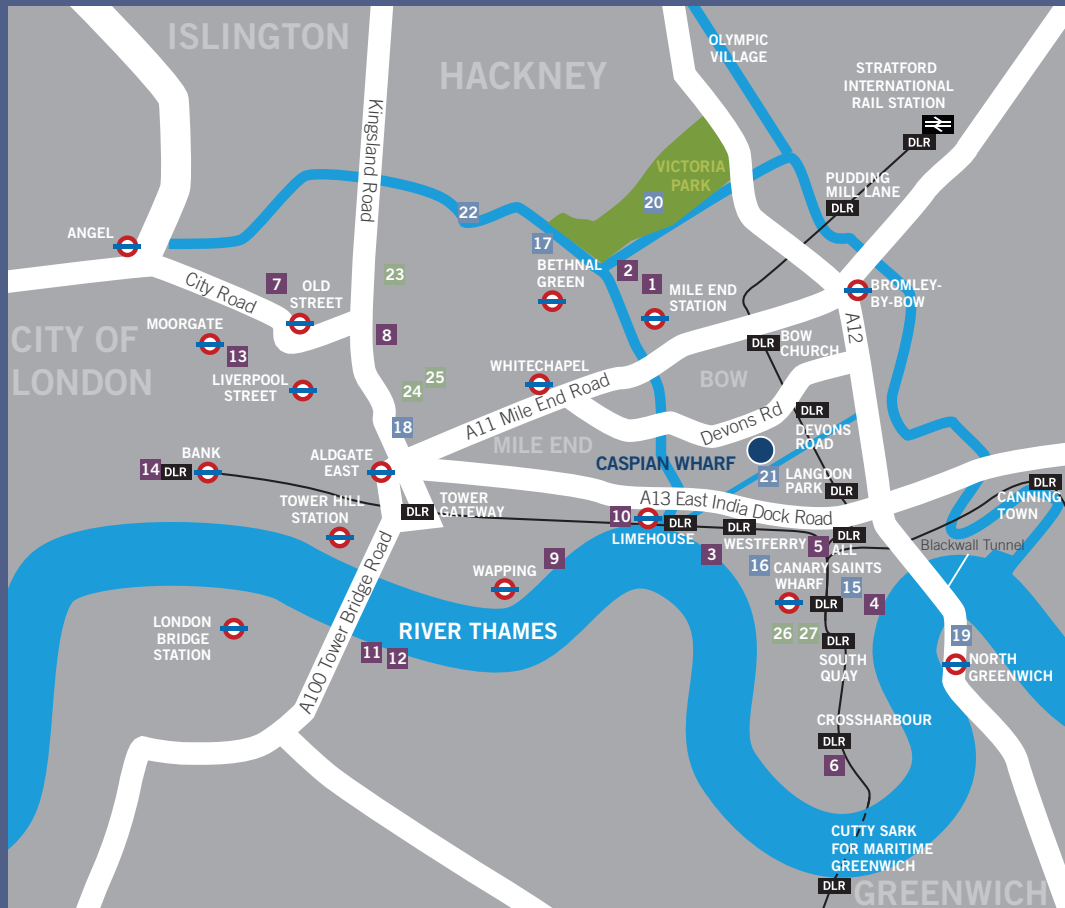
www.coqdargent.co.uk
020 7395 5000

Mon - Sun: 7.30 - 10.00
Mon - Fri, Sun: 11.30 - 15.00
Mon - Sat: 18.00 - 22.00

Nearest Tube/DLR: Bank

Classic dishes and a lengthy wine list will certainly fulfil any expectations. The fine roof garden must feature in anyone's list of their favourite City locations.





For decades, the potential of East London for private residential development remained untapped. Now, with the regeneration of Docklands almost complete and the Olympic Park taking shape in time for 2012, this area has truly come into its own.

Nearly all of the restaurants, shops and leisure facilities mentioned in this guide are just a short distance from Caspian Wharf. Please refer to the key to the right to find the location of each of the places featured.



Restaurants & Bars

- 1 The Morgan Arms
- 2 The Crown
- 3 Gaucho
- 4 The Gun
- 5 Plateau
- 6 El Faro
- 7 Fifteen
- 8 Les Trois Garçon
- 9 Wapping Food
- 10 The Narrow
- 11 Le Pont de la Tour
- 12 Browns
- 13 Mehek
- 14 Coq D'Argent

Leisure

- 15 Reebok Sports Club
- 16 Museum in Docklands
- 17 Museum of Childhood
- 18 Whitechapel Art Gallery
- 19 The O2

- 20 Victoria Park
- 21 Limehouse Cut
- 22 Regent's Canal

Shopping

- 23 Columbia Road Flower Market
- 24 A Butcher of Distinction
- 25 Labour & Wait
- 26 Waitrose
- 27 Canary Wharf

Universities in London

London is home to over 50 major centres of higher education as well as dozens of specialist vocational colleges. Because all of them attract students from across the country and around the world, suitable accommodation can

sometimes be scarce – which is why an apartment at Caspian Wharf may well be an appropriate option. Listed here are the main universities that can be reached easily from Caspian Wharf by Tube, bus or rail.



Queen Mary's University

Mile End Road, E1 4NS
www.qmul.ac.uk
 020 7882 5555

Nearest Tube: Mile End, Whitechapel

King's College London

Strand, WC2R 2LS
www.kcl.ac.uk
 020 7836 5454

Nearest Tube: Holborn, Temple

London Metropolitan

31 Jewry Street, EC3N 2EY
www.londonmet.ac.uk
 020 7423 0000

Nearest Tube: Aldgate, Tower Hill

City University

Northampton Square, EC1V 0HB
www.city.ac.uk
 020 7040 5060

Nearest Tube: Angel

London City College

Royal Waterloo House, 51-55, Waterloo Road, SE1 8TX
www.londoncitycollege.com
 020 7928 0029

Nearest Tube: Waterloo, Lambeth North

London School of Economics and Political Science

Houghton Street, WC2A 2AE
www.lse.ac.uk
 020 7405 7686

Nearest Tube: Holborn

South Bank University

90 London Road, SE1 6LN
www.lsbu.ac.uk
 020 7815 7815

Nearest Tube: Elephant & Castle

Goldsmiths University

New Cross, SE14 6NW
www.goldsmiths.ac.uk
 020 7919 7171

Nearest Tube: New Cross

Imperial College

South Kensington Campus, SW7 2AZ
www.imperial.ac.uk
 020 7589 5111

Nearest Tube: South Kensington

University College London

Gower Street, WC1E 6BT
www.ucl.ac.uk
 020 7679 2000

Nearest Tube: Euston Square, Warren Street, Goodge Street

University of Westminster

309 Regent Street, W1B 2UW
www.wmin.ac.uk
 020 7911 5000

Nearest Tube: Oxford Circus

University of East London

Docklands Campus, University Way, E16 2RD
www.uel.ac.uk
 020 8223 3000

Nearest Tube: Stratford

Reebok Sports Club

16-19 Canada Square
E14 5ER

www.reebokclub.co.uk
020 7970 0900

Nearest Tube/DLR: Canary Wharf

One of the largest private sports clubs in Europe, the Reebok Sports Club takes up an impressive 100,000 square feet of floor space – equivalent to three football pitches. Facilities include a Pilates studio, multi-sports hall, swimming pool, indoor golf, the largest spin studio in the UK, and a bar and restaurant.



Museum in Docklands

West India Quay
E14 4AL

www.museumindocklands.org.uk
0870 444 3857

Nearest DLR: West India Quay

Housed in a restored Georgian warehouse, this award-winning museum traces the history of London's docks, their importance to the British Empire and subsequent decline, right through to the regeneration of the area from the 1980s onwards.

Museum of Childhood

Cambridge Heath Road
E2 9PA

www.vam.ac.uk/moc
020 8983 5200

Nearest Tube: Bethnal Green

One of the most unusual museums in the whole of London, Bethnal Green Museum of Childhood collects and displays a huge number of toys, doll's houses, games, puppetry and play equipment going back many centuries.



Whitechapel Art Gallery



80-82 Whitechapel High Street
E1 7QX

www.whitechapel.org
020 7522 7888

Nearest Tube: Aldgate East

An innovative art gallery, famous for its exhibitions and an extensive local archive. The gallery is undergoing a £13m expansion ahead of its re-launch as the Whitechapel Laboratory.



The O2

Peninsula Square
SE10 0DX

www.theO2.co.uk
020 8463 2000

Nearest Tube: North Greenwich

London's new arena sets new standards in what to expect from a concert or sporting venue. The likes of the Rolling Stones, Prince, Take That and Bon Jovi have already played here, while the O2 is set to host some of the games at the 2012 Olympics.



Victoria Park

Hackney

Nearest Station: Hackney Wick

Victoria Park is a great place for a weekend stroll or family picnic with a large lake, children's playground, a small deer enclosure, and acres of broad green space.

Limehouse Cut

Limehouse

www.waterscape.com

Nearest Tube: Bromley-by-Bow

The oldest canal in London, the straight and broad Limehouse Cut runs directly alongside Caspian Wharf and acts as a short cut from the Thames at Limehouse Basin to the River Lee Navigation.



Regent's Canal

Limehouse to Paddington

www.waterscape.com

The canal opened in 1820 to link the Grand Union Canal at Paddington with the Thames at Limehouse, the once bustling Regent's Canal

is today one of London's best kept secrets – a quiet waterway graced by walkways and cycle paths, perfect for a scenic day out.

Columbia Road Flower Market

Columbia Road

E2 7RG

www.columbia-flower-market.freewebspace.com

Nearest Tube/Station: Old Street



Bethnal Green bursts into vibrant colours with floral displays to rival the old Covent Garden and with the Sundays-only market at Columbia Road is a true gardener's paradise.

Open 8.00 to 13.00, its 50 plus pitches probably offer easily the best selection of flowers, plants, shrubs, trees and bulbs available anywhere in London.

A Butcher of Distinction

11 Dray Walk

The Old Truman Brewery

E1 6QL

020 7770 6111

Nearest Tube: Aldgate East

This store's deliberately quirky name belies its business as one of London's most exclusive menswear suppliers. Described by one London guide as 'specialising in preppy-style clothes for those who like the stealth-wealth look', the shop's range includes Ralph Lauren, Levi's Vintage, Loomstate and Tricker's footwear.



Labour & Wait

18 Cheshire Street

E2 6EH

www.labourandwait.co.uk

020 7729 6253

Nearest Tube/Station: Liverpool Street



Labour and Wait is a store that delights in breaking the rules of contemporary retailing by stocking only items with timeless appeal and old world quality. However doubtful the usefulness of a crumb brush for cleaning tables or an old-style enamel mug, this is the place to find those goods you've coveted for years and never imagined you'd find.

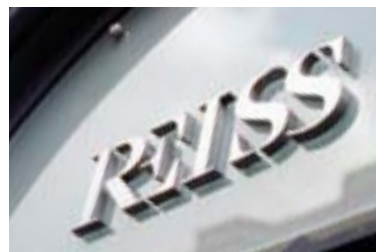
Waitrose

Canada Square
E14 5EW

www.waitrose.com
020 7719 0300

Nearest Tube/DLR: Canary Wharf

One of the centre pieces of Canary Wharf's ever-growing retail offer, the Canada Square branch of Waitrose Food and Home is everything you'd expect from this most upmarket of supermarket chains, but on a much bigger scale than any other Waitrose store you might have visited. With adjacent car parking, it's the supermarket of choice for locals and Canary Wharf workers alike.



Canary Wharf

Canary Wharf

www.mycanarywharf.com
020 7477 1477

Nearest Tube/DLR: Canary Wharf

As a financial centre of global importance, shopping is possibly not the first thing that comes to mind when Canary Wharf is mentioned. In the shadow of those famous towers lies one of London's most vibrant new retail hubs, containing a vast range of stores that would be the envy of many a large town.

You'll discover here a retail mix that's designed to meet all tastes and needs under one roof, from high street chains such as Boots, The Body Shop, Cecil Gee, Gap and Wallis to designer stores of the calibre of Thomas Pink, Karen Millen and Hobbs – not forgetting a plentiful supply of restaurants and coffee shops.



CASPIAN WHARF
LONDON



Call: 0844 800 1152

Caspian Wharf

55 Violet Road, London E3 3QR

Email: caspianwharf@berkeleyhomes.co.uk

www.berkeleyhomes.co.uk



Berkeley
Designed for life