



ST JAMES

The Fyfe Building

STJAMESHOMES.CO.UK



new river village

Homsey N8

Experience the vibrancy
& diverse cultures of
North London...



Photo composite of Fyfe Building.

The Fyfe Building sits adjacent to the New River on the award winning New River Village Development in Hornsey. Perfectly positioned between historic Alexandra Palace and bustling Crouch End, the development offers impressive transport links into both the City and the West End and affords its residents an exceptional contemporary lifestyle with a bar, restaurant, gymnasium, steam room, sauna and 24 hour concierge service.



Design specification that
combines pure style
& sophistication...



Photography from previous Fyfe Show Apartment and is indicative only.

Apartment Interiors

- White painted internal doors with aluminium door handles
- Built-in wardrobe with sliding door to bedroom 1. Timber effect to match finish in kitchen and bathroom
- Individually controlled electric panel heaters
- Washer dryer located in hall cupboard

Kitchens

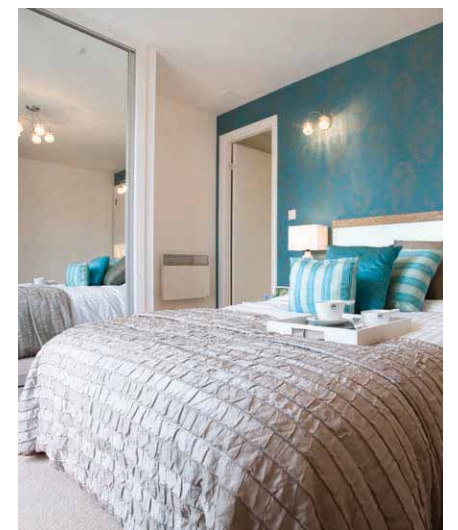
- Timber effect finish and neutral matt and gloss coloured laminated doors. Timber effect finish to match wardrobe and bathroom panelling
- Laminate worktop
- Mirror splash back
- Ceramic hob
- Integrated extractor fan
- Stainless steel, multi-function electric oven
- Fully integrated fridge freezer
- Fully integrated dishwasher
- Stainless steel 1½ bowl and mono block chrome mixer tap
- Below cabinet lighting

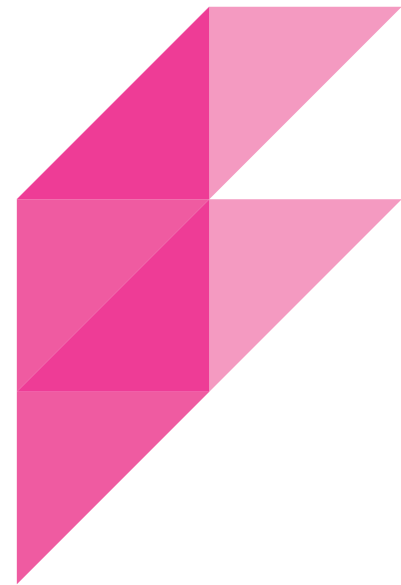
Bathrooms

- All bathrooms and ensuites are fitted with white sanitary ware
- Wall mounted WC with concealed cistern and chrome dual flush
- Chrome Hansgrohe mixer tap
- Bath screen
- Fully tiled floor
- Combination of mosaic and white ceramic wall tiles
- Chrome electric towel rail
- Mirror cabinet with integral down lighter and shaver socket (excluding units 6 and 8)
- Low level storage unit

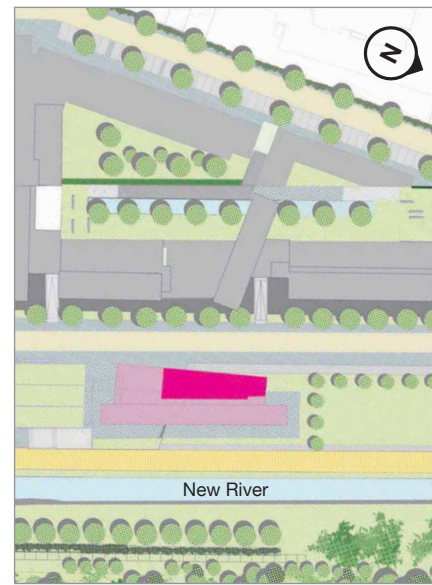
Other

- Video entry phone system
- Wired for Sky television in reception and master bedroom
- Tiled balconies or terraces to some apartments
- Cycle storage
- Full 10 year NHBC warranty
- Low energy light fittings to kitchen, hall, reception and bedroom



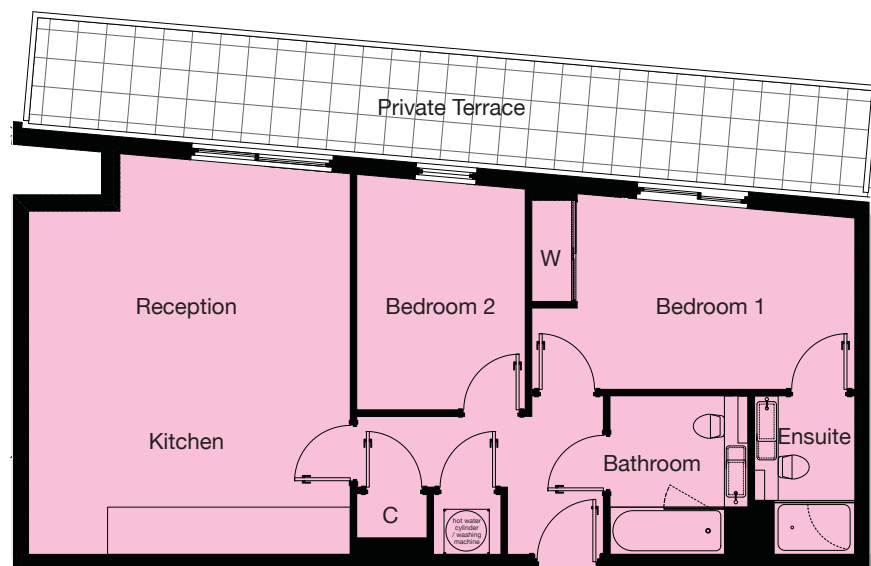


Ground floor Apartments 01 & 02



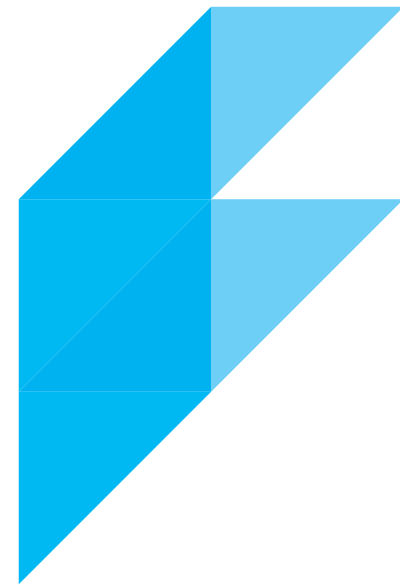
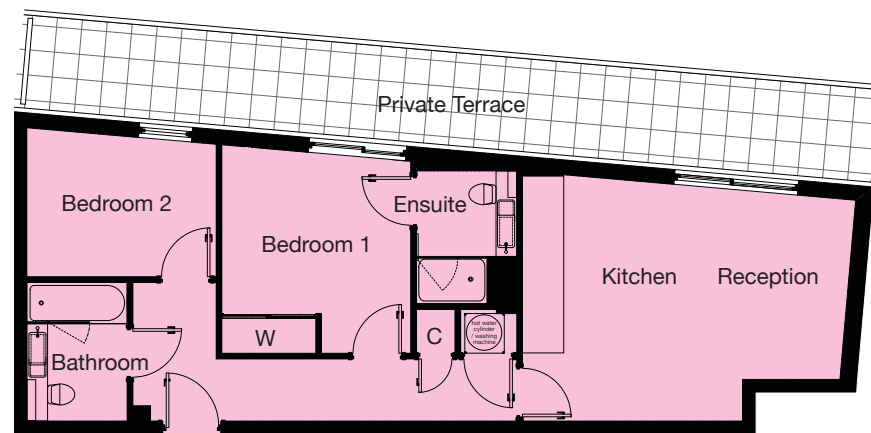
Apartment 01_

Reception/Kitchen: 5.90m x 4.75m 19' 4" x 15' 7"
Bedroom 1: 4.75m x 2.85m 15' 7" x 9' 4"
Bedroom 2: 3.45m x 2.50m 11' 3" x 8' 2"



Apartment 02_

Reception/Kitchen: 5.60m x 4.15m 18' 4" x 13' 7"
Bedroom 1: 3.54m x 3.20m 11' 7" x 10' 5"
Bedroom 2: 3.20m x 2.50m 10' 5" x 8' 2"

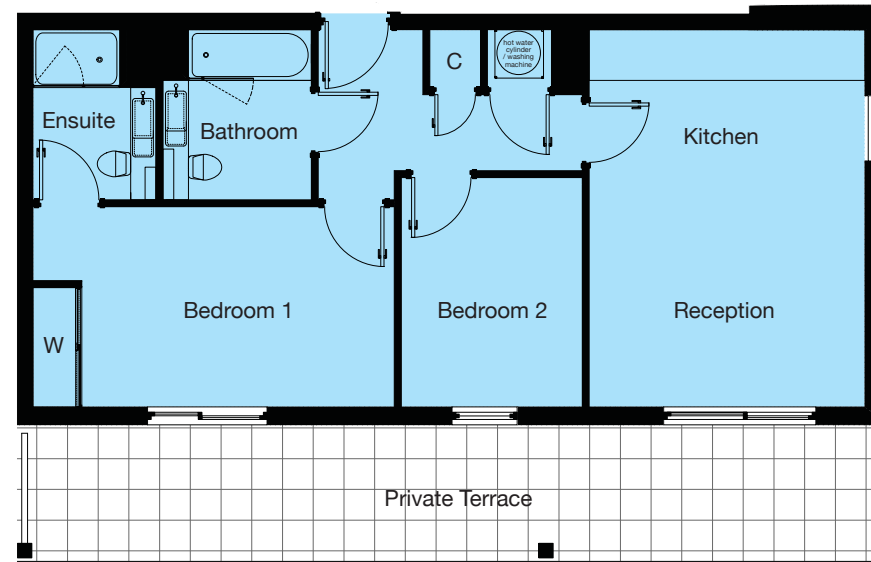


Ground floor Apartments 03 & 04



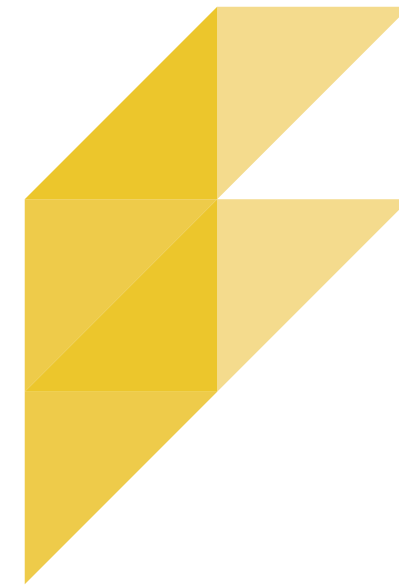
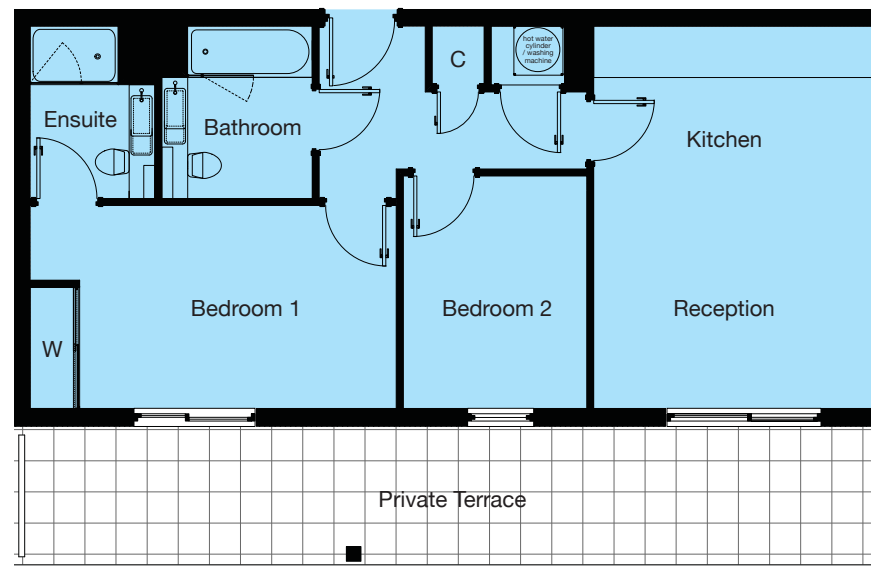
Apartment 03_

Reception/Kitchen: 5.20m x 3.75m 17' 0" x 12' 3"
Bedroom 1: 4.95m x 2.75m 16' 2" x 9' 0"
Bedroom 2: 3.15m x 2.50m 10' 4" x 8' 2"



Apartment 04_

Reception/Kitchen: 5.20m x 3.80m 17' 0" x 12' 5"
Bedroom 1: 4.95m x 2.75m 16' 2" x 9' 0"
Bedroom 2: 3.15m x 2.50m 10' 4" x 8' 2"

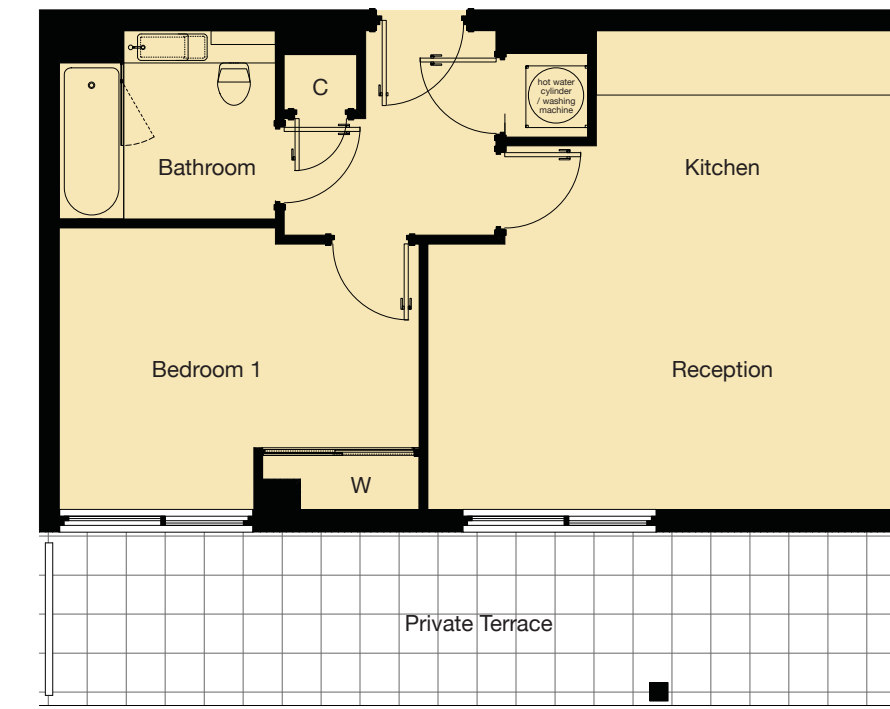


Ground floor Apartments 05 & 06



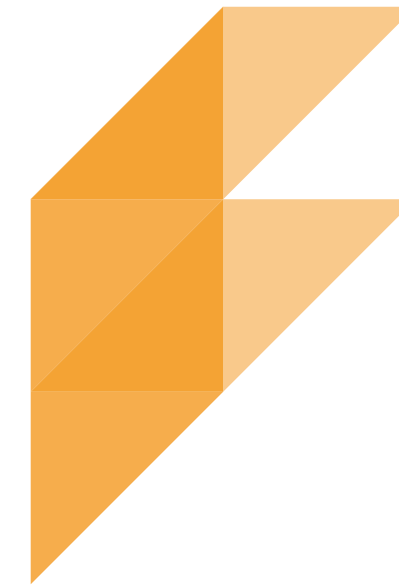
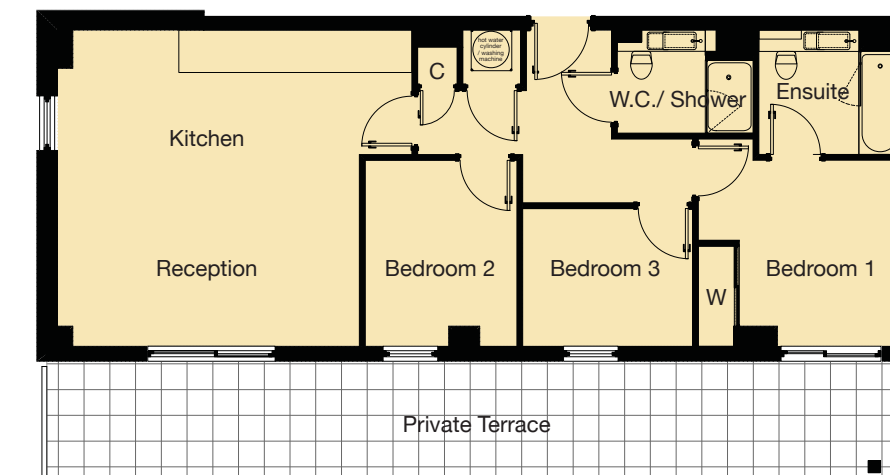
Apartment 05_

Reception/Kitchen: 5.20m x 5.05m 17' 0" x 16' 6"
Bedroom 1: 3.90m x 3.05m 12' 9" x 10' 0"



Apartment 06_

Reception/Kitchen: 5.20m x 4.95m 17' 0" x 16' 2"
Bedroom 1: 3.05m x 3.30m 10' 0" x 10' 9"
Bedroom 2: 3.05m x 2.50m 10' 0" x 8' 2"
Bedroom 3: 2.80m x 2.25m 9' 2" x 7' 4"

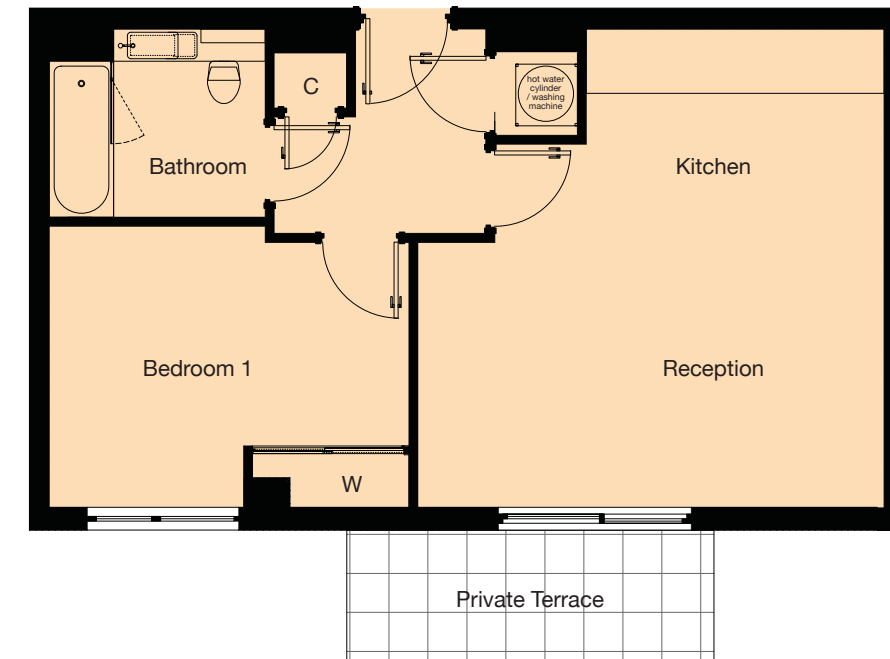


First floor Apartments 07 & 08



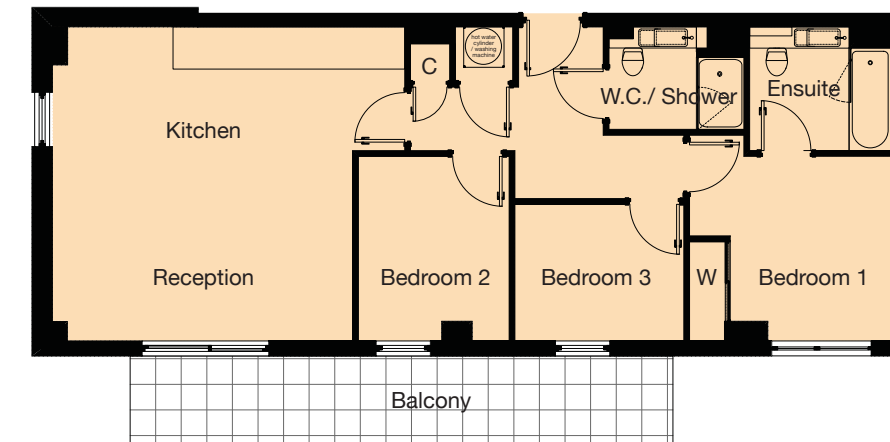
Apartment 07_

Reception/Kitchen: 5.20m x 5.05m 17' 0" x 16' 6"
Bedroom 1: 3.90m x 3.05m 12' 9" x 10' 0"



Apartment 08_

Reception/Kitchen: 5.20m x 4.95m 17' 0" x 16' 2"
Bedroom 1: 3.05m x 3.30m 10' 0" x 10' 9"
Bedroom 2: 3.05m x 2.50m 10' 0" x 8' 2"
Bedroom 3: 2.80m x 2.25m 9' 2" x 7' 4"

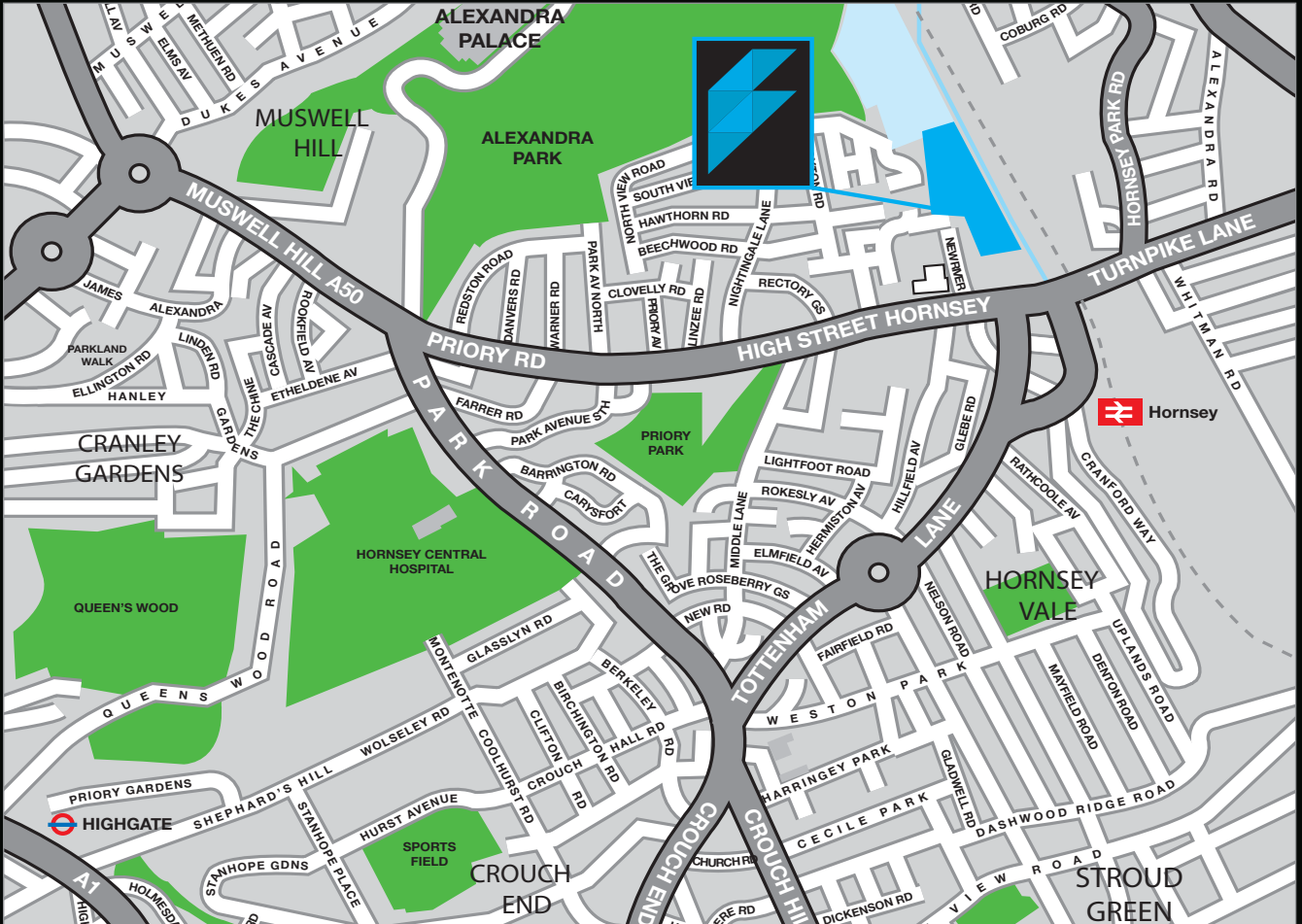


The dimensions indicated are accurate within plus or minus 5% tolerance and have been taken into the kitchen units and into the wardrobes. They are not intended to be used for carpet sizes, appliance sizes or items of furniture. St James Urban Living operates a policy of continuous product development and all bathroom and kitchen layouts are indicative only. Other room layouts may be subject to minor modification. For exact details and specifications please consult our appointed agents.

The Fyfe Building

St JAMES

URBANLIVING



Contact_

Show flat available to view by appointment. Please contact Currell Residential.

Currell
Residential
020 7226 4200
www.currell.com

Connections_

Approximate walking distances:

Hornsey railway station – 2 mins
Priory Park – 4 mins
Turnpike Lane tube station – 7 mins
Alexandra Palace – 10 mins
Crouch End Broadway – 10 mins
Muswell Hill Broadway – 14 mins
Highgate Wood – 30 mins

Central London:

Impressive transport links connect New River Village to the centre of London with tubes and rail stations close by. From Hornsey Station Kings Cross is just 10 minutes away, Moorgate 16 minutes and Old Street 10 minutes.

Outside of London:

The National Rail stations provide links to routes across the country while the Overland and Underground network can carry New River Village residents to City, Gatwick and Heathrow airports. The M1, M25, A10 and North Circular provide good access to the motorway network.

Information approximate and correct at time of going to press.

New River Village,
Hornsey High Street,
London N8 7QB
www.newrivervillage.co.uk



new river village

Hornsey N8