

Specification

Individually Designed Kitchen

- Traditional Styled Kitchen by Alno
- Granite worktop upstands and splashback
- Freestanding range cooker incorporating a double oven and ceramic hob
- Stainless steel chimney style re-circulating extractor with light
- Integrated fridge freezer
- Integrated dishwasher
- Integrated washer/dryer
- Undermounted stainless steel sink with chrome mixer taps
- Tiled floor

Quality Bathrooms

- Villeroy and Boch Hommage collection
- Hansgrohe Terrano chrome accessories
- Walk in shower with tiled floor and fixed glass panel to Master Ensuite
- Inset mirrored and shelved cabinet with light and shaver socket to both Bathrooms
- Tiled walls and floor

Heating

- Fully restored windows and stone mullions to Sitting Room
- Six panel white painted internal doors with traditional beehive chrome door furniture
- Retained and restored decorative fireplace to kitchen
- Dulux Heritage paint finish throughout
- Oak floor to Kitchen/Dining Room, Hall and Sitting Room
- Carpet to Bedrooms
- LPG fired central heating with mains pressure hot water
- Underfloor heating to Bathroom and Ensuite
- Radiators with individual thermostat controls
- Electronic programming for separate heating and hot water systems
- Independent immersion heater for hot water
- Chrome towel radiators to Bathroom and Ensuite

Finishing Touches and Restoration

- Downlights to Kitchen/Dining Room, Living Room and Bedrooms
 - Pendant lighting to Hall and Bedrooms
 - Table lamp circuit to Living Room and Master Bedroom
 - Low energy under wall unit lighting to Kitchen
- ### Home Entertainment and Communications
- Digitally compatible TV aerial points wired to Sitting room, Kitchen/Dining Room and Bedrooms
 - Wired for Computer Networking facility
 - Star wiring allows up to 4 ISDN and ADSL compatible phone lines to be provided to your home
- ### Security and Peace of Mind
- 10 year NHBC Buildmark Warranty Scheme
 - Mains fed smoke detector with battery back up fitted to Hallway
 - Fully wired for installation of a future alarm system
- ### Lease
- 125 Years
 - For details of Estate and Ground Rent charges, please ask the Sales Consultant for details.

Electrical and Lighting

For further details please contact:
01403 784016
www.summers-place.co.uk
Summers Place, Billingshurst
West Sussex RH14 9AD
Email: summers-place@berkeleyhomes.co.uk



APARTMENT SEVEN - THE MANOR HOUSE

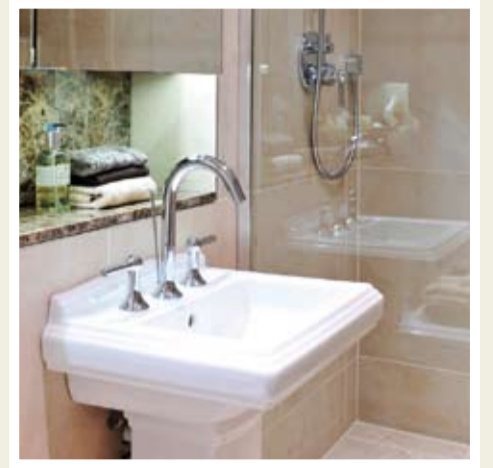


Apartment Seven

First Floor

2 bedroom apartment

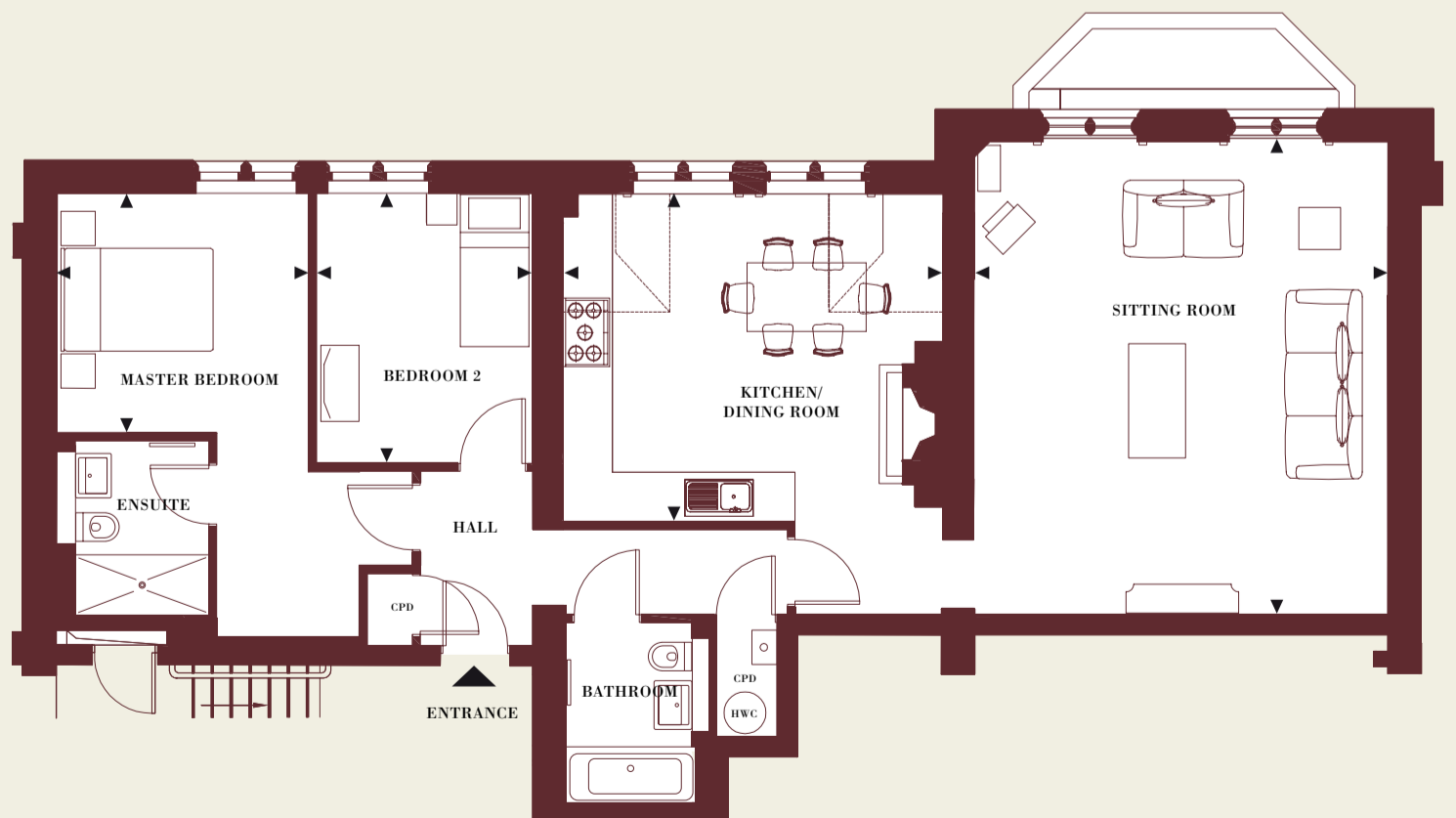
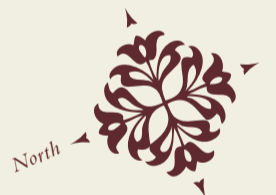
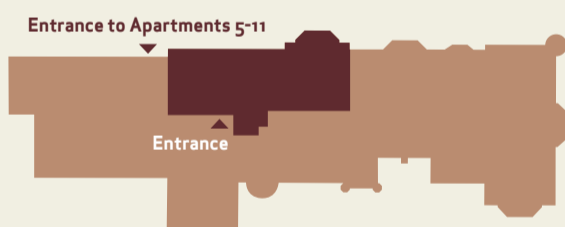
This superior two bedroom first floor apartment offers expansive living accommodation; The Sitting Room with its high ceilings, retained period fireplace and double full height restored windows to stone mullions offer an ideal entertaining space. From The Sitting Room windows you can see the fully restored castellation parapet, further enhancing the period features of this beautiful Manor House. The large Kitchen/ Dining Room, featuring a retained fireplace and surround, is also a perfect place in which to spend time with friends and family.



Photography depicts Apartment 7 details and view.

APARTMENT SEVEN - THE MANOR HOUSE

First Floor



Dimensions

Sitting Room	6210MM X 5435MM	20'4" X 17'8"
Kitchen/Dining Room	4305MM X 4990MM	14'2" X 16'4"
Master Bedroom (with ensuite shower room)	3300MM X 3150MM	10'8" X 10'3"
Bedroom 2	3550MM X 2840MM	11'7" X 9'3"

--- Depicts reduced ceiling height

◀▶ Depicts measurement points

⊙ Hot Water Cylinder ◻ Boiler