



CASPIAN WHARF
LONDON



Tasman Court: Floor Plans



Computer generated image of view from Tasman Court.



Welcome to Caspian Wharf



Located in the heart of one of the world's most cosmopolitan and dynamic capital cities, Caspian Wharf is ideally located for enjoying the benefits of Canary Wharf, the City of London and Stratford.

This area of London is to undergo an exciting transformation, with the arrival of Westfield's Stratford City and the London Olympics in 2012. Just 6 minutes away on the Docklands Light Railway from Devons Road, Stratford International will also become a gateway to Europe with the arrival of Eurostar services to the continent.

Caspian Wharf introduces a new height of sophisticated city living in London.

Tasman Court, pure inspiration



Computer generated image of Tasman Court.

Caspian Wharf is a stunning new development by Berkeley Homes, located in one of the worlds most cosmopolitan and vibrant cities.

Tasman Court, the next phase to be released features a stunning nine storey building in prime position overlooking the landscaped gardens with views towards Canary Wharf. Facing the tranquil waters of the Limehouse Cut Canal, Tasman Court comprises a mix of contemporary one, two and three bedroom apartments and penthouses, many of which benefit from their own outside space in the form of a balcony, terrace or private garden.

Caspian Wharf is the ultimate location to make the most of not only Canary Wharf, but also the London 2012 Olympic Park in Stratford, the new Westfield Shopping centre and the City of London.



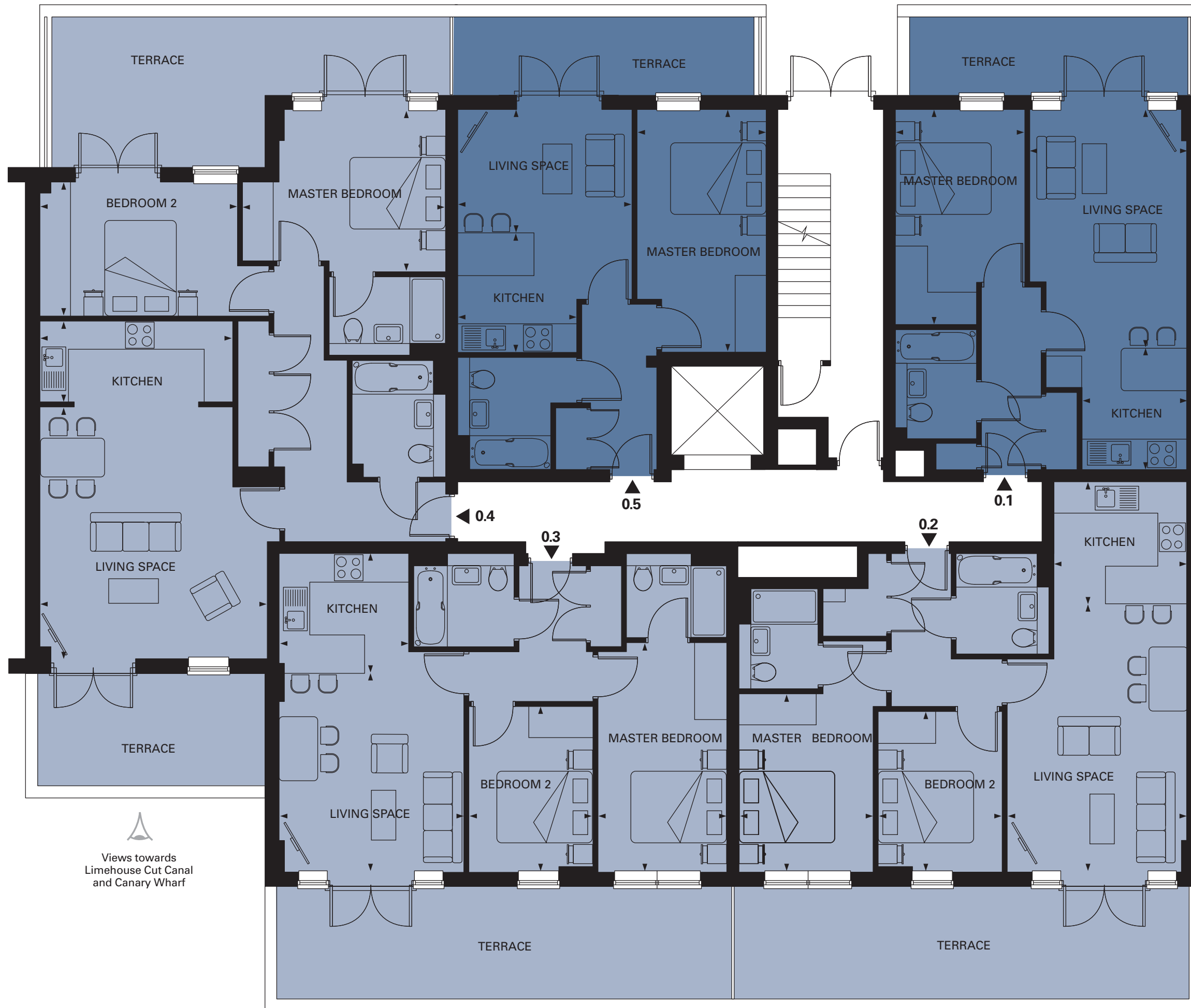
Image for indicative purposes only.



Ground Floor Apartments

Views towards
Landscaped Gardens

Views towards
Landscaped Gardens



Views towards
Limehouse Cut Canal
and Canary Wharf

Views towards
Limehouse Cut Canal
and Canary Wharf

Views towards
Limehouse Cut Canal
and Canary Wharf

Unit 0.1

Living Space	4.98 m x 3.28m	16' 4" x 10' 9"
Kitchen	2.55m x 2.18m	8' 4" x 7' 2"
Master Bedroom	4.50m x 2.70m	14' 9" x 8' 10"
Total	45.3 sq m	487 sq ft
Terrace	9.2 sq m	99 sq ft

Unit 0.2

Living Space	5.60m x 3.75m	18' 5" x 12' 4"
Kitchen	2.55m x 2.73m	8' 4" x 8' 9"
Master Bedroom	3.72m x 2.80m	12' 3" x 9' 2"
Bedroom 2	3.35m x 2.60m	11' 0" x 8' 6"
Total	64.6 sq m	695 sq ft
Terrace	22.3 sq m	240 sq ft

Unit 0.3

Living Space	4.15m x 3.85m	13' 7" x 12' 8"
Kitchen	2.46m x 2.66m	8' 0" x 8' 7"
Master Bedroom	4.79m x 2.70m	15' 9" x 8' 10"
Bedroom 2	3.45m x 2.60m	11' 4" x 8' 6"
Total	62.2 sq m	669 sq ft
Terrace	22.3 sq m	240 sq ft

Unit 0.4

Living Space	5.26m x 4.75m	17' 3" x 15' 7"
Kitchen	1.70m x 4.03m	5' 7" x 13' 3"
Master Bedroom	3.39m x 4.25m	11' 2" x 13' 11"
Bedroom 2	2.80m x 4.12m	9' 2" x 13' 6"
Total	80.4 sq m	865 sq ft
Terrace	28.4 sq m	305 sq ft

Unit 0.5

Living Space	2.58m x 3.65m	8' 5" x 12' 0"
Kitchen	2.50m x 2.50m	8' 2" x 8' 2"
Master Bedroom	5.07m x 2.70m	16' 7" x 8' 10"
Total	42.9 sq m	461 sq ft
Terrace	10.2 sq m	109 sq ft

Key

- 1 Bedroom Apartment
- 2 Bedroom Apartment

Tasman Court apartment layouts provide approximate measurements only. Dimensions, which are taken from the indicated points of measurement are for guidance only and are not intended to be used for carpet sizes, appliance space or items of furniture. Total areas are provided as gross internal areas under the RICS measuring practice. All measurements and areas may vary within a tolerance of 5%. Kitchen layouts are indicative only and are subject to change. Views are indicative only.



First Floor Apartments



Unit 1.1

Living Space	4.98m x 3.28m	16' 4" x 10' 9"
Kitchen	2.51m x 2.18m	8' 2" x 7' 2"
Master Bedroom	4.50m x 2.70m	14' 9" x 8' 10"
Total	45.3 sq m	487 sq ft
Balcony	3.1 sq m	33 sq ft

Unit 1.2

Living Space	5.60m x 3.75m	18' 5" x 12' 4"
Kitchen	2.51m x 2.73m	8' 2" x 8' 9"
Master Bedroom	3.72m x 2.80m	12' 3" x 9' 2"
Bedroom 2	3.35m x 2.60m	11' 0" x 8' 6"
Total	64.6 sq m	695 sq ft
Balcony	7.6 sq m	81 sq ft

Unit 1.3

Living Space	4.15m x 3.85m	13' 7" x 12' 8"
Kitchen	2.46m x 2.66m	8' 0" x 8' 7"
Master Bedroom	4.79m x 2.70m	15' 9" x 8' 10"
Bedroom 2	3.45m x 2.60m	11' 4" x 8' 6"
Total	62.2 sq m	669 sq ft
Balcony	7.6 sq m	81 sq ft

Unit 1.4

Living Space	3.46m x 4.75m	11' 4" x 15' 7"
Kitchen	2.45m x 1.80m	8' 0" x 5' 10"
Master Bedroom	4.20m x 2.75m	13' 9" x 9' 0"
Bedroom 2	3.05m x 2.55m	10' 0" x 8' 4"
Total	64.3 sq m	692 sq ft
Balcony	3.9 sq m	41 sq ft

Unit 1.5

Living Space	4.26m x 2.95m	13' 11" x 9' 8"
Kitchen	3.72m x 2.31m	12' 2" x 7' 6"
Master Bedroom	3.22m x 3.00m	10' 7" x 9' 10"
Bedroom 2	3.46m x 2.60m	11' 5" x 8' 6"
Total	59.0 sq m	635 sq ft
Balcony	3.1 sq m	33 sq ft

Key

1 Bedroom Apartment
 2 Bedroom Apartment

North

Tasman Court apartment layouts provide approximate measurements only. Dimensions, which are taken from the indicated points of measurement are for guidance only and are not intended to be used for carpet sizes, appliance space or items of furniture. Total areas are provided as gross internal areas under the RICS measuring practice. All measurements and areas may vary within a tolerance of 5%. Kitchen layouts are indicative only and are subject to change. Views are indicative only.



Second Floor Apartments



Unit 2.1

Living Space	4.98m x 3.28m	16' 4" x 10' 9"
Kitchen	2.51m x 2.18m	8' 2" x 7' 2"
Master Bedroom	4.50m x 2.70m	14' 9" x 8' 10"
Total	45.3 sq m	487 sq ft
Balcony	3.1 sq m	33 sq ft

Unit 2.2

Living Space	5.60m x 3.75m	18' 5" x 12' 4"
Kitchen	2.51m x 2.73m	8' 2" x 8' 9"
Master Bedroom	3.72m x 2.80m	12' 3" x 9' 2"
Bedroom 2	3.35m x 2.60m	11' 0" x 8' 6"
Total	64.6 sq m	695 sq ft
Balcony	7.6 sq m	81 sq ft

Unit 2.3

Living Space	4.15m x 3.85m	13' 7" x 12' 8"
Kitchen	2.46m x 2.66m	8' 0" x 8' 7"
Master Bedroom	4.79m x 2.70m	15' 9" x 8' 10"
Bedroom 2	3.45m x 2.60m	11' 4" x 8' 6"
Total	62.2 sq m	669 sq ft
Balcony	7.6 sq m	81 sq ft

Unit 2.4

Living Space	3.46m x 4.75m	11' 4" x 15' 7"
Kitchen	2.45m x 1.80m	8' 0" x 5' 10"
Master Bedroom	4.20m x 2.75m	13' 9" x 9' 0"
Bedroom 2	3.05m x 2.55m	10' 0" x 8' 4"
Total	64.3 sq m	692 sq ft
Balcony	3.9 sq m	41 sq ft

Unit 2.5

Living Space	4.26m x 2.95m	13' 11" x 9' 8"
Kitchen	3.72m x 2.31m	12' 2" x 7' 6"
Master Bedroom	3.22m x 3.00m	10' 7" x 9' 10"
Bedroom 2	3.46m x 2.60m	11' 5" x 8' 6"
Total	59.0 sq m	635 sq ft
Balcony	3.1 sq m	33 sq ft

Key

- 1 Bedroom Apartment (light blue square)
- 2 Bedroom Apartment (medium blue square)

North

Tasman Court apartment layouts provide approximate measurements only. Dimensions, which are taken from the indicated points of measurement are for guidance only and are not intended to be used for carpet sizes, appliance space or items of furniture. Total areas are provided as gross internal areas under the RICS measuring practice. All measurements and areas may vary within a tolerance of 5%. Kitchen layouts are indicative only and are subject to change. Views are indicative only.



Third Floor Apartments



Unit 3.1

Living Space	4.98m x 3.28m	16' 4" x 10' 9"
Kitchen	2.51m x 2.18m	8' 2" x 7' 2"
Master Bedroom	4.50m x 2.70m	14' 9" x 8' 10"
Total	45.3 sq m	487 sq ft
Balcony	3.1 sq m	33 sq ft

Unit 3.2

Living Space	5.60m x 3.75m	18' 5" x 12' 4"
Kitchen	2.51m x 2.73m	8' 2" x 8' 9"
Master Bedroom	3.72m x 2.80m	12' 3" x 9' 2"
Bedroom 2	3.35m x 2.60m	11' 0" x 8' 6"
Total	64.6 sq m	695 sq ft
Balcony	7.6 sq m	81 sq ft

Unit 3.3

Living Space	4.15m x 3.85m	13' 7" x 12' 8"
Kitchen	2.46m x 2.66m	8' 0" x 8' 7"
Master Bedroom	4.79m x 2.70m	15' 9" x 8' 10"
Bedroom 2	3.45m x 2.60m	11' 4" x 8' 6"
Total	62.2 sq m	669 sq ft
Balcony	7.6 sq m	81 sq ft

Unit 3.4

Living Space	3.46m x 4.75m	11' 4" x 15' 7"
Kitchen	2.45m x 1.80m	8' 0" x 5' 10"
Master Bedroom	4.20m x 2.75m	13' 9" x 9' 0"
Bedroom 2	3.05m x 2.55m	10' 0" x 8' 4"
Total	64.3 sq m	692 sq ft
Balcony	3.9 sq m	41 sq ft

Unit 3.5

Living Space	4.26m x 2.95m	13' 11" x 9' 8"
Kitchen	3.72m x 2.31m	12' 2" x 7' 6"
Master Bedroom	3.22m x 3.00m	10' 7" x 9' 10"
Bedroom 2	3.46m x 2.60m	11' 5" x 8' 6"
Total	59.0 sq m	635 sq ft
Balcony	3.1 sq m	33 sq ft

Key

1 Bedroom Apartment
 2 Bedroom Apartment

North

Tasman Court apartment layouts provide approximate measurements only. Dimensions, which are taken from the indicated points of measurement are for guidance only and are not intended to be used for carpet sizes, appliance space or items of furniture. Total areas are provided as gross internal areas under the RICS measuring practice. All measurements and areas may vary within a tolerance of 5%. Kitchen layouts are indicative only and are subject to change. Views are indicative only.



Fourth Floor Apartments



Unit 4.1

Living Space	5.95m x 3.75m	19' 6" x 12' 4"
Kitchen	2.60m x 2.84m	8' 6" x 9' 3"
Master Bedroom	4.71m x 3.29m	15' 5" x 10' 10"
Bedroom 2	4.49m x 2.69m	14' 9" x 8' 10"
Bedroom 3	3.93m x 2.60m	12' 11" x 8' 6"
Total	93 sq m	1001 sq ft
Balcony	6.2 sq m	66 sq ft

Unit 4.2

Living Space	4.25m x 3.22m	14' 0" x 10' 7"
Kitchen	2.42m x 3.46m	7' 9" x 11' 3"
Master Bedroom	4.27m x 2.60m	14' 0" x 8' 6"
Total	41.0 sq m	441 sq ft
Balcony	3.4 sq m	36 sq ft

Unit 4.3

Living Space	4.10m x 3.38m	13' 6" x 11' 1"
Kitchen	2.51m x 2.18m	8' 2" x 7' 2"
Master Bedroom	4.27m x 2.60m	14' 0" x 8' 6"
Total	40.5 sq m	435 sq ft
Balcony	3.1 sq m	33 sq ft

Unit 4.4

Living Space	4.75m x 3.06m	15' 7" x 10' 0"
Kitchen	4.30m x 2.60m	14' 1" x 8' 6"
Master Bedroom	3.04m x 3.36m	10' 0" x 11' 0"
Bedroom 2	4.20m x 2.67m	13' 9" x 8' 9"
Bedroom 3	3.05m x 2.60m	10' 0" x 8' 6"
Total	79.5 sq m	855 sq ft
Balcony	7 sq m	74 sq ft

Unit 4.5

Living Space	3.97m x 3.65m	13' 0" x 12' 0"
Kitchen	2.50m x 2.50m	8' 2" x 8' 2"
Master Bedroom	5.07m x 2.70m	16' 7" x 8' 10"
Total	42.9 sq m	461 sq ft
Balcony	4.7 sq m	50 sq ft

Key

- 1 Bedroom Apartment
- 3 Bedroom Apartment

North

Tasman Court apartment layouts provide approximate measurements only. Dimensions, which are taken from the indicated points of measurement are for guidance only and are not intended to be used for carpet sizes, appliance space or items of furniture. Total areas are provided as gross internal areas under the RICS measuring practice. All measurements and areas may vary within a tolerance of 5%. Kitchen layouts are indicative only and are subject to change. Views are indicative only.



Fifth Floor Apartments



Unit 5.1

Living Space	5.95m x 3.75m	19' 6" x 12' 4"
Kitchen	2.60m x 2.84m	8' 6" x 9' 3"
Master Bedroom	4.71m x 3.29m	15' 5" x 10' 10"
Bedroom 2	4.49m x 2.69m	14' 9" x 8' 10"
Bedroom 3	3.93m x 2.60m	12' 11" x 8' 6"
Total	93 sq m	1001 sq ft
Balcony	6.2 sq m	66 sq ft

Unit 5.2

Living Space	4.25m x 3.22m	14' 0" x 10' 7"
Kitchen	2.42m x 3.46m	7' 9" x 11' 3"
Master Bedroom	4.27m x 2.60m	14' 0" x 8' 6"
Total	41.0 sq m	441 sq ft
Balcony	3.4 sq m	36 sq ft

Unit 5.3

Living Space	4.10m x 3.38m	13' 6" x 11' 1"
Kitchen	2.51m x 2.18m	8' 2" x 7' 2"
Master Bedroom	4.27m x 2.60m	14' 0" x 8' 6"
Total	40.5 sq m	435 sq ft
Balcony	3.1 sq m	33 sq ft

Unit 5.4

Living Space	4.75m x 3.06m	15' 7" x 10' 0"
Kitchen	4.30m x 2.60m	14' 1" x 8' 6"
Master Bedroom	3.04m x 3.36m	10' 0" x 11' 0"
Bedroom 2	4.20m x 2.67m	13' 9" x 8' 9"
Bedroom 3	3.05m x 2.60m	10' 0" x 8' 6"
Total	79.5 sq m	855 sq ft
Balcony	7 sq m	74 sq ft

Unit 5.5

Living Space	3.97m x 3.65m	13' 0" x 12' 0"
Kitchen	2.50m x 2.50m	8' 2" x 8' 2"
Master Bedroom	5.07m x 2.70m	16' 7" x 8' 10"
Total	42.9 sq m	461 sq ft
Balcony	4.7 sq m	50 sq ft

Key

1 Bedroom Apartment
 3 Bedroom Apartment

North

Tasman Court apartment layouts provide approximate measurements only. Dimensions, which are taken from the indicated points of measurement are for guidance only and are not intended to be used for carpet sizes, appliance space or items of furniture. Total areas are provided as gross internal areas under the RICS measuring practice. All measurements and areas may vary within a tolerance of 5%. Kitchen layouts are indicative only and are subject to change. Views are indicative only.



Sixth Floor Apartments



Unit 6.1

Living Space	5.97m x 3.75m	19' 7" x 12' 4"
Kitchen	2.60m x 2.84m	8' 6" x 9' 3"
Master Bedroom	4.71m x 3.29m	15' 5" x 10' 10"
Bedroom 2	4.49m x 2.69m	14' 9" x 8' 10"
Bedroom 3	3.93m x 2.60m	12' 11" x 8' 6"
Total	93 sq m	1001 sq ft
Balcony	6.2 sq m	66 sq ft

Unit 6.2

Living Space	4.25m x 3.22m	14' 0" x 10' 7"
Kitchen	2.42m x 3.46m	7' 9" x 11' 3"
Master Bedroom	4.27m x 2.60m	14' 0" x 8' 6"
Total	41.0 sq m	441 sq ft
Balcony	3.4 sq m	36 sq ft

Unit 6.3

Living Space	4.10m x 3.38m	13' 6" x 11' 1"
Kitchen	2.51m x 2.18m	8' 2" x 7' 2"
Master Bedroom	4.27m x 2.60m	14' 0" x 8' 6"
Total	40.5 sq m	435 sq ft
Balcony	3.1 sq m	33 sq ft

Unit 6.4

Living Space	4.75m x 3.06m	15' 7" x 10' 0"
Kitchen	4.30m x 2.60m	14' 1" x 8' 6"
Master Bedroom	3.04m x 3.36m	10' 0" x 11' 0"
Bedroom 2	4.20m x 2.67m	13' 9" x 8' 9"
Bedroom 3	3.05m x 2.60m	10' 0" x 8' 6"
Total	79.5 sq m	855 sq ft
Balcony	7 sq m	74 sq ft

Unit 6.5

Living Space	2.58m x 3.65m	8' 5" x 12' 0"
Kitchen	2.50m x 2.50m	8' 2" x 8' 2"
Master Bedroom	5.07m x 2.70m	16' 7" x 8' 10"
Total	42.9 sq m	461 sq ft
Balcony	4.7 sq m	50 sq ft

Key

- 1 Bedroom Apartment
- 3 Bedroom Apartment

North

Tasman Court apartment layouts provide approximate measurements only. Dimensions, which are taken from the indicated points of measurement are for guidance only and are not intended to be used for carpet sizes, appliance space or items of furniture. Total areas are provided as gross internal areas under the RICS measuring practice. All measurements and areas may vary within a tolerance of 5%. Kitchen layouts are indicative only and are subject to change. Views are indicative only.



Seventh Floor Apartments



Unit 71

Living Space	4.98m x 3.28m	16' 4" x 10' 9"
Kitchen	2.51m x 2.29m	8' 2" x 7' 6"
Master Bedroom	4.50m x 2.70m	14' 9" x 8' 10"
Total	45.2 sq m	486 sq ft
Balcony	3.1 sq m	33 sq ft

Unit 72

Living Space	5.60m x 3.75m	18' 5" x 12' 4"
Kitchen	2.51m x 2.73m	8' 2" x 8' 9"
Master Bedroom	3.72m x 2.80m	12' 3" x 9' 2"
Bedroom 2	3.35m x 2.60m	11' 0" x 8' 6"
Total	64.6 sq m	695 sq ft
Balcony	3.1 sq m	33 sq ft

Unit 73

Living Space	4.45m x 3.85m	14' 7" x 12' 8"
Kitchen	2.65m x 3.42m	8' 8" x 11' 3"
Master Bedroom	4.45m x 2.70m	14' 7" x 8' 10"
Bedroom 2	3.45m x 2.55m	11' 3" x 8' 4"
Bedroom 3	3.30m x 2.60m	10' 10" x 8' 6"
Winter Garden Room	3.40m x 2.90m	11' 1" x 9' 6"
Total	87 sq m	936 sq ft
Balcony	3.1 sq m	33 sq ft
Terrace	36.6 sq m	393 sq ft

Unit 74

Living Space	3.48m x 4.07m	11' 5" x 13' 4"
Kitchen	2.56m x 3.59m	8' 6" x 11' 10"
Master Bedroom	3.22m x 3.29m	10' 7" x 10' 10"
Bedroom 2	3.40m x 2.60m	11' 2" x 8' 6"
Winter Garden Room	3.40m x 2.90m	11' 1" x 9' 6"
Total	76.1 sq m	819 sq ft
Balcony	3.1 sq m	33 sq ft
Terrace	26.7 sq m	287 sq ft

Key

- 1 Bedroom Apartment
- 2 Bedroom Apartment
- 3 Bedroom Apartment



NOTE: Winter Gardens are subject to planning.
* Windows are subject to planning.

Tasman Court apartment layouts provide approximate measurements only. Dimensions, which are taken from the indicated points of measurement are for guidance only and are not intended to be used for carpet sizes, appliance space or items of furniture. Total areas are provided as gross internal areas under the RICS measuring practice. All measurements and areas may vary within a tolerance of 5%. Kitchen layouts are indicative only and are subject to change. Views are indicative only.



Eighth Floor Apartments



Unit 8.1

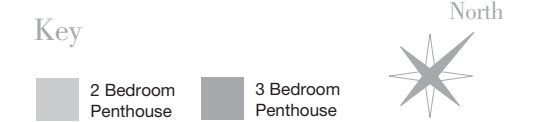
Living Space	5.95m x 3.75m	19' 6" x 12' 4"
Kitchen	2.60m x 2.84m	8' 6" x 9' 3"
Master Bedroom	4.71m x 3.29m	15' 5" x 10' 10"
Bedroom 2	4.60m x 2.69m	15' 1" x 8' 10"
Bedroom 3	3.93m x 2.60m	12' 11" x 8' 6"
Total	93.0 sq m	1001 sq ft
Balcony	6.2 sq m	66 sq ft

Unit 8.2

Living Space	6.07m x 4.06m	19' 10" x 13' 4"
Kitchen	2.55m x 3.91m	8' 4" x 12' 10"
Master Bedroom	5.92m x 2.70m	19' 5" x 8' 10"
Bedroom 2	4.72m x 2.60m	15' 5" x 8' 6"
Bedroom 3	3.92m x 2.60m	12' 10" x 8' 6"
Total	95.8 sq m	1031 sq ft
Balcony	3.1 sq m	33 sq ft

Unit 8.3

Living Space	4.15m x 4.06m	13' 8" x 13' 4"
Kitchen	2.51m x 4.06m	8' 2" x 13' 4"
Master Bedroom	3.22m x 3.30m	10' 7" x 10' 9"
Bedroom 2	4.33m x 2.60m	14' 2" x 8' 6"
Total	67.5 sq m	726 sq ft
Balcony	3.1 sq m	33 sq ft



Tasman Court apartment layouts provide approximate measurements only. Dimensions, which are taken from the indicated points of measurement are for guidance only and are not intended to be used for carpet sizes, appliance space or items of furniture. Total areas are provided as gross internal areas under the RICS measuring practice. All measurements and areas may vary within a tolerance of 5%. Kitchen layouts are indicative only and are subject to change. Views are indicative only.

* Windows are subject to planning.

Iconic apartments
captivating views



The ultimate in style



Kitchens

- Individually designed contemporary kitchen with high gloss cabinets
- Composite stone worktops and upstands
- Stainless steel single under-mounted sink with chrome mixer tap
- Bosch stainless steel fan assisted single electric oven
- Bosch frameless ceramic hob with slimline concealed extractor
- Fully integrated fridge/freezer or fridge with ice box where applicable
- Integrated slimline dishwasher
- Pop up power point to semi island unit where applicable
- Laminate oak effect timber flooring

Bathrooms

- White steel Kaldewei bath with wall mounted thermostatic mixer filler valve, overhead shower fitment on sliding rail and glass bath screen
- White square feature wall hung hand basin with square chrome monobloc mixer tap with open front storage unit below
- White dual flush floor mounted WC with concealed cistern
- Full height walnut effect storage unit, full height mirror, vanity shelf and bath panel
- Fully tiled large format contemporary ceramic wall tiling with mosaic feature wall and co-ordinating ceramic floor tiling

Shower Rooms

- Walk-in shower with frameless glass screen or shower enclosure with pivotal door as appropriate
- Square shower mixer and overhead shower fitment with chrome wall mounted thermostatic valve
- White square feature wall hung wash hand basin with square chrome monobloc mixer tap
- White dual flush floor mounted WC with concealed cistern
- Full height walnut effect storage unit, full height mirror and vanity shelf
- Fully tiled large format contemporary ceramic wall tiling with mosaic feature wall and co-ordinating ceramic floor tiling



Where contemporary style...



...blends with a superb specification



Interior Finishes

- Eucalyptus veneer front entrance door and internal doors
- Satin chrome finish lever door furniture throughout
- Skirting and architraves to be finished in white gloss
- Sliding patio doors or single/double casement doors where applicable
- Sealed double glazed windows
- Acoustic underlay to floors
- Laminate oak effect timber flooring to hall, kitchen and lounge with carpet to bedrooms
- Fitted wardrobe to master bedroom

Electrical Fittings / Plumbing

- A combination of low-voltage and low-energy downlighting throughout
- Task lighting beneath wall units in kitchen
- White light switches throughout
- White socket outlets at worktop height in kitchen
- White isolator switch-plate to kitchen
- White moulded isolator switches and sockets to all other locations
- Plumbing for washer/dryer in hall cupboard or bathroom cupboard
- Automatic lighting to storage cupboards
- Chrome shaver socket to bathrooms/shower rooms
- Master light switch to hallway

Heating

- Centrally provided heating and hot water. Generated by gas, individually metered to each apartment
- Underfloor with individual thermostatic temperature controls
- Chrome ladder-style heated towel rail with individual temperature control to bathrooms/shower rooms

Security and Peace of Mind

- Access to apartments via electronic audio door entry system and electronic access to internal communal areas
- All apartments pre-wired for alarm system (for future installation by purchaser if desired)
- Mains powered smoke detectors with battery back up
- Recorded CCTV coverage of site entrance and car park areas
- Concierge
- Multi point locking front entrance door
- 10 Year warranty cover

Telecommunication

- Wired for Sky Plus and Sky High Definition television with points to living room and all bedrooms (subject to future connection by purchaser)
- Broadband capability to all telephone points which are provided to living room and all bedrooms

External Finishes

- Where applicable balconies finished in glass and steel
- Paved terraces/Private Gardens to selected apartments

Common Areas

- Hallways and staircases to all floors carpeted throughout
- Lift access to all floors
- Refuse store provided

Car Parking

- Access to gated car park via electronic entry system
- Limited car parking spaces available by separate negotiation on selected plots
- Secure bicycle storage available for each unit

Tranquility on the water's edge...



...combined with shops, bars and restaurants



Caspian Wharf benefits from having the heart of London on your doorstep. From here you can really appreciate the expansive open parks and the calm and peaceful canals that wind through a fusion of cultures. This part of London has a vital role to play with the future of the London 2012 Olympic Games, making Caspian Wharf a vibrant location for you to enjoy the very best of London Living.

Tasman Court represents an exciting new phase of Caspian Wharf, a highly contemporary new development fronting the tranquil waters of the Limehouse Cut Canal.

Commercial space fronting Violet Road on the ground and first floors provides the perfect location for new restaurants, bars, cafés, shops, leisure clubs and office facilities.



CASPIAN WHARF LONDON



Getting to Caspian Wharf is easy, with excellent road and London Transport connections from Canary Wharf, Stratford and central London.

By DLR From Canary Wharf at Langdon Park station, turn right and continue along Violet Road, over a bridge across the Limehouse Cut. Cross the road to get to Yeo Street, on your left. If travelling from Stratford, cross the footbridge at Langdon Park station before continuing your journey.

By Road – From the A12, (travelling north) turn left onto Devas Street (B140) and pass Devons Road DLR, to turn left onto Violet Road. Yeo Street is on the first right.

From the A13, turn onto Crisp Street. Continue along Crisp Street until you reach Violet Road and continue over the bridge to turn left onto Yeo Street.

Call: +44 (0)844 800 1152

Visit the Caspian Wharf Sales and Marketing Suite at: 1 Yeo Street, Bow E3 3AE

www.berkeleyhomes.co.uk



THE QUEEN'S AWARDS
FOR ENTERPRISE:
SUSTAINABLE DEVELOPMENT
2008
The Berkeley Group Holdings plc

A development by
Berkeley Homes

At the forefront of
building homes for living.
In the places you want to live,
for the life you want to lead.

Berkeley
HOMES
A member of The Berkeley Group

The information in this document is indicative and is intended to act as a guide only as to the finished product. Accordingly, due to Berkeley Homes' policy of continuous improvement, the finished product may vary from the information provided. These particulars should not be relied upon as accurately describing any of the specific matters described by any order under the Property Misdescriptions Act 1991. This information does not constitute a contract, or warranty. Front cover: Computer generated image for illustrative purposes only.

The dimensions given on plans are subject to minor variations and are not intended to be used for carpet sizes, appliance sizes or items of furniture. Tasman Court and Caspian Wharf is a marketing name and will not necessarily form part of the approved postal address. Applicants are advised to contact the developer or the developer's agent to ascertain the availability of any particular property so as to avoid a fruitless journey. Correct at time of going to press. E717/08CA0710