



living



HISTORIC HEART - DYNAMIC FUTURE

Residents' Newsletter/www.royalarsenalriverside.co.uk

Berkeley (Urban Renaissance) Ltd

Grand launch of The Warehouse No.1 Street

The Warehouse

No.1 Street

The newest phase at Royal Arsenal Riverside, The Warehouse No.1 Street, is set to be launched on 25th and 26th June with the opening of the new Sales and Marketing Suite and unveiling of three new Show Apartments.

Over recent months you will have seen the building taking shape. Sitting on the cobbled pedestrianised route which runs from Young's flagship pub the Dial Arch, and down to the river, it features a red brick façade and is designed to complement the surrounding blend of contemporary and traditional architecture.

Combining a stylish warehouse feel with all of the convenience and comforts of a new build home, the Manhattan suites, one, two and three bedroom apartments and penthouses are situated in a loft-style building and boast exposed brick feature walls to the living rooms.

Each has its own private balcony or terrace, many with views of the river or the landscaped internal courtyard.

The show apartments have been carefully designed to combine chic contemporary interiors with a hint of vintage styling against the historic backdrop of Royal Arsenal Riverside's buildings. The styling includes iconic images of London and the local area, referencing the area's cultural history in acknowledgement of Greenwich's forthcoming Royal Borough status in 2012.

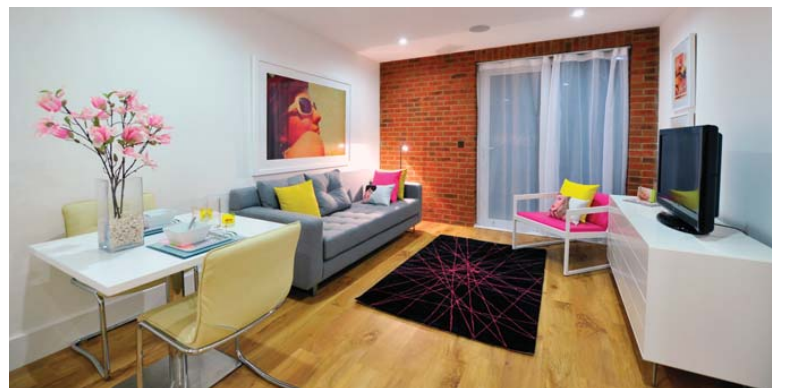
Paul Vallone, Managing Director of Berkeley Homes (Urban Renaissance), said: "Over

the coming weeks you'll see more and more of the building opening up as the scaffolds and hoarding come down. All our residents are more than welcome to come and visit the new show apartments to see inside for themselves."

You can get your first glimpse of the new apartments at the exclusive new phase launch on 25th and 26th June 2011.

For more information visit the Sales and Marketing Suite from June 25th onwards at its new location at Warehouse Court, No.1 Street. Open daily 10am - 6pm, with late night opening until 8pm on Thursdays.

www.royalarsenalriverside.co.uk



Computer generated image of The Warehouse No.1 Street



Get out and about this summer

Come rain or shine there's plenty to do at Royal Arsenal Riverside. Here's our top 10, including some events you may not have heard about nearby, as well as your local favourites.



1 Dial Arch
Relax at Young's flagship pub and dining on site, which features the brewer's award-winning cask ales, and serves quality food, with early opening for breakfast and coffee. You can also book the Wellington Room for get-togethers.
The Warren, Royal Arsenal Riverside
www.dialarch.com



2 Residents' Gym
Get fit for summer at the on-site residents only gym, which is moving to its new larger location in late June/early July. Accessible 24 hours a day.
New address will be: The North Range, Duke of Wellington Avenue, Royal Arsenal Riverside
www.royalarsenalriverside.co.uk



3 The Body Workshop
Book into this friendly and professional health and well-being clinic which offers a wide range of rejuvenating treatments. Moving to new premises along with the gym. The North Range, Duke of Wellington Avenue, Royal Arsenal Riverside
www.body-workshop.com



4 Firepower: The Royal Artillery Museum
A world class collection of artillery, associated weapons and artefacts bringing together 700 years of artillery history. Special events run throughout the summer.
No.1 Street, Royal Arsenal Riverside
www.firepower.org.uk



5 Greenwich Heritage Centre
Boasts a wealth of information and fascinating displays about the history of Greenwich. It also offers a range of activities, from talks and lectures to a Saturday club for children.
No. 1 Street, Royal Arsenal Riverside
www.greenwichheritage.org



6 Greenwich Fair
The Greenwich Fair is returning for the first time since 1857 for three days of outdoor performing arts as part of the Greenwich and Docklands Festival in June. Greenwich, Docklands and Royal Arsenal Riverside
www.festival.org



7 Greenwich Comedy Festival
The biggest festival of its kind in London with a host of top acts performing at the former Royal Naval College in the centre of Greenwich. September 5th to 11th. Old Royal Naval College, King William Walk, Greenwich
www.greenwichcomedyfestival.co.uk



8 Peter Harrison Planetarium
Treat yourself to various feature shows throughout the summer holidays. Impact: from Halley to Hayabusa explores our understanding of comets and asteroids.
Royal Observatory, Greenwich Park
www.nmm.ac.uk



9 Museum Café and Bistro
Relax with a cappuccino, or take part in the popular monthly quiz night. The café and bistro is fully licensed, serves great food and is open 7 days a week.
Firepower, The Royal Artillery Museum, Royal Arsenal Riverside
www.firepower.org.uk



10 Run to the Beat
Why not take part in this popular music half marathon, which starts and finishes at The O2 on September 25th? 17,000 people run the 13.1 mile route which passes right through Royal Arsenal Riverside.
The O2 Arena, Greenwich
www.runtothebeat.co.uk

A Baltic adventure fit for Russian Empress



A seafaring voyage carrying the first cargo of Russian Imperial Stout in over 100 years to the centre of St Petersburg, has had the historic occasion marked with a rousing send-off from Royal Arsenal Riverside.

The epic five week voyage, called The Great Baltic Adventure and sponsored by

Berkeley, set sail on May 16th carrying its precious cargo produced by 14 of Britain's most enterprising breweries.

The breweries have taken up the challenge to produce their own version of Russian Imperial Stout, a strong dark beer, which was popular in the 18th and 19th centuries and originally supplied to Russian Empress Catherine the Great and her Court by British breweries.

The voyage by the 17.8 metre long Thermopylae Clipper, will involve stopovers in major Baltic port cities each Saturday, coinciding with beer festivals in Copenhagen, Stockholm and Helsinki.

The arrival in St Petersburg is planned for June 15th, where the British brewers' efforts will be put before a judging panel at the city's Magerfest Beer Festival, which will select a winning stout fit for Catherine the Great.

Organiser and brewmaster Tim O'Rourke, from the Brilliant Beer Company, said: "It's an idea whose time has come round again. This has to be the most epic journey a drayman has made for 200 years."

www.thegreatbalticadventure.com

Tug boat kids beat commute



The Faraday School has entered into a unique partnership with Thames Clippers for a tug boat service to ferry pupils direct from Woolwich Pier at Royal Arsenal Riverside.

The journey to the low-fee independent school, which is located directly opposite the O2 Arena, takes just a few minutes from the pier saving children and staff around an hour a day in travelling time.

The boat, Predator II, has been specially adapted to make it safe for children and provides a convenient way to beat the rush hour traffic.



Since opening in September 2009, the Faraday School has already been rated as 'Outstanding' by Ofsted.

Headmaster Martin McElhone said: "Driving around London can be difficult, particularly in the morning, and the Clipper service is a wonderful way for children to get to school.

"We are having many more enquiries from south of the river, so I see the boats being used more and more in the future."

For more information on the Faraday School, please visit: www.newmodelschool.co.uk/faraday

Royal Arsenal receives top engineering honour



Left to right: Jim Gillman, Eileen Noon, John Anderson, John Wood and Sir Sidney Bacon

The Royal Arsenal's illustrious role in British engineering history has been honoured at a plaque unveiling ceremony on 2nd June.

The Royal Arsenal, the weapons factory that helped build the British Empire and win two world wars, joined the ranks of Britain's greatest engineering achievements after it received an Engineering Heritage Award from the Institution of Mechanical Engineers.

Founded in 1671, the Royal Arsenal designed and engineered the majority of the British Army's weapons and artillery for nearly 300 years. By the early 20th Century, at the height of the British Empire, it had become one of the largest weapons factories in the world, employing 80,000 people.

It was also one of the most advanced, and notable Royal Arsenal engineers such as Marc

Isambard Brunel, Samuel Bentham and Sir John Anderson (no relation to John Anderson at Berkeley!) put the Arsenal at the very forefront of weapons research and engineering.

John Wood, past President of the Institution of Mechanical Engineers, said: "The Royal Arsenal has made an unrivalled contribution to Britain's military history. The British Empire was forged in the furnaces of Woolwich, and we couldn't have won two world wars without the world-class engineering that took place here."

The plaque is located on No.1 Street, next to the front entrance of Firepower, The Royal Artillery Museum.



Courtesy of Greenwich Heritage Centre

Riverside finale for Greenwich Festival



A herd of life-sized giraffes is set to take centre stage at Royal Arsenal Riverside as part of the Greenwich and Docklands Festival.

Last seen at the Festival in 2003, Les Girafes is a spectacular show featuring a herd of life-sized crimson giraffes, an opera singer, a ring master and a succession of special effects.

The Festival, now in its 15th year, showcases a dazzling array of live and extravagant street theatre and dance, spread across nine days from June 24th in Greenwich, Woolwich and Docklands.

The free outdoors programme, which offers a range of entertainment for adults and children, culminates

on Saturday July 2nd in a spectacular climax featuring performance and pyrotechnics, including a finale by Les Girafes, to celebrate the completion of Woolwich town centre's new public squares.

The show will start at General Gordon Square at 9pm before proceeding via Beresford Square to Royal Arsenal Riverside, via the gates adjacent to the Royal Brass Foundry.

For the first time since 1857, the Greenwich Fair will also be making its comeback at the Festival with a huge programme of UK and international outdoor performing arts.

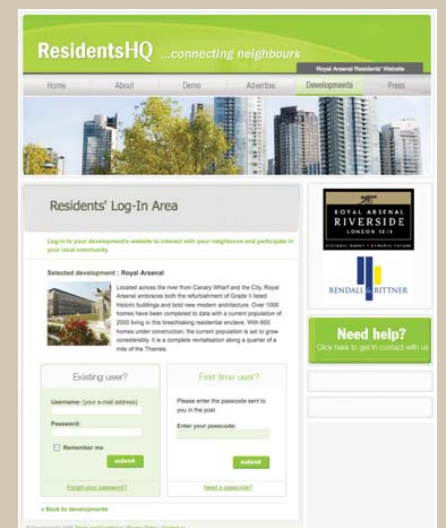
For the full list of events, please visit: www.festival.org

Friendly neighbours' network takes off

More than 650 residents have joined the official Royal Arsenal Riverside social networking website, which is designed to help neighbours form social clubs and even sell or buy goods.

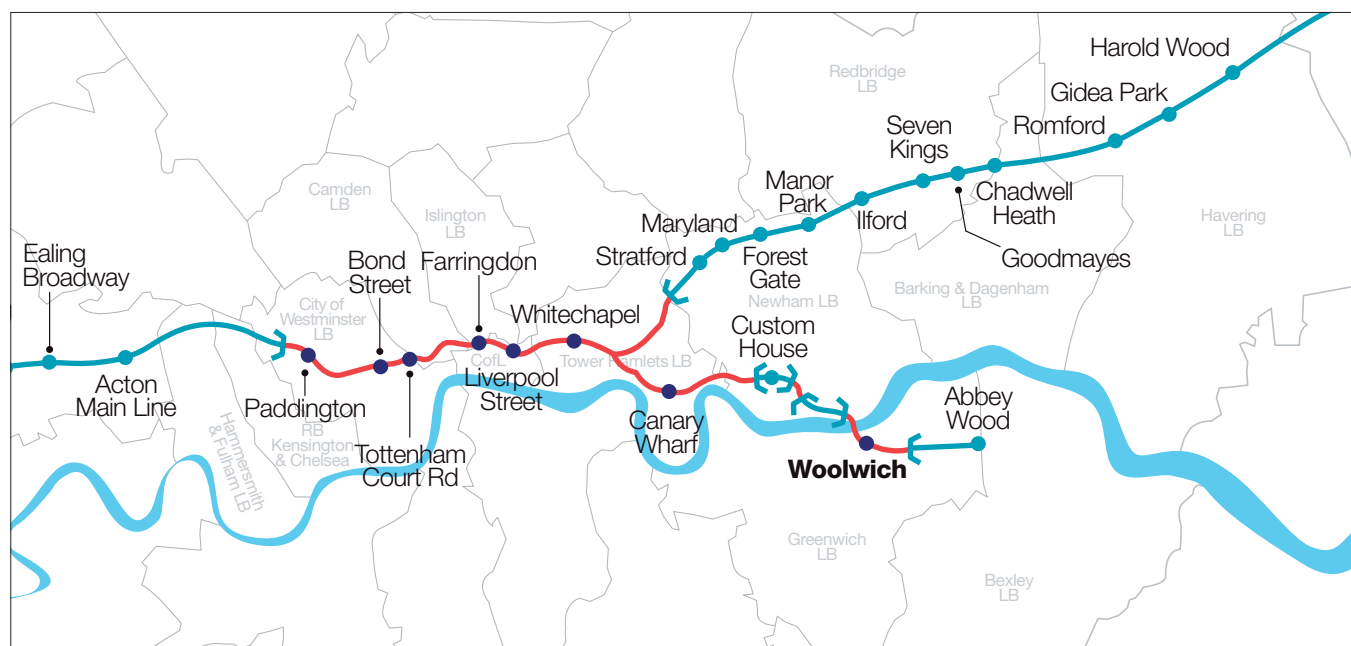
The website, which is privately run, is free to use for residents and also contains details on local news and events. To join contact the estate office on 020 8317 1854 who will post a password to your home.

www.ResidentsHQ.com/RoyalArsenal



Crossrail building begins with £100m station box underway at Woolwich

Berkeley is investing in building a new Crossrail station box at Royal Arsenal Riverside, as part of the regeneration of the area which is establishing itself as south London's best connected transport hub.



Over recent weeks you will have noticed, as part of the construction preparation, ground investigation works are taking place at various sites, and the demolition of business units on Gunnery Terrace has begun.

These works are the enabling works for the station box, and will involve the closure of the pay and display car park and top end of Arsenal Way, off Plumstead Road, from July onwards.

Berkeley Project Director, Mike Woolliscoft, said: "We appreciate the co-operation and support of our local residents, and apologise for any inconvenience caused. Crossrail will bring enormous benefits to the area and we have worked hard to minimise the impact of these important works."

Crossrail will run 118 km from Maidenhead and Heathrow in the west, to Shenfield and Abbey Wood in the east, when complete in 2017. Journey times to and from the proposed Woolwich Arsenal Station will be cut dramatically, with Tottenham Court Road reached in just 18 minutes, and Heathrow in 52 minutes.

Tesco Express work to begin

Work on fitting out a new Tesco Express located at the South Range, will begin shortly, providing residents and the local community with a convenient and quality supermarket on their doorstep.

It will be located in West Carriage House, off Royal Carriage Mews, behind the old Berkeley Sales and Marketing Suite which is moving to a new location in No.1 Street on June 25th. The site of the former sales and marketing suite will become the proposed entrance to the new Crossrail station.

The Concierge and residents' gym at Building 23 will also be moving to new premises located at The North Range, on Duke of Wellington Avenue, in late June/early July.



Indicative image only of forthcoming Tesco Express store

Locomotive's historic return



One of the original locomotives which operated at the Royal Arsenal at the height of its munitions manufacturing, made an historic return last month.

The steam powered engine was one of about 80 which transported workers and goods along 70 miles of narrow gauge track which served every building on site.

The first railways in the Royal Arsenal opened in 1820 and a mainline railway branch entered the site in 1849. In 1871, the Royal Arsenal received its own highly specialised railway running on rails only 18 inches apart.

The Crossness Engines' Trust is currently restoring the last two surviving engines. The Woolwich engine was originally built in 1916 and made a brief stopover at Royal Arsenal Riverside on May 18th.

There is a second chance to see this historic locomotive at an Open Day event at its new home on Sunday June 26th. Crossness Pumping Station, Belvedere Road, Abbey Wood, London SE2 9AQ.

www.crossness.org.uk