

Saggar House

THE
waterside
ROYAL WORCESTER



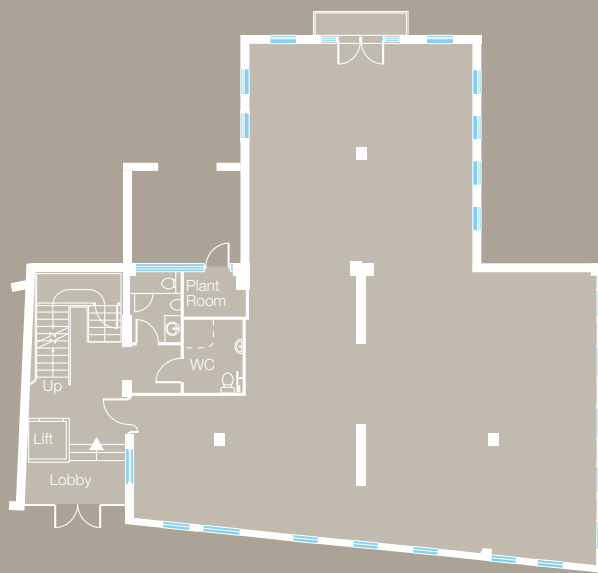
A charming old double-gabled two-storey brick building, Saggar House was among the first buildings to extend to the eastern side of the porcelain works. Today it offers a superb setting for a modern office environment with allocated parking.

Although the name refers to the clay box into which delicate ceramic objects are placed to protect them in the kiln during firing, Saggar House was built as a warehouse where finished ceramics were stored, around 1870.

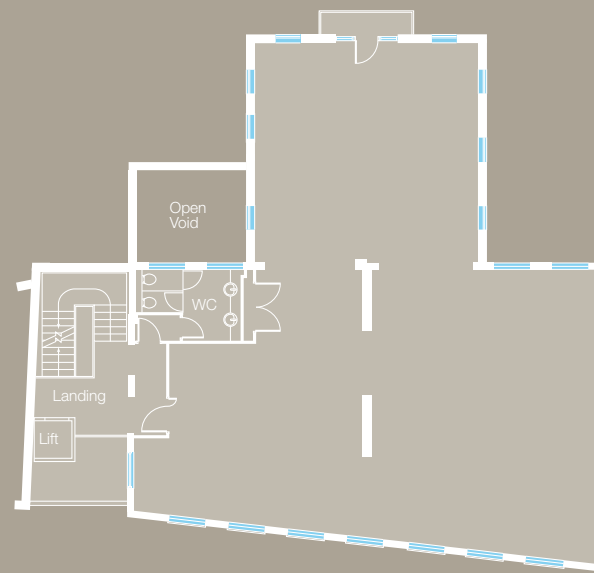
Significantly extended in the 20th century, the building will be sensitively refurbished and extended to provide 4,650 sq ft (432 sq m) of space with views over the canal. A stylish, contemporary glazed entrance feature reflects the modern, high specification within, while the building's floor layout allows ample flexibility.

a working heritage

Saggar House



Ground Floor



First Floor

Ground Floor Office Area
2,314 sq ft 215 sq m

First Floor Office
2,335 sq ft 217 sq m

Total Net Internal Area
4,650 sq ft 432 sq m

- Many existing and unusual period features retained
- High quality finishes throughout
- Comfort cooling
- Full access raised floor
- Intelligent lighting, designed to assist in achieving LG7 compliance
- Impressive entrance and reception
- Passenger lift
- WC and shower facilities
- Car parking



These particulars are not an offer or contract, nor part of one. You should not rely on statements by Knight Frank LLP nor Halls Commercial in the particulars or by word of mouth or in writing ("information") as being factually accurate about the property, its condition or its value. Neither Knight Frank LLP nor Halls Commercial have any authority to make any representations about the property, and accordingly any information given is entirely without responsibility on the part of the agents, seller(s) or lessor(s).

The photographs show only certain parts of the property as they appeared at the time they were taken. Areas, measurements and distances given are approximate only. Any reference to alterations to, or use of, any part of the property does not mean that any necessary planning, building regulations or other consent has been obtained. A buyer or lessee must find out by inspection or in other ways that these matters have been properly dealt with and that all information is correct.

The VAT position relating to the property may change without notice. July 2011.